

**Flood Control Project Maintenance
Levee Inspections**

Maintenance Issue Types Only, Levee Inspection Report By Mile - Fall 2019

Butte County Department of Public Works

Waterway	Bank	Unit Miles	Inspection Start/End	Inspector
Unit No. 01 Mud Creek	Right	6.80	10/22/2019 10/22/2019	Makar Sokol

LM Start		Rating **	A	Issue No.	6
LM End		Issue Type +	Ma	Location *	N/A
Category	Earthen Levee			GPS Latitude/Longitude	
				Start	End
Item	Emergency Supplies & Equipment			°	°
				°	°
DWR ID	DWR_NA0003_01_s_2013_6				
Comment Code					
Inspector Comment					
LMA has flood fight supplies & equipment.					

No Photos

LM Start		Rating **	A	Issue No.	10
LM End		Issue Type +	Ma	Location *	N/A
Category	Earthen Levee			GPS Latitude/Longitude	
				Start	End
Item	Flood Preparedness & Training			°	°
				°	°
DWR ID	DWR_NA0003_01_s_2013_10				
Comment Code					
Inspector Comment					
The LMA completed flood fight training in 2016.					

No Photos

LM Start		Rating **	A	Issue No.	58
LM End		Issue Type +	Ma	Location *	N/A
Category	Earthen Levee			GPS Latitude/Longitude	
				Start	End
Item	Operations & Maintenance Manuals			°	°
				°	°
DWR ID	DWR_NA0003_01_f_2017_58				
Comment Code					
Inspector Comment					
The LMA has O&M Manuals.					

No Photos

* Location LS : Land Side N/A : Not Applicable WS : Water Side CR : Crown	** Rating A : Acceptable M : Minimally Acceptable U : Unacceptable	N : Not Inspected/Rated C : Corrected A/W : Acceptable but Monitor & Maintain	+ Issue Type Ma : Maintenance Deficiency Ob : Design & System Obsolescence En : Enforcement
--	--	---	---

**Flood Control Project Maintenance
Levee Inspections**

Maintenance Issue Types Only, Levee Inspection Report By Mile - Fall 2019

Butte County Department of Public Works

Waterway	Bank	Unit Miles	Inspection Start/End	Inspector
Unit No. 01 Mud Creek	Right	6.80	10/22/2019 10/22/2019	Makar Sokol

LM Start	0.25	Rating **	A/W	Issue No.	64	
LM End	0.25	Issue Type +	Ma	Location *		
Category	Supplemental			GPS Latitude/Longitude		
				Start		End
Item	DRAFT DWR UCIP LMA Responsibility			39.729219 °		39.729219 °
				-121.933437 °		-121.933437 °
DWR ID	19209					
Comment Code						
Inspector Comment						
DS_ID:19209						
FS_ID:29705						
EP_NO: N/A						
Repair Type: No Action Needed						
Crossing Status: Found						
UCIP Comments: Looks cleaned recently.						
FIELD_STRUCT_DESC: 24-inch corrugated metal gravity drainage pipe through the levee, 12.5 feet below the crown. Flap gate on the waterside (WS) end. Concrete U-shaped headwall on each end. Grouted riprap apron on the landside (LS) end. Grouted riprap spillway on the WS end. [Additional Reference(s): DWR Levee Log, 1992. USACE Sacramento O&M Manual 504, May 1965, (HLM 0.26)].						
FS Date: 2/20/2014						

LM Start	0.25	Rating **	A/W	Issue No.	64 (cont)
LM End	0.25	Issue Type +	Ma	Location *	

Photo 1 of 3 : UCIP_FA_2019_29705_54924.jpg



WS view: U typed concrete headwall, flapgate on levee slope.

Photo 2 of 3 : UCIP_FA_2019_29705_54923.jpg



LS view: U typed concrete headwall, CMP on levee slope.

* Location LS : Land Side N/A : Not Applicable WS : Water Side CR : Crown	** Rating A : Acceptable M : Minimally Acceptable U : Unacceptable	N : Not Inspected/Rated C : Corrected A/W : Acceptable but Monitor & Maintain	+ Issue Type Ma : Maintenance Deficiency Ob : Design & System Obsolescence En : Enforcement
--	--	---	---

**Flood Control Project Maintenance
Levee Inspections**

Maintenance Issue Types Only, Levee Inspection Report By Mile - Fall 2019

Butte County Department of Public Works

Waterway	Bank	Unit Miles	Inspection Start/End	Inspector
Unit No. 01 Mud Creek	Right	6.80	10/22/2019 10/22/2019	Makar Sokol

LM Start	0.25	Rating **	A/W	Issue No.	64 (cont)	
LM End	0.25	Issue Type +	Ma	Location *		
Category	Supplemental			GPS Latitude/Longitude		
				Start		End
Item	DRAFT DWR UCIP LMA Responsibility			39.729219 °		39.729219 °
				-121.933437 °		-121.933437 °
DWR ID	19209					
Comment Code						
Inspector Comment						
DS_ID:19209 FS_ID:29705 EP_NO: N/A Repair Type: No Action Needed Crossing Status: Found UCIP Comments: Looks cleaned recently. FIELD_STRUCT_DESC: 24-inch corrugated metal gravity drainage pipe through the levee, 12.5 feet below the crown. Flap gate on the waterside (WS) end. Concrete U-shaped headwall on each end. Grouted riprap apron on the landside (LS) end. Grouted riprap spillway on the WS end. [Additional Reference(s): DWR Levee Log, 1992. USACE Sacramento O&M Manual 504, May 1965, (HLM 0.26)]. FS Date: 2/20/2014						

Photo 3 of 3 : UCIP_FA_2019_29705_54922.jpg



LS view: inside view of CMP on levee slope. Looks clean and clear.

LM Start	1.00	Rating **	M	Issue No.	65	
LM End	1.00	Issue Type +	Ma	Location *		
Category	Supplemental			GPS Latitude/Longitude		
				Start		End
Item	DRAFT DWR UCIP LMA Responsibility			39.739268 °		39.739268 °
				-121.931891 °		-121.931891 °
DWR ID	19211					
Comment Code						
Inspector Comment						
DS_ID:19211 FS_ID:32044 EP_NO: N/A Repair Type: Non-Urgent Crossing Status: Found UCIP Comments: Vegetation debris on waterside. Needs clearing and cleaning. FIELD_STRUCT_DESC: 24-inch corrugated metal gravity drainage pipe through the levee, 12 feet below the crown. Flap gate on the waterside (WS) end. Concrete U-shaped headwall on each end. Grouted riprap apron on the landside (LS) end. Grouted riprap spillway on the WS end. [Additional Reference(s): DWR Levee Log, 1992. USACE Sacramento O&M Manual 504, May 1965, (HLM 1.03)]. FS Date: 2/20/2014						

Photo 1 of 3 : UCIP_FA_2019_32044_58543.jpg



WS view: U typed concrete headwall, pipe, and flapgate on levee slope.

* Location LS : Land Side N/A : Not Applicable WS : Water Side CR : Crown	** Rating A : Acceptable M : Minimally Acceptable U : Unacceptable	N : Not Inspected/Rated C : Corrected A/W : Acceptable but Monitor & Maintain	+ Issue Type Ma : Maintenance Deficiency Ob : Design & System Obsolescence En : Enforcement
--	--	---	---

**Flood Control Project Maintenance
Levee Inspections**

Maintenance Issue Types Only, Levee Inspection Report By Mile - Fall 2019

Butte County Department of Public Works

Waterway	Bank	Unit Miles	Inspection Start/End	Inspector
Unit No. 01 Mud Creek	Right	6.80	10/22/2019 10/22/2019	Makar Sokol

LM Start	1.00	Rating **	M	Issue No.	65 (cont)	
LM End	1.00	Issue Type +	Ma	Location *		
Category	Supplemental			GPS Latitude/Longitude		
				Start		End
Item	DRAFT DWR UCIP LMA Responsibility			39.739268 °		39.739268 °
				-121.931891 °		-121.931891 °
DWR ID	19211					
Comment Code						
Inspector Comment						
DS_ID:19211 FS_ID:32044 EP_NO: N/A Repair Type: Non-Urgent Crossing Status: Found UCIP Comments: Vegetation debris on waterside. Needs clearing and cleaning. FIELD_STRUCT_DESC: 24-inch corrugated metal gravity drainage pipe through the levee, 12 feet below the crown. Flap gate on the waterside (WS) end. Concrete U-shaped headwall on each end. Grouted riprap apron on the landside (LS) end. Grouted riprap spillway on the WS end. [Additional Reference(s): DWR Levee Log, 1992. USACE Sacramento O&M Manual 504, May 1965, (HLM 1.03)]. FS Date: 2/20/2014						

Photo 2 of 3 : UCIP_FA_2019_32044_58542.jpg



WS view: vegetation debris blocking outlet.

LM Start	1.00	Rating **	M	Issue No.	65 (cont)
LM End	1.00	Issue Type +	Ma	Location *	

Photo 3 of 3 : UCIP_FA_2019_32044_58541.jpg



LS view: U typed concrete headwall and CMP on levee slope.

* Location LS : Land Side N/A : Not Applicable WS : Water Side CR : Crown	** Rating A : Acceptable M : Minimally Acceptable U : Unacceptable	N : Not Inspected/Rated C : Corrected A/W : Acceptable but Monitor & Maintain	+ Issue Type Ma : Maintenance Deficiency Ob : Design & System Obsolescence En : Enforcement
--	--	---	---

**Flood Control Project Maintenance
Levee Inspections**

Maintenance Issue Types Only, Levee Inspection Report By Mile - Fall 2019

Butte County Department of Public Works

Waterway	Bank	Unit Miles	Inspection Start/End	Inspector
Unit No. 01 Mud Creek	Right	6.80	10/22/2019 10/22/2019	Makar Sokol

LM Start	1.90	Rating **	A/W	Issue No.	66	
LM End	1.90	Issue Type +	Ma	Location *		
Category	Supplemental			GPS Latitude/Longitude		
				Start	End	
Item	DRAFT DWR UCIP LMA Responsibility			39.747563 °	39.747563 °	
				-121.920170 °	-121.920170 °	
DWR ID	19212					
Comment Code						
Inspector Comment						
DS_ID:19212 FS_ID:50142 EP_NO: N/A Repair Type: No Action Needed Crossing Status: Found UCIP Comments: 08/29/2016: Shawn Bates of NA0003 has cleared the LS and WS of debris and blockage; WS gate functions properly now. Crossing has been downgraded from Urgent to No Action Needed. (K. Fazel - UCIP)08/11/2016: Same as last inspection. (K. Fazel - UCIP)02/20/2014:No riprap spillway on waterside. Needs cleaning and clearing of debris. Flap gate was not fully closed. (P. Amatya - UCIP) FIELD_STRUCT_DESC: 24-inch corrugated metal gravity drainage pipe through the levee, 13 feet below the crown. Flap gate on the waterside (WS) end. Concrete U-shaped headwall on each end. Grouted riprap apron on the landside (LS) end. Grouted riprap spillway on the WS end. [Additional Reference(s): DWR Levee Log, 2005. USACE Sacramento O&M Manual 504, May 1965, (HLM 1.95)]. FS Date: 8/11/2016						

LM Start	1.90	Rating **	A/W	Issue No.	66 (cont)
LM End	1.90	Issue Type +	Ma	Location *	

Photo 1 of 3 : UCIP_FA_2019_50142_55886.jpg



WS view: U type concrete headwall, flapgate on levee slope. Gate was not fully closed.

Photo 2 of 3 : UCIP_FA_2019_50142_55885.jpg



LS view: U type concrete headwall and CMP on levee slope. Vegetation debris blocking inlet.

* Location LS : Land Side N/A : Not Applicable WS : Water Side CR : Crown	** Rating A : Acceptable M : Minimally Acceptable U : Unacceptable	N : Not Inspected/Rated C : Corrected A/W : Acceptable but Monitor & Maintain	+ Issue Type Ma : Maintenance Deficiency Ob : Design & System Obsolescence En : Enforcement
--	--	---	---

**Flood Control Project Maintenance
Levee Inspections**

Maintenance Issue Types Only, Levee Inspection Report By Mile - Fall 2019

Butte County Department of Public Works

Waterway	Bank	Unit Miles	Inspection Start/End	Inspector
Unit No. 01 Mud Creek	Right	6.80	10/22/2019 10/22/2019	Makar Sokol

LM Start	1.90	Rating **	A/W	Issue No.	66 (cont)	
LM End	1.90	Issue Type +	Ma	Location *		
Category	Supplemental			GPS Latitude/Longitude		
				Start	End	
Item	DRAFT DWR UCIP LMA Responsibility			39.747563 °	39.747563 °	
				-121.920170 °	-121.920170 °	
DWR ID	19212					
Comment Code						
Inspector Comment						
DS_ID:19212 FS_ID:50142 EP_NO: N/A Repair Type: No Action Needed Crossing Status: Found UCIP Comments: 08/29/2016: Shawn Bates of NA0003 has cleared the LS and WS of debris and blockage; WS gate functions properly now. Crossing has been downgraded from Urgent to No Action Needed. (K. Fazel - UCIP)08/11/2016: Same as last inspection. (K. Fazel - UCIP)02/20/2014:No riprap spillway on waterside. Needs cleaning and clearing of debris. Flap gate was not fully closed. (P. Amatya - UCIP) FIELD_STRUCT_DESC: 24-inch corrugated metal gravity drainage pipe through the levee, 13 feet below the crown. Flap gate on the waterside (WS) end. Concrete U-shaped headwall on each end. Grouted riprap apron on the landside (LS) end. Grouted riprap spillway on the WS end. [Additional Reference(s): DWR Levee Log, 2005. USACE Sacramento O&M Manual 504, May 1965, (HLM 1.95)]. FS Date: 8/11/2016						

Photo 3 of 3 : UCIP_FA_2019_50142_55884.jpg



LS view: inside view of CMP on levee slope. Needs cleaning and clearing.

LM Start	2.38	Rating **	M	Issue No.	19
LM End	2.38	Issue Type +	Ma	Location *	LS
Category	Earthen Levee			GPS Latitude/Longitude	
				Start	End
Item	Animal Control			39.753041 °	39.753041 °
				-121.915566 °	-121.915566 °
DWR ID	DWR_NA0003_01_f_2019_19				
Comment Code					
A3 : No rodents visible, but rodent burrows visible; need to backfill and compact or grout burrows.					
Inspector Comment					

No Photos

* Location LS : Land Side N/A : Not Applicable WS : Water Side CR : Crown	** Rating A : Acceptable M : Minimally Acceptable U : Unacceptable	N : Not Inspected/Rated C : Corrected A/W : Acceptable but Monitor & Maintain	+ Issue Type Ma : Maintenance Deficiency Ob : Design & System Obsolescence En : Enforcement
--	--	---	---

**Flood Control Project Maintenance
Levee Inspections**

Maintenance Issue Types Only, Levee Inspection Report By Mile - Fall 2019

Butte County Department of Public Works

Waterway	Bank	Unit Miles	Inspection Start/End	Inspector
Unit No. 01 Mud Creek	Right	6.80	10/22/2019 10/22/2019	Makar Sokol

LM Start	2.49	Rating **	M	Issue No.	20
LM End	2.49	Issue Type +	Ma	Location *	LS
Category	Earthen Levee		GPS Latitude/Longitude		
			Start	End	
Item	Animal Control		39.754431°	39.754431°	
			-121.914770°	-121.914770°	
DWR ID	DWR_NA0003_01_f_2019_20				
Comment Code					
A3 : No rodents visible, but rodent burrows visible; need to backfill and compact or grout burrows.					
Inspector Comment					

No Photos

LM Start	2.57	Rating **	M	Issue No.	21
LM End	2.57	Issue Type +	Ma	Location *	LS
Category	Earthen Levee		GPS Latitude/Longitude		
			Start	End	
Item	Animal Control		39.755692°	39.755692°	
			-121.914873°	-121.914873°	
DWR ID	DWR_NA0003_01_f_2019_21				
Comment Code					
A3 : No rodents visible, but rodent burrows visible; need to backfill and compact or grout burrows.					
Inspector Comment					

No Photos

LM Start	3.01	Rating **	M	Issue No.	52
LM End	3.01	Issue Type +	Ma	Location *	LS
Category	Earthen Levee		GPS Latitude/Longitude		
			Start	End	
Item	Trim / Thin Trees		39.760888°	39.760888°	
			-121.911309°	-121.911309°	
DWR ID	DWR_NA0003_01_s_2019_52				
Comment Code					
T2 : Thin trees to allow visibility of the ground and room to flood fight.					
Inspector Comment					
The almond tree should be removed from the landside shoulder.					

No Photos

* Location LS : Land Side N/A : Not Applicable WS : Water Side CR : Crown	** Rating A : Acceptable M : Minimally Acceptable U : Unacceptable	N : Not Inspected/Rated C : Corrected A/W : Acceptable but Monitor & Maintain	+ Issue Type Ma : Maintenance Deficiency Ob : Design & System Obsolescence En : Enforcement
--	--	---	---

**Flood Control Project Maintenance
Levee Inspections**

Maintenance Issue Types Only, Levee Inspection Report By Mile - Fall 2019

Butte County Department of Public Works

Waterway	Bank	Unit Miles	Inspection Start/End	Inspector
Unit No. 01 Mud Creek	Right	6.80	10/22/2019 10/22/2019	Makar Sokol

LM Start	3.03	Rating **	M	Issue No.	68	
LM End	3.03	Issue Type +	Ma	Location *		
Category	Supplemental			GPS Latitude/Longitude		
				Start	End	
Item	DRAFT DWR UCIP LMA Responsibility			39.761224°	39.761224°	
				-121.911108°	-121.911108°	
DWR ID	19216					
Comment Code						
Inspector Comment						
DS_ID:19216 FS_ID:30294 EP_NO: N/A Repair Type: Non-Urgent Crossing Status: Found UCIP Comments: Inlet and outlet needs cleaning and clearing of debris. FIELD_STRUCT_DESC: 24-inch corrugated metal gravity drainage pipe through the levee, 8.5 feet below the crown. Flap gate on the waterside (WS) end. Concrete U-shaped headwall on each end. Grouted riprap apron on the landside (LS) end. Grouted riprap spillway on the WS end. [Additional Reference(s): DWR Levee Log, 1992. USACE Sacramento O&M Manual 504, May 1965, (HLM 3.11)]. FS Date: 2/20/2014						

LM Start	3.03	Rating **	M	Issue No.	68 (cont)
LM End	3.03	Issue Type +	Ma	Location *	

Photo 1 of 2 : UCIP_FA_2019_30294_55704.jpg



WS view: U type concrete headwall, flapgate on levee slope.

Photo 2 of 2 : UCIP_FA_2019_30294_55703.jpg



LS view: U type concrete headwall and CMP on levee slope. Debris blocking the inlet pipe.

* Location LS : Land Side N/A : Not Applicable WS : Water Side CR : Crown	** Rating A : Acceptable M : Minimally Acceptable U : Unacceptable	N : Not Inspected/Rated C : Corrected A/W : Acceptable but Monitor & Maintain	+ Issue Type Ma : Maintenance Deficiency Ob : Design & System Obsolescence En : Enforcement
--	--	---	---

**Flood Control Project Maintenance
Levee Inspections**

Maintenance Issue Types Only, Levee Inspection Report By Mile - Fall 2019

Butte County Department of Public Works

Waterway	Bank	Unit Miles	Inspection Start/End	Inspector
Unit No. 01 Mud Creek	Right	6.80	10/22/2019 10/22/2019	Makar Sokol

LM Start	3.18	Rating **	M	Issue No.	69
LM End	3.18	Issue Type +	Ma	Location *	
Category	Supplemental			GPS Latitude/Longitude	
				Start	End
Item	DRAFT DWR UCIP LMA Responsibility			39.763067 °	39.763067 °
				-121.909608 °	-121.909608 °
DWR ID	19217				
Comment Code					
Inspector Comment					
DS_ID:19217 FS_ID:30295 EP_NO: N/A Repair Type: Non-Urgent Crossing Status: Found UCIP Comments: It needs cleaning and clearing in inlet and outlet ends. FIELD_STRUCT_DESC: 24-inch corrugated metal gravity drainage pipe through the levee, 9 feet below the crown. Flap gate on the waterside (WS) end. Concrete U-shaped headwall on each end. Grouted riprap apron on the landside (LS) end. Grouted riprap spillway on the WS end. [Additional Reference(s): DWR Levee Log, 1992. USACE Sacramento O&M Manual 504, May 1965, (HLM 3.27)]. FS Date: 2/20/2014					

LM Start	3.18	Rating **	M	Issue No.	69 (cont)
LM End	3.18	Issue Type +	Ma	Location *	

Photo 1 of 2 : UCIP_FA_2019_30295_55706.jpg



WS view: U type concrete headwall, flapgate on levee slope. Vegetation debris blocking the outlet.

Photo 2 of 2 : UCIP_FA_2019_30295_55705.jpg



LS view: U type concrete headwall and CMP on levee slope. Vegetation debris blocking the inlet.

* Location LS : Land Side N/A : Not Applicable WS : Water Side CR : Crown	** Rating A : Acceptable M : Minimally Acceptable U : Unacceptable	N : Not Inspected/Rated C : Corrected A/W : Acceptable but Monitor & Maintain	+ Issue Type Ma : Maintenance Deficiency Ob : Design & System Obsolescence En : Enforcement
--	--	---	---

**Flood Control Project Maintenance
Levee Inspections**

Maintenance Issue Types Only, Levee Inspection Report By Mile - Fall 2019

Butte County Department of Public Works

Waterway	Bank	Unit Miles	Inspection Start/End	Inspector
Unit No. 01 Mud Creek	Right	6.80	10/22/2019 10/22/2019	Makar Sokol

LM Start	3.39	Rating **	M	Issue No.	70
LM End	3.39	Issue Type +	Ma	Location *	
Category	Supplemental			GPS Latitude/Longitude	
				Start	End
Item	DRAFT DWR UCIP LMA Responsibility			39.765440 °	39.765440 °
				-121.907261 °	-121.907261 °
DWR ID	19218				
Comment Code					
Inspector Comment					
DS_ID:19218 FS_ID:30310 EP_NO: N/A Repair Type: Non-Urgent Crossing Status: Found UCIP Comments: Needs cleaning and clearing of debris. FIELD_STRUCT_DESC: 24-inch corrugated metal gravity drainage pipe through the levee, 10 feet below the crown. Flap gate on the waterside (WS) end. Concrete U-shaped headwall on each end. Grouted riprap apron on the landside (LS) end. Grouted riprap spillway on the WS end. [Additional Reference(s): DWR Levee Log, 1992. USACE Sacramento O&M Manual 504, May 1965, (HLM 3.48)]. FS Date: 2/20/2014					

LM Start	3.39	Rating **	M	Issue No.	70 (cont)
LM End	3.39	Issue Type +	Ma	Location *	

Photo 1 of 3 : UCIP_FA_2019_30310_55741.jpg



WS view: U type concrete headwall, pipe, and flapgate on levee slope. Vegetation debris blocking outlet.

Photo 2 of 3 : UCIP_FA_2019_30310_55740.jpg



LS view: U type concrete headwall and CMP on levee slope.

* Location LS : Land Side N/A : Not Applicable WS : Water Side CR : Crown	** Rating A : Acceptable M : Minimally Acceptable U : Unacceptable	N : Not Inspected/Rated C : Corrected A/W : Acceptable but Monitor & Maintain	+ Issue Type Ma : Maintenance Deficiency Ob : Design & System Obsolescence En : Enforcement
--	--	---	---

**Flood Control Project Maintenance
Levee Inspections**

Maintenance Issue Types Only, Levee Inspection Report By Mile - Fall 2019

Butte County Department of Public Works

Waterway	Bank	Unit Miles	Inspection Start/End	Inspector
Unit No. 01 Mud Creek	Right	6.80	10/22/2019 10/22/2019	Makar Sokol

LM Start	3.39	Rating **	M	Issue No.	70 (cont)	
LM End	3.39	Issue Type +	Ma	Location *		
Category	Supplemental			GPS Latitude/Longitude		
				Start	End	
Item	DRAFT DWR UCIP LMA Responsibility			39.765440 °	39.765440 °	
				-121.907261 °	-121.907261 °	
DWR ID	19218					
Comment Code						
Inspector Comment						
DS_ID:19218 FS_ID:30310 EP_NO: N/A Repair Type: Non-Urgent Crossing Status: Found UCIP Comments: Needs cleaning and clearing of debris. FIELD_STRUCT_DESC: 24-inch corrugated metal gravity drainage pipe through the levee, 10 feet below the crown. Flap gate on the waterside (WS) end. Concrete U-shaped headwall on each end. Grouted riprap apron on the landside (LS) end. Grouted riprap spillway on the WS end. [Additional Reference(s): DWR Levee Log, 1992. USACE Sacramento O&M Manual 504, May 1965, (HLM 3.48)]. FS Date: 2/20/2014						

Photo 3 of 3 : UCIP_FA_2019_30310_55739.jpg



LS view: inside view of CMP on levee slope. Needs cleaning and clearing.

LM Start	3.89	Rating **	C	Issue No.	32
LM End	3.89	Issue Type +	Ma	Location *	LS
Category	Earthen Levee			GPS Latitude/Longitude	
				Start	End
Item	Encroachments			39.770395 °	39.770395 °
				-121.901305 °	-121.901305 °
DWR ID	DWR_NA0003_01_s_2018_32				
Comment Code					
PR : Prunings					
Inspector Comment					
The prunings should be removed from the landside toe.					

No Photos

* Location LS : Land Side N/A : Not Applicable WS : Water Side CR : Crown	** Rating A : Acceptable M : Minimally Acceptable U : Unacceptable	N : Not Inspected/Rated C : Corrected A/W : Acceptable but Monitor & Maintain	+ Issue Type Ma : Maintenance Deficiency Ob : Design & System Obsolescence En : Enforcement
--	--	---	---

**Flood Control Project Maintenance
Levee Inspections**

Maintenance Issue Types Only, Levee Inspection Report By Mile - Fall 2019

Butte County Department of Public Works

Waterway	Bank	Unit Miles	Inspection Start/End	Inspector
Unit No. 01 Mud Creek	Right	6.80	10/22/2019 10/22/2019	Makar Sokol

LM Start	3.97	Rating **	M	Issue No.	71	
LM End	3.97	Issue Type +	Ma	Location *		
Category	Supplemental			GPS Latitude/Longitude		
				Start		End
Item	DRAFT DWR UCIP LMA Responsibility			39.771293 °		39.771293 °
				-121.900247 °		-121.900247 °
DWR ID	19219					
Comment Code						
Inspector Comment						
DS_ID:19219						
FS_ID:30311						
EP_NO: N/A						
Repair Type: Non-Urgent						
Crossing Status: Found						
UCIP Comments: Needs cleaning and clearing of debris in both ends of the pipe.						
FIELD_STRUCT_DESC: 24-inch corrugated metal gravity drainage pipe through the levee, 9 feet below the crown. Flap gate on the waterside (WS) end. Concrete U-shaped headwall on each end. Grouted riprap apron on the landside (LS) end. Grouted riprap spillway on the WS end. [Additional Reference(s): DWR Levee Log, 1992. USACE Sacramento O&M Manual 504, May 1965, (HLM 4.08)].						
FS Date: 2/20/2014						

LM Start	3.97	Rating **	M	Issue No.	71 (cont)
LM End	3.97	Issue Type +	Ma	Location *	

Photo 1 of 2 : UCIP_FA_2019_30311_55743.jpg



WS view: U type concrete headwall, pipe, and flapgate on levee slope.
Vegetation debris blocking outlet.

Photo 2 of 2 : UCIP_FA_2019_30311_55742.jpg



LS view: U type concrete headwall and CMP on levee slope.

* Location	** Rating	+ Issue Type
LS : Land Side WS : Water Side CR : Crown	A : Acceptable M : Minimally Acceptable U : Unacceptable	Ma : Maintenance Deficiency Ob : Design & System Obsolescence En : Enforcement
N/A : Not Applicable	N : Not Inspected/Rated C : Corrected A/W : Acceptable but Monitor & Maintain	

**Flood Control Project Maintenance
Levee Inspections**

Maintenance Issue Types Only, Levee Inspection Report By Mile - Fall 2019

Butte County Department of Public Works

Waterway	Bank	Unit Miles	Inspection Start/End	Inspector
Unit No. 01 Mud Creek	Right	6.80	10/22/2019 10/22/2019	Makar Sokol

LM Start	4.26	Rating **	A/W	Issue No.	5
LM End	4.32	Issue Type +	Ma	Location *	WS
Category	Supplemental			GPS Latitude/Longitude	
				Start	End
Item	2017 USACE Erosion Survey			39.773257 °	39.773969 °
				-121.895618 °	-121.895078 °
DWR ID	DWR_ST0010_02_f_2022_9				
Comment Code					
Inspector Comment					
2017 Site ID: MUD 4.4 R					
Status: Eroding					
2017 Field Notes: Erosion scarps have increased since last inspection in 2011.					
Site History: 2011 - Two large erosion scallops at the toe from a rotational failure. Deep cracks along the slope indicate the potential for further failures.					

No Photos

LM Start	4.27	Rating **	M	Issue No.	50
LM End	4.27	Issue Type +	Ma	Location *	LS
Category	Earthen Levee			GPS Latitude/Longitude	
				Start	End
Item	Vegetation			39.773487 °	39.773487 °
				-121.895716 °	-121.895716 °
DWR ID	DWR_NA0003_01_s_2019_50				
Comment Code					
V2 : Remove the wild growth other than native grasses from the levee slopes.					
Inspector Comment					
The blackberry bushes should be removed from the landside toe.					

No Photos

* Location LS : Land Side N/A : Not Applicable WS : Water Side CR : Crown	** Rating A : Acceptable M : Minimally Acceptable U : Unacceptable	N : Not Inspected/Rated C : Corrected A/W : Acceptable but Monitor & Maintain	+ Issue Type Ma : Maintenance Deficiency Ob : Design & System Obsolescence En : Enforcement
--	--	---	---

**Flood Control Project Maintenance
Levee Inspections**

Maintenance Issue Types Only, Levee Inspection Report By Mile - Fall 2019

Butte County Department of Public Works

Waterway	Bank	Unit Miles	Inspection Start/End	Inspector
Unit No. 01 Mud Creek	Right	6.80	10/22/2019 10/22/2019	Makar Sokol

LM Start	4.40	Rating **	C	Issue No.	59
LM End	4.40	Issue Type +	Ma	Location *	LS
Category	Earthen Levee			GPS Latitude/Longitude	
				Start	End
Item	Trim / Thin Trees			39.775097°	39.775097°
				-121.894447°	-121.894447°
DWR ID	DWR_NA0003_01_s_2019_59				
Comment Code					
T2 : Thin trees to allow visibility of the ground and room to flood fight.					
Inspector Comment					

No Photos

LM Start	4.41	Rating **	M	Issue No.	60
LM End	4.41	Issue Type +	Ma	Location *	LS
Category	Earthen Levee			GPS Latitude/Longitude	
				Start	End
Item	Slope Stability			39.775201 °	39.775201 °
				-121.894357 °	-121.894357 °
DWR ID	DWR_NA0003_01_s_2019_60				
Comment Code					
S3 : Repair the levee slope damaged by vehicle traffic and prevent access where possible.					
Inspector Comment					

No Photos

LM Start	4.45	Rating **	M	Issue No.	61
LM End	4.45	Issue Type +	Ma	Location *	LS
Category	Earthen Levee			GPS Latitude/Longitude	
				Start	End
Item	Trim / Thin Trees			39.775710 °	39.775710 °
				-121.894060 °	-121.894060 °
DWR ID	DWR_NA0003_01_s_2019_61				
Comment Code					
T1 : Trim trees to at least five feet above ground level.					
Inspector Comment					

No Photos

* Location LS : Land Side N/A : Not Applicable WS : Water Side CR : Crown	** Rating A : Acceptable M : Minimally Acceptable U : Unacceptable	N : Not Inspected/Rated C : Corrected A/W : Acceptable but Monitor & Maintain	+ Issue Type Ma : Maintenance Deficiency Ob : Design & System Obsolescence En : Enforcement
--	--	---	---

**Flood Control Project Maintenance
Levee Inspections**

Maintenance Issue Types Only, Levee Inspection Report By Mile - Fall 2019

Butte County Department of Public Works

Waterway	Bank	Unit Miles	Inspection Start/End	Inspector
Unit No. 01 Mud Creek	Right	6.80	10/22/2019 10/22/2019	Makar Sokol

LM Start	4.46	Rating **	M	Issue No.	72
LM End	4.46	Issue Type +	Ma	Location *	
Category	Supplemental			GPS Latitude/Longitude	
				Start	End
Item	DRAFT DWR UCIP LMA Responsibility			39.775905 °	39.775905 °
				-121.893980 °	-121.893980 °
DWR ID	19220				
Comment Code					
Inspector Comment					
DS_ID:19220 FS_ID:30312 EP_NO: N/A Repair Type: Non-Urgent Crossing Status: Found UCIP Comments: Needs cleaning and clearing of debris. FIELD_STRUCT_DESC: 24-inch corrugated metal gravity drainage pipe through the levee, 13 feet below the crown. Flap gate on the waterside (WS) end. Concrete U-shaped headwall on each end. Grouted riprap apron on the landside (LS) end. Grouted riprap spillway on the WS end. [Additional Reference(s): DWR Levee Log, 1992. USACE Sacramento O&M Manual 504, May 1965, (HLM 4.58)]. FS Date: 2/20/2014					

LM Start	4.46	Rating **	M	Issue No.	72 (cont)
LM End	4.46	Issue Type +	Ma	Location *	

Photo 1 of 2 : UCIP_FA_2019_30312_55745.jpg



WS view: U type concrete headwall, pipe, and flapgate on levee slope. Vegetation debris blocking outlet.

Photo 2 of 2 : UCIP_FA_2019_30312_55744.jpg



LS view: U type concrete headwall and CMP on levee slope. Needs cleaning and clearing of debris.

* Location LS : Land Side N/A : Not Applicable WS : Water Side CR : Crown	** Rating A : Acceptable M : Minimally Acceptable U : Unacceptable	N : Not Inspected/Rated C : Corrected A/W : Acceptable but Monitor & Maintain	+ Issue Type Ma : Maintenance Deficiency Ob : Design & System Obsolescence En : Enforcement
--	--	---	---

**Flood Control Project Maintenance
Levee Inspections**

Maintenance Issue Types Only, Levee Inspection Report By Mile - Fall 2019

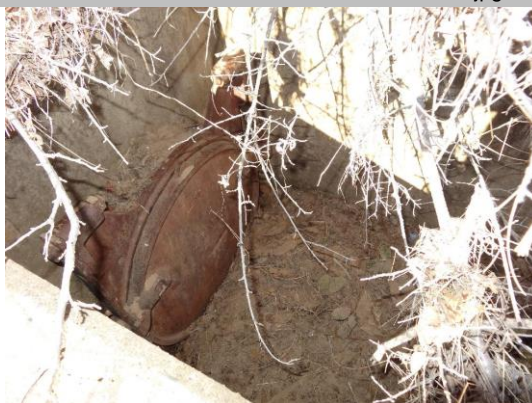
Butte County Department of Public Works

Waterway	Bank	Unit Miles	Inspection Start/End	Inspector
Unit No. 01 Mud Creek	Right	6.80	10/22/2019 10/22/2019	Makar Sokol

LM Start	4.81	Rating **	M	Issue No.	73	
LM End	4.81	Issue Type +	Ma	Location *		
Category	Supplemental			GPS Latitude/Longitude		
				Start	End	
Item	DRAFT DWR UCIP LMA Responsibility			39.780244 °	39.780244 °	
				-121.891267 °	-121.891267 °	
DWR ID	19221					
Comment Code						
Inspector Comment						
DS_ID:19221 FS_ID:30388 EP_NO: N/A Repair Type: Non-Urgent Crossing Status: Found UCIP Comments: CM Standpipe intake. Intake pipe with air vent. Steel rib-bar grit cover on the standpipe on landside levee toe.Needs cleaning and clearing on both ends of the pipe. FIELD_STRUCT_DESC: 24-inch corrugated metal gravity drainage pipe through the levee, 15 feet below the crown. Flap gate on the waterside (WS) end. Concrete U-shaped headwall on the WS end. Grouted riprap spillway on the WS end. Corrugated metal standpipe intake. Intake pipe with an air vent. Steel rib-bar grit cover on the standpipe on the landside (LS) toe. [Additional Reference(s): DWR Levee Log, 1992. USACE Sacramento O&M Manual 504, May 1965, (HLM 4.94)]. FS Date: 2/20/2014						

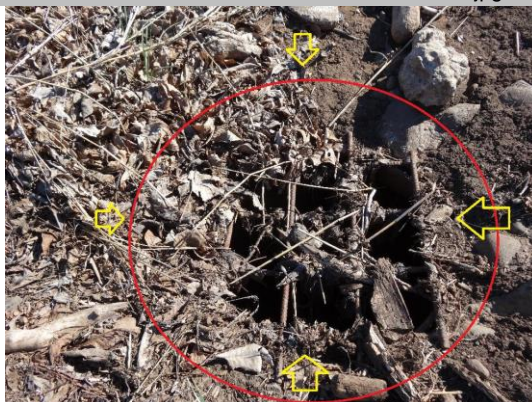
LM Start	4.81	Rating **	M	Issue No.	73 (cont)
LM End	4.81	Issue Type +	Ma	Location *	

Photo 1 of 2 : UCIP_FA_2019_30388_55891.jpg



WS view: U type concrete headwall, pipe, and flapgate on levee slope. Vegetation/soil debris blocking outlet.

Photo 2 of 2 : UCIP_FA_2019_30388_55890.jpg



LS view: Underground CM standpipe intake with steel grit on levee toe.

* Location LS : Land Side N/A : Not Applicable WS : Water Side CR : Crown	** Rating A : Acceptable M : Minimally Acceptable U : Unacceptable	N : Not Inspected/Rated C : Corrected A/W : Acceptable but Monitor & Maintain	+ Issue Type Ma : Maintenance Deficiency Ob : Design & System Obsolescence En : Enforcement
--	--	---	---

**Flood Control Project Maintenance
Levee Inspections**

Maintenance Issue Types Only, Levee Inspection Report By Mile - Fall 2019

Butte County Department of Public Works

Waterway	Bank	Unit Miles	Inspection Start/End	Inspector
Unit No. 01 Mud Creek	Right	6.80	10/22/2019 10/22/2019	Makar Sokol

LM Start	5.09	Rating **	A/W	Issue No.	75
LM End	5.09	Issue Type +	Ma	Location *	
Category	Supplemental			GPS Latitude/Longitude	
				Start	End
Item	DRAFT DWR UCIP LMA Responsibility			39.783636 °	39.783636 °
				-121.888463 °	-121.888463 °
DWR ID	19222				
Comment Code					
Inspector Comment					
DS_ID:19222					
FS_ID:30327					
EP_NO: N/A					
Repair Type: No Action Needed					
Crossing Status: Found					
UCIP Comments: Slide gate in CM stadpipe on waterside levee slope.					
FIELD_STRUCT_DESC: 36-inch corrugated metal gravity drainage pipe					
through the levee, 17 feet below the crown. Slide gate in a corrugated					
metal standpipe on the waterside (WS) slope. Flap gate on the WS					
end. Concrete U-shaped headwall on each end. Grouted riprap apron					
on the landside (LS) end. Grouted riprap spillway on the WS end.					
[Additional Reference(s): DWR Levee Log, 1992. USACE Sacramento					
O&M Manual 504, May 1965, (HLM 5.22)].					
FS Date: 2/20/2014					

LM Start	5.09	Rating **	A/W	Issue No.	75 (cont)
LM End	5.09	Issue Type +	Ma	Location *	

Photo 1 of 3 : UCIP_FA_2019_30327_55768.jpg



WS view: U type concrete headwall, pipe, and flapgate on levee slope.

Photo 2 of 3 : UCIP_FA_2019_30327_55767.jpg



WS view: CM standpipe with slide gate on levee slope.

* Location LS : Land Side N/A : Not Applicable WS : Water Side CR : Crown	** Rating A : Acceptable M : Minimally Acceptable U : Unacceptable	N : Not Inspected/Rated C : Corrected A/W : Acceptable but Monitor & Maintain	+ Issue Type Ma : Maintenance Deficiency Ob : Design & System Obsolescence En : Enforcement
--	--	---	---

**Flood Control Project Maintenance
Levee Inspections**

Maintenance Issue Types Only, Levee Inspection Report By Mile - Fall 2019

Butte County Department of Public Works

Waterway	Bank	Unit Miles	Inspection Start/End	Inspector
Unit No. 01 Mud Creek	Right	6.80	10/22/2019 10/22/2019	Makar Sokol

LM Start	5.09	Rating **	A/W	Issue No.	75 (cont)	
LM End	5.09	Issue Type +	Ma	Location *		
Category	Supplemental			GPS Latitude/Longitude		
				Start	End	
Item	DRAFT DWR UCIP LMA Responsibility			39.783636 °	39.783636 °	
				-121.888463 °	-121.888463 °	
DWR ID	19222					
Comment Code						
Inspector Comment						
DS_ID:19222						
FS_ID:30327						
EP_NO: N/A						
Repair Type: No Action Needed						
Crossing Status: Found						
UCIP Comments: Slide gate in CM stadpipe on waterside levee slope.						
FIELD_STRUCT_DESC: 36-inch corrugated metal gravity drainage pipe						
through the levee, 17 feet below the crown. Slide gate in a corrugated						
metal standpipe on the waterside (WS) slope. Flap gate on the WS						
end. Concrete U-shaped headwall on each end. Grouted riprap apron						
on the landside (LS) end. Grouted riprap spillway on the WS end.						
[Additional Reference(s): DWR Levee Log, 1992. USACE Sacramento						
O&M Manual 504, May 1965, (HLM 5.22)].						
FS Date: 2/20/2014						

Photo 3 of 3 : UCIP_FA_2019_30327_55766.jpg



LS view: U type concrete headwall and CMP on levee slope.

LM Start	5.20	Rating **	M	Issue No.	55
LM End	5.20	Issue Type +	Ma	Location *	LS
Category	Earthen Levee			GPS Latitude/Longitude	
				Start	End
Item	Vegetation			39.784234 °	39.784234 °
				-121.886589 °	-121.886589 °
DWR ID	DWR_NA0003_01_f_2016_55				
Comment Code					
V2 : Remove the wild growth other than native grasses from the levee slopes.					
Inspector Comment					

Photo 1 of 1 : FA_2019_NA0003_64_55_20190822_00023.jpg



View of the blackberries blocking visibility and access.

* Location LS : Land Side N/A : Not Applicable WS : Water Side CR : Crown	** Rating A : Acceptable M : Minimally Acceptable U : Unacceptable	N : Not Inspected/Rated C : Corrected A/W : Acceptable but Monitor & Maintain	+ Issue Type Ma : Maintenance Deficiency Ob : Design & System Obsolescence En : Enforcement
--	--	--	---

**Flood Control Project Maintenance
Levee Inspections**

Maintenance Issue Types Only, Levee Inspection Report By Mile - Fall 2019

Butte County Department of Public Works

Waterway	Bank	Unit Miles	Inspection Start/End	Inspector
Unit No. 01 Mud Creek	Right	6.80	10/22/2019 10/22/2019	Makar Sokol

LM Start	5.65	Rating **	M	Issue No.	35
LM End	5.65	Issue Type +	Ma	Location *	LS
Category	Earthen Levee			GPS Latitude/Longitude	
				Start	End
Item	Encroachments			39.789093 °	39.789093 °
				-121.886500 °	-121.886500 °
DWR ID	DWR_NA0003_01_f_2019_35				
Comment Code					
PR : Prunings					
Inspector Comment					
The pile of prunings should be removed from the landside toe easement.					

Photo 1 of 1 : FA_2019_NA0003_64_35_20191025_00057.jpg



View of the pile of prunings at the landside toe. Fall 2019.

LM Start	5.89	Rating **	C	Issue No.	44
LM End	5.89	Issue Type +	Ma	Location *	LS
Category	Earthen Levee			GPS Latitude/Longitude	
				Start	End
Item	Vegetation			39.792121 °	39.792121 °
				-121.886836 °	-121.886836 °
DWR ID	DWR_NA0003_01_f_2016_44				
Comment Code					
V2 : Remove the wild growth other than native grasses from the levee slopes.					
Inspector Comment					
Blackberry bramble should be removed from the landside slope and toe.					

No Photos

LM Start	5.91	Rating **	C	Issue No.	43
LM End	5.91	Issue Type +	Ma	Location *	LS
Category	Earthen Levee			GPS Latitude/Longitude	
				Start	End
Item	Vegetation			39.792482 °	39.792482 °
				-121.887078 °	-121.887078 °
DWR ID	DWR_NA0003_01_f_2016_43				
Comment Code					
V2 : Remove the wild growth other than native grasses from the levee slopes.					
Inspector Comment					
Blackberry bramble should be removed from the landside slope and toe.					

No Photos

* Location LS : Land Side N/A : Not Applicable WS : Water Side CR : Crown	** Rating A : Acceptable M : Minimally Acceptable U : Unacceptable	N : Not Inspected/Rated C : Corrected A/W : Acceptable but Monitor & Maintain	+ Issue Type Ma : Maintenance Deficiency Ob : Design & System Obsolescence En : Enforcement
--	--	---	---

**Flood Control Project Maintenance
Levee Inspections**

Maintenance Issue Types Only, Levee Inspection Report By Mile - Fall 2019

Butte County Department of Public Works

Waterway	Bank	Unit Miles	Inspection Start/End	Inspector
Unit No. 01 Mud Creek	Right	6.80	10/22/2019 10/22/2019	Makar Sokol

LM Start	5.96	Rating **	C	Issue No.	22
LM End	5.96	Issue Type +	Ma	Location *	LS
Category	Earthen Levee			GPS Latitude/Longitude	
				Start	End
Item	Vegetation			39.793116 °	39.793116 °
				-121.887296 °	-121.887296 °
DWR ID	DWR_NA0003_01_f_2016_22				
Comment Code					
V2 : Remove the wild growth other than native grasses from the levee slopes.					
Inspector Comment					
The blackberry brambles should be removed from the landside toe and the 10' easement.					

No Photos

LM Start	6.16	Rating **	C	Issue No.	34
LM End	6.16	Issue Type +	Ma	Location *	LS
Category	Earthen Levee			GPS Latitude/Longitude	
				Start	End
Item	Vegetation			39.795428 °	39.795428 °
				-121.885306 °	-121.885306 °
DWR ID	DWR_NA0003_01_s_2016_34				
Comment Code					
V2 : Remove the wild growth other than native grasses from the levee slopes.					
Inspector Comment					
Blackberry bramble should be removed from the landside toe.					

No Photos

* Location LS : Land Side N/A : Not Applicable WS : Water Side CR : Crown	** Rating A : Acceptable M : Minimally Acceptable U : Unacceptable	N : Not Inspected/Rated C : Corrected A/W : Acceptable but Monitor & Maintain	+ Issue Type Ma : Maintenance Deficiency Ob : Design & System Obsolescence En : Enforcement
--	--	---	---

**Flood Control Project Maintenance
Levee Inspections**

Maintenance Issue Types Only, Levee Inspection Report By Mile - Fall 2019

Butte County Department of Public Works

Waterway	Bank	Unit Miles	Inspection Start/End	Inspector
Unit No. 02 Mud Creek	Left	7.96	10/21/2019 10/21/2019	Makar Sokol

LM Start	0.23	Rating **	M	Issue No.	47	
LM End	0.23	Issue Type +	Ma	Location *		
Category	Supplemental			GPS Latitude/Longitude		
				Start	End	
Item	DRAFT DWR UCIP LMA Responsibility			39.797416°	39.797416°	
				-121.881675°	-121.881675°	
DWR ID	19234					
Comment Code						
Inspector Comment						
DS_ID:19234						
FS_ID:31667						
EP_NO: N/A						
Repair Type: Non-Urgent						
Crossing Status: Found						
UCIP Comments: Needs cleaning and clearing the culvert.						
FIELD_STRUCT_DESC: 24-inch corrugated metal gravity drainage pipe through the levee, 6.6 feet below the crown. Flap gate on the waterside (WS) end. Concrete U-shaped headwall on each end. Grouted riprap spillway on the WS end. [Additional Reference(s): DWR Levee Log, 1992. USACE Sacramento O&M Manual 504, May 1965, (HLM 0.25)].						
FS Date: 3/11/2014						

LM Start	0.23	Rating **	M	Issue No.	47 (cont)
LM End	0.23	Issue Type +	Ma	Location *	

Photo 1 of 3 : UCIP_FA_2019_31667_57968.jpg



WS view: CMP culvert with U type concrete headwall. Vegetation debris blocking outlet box.

Photo 2 of 3 : UCIP_FA_2019_31667_57967.jpg



WS view: U type concrete headwall, pipe, and flapgate on levee slope. Vegetation debris on outlet box.

* Location LS : Land Side N/A : Not Applicable WS : Water Side CR : Crown	** Rating A : Acceptable M : Minimally Acceptable U : Unacceptable	N : Not Inspected/Rated C : Corrected A/W : Acceptable but Monitor & Maintain	+ Issue Type Ma : Maintenance Deficiency Ob : Design & System Obsolescence En : Enforcement
--	--	---	---

**Flood Control Project Maintenance
Levee Inspections**

Maintenance Issue Types Only, Levee Inspection Report By Mile - Fall 2019

Butte County Department of Public Works

Waterway	Bank	Unit Miles	Inspection Start/End	Inspector
Unit No. 02 Mud Creek	Left	7.96	10/21/2019 10/21/2019	Makar Sokol

LM Start	0.23	Rating **	M	Issue No.	47 (cont)
LM End	0.23	Issue Type +	Ma	Location *	
Category	Supplemental			GPS Latitude/Longitude	
				Start	End
Item	DRAFT DWR UCIP LMA Responsibility			39.797416° -121.881675°	39.797416° -121.881675°
DWR ID	19234				
Comment Code					
Inspector Comment					
DS_ID:19234 FS_ID:31667 EP_NO: N/A Repair Type: Non-Urgent Crossing Status: Found UCIP Comments: Needs cleaning and clearing the culvert. FIELD_STRUCT_DESC: 24-inch corrugated metal gravity drainage pipe through the levee, 6.6 feet below the crown. Flap gate on the waterside (WS) end. Concrete U-shaped headwall on each end. Grouted riprap spillway on the WS end. [Additional Reference(s): DWR Levee Log, 1992. USACE Sacramento O&M Manual 504, May 1965, (HLM 0.25)]. FS Date: 3/11/2014					

Photo 3 of 3 : UCIP_FA_2019_31667_57966.jpg



LS view: U type concrete headwall and CMP on levee slope. Vegetation debris on inlet box.

LM Start	0.30	Rating **	M	Issue No.	29
LM End	0.30	Issue Type +	Ma	Location *	WS
Category	Earthen Levee			GPS Latitude/Longitude	
				Start	End
Item	Slope Stability			39.797134° -121.882829°	39.797134° -121.882829°
DWR ID	DWR_NA0003_02_f_2016_29				
Comment Code					
S3 : Repair the levee slope damaged by vehicle traffic and prevent access where possible.					
Inspector Comment					

No Photos

* Location LS : Land Side N/A : Not Applicable WS : Water Side CR : Crown	** Rating A : Acceptable M : Minimally Acceptable U : Unacceptable	N : Not Inspected/Rated C : Corrected A/W : Acceptable but Monitor & Maintain	+ Issue Type Ma : Maintenance Deficiency Ob : Design & System Obsolescence En : Enforcement
--	--	---	---

**Flood Control Project Maintenance
Levee Inspections**

Maintenance Issue Types Only, Levee Inspection Report By Mile - Fall 2019

Butte County Department of Public Works

Waterway	Bank	Unit Miles	Inspection Start/End	Inspector
Unit No. 02 Mud Creek	Left	7.96	10/21/2019 10/21/2019	Makar Sokol

LM Start	0.38	Rating **	M	Issue No.	31
LM End	0.38	Issue Type +	Ma	Location *	LS
Category	Earthen Levee			GPS Latitude/Longitude	
				Start	End
Item	Trim / Thin Trees			39.796062 °	39.796062 °
				-121.883440 °	-121.883440 °
DWR ID	DWR_NA0003_02_s _ 2019_31				
Comment Code					
T2 : Thin trees to allow visibility of the ground and room to flood fight.					
Inspector Comment					
Trees smaller than 4-inches in diameter at chest height should be removed.					

No Photos

LM Start	0.55	Rating **	M	Issue No.	28
LM End	0.55	Issue Type +	Ma	Location *	LS
Category	Earthen Levee			GPS Latitude/Longitude	
				Start	End
Item	Trim / Thin Trees			39.794345 °	39.794345 °
				-121.885423 °	-121.885423 °
DWR ID	DWR_NA0003_02_s _ 2019_28				
Comment Code					
T2 : Thin trees to allow visibility of the ground and room to flood fight.					
Inspector Comment					

No Photos

LM Start	0.58	Rating **	M	Issue No.	27
LM End	0.58	Issue Type +	Ma	Location *	LS
Category	Earthen Levee			GPS Latitude/Longitude	
				Start	End
Item	Trim / Thin Trees			39.793979 °	39.793979 °
				-121.885781 °	-121.885781 °
DWR ID	DWR_NA0003_02_s _ 2019_27				
Comment Code					
T2 : Thin trees to allow visibility of the ground and room to flood fight.					
Inspector Comment					
Trees smaller than 4-inches in diameter at chest height should be removed.					

No Photos

* Location LS : Land Side N/A : Not Applicable WS : Water Side CR : Crown	** Rating A : Acceptable M : Minimally Acceptable U : Unacceptable	N : Not Inspected/Rated C : Corrected A/W : Acceptable but Monitor & Maintain	+ Issue Type Ma : Maintenance Deficiency Ob : Design & System Obsolescence En : Enforcement
--	--	---	---

**Flood Control Project Maintenance
Levee Inspections**

Maintenance Issue Types Only, Levee Inspection Report By Mile - Fall 2019

Butte County Department of Public Works

Waterway	Bank	Unit Miles	Inspection Start/End	Inspector
Unit No. 02 Mud Creek	Left	7.96	10/21/2019 10/21/2019	Makar Sokol

LM Start	1.26	Rating **	M	Issue No.	48	
LM End	1.26	Issue Type +	Ma	Location *		
Category	Supplemental			GPS Latitude/Longitude		
				Start		End
Item	DRAFT DWR UCIP LMA Responsibility			39.784062 °		39.784062 °
				-121.884344 °		-121.884344 °
DWR ID	19235					
Comment Code						
Inspector Comment						
DS_ID:19235 FS_ID:30403 EP_NO: N/A Repair Type: Non-Urgent Crossing Status: Found UCIP Comments: Needs cleaning and clearing of debris. FIELD_STRUCT_DESC: 24-inch corrugated metal gravity drainage pipe through the levee, 12.5 feet below the crown. Flap gate on the waterside (WS) end. Concrete U-shaped headwall on each end. Grouted riprap apron on the landside (LS) end. Grouted riprap spillway on the WS end. [Additional Reference(s): DWR Levee Log, 1992. USACE Sacramento O&M Manual 504, May 1965, (HLM 1.34)]. FS Date: 2/24/2014						

LM Start	1.26	Rating **	M	Issue No.	48 (cont)
LM End	1.26	Issue Type +	Ma	Location *	

Photo 1 of 3 : UCIP_FA_2019_30403_55922.jpg



WS view: U type concrete headwall, pipe, and flapgate on levee slope.

Photo 2 of 3 : UCIP_FA_2019_30403_55921.jpg



LS view: U type concrete headwall and CMP on levee slope. Vegetation debris in inlet pipe.

* Location LS : Land Side N/A : Not Applicable WS : Water Side CR : Crown	** Rating A : Acceptable M : Minimally Acceptable U : Unacceptable	N : Not Inspected/Rated C : Corrected A/W : Acceptable but Monitor & Maintain	+ Issue Type Ma : Maintenance Deficiency Ob : Design & System Obsolescence En : Enforcement
--	--	---	---

**Flood Control Project Maintenance
Levee Inspections**

Maintenance Issue Types Only, Levee Inspection Report By Mile - Fall 2019

Butte County Department of Public Works

Waterway	Bank	Unit Miles	Inspection Start/End	Inspector
Unit No. 02 Mud Creek	Left	7.96	10/21/2019 10/21/2019	Makar Sokol

LM Start	1.26	Rating **	M	Issue No.	48 (cont)	
LM End	1.26	Issue Type +	Ma	Location *		
Category	Supplemental			GPS Latitude/Longitude		
				Start	End	
Item	DRAFT DWR UCIP LMA Responsibility			39.784062 °	39.784062 °	
				-121.884344 °	-121.884344 °	
DWR ID	19235					
Comment Code						
Inspector Comment						
DS_ID:19235 FS_ID:30403 EP_NO: N/A Repair Type: Non-Urgent Crossing Status: Found UCIP Comments: Needs cleaning and clearing of debris. FIELD_STRUCT_DESC: 24-inch corrugated metal gravity drainage pipe through the levee, 12.5 feet below the crown. Flap gate on the waterside (WS) end. Concrete U-shaped headwall on each end. Grouted riprap apron on the landside (LS) end. Grouted riprap spillway on the WS end. [Additional Reference(s): DWR Levee Log, 1992. USACE Sacramento O&M Manual 504, May 1965, (HLM 1.34)]. FS Date: 2/24/2014						

Photo 3 of 3 : UCIP_FA_2019_30403_55920.jpg



LS view: inside view of CMP on levee slope. Needs cleaning and clearing.

LM Start	1.45	Rating **	C	Issue No.	2
LM End	1.45	Issue Type +	Ma	Location *	LS
Category	Earthen Levee			GPS Latitude/Longitude	
				Start	End
Item	Vegetation			39.783074 °	39.783074 °
				-121.887610 °	-121.887610 °
DWR ID	DWR_NA0003_02_s_2019_2				
Comment Code					
V2 : Remove the wild growth other than native grasses from the levee slopes.					
Inspector Comment					
The blackberry bushes should be removed from the landside toe and the trees should be trimmed 5 feet off the ground.					

No Photos

* Location LS : Land Side N/A : Not Applicable WS : Water Side CR : Crown	** Rating A : Acceptable M : Minimally Acceptable U : Unacceptable	N : Not Inspected/Rated C : Corrected A/W : Acceptable but Monitor & Maintain	+ Issue Type Ma : Maintenance Deficiency Ob : Design & System Obsolescence En : Enforcement
--	--	---	---

**Flood Control Project Maintenance
Levee Inspections**

Maintenance Issue Types Only, Levee Inspection Report By Mile - Fall 2019

Butte County Department of Public Works

Waterway	Bank	Unit Miles	Inspection Start/End	Inspector
Unit No. 02 Mud Creek	Left	7.96	10/21/2019 10/21/2019	Makar Sokol

LM Start	1.46	Rating **	M	Issue No.	49
LM End	1.46	Issue Type +	Ma	Location *	
Category	Supplemental			GPS Latitude/Longitude	
				Start	End
Item	DRAFT DWR UCIP LMA Responsibility			39.782980 °	39.782980 °
				-121.887834 °	-121.887834 °
DWR ID	19237				
Comment Code					
Inspector Comment					
DS_ID:19237					
FS_ID:30743					
EP_NO: N/A					
Repair Type: Non-Urgent					
Crossing Status: Found					
UCIP Comments: Needs cleaning and clearing of debris.					
FIELD_STRUCT_DESC: 24-inch corrugated metal gravity drainage pipe through the levee, 11 feet below the crown. Flap gate on the waterside (WS) end. Concrete U-shaped headwall on each end. Grouted riprap apron on the landside (LS) end. Grouted riprap spillway on the WS end. [Additional Reference(s): DWR Levee Log, 1992. USACE Sacramento O&M Manual 504, May 1965, (HLM 1.55)].					
FS Date: 2/24/2014					

LM Start	1.46	Rating **	M	Issue No.	49 (cont)
LM End	1.46	Issue Type +	Ma	Location *	

Photo 1 of 2 : UCIP_FA_2019_30743_56641.jpg



WS view: U type concrete headwall, pipe, and flapgate on levee slope. Debris in outlet box.

Photo 2 of 2 : UCIP_FA_2019_30743_56640.jpg



LS view: U type concrete headwall and CMP on levee slope. Vegetation debris and soil in inlet area.

* Location LS : Land Side N/A : Not Applicable WS : Water Side CR : Crown	** Rating A : Acceptable M : Minimally Acceptable U : Unacceptable	N : Not Inspected/Rated C : Corrected A/W : Acceptable but Monitor & Maintain	+ Issue Type Ma : Maintenance Deficiency Ob : Design & System Obsolescence En : Enforcement
--	--	---	---

**Flood Control Project Maintenance
Levee Inspections**

Maintenance Issue Types Only, Levee Inspection Report By Mile - Fall 2019

Butte County Department of Public Works

Waterway	Bank	Unit Miles	Inspection Start/End	Inspector
Unit No. 02 Mud Creek	Left	7.96	10/21/2019 10/21/2019	Makar Sokol

LM Start	1.62	Rating **	N	Issue No.	32
LM End	1.62	Issue Type +	Ma	Location *	LS
Category	Earthen Levee			GPS Latitude/Longitude	
				Start	End
Item	Trim / Thin Trees			39.781173 °	39.781173 °
				-121.889526 °	-121.889526 °
DWR ID	DWR_NA0003_02_f_2016_32				
Comment Code					
T5 : Tree stumps.					
Inspector Comment					

No Photos

LM Start	1.67	Rating **	M	Issue No.	4
LM End	1.67	Issue Type +	Ma	Location *	LS
Category	Earthen Levee			GPS Latitude/Longitude	
				Start	End
Item	Trim / Thin Trees			39.780530 °	39.780530 °
				-121.889938 °	-121.889938 °
DWR ID	DWR_NA0003_02_s_2019_4				
Comment Code					
T1 : Trim trees to at least five feet above ground level.					
Inspector Comment					

No Photos

LM Start	2.05	Rating **	M	Issue No.	25
LM End	2.05	Issue Type +	Ma	Location *	LS
Category	Earthen Levee			GPS Latitude/Longitude	
				Start	End
Item	Slope Stability			39.775748 °	39.775748 °
				-121.892958 °	-121.892958 °
DWR ID	DWR_NA0003_02_f_2019_25				
Comment Code					
S3 : Repair the levee slope damaged by vehicle traffic and prevent access where possible.					
Inspector Comment					

Photo 1 of 1 : FA_2019_NA0003_65_25_20191025_00064.jpg



View of the erosion on the landside slope due to vehicle traffic. Fall 2019.

*** Location**
 LS : Land Side N/A : Not Applicable
 WS : Water Side
 CR : Crown

**** Rating**
 A : Acceptable N : Not Inspected/Rated
 M : Minimally Acceptable C : Corrected
 U : Unacceptable A/W : Acceptable but Monitor & Maintain

+ Issue Type
 Ma : Maintenance Deficiency
 Ob : Design & System Obsolescence
 En : Enforcement

**Flood Control Project Maintenance
Levee Inspections**

Maintenance Issue Types Only, Levee Inspection Report By Mile - Fall 2019

Butte County Department of Public Works

Waterway	Bank	Unit Miles	Inspection Start/End	Inspector
Unit No. 02 Mud Creek	Left	7.96	10/21/2019 10/21/2019	Makar Sokol

LM Start	2.34	Rating **	M	Issue No.	52	
LM End	2.34	Issue Type +	Ma	Location *		
Category	Supplemental			GPS Latitude/Longitude		
				Start		End
Item	DRAFT DWR UCIP LMA Responsibility			39.772185 °		39.772185 °
				-121.895681 °		-121.895681 °
DWR ID	19239					
Comment Code						
Inspector Comment						
DS_ID:19239						
FS_ID:30763						
EP_NO: N/A						
Repair Type: Non-Urgent						
Crossing Status: Found						
UCIP Comments: Debris in landside inlet area. Needs cleaning and clearing of debris.						
FIELD_STRUCT_DESC: 24-inch corrugated metal gravity drainage pipe through the levee, 10 feet below the crown. Flap gate on the waterside (WS) end. Concrete U-shaped headwall on each end. Grouted riprap apron on the landside (LS) end. Grouted riprap spillway on the WS end. [Additional Reference(s): DWR Levee Log, 1992. USACE Sacramento O&M Manual 504, May 1965, (HLM 2.44)].						
FS Date: 2/24/2014						

LM Start	2.34	Rating **	M	Issue No.	52 (cont)
LM End	2.34	Issue Type +	Ma	Location *	

Photo 1 of 3 : UCIP_FA_2019_30763_56662.jpg



WS view: U type concrete headwall, pipe, and flapgate on levee slope.
Vegetation debris blocking outlet.

Photo 2 of 3 : UCIP_FA_2019_30763_56661.jpg



LS view: U type concrete headwall and CMP on levee slope.

* Location LS : Land Side N/A : Not Applicable WS : Water Side CR : Crown	** Rating A : Acceptable M : Minimally Acceptable U : Unacceptable	N : Not Inspected/Rated C : Corrected A/W : Acceptable but Monitor & Maintain	+ Issue Type Ma : Maintenance Deficiency Ob : Design & System Obsolescence En : Enforcement
--	--	---	---

**Flood Control Project Maintenance
Levee Inspections**

Maintenance Issue Types Only, Levee Inspection Report By Mile - Fall 2019

Butte County Department of Public Works

Waterway	Bank	Unit Miles	Inspection Start/End	Inspector
Unit No. 02 Mud Creek	Left	7.96	10/21/2019 10/21/2019	Makar Sokol

LM Start	2.34	Rating **	M	Issue No.	52 (cont)	
LM End	2.34	Issue Type +	Ma	Location *		
Category	Supplemental			GPS Latitude/Longitude		
				Start		End
Item	DRAFT DWR UCIP LMA Responsibility			39.772185 °		39.772185 °
				-121.895681 °		-121.895681 °
DWR ID	19239					
Comment Code						
Inspector Comment						
DS_ID:19239 FS_ID:30763 EP_NO: N/A Repair Type: Non-Urgent Crossing Status: Found UCIP Comments: Debris in landside inlet area. Needs cleaning and clearing of debris. FIELD_STRUCT_DESC: 24-inch corrugated metal gravity drainage pipe through the levee, 10 feet below the crown. Flap gate on the waterside (WS) end. Concrete U-shaped headwall on each end. Grouted riprap apron on the landside (LS) end. Grouted riprap spillway on the WS end. [Additional Reference(s): DWR Levee Log, 1992. USACE Sacramento O&M Manual 504, May 1965, (HLM 2.44)]. FS Date: 2/24/2014						

Photo 3 of 3 : UCIP_FA_2019_30763_56660.jpg



LS view: inside view of CMP on levee slope. Needs cleaning and clearing.

LM Start	2.54	Rating **	A/W	Issue No.	41
LM End	2.68	Issue Type +	Ma	Location *	WS
Category	Supplemental			GPS Latitude/Longitude	
				Start	End
Item	2017 USACE Erosion Survey			39.771186°	39.769616°
				-121.899060°	-121.900854°
DWR ID	DWR_ST0010_02_f_2022_11				
Comment Code					
Inspector Comment					
2017 Site ID: MUD 2.8 L					
Status: Eroding New					
2017 Field Notes: Large erosion scarp along lower toe.					
Site History:					

No Photos

* Location LS : Land Side N/A : Not Applicable WS : Water Side CR : Crown	** Rating A : Acceptable M : Minimally Acceptable U : Unacceptable	N : Not Inspected/Rated C : Corrected A/W : Acceptable but Monitor & Maintain	+ Issue Type Ma : Maintenance Deficiency Ob : Design & System Obsolescence En : Enforcement
--	--	---	---

**Flood Control Project Maintenance
Levee Inspections**

Maintenance Issue Types Only, Levee Inspection Report By Mile - Fall 2019

Butte County Department of Public Works

Waterway	Bank	Unit Miles	Inspection Start/End	Inspector
Unit No. 02 Mud Creek	Left	7.96	10/21/2019 10/21/2019	Makar Sokol

LM Start	2.74	Rating **	M	Issue No.	53
LM End	2.74	Issue Type +	Ma	Location *	
Category	Supplemental			GPS Latitude/Longitude	
				Start	End
Item	DRAFT DWR UCIP LMA Responsibility			39.768741 °	39.768741 °
				-121.901176 °	-121.901176 °
DWR ID	19240				
Comment Code					
Inspector Comment					
DS_ID:19240 FS_ID:30783 EP_NO: N/A Repair Type: Non-Urgent Crossing Status: Found UCIP Comments: Needs cleaning and clearing of debris. FIELD_STRUCT_DESC: 24-inch corrugated metal gravity drainage pipe through the levee, 10 feet below the crown. Flap gate on the waterside (WS) end. Concrete U-shaped headwall on each end. Grouted riprap apron on the landside (LS) end. Grouted riprap spillway on the WS end. [Additional Reference(s): DWR Levee Log, 1992. USACE Sacramento O&M Manual 504, May 1965, (HLM 2.86)]. FS Date: 2/24/2014					

LM Start	2.74	Rating **	M	Issue No.	53 (cont)
LM End	2.74	Issue Type +	Ma	Location *	

Photo 1 of 3 : UCIP_FA_2019_30783_56682.jpg



WS view: U type concrete headwall, pipe, and flapgate on levee slope. Gate not fully closed. Debris and soil in outlet box.

Photo 2 of 3 : UCIP_FA_2019_30783_56681.jpg



LS view: U type concrete headwall and CMP on levee slope. Debris and soil in inlet box.

* Location LS : Land Side N/A : Not Applicable WS : Water Side CR : Crown	** Rating A : Acceptable M : Minimally Acceptable U : Unacceptable	N : Not Inspected/Rated C : Corrected A/W : Acceptable but Monitor & Maintain	+ Issue Type Ma : Maintenance Deficiency Ob : Design & System Obsolescence En : Enforcement
--	--	---	---

**Flood Control Project Maintenance
Levee Inspections**

Maintenance Issue Types Only, Levee Inspection Report By Mile - Fall 2019

Butte County Department of Public Works

Waterway	Bank	Unit Miles	Inspection Start/End	Inspector
Unit No. 02 Mud Creek	Left	7.96	10/21/2019 10/21/2019	Makar Sokol

LM Start	2.74	Rating **	M	Issue No.	53 (cont)	
LM End	2.74	Issue Type +	Ma	Location *		
Category	Supplemental			GPS Latitude/Longitude		
				Start		End
Item	DRAFT DWR UCIP LMA Responsibility			39.768741 °		39.768741 °
				-121.901176 °		-121.901176 °
DWR ID	19240					
Comment Code						
Inspector Comment						
DS_ID:19240 FS_ID:30783 EP_NO: N/A Repair Type: Non-Urgent Crossing Status: Found UCIP Comments: Needs cleaning and clearing of debris. FIELD_STRUCT_DESC: 24-inch corrugated metal gravity drainage pipe through the levee, 10 feet below the crown. Flap gate on the waterside (WS) end. Concrete U-shaped headwall on each end. Grouted riprap apron on the landside (LS) end. Grouted riprap spillway on the WS end. [Additional Reference(s): DWR Levee Log, 1992. USACE Sacramento O&M Manual 504, May 1965, (HLM 2.86)]. FS Date: 2/24/2014						

Photo 3 of 3 : UCIP_FA_2019_30783_56680.jpg



LS view: inside view of CMP on levee slope. Needs cleaning and clearing.

LM Start	3.08	Rating **	A/W	Issue No.	42
LM End	3.16	Issue Type +	Ma	Location *	WS
Category	Supplemental			GPS Latitude/Longitude	
				Start	End
Item	2017 USACE Erosion Survey			39.765543 °	39.764869 °
				-121.905367 °	-121.906737 °
DWR ID	DWR_ST0010_02_f_2022_12				
Comment Code					
Inspector Comment					
2017 Site ID: MUD 3.3 L					
Status: Eroding New					
2017 Field Notes: Large mass failure of lower bank slope.					
Site History:					

No Photos

* Location LS : Land Side N/A : Not Applicable WS : Water Side CR : Crown	** Rating A : Acceptable M : Minimally Acceptable U : Unacceptable	N : Not Inspected/Rated C : Corrected A/W : Acceptable but Monitor & Maintain	+ Issue Type Ma : Maintenance Deficiency Ob : Design & System Obsolescence En : Enforcement
--	--	---	---

**Flood Control Project Maintenance
Levee Inspections**

Maintenance Issue Types Only, Levee Inspection Report By Mile - Fall 2019

Butte County Department of Public Works

Waterway	Bank	Unit Miles	Inspection Start/End	Inspector
Unit No. 02 Mud Creek	Left	7.96	10/21/2019 10/21/2019	Makar Sokol

LM Start	3.50	Rating **	M	Issue No.	54	
LM End	3.50	Issue Type +	Ma	Location *		
Category	Supplemental			GPS Latitude/Longitude		
				Start		End
Item	DRAFT DWR UCIP LMA Responsibility			39.760847 °		39.760847 °
				-121.910265 °		-121.910265 °
DWR ID	19241					
Comment Code						
Inspector Comment						
DS_ID:19241 FS_ID:30803 EP_NO: N/A Repair Type: Non-Urgent Crossing Status: Found UCIP Comments: Needs cleaning and clearing of debris. FIELD_STRUCT_DESC: 24-inch corrugated metal gravity drainage pipe through the levee, 6.5 feet below the crown. Flap gate on the waterside (WS) end. Concrete U-shaped headwall on each end. Grouted riprap apron on the landside (LS) end. Grouted riprap spillway on the WS end. [Additional Reference(s): DWR Levee Log, 1992. USACE Sacramento O&M Manual 504, May 1965, (HLM 3.64)]. FS Date: 2/24/2014						

LM Start	3.50	Rating **	M	Issue No.	54 (cont)
LM End	3.50	Issue Type +	Ma	Location *	

Photo 1 of 3 : UCIP_FA_2019_30803_56685.jpg



WS view: U type concrete headwall, pipe, and flapgate on levee slope. Vegetation debris and soil blocking outlet.

Photo 2 of 3 : UCIP_FA_2019_30803_56684.jpg



LS view: U type concrete headwall and CMP on levee slope. Vegetation debris and soil blocking inlet.

* Location LS : Land Side N/A : Not Applicable WS : Water Side CR : Crown	** Rating A : Acceptable M : Minimally Acceptable U : Unacceptable	N : Not Inspected/Rated C : Corrected A/W : Acceptable but Monitor & Maintain	+ Issue Type Ma : Maintenance Deficiency Ob : Design & System Obsolescence En : Enforcement
--	--	---	---

**Flood Control Project Maintenance
Levee Inspections**

Maintenance Issue Types Only, Levee Inspection Report By Mile - Fall 2019

Butte County Department of Public Works

Waterway	Bank	Unit Miles	Inspection Start/End	Inspector
Unit No. 02 Mud Creek	Left	7.96	10/21/2019 10/21/2019	Makar Sokol

LM Start	3.50	Rating **	M	Issue No.	54 (cont)	
LM End	3.50	Issue Type +	Ma	Location *		
Category	Supplemental			GPS Latitude/Longitude		
				Start		End
Item	DRAFT DWR UCIP LMA Responsibility			39.760847 °		39.760847 °
				-121.910265 °		-121.910265 °
DWR ID	19241					
Comment Code						
Inspector Comment						
DS_ID:19241 FS_ID:30803 EP_NO: N/A Repair Type: Non-Urgent Crossing Status: Found UCIP Comments: Needs cleaning and clearing of debris. FIELD_STRUCT_DESC: 24-inch corrugated metal gravity drainage pipe through the levee, 6.5 feet below the crown. Flap gate on the waterside (WS) end. Concrete U-shaped headwall on each end. Grouted riprap apron on the landside (LS) end. Grouted riprap spillway on the WS end. [Additional Reference(s): DWR Levee Log, 1992. USACE Sacramento O&M Manual 504, May 1965, (HLM 3.64)]. FS Date: 2/24/2014						

Photo 3 of 3 : UCIP_FA_2019_30803_56683.jpg



LS view: inside view of CMP on levee slope. Needs cleaning and clearing.

LM Start	3.52	Rating **	M	Issue No.	10
LM End	3.52	Issue Type +	Ma	Location *	LS
Category	Earthen Levee			GPS Latitude/Longitude	
				Start	End
Item	Slope Stability			39.760582°	39.760582°
				-121.910303°	-121.910303°
DWR ID	DWR_NA0003_02_f_2015_10				
Comment Code					
S3 : Repair the levee slope damaged by vehicle traffic and prevent access where possible.					
Inspector Comment					

Photo 1 of 1 : FA_2019_NA0003_65_10_20190822_00003.jpg



View of the vehicle erosion along the landside slope.

* Location
 LS : Land Side N/A : Not Applicable
 WS : Water Side
 CR : Crown

** Rating
 A : Acceptable N : Not Inspected/Rated
 M : Minimally Acceptable C : Corrected
 U : Unacceptable A/W : Acceptable but Monitor & Maintain

+ Issue Type
 Ma : Maintenance Deficiency
 Ob : Design & System Obsolescence
 En : Enforcement

**Flood Control Project Maintenance
Levee Inspections**

Maintenance Issue Types Only, Levee Inspection Report By Mile - Fall 2019

Butte County Department of Public Works

Waterway	Bank	Unit Miles	Inspection Start/End	Inspector
Unit No. 02 Mud Creek	Left	7.96	10/21/2019 10/21/2019	Makar Sokol

LM Start	3.75	Rating **	C	Issue No.	40
LM End	3.75	Issue Type +	Ma	Location *	LS
Category	Earthen Levee		GPS Latitude/Longitude		
			Start	End	
Item	Encroachments		39.757831 °	39.757831 °	
			-121.911920 °	-121.911920 °	
DWR ID	DWR_NA0003_02_s _ 2019_40				
Comment Code					
DE : Debris					
Inspector Comment					
The pile of debris should be removed from the landside slope.					

No Photos

LM Start	4.08	Rating **	C	Issue No.	43
LM End	4.08	Issue Type +	Ma	Location *	WS
Category	Earthen Levee		GPS Latitude/Longitude		
			Start	End	
Item	Slope Stability		39.755092 °	39.755092 °	
			-121.913104 °	-121.913104 °	
DWR ID	DWR_NA0003_02_s _ 2019_43				
Comment Code					
S3 : Repair the levee slope damaged by vehicle traffic and prevent access where possible.					
Inspector Comment					

No Photos

LM Start	4.17	Rating **	C	Issue No.	44
LM End	4.17	Issue Type +	Ma	Location *	WS
Category	Earthen Levee		GPS Latitude/Longitude		
			Start	End	
Item	Encroachments		39.754324 °	39.754324 °	
			-121.913683 °	-121.913683 °	
DWR ID	DWR_NA0003_02_s _ 2019_44				
Comment Code					
DE : Debris					
Inspector Comment					
The debris should be removed from the waterside slope.					

No Photos

* Location LS : Land Side N/A : Not Applicable WS : Water Side CR : Crown	** Rating A : Acceptable M : Minimally Acceptable U : Unacceptable	N : Not Inspected/Rated C : Corrected A/W : Acceptable but Monitor & Maintain	+ Issue Type Ma : Maintenance Deficiency Ob : Design & System Obsolescence En : Enforcement
--	--	---	---

**Flood Control Project Maintenance
Levee Inspections**

Maintenance Issue Types Only, Levee Inspection Report By Mile - Fall 2019

Butte County Department of Public Works

Waterway	Bank	Unit Miles	Inspection Start/End	Inspector
Unit No. 02 Mud Creek	Left	7.96	10/21/2019 10/21/2019	Makar Sokol

LM Start	4.61	Rating **	M	Issue No.	55
LM End	4.61	Issue Type +	Ma	Location *	
Category	Supplemental			GPS Latitude/Longitude	
				Start	End
Item	DRAFT DWR UCIP LMA Responsibility			39.748731 °	39.748731 °
				-121.917577 °	-121.917577 °
DWR ID	19245				
Comment Code					
Inspector Comment					
DS_ID:19245 FS_ID:31028 EP_NO: N/A Repair Type: Non-Urgent Crossing Status: Found UCIP Comments: Needs cleaning and clearing of debris. FIELD_STRUCT_DESC: 24-inch corrugated metal gravity drainage pipe through the levee, 10 feet below the crown. Flap gate on the waterside (WS) end. Concrete U-shaped headwall on each end. Grouted riprap apron on the landside (LS) end. Grouted riprap spillway on the WS end. [Additional Reference(s): DWR Levee Log, 1992. USACE Sacramento O&M Manual 504, May 1965, (HLM 4.77)]. FS Date: 2/25/2014					

LM Start	4.61	Rating **	M	Issue No.	55 (cont)
LM End	4.61	Issue Type +	Ma	Location *	

Photo 1 of 3 : UCIP_FA_2019_31028_56913.jpg



WS view: U type concrete headwall, pipe, and flapgate on levee slope.
Soil/mud on outlet box.

Photo 2 of 3 : UCIP_FA_2019_31028_56912.jpg



LS view: U type concrete headwall and CMP on levee slope.

* Location LS : Land Side N/A : Not Applicable WS : Water Side CR : Crown	** Rating A : Acceptable M : Minimally Acceptable U : Unacceptable	N : Not Inspected/Rated C : Corrected A/W : Acceptable but Monitor & Maintain	+ Issue Type Ma : Maintenance Deficiency Ob : Design & System Obsolescence En : Enforcement
--	--	---	---

**Flood Control Project Maintenance
Levee Inspections**

Maintenance Issue Types Only, Levee Inspection Report By Mile - Fall 2019

Butte County Department of Public Works

Waterway	Bank	Unit Miles	Inspection Start/End	Inspector
Unit No. 02 Mud Creek	Left	7.96	10/21/2019 10/21/2019	Makar Sokol

LM Start	4.61	Rating **	M	Issue No.	55 (cont)
LM End	4.61	Issue Type +	Ma	Location *	
Category	Supplemental			GPS Latitude/Longitude	
				Start	End
Item	DRAFT DWR UCIP LMA Responsibility			39.748731 °	39.748731 °
				-121.917577 °	-121.917577 °
DWR ID	19245				
Comment Code					
Inspector Comment					
DS_ID:19245 FS_ID:31028 EP_NO: N/A Repair Type: Non-Urgent Crossing Status: Found UCIP Comments: Needs cleaning and clearing of debris. FIELD_STRUCT_DESC: 24-inch corrugated metal gravity drainage pipe through the levee, 10 feet below the crown. Flap gate on the waterside (WS) end. Concrete U-shaped headwall on each end. Grouted riprap apron on the landside (LS) end. Grouted riprap spillway on the WS end. [Additional Reference(s): DWR Levee Log, 1992. USACE Sacramento O&M Manual 504, May 1965, (HLM 4.77)]. FS Date: 2/25/2014					

Photo 3 of 3 : UCIP_FA_2019_31028_56911.jpg



LS view: inside view of CMP on levee slope. Needs cleaning and clearing.

LM Start	5.64	Rating **	M	Issue No.	56
LM End	5.64	Issue Type +	Ma	Location *	
Category	Supplemental			GPS Latitude/Longitude	
				Start	End
Item	DRAFT DWR UCIP LMA Responsibility			39.738898 °	39.738898 °
				-121.930242 °	-121.930242 °
DWR ID	19247				
Comment Code					
Inspector Comment					
DS_ID:19247					
FS_ID:31031					
EP_NO: N/A					
Repair Type: Non-Urgent					
Crossing Status: Found					
UCIP Comments: Needs cleaning and clearing of debris.					
FIELD_STRUCT_DESC: 24-inch corrugated metal gravity drainage pipe through the levee, 11.5 feet below the crown. Flap gate on the waterside (WS) end. Concrete U-shaped headwall on each end. Grouted riprap apron on the landside (LS) end. Grouted riprap spillway on the WS end. [Additional Reference(s): DWR Levee Log, 1992. USACE Sacramento O&M Manual 504, May 1965, (HLM 5.83)].					
FS Date: 2/25/2014					

Photo 1 of 3 : UCIP_FA_2019_31031_56917.jpg



WS view: U type concrete headwall, pipe, and flapgate on levee slope. Soil/mud on outlet box.

* Location LS : Land Side N/A : Not Applicable WS : Water Side CR : Crown	** Rating A : Acceptable M : Minimally Acceptable U : Unacceptable	N : Not Inspected/Rated C : Corrected A/W : Acceptable but Monitor & Maintain	+ Issue Type Ma : Maintenance Deficiency Ob : Design & System Obsolescence En : Enforcement
--	--	---	---

**Flood Control Project Maintenance
Levee Inspections**

Maintenance Issue Types Only, Levee Inspection Report By Mile - Fall 2019

Butte County Department of Public Works

Waterway	Bank	Unit Miles	Inspection Start/End	Inspector
Unit No. 02 Mud Creek	Left	7.96	10/21/2019 10/21/2019	Makar Sokol

LM Start	5.64	Rating **	M	Issue No.	56 (cont)	
LM End	5.64	Issue Type +	Ma	Location *		
Category	Supplemental			GPS Latitude/Longitude		
				Start	End	
Item	DRAFT DWR UCIP LMA Responsibility			39.738898 °	39.738898 °	
				-121.930242 °	-121.930242 °	
DWR ID	19247					
Comment Code						
Inspector Comment						
DS_ID:19247 FS_ID:31031 EP_NO: N/A Repair Type: Non-Urgent Crossing Status: Found UCIP Comments: Needs cleaning and clearing of debris. FIELD_STRUCT_DESC: 24-inch corrugated metal gravity drainage pipe through the levee, 11.5 feet below the crown. Flap gate on the waterside (WS) end. Concrete U-shaped headwall on each end. Grouted riprap apron on the landside (LS) end. Grouted riprap spillway on the WS end. [Additional Reference(s): DWR Levee Log, 1992. USACE Sacramento O&M Manual 504, May 1965, (HLM 5.83)]. FS Date: 2/25/2014						

LM Start	5.64	Rating **	M	Issue No.	56 (cont)
LM End	5.64	Issue Type +	Ma	Location *	

Photo 2 of 3 : UCIP_FA_2019_31031_56916.jpg



LS view: U type concrete headwall and CMP on levee slope. Soil/mud on inlet box.

Photo 3 of 3 : UCIP_FA_2019_31031_56915.jpg



LS view: inside view of CMP on levee slope. Needs cleaning and clearing.

* Location LS : Land Side N/A : Not Applicable WS : Water Side CR : Crown	** Rating A : Acceptable M : Minimally Acceptable U : Unacceptable	N : Not Inspected/Rated C : Corrected A/W : Acceptable but Monitor & Maintain	+ Issue Type Ma : Maintenance Deficiency Ob : Design & System Obsolescence En : Enforcement
--	--	---	---

**Flood Control Project Maintenance
Levee Inspections**

Maintenance Issue Types Only, Levee Inspection Report By Mile - Fall 2019

Butte County Department of Public Works

Waterway	Bank	Unit Miles	Inspection Start/End	Inspector
Unit No. 02 Mud Creek	Left	7.96	10/21/2019 10/21/2019	Makar Sokol

LM Start	6.09	Rating **	M	Issue No.	57	
LM End	6.09	Issue Type +	Ma	Location *		
Category	Supplemental			GPS Latitude/Longitude		
				Start		End
Item	DRAFT DWR UCIP LMA Responsibility			39.733297 °		39.733297 °
				-121.930411 °		-121.930411 °
DWR ID	19248					
Comment Code						
Inspector Comment						
DS_ID:19248 FS_ID:41376 EP_NO: N/A Repair Type: Non-Urgent Crossing Status: Found UCIP Comments: Needs cleaning and clearing of debris. FIELD_STRUCT_DESC: [Channel Slough Drainage Structure] 1 of 2: 42-inch corrugated metal gravity drainage pipe through the levee, 16 feet below the crown. Flap gate on the waterside (WS) end. Slide gate in a corrugated metal pipe (CMP) riser on the WS slope. Concrete U-shaped headwall on each end. Grouted riprap apron and rock revetment on the landside (LS) end. [Additional Reference(s): DWR Levee Log, 1992. USACE Sacramento O&M Manual 504, May 1965, (HLM 6.30)]. FS Date: 2/25/2014						

LM Start	6.09	Rating **	M	Issue No.	57 (cont)
LM End	6.09	Issue Type +	Ma	Location *	

Photo 1 of 3 : UCIP_FA_2019_41376_56920.jpg



WS view: slide gates in CMP risers on levee slope.

Photo 2 of 3 : UCIP_FA_2019_41376_56919.jpg



WS view: U type concrete headwall, pipes, and flapgates on levee slope. Vegetation debris on outlet box.

* Location LS : Land Side N/A : Not Applicable WS : Water Side CR : Crown	** Rating A : Acceptable M : Minimally Acceptable U : Unacceptable	N : Not Inspected/Rated C : Corrected A/W : Acceptable but Monitor & Maintain	+ Issue Type Ma : Maintenance Deficiency Ob : Design & System Obsolescence En : Enforcement
--	--	---	---

**Flood Control Project Maintenance
Levee Inspections**

Maintenance Issue Types Only, Levee Inspection Report By Mile - Fall 2019

Butte County Department of Public Works

Waterway	Bank	Unit Miles	Inspection Start/End	Inspector
Unit No. 02 Mud Creek	Left	7.96	10/21/2019 10/21/2019	Makar Sokol

LM Start	6.09	Rating **	M	Issue No.	57 (cont)	
LM End	6.09	Issue Type +	Ma	Location *		
Category	Supplemental			GPS Latitude/Longitude		
				Start		End
Item	DRAFT DWR UCIP LMA Responsibility			39.733297 °		39.733297 °
				-121.930411 °		-121.930411 °
DWR ID	19248					
Comment Code						
Inspector Comment						
DS_ID:19248 FS_ID:41376 EP_NO: N/A Repair Type: Non-Urgent Crossing Status: Found UCIP Comments: Needs cleaning and clearing of debris. FIELD_STRUCT_DESC: [Channel Slough Drainage Structure] 1 of 2: 42-inch corrugated metal gravity drainage pipe through the levee, 16 feet below the crown. Flap gate on the waterside (WS) end. Slide gate in a corrugated metal pipe (CMP) riser on the WS slope. Concrete U-shaped headwall on each end. Grouted riprap apron and rock revetment on the landside (LS) end. [Additional Reference(s): DWR Levee Log, 1992. USACE Sacramento O&M Manual 504, May 1965, (HLM 6.30)]. FS Date: 2/25/2014						

Photo 3 of 3 : UCIP_FA_2019_41376_56918.jpg



LS view: U type concrete headwall and CMPs on levee slope. Soil/mud on inlet box.

LM Start	6.09	Rating **	M	Issue No.	58
LM End	6.09	Issue Type +	Ma	Location *	
Category	Supplemental			GPS Latitude/Longitude	
				Start	End
Item	DRAFT DWR UCIP LMA Responsibility			39.733280 °	39.733280 °
				-121.930409 °	-121.930409 °
DWR ID	19259				
Comment Code					
Inspector Comment					
DS_ID:19259 FS_ID:41377 EP_NO: N/A Repair Type: Non-Urgent Crossing Status: Found UCIP Comments: Needs cleaning and clearing of debris. FIELD_STRUCT_DESC: [Channel Slough Drainage Structure] 2 of 2: 42-inch corrugated metal gravity drainage pipe through the levee, 16 feet below the crown. Flap gate on the waterside (WS) end. Slide gate in a corrugated metal pipe (CMP) riser on the WS slope. Concrete U-shaped headwall on each end. Grouted riprap apron and rock revetment on the landside (LS) end. [Additional Reference(s): DWR Levee Log, 1992. USACE Sacramento O&M Manual 504, May 1965, (HLM 6.30)]. FS Date: 2/25/2014					

Photo 1 of 3 : UCIP_FA_2019_41377_56923.jpg



WS view: slide gates in CMP risers on levee slope.

* Location LS : Land Side N/A : Not Applicable WS : Water Side CR : Crown	** Rating A : Acceptable M : Minimally Acceptable U : Unacceptable	N : Not Inspected/Rated C : Corrected A/W : Acceptable but Monitor & Maintain	+ Issue Type Ma : Maintenance Deficiency Ob : Design & System Obsolescence En : Enforcement
--	--	---	---

**Flood Control Project Maintenance
Levee Inspections**

Maintenance Issue Types Only, Levee Inspection Report By Mile - Fall 2019

Butte County Department of Public Works

Waterway	Bank	Unit Miles	Inspection Start/End	Inspector
Unit No. 02 Mud Creek	Left	7.96	10/21/2019 10/21/2019	Makar Sokol

LM Start	6.09	Rating **	M	Issue No.	58 (cont)	
LM End	6.09	Issue Type +	Ma	Location *		
Category	Supplemental			GPS Latitude/Longitude		
				Start		End
Item	DRAFT DWR UCIP LMA Responsibility			39.733280 °		39.733280 °
				-121.930409 °		-121.930409 °
DWR ID	19259					
Comment Code						
Inspector Comment						
DS_ID:19259 FS_ID:41377 EP_NO: N/A Repair Type: Non-Urgent Crossing Status: Found UCIP Comments: Needs cleaning and clearing of debris. FIELD_STRUCT_DESC: [Channel Slough Drainage Structure] 2 of 2: 42-inch corrugated metal gravity drainage pipe through the levee, 16 feet below the crown. Flap gate on the waterside (WS) end. Slide gate in a corrugated metal pipe (CMP) riser on the WS slope. Concrete U-shaped headwall on each end. Grouted riprap apron and rock revetment on the landside (LS) end. [Additional Reference(s): DWR Levee Log, 1992. USACE Sacramento O&M Manual 504, May 1965, (HLM 6.30)]. FS Date: 2/25/2014						

LM Start	6.09	Rating **	M	Issue No.	58 (cont)
LM End	6.09	Issue Type +	Ma	Location *	

Photo 2 of 3 : UCIP_FA_2019_41377_56922.jpg



LS view: U type concrete headwall and CMPs on levee slope. Vegetation on inlet box.

Photo 3 of 3 : UCIP_FA_2019_41377_56921.jpg



LS view: U type concrete headwall and CMPs on levee slope. Soil/mud on inlet box.

* Location LS : Land Side N/A : Not Applicable WS : Water Side CR : Crown	** Rating A : Acceptable M : Minimally Acceptable U : Unacceptable	N : Not Inspected/Rated C : Corrected A/W : Acceptable but Monitor & Maintain	+ Issue Type Ma : Maintenance Deficiency Ob : Design & System Obsolescence En : Enforcement
--	--	---	---

**Flood Control Project Maintenance
Levee Inspections**

Maintenance Issue Types Only, Levee Inspection Report By Mile - Fall 2019

Butte County Department of Public Works

Waterway	Bank	Unit Miles	Inspection Start/End	Inspector
Unit No. 02 Mud Creek	Left	7.96	10/21/2019 10/21/2019	Makar Sokol

LM Start	6.15	Rating **	M	Issue No.	59	
LM End	6.15	Issue Type +	Ma	Location *		
Category	Supplemental			GPS Latitude/Longitude		
				Start	End	
Item	DRAFT DWR UCIP LMA Responsibility			39.732515 °	39.732515 °	
				-121.930373 °	-121.930373 °	
DWR ID	19249					
Comment Code						
Inspector Comment						
DS_ID:19249 FS_ID:31034 EP_NO: N/A Repair Type: Non-Urgent Crossing Status: Found UCIP Comments: Needs cleaning and clearing of debris. FIELD_STRUCT_DESC: 24-inch corrugated metal gravity drainage pipe through the levee, 12 feet below the crown. Flap gate on the waterside (WS) end. Concrete U-shaped headwall on each end. Grouted riprap apron on the landside (LS) end. Grouted riprap spillway on the WS end. [Additional Reference(s): DWR Levee Log, 1992. USACE Sacramento O&M Manual 504, May 1965, (HLM 6.35)]. FS Date: 2/25/2014						

LM Start	6.15	Rating **	M	Issue No.	59 (cont)
LM End	6.15	Issue Type +	Ma	Location *	

Photo 1 of 3 : UCIP_FA_2019_31034_56926.jpg



WS view: U type concrete headwall, pipe, and flapgate on levee slope.

Photo 2 of 3 : UCIP_FA_2019_31034_56925.jpg



LS view: U type concrete headwall and CMP on levee slope.

* Location LS : Land Side N/A : Not Applicable WS : Water Side CR : Crown	** Rating A : Acceptable M : Minimally Acceptable U : Unacceptable	N : Not Inspected/Rated C : Corrected A/W : Acceptable but Monitor & Maintain	+ Issue Type Ma : Maintenance Deficiency Ob : Design & System Obsolescence En : Enforcement
--	--	---	---

**Flood Control Project Maintenance
Levee Inspections**

Maintenance Issue Types Only, Levee Inspection Report By Mile - Fall 2019

Butte County Department of Public Works

Waterway	Bank	Unit Miles	Inspection Start/End	Inspector
Unit No. 02 Mud Creek	Left	7.96	10/21/2019 10/21/2019	Makar Sokol

LM Start	6.15	Rating **	M	Issue No.	59 (cont)	
LM End	6.15	Issue Type +	Ma	Location *		
Category	Supplemental			GPS Latitude/Longitude		
				Start	End	
Item	DRAFT DWR UCIP LMA Responsibility			39.732515 °	39.732515 °	
				-121.930373 °	-121.930373 °	
DWR ID	19249					
Comment Code						
Inspector Comment						
DS_ID:19249 FS_ID:31034 EP_NO: N/A Repair Type: Non-Urgent Crossing Status: Found UCIP Comments: Needs cleaning and clearing of debris. FIELD_STRUCT_DESC: 24-inch corrugated metal gravity drainage pipe through the levee, 12 feet below the crown. Flap gate on the waterside (WS) end. Concrete U-shaped headwall on each end. Grouted riprap apron on the landside (LS) end. Grouted riprap spillway on the WS end. [Additional Reference(s): DWR Levee Log, 1992. USACE Sacramento O&M Manual 504, May 1965, (HLM 6.35)]. FS Date: 2/25/2014						

Photo 3 of 3 : UCIP_FA_2019_31034_56924.jpg



LS view: inside view of CMP on levee slope. Needs cleaning and clearing.

LM Start	6.43	Rating **	M	Issue No.	60	
LM End	6.43	Issue Type +	Ma	Location *		
Category	Supplemental			GPS Latitude/Longitude		
				Start		End
Item	DRAFT DWR UCIP LMA Responsibility			39.728812 °		39.728812 °
				-121.932623 °		-121.932623 °
DWR ID	19251					
Comment Code						
Inspector Comment						
DS_ID:19251 FS_ID:31085 EP_NO: N/A Repair Type: Non-Urgent Crossing Status: Found UCIP Comments: Needs cleaning and clearing of debris. FIELD_STRUCT_DESC: 24-inch corrugated metal gravity drainage pipe through the levee, 15.5 feet below the crown. Flap gate on the waterside (WS) end. Concrete U-shaped headwall on each end. Grouted riprap apron on the landside (LS) end. Grouted riprap spillway on the WS end. [Additional Reference(s): DWR Levee Log, 1992. USACE Sacramento O&M Manual 504, May 1965, (HLM 6.65)]. FS Date: 2/25/2014						

Photo 1 of 3 : UCIP_FA_2019_31085_56988.jpg



WS view: U type concrete headwall, pipe, and flapgate on levee slope. Soil/mud on outlet box.

* Location LS : Land Side N/A : Not Applicable WS : Water Side CR : Crown	** Rating A : Acceptable M : Minimally Acceptable U : Unacceptable	N : Not Inspected/Rated C : Corrected A/W : Acceptable but Monitor & Maintain	+ Issue Type Ma : Maintenance Deficiency Ob : Design & System Obsolescence En : Enforcement
--	--	---	---

**Flood Control Project Maintenance
Levee Inspections**

Maintenance Issue Types Only, Levee Inspection Report By Mile - Fall 2019

Butte County Department of Public Works

Waterway	Bank	Unit Miles	Inspection Start/End	Inspector
Unit No. 02 Mud Creek	Left	7.96	10/21/2019 10/21/2019	Makar Sokol

LM Start	6.43	Rating **	M	Issue No.	60 (cont)	
LM End	6.43	Issue Type +	Ma	Location *		
Category	Supplemental			GPS Latitude/Longitude		
				Start		End
Item	DRAFT DWR UCIP LMA Responsibility			39.728812 °		39.728812 °
				-121.932623 °		-121.932623 °
DWR ID	19251					
Comment Code						
Inspector Comment						
DS_ID:19251 FS_ID:31085 EP_NO: N/A Repair Type: Non-Urgent Crossing Status: Found UCIP Comments: Needs cleaning and clearing of debris. FIELD_STRUCT_DESC: 24-inch corrugated metal gravity drainage pipe through the levee, 15.5 feet below the crown. Flap gate on the waterside (WS) end. Concrete U-shaped headwall on each end. Grouted riprap apron on the landside (LS) end. Grouted riprap spillway on the WS end. [Additional Reference(s): DWR Levee Log, 1992. USACE Sacramento O&M Manual 504, May 1965, (HLM 6.65)]. FS Date: 2/25/2014						

LM Start	6.43	Rating **	M	Issue No.	60 (cont)
LM End	6.43	Issue Type +	Ma	Location *	

Photo 2 of 3 : UCIP_FA_2019_31085_56987.jpg



LS view: U type concrete headwall and CMP on levee slope. Soil/mud on inlet box.

Photo 3 of 3 : UCIP_FA_2019_31085_56986.jpg



LS view: inside view of CMP on levee slope. Needs cleaning and clearing.

* Location LS : Land Side N/A : Not Applicable WS : Water Side CR : Crown	** Rating A : Acceptable M : Minimally Acceptable U : Unacceptable	N : Not Inspected/Rated C : Corrected A/W : Acceptable but Monitor & Maintain	+ Issue Type Ma : Maintenance Deficiency Ob : Design & System Obsolescence En : Enforcement
--	--	---	---

**Flood Control Project Maintenance
Levee Inspections**

Maintenance Issue Types Only, Levee Inspection Report By Mile - Fall 2019

Butte County Department of Public Works

Waterway	Bank	Unit Miles	Inspection Start/End	Inspector
Unit No. 02 Mud Creek	Left	7.96	10/21/2019 10/21/2019	Makar Sokol

LM Start	6.72	Rating **	C	Issue No.	45							
LM End	6.72	Issue Type +	Ma	Location *	LS							
Category	Earthen Levee		GPS Latitude/Longitude									
			Start	End								
Item	Animal Control		39.725540 °	39.725540 °								
			-121.935924 °	-121.935924 °								
DWR ID	DWR_NA0003_02_s_2019_45											
Comment Code												
A3 : No rodents visible, but rodent burrows visible; need to backfill and compact or grout burrows.												
Inspector Comment												

No Photos

LM Start	6.94	Rating **	M	Issue No.	61							
LM End	6.94	Issue Type +	Ma	Location *								
Category	Supplemental		GPS Latitude/Longitude									
			Start	End								
Item	DRAFT DWR UCIP LMA Responsibility		39.722798 °	39.722798 °								
			-121.937828 °	-121.937828 °								
DWR ID	19252											
Comment Code												
Inspector Comment												
DS_ID:19252 FS_ID:31103 EP_NO: N/A Repair Type: Non-Urgent Crossing Status: Found UCIP Comments: Needs cleaning and clearing of debris. FIELD_STRUCT_DESC: 24-inch corrugated metal gravity drainage pipe through the levee, 15 feet below the crown. Flap gate on the waterside (WS) end. Concrete U-shaped headwall on each end. Grouted riprap apron on the landside (LS) end. Grouted riprap spillway on the WS end. [Additional Reference(s): DWR Levee Log, 1992. USACE Sacramento O&M Manual 504, May 1965, (HLM 7.17)]. FS Date: 2/25/2014												

Photo 1 of 3 : UCIP_FA_2019_31103_57002.jpg



WS view: U type concrete headwall, pipe, and flapgate on levee slope.
Soil/mud on outlet box. Vegetation debris blocking outlet box

* Location	** Rating	+ Issue Type
LS : Land Side N/A : Not Applicable WS : Water Side CR : Crown	A : Acceptable M : Minimally Acceptable U : Unacceptable N : Not Inspected/Rated C : Corrected A/W : Acceptable but Monitor & Maintain	Ma : Maintenance Deficiency Ob : Design & System Obsolescence En : Enforcement

**Flood Control Project Maintenance
Levee Inspections**

Maintenance Issue Types Only, Levee Inspection Report By Mile - Fall 2019

Butte County Department of Public Works

Waterway	Bank	Unit Miles	Inspection Start/End	Inspector
Unit No. 02 Mud Creek	Left	7.96	10/21/2019 10/21/2019	Makar Sokol

LM Start	6.94	Rating **	M	Issue No.	61 (cont)	
LM End	6.94	Issue Type +	Ma	Location *		
Category	Supplemental			GPS Latitude/Longitude		
				Start	End	
Item	DRAFT DWR UCIP LMA Responsibility			39.722798 °	39.722798 °	
				-121.937828 °	-121.937828 °	
DWR ID	19252					
Comment Code						
Inspector Comment						
DS_ID:19252 FS_ID:31103 EP_NO: N/A Repair Type: Non-Urgent Crossing Status: Found UCIP Comments: Needs cleaning and clearing of debris. FIELD_STRUCT_DESC: 24-inch corrugated metal gravity drainage pipe through the levee, 15 feet below the crown. Flap gate on the waterside (WS) end. Concrete U-shaped headwall on each end. Grouted riprap apron on the landside (LS) end. Grouted riprap spillway on the WS end. [Additional Reference(s): DWR Levee Log, 1992. USACE Sacramento O&M Manual 504, May 1965, (HLM 7.17)]. FS Date: 2/25/2014						

LM Start	6.94	Rating **	M	Issue No.	61 (cont)
LM End	6.94	Issue Type +	Ma	Location *	

Photo 2 of 3 : UCIP_FA_2019_31103_57001.jpg



LS view: U type concrete headwall and CMP on levee slope. Soil/mud on inlet box.

Photo 3 of 3 : UCIP_FA_2019_31103_57000.jpg



LS view: inside view of CMP on levee slope. Needs cleaning and clearing.

* Location LS : Land Side N/A : Not Applicable WS : Water Side CR : Crown	** Rating A : Acceptable M : Minimally Acceptable U : Unacceptable	N : Not Inspected/Rated C : Corrected A/W : Acceptable but Monitor & Maintain	+ Issue Type Ma : Maintenance Deficiency Ob : Design & System Obsolescence En : Enforcement
--	--	---	---

**Flood Control Project Maintenance
Levee Inspections**

Maintenance Issue Types Only, Levee Inspection Report By Mile - Fall 2019

Butte County Department of Public Works

Waterway	Bank	Unit Miles	Inspection Start/End	Inspector
Unit No. 02 Mud Creek	Left	7.96	10/21/2019 10/21/2019	Makar Sokol

LM Start	7.22	Rating **	M	Issue No.	62	
LM End	7.22	Issue Type +	Ma	Location *		
Category	Supplemental			GPS Latitude/Longitude		
				Start		End
Item	DRAFT DWR UCIP LMA Responsibility			39.718882 °		39.718882 °
				-121.937602 °		-121.937602 °
DWR ID	19253					
Comment Code						
Inspector Comment						
DS_ID:19253 FS_ID:32085 EP_NO: N/A Repair Type: Non-Urgent Crossing Status: Found UCIP Comments: Slide gates in CMP risers on waterside shoulder.Needs cleaning and clearing of debris. FIELD_STRUCT_DESC: 1 of 3: 48-inch corrugated metal gravity drainage pipe through the levee, 18 feet below the crown. Flap gate on the waterside (WS) end. Slide gate in a corrugated metal pipe (CMP) riser on the WS shoulder. Concrete U-shaped headwall on each end. Grouted riprap apron on the landside (LS) end. Grouted riprap spillway on the WS end. [Additional Reference(s): DWR Levee Log, 1992. USACE Sacramento O&M Manual 504, May 1965, (HLM 7.46)]. FS Date: 2/25/2014						

LM Start	7.22	Rating **	M	Issue No.	62 (cont)
LM End	7.22	Issue Type +	Ma	Location *	

Photo 1 of 3 : UCIP_FA_2019_32085_58585.jpg



WS view: slide gates in CMP risers on waterside shoulder.

Photo 2 of 3 : UCIP_FA_2019_32085_58584.jpg



WS view: U type concrete headwall, pipes, and flapgates on levee slope. Soil/mud on outlet box. Vegetation debris blocking outlet box

* Location LS : Land Side N/A : Not Applicable WS : Water Side CR : Crown	** Rating A : Acceptable M : Minimally Acceptable U : Unacceptable	N : Not Inspected/Rated C : Corrected A/W : Acceptable but Monitor & Maintain	+ Issue Type Ma : Maintenance Deficiency Ob : Design & System Obsolescence En : Enforcement
--	--	---	---

**Flood Control Project Maintenance
Levee Inspections**

Maintenance Issue Types Only, Levee Inspection Report By Mile - Fall 2019

Butte County Department of Public Works

Waterway	Bank	Unit Miles	Inspection Start/End	Inspector
Unit No. 02 Mud Creek	Left	7.96	10/21/2019 10/21/2019	Makar Sokol

LM Start	7.22	Rating **	M	Issue No.	62 (cont)	
LM End	7.22	Issue Type +	Ma	Location *		
Category	Supplemental			GPS Latitude/Longitude		
				Start		End
Item	DRAFT DWR UCIP LMA Responsibility			39.718882 °		39.718882 °
				-121.937602 °		-121.937602 °
DWR ID	19253					
Comment Code						
Inspector Comment						
DS_ID:19253 FS_ID:32085 EP_NO: N/A Repair Type: Non-Urgent Crossing Status: Found UCIP Comments: Slide gates in CMP risers on waterside shoulder.Needs cleaning and clearing of debris. FIELD_STRUCT_DESC: 1 of 3: 48-inch corrugated metal gravity drainage pipe through the levee, 18 feet below the crown. Flap gate on the waterside (WS) end. Slide gate in a corrugated metal pipe (CMP) riser on the WS shoulder. Concrete U-shaped headwall on each end. Grouted riprap apron on the landside (LS) end. Grouted riprap spillway on the WS end. [Additional Reference(s): DWR Levee Log, 1992. USACE Sacramento O&M Manual 504, May 1965, (HLM 7.46)]. FS Date: 2/25/2014						

Photo 3 of 3 : UCIP_FA_2019_32085_58586.jpg



LS view: U type concrete headwall and CMPs on levee slope. Soil/mud on inlet box.

LM Start	7.23	Rating **	M	Issue No.	63
LM End	7.23	Issue Type +	Ma	Location *	
Category	Supplemental			GPS Latitude/Longitude	
				Start	End
Item	DRAFT DWR UCIP LMA Responsibility			39.718849 °	39.718849 °
				-121.937580 °	-121.937580 °
DWR ID	19261				
Comment Code					
Inspector Comment					
DS_ID:19261 FS_ID:32087 EP_NO: N/A Repair Type: Non-Urgent Crossing Status: Found UCIP Comments: Slide gates in CMP risers on waterside shoulder.Needs cleaning and clearing on both pipe ends. FIELD_STRUCT_DESC: 3 of 3: 48-inch corrugated metal gravity drainage pipe through the levee, 18 feet below the crown. Flap gate on the waterside (WS) end. Slide gate in a corrugated metal pipe (CMP) riser on the WS shoulder. Concrete U-shaped headwall on each end. Grouted riprap apron on the landside (LS) end. Grouted riprap spillway on the WS end. [Additional Reference(s): DWR Levee Log, 1992. USACE Sacramento O&M Manual 504, May 1965, (HLM 7.46)]. FS Date: 2/25/2014					

Photo 1 of 3 : UCIP_FA_2019_32087_58592.jpg



WS view: slide gates in CMP risers on waterside shoulder.

* Location LS : Land Side N/A : Not Applicable WS : Water Side CR : Crown	** Rating A : Acceptable M : Minimally Acceptable U : Unacceptable	N : Not Inspected/Rated C : Corrected A/W : Acceptable but Monitor & Maintain	+ Issue Type Ma : Maintenance Deficiency Ob : Design & System Obsolescence En : Enforcement
--	--	---	---

**Flood Control Project Maintenance
Levee Inspections**

Maintenance Issue Types Only, Levee Inspection Report By Mile - Fall 2019

Butte County Department of Public Works

Waterway	Bank	Unit Miles	Inspection Start/End	Inspector
Unit No. 02 Mud Creek	Left	7.96	10/21/2019 10/21/2019	Makar Sokol

LM Start	7.23	Rating **	M	Issue No.	63 (cont)	
LM End	7.23	Issue Type +	Ma	Location *		
Category	Supplemental			GPS Latitude/Longitude		
				Start		End
Item	DRAFT DWR UCIP LMA Responsibility			39.718849 °		39.718849 °
				-121.937580 °		-121.937580 °
DWR ID	19261					
Comment Code						
Inspector Comment						
DS_ID:19261 FS_ID:32087 EP_NO: N/A Repair Type: Non-Urgent Crossing Status: Found UCIP Comments: Slide gates in CMP risers on waterside shoulder. Needs cleaning and clearing on both pipe ends. FIELD_STRUCT_DESC: 3 of 3: 48-inch corrugated metal gravity drainage pipe through the levee, 18 feet below the crown. Flap gate on the waterside (WS) end. Slide gate in a corrugated metal pipe (CMP) riser on the WS shoulder. Concrete U-shaped headwall on each end. Grouted riprap apron on the landside (LS) end. Grouted riprap spillway on the WS end. [Additional Reference(s): DWR Levee Log, 1992. USACE Sacramento O&M Manual 504, May 1965, (HLM 7.46)]. FS Date: 2/25/2014						

LM Start	7.23	Rating **	M	Issue No.	63 (cont)
LM End	7.23	Issue Type +	Ma	Location *	

Photo 2 of 3 : UCIP_FA_2019_32087_58591.jpg



WS view: U type concrete headwall, pipes, and flapgates on levee slope. Soil/mud on outlet box. Vegetation debris on outlet box

Photo 3 of 3 : UCIP_FA_2019_32087_58590.jpg



LS view: U type concrete headwall and CMPs on levee slope. Soil/mud on inlet box.

* Location LS : Land Side N/A : Not Applicable WS : Water Side CR : Crown	** Rating A : Acceptable M : Minimally Acceptable U : Unacceptable	N : Not Inspected/Rated C : Corrected A/W : Acceptable but Monitor & Maintain	+ Issue Type Ma : Maintenance Deficiency Ob : Design & System Obsolescence En : Enforcement
--	--	---	---

**Flood Control Project Maintenance
Levee Inspections**

Maintenance Issue Types Only, Levee Inspection Report By Mile - Fall 2019

Butte County Department of Public Works

Waterway	Bank	Unit Miles	Inspection Start/End	Inspector
Unit No. 02 Mud Creek	Left	7.96	10/21/2019 10/21/2019	Makar Sokol

LM Start	7.23	Rating **	M	Issue No.	64	
LM End	7.23	Issue Type +	Ma	Location *		
Category	Supplemental			GPS Latitude/Longitude		
				Start		End
Item	DRAFT DWR UCIP LMA Responsibility			39.718862 °		39.718862 °
				-121.937594 °		-121.937594 °
DWR ID	19260					
Comment Code						
Inspector Comment						
DS_ID:19260 FS_ID:32086 EP_NO: N/A Repair Type: Non-Urgent Crossing Status: Found UCIP Comments: Slide gates in CMP risers on waterside shoulder.Needs cleaning and clearing of debris. FIELD_STRUCT_DESC: 2 of 3: 48-inch corrugated metal gravity drainage pipe through the levee, 18 feet below the crown. Flap gate on the waterside (WS) end. Slide gate in a corrugated metal pipe (CMP) riser on the WS shoulder. Concrete U-shaped headwall on each end. Grouted riprap apron on the landside (LS) end. Grouted riprap spillway on the WS end. [Additional Reference(s): DWR Levee Log, 1992. USACE Sacramento O&M Manual 504, May 1965, (HLM 7.46)]. FS Date: 2/25/2014						

LM Start	7.23	Rating **	M	Issue No.	64 (cont)
LM End	7.23	Issue Type +	Ma	Location *	

Photo 1 of 3 : UCIP_FA_2019_32086_58589.jpg



WS view: slide gates in CMP risers on waterside shoulder.

Photo 2 of 3 : UCIP_FA_2019_32086_58588.jpg



WS view: U type concrete headwall, pipes, and flapgates on levee slope. Soil/mud on outlet box. Vegetation debris on outlet box

* Location LS : Land Side N/A : Not Applicable WS : Water Side CR : Crown	** Rating A : Acceptable M : Minimally Acceptable U : Unacceptable	N : Not Inspected/Rated C : Corrected A/W : Acceptable but Monitor & Maintain	+ Issue Type Ma : Maintenance Deficiency Ob : Design & System Obsolescence En : Enforcement
--	--	---	---

**Flood Control Project Maintenance
Levee Inspections**

Maintenance Issue Types Only, Levee Inspection Report By Mile - Fall 2019

Butte County Department of Public Works

Waterway	Bank	Unit Miles	Inspection Start/End	Inspector
Unit No. 02 Mud Creek	Left	7.96	10/21/2019 10/21/2019	Makar Sokol

LM Start	7.23	Rating **	M	Issue No.	64 (cont)	
LM End	7.23	Issue Type +	Ma	Location *		
Category	Supplemental			GPS Latitude/Longitude		
				Start		End
Item	DRAFT DWR UCIP LMA Responsibility			39.718862 °		39.718862 °
				-121.937594 °		-121.937594 °
DWR ID	19260					
Comment Code						
Inspector Comment						
DS_ID:19260 FS_ID:32086 EP_NO: N/A Repair Type: Non-Urgent Crossing Status: Found UCIP Comments: Slide gates in CMP risers on waterside shoulder.Needs cleaning and clearing of debris. FIELD_STRUCT_DESC: 2 of 3: 48-inch corrugated metal gravity drainage pipe through the levee, 18 feet below the crown. Flap gate on the waterside (WS) end. Slide gate in a corrugated metal pipe (CMP) riser on the WS shoulder. Concrete U-shaped headwall on each end. Grouted riprap apron on the landside (LS) end. Grouted riprap spillway on the WS end. [Additional Reference(s): DWR Levee Log, 1992. USACE Sacramento O&M Manual 504, May 1965, (HLM 7.46)]. FS Date: 2/25/2014						

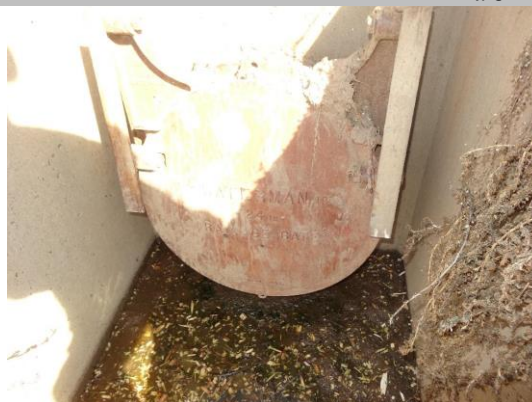
Photo 3 of 3 : UCIP_FA_2019_32086_58587.jpg



LS view: U type concrete headwall and CMPs on levee slope. Soil/mud on inlet box.

LM Start	7.77	Rating **	M	Issue No.	65	
LM End	7.77	Issue Type +	Ma	Location *		
Category	Supplemental			GPS Latitude/Longitude		
				Start		End
Item	DRAFT DWR UCIP LMA Responsibility			39.711436 °		39.711436 °
				-121.937135 °		-121.937135 °
DWR ID	19254					
Comment Code						
Inspector Comment						
DS_ID:19254 FS_ID:31129 EP_NO: N/A Repair Type: Non-Urgent Crossing Status: Found UCIP Comments: Debris in inlet pipe, needs cleaning and clearing. FIELD_STRUCT_DESC: 24-inch corrugated metal gravity drainage pipe through the levee, 18 feet below the crown. Flap gate on the waterside (WS) end. Concrete U-shaped headwall on each end. Grouted riprap apron on the landside (LS) end. Grouted riprap spillway on the WS end. [Additional Reference(s): DWR Levee Log, 1992. USACE Sacramento O&M Manual 504, May 1965, (HLM 8.09)]. FS Date: 2/25/2014						

Photo 1 of 2 : UCIP_FA_2019_31129_57036.jpg



WS view: U type concrete headwall, pipe, and flapgate on levee slope. Soil/mud on outlet box.

* Location LS : Land Side N/A : Not Applicable WS : Water Side CR : Crown	** Rating A : Acceptable M : Minimally Acceptable U : Unacceptable	N : Not Inspected/Rated C : Corrected A/W : Acceptable but Monitor & Maintain	+ Issue Type Ma : Maintenance Deficiency Ob : Design & System Obsolescence En : Enforcement
--	--	---	---

**Flood Control Project Maintenance
Levee Inspections**

Maintenance Issue Types Only, Levee Inspection Report By Mile - Fall 2019

Butte County Department of Public Works

Waterway	Bank	Unit Miles	Inspection Start/End	Inspector
Unit No. 02 Mud Creek	Left	7.96	10/21/2019 10/21/2019	Makar Sokol

LM Start	7.77	Rating **	M	Issue No.	65 (cont)	
LM End	7.77	Issue Type +	Ma	Location *		
Category	Supplemental			GPS Latitude/Longitude		
				Start	End	
Item	DRAFT DWR UCIP LMA Responsibility			39.711436 °	39.711436 °	
				-121.937135 °	-121.937135 °	
DWR ID	19254					
Comment Code						
Inspector Comment						
DS_ID:19254						
FS_ID:31129						
EP_NO: N/A						
Repair Type: Non-Urgent						
Crossing Status: Found						
UCIP Comments: Debris in inlet pipe, needs cleaning and clearing.						
FIELD_STRUCT_DESC: 24-inch corrugated metal gravity drainage pipe						
through the levee, 18 feet below the crown. Flap gate on the waterside						
(WS) end. Concrete U-shaped headwall on each end. Grouted riprap						
apron on the landside (LS) end. Grouted riprap spillway on the WS end.						
[Additional Reference(s): DWR Levee Log, 1992. USACE Sacramento						
O&M Manual 504, May 1965, (HLM 8.09)].						
FS Date: 2/25/2014						

Photo 2 of 2 : UCIP_FA_2019_31129_57035.jpg



LS view: U type concrete headwall and CMP on levee slope. Soil/mud and vegetation on inlet box.

* Location LS : Land Side N/A : Not Applicable WS : Water Side CR : Crown	** Rating A : Acceptable M : Minimally Acceptable U : Unacceptable	N : Not Inspected/Rated C : Corrected A/W : Acceptable but Monitor & Maintain	+ Issue Type Ma : Maintenance Deficiency Ob : Design & System Obsolescence En : Enforcement
--	--	---	---

**Flood Control Project Maintenance
Levee Inspections**

Maintenance Issue Types Only, Levee Inspection Report By Mile - Fall 2019

Butte County Department of Public Works

Waterway	Bank	Unit Miles	Inspection Start/End	Inspector
Unit No. 02A Channel Slough	Left	0.26	10/22/2019 10/22/2019	Makar Sokol

LM Start	0.08	Rating **	M	Issue No.	2
LM End	0.08	Issue Type +	Ma	Location *	CR
Category	Earthen Levee			GPS Latitude/Longitude	
				Start	End
Item	Trim / Thin Trees			39.733999 °	39.733999 °
				-121.929637 °	-121.929637 °
DWR ID	DWR_NA0003_02A_f _ 2019_2				
Comment Code					
T4 : Trim trees over roadway to at least 12 feet above ground level.					
Inspector Comment					

No Photos

LM Start	0.21	Rating **	M	Issue No.	1
LM End	0.21	Issue Type +	Ma	Location *	WS
Category	Earthen Levee			GPS Latitude/Longitude	
				Start	End
Item	Slope Stability			39.735806 °	39.735806 °
				-121.928774 °	-121.928774 °
DWR ID	DWR_NA0003_02A_f _ 2019_1				
Comment Code					
S3 : Repair the levee slope damaged by vehicle traffic and prevent access where possible.					
Inspector Comment					

Photo 1 of 1 : FA_2019_NA0003_66_1_20191025_00001.jpg



View of depressions on the waterside slope. Fall 2019.

* Location LS : Land Side N/A : Not Applicable WS : Water Side CR : Crown	** Rating A : Acceptable M : Minimally Acceptable U : Unacceptable	N : Not Inspected/Rated C : Corrected A/W : Acceptable but Monitor & Maintain	+ Issue Type Ma : Maintenance Deficiency Ob : Design & System Obsolescence En : Enforcement
--	--	---	---

Butte County Department of Public Works

View of the erosion caused by motorcycles on the landside slope.

Page 1 of 20

Butte County Department of Public Works

**Flood Control Project Maintenance
Levee Inspections**

Maintenance Issue Types Only, Levee Inspection Report By Mile - Fall 2019

Butte County Department of Public Works

Waterway	Bank	Unit Miles	Inspection Start/End	Inspector
Unit No. 03 Sycamore and Sheep Hollow Creeks	Right	4.05	10/21/2019 10/21/2019	Makar Sokol

LM Start	0.10	Rating **	A/W	Issue No.	29 (cont)	
LM End	0.10	Issue Type +	Ma	Location *		
Category	Supplemental			GPS Latitude/Longitude		
				Start	End	
Item	DRAFT DWR UCIP LMA Responsibility			39.786195°	39.786195°	
				-121.881325°	-121.881325°	
DWR ID	19262					
Comment Code						
Inspector Comment						
DS_ID:19262 FS_ID:51844 EP_NO: N/A Repair Type: No Action Needed Crossing Status: Found UCIP Comments: 05/16/2017 Crossing has been downgraded from Non-Urgent to No Action Needed. The flap gate appears to be in good working order based on the photos, and the small pile of debris not enough to warrant Non-Urgent rating. (K. Fazel - UCIP)03/11/2014:Slide gate in CMP riser on waterside.The culvert was working during field inspection. (P. Amatya - DWR) FIELD_STRUCT_DESC: 42-inch corrugated metal gravity drainage pipe through the levee, 14 feet below the crown. Flap gate on the waterside (WS) end. Slide gate in a corrugated metal pipe (CMP) riser on the WS slope. Concrete U-shaped headwall on each end. Grouted riprap apron on the landside (LS) end. Grouted riprap spillway on the WS end. [Additional Reference(s): DWR Levee Log, 1992. USACE Sacramento O&M Manual 504, May 1965, (HLM 0.09)]. FS Date: 3/11/2014						

Photo 3 of 3 : UCIP_FA_2019_51844_58600.jpg



WS view: slide gate in CMP riser on waterside shoulder.

LM Start	0.14	Rating **	M	Issue No.	27
LM End	0.14	Issue Type +	Ma	Location *	LS
Category	Earthen Levee			GPS Latitude/Longitude	
				Start	End
Item	Trim / Thin Trees			39.786368 °	39.786368 °
				-121.880602 °	-121.880602 °
DWR ID	DWR_NA0003_03_s_2019_27				
Comment Code					
T2 : Thin trees to allow visibility of the ground and room to flood fight.					
Inspector Comment					
Trees smaller than 4-inches in diameter at chest height should be removed.					

No Photos

* Location LS : Land Side N/A : Not Applicable WS : Water Side CR : Crown	** Rating A : Acceptable M : Minimally Acceptable U : Unacceptable	N : Not Inspected/Rated C : Corrected A/W : Acceptable but Monitor & Maintain	+ Issue Type Ma : Maintenance Deficiency Ob : Design & System Obsolescence En : Enforcement
--	--	---	---

**Flood Control Project Maintenance
Levee Inspections**

Maintenance Issue Types Only, Levee Inspection Report By Mile - Fall 2019

Butte County Department of Public Works

Waterway	Bank	Unit Miles	Inspection Start/End	Inspector
Unit No. 03 Sycamore and Sheep Hollow Creeks	Right	4.05	10/21/2019 10/21/2019	Makar Sokol

LM Start	0.35	Rating **	C	Issue No.	15
LM End	0.35	Issue Type +	Ma	Location *	LS
Category	Earthen Levee			GPS Latitude/Longitude	
				Start	End
Item	Trim / Thin Trees			39.785704 °	39.785704 °
				-121.877004 °	-121.877004 °
DWR ID	DWR_NA0003_03_f_2016_15				
Comment Code					
T1 : Trim trees to at least five feet above ground level.					
Inspector Comment					

No Photos

LM Start	0.39	Rating **	A/W	Issue No.	30	
LM End	0.39	Issue Type +	Ma	Location *		
Category	Supplemental			GPS Latitude/Longitude		
				Start		End
Item	DRAFT DWR UCIP LMA Responsibility			39.785262 °		39.785262 °
				-121.876622 °		-121.876622 °
DWR ID	19278					
Comment Code						
Inspector Comment						
DS_ID:19278						
FS_ID:32104						
EP_NO: N/A						
Repair Type: No Action Needed						
Crossing Status: Found						
UCIP Comments: Slide gate in CMP riser on waterside.The culvert was working during the field visit.						
FIELD_STRUCT_DESC: 1 of 3: 48-inch corrugated metal gravity drainage pipe through the levee, 11.7 feet below the crown. Slide gate in a riser well on the waterside (WS) slope. Concrete U-shaped headwall on each end. Flap gate on the WS end. Grouted riprap outlet channel on the WS. [Additional Reference(s): DWR Levee Log, 1992. USACE Sacramento O&M Manual 504, May 1965, (HLM 0.39)].						
FS Date: 3/11/2014						

Photo 1 of 2 : UCIP_FA_2019_32104_58606.jpg



WS view: U type concrete headwall and three CMPs with slide gates on levee slope. Grouted riprap spillway.

* Location LS : Land Side N/A : Not Applicable WS : Water Side CR : Crown	** Rating A : Acceptable M : Minimally Acceptable U : Unacceptable	N : Not Inspected/Rated C : Corrected A/W : Acceptable but Monitor & Maintain	+ Issue Type Ma : Maintenance Deficiency Ob : Design & System Obsolescence En : Enforcement
--	--	---	---

**Flood Control Project Maintenance
Levee Inspections**

Maintenance Issue Types Only, Levee Inspection Report By Mile - Fall 2019

Butte County Department of Public Works

Waterway	Bank	Unit Miles	Inspection Start/End	Inspector
Unit No. 03 Sycamore and Sheep Hollow Creeks	Right	4.05	10/21/2019 10/21/2019	Makar Sokol

LM Start	0.39	Rating **	A/W	Issue No.	30 (cont)	
LM End	0.39	Issue Type +	Ma	Location *		
Category	Supplemental			GPS Latitude/Longitude		
				Start	End	
Item	DRAFT DWR UCIP LMA Responsibility			39.785262 °	39.785262 °	
				-121.876622 °	-121.876622 °	
DWR ID	19278					
Comment Code						
Inspector Comment						
DS_ID:19278						
FS_ID:32104						
EP_NO: N/A						
Repair Type: No Action Needed						
Crossing Status: Found						
UCIP Comments: Slide gate in CMP riser on waterside.The culvert was working during the field visit.						
FIELD_STRUCT_DESC: 1 of 3: 48-inch corrugated metal gravity drainage pipe through the levee, 11.7 feet below the crown. Slide gate in a riser well on the waterside (WS) slope. Concrete U-shaped headwall on each end. Flap gate on the WS end. Grouted riprap outlet channel on the WS. [Additional Reference(s): DWR Levee Log, 1992. USACE Sacramento O&M Manual 504, May 1965, (HLM 0.39)].						
FS Date: 3/11/2014						

Photo 2 of 2 : UCIP_FA_2019_32104_58605.jpg



LS view: U type concrete headwall and three CMPs on levee slope. Soil/mud on inlet box.

LM Start	0.39	Rating **	A/W	Issue No.	31	
LM End	0.39	Issue Type +	Ma	Location *		
Category	Supplemental			GPS Latitude/Longitude		
				Start		End
Item	DRAFT DWR UCIP LMA Responsibility			39.785246 °		39.785246 °
				-121.876609 °		-121.876609 °
DWR ID	19277					
Comment Code						
Inspector Comment						
DS_ID:19277						
FS_ID:32105						
EP_NO: N/A						
Repair Type: No Action Needed						
Crossing Status: Found						
UCIP Comments: Slide gate in CMP riser on waterside.The culvert was working during the field visit.						
FIELD_STRUCT_DESC: 2 of 3: 48-inch corrugated metal gravity drainage pipe through the levee, 11.7 feet below the crown. Slide gate in a riser well on the waterside (WS) slope. Concrete U-shaped headwall on each end. Flap gate on the WS end. Grouted riprap outlet channel on the WS. [Additional Reference(s): DWR Levee Log, 1992. USACE Sacramento O&M Manual 504, May 1965, (HLM 0.39)].						
FS Date: 3/11/2014						

Photo 1 of 2 : UCIP_FA_2019_32105_58608.jpg



WS view: U type concrete headwall and three CMPs with slide gates on levee slope. Grouted riprap spillway.

* Location LS : Land Side N/A : Not Applicable WS : Water Side CR : Crown	** Rating A : Acceptable M : Minimally Acceptable U : Unacceptable	N : Not Inspected/Rated C : Corrected A/W : Acceptable but Monitor & Maintain	+ Issue Type Ma : Maintenance Deficiency Ob : Design & System Obsolescence En : Enforcement
--	--	---	---

Butte County Department of Public Works

* Location	** Rating	+ Issue Type
LS : Land Side	A : Acceptable	Ma : Maintenance Deficiency
N/A : Not Applicable	N : Not Inspected/Rated	Ob : Design & System Obsolescence
WS : Water Side	M : Minimally Acceptable	En : Enforcement
CR : Crown	U : Unacceptable	
	A/W : Acceptable but Monitor & Maintain	

**Flood Control Project Maintenance
Levee Inspections**

Maintenance Issue Types Only, Levee Inspection Report By Mile - Fall 2019

Butte County Department of Public Works

Waterway	Bank	Unit Miles	Inspection Start/End	Inspector
Unit No. 03 Sycamore and Sheep Hollow Creeks	Right	4.05	10/21/2019 10/21/2019	Makar Sokol

LM Start	0.39	Rating **	A/W	Issue No.	32 (cont)	
LM End	0.39	Issue Type +	Ma	Location *		
Category	Supplemental			GPS Latitude/Longitude		
				Start		End
Item	DRAFT DWR UCIP LMA Responsibility			39.785230 °		39.785230 °
				-121.876592 °		-121.876592 °
DWR ID	19263					
Comment Code						
Inspector Comment						
DS_ID:19263 FS_ID:32106 EP_NO: N/A Repair Type: No Action Needed Crossing Status: Found UCIP Comments: Slide gate in CMP riser on waterside.The culvert was working during the field visit. FIELD_STRUCT_DESC: 3 of 3: 48-inch corrugated metal gravity drainage pipe through the levee, 11.7 feet below the crown. Slide gate in a riser well on the waterside (WS) slope. Concrete U-shaped headwall on each end. Flap gate on the WS end. Grouted riprap outlet channel on the WS. [Additional Reference(s): DWR Levee Log, 1992. USACE Sacramento O&M Manual 504, May 1965, (HLM 0.39)]. FS Date: 3/11/2014						

Photo 2 of 2 : UCIP_FA_2019_32106_58609.jpg



LS view: U type concrete headwall and three CMPs on levee slope. Soil/mud on inlet box.

LM Start	1.25	Rating **	A/W	Issue No.	33	
LM End	1.25	Issue Type +	Ma	Location *		
Category	Supplemental			GPS Latitude/Longitude		
				Start	End	
Item	DRAFT DWR UCIP LMA Responsibility			39.779678 °	39.779678 °	
				-121.862632 °	-121.862632 °	
DWR ID	19264					
Comment Code						
Inspector Comment						
DS_ID:19264						
FS_ID:32107						
EP_NO: N/A						
Repair Type: No Action Needed						
Crossing Status: Found						
UCIP Comments: The culvert was working during the field visit.						
FIELD_STRUCT_DESC: 24-inch corrugated metal gravity drainage pipe						
through the levee, 11.7 feet below the crown. Flap gate on the						
waterside (WS) end. Concrete U-shaped headwall on each end.						
[Additional Reference(s): DWR Levee Log, 1992. USACE Sacramento						
O&M Manual 504, May 1965, (HLM 1.28)].						
FS Date: 3/11/2014						

Photo 1 of 3 : UCIP_FA_2019_32107_58613.jpg



WS view: U type concrete headwall and grouted riprap on levee slope.

* Location LS : Land Side N/A : Not Applicable WS : Water Side CR : Crown	** Rating A : Acceptable M : Minimally Acceptable U : Unacceptable	N : Not Inspected/Rated C : Corrected A/W : Acceptable but Monitor & Maintain	+ Issue Type Ma : Maintenance Deficiency Ob : Design & System Obsolescence En : Enforcement
--	--	---	---

**Flood Control Project Maintenance
Levee Inspections**

Maintenance Issue Types Only, Levee Inspection Report By Mile - Fall 2019

Butte County Department of Public Works

Waterway	Bank	Unit Miles	Inspection Start/End	Inspector
Unit No. 03 Sycamore and Sheep Hollow Creeks	Right	4.05	10/21/2019 10/21/2019	Makar Sokol

LM Start	1.25	Rating **	A/W	Issue No.	33 (cont)	
LM End	1.25	Issue Type +	Ma	Location *		
Category	Supplemental			GPS Latitude/Longitude		
				Start	End	
Item	DRAFT DWR UCIP LMA Responsibility			39.779678 °	39.779678 °	
				-121.862632 °	-121.862632 °	
DWR ID	19264					
Comment Code						
Inspector Comment						
DS_ID:19264						
FS_ID:32107						
EP_NO: N/A						
Repair Type: No Action Needed						
Crossing Status: Found						
UCIP Comments: The culvert was working during the field visit.						
FIELD_STRUCT_DESC: 24-inch corrugated metal gravity drainage pipe						
through the levee, 11.7 feet below the crown. Flap gate on the						
waterside (WS) end. Concrete U-shaped headwall on each end.						
[Additional Reference(s): DWR Levee Log, 1992. USACE Sacramento						
O&M Manual 504, May 1965, (HLM 1.28)].						
FS Date: 3/11/2014						

Photo 2 of 3 : UCIP_FA_2019_32107_58612.jpg



WS view: U type concrete headwall, flapgate, and CMP on levee slope.

LM Start	1.25	Rating **	A/W	Issue No.	33 (cont)
LM End	1.25	Issue Type +	Ma	Location *	

Photo 3 of 3 : UCIP_FA_2019_32107_58611.jpg



LS view: U type concrete headwall and CMP on levee slope.

* Location LS : Land Side N/A : Not Applicable WS : Water Side CR : Crown	** Rating A : Acceptable M : Minimally Acceptable U : Unacceptable	N : Not Inspected/Rated C : Corrected A/W : Acceptable but Monitor & Maintain	+ Issue Type Ma : Maintenance Deficiency Ob : Design & System Obsolescence En : Enforcement
--	--	---	---

**Flood Control Project Maintenance
Levee Inspections**

Maintenance Issue Types Only, Levee Inspection Report By Mile - Fall 2019

Butte County Department of Public Works

Waterway	Bank	Unit Miles	Inspection Start/End	Inspector
Unit No. 03 Sycamore and Sheep Hollow Creeks	Right	4.05	10/21/2019 10/21/2019	Makar Sokol

LM Start	1.50	Rating **	A/W	Issue No.	34
LM End	1.50	Issue Type +	Ma	Location *	
Category	Supplemental			GPS Latitude/Longitude	
				Start	End
Item	DRAFT DWR UCIP LMA Responsibility			39.779230 °	39.779230 °
				-121.857945 °	-121.857945 °
DWR ID	19265				
Comment Code					
Inspector Comment					
DS_ID:19265 FS_ID:31899 EP_NO: N/A Repair Type: No Action Needed Crossing Status: Found UCIP Comments: Working during the field visit. FIELD_STRUCT_DESC: 24-inch corrugated metal gravity drainage pipe through the levee, 11 feet below the crown. Flap gate on the waterside (WS) end. Concrete U-shaped headwall on each end. Grouted riprap apron on each end. [Additional Reference(s): DWR Levee Log, 1992. USACE Sacramento O&M Manual 504, May 1965, (HLM 1.53)]. FS Date: 3/11/2014					

Photo 1 of 2 : UCIP_FA_2019_31899_58187.jpg



WS view: U type concrete headwall, flapgate, and CMP on levee slope. Looks clean and clear.

LM Start	1.50	Rating **	A/W	Issue No.	34 (cont)
LM End	1.50	Issue Type +	Ma	Location *	

Photo 2 of 2 : UCIP_FA_2019_31899_58186.jpg



LS view: U type concrete headwall and CMP on levee slope. Looks clean and clear.

* Location LS : Land Side N/A : Not Applicable WS : Water Side CR : Crown	** Rating A : Acceptable M : Minimally Acceptable U : Unacceptable	N : Not Inspected/Rated C : Corrected A/W : Acceptable but Monitor & Maintain	+ Issue Type Ma : Maintenance Deficiency Ob : Design & System Obsolescence En : Enforcement
--	--	---	---

**Flood Control Project Maintenance
Levee Inspections**

Maintenance Issue Types Only, Levee Inspection Report By Mile - Fall 2019

Butte County Department of Public Works

Waterway	Bank	Unit Miles	Inspection Start/End	Inspector
Unit No. 03 Sycamore and Sheep Hollow Creeks	Right	4.05	10/21/2019 10/21/2019	Makar Sokol

LM Start	2.17	Rating **	M	Issue No.	36	
LM End	2.17	Issue Type +	Ma	Location *		
Category	Supplemental			GPS Latitude/Longitude		
				Start	End	
Item	DRAFT DWR UCIP LMA Responsibility			39.785290 °	39.785290 °	
				-121.844235 °	-121.844235 °	
DWR ID	19267					
Comment Code						
Inspector Comment						
DS_ID:19267 FS_ID:32124 EP_NO: N/A Repair Type: Non-Urgent Crossing Status: Found UCIP Comments: Pipe is about 4 feet below the crown. Needs cleaning and clearing the culvert. FIELD_STRUCT_DESC: 24-inch corrugated metal gravity drainage pipe through the levee, 6 feet below the crown. Flap gate on the waterside (WS) end. Concrete U-shaped headwall on each end. [Additional Reference(s): DWR Levee Log, 1992. USACE Sacramento O&M Manual 504, May 1965, (HLM 2.23)]. FS Date: 3/7/2014						

Photo 1 of 3 : UCIP_FA_2019_32124_58625.jpg



WS view: concrete headwall, pipe, and flapgate on levee slope.
Vegetation and mud on outlet box.

LM Start	2.17	Rating **	M	Issue No.	36 (cont)
LM End	2.17	Issue Type +	Ma	Location *	

Photo 2 of 3 : UCIP_FA_2019_32124_58624.jpg



LS view: U type concrete headwall of CMP culvert on levee slope.
Vegetation on inlet box.

* Location LS : Land Side N/A : Not Applicable WS : Water Side CR : Crown	** Rating A : Acceptable M : Minimally Acceptable U : Unacceptable	N : Not Inspected/Rated C : Corrected A/W : Acceptable but Monitor & Maintain	+ Issue Type Ma : Maintenance Deficiency Ob : Design & System Obsolescence En : Enforcement
--	--	---	---

**Flood Control Project Maintenance
Levee Inspections**

Maintenance Issue Types Only, Levee Inspection Report By Mile - Fall 2019

Butte County Department of Public Works

Waterway	Bank	Unit Miles	Inspection Start/End	Inspector
Unit No. 03 Sycamore and Sheep Hollow Creeks	Right	4.05	10/21/2019 10/21/2019	Makar Sokol

LM Start	2.17	Rating **	M	Issue No.	36 (cont)	
LM End	2.17	Issue Type +	Ma	Location *		
Category	Supplemental			GPS Latitude/Longitude		
				Start	End	
Item	DRAFT DWR UCIP LMA Responsibility			39.785290 °	39.785290 °	
				-121.844235 °	-121.844235 °	
DWR ID	19267					
Comment Code						
Inspector Comment						
DS_ID:19267 FS_ID:32124 EP_NO: N/A Repair Type: Non-Urgent Crossing Status: Found UCIP Comments: Pipe is about 4 feet below the crown. Needs cleaning and clearing the culvert. FIELD_STRUCT_DESC: 24-inch corrugated metal gravity drainage pipe through the levee, 6 feet below the crown. Flap gate on the waterside (WS) end. Concrete U-shaped headwall on each end. [Additional Reference(s): DWR Levee Log, 1992. USACE Sacramento O&M Manual 504, May 1965, (HLM 2.23)]. FS Date: 3/7/2014						

Photo 3 of 3 : UCIP_FA_2019_32124_58627.jpg



LS view: inside view of CMP on levee slope. Needs cleaning and clearing.

LM Start	2.68	Rating **	A/W	Issue No.	23
LM End	2.72	Issue Type +	Ma	Location *	WS
Category	Supplemental			GPS Latitude/Longitude	
				Start	End
Item	2017 USACE Erosion Survey			39.781508 °	39.781327 °
				-121.850137 °	-121.850828 °
DWR ID	DWR_ST0010_02_f_2022_13				
Comment Code					
Inspector Comment					
2017 Site ID: CHI 2.7 L					
Status: Eroding New					
2017 Field Notes: No trees on bank or levee. Large erosion scarp along lower bank.					
Site History:					

No Photos

* Location LS : Land Side N/A : Not Applicable WS : Water Side CR : Crown	** Rating A : Acceptable M : Minimally Acceptable U : Unacceptable	N : Not Inspected/Rated C : Corrected A/W : Acceptable but Monitor & Maintain	+ Issue Type Ma : Maintenance Deficiency Ob : Design & System Obsolescence En : Enforcement
--	--	---	---

**Flood Control Project Maintenance
Levee Inspections**

Maintenance Issue Types Only, Levee Inspection Report By Mile - Fall 2019

Butte County Department of Public Works

Waterway	Bank	Unit Miles	Inspection Start/End	Inspector
Unit No. 03 Sycamore and Sheep Hollow Creeks	Right	4.05	10/21/2019 10/21/2019	Makar Sokol

LM Start	3.08	Rating **	M	Issue No.	38
LM End	3.08	Issue Type +	Ma	Location *	
Category	Supplemental			GPS Latitude/Longitude	
				Start	End
Item	DRAFT DWR UCIP LMA Responsibility			39.778016 °	39.778016 °
				-121.854460 °	-121.854460 °
DWR ID	19269				
Comment Code					
Inspector Comment					
DS_ID:19269 FS_ID:31901 EP_NO: N/A Repair Type: Non-Urgent Crossing Status: Found UCIP Comments: Needs cleaning and clearing the culvert. FIELD_STRUCT_DESC: 24-inch corrugated metal gravity drainage pipe through the levee, 11 feet below the crown. Flap gate on the waterside (WS) end. Concrete U-shaped headwall on each end. Grouted riprap apron on the landside (LS) end. Grouted riprap spillway on the WS end. [Additional Reference(s): DWR Levee Log, 1992. USACE Sacramento O&M Manual 504, May 1965, (HLM 3.16)]. FS Date: 3/7/2014					

LM Start	3.08	Rating **	M	Issue No.	38 (cont)
LM End	3.08	Issue Type +	Ma	Location *	

Photo 1 of 3 : UCIP_FA_2019_31901_58194.jpg



WS view: U type concrete headwall, flapgate, and CMP on levee slope.
Needs cleaning and clearing.

Photo 2 of 3 : UCIP_FA_2019_31901_58193.jpg



LS view: U type concrete headwall and CMP on levee slope. Soil/mud on inlet box.

* Location LS : Land Side N/A : Not Applicable WS : Water Side CR : Crown	** Rating A : Acceptable M : Minimally Acceptable U : Unacceptable	N : Not Inspected/Rated C : Corrected A/W : Acceptable but Monitor & Maintain	+ Issue Type Ma : Maintenance Deficiency Ob : Design & System Obsolescence En : Enforcement
--	--	---	---

Butte County Department of Public Works

View of the wild growth at the landside toe. Spring 2019.

Page 13 of 20

**Flood Control Project Maintenance
Levee Inspections**

Maintenance Issue Types Only, Levee Inspection Report By Mile - Fall 2019

Butte County Department of Public Works

Waterway	Bank	Unit Miles	Inspection Start/End	Inspector
Unit No. 03 Sycamore and Sheep Hollow Creeks	Right	4.05	10/21/2019 10/21/2019	Makar Sokol

LM Start	3.19	Rating **	A/W	Issue No.	39	
LM End	3.19	Issue Type +	Ma	Location *		
Category	Supplemental			GPS Latitude/Longitude		
				Start		End
Item	DRAFT DWR UCIP LMA Responsibility			39.777463 °		39.777463 °
				-121.852512 °		-121.852512 °
DWR ID	19270					
Comment Code						
Inspector Comment						
DS_ID:19270						
FS_ID:31902						
EP_NO: N/A						
Repair Type: No Action Needed						
Crossing Status: Found						
UCIP Comments:						
FIELD_STRUCT_DESC: 24-inch corrugated metal gravity drainage pipe through the levee, 11 feet below the crown. Flap gate on the waterside (WS) end. Concrete U-shaped headwall on each end. Grouted riprap apron on the landside (LS) end. Grouted riprap spillway on the WS end. [Additional Reference(s): DWR Levee Log, 1992. USACE Sacramento O&M Manual 504, May 1965, (HLM 3.28)].						
FS Date: 3/7/2014						

LM Start	3.19	Rating **	A/W	Issue No.	39 (cont)
LM End	3.19	Issue Type +	Ma	Location *	

Photo 1 of 3 : UCIP_FA_2019_31902_58201.jpg



WS view: U type concrete headwall and grouted riprap spillway on levee slope.

Photo 2 of 3 : UCIP_FA_2019_31902_58200.jpg



WS view: U type concrete headwall and CMP on levee slope.

* Location LS : Land Side N/A : Not Applicable WS : Water Side CR : Crown	** Rating A : Acceptable M : Minimally Acceptable U : Unacceptable	N : Not Inspected/Rated C : Corrected A/W : Acceptable but Monitor & Maintain	+ Issue Type Ma : Maintenance Deficiency Ob : Design & System Obsolescence En : Enforcement
--	--	---	---

**Flood Control Project Maintenance
Levee Inspections**

Maintenance Issue Types Only, Levee Inspection Report By Mile - Fall 2019

Butte County Department of Public Works

Waterway	Bank	Unit Miles	Inspection Start/End	Inspector
Unit No. 03 Sycamore and Sheep Hollow Creeks	Right	4.05	10/21/2019 10/21/2019	Makar Sokol

LM Start	3.19	Rating **	A/W	Issue No.	39 (cont)	
LM End	3.19	Issue Type +	Ma	Location *		
Category	Supplemental			GPS Latitude/Longitude		
				Start	End	
Item	DRAFT DWR UCIP LMA Responsibility			39.777463 °	39.777463 °	
				-121.852512 °	-121.852512 °	
DWR ID	19270					
Comment Code						
Inspector Comment						
DS_ID:19270 FS_ID:31902 EP_NO: N/A Repair Type: No Action Needed Crossing Status: Found UCIP Comments: FIELD_STRUCT_DESC: 24-inch corrugated metal gravity drainage pipe through the levee, 11 feet below the crown. Flap gate on the waterside (WS) end. Concrete U-shaped headwall on each end. Grouted riprap apron on the landside (LS) end. Grouted riprap spillway on the WS end. [Additional Reference(s): DWR Levee Log, 1992. USACE Sacramento O&M Manual 504, May 1965, (HLM 3.28)]. FS Date: 3/7/2014						

Photo 3 of 3 : UCIP_FA_2019_31902_58199.jpg



LS view: U type concrete headwall and CMP on levee slope. Soil/mud on inlet box.

LM Start	3.34	Rating **	M	Issue No.	40	
LM End	3.34	Issue Type +	Ma	Location *		
Category	Supplemental			GPS Latitude/Longitude		
				Start		End
Item	DRAFT DWR UCIP LMA Responsibility			39.777410 °		39.777410 °
				-121.849627 °		-121.849627 °
DWR ID	19271					
Comment Code						
Inspector Comment						
DS_ID:19271 FS_ID:31864 EP_NO: N/A Repair Type: Non-Urgent Crossing Status: Found UCIP Comments: Needs cleaning and clearing the culvert. FIELD_STRUCT_DESC: 24-inch corrugated metal gravity drainage pipe through the levee, 10.5 feet below the crown. Flap gate on the waterside (WS) end. Concrete U-shaped headwall on each end. Grouted riprap apron on the landside (LS) end. Grouted riprap spillway on the WS end. [Additional Reference(s): DWR Levee Log, 1992. USACE Sacramento O&M Manual 504, May 1965, (HLM 3.43)]. FS Date: 3/7/2014						

Photo 1 of 3 : UCIP_FA_2019_31864_58069.jpg



WS view: U type concrete headwall, pipe, and flapgate on levee slope. Soil/mud on outlet box. Vegetation debris blocking outlet box.

* Location LS : Land Side N/A : Not Applicable WS : Water Side CR : Crown	** Rating A : Acceptable M : Minimally Acceptable U : Unacceptable	N : Not Inspected/Rated C : Corrected A/W : Acceptable but Monitor & Maintain	+ Issue Type Ma : Maintenance Deficiency Ob : Design & System Obsolescence En : Enforcement
--	--	---	---

**Flood Control Project Maintenance
Levee Inspections**

Maintenance Issue Types Only, Levee Inspection Report By Mile - Fall 2019

Butte County Department of Public Works

Waterway	Bank	Unit Miles	Inspection Start/End	Inspector
Unit No. 03 Sycamore and Sheep Hollow Creeks	Right	4.05	10/21/2019 10/21/2019	Makar Sokol

LM Start	3.34	Rating **	M	Issue No.	40 (cont)	
LM End	3.34	Issue Type +	Ma	Location *		
Category	Supplemental			GPS Latitude/Longitude		
				Start	End	
Item	DRAFT DWR UCIP LMA Responsibility			39.777410 °	39.777410 °	
				-121.849627 °	-121.849627 °	
DWR ID	19271					
Comment Code						
Inspector Comment						
DS_ID:19271 FS_ID:31864 EP_NO: N/A Repair Type: Non-Urgent Crossing Status: Found UCIP Comments: Needs cleaning and clearing the culvert. FIELD_STRUCT_DESC: 24-inch corrugated metal gravity drainage pipe through the levee, 10.5 feet below the crown. Flap gate on the waterside (WS) end. Concrete U-shaped headwall on each end. Grouted riprap apron on the landside (LS) end. Grouted riprap spillway on the WS end. [Additional Reference(s): DWR Levee Log, 1992. USACE Sacramento O&M Manual 504, May 1965, (HLM 3.43)]. FS Date: 3/7/2014						

LM Start	3.34	Rating **	M	Issue No.	40 (cont)
LM End	3.34	Issue Type +	Ma	Location *	

Photo 2 of 3 : UCIP_FA_2019_31864_58068.jpg



LS view: U type concrete headwall and CMP on levee slope. Soil/mud on inlet box.

Photo 3 of 3 : UCIP_FA_2019_31864_58067.jpg



LS view: inside view of CMP on levee slope. Needs cleaning and clearing.

* Location LS : Land Side N/A : Not Applicable WS : Water Side CR : Crown	** Rating A : Acceptable M : Minimally Acceptable U : Unacceptable	N : Not Inspected/Rated C : Corrected A/W : Acceptable but Monitor & Maintain	+ Issue Type Ma : Maintenance Deficiency Ob : Design & System Obsolescence En : Enforcement
--	--	---	---

**Flood Control Project Maintenance
Levee Inspections**

Maintenance Issue Types Only, Levee Inspection Report By Mile - Fall 2019

Butte County Department of Public Works

Waterway	Bank	Unit Miles	Inspection Start/End	Inspector
Unit No. 03 Sycamore and Sheep Hollow Creeks	Right	4.05	10/21/2019 10/21/2019	Makar Sokol

LM Start	3.38	Rating **	M	Issue No.	14
LM End	3.38	Issue Type +	Ma	Location *	LS
Category	Earthen Levee			GPS Latitude/Longitude	
				Start	End
Item	Vegetation			39.777429°	39.777429°
				-121.848937°	-121.848937°
DWR ID	DWR_NA0003_03_f_2016_14				
Comment Code					
V2 : Remove the wild growth other than native grasses from the levee slopes.					
Inspector Comment					

Photo 1 of 1 : FA_2019_NA0003_67_14_20190822_00003.jpg



View of a bush along the landside toe.

LM Start	3.50	Rating **	M	Issue No.	41
LM End	3.50	Issue Type +	Ma	Location *	
Category	Supplemental			GPS Latitude/Longitude	
				Start	End
Item	DRAFT DWR UCIP LMA Responsibility			39.777139°	39.777139°
				-121.846769°	-121.846769°
DWR ID	19272				
Comment Code					
Inspector Comment					
DS_ID:19272					
FS_ID:31856					
EP_NO: N/A					
Repair Type: Non-Urgent					
Crossing Status: Found					
UCIP Comments: Needs cleaning and clearing the culvert.					
FIELD_STRUCT_DESC: 24-inch corrugated metal gravity drainage pipe through the levee, 9.5 feet below the crown. Flap gate on the waterside (WS) end. Concrete U-shaped headwall on each end. Grouted riprap apron on the landside (LS) end. Grouted riprap spillway on the WS end. [Additional Reference(s): DWR Levee Log, 1992. USACE Sacramento O&M Manual 504, May 1965, (HLM 3.59)].					
FS Date: 3/7/2014					

Photo 1 of 3 : UCIP_FA_2019_31856_58053.jpg

WS view: U type concrete headwall, pipe, and flapgate on levee slope.
Soil/mud on outlet box.

* Location LS : Land Side N/A : Not Applicable WS : Water Side CR : Crown	** Rating A : Acceptable M : Minimally Acceptable U : Unacceptable	N : Not Inspected/Rated C : Corrected A/W : Acceptable but Monitor & Maintain	+ Issue Type Ma : Maintenance Deficiency Ob : Design & System Obsolescence En : Enforcement
--	--	--	---

**Flood Control Project Maintenance
Levee Inspections**

Maintenance Issue Types Only, Levee Inspection Report By Mile - Fall 2019

Butte County Department of Public Works

Waterway	Bank	Unit Miles	Inspection Start/End	Inspector
Unit No. 03 Sycamore and Sheep Hollow Creeks	Right	4.05	10/21/2019 10/21/2019	Makar Sokol

LM Start	3.50	Rating **	M	Issue No.	41 (cont)	
LM End	3.50	Issue Type +	Ma	Location *		
Category	Supplemental			GPS Latitude/Longitude		
				Start	End	
Item	DRAFT DWR UCIP LMA Responsibility			39.777139°	39.777139°	
				-121.846769°	-121.846769°	
DWR ID	19272					
Comment Code						
Inspector Comment						
DS_ID:19272 FS_ID:31856 EP_NO: N/A Repair Type: Non-Urgent Crossing Status: Found UCIP Comments: Needs cleaning and clearing the culvert. FIELD_STRUCT_DESC: 24-inch corrugated metal gravity drainage pipe through the levee, 9.5 feet below the crown. Flap gate on the waterside (WS) end. Concrete U-shaped headwall on each end. Grouted riprap apron on the landside (LS) end. Grouted riprap spillway on the WS end. [Additional Reference(s): DWR Levee Log, 1992. USACE Sacramento O&M Manual 504, May 1965, (HLM 3.59)]. FS Date: 3/7/2014						

LM Start	3.50	Rating **	M	Issue No.	41 (cont)
LM End	3.50	Issue Type +	Ma	Location *	

Photo 2 of 3 : UCIP_FA_2019_31856_58052.jpg



LS view: U type concrete headwall and CMP on levee slope. Soil/mud on inlet box.

Photo 3 of 3 : UCIP_FA_2019_31856_58051.jpg



LS view: inside view of CMP on levee slope. Needs cleaning and clearing.

* Location LS : Land Side N/A : Not Applicable WS : Water Side CR : Crown	** Rating A : Acceptable M : Minimally Acceptable U : Unacceptable	N : Not Inspected/Rated C : Corrected A/W : Acceptable but Monitor & Maintain	+ Issue Type Ma : Maintenance Deficiency Ob : Design & System Obsolescence En : Enforcement
--	--	---	---

**Flood Control Project Maintenance
Levee Inspections**

Maintenance Issue Types Only, Levee Inspection Report By Mile - Fall 2019

Butte County Department of Public Works

Waterway	Bank	Unit Miles	Inspection Start/End	Inspector
Unit No. 03 Sycamore and Sheep Hollow Creeks	Right	4.05	10/21/2019 10/21/2019	Makar Sokol

LM Start	3.68	Rating **	M	Issue No.	43	
LM End	3.68	Issue Type +	Ma	Location *		
Category	Supplemental			GPS Latitude/Longitude		
				Start		End
Item	DRAFT DWR UCIP LMA Responsibility			39.777662 °		39.777662 °
				-121.843489 °		-121.843489 °
DWR ID	19275					
Comment Code						
Inspector Comment						
DS_ID:19275						
FS_ID:32125						
EP_NO: N/A						
Repair Type: Non-Urgent						
Crossing Status: Found						
UCIP Comments: The culvert was working during the field visit.Needs cleaning and clearing on both ends of the pipe.						
FIELD_STRUCT_DESC: 24-inch corrugated metal gravity drainage pipe through the levee, 7.5 feet below the crown. Flap gate on the waterside (WS) end. Concrete U-shaped headwall on each end. Grouted riprap apron on the landside (LS) end. Grouted riprap spillway on the WS end. [Additional Reference(s): DWR Levee Log, 1992. USACE Sacramento O&M Manual 504, May 1965, (HLM 3.76)].						
FS Date: 3/4/2014						

LM Start	3.68	Rating **	M	Issue No.	43 (cont)
LM End	3.68	Issue Type +	Ma	Location *	

Photo 1 of 2 : UCIP_FA_2019_32125_58629.jpg



WS view: U type concrete headwall, pipe, and flapgate on levee slope. Soil/mud on outlet box. Vegetation debris blocking outlet box.

Photo 2 of 2 : UCIP_FA_2019_32125_58628.jpg



LS view: U type concrete headwall and pipe on levee slope. Soil/mud on inlet box. Vegetation debris blocking inlet box.

* Location LS : Land Side N/A : Not Applicable WS : Water Side CR : Crown	** Rating A : Acceptable M : Minimally Acceptable U : Unacceptable	N : Not Inspected/Rated C : Corrected A/W : Acceptable but Monitor & Maintain	+ Issue Type Ma : Maintenance Deficiency Ob : Design & System Obsolescence En : Enforcement
--	--	---	---

**Flood Control Project Maintenance
Levee Inspections**

Maintenance Issue Types Only, Levee Inspection Report By Mile - Fall 2019

Butte County Department of Public Works

Waterway	Bank	Unit Miles	Inspection Start/End	Inspector
Unit No. 03 Sycamore and Sheep Hollow Creeks	Right	4.05	10/21/2019 10/21/2019	Makar Sokol

LM Start	3.82	Rating **	M	Issue No.	20							
LM End	3.82	Issue Type +	Ma	Location *	CR							
Category	Earthen Levee		GPS Latitude/Longitude									
			Start	End								
Item	Vegetation		39.779026°	39.779026°								
			-121.841625°	-121.841625°								
DWR ID	DWR_NA0003_03_f_2019_20											
Comment Code												
V2 : Remove the wild growth other than native grasses from the levee slopes.												
Inspector Comment												

No Photos

LM Start	3.96	Rating **	M	Issue No.	21							
LM End	3.96	Issue Type +	Ma	Location *	CR							
Category	Earthen Levee		GPS Latitude/Longitude									
			Start	End								
Item	Vegetation		39.780606°	39.780606°								
			-121.840048°	-121.840048°								
DWR ID	DWR_NA0003_03_f_2019_21											
Comment Code												
V9 : Keep the crown roadway free of vegetation.												
Inspector Comment												

Photo 1 of 1 : FA_2019_NA0003_67_21_20191028_00039.jpg



View of the brush on top of crown. Fall 2019.

LM Start	4.03	Rating **	M	Issue No.	28							
LM End	4.03	Issue Type +	Ma	Location *	CR							
Category	Earthen Levee		GPS Latitude/Longitude									
			Start	End								
Item	Vegetation		39.781465°	39.781465°								
			-121.839541°	-121.839541°								
DWR ID	DWR_NA0003_03_f_2019_28											
Comment Code												
V9 : Keep the crown roadway free of vegetation.												
Inspector Comment												

No Photos

* Location LS : Land Side N/A : Not Applicable WS : Water Side CR : Crown	** Rating A : Acceptable M : Minimally Acceptable U : Unacceptable	N : Not Inspected/Rated C : Corrected A/W : Acceptable but Monitor & Maintain	+ Issue Type Ma : Maintenance Deficiency Ob : Design & System Obsolescence En : Enforcement
--	--	---	---

**Flood Control Project Maintenance
Levee Inspections**

Maintenance Issue Types Only, Levee Inspection Report By Mile - Fall 2019

Butte County Department of Public Works

Waterway	Bank	Unit Miles	Inspection Start/End	Inspector
Unit No. 04 Sycamore and Dry Creeks	Right	2.86	10/21/2019 10/21/2019	Makar Sokol

LM Start	0.16	Rating **	M	Issue No.	20
LM End	0.16	Issue Type +	Ma	Location *	LS
Category	Earthen Levee			GPS Latitude/Longitude	
				Start	End
Item	Vegetation			39.776526 °	39.776526 °
				-121.848727 °	-121.848727 °
DWR ID	DWR_NA0003_04_f_2016_20				
Comment Code					
V2 : Remove the wild growth other than native grasses from the levee slopes.					
Inspector Comment					

Photo 1 of 1 : FA_2019_NA0003_68_20_20190822_00005.jpg



View of the vegetation along the landside toe.

LM Start	0.27	Rating **	M	Issue No.	42
LM End	0.27	Issue Type +	Ma	Location *	
Category	Supplemental			GPS Latitude/Longitude	
				Start	End
Item	DRAFT DWR UCIP LMA Responsibility			39.776554 °	39.776554 °
				-121.850730 °	-121.850730 °
DWR ID	19279				
Comment Code					
Inspector Comment					
DS_ID:19279 FS_ID:32026 EP_NO: N/A Repair Type: Non-Urgent Crossing Status: Found UCIP Comments: Needs cleaning and clearing the culvert. FIELD_STRUCT_DESC: 24-inch corrugated metal gravity drainage pipe through the levee, 10 feet below the crown. Flap gate on the waterside (WS) end. Concrete U-shaped headwall on each end. Grouted riprap apron on the landside (LS) end. Grouted riprap spillway on the WS end. [Additional Reference(s): DWR Levee Log, 1992. USACE Sacramento O&M Manual 504, May 1965, (HLM 0.28)]. FS Date: 3/7/2014					

Photo 1 of 3 : UCIP_FA_2019_32026_58520.jpg



WS view: concrete headwall and grouted riprap spillway on levee slope.

* Location LS : Land Side N/A : Not Applicable WS : Water Side CR : Crown	** Rating A : Acceptable M : Minimally Acceptable U : Unacceptable	N : Not Inspected/Rated C : Corrected A/W : Acceptable but Monitor & Maintain	+ Issue Type Ma : Maintenance Deficiency Ob : Design & System Obsolescence En : Enforcement
--	--	---	---

**Flood Control Project Maintenance
Levee Inspections**

Maintenance Issue Types Only, Levee Inspection Report By Mile - Fall 2019

Butte County Department of Public Works

Waterway	Bank	Unit Miles	Inspection Start/End	Inspector
Unit No. 04 Sycamore and Dry Creeks	Right	2.86	10/21/2019 10/21/2019	Makar Sokol

LM Start	0.27	Rating **	M	Issue No.	42 (cont)
LM End	0.27	Issue Type +	Ma	Location *	
Category	Supplemental			GPS Latitude/Longitude	
				Start	End
Item	DRAFT DWR UCIP LMA Responsibility			39.776554 °	39.776554 °
				-121.850730 °	-121.850730 °
DWR ID	19279				
Comment Code					
Inspector Comment					
DS_ID:19279 FS_ID:32026 EP_NO: N/A Repair Type: Non-Urgent Crossing Status: Found UCIP Comments: Needs cleaning and clearing the culvert. FIELD_STRUCT_DESC: 24-inch corrugated metal gravity drainage pipe through the levee, 10 feet below the crown. Flap gate on the waterside (WS) end. Concrete U-shaped headwall on each end. Grouted riprap apron on the landside (LS) end. Grouted riprap spillway on the WS end. [Additional Reference(s): DWR Levee Log, 1992. USACE Sacramento O&M Manual 504, May 1965, (HLM 0.28)]. FS Date: 3/7/2014					

LM Start	0.27	Rating **	M	Issue No.	42 (cont)
LM End	0.27	Issue Type +	Ma	Location *	

Photo 2 of 3 : UCIP_FA_2019_32026_58519.jpg



WS view: U type concrete headwall and CMP on levee slope. Mud and vegetation debris on outlet box.

Photo 3 of 3 : UCIP_FA_2019_32026_58518.jpg



LS view: U type concrete headwall and CMP on levee slope. Mud and pebbles on inlet box.

* Location LS : Land Side N/A : Not Applicable WS : Water Side CR : Crown	** Rating A : Acceptable M : Minimally Acceptable U : Unacceptable	N : Not Inspected/Rated C : Corrected A/W : Acceptable but Monitor & Maintain	+ Issue Type Ma : Maintenance Deficiency Ob : Design & System Obsolescence En : Enforcement
--	--	---	---

**Flood Control Project Maintenance
Levee Inspections**

Maintenance Issue Types Only, Levee Inspection Report By Mile - Fall 2019

Butte County Department of Public Works

Waterway	Bank	Unit Miles	Inspection Start/End	Inspector
Unit No. 04 Sycamore and Dry Creeks	Right	2.86	10/21/2019 10/21/2019	Makar Sokol

LM Start	0.33	Rating **	M	Issue No.	43	
LM End	0.33	Issue Type +	Ma	Location *		
Category	Supplemental			GPS Latitude/Longitude		
				Start		End
Item	DRAFT DWR UCIP LMA Responsibility			39.775926 °		39.775926 °
				-121.850647 °		-121.850647 °
DWR ID	19280					
Comment Code						
Inspector Comment						
DS_ID:19280 FS_ID:32025 EP_NO: N/A Repair Type: Non-Urgent Crossing Status: Found UCIP Comments: Slide gate in a CMP riser. Vegetation debris and mud on inlet box.Needs cleaning and clearing the culvert. FIELD_STRUCT_DESC: 24-inch corrugated metal gravity drainage pipe through the levee and under the channel, 9.5 feet below the crown. Slide gate in a corrugated metal pipe (CMP) riser on the waterside (WS) slope. Concrete U-shaped headwall on the landside (LS) end. [Additional Reference(s): DWR Levee Log, 1992. USACE Sacramento O&M Manual 504, May 1965, (HLM 0.34)]. FS Date: 3/7/2014						

LM Start	0.33	Rating **	M	Issue No.	43 (cont)
LM End	0.33	Issue Type +	Ma	Location *	

Photo 1 of 3 : UCIP_FA_2019_32025_58512.jpg



WS view: slide gate in CMP riser on waterside shoulder.

Photo 2 of 3 : UCIP_FA_2019_32025_58511.jpg



WS view: inside view of slide gate in CMP riser on waterside shoulder.
Debris trapped in the riser.

* Location LS : Land Side N/A : Not Applicable WS : Water Side CR : Crown	** Rating A : Acceptable M : Minimally Acceptable U : Unacceptable	N : Not Inspected/Rated C : Corrected A/W : Acceptable but Monitor & Maintain	+ Issue Type Ma : Maintenance Deficiency Ob : Design & System Obsolescence En : Enforcement
--	--	---	---

**Flood Control Project Maintenance
Levee Inspections**

Maintenance Issue Types Only, Levee Inspection Report By Mile - Fall 2019

Butte County Department of Public Works

Waterway	Bank	Unit Miles	Inspection Start/End	Inspector
Unit No. 04 Sycamore and Dry Creeks	Right	2.86	10/21/2019 10/21/2019	Makar Sokol

LM Start	0.33	Rating **	M	Issue No.	43 (cont)	
LM End	0.33	Issue Type +	Ma	Location *		
Category	Supplemental			GPS Latitude/Longitude		
				Start		End
Item	DRAFT DWR UCIP LMA Responsibility			39.775926 °		39.775926 °
				-121.850647 °		-121.850647 °
DWR ID	19280					
Comment Code						
Inspector Comment						
DS_ID:19280						
FS_ID:32025						
EP_NO: N/A						
Repair Type: Non-Urgent						
Crossing Status: Found						
UCIP Comments: Slide gate in a CMP riser. Vegetation debris and mud on inlet box.Needs cleaning and clearing the culvert.						
FIELD_STRUCT_DESC: 24-inch corrugated metal gravity drainage pipe through the levee and under the channel, 9.5 feet below the crown.						
Slide gate in a corrugated metal pipe (CMP) riser on the waterside (WS) slope. Concrete U-shaped headwall on the landside (LS) end.						
[Additional Reference(s): DWR Levee Log, 1992. USACE Sacramento O&M Manual 504, May 1965, (HLM 0.34)].						
FS Date: 3/7/2014						

Photo 3 of 3 : UCIP_FA_2019_32025_58510.jpg



LS view: U type concrete headwall and CMP on levee slope. Vegetation debris and mud on inlet box.

LM Start	0.35	Rating **	M	Issue No.	44
LM End	0.35	Issue Type +	Ma	Location *	
Category	Supplemental			GPS Latitude/Longitude	
				Start	End
Item	DRAFT DWR UCIP LMA Responsibility			39.775682 °	39.775682 °
				-121.850375 °	-121.850375 °
DWR ID	19281				
Comment Code					
Inspector Comment					
DS_ID:19281 FS_ID:32023 EP_NO: N/A Repair Type: Non-Urgent Crossing Status: Found UCIP Comments: Needs cleaning and clearing the culvert. FIELD_STRUCT_DESC: 24-inch corrugated metal gravity drainage pipe through the levee, 8 feet below the crown. Flap gate on the waterside (WS) end. Concrete U-shaped headwall on each end. Grouted riprap apron on the landside (LS) end. Grouted riprap spillway on the WS end. [Additional Reference(s): DWR Levee Log, 1992. USACE Sacramento O&M Manual 504, May 1965, (HLM 0.36)]. FS Date: 3/7/2014					

Photo 1 of 3 : UCIP_FA_2019_32023_58505.jpg



WS view: U type concrete headwall and CMP on levee slope. Vegetation debris and mud on outlet box. Needs cleaning and clearing.

* Location LS : Land Side N/A : Not Applicable WS : Water Side CR : Crown	** Rating A : Acceptable M : Minimally Acceptable U : Unacceptable	N : Not Inspected/Rated C : Corrected A/W : Acceptable but Monitor & Maintain	+ Issue Type Ma : Maintenance Deficiency Ob : Design & System Obsolescence En : Enforcement
--	--	---	---

**Flood Control Project Maintenance
Levee Inspections**

Maintenance Issue Types Only, Levee Inspection Report By Mile - Fall 2019

Butte County Department of Public Works

Waterway	Bank	Unit Miles	Inspection Start/End	Inspector
Unit No. 04 Sycamore and Dry Creeks	Right	2.86	10/21/2019 10/21/2019	Makar Sokol

LM Start	0.35	Rating **	M	Issue No.	44 (cont)	
LM End	0.35	Issue Type +	Ma	Location *		
Category	Supplemental			GPS Latitude/Longitude		
				Start	End	
Item	DRAFT DWR UCIP LMA Responsibility			39.775682 °	39.775682 °	
				-121.850375 °	-121.850375 °	
DWR ID	19281					
Comment Code						
Inspector Comment						
DS_ID:19281 FS_ID:32023 EP_NO: N/A Repair Type: Non-Urgent Crossing Status: Found UCIP Comments: Needs cleaning and clearing the culvert. FIELD_STRUCT_DESC: 24-inch corrugated metal gravity drainage pipe through the levee, 8 feet below the crown. Flap gate on the waterside (WS) end. Concrete U-shaped headwall on each end. Grouted riprap apron on the landside (LS) end. Grouted riprap spillway on the WS end. [Additional Reference(s): DWR Levee Log, 1992. USACE Sacramento O&M Manual 504, May 1965, (HLM 0.36)]. FS Date: 3/7/2014						

LM Start	0.35	Rating **	M	Issue No.	44 (cont)
LM End	0.35	Issue Type +	Ma	Location *	

Photo 2 of 3 : UCIP_FA_2019_32023_58504.jpg



LS view: U type concrete headwall and CMP on levee slope. Pebbles and mud on inlet box.

Photo 3 of 3 : UCIP_FA_2019_32023_58503.jpg



LS view: inside view of the CM pipe. Needs cleaning and clearing the pipe.

* Location LS : Land Side N/A : Not Applicable WS : Water Side CR : Crown	** Rating A : Acceptable M : Minimally Acceptable U : Unacceptable	N : Not Inspected/Rated C : Corrected A/W : Acceptable but Monitor & Maintain	+ Issue Type Ma : Maintenance Deficiency Ob : Design & System Obsolescence En : Enforcement
--	--	---	---

**Flood Control Project Maintenance
Levee Inspections**

Maintenance Issue Types Only, Levee Inspection Report By Mile - Fall 2019

Butte County Department of Public Works

Waterway	Bank	Unit Miles	Inspection Start/End	Inspector
Unit No. 04 Sycamore and Dry Creeks	Right	2.86	10/21/2019 10/21/2019	Makar Sokol

LM Start	0.35	Rating **	M	Issue No.	21
LM End	0.39	Issue Type +	Ma	Location *	LS
Category	Earthen Levee			GPS Latitude/Longitude	
				Start	End
Item	Vegetation			39.775672°	39.775220°
				-121.850301°	-121.849805°
DWR ID	DWR_NA0003_04_f_2016_21				
Comment Code					
V2 : Remove the wild growth other than native grasses from the levee slopes.					
Inspector Comment					

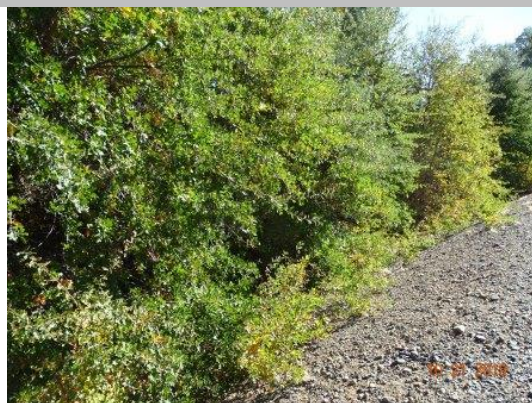
Photo 1 of 1 : FA_2019_NA0003_68_21_20190822_00006.jpg



View of the overgrown trees along the landside toe.

LM Start	0.35	Rating **	M	Issue No.	14
LM End	0.38	Issue Type +	Ma	Location *	WS
Category	Earthen Levee			GPS Latitude/Longitude	
				Start	End
Item	Trim / Thin Trees			39.775656 °	39.775289 °
				-121.850308 °	-121.849907 °
DWR ID	DWR_NA0003_04_f_2019_14				
Comment Code					
T1 : Trim trees to at least five feet above ground level.					
Inspector Comment					

Photo 1 of 1 : FA_2019_NA0003_68_14_20191028_00035.jpg



View of trees and wild growth along the waterside slope and toe. Fall 2019.

LM Start	0.63	Rating **	M	Issue No.	26
LM End	0.63	Issue Type +	Ma	Location *	WS
Category	Earthen Levee			GPS Latitude/Longitude	
				Start	End
Item	Erosion / Bank Caving			39.773988 °	39.773988 °
				-121.846320 °	-121.846320 °
DWR ID	DWR_NA0003_04_s_2019_26				
Comment Code					
E2 : Schedule repair of erosion site prior to the next inspection.					
Inspector Comment					
Erosion rills are located in this area. The storm inlet on the landside may not be functioning properly and may impact ability to access the patrol road.					

No Photos

* Location LS : Land Side N/A : Not Applicable WS : Water Side CR : Crown		** Rating A : Acceptable M : Minimally Acceptable U : Unacceptable		N : Not Inspected/Rated C : Corrected A/W : Acceptable but Monitor & Maintain		+ Issue Type Ma : Maintenance Deficiency Ob : Design & System Obsolescence En : Enforcement	
---	--	---	--	---	--	--	--

**Flood Control Project Maintenance
Levee Inspections**

Maintenance Issue Types Only, Levee Inspection Report By Mile - Fall 2019

Butte County Department of Public Works

Waterway	Bank	Unit Miles	Inspection Start/End	Inspector
Unit No. 04 Sycamore and Dry Creeks	Right	2.86	10/21/2019 10/21/2019	Makar Sokol

LM Start	0.77	Rating **	M	Issue No.	32
LM End	0.77	Issue Type +	Ma	Location *	LS
Category	Earthen Levee		GPS Latitude/Longitude		
			Start	End	
Item	Encroachments		39.774198°	39.774198°	
			-121.849021°	-121.849021°	
DWR ID	DWR_NA0003_04_s_2019_32				
Comment Code					
PR : Prunings					
Inspector Comment					
The prunings should be removed from the landside slope.					

No Photos

LM Start	0.83	Rating **	M	Issue No.	31
LM End	0.83	Issue Type +	Ma	Location *	LS
Category	Earthen Levee		GPS Latitude/Longitude		
			Start	End	
Item	Trim / Thin Trees		39.774801°	39.774801°	
			-121.849850°	-121.849850°	
DWR ID	DWR_NA0003_04_s_2019_31				
Comment Code					
T2 : Thin trees to allow visibility of the ground and room to flood fight.					
Inspector Comment					
Trees smaller than 4-inches in diameter at chest height should be removed.					

No Photos

LM Start	0.88	Rating **	M	Issue No.	29
LM End	0.88	Issue Type +	Ma	Location *	LS
Category	Earthen Levee		GPS Latitude/Longitude		
			Start	End	
Item	Vegetation		39.775362°	39.775362°	
			-121.850468°	-121.850468°	
DWR ID	DWR_NA0003_04_s_2019_29				
Comment Code					
V2 : Remove the wild growth other than native grasses from the levee slopes.					
Inspector Comment					

No Photos

* Location
LS : Land Side N/A : Not Applicable
WS : Water Side
CR : Crown

** Rating
A : Acceptable
M : Minimally Acceptable
U : Unacceptable
N : Not Inspected/Rated
C : Corrected
A/W : Acceptable but Monitor & Maintain

+ Issue Type
Ma : Maintenance Deficiency
Ob : Design & System Obsolescence
En : Enforcement

**Flood Control Project Maintenance
Levee Inspections**

Maintenance Issue Types Only, Levee Inspection Report By Mile - Fall 2019

Butte County Department of Public Works

Waterway	Bank	Unit Miles	Inspection Start/End	Inspector
Unit No. 04 Sycamore and Dry Creeks	Right	2.86	10/21/2019 10/21/2019	Makar Sokol

LM Start	0.91	Rating **	M	Issue No.	28
LM End	0.91	Issue Type +	Ma	Location *	LS
Category	Earthen Levee			GPS Latitude/Longitude	
				Start	End
Item	Trim / Thin Trees			39.775610 °	39.775610 °
				-121.850807 °	-121.850807 °
DWR ID	DWR_NA0003_04_s_2019_28				
Comment Code					
T2 : Thin trees to allow visibility of the ground and room to flood fight.					
Inspector Comment					

No Photos

LM Start	0.92	Rating **	M	Issue No.	45	
LM End	0.92	Issue Type +	Ma	Location *		
Category	Supplemental			GPS Latitude/Longitude		
				Start		End
Item	DRAFT DWR UCIP LMA Responsibility			39.775704 °		39.775704 °
				-121.850901 °		-121.850901 °
DWR ID	19287					
Comment Code						
Inspector Comment						
DS_ID:19287 FS_ID:32143 EP_NO: N/A Repair Type: Non-Urgent Crossing Status: Found UCIP Comments: Needs cleaning and clearing the culvert. FIELD_STRUCT_DESC: 24-inch corrugated metal gravity drainage pipe through the levee, 9 feet below the crown. Flap gate on the waterside (WS) end. Concrete U-shaped headwall on each end. Grouted riprap apron on the landside (LS) end. Grouted riprap spillway on the WS end. [Additional Reference(s): DWR Levee Log, 1992. USACE Sacramento O&M Manual 504, May 1965, (HLM 0.96)]. FS Date: 3/7/2014						

Photo 1 of 2 : UCIP_FA_2019_32143_58641.jpg



WS view: U type concrete headwall and CMP on levee slope. Soil/mud on outlet box. Needs cleaning and clearing.

* Location LS : Land Side N/A : Not Applicable WS : Water Side CR : Crown	** Rating A : Acceptable M : Minimally Acceptable U : Unacceptable	N : Not Inspected/Rated C : Corrected A/W : Acceptable but Monitor & Maintain	+ Issue Type Ma : Maintenance Deficiency Ob : Design & System Obsolescence En : Enforcement
--	--	---	---

**Flood Control Project Maintenance
Levee Inspections**

Maintenance Issue Types Only, Levee Inspection Report By Mile - Fall 2019

Butte County Department of Public Works

Waterway	Bank	Unit Miles	Inspection Start/End	Inspector
Unit No. 04 Sycamore and Dry Creeks	Right	2.86	10/21/2019 10/21/2019	Makar Sokol

LM Start	0.92	Rating **	M	Issue No.	45 (cont)
LM End	0.92	Issue Type +	Ma	Location *	
Category	Supplemental			GPS Latitude/Longitude	
				Start	End
Item	DRAFT DWR UCIP LMA Responsibility			39.775704 °	39.775704 °
				-121.850901 °	-121.850901 °
DWR ID	19287				
Comment Code					
Inspector Comment					
DS_ID:19287 FS_ID:32143 EP_NO: N/A Repair Type: Non-Urgent Crossing Status: Found UCIP Comments: Needs cleaning and clearing the culvert. FIELD_STRUCT_DESC: 24-inch corrugated metal gravity drainage pipe through the levee, 9 feet below the crown. Flap gate on the waterside (WS) end. Concrete U-shaped headwall on each end. Grouted riprap apron on the landside (LS) end. Grouted riprap spillway on the WS end. [Additional Reference(s): DWR Levee Log, 1992. USACE Sacramento O&M Manual 504, May 1965, (HLM 0.96)]. FS Date: 3/7/2014					

Photo 2 of 2 : UCIP_FA_2019_32143_58640.jpg



LS view: U type concrete headwall and CMP on levee slope. Vegetation and mud on inlet box.

LM Start	0.94	Rating **	M	Issue No.	47
LM End	0.94	Issue Type +	Ma	Location *	
Category	Supplemental			GPS Latitude/Longitude	
				Start	End
Item	DRAFT DWR UCIP LMA Responsibility			39.775899 °	39.775899 °
				-121.851124 °	-121.851124 °
DWR ID	19288				
Comment Code					
Inspector Comment					
DS_ID:19288					
FS_ID:32144					
EP_NO: N/A					
Repair Type: Non-Urgent					
Crossing Status: Found					
UCIP Comments: Slide gate in CMP riser on waterside. No access to CMP riser.Needs cleaning and clearing the culvert.					
FIELD_STRUCT_DESC: 24-inch corrugated metal gravity drainage pipe through the levee and under the channel, 9.5 feet below the crown.					
Slide gate in a pipe riser on the waterside (WS) slope. Concrete U-shaped headwall on the landside (LS) end. [Additional Reference(s): DWR Levee Log, 1992. USACE Sacramento O&M Manual 504, May 1965, (HLM 0.98)].					
FS Date: 3/7/2014					

Photo 1 of 3 : UCIP_FA_2019_32144_58644.jpg



LS view: U type concrete headwall of CMP culvert on levee slope. Vegetation debris and mud on inlet box.

* Location LS : Land Side N/A : Not Applicable WS : Water Side CR : Crown		** Rating A : Acceptable M : Minimally Acceptable U : Unacceptable N : Not Inspected/Rated C : Corrected A/W : Acceptable but Monitor & Maintain		+ Issue Type Ma : Maintenance Deficiency Ob : Design & System Obsolescence En : Enforcement	
--	--	---	--	---	--

**Flood Control Project Maintenance
Levee Inspections**

Maintenance Issue Types Only, Levee Inspection Report By Mile - Fall 2019

Butte County Department of Public Works

Waterway	Bank	Unit Miles	Inspection Start/End	Inspector
Unit No. 04 Sycamore and Dry Creeks	Right	2.86	10/21/2019 10/21/2019	Makar Sokol

LM Start	0.94	Rating **	M	Issue No.	47 (cont)	
LM End	0.94	Issue Type +	Ma	Location *		
Category	Supplemental			GPS Latitude/Longitude		
				Start		End
Item	DRAFT DWR UCIP LMA Responsibility			39.775899 °		39.775899 °
				-121.851124 °		-121.851124 °
DWR ID	19288					
Comment Code						
Inspector Comment						
DS_ID:19288 FS_ID:32144 EP_NO: N/A Repair Type: Non-Urgent Crossing Status: Found UCIP Comments: Slide gate in CMP riser on waterside. No access to CMP riser.Needs cleaning and clearing the culvert. FIELD_STRUCT_DESC: 24-inch corrugated metal gravity drainage pipe through the levee and under the channel, 9.5 feet below the crown. Slide gate in a pipe riser on the waterside (WS) slope. Concrete U-shaped headwall on the landside (LS) end. [Additional Reference(s): DWR Levee Log, 1992. USACE Sacramento O&M Manual 504, May 1965, (HLM 0.98)]. FS Date: 3/7/2014						

LM Start	0.94	Rating **	M	Issue No.	47 (cont)
LM End	0.94	Issue Type +	Ma	Location *	

Photo 2 of 3 : UCIP_FA_2019_32144_58643.jpg



LS view: close view of vegetation debris and mud on inlet box.

Photo 3 of 3 : UCIP_FA_2019_32144_58642.jpg



WS view: slide gate in CMP riser on waterside. No access to CMP riser.

* Location LS : Land Side N/A : Not Applicable WS : Water Side CR : Crown	** Rating A : Acceptable M : Minimally Acceptable U : Unacceptable	N : Not Inspected/Rated C : Corrected A/W : Acceptable but Monitor & Maintain	+ Issue Type Ma : Maintenance Deficiency Ob : Design & System Obsolescence En : Enforcement
--	--	---	---

**Flood Control Project Maintenance
Levee Inspections**

Maintenance Issue Types Only, Levee Inspection Report By Mile - Fall 2019

Butte County Department of Public Works

Waterway	Bank	Unit Miles	Inspection Start/End	Inspector
Unit No. 04 Sycamore and Dry Creeks	Right	2.86	10/21/2019 10/21/2019	Makar Sokol

LM Start	1.04	Rating **	M	Issue No.	23
LM End	1.04	Issue Type +	Ma	Location *	LS
Category	Earthen Levee			GPS Latitude/Longitude	
				Start	End
Item	Vegetation			39.776589 °	39.776589 °
				-121.852600 °	-121.852600 °
DWR ID	DWR_NA0003_04_f_2016_23				
Comment Code					
V2 : Remove the wild growth other than native grasses from the levee slopes.					
Inspector Comment					

Photo 1 of 1 : FA_2019_NA0003_68_23_20190822_00007.jpg



View of the blackberries blocking visibility and access.

LM Start	1.11	Rating **	M	Issue No.	48	
LM End	1.11	Issue Type +	Ma	Location *		
Category	Supplemental			GPS Latitude/Longitude		
				Start	End	
Item	DRAFT DWR UCIP LMA Responsibility			39.776709 °	39.776709 °	
				-121.853932 °	-121.853932 °	
DWR ID	19289					
Comment Code						
Inspector Comment						
DS_ID:19289						
FS_ID:31963						
EP_NO: N/A						
Repair Type: Non-Urgent						
Crossing Status: Found						
UCIP Comments: Needs cleaning and clearing the culvert.						
FIELD_STRUCT_DESC: 24-inch corrugated metal gravity drainage pipe through the levee, 11 feet below the crown. Flap gate on the waterside (WS) end. Concrete U-shaped headwall on each end. Grouted riprap apron on the landside (LS) end. Grouted riprap spillway on the WS end.						
[Additional Reference(s): DWR Levee Log, 1992. USACE Sacramento O&M Manual 504, May 1965, (HLM 1.15)].						
FS Date: 3/7/2014						

Photo 1 of 3 : UCIP_FA_2019_31963_58384.jpg



WS view: U type concrete headwall and CMP on levee slope. Vegetation debris and mud on outlet box. Needs cleaning and clearing.

* Location LS : Land Side N/A : Not Applicable WS : Water Side CR : Crown	** Rating A : Acceptable M : Minimally Acceptable U : Unacceptable	N : Not Inspected/Rated C : Corrected A/W : Acceptable but Monitor & Maintain	+ Issue Type Ma : Maintenance Deficiency Ob : Design & System Obsolescence En : Enforcement
--	--	---	---

**Flood Control Project Maintenance
Levee Inspections**

Maintenance Issue Types Only, Levee Inspection Report By Mile - Fall 2019

Butte County Department of Public Works

Waterway	Bank	Unit Miles	Inspection Start/End	Inspector
Unit No. 04 Sycamore and Dry Creeks	Right	2.86	10/21/2019 10/21/2019	Makar Sokol

LM Start	1.11	Rating **	M	Issue No.	48 (cont)	
LM End	1.11	Issue Type +	Ma	Location *		
Category	Supplemental			GPS Latitude/Longitude		
				Start	End	
Item	DRAFT DWR UCIP LMA Responsibility			39.776709 °	39.776709 °	
				-121.853932 °	-121.853932 °	
DWR ID	19289					
Comment Code						
Inspector Comment						
DS_ID:19289 FS_ID:31963 EP_NO: N/A Repair Type: Non-Urgent Crossing Status: Found UCIP Comments: Needs cleaning and clearing the culvert. FIELD_STRUCT_DESC: 24-inch corrugated metal gravity drainage pipe through the levee, 11 feet below the crown. Flap gate on the waterside (WS) end. Concrete U-shaped headwall on each end. Grouted riprap apron on the landside (LS) end. Grouted riprap spillway on the WS end. [Additional Reference(s): DWR Levee Log, 1992. USACE Sacramento O&M Manual 504, May 1965, (HLM 1.15)]. FS Date: 3/7/2014						

LM Start	1.11	Rating **	M	Issue No.	48 (cont)
LM End	1.11	Issue Type +	Ma	Location *	

Photo 2 of 3 : UCIP_FA_2019_31963_58383.jpg



LS view: U type concrete headwall and CMP on levee slope. Vegetation debris and mud on inlet box.

Photo 3 of 3 : UCIP_FA_2019_31963_58385.jpg



LS view: inside view of CMP on levee slope. Needs cleaning and clearing.

* Location LS : Land Side N/A : Not Applicable WS : Water Side CR : Crown	** Rating A : Acceptable M : Minimally Acceptable U : Unacceptable	N : Not Inspected/Rated C : Corrected A/W : Acceptable but Monitor & Maintain	+ Issue Type Ma : Maintenance Deficiency Ob : Design & System Obsolescence En : Enforcement
--	--	---	---

**Flood Control Project Maintenance
Levee Inspections**

Maintenance Issue Types Only, Levee Inspection Report By Mile - Fall 2019

Butte County Department of Public Works

Waterway	Bank	Unit Miles	Inspection Start/End	Inspector
Unit No. 04 Sycamore and Dry Creeks	Right	2.86	10/21/2019 10/21/2019	Makar Sokol

LM Start	1.16	Rating **	C	Issue No.	17
LM End	1.22	Issue Type +	Ma	Location *	LS
Category	Earthen Levee			GPS Latitude/Longitude	
				Start	End
Item	Trim / Thin Trees			39.777128°	39.777580°
				-121.854763°	-121.855612°
DWR ID	DWR_NA0003_04_f_2015_17				
Comment Code					
T2 : Thin trees to allow visibility of the ground and room to flood fight.					
Inspector Comment					
Trees smaller than 4-inches in diameter at chest height should be removed. All other trees should be trimmed.					

No Photos

LM Start	1.35	Rating **	M	Issue No.	49
LM End	1.35	Issue Type +	Ma	Location *	
Category	Supplemental			GPS Latitude/Longitude	
				Start	End
Item	DRAFT DWR UCIP LMA Responsibility			39.778370 °	39.778370 °
				-121.857904 °	-121.857904 °
DWR ID	19290				
Comment Code					
Inspector Comment					
DS_ID:19290 FS_ID:31964 EP_NO: N/A Repair Type: Non-Urgent Crossing Status: Found UCIP Comments: Needs cleaning and clearing the culvert. FIELD_STRUCT_DESC: 24-inch corrugated metal gravity drainage pipe through the levee, 13 feet below the crown. Flap gate on the waterside (WS) end. Concrete U-shaped headwall on each end. Grouted riprap apron on the landside (LS) end. Grouted riprap spillway on the WS end. [Additional Reference(s): DWR Levee Log, 1992. USACE Sacramento O&M Manual 504, May 1965, (HLM 1.41)]. FS Date: 3/7/2014					

Photo 1 of 2 : UCIP_FA_2019_31964_58389.jpg



WS view: U type concrete headwall and CMP on levee slope. Vegetation debris and mud in outlet box. Needs cleaning and clearing.

* Location LS : Land Side N/A : Not Applicable WS : Water Side CR : Crown	** Rating A : Acceptable M : Minimally Acceptable U : Unacceptable N : Not Inspected/Rated C : Corrected A/W : Acceptable but Monitor & Maintain	+ Issue Type Ma : Maintenance Deficiency Ob : Design & System Obsolescence En : Enforcement
--	---	---

**Flood Control Project Maintenance
Levee Inspections**

Maintenance Issue Types Only, Levee Inspection Report By Mile - Fall 2019

Butte County Department of Public Works

Waterway	Bank	Unit Miles	Inspection Start/End	Inspector
Unit No. 04 Sycamore and Dry Creeks	Right	2.86	10/21/2019 10/21/2019	Makar Sokol

LM Start	1.35	Rating **	M	Issue No.	49 (cont)	
LM End	1.35	Issue Type +	Ma	Location *		
Category	Supplemental			GPS Latitude/Longitude		
				Start	End	
Item	DRAFT DWR UCIP LMA Responsibility			39.778370 °	39.778370 °	
				-121.857904 °	-121.857904 °	
DWR ID	19290					
Comment Code						
Inspector Comment						
DS_ID:19290 FS_ID:31964 EP_NO: N/A Repair Type: Non-Urgent Crossing Status: Found UCIP Comments: Needs cleaning and clearing the culvert. FIELD_STRUCT_DESC: 24-inch corrugated metal gravity drainage pipe through the levee, 13 feet below the crown. Flap gate on the waterside (WS) end. Concrete U-shaped headwall on each end. Grouted riprap apron on the landside (LS) end. Grouted riprap spillway on the WS end. [Additional Reference(s): DWR Levee Log, 1992. USACE Sacramento O&M Manual 504, May 1965, (HLM 1.41)]. FS Date: 3/7/2014						

Photo 2 of 2 : UCIP_FA_2019_31964_58388.jpg



LS view: U type concrete headwall and CMP on levee slope. Vegetation debris and mud in inlet box.

LM Start	2.00	Rating **	M	Issue No.	34
LM End	2.00	Issue Type +	Ma	Location *	LS
Category	Earthen Levee			GPS Latitude/Longitude	
				Start	End
Item	Trim / Thin Trees			39.781217 °	39.781217 °
				-121.869124 °	-121.869124 °
DWR ID	DWR_NA0003_04_s_2019_34				
Comment Code					
T2 : Thin trees to allow visibility of the ground and room to flood fight.					
Inspector Comment					

No Photos

* Location LS : Land Side N/A : Not Applicable WS : Water Side CR : Crown	** Rating A : Acceptable M : Minimally Acceptable U : Unacceptable	N : Not Inspected/Rated C : Corrected A/W : Acceptable but Monitor & Maintain	+ Issue Type Ma : Maintenance Deficiency Ob : Design & System Obsolescence En : Enforcement
--	--	---	---

**Flood Control Project Maintenance
Levee Inspections**

Maintenance Issue Types Only, Levee Inspection Report By Mile - Fall 2019

Butte County Department of Public Works

Waterway	Bank	Unit Miles	Inspection Start/End	Inspector
Unit No. 04 Sycamore and Dry Creeks	Right	2.86	10/21/2019 10/21/2019	Makar Sokol

LM Start	2.15	Rating **	M	Issue No.	50	
LM End	2.15	Issue Type +	Ma	Location *		
Category	Supplemental			GPS Latitude/Longitude		
				Start	End	
Item	DRAFT DWR UCIP LMA Responsibility			39.782777°	39.782777°	
				-121.871179°	-121.871179°	
DWR ID	19291					
Comment Code						
Inspector Comment						
DS_ID:19291 FS_ID:31965 EP_NO: N/A Repair Type: Non-Urgent Crossing Status: Found UCIP Comments: Needs cleaning and clearing the culvert. FIELD_STRUCT_DESC: 24-inch corrugated metal gravity drainage pipe through the levee, 11 feet below the crown. Flap gate on the waterside (WS) end. Concrete U-shaped headwall on each end. Grouted riprap apron on the landside (LS) end. Grouted riprap spillway on the WS end. [Additional Reference(s): DWR Levee Log, 1992. USACE Sacramento O&M Manual 504, May 1965, (HLM 2.22)]. FS Date: 3/7/2014						

LM Start	2.15	Rating **	M	Issue No.	50 (cont)
LM End	2.15	Issue Type +	Ma	Location *	

Photo 1 of 3 : UCIP_FA_2019_31965_58395.jpg



WS view: U type concrete headwall and CMP on levee slope. Vegetation debris and mud in outlet box. Needs cleaning and clearing.

Photo 2 of 3 : UCIP_FA_2019_31965_58394.jpg



LS view: U type concrete headwall and CMP on levee slope. Vegetation debris and mud in inlet box.

* Location LS : Land Side N/A : Not Applicable WS : Water Side CR : Crown	** Rating A : Acceptable M : Minimally Acceptable U : Unacceptable	N : Not Inspected/Rated C : Corrected A/W : Acceptable but Monitor & Maintain	+ Issue Type Ma : Maintenance Deficiency Ob : Design & System Obsolescence En : Enforcement
--	--	---	---

**Flood Control Project Maintenance
Levee Inspections**

Maintenance Issue Types Only, Levee Inspection Report By Mile - Fall 2019

Butte County Department of Public Works

Waterway	Bank	Unit Miles	Inspection Start/End	Inspector
Unit No. 04 Sycamore and Dry Creeks	Right	2.86	10/21/2019 10/21/2019	Makar Sokol

LM Start	2.15	Rating **	M	Issue No.	50 (cont)	
LM End	2.15	Issue Type +	Ma	Location *		
Category	Supplemental			GPS Latitude/Longitude		
				Start	End	
Item	DRAFT DWR UCIP LMA Responsibility			39.782777°	39.782777°	
				-121.871179°	-121.871179°	
DWR ID	19291					
Comment Code						
Inspector Comment						
DS_ID:19291 FS_ID:31965 EP_NO: N/A Repair Type: Non-Urgent Crossing Status: Found UCIP Comments: Needs cleaning and clearing the culvert. FIELD_STRUCT_DESC: 24-inch corrugated metal gravity drainage pipe through the levee, 11 feet below the crown. Flap gate on the waterside (WS) end. Concrete U-shaped headwall on each end. Grouted riprap apron on the landside (LS) end. Grouted riprap spillway on the WS end. [Additional Reference(s): DWR Levee Log, 1992. USACE Sacramento O&M Manual 504, May 1965, (HLM 2.22)]. FS Date: 3/7/2014						

Photo 3 of 3 : UCIP_FA_2019_31965_58393.jpg



LS view: inside view of CMP on levee slope. Needs cleaning and clearing.

LM Start	2.40	Rating **	C	Issue No.	40
LM End	2.40	Issue Type +	Ma	Location *	LS
Category	Earthen Levee			GPS Latitude/Longitude	
				Start	End
Item	Trim / Thin Trees			39.783674 °	39.783674 °
				-121.875656 °	-121.875656 °
DWR ID	DWR_NA0003_04_s_2019_40				
Comment Code					
T2 : Thin trees to allow visibility of the ground and room to flood fight.					
Inspector Comment					
Trees smaller than 4-inches in diamater at chest height should be removed.					

No Photos

* Location LS : Land Side N/A : Not Applicable WS : Water Side CR : Crown	** Rating A : Acceptable M : Minimally Acceptable U : Unacceptable	N : Not Inspected/Rated C : Corrected A/W : Acceptable but Monitor & Maintain	+ Issue Type Ma : Maintenance Deficiency Ob : Design & System Obsolescence En : Enforcement
--	--	---	---

**Flood Control Project Maintenance
Levee Inspections**

Maintenance Issue Types Only, Levee Inspection Report By Mile - Fall 2019

Butte County Department of Public Works

Waterway	Bank	Unit Miles	Inspection Start/End	Inspector
Unit No. 04 Sycamore and Dry Creeks	Right	2.86	10/21/2019 10/21/2019	Makar Sokol

LM Start	2.40	Rating **	M	Issue No.	39
LM End	2.40	Issue Type +	Ma	Location *	CR
Category	Earthen Levee			GPS Latitude/Longitude	
				Start	End
Item	Trim / Thin Trees			39.783686 °	39.783686 °
				-121.875665 °	-121.875665 °
DWR ID	DWR_NA0003_04_s_2019_39				
Comment Code					
T4 : Trim trees over roadway to at least 12 feet above ground level.					
Inspector Comment					

No Photos

LM Start	2.47	Rating **	M	Issue No.	51
LM End	2.47	Issue Type +	Ma	Location *	
Category	Supplemental			GPS Latitude/Longitude	
				Start	End
Item	DRAFT DWR UCIP LMA Responsibility			39.784244 °	39.784244 °
				-121.876810 °	-121.876810 °
DWR ID	19292				
Comment Code					
Inspector Comment					
DS_ID:19292					
FS_ID:31966					
EP_NO: N/A					
Repair Type: Non-Urgent					
Crossing Status: Found					
UCIP Comments: Needs cleaning and clearing the culvert.					
FIELD_STRUCT_DESC: 24-inch corrugated metal gravity drainage pipe through the levee, 11 feet below the crown. Flap gate on the waterside (WS) end. Concrete U-shaped headwall on each end. Grouted riprap apron on the landside (LS) end. Grouted riprap spillway on the WS end. [Additional Reference(s): DWR Levee Log, 1992. USACE Sacramento O&M Manual 504, May 1965, (HLM 2.56)].					
FS Date: 3/7/2014					

Photo 1 of 3 : UCIP_FA_2019_31966_58401.jpg



WS view: U type concrete headwall and grouted riprap spillway on levee slope.

* Location LS : Land Side N/A : Not Applicable WS : Water Side CR : Crown	** Rating A : Acceptable M : Minimally Acceptable U : Unacceptable	N : Not Inspected/Rated C : Corrected A/W : Acceptable but Monitor & Maintain	+ Issue Type Ma : Maintenance Deficiency Ob : Design & System Obsolescence En : Enforcement
--	--	---	---

**Flood Control Project Maintenance
Levee Inspections**

Maintenance Issue Types Only, Levee Inspection Report By Mile - Fall 2019

Butte County Department of Public Works

Waterway	Bank	Unit Miles	Inspection Start/End	Inspector
Unit No. 04 Sycamore and Dry Creeks	Right	2.86	10/21/2019 10/21/2019	Makar Sokol

LM Start	2.47	Rating **	M	Issue No.	51 (cont)
LM End	2.47	Issue Type +	Ma	Location *	
Category	Supplemental			GPS Latitude/Longitude	
				Start	End
Item	DRAFT DWR UCIP LMA Responsibility			39.784244 °	39.784244 °
				-121.876810 °	-121.876810 °
DWR ID	19292				
Comment Code					
Inspector Comment					
DS_ID:19292 FS_ID:31966 EP_NO: N/A Repair Type: Non-Urgent Crossing Status: Found UCIP Comments: Needs cleaning and clearing the culvert. FIELD_STRUCT_DESC: 24-inch corrugated metal gravity drainage pipe through the levee, 11 feet below the crown. Flap gate on the waterside (WS) end. Concrete U-shaped headwall on each end. Grouted riprap apron on the landside (LS) end. Grouted riprap spillway on the WS end. [Additional Reference(s): DWR Levee Log, 1992. USACE Sacramento O&M Manual 504, May 1965, (HLM 2.56)]. FS Date: 3/7/2014					

LM Start	2.47	Rating **	M	Issue No.	51 (cont)
LM End	2.47	Issue Type +	Ma	Location *	

Photo 2 of 3 : UCIP_FA_2019_31966_58400.jpg



WS view: U type concrete headwall and CMP on levee slope. Vegetation debris and mud on outlet box. Needs cleaning and clearing.

Photo 3 of 3 : UCIP_FA_2019_31966_58399.jpg



LS view: U type concrete headwall and CMP on levee slope. Vegetation debris and mud in pipe and inlet box.

* Location LS : Land Side N/A : Not Applicable WS : Water Side CR : Crown	** Rating A : Acceptable M : Minimally Acceptable U : Unacceptable	N : Not Inspected/Rated C : Corrected A/W : Acceptable but Monitor & Maintain	+ Issue Type Ma : Maintenance Deficiency Ob : Design & System Obsolescence En : Enforcement
--	--	--	---

**Flood Control Project Maintenance
Levee Inspections**

Maintenance Issue Types Only, Levee Inspection Report By Mile - Fall 2019

Butte County Department of Public Works

Waterway	Bank	Unit Miles	Inspection Start/End	Inspector
Unit No. 05 Big Chico Diversion	Left	1.85	10/21/2019 10/21/2019	Makar Sokol

LM Start	0.03	Rating **	M	Issue No.	1
LM End	0.20	Issue Type +	Ma	Location *	LS
Category	Earthen Levee			GPS Latitude/Longitude	
				Start	End
Item	Vegetation			39.763164 °	39.761860 °
				-121.790335 °	-121.792635 °
DWR ID	DWR_NA0003_05_s_2012_1				
Comment Code					
V2 : Remove the wild growth other than native grasses from the levee slopes.					
Inspector Comment					

Photo 1 of 1 : FA_2019_NA0003_69_1_20190822_00001.jpg



View of the wild growth on the landside slope. Spring 2019.

LM Start	0.08	Rating **	M	Issue No.	4
LM End	0.08	Issue Type +	Ma	Location *	WS
Category	Earthen Levee			GPS Latitude/Longitude	
				Start	End
Item	Vegetation			39.762693 °	39.762693 °
				-121.790925 °	-121.790925 °
DWR ID	DWR_NA0003_05_s_2019_4				
Comment Code					
V2 : Remove the wild growth other than native grasses from the levee slopes.					
Inspector Comment					

No Photos

LM Start	0.21	Rating **	C	Issue No.	5
LM End	0.21	Issue Type +	Ma	Location *	CR
Category	Earthen Levee			GPS Latitude/Longitude	
				Start	End
Item	Encroachments			39.761931 °	39.761931 °
				-121.792850 °	-121.792850 °
DWR ID	DWR_NA0003_05_s_2019_5				
Comment Code					
DE : Debris					
Inspector Comment					
The pile of wood should be removed from the levee crown.					

No Photos

* Location LS : Land Side N/A : Not Applicable WS : Water Side CR : Crown	** Rating A : Acceptable M : Minimally Acceptable U : Unacceptable	N : Not Inspected/Rated C : Corrected A/W : Acceptable but Monitor & Maintain	+ Issue Type Ma : Maintenance Deficiency Ob : Design & System Obsolescence En : Enforcement
--	--	---	---

**Flood Control Project Maintenance
Levee Inspections**

Maintenance Issue Types Only, Levee Inspection Report By Mile - Fall 2019

Butte County Department of Public Works

Waterway	Bank	Unit Miles	Inspection Start/End	Inspector
Unit No. 05 Big Chico Diversion	Left	1.85	10/21/2019 10/21/2019	Makar Sokol

LM Start	0.30	Rating **	M	Issue No.	3
LM End	0.30	Issue Type +	Ma	Location *	LS
Category	Earthen Levee			GPS Latitude/Longitude	
				Start	End
Item	Encroachments			39.761743 °	39.761743 °
				-121.794447 °	-121.794447 °
DWR ID	DWR_NA0003_05_f_2019_3				
Comment Code					
TR : Tree or limb					
Inspector Comment					
The fallen tree should be removed from the landside slope and toe.					

Photo 1 of 1 : FA_2019_NA0003_69_3_20191028_00006.jpg



View of the fallen tree on the landside slope. Fall 2019.

LM Start	0.38	Rating **	M	Issue No.	8
LM End	0.41	Issue Type +	Ma	Location *	LS
Category	Earthen Levee			GPS Latitude/Longitude	
				Start	End
Item	Vegetation			39.761447°	39.761179°
				-121.795898°	-121.796344°
DWR ID	DWR_NA0003_05_f_2019_8				
Comment Code					
V2 : Remove the wild growth other than native grasses from the levee slopes.					
Inspector Comment					

No Photos

LM Start	0.42	Rating **	M	Issue No.	11
LM End	0.42	Issue Type +	Ma	Location *	LS
Category	Earthen Levee			GPS Latitude/Longitude	
				Start	End
Item	Slope Stability			39.761077 °	39.761077 °
				-121.796576 °	-121.796576 °
DWR ID	DWR_NA0003_05_f_2016_11				
Comment Code					
S2 : Repair the levee slope damaged by foot traffic and prevent access where possible.					
Inspector Comment					

Photo 1 of 1 : FA_2019_NA0003_69_11_20190822_00002.jpg



View of the damaged slope by foot traffic.

* Location LS : Land Side N/A : Not Applicable WS : Water Side CR : Crown	** Rating A : Acceptable M : Minimally Acceptable U : Unacceptable	N : Not Inspected/Rated C : Corrected A/W : Acceptable but Monitor & Maintain	+ Issue Type Ma : Maintenance Deficiency Ob : Design & System Obsolescence En : Enforcement
--	--	---	---

**Flood Control Project Maintenance
Levee Inspections**

Maintenance Issue Types Only, Levee Inspection Report By Mile - Fall 2019

Butte County Department of Public Works

Waterway	Bank	Unit Miles	Inspection Start/End	Inspector
Unit No. 05 Big Chico Diversion	Left	1.85	10/21/2019 10/21/2019	Makar Sokol

LM Start	0.89	Rating **	A/W	Issue No.	6
LM End	0.89	Issue Type +	Ma	Location *	LS
Category	Earthen Levee			GPS Latitude/Longitude	
				Start	End
Item	Vegetation			39.764397 °	39.764397 °
				-121.803335 °	-121.803335 °
DWR ID	DWR_NA0003_05_f_2014_6				
Comment Code					
V4 : Elderberries are blocking visibility and flood fight capability.					
Inspector Comment					
Trim branches 1-inch in diameter or less to keep bush from becoming an issue.					

No Photos

LM Start	1.19	Rating **	M	Issue No.	12
LM End	1.19	Issue Type +	Ma	Location *	LS
Category	Earthen Levee			GPS Latitude/Longitude	
				Start	End
Item	Slope Stability			39.767958 °	39.767958 °
				-121.806326 °	-121.806326 °
DWR ID	DWR_NA0003_05_s_2019_12				
Comment Code					
S2 : Repair the levee slope damaged by foot traffic and prevent access where possible.					
Inspector Comment					

No Photos

LM Start	1.25	Rating **	M	Issue No.	13
LM End	1.25	Issue Type +	Ma	Location *	LS
Category	Earthen Levee			GPS Latitude/Longitude	
				Start	End
Item	Slope Stability			39.768621 °	39.768621 °
				-121.807052 °	-121.807052 °
DWR ID	DWR_NA0003_05_f_2016_13				
Comment Code					
S2 : Repair the levee slope damaged by foot traffic and prevent access where possible.					
Inspector Comment					

Photo 1 of 1 : FA_2019_NA0003_69_13_20190822_00003.jpg



View of the damaged slope by foot traffic.

* Location LS : Land Side N/A : Not Applicable WS : Water Side CR : Crown	** Rating A : Acceptable M : Minimally Acceptable U : Unacceptable	N : Not Inspected/Rated C : Corrected A/W : Acceptable but Monitor & Maintain	+ Issue Type Ma : Maintenance Deficiency Ob : Design & System Obsolescence En : Enforcement
--	--	---	---

**Flood Control Project Maintenance
Levee Inspections**

Maintenance Issue Types Only, Levee Inspection Report By Mile - Fall 2019

Butte County Department of Public Works

Waterway	Bank	Unit Miles	Inspection Start/End	Inspector
Unit No. 05 Big Chico Diversion	Left	1.85	10/21/2019 10/21/2019	Makar Sokol

LM Start	1.49	Rating **	A/W	Issue No.	17
LM End	1.49	Issue Type +	Ma	Location *	WS
Category	Earthen Levee		GPS Latitude/Longitude		
			Start	End	
Item	Erosion / Bank Caving		39.771379°	39.771379°	
			-121.809849°	-121.809849°	
DWR ID	DWR_NA0003_05_s_2019_17				
Comment Code					
E1 : Note and monitor erosion site.					
Inspector Comment					

No Photos

* Location LS : Land Side N/A : Not Applicable WS : Water Side CR : Crown	** Rating A : Acceptable M : Minimally Acceptable U : Unacceptable	N : Not Inspected/Rated C : Corrected A/W : Acceptable but Monitor & Maintain	+ Issue Type Ma : Maintenance Deficiency Ob : Design & System Obsolescence En : Enforcement
--	--	---	---