

**Flood Control Project Maintenance
Levee Inspections**

Maintenance Issue Types Only, Levee Inspection Report By Mile - Fall 2018

Butte County Department of Public Works

Waterway	Bank	Unit Miles	Inspection Start/End	Inspector
Unit No. 01 Mud Creek	Right	6.80	09/18/2018 09/18/2018	Bob Duffey

LM Start		Rating **	A	Issue No.	6
LM End		Issue Type +	Ma	Location *	N/A
Category	Earthen Levee			GPS Latitude/Longitude	
				Start	End
Item	Emergency Supplies & Equipment			°	°
				°	°
DWR ID	DWR_NA0003_01_s_2013_6				
Comment Code					
Inspector Comment					
LMA has flood fight supplies & equipment.					

No Photos

LM Start		Rating **	A	Issue No.	10
LM End		Issue Type +	Ma	Location *	N/A
Category	Earthen Levee			GPS Latitude/Longitude	
				Start	End
Item	Flood Preparedness & Training			°	°
				°	°
DWR ID	DWR_NA0003_01_s_2013_10				
Comment Code					
Inspector Comment					
The LMA completed flood fight training in 2016.					

No Photos

LM Start		Rating **	A	Issue No.	58
LM End		Issue Type +	Ma	Location *	N/A
Category	Earthen Levee			GPS Latitude/Longitude	
				Start	End
Item	Operations & Maintenance Manuals			°	°
				°	°
DWR ID	DWR_NA0003_01_f_2017_58				
Comment Code					
Inspector Comment					
The LMA has O&M Manuals.					

No Photos

* Location LS : Land Side N/A : Not Applicable WS : Water Side CR : Crown	** Rating A : Acceptable M : Minimally Acceptable U : Unacceptable	N : Not Inspected/Rated C : Corrected A/W : Acceptable but Monitor & Maintain	+ Issue Type Ma : Maintenance Deficiency Ob : Design & System Obsolescence En : Enforcement
--	--	---	---

**Flood Control Project Maintenance
Levee Inspections**

Maintenance Issue Types Only, Levee Inspection Report By Mile - Fall 2018

Butte County Department of Public Works

Waterway	Bank	Unit Miles	Inspection Start/End	Inspector
Unit No. 01 Mud Creek	Right	6.80	09/18/2018 09/18/2018	Bob Duffey

LM Start	0.25	Rating **	A/W	Issue No.	59
LM End	0.25	Issue Type +	Ma	Location *	
Category	Supplemental			GPS Latitude/Longitude	
				Start	End
Item	DWR UCIP LMA Responsibility			39.729219 °	39.729219 °
				-121.933437 °	-121.933437 °
DWR ID	19209				
Comment Code					
Inspector Comment					
FS_ID:29705 DS_ID:19209 EP_NO: N/A Repair Type: No Action Needed Crossing Status: Found UCIP Comments: Looks cleaned recently. FIELD_STRUCT_DESC: 24-inch corrugated metal gravity drainage pipe through the levee, 12.5 feet below the crown. Flap gate on the waterside (WS) end. Concrete U-shaped headwall on each end. Grouted riprap apron on the landside (LS) end. Grouted riprap spillway on the WS end. [Additional Reference(s): DWR Levee Log, 1992. USACE Sacramento O&M Manual 504, May 1965, (HLM 0.26)]. FS Date: 2/20/2014					

LM Start	0.25	Rating **	A/W	Issue No.	59 (cont)
LM End	0.25	Issue Type +	Ma	Location *	

Photo 1 of 3 : UCIP_FA_2018_29705_54924.jpg



WS view: U typed concrete headwall, flapgate on levee slope.

Photo 2 of 3 : UCIP_FA_2018_29705_54923.jpg



LS view: U typed concrete headwall, CMP on levee slope.

* Location LS : Land Side N/A : Not Applicable WS : Water Side CR : Crown	** Rating A : Acceptable M : Minimally Acceptable U : Unacceptable	N : Not Inspected/Rated C : Corrected A/W : Acceptable but Monitor & Maintain	+ Issue Type Ma : Maintenance Deficiency Ob : Design & System Obsolescence En : Enforcement
--	--	---	---

**Flood Control Project Maintenance
Levee Inspections**

Maintenance Issue Types Only, Levee Inspection Report By Mile - Fall 2018

Butte County Department of Public Works

Waterway	Bank	Unit Miles	Inspection Start/End	Inspector
Unit No. 01 Mud Creek	Right	6.80	09/18/2018 09/18/2018	Bob Duffey

LM Start	0.25	Rating **	A/W	Issue No.	59 (cont)	
LM End	0.25	Issue Type +	Ma	Location *		
Category	Supplemental			GPS Latitude/Longitude		
				Start		End
Item	DWR UCIP LMA Responsibility			39.729219 °		39.729219 °
				-121.933437 °		-121.933437 °
DWR ID	19209					
Comment Code						
Inspector Comment						
FS_ID:29705 DS_ID:19209 EP_NO: N/A Repair Type: No Action Needed Crossing Status: Found UCIP Comments: Looks cleaned recently. FIELD_STRUCT_DESC: 24-inch corrugated metal gravity drainage pipe through the levee, 12.5 feet below the crown. Flap gate on the waterside (WS) end. Concrete U-shaped headwall on each end. Grouted riprap apron on the landside (LS) end. Grouted riprap spillway on the WS end. [Additional Reference(s): DWR Levee Log, 1992. USACE Sacramento O&M Manual 504, May 1965, (HLM 0.26)]. FS Date: 2/20/2014						

Photo 3 of 3 : UCIP_FA_2018_29705_54922.jpg



LS view: inside view of CMP on levee slope. Looks clean and clear.

LM Start	1.00	Rating **	M	Issue No.	60	
LM End	1.00	Issue Type +	Ma	Location *		
Category	Supplemental			GPS Latitude/Longitude		
				Start		End
Item	DWR UCIP LMA Responsibility			39.739268 °	39.739268 °	
				-121.931891 °	-121.931891 °	
DWR ID	19211					
Comment Code						
Inspector Comment						
FS_ID:32044 DS_ID:19211 EP_NO: N/A Repair Type: Non-Urgent Crossing Status: Found UCIP Comments: Vegetation debris on waterside. Needs clearing and cleaning. FIELD_STRUCT_DESC: 24-inch corrugated metal gravity drainage pipe through the levee, 12 feet below the crown. Flap gate on the waterside (WS) end. Concrete U-shaped headwall on each end. Grouted riprap apron on the landside (LS) end. Grouted riprap spillway on the WS end. [Additional Reference(s): DWR Levee Log, 1992. USACE Sacramento O&M Manual 504, May 1965, (HLM 1.03)]. FS Date: 2/20/2014						

Photo 1 of 3 : UCIP_FA_2018_32044_58543.jpg



WS view: U typed concrete headwall, pipe, and flapgate on levee slope.

* Location LS : Land Side N/A : Not Applicable WS : Water Side CR : Crown	** Rating A : Acceptable M : Minimally Acceptable U : Unacceptable	N : Not Inspected/Rated C : Corrected A/W : Acceptable but Monitor & Maintain	+ Issue Type Ma : Maintenance Deficiency Ob : Design & System Obsolescence En : Enforcement
--	--	---	---

**Flood Control Project Maintenance
Levee Inspections**

Maintenance Issue Types Only, Levee Inspection Report By Mile - Fall 2018

Butte County Department of Public Works

Waterway	Bank	Unit Miles	Inspection Start/End	Inspector
Unit No. 01 Mud Creek	Right	6.80	09/18/2018 09/18/2018	Bob Duffey

LM Start	1.00	Rating **	M	Issue No.	60 (cont)	
LM End	1.00	Issue Type +	Ma	Location *		
Category	Supplemental			GPS Latitude/Longitude		
				Start		End
Item	DWR UCIP LMA Responsibility			39.739268 °	39.739268 °	
				-121.931891 °	-121.931891 °	
DWR ID	19211					
Comment Code						
Inspector Comment						
FS_ID:32044 DS_ID:19211 EP_NO: N/A Repair Type: Non-Urgent Crossing Status: Found UCIP Comments: Vegetation debris on waterside. Needs clearing and cleaning. FIELD_STRUCT_DESC: 24-inch corrugated metal gravity drainage pipe through the levee, 12 feet below the crown. Flap gate on the waterside (WS) end. Concrete U-shaped headwall on each end. Grouted riprap apron on the landside (LS) end. Grouted riprap spillway on the WS end. [Additional Reference(s): DWR Levee Log, 1992. USACE Sacramento O&M Manual 504, May 1965, (HLM 1.03)]. FS Date: 2/20/2014						

LM Start	1.00	Rating **	M	Issue No.	60 (cont)
LM End	1.00	Issue Type +	Ma	Location *	

Photo 2 of 3 : UCIP_FA_2018_32044_58542.jpg



WS view: vegetation debris blocking outlet.

Photo 3 of 3 : UCIP_FA_2018_32044_58541.jpg



LS view: U typed concrete headwall and CMP on levee slope.

* Location LS : Land Side N/A : Not Applicable WS : Water Side CR : Crown	** Rating A : Acceptable M : Minimally Acceptable U : Unacceptable	N : Not Inspected/Rated C : Corrected A/W : Acceptable but Monitor & Maintain	+ Issue Type Ma : Maintenance Deficiency Ob : Design & System Obsolescence En : Enforcement
--	--	---	---

**Flood Control Project Maintenance
Levee Inspections**

Maintenance Issue Types Only, Levee Inspection Report By Mile - Fall 2018

Butte County Department of Public Works

Waterway	Bank	Unit Miles	Inspection Start/End	Inspector
Unit No. 01 Mud Creek	Right	6.80	09/18/2018 09/18/2018	Bob Duffey

LM Start	1.06	Rating **	A	Issue No.	26
LM End	1.06	Issue Type +	Ma	Location *	LS
Category	Earthen Levee			GPS Latitude/Longitude	
				Start	End
Item	Vegetation			39.739590 °	39.739590 °
				-121.930827 °	-121.930827 °
DWR ID	DWR_NA0003_01_f_2018_26				
Comment Code					
V1 : Control annual grass and weeds on the levee slopes and easements.					
Inspector Comment					
There is no vegetation on both slopes.					

Photo 1 of 1 : FA_2018_NA0003_64_26_20181001_00065.jpg



View of the levee with no vegetation on both slopes.

LM Start	1.90	Rating **	A/W	Issue No.	61	
LM End	1.90	Issue Type +	Ma	Location *		
Category	Supplemental			GPS Latitude/Longitude		
				Start	End	
Item	DWR UCIP LMA Responsibility			39.747563°	39.747563°	
				-121.920170°	-121.920170°	
DWR ID	19212					
Comment Code						
Inspector Comment						
FS_ID:50142 DS_ID:19212 EP_NO: N/A Repair Type: No Action Needed Crossing Status: Found UCIP Comments: 08/29/2016: Shawn Bates of NA0003 has cleared the LS and WS of debris and blockage; WS gate functions properly now. Crossing has been downgraded from Urgent to No Action Needed. (K. Fazel - UCIP)08/11/2016: Same as last inspection. (K. Fazel - UCIP)02/20/2014: No riprap spillway on waterside. Needs cleaning and clearing of debris. Flap gate was not fully closed. (P. Amatya - UCIP) FIELD_STRUCT_DESC: 24-inch corrugated metal gravity drainage pipe through the levee, 13 feet below the crown. Flap gate on the waterside (WS) end. Concrete U-shaped headwall on each end. Grouted riprap apron on the landside (LS) end. Grouted riprap spillway on the WS end. [Additional Reference(s): DWR Levee Log, 2005. USACE Sacramento O&M Manual 504, May 1965, (HLM 1.95)]. FS Date: 8/11/2016						

Photo 1 of 3 : UCIP_FA_2018_50142_55886.jpg



WS view: U type concrete headwall, flapgate on levee slope. Gate was not fully closed.

* Location LS : Land Side N/A : Not Applicable WS : Water Side CR : Crown	** Rating A : Acceptable M : Minimally Acceptable U : Unacceptable N : Not Inspected/Rated C : Corrected A/W : Acceptable but Monitor & Maintain	+ Issue Type Ma : Maintenance Deficiency Ob : Design & System Obsolescence En : Enforcement
--	---	---

**Flood Control Project Maintenance
Levee Inspections**

Maintenance Issue Types Only, Levee Inspection Report By Mile - Fall 2018

Butte County Department of Public Works

Waterway	Bank	Unit Miles	Inspection Start/End	Inspector
Unit No. 01 Mud Creek	Right	6.80	09/18/2018 09/18/2018	Bob Duffey

LM Start	1.90	Rating **	A/W	Issue No.	61 (cont)
LM End	1.90	Issue Type +	Ma	Location *	
Category	Supplemental			GPS Latitude/Longitude	
				Start	End
Item	DWR UCIP LMA Responsibility			39.747563 °	39.747563 °
				-121.920170 °	-121.920170 °
DWR ID	19212				

Comment Code

Inspector Comment

FS_ID:50142

DS_ID:19212

EP_NO: N/A

Repair Type: No Action Needed

Crossing Status: Found

UCIP Comments: 08/29/2016: Shawn Bates of NA0003 has cleared the

LS and WS of debris and blockage; WS gate functions properly now.

Crossing has been downgraded from Urgent to No Action Needed. (K.

Fazel - UCIP)08/11/2016: Same as last inspection. (K. Fazel -

UCIP)02/20/2014:No riprap spillway on waterside. Needs cleaning

and clearing of debris. Flap gate was not fully closed. (P. Amatya -

UCIP)

FIELD_STRUCT_DESC: 24-inch corrugated metal gravity drainage pipe

through the levee, 13 feet below the crown. Flap gate on the waterside

(WS) end. Concrete U-shaped headwall on each end. Grouted riprap

apron on the landside (LS) end. Grouted riprap spillway on the WS end.

[Additional Reference(s): DWR Levee Log, 2005. USACE Sacramento

O&M Manual 504, May 1965, (HLM 1.95)].

FS Date: 8/11/2016

LM Start	1.90	Rating **	A/W	Issue No.	61 (cont)
LM End	1.90	Issue Type +	Ma	Location *	

Photo 2 of 3 : UCIP_FA_2018_50142_55885.jpg



LS view: U type concrete headwall and CMP on levee slope. Vegetation debris blocking inlet.

Photo 3 of 3 : UCIP_FA_2018_50142_55884.jpg



LS view: inside view of CMP on levee slope. Needs cleaning and clearing.

* Location LS : Land Side N/A : Not Applicable WS : Water Side CR : Crown		** Rating A : Acceptable M : Minimally Acceptable U : Unacceptable N : Not Inspected/Rated C : Corrected A/W : Acceptable but Monitor & Maintain		+ Issue Type Ma : Maintenance Deficiency Ob : Design & System Obsolescence En : Enforcement	
--	--	---	--	---	--

**Flood Control Project Maintenance
Levee Inspections**

Maintenance Issue Types Only, Levee Inspection Report By Mile - Fall 2018

Butte County Department of Public Works

Waterway	Bank	Unit Miles	Inspection Start/End	Inspector
Unit No. 01 Mud Creek	Right	6.80	09/18/2018 09/18/2018	Bob Duffey

LM Start	3.03	Rating **	M	Issue No.	63
LM End	3.03	Issue Type +	Ma	Location *	
Category	Supplemental			GPS Latitude/Longitude	
				Start	End
Item	DWR UCIP LMA Responsibility			39.761224 °	39.761224 °
				-121.911108 °	-121.911108 °
DWR ID	19216				
Comment Code					
Inspector Comment					
FS_ID:30294 DS_ID:19216 EP_NO: N/A Repair Type: Non-Urgent Crossing Status: Found UCIP Comments: Inlet and outlet needs cleaning and clearing of debris. FIELD_STRUCT_DESC: 24-inch corrugated metal gravity drainage pipe through the levee, 8.5 feet below the crown. Flap gate on the waterside (WS) end. Concrete U-shaped headwall on each end. Grouted riprap apron on the landside (LS) end. Grouted riprap spillway on the WS end. [Additional Reference(s): DWR Levee Log, 1992. USACE Sacramento O&M Manual 504, May 1965, (HLM 3.11)]. FS Date: 2/20/2014					

Photo 1 of 2 : UCIP_FA_2018_30294_55704.jpg



WS view: U type concrete headwall, flapgate on levee slope.

LM Start	3.03	Rating **	M	Issue No.	63 (cont)
LM End	3.03	Issue Type +	Ma	Location *	

Photo 2 of 2 : UCIP_FA_2018_30294_55703.jpg



LS view: U type concrete headwall and CMP on levee slope. Debris blocking the inlet pipe.

* Location LS : Land Side N/A : Not Applicable WS : Water Side CR : Crown	** Rating A : Acceptable M : Minimally Acceptable U : Unacceptable	N : Not Inspected/Rated C : Corrected A/W : Acceptable but Monitor & Maintain	+ Issue Type Ma : Maintenance Deficiency Ob : Design & System Obsolescence En : Enforcement
--	--	---	---

**Flood Control Project Maintenance
Levee Inspections**

Maintenance Issue Types Only, Levee Inspection Report By Mile - Fall 2018

Butte County Department of Public Works

Waterway	Bank	Unit Miles	Inspection Start/End	Inspector
Unit No. 01 Mud Creek	Right	6.80	09/18/2018 09/18/2018	Bob Duffey

LM Start	3.18	Rating **	M	Issue No.	64
LM End	3.18	Issue Type +	Ma	Location *	
Category	Supplemental			GPS Latitude/Longitude	
				Start	End
Item	DWR UCIP LMA Responsibility			39.763067°	39.763067°
				-121.909608°	-121.909608°
DWR ID	19217				
Comment Code					
Inspector Comment					
FS_ID:30295 DS_ID:19217 EP_NO: N/A Repair Type: Non-Urgent Crossing Status: Found UCIP Comments: It needs cleaning and clearing in inlet and outlet ends. FIELD_STRUCT_DESC: 24-inch corrugated metal gravity drainage pipe through the levee, 9 feet below the crown. Flap gate on the waterside (WS) end. Concrete U-shaped headwall on each end. Grouted riprap apron on the landside (LS) end. Grouted riprap spillway on the WS end. [Additional Reference(s): DWR Levee Log, 1992. USACE Sacramento O&M Manual 504, May 1965, (HLM 3.27)]. FS Date: 2/20/2014					

LM Start	3.18	Rating **	M	Issue No.	64 (cont)
LM End	3.18	Issue Type +	Ma	Location *	

Photo 1 of 2 : UCIP_FA_2018_30295_55706.jpg



WS view: U type concrete headwall, flapgate on levee slope. Vegetation debris blocking the outlet.

Photo 2 of 2 : UCIP_FA_2018_30295_55705.jpg



LS view: U type concrete headwall and CMP on levee slope. Vegetation debris blocking the inlet.

* Location LS : Land Side N/A : Not Applicable WS : Water Side CR : Crown	** Rating A : Acceptable M : Minimally Acceptable U : Unacceptable	N : Not Inspected/Rated C : Corrected A/W : Acceptable but Monitor & Maintain	+ Issue Type Ma : Maintenance Deficiency Ob : Design & System Obsolescence En : Enforcement
--	--	---	---

**Flood Control Project Maintenance
Levee Inspections**

Maintenance Issue Types Only, Levee Inspection Report By Mile - Fall 2018

Butte County Department of Public Works

Waterway	Bank	Unit Miles	Inspection Start/End	Inspector
Unit No. 01 Mud Creek	Right	6.80	09/18/2018 09/18/2018	Bob Duffey

LM Start	3.39	Rating **	M	Issue No.	65
LM End	3.39	Issue Type +	Ma	Location *	
Category	Supplemental			GPS Latitude/Longitude	
				Start	End
Item	DWR UCIP LMA Responsibility			39.765440 °	39.765440 °
				-121.907261 °	-121.907261 °
DWR ID	19218				
Comment Code					
Inspector Comment					
FS_ID:30310 DS_ID:19218 EP_NO: N/A Repair Type: Non-Urgent Crossing Status: Found UCIP Comments: Needs cleaning and clearing of debris. FIELD_STRUCT_DESC: 24-inch corrugated metal gravity drainage pipe through the levee, 10 feet below the crown. Flap gate on the waterside (WS) end. Concrete U-shaped headwall on each end. Grouted riprap apron on the landside (LS) end. Grouted riprap spillway on the WS end. [Additional Reference(s): DWR Levee Log, 1992. USACE Sacramento O&M Manual 504, May 1965, (HLM 3.48)]. FS Date: 2/20/2014					

LM Start	3.39	Rating **	M	Issue No.	65 (cont)
LM End	3.39	Issue Type +	Ma	Location *	

Photo 1 of 3 : UCIP_FA_2018_30310_55741.jpg



WS view: U type concrete headwall, pipe, and flapgate on levee slope. Vegetation debris blocking outlet.

Photo 2 of 3 : UCIP_FA_2018_30310_55740.jpg



LS view: U type concrete headwall and CMP on levee slope.

* Location LS : Land Side N/A : Not Applicable WS : Water Side CR : Crown	** Rating A : Acceptable M : Minimally Acceptable U : Unacceptable	N : Not Inspected/Rated C : Corrected A/W : Acceptable but Monitor & Maintain	+ Issue Type Ma : Maintenance Deficiency Ob : Design & System Obsolescence En : Enforcement
--	--	---	---

**Flood Control Project Maintenance
Levee Inspections**

Maintenance Issue Types Only, Levee Inspection Report By Mile - Fall 2018

Butte County Department of Public Works

Waterway	Bank	Unit Miles	Inspection Start/End	Inspector
Unit No. 01 Mud Creek	Right	6.80	09/18/2018 09/18/2018	Bob Duffey

LM Start	3.39	Rating **	M	Issue No.	65 (cont)
LM End	3.39	Issue Type +	Ma	Location *	
Category	Supplemental			GPS Latitude/Longitude	
				Start	End
Item	DWR UCIP LMA Responsibility			39.765440 °	39.765440 °
				-121.907261 °	-121.907261 °
DWR ID	19218				
Comment Code					
Inspector Comment					
FS_ID:30310 DS_ID:19218 EP_NO: N/A Repair Type: Non-Urgent Crossing Status: Found UCIP Comments: Needs cleaning and clearing of debris. FIELD_STRUCT_DESC: 24-inch corrugated metal gravity drainage pipe through the levee, 10 feet below the crown. Flap gate on the waterside (WS) end. Concrete U-shaped headwall on each end. Grouted riprap apron on the landside (LS) end. Grouted riprap spillway on the WS end. [Additional Reference(s): DWR Levee Log, 1992. USACE Sacramento O&M Manual 504, May 1965, (HLM 3.48)]. FS Date: 2/20/2014					

Photo 3 of 3 : UCIP_FA_2018_30310_55739.jpg



LS view: inside view of CMP on levee slope. Needs cleaning and clearing.

LM Start	3.89	Rating **	M	Issue No.	32
LM End	3.89	Issue Type +	Ma	Location *	LS
Category	Earthen Levee			GPS Latitude/Longitude	
				Start	End
Item	Encroachments			39.770395 °	39.770395 °
				-121.901305 °	-121.901305 °
DWR ID	DWR_NA0003_01_s_2018_32				
Comment Code					
PR : Prunings					
Inspector Comment					
Remove the prunings from the landside toe					

Photo 1 of 1 : FA_2018_NA0003_64_32_20180905_00014.jpg



View of the prunings along the landside toe.

* Location LS : Land Side N/A : Not Applicable WS : Water Side CR : Crown	** Rating A : Acceptable M : Minimally Acceptable U : Unacceptable	N : Not Inspected/Rated C : Corrected A/W : Acceptable but Monitor & Maintain	+ Issue Type Ma : Maintenance Deficiency Ob : Design & System Obsolescence En : Enforcement
--	--	---	---

**Flood Control Project Maintenance
Levee Inspections**

Maintenance Issue Types Only, Levee Inspection Report By Mile - Fall 2018

Butte County Department of Public Works

Waterway	Bank	Unit Miles	Inspection Start/End	Inspector
Unit No. 01 Mud Creek	Right	6.80	09/18/2018 09/18/2018	Bob Duffey

LM Start	3.97	Rating **	M	Issue No.	66	
LM End	3.97	Issue Type +	Ma	Location *		
Category	Supplemental			GPS Latitude/Longitude		
				Start		End
Item	DWR UCIP LMA Responsibility			39.771293 °		39.771293 °
				-121.900247 °		-121.900247 °
DWR ID	19219					
Comment Code						
Inspector Comment						
FS_ID:30311						
DS_ID:19219						
EP_NO: N/A						
Repair Type: Non-Urgent						
Crossing Status: Found						
UCIP Comments: Needs cleaning and clearing of debris in both ends of the pipe.						
FIELD_STRUCT_DESC: 24-inch corrugated metal gravity drainage pipe through the levee, 9 feet below the crown. Flap gate on the waterside (WS) end. Concrete U-shaped headwall on each end. Grouted riprap apron on the landside (LS) end. Grouted riprap spillway on the WS end. [Additional Reference(s): DWR Levee Log, 1992. USACE Sacramento O&M Manual 504, May 1965, (HLM 4.08)].						
FS Date: 2/20/2014						

LM Start	3.97	Rating **	M	Issue No.	66 (cont)
LM End	3.97	Issue Type +	Ma	Location *	

Photo 1 of 2 : UCIP_FA_2018_30311_55743.jpg



WS view: U type concrete headwall, pipe, and flapgate on levee slope. Vegetation debris blocking outlet.

Photo 2 of 2 : UCIP_FA_2018_30311_55742.jpg



LS view: U type concrete headwall and CMP on levee slope.

* Location LS : Land Side N/A : Not Applicable WS : Water Side CR : Crown	** Rating A : Acceptable M : Minimally Acceptable U : Unacceptable	N : Not Inspected/Rated C : Corrected A/W : Acceptable but Monitor & Maintain	+ Issue Type Ma : Maintenance Deficiency Ob : Design & System Obsolescence En : Enforcement
--	--	---	---

**Flood Control Project Maintenance
Levee Inspections**

Maintenance Issue Types Only, Levee Inspection Report By Mile - Fall 2018

Butte County Department of Public Works

Waterway	Bank	Unit Miles	Inspection Start/End	Inspector
Unit No. 01 Mud Creek	Right	6.80	09/18/2018 09/18/2018	Bob Duffey

LM Start	4.03	Rating **	M	Issue No.	51
LM End	4.03	Issue Type +	Ma	Location *	LS
Category	Earthen Levee			GPS Latitude/Longitude	
				Start	End
Item	Animal Control			39.771877 °	39.771877 °
				-121.899441 °	-121.899441 °
DWR ID	DWR_NA0003_01_f_2016_51				
Comment Code					
A1 : Exterminate rodents and backfill and compact or grout burrows.					
Inspector Comment					

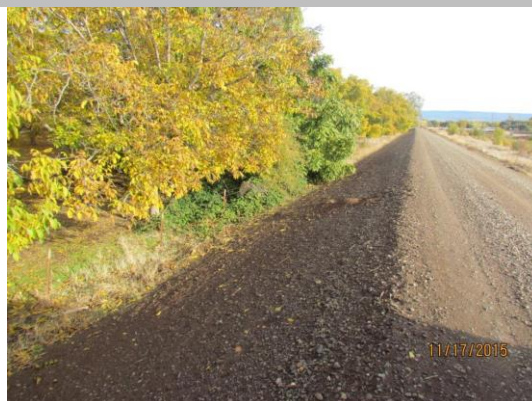
Photo 1 of 1 : FA_2018_NA0003_64_51_20180905_00028.jpg



View of the rodent holes along the landside slope.

LM Start	4.27	Rating **	M	Issue No.	33
LM End	4.27	Issue Type +	Ma	Location *	LS
Category	Earthen Levee			GPS Latitude/Longitude	
				Start	End
Item	Animal Control			39.773398 °	39.773398 °
				-121.895765 °	-121.895765 °
DWR ID	DWR_NA0003_01_f_2018_33				
Comment Code					
A1 : Exterminate rodents and backfill and compact or grout burrows.					
Inspector Comment					
Repair the rodent holes along the landside slope.					

Photo 1 of 1 : FA_2018_NA0003_64_33_20180905_00015.jpg



View of the rodent holes along the landside slope.

LM Start	4.30	Rating **	M	Issue No.	54
LM End	4.30	Issue Type +	Ma	Location *	WS
Category	Earthen Levee			GPS Latitude/Longitude	
				Start	End
Item	Erosion / Bank Caving			39.773834 °	39.773834 °
				-121.895443 °	-121.895443 °
DWR ID	DWR_NA0003_01_f_2018_54				
Comment Code					
E2 : Schedule repair of erosion site prior to the next inspection.					
Inspector Comment					
Two large erosion scallops at the toe. USACE Erosion site MUD 4.4 R					

No Photos

* Location LS : Land Side N/A : Not Applicable WS : Water Side CR : Crown	** Rating A : Acceptable M : Minimally Acceptable U : Unacceptable	N : Not Inspected/Rated C : Corrected A/W : Acceptable but Monitor & Maintain	+ Issue Type Ma : Maintenance Deficiency Ob : Design & System Obsolescence En : Enforcement
--	--	--	---

**Flood Control Project Maintenance
Levee Inspections**

Maintenance Issue Types Only, Levee Inspection Report By Mile - Fall 2018

Butte County Department of Public Works

Waterway	Bank	Unit Miles	Inspection Start/End	Inspector
Unit No. 01 Mud Creek	Right	6.80	09/18/2018 09/18/2018	Bob Duffey

LM Start	4.32	Rating **	A/W	Issue No.	5
LM End	4.26	Issue Type +	Ma	Location *	WS
Category	Supplemental			GPS Latitude/Longitude	
				Start	End
Item	2017 USACE Erosion Survey, DRAFT			39.773969 °	39.773257 °
				-121.895078 °	-121.895618 °
DWR ID	DWR_ST0010_02_f_2022_9				
Comment Code					
Inspector Comment					
2017 Site ID: MUD 4.4 R					
Status: Eroding					
2017 Field Notes: Erosion scarps have increased since last inspection in 2011.					
Site History: 2011 - Two large erosion scallops at the toe from a rotational failure. Deep cracks along the slope indicate the potential for further failures.					

No Photos

LM Start	4.45	Rating **	C	Issue No.	53
LM End	4.45	Issue Type +	Ma	Location *	LS
Category	Earthen Levee			GPS Latitude/Longitude	
				Start	End
Item	Trim / Thin Trees			39.775789 °	39.775789 °
				-121.894048 °	-121.894048 °
DWR ID	DWR_NA0003_01_f_2016_53				
Comment Code					
T2 : Thin trees to allow visibility of the ground and room to flood fight.					
Inspector Comment					
Butte Co. trimmed the trees to allow visibility.					

No Photos

* Location LS : Land Side N/A : Not Applicable WS : Water Side CR : Crown	** Rating A : Acceptable M : Minimally Acceptable U : Unacceptable	N : Not Inspected/Rated C : Corrected A/W : Acceptable but Monitor & Maintain	+ Issue Type Ma : Maintenance Deficiency Ob : Design & System Obsolescence En : Enforcement
--	--	---	---

**Flood Control Project Maintenance
Levee Inspections**

Maintenance Issue Types Only, Levee Inspection Report By Mile - Fall 2018

Butte County Department of Public Works

Waterway	Bank	Unit Miles	Inspection Start/End	Inspector
Unit No. 01 Mud Creek	Right	6.80	09/18/2018 09/18/2018	Bob Duffey

LM Start	4.46	Rating **	M	Issue No.	67
LM End	4.46	Issue Type +	Ma	Location *	
Category	Supplemental			GPS Latitude/Longitude	
				Start	End
Item	DWR UCIP LMA Responsibility			39.775905 °	39.775905 °
				-121.893980 °	-121.893980 °
DWR ID	19220				
Comment Code					
Inspector Comment					
FS_ID:30312 DS_ID:19220 EP_NO: N/A Repair Type: Non-Urgent Crossing Status: Found UCIP Comments: Needs cleaning and clearing of debris. FIELD_STRUCT_DESC: 24-inch corrugated metal gravity drainage pipe through the levee, 13 feet below the crown. Flap gate on the waterside (WS) end. Concrete U-shaped headwall on each end. Grouted riprap apron on the landside (LS) end. Grouted riprap spillway on the WS end. [Additional Reference(s): DWR Levee Log, 1992. USACE Sacramento O&M Manual 504, May 1965, (HLM 4.58)]. FS Date: 2/20/2014					

LM Start	4.46	Rating **	M	Issue No.	67 (cont)
LM End	4.46	Issue Type +	Ma	Location *	

Photo 1 of 2 : UCIP_FA_2018_30312_55745.jpg



WS view: U type concrete headwall, pipe, and flapgate on levee slope. Vegetation debris blocking outlet.

Photo 2 of 2 : UCIP_FA_2018_30312_55744.jpg



LS view: U type concrete headwall and CMP on levee slope. Needs cleaning and clearing of debris.

* Location LS : Land Side N/A : Not Applicable WS : Water Side CR : Crown	** Rating A : Acceptable M : Minimally Acceptable U : Unacceptable	N : Not Inspected/Rated C : Corrected A/W : Acceptable but Monitor & Maintain	+ Issue Type Ma : Maintenance Deficiency Ob : Design & System Obsolescence En : Enforcement
--	--	---	---

**Flood Control Project Maintenance
Levee Inspections**

Maintenance Issue Types Only, Levee Inspection Report By Mile - Fall 2018

Butte County Department of Public Works

Waterway	Bank	Unit Miles	Inspection Start/End	Inspector
Unit No. 01 Mud Creek	Right	6.80	09/18/2018 09/18/2018	Bob Duffey

LM Start	4.81	Rating **	M	Issue No.	68
LM End	4.81	Issue Type +	Ma	Location *	
Category	Supplemental			GPS Latitude/Longitude	
				Start	End
Item	DWR UCIP LMA Responsibility			39.780244 °	39.780244 °
				-121.891267 °	-121.891267 °
DWR ID	19221				
Comment Code					
Inspector Comment					
FS_ID:30388					
DS_ID:19221					
EP_NO: N/A					
Repair Type: Non-Urgent					
Crossing Status: Found					
UCIP Comments: CM Standpipe intake. Intake pipe with air vent. Steel rib-bar grit cover on the standpipe on landside levee toe.Needs cleaning and clearing on both ends of the pipe.					
FIELD_STRUCT_DESC: 24-inch corrugated metal gravity drainage pipe through the levee, 15 feet below the crown. Flap gate on the waterside (WS) end. Concrete U-shaped headwall on the WS end. Grouted riprap spillway on the WS end. Corrugated metal standpipe intake. Intake pipe with an air vent. Steel rib-bar grit cover on the standpipe on the landside (LS) toe. [Additional Reference(s): DWR Levee Log, 1992. USACE Sacramento O&M Manual 504, May 1965, (HLM 4.94)].					
FS Date: 2/20/2014					

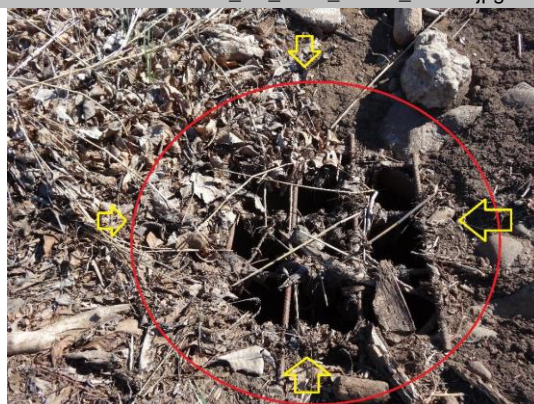
LM Start	4.81	Rating **	M	Issue No.	68 (cont)
LM End	4.81	Issue Type +	Ma	Location *	

Photo 1 of 2 : UCIP_FA_2018_30388_55891.jpg



WS view: U type concrete headwall, pipe, and flapgate on levee slope. Vegetation/soil debris blocking outlet.

Photo 2 of 2 : UCIP_FA_2018_30388_55890.jpg



LS view: Underground CM standpipe intake with steel grit on levee toe.

* Location LS : Land Side N/A : Not Applicable WS : Water Side CR : Crown	** Rating A : Acceptable M : Minimally Acceptable U : Unacceptable	N : Not Inspected/Rated C : Corrected A/W : Acceptable but Monitor & Maintain	+ Issue Type Ma : Maintenance Deficiency Ob : Design & System Obsolescence En : Enforcement
--	--	---	---

**Flood Control Project Maintenance
Levee Inspections**

Maintenance Issue Types Only, Levee Inspection Report By Mile - Fall 2018

Butte County Department of Public Works

Waterway	Bank	Unit Miles	Inspection Start/End	Inspector
Unit No. 01 Mud Creek	Right	6.80	09/18/2018 09/18/2018	Bob Duffey

LM Start	5.09	Rating **	A/W	Issue No.	70
LM End	5.09	Issue Type +	Ma	Location *	
Category	Supplemental			GPS Latitude/Longitude	
				Start	End
Item	DWR UCIP LMA Responsibility			39.783636 °	39.783636 °
				-121.888463 °	-121.888463 °
DWR ID	19222				
Comment Code					
Inspector Comment					
FS_ID:30327					
DS_ID:19222					
EP_NO: N/A					
Repair Type: No Action Needed					
Crossing Status: Found					
UCIP Comments: Slide gate in CM stadpipe on waterside levee slope.					
FIELD_STRUCT_DESC: 36-inch corrugated metal gravity drainage pipe					
through the levee, 17 feet below the crown. Slide gate in a corrugated					
metal standpipe on the waterside (WS) slope. Flap gate on the WS					
end. Concrete U-shaped headwall on each end. Grouted riprap apron					
on the landside (LS) end. Grouted riprap spillway on the WS end.					
[Additional Reference(s): DWR Levee Log, 1992. USACE Sacramento					
O&M Manual 504, May 1965, (HLM 5.22)].					
FS Date: 2/20/2014					

LM Start	5.09	Rating **	A/W	Issue No.	70 (cont)
LM End	5.09	Issue Type +	Ma	Location *	

Photo 1 of 3 : UCIP_FA_2018_30327_55768.jpg



WS view: U type concrete headwall, pipe, and flapgate on levee slope.

Photo 2 of 3 : UCIP_FA_2018_30327_55767.jpg



WS view: CM standpipe with slide gate on levee slope.

* Location LS : Land Side N/A : Not Applicable WS : Water Side CR : Crown	** Rating A : Acceptable M : Minimally Acceptable U : Unacceptable	N : Not Inspected/Rated C : Corrected A/W : Acceptable but Monitor & Maintain	+ Issue Type Ma : Maintenance Deficiency Ob : Design & System Obsolescence En : Enforcement
--	--	---	---

**Flood Control Project Maintenance
Levee Inspections**

Maintenance Issue Types Only, Levee Inspection Report By Mile - Fall 2018

Butte County Department of Public Works

Waterway	Bank	Unit Miles	Inspection Start/End	Inspector
Unit No. 01 Mud Creek	Right	6.80	09/18/2018 09/18/2018	Bob Duffey

LM Start	5.09	Rating **	A/W	Issue No.	70 (cont)	
LM End	5.09	Issue Type +	Ma	Location *		
Category	Supplemental			GPS Latitude/Longitude		
				Start		End
Item	DWR UCIP LMA Responsibility			39.783636 °		39.783636 °
				-121.888463 °		-121.888463 °
DWR ID	19222					
Comment Code						
Inspector Comment						
FS_ID:30327						
DS_ID:19222						
EP_NO: N/A						
Repair Type: No Action Needed						
Crossing Status: Found						
UCIP Comments: Slide gate in CM stadpipe on waterside levee slope.						
FIELD_STRUCT_DESC: 36-inch corrugated metal gravity drainage pipe						
through the levee, 17 feet below the crown. Slide gate in a corrugated						
metal standpipe on the waterside (WS) slope. Flap gate on the WS						
end. Concrete U-shaped headwall on each end. Grouted riprap apron						
on the landside (LS) end. Grouted riprap spillway on the WS end.						
[Additional Reference(s): DWR Levee Log, 1992. USACE Sacramento						
O&M Manual 504, May 1965, (HLM 5.22)].						
FS Date: 2/20/2014						

Photo 3 of 3 : UCIP_FA_2018_30327_55766.jpg



LS view: U type concrete headwall and CMP on levee slope.

LM Start	5.20	Rating **	M	Issue No.	55
LM End	5.20	Issue Type +	Ma	Location *	LS
Category	Earthen Levee			GPS Latitude/Longitude	
				Start	End
Item	Vegetation			39.784234 °	39.784234 °
				-121.886589 °	-121.886589 °
DWR ID	DWR_NA0003_01_f_2016_55				
Comment Code					
V2 : Remove the wild growth other than native grasses from the levee slopes.					
Inspector Comment					

Photo 1 of 1 : FA_2018_NA0003_64_55_20180905_00031.jpg



View of the blackberries blocking visibility and access.

* Location LS : Land Side N/A : Not Applicable WS : Water Side CR : Crown	** Rating A : Acceptable M : Minimally Acceptable U : Unacceptable	N : Not Inspected/Rated C : Corrected A/W : Acceptable but Monitor & Maintain	+ Issue Type Ma : Maintenance Deficiency Ob : Design & System Obsolescence En : Enforcement
--	--	---	---

**Flood Control Project Maintenance
Levee Inspections**

Maintenance Issue Types Only, Levee Inspection Report By Mile - Fall 2018

Butte County Department of Public Works

Waterway	Bank	Unit Miles	Inspection Start/End	Inspector
Unit No. 01 Mud Creek	Right	6.80	09/18/2018 09/18/2018	Bob Duffey

LM Start	5.89	Rating **	M	Issue No.	44
LM End	5.89	Issue Type +	Ma	Location *	LS
Category	Earthen Levee			GPS Latitude/Longitude	
				Start	End
Item	Vegetation			39.792121°	39.792121°
				-121.886836°	-121.886836°
DWR ID	DWR_NA0003_01_f_2016_44				
Comment Code					
V2 : Remove the wild growth other than native grasses from the levee slopes.					
Inspector Comment					
Blackberry bramble					

No Photos

LM Start	5.91	Rating **	M	Issue No.	43
LM End	5.91	Issue Type +	Ma	Location *	LS
Category	Earthen Levee			GPS Latitude/Longitude	
				Start	End
Item	Vegetation			39.792482°	39.792482°
				-121.887078°	-121.887078°
DWR ID	DWR_NA0003_01_f_2016_43				
Comment Code					
V2 : Remove the wild growth other than native grasses from the levee slopes.					
Inspector Comment					
Blackberry bramble					

No Photos

LM Start	5.96	Rating **	M	Issue No.	22
LM End	5.96	Issue Type +	Ma	Location *	LS
Category	Earthen Levee			GPS Latitude/Longitude	
				Start	End
Item	Vegetation			39.793116 °	39.793116 °
				-121.887296 °	-121.887296 °
DWR ID	DWR_NA0003_01_f_2016_22				
Comment Code					
V4 : Elderberries are blocking visibility and flood fight capability.					
Inspector Comment					
Blackberry bramble					

Photo 1 of 1 : FA_2018_NA0003_64_22_20180905_00005.jpg



View of the blackberries blocking visibility and access.

* Location LS : Land Side N/A : Not Applicable WS : Water Side CR : Crown	** Rating A : Acceptable M : Minimally Acceptable U : Unacceptable	N : Not Inspected/Rated C : Corrected A/W : Acceptable but Monitor & Maintain	+ Issue Type Ma : Maintenance Deficiency Ob : Design & System Obsolescence En : Enforcement
--	--	---	---

**Flood Control Project Maintenance
Levee Inspections**

Maintenance Issue Types Only, Levee Inspection Report By Mile - Fall 2018

Butte County Department of Public Works

Waterway	Bank	Unit Miles	Inspection Start/End	Inspector
Unit No. 01 Mud Creek	Right	6.80	09/18/2018 09/18/2018	Bob Duffey

LM Start	5.98	Rating **	U	Issue No.	37
LM End	6.07	Issue Type +	Ma	Location *	LS
Category	Earthen Levee			GPS Latitude/Longitude	
				Start	End
Item	Vegetation			39.793411 °	39.794580 °
				-121.887310 °	-121.886759 °
DWR ID	DWR_NA0003_01_s_2016_37				
Comment Code					
V7 : Trees / Woody Vegetation					
Inspector Comment					
Various overgrown vegetation completely obscuring landside toe visibility.					

Photo 1 of 1 : FA_2018_NA0003_64_37_20180905_00018.jpg



04/25/2016: Trim trees on L/S slope.

LM Start	6.08	Rating **	M	Issue No.	36
LM End	6.08	Issue Type +	Ma	Location *	LS
Category	Earthen Levee			GPS Latitude/Longitude	
				Start	End
Item	Vegetation			39.794708 °	39.794708 °
				-121.886616 °	-121.886616 °
DWR ID	DWR_NA0003_01_s_2016_36				
Comment Code					
V2 : Remove the wild growth other than native grasses from the levee slopes.					
Inspector Comment					
Blackberry bramble					

No Photos

LM Start	6.16	Rating **	M	Issue No.	34
LM End	6.16	Issue Type +	Ma	Location *	LS
Category	Earthen Levee			GPS Latitude/Longitude	
				Start	End
Item	Vegetation			39.795428 °	39.795428 °
				-121.885306 °	-121.885306 °
DWR ID	DWR_NA0003_01_s_2016_34				
Comment Code					
V2 : Remove the wild growth other than native grasses from the levee slopes.					
Inspector Comment					
Blackberry bramble on landside toe blocking visibility.					

Photo 1 of 1 : FA_2018_NA0003_64_34_20180905_00016.jpg



Trim vegetation at L/S toe.

* Location LS : Land Side N/A : Not Applicable WS : Water Side CR : Crown	** Rating A : Acceptable M : Minimally Acceptable U : Unacceptable	N : Not Inspected/Rated C : Corrected A/W : Acceptable but Monitor & Maintain	+ Issue Type Ma : Maintenance Deficiency Ob : Design & System Obsolescence En : Enforcement
--	--	--	---

**Flood Control Project Maintenance
Levee Inspections**

Maintenance Issue Types Only, Levee Inspection Report By Mile - Fall 2018

Butte County Department of Public Works

Waterway	Bank	Unit Miles	Inspection Start/End	Inspector
Unit No. 02 Mud Creek	Left	7.96	09/18/2018 09/18/2018	Bob Duffey

LM Start	0.23	Rating **	M	Issue No.	43	
LM End	0.23	Issue Type +	Ma	Location *		
Category	Supplemental			GPS Latitude/Longitude		
				Start	End	
Item	DWR UCIP LMA Responsibility			39.797416 °	39.797416 °	
				-121.881675 °	-121.881675 °	
DWR ID	19234					
Comment Code						
Inspector Comment						
FS_ID:31667						
DS_ID:19234						
EP_NO: N/A						
Repair Type: Non-Urgent						
Crossing Status: Found						
UCIP Comments: Needs cleaning and clearing the culvert.						
FIELD_STRUCT_DESC: 24-inch corrugated metal gravity drainage pipe through the levee, 6.6 feet below the crown. Flap gate on the waterside (WS) end. Concrete U-shaped headwall on each end. Grouted riprap spillway on the WS end. [Additional Reference(s): DWR Levee Log, 1992. USACE Sacramento O&M Manual 504, May 1965, (HLM 0.25)].						
FS Date: 3/11/2014						

LM Start	0.23	Rating **	M	Issue No.	43 (cont)
LM End	0.23	Issue Type +	Ma	Location *	

Photo 1 of 3 : UCIP_FA_2018_31667_57968.jpg



WS view: CMP culvert with U type concrete headwall. Vegetation debris blocking outlet box.

Photo 2 of 3 : UCIP_FA_2018_31667_57967.jpg



WS view: U type concrete headwall, pipe, and flapgate on levee slope. Vegetation debris on outlet box.

* Location LS : Land Side N/A : Not Applicable WS : Water Side CR : Crown	** Rating A : Acceptable M : Minimally Acceptable U : Unacceptable	N : Not Inspected/Rated C : Corrected A/W : Acceptable but Monitor & Maintain	+ Issue Type Ma : Maintenance Deficiency Ob : Design & System Obsolescence En : Enforcement
--	--	---	---

**Flood Control Project Maintenance
Levee Inspections**

Maintenance Issue Types Only, Levee Inspection Report By Mile - Fall 2018

Butte County Department of Public Works

Waterway	Bank	Unit Miles	Inspection Start/End	Inspector
Unit No. 02 Mud Creek	Left	7.96	09/18/2018 09/18/2018	Bob Duffey

LM Start	0.23	Rating **	M	Issue No.	43 (cont)	
LM End	0.23	Issue Type +	Ma	Location *		
Category	Supplemental			GPS Latitude/Longitude		
				Start	End	
Item	DWR UCIP LMA Responsibility			39.797416°	39.797416°	
				-121.881675°	-121.881675°	
DWR ID	19234					
Comment Code						
Inspector Comment						
FS_ID:31667						
DS_ID:19234						
EP_NO: N/A						
Repair Type: Non-Urgent						
Crossing Status: Found						
UCIP Comments: Needs cleaning and clearing the culvert.						
FIELD_STRUCT_DESC: 24-inch corrugated metal gravity drainage pipe through the levee, 6.6 feet below the crown. Flap gate on the waterside (WS) end. Concrete U-shaped headwall on each end. Grouted riprap spillway on the WS end. [Additional Reference(s): DWR Levee Log, 1992. USACE Sacramento O&M Manual 504, May 1965, (HLM 0.25)].						
FS Date: 3/11/2014						

Photo 3 of 3 : UCIP_FA_2018_31667_57966.jpg



LS view: U type concrete headwall and CMP on levee slope. Vegetation debris on inlet box.

LM Start	0.31	Rating **	M	Issue No.	29
LM End	0.31	Issue Type +	Ma	Location *	LS
Category	Earthen Levee			GPS Latitude/Longitude	
				Start	End
Item	Slope Stability			39.797071 °	39.797071 °
				-121.883049 °	-121.883049 °
DWR ID	DWR_NA0003_02_f_2016_29				
Comment Code					
S3 : Repair the levee slope damaged by vehicle traffic and prevent access where possible.					
Inspector Comment					

Photo 1 of 1 : FA_2018_NA0003_65_29_20180905_00006.jpg



View of the slope instability caused by vehicles along the landside slope.

*** Location**

LS : Land Side N/A : Not Applicable
WS : Water Side
CR : Crown

**** Rating**

A : Acceptable N : Not Inspected/Rated
M : Minimally Acceptable C : Corrected
U : Unacceptable A/W : Acceptable but Monitor & Maintain

+ Issue Type

Ma : Maintenance Deficiency
Ob : Design & System Obsolescence
En : Enforcement

**Flood Control Project Maintenance
Levee Inspections**

Maintenance Issue Types Only, Levee Inspection Report By Mile - Fall 2018

Butte County Department of Public Works

Waterway	Bank	Unit Miles	Inspection Start/End	Inspector
Unit No. 02 Mud Creek	Left	7.96	09/18/2018 09/18/2018	Bob Duffey

LM Start	1.26	Rating **	M	Issue No.	44
LM End	1.26	Issue Type +	Ma	Location *	
Category	Supplemental			GPS Latitude/Longitude	
				Start	End
Item	DWR UCIP LMA Responsibility			39.784062 °	39.784062 °
				-121.884344 °	-121.884344 °
DWR ID	19235				
Comment Code					
Inspector Comment					
FS_ID:30403 DS_ID:19235 EP_NO: N/A Repair Type: Non-Urgent Crossing Status: Found UCIP Comments: Needs cleaning and clearing of debris. FIELD_STRUCT_DESC: 24-inch corrugated metal gravity drainage pipe through the levee, 12.5 feet below the crown. Flap gate on the waterside (WS) end. Concrete U-shaped headwall on each end. Grouted riprap apron on the landside (LS) end. Grouted riprap spillway on the WS end. [Additional Reference(s): DWR Levee Log, 1992. USACE Sacramento O&M Manual 504, May 1965, (HLM 1.34)]. FS Date: 2/24/2014					

LM Start	1.26	Rating **	M	Issue No.	44 (cont)
LM End	1.26	Issue Type +	Ma	Location *	

Photo 1 of 3 : UCIP_FA_2018_30403_55922.jpg



WS view: U type concrete headwall, pipe, and flapgate on levee slope.

Photo 2 of 3 : UCIP_FA_2018_30403_55921.jpg



LS view: U type concrete headwall and CMP on levee slope. Vegetation debris in inlet pipe.

* Location LS : Land Side N/A : Not Applicable WS : Water Side CR : Crown	** Rating A : Acceptable M : Minimally Acceptable U : Unacceptable	N : Not Inspected/Rated C : Corrected A/W : Acceptable but Monitor & Maintain	+ Issue Type Ma : Maintenance Deficiency Ob : Design & System Obsolescence En : Enforcement
--	--	---	---

**Flood Control Project Maintenance
Levee Inspections**

Maintenance Issue Types Only, Levee Inspection Report By Mile - Fall 2018

Butte County Department of Public Works

Waterway	Bank	Unit Miles	Inspection Start/End	Inspector
Unit No. 02 Mud Creek	Left	7.96	09/18/2018 09/18/2018	Bob Duffey

LM Start	1.26	Rating **	M	Issue No.	44 (cont)	
LM End	1.26	Issue Type +	Ma	Location *		
Category	Supplemental			GPS Latitude/Longitude		
				Start		End
Item	DWR UCIP LMA Responsibility			39.784062 °		39.784062 °
				-121.884344 °		-121.884344 °
DWR ID	19235					
Comment Code						
Inspector Comment						
FS_ID:30403 DS_ID:19235 EP_NO: N/A Repair Type: Non-Urgent Crossing Status: Found UCIP Comments: Needs cleaning and clearing of debris. FIELD_STRUCT_DESC: 24-inch corrugated metal gravity drainage pipe through the levee, 12.5 feet below the crown. Flap gate on the waterside (WS) end. Concrete U-shaped headwall on each end. Grouted riprap apron on the landside (LS) end. Grouted riprap spillway on the WS end. [Additional Reference(s): DWR Levee Log, 1992. USACE Sacramento O&M Manual 504, May 1965, (HLM 1.34)]. FS Date: 2/24/2014						

Photo 3 of 3 : UCIP_FA_2018_30403_55920.jpg



LS view: inside view of CMP on levee slope. Needs cleaning and clearing.

LM Start	1.46	Rating **	M	Issue No.	45
LM End	1.46	Issue Type +	Ma	Location *	
Category	Supplemental			GPS Latitude/Longitude	
				Start	End
Item	DWR UCIP LMA Responsibility			39.782980 °	39.782980 °
				-121.887834 °	-121.887834 °
DWR ID	19237				
Comment Code					
Inspector Comment					
FS_ID:30743 DS_ID:19237 EP_NO: N/A Repair Type: Non-Urgent Crossing Status: Found UCIP Comments: Needs cleaning and clearing of debris. FIELD_STRUCT_DESC: 24-inch corrugated metal gravity drainage pipe through the levee, 11 feet below the crown. Flap gate on the waterside (WS) end. Concrete U-shaped headwall on each end. Grouted riprap apron on the landside (LS) end. Grouted riprap spillway on the WS end. [Additional Reference(s): DWR Levee Log, 1992. USACE Sacramento O&M Manual 504, May 1965, (HLM 1.55)]. FS Date: 2/24/2014					

Photo 1 of 2 : UCIP_FA_2018_30743_56641.jpg



WS view: U type concrete headwall, pipe, and flapgate on levee slope. Debris in outlet box.

* Location LS : Land Side N/A : Not Applicable WS : Water Side CR : Crown	** Rating A : Acceptable M : Minimally Acceptable U : Unacceptable	N : Not Inspected/Rated C : Corrected A/W : Acceptable but Monitor & Maintain	+ Issue Type Ma : Maintenance Deficiency Ob : Design & System Obsolescence En : Enforcement
--	--	---	---

**Flood Control Project Maintenance
Levee Inspections**

Maintenance Issue Types Only, Levee Inspection Report By Mile - Fall 2018

Butte County Department of Public Works

Waterway	Bank	Unit Miles	Inspection Start/End	Inspector
Unit No. 02 Mud Creek	Left	7.96	09/18/2018 09/18/2018	Bob Duffey

LM Start	1.46	Rating **	M	Issue No.	45 (cont)
LM End	1.46	Issue Type +	Ma	Location *	
Category	Supplemental			GPS Latitude/Longitude	
				Start	End
Item	DWR UCIP LMA Responsibility			39.782980 °	39.782980 °
				-121.887834 °	-121.887834 °
DWR ID	19237				
Comment Code					
Inspector Comment					
FS_ID:30743 DS_ID:19237 EP_NO: N/A Repair Type: Non-Urgent Crossing Status: Found UCIP Comments: Needs cleaning and clearing of debris. FIELD_STRUCT_DESC: 24-inch corrugated metal gravity drainage pipe through the levee, 11 feet below the crown. Flap gate on the waterside (WS) end. Concrete U-shaped headwall on each end. Grouted riprap apron on the landside (LS) end. Grouted riprap spillway on the WS end. [Additional Reference(s): DWR Levee Log, 1992. USACE Sacramento O&M Manual 504, May 1965, (HLM 1.55)]. FS Date: 2/24/2014					

Photo 2 of 2 : UCIP_FA_2018_30743_56640.jpg



LS view: U type concrete headwall and CMP on levee slope. Vegetation debris and soil in inlet area.

LM Start	1.62	Rating **	N	Issue No.	32
LM End	1.62	Issue Type +	Ma	Location *	LS
Category	Earthen Levee			GPS Latitude/Longitude	
				Start	End
Item	Trim / Thin Trees			39.781173 °	39.781173 °
				-121.889526 °	-121.889526 °
DWR ID	DWR_NA0003_02_f_2016_32				
Comment Code					
T5 : Tree stumps.					
Inspector Comment					

No Photos

* Location LS : Land Side N/A : Not Applicable WS : Water Side CR : Crown	** Rating A : Acceptable M : Minimally Acceptable U : Unacceptable	N : Not Inspected/Rated C : Corrected A/W : Acceptable but Monitor & Maintain	+ Issue Type Ma : Maintenance Deficiency Ob : Design & System Obsolescence En : Enforcement
--	--	---	---

**Flood Control Project Maintenance
Levee Inspections**

Maintenance Issue Types Only, Levee Inspection Report By Mile - Fall 2018

Butte County Department of Public Works

Waterway	Bank	Unit Miles	Inspection Start/End	Inspector
Unit No. 02 Mud Creek	Left	7.96	09/18/2018 09/18/2018	Bob Duffey

LM Start	2.34	Rating **	M	Issue No.	48	
LM End	2.34	Issue Type +	Ma	Location *		
Category	Supplemental			GPS Latitude/Longitude		
				Start		End
Item	DWR UCIP LMA Responsibility			39.772185 °		39.772185 °
				-121.895681 °		-121.895681 °
DWR ID	19239					
Comment Code						
Inspector Comment						
FS_ID:30763						
DS_ID:19239						
EP_NO: N/A						
Repair Type: Non-Urgent						
Crossing Status: Found						
UCIP Comments: Debris in landside inlet area. Needs cleaning and clearing of debris.						
FIELD_STRUCT_DESC: 24-inch corrugated metal gravity drainage pipe through the levee, 10 feet below the crown. Flap gate on the waterside (WS) end. Concrete U-shaped headwall on each end. Grouted riprap apron on the landside (LS) end. Grouted riprap spillway on the WS end. [Additional Reference(s): DWR Levee Log, 1992. USACE Sacramento O&M Manual 504, May 1965, (HLM 2.44)].						
FS Date: 2/24/2014						

LM Start	2.34	Rating **	M	Issue No.	48 (cont)
LM End	2.34	Issue Type +	Ma	Location *	

Photo 1 of 3 : UCIP_FA_2018_30763_56662.jpg



WS view: U type concrete headwall, pipe, and flapgate on levee slope. Vegetation debris blocking outlet.

Photo 2 of 3 : UCIP_FA_2018_30763_56661.jpg



LS view: U type concrete headwall and CMP on levee slope.

* Location LS : Land Side N/A : Not Applicable WS : Water Side CR : Crown	** Rating A : Acceptable M : Minimally Acceptable U : Unacceptable	N : Not Inspected/Rated C : Corrected A/W : Acceptable but Monitor & Maintain	+ Issue Type Ma : Maintenance Deficiency Ob : Design & System Obsolescence En : Enforcement
--	--	---	---

**Flood Control Project Maintenance
Levee Inspections**

Maintenance Issue Types Only, Levee Inspection Report By Mile - Fall 2018

Butte County Department of Public Works

Waterway	Bank	Unit Miles	Inspection Start/End	Inspector
Unit No. 02 Mud Creek	Left	7.96	09/18/2018 09/18/2018	Bob Duffey

LM Start	2.34	Rating **	M	Issue No.	48 (cont)	
LM End	2.34	Issue Type +	Ma	Location *		
Category	Supplemental			GPS Latitude/Longitude		
				Start	End	
Item	DWR UCIP LMA Responsibility			39.772185 °	39.772185 °	
				-121.895681 °	-121.895681 °	
DWR ID	19239					
Comment Code						
Inspector Comment						
FS_ID:30763 DS_ID:19239 EP_NO: N/A Repair Type: Non-Urgent Crossing Status: Found UCIP Comments: Debris in landside inlet area. Needs cleaning and clearing of debris. FIELD_STRUCT_DESC: 24-inch corrugated metal gravity drainage pipe through the levee, 10 feet below the crown. Flap gate on the waterside (WS) end. Concrete U-shaped headwall on each end. Grouted riprap apron on the landside (LS) end. Grouted riprap spillway on the WS end. [Additional Reference(s): DWR Levee Log, 1992. USACE Sacramento O&M Manual 504, May 1965, (HLM 2.44)]. FS Date: 2/24/2014						

Photo 3 of 3 : UCIP_FA_2018_30763_56660.jpg



LS view: inside view of CMP on levee slope. Needs cleaning and clearing.

LM Start	2.54	Rating **	A/W	Issue No.	41
LM End	2.68	Issue Type +	Ma	Location *	WS
Category	Supplemental			GPS Latitude/Longitude	
				Start	End
Item	2017 USACE Erosion Survey, DRAFT			39.771186 °	39.769616 °
				-121.899060 °	-121.900854 °
DWR ID	DWR_ST0010_02_f_2022_11				
Comment Code					
Inspector Comment					
2017 Site ID: MUD 2.8 L					
Status: Eroding New					
2017 Field Notes: Large erosion scarp along lower toe.					
Site History:					

No Photos

* Location LS : Land Side N/A : Not Applicable WS : Water Side CR : Crown	** Rating A : Acceptable M : Minimally Acceptable U : Unacceptable	N : Not Inspected/Rated C : Corrected A/W : Acceptable but Monitor & Maintain	+ Issue Type Ma : Maintenance Deficiency Ob : Design & System Obsolescence En : Enforcement
--	--	---	---

**Flood Control Project Maintenance
Levee Inspections**

Maintenance Issue Types Only, Levee Inspection Report By Mile - Fall 2018

Butte County Department of Public Works

Waterway	Bank	Unit Miles	Inspection Start/End	Inspector
Unit No. 02 Mud Creek	Left	7.96	09/18/2018 09/18/2018	Bob Duffey

LM Start	2.74	Rating **	M	Issue No.	49
LM End	2.74	Issue Type +	Ma	Location *	
Category	Supplemental			GPS Latitude/Longitude	
				Start	End
Item	DWR UCIP LMA Responsibility			39.768741 °	39.768741 °
				-121.901176 °	-121.901176 °
DWR ID	19240				
Comment Code					
Inspector Comment					
FS_ID:30783 DS_ID:19240 EP_NO: N/A Repair Type: Non-Urgent Crossing Status: Found UCIP Comments: Needs cleaning and clearing of debris. FIELD_STRUCT_DESC: 24-inch corrugated metal gravity drainage pipe through the levee, 10 feet below the crown. Flap gate on the waterside (WS) end. Concrete U-shaped headwall on each end. Grouted riprap apron on the landside (LS) end. Grouted riprap spillway on the WS end. [Additional Reference(s): DWR Levee Log, 1992. USACE Sacramento O&M Manual 504, May 1965, (HLM 2.86)]. FS Date: 2/24/2014					

LM Start	2.74	Rating **	M	Issue No.	49 (cont)
LM End	2.74	Issue Type +	Ma	Location *	

Photo 1 of 3 : UCIP_FA_2018_30783_56682.jpg



WS view: U type concrete headwall, pipe, and flapgate on levee slope. Gate not fully closed. Debris and soil in outlet box.

Photo 2 of 3 : UCIP_FA_2018_30783_56681.jpg



LS view: U type concrete headwall and CMP on levee slope. Debris and soil in inlet box.

* Location LS : Land Side N/A : Not Applicable WS : Water Side CR : Crown	** Rating A : Acceptable M : Minimally Acceptable U : Unacceptable	N : Not Inspected/Rated C : Corrected A/W : Acceptable but Monitor & Maintain	+ Issue Type Ma : Maintenance Deficiency Ob : Design & System Obsolescence En : Enforcement
--	--	---	---

**Flood Control Project Maintenance
Levee Inspections**

Maintenance Issue Types Only, Levee Inspection Report By Mile - Fall 2018

Butte County Department of Public Works

Waterway	Bank	Unit Miles	Inspection Start/End	Inspector
Unit No. 02 Mud Creek	Left	7.96	09/18/2018 09/18/2018	Bob Duffey

LM Start	2.74	Rating **	M	Issue No.	49 (cont)	
LM End	2.74	Issue Type +	Ma	Location *		
Category	Supplemental			GPS Latitude/Longitude		
				Start		End
Item	DWR UCIP LMA Responsibility			39.768741 °		39.768741 °
				-121.901176 °		-121.901176 °
DWR ID	19240					
Comment Code						
Inspector Comment						
FS_ID:30783 DS_ID:19240 EP_NO: N/A Repair Type: Non-Urgent Crossing Status: Found UCIP Comments: Needs cleaning and clearing of debris. FIELD_STRUCT_DESC: 24-inch corrugated metal gravity drainage pipe through the levee, 10 feet below the crown. Flap gate on the waterside (WS) end. Concrete U-shaped headwall on each end. Grouted riprap apron on the landside (LS) end. Grouted riprap spillway on the WS end. [Additional Reference(s): DWR Levee Log, 1992. USACE Sacramento O&M Manual 504, May 1965, (HLM 2.86)]. FS Date: 2/24/2014						

Photo 3 of 3 : UCIP_FA_2018_30783_56680.jpg



LS view: inside view of CMP on levee slope. Needs cleaning and clearing.

LM Start	2.91	Rating **	A	Issue No.	26
LM End	2.91	Issue Type +	Ma	Location *	LS
Category	Earthen Levee			GPS Latitude/Longitude	
				Start	End
Item	Vegetation			39.766620 °	39.766620 °
				-121.902605 °	-121.902605 °
DWR ID	DWR_NA0003_02_f_2018_26				
Comment Code					
V1 : Control annual grass and weeds on the levee slopes and easements.					
Inspector Comment					
The vegetation was removed on both slopes.					

Photo 1 of 1 : FA_2018_NA0003_65_26_20181001_00067.jpg



View of no vegetation on both slopes.

* Location LS : Land Side N/A : Not Applicable WS : Water Side CR : Crown	** Rating A : Acceptable M : Minimally Acceptable U : Unacceptable	N : Not Inspected/Rated C : Corrected A/W : Acceptable but Monitor & Maintain	+ Issue Type Ma : Maintenance Deficiency Ob : Design & System Obsolescence En : Enforcement
--	--	---	---

**Flood Control Project Maintenance
Levee Inspections**

Maintenance Issue Types Only, Levee Inspection Report By Mile - Fall 2018

Butte County Department of Public Works

Waterway	Bank	Unit Miles	Inspection Start/End	Inspector
Unit No. 02 Mud Creek	Left	7.96	09/18/2018 09/18/2018	Bob Duffey

LM Start	3.08	Rating **	A/W	Issue No.	42
LM End	3.16	Issue Type +	Ma	Location *	WS
Category	Supplemental			GPS Latitude/Longitude	
				Start	End
Item	2017 USACE Erosion Survey, DRAFT			39.765543 °	39.764869 °
				-121.905367 °	-121.906737 °
DWR ID	DWR_ST0010_02_f_2022_12				
Comment Code					
Inspector Comment					
2017 Site ID: MUD 3.3 L					
Status: Eroding New					
2017 Field Notes: Large mass failure of lower bank slope.					
Site History:					

No Photos

LM Start	3.50	Rating **	M	Issue No.	50
LM End	3.50	Issue Type +	Ma	Location *	
Category	Supplemental			GPS Latitude/Longitude	
				Start	End
Item	DWR UCIP LMA Responsibility			39.760847 °	39.760847 °
				-121.910265 °	-121.910265 °
DWR ID	19241				
Comment Code					
Inspector Comment					
FS_ID:30803					
DS_ID:19241					
EP_NO: N/A					
Repair Type: Non-Urgent					
Crossing Status: Found					
UCIP Comments: Needs cleaning and clearing of debris.					
FIELD_STRUCT_DESC: 24-inch corrugated metal gravity drainage pipe through the levee, 6.5 feet below the crown. Flap gate on the waterside (WS) end. Concrete U-shaped headwall on each end. Grouted riprap apron on the landside (LS) end. Grouted riprap spillway on the WS end. [Additional Reference(s): DWR Levee Log, 1992. USACE Sacramento O&M Manual 504, May 1965, (HLM 3.64)].					
FS Date: 2/24/2014					

Photo 1 of 3 : UCIP_FA_2018_30803_56685.jpg



WS view: U type concrete headwall, pipe, and flapgate on levee slope.
Vegetation debris and soil blocking outlet.

* Location LS : Land Side N/A : Not Applicable WS : Water Side CR : Crown	** Rating A : Acceptable M : Minimally Acceptable U : Unacceptable	N : Not Inspected/Rated C : Corrected A/W : Acceptable but Monitor & Maintain	+ Issue Type Ma : Maintenance Deficiency Ob : Design & System Obsolescence En : Enforcement
--	--	--	---

**Flood Control Project Maintenance
Levee Inspections**

Maintenance Issue Types Only, Levee Inspection Report By Mile - Fall 2018

Butte County Department of Public Works

Waterway	Bank	Unit Miles	Inspection Start/End	Inspector
Unit No. 02 Mud Creek	Left	7.96	09/18/2018 09/18/2018	Bob Duffey

LM Start	3.50	Rating **	M	Issue No.	50 (cont)	
LM End	3.50	Issue Type +	Ma	Location *		
Category	Supplemental			GPS Latitude/Longitude		
				Start		End
Item	DWR UCIP LMA Responsibility			39.760847 °		39.760847 °
				-121.910265 °		-121.910265 °
DWR ID	19241					
Comment Code						
Inspector Comment						
FS_ID:30803 DS_ID:19241 EP_NO: N/A Repair Type: Non-Urgent Crossing Status: Found UCIP Comments: Needs cleaning and clearing of debris. FIELD_STRUCT_DESC: 24-inch corrugated metal gravity drainage pipe through the levee, 6.5 feet below the crown. Flap gate on the waterside (WS) end. Concrete U-shaped headwall on each end. Grouted riprap apron on the landside (LS) end. Grouted riprap spillway on the WS end. [Additional Reference(s): DWR Levee Log, 1992. USACE Sacramento O&M Manual 504, May 1965, (HLM 3.64)]. FS Date: 2/24/2014						

LM Start	3.50	Rating **	M	Issue No.	50 (cont)
LM End	3.50	Issue Type +	Ma	Location *	

Photo 2 of 3 : UCIP_FA_2018_30803_56684.jpg



LS view: U type concrete headwall and CMP on levee slope. Vegetation debris and soil blocking inlet.

Photo 3 of 3 : UCIP_FA_2018_30803_56683.jpg



LS view: inside view of CMP on levee slope. Needs cleaning and clearing.

* Location LS : Land Side N/A : Not Applicable WS : Water Side CR : Crown	** Rating A : Acceptable M : Minimally Acceptable U : Unacceptable	N : Not Inspected/Rated C : Corrected A/W : Acceptable but Monitor & Maintain	+ Issue Type Ma : Maintenance Deficiency Ob : Design & System Obsolescence En : Enforcement
--	--	---	---

**Flood Control Project Maintenance
Levee Inspections**

Maintenance Issue Types Only, Levee Inspection Report By Mile - Fall 2018

Butte County Department of Public Works

Waterway	Bank	Unit Miles	Inspection Start/End	Inspector
Unit No. 02 Mud Creek	Left	7.96	09/18/2018 09/18/2018	Bob Duffey

LM Start	3.52	Rating **	M	Issue No.	10
LM End	3.52	Issue Type +	Ma	Location *	LS
Category	Earthen Levee			GPS Latitude/Longitude	
				Start	End
Item	Slope Stability			39.760582°	39.760582°
				-121.910303°	-121.910303°
DWR ID	DWR_NA0003_02_f_2015_10				
Comment Code					
S3 : Repair the levee slope damaged by vehicle traffic and prevent access where possible.					
Inspector Comment					

Photo 1 of 1 : FA_2018_NA0003_65_10_20180905_00005.jpg



View of the vehicle erosion along the landside slope.

LM Start	4.61	Rating **	M	Issue No.	51
LM End	4.61	Issue Type +	Ma	Location *	
Category	Supplemental			GPS Latitude/Longitude	
				Start	End
Item	DWR UCIP LMA Responsibility			39.748731°	39.748731°
				-121.917577°	-121.917577°
DWR ID	19245				
Comment Code					
Inspector Comment					
FS_ID:31028 DS_ID:19245 EP_NO: N/A Repair Type: Non-Urgent Crossing Status: Found UCIP Comments: Needs cleaning and clearing of debris. FIELD_STRUCT_DESC: 24-inch corrugated metal gravity drainage pipe through the levee, 10 feet below the crown. Flap gate on the waterside (WS) end. Concrete U-shaped headwall on each end. Grouted riprap apron on the landside (LS) end. Grouted riprap spillway on the WS end. [Additional Reference(s): DWR Levee Log, 1992. USACE Sacramento O&M Manual 504, May 1965, (HLM 4.77)]. FS Date: 2/25/2014					

Photo 1 of 3 : UCIP_FA_2018_31028_56913.jpg



WS view: U type concrete headwall, pipe, and flapgate on levee slope. Soil/mud on outlet box.

* Location LS : Land Side N/A : Not Applicable WS : Water Side CR : Crown	** Rating A : Acceptable M : Minimally Acceptable U : Unacceptable	N : Not Inspected/Rated C : Corrected A/W : Acceptable but Monitor & Maintain	+ Issue Type Ma : Maintenance Deficiency Ob : Design & System Obsolescence En : Enforcement
--	--	---	---

**Flood Control Project Maintenance
Levee Inspections**

Maintenance Issue Types Only, Levee Inspection Report By Mile - Fall 2018

Butte County Department of Public Works

Waterway	Bank	Unit Miles	Inspection Start/End	Inspector
Unit No. 02 Mud Creek	Left	7.96	09/18/2018 09/18/2018	Bob Duffey

LM Start	4.61	Rating **	M	Issue No.	51 (cont)	
LM End	4.61	Issue Type +	Ma	Location *		
Category	Supplemental			GPS Latitude/Longitude		
				Start		End
Item	DWR UCIP LMA Responsibility			39.748731 °		39.748731 °
				-121.917577 °		-121.917577 °
DWR ID	19245					
Comment Code						
Inspector Comment						
FS_ID:31028 DS_ID:19245 EP_NO: N/A Repair Type: Non-Urgent Crossing Status: Found UCIP Comments: Needs cleaning and clearing of debris. FIELD_STRUCT_DESC: 24-inch corrugated metal gravity drainage pipe through the levee, 10 feet below the crown. Flap gate on the waterside (WS) end. Concrete U-shaped headwall on each end. Grouted riprap apron on the landside (LS) end. Grouted riprap spillway on the WS end. [Additional Reference(s): DWR Levee Log, 1992. USACE Sacramento O&M Manual 504, May 1965, (HLM 4.77)]. FS Date: 2/25/2014						

Photo 2 of 3 : UCIP_FA_2018_31028_56912.jpg



LS view: U type concrete headwall and CMP on levee slope.

LM Start	4.61	Rating **	M	Issue No.	51 (cont)
LM End	4.61	Issue Type +	Ma	Location *	

Photo 3 of 3 : UCIP_FA_2018_31028_56911.jpg



LS view: inside view of CMP on levee slope. Needs cleaning and clearing.

* Location LS : Land Side N/A : Not Applicable WS : Water Side CR : Crown	** Rating A : Acceptable M : Minimally Acceptable U : Unacceptable	N : Not Inspected/Rated C : Corrected A/W : Acceptable but Monitor & Maintain	+ Issue Type Ma : Maintenance Deficiency Ob : Design & System Obsolescence En : Enforcement
--	--	---	---

**Flood Control Project Maintenance
Levee Inspections**

Maintenance Issue Types Only, Levee Inspection Report By Mile - Fall 2018

Butte County Department of Public Works

Waterway	Bank	Unit Miles	Inspection Start/End	Inspector
Unit No. 02 Mud Creek	Left	7.96	09/18/2018 09/18/2018	Bob Duffey

LM Start	5.64	Rating **	M	Issue No.	52	
LM End	5.64	Issue Type +	Ma	Location *		
Category	Supplemental			GPS Latitude/Longitude		
				Start	End	
Item	DWR UCIP LMA Responsibility			39.738898 °	39.738898 °	
				-121.930242 °	-121.930242 °	
DWR ID	19247					
Comment Code						
Inspector Comment						
FS_ID:31031 DS_ID:19247 EP_NO: N/A Repair Type: Non-Urgent Crossing Status: Found UCIP Comments: Needs cleaning and clearing of debris. FIELD_STRUCT_DESC: 24-inch corrugated metal gravity drainage pipe through the levee, 11.5 feet below the crown. Flap gate on the waterside (WS) end. Concrete U-shaped headwall on each end. Grouted riprap apron on the landside (LS) end. Grouted riprap spillway on the WS end. [Additional Reference(s): DWR Levee Log, 1992. USACE Sacramento O&M Manual 504, May 1965, (HLM 5.83)]. FS Date: 2/25/2014						

LM Start	5.64	Rating **	M	Issue No.	52 (cont)
LM End	5.64	Issue Type +	Ma	Location *	

Photo 1 of 3 : UCIP_FA_2018_31031_56917.jpg



WS view: U type concrete headwall, pipe, and flapgate on levee slope.
Soil/mud on outlet box.

Photo 2 of 3 : UCIP_FA_2018_31031_56916.jpg



LS view: U type concrete headwall and CMP on levee slope. Soil/mud on inlet box.

* Location LS : Land Side N/A : Not Applicable WS : Water Side CR : Crown	** Rating A : Acceptable M : Minimally Acceptable U : Unacceptable	N : Not Inspected/Rated C : Corrected A/W : Acceptable but Monitor & Maintain	+ Issue Type Ma : Maintenance Deficiency Ob : Design & System Obsolescence En : Enforcement
--	--	---	---

**Flood Control Project Maintenance
Levee Inspections**

Maintenance Issue Types Only, Levee Inspection Report By Mile - Fall 2018

Butte County Department of Public Works

Waterway	Bank	Unit Miles	Inspection Start/End	Inspector
Unit No. 02 Mud Creek	Left	7.96	09/18/2018 09/18/2018	Bob Duffey

LM Start	5.64	Rating **	M	Issue No.	52 (cont)	
LM End	5.64	Issue Type +	Ma	Location *		
Category	Supplemental			GPS Latitude/Longitude		
				Start		End
Item	DWR UCIP LMA Responsibility			39.738898 °		39.738898 °
				-121.930242 °		-121.930242 °
DWR ID	19247					
Comment Code						
Inspector Comment						
FS_ID:31031 DS_ID:19247 EP_NO: N/A Repair Type: Non-Urgent Crossing Status: Found UCIP Comments: Needs cleaning and clearing of debris. FIELD_STRUCT_DESC: 24-inch corrugated metal gravity drainage pipe through the levee, 11.5 feet below the crown. Flap gate on the waterside (WS) end. Concrete U-shaped headwall on each end. Grouted riprap apron on the landside (LS) end. Grouted riprap spillway on the WS end. [Additional Reference(s): DWR Levee Log, 1992. USACE Sacramento O&M Manual 504, May 1965, (HLM 5.83)]. FS Date: 2/25/2014						

Photo 3 of 3 : UCIP_FA_2018_31031_56915.jpg



LS view: inside view of CMP on levee slope. Needs cleaning and clearing.

LM Start	6.09	Rating **	M	Issue No.	53	
LM End	6.09	Issue Type +	Ma	Location *		
Category	Supplemental			GPS Latitude/Longitude		
				Start		End
Item	DWR UCIP LMA Responsibility			39.733297 °		39.733297 °
				-121.930411 °		-121.930411 °
DWR ID	19248					
Comment Code						
Inspector Comment						
FS_ID:41376 DS_ID:19248 EP_NO: N/A Repair Type: Non-Urgent Crossing Status: Found UCIP Comments: Needs cleaning and clearing of debris. FIELD_STRUCT_DESC: [Channel Slough Drainage Structure] 1 of 2: 42-inch corrugated metal gravity drainage pipe through the levee, 16 feet below the crown. Flap gate on the waterside (WS) end. Slide gate in a corrugated metal pipe (CMP) riser on the WS slope. Concrete U-shaped headwall on each end. Grouted riprap apron and rock revetment on the landside (LS) end. [Additional Reference(s): DWR Levee Log, 1992. USACE Sacramento O&M Manual 504, May 1965, (HLM 6.30)]. FS Date: 2/25/2014						

Photo 1 of 3 : UCIP_FA_2018_41376_56920.jpg



WS view: slide gates in CMP risers on levee slope.

* Location LS : Land Side N/A : Not Applicable WS : Water Side CR : Crown	** Rating A : Acceptable M : Minimally Acceptable U : Unacceptable	N : Not Inspected/Rated C : Corrected A/W : Acceptable but Monitor & Maintain	+ Issue Type Ma : Maintenance Deficiency Ob : Design & System Obsolescence En : Enforcement
--	--	---	---

**Flood Control Project Maintenance
Levee Inspections**

Maintenance Issue Types Only, Levee Inspection Report By Mile - Fall 2018

Butte County Department of Public Works

Waterway	Bank	Unit Miles	Inspection Start/End	Inspector
Unit No. 02 Mud Creek	Left	7.96	09/18/2018 09/18/2018	Bob Duffey

LM Start	6.09	Rating **	M	Issue No.	53 (cont)	
LM End	6.09	Issue Type +	Ma	Location *		
Category	Supplemental			GPS Latitude/Longitude		
				Start	End	
Item	DWR UCIP LMA Responsibility			39.733297°	39.733297°	
				-121.930411°	-121.930411°	
DWR ID	19248					
Comment Code						
Inspector Comment						
FS_ID:41376 DS_ID:19248 EP_NO: N/A Repair Type: Non-Urgent Crossing Status: Found UCIP Comments: Needs cleaning and clearing of debris. FIELD_STRUCT_DESC: [Channel Slough Drainage Structure] 1 of 2: 42-inch corrugated metal gravity drainage pipe through the levee, 16 feet below the crown. Flap gate on the waterside (WS) end. Slide gate in a corrugated metal pipe (CMP) riser on the WS slope. Concrete U-shaped headwall on each end. Grouted riprap apron and rock revetment on the landside (LS) end. [Additional Reference(s): DWR Levee Log, 1992. USACE Sacramento O&M Manual 504, May 1965, (HLM 6.30)]. FS Date: 2/25/2014						

LM Start	6.09	Rating **	M	Issue No.	53 (cont)
LM End	6.09	Issue Type +	Ma	Location *	

Photo 2 of 3 : UCIP_FA_2018_41376_56919.jpg



WS view: U type concrete headwall, pipes, and flapgates on levee slope. Vegetation debris on outlet box.

Photo 3 of 3 : UCIP_FA_2018_41376_56918.jpg



LS view: U type concrete headwall and CMPs on levee slope. Soil/mud on inlet box.

* Location LS : Land Side N/A : Not Applicable WS : Water Side CR : Crown	** Rating A : Acceptable M : Minimally Acceptable U : Unacceptable	N : Not Inspected/Rated C : Corrected A/W : Acceptable but Monitor & Maintain	+ Issue Type Ma : Maintenance Deficiency Ob : Design & System Obsolescence En : Enforcement
--	--	---	---

**Flood Control Project Maintenance
Levee Inspections**

Maintenance Issue Types Only, Levee Inspection Report By Mile - Fall 2018

Butte County Department of Public Works

Waterway	Bank	Unit Miles	Inspection Start/End	Inspector
Unit No. 02 Mud Creek	Left	7.96	09/18/2018 09/18/2018	Bob Duffey

LM Start	6.09	Rating **	M	Issue No.	54
LM End	6.09	Issue Type +	Ma	Location *	
Category	Supplemental			GPS Latitude/Longitude	
				Start	End
Item	DWR UCIP LMA Responsibility			39.733280 °	39.733280 °
				-121.930409 °	-121.930409 °
DWR ID	19259				
Comment Code					
Inspector Comment					
FS_ID:41377 DS_ID:19259 EP_NO: N/A Repair Type: Non-Urgent Crossing Status: Found UCIP Comments: Needs cleaning and clearing of debris. FIELD_STRUCT_DESC: [Channel Slough Drainage Structure] 2 of 2: 42-inch corrugated metal gravity drainage pipe through the levee, 16 feet below the crown. Flap gate on the waterside (WS) end. Slide gate in a corrugated metal pipe (CMP) riser on the WS slope. Concrete U-shaped headwall on each end. Grouted riprap apron and rock revetment on the landside (LS) end. [Additional Reference(s): DWR Levee Log, 1992. USACE Sacramento O&M Manual 504, May 1965, (HLM 6.30)]. FS Date: 2/25/2014					

LM Start	6.09	Rating **	M	Issue No.	54 (cont)
LM End	6.09	Issue Type +	Ma	Location *	

Photo 1 of 3 : UCIP_FA_2018_41377_56923.jpg



WS view: slide gates in CMP risers on levee slope.

Photo 2 of 3 : UCIP_FA_2018_41377_56922.jpg



LS view: U type concrete headwall and CMPs on levee slope. Vegetation on inlet box.

* Location LS : Land Side N/A : Not Applicable WS : Water Side CR : Crown	** Rating A : Acceptable M : Minimally Acceptable U : Unacceptable	N : Not Inspected/Rated C : Corrected A/W : Acceptable but Monitor & Maintain	+ Issue Type Ma : Maintenance Deficiency Ob : Design & System Obsolescence En : Enforcement
--	--	---	---

**Flood Control Project Maintenance
Levee Inspections**

Maintenance Issue Types Only, Levee Inspection Report By Mile - Fall 2018

Butte County Department of Public Works

Waterway	Bank	Unit Miles	Inspection Start/End	Inspector
Unit No. 02 Mud Creek	Left	7.96	09/18/2018 09/18/2018	Bob Duffey

LM Start	6.09	Rating **	M	Issue No.	54 (cont)	
LM End	6.09	Issue Type +	Ma	Location *		
Category	Supplemental			GPS Latitude/Longitude		
				Start		End
Item	DWR UCIP LMA Responsibility			39.733280 °		39.733280 °
				-121.930409 °		-121.930409 °
DWR ID	19259					
Comment Code						
Inspector Comment						
FS_ID:41377						
DS_ID:19259						
EP_NO: N/A						
Repair Type: Non-Urgent						
Crossing Status: Found						
UCIP Comments: Needs cleaning and clearing of debris.						
FIELD_STRUCT_DESC: [Channel Slough Drainage Structure] 2 of 2:						
42-inch corrugated metal gravity drainage pipe through the levee, 16						
feet below the crown. Flap gate on the waterside (WS) end. Slide gate						
in a corrugated metal pipe (CMP) riser on the WS slope. Concrete U-						
shaped headwall on each end. Grouted riprap apron and rock						
revetment on the landside (LS) end. [Additional Reference(s): DWR						
Levee Log, 1992. USACE Sacramento O&M Manual 504, May 1965,						
(HLM 6.30)].						
FS Date: 2/25/2014						

Photo 3 of 3 : UCIP_FA_2018_41377_56921.jpg



LS view: U type concrete headwall and CMPs on levee slope. Soil/mud on inlet box.

LM Start	6.15	Rating **	M	Issue No.	55
LM End	6.15	Issue Type +	Ma	Location *	
Category	Supplemental			GPS Latitude/Longitude	
				Start	End
Item	DWR UCIP LMA Responsibility			39.732515 °	39.732515 °
				-121.930373 °	-121.930373 °
DWR ID	19249				
Comment Code					
Inspector Comment					
FS_ID:31034 DS_ID:19249 EP_NO: N/A Repair Type: Non-Urgent Crossing Status: Found UCIP Comments: Needs cleaning and clearing of debris. FIELD_STRUCT_DESC: 24-inch corrugated metal gravity drainage pipe through the levee, 12 feet below the crown. Flap gate on the waterside (WS) end. Concrete U-shaped headwall on each end. Grouted riprap apron on the landside (LS) end. Grouted riprap spillway on the WS end. [Additional Reference(s): DWR Levee Log, 1992. USACE Sacramento O&M Manual 504, May 1965, (HLM 6.35)]. FS Date: 2/25/2014					

Photo 1 of 3 : UCIP_FA_2018_31034_56926.jpg



WS view: U type concrete headwall, pipe, and flapgate on levee slope.

* Location LS : Land Side N/A : Not Applicable WS : Water Side CR : Crown	** Rating A : Acceptable M : Minimally Acceptable U : Unacceptable	N : Not Inspected/Rated C : Corrected A/W : Acceptable but Monitor & Maintain	+ Issue Type Ma : Maintenance Deficiency Ob : Design & System Obsolescence En : Enforcement
--	--	---	---

**Flood Control Project Maintenance
Levee Inspections**

Maintenance Issue Types Only, Levee Inspection Report By Mile - Fall 2018

Butte County Department of Public Works

Waterway	Bank	Unit Miles	Inspection Start/End	Inspector
Unit No. 02 Mud Creek	Left	7.96	09/18/2018 09/18/2018	Bob Duffey

LM Start	6.15	Rating **	M	Issue No.	55 (cont)	
LM End	6.15	Issue Type +	Ma	Location *		
Category	Supplemental			GPS Latitude/Longitude		
				Start	End	
Item	DWR UCIP LMA Responsibility			39.732515 °	39.732515 °	
				-121.930373 °	-121.930373 °	
DWR ID	19249					
Comment Code						
Inspector Comment						
FS_ID:31034 DS_ID:19249 EP_NO: N/A Repair Type: Non-Urgent Crossing Status: Found UCIP Comments: Needs cleaning and clearing of debris. FIELD_STRUCT_DESC: 24-inch corrugated metal gravity drainage pipe through the levee, 12 feet below the crown. Flap gate on the waterside (WS) end. Concrete U-shaped headwall on each end. Grouted riprap apron on the landside (LS) end. Grouted riprap spillway on the WS end. [Additional Reference(s): DWR Levee Log, 1992. USACE Sacramento O&M Manual 504, May 1965, (HLM 6.35)]. FS Date: 2/25/2014						

Photo 2 of 3 : UCIP_FA_2018_31034_56925.jpg



LS view: U type concrete headwall and CMP on levee slope.

LM Start	6.15	Rating **	M	Issue No.	55 (cont)
LM End	6.15	Issue Type +	Ma	Location *	

Photo 3 of 3 : UCIP_FA_2018_31034_56924.jpg



LS view: inside view of CMP on levee slope. Needs cleaning and clearing.

* Location LS : Land Side N/A : Not Applicable WS : Water Side CR : Crown	** Rating A : Acceptable M : Minimally Acceptable U : Unacceptable	N : Not Inspected/Rated C : Corrected A/W : Acceptable but Monitor & Maintain	+ Issue Type Ma : Maintenance Deficiency Ob : Design & System Obsolescence En : Enforcement
--	--	---	---

**Flood Control Project Maintenance
Levee Inspections**

Maintenance Issue Types Only, Levee Inspection Report By Mile - Fall 2018

Butte County Department of Public Works

Waterway	Bank	Unit Miles	Inspection Start/End	Inspector
Unit No. 02 Mud Creek	Left	7.96	09/18/2018 09/18/2018	Bob Duffey

LM Start	6.43	Rating **	M	Issue No.	56	
LM End	6.43	Issue Type +	Ma	Location *		
Category	Supplemental			GPS Latitude/Longitude		
				Start		End
Item	DWR UCIP LMA Responsibility			39.728812 °	39.728812 °	
				-121.932623 °	-121.932623 °	
DWR ID	19251					
Comment Code						
Inspector Comment						
FS_ID:31085 DS_ID:19251 EP_NO: N/A Repair Type: Non-Urgent Crossing Status: Found UCIP Comments: Needs cleaning and clearing of debris. FIELD_STRUCT_DESC: 24-inch corrugated metal gravity drainage pipe through the levee, 15.5 feet below the crown. Flap gate on the waterside (WS) end. Concrete U-shaped headwall on each end. Grouted riprap apron on the landside (LS) end. Grouted riprap spillway on the WS end. [Additional Reference(s): DWR Levee Log, 1992. USACE Sacramento O&M Manual 504, May 1965, (HLM 6.65)]. FS Date: 2/25/2014						

LM Start	6.43	Rating **	M	Issue No.	56 (cont)
LM End	6.43	Issue Type +	Ma	Location *	

Photo 1 of 3 : UCIP_FA_2018_31085_56988.jpg



WS view: U type concrete headwall, pipe, and flapgate on levee slope.
Soil/mud on outlet box.

Photo 2 of 3 : UCIP_FA_2018_31085_56987.jpg



LS view: U type concrete headwall and CMP on levee slope. Soil/mud on inlet box.

* Location LS : Land Side N/A : Not Applicable WS : Water Side CR : Crown	** Rating A : Acceptable M : Minimally Acceptable U : Unacceptable	N : Not Inspected/Rated C : Corrected A/W : Acceptable but Monitor & Maintain	+ Issue Type Ma : Maintenance Deficiency Ob : Design & System Obsolescence En : Enforcement
--	--	---	---

**Flood Control Project Maintenance
Levee Inspections**

Maintenance Issue Types Only, Levee Inspection Report By Mile - Fall 2018

Butte County Department of Public Works

Waterway	Bank	Unit Miles	Inspection Start/End	Inspector
Unit No. 02 Mud Creek	Left	7.96	09/18/2018 09/18/2018	Bob Duffey

LM Start	6.43	Rating **	M	Issue No.	56 (cont)	
LM End	6.43	Issue Type +	Ma	Location *		
Category	Supplemental			GPS Latitude/Longitude		
				Start	End	
Item	DWR UCIP LMA Responsibility			39.728812 °	39.728812 °	
				-121.932623 °	-121.932623 °	
DWR ID	19251					
Comment Code						
Inspector Comment						
FS_ID:31085 DS_ID:19251 EP_NO: N/A Repair Type: Non-Urgent Crossing Status: Found UCIP Comments: Needs cleaning and clearing of debris. FIELD_STRUCT_DESC: 24-inch corrugated metal gravity drainage pipe through the levee, 15.5 feet below the crown. Flap gate on the waterside (WS) end. Concrete U-shaped headwall on each end. Grouted riprap apron on the landside (LS) end. Grouted riprap spillway on the WS end. [Additional Reference(s): DWR Levee Log, 1992. USACE Sacramento O&M Manual 504, May 1965, (HLM 6.65)]. FS Date: 2/25/2014						

Photo 3 of 3 : UCIP_FA_2018_31085_56986.jpg



LS view: inside view of CMP on levee slope. Needs cleaning and clearing.

LM Start	6.94	Rating **	M	Issue No.	57
LM End	6.94	Issue Type +	Ma	Location *	
Category	Supplemental			GPS Latitude/Longitude	
				Start	End
Item	DWR UCIP LMA Responsibility			39.722798 °	39.722798 °
				-121.937828 °	-121.937828 °
DWR ID	19252				
Comment Code					
Inspector Comment					
FS_ID:31103 DS_ID:19252 EP_NO: N/A Repair Type: Non-Urgent Crossing Status: Found UCIP Comments: Needs cleaning and clearing of debris. FIELD_STRUCT_DESC: 24-inch corrugated metal gravity drainage pipe through the levee, 15 feet below the crown. Flap gate on the waterside (WS) end. Concrete U-shaped headwall on each end. Grouted riprap apron on the landside (LS) end. Grouted riprap spillway on the WS end. [Additional Reference(s): DWR Levee Log, 1992. USACE Sacramento O&M Manual 504, May 1965, (HLM 7.17)]. FS Date: 2/25/2014					

Photo 1 of 3 : UCIP_FA_2018_31103_57002.jpg



WS view: U type concrete headwall, pipe, and flapgate on levee slope. Soil/mud on outlet box. Vegetation debris blocking outlet box

* Location LS : Land Side N/A : Not Applicable WS : Water Side CR : Crown	** Rating A : Acceptable M : Minimally Acceptable U : Unacceptable	N : Not Inspected/Rated C : Corrected A/W : Acceptable but Monitor & Maintain	+ Issue Type Ma : Maintenance Deficiency Ob : Design & System Obsolescence En : Enforcement
--	--	---	---

**Flood Control Project Maintenance
Levee Inspections**

Maintenance Issue Types Only, Levee Inspection Report By Mile - Fall 2018

Butte County Department of Public Works

Waterway	Bank	Unit Miles	Inspection Start/End	Inspector
Unit No. 02 Mud Creek	Left	7.96	09/18/2018 09/18/2018	Bob Duffey

LM Start	6.94	Rating **	M	Issue No.	57 (cont)
LM End	6.94	Issue Type +	Ma	Location *	
Category	Supplemental			GPS Latitude/Longitude	
				Start	End
Item	DWR UCIP LMA Responsibility			39.722798 °	39.722798 °
				-121.937828 °	-121.937828 °
DWR ID	19252				
Comment Code					
Inspector Comment					
FS_ID:31103 DS_ID:19252 EP_NO: N/A Repair Type: Non-Urgent Crossing Status: Found UCIP Comments: Needs cleaning and clearing of debris. FIELD_STRUCT_DESC: 24-inch corrugated metal gravity drainage pipe through the levee, 15 feet below the crown. Flap gate on the waterside (WS) end. Concrete U-shaped headwall on each end. Grouted riprap apron on the landside (LS) end. Grouted riprap spillway on the WS end. [Additional Reference(s): DWR Levee Log, 1992. USACE Sacramento O&M Manual 504, May 1965, (HLM 7.17)]. FS Date: 2/25/2014					

LM Start	6.94	Rating **	M	Issue No.	57 (cont)
LM End	6.94	Issue Type +	Ma	Location *	

Photo 2 of 3 : UCIP_FA_2018_31103_57001.jpg



LS view: U type concrete headwall and CMP on levee slope. Soil/mud on inlet box.

Photo 3 of 3 : UCIP_FA_2018_31103_57000.jpg



LS view: inside view of CMP on levee slope. Needs cleaning and clearing.

* Location LS : Land Side N/A : Not Applicable WS : Water Side CR : Crown	** Rating A : Acceptable M : Minimally Acceptable U : Unacceptable	N : Not Inspected/Rated C : Corrected A/W : Acceptable but Monitor & Maintain	+ Issue Type Ma : Maintenance Deficiency Ob : Design & System Obsolescence En : Enforcement
--	--	---	---

**Flood Control Project Maintenance
Levee Inspections**

Maintenance Issue Types Only, Levee Inspection Report By Mile - Fall 2018

Butte County Department of Public Works

Waterway	Bank	Unit Miles	Inspection Start/End	Inspector
Unit No. 02 Mud Creek	Left	7.96	09/18/2018 09/18/2018	Bob Duffey

LM Start	7.17	Rating **	C	Issue No.	40
LM End	7.22	Issue Type +	Ma	Location *	LS
Category	Earthen Levee			GPS Latitude/Longitude	
				Start	End
Item	Vegetation			39.719593 °	39.718933 °
				-121.938137 °	-121.937635 °
DWR ID	DWR_NA0003_02_f_2016_40				
Comment Code					
V2 : Remove the wild growth other than native grasses from the levee slopes.					
Inspector Comment					
The vegetation was removed from the landside toe.					

No Photos

LM Start	7.22	Rating **	M	Issue No.	58	
LM End	7.22	Issue Type +	Ma	Location *		
Category	Supplemental			GPS Latitude/Longitude		
				Start		End
Item	DWR UCIP LMA Responsibility			39.718882 °		39.718882 °
				-121.937602 °		-121.937602 °
DWR ID	19253					
Comment Code						
Inspector Comment						
FS_ID:32085 DS_ID:19253 EP_NO: N/A Repair Type: Non-Urgent Crossing Status: Found UCIP Comments: Slide gates in CMP risers on waterside shoulder.Needs cleaning and clearing of debris. FIELD_STRUCT_DESC: 1 of 3: 48-inch corrugated metal gravity drainage pipe through the levee, 18 feet below the crown. Flap gate on the waterside (WS) end. Slide gate in a corrugated metal pipe (CMP) riser on the WS shoulder. Concrete U-shaped headwall on each end. Grouted riprap apron on the landside (LS) end. Grouted riprap spillway on the WS end. [Additional Reference(s): DWR Levee Log, 1992. USACE Sacramento O&M Manual 504, May 1965, (HLM 7.46)]. FS Date: 2/25/2014						

Photo 1 of 3 : UCIP_FA_2018_32085_58585.jpg



WS view: slide gates in CMP risers on waterside shoulder.

* Location LS : Land Side N/A : Not Applicable WS : Water Side CR : Crown	** Rating A : Acceptable M : Minimally Acceptable U : Unacceptable N : Not Inspected/Rated C : Corrected A/W : Acceptable but Monitor & Maintain	+ Issue Type Ma : Maintenance Deficiency Ob : Design & System Obsolescence En : Enforcement
--	---	---

**Flood Control Project Maintenance
Levee Inspections**

Maintenance Issue Types Only, Levee Inspection Report By Mile - Fall 2018

Butte County Department of Public Works

Waterway	Bank	Unit Miles	Inspection Start/End	Inspector
Unit No. 02 Mud Creek	Left	7.96	09/18/2018 09/18/2018	Bob Duffey

LM Start	7.22	Rating **	M	Issue No.	58 (cont)	
LM End	7.22	Issue Type +	Ma	Location *		
Category	Supplemental			GPS Latitude/Longitude		
				Start		End
Item	DWR UCIP LMA Responsibility			39.718882 °	39.718882 °	
				-121.937602 °	-121.937602 °	
DWR ID	19253					
Comment Code						
Inspector Comment						
FS_ID:32085 DS_ID:19253 EP_NO: N/A Repair Type: Non-Urgent Crossing Status: Found UCIP Comments: Slide gates in CMP risers on waterside shoulder.Needs cleaning and clearing of debris. FIELD_STRUCT_DESC: 1 of 3: 48-inch corrugated metal gravity drainage pipe through the levee, 18 feet below the crown. Flap gate on the waterside (WS) end. Slide gate in a corrugated metal pipe (CMP) riser on the WS shoulder. Concrete U-shaped headwall on each end. Grouted riprap apron on the landside (LS) end. Grouted riprap spillway on the WS end. [Additional Reference(s): DWR Levee Log, 1992. USACE Sacramento O&M Manual 504, May 1965, (HLM 7.46)]. FS Date: 2/25/2014						

LM Start	7.22	Rating **	M	Issue No.	58 (cont)
LM End	7.22	Issue Type +	Ma	Location *	

Photo 2 of 3 : UCIP_FA_2018_32085_58584.jpg



WS view: U type concrete headwall, pipes, and flapgates on levee slope. Soil/mud on outlet box. Vegetation debris blocking outlet box

Photo 3 of 3 : UCIP_FA_2018_32085_58586.jpg



LS view: U type concrete headwall and CMPs on levee slope. Soil/mud on inlet box.

* Location LS : Land Side N/A : Not Applicable WS : Water Side CR : Crown	** Rating A : Acceptable M : Minimally Acceptable U : Unacceptable	N : Not Inspected/Rated C : Corrected A/W : Acceptable but Monitor & Maintain	+ Issue Type Ma : Maintenance Deficiency Ob : Design & System Obsolescence En : Enforcement
--	--	---	---

**Flood Control Project Maintenance
Levee Inspections**

Maintenance Issue Types Only, Levee Inspection Report By Mile - Fall 2018

Butte County Department of Public Works

Waterway	Bank	Unit Miles	Inspection Start/End	Inspector
Unit No. 02 Mud Creek	Left	7.96	09/18/2018 09/18/2018	Bob Duffey

LM Start	7.23	Rating **	M	Issue No.	59
LM End	7.23	Issue Type +	Ma	Location *	
Category	Supplemental			GPS Latitude/Longitude	
				Start	End
Item	DWR UCIP LMA Responsibility			39.718849 °	39.718849 °
				-121.937580 °	-121.937580 °
DWR ID	19261				
Comment Code					
Inspector Comment					
FS_ID:32087 DS_ID:19261 EP_NO: N/A Repair Type: Non-Urgent Crossing Status: Found UCIP Comments: Slide gates in CMP risers on waterside shoulder. Needs cleaning and clearing on both pipe ends. FIELD_STRUCT_DESC: 3 of 3: 48-inch corrugated metal gravity drainage pipe through the levee, 18 feet below the crown. Flap gate on the waterside (WS) end. Slide gate in a corrugated metal pipe (CMP) riser on the WS shoulder. Concrete U-shaped headwall on each end. Grouted riprap apron on the landside (LS) end. Grouted riprap spillway on the WS end. [Additional Reference(s): DWR Levee Log, 1992. USACE Sacramento O&M Manual 504, May 1965, (HLM 7.46)]. FS Date: 2/25/2014					

Photo 1 of 3 : UCIP_FA_2018_32087_58592.jpg



WS view: slide gates in CMP risers on waterside shoulder.

LM Start	7.23	Rating **	M	Issue No.	59 (cont)
LM End	7.23	Issue Type +	Ma	Location *	

Photo 2 of 3 : UCIP_FA_2018_32087_58591.jpg



WS view: U type concrete headwall, pipes, and flapgates on levee slope.
Soil/mud on outlet box. Vegetation debris on outlet box

* Location LS : Land Side N/A : Not Applicable WS : Water Side CR : Crown	** Rating A : Acceptable M : Minimally Acceptable U : Unacceptable	N : Not Inspected/Rated C : Corrected A/W : Acceptable but Monitor & Maintain	+ Issue Type Ma : Maintenance Deficiency Ob : Design & System Obsolescence En : Enforcement
--	--	---	---

**Flood Control Project Maintenance
Levee Inspections**

Maintenance Issue Types Only, Levee Inspection Report By Mile - Fall 2018

Butte County Department of Public Works

Waterway	Bank	Unit Miles	Inspection Start/End	Inspector
Unit No. 02 Mud Creek	Left	7.96	09/18/2018 09/18/2018	Bob Duffey

LM Start	7.23	Rating **	M	Issue No.	59 (cont)	
LM End	7.23	Issue Type +	Ma	Location *		
Category	Supplemental			GPS Latitude/Longitude		
				Start		End
Item	DWR UCIP LMA Responsibility			39.718849 °		39.718849 °
				-121.937580 °		-121.937580 °
DWR ID	19261					
Comment Code						
Inspector Comment						
FS_ID:32087 DS_ID:19261 EP_NO: N/A Repair Type: Non-Urgent Crossing Status: Found UCIP Comments: Slide gates in CMP risers on waterside shoulder. Needs cleaning and clearing on both pipe ends. FIELD_STRUCT_DESC: 3 of 3: 48-inch corrugated metal gravity drainage pipe through the levee, 18 feet below the crown. Flap gate on the waterside (WS) end. Slide gate in a corrugated metal pipe (CMP) riser on the WS shoulder. Concrete U-shaped headwall on each end. Grouted riprap apron on the landside (LS) end. Grouted riprap spillway on the WS end. [Additional Reference(s): DWR Levee Log, 1992. USACE Sacramento O&M Manual 504, May 1965, (HLM 7.46)]. FS Date: 2/25/2014						

Photo 3 of 3 : UCIP_FA_2018_32087_58590.jpg



LS view: U type concrete headwall and CMPs on levee slope. Soil/mud on inlet box.

LM Start	7.23	Rating **	M	Issue No.	60
LM End	7.23	Issue Type +	Ma	Location *	
Category	Supplemental			GPS Latitude/Longitude	
				Start	End
Item	DWR UCIP LMA Responsibility			39.718862 °	39.718862 °
				-121.937594 °	-121.937594 °
DWR ID	19260				
Comment Code					
Inspector Comment					
FS_ID:32086 DS_ID:19260 EP_NO: N/A Repair Type: Non-Urgent Crossing Status: Found UCIP Comments: Slide gates in CMP risers on waterside shoulder.Needs cleaning and clearing of debris. FIELD_STRUCT_DESC: 2 of 3: 48-inch corrugated metal gravity drainage pipe through the levee, 18 feet below the crown. Flap gate on the waterside (WS) end. Slide gate in a corrugated metal pipe (CMP) riser on the WS shoulder. Concrete U-shaped headwall on each end. Grouted riprap apron on the landside (LS) end. Grouted riprap spillway on the WS end. [Additional Reference(s): DWR Levee Log, 1992. USACE Sacramento O&M Manual 504, May 1965, (HLM 7.46)]. FS Date: 2/25/2014					

Photo 1 of 3 : UCIP_FA_2018_32086_58589.jpg



WS view: slide gates in CMP risers on waterside shoulder.

* Location LS : Land Side N/A : Not Applicable WS : Water Side CR : Crown	** Rating A : Acceptable M : Minimally Acceptable U : Unacceptable	N : Not Inspected/Rated C : Corrected A/W : Acceptable but Monitor & Maintain	+ Issue Type Ma : Maintenance Deficiency Ob : Design & System Obsolescence En : Enforcement
--	--	---	---

**Flood Control Project Maintenance
Levee Inspections**

Maintenance Issue Types Only, Levee Inspection Report By Mile - Fall 2018

Butte County Department of Public Works

Waterway	Bank	Unit Miles	Inspection Start/End	Inspector
Unit No. 02 Mud Creek	Left	7.96	09/18/2018 09/18/2018	Bob Duffey

LM Start	7.23	Rating **	M	Issue No.	60 (cont)	
LM End	7.23	Issue Type +	Ma	Location *		
Category	Supplemental			GPS Latitude/Longitude		
				Start		End
Item	DWR UCIP LMA Responsibility			39.718862 °		39.718862 °
				-121.937594 °		-121.937594 °
DWR ID	19260					
Comment Code						
Inspector Comment						
FS_ID:32086 DS_ID:19260 EP_NO: N/A Repair Type: Non-Urgent Crossing Status: Found UCIP Comments: Slide gates in CMP risers on waterside shoulder.Needs cleaning and clearing of debris. FIELD_STRUCT_DESC: 2 of 3: 48-inch corrugated metal gravity drainage pipe through the levee, 18 feet below the crown. Flap gate on the waterside (WS) end. Slide gate in a corrugated metal pipe (CMP) riser on the WS shoulder. Concrete U-shaped headwall on each end. Grouted riprap apron on the landside (LS) end. Grouted riprap spillway on the WS end. [Additional Reference(s): DWR Levee Log, 1992. USACE Sacramento O&M Manual 504, May 1965, (HLM 7.46)]. FS Date: 2/25/2014						

LM Start	7.23	Rating **	M	Issue No.	60 (cont)
LM End	7.23	Issue Type +	Ma	Location *	

Photo 2 of 3 : UCIP_FA_2018_32086_58588.jpg



WS view: U type concrete headwall, pipes, and flapgates on levee slope. Soil/mud on outlet box. Vegetation debris on outlet box

Photo 3 of 3 : UCIP_FA_2018_32086_58587.jpg



LS view: U type concrete headwall and CMPs on levee slope. Soil/mud on inlet box.

* Location LS : Land Side N/A : Not Applicable WS : Water Side CR : Crown	** Rating A : Acceptable M : Minimally Acceptable U : Unacceptable	N : Not Inspected/Rated C : Corrected A/W : Acceptable but Monitor & Maintain	+ Issue Type Ma : Maintenance Deficiency Ob : Design & System Obsolescence En : Enforcement
--	--	---	---

**Flood Control Project Maintenance
Levee Inspections**

Maintenance Issue Types Only, Levee Inspection Report By Mile - Fall 2018

Butte County Department of Public Works

Waterway	Bank	Unit Miles	Inspection Start/End	Inspector
Unit No. 02 Mud Creek	Left	7.96	09/18/2018 09/18/2018	Bob Duffey

LM Start	7.77	Rating **	M	Issue No.	61	
LM End	7.77	Issue Type +	Ma	Location *		
Category	Supplemental			GPS Latitude/Longitude		
				Start	End	
Item	DWR UCIP LMA Responsibility			39.711436 °	39.711436 °	
				-121.937135 °	-121.937135 °	
DWR ID	19254					
Comment Code						
Inspector Comment						
FS_ID:31129						
DS_ID:19254						
EP_NO: N/A						
Repair Type: Non-Urgent						
Crossing Status: Found						
UCIP Comments: Debris in inlet pipe, needs cleaning and clearing.						
FIELD_STRUCT_DESC: 24-inch corrugated metal gravity drainage pipe						
through the levee, 18 feet below the crown. Flap gate on the waterside						
(WS) end. Concrete U-shaped headwall on each end. Grouted riprap						
apron on the landside (LS) end. Grouted riprap spillway on the WS end.						
[Additional Reference(s): DWR Levee Log, 1992. USACE Sacramento						
O&M Manual 504, May 1965, (HLM 8.09)].						
FS Date: 2/25/2014						

LM Start	7.77	Rating **	M	Issue No.	61 (cont)
LM End	7.77	Issue Type +	Ma	Location *	

Photo 1 of 2 : UCIP_FA_2018_31129_57036.jpg



WS view: U type concrete headwall, pipe, and flapgate on levee slope.
Soil/mud on outlet box.

Photo 2 of 2 : UCIP_FA_2018_31129_57035.jpg



LS view: U type concrete headwall and CMP on levee slope. Soil/mud and vegetation on inlet box.

* Location LS : Land Side N/A : Not Applicable WS : Water Side CR : Crown	** Rating A : Acceptable M : Minimally Acceptable U : Unacceptable	N : Not Inspected/Rated C : Corrected A/W : Acceptable but Monitor & Maintain	+ Issue Type Ma : Maintenance Deficiency Ob : Design & System Obsolescence En : Enforcement
--	--	---	---

**Flood Control Project Maintenance
Levee Inspections**

Maintenance Issue Types Only, Levee Inspection Report By Mile - Fall 2018

Butte County Department of Public Works

Waterway	Bank	Unit Miles	Inspection Start/End	Inspector
Unit No. 02A Channel Slough	Left	0.26	09/18/2018 09/18/2018	Bob Duffey

LM Start	0.05	Rating **	A	Issue No.	3
LM End	0.05	Issue Type +	Ma	Location *	LS
Category	Earthen Levee			GPS Latitude/Longitude	
				Start	End
Item	Vegetation			39.733567 °	39.733567 °
				-121.929850 °	-121.929850 °
DWR ID	DWR_NA0003_02A_f_2018_3				
Comment Code					
V1 : Control annual grass and weeds on the levee slopes and easements.					
Inspector Comment					
The vegetation was removed from both slopes.					

Photo 1 of 1 : FA_2018_NA0003_66_3_20181001_00001.jpg



View of no vegetation on both slopes.

* Location LS : Land Side N/A : Not Applicable WS : Water Side CR : Crown	** Rating A : Acceptable M : Minimally Acceptable U : Unacceptable	N : Not Inspected/Rated C : Corrected A/W : Acceptable but Monitor & Maintain	+ Issue Type Ma : Maintenance Deficiency Ob : Design & System Obsolescence En : Enforcement
--	--	---	---

**Flood Control Project Maintenance
Levee Inspections**

Maintenance Issue Types Only, Levee Inspection Report By Mile - Fall 2018

Butte County Department of Public Works

Waterway	Bank	Unit Miles	Inspection Start/End	Inspector
Unit No. 03 Sycamore and Sheep Hollow Creeks	Right	4.05	09/18/2018 09/18/2018	Bob Duffey

LM Start	0.02	Rating **	M	Issue No.	12
LM End	0.02	Issue Type +	Ma	Location *	LS
Category	Earthen Levee			GPS Latitude/Longitude	
				Start	End
Item	Slope Stability			39.785970 °	39.785970 °
				-121.882797 °	-121.882797 °
DWR ID	DWR_NA0003_03_f_2015_12				
Comment Code					
S3 : Repair the levee slope damaged by vehicle traffic and prevent access where possible.					
Inspector Comment					
Repair the erosion on both slopes caused by motorcycle traffic.					

Photo 1 of 1 : FA_2018_NA0003_67_12_20180905_00002.jpg



View of the erosion on both slopes caused by motorcycle traffic.

LM Start	0.07	Rating **	M	Issue No.	3
LM End	0.07	Issue Type +	Ma	Location *	WS
Category	Earthen Levee			GPS Latitude/Longitude	
				Start	End
Item	Slope Stability			39.786068°	39.786068°
				-121.881828°	-121.881828°
DWR ID	DWR_NA0003_03_s_2012_3				
Comment Code					
S3 : Repair the levee slope damaged by vehicle traffic and prevent access where possible.					
Inspector Comment					
Repair the erosion on landside slope caused by motorcycle traffic.					

Photo 1 of 1 : FA_2018_NA0003_67_3_20180905_00001.jpg



View of the erosion caused by motorcycles on the land side slope.

* Location
LS : Land Side N/A : Not Applicable
WS : Water Side
CR : Crown

** Rating
A : Acceptable N : Not Inspected/Rated
M : Minimally Acceptable C : Corrected
U : Unacceptable A/W : Acceptable but Monitor & Maintain

+ Issue Type
Ma : Maintenance Deficiency
Ob : Design & System Obsolescence
En : Enforcement

**Flood Control Project Maintenance
Levee Inspections**

Maintenance Issue Types Only, Levee Inspection Report By Mile - Fall 2018

Butte County Department of Public Works

Waterway	Bank	Unit Miles	Inspection Start/End	Inspector
Unit No. 03 Sycamore and Sheep Hollow Creeks	Right	4.05	09/18/2018 09/18/2018	Bob Duffey

LM Start	0.10	Rating **	A/W	Issue No.	24	
LM End	0.10	Issue Type +	Ma	Location *		
Category	Supplemental			GPS Latitude/Longitude		
				Start	End	
Item	DWR UCIP LMA Responsibility			39.786195°	39.786195°	
				-121.881325°	-121.881325°	
DWR ID	19262					
Comment Code						
Inspector Comment						
FS_ID:51844 DS_ID:19262 EP_NO: N/A Repair Type: No Action Needed Crossing Status: Found UCIP Comments: 05/16/2017 Crossing has been downgraded from Non-Urgent to No Action Needed. The flap gate appears to be in good working order based on the photos, and the small pile of debris not enough to warrant Non-Urgent rating. (K. Fazel - UCIP)03/11/2014:Slide gate in CMP riser on waterside.The culvert was working during field inspection. (P. Amatya - DWR) FIELD_STRUCT_DESC: 42-inch corrugated metal gravity drainage pipe through the levee, 14 feet below the crown. Flap gate on the waterside (WS) end. Slide gate in a corrugated metal pipe (CMP) riser on the WS slope. Concrete U-shaped headwall on each end. Grouted riprap apron on the landside (LS) end. Grouted riprap spillway on the WS end. [Additional Reference(s): DWR Levee Log, 1992. USACE Sacramento O&M Manual 504, May 1965, (HLM 0.09)]. FS Date: 3/11/2014						

LM Start	0.10	Rating **	A/W	Issue No.	24 (cont)
LM End	0.10	Issue Type +	Ma	Location *	

Photo 1 of 3 : UCIP_FA_2018_51844_58602.jpg



WS view: U type concrete headwall, pipe, and flapgate on levee slope.

Photo 2 of 3 : UCIP_FA_2018_51844_58601.jpg



WS view: U type concrete headwall of CMP culvert on levee slope.
Grouted riprap levee slope and spillway.

* Location LS : Land Side N/A : Not Applicable WS : Water Side CR : Crown	** Rating A : Acceptable M : Minimally Acceptable U : Unacceptable	N : Not Inspected/Rated C : Corrected A/W : Acceptable but Monitor & Maintain	+ Issue Type Ma : Maintenance Deficiency Ob : Design & System Obsolescence En : Enforcement
--	--	---	---

**Flood Control Project Maintenance
Levee Inspections**

Maintenance Issue Types Only, Levee Inspection Report By Mile - Fall 2018

Butte County Department of Public Works

Waterway	Bank	Unit Miles	Inspection Start/End	Inspector
Unit No. 03 Sycamore and Sheep Hollow Creeks	Right	4.05	09/18/2018 09/18/2018	Bob Duffey

LM Start	0.10	Rating **	A/W	Issue No.	24 (cont)	
LM End	0.10	Issue Type +	Ma	Location *		
Category	Supplemental			GPS Latitude/Longitude		
				Start	End	
Item	DWR UCIP LMA Responsibility			39.786195°	39.786195°	
				-121.881325°	-121.881325°	
DWR ID	19262					
Comment Code						
Inspector Comment						
FS_ID:51844 DS_ID:19262 EP_NO: N/A Repair Type: No Action Needed Crossing Status: Found UCIP Comments: 05/16/2017 Crossing has been downgraded from Non-Urgent to No Action Needed. The flap gate appears to be in good working order based on the photos, and the small pile of debris not enough to warrant Non-Urgent rating. (K. Fazel - UCIP)03/11/2014:Slide gate in CMP riser on waterside.The culvert was working during field inspection. (P. Amatya - DWR) FIELD_STRUCT_DESC: 42-inch corrugated metal gravity drainage pipe through the levee, 14 feet below the crown. Flap gate on the waterside (WS) end. Slide gate in a corrugated metal pipe (CMP) riser on the WS slope. Concrete U-shaped headwall on each end. Grouted riprap apron on the landside (LS) end. Grouted riprap spillway on the WS end. [Additional Reference(s): DWR Levee Log, 1992. USACE Sacramento O&M Manual 504, May 1965, (HLM 0.09)]. FS Date: 3/11/2014						

Photo 3 of 3 : UCIP_FA_2018_51844_58600.jpg



WS view: slide gate in CMP riser on waterside shoulder.

LM Start	0.35	Rating **	M	Issue No.	15
LM End	0.35	Issue Type +	Ma	Location *	LS
Category	Earthen Levee			GPS Latitude/Longitude	
				Start	End
Item	Trim / Thin Trees			39.785704°	39.785704°
				-121.877004°	-121.877004°
DWR ID	DWR_NA0003_03_f_2016_15				
Comment Code					
T1 : Trim trees to at least five feet above ground level.					
Inspector Comment					

Photo 1 of 1 : FA_2018_NA0003_67_15_20180905_00004.jpg



View of the overgrown tree along the landside slope.

* Location LS : Land Side N/A : Not Applicable WS : Water Side CR : Crown	** Rating A : Acceptable M : Minimally Acceptable U : Unacceptable	N : Not Inspected/Rated C : Corrected A/W : Acceptable but Monitor & Maintain	+ Issue Type Ma : Maintenance Deficiency Ob : Design & System Obsolescence En : Enforcement
--	--	---	---

**Flood Control Project Maintenance
Levee Inspections**

Maintenance Issue Types Only, Levee Inspection Report By Mile - Fall 2018

Butte County Department of Public Works

Waterway	Bank	Unit Miles	Inspection Start/End	Inspector
Unit No. 03 Sycamore and Sheep Hollow Creeks	Right	4.05	09/18/2018 09/18/2018	Bob Duffey

LM Start	0.39	Rating **	A/W	Issue No.	25	
LM End	0.39	Issue Type +	Ma	Location *		
Category	Supplemental			GPS Latitude/Longitude		
				Start	End	
Item	DWR UCIP LMA Responsibility			39.785262 °	39.785262 °	
				-121.876622 °	-121.876622 °	
DWR ID	19278					
Comment Code						
Inspector Comment						
FS_ID:32104						
DS_ID:19278						
EP_NO: N/A						
Repair Type: No Action Needed						
Crossing Status: Found						
UCIP Comments: Slide gate in CMP riser on waterside.The culvert was working during the field visit.						
FIELD_STRUCT_DESC: 1 of 3: 48-inch corrugated metal gravity drainage pipe through the levee, 11.7 feet below the crown. Slide gate in a riser well on the waterside (WS) slope. Concrete U-shaped headwall on each end. Flap gate on the WS end. Grouted riprap outlet channel on the WS. [Additional Reference(s): DWR Levee Log, 1992. USACE Sacramento O&M Manual 504, May 1965, (HLM 0.39)].						
FS Date: 3/11/2014						

LM Start	0.39	Rating **	A/W	Issue No.	25 (cont)
LM End	0.39	Issue Type +	Ma	Location *	

Photo 1 of 2 : UCIP_FA_2018_32104_58606.jpg



WS view: U type concrete headwall and three CMPs with slide gates on levee slope. Grouted riprap spillway.

Photo 2 of 2 : UCIP_FA_2018_32104_58605.jpg



LS view: U type concrete headwall and three CMPs on levee slope. Soil/mud on inlet box.

* Location LS : Land Side N/A : Not Applicable WS : Water Side CR : Crown	** Rating A : Acceptable M : Minimally Acceptable U : Unacceptable N : Not Inspected/Rated C : Corrected A/W : Acceptable but Monitor & Maintain	+ Issue Type Ma : Maintenance Deficiency Ob : Design & System Obsolescence En : Enforcement
--	---	---

**Flood Control Project Maintenance
Levee Inspections**

Maintenance Issue Types Only, Levee Inspection Report By Mile - Fall 2018

Butte County Department of Public Works

Waterway	Bank	Unit Miles	Inspection Start/End	Inspector
Unit No. 03 Sycamore and Sheep Hollow Creeks	Right	4.05	09/18/2018 09/18/2018	Bob Duffey

LM Start	0.39	Rating **	A/W	Issue No.	26	
LM End	0.39	Issue Type +	Ma	Location *		
Category	Supplemental			GPS Latitude/Longitude		
				Start	End	
Item	DWR UCIP LMA Responsibility			39.785246 °	39.785246 °	
				-121.876609 °	-121.876609 °	
DWR ID	19277					
Comment Code						
Inspector Comment						
FS_ID:32105						
DS_ID:19277						
EP_NO: N/A						
Repair Type: No Action Needed						
Crossing Status: Found						
UCIP Comments: Slide gate in CMP riser on waterside.The culvert was working during the field visit.						
FIELD_STRUCT_DESC: 2 of 3: 48-inch corrugated metal gravity drainage pipe through the levee, 11.7 feet below the crown. Slide gate in a riser well on the waterside (WS) slope. Concrete U-shaped headwall on each end. Flap gate on the WS end. Grouted riprap outlet channel on the WS. [Additional Reference(s): DWR Levee Log, 1992. USACE Sacramento O&M Manual 504, May 1965, (HLM 0.39)].						
FS Date: 3/11/2014						

LM Start	0.39	Rating **	A/W	Issue No.	26 (cont)
LM End	0.39	Issue Type +	Ma	Location *	

Photo 1 of 2 : UCIP_FA_2018_32105_58608.jpg



WS view: U type concrete headwall and three CMPs with slide gates on levee slope. Grouted riprap spillway.

Photo 2 of 2 : UCIP_FA_2018_32105_58607.jpg



LS view: U type concrete headwall and three CMPs on levee slope. Soil/mud on inlet box.

* Location LS : Land Side N/A : Not Applicable WS : Water Side CR : Crown	** Rating A : Acceptable M : Minimally Acceptable U : Unacceptable	N : Not Inspected/Rated C : Corrected A/W : Acceptable but Monitor & Maintain	+ Issue Type Ma : Maintenance Deficiency Ob : Design & System Obsolescence En : Enforcement
--	--	---	---

**Flood Control Project Maintenance
Levee Inspections**

Maintenance Issue Types Only, Levee Inspection Report By Mile - Fall 2018

Butte County Department of Public Works

Waterway	Bank	Unit Miles	Inspection Start/End	Inspector
Unit No. 03 Sycamore and Sheep Hollow Creeks	Right	4.05	09/18/2018 09/18/2018	Bob Duffey

LM Start	0.39	Rating **	A/W	Issue No.	27	
LM End	0.39	Issue Type +	Ma	Location *		
Category	Supplemental			GPS Latitude/Longitude		
				Start	End	
Item	DWR UCIP LMA Responsibility			39.785230 °	39.785230 °	
				-121.876592 °	-121.876592 °	
DWR ID	19263					
Comment Code						
Inspector Comment						
FS_ID:32106						
DS_ID:19263						
EP_NO: N/A						
Repair Type: No Action Needed						
Crossing Status: Found						
UCIP Comments: Slide gate in CMP riser on waterside.The culvert was working during the field visit.						
FIELD_STRUCT_DESC: 3 of 3: 48-inch corrugated metal gravity drainage pipe through the levee, 11.7 feet below the crown. Slide gate in a riser well on the waterside (WS) slope. Concrete U-shaped headwall on each end. Flap gate on the WS end. Grouted riprap outlet channel on the WS. [Additional Reference(s): DWR Levee Log, 1992. USACE Sacramento O&M Manual 504, May 1965, (HLM 0.39)].						
FS Date: 3/11/2014						

LM Start	0.39	Rating **	A/W	Issue No.	27 (cont)
LM End	0.39	Issue Type +	Ma	Location *	

Photo 1 of 2 : UCIP_FA_2018_32106_58610.jpg



WS view: U type concrete headwall and three CMPs with slide gates on levee slope. Grouted riprap spillway.

Photo 2 of 2 : UCIP_FA_2018_32106_58609.jpg



LS view: U type concrete headwall and three CMPs on levee slope. Soil/mud on inlet box.

* Location LS : Land Side N/A : Not Applicable WS : Water Side CR : Crown	** Rating A : Acceptable M : Minimally Acceptable U : Unacceptable	N : Not Inspected/Rated C : Corrected A/W : Acceptable but Monitor & Maintain	+ Issue Type Ma : Maintenance Deficiency Ob : Design & System Obsolescence En : Enforcement
--	--	---	---

**Flood Control Project Maintenance
Levee Inspections**

Maintenance Issue Types Only, Levee Inspection Report By Mile - Fall 2018

Butte County Department of Public Works

Waterway	Bank	Unit Miles	Inspection Start/End	Inspector
Unit No. 03 Sycamore and Sheep Hollow Creeks	Right	4.05	09/18/2018 09/18/2018	Bob Duffey

LM Start	1.25	Rating **	A/W	Issue No.	28	
LM End	1.25	Issue Type +	Ma	Location *		
Category	Supplemental			GPS Latitude/Longitude		
				Start	End	
Item	DWR UCIP LMA Responsibility			39.779678 °	39.779678 °	
				-121.862632 °	-121.862632 °	
DWR ID	19264					
Comment Code						
Inspector Comment						
FS_ID:32107						
DS_ID:19264						
EP_NO: N/A						
Repair Type: No Action Needed						
Crossing Status: Found						
UCIP Comments: The culvert was working during the field visit.						
FIELD_STRUCT_DESC: 24-inch corrugated metal gravity drainage pipe						
through the levee, 11.7 feet below the crown. Flap gate on the						
waterside (WS) end. Concrete U-shaped headwall on each end.						
[Additional Reference(s): DWR Levee Log, 1992. USACE Sacramento						
O&M Manual 504, May 1965, (HLM 1.28)].						
FS Date: 3/11/2014						

Photo 1 of 3 : UCIP_FA_2018_32107_58613.jpg



WS view: U type concrete headwall and grouted riprap on levee slope.

LM Start	1.25	Rating **	A/W	Issue No.	28 (cont)
LM End	1.25	Issue Type +	Ma	Location *	

Photo 2 of 3 : UCIP_FA_2018_32107_58612.jpg



WS view: U type concrete headwall, flapgate, and CMP on levee slope.

* Location LS : Land Side N/A : Not Applicable WS : Water Side CR : Crown	** Rating A : Acceptable M : Minimally Acceptable U : Unacceptable	N : Not Inspected/Rated C : Corrected A/W : Acceptable but Monitor & Maintain	+ Issue Type Ma : Maintenance Deficiency Ob : Design & System Obsolescence En : Enforcement
--	--	---	---

**Flood Control Project Maintenance
Levee Inspections**

Maintenance Issue Types Only, Levee Inspection Report By Mile - Fall 2018

Butte County Department of Public Works

Waterway	Bank	Unit Miles	Inspection Start/End	Inspector
Unit No. 03 Sycamore and Sheep Hollow Creeks	Right	4.05	09/18/2018 09/18/2018	Bob Duffey

LM Start	1.25	Rating **	A/W	Issue No.	28 (cont)	
LM End	1.25	Issue Type +	Ma	Location *		
Category	Supplemental			GPS Latitude/Longitude		
				Start	End	
Item	DWR UCIP LMA Responsibility			39.779678 °	39.779678 °	
				-121.862632 °	-121.862632 °	
DWR ID	19264					
Comment Code						
Inspector Comment						
FS_ID:32107						
DS_ID:19264						
EP_NO: N/A						
Repair Type: No Action Needed						
Crossing Status: Found						
UCIP Comments: The culvert was working during the field visit.						
FIELD_STRUCT_DESC: 24-inch corrugated metal gravity drainage pipe						
through the levee, 11.7 feet below the crown. Flap gate on the						
waterside (WS) end. Concrete U-shaped headwall on each end.						
[Additional Reference(s): DWR Levee Log, 1992. USACE Sacramento						
O&M Manual 504, May 1965, (HLM 1.28)].						
FS Date: 3/11/2014						

Photo 3 of 3 : UCIP_FA_2018_32107_58611.jpg



LS view: U type concrete headwall and CMP on levee slope.

LM Start	1.33	Rating **	A	Issue No.	22
LM End	1.33	Issue Type +	Ma	Location *	LS
Category	Earthen Levee			GPS Latitude/Longitude	
				Start	End
Item	Vegetation			39.779420°	39.779420°
				-121.861140°	-121.861140°
DWR ID	DWR_NA0003_03_f_2018_22				
Comment Code					
V1 : Control annual grass and weeds on the levee slopes and easements.					
Inspector Comment					
The vegetation was removed from both slopes.					

Photo 1 of 1 : FA_2018_NA0003_67_22_20181001_00039.jpg



View of no vegetation on both slopes.

* Location LS : Land Side N/A : Not Applicable WS : Water Side CR : Crown	** Rating A : Acceptable M : Minimally Acceptable U : Unacceptable	N : Not Inspected/Rated C : Corrected A/W : Acceptable but Monitor & Maintain	+ Issue Type Ma : Maintenance Deficiency Ob : Design & System Obsolescence En : Enforcement
--	--	---	---

**Flood Control Project Maintenance
Levee Inspections**

Maintenance Issue Types Only, Levee Inspection Report By Mile - Fall 2018

Butte County Department of Public Works

Waterway	Bank	Unit Miles	Inspection Start/End	Inspector
Unit No. 03 Sycamore and Sheep Hollow Creeks	Right	4.05	09/18/2018 09/18/2018	Bob Duffey

LM Start	1.50	Rating **	A/W	Issue No.	29
LM End	1.50	Issue Type +	Ma	Location *	
Category	Supplemental		GPS Latitude/Longitude		
			Start	End	
Item	DWR UCIP LMA Responsibility		39.779230°	39.779230°	
			-121.857945°	-121.857945°	
DWR ID	19265				

Comment Code

Inspector Comment

FS_ID:31899
DS_ID:19265
EP_NO: N/A
Repair Type: No Action Needed
Crossing Status: Found
UCIP Comments: Working during the field visit.
FIELD_STRUCT_DESC: 24-inch corrugated metal gravity drainage pipe through the levee, 11 feet below the crown. Flap gate on the waterside (WS) end. Concrete U-shaped headwall on each end. Grouted riprap apron on each end. [Additional Reference(s): DWR Levee Log, 1992. USACE Sacramento O&M Manual 504, May 1965, (HLM 1.53)].
FS Date: 3/11/2014

LM Start	1.50	Rating **	A/W	Issue No.	29 (cont)
LM End	1.50	Issue Type +	Ma	Location *	

Photo 1 of 2 : UCIP_FA_2018_31899_58187.jpg



WS view: U type concrete headwall, flapgate, and CMP on levee slope. Looks clean and clear.

Photo 2 of 2 : UCIP_FA_2018_31899_58186.jpg



LS view: U type concrete headwall and CMP on levee slope. Looks clean and clear.

* Location LS : Land Side N/A : Not Applicable WS : Water Side CR : Crown	** Rating A : Acceptable M : Minimally Acceptable U : Unacceptable	N : Not Inspected/Rated C : Corrected A/W : Acceptable but Monitor & Maintain	+ Issue Type Ma : Maintenance Deficiency Ob : Design & System Obsolescence En : Enforcement
--	--	---	---

**Flood Control Project Maintenance
Levee Inspections**

Maintenance Issue Types Only, Levee Inspection Report By Mile - Fall 2018

Butte County Department of Public Works

Waterway	Bank	Unit Miles	Inspection Start/End	Inspector
Unit No. 03 Sycamore and Sheep Hollow Creeks	Right	4.05	09/18/2018 09/18/2018	Bob Duffey

LM Start	2.17	Rating **	M	Issue No.	31	
LM End	2.17	Issue Type +	Ma	Location *		
Category	Supplemental			GPS Latitude/Longitude		
				Start	End	
Item	DWR UCIP LMA Responsibility			39.785290 °	39.785290 °	
				-121.844235 °	-121.844235 °	
DWR ID	19267					
Comment Code						
Inspector Comment						
FS_ID:32124 DS_ID:19267 EP_NO: N/A Repair Type: Non-Urgent Crossing Status: Found UCIP Comments: Pipe is about 4 feet below the crown. Needs cleaning and clearing the culvert. FIELD_STRUCT_DESC: 24-inch corrugated metal gravity drainage pipe through the levee, 6 feet below the crown. Flap gate on the waterside (WS) end. Concrete U-shaped headwall on each end. [Additional Reference(s): DWR Levee Log, 1992. USACE Sacramento O&M Manual 504, May 1965, (HLM 2.23)]. FS Date: 3/7/2014						

Photo 1 of 3 : UCIP_FA_2018_32124_58625.jpg



WS view: concrete headwall, pipe, and flapgate on levee slope. Vegetation and mud on outlet box.

LM Start	2.17	Rating **	M	Issue No.	31 (cont)
LM End	2.17	Issue Type +	Ma	Location *	

Photo 2 of 3 : UCIP_FA_2018_32124_58624.jpg



LS view: U type concrete headwall of CMP culvert on levee slope. Vegetation on inlet box.

* Location LS : Land Side N/A : Not Applicable WS : Water Side CR : Crown	** Rating A : Acceptable M : Minimally Acceptable U : Unacceptable	N : Not Inspected/Rated C : Corrected A/W : Acceptable but Monitor & Maintain	+ Issue Type Ma : Maintenance Deficiency Ob : Design & System Obsolescence En : Enforcement
--	--	---	---

**Flood Control Project Maintenance
Levee Inspections**

Maintenance Issue Types Only, Levee Inspection Report By Mile - Fall 2018

Butte County Department of Public Works

Waterway	Bank	Unit Miles	Inspection Start/End	Inspector
Unit No. 03 Sycamore and Sheep Hollow Creeks	Right	4.05	09/18/2018 09/18/2018	Bob Duffey

LM Start	2.17	Rating **	M	Issue No.	31 (cont)	
LM End	2.17	Issue Type +	Ma	Location *		
Category	Supplemental			GPS Latitude/Longitude		
				Start		End
Item	DWR UCIP LMA Responsibility			39.785290 °		39.785290 °
				-121.844235 °		-121.844235 °
DWR ID	19267					
Comment Code						
Inspector Comment						
FS_ID:32124 DS_ID:19267 EP_NO: N/A Repair Type: Non-Urgent Crossing Status: Found UCIP Comments: Pipe is about 4 feet below the crown. Needs cleaning and clearing the culvert. FIELD_STRUCT_DESC: 24-inch corrugated metal gravity drainage pipe through the levee, 6 feet below the crown. Flap gate on the waterside (WS) end. Concrete U-shaped headwall on each end. [Additional Reference(s): DWR Levee Log, 1992. USACE Sacramento O&M Manual 504, May 1965, (HLM 2.23)]. FS Date: 3/7/2014						

Photo 3 of 3 : UCIP_FA_2018_32124_58627.jpg



LS view: inside view of CMP on levee slope. Needs cleaning and clearing.

LM Start	2.68	Rating **	M	Issue No.	23
LM End	2.72	Issue Type +	Ma	Location *	WS
Category	Supplemental			GPS Latitude/Longitude	
				Start	End
Item	2017 USACE Erosion Survey, DRAFT			39.781508 °	39.781327 °
				-121.850137 °	-121.850828 °
DWR ID	DWR_ST0010_02_f_2022_13				
Comment Code					
Inspector Comment					
2017 Site ID: CHI 2.7 L					
Status: Eroding New					
2017 Field Notes: No trees on bank or levee. Large erosion scarp along lower bank.					
Site History:					

No Photos

* Location LS : Land Side N/A : Not Applicable WS : Water Side CR : Crown	** Rating A : Acceptable M : Minimally Acceptable U : Unacceptable	N : Not Inspected/Rated C : Corrected A/W : Acceptable but Monitor & Maintain	+ Issue Type Ma : Maintenance Deficiency Ob : Design & System Obsolescence En : Enforcement
--	--	---	---

**Flood Control Project Maintenance
Levee Inspections**

Maintenance Issue Types Only, Levee Inspection Report By Mile - Fall 2018

Butte County Department of Public Works

Waterway	Bank	Unit Miles	Inspection Start/End	Inspector
Unit No. 03 Sycamore and Sheep Hollow Creeks	Right	4.05	09/18/2018 09/18/2018	Bob Duffey

LM Start	3.08	Rating **	M	Issue No.	33
LM End	3.08	Issue Type +	Ma	Location *	
Category	Supplemental			GPS Latitude/Longitude	
				Start	End
Item	DWR UCIP LMA Responsibility			39.778016 °	39.778016 °
				-121.854460 °	-121.854460 °
DWR ID	19269				
Comment Code					
Inspector Comment					
FS_ID:31901 DS_ID:19269 EP_NO: N/A Repair Type: Non-Urgent Crossing Status: Found UCIP Comments: Needs cleaning and clearing the culvert. FIELD_STRUCT_DESC: 24-inch corrugated metal gravity drainage pipe through the levee, 11 feet below the crown. Flap gate on the waterside (WS) end. Concrete U-shaped headwall on each end. Grouted riprap apron on the landside (LS) end. Grouted riprap spillway on the WS end. [Additional Reference(s): DWR Levee Log, 1992. USACE Sacramento O&M Manual 504, May 1965, (HLM 3.16)]. FS Date: 3/7/2014					

Photo 1 of 3 : UCIP_FA_2018_31901_58194.jpg



WS view: U type concrete headwall, flapgate, and CMP on levee slope.
Needs cleaning and clearing.

LM Start	3.08	Rating **	M	Issue No.	33 (cont)
LM End	3.08	Issue Type +	Ma	Location *	

Photo 2 of 3 : UCIP_FA_2018_31901_58193.jpg



LS view: U type concrete headwall and CMP on levee slope. Soil/mud on inlet box.

* Location LS : Land Side N/A : Not Applicable WS : Water Side CR : Crown	** Rating A : Acceptable M : Minimally Acceptable U : Unacceptable	N : Not Inspected/Rated C : Corrected A/W : Acceptable but Monitor & Maintain	+ Issue Type Ma : Maintenance Deficiency Ob : Design & System Obsolescence En : Enforcement
--	--	---	---

**Flood Control Project Maintenance
Levee Inspections**

Maintenance Issue Types Only, Levee Inspection Report By Mile - Fall 2018

Butte County Department of Public Works

Waterway	Bank	Unit Miles	Inspection Start/End	Inspector
Unit No. 03 Sycamore and Sheep Hollow Creeks	Right	4.05	09/18/2018 09/18/2018	Bob Duffey

LM Start	3.08	Rating **	M	Issue No.	33 (cont)
LM End	3.08	Issue Type +	Ma	Location *	
Category	Supplemental			GPS Latitude/Longitude	
				Start	End
Item	DWR UCIP LMA Responsibility			39.778016 °	39.778016 °
				-121.854460 °	-121.854460 °
DWR ID	19269				
Comment Code					
Inspector Comment					
FS_ID:31901 DS_ID:19269 EP_NO: N/A Repair Type: Non-Urgent Crossing Status: Found UCIP Comments: Needs cleaning and clearing the culvert. FIELD_STRUCT_DESC: 24-inch corrugated metal gravity drainage pipe through the levee, 11 feet below the crown. Flap gate on the waterside (WS) end. Concrete U-shaped headwall on each end. Grouted riprap apron on the landside (LS) end. Grouted riprap spillway on the WS end. [Additional Reference(s): DWR Levee Log, 1992. USACE Sacramento O&M Manual 504, May 1965, (HLM 3.16)]. FS Date: 3/7/2014					

Photo 3 of 3 : UCIP_FA_2018_31901_58195.jpg



LS view: inside view of CMP on levee slope. Needs cleaning and clearing.

LM Start	3.19	Rating **	A/W	Issue No.	34
LM End	3.19	Issue Type +	Ma	Location *	
Category	Supplemental			GPS Latitude/Longitude	
				Start	End
Item	DWR UCIP LMA Responsibility			39.777463 °	39.777463 °
				-121.852512 °	-121.852512 °
DWR ID	19270				
Comment Code					
Inspector Comment					
FS_ID:31902					
DS_ID:19270					
EP_NO: N/A					
Repair Type: No Action Needed					
Crossing Status: Found					
UCIP Comments:					
FIELD_STRUCT_DESC: 24-inch corrugated metal gravity drainage pipe through the levee, 11 feet below the crown. Flap gate on the waterside (WS) end. Concrete U-shaped headwall on each end. Grouted riprap apron on the landside (LS) end. Grouted riprap spillway on the WS end. [Additional Reference(s): DWR Levee Log, 1992. USACE Sacramento O&M Manual 504, May 1965, (HLM 3.28)].					
FS Date: 3/7/2014					

Photo 1 of 3 : UCIP_FA_2018_31902_58201.jpg



WS view: U type concrete headwall and grouted riprap spillway on levee slope.

* Location LS : Land Side N/A : Not Applicable WS : Water Side CR : Crown	** Rating A : Acceptable M : Minimally Acceptable U : Unacceptable	N : Not Inspected/Rated C : Corrected A/W : Acceptable but Monitor & Maintain	+ Issue Type Ma : Maintenance Deficiency Ob : Design & System Obsolescence En : Enforcement
--	--	---	---

**Flood Control Project Maintenance
Levee Inspections**

Maintenance Issue Types Only, Levee Inspection Report By Mile - Fall 2018

Butte County Department of Public Works

Waterway	Bank	Unit Miles	Inspection Start/End	Inspector
Unit No. 03 Sycamore and Sheep Hollow Creeks	Right	4.05	09/18/2018 09/18/2018	Bob Duffey

LM Start	3.19	Rating **	A/W	Issue No.	34 (cont)	
LM End	3.19	Issue Type +	Ma	Location *		
Category	Supplemental			GPS Latitude/Longitude		
				Start		End
Item	DWR UCIP LMA Responsibility			39.777463 °		39.777463 °
				-121.852512 °		-121.852512 °
DWR ID	19270					
Comment Code						
Inspector Comment						
FS_ID:31902 DS_ID:19270 EP_NO: N/A Repair Type: No Action Needed Crossing Status: Found UCIP Comments: FIELD_STRUCT_DESC: 24-inch corrugated metal gravity drainage pipe through the levee, 11 feet below the crown. Flap gate on the waterside (WS) end. Concrete U-shaped headwall on each end. Grouted riprap apron on the landside (LS) end. Grouted riprap spillway on the WS end. [Additional Reference(s): DWR Levee Log, 1992. USACE Sacramento O&M Manual 504, May 1965, (HLM 3.28)]. FS Date: 3/7/2014						

LM Start	3.19	Rating **	A/W	Issue No.	34 (cont)
LM End	3.19	Issue Type +	Ma	Location *	

Photo 2 of 3 : UCIP_FA_2018_31902_58200.jpg



WS view: U type concrete headwall and CMP on levee slope.

Photo 3 of 3 : UCIP_FA_2018_31902_58199.jpg



LS view: U type concrete headwall and CMP on levee slope. Soil/mud on inlet box.

* Location LS : Land Side N/A : Not Applicable WS : Water Side CR : Crown	** Rating A : Acceptable M : Minimally Acceptable U : Unacceptable	N : Not Inspected/Rated C : Corrected A/W : Acceptable but Monitor & Maintain	+ Issue Type Ma : Maintenance Deficiency Ob : Design & System Obsolescence En : Enforcement
--	--	---	---

**Flood Control Project Maintenance
Levee Inspections**

Maintenance Issue Types Only, Levee Inspection Report By Mile - Fall 2018

Butte County Department of Public Works

Waterway	Bank	Unit Miles	Inspection Start/End	Inspector
Unit No. 03 Sycamore and Sheep Hollow Creeks	Right	4.05	09/18/2018 09/18/2018	Bob Duffey

LM Start	3.34	Rating **	M	Issue No.	35	
LM End	3.34	Issue Type +	Ma	Location *		
Category	Supplemental			GPS Latitude/Longitude		
				Start		End
Item	DWR UCIP LMA Responsibility			39.777410 °		39.777410 °
				-121.849627 °		-121.849627 °
DWR ID	19271					
Comment Code						
Inspector Comment						
FS_ID:31864 DS_ID:19271 EP_NO: N/A Repair Type: Non-Urgent Crossing Status: Found UCIP Comments: Needs cleaning and clearing the culvert. FIELD_STRUCT_DESC: 24-inch corrugated metal gravity drainage pipe through the levee, 10.5 feet below the crown. Flap gate on the waterside (WS) end. Concrete U-shaped headwall on each end. Grouted riprap apron on the landside (LS) end. Grouted riprap spillway on the WS end. [Additional Reference(s): DWR Levee Log, 1992. USACE Sacramento O&M Manual 504, May 1965, (HLM 3.43)]. FS Date: 3/7/2014						

LM Start	3.34	Rating **	M	Issue No.	35 (cont)
LM End	3.34	Issue Type +	Ma	Location *	

Photo 1 of 3 : UCIP_FA_2018_31864_58069.jpg



WS view: U type concrete headwall, pipe, and flapgate on levee slope. Soil/mud on outlet box. Vegetation debris blocking outlet box.

Photo 2 of 3 : UCIP_FA_2018_31864_58068.jpg



LS view: U type concrete headwall and CMP on levee slope. Soil/mud on inlet box.

* Location LS : Land Side N/A : Not Applicable WS : Water Side CR : Crown	** Rating A : Acceptable M : Minimally Acceptable U : Unacceptable	N : Not Inspected/Rated C : Corrected A/W : Acceptable but Monitor & Maintain	+ Issue Type Ma : Maintenance Deficiency Ob : Design & System Obsolescence En : Enforcement
--	--	---	---

**Flood Control Project Maintenance
Levee Inspections**

Maintenance Issue Types Only, Levee Inspection Report By Mile - Fall 2018

Butte County Department of Public Works

Waterway	Bank	Unit Miles	Inspection Start/End	Inspector
Unit No. 03 Sycamore and Sheep Hollow Creeks	Right	4.05	09/18/2018 09/18/2018	Bob Duffey

LM Start	3.34	Rating **	M	Issue No.	35 (cont)	
LM End	3.34	Issue Type +	Ma	Location *		
Category	Supplemental			GPS Latitude/Longitude		
				Start	End	
Item	DWR UCIP LMA Responsibility			39.777410 °	39.777410 °	
				-121.849627 °	-121.849627 °	
DWR ID	19271					
Comment Code						
Inspector Comment						
FS_ID:31864 DS_ID:19271 EP_NO: N/A Repair Type: Non-Urgent Crossing Status: Found UCIP Comments: Needs cleaning and clearing the culvert. FIELD_STRUCT_DESC: 24-inch corrugated metal gravity drainage pipe through the levee, 10.5 feet below the crown. Flap gate on the waterside (WS) end. Concrete U-shaped headwall on each end. Grouted riprap apron on the landside (LS) end. Grouted riprap spillway on the WS end. [Additional Reference(s): DWR Levee Log, 1992. USACE Sacramento O&M Manual 504, May 1965, (HLM 3.43)]. FS Date: 3/7/2014						

Photo 3 of 3 : UCIP_FA_2018_31864_58067.jpg



LS view: inside view of CMP on levee slope. Needs cleaning and clearing.

LM Start	3.38	Rating **	M	Issue No.	14
LM End	3.38	Issue Type +	Ma	Location *	LS
Category	Earthen Levee			GPS Latitude/Longitude	
				Start	End
Item	Vegetation			39.777429 °	39.777429 °
				-121.848937 °	-121.848937 °
DWR ID	DWR_NA0003_03_f_2016_14				
Comment Code					
V2 : Remove the wild growth other than native grasses from the levee slopes.					
Inspector Comment					

Photo 1 of 1 : FA_2018_NA0003_67_14_20180905_00003.jpg



View of a bush along the landside toe.

* Location LS : Land Side N/A : Not Applicable WS : Water Side CR : Crown	** Rating A : Acceptable M : Minimally Acceptable U : Unacceptable	N : Not Inspected/Rated C : Corrected A/W : Acceptable but Monitor & Maintain	+ Issue Type Ma : Maintenance Deficiency Ob : Design & System Obsolescence En : Enforcement
--	--	---	---

**Flood Control Project Maintenance
Levee Inspections**

Maintenance Issue Types Only, Levee Inspection Report By Mile - Fall 2018

Butte County Department of Public Works

Waterway	Bank	Unit Miles	Inspection Start/End	Inspector
Unit No. 03 Sycamore and Sheep Hollow Creeks	Right	4.05	09/18/2018 09/18/2018	Bob Duffey

LM Start	3.50	Rating **	M	Issue No.	36
LM End	3.50	Issue Type +	Ma	Location *	
Category	Supplemental			GPS Latitude/Longitude	
				Start	End
Item	DWR UCIP LMA Responsibility			39.777139°	39.777139°
				-121.846769°	-121.846769°
DWR ID	19272				
Comment Code					
Inspector Comment					
FS_ID:31856 DS_ID:19272 EP_NO: N/A Repair Type: Non-Urgent Crossing Status: Found UCIP Comments: Needs cleaning and clearing the culvert. FIELD_STRUCT_DESC: 24-inch corrugated metal gravity drainage pipe through the levee, 9.5 feet below the crown. Flap gate on the waterside (WS) end. Concrete U-shaped headwall on each end. Grouted riprap apron on the landside (LS) end. Grouted riprap spillway on the WS end. [Additional Reference(s): DWR Levee Log, 1992. USACE Sacramento O&M Manual 504, May 1965, (HLM 3.59)]. FS Date: 3/7/2014					

LM Start	3.50	Rating **	M	Issue No.	36 (cont)
LM End	3.50	Issue Type +	Ma	Location *	

Photo 1 of 3 : UCIP_FA_2018_31856_58053.jpg



WS view: U type concrete headwall, pipe, and flapgate on levee slope.
Soil/mud on outlet box.

Photo 2 of 3 : UCIP_FA_2018_31856_58052.jpg



LS view: U type concrete headwall and CMP on levee slope. Soil/mud on inlet box.

* Location LS : Land Side N/A : Not Applicable WS : Water Side CR : Crown	** Rating A : Acceptable M : Minimally Acceptable U : Unacceptable	N : Not Inspected/Rated C : Corrected A/W : Acceptable but Monitor & Maintain	+ Issue Type Ma : Maintenance Deficiency Ob : Design & System Obsolescence En : Enforcement
--	--	---	---

**Flood Control Project Maintenance
Levee Inspections**

Maintenance Issue Types Only, Levee Inspection Report By Mile - Fall 2018

Butte County Department of Public Works

Waterway	Bank	Unit Miles	Inspection Start/End	Inspector
Unit No. 03 Sycamore and Sheep Hollow Creeks	Right	4.05	09/18/2018 09/18/2018	Bob Duffey

LM Start	3.50	Rating **	M	Issue No.	36 (cont)	
LM End	3.50	Issue Type +	Ma	Location *		
Category	Supplemental			GPS Latitude/Longitude		
				Start	End	
Item	DWR UCIP LMA Responsibility			39.777139 °	39.777139 °	
				-121.846769 °	-121.846769 °	
DWR ID	19272					
Comment Code						
Inspector Comment						
FS_ID:31856 DS_ID:19272 EP_NO: N/A Repair Type: Non-Urgent Crossing Status: Found UCIP Comments: Needs cleaning and clearing the culvert. FIELD_STRUCT_DESC: 24-inch corrugated metal gravity drainage pipe through the levee, 9.5 feet below the crown. Flap gate on the waterside (WS) end. Concrete U-shaped headwall on each end. Grouted riprap apron on the landside (LS) end. Grouted riprap spillway on the WS end. [Additional Reference(s): DWR Levee Log, 1992. USACE Sacramento O&M Manual 504, May 1965, (HLM 3.59)]. FS Date: 3/7/2014						

Photo 3 of 3 : UCIP_FA_2018_31856_58051.jpg



LS view: inside view of CMP on levee slope. Needs cleaning and clearing.

LM Start	3.68	Rating **	M	Issue No.	38
LM End	3.68	Issue Type +	Ma	Location *	
Category	Supplemental			GPS Latitude/Longitude	
				Start	End
Item	DWR UCIP LMA Responsibility			39.777662 °	39.777662 °
				-121.843489 °	-121.843489 °
DWR ID	19275				
Comment Code					
Inspector Comment					
FS_ID:32125 DS_ID:19275 EP_NO: N/A Repair Type: Non-Urgent Crossing Status: Found UCIP Comments: The culvert was working during the field visit.Needs cleaning and clearing on both ends of the pipe. FIELD_STRUCT_DESC: 24-inch corrugated metal gravity drainage pipe through the levee, 7.5 feet below the crown. Flap gate on the waterside (WS) end. Concrete U-shaped headwall on each end. Grouted riprap apron on the landside (LS) end. Grouted riprap spillway on the WS end. [Additional Reference(s): DWR Levee Log, 1992. USACE Sacramento O&M Manual 504, May 1965, (HLM 3.76)]. FS Date: 3/4/2014					

Photo 1 of 2 : UCIP_FA_2018_32125_58629.jpg



WS view: U type concrete headwall, pipe, and flapgate on levee slope. Soil/mud on outlet box. Vegetation debris blocking outlet box.

* Location LS : Land Side N/A : Not Applicable WS : Water Side CR : Crown	** Rating A : Acceptable M : Minimally Acceptable U : Unacceptable	N : Not Inspected/Rated C : Corrected A/W : Acceptable but Monitor & Maintain	+ Issue Type Ma : Maintenance Deficiency Ob : Design & System Obsolescence En : Enforcement
--	--	---	---

**Flood Control Project Maintenance
Levee Inspections**

Maintenance Issue Types Only, Levee Inspection Report By Mile - Fall 2018

Butte County Department of Public Works

Waterway	Bank	Unit Miles	Inspection Start/End	Inspector
Unit No. 03 Sycamore and Sheep Hollow Creeks	Right	4.05	09/18/2018 09/18/2018	Bob Duffey

LM Start	3.68	Rating **	M	Issue No.	38 (cont)	
LM End	3.68	Issue Type +	Ma	Location *		
Category	Supplemental			GPS Latitude/Longitude		
				Start		End
Item	DWR UCIP LMA Responsibility			39.777662 °		39.777662 °
				-121.843489 °		-121.843489 °
DWR ID	19275					
Comment Code						
Inspector Comment						
FS_ID:32125 DS_ID:19275 EP_NO: N/A Repair Type: Non-Urgent Crossing Status: Found UCIP Comments: The culvert was working during the field visit.Needs cleaning and clearing on both ends of the pipe. FIELD_STRUCT_DESC: 24-inch corrugated metal gravity drainage pipe through the levee, 7.5 feet below the crown. Flap gate on the waterside (WS) end. Concrete U-shaped headwall on each end. Grouted riprap apron on the landside (LS) end. Grouted riprap spillway on the WS end. [Additional Reference(s): DWR Levee Log, 1992. USACE Sacramento O&M Manual 504, May 1965, (HLM 3.76)]. FS Date: 3/4/2014						

Photo 2 of 2 : UCIP_FA_2018_32125_58628.jpg



LS view: U type concrete headwall and pipe on levee slope. Soil/mud on inlet box. Vegetation debris blocking inlet box.

* Location LS : Land Side N/A : Not Applicable WS : Water Side CR : Crown	** Rating A : Acceptable M : Minimally Acceptable U : Unacceptable N : Not Inspected/Rated C : Corrected A/W : Acceptable but Monitor & Maintain	+ Issue Type Ma : Maintenance Deficiency Ob : Design & System Obsolescence En : Enforcement
--	---	---

**Flood Control Project Maintenance
Levee Inspections**

Maintenance Issue Types Only, Levee Inspection Report By Mile - Fall 2018

Butte County Department of Public Works

Waterway	Bank	Unit Miles	Inspection Start/End	Inspector
Unit No. 04 Sycamore and Dry Creeks	Right	2.86	09/18/2018 09/18/2018	Bob Duffey

LM Start	0.16	Rating **	M	Issue No.	20
LM End	0.16	Issue Type +	Ma	Location *	LS
Category	Earthen Levee			GPS Latitude/Longitude	
				Start	End
Item	Vegetation			39.776526 °	39.776526 °
				-121.848727 °	-121.848727 °
DWR ID	DWR_NA0003_04_f_2016_20				
Comment Code					
V2 : Remove the wild growth other than native grasses from the levee slopes.					
Inspector Comment					

Photo 1 of 1 : FA_2018_NA0003_68_20_20180905_00006.jpg



View of the vegetation along the landside toe blocking visibility.

LM Start	0.27	Rating **	M	Issue No.	25
LM End	0.27	Issue Type +	Ma	Location *	
Category	Supplemental			GPS Latitude/Longitude	
				Start	End
Item	DWR UCIP LMA Responsibility			39.776554 °	39.776554 °
				-121.850730 °	-121.850730 °
DWR ID	19279				
Comment Code					
Inspector Comment					
FS_ID:32026					
DS_ID:19279					
EP_NO: N/A					
Repair Type: Non-Urgent					
Crossing Status: Found					
UCIP Comments: Needs cleaning and clearing the culvert.					
FIELD_STRUCT_DESC: 24-inch corrugated metal gravity drainage pipe through the levee, 10 feet below the crown. Flap gate on the waterside (WS) end. Concrete U-shaped headwall on each end. Grouted riprap apron on the landside (LS) end. Grouted riprap spillway on the WS end. [Additional Reference(s): DWR Levee Log, 1992. USACE Sacramento O&M Manual 504, May 1965, (HLM 0.28)].					
FS Date: 3/7/2014					

Photo 1 of 3 : UCIP_FA_2018_32026_58520.jpg



WS view: concrete headwall and grouted riprap spillway on levee slope.

* Location LS : Land Side N/A : Not Applicable WS : Water Side CR : Crown	** Rating A : Acceptable M : Minimally Acceptable U : Unacceptable	N : Not Inspected/Rated C : Corrected A/W : Acceptable but Monitor & Maintain	+ Issue Type Ma : Maintenance Deficiency Ob : Design & System Obsolescence En : Enforcement
--	--	---	---

**Flood Control Project Maintenance
Levee Inspections**

Maintenance Issue Types Only, Levee Inspection Report By Mile - Fall 2018

Butte County Department of Public Works

Waterway	Bank	Unit Miles	Inspection Start/End	Inspector
Unit No. 04 Sycamore and Dry Creeks	Right	2.86	09/18/2018 09/18/2018	Bob Duffey

LM Start	0.27	Rating **	M	Issue No.	25 (cont)
LM End	0.27	Issue Type +	Ma	Location *	
Category	Supplemental			GPS Latitude/Longitude	
				Start	End
Item	DWR UCIP LMA Responsibility			39.776554 °	39.776554 °
				-121.850730 °	-121.850730 °
DWR ID	19279				
Comment Code					
Inspector Comment					
FS_ID:32026 DS_ID:19279 EP_NO: N/A Repair Type: Non-Urgent Crossing Status: Found UCIP Comments: Needs cleaning and clearing the culvert. FIELD_STRUCT_DESC: 24-inch corrugated metal gravity drainage pipe through the levee, 10 feet below the crown. Flap gate on the waterside (WS) end. Concrete U-shaped headwall on each end. Grouted riprap apron on the landside (LS) end. Grouted riprap spillway on the WS end. [Additional Reference(s): DWR Levee Log, 1992. USACE Sacramento O&M Manual 504, May 1965, (HLM 0.28)]. FS Date: 3/7/2014					

LM Start	0.27	Rating **	M	Issue No.	25 (cont)
LM End	0.27	Issue Type +	Ma	Location *	

Photo 2 of 3 : UCIP_FA_2018_32026_58519.jpg



WS view: U type concrete headwall and CMP on levee slope. Mud and vegetation debris on outlet box.

Photo 3 of 3 : UCIP_FA_2018_32026_58518.jpg



LS view: U type concrete headwall and CMP on levee slope. Mud and pebbles on inlet box.

* Location LS : Land Side N/A : Not Applicable WS : Water Side CR : Crown	** Rating A : Acceptable M : Minimally Acceptable U : Unacceptable	N : Not Inspected/Rated C : Corrected A/W : Acceptable but Monitor & Maintain	+ Issue Type Ma : Maintenance Deficiency Ob : Design & System Obsolescence En : Enforcement
--	--	---	---

**Flood Control Project Maintenance
Levee Inspections**

Maintenance Issue Types Only, Levee Inspection Report By Mile - Fall 2018

Butte County Department of Public Works

Waterway	Bank	Unit Miles	Inspection Start/End	Inspector
Unit No. 04 Sycamore and Dry Creeks	Right	2.86	09/18/2018 09/18/2018	Bob Duffey

LM Start	0.33	Rating **	M	Issue No.	26	
LM End	0.33	Issue Type +	Ma	Location *		
Category	Supplemental			GPS Latitude/Longitude		
				Start		End
Item	DWR UCIP LMA Responsibility			39.775926 °		39.775926 °
				-121.850647 °		-121.850647 °
DWR ID	19280					
Comment Code						
Inspector Comment						
FS_ID:32025						
DS_ID:19280						
EP_NO: N/A						
Repair Type: Non-Urgent						
Crossing Status: Found						
UCIP Comments: Slide gate in a CMP riser. Vegetation debris and mud on inlet box.Needs cleaning and clearing the culvert.						
FIELD_STRUCT_DESC: 24-inch corrugated metal gravity drainage pipe through the levee and under the channel, 9.5 feet below the crown.						
Slide gate in a corrugated metal pipe (CMP) riser on the waterside (WS) slope. Concrete U-shaped headwall on the landside (LS) end.						
[Additional Reference(s): DWR Levee Log, 1992. USACE Sacramento O&M Manual 504, May 1965, (HLM 0.34)].						
FS Date: 3/7/2014						

LM Start	0.33	Rating **	M	Issue No.	26 (cont)
LM End	0.33	Issue Type +	Ma	Location *	

Photo 1 of 3 : UCIP_FA_2018_32025_58512.jpg



WS view: slide gate in CMP riser on waterside shoulder.

Photo 2 of 3 : UCIP_FA_2018_32025_58511.jpg



WS view: inside view of slide gate in CMP riser on waterside shoulder.
Debris trapped in the riser.

* Location LS : Land Side N/A : Not Applicable WS : Water Side CR : Crown	** Rating A : Acceptable M : Minimally Acceptable U : Unacceptable	N : Not Inspected/Rated C : Corrected A/W : Acceptable but Monitor & Maintain	+ Issue Type Ma : Maintenance Deficiency Ob : Design & System Obsolescence En : Enforcement
--	--	---	---

**Flood Control Project Maintenance
Levee Inspections**

Maintenance Issue Types Only, Levee Inspection Report By Mile - Fall 2018

Butte County Department of Public Works

Waterway	Bank	Unit Miles	Inspection Start/End	Inspector
Unit No. 04 Sycamore and Dry Creeks	Right	2.86	09/18/2018 09/18/2018	Bob Duffey

LM Start	0.33	Rating **	M	Issue No.	26 (cont)	
LM End	0.33	Issue Type +	Ma	Location *		
Category	Supplemental			GPS Latitude/Longitude		
				Start	End	
Item	DWR UCIP LMA Responsibility			39.775926 °	39.775926 °	
				-121.850647 °	-121.850647 °	
DWR ID	19280					
Comment Code						
Inspector Comment						
FS_ID:32025 DS_ID:19280 EP_NO: N/A Repair Type: Non-Urgent Crossing Status: Found UCIP Comments: Slide gate in a CMP riser. Vegetation debris and mud on inlet box.Needs cleaning and clearing the culvert. FIELD_STRUCT_DESC: 24-inch corrugated metal gravity drainage pipe through the levee and under the channel, 9.5 feet below the crown. Slide gate in a corrugated metal pipe (CMP) riser on the waterside (WS) slope. Concrete U-shaped headwall on the landside (LS) end. [Additional Reference(s): DWR Levee Log, 1992. USACE Sacramento O&M Manual 504, May 1965, (HLM 0.34)]. FS Date: 3/7/2014						

Photo 3 of 3 : UCIP_FA_2018_32025_58510.jpg



LS view: U type concrete headwall and CMP on levee slope. Vegetation debris and mud on inlet box.

LM Start	0.35	Rating **	M	Issue No.	27
LM End	0.35	Issue Type +	Ma	Location *	
Category	Supplemental			GPS Latitude/Longitude	
				Start	End
Item	DWR UCIP LMA Responsibility			39.775682 °	39.775682 °
				-121.850375 °	-121.850375 °
DWR ID	19281				
Comment Code					
Inspector Comment					
FS_ID:32023 DS_ID:19281 EP_NO: N/A Repair Type: Non-Urgent Crossing Status: Found UCIP Comments: Needs cleaning and clearing the culvert. FIELD_STRUCT_DESC: 24-inch corrugated metal gravity drainage pipe through the levee, 8 feet below the crown. Flap gate on the waterside (WS) end. Concrete U-shaped headwall on each end. Grouted riprap apron on the landside (LS) end. Grouted riprap spillway on the WS end. [Additional Reference(s): DWR Levee Log, 1992. USACE Sacramento O&M Manual 504, May 1965, (HLM 0.36)]. FS Date: 3/7/2014					

Photo 1 of 3 : UCIP_FA_2018_32023_58505.jpg



WS view: U type concrete headwall and CMP on levee slope. Vegetation debris and mud on outlet box. Needs cleaning and clearing.

* Location LS : Land Side N/A : Not Applicable WS : Water Side CR : Crown	** Rating A : Acceptable M : Minimally Acceptable U : Unacceptable	N : Not Inspected/Rated C : Corrected A/W : Acceptable but Monitor & Maintain	+ Issue Type Ma : Maintenance Deficiency Ob : Design & System Obsolescence En : Enforcement
--	--	---	---

**Flood Control Project Maintenance
Levee Inspections**

Maintenance Issue Types Only, Levee Inspection Report By Mile - Fall 2018

Butte County Department of Public Works

Waterway	Bank	Unit Miles	Inspection Start/End	Inspector
Unit No. 04 Sycamore and Dry Creeks	Right	2.86	09/18/2018 09/18/2018	Bob Duffey

LM Start	0.35	Rating **	M	Issue No.	27 (cont)	
LM End	0.35	Issue Type +	Ma	Location *		
Category	Supplemental			GPS Latitude/Longitude		
				Start		End
Item	DWR UCIP LMA Responsibility			39.775682 °		39.775682 °
				-121.850375 °		-121.850375 °
DWR ID	19281					
Comment Code						
Inspector Comment						
FS_ID:32023 DS_ID:19281 EP_NO: N/A Repair Type: Non-Urgent Crossing Status: Found UCIP Comments: Needs cleaning and clearing the culvert. FIELD_STRUCT_DESC: 24-inch corrugated metal gravity drainage pipe through the levee, 8 feet below the crown. Flap gate on the waterside (WS) end. Concrete U-shaped headwall on each end. Grouted riprap apron on the landside (LS) end. Grouted riprap spillway on the WS end. [Additional Reference(s): DWR Levee Log, 1992. USACE Sacramento O&M Manual 504, May 1965, (HLM 0.36)]. FS Date: 3/7/2014						

LM Start	0.35	Rating **	M	Issue No.	27 (cont)
LM End	0.35	Issue Type +	Ma	Location *	

Photo 2 of 3 : UCIP_FA_2018_32023_58504.jpg



LS view: U type concrete headwall and CMP on levee slope. Pebbles and mud on inlet box.

Photo 3 of 3 : UCIP_FA_2018_32023_58503.jpg



LS view: inside view of the CM pipe. Needs cleaning and clearing the pipe.

* Location LS : Land Side N/A : Not Applicable WS : Water Side CR : Crown	** Rating A : Acceptable M : Minimally Acceptable U : Unacceptable N : Not Inspected/Rated C : Corrected A/W : Acceptable but Monitor & Maintain	+ Issue Type Ma : Maintenance Deficiency Ob : Design & System Obsolescence En : Enforcement
--	---	---

**Flood Control Project Maintenance
Levee Inspections**

Maintenance Issue Types Only, Levee Inspection Report By Mile - Fall 2018

Butte County Department of Public Works

Waterway	Bank	Unit Miles	Inspection Start/End	Inspector
Unit No. 04 Sycamore and Dry Creeks	Right	2.86	09/18/2018 09/18/2018	Bob Duffey

LM Start	0.35	Rating **	M	Issue No.	21
LM End	0.39	Issue Type +	Ma	Location *	LS
Category	Earthen Levee			GPS Latitude/Longitude	
				Start	End
Item	Trim / Thin Trees			39.775672 °	39.775220 °
				-121.850301 °	-121.849805 °
DWR ID	DWR_NA0003_04_f_2016_21				
Comment Code					
T2 : Thin trees to allow visibility of the ground and room to flood fight.					
Inspector Comment					
Trim trees. Remove trees smaller than 4-inches in diamter at chest height.					

Photo 1 of 1 : FA_2018_NA0003_68_21_20180905_00007.jpg



View of the overgrown trees along the landside toe.

LM Start	0.92	Rating **	M	Issue No.	28
LM End	0.92	Issue Type +	Ma	Location *	
Category	Supplemental			GPS Latitude/Longitude	
				Start	End
Item	DWR UCIP LMA Responsibility			39.775704 °	39.775704 °
				-121.850901 °	-121.850901 °
DWR ID	19287				
Comment Code					
Inspector Comment					
FS_ID:32143 DS_ID:19287 EP_NO: N/A Repair Type: Non-Urgent Crossing Status: Found UCIP Comments: Needs cleaning and clearing the culvert. FIELD_STRUCT_DESC: 24-inch corrugated metal gravity drainage pipe through the levee, 9 feet below the crown. Flap gate on the waterside (WS) end. Concrete U-shaped headwall on each end. Grouted riprap apron on the landside (LS) end. Grouted riprap spillway on the WS end. [Additional Reference(s): DWR Levee Log, 1992. USACE Sacramento O&M Manual 504, May 1965, (HLM 0.96)]. FS Date: 3/7/2014					

Photo 1 of 2 : UCIP_FA_2018_32143_58641.jpg



WS view: U type concrete headwall and CMP on levee slope. Soil/mud on outlet box. Needs cleaning and clearing.

* Location LS : Land Side N/A : Not Applicable WS : Water Side CR : Crown	** Rating A : Acceptable M : Minimally Acceptable U : Unacceptable	N : Not Inspected/Rated C : Corrected A/W : Acceptable but Monitor & Maintain	+ Issue Type Ma : Maintenance Deficiency Ob : Design & System Obsolescence En : Enforcement
--	--	---	---

**Flood Control Project Maintenance
Levee Inspections**

Maintenance Issue Types Only, Levee Inspection Report By Mile - Fall 2018

Butte County Department of Public Works

Waterway	Bank	Unit Miles	Inspection Start/End	Inspector
Unit No. 04 Sycamore and Dry Creeks	Right	2.86	09/18/2018 09/18/2018	Bob Duffey

LM Start	0.92	Rating **	M	Issue No.	28 (cont)	
LM End	0.92	Issue Type +	Ma	Location *		
Category	Supplemental			GPS Latitude/Longitude		
				Start		End
Item	DWR UCIP LMA Responsibility			39.775704 °		39.775704 °
				-121.850901 °		-121.850901 °
DWR ID	19287					
Comment Code						
Inspector Comment						
FS_ID:32143 DS_ID:19287 EP_NO: N/A Repair Type: Non-Urgent Crossing Status: Found UCIP Comments: Needs cleaning and clearing the culvert. FIELD_STRUCT_DESC: 24-inch corrugated metal gravity drainage pipe through the levee, 9 feet below the crown. Flap gate on the waterside (WS) end. Concrete U-shaped headwall on each end. Grouted riprap apron on the landside (LS) end. Grouted riprap spillway on the WS end. [Additional Reference(s): DWR Levee Log, 1992. USACE Sacramento O&M Manual 504, May 1965, (HLM 0.96)]. FS Date: 3/7/2014						

Photo 2 of 2 : UCIP_FA_2018_32143_58640.jpg



LS view: U type concrete headwall and CMP on levee slope. Vegetation and mud on inlet box.

LM Start	0.94	Rating **	M	Issue No.	30
LM End	0.94	Issue Type +	Ma	Location *	
Category	Supplemental			GPS Latitude/Longitude	
				Start	End
Item	DWR UCIP LMA Responsibility			39.775899 °	39.775899 °
				-121.851124 °	-121.851124 °
DWR ID	19288				
Comment Code					
Inspector Comment					
FS_ID:32144 DS_ID:19288 EP_NO: N/A Repair Type: Non-Urgent Crossing Status: Found UCIP Comments: Slide gate in CMP riser on waterside. No access to CMP riser.Needs cleaning and clearing the culvert. FIELD_STRUCT_DESC: 24-inch corrugated metal gravity drainage pipe through the levee and under the channel, 9.5 feet below the crown. Slide gate in a pipe riser on the waterside (WS) slope. Concrete U-shaped headwall on the landside (LS) end. [Additional Reference(s): DWR Levee Log, 1992. USACE Sacramento O&M Manual 504, May 1965, (HLM 0.98)]. FS Date: 3/7/2014					

Photo 1 of 3 : UCIP_FA_2018_32144_58644.jpg



LS view: U type concrete headwall of CMP culvert on levee slope. Vegetation debris and mud on inlet box.

* Location LS : Land Side N/A : Not Applicable WS : Water Side CR : Crown	** Rating A : Acceptable M : Minimally Acceptable U : Unacceptable	N : Not Inspected/Rated C : Corrected A/W : Acceptable but Monitor & Maintain	+ Issue Type Ma : Maintenance Deficiency Ob : Design & System Obsolescence En : Enforcement
--	--	---	---

**Flood Control Project Maintenance
Levee Inspections**

Maintenance Issue Types Only, Levee Inspection Report By Mile - Fall 2018

Butte County Department of Public Works

Waterway	Bank	Unit Miles	Inspection Start/End	Inspector
Unit No. 04 Sycamore and Dry Creeks	Right	2.86	09/18/2018 09/18/2018	Bob Duffey

LM Start	0.94	Rating **	M	Issue No.	30 (cont)	
LM End	0.94	Issue Type +	Ma	Location *		
Category	Supplemental			GPS Latitude/Longitude		
				Start	End	
Item	DWR UCIP LMA Responsibility			39.775899 °	39.775899 °	
				-121.851124 °	-121.851124 °	
DWR ID	19288					
Comment Code						
Inspector Comment						
FS_ID:32144 DS_ID:19288 EP_NO: N/A Repair Type: Non-Urgent Crossing Status: Found UCIP Comments: Slide gate in CMP riser on waterside. No access to CMP riser.Needs cleaning and clearing the culvert. FIELD_STRUCT_DESC: 24-inch corrugated metal gravity drainage pipe through the levee and under the channel, 9.5 feet below the crown. Slide gate in a pipe riser on the waterside (WS) slope. Concrete U-shaped headwall on the landside (LS) end. [Additional Reference(s): DWR Levee Log, 1992. USACE Sacramento O&M Manual 504, May 1965, (HLM 0.98)]. FS Date: 3/7/2014						

LM Start	0.94	Rating **	M	Issue No.	30 (cont)
LM End	0.94	Issue Type +	Ma	Location *	

Photo 2 of 3 : UCIP_FA_2018_32144_58643.jpg



LS view: close view of vegetation debris and mud on inlet box.

Photo 3 of 3 : UCIP_FA_2018_32144_58642.jpg



WS view: slide gate in CMP riser on waterside. No access to CMP riser.

* Location LS : Land Side N/A : Not Applicable WS : Water Side CR : Crown	** Rating A : Acceptable M : Minimally Acceptable U : Unacceptable	N : Not Inspected/Rated C : Corrected A/W : Acceptable but Monitor & Maintain	+ Issue Type Ma : Maintenance Deficiency Ob : Design & System Obsolescence En : Enforcement
--	--	---	---

**Flood Control Project Maintenance
Levee Inspections**

Maintenance Issue Types Only, Levee Inspection Report By Mile - Fall 2018

Butte County Department of Public Works

Waterway	Bank	Unit Miles	Inspection Start/End	Inspector
Unit No. 04 Sycamore and Dry Creeks	Right	2.86	09/18/2018 09/18/2018	Bob Duffey

LM Start	1.04	Rating **	M	Issue No.	23
LM End	1.04	Issue Type +	Ma	Location *	LS
Category	Earthen Levee			GPS Latitude/Longitude	
				Start	End
Item	Vegetation			39.776589 °	39.776589 °
				-121.852600 °	-121.852600 °
DWR ID	DWR_NA0003_04_f_2016_23				
Comment Code					
V2 : Remove the wild growth other than native grasses from the levee slopes.					
Inspector Comment					

Photo 1 of 1 : FA_2018_NA0003_68_23_20180905_00009.jpg



View of the blackberries blocking visibility and access.

LM Start	1.11	Rating **	M	Issue No.	31
LM End	1.11	Issue Type +	Ma	Location *	
Category	Supplemental			GPS Latitude/Longitude	
				Start	End
Item	DWR UCIP LMA Responsibility			39.776709 °	39.776709 °
				-121.853932 °	-121.853932 °
DWR ID	19289				
Comment Code					
Inspector Comment					
FS_ID:31963 DS_ID:19289 EP_NO: N/A Repair Type: Non-Urgent Crossing Status: Found UCIP Comments: Needs cleaning and clearing the culvert. FIELD_STRUCT_DESC: 24-inch corrugated metal gravity drainage pipe through the levee, 11 feet below the crown. Flap gate on the waterside (WS) end. Concrete U-shaped headwall on each end. Grouted riprap apron on the landside (LS) end. Grouted riprap spillway on the WS end. [Additional Reference(s): DWR Levee Log, 1992. USACE Sacramento O&M Manual 504, May 1965, (HLM 1.15)]. FS Date: 3/7/2014					

Photo 1 of 3 : UCIP_FA_2018_31963_58384.jpg



WS view: U type concrete headwall and CMP on levee slope. Vegetation debris and mud on outlet box. Needs cleaning and clearing.

* Location LS : Land Side N/A : Not Applicable WS : Water Side CR : Crown	** Rating A : Acceptable M : Minimally Acceptable U : Unacceptable	N : Not Inspected/Rated C : Corrected A/W : Acceptable but Monitor & Maintain	+ Issue Type Ma : Maintenance Deficiency Ob : Design & System Obsolescence En : Enforcement
--	--	---	---

**Flood Control Project Maintenance
Levee Inspections**

Maintenance Issue Types Only, Levee Inspection Report By Mile - Fall 2018

Butte County Department of Public Works

Waterway	Bank	Unit Miles	Inspection Start/End	Inspector
Unit No. 04 Sycamore and Dry Creeks	Right	2.86	09/18/2018 09/18/2018	Bob Duffey

LM Start	1.11	Rating **	M	Issue No.	31 (cont)	
LM End	1.11	Issue Type +	Ma	Location *		
Category	Supplemental			GPS Latitude/Longitude		
				Start	End	
Item	DWR UCIP LMA Responsibility			39.776709 °	39.776709 °	
				-121.853932 °	-121.853932 °	
DWR ID	19289					
Comment Code						
Inspector Comment						
FS_ID:31963 DS_ID:19289 EP_NO: N/A Repair Type: Non-Urgent Crossing Status: Found UCIP Comments: Needs cleaning and clearing the culvert. FIELD_STRUCT_DESC: 24-inch corrugated metal gravity drainage pipe through the levee, 11 feet below the crown. Flap gate on the waterside (WS) end. Concrete U-shaped headwall on each end. Grouted riprap apron on the landside (LS) end. Grouted riprap spillway on the WS end. [Additional Reference(s): DWR Levee Log, 1992. USACE Sacramento O&M Manual 504, May 1965, (HLM 1.15)]. FS Date: 3/7/2014						

Photo 2 of 3 : UCIP_FA_2018_31963_58383.jpg



LS view: U type concrete headwall and CMP on levee slope. Vegetation debris and mud on inlet box.

LM Start	1.11	Rating **	M	Issue No.	31 (cont)
LM End	1.11	Issue Type +	Ma	Location *	

Photo 3 of 3 : UCIP_FA_2018_31963_58385.jpg



LS view: inside view of CMP on levee slope. Needs cleaning and clearing.

* Location LS : Land Side N/A : Not Applicable WS : Water Side CR : Crown	** Rating A : Acceptable M : Minimally Acceptable U : Unacceptable	N : Not Inspected/Rated C : Corrected A/W : Acceptable but Monitor & Maintain	+ Issue Type Ma : Maintenance Deficiency Ob : Design & System Obsolescence En : Enforcement
--	--	---	---

**Flood Control Project Maintenance
Levee Inspections**

Maintenance Issue Types Only, Levee Inspection Report By Mile - Fall 2018

Butte County Department of Public Works

Waterway	Bank	Unit Miles	Inspection Start/End	Inspector
Unit No. 04 Sycamore and Dry Creeks	Right	2.86	09/18/2018 09/18/2018	Bob Duffey

LM Start	1.16	Rating **	M	Issue No.	17
LM End	1.22	Issue Type +	Ma	Location *	LS
Category	Earthen Levee			GPS Latitude/Longitude	
				Start	End
Item	Trim / Thin Trees			39.777128°	39.777580°
				-121.854763°	-121.855612°
DWR ID	DWR_NA0003_04_f_2015_17				
Comment Code					
T1 : Trim trees to at least five feet above ground level.					
Inspector Comment					
Remove the trees that are overhanging the levee slope.					

Photo 1 of 1 : FA_2018_NA0003_68_17_20180905_00004.jpg



View of the trees overhanging the levee slope.

LM Start	1.35	Rating **	M	Issue No.	32
LM End	1.35	Issue Type +	Ma	Location *	
Category	Supplemental			GPS Latitude/Longitude	
				Start	End
Item	DWR UCIP LMA Responsibility			39.778370 °	39.778370 °
				-121.857904 °	-121.857904 °
DWR ID	19290				
Comment Code					
Inspector Comment					
FS_ID:31964 DS_ID:19290 EP_NO: N/A Repair Type: Non-Urgent Crossing Status: Found UCIP Comments: Needs cleaning and clearing the culvert. FIELD_STRUCT_DESC: 24-inch corrugated metal gravity drainage pipe through the levee, 13 feet below the crown. Flap gate on the waterside (WS) end. Concrete U-shaped headwall on each end. Grouted riprap apron on the landside (LS) end. Grouted riprap spillway on the WS end. [Additional Reference(s): DWR Levee Log, 1992. USACE Sacramento O&M Manual 504, May 1965, (HLM 1.41)]. FS Date: 3/7/2014					

Photo 1 of 2 : UCIP_FA_2018_31964_58389.jpg



WS view: U type concrete headwall and CMP on levee slope. Vegetation debris and mud in outlet box. Needs cleaning and clearing.

* Location LS : Land Side N/A : Not Applicable WS : Water Side CR : Crown	** Rating A : Acceptable M : Minimally Acceptable U : Unacceptable	N : Not Inspected/Rated C : Corrected A/W : Acceptable but Monitor & Maintain	+ Issue Type Ma : Maintenance Deficiency Ob : Design & System Obsolescence En : Enforcement
--	--	---	---

**Flood Control Project Maintenance
Levee Inspections**

Maintenance Issue Types Only, Levee Inspection Report By Mile - Fall 2018

Butte County Department of Public Works

Waterway	Bank	Unit Miles	Inspection Start/End	Inspector
Unit No. 04 Sycamore and Dry Creeks	Right	2.86	09/18/2018 09/18/2018	Bob Duffey

LM Start	1.35	Rating **	M	Issue No.	32 (cont)
LM End	1.35	Issue Type +	Ma	Location *	
Category	Supplemental			GPS Latitude/Longitude	
				Start	End
Item	DWR UCIP LMA Responsibility			39.778370 °	39.778370 °
				-121.857904 °	-121.857904 °
DWR ID	19290				
Comment Code					
Inspector Comment					
FS_ID:31964 DS_ID:19290 EP_NO: N/A Repair Type: Non-Urgent Crossing Status: Found UCIP Comments: Needs cleaning and clearing the culvert. FIELD_STRUCT_DESC: 24-inch corrugated metal gravity drainage pipe through the levee, 13 feet below the crown. Flap gate on the waterside (WS) end. Concrete U-shaped headwall on each end. Grouted riprap apron on the landside (LS) end. Grouted riprap spillway on the WS end. [Additional Reference(s): DWR Levee Log, 1992. USACE Sacramento O&M Manual 504, May 1965, (HLM 1.41)]. FS Date: 3/7/2014					

Photo 2 of 2 : UCIP_FA_2018_31964_58388.jpg



LS view: U type concrete headwall and CMP on levee slope. Vegetation debris and mud in inlet box.

LM Start	1.60	Rating **	A	Issue No.	16
LM End	1.60	Issue Type +	Ma	Location *	LS
Category	Earthen Levee			GPS Latitude/Longitude	
				Start	End
Item	Vegetation			39.778768°	39.778768°
				-121.862573°	-121.862573°
DWR ID	DWR_NA0003_04_f_2018_16				
Comment Code					
V1 : Control annual grass and weeds on the levee slopes and easements.					
Inspector Comment					
The vegetation has been removed from both slopes.					

Photo 1 of 1 : FA_2018_NA0003_68_16_20181001_00039.jpg



View of no vegetation on both slopes.

* Location LS : Land Side N/A : Not Applicable WS : Water Side CR : Crown	** Rating A : Acceptable M : Minimally Acceptable U : Unacceptable	N : Not Inspected/Rated C : Corrected A/W : Acceptable but Monitor & Maintain	+ Issue Type Ma : Maintenance Deficiency Ob : Design & System Obsolescence En : Enforcement
--	--	---	---

**Flood Control Project Maintenance
Levee Inspections**

Maintenance Issue Types Only, Levee Inspection Report By Mile - Fall 2018

Butte County Department of Public Works

Waterway	Bank	Unit Miles	Inspection Start/End	Inspector
Unit No. 04 Sycamore and Dry Creeks	Right	2.86	09/18/2018 09/18/2018	Bob Duffey

LM Start	2.04	Rating **	C	Issue No.	18
LM End	2.08	Issue Type +	Ma	Location *	LS
Category	Earthen Levee			GPS Latitude/Longitude	
				Start	End
Item	Trim / Thin Trees			39.781669 °	39.782025 °
				-121.869804 °	-121.870252 °
DWR ID	DWR_NA0003_04_s_2016_18				
Comment Code					
T2 : Thin trees to allow visibility of the ground and room to flood fight.					
Inspector Comment					
Trees and shrubbery was trimmed to allow visibility on landside toe.					

No Photos

LM Start	2.15	Rating **	M	Issue No.	33
LM End	2.15	Issue Type +	Ma	Location *	
Category	Supplemental			GPS Latitude/Longitude	
				Start	End
Item	DWR UCIP LMA Responsibility			39.782777 °	39.782777 °
				-121.871179 °	-121.871179 °
DWR ID	19291				
Comment Code					
Inspector Comment					
FS_ID:31965 DS_ID:19291 EP_NO: N/A Repair Type: Non-Urgent Crossing Status: Found UCIP Comments: Needs cleaning and clearing the culvert. FIELD_STRUCT_DESC: 24-inch corrugated metal gravity drainage pipe through the levee, 11 feet below the crown. Flap gate on the waterside (WS) end. Concrete U-shaped headwall on each end. Grouted riprap apron on the landside (LS) end. Grouted riprap spillway on the WS end. [Additional Reference(s): DWR Levee Log, 1992. USACE Sacramento O&M Manual 504, May 1965, (HLM 2.22)]. FS Date: 3/7/2014					

Photo 1 of 3 : UCIP_FA_2018_31965_58395.jpg



WS view: U type concrete headwall and CMP on levee slope. Vegetation debris and mud in outlet box. Needs cleaning and clearing.

* Location LS : Land Side N/A : Not Applicable WS : Water Side CR : Crown	** Rating A : Acceptable M : Minimally Acceptable U : Unacceptable N : Not Inspected/Rated C : Corrected A/W : Acceptable but Monitor & Maintain	+ Issue Type Ma : Maintenance Deficiency Ob : Design & System Obsolescence En : Enforcement
--	---	---

**Flood Control Project Maintenance
Levee Inspections**

Maintenance Issue Types Only, Levee Inspection Report By Mile - Fall 2018

Butte County Department of Public Works

Waterway	Bank	Unit Miles	Inspection Start/End	Inspector
Unit No. 04 Sycamore and Dry Creeks	Right	2.86	09/18/2018 09/18/2018	Bob Duffey

LM Start	2.15	Rating **	M	Issue No.	33 (cont)	
LM End	2.15	Issue Type +	Ma	Location *		
Category	Supplemental			GPS Latitude/Longitude		
				Start		End
Item	DWR UCIP LMA Responsibility			39.782777 °		39.782777 °
				-121.871179 °		-121.871179 °
DWR ID	19291					
Comment Code						
Inspector Comment						
FS_ID:31965 DS_ID:19291 EP_NO: N/A Repair Type: Non-Urgent Crossing Status: Found UCIP Comments: Needs cleaning and clearing the culvert. FIELD_STRUCT_DESC: 24-inch corrugated metal gravity drainage pipe through the levee, 11 feet below the crown. Flap gate on the waterside (WS) end. Concrete U-shaped headwall on each end. Grouted riprap apron on the landside (LS) end. Grouted riprap spillway on the WS end. [Additional Reference(s): DWR Levee Log, 1992. USACE Sacramento O&M Manual 504, May 1965, (HLM 2.22)]. FS Date: 3/7/2014						

LM Start	2.15	Rating **	M	Issue No.	33 (cont)
LM End	2.15	Issue Type +	Ma	Location *	

Photo 2 of 3 : UCIP_FA_2018_31965_58394.jpg



LS view: U type concrete headwall and CMP on levee slope. Vegetation debris and mud in inlet box.

Photo 3 of 3 : UCIP_FA_2018_31965_58393.jpg



LS view: inside view of CMP on levee slope. Needs cleaning and clearing.

* Location LS : Land Side N/A : Not Applicable WS : Water Side CR : Crown	** Rating A : Acceptable M : Minimally Acceptable U : Unacceptable	N : Not Inspected/Rated C : Corrected A/W : Acceptable but Monitor & Maintain	+ Issue Type Ma : Maintenance Deficiency Ob : Design & System Obsolescence En : Enforcement
--	--	---	---

**Flood Control Project Maintenance
Levee Inspections**

Maintenance Issue Types Only, Levee Inspection Report By Mile - Fall 2018

Butte County Department of Public Works

Waterway	Bank	Unit Miles	Inspection Start/End	Inspector
Unit No. 04 Sycamore and Dry Creeks	Right	2.86	09/18/2018 09/18/2018	Bob Duffey

LM Start	2.47	Rating **	M	Issue No.	34
LM End	2.47	Issue Type +	Ma	Location *	
Category	Supplemental			GPS Latitude/Longitude	
				Start	End
Item	DWR UCIP LMA Responsibility			39.784244 °	39.784244 °
				-121.876810 °	-121.876810 °
DWR ID	19292				
Comment Code					
Inspector Comment					
FS_ID:31966 DS_ID:19292 EP_NO: N/A Repair Type: Non-Urgent Crossing Status: Found UCIP Comments: Needs cleaning and clearing the culvert. FIELD_STRUCT_DESC: 24-inch corrugated metal gravity drainage pipe through the levee, 11 feet below the crown. Flap gate on the waterside (WS) end. Concrete U-shaped headwall on each end. Grouted riprap apron on the landside (LS) end. Grouted riprap spillway on the WS end. [Additional Reference(s): DWR Levee Log, 1992. USACE Sacramento O&M Manual 504, May 1965, (HLM 2.56)]. FS Date: 3/7/2014					

LM Start	2.47	Rating **	M	Issue No.	34 (cont)
LM End	2.47	Issue Type +	Ma	Location *	

Photo 1 of 3 : UCIP_FA_2018_31966_58401.jpg



WS view: U type concrete headwall and grouted riprap spillway on levee slope.

Photo 2 of 3 : UCIP_FA_2018_31966_58400.jpg



WS view: U type concrete headwall and CMP on levee slope. Vegetation debris and mud on outlet box. Needs cleaning and clearing.

* Location LS : Land Side N/A : Not Applicable WS : Water Side CR : Crown	** Rating A : Acceptable M : Minimally Acceptable U : Unacceptable	N : Not Inspected/Rated C : Corrected A/W : Acceptable but Monitor & Maintain	+ Issue Type Ma : Maintenance Deficiency Ob : Design & System Obsolescence En : Enforcement
--	--	---	---

**Flood Control Project Maintenance
Levee Inspections**

Maintenance Issue Types Only, Levee Inspection Report By Mile - Fall 2018

Butte County Department of Public Works

Waterway	Bank	Unit Miles	Inspection Start/End	Inspector
Unit No. 04 Sycamore and Dry Creeks	Right	2.86	09/18/2018 09/18/2018	Bob Duffey

LM Start	2.47	Rating **	M	Issue No.	34 (cont)
LM End	2.47	Issue Type +	Ma	Location *	
Category	Supplemental			GPS Latitude/Longitude	
				Start	End
Item	DWR UCIP LMA Responsibility			39.784244 °	39.784244 °
				-121.876810 °	-121.876810 °
DWR ID	19292				
Comment Code					
Inspector Comment					
FS_ID:31966 DS_ID:19292 EP_NO: N/A Repair Type: Non-Urgent Crossing Status: Found UCIP Comments: Needs cleaning and clearing the culvert. FIELD_STRUCT_DESC: 24-inch corrugated metal gravity drainage pipe through the levee, 11 feet below the crown. Flap gate on the waterside (WS) end. Concrete U-shaped headwall on each end. Grouted riprap apron on the landside (LS) end. Grouted riprap spillway on the WS end. [Additional Reference(s): DWR Levee Log, 1992. USACE Sacramento O&M Manual 504, May 1965, (HLM 2.56)]. FS Date: 3/7/2014					

Photo 3 of 3 : UCIP_FA_2018_31966_58399.jpg



LS view: U type concrete headwall and CMP on levee slope. Vegetation debris and mud in pipe and inlet box.

* Location LS : Land Side N/A : Not Applicable WS : Water Side CR : Crown	** Rating A : Acceptable M : Minimally Acceptable U : Unacceptable	N : Not Inspected/Rated C : Corrected A/W : Acceptable but Monitor & Maintain	+ Issue Type Ma : Maintenance Deficiency Ob : Design & System Obsolescence En : Enforcement
--	--	---	---

Butte County Department of Public Works

View of no vegetation on both slopes.

View of the damaged slope by foot traffic.

View of the levee with native vegetation on both slopes.

Page 1 of 2

**Flood Control Project Maintenance
Levee Inspections**

Maintenance Issue Types Only, Levee Inspection Report By Mile - Fall 2018

Butte County Department of Public Works

Waterway	Bank	Unit Miles	Inspection Start/End	Inspector
Unit No. 05 Big Chico Diversion	Left	1.85	09/18/2018 09/18/2018	Bob Duffey

LM Start	0.85	Rating **	A	Issue No.	14 (cont)	
LM End	1.85	Issue Type +	Ma	Location *	LS	
Category	Earthen Levee			GPS Latitude/Longitude		
				Start		End
Item	Vegetation			39.764702 °		39.775426 °
				-121.803562 °		-121.814201 °
DWR ID	DWR_NA0003_05_f_2017_14					
Comment Code						
V2 : Remove the wild growth other than native grasses from the levee slopes.						
Inspector Comment						
There are native grasses on both slopes.						

Photo 2 of 2 : FA_2018_NA0003_69_14_20180905_00005.jpg



View of native grasses on both slopes.

LM Start	0.89	Rating **	A/W	Issue No.	6
LM End	0.89	Issue Type +	Ma	Location *	LS
Category	Earthen Levee			GPS Latitude/Longitude	
				Start	End
Item	Vegetation			39.764397°	39.764397°
				-121.803335°	-121.803335°
DWR ID	DWR_NA0003_05_f_2014_6				
Comment Code					
V4 : Elderberries are blocking visibility and flood fight capability.					
Inspector Comment					
Trim branches 1-inch in diameter or less to keep bush from becoming an issue.					

No Photos

LM Start	1.25	Rating **	M	Issue No.	13
LM End	1.25	Issue Type +	Ma	Location *	LS
Category	Earthen Levee			GPS Latitude/Longitude	
				Start	End
Item	Slope Stability			39.768621°	39.768621°
				-121.807052°	-121.807052°
DWR ID	DWR_NA0003_05_f_2016_13				
Comment Code					
S2 : Repair the levee slope damaged by foot traffic and prevent access where possible.					
Inspector Comment					

Photo 1 of 1 : FA_2018_NA0003_69_13_20180905_00003.jpg



View of the damaged slope by foot traffic.

* Location LS : Land Side N/A : Not Applicable WS : Water Side CR : Crown	** Rating A : Acceptable M : Minimally Acceptable U : Unacceptable	N : Not Inspected/Rated C : Corrected A/W : Acceptable but Monitor & Maintain	+ Issue Type Ma : Maintenance Deficiency Ob : Design & System Obsolescence En : Enforcement
--	--	--	---