

**Flood Control Project Maintenance  
Levee Inspections**

## Maintenance Issue Types Only, Levee Inspection Report By Mile - Fall 2017

### Butte County Department of Public Works

Waterway	Bank	Unit Miles	Inspection Start/End	Inspector
Unit No. 01 Mud Creek	Right	6.80	10/11/2017 10/11/2017	Bob Duffey

LM Start		Rating **	A	Issue No.	<b>6</b>
LM End		Issue Type +	Ma	Location *	N/A
Category	Earthen Levee		GPS Latitude/Longitude		
			Start	End	
Item	Emergency Supplies & Equipment			°	°
				°	°
DWR ID	DWR_NA0003_01_s _ 2013_6				
Comment Code					
Inspector Comment					
LMA has flood fight supplies & equipment.					

No Photos

LM Start		Rating **	A	Issue No.	<b>10</b>
LM End		Issue Type +	Ma	Location *	N/A
Category	Earthen Levee		GPS Latitude/Longitude		
			Start	End	
Item	Flood Preparedness & Training			°	°
				°	°
DWR ID	DWR_NA0003_01_s _ 2013_10				
Comment Code					
Inspector Comment					
The LMA completed flood fight training in 2016.					

No Photos

<b>* Location</b> LS : Land Side    N/A : Not Applicable WS : Water Side CR : Crown	<b>** Rating</b> A : Acceptable M : Minimally Acceptable U : Unacceptable	N : Not Inspected/Rated C : Corrected A/W : Acceptable but Monitor & Maintain	<b>+ Issue Type</b> Ma : Maintenance Deficiency Ob : Design & System Obsolescence En : Enforcement
--	--	---	---

**Flood Control Project Maintenance  
Levee Inspections**

**Maintenance Issue Types Only, Levee Inspection Report By Mile - Fall 2017**

**Butte County Department of Public Works**

Waterway	Bank	Unit Miles	Inspection Start/End	Inspector
Unit No. 01 Mud Creek	Right	6.80	10/11/2017 10/11/2017	Bob Duffey

LM Start		Rating **	A	Issue No.	58
LM End		Issue Type +	Ma	Location *	N/A
Category	Earthen Levee		GPS Latitude/Longitude		
			Start	End	
Item	Operations & Maintenance Manuals				
DWR ID	DWR_NA0003_01_f_2017_58				
Comment Code					
Inspector Comment					
The LMA has O&M Manuals.					

No Photos

LM Start	0.25	Rating **	A/W	Issue No.	62
LM End	0.25	Issue Type +	Ma	Location *	
Category	Supplemental		GPS Latitude/Longitude		
			Start	End	
Item	DWR UCIP LMA Responsibility		39.729219°	39.729219°	
			-121.933437°	-121.933437°	
DWR ID					
Comment Code					
Inspector Comment					
FS_ID:29705 DS_ID:19209 EP_NO: N/A Repair Type: No Action Needed Crossing Status: Found UCIP Comments: Looks cleaned recently. FIELD_STRUCT_DESC: 24-inch CM pipe through the levee, 12.5 feet below crown. Flap gate on the waterward end. Concrete "U" headwalls on both ends. Grouted riprap apron on the landward end. Grouted riprap spillway on the waterward end. O&M Manual Sac 504, May 1965. FS Date: 2/20/2014					

Photo 1 of 3 : UCIP\_FA\_2017\_29705\_54924.jpg



WS view: U typed concrete headwall, flapgate on levee slope.

* Location	** Rating	+ Issue Type
LS : Land Side WS : Water Side CR : Crown	A : Acceptable M : Minimally Acceptable U : Unacceptable	Ma : Maintenance Deficiency Ob : Design & System Obsolescence En : Enforcement
N/A : Not Applicable	N : Not Inspected/Rated C : Corrected A/W : Acceptable but Monitor & Maintain	

**Flood Control Project Maintenance  
Levee Inspections**

**Maintenance Issue Types Only, Levee Inspection Report By Mile - Fall 2017**

**Butte County Department of Public Works**

Waterway	Bank	Unit Miles	Inspection Start/End	Inspector
Unit No. 01 Mud Creek	Right	6.80	10/11/2017 10/11/2017	Bob Duffey

LM Start	0.25	Rating **	A/W	Issue No.	62 (cont)
LM End	0.25	Issue Type +	Ma	Location *	
Category	Supplemental			GPS Latitude/Longitude	
				Start	End
Item	DWR UCIP LMA Responsibility			39.729219 °	39.729219 °
				-121.933437 °	-121.933437 °
DWR ID					

**Comment Code**

**Inspector Comment**

FS\_ID:29705  
DS\_ID:19209  
EP\_NO: N/A  
Repair Type: No Action Needed  
Crossing Status: Found  
UCIP Comments: Looks cleaned recently.  
FIELD\_STRUCT\_DESC: 24-inch CM pipe through the levee, 12.5 feet below crown. Flap gate on the waterward end. Concrete "U" headwalls on both ends. Grouted riprap apron on the landward end. Grouted riprap spillway on the waterward end. O&M Manual Sac 504, May 1965.  
FS Date: 2/20/2014

LM Start	<b>0.25</b>	Rating **	A/W	Issue No.	<b>62 (cont)</b>
LM End	<b>0.25</b>	Issue Type +	Ma	Location *	

Photo 2 of 3 : UCIP\_FA\_2017\_29705\_54923.jpg



LS view: U typed concrete headwall, CMP on levee slope.

Photo 3 of 3 : UCIP\_FA\_2017\_29705\_54922.jpg



LS view: inside view of CMP on levee slope. Looks clean and clear.

<b>* Location</b> LS : Land Side    N/A : Not Applicable WS : Water Side CR : Crown		<b>** Rating</b> A : Acceptable M : Minimally Acceptable U : Unacceptable N : Not Inspected/Rated C : Corrected A/W : Acceptable but Monitor & Maintain		<b>+ Issue Type</b> Ma : Maintenance Deficiency Ob : Design & System Obsolescence En : Enforcement
--	--	---	--	---

**Flood Control Project Maintenance  
Levee Inspections**

## Maintenance Issue Types Only, Levee Inspection Report By Mile - Fall 2017

### Butte County Department of Public Works

Waterway	Bank	Unit Miles	Inspection Start/End	Inspector
Unit No. 01 Mud Creek	Right	6.80	10/11/2017 10/11/2017	Bob Duffey

LM Start	1.00	Rating **	M	Issue No.	63	
LM End	1.00	Issue Type +	Ma	Location *		
Category	Supplemental			GPS Latitude/Longitude		
				Start		End
Item	DWR UCIP LMA Responsibility			39.739268 °		39.739268 °
				-121.931891 °		-121.931891 °
DWR ID						
Comment Code						
Inspector Comment						
FS_ID:32044						
DS_ID:19211						
EP_NO: N/A						
Repair Type: Non-Urgent						
Crossing Status: Found						
UCIP Comments: Vegetation debris on waterside. Needs clearing and cleaning.						
FIELD_STRUCT_DESC: 24-inch CM pipe through the levee, 12.0 feet below the crown. Flap gate on the waterward end. Concrete "U" headwalls on both ends. Grouted riprap apron on the landward end. Grouted riprap spillway on the waterward end. O&M Manual Sac 504, May 1965.						
FS Date: 2/20/2014						

LM Start	<b>1.00</b>	Rating **	M	Issue No.	<b>63 (cont)</b>
LM End	<b>1.00</b>	Issue Type +	Ma	Location *	

Photo 1 of 3 : UCIP\_FA\_2017\_32044\_58543.jpg



WS view: U typed concrete headwall, pipe, and flapgate on levee slope.

Photo 2 of 3 : UCIP\_FA\_2017\_32044\_58542.jpg



WS view: vegetation debris blocking outlet.

<b>* Location</b> LS : Land Side    N/A : Not Applicable WS : Water Side CR : Crown		<b>** Rating</b> A : Acceptable M : Minimally Acceptable U : Unacceptable		<b>+ Issue Type</b> Ma : Maintenance Deficiency Ob : Design & System Obsolescence En : Enforcement	
		N : Not Inspected/Rated C : Corrected A/W : Acceptable but Monitor & Maintain			



**Flood Control Project Maintenance  
Levee Inspections**

**Maintenance Issue Types Only, Levee Inspection Report By Mile - Fall 2017**

**Butte County Department of Public Works**

Waterway	Bank	Unit Miles	Inspection Start/End	Inspector
Unit No. 01 Mud Creek	Right	6.80	10/11/2017 10/11/2017	Bob Duffey

LM Start	1.00	Rating **	M	Issue No.	63 (cont)	
LM End	1.00	Issue Type +	Ma	Location *		
Category	Supplemental			GPS Latitude/Longitude		
				Start		End
Item	DWR UCIP LMA Responsibility			39.739268 °	39.739268 °	
				-121.931891 °	-121.931891 °	
DWR ID						
Comment Code						
Inspector Comment						
FS_ID:32044						
DS_ID:19211						
EP_NO: N/A						
Repair Type: Non-Urgent						
Crossing Status: Found						
UCIP Comments: Vegetation debris on waterside. Needs clearing and cleaning.						
FIELD_STRUCT_DESC: 24-inch CM pipe through the levee, 12.0 feet below the crown. Flap gate on the waterward end. Concrete "U" headwalls on both ends. Grouted riprap apron on the landward end. Grouted riprap spillway on the waterward end. O&M Manual Sac 504, May 1965.						
FS Date: 2/20/2014						

Photo 3 of 3 : UCIP\_FA\_2017\_32044\_58541.jpg



LS view: U typed concrete headwall and CMP on levee slope.

<b>* Location</b> LS : Land Side    N/A : Not Applicable WS : Water Side CR : Crown	<b>** Rating</b> A : Acceptable M : Minimally Acceptable U : Unacceptable  N : Not Inspected/Rated C : Corrected A/W : Acceptable but Monitor & Maintain	<b>+ Issue Type</b> Ma : Maintenance Deficiency Ob : Design & System Obsolescence En : Enforcement
--	---	---

**Flood Control Project Maintenance  
Levee Inspections**

**Maintenance Issue Types Only, Levee Inspection Report By Mile - Fall 2017**

**Butte County Department of Public Works**

Waterway	Bank	Unit Miles	Inspection Start/End	Inspector
Unit No. 01 Mud Creek	Right	6.80	10/11/2017 10/11/2017	Bob Duffey

LM Start	1.90	Rating **	A/W	Issue No.	64
LM End	1.90	Issue Type +	Ma	Location *	
Category	Supplemental			GPS Latitude/Longitude	
				Start	End
Item	DWR UCIP LMA Responsibility			39.747563 °	39.747563 °
				-121.920170 °	-121.920170 °
DWR ID					

**Comment Code**

**Inspector Comment**

FS\_ID:50142  
DS\_ID:19212  
EP\_NO: N/A  
Repair Type: No Action Needed  
Crossing Status: Found  
UCIP Comments: 08/29/2016: Shawn Bates of NA0003 has cleared the LS and WS of debris and blockage; WS gate functions properly now. Crossing has been downgraded from Urgent to No Action Needed. (K. Fazel - UCIP)08/11/2016: Same as last inspection. (K. Fazel - UCIP)02/20/2014: No riprap spillway on waterside. Needs cleaning and clearing of debris. Flap gate was not fully closed. (P. Amatya - UCIP)  
FIELD\_STRUCT\_DESC: 24-inch corrugated metal pipe through the levee, 13 feet below the crown. Flap gate on the waterside (WS) end. Concrete "U" headwalls on both ends. Grouted riprap apron on the landside (LS) end. Grouted riprap spillway on the WS end. [Additional Reference(s): DWR Levee Log, 2005. USACE Sacramento O&M Manual 504, May 1965 (HLM 1.95)].  
FS Date: 8/11/2016

LM Start	<b>1.90</b>	Rating **	A/W	Issue No.	<b>64 (cont)</b>
LM End	<b>1.90</b>	Issue Type +	Ma	Location *	

Photo 1 of 3 : UCIP\_FA\_2017\_50142\_55886.jpg



WS view: U type concrete headwall, flapgate on levee slope. Gate was not fully closed.

Photo 2 of 3 : UCIP\_FA\_2017\_50142\_55885.jpg



LS view: U type concrete headwall and CMP on levee slope. Vegetation debris blocking inlet.

<b>* Location</b> LS : Land Side    N/A : Not Applicable WS : Water Side CR : Crown		<b>** Rating</b> A : Acceptable M : Minimally Acceptable U : Unacceptable		N : Not Inspected/Rated C : Corrected A/W : Acceptable but Monitor & Maintain		<b>+ Issue Type</b> Ma : Maintenance Deficiency Ob : Design & System Obsolescence En : Enforcement	
--	--	--	--	---	--	---	--

**Flood Control Project Maintenance  
Levee Inspections**

## Maintenance Issue Types Only, Levee Inspection Report By Mile - Fall 2017

### Butte County Department of Public Works

Waterway	Bank	Unit Miles	Inspection Start/End	Inspector
Unit No. 01 Mud Creek	Right	6.80	10/11/2017 10/11/2017	Bob Duffey

LM Start	1.90	Rating **	A/W	Issue No.	64 (cont)
LM End	1.90	Issue Type +	Ma	Location *	
Category	Supplemental			GPS Latitude/Longitude	
				Start	End
Item	DWR UCIP LMA Responsibility			39.747563 °	39.747563 °
				-121.920170 °	-121.920170 °
DWR ID					

Comment Code

Inspector Comment

FS\_ID:50142  
DS\_ID:19212  
EP\_NO: N/A  
Repair Type: No Action Needed  
Crossing Status: Found  
UCIP Comments: 08/29/2016: Shawn Bates of NA0003 has cleared the LS and WS of debris and blockage; WS gate functions properly now. Crossing has been downgraded from Urgent to No Action Needed. (K. Fazel - UCIP)08/11/2016: Same as last inspection. (K. Fazel - UCIP)02/20/2014: No riprap spillway on waterside. Needs cleaning and clearing of debris. Flap gate was not fully closed. (P. Amatya - UCIP)  
FIELD\_STRUCT\_DESC: 24-inch corrugated metal pipe through the levee, 13 feet below the crown. Flap gate on the waterside (WS) end. Concrete "U" headwalls on both ends. Grouted riprap apron on the landside (LS) end. Grouted riprap spillway on the WS end. [Additional Reference(s): DWR Levee Log, 2005. USACE Sacramento O&M Manual 504, May 1965 (HLM 1.95)].  
FS Date: 8/11/2016

Photo 3 of 3 : UCIP\_FA\_2017\_50142\_55884.jpg



LS view: inside view of CMP on levee slope. Needs cleaning and clearing.

LM Start	3.03	Rating **	M	Issue No.	66
LM End	3.03	Issue Type +	Ma	Location *	
Category	Supplemental			GPS Latitude/Longitude	
				Start	End
Item	DWR UCIP LMA Responsibility			39.761224 °	39.761224 °
				-121.911108 °	-121.911108 °
DWR ID					

Comment Code

Inspector Comment

FS\_ID:30294  
DS\_ID:19216  
EP\_NO: N/A  
Repair Type: Non-Urgent  
Crossing Status: Found  
UCIP Comments: Inlet and outlet needs cleaning and clearing of debris.  
FIELD\_STRUCT\_DESC: 24-inch CM pipe through levee, 8.5 feet below the crown. Flap gate on the waterward end. Concrete "U" headwalls on both ends. Grouted riprap apron on the landward end. Grouted riprap spillway on the waterward end. O&M Manual Sac 504, May 1965.  
FS Date: 2/20/2014

Photo 1 of 2 : UCIP\_FA\_2017\_30294\_55704.jpg



WS view: U type concrete headwall, flapgate on levee slope.

* Location		** Rating		+ Issue Type	
LS : Land Side	N/A : Not Applicable	A : Acceptable	N : Not Inspected/Rated	Ma : Maintenance Deficiency	
WS : Water Side		M : Minimally Acceptable	C : Corrected	Ob : Design & System Obsolescence	
CR : Crown		U : Unacceptable	A/W : Acceptable but Monitor & Maintain	En : Enforcement	



**Flood Control Project Maintenance  
Levee Inspections**

## Maintenance Issue Types Only, Levee Inspection Report By Mile - Fall 2017

### Butte County Department of Public Works

Waterway	Bank	Unit Miles	Inspection Start/End	Inspector
Unit No. 01 Mud Creek	Right	6.80	10/11/2017 10/11/2017	Bob Duffey

LM Start	3.03	Rating **	M	Issue No.	66 (cont)	
LM End	3.03	Issue Type +	Ma	Location *		
Category	Supplemental			GPS Latitude/Longitude		
				Start	End	
Item	DWR UCIP LMA Responsibility			39.761224 °	39.761224 °	
				-121.911108 °	-121.911108 °	
DWR ID						
Comment Code						
Inspector Comment						
FS_ID:30294 DS_ID:19216 EP_NO: N/A Repair Type: Non-Urgent Crossing Status: Found UCIP Comments: Inlet and outlet needs cleaning and clearing of debris. FIELD_STRUCT_DESC: 24-inch CM pipe through levee, 8.5 feet below the crown. Flap gate on the waterward end. Concrete "U" headwalls on both ends. Grouted riprap apron on the landward end. Grouted riprap spillway on the waterward end. O&M Manual Sac 504, May 1965. FS Date: 2/20/2014						

Photo 2 of 2 : UCIP\_FA\_2017\_30294\_55703.jpg



LS view: U type concrete headwall and CMP on levee slope. Debris blocking the inlet pipe.

LM Start	3.18	Rating **	M	Issue No.	67
LM End	3.18	Issue Type +	Ma	Location *	
Category	Supplemental			GPS Latitude/Longitude	
				Start	End
Item	DWR UCIP LMA Responsibility			39.763067 °	39.763067 °
				-121.909608 °	-121.909608 °
DWR ID					
Comment Code					
Inspector Comment					
FS_ID:30295					
DS_ID:19217					
EP_NO: N/A					
Repair Type: Non-Urgent					
Crossing Status: Found					
UCIP Comments: It needs cleaning and clearing in inlet and outlet ends.					
FIELD_STRUCT_DESC: 24-inch CM pipe through the levee, 9.0 feet below the crown. Flap gate on the waterward end. Concrete "U" headwalls on both ends. Grouted riprap apron on the landward end. Grouted riprap spillway on the waterward end. O&M Manual Sac 504, May 1965.					
FS Date: 2/20/2014					

Photo 1 of 2 : UCIP\_FA\_2017\_30295\_55706.jpg



WS view: U type concrete headwall, flapgate on levee slope. Vegetation debris blocking the outlet.

<b>* Location</b> LS : Land Side    N/A : Not Applicable WS : Water Side CR : Crown		<b>** Rating</b> A : Acceptable M : Minimally Acceptable U : Unacceptable		<b>+ Issue Type</b> Ma : Maintenance Deficiency Ob : Design & System Obsolescence En : Enforcement	
		N : Not Inspected/Rated C : Corrected A/W : Acceptable but Monitor & Maintain			

**Flood Control Project Maintenance  
Levee Inspections**

**Maintenance Issue Types Only, Levee Inspection Report By Mile - Fall 2017**

**Butte County Department of Public Works**

Waterway	Bank	Unit Miles	Inspection Start/End	Inspector
Unit No. 01 Mud Creek	Right	6.80	10/11/2017 10/11/2017	Bob Duffey

LM Start	3.18	Rating **	M	Issue No.	67 (cont)	
LM End	3.18	Issue Type +	Ma	Location *		
Category	Supplemental			GPS Latitude/Longitude		
				Start	End	
Item	DWR UCIP LMA Responsibility			39.763067 °	39.763067 °	
				-121.909608 °	-121.909608 °	
DWR ID						
Comment Code						
Inspector Comment						
FS_ID:30295						
DS_ID:19217						
EP_NO: N/A						
Repair Type: Non-Urgent						
Crossing Status: Found						
UCIP Comments: It needs cleaning and clearing in inlet and outlet ends.						
FIELD_STRUCT_DESC: 24-inch CM pipe through the levee, 9.0 feet below the crown. Flap gate on the waterward end. Concrete "U" headwalls on both ends. Grouted riprap apron on the landward end. Grouted riprap spillway on the waterward end. O&M Manual Sac 504, May 1965.						
FS Date: 2/20/2014						

Photo 2 of 2 : UCIP\_FA\_2017\_30295\_55705.jpg



LS view: U type concrete headwall and CMP on levee slope. Vegetation debris blocking the inlet.

LM Start	3.39	Rating **	A	Issue No.	61
LM End	3.39	Issue Type +	Ma	Location *	LS
Category	Earthen Levee			GPS Latitude/Longitude	
				Start	End
Item	Vegetation			39.765443 °	39.765443 °
				-121.907288 °	-121.907288 °
DWR ID	DWR_NA0003_01_f_2017_61				
Comment Code					
V1 : Control annual grass and weeds on the levee slopes and easements.					
Inspector Comment					
There is no vegetation on both slopes.					

Photo 1 of 1 : FA\_2017\_NA0003\_64\_61\_20171019\_00093.jpg



View of no vegetation on both slopes.

<b>* Location</b> LS : Land Side    N/A : Not Applicable WS : Water Side CR : Crown	<b>** Rating</b> A : Acceptable M : Minimally Acceptable U : Unacceptable	N : Not Inspected/Rated C : Corrected A/W : Acceptable but Monitor & Maintain	<b>+ Issue Type</b> Ma : Maintenance Deficiency Ob : Design & System Obsolescence En : Enforcement
--	--	---	---



**Flood Control Project Maintenance  
Levee Inspections**

**Maintenance Issue Types Only, Levee Inspection Report By Mile - Fall 2017**

**Butte County Department of Public Works**

Waterway	Bank	Unit Miles	Inspection Start/End	Inspector
Unit No. 01 Mud Creek	Right	6.80	10/11/2017 10/11/2017	Bob Duffey

LM Start	3.39	Rating **	M	Issue No.	68
LM End	3.39	Issue Type +	Ma	Location *	
Category	Supplemental			GPS Latitude/Longitude	
				Start	End
Item	DWR UCIP LMA Responsibility			39.765440 °	39.765440 °
				-121.907261 °	-121.907261 °
DWR ID					
Comment Code					
Inspector Comment					
FS_ID:30310 DS_ID:19218 EP_NO: N/A Repair Type: Non-Urgent Crossing Status: Found UCIP Comments: Needs cleaning and clearing of debris. FIELD_STRUCT_DESC: 24-inch CM pipe through the levee, 10.0 feet below the crown. Flap gate on the waterward end. Concrete "U" headwalls on both ends. Grouted riprap apron on the landward end. Grouted riprap spillway on the waterward end. O&M Manual Sac 504, May 1965. FS Date: 2/20/2014					

Photo 1 of 3 : UCIP\_FA\_2017\_30310\_55741.jpg



WS view: U type concrete headwall, pipe, and flapgate on levee slope. Vegetation debris blocking outlet.

LM Start	3.39	Rating **	M	Issue No.	68 (cont)
LM End	3.39	Issue Type +	Ma	Location *	

Photo 2 of 3 : UCIP\_FA\_2017\_30310\_55740.jpg



LS view: U type concrete headwall and CMP on levee slope.

<b>* Location</b> LS : Land Side    N/A : Not Applicable WS : Water Side CR : Crown		<b>** Rating</b> A : Acceptable M : Minimally Acceptable U : Unacceptable		N : Not Inspected/Rated C : Corrected A/W : Acceptable but Monitor & Maintain		<b>+ Issue Type</b> Ma : Maintenance Deficiency Ob : Design & System Obsolescence En : Enforcement	
--	--	--	--	---	--	---	--

**Flood Control Project Maintenance  
Levee Inspections**

**Maintenance Issue Types Only, Levee Inspection Report By Mile - Fall 2017**

**Butte County Department of Public Works**

Waterway	Bank	Unit Miles	Inspection Start/End	Inspector
Unit No. 01 Mud Creek	Right	6.80	10/11/2017 10/11/2017	Bob Duffey

LM Start	3.39	Rating **	M	Issue No.	68 (cont)	
LM End	3.39	Issue Type +	Ma	Location *		
Category	Supplemental			GPS Latitude/Longitude		
				Start	End	
Item	DWR UCIP LMA Responsibility			39.765440 °	39.765440 °	
				-121.907261 °	-121.907261 °	
DWR ID						
Comment Code						
Inspector Comment						
FS_ID:30310						
DS_ID:19218						
EP_NO: N/A						
Repair Type: Non-Urgent						
Crossing Status: Found						
UCIP Comments: Needs cleaning and clearing of debris.						
FIELD_STRUCT_DESC: 24-inch CM pipe through the levee, 10.0 feet below the crown. Flap gate on the waterward end. Concrete "U" headwalls on both ends. Grouted riprap apron on the landward end. Grouted riprap spillway on the waterward end. O&M Manual Sac 504, May 1965.						
FS Date: 2/20/2014						

Photo 3 of 3 : UCIP\_FA\_2017\_30310\_55739.jpg



LS view: inside view of CMP on levee slope. Needs cleaning and clearing.

LM Start	3.97	Rating **	M	Issue No.	69
LM End	3.97	Issue Type +	Ma	Location *	
Category	Supplemental			GPS Latitude/Longitude	
				Start	End
Item	DWR UCIP LMA Responsibility			39.771293 °	39.771293 °
				-121.900247 °	-121.900247 °
DWR ID					
Comment Code					
Inspector Comment					
FS_ID:30311 DS_ID:19219 EP_NO: N/A Repair Type: Non-Urgent Crossing Status: Found UCIP Comments: Needs cleaning and clearing of debris in both ends of the pipe. FIELD_STRUCT_DESC: 24-inch CM pipe through the levee, 9.0 feet below the crown. Flap gate on the waterward end. Concrete "U" headwalls on both ends. Grouted riprap apron on the landward end. Grouted riprap spillway on the waterward end. O&M Manual Sac 504, May 1965. FS Date: 2/20/2014					

Photo 1 of 2 : UCIP\_FA\_2017\_30311\_55743.jpg



WS view: U type concrete headwall, pipe, and flapgate on levee slope. Vegetation debris blocking outlet.

<b>* Location</b> LS : Land Side    N/A : Not Applicable WS : Water Side CR : Crown		<b>** Rating</b> A : Acceptable                      N : Not Inspected/Rated M : Minimally Acceptable        C : Corrected U : Unacceptable                  A/W : Acceptable but Monitor & Maintain		<b>+ Issue Type</b> Ma : Maintenance Deficiency Ob : Design & System Obsolescence En : Enforcement
--	--	---	--	---





**Flood Control Project Maintenance  
Levee Inspections**

**Maintenance Issue Types Only, Levee Inspection Report By Mile - Fall 2017**

**Butte County Department of Public Works**

Waterway	Bank	Unit Miles	Inspection Start/End	Inspector
Unit No. 01 Mud Creek	Right	6.80	10/11/2017 10/11/2017	Bob Duffey

LM Start	4.26	Rating **	M	Issue No.	5
LM End	4.32	Issue Type +	Ma	Location *	WS
Category	Supplemental			GPS Latitude/Longitude	
				Start	End
Item	2015 USACE Erosion Survey, DRAFT			39.773257 °	39.773969 °
				-121.895618 °	-121.895078 °
DWR ID	DWR_NA0003_01_s_2016_5				
Comment Code					
Inspector Comment					
2011 - Two large erosion scallops at the toe from a rotational failure. Deep cracks along the slope indicate the potential for further failures. 2015: Site is part of the extended inventory, last inspected 2011. [2015 Site ID: MUD_4-4_R]					

No Photos

LM Start	4.27	Rating **	M	Issue No.	33
LM End	4.27	Issue Type +	Ma	Location *	LS
Category	Earthen Levee			GPS Latitude/Longitude	
				Start	End
Item	Animal Control			39.773398 °	39.773398 °
				-121.895765 °	-121.895765 °
DWR ID	DWR_NA0003_01_f_2015_33				
Comment Code					
A1 : Exterminate rodents and backfill and compact or grout burrows.					
Inspector Comment					
Repair the rodent holes along the landside slope.					

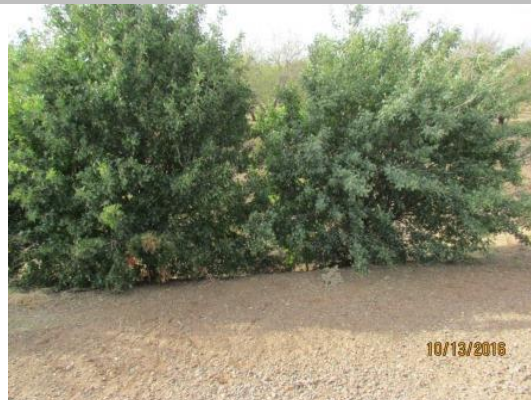
Photo 1 of 1 : FA\_2017\_NA0003\_64\_33\_20170911\_00016.jpg



View of the rodent holes along the landside slope.

LM Start	4.45	Rating **	M	Issue No.	53
LM End	4.45	Issue Type +	Ma	Location *	LS
Category	Earthen Levee			GPS Latitude/Longitude	
				Start	End
Item	Trim / Thin Trees			39.775789 °	39.775789 °
				-121.894048 °	-121.894048 °
DWR ID	DWR_NA0003_01_f_2016_53				
Comment Code					
T1 : Trim trees to at least five feet above ground level.					
Inspector Comment					

Photo 1 of 1 : FA\_2017\_NA0003\_64\_53\_20170911\_00033.jpg



View of the trees along the landside toe.

\* Location  
LS : Land Side    N/A : Not Applicable  
WS : Water Side  
CR : Crown

\*\* Rating  
A : Acceptable                      N : Not Inspected/Rated  
M : Minimally Acceptable        C : Corrected  
U : Unacceptable                  A/W : Acceptable but Monitor & Maintain

+ Issue Type  
Ma : Maintenance Deficiency  
Ob : Design & System Obsolescence  
En : Enforcement

**Flood Control Project Maintenance  
Levee Inspections**

## Maintenance Issue Types Only, Levee Inspection Report By Mile - Fall 2017

### Butte County Department of Public Works

Waterway	Bank	Unit Miles	Inspection Start/End	Inspector
Unit No. 01 Mud Creek	Right	6.80	10/11/2017 10/11/2017	Bob Duffey

LM Start	4.46	Rating **	M	Issue No.	70
LM End	4.46	Issue Type +	Ma	Location *	
Category	Supplemental			GPS Latitude/Longitude	
				Start	End
Item	DWR UCIP LMA Responsibility			39.775905 °	39.775905 °
				-121.893980 °	-121.893980 °
DWR ID					
Comment Code					
Inspector Comment					
FS_ID:30312					
DS_ID:19220					
EP_NO: N/A					
Repair Type: Non-Urgent					
Crossing Status: Found					
UCIP Comments: Needs cleaning and clearing of debris.					
FIELD_STRUCT_DESC: 24-inch CM pipe through the levee, 13.0 feet below the crown. Flap gate on the waterward end. Concrete "U" headwalls on both ends. Grouted riprap apron on the landward end. Grouted riprap spillway on the waterward end. O&M Manual Sac 504, May 1965.					
FS Date: 2/20/2014					

Photo 1 of 2 : UCIP\_FA\_2017\_30312\_55745.jpg



WS view: U type concrete headwall, pipe, and flapgate on levee slope.  
Vegetation debris blocking outlet.

LM Start	<b>4.46</b>	Rating **	M	Issue No.	<b>70 (cont)</b>
LM End	<b>4.46</b>	Issue Type +	Ma	Location *	

Photo 2 of 2 : UCIP\_FA\_2017\_30312\_55744.jpg



LS view: U type concrete headwall and CMP on levee slope. Needs cleaning and clearing of debris.

<b>* Location</b> LS : Land Side    N/A : Not Applicable WS : Water Side CR : Crown		<b>** Rating</b> A : Acceptable M : Minimally Acceptable U : Unacceptable		N : Not Inspected/Rated C : Corrected A/W : Acceptable but Monitor & Maintain		<b>+ Issue Type</b> Ma : Maintenance Deficiency Ob : Design & System Obsolescence En : Enforcement	
--	--	--	--	---	--	---	--



**Flood Control Project Maintenance  
Levee Inspections**

**Maintenance Issue Types Only, Levee Inspection Report By Mile - Fall 2017**

**Butte County Department of Public Works**

Waterway	Bank	Unit Miles	Inspection Start/End	Inspector
Unit No. 01 Mud Creek	Right	6.80	10/11/2017 10/11/2017	Bob Duffey

LM Start	4.81	Rating **	M	Issue No.	71
LM End	4.81	Issue Type +	Ma	Location *	
Category	Supplemental			GPS Latitude/Longitude	
				Start	End
Item	DWR UCIP LMA Responsibility			39.780244 °	39.780244 °
				-121.891267 °	-121.891267 °
DWR ID					

**Comment Code**

**Inspector Comment**

FS\_ID:30388  
DS\_ID:19221  
EP\_NO: N/A  
Repair Type: Non-Urgent  
Crossing Status: Found  
UCIP Comments: CM Standpipe intake. Intake pipe with air vent. Steel rib-bar grit cover on the standpipe on landside levee toe. Needs cleaning and clearing on both ends of the pipe.  
FIELD\_STRUCT\_DESC: 24-inch CM pipe through the levee, 15.0 feet below the crown. Flap gate on the waterward end. Concrete "U" headwalls on waterside ends. Grouted riprap spillway on the waterward end. CM Standpipe intake. Intake pipe with air vent. Steel rib-bar grit cover on the standpipe on landside levee toe. O&M Manual Sac 504, May 1965.  
FS Date: 2/20/2014

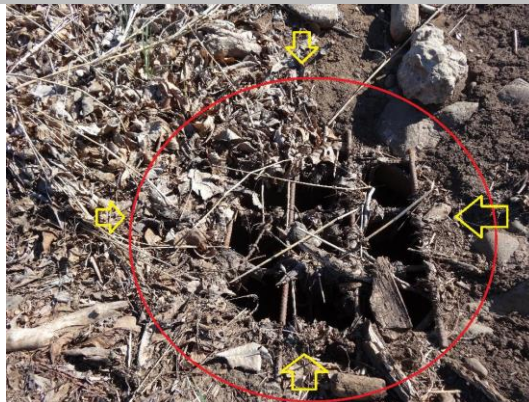
LM Start	<b>4.81</b>	Rating **	M	Issue No.	<b>71 (cont)</b>
LM End	<b>4.81</b>	Issue Type +	Ma	Location *	

Photo 1 of 2 : UCIP\_FA\_2017\_30388\_55891.jpg



WS view: U type concrete headwall, pipe, and flapgate on levee slope. Vegetation/soil debris blocking outlet.

Photo 2 of 2 : UCIP\_FA\_2017\_30388\_55890.jpg



LS view: Underground CM standpipe intake with steel grit on levee toe.

<b>* Location</b> LS : Land Side    N/A : Not Applicable WS : Water Side CR : Crown		<b>** Rating</b> A : Acceptable M : Minimally Acceptable U : Unacceptable N : Not Inspected/Rated C : Corrected A/W : Acceptable but Monitor & Maintain		<b>+ Issue Type</b> Ma : Maintenance Deficiency Ob : Design & System Obsolescence En : Enforcement
--	--	---	--	---

**Flood Control Project Maintenance  
Levee Inspections**

**Maintenance Issue Types Only, Levee Inspection Report By Mile - Fall 2017**

**Butte County Department of Public Works**

Waterway	Bank	Unit Miles	Inspection Start/End	Inspector
Unit No. 01 Mud Creek	Right	6.80	10/11/2017 10/11/2017	Bob Duffey

LM Start	5.09	Rating **	A/W	Issue No.	73
LM End	5.09	Issue Type +	Ma	Location *	
Category	Supplemental			GPS Latitude/Longitude	
				Start	End
Item	DWR UCIP LMA Responsibility			39.783636 °	39.783636 °
				-121.888463 °	-121.888463 °
DWR ID					
Comment Code					
Inspector Comment					
FS_ID:30327					
DS_ID:19222					
EP_NO: N/A					
Repair Type: No Action Needed					
Crossing Status: Found					
UCIP Comments: Slide gate in CM stadpipe on waterside levee slope.					
FIELD_STRUCT_DESC: 36-inch CM pipe through the levee, 17.0 feet					
below the crown. Slide gate in CM standpipe on waterside levee slope.					
Flap gate on the waterward end. Concrete "U" headwalls on both ends.					
Grouted riprap apron on the landward end. Grouted riprap spillway on					
the waterward end. O&M Manual Sac 504, May 1965.					
FS Date: 2/20/2014					

Photo 1 of 3 : UCIP\_FA\_2017\_30327\_55768.jpg



WS view: U type concrete headwall, pipe, and flapgate on levee slope.

LM Start	<b>5.09</b>	Rating **	A/W	Issue No.	<b>73 (cont)</b>
LM End	<b>5.09</b>	Issue Type +	Ma	Location *	

Photo 2 of 3 : UCIP\_FA\_2017\_30327\_55767.jpg



WS view: CM standpipe with slide gate on levee slope.

<b>* Location</b> LS : Land Side    N/A : Not Applicable WS : Water Side CR : Crown		<b>** Rating</b> A : Acceptable M : Minimally Acceptable U : Unacceptable		N : Not Inspected/Rated C : Corrected A/W : Acceptable but Monitor & Maintain		<b>+ Issue Type</b> Ma : Maintenance Deficiency Ob : Design & System Obsolescence En : Enforcement	
--	--	--	--	---	--	---	--

**Flood Control Project Maintenance  
Levee Inspections**

**Maintenance Issue Types Only, Levee Inspection Report By Mile - Fall 2017**

**Butte County Department of Public Works**

Waterway	Bank	Unit Miles	Inspection Start/End	Inspector
Unit No. 01 Mud Creek	Right	6.80	10/11/2017 10/11/2017	Bob Duffey

LM Start	5.09	Rating **	A/W	Issue No.	73 (cont)	
LM End	5.09	Issue Type +	Ma	Location *		
Category	Supplemental			GPS Latitude/Longitude		
				Start		End
Item	DWR UCIP LMA Responsibility			39.783636 °	39.783636 °	
				-121.888463 °	-121.888463 °	
DWR ID						
Comment Code						
Inspector Comment						
FS_ID:30327						
DS_ID:19222						
EP_NO: N/A						
Repair Type: No Action Needed						
Crossing Status: Found						
UCIP Comments: Slide gate in CM stadpipe on waterside levee slope.						
FIELD_STRUCT_DESC: 36-inch CM pipe through the levee, 17.0 feet						
below the crown. Slide gate in CM standpipe on waterside levee slope.						
Flap gate on the waterward end. Concrete "U" headwalls on both ends.						
Grouted riprap apron on the landward end. Grouted riprap spillway on						
the waterward end. O&M Manual Sac 504, May 1965.						
FS Date: 2/20/2014						

Photo 3 of 3 : UCIP\_FA\_2017\_30327\_55766.jpg



LS view: U type concrete headwall and CMP on levee slope.

LM Start	5.20	Rating **	M	Issue No.	55
LM End	5.20	Issue Type +	Ma	Location *	LS
Category	Earthen Levee			GPS Latitude/Longitude	
				Start	End
Item	Vegetation			39.784234 °	39.784234 °
				-121.886589 °	-121.886589 °
DWR ID	DWR_NA0003_01_f_2016_55				
Comment Code					
V2 : Remove the wild growth other than native grasses from the levee slopes.					
Inspector Comment					

Photo 1 of 1 : FA\_2017\_NA0003\_64\_55\_20170911\_00034.jpg



View of the blackberries blocking visibility and access.

<b>* Location</b> LS : Land Side    N/A : Not Applicable WS : Water Side CR : Crown	<b>** Rating</b> A : Acceptable M : Minimally Acceptable U : Unacceptable	N : Not Inspected/Rated C : Corrected A/W : Acceptable but Monitor & Maintain	<b>+ Issue Type</b> Ma : Maintenance Deficiency Ob : Design & System Obsolescence En : Enforcement
--	--	---	---



**Flood Control Project Maintenance  
Levee Inspections**

**Maintenance Issue Types Only, Levee Inspection Report By Mile - Fall 2017**

**Butte County Department of Public Works**

Waterway	Bank	Unit Miles	Inspection Start/End	Inspector
Unit No. 01 Mud Creek	Right	6.80	10/11/2017 10/11/2017	Bob Duffey

LM Start	5.89	Rating **	M	Issue No.	44
LM End	5.89	Issue Type +	Ma	Location *	LS
Category	Earthen Levee			GPS Latitude/Longitude	
				Start	End
Item	Vegetation			39.792121 °	39.792121 °
				-121.886836 °	-121.886836 °
DWR ID	DWR_NA0003_01_f_2016_44				
Comment Code					
V2 : Remove the wild growth other than native grasses from the levee slopes.					
Inspector Comment					
Blackberry bramble					

No Photos

LM Start	5.91	Rating **	M	Issue No.	43
LM End	5.91	Issue Type +	Ma	Location *	LS
Category	Earthen Levee			GPS Latitude/Longitude	
				Start	End
Item	Vegetation			39.792482 °	39.792482 °
				-121.887078 °	-121.887078 °
DWR ID	DWR_NA0003_01_f_2016_43				
Comment Code					
V2 : Remove the wild growth other than native grasses from the levee slopes.					
Inspector Comment					
Blackberry bramble					

No Photos

LM Start	5.96	Rating **	M	Issue No.	22
LM End	5.96	Issue Type +	Ma	Location *	LS
Category	Earthen Levee			GPS Latitude/Longitude	
				Start	End
Item	Vegetation			39.793116 °	39.793116 °
				-121.887296 °	-121.887296 °
DWR ID	DWR_NA0003_01_f_2016_22				
Comment Code					
V4 : Elderberries are blocking visibility and flood fight capability.					
Inspector Comment					
Blackberry bramble					

Photo 1 of 1 : FA\_2017\_NA0003\_64\_22\_20170911\_00005.jpg



View of the blackberries blocking visibility and access.

* Location		** Rating		+ Issue Type	
LS : Land Side	N/A : Not Applicable	A : Acceptable	N : Not Inspected/Rated	Ma : Maintenance Deficiency	
WS : Water Side		M : Minimally Acceptable	C : Corrected	Ob : Design & System Obsolescence	
CR : Crown		U : Unacceptable	A/W : Acceptable but Monitor & Maintain	En : Enforcement	

**Flood Control Project Maintenance  
Levee Inspections**

**Maintenance Issue Types Only, Levee Inspection Report By Mile - Fall 2017**

**Butte County Department of Public Works**

Waterway	Bank	Unit Miles	Inspection Start/End	Inspector
Unit No. 01 Mud Creek	Right	6.80	10/11/2017 10/11/2017	Bob Duffey

LM Start	5.98	Rating **	U	Issue No.	37
LM End	6.07	Issue Type +	Ma	Location *	LS
Category	Earthen Levee			GPS Latitude/Longitude	
				Start	End
Item	Vegetation			39.793411 °	39.794580 °
				-121.887310 °	-121.886759 °
DWR ID	DWR_NA0003_01_s _ 2016_37				
Comment Code					
V7 : Trees / Woody Vegetation					
Inspector Comment					
Various overgrown vegetation completely obscuring landside toe visibility.					

Photo 1 of 1 : FA\_2017\_NA0003\_64\_37\_20170911\_00019.jpg



04/25/2016: Trim trees on L/S slope.

LM Start	6.08	Rating **	M	Issue No.	36
LM End	6.08	Issue Type +	Ma	Location *	LS
Category	Earthen Levee			GPS Latitude/Longitude	
				Start	End
Item	Vegetation			39.794708 °	39.794708 °
				-121.886616 °	-121.886616 °
DWR ID	DWR_NA0003_01_s _ 2016_36				
Comment Code					
V2 : Remove the wild growth other than native grasses from the levee slopes.					
Inspector Comment					
Blackberry bramble					

No Photos

<b>* Location</b> LS : Land Side    N/A : Not Applicable WS : Water Side CR : Crown		<b>** Rating</b> A : Acceptable                      N : Not Inspected/Rated M : Minimally Acceptable        C : Corrected U : Unacceptable                  A/W : Acceptable but Monitor & Maintain		<b>+ Issue Type</b> Ma : Maintenance Deficiency Ob : Design & System Obsolescence En : Enforcement
--	--	---	--	---



**Flood Control Project Maintenance  
Levee Inspections**

**Maintenance Issue Types Only, Levee Inspection Report By Mile - Fall 2017**

**Butte County Department of Public Works**

Waterway	Bank	Unit Miles	Inspection Start/End	Inspector
Unit No. 01 Mud Creek	Right	6.80	10/11/2017 10/11/2017	Bob Duffey

LM Start	6.16	Rating **	M	Issue No.	34
LM End	6.16	Issue Type +	Ma	Location *	LS
Category	Earthen Levee			GPS Latitude/Longitude	
				Start	End
Item	Vegetation			39.795428 °	39.795428 °
				-121.885306 °	-121.885306 °
DWR ID	DWR_NA0003_01_s_2016_34				
Comment Code					
V2 : Remove the wild growth other than native grasses from the levee slopes.					
Inspector Comment					
Blackberry bramble on landside toe blocking visibility.					

Photo 1 of 1 : FA\_2017\_NA0003\_64\_34\_20170911\_00017.jpg



Trim vegetation at L/S toe.

\* Location  
LS : Land Side    N/A : Not Applicable  
WS : Water Side  
CR : Crown

\*\* Rating  
A : Acceptable                      N : Not Inspected/Rated  
M : Minimally Acceptable        C : Corrected  
U : Unacceptable                  A/W : Acceptable but Monitor & Maintain

+ Issue Type  
Ma : Maintenance Deficiency  
Ob : Design & System Obsolescence  
En : Enforcement

**Flood Control Project Maintenance  
Levee Inspections**

**Maintenance Issue Types Only, Levee Inspection Report By Mile - Fall 2017**

**Butte County Department of Public Works**

Waterway	Bank	Unit Miles	Inspection Start/End	Inspector
Unit No. 02 Mud Creek	Left	7.96	10/11/2017 10/11/2017	Bob Duffey

LM Start	0.23	Rating **	M	Issue No.	41
LM End	0.23	Issue Type +	Ma	Location *	
Category	Supplemental			GPS Latitude/Longitude	
				Start	End
Item	DWR UCIP LMA Responsibility			39.797416 °	39.797416 °
				-121.881675 °	-121.881675 °
DWR ID					
Comment Code					
Inspector Comment					
FS_ID:31667 DS_ID:19234 EP_NO: N/A Repair Type: Non-Urgent Crossing Status: Found UCIP Comments: Needs cleaning and clearing the culvert. FIELD_STRUCT_DESC: 24-inch CM pipe through the levee, 6.6 feet below the crown. Flap gate on the waterward end. Concrete "U" headwalls on both ends. Grouted riprap spillway on the waterward end. O&M Manual Sac 504, May 1965. FS Date: 3/11/2014					

Photo 1 of 3 : UCIP\_FA\_2017\_31667\_57968.jpg



WS view: CMP culvert with U type concrete headwall. Vegetation debris blocking outlet box.

LM Start	<b>0.23</b>	Rating **	M	Issue No.	<b>41 (cont)</b>
LM End	<b>0.23</b>	Issue Type +	Ma	Location *	

Photo 2 of 3 : UCIP\_FA\_2017\_31667\_57967.jpg



WS view: U type concrete headwall, pipe, and flapgate on levee slope. Vegetation debris on outlet box.

<b>* Location</b> LS : Land Side    N/A : Not Applicable WS : Water Side CR : Crown		<b>** Rating</b> A : Acceptable                      N : Not Inspected/Rated M : Minimally Acceptable        C : Corrected U : Unacceptable                  A/W : Acceptable but Monitor & Maintain		<b>+ Issue Type</b> Ma : Maintenance Deficiency Ob : Design & System Obsolescence En : Enforcement
--	--	---	--	---

**Flood Control Project Maintenance  
Levee Inspections**

**Maintenance Issue Types Only, Levee Inspection Report By Mile - Fall 2017**

**Butte County Department of Public Works**

Waterway	Bank	Unit Miles	Inspection Start/End	Inspector
Unit No. 02 Mud Creek	Left	7.96	10/11/2017 10/11/2017	Bob Duffey

LM Start	0.23	Rating **	M	Issue No.	41 (cont)	
LM End	0.23	Issue Type +	Ma	Location *		
Category	Supplemental			GPS Latitude/Longitude		
				Start	End	
Item	DWR UCIP LMA Responsibility			39.797416 °	39.797416 °	
				-121.881675 °	-121.881675 °	
DWR ID						
Comment Code						
Inspector Comment						
FS_ID:31667 DS_ID:19234 EP_NO: N/A Repair Type: Non-Urgent Crossing Status: Found UCIP Comments: Needs cleaning and clearing the culvert. FIELD_STRUCT_DESC: 24-inch CM pipe through the levee, 6.6 feet below the crown. Flap gate on the waterward end. Concrete "U" headwalls on both ends. Grouted riprap spillway on the waterward end. O&M Manual Sac 504, May 1965. FS Date: 3/11/2014						

Photo 3 of 3 : UCIP\_FA\_2017\_31667\_57966.jpg



LS view: U type concrete headwall and CMP on levee slope. Vegetation debris on inlet box.

LM Start	0.31	Rating **	M	Issue No.	29
LM End	0.31	Issue Type +	Ma	Location *	LS
Category	Earthen Levee			GPS Latitude/Longitude	
				Start	End
Item	Slope Stability			39.797071 °	39.797071 °
				-121.883049 °	-121.883049 °
DWR ID	DWR_NA0003_02_f_2016_29				
Comment Code					
S3 : Repair the levee slope damaged by vehicle traffic and prevent access where possible.					
Inspector Comment					

Photo 1 of 1 : FA\_2017\_NA0003\_65\_29\_20170911\_00008.jpg



View of the slope instability caused by vehicles along the landside slope.

<b>* Location</b> LS : Land Side    N/A : Not Applicable WS : Water Side CR : Crown	<b>** Rating</b> A : Acceptable M : Minimally Acceptable U : Unacceptable	N : Not Inspected/Rated C : Corrected A/W : Acceptable but Monitor & Maintain	<b>+ Issue Type</b> Ma : Maintenance Deficiency Ob : Design & System Obsolescence En : Enforcement
--	--	---	---

**Flood Control Project Maintenance  
Levee Inspections**

**Maintenance Issue Types Only, Levee Inspection Report By Mile - Fall 2017**

**Butte County Department of Public Works**

Waterway	Bank	Unit Miles	Inspection Start/End	Inspector
Unit No. 02 Mud Creek	Left	7.96	10/11/2017 10/11/2017	Bob Duffey

LM Start	1.26	Rating **	M	Issue No.	42
LM End	1.26	Issue Type +	Ma	Location *	
Category	Supplemental			GPS Latitude/Longitude	
				Start	End
Item	DWR UCIP LMA Responsibility			39.784062 °	39.784062 °
				-121.884344 °	-121.884344 °
DWR ID					
Comment Code					
Inspector Comment					
FS_ID:30403 DS_ID:19235 EP_NO: N/A Repair Type: Non-Urgent Crossing Status: Found UCIP Comments: Needs cleaning and clearing of debris. FIELD_STRUCT_DESC: 24-inch CM pipe through levee, 12.5 below the crown. Flap gate on the waterward end. Concrete "U" headwalls on both ends. Grouted riprap apron on the landward end. Grouted riprap spillway on the waterward end. O&M Manual Sac 504, May 1965. FS Date: 2/24/2014					

LM Start	<b>1.26</b>	Rating **	M	Issue No.	<b>42 (cont)</b>
LM End	<b>1.26</b>	Issue Type +	Ma	Location *	

Photo 1 of 3 : UCIP\_FA\_2017\_30403\_55922.jpg



WS view: U type concrete headwall, pipe, and flapgate on levee slope.

Photo 2 of 3 : UCIP\_FA\_2017\_30403\_55921.jpg



LS view: U type concrete headwall and CMP on levee slope. Vegetation debris in inlet pipe.

<b>* Location</b> LS : Land Side    N/A : Not Applicable WS : Water Side CR : Crown		<b>** Rating</b> A : Acceptable M : Minimally Acceptable U : Unacceptable N : Not Inspected/Rated C : Corrected A/W : Acceptable but Monitor & Maintain		<b>+ Issue Type</b> Ma : Maintenance Deficiency Ob : Design & System Obsolescence En : Enforcement
--	--	---	--	---



**Flood Control Project Maintenance  
Levee Inspections**

**Maintenance Issue Types Only, Levee Inspection Report By Mile - Fall 2017**

**Butte County Department of Public Works**

Waterway	Bank	Unit Miles	Inspection Start/End	Inspector
Unit No. 02 Mud Creek	Left	7.96	10/11/2017 10/11/2017	Bob Duffey

LM Start	1.26	Rating **	M	Issue No.	42 (cont)	
LM End	1.26	Issue Type +	Ma	Location *		
Category	Supplemental			GPS Latitude/Longitude		
				Start	End	
Item	DWR UCIP LMA Responsibility			39.784062 °	39.784062 °	
				-121.884344 °	-121.884344 °	
DWR ID						
Comment Code						
Inspector Comment						
FS_ID:30403 DS_ID:19235 EP_NO: N/A Repair Type: Non-Urgent Crossing Status: Found UCIP Comments: Needs cleaning and clearing of debris. FIELD_STRUCT_DESC: 24-inch CM pipe through levee, 12.5 below the crown. Flap gate on the waterward end. Concrete "U" headwalls on both ends. Grouted riprap apron on the landward end. Grouted riprap spillway on the waterward end. O&M Manual Sac 504, May 1965. FS Date: 2/24/2014						

Photo 3 of 3 : UCIP\_FA\_2017\_30403\_55920.jpg



LS view: inside view of CMP on levee slope. Needs cleaning and clearing.

LM Start	1.45	Rating **	M	Issue No.	30
LM End	1.45	Issue Type +	Ma	Location *	LS
Category	Earthen Levee			GPS Latitude/Longitude	
				Start	End
Item	Vegetation			39.783084 °	39.783084 °
				-121.887625 °	-121.887625 °
DWR ID	DWR_NA0003_02_f_2016_30				
Comment Code					
V4 : Elderberries are blocking visibility and flood fight capability.					
Inspector Comment					
Blackberry bramble					

Photo 1 of 1 : FA\_2017\_NA0003\_65\_30\_20170911\_00009.jpg



View of the blackberries blocking visibility and access.

<b>* Location</b> LS : Land Side    N/A : Not Applicable WS : Water Side CR : Crown	<b>** Rating</b> A : Acceptable M : Minimally Acceptable U : Unacceptable	N : Not Inspected/Rated C : Corrected A/W : Acceptable but Monitor & Maintain	<b>+ Issue Type</b> Ma : Maintenance Deficiency Ob : Design & System Obsolescence En : Enforcement
--	--	---	---



**Flood Control Project Maintenance  
Levee Inspections**

## Maintenance Issue Types Only, Levee Inspection Report By Mile - Fall 2017

### Butte County Department of Public Works

Waterway	Bank	Unit Miles	Inspection Start/End	Inspector
Unit No. 02 Mud Creek	Left	7.96	10/11/2017 10/11/2017	Bob Duffey

LM Start	1.46	Rating **	M	Issue No.	43
LM End	1.46	Issue Type +	Ma	Location *	
Category	Supplemental			GPS Latitude/Longitude	
				Start	End
Item	DWR UCIP LMA Responsibility			39.782980 °	39.782980 °
				-121.887834 °	-121.887834 °
DWR ID					
Comment Code					
Inspector Comment					
FS_ID:30743					
DS_ID:19237					
EP_NO: N/A					
Repair Type: Non-Urgent					
Crossing Status: Found					
UCIP Comments: Needs cleaning and clearing of debris.					
FIELD_STRUCT_DESC: 24-inch CM pipe through the levee, 11.0 feet below the crown. Flap gate on the waterward end. Concrete "U" headwalls on both ends. Grouted riprap apron on the landward end. Grouted riprap spillway on the waterward end. O&M Manual Sac 504, May 1965.					
FS Date: 2/24/2014					

LM Start	<b>1.46</b>	Rating **	M	Issue No.	<b>43 (cont)</b>
LM End	<b>1.46</b>	Issue Type +	Ma	Location *	

Photo 1 of 2 : UCIP\_FA\_2017\_30743\_56641.jpg



WS view: U type concrete headwall, pipe, and flapgate on levee slope. Debris in outlet box.

Photo 2 of 2 : UCIP\_FA\_2017\_30743\_56640.jpg



LS view: U type concrete headwall and CMP on levee slope. Vegetation debris and soil in inlet area.

<b>* Location</b> LS : Land Side    N/A : Not Applicable WS : Water Side CR : Crown		<b>** Rating</b> A : Acceptable M : Minimally Acceptable U : Unacceptable		N : Not Inspected/Rated C : Corrected A/W : Acceptable but Monitor & Maintain		<b>+ Issue Type</b> Ma : Maintenance Deficiency Ob : Design & System Obsolescence En : Enforcement	
--	--	--	--	---	--	---	--



**Flood Control Project Maintenance  
Levee Inspections**

## Maintenance Issue Types Only, Levee Inspection Report By Mile - Fall 2017

### Butte County Department of Public Works

Waterway	Bank	Unit Miles	Inspection Start/End	Inspector
Unit No. 02 Mud Creek	Left	7.96	10/11/2017 10/11/2017	Bob Duffey

LM Start	2.34	Rating **	M	Issue No.	46	
LM End	2.34	Issue Type +	Ma	Location *		
Category	Supplemental			GPS Latitude/Longitude		
				Start	End	
Item	DWR UCIP LMA Responsibility			39.772185 °	39.772185 °	
				-121.895681 °	-121.895681 °	
DWR ID						
Comment Code						
Inspector Comment						
FS_ID:30763						
DS_ID:19239						
EP_NO: N/A						
Repair Type: Non-Urgent						
Crossing Status: Found						
UCIP Comments: Debris in landside inlet area. Needs cleaning and clearing of debris.						
FIELD_STRUCT_DESC: 24-inch CM pipe through the levee, 10.0 feet below the crown. Flap gate on the waterward end. Concrete "U" headwalls on both ends. Grouted riprap apron on the landward end. Grouted riprap spillway on the waterward end. O&M Manual Sac 504, May 1965.						
FS Date: 2/24/2014						

LM Start	<b>2.34</b>	Rating **	M	Issue No.	<b>46 (cont)</b>
LM End	<b>2.34</b>	Issue Type +	Ma	Location *	

Photo 1 of 3 : UCIP\_FA\_2017\_30763\_56662.jpg



WS view: U type concrete headwall, pipe, and flapgate on levee slope. Vegetation debris blocking outlet.

Photo 2 of 3 : UCIP\_FA\_2017\_30763\_56661.jpg



LS view: U type concrete headwall and CMP on levee slope.

<b>* Location</b> LS : Land Side    N/A : Not Applicable WS : Water Side CR : Crown		<b>** Rating</b> A : Acceptable M : Minimally Acceptable U : Unacceptable		N : Not Inspected/Rated C : Corrected A/W : Acceptable but Monitor & Maintain		<b>+ Issue Type</b> Ma : Maintenance Deficiency Ob : Design & System Obsolescence En : Enforcement	
--	--	--	--	---	--	---	--

**Flood Control Project Maintenance  
Levee Inspections**

## Maintenance Issue Types Only, Levee Inspection Report By Mile - Fall 2017

### Butte County Department of Public Works

Waterway	Bank	Unit Miles	Inspection Start/End	Inspector
Unit No. 02 Mud Creek	Left	7.96	10/11/2017 10/11/2017	Bob Duffey

LM Start	2.34	Rating **	M	Issue No.	46 (cont)	
LM End	2.34	Issue Type +	Ma	Location *		
Category	Supplemental			GPS Latitude/Longitude		
				Start	End	
Item	DWR UCIP LMA Responsibility			39.772185 °	39.772185 °	
				-121.895681 °	-121.895681 °	
DWR ID						
Comment Code						
Inspector Comment						
FS_ID:30763 DS_ID:19239 EP_NO: N/A Repair Type: Non-Urgent Crossing Status: Found UCIP Comments: Debris in landside inlet area. Needs cleaning and clearing of debris. FIELD_STRUCT_DESC: 24-inch CM pipe through the levee, 10.0 feet below the crown. Flap gate on the waterward end. Concrete "U" headwalls on both ends. Grouted riprap apron on the landward end. Grouted riprap spillway on the waterward end. O&M Manual Sac 504, May 1965. FS Date: 2/24/2014						

Photo 3 of 3 : UCIP\_FA\_2017\_30763\_56660.jpg



LS view: inside view of CMP on levee slope. Needs cleaning and clearing.

LM Start	2.74	Rating **	M	Issue No.	47
LM End	2.74	Issue Type +	Ma	Location *	
Category	Supplemental			GPS Latitude/Longitude	
				Start	End
Item	DWR UCIP LMA Responsibility			39.768741 °	39.768741 °
				-121.901176 °	-121.901176 °
DWR ID					
Comment Code					
Inspector Comment					
FS_ID:30783 DS_ID:19240 EP_NO: N/A Repair Type: Non-Urgent Crossing Status: Found UCIP Comments: Needs cleaning and clearing of debris. FIELD_STRUCT_DESC: 24-inch CM pipe through the levee, 10.0 feet below the crown. Flap gate on the waterward end. Concrete "U" headwalls on both ends. Grouted riprap apron on the landward end. Grouted riprap spillway on the waterward end. O&M Manual Sac 504, May 1965. FS Date: 2/24/2014					

Photo 1 of 3 : UCIP\_FA\_2017\_30783\_56682.jpg



WS view: U type concrete headwall, pipe, and flapgate on levee slope. Gate not fully closed. Debris and soil in outlet box.

<b>* Location</b> LS : Land Side    N/A : Not Applicable WS : Water Side CR : Crown		<b>** Rating</b> A : Acceptable                      N : Not Inspected/Rated M : Minimally Acceptable        C : Corrected U : Unacceptable                  A/W : Acceptable but Monitor & Maintain		<b>+ Issue Type</b> Ma : Maintenance Deficiency Ob : Design & System Obsolescence En : Enforcement
--	--	---	--	---



**Flood Control Project Maintenance  
Levee Inspections**

**Maintenance Issue Types Only, Levee Inspection Report By Mile - Fall 2017**

**Butte County Department of Public Works**

Waterway	Bank	Unit Miles	Inspection Start/End	Inspector
Unit No. 02 Mud Creek	Left	7.96	10/11/2017 10/11/2017	Bob Duffey

LM Start	2.74	Rating **	M	Issue No.	47 (cont)	
LM End	2.74	Issue Type +	Ma	Location *		
Category	Supplemental			GPS Latitude/Longitude		
				Start	End	
Item	DWR UCIP LMA Responsibility			39.768741 °	39.768741 °	
				-121.901176 °	-121.901176 °	
DWR ID						
Comment Code						
Inspector Comment						
FS_ID:30783						
DS_ID:19240						
EP_NO: N/A						
Repair Type: Non-Urgent						
Crossing Status: Found						
UCIP Comments: Needs cleaning and clearing of debris.						
FIELD_STRUCT_DESC: 24-inch CM pipe through the levee, 10.0 feet below the crown. Flap gate on the waterward end. Concrete "U" headwalls on both ends. Grouted riprap apron on the landward end. Grouted riprap spillway on the waterward end. O&M Manual Sac 504, May 1965.						
FS Date: 2/24/2014						

LM Start	<b>2.74</b>	Rating **	M	Issue No.	<b>47 (cont)</b>
LM End	<b>2.74</b>	Issue Type +	Ma	Location *	

Photo 2 of 3 : UCIP\_FA\_2017\_30783\_56681.jpg



LS view: U type concrete headwall and CMP on levee slope. Debris and soil in inlet box.

Photo 3 of 3 : UCIP\_FA\_2017\_30783\_56680.jpg



LS view: inside view of CMP on levee slope. Needs cleaning and clearing.

<b>* Location</b> LS : Land Side    N/A : Not Applicable WS : Water Side CR : Crown	<b>** Rating</b> A : Acceptable M : Minimally Acceptable U : Unacceptable	N : Not Inspected/Rated C : Corrected A/W : Acceptable but Monitor & Maintain	<b>+ Issue Type</b> Ma : Maintenance Deficiency Ob : Design & System Obsolescence En : Enforcement
--	--	---	---

**Flood Control Project Maintenance  
Levee Inspections**

**Maintenance Issue Types Only, Levee Inspection Report By Mile - Fall 2017**

**Butte County Department of Public Works**

Waterway	Bank	Unit Miles	Inspection Start/End	Inspector
Unit No. 02 Mud Creek	Left	7.96	10/11/2017 10/11/2017	Bob Duffey

LM Start	3.50	Rating **	M	Issue No.	48
LM End	3.50	Issue Type +	Ma	Location *	
Category	Supplemental			GPS Latitude/Longitude	
				Start	End
Item	DWR UCIP LMA Responsibility			39.760847 °	39.760847 °
				-121.910265 °	-121.910265 °
DWR ID					
Comment Code					
Inspector Comment					
FS_ID:30803					
DS_ID:19241					
EP_NO: N/A					
Repair Type: Non-Urgent					
Crossing Status: Found					
UCIP Comments: Needs cleaning and clearing of debris.					
FIELD_STRUCT_DESC: 24-inch CM pipe through the levee, 6.5 feet below the crown. Flap gate on the waterward end. Concrete "U" headwalls on both ends. Grouted riprap apron on the landward end. Grouted riprap spillway on the waterward end. O&M Manual Sac 504, May 1965.					
FS Date: 2/24/2014					

Photo 1 of 3 : UCIP\_FA\_2017\_30803\_56685.jpg



WS view: U type concrete headwall, pipe, and flapgate on levee slope. Vegetation debris and soil blocking outlet.

LM Start	<b>3.50</b>	Rating **	M	Issue No.	<b>48 (cont)</b>
LM End	<b>3.50</b>	Issue Type +	Ma	Location *	

Photo 2 of 3 : UCIP\_FA\_2017\_30803\_56684.jpg



LS view: U type concrete headwall and CMP on levee slope. Vegetation debris and soil blocking inlet.

<b>* Location</b> LS : Land Side    N/A : Not Applicable WS : Water Side CR : Crown		<b>** Rating</b> A : Acceptable M : Minimally Acceptable U : Unacceptable		N : Not Inspected/Rated C : Corrected A/W : Acceptable but Monitor & Maintain		<b>+ Issue Type</b> Ma : Maintenance Deficiency Ob : Design & System Obsolescence En : Enforcement	
--	--	--	--	---	--	---	--

**Flood Control Project Maintenance  
Levee Inspections**

**Maintenance Issue Types Only, Levee Inspection Report By Mile - Fall 2017**

**Butte County Department of Public Works**

Waterway	Bank	Unit Miles	Inspection Start/End	Inspector
Unit No. 02 Mud Creek	Left	7.96	10/11/2017 10/11/2017	Bob Duffey

LM Start	3.50	Rating **	M	Issue No.	48 (cont)	
LM End	3.50	Issue Type +	Ma	Location *		
Category	Supplemental			GPS Latitude/Longitude		
				Start		End
Item	DWR UCIP LMA Responsibility			39.760847 °		39.760847 °
				-121.910265 °		-121.910265 °
DWR ID						
Comment Code						
Inspector Comment						
FS_ID:30803						
DS_ID:19241						
EP_NO: N/A						
Repair Type: Non-Urgent						
Crossing Status: Found						
UCIP Comments: Needs cleaning and clearing of debris.						
FIELD_STRUCT_DESC: 24-inch CM pipe through the levee, 6.5 feet below the crown. Flap gate on the waterward end. Concrete "U" headwalls on both ends. Grouted riprap apron on the landward end. Grouted riprap spillway on the waterward end. O&M Manual Sac 504, May 1965.						
FS Date: 2/24/2014						

Photo 3 of 3 : UCIP\_FA\_2017\_30803\_56683.jpg



LS view: inside view of CMP on levee slope. Needs cleaning and clearing.

LM Start	3.52	Rating **	M	Issue No.	10
LM End	3.52	Issue Type +	Ma	Location *	LS
Category	Earthen Levee			GPS Latitude/Longitude	
				Start	End
Item	Slope Stability			39.760582 °	39.760582 °
				-121.910303 °	-121.910303 °
DWR ID	DWR_NA0003_02_f_2015_10				
Comment Code					
S3 : Repair the levee slope damaged by vehicle traffic and prevent access where possible.					
Inspector Comment					

Photo 1 of 1 : FA\_2017\_NA0003\_65\_10\_20170911\_00007.jpg



View of the vehicle erosion along the landside slope.

<b>* Location</b> LS : Land Side    N/A : Not Applicable WS : Water Side CR : Crown	<b>** Rating</b> A : Acceptable M : Minimally Acceptable U : Unacceptable	N : Not Inspected/Rated C : Corrected A/W : Acceptable but Monitor & Maintain	<b>+ Issue Type</b> Ma : Maintenance Deficiency Ob : Design & System Obsolescence En : Enforcement
--	--	---	---



**Flood Control Project Maintenance  
Levee Inspections**

**Maintenance Issue Types Only, Levee Inspection Report By Mile - Fall 2017**

**Butte County Department of Public Works**

Waterway	Bank	Unit Miles	Inspection Start/End	Inspector
Unit No. 02 Mud Creek	Left	7.96	10/11/2017 10/11/2017	Bob Duffey

LM Start	4.42	Rating **	C	Issue No.	11
LM End	4.42	Issue Type +	Ma	Location *	LS
Category	Earthen Levee			GPS Latitude/Longitude	
				Start	End
Item	Animal Control			39.751120 °	39.751120 °
				-121.915977 °	-121.915977 °
DWR ID	DWR_NA0003_02_f_2015_11				
Comment Code					
A3 : No rodents visible, but rodent burrows visible; need to backfill and compact or grout burrows.					
Inspector Comment					
The rodent holes was repaired along the landside slope.					

No Photos

LM Start	4.55	Rating **	A/W	Issue No.	8
LM End	4.55	Issue Type +	Ma	Location *	LS
Category	Earthen Levee			GPS Latitude/Longitude	
				Start	End
Item	Animal Control			39.749639 °	39.749639 °
				-121.917188 °	-121.917188 °
DWR ID	DWR_NA0003_02_f_2013_8				
Comment Code					
A1 : Exterminate rodents and backfill and compact or grout burrows.					
Inspector Comment					
Butte County has been grouting the rodent holes.					

Photo 1 of 2 : FA\_2017\_NA0003\_65\_8\_20170911\_00005.jpg



View of the bait station placed by the rodent hole.

LM Start	<b>4.55</b>	Rating **	A/W	Issue No.	<b>8 (cont)</b>
LM End	<b>4.55</b>	Issue Type +	Ma	Location *	LS

Photo 2 of 2 : FA\_2017\_NA0003\_65\_8\_20170911\_00006.jpg



View of the bait station by the rodent holes.

<b>* Location</b> LS : Land Side    N/A : Not Applicable WS : Water Side CR : Crown		<b>** Rating</b> A : Acceptable M : Minimally Acceptable U : Unacceptable N : Not Inspected/Rated C : Corrected A/W : Acceptable but Monitor & Maintain		<b>+ Issue Type</b> Ma : Maintenance Deficiency Ob : Design & System Obsolescence En : Enforcement
--	--	---	--	---



**Flood Control Project Maintenance  
Levee Inspections**

**Maintenance Issue Types Only, Levee Inspection Report By Mile - Fall 2017**

**Butte County Department of Public Works**

Waterway	Bank	Unit Miles	Inspection Start/End	Inspector
Unit No. 02 Mud Creek	Left	7.96	10/11/2017 10/11/2017	Bob Duffey

LM Start	4.61	Rating **	M	Issue No.	49
LM End	4.61	Issue Type +	Ma	Location *	
Category	Supplemental			GPS Latitude/Longitude	
				Start	End
Item	DWR UCIP LMA Responsibility			39.748731 °	39.748731 °
				-121.917577 °	-121.917577 °
DWR ID					
Comment Code					
Inspector Comment					
FS_ID:31028					
DS_ID:19245					
EP_NO: N/A					
Repair Type: Non-Urgent					
Crossing Status: Found					
UCIP Comments: Needs cleaning and clearing of debris.					
FIELD_STRUCT_DESC: 24-inch CM pipe through the levee, 10.0 feet below the crown. Flap gate on the waterward end. Concrete "U" headwalls on both ends. Grouted riprap apron on the landward end. Grouted riprap spillway on the waterward end. O&M Manual Sac 504, May 1965.					
FS Date: 2/25/2014					

Photo 1 of 3 : UCIP\_FA\_2017\_31028\_56913.jpg



WS view: U type concrete headwall, pipe, and flapgate on levee slope. Soil/mud on outlet box.

LM Start	<b>4.61</b>	Rating **	M	Issue No.	<b>49 (cont)</b>
LM End	<b>4.61</b>	Issue Type +	Ma	Location *	

Photo 2 of 3 : UCIP\_FA\_2017\_31028\_56912.jpg



LS view: U type concrete headwall and CMP on levee slope.

<b>* Location</b> LS : Land Side    N/A : Not Applicable WS : Water Side CR : Crown		<b>** Rating</b> A : Acceptable M : Minimally Acceptable U : Unacceptable		N : Not Inspected/Rated C : Corrected A/W : Acceptable but Monitor & Maintain		<b>+ Issue Type</b> Ma : Maintenance Deficiency Ob : Design & System Obsolescence En : Enforcement	
--	--	--	--	---	--	---	--



**Flood Control Project Maintenance  
Levee Inspections**

**Maintenance Issue Types Only, Levee Inspection Report By Mile - Fall 2017**

**Butte County Department of Public Works**

Waterway	Bank	Unit Miles	Inspection Start/End	Inspector
Unit No. 02 Mud Creek	Left	7.96	10/11/2017 10/11/2017	Bob Duffey

LM Start	5.64	Rating **	M	Issue No.	50 (cont)	
LM End	5.64	Issue Type +	Ma	Location *		
Category	Supplemental			GPS Latitude/Longitude		
				Start	End	
Item	DWR UCIP LMA Responsibility			39.738898 °	39.738898 °	
				-121.930242 °	-121.930242 °	
DWR ID						
Comment Code						
Inspector Comment						
FS_ID:31031						
DS_ID:19247						
EP_NO: N/A						
Repair Type: Non-Urgent						
Crossing Status: Found						
UCIP Comments: Needs cleaning and clearing of debris.						
FIELD_STRUCT_DESC: 24-inch CM pipe through the levee, 11.5 feet below the crown. Flap gate on the waterward end. Concrete "U" headwalls on both ends. Grouted riprap apron on the landward end. Grouted riprap spillway on the waterward end. O&M Manual Sac 504, May 1965.						
FS Date: 2/25/2014						

LM Start	<b>5.64</b>	Rating **	M	Issue No.	<b>50 (cont)</b>
LM End	<b>5.64</b>	Issue Type +	Ma	Location *	

Photo 2 of 3 : UCIP\_FA\_2017\_31031\_56916.jpg



LS view: U type concrete headwall and CMP on levee slope. Soil/mud on inlet box.

Photo 3 of 3 : UCIP\_FA\_2017\_31031\_56915.jpg



LS view: inside view of CMP on levee slope. Needs cleaning and clearing.

<b>* Location</b> LS : Land Side    N/A : Not Applicable WS : Water Side CR : Crown	<b>** Rating</b> A : Acceptable M : Minimally Acceptable U : Unacceptable	N : Not Inspected/Rated C : Corrected A/W : Acceptable but Monitor & Maintain	<b>+ Issue Type</b> Ma : Maintenance Deficiency Ob : Design & System Obsolescence En : Enforcement
--	--	---	---



**Flood Control Project Maintenance  
Levee Inspections**

## Maintenance Issue Types Only, Levee Inspection Report By Mile - Fall 2017

### Butte County Department of Public Works

Waterway	Bank	Unit Miles	Inspection Start/End	Inspector
Unit No. 02 Mud Creek	Left	7.96	10/11/2017 10/11/2017	Bob Duffey

LM Start	5.87	Rating **	A	Issue No.	28	
LM End	5.87	Issue Type +	Ma	Location *	LS	
Category	Earthen Levee			GPS Latitude/Longitude		
				Start		End
Item	Vegetation			39.736258 °		39.736258 °
				-121.931938 °		-121.931938 °
DWR ID	DWR_NA0003_02_f_2017_28					
Comment Code						
V1 : Control annual grass and weeds on the levee slopes and easements.						
Inspector Comment						
There is no vegetation on both slopes.						

Photo 1 of 1 : FA\_2017\_NA0003\_65\_28\_20171019\_00120.jpg



View of no vegetation on both slopes.

LM Start	6.09	Rating **	M	Issue No.	51
LM End	6.09	Issue Type +	Ma	Location *	
Category	Supplemental			GPS Latitude/Longitude	
				Start	End
Item	DWR UCIP LMA Responsibility			39.733297 °	39.733297 °
				-121.930411 °	-121.930411 °
DWR ID					
Comment Code					
Inspector Comment					
FS_ID:41376 DS_ID:19248 EP_NO: N/A Repair Type: Non-Urgent Crossing Status: Found UCIP Comments: Needs cleaning and clearing of debris. FIELD_STRUCT_DESC: 1 of 2: Two 42-inch CM pipes through the levee, 16.0 feet below the crown. Flap gates on the waterward end. Slide gates in CM pipe riser on the waterward slope. Concrete "U" headwalls on both ends. Grouted riprap apron and rock revetment on the landward end. Channel Slough drainage structure. O&M Manual Sac 504, May 1965. FS Date: 2/25/2014					

Photo 1 of 3 : UCIP\_FA\_2017\_41376\_56920.jpg



WS view: slide gates in CMP risers on levee slope.

<b>* Location</b> LS : Land Side    N/A : Not Applicable WS : Water Side CR : Crown		<b>** Rating</b> A : Acceptable                      N : Not Inspected/Rated M : Minimally Acceptable        C : Corrected U : Unacceptable                  A/W : Acceptable but Monitor & Maintain		<b>+ Issue Type</b> Ma : Maintenance Deficiency Ob : Design & System Obsolescence En : Enforcement
--	--	---	--	---



**Flood Control Project Maintenance  
Levee Inspections**

**Maintenance Issue Types Only, Levee Inspection Report By Mile - Fall 2017**

**Butte County Department of Public Works**

Waterway	Bank	Unit Miles	Inspection Start/End	Inspector
Unit No. 02 Mud Creek	Left	7.96	10/11/2017 10/11/2017	Bob Duffey

LM Start	6.09	Rating **	M	Issue No.	51 (cont)
LM End	6.09	Issue Type +	Ma	Location *	
Category	Supplemental			GPS Latitude/Longitude	
				Start	End
Item	DWR UCIP LMA Responsibility			39.733297 °	39.733297 °
				-121.930411 °	-121.930411 °
DWR ID					
Comment Code					
Inspector Comment					
FS_ID:41376 DS_ID:19248 EP_NO: N/A Repair Type: Non-Urgent Crossing Status: Found UCIP Comments: Needs cleaning and clearing of debris. FIELD_STRUCT_DESC: 1 of 2: Two 42-inch CM pipes through the levee, 16.0 feet below the crown. Flap gates on the waterward end. Slide gates in CM pipe riser on the waterward slope. Concrete "U" headwalls on both ends. Grouted riprap apron and rock revetment on the landward end. Channel Slough drainage structure. O&M Manual Sac 504, May 1965. FS Date: 2/25/2014					

LM Start	<b>6.09</b>	Rating **	M	Issue No.	<b>51 (cont)</b>
LM End	<b>6.09</b>	Issue Type +	Ma	Location *	

Photo 2 of 3 : UCIP\_FA\_2017\_41376\_56919.jpg



WS view: U type concrete headwall, pipes, and flapgates on levee slope. Vegetation debris on outlet box.

Photo 3 of 3 : UCIP\_FA\_2017\_41376\_56918.jpg



LS view: U type concrete headwall and CMPs on levee slope. Soil/mud on inlet box.

<b>* Location</b> LS : Land Side    N/A : Not Applicable WS : Water Side CR : Crown		<b>** Rating</b> A : Acceptable M : Minimally Acceptable U : Unacceptable		N : Not Inspected/Rated C : Corrected A/W : Acceptable but Monitor & Maintain		<b>+ Issue Type</b> Ma : Maintenance Deficiency Ob : Design & System Obsolescence En : Enforcement	
--	--	--	--	---	--	---	--



**Flood Control Project Maintenance  
Levee Inspections**

**Maintenance Issue Types Only, Levee Inspection Report By Mile - Fall 2017**

**Butte County Department of Public Works**

Waterway	Bank	Unit Miles	Inspection Start/End	Inspector
Unit No. 02 Mud Creek	Left	7.96	10/11/2017 10/11/2017	Bob Duffey

LM Start	6.09	Rating **	M	Issue No.	52 (cont)
LM End	6.09	Issue Type +	Ma	Location *	
Category	Supplemental			GPS Latitude/Longitude	
				Start	End
Item	DWR UCIP LMA Responsibility			39.733280 °	39.733280 °
				-121.930409 °	-121.930409 °
DWR ID					
Comment Code					
Inspector Comment					
FS_ID:41377 DS_ID:19259 EP_NO: N/A Repair Type: Non-Urgent Crossing Status: Found UCIP Comments: Needs cleaning and clearing of debris. FIELD_STRUCT_DESC: 2 of 2: Two 42-inch CM pipes through the levee, 16.0 feet below the crown. Flap gates on the waterward end. Slide gates in CM pipe riser on the waterward slope. Concrete "U" headwalls on both ends. Grouted riprap apron and rock revetment on the landward end. Channel Slough drainage structure. O&M Manual Sac 504, May 1965. FS Date: 2/25/2014					

Photo 3 of 3 : UCIP\_FA\_2017\_41377\_56921.jpg



LS view: U type concrete headwall and CMPs on levee slope. Soil/mud on inlet box.

LM Start	6.15	Rating **	M	Issue No.	53
LM End	6.15	Issue Type +	Ma	Location *	
Category	Supplemental			GPS Latitude/Longitude	
				Start	End
Item	DWR UCIP LMA Responsibility			39.732515 °	39.732515 °
				-121.930373 °	-121.930373 °
DWR ID					
Comment Code					
Inspector Comment					
FS_ID:31034 DS_ID:19249 EP_NO: N/A Repair Type: Non-Urgent Crossing Status: Found UCIP Comments: Needs cleaning and clearing of debris. FIELD_STRUCT_DESC: 24-inch CM pipe through the levee, 12.0 feet below the crown. Flap gate on the waterward end. Concrete "U" headwalls on both ends. Grouted riprap apron on the landward end. Grouted riprap spillway on the waterward end. O&M Manual Sac 504, May 1965. FS Date: 2/25/2014					

Photo 1 of 3 : UCIP\_FA\_2017\_31034\_56926.jpg



WS view: U type concrete headwall, pipe, and flapgate on levee slope.

<b>* Location</b> LS : Land Side    N/A : Not Applicable WS : Water Side CR : Crown		<b>** Rating</b> A : Acceptable                      N : Not Inspected/Rated M : Minimally Acceptable        C : Corrected U : Unacceptable                  A/W : Acceptable but Monitor & Maintain		<b>+ Issue Type</b> Ma : Maintenance Deficiency Ob : Design & System Obsolescence En : Enforcement
--	--	---	--	---



**Flood Control Project Maintenance  
Levee Inspections**

**Maintenance Issue Types Only, Levee Inspection Report By Mile - Fall 2017**

**Butte County Department of Public Works**

Waterway	Bank	Unit Miles	Inspection Start/End	Inspector
Unit No. 02 Mud Creek	Left	7.96	10/11/2017 10/11/2017	Bob Duffey

LM Start	6.15	Rating **	M	Issue No.	53 (cont)
LM End	6.15	Issue Type +	Ma	Location *	
Category	Supplemental			GPS Latitude/Longitude	
				Start	End
Item	DWR UCIP LMA Responsibility			39.732515 °	39.732515 °
				-121.930373 °	-121.930373 °
DWR ID					
Comment Code					
Inspector Comment					
FS_ID:31034 DS_ID:19249 EP_NO: N/A Repair Type: Non-Urgent Crossing Status: Found UCIP Comments: Needs cleaning and clearing of debris. FIELD_STRUCT_DESC: 24-inch CM pipe through the levee, 12.0 feet below the crown. Flap gate on the waterward end. Concrete "U" headwalls on both ends. Grouted riprap apron on the landward end. Grouted riprap spillway on the waterward end. O&M Manual Sac 504, May 1965. FS Date: 2/25/2014					

LM Start	<b>6.15</b>	Rating **	M	Issue No.	<b>53 (cont)</b>
LM End	<b>6.15</b>	Issue Type +	Ma	Location *	

Photo 2 of 3 : UCIP\_FA\_2017\_31034\_56925.jpg



LS view: U type concrete headwall and CMP on levee slope.

Photo 3 of 3 : UCIP\_FA\_2017\_31034\_56924.jpg



LS view: inside view of CMP on levee slope. Needs cleaning and clearing.

<b>* Location</b> LS : Land Side    N/A : Not Applicable WS : Water Side CR : Crown		<b>** Rating</b> A : Acceptable M : Minimally Acceptable U : Unacceptable N : Not Inspected/Rated C : Corrected A/W : Acceptable but Monitor & Maintain		<b>+ Issue Type</b> Ma : Maintenance Deficiency Ob : Design & System Obsolescence En : Enforcement
--	--	---	--	---



**Flood Control Project Maintenance  
Levee Inspections**

**Maintenance Issue Types Only, Levee Inspection Report By Mile - Fall 2017**

**Butte County Department of Public Works**

Waterway	Bank	Unit Miles	Inspection Start/End	Inspector
Unit No. 02 Mud Creek	Left	7.96	10/11/2017 10/11/2017	Bob Duffey

LM Start	6.43	Rating **	M	Issue No.	54
LM End	6.43	Issue Type +	Ma	Location *	
Category	Supplemental			GPS Latitude/Longitude	
				Start	End
Item	DWR UCIP LMA Responsibility			39.728812 °	39.728812 °
				-121.932623 °	-121.932623 °
DWR ID					
Comment Code					
Inspector Comment					
FS_ID:31085					
DS_ID:19251					
EP_NO: N/A					
Repair Type: Non-Urgent					
Crossing Status: Found					
UCIP Comments: Needs cleaning and clearing of debris.					
FIELD_STRUCT_DESC: 24-inch CM pipe through the levee, 15.5 feet below the crown. Flap gate on the waterward end. Concrete "U" headwalls on both ends. Grouted riprap apron on the landward end. Grouted riprap spillway on the waterward end. O&M Manual Sac 504, May 1965.					
FS Date: 2/25/2014					

LM Start	<b>6.43</b>	Rating **	M	Issue No.	<b>54 (cont)</b>
LM End	<b>6.43</b>	Issue Type +	Ma	Location *	

Photo 1 of 3 : UCIP\_FA\_2017\_31085\_56988.jpg



WS view: U type concrete headwall, pipe, and flapgate on levee slope.  
Soil/mud on outlet box.

Photo 2 of 3 : UCIP\_FA\_2017\_31085\_56987.jpg



LS view: U type concrete headwall and CMP on levee slope. Soil/mud on inlet box.

<b>* Location</b> LS : Land Side    N/A : Not Applicable WS : Water Side CR : Crown		<b>** Rating</b> A : Acceptable M : Minimally Acceptable U : Unacceptable N : Not Inspected/Rated C : Corrected A/W : Acceptable but Monitor & Maintain		<b>+ Issue Type</b> Ma : Maintenance Deficiency Ob : Design & System Obsolescence En : Enforcement
--	--	---	--	---

## Maintenance Issue Types Only, Levee Inspection Report By Mile - Fall 2017

Waterway	Bank	Unit Miles	Inspection Start/End	Inspector
Unit No. 02 Mud Creek	Left	7.96	10/11/2017 10/11/2017	Bob Duffey

Photo 3 of 3 : UCIP\_FA\_2017\_31085\_56986.jpg



LS view: inside view of CMP on levee slope. Needs cleaning and clearing.

Photo 1 of 3 : UCIP\_FA\_2017\_31103\_57002.jpg



WS view: U type concrete headwall, pipe, and flapgate on levee slope.  
Soil/mud on outlet box. Vegetation debris blocking outlet box

* Location	** Rating	+ Issue Type
LS : Land Side    N/A : Not Applicable WS : Water Side CR : Crown	A : Acceptable                      N : Not Inspected/Rated M : Minimally Acceptable        C : Corrected U : Unacceptable                  A/W : Acceptable but Monitor & Maintain	Ma : Maintenance Deficiency Ob : Design & System Obsolescence En : Enforcement

**Flood Control Project Maintenance  
Levee Inspections**

**Maintenance Issue Types Only, Levee Inspection Report By Mile - Fall 2017**

**Butte County Department of Public Works**

Waterway	Bank	Unit Miles	Inspection Start/End	Inspector
Unit No. 02 Mud Creek	Left	7.96	10/11/2017 10/11/2017	Bob Duffey

LM Start	6.94	Rating **	M	Issue No.	55 (cont)	
LM End	6.94	Issue Type +	Ma	Location *		
Category	Supplemental			GPS Latitude/Longitude		
				Start	End	
Item	DWR UCIP LMA Responsibility			39.722798 °	39.722798 °	
				-121.937828 °	-121.937828 °	
DWR ID						
Comment Code						
Inspector Comment						
FS_ID:31103						
DS_ID:19252						
EP_NO: N/A						
Repair Type: Non-Urgent						
Crossing Status: Found						
UCIP Comments: Needs cleaning and clearing of debris.						
FIELD_STRUCT_DESC: 24-inch CM pipe through the levee, 15.0 feet below the crown. Flap gate on the waterward end. Concrete "U" headwalls on both ends. Grouted riprap apron on the landward end. Grouted riprap spillway on the waterward end. O&M Manual Sac 504, May 1965.						
FS Date: 2/25/2014						

Photo 2 of 3 : UCIP\_FA\_2017\_31103\_57001.jpg



LS view: U type concrete headwall and CMP on levee slope. Soil/mud on inlet box.

LM Start	<b>6.94</b>	Rating **	M	Issue No.	<b>55 (cont)</b>
LM End	<b>6.94</b>	Issue Type +	Ma	Location *	

Photo 3 of 3 : UCIP\_FA\_2017\_31103\_57000.jpg



LS view: inside view of CMP on levee slope. Needs cleaning and clearing.

<b>* Location</b> LS : Land Side    N/A : Not Applicable WS : Water Side CR : Crown	<b>** Rating</b> A : Acceptable M : Minimally Acceptable U : Unacceptable	N : Not Inspected/Rated C : Corrected A/W : Acceptable but Monitor & Maintain	<b>+ Issue Type</b> Ma : Maintenance Deficiency Ob : Design & System Obsolescence En : Enforcement
--	--	---	---



**Flood Control Project Maintenance  
Levee Inspections**

## Maintenance Issue Types Only, Levee Inspection Report By Mile - Fall 2017

### Butte County Department of Public Works

Waterway	Bank	Unit Miles	Inspection Start/End	Inspector
Unit No. 02 Mud Creek	Left	7.96	10/11/2017 10/11/2017	Bob Duffey

LM Start	7.17	Rating **	M	Issue No.	40
LM End	7.22	Issue Type +	Ma	Location *	LS
Category	Earthen Levee			GPS Latitude/Longitude	
				Start	End
Item	Vegetation			39.719593 °	39.718933 °
				-121.938137 °	-121.937635 °
DWR ID	DWR_NA0003_02_f_2016_40				
Comment Code					
V2 : Remove the wild growth other than native grasses from the levee slopes.					
Inspector Comment					

Photo 1 of 1 : FA\_2017\_NA0003\_65\_40\_20170911\_00017.jpg



View of the dense vegetation along the landside toe blocking visibility and access.

LM Start	7.22	Rating **	M	Issue No.	56
LM End	7.22	Issue Type +	Ma	Location *	
Category	Supplemental			GPS Latitude/Longitude	
				Start	End
Item	DWR UCIP LMA Responsibility			39.718882 °	39.718882 °
				-121.937602 °	-121.937602 °
DWR ID					
Comment Code					
Inspector Comment					
FS_ID:32085 DS_ID:19253 EP_NO: N/A Repair Type: Non-Urgent Crossing Status: Found UCIP Comments: Slide gates in CMP risers on waterside shoulder.Needs cleaning and clearing of debris. FIELD_STRUCT_DESC: 1 of 3: Three 48-inch CM pipes through levee, 18.0 feet below crown. Flap gate on the waterward end. Slide gate in CMP riser on waterside shoulder. Concrete "U" headwalls on both ends. Grouted riprap apron on the landward end. Grouted riprap spillway on the waterward end. O&M Manual Sac 504, May 1965. FS Date: 2/25/2014					

Photo 1 of 3 : UCIP\_FA\_2017\_32085\_58585.jpg



WS view: slide gates in CMP risers on waterside shoulder.

<b>* Location</b> LS : Land Side    N/A : Not Applicable WS : Water Side CR : Crown	<b>** Rating</b> A : Acceptable M : Minimally Acceptable U : Unacceptable  N : Not Inspected/Rated C : Corrected A/W : Acceptable but Monitor & Maintain	<b>+ Issue Type</b> Ma : Maintenance Deficiency Ob : Design & System Obsolescence En : Enforcement
--	---	---



**Flood Control Project Maintenance  
Levee Inspections**

**Maintenance Issue Types Only, Levee Inspection Report By Mile - Fall 2017**

**Butte County Department of Public Works**

Waterway	Bank	Unit Miles	Inspection Start/End	Inspector
Unit No. 02 Mud Creek	Left	7.96	10/11/2017 10/11/2017	Bob Duffey

LM Start	7.22	Rating **	M	Issue No.	56 (cont)
LM End	7.22	Issue Type +	Ma	Location *	
Category	Supplemental			GPS Latitude/Longitude	
				Start	End
Item	DWR UCIP LMA Responsibility			39.718882 °	39.718882 °
				-121.937602 °	-121.937602 °
DWR ID					
Comment Code					
Inspector Comment					
FS_ID:32085					
DS_ID:19253					
EP_NO: N/A					
Repair Type: Non-Urgent					
Crossing Status: Found					
UCIP Comments: Slide gates in CMP risers on waterside shoulder.Needs cleaning and clearing of debris.					
FIELD_STRUCT_DESC: 1 of 3: Three 48-inch CM pipes through levee, 18.0 feet below crown. Flap gate on the waterward end. Slide gate in CMP riser on waterside shoulder. Concrete "U" headwalls on both ends. Grouted riprap apron on the landward end. Grouted riprap spillway on the waterward end. O&M Manual Sac 504, May 1965.					
FS Date: 2/25/2014					

LM Start	7.22	Rating **	M	Issue No.	56 (cont)
LM End	7.22	Issue Type +	Ma	Location *	

Photo 2 of 3 : UCIP\_FA\_2017\_32085\_58584.jpg



WS view: U type concrete headwall, pipes, and flapgates on levee slope. Soil/mud on outlet box. Vegetation debris blocking outlet box

Photo 3 of 3 : UCIP\_FA\_2017\_32085\_58586.jpg



LS view: U type concrete headwall and CMPs on levee slope. Soil/mud on inlet box.

<b>* Location</b> LS : Land Side    N/A : Not Applicable WS : Water Side CR : Crown		<b>** Rating</b> A : Acceptable M : Minimally Acceptable U : Unacceptable		N : Not Inspected/Rated C : Corrected A/W : Acceptable but Monitor & Maintain		<b>+ Issue Type</b> Ma : Maintenance Deficiency Ob : Design & System Obsolescence En : Enforcement	
--	--	--	--	---	--	---	--



**Flood Control Project Maintenance  
Levee Inspections**

## Maintenance Issue Types Only, Levee Inspection Report By Mile - Fall 2017

### Butte County Department of Public Works

Waterway	Bank	Unit Miles	Inspection Start/End	Inspector
Unit No. 02 Mud Creek	Left	7.96	10/11/2017 10/11/2017	Bob Duffey

LM Start	7.23	Rating **	M	Issue No.	57 (cont)	
LM End	7.23	Issue Type +	Ma	Location *		
Category	Supplemental			GPS Latitude/Longitude		
				Start	End	
Item	DWR UCIP LMA Responsibility			39.718849 °	39.718849 °	
				-121.937580 °	-121.937580 °	
DWR ID						
Comment Code						
Inspector Comment						
FS_ID:32087						
DS_ID:19261						
EP_NO: N/A						
Repair Type: Non-Urgent						
Crossing Status: Found						
UCIP Comments: Slide gates in CMP risers on waterside shoulder.Needs cleaning and clearing on both pipe ends.						
FIELD_STRUCT_DESC: 3 of 3: Three 48-inch CM pipes through levee, 18.0 feet below crown Flap gate on the waterward end. Slide gate in CMP riser on waterside shoulder. Concrete "U" headwalls on both ends. Grouted riprap apron on the landward end. Grouted riprap spillway on the waterward end. O&M Manual Sac 504, May 1965.						
FS Date: 2/25/2014						

Photo 3 of 3 : UCIP\_FA\_2017\_32087\_58590.jpg



LS view: U type concrete headwall and CMPs on levee slope. Soil/mud on inlet box.

LM Start	7.23	Rating **	M	Issue No.	58
LM End	7.23	Issue Type +	Ma	Location *	
Category	Supplemental			GPS Latitude/Longitude	
				Start	End
Item	DWR UCIP LMA Responsibility			39.718862 °	39.718862 °
				-121.937594 °	-121.937594 °
DWR ID					
Comment Code					
Inspector Comment					
FS_ID:32086 DS_ID:19260 EP_NO: N/A Repair Type: Non-Urgent Crossing Status: Found UCIP Comments: Slide gates in CMP risers on waterside shoulder.Needs cleaning and clearing of debris. FIELD_STRUCT_DESC: 2 of 3: Three 48-inch CM pipes through levee, 18.0 feet below crown Flap gate on the waterward end. Concrete "U" headwalls on both ends. Grouted riprap apron on the landward end. Grouted riprap spillway on the waterward end. O&M Manual Sac 504, May 1965. FS Date: 2/25/2014					

Photo 1 of 3 : UCIP\_FA\_2017\_32086\_58589.jpg



WS view: slide gates in CMP risers on waterside shoulder.

<b>* Location</b> LS : Land Side    N/A : Not Applicable WS : Water Side CR : Crown		<b>** Rating</b> A : Acceptable M : Minimally Acceptable U : Unacceptable N : Not Inspected/Rated C : Corrected A/W : Acceptable but Monitor & Maintain		<b>+ Issue Type</b> Ma : Maintenance Deficiency Ob : Design & System Obsolescence En : Enforcement
--	--	---	--	---







**Flood Control Project Maintenance  
Levee Inspections**

## Maintenance Issue Types Only, Levee Inspection Report By Mile - Fall 2017

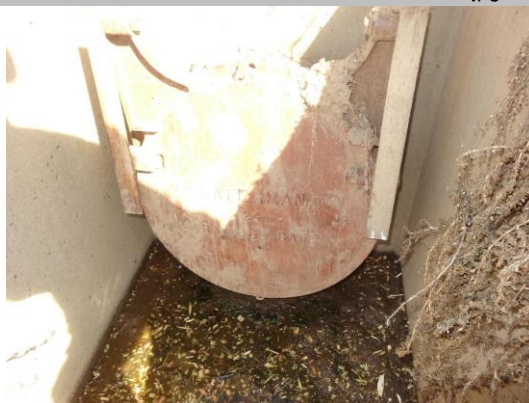
### Butte County Department of Public Works

Waterway	Bank	Unit Miles	Inspection Start/End	Inspector
Unit No. 02 Mud Creek	Left	7.96	10/11/2017 10/11/2017	Bob Duffey

LM Start	7.77	Rating **	M	Issue No.	59
LM End	7.77	Issue Type +	Ma	Location *	
Category	Supplemental			GPS Latitude/Longitude	
				Start	End
Item	DWR UCIP LMA Responsibility			39.711436 °	39.711436 °
				-121.937135 °	-121.937135 °
DWR ID					
Comment Code					
Inspector Comment					
FS_ID:31129					
DS_ID:19254					
EP_NO: N/A					
Repair Type: Non-Urgent					
Crossing Status: Found					
UCIP Comments: Debris in inlet pipe, needs cleaning and clearing.					
FIELD_STRUCT_DESC: 24-inch CM pipe through the levee, 18.0 feet below the crown. Flap gate on the waterward end. Concrete "U" headwalls on both ends. Grouted riprap apron on the landward end. Grouted riprap spillway on the waterward end. O&M Manual Sac 504, May 1965.					
FS Date: 2/25/2014					

LM Start	<b>7.77</b>	Rating **	M	Issue No.	<b>59 (cont)</b>
LM End	<b>7.77</b>	Issue Type +	Ma	Location *	

Photo 1 of 2 : UCIP\_FA\_2017\_31129\_57036.jpg



WS view: U type concrete headwall, pipe, and flapgate on levee slope. Soil/mud on outlet box.

Photo 2 of 2 : UCIP\_FA\_2017\_31129\_57035.jpg



LS view: U type concrete headwall and CMP on levee slope. Soil/mud and vegetation on inlet box.

<b>* Location</b> LS : Land Side    N/A : Not Applicable WS : Water Side CR : Crown		<b>** Rating</b> A : Acceptable M : Minimally Acceptable U : Unacceptable		N : Not Inspected/Rated C : Corrected A/W : Acceptable but Monitor & Maintain		<b>+ Issue Type</b> Ma : Maintenance Deficiency Ob : Design & System Obsolescence En : Enforcement	
--	--	--	--	---	--	---	--

**Flood Control Project Maintenance  
Levee Inspections**

**Maintenance Issue Types Only, Levee Inspection Report By Mile - Fall 2017**

**Butte County Department of Public Works**

Waterway	Bank	Unit Miles	Inspection Start/End	Inspector
Unit No. 02A Channel Slough	Left	0.26	10/11/2017 10/11/2017	Bob Duffey

LM Start	0.18	Rating **	A	Issue No.	3
LM End	0.18	Issue Type +	Ma	Location *	LS
Category	Earthen Levee			GPS Latitude/Longitude	
				Start	End
Item	Vegetation			39.735305 °	39.735305 °
				-121.928998 °	-121.928998 °
DWR ID	DWR_NA0003_02A_f_2017_3				
Comment Code					
V1 : Control annual grass and weeds on the levee slopes and easements.					
Inspector Comment					
There is no vegetation on either slope.					

Photo 1 of 1 : FA\_2017\_NA0003\_66\_3\_20171019\_00001.jpg



View of no vegetation on both slopes.

<b>* Location</b> LS : Land Side    N/A : Not Applicable WS : Water Side CR : Crown	<b>** Rating</b> A : Acceptable M : Minimally Acceptable U : Unacceptable N : Not Inspected/Rated C : Corrected A/W : Acceptable but Monitor & Maintain	<b>+ Issue Type</b> Ma : Maintenance Deficiency Ob : Design & System Obsolescence En : Enforcement
--	---	---

**Flood Control Project Maintenance  
Levee Inspections**

## Maintenance Issue Types Only, Levee Inspection Report By Mile - Fall 2017

### Butte County Department of Public Works

Waterway	Bank	Unit Miles	Inspection Start/End	Inspector
Unit No. 03 Sycamore and Sheep Hollow Creeks	Right	4.05	10/11/2017 10/11/2017	Bob Duffey

LM Start	0.02	Rating **	M	Issue No.	12
LM End	0.02	Issue Type +	Ma	Location *	LS
Category	Earthen Levee			GPS Latitude/Longitude	
				Start	End
Item	Slope Stability			39.785970 °	39.785970 °
				-121.882797 °	-121.882797 °
DWR ID	DWR_NA0003_03_f_2015_12				
Comment Code					
S3 : Repair the levee slope damaged by vehicle traffic and prevent access where possible.					
Inspector Comment					
Repair the erosion on both slopes caused by motorcycle traffic.					

Photo 1 of 1 : FA\_2017\_NA0003\_67\_12\_20170911\_00002.jpg



View of the erosion on both slopes caused by motorcycle traffic.

LM Start	0.07	Rating **	M	Issue No.	3
LM End	0.07	Issue Type +	Ma	Location *	WS
Category	Earthen Levee			GPS Latitude/Longitude	
				Start	End
Item	Slope Stability			39.786068 °	39.786068 °
				-121.881828 °	-121.881828 °
DWR ID	DWR_NA0003_03_s_2012_3				
Comment Code					
S3 : Repair the levee slope damaged by vehicle traffic and prevent access where possible.					
Inspector Comment					
Repair the erosion on landside slope caused by motorcycle traffic.					

Photo 1 of 1 : FA\_2017\_NA0003\_67\_3\_20170911\_00001.jpg



View of the erosion caused by motorcycles on the land side slope.

<b>* Location</b> LS : Land Side    N/A : Not Applicable WS : Water Side CR : Crown	<b>** Rating</b> A : Acceptable M : Minimally Acceptable U : Unacceptable	N : Not Inspected/Rated C : Corrected A/W : Acceptable but Monitor & Maintain	<b>+ Issue Type</b> Ma : Maintenance Deficiency Ob : Design & System Obsolescence En : Enforcement
--	--	---	---

**Flood Control Project Maintenance  
Levee Inspections**

**Maintenance Issue Types Only, Levee Inspection Report By Mile - Fall 2017**

**Butte County Department of Public Works**

Waterway	Bank	Unit Miles	Inspection Start/End	Inspector
Unit No. 03 Sycamore and Sheep Hollow Creeks	Right	4.05	10/11/2017 10/11/2017	Bob Duffey

LM Start	0.10	Rating **	A/W	Issue No.	23
LM End	0.10	Issue Type +	Ma	Location *	
Category	Supplemental			GPS Latitude/Longitude	
				Start	End
Item	DWR UCIP LMA Responsibility			39.786195 °	39.786195 °
				-121.881325 °	-121.881325 °
DWR ID					

Comment Code

Inspector Comment

FS\_ID:51844  
DS\_ID:19262  
EP\_NO: N/A  
Repair Type: No Action Needed  
Crossing Status: Found  
UCIP Comments: 05/16/2017 Crossing has been downgraded from Non-Urgent to No Action Needed. The flap gate appears to be in good working order based on the photos, and the small pile of debris not enough to warrant Non-Urgent rating. (K. Fazel - UCIP)03/11/2014:Slide gate in CMP riser on waterside.The culvert was working during field inspection. (P. Amatya - DWR)  
FIELD\_STRUCT\_DESC: 42-inch CM pipe through the levee, 14 feet below the crown. Flap gate on the waterward end. Slid gate in CM riser on the waterward slope. Concrete "U" headwalls on both ends. Grouted riprap apron on the landward end. Grouted riprap spillway on the waterward end. O&M Manual Sac 504, May 1965.  
FS Date: 3/11/2014

LM Start	<b>0.10</b>	Rating **	A/W	Issue No.	<b>23 (cont)</b>
LM End	<b>0.10</b>	Issue Type +	Ma	Location *	

Photo 1 of 3 : UCIP\_FA\_2017\_51844\_58602.jpg



WS view: U type concrete headwall, pipe, and flapgate on levee slope.

Photo 2 of 3 : UCIP\_FA\_2017\_51844\_58601.jpg



WS view: U type concrete headwall of CMP culvert on levee slope.  
Grouted riprap levee slope and spillway.

* Location LS : Land Side    N/A : Not Applicable WS : Water Side CR : Crown		** Rating A : Acceptable M : Minimally Acceptable U : Unacceptable N : Not Inspected/Rated C : Corrected A/W : Acceptable but Monitor & Maintain		+ Issue Type Ma : Maintenance Deficiency Ob : Design & System Obsolescence En : Enforcement	
---	--	--	--	--	--



**Flood Control Project Maintenance  
Levee Inspections**

## Maintenance Issue Types Only, Levee Inspection Report By Mile - Fall 2017

### Butte County Department of Public Works

Waterway	Bank	Unit Miles	Inspection Start/End	Inspector
Unit No. 03 Sycamore and Sheep Hollow Creeks	Right	4.05	10/11/2017 10/11/2017	Bob Duffey

LM Start	0.10	Rating **	A/W	Issue No.	23 (cont)	
LM End	0.10	Issue Type +	Ma	Location *		
Category	Supplemental			GPS Latitude/Longitude		
				Start	End	
Item	DWR UCIP LMA Responsibility			39.786195 °	39.786195 °	
				-121.881325 °	-121.881325 °	
DWR ID						
Comment Code						
Inspector Comment						
FS_ID:51844 DS_ID:19262 EP_NO: N/A Repair Type: No Action Needed Crossing Status: Found UCIP Comments: 05/16/2017 Crossing has been downgraded from Non-Urgent to No Action Needed. The flap gate appears to be in good working order based on the photos, and the small pile of debris not enough to warrant Non-Urgent rating. (K. Fazel - UCIP)03/11/2014:Slide gate in CMP riser on waterside.The culvert was working during field inspection. (P. Amatya - DWR) FIELD_STRUCT_DESC: 42-inch CM pipe through the levee, 14 feet below the crown. Flap gate on the waterward end. Slid gate in CM riser on the waterward slope. Concrete "U" headwalls on both ends. Grouted riprap apron on the landward end. Grouted riprap spillway on the waterward end. O&M Manual Sac 504, May 1965. FS Date: 3/11/2014						

Photo 3 of 3 : UCIP\_FA\_2017\_51844\_58600.jpg



WS view: slide gate in CMP riser on waterside shoulder.

LM Start	0.35	Rating **	M	Issue No.	15
LM End	0.35	Issue Type +	Ma	Location *	LS
Category	Earthen Levee			GPS Latitude/Longitude	
				Start	End
Item	Trim / Thin Trees			39.785704°	39.785704°
				-121.877004°	-121.877004°
DWR ID	DWR_NA0003_03_f_2016_15				
Comment Code					
T1 : Trim trees to at least five feet above ground level.					
Inspector Comment					

Photo 1 of 1 : FA\_2017\_NA0003\_67\_15\_20170911\_00004.jpg



View of the overgrown tree along the landside slope.

<b>* Location</b> LS : Land Side    N/A : Not Applicable WS : Water Side CR : Crown	<b>** Rating</b> A : Acceptable M : Minimally Acceptable U : Unacceptable	N : Not Inspected/Rated C : Corrected A/W : Acceptable but Monitor & Maintain	<b>+ Issue Type</b> Ma : Maintenance Deficiency Ob : Design & System Obsolescence En : Enforcement
--	--	---	---

**Flood Control Project Maintenance  
Levee Inspections**

**Maintenance Issue Types Only, Levee Inspection Report By Mile - Fall 2017**

**Butte County Department of Public Works**

Waterway	Bank	Unit Miles	Inspection Start/End	Inspector
Unit No. 03 Sycamore and Sheep Hollow Creeks	Right	4.05	10/11/2017 10/11/2017	Bob Duffey

LM Start	0.39	Rating **	A/W	Issue No.	24
LM End	0.39	Issue Type +	Ma	Location *	
Category	Supplemental			GPS Latitude/Longitude	
				Start	End
Item	DWR UCIP LMA Responsibility			39.785262 °	39.785262 °
				-121.876622 °	-121.876622 °
DWR ID					
Comment Code					
Inspector Comment					
FS_ID:32104 DS_ID:19278 EP_NO: N/A Repair Type: No Action Needed Crossing Status: Found UCIP Comments: Slide gate in CMP riser on waterside.The culvert was working during the field visit. FIELD_STRUCT_DESC: 1 of 3: Three 48-inch CM pipes through the levee, 11.7 feet below the crown. Slide gates on each pipe in riser well on the waterward slope. Concrete "U" headwall on both ends. Flap gates on the waterward end. Grouted riprap outlet channel. O&M Manual Sac 504, May 1965. FS Date: 3/11/2014					

LM Start	<b>0.39</b>	Rating **	A/W	Issue No.	<b>24 (cont)</b>
LM End	<b>0.39</b>	Issue Type +	Ma	Location *	

Photo 1 of 2 : UCIP\_FA\_2017\_32104\_58606.jpg



WS view: U type concrete headwall and three CMPs with slide gates on levee slope. Grouted riprap spillway.

Photo 2 of 2 : UCIP\_FA\_2017\_32104\_58605.jpg



LS view: U type concrete headwall and three CMPs on levee slope. Soil/mud on inlet box.

<b>* Location</b> LS : Land Side    N/A : Not Applicable WS : Water Side CR : Crown		<b>** Rating</b> A : Acceptable M : Minimally Acceptable U : Unacceptable N : Not Inspected/Rated C : Corrected A/W : Acceptable but Monitor & Maintain		<b>+ Issue Type</b> Ma : Maintenance Deficiency Ob : Design & System Obsolescence En : Enforcement
--	--	---	--	---

**Flood Control Project Maintenance  
Levee Inspections**

**Maintenance Issue Types Only, Levee Inspection Report By Mile - Fall 2017**

**Butte County Department of Public Works**

Waterway	Bank	Unit Miles	Inspection Start/End	Inspector
Unit No. 03 Sycamore and Sheep Hollow Creeks	Right	4.05	10/11/2017 10/11/2017	Bob Duffey

LM Start	0.39	Rating **	A/W	Issue No.	25	
LM End	0.39	Issue Type +	Ma	Location *		
Category	Supplemental			GPS Latitude/Longitude		
				Start		End
Item	DWR UCIP LMA Responsibility			39.785246 °		39.785246 °
				-121.876609 °		-121.876609 °
DWR ID						
Comment Code						
Inspector Comment						
FS_ID:32105 DS_ID:19277 EP_NO: N/A Repair Type: No Action Needed Crossing Status: Found UCIP Comments: Slide gate in CMP riser on waterside.The culvert was working during the field visit. FIELD_STRUCT_DESC: 2 of 3: Three 48-inch CM pipes through the levee, 11.7 feet below the crown. Slide gates on each pipe in riser well on the waterward slope. Concrete "U" headwall on both ends. Flap gates on the waterward end. Grouted riprap outlet channel. O&M Manual Sac 504, May 1965. FS Date: 3/11/2014						

LM Start	<b>0.39</b>	Rating **	A/W	Issue No.	<b>25 (cont)</b>
LM End	<b>0.39</b>	Issue Type +	Ma	Location *	

Photo 1 of 2 : UCIP\_FA\_2017\_32105\_58608.jpg



WS view: U type concrete headwall and three CMPs with slide gates on levee slope. Grouted riprap spillway.

Photo 2 of 2 : UCIP\_FA\_2017\_32105\_58607.jpg



LS view: U type concrete headwall and three CMPs on levee slope. Soil/mud on inlet box.

<b>* Location</b> LS : Land Side    N/A : Not Applicable WS : Water Side CR : Crown		<b>** Rating</b> A : Acceptable M : Minimally Acceptable U : Unacceptable N : Not Inspected/Rated C : Corrected A/W : Acceptable but Monitor & Maintain		<b>+ Issue Type</b> Ma : Maintenance Deficiency Ob : Design & System Obsolescence En : Enforcement
--	--	---	--	---



**Flood Control Project Maintenance  
Levee Inspections**

**Maintenance Issue Types Only, Levee Inspection Report By Mile - Fall 2017**

**Butte County Department of Public Works**

Waterway	Bank	Unit Miles	Inspection Start/End	Inspector
Unit No. 03 Sycamore and Sheep Hollow Creeks	Right	4.05	10/11/2017 10/11/2017	Bob Duffey

LM Start	0.39	Rating **	A/W	Issue No.	26
LM End	0.39	Issue Type +	Ma	Location *	
Category	Supplemental			GPS Latitude/Longitude	
				Start	End
Item	DWR UCIP LMA Responsibility			39.785230 °	39.785230 °
				-121.876592 °	-121.876592 °
DWR ID					
Comment Code					
Inspector Comment					
FS_ID:32106 DS_ID:19263 EP_NO: N/A Repair Type: No Action Needed Crossing Status: Found UCIP Comments: Slide gate in CMP riser on waterside.The culvert was working during the field visit. FIELD_STRUCT_DESC: 3 of 3: Three 48-inch CM pipes through the levee, 11.7 feet below the crown. Slide gates on each pipe in riser well on the waterward slope. Concrete "U" headwall on both ends. Flap gates on the waterward end. Grouted riprap outlet channel. O&M Manual Sac 504, May 1965. FS Date: 3/11/2014					

LM Start	<b>0.39</b>	Rating **	A/W	Issue No.	<b>26 (cont)</b>
LM End	<b>0.39</b>	Issue Type +	Ma	Location *	

Photo 1 of 2 : UCIP\_FA\_2017\_32106\_58610.jpg



WS view: U type concrete headwall and three CMPs with slide gates on levee slope. Grouted riprap spillway.

Photo 2 of 2 : UCIP\_FA\_2017\_32106\_58609.jpg



LS view: U type concrete headwall and three CMPs on levee slope. Soil/mud on inlet box.

<b>* Location</b> LS : Land Side    N/A : Not Applicable WS : Water Side CR : Crown		<b>** Rating</b> A : Acceptable M : Minimally Acceptable U : Unacceptable N : Not Inspected/Rated C : Corrected A/W : Acceptable but Monitor & Maintain		<b>+ Issue Type</b> Ma : Maintenance Deficiency Ob : Design & System Obsolescence En : Enforcement
--	--	---	--	---



**Flood Control Project Maintenance  
Levee Inspections**

**Maintenance Issue Types Only, Levee Inspection Report By Mile - Fall 2017**

**Butte County Department of Public Works**

Waterway	Bank	Unit Miles	Inspection Start/End	Inspector
Unit No. 03 Sycamore and Sheep Hollow Creeks	Right	4.05	10/11/2017 10/11/2017	Bob Duffey

LM Start	1.25	Rating **	A/W	Issue No.	27
LM End	1.25	Issue Type +	Ma	Location *	
Category	Supplemental		GPS Latitude/Longitude		
			Start	End	
Item	DWR UCIP LMA Responsibility		39.779678 °	39.779678 °	
			-121.862632 °	-121.862632 °	
DWR ID					

Comment Code

Inspector Comment

FS\_ID:32107  
DS\_ID:19264  
EP\_NO: N/A  
Repair Type: No Action Needed  
Crossing Status: Found  
UCIP Comments: The culvert was working during the field visit.  
FIELD\_STRUCT\_DESC: 24-inch CM pipe through the levee, 11.7 feet below the crown. Flap gate on the waterward end. Concrete "U" headwall on both ends. O&M Manual Sac 504, May 1965.  
FS Date: 3/11/2014

LM Start	1.25	Rating **	A/W	Issue No.	27 (cont)
LM End	1.25	Issue Type +	Ma	Location *	

Photo 1 of 3 : UCIP\_FA\_2017\_32107\_58613.jpg



WS view: U type concrete headwall and grouted riprap on levee slope.

Photo 2 of 3 : UCIP\_FA\_2017\_32107\_58612.jpg



WS view: U type concrete headwall, flapgate, and CMP on levee slope.

<b>* Location</b> LS : Land Side    N/A : Not Applicable WS : Water Side CR : Crown		<b>** Rating</b> A : Acceptable M : Minimally Acceptable U : Unacceptable N : Not Inspected/Rated C : Corrected A/W : Acceptable but Monitor & Maintain		<b>+ Issue Type</b> Ma : Maintenance Deficiency Ob : Design & System Obsolescence En : Enforcement
--	--	---	--	---

**Flood Control Project Maintenance  
Levee Inspections**

**Maintenance Issue Types Only, Levee Inspection Report By Mile - Fall 2017**

**Butte County Department of Public Works**

Waterway	Bank	Unit Miles	Inspection Start/End	Inspector
Unit No. 03 Sycamore and Sheep Hollow Creeks	Right	4.05	10/11/2017 10/11/2017	Bob Duffey

LM Start	1.25	Rating **	A/W	Issue No.	27 (cont)
LM End	1.25	Issue Type +	Ma	Location *	
Category	Supplemental			GPS Latitude/Longitude	
				Start	End
Item	DWR UCIP LMA Responsibility			39.779678 °	39.779678 °
				-121.862632 °	-121.862632 °
DWR ID					
Comment Code					
Inspector Comment					
FS_ID:32107 DS_ID:19264 EP_NO: N/A Repair Type: No Action Needed Crossing Status: Found UCIP Comments: The culvert was working during the field visit. FIELD_STRUCT_DESC: 24-inch CM pipe through the levee, 11.7 feet below the crown. Flap gate on the waterward end. Concrete "U" headwall on both ends. O&M Manual Sac 504, May 1965. FS Date: 3/11/2014					

Photo 3 of 3 : UCIP\_FA\_2017\_32107\_58611.jpg



LS view: U type concrete headwall and CMP on levee slope.

LM Start	1.34	Rating **	A	Issue No.	22
LM End	1.34	Issue Type +	Ma	Location *	LS
Category	Earthen Levee			GPS Latitude/Longitude	
				Start	End
Item	Vegetation			39.779430 °	39.779430 °
				-121.860978 °	-121.860978 °
DWR ID	DWR_NA0003_03_f_2017_22				
Comment Code					
V1 : Control annual grass and weeds on the levee slopes and easements.					
Inspector Comment					
There is no vegetation on either slope.					

Photo 1 of 1 : FA\_2017\_NA0003\_67\_22\_20171019\_00069.jpg



View of no vegetation on both slopes.

<b>* Location</b> LS : Land Side    N/A : Not Applicable WS : Water Side CR : Crown	<b>** Rating</b> A : Acceptable M : Minimally Acceptable U : Unacceptable	N : Not Inspected/Rated C : Corrected A/W : Acceptable but Monitor & Maintain	<b>+ Issue Type</b> Ma : Maintenance Deficiency Ob : Design & System Obsolescence En : Enforcement
--	--	---	---

**Flood Control Project Maintenance  
Levee Inspections**

**Maintenance Issue Types Only, Levee Inspection Report By Mile - Fall 2017**

**Butte County Department of Public Works**

Waterway	Bank	Unit Miles	Inspection Start/End	Inspector
Unit No. 03 Sycamore and Sheep Hollow Creeks	Right	4.05	10/11/2017 10/11/2017	Bob Duffey

LM Start	1.50	Rating **	A/W	Issue No.	28	
LM End	1.50	Issue Type +	Ma	Location *		
Category	Supplemental			GPS Latitude/Longitude		
				Start	End	
Item	DWR UCIP LMA Responsibility			39.779230°	39.779230°	
				-121.857945°	-121.857945°	
DWR ID						
Comment Code						
Inspector Comment						
FS_ID:31899						
DS_ID:19265						
EP_NO: N/A						
Repair Type: No Action Needed						
Crossing Status: Found						
UCIP Comments: Working during the field visit.						
FIELD_STRUCT_DESC: 24-inch CM pipe through the levee, 11.0 feet below the crown. Flap gate on the waterward end. Concrete "U" headwall on both ends. Grouted riprap apron on both ends. O&M Manual Sac 504, May 1965.						
FS Date: 3/11/2014						

LM Start	<b>1.50</b>	Rating **	A/W	Issue No.	<b>28 (cont)</b>
LM End	<b>1.50</b>	Issue Type +	Ma	Location *	

Photo 1 of 2 : UCIP\_FA\_2017\_31899\_58187.jpg



WS view: U type concrete headwall, flapgate, and CMP on levee slope. Looks clean and clear.

Photo 2 of 2 : UCIP\_FA\_2017\_31899\_58186.jpg



LS view: U type concrete headwall and CMP on levee slope. Looks clean and clear.

<b>* Location</b> LS : Land Side    N/A : Not Applicable WS : Water Side CR : Crown		<b>** Rating</b> A : Acceptable M : Minimally Acceptable U : Unacceptable N : Not Inspected/Rated C : Corrected A/W : Acceptable but Monitor & Maintain		<b>+ Issue Type</b> Ma : Maintenance Deficiency Ob : Design & System Obsolescence En : Enforcement
--	--	---	--	---



**Flood Control Project Maintenance  
Levee Inspections**

## Maintenance Issue Types Only, Levee Inspection Report By Mile - Fall 2017

### Butte County Department of Public Works

Waterway	Bank	Unit Miles	Inspection Start/End	Inspector
Unit No. 03 Sycamore and Sheep Hollow Creeks	Right	4.05	10/11/2017 10/11/2017	Bob Duffey

LM Start	2.17	Rating **	M	Issue No.	30	
LM End	2.17	Issue Type +	Ma	Location *		
Category	Supplemental			GPS Latitude/Longitude		
				Start	End	
Item	DWR UCIP LMA Responsibility			39.785290 °	39.785290 °	
				-121.844235 °	-121.844235 °	
DWR ID						
Comment Code						
Inspector Comment						
FS_ID:32124 DS_ID:19267 EP_NO: N/A Repair Type: Non-Urgent Crossing Status: Found UCIP Comments: Pipe is about 4 feet below the crown. Needs cleaning and clearing the culvert. FIELD_STRUCT_DESC: 24-inch CM pipe through the levee, 6.0 feet below the crown. Flap gate on the waterward end. Concrete "U" headwall on each end. O&M Manual Sac 504, May 1965. FS Date: 3/7/2014						

Photo 1 of 3 : UCIP\_FA\_2017\_32124\_58625.jpg



WS view: concrete headwall, pipe, and flapgate on levee slope.  
Vegetation and mud on outlet box.

LM Start	<b>2.17</b>	Rating **	M	Issue No.	<b>30 (cont)</b>
LM End	<b>2.17</b>	Issue Type +	Ma	Location *	

Photo 2 of 3 : UCIP\_FA\_2017\_32124\_58624.jpg



LS view: U type concrete headwall of CMP culvert on levee slope.  
Vegetation on inlet box.

<b>* Location</b> LS : Land Side    N/A : Not Applicable WS : Water Side CR : Crown		<b>** Rating</b> A : Acceptable                      N : Not Inspected/Rated M : Minimally Acceptable        C : Corrected U : Unacceptable                  A/W : Acceptable but Monitor & Maintain		<b>+ Issue Type</b> Ma : Maintenance Deficiency Ob : Design & System Obsolescence En : Enforcement
--	--	---	--	---

**Flood Control Project Maintenance  
Levee Inspections**

## Maintenance Issue Types Only, Levee Inspection Report By Mile - Fall 2017

### Butte County Department of Public Works

Waterway	Bank	Unit Miles	Inspection Start/End	Inspector
Unit No. 03 Sycamore and Sheep Hollow Creeks	Right	4.05	10/11/2017 10/11/2017	Bob Duffey

LM Start	2.17	Rating **	M	Issue No.	30 (cont)	
LM End	2.17	Issue Type +	Ma	Location *		
Category	Supplemental			GPS Latitude/Longitude		
				Start	End	
Item	DWR UCIP LMA Responsibility			39.785290 °	39.785290 °	
				-121.844235 °	-121.844235 °	
DWR ID						
Comment Code						
Inspector Comment						
FS_ID:32124 DS_ID:19267 EP_NO: N/A Repair Type: Non-Urgent Crossing Status: Found UCIP Comments: Pipe is about 4 feet below the crown. Needs cleaning and clearing the culvert. FIELD_STRUCT_DESC: 24-inch CM pipe through the levee, 6.0 feet below the crown. Flap gate on the waterward end. Concrete "U" headwall on each end. O&M Manual Sac 504, May 1965. FS Date: 3/7/2014						

Photo 3 of 3 : UCIP\_FA\_2017\_32124\_58627.jpg



LS view: inside view of CMP on levee slope. Needs cleaning and clearing.

LM Start	3.08	Rating **	M	Issue No.	32	
LM End	3.08	Issue Type +	Ma	Location *		
Category	Supplemental			GPS Latitude/Longitude		
				Start	End	
Item	DWR UCIP LMA Responsibility			39.778016 °	39.778016 °	
				-121.854460 °	-121.854460 °	
DWR ID						
Comment Code						
Inspector Comment						
FS_ID:31901						
DS_ID:19269						
EP_NO: N/A						
Repair Type: Non-Urgent						
Crossing Status: Found						
UCIP Comments: Needs cleaning and clearing the culvert.						
FIELD_STRUCT_DESC: 24-inch CM pipe through the levee, 11.0 feet below the crown. Flap gate on the waterward end. Concrete "U" headwalls on both ends. Grouted riprap apron on the landward end.						
Grouted riprap spillway on the waterward end. O&M Manual Sac 504, May 1965.						
FS Date: 3/7/2014						

Photo 1 of 3 : UCIP\_FA\_2017\_31901\_58194.jpg



WS view: U type concrete headwall, flapgate, and CMP on levee slope. Needs cleaning and clearing.

<b>* Location</b> LS : Land Side    N/A : Not Applicable WS : Water Side CR : Crown		<b>** Rating</b> A : Acceptable M : Minimally Acceptable U : Unacceptable N : Not Inspected/Rated C : Corrected A/W : Acceptable but Monitor & Maintain		<b>+ Issue Type</b> Ma : Maintenance Deficiency Ob : Design & System Obsolescence En : Enforcement
--	--	---	--	---

**Flood Control Project Maintenance  
Levee Inspections**

**Maintenance Issue Types Only, Levee Inspection Report By Mile - Fall 2017**

**Butte County Department of Public Works**

Waterway	Bank	Unit Miles	Inspection Start/End	Inspector
Unit No. 03 Sycamore and Sheep Hollow Creeks	Right	4.05	10/11/2017 10/11/2017	Bob Duffey

LM Start	3.08	Rating **	M	Issue No.	32 (cont)	
LM End	3.08	Issue Type +	Ma	Location *		
Category	Supplemental			GPS Latitude/Longitude		
				Start	End	
Item	DWR UCIP LMA Responsibility			39.778016°	39.778016°	
				-121.854460°	-121.854460°	
DWR ID						
Comment Code						
Inspector Comment						
FS_ID:31901 DS_ID:19269 EP_NO: N/A Repair Type: Non-Urgent Crossing Status: Found UCIP Comments: Needs cleaning and clearing the culvert. FIELD_STRUCT_DESC: 24-inch CM pipe through the levee, 11.0 feet below the crown. Flap gate on the waterward end. Concrete "U" headwalls on both ends. Grouted riprap apron on the landward end. Grouted riprap spillway on the waterward end. O&M Manual Sac 504, May 1965. FS Date: 3/7/2014						

LM Start	<b>3.08</b>	Rating **	M	Issue No.	<b>32 (cont)</b>
LM End	<b>3.08</b>	Issue Type +	Ma	Location *	

Photo 2 of 3 : UCIP\_FA\_2017\_31901\_58193.jpg



LS view: U type concrete headwall and CMP on levee slope. Soil/mud on inlet box.

Photo 3 of 3 : UCIP\_FA\_2017\_31901\_58195.jpg



LS view: inside view of CMP on levee slope. Needs cleaning and clearing.

<b>* Location</b> LS : Land Side    N/A : Not Applicable WS : Water Side CR : Crown	<b>** Rating</b> A : Acceptable M : Minimally Acceptable U : Unacceptable	N : Not Inspected/Rated C : Corrected A/W : Acceptable but Monitor & Maintain	<b>+ Issue Type</b> Ma : Maintenance Deficiency Ob : Design & System Obsolescence En : Enforcement
--	--	---	---



**Flood Control Project Maintenance  
Levee Inspections**

## Maintenance Issue Types Only, Levee Inspection Report By Mile - Fall 2017

### Butte County Department of Public Works

Waterway	Bank	Unit Miles	Inspection Start/End	Inspector
Unit No. 03 Sycamore and Sheep Hollow Creeks	Right	4.05	10/11/2017 10/11/2017	Bob Duffey

LM Start	3.19	Rating **	A/W	Issue No.	33	
LM End	3.19	Issue Type +	Ma	Location *		
Category	Supplemental			GPS Latitude/Longitude		
				Start	End	
Item	DWR UCIP LMA Responsibility			39.777463 °	39.777463 °	
				-121.852512 °	-121.852512 °	
DWR ID						
Comment Code						
Inspector Comment						
FS_ID:31902						
DS_ID:19270						
EP_NO: N/A						
Repair Type: No Action Needed						
Crossing Status: Found						
UCIP Comments:						
FIELD_STRUCT_DESC: 24-inch CM pipe through the levee, 11.0 feet						
below the crown. Flap gate on the waterward end. Concrete "U"						
headwalls on both ends. Grouted riprap apron on the landward end.						
Grouted riprap spillway on the waterward end. O&M Manual Sac 504,						
May 1965.						
FS Date: 3/7/2014						

Photo 1 of 3 : UCIP\_FA\_2017\_31902\_58201.jpg



WS view: U type concrete headwall and grouted riprap spillway on levee slope.

LM Start	<b>3.19</b>	Rating **	A/W	Issue No.	<b>33 (cont)</b>
LM End	<b>3.19</b>	Issue Type +	Ma	Location *	

Photo 2 of 3 : UCIP\_FA\_2017\_31902\_58200.jpg



WS view: U type concrete headwall and CMP on levee slope.

<b>* Location</b> LS : Land Side    N/A : Not Applicable WS : Water Side CR : Crown		<b>** Rating</b> A : Acceptable M : Minimally Acceptable U : Unacceptable N : Not Inspected/Rated C : Corrected A/W : Acceptable but Monitor & Maintain		<b>+ Issue Type</b> Ma : Maintenance Deficiency Ob : Design & System Obsolescence En : Enforcement
--	--	---	--	---

**Flood Control Project Maintenance  
Levee Inspections**

## Maintenance Issue Types Only, Levee Inspection Report By Mile - Fall 2017

### Butte County Department of Public Works

Waterway	Bank	Unit Miles	Inspection Start/End	Inspector
Unit No. 03 Sycamore and Sheep Hollow Creeks	Right	4.05	10/11/2017 10/11/2017	Bob Duffey

LM Start	3.19	Rating **	A/W	Issue No.	33 (cont)	
LM End	3.19	Issue Type +	Ma	Location *		
Category	Supplemental			GPS Latitude/Longitude		
				Start	End	
Item	DWR UCIP LMA Responsibility			39.777463 °	39.777463 °	
				-121.852512 °	-121.852512 °	
DWR ID						
Comment Code						
Inspector Comment						
FS_ID:31902						
DS_ID:19270						
EP_NO: N/A						
Repair Type: No Action Needed						
Crossing Status: Found						
UCIP Comments:						
FIELD_STRUCT_DESC: 24-inch CM pipe through the levee, 11.0 feet						
below the crown. Flap gate on the waterward end. Concrete "U"						
headwalls on both ends. Grouted riprap apron on the landward end.						
Grouted riprap spillway on the waterward end. O&M Manual Sac 504,						
May 1965.						
FS Date: 3/7/2014						

Photo 3 of 3 : UCIP\_FA\_2017\_31902\_58199.jpg



LS view: U type concrete headwall and CMP on levee slope. Soil/mud on inlet box.

LM Start	3.34	Rating **	M	Issue No.	34
LM End	3.34	Issue Type +	Ma	Location *	
Category	Supplemental			GPS Latitude/Longitude	
				Start	End
Item	DWR UCIP LMA Responsibility			39.777410 °	39.777410 °
				-121.849627 °	-121.849627 °
DWR ID					
Comment Code					
Inspector Comment					
FS_ID:31864 DS_ID:19271 EP_NO: N/A Repair Type: Non-Urgent Crossing Status: Found UCIP Comments: Needs cleaning and clearing the culvert. FIELD_STRUCT_DESC: 24-inch CM pipe through the levee, 10.5 feet below the crown. Flap gate on the waterward end. Concrete "U" headwalls on both ends. Grouted riprap apron on the landward end. Grouted riprap spillway on the waterward end. O&M Manual Sac 504, May 1965. FS Date: 3/7/2014					

Photo 1 of 3 : UCIP\_FA\_2017\_31864\_58069.jpg



WS view: U type concrete headwall, pipe, and flapgate on levee slope. Soil/mud on outlet box. Vegetation debris blocking outlet box.

<b>* Location</b> LS : Land Side    N/A : Not Applicable WS : Water Side CR : Crown		<b>** Rating</b> A : Acceptable M : Minimally Acceptable U : Unacceptable N : Not Inspected/Rated C : Corrected A/W : Acceptable but Monitor & Maintain		<b>+ Issue Type</b> Ma : Maintenance Deficiency Ob : Design & System Obsolescence En : Enforcement
--	--	---	--	---

**Flood Control Project Maintenance  
Levee Inspections**

**Maintenance Issue Types Only, Levee Inspection Report By Mile - Fall 2017**

**Butte County Department of Public Works**

Waterway	Bank	Unit Miles	Inspection Start/End	Inspector
Unit No. 03 Sycamore and Sheep Hollow Creeks	Right	4.05	10/11/2017 10/11/2017	Bob Duffey

LM Start	3.34	Rating **	M	Issue No.	34 (cont)
LM End	3.34	Issue Type +	Ma	Location *	
Category	Supplemental			GPS Latitude/Longitude	
				Start	End
Item	DWR UCIP LMA Responsibility			39.777410 °	39.777410 °
				-121.849627 °	-121.849627 °
DWR ID					

**Comment Code**

**Inspector Comment**

FS\_ID:31864  
DS\_ID:19271  
EP\_NO: N/A  
Repair Type: Non-Urgent  
Crossing Status: Found  
UCIP Comments: Needs cleaning and clearing the culvert.  
FIELD\_STRUCT\_DESC: 24-inch CM pipe through the levee, 10.5 feet below the crown. Flap gate on the waterward end. Concrete "U" headwalls on both ends. Grouted riprap apron on the landward end. Grouted riprap spillway on the waterward end. O&M Manual Sac 504, May 1965.  
FS Date: 3/7/2014

LM Start	<b>3.34</b>	Rating **	M	Issue No.	<b>34 (cont)</b>
LM End	<b>3.34</b>	Issue Type +	Ma	Location *	

Photo 2 of 3 : UCIP\_FA\_2017\_31864\_58068.jpg



LS view: U type concrete headwall and CMP on levee slope. Soil/mud on inlet box.

Photo 3 of 3 : UCIP\_FA\_2017\_31864\_58067.jpg



LS view: inside view of CMP on levee slope. Needs cleaning and clearing.

<b>* Location</b> LS : Land Side    N/A : Not Applicable WS : Water Side CR : Crown		<b>** Rating</b> A : Acceptable M : Minimally Acceptable U : Unacceptable		N : Not Inspected/Rated C : Corrected A/W : Acceptable but Monitor & Maintain		<b>+ Issue Type</b> Ma : Maintenance Deficiency Ob : Design & System Obsolescence En : Enforcement	
--	--	--	--	---	--	---	--



**Flood Control Project Maintenance  
Levee Inspections**

**Maintenance Issue Types Only, Levee Inspection Report By Mile - Fall 2017**

**Butte County Department of Public Works**

Waterway	Bank	Unit Miles	Inspection Start/End	Inspector
Unit No. 03 Sycamore and Sheep Hollow Creeks	Right	4.05	10/11/2017 10/11/2017	Bob Duffey

LM Start	3.38	Rating **	M	Issue No.	14
LM End	3.38	Issue Type +	Ma	Location *	LS
Category	Earthen Levee			GPS Latitude/Longitude	
				Start	End
Item	Vegetation			39.777429 °	39.777429 °
				-121.848937 °	-121.848937 °
DWR ID	DWR_NA0003_03_f_2016_14				
Comment Code					
V2 : Remove the wild growth other than native grasses from the levee slopes.					
Inspector Comment					

Photo 1 of 1 : FA\_2017\_NA0003\_67\_14\_20170911\_00003.jpg



View of a bush along the landside toe.

LM Start	3.50	Rating **	M	Issue No.	35	
LM End	3.50	Issue Type +	Ma	Location *		
Category	Supplemental			GPS Latitude/Longitude		
				Start	End	
Item	DWR UCIP LMA Responsibility			39.777139 °	39.777139 °	
				-121.846769 °	-121.846769 °	
DWR ID						
Comment Code						
Inspector Comment						
FS_ID:31856						
DS_ID:19272						
EP_NO: N/A						
Repair Type: Non-Urgent						
Crossing Status: Found						
UCIP Comments: Needs cleaning and clearing the culvert.						
FIELD_STRUCT_DESC: 24-inch CM pipe through the levee, 9.5 feet below the crown. Flap gate on the waterward end. Concrete "U" headwalls on both ends. Grouted riprap apron on the landward end. Grouted riprap spillway on the waterward end. O&M Manual Sac 504, May 1965.						
FS Date: 3/7/2014						

Photo 1 of 3 : UCIP\_FA\_2017\_31856\_58053.jpg



WS view: U type concrete headwall, pipe, and flapgate on levee slope.  
Soil/mud on outlet box.

<b>* Location</b> LS : Land Side    N/A : Not Applicable WS : Water Side CR : Crown		<b>** Rating</b> A : Acceptable M : Minimally Acceptable U : Unacceptable N : Not Inspected/Rated C : Corrected A/W : Acceptable but Monitor & Maintain		<b>+ Issue Type</b> Ma : Maintenance Deficiency Ob : Design & System Obsolescence En : Enforcement
--	--	---	--	---

**Flood Control Project Maintenance  
Levee Inspections**

**Maintenance Issue Types Only, Levee Inspection Report By Mile - Fall 2017**

**Butte County Department of Public Works**

Waterway	Bank	Unit Miles	Inspection Start/End	Inspector
Unit No. 03 Sycamore and Sheep Hollow Creeks	Right	4.05	10/11/2017 10/11/2017	Bob Duffey

LM Start	3.50	Rating **	M	Issue No.	35 (cont)	
LM End	3.50	Issue Type +	Ma	Location *		
Category	Supplemental			GPS Latitude/Longitude		
				Start	End	
Item	DWR UCIP LMA Responsibility			39.777139 °	39.777139 °	
				-121.846769 °	-121.846769 °	
DWR ID						
Comment Code						
Inspector Comment						
FS_ID:31856						
DS_ID:19272						
EP_NO: N/A						
Repair Type: Non-Urgent						
Crossing Status: Found						
UCIP Comments: Needs cleaning and clearing the culvert.						
FIELD_STRUCT_DESC: 24-inch CM pipe through the levee, 9.5 feet below the crown. Flap gate on the waterward end. Concrete "U" headwalls on both ends. Grouted riprap apron on the landward end. Grouted riprap spillway on the waterward end. O&M Manual Sac 504, May 1965.						
FS Date: 3/7/2014						

Photo 2 of 3 : UCIP\_FA\_2017\_31856\_58052.jpg



LS view: U type concrete headwall and CMP on levee slope. Soil/mud on inlet box.

LM Start	<b>3.50</b>	Rating **	M	Issue No.	<b>35 (cont)</b>
LM End	<b>3.50</b>	Issue Type +	Ma	Location *	

Photo 3 of 3 : UCIP\_FA\_2017\_31856\_58051.jpg



LS view: inside view of CMP on levee slope. Needs cleaning and clearing.

<b>* Location</b> LS : Land Side    N/A : Not Applicable WS : Water Side CR : Crown	<b>** Rating</b> A : Acceptable M : Minimally Acceptable U : Unacceptable	N : Not Inspected/Rated C : Corrected A/W : Acceptable but Monitor & Maintain	<b>+ Issue Type</b> Ma : Maintenance Deficiency Ob : Design & System Obsolescence En : Enforcement
--	--	---	---

**Flood Control Project Maintenance  
Levee Inspections**

**Maintenance Issue Types Only, Levee Inspection Report By Mile - Fall 2017**

**Butte County Department of Public Works**

Waterway	Bank	Unit Miles	Inspection Start/End	Inspector
Unit No. 03 Sycamore and Sheep Hollow Creeks	Right	4.05	10/11/2017 10/11/2017	Bob Duffey

LM Start	3.68	Rating **	M	Issue No.	37
LM End	3.68	Issue Type +	Ma	Location *	
Category	Supplemental			GPS Latitude/Longitude	
				Start	End
Item	DWR UCIP LMA Responsibility			39.777662 °	39.777662 °
				-121.843489 °	-121.843489 °
DWR ID					
Comment Code					
Inspector Comment					
FS_ID:32125 DS_ID:19275 EP_NO: N/A Repair Type: Non-Urgent Crossing Status: Found UCIP Comments: The culvert was working during the field visit.Needs cleaning and clearing on both ends of the pipe. FIELD_STRUCT_DESC: 24-inch CM pipe through the levee, 7.5 feet below the crown. Flap gate on the waterward end. Concrete "U" headwalls on both ends. Grouted riprap apron on the landward end. Grouted riprap spillway on the waterward end. O&M Manual Sac 504, May 1965. FS Date: 3/4/2014					

Photo 1 of 2 : UCIP\_FA\_2017\_32125\_58629.jpg



WS view: U type concrete headwall, pipe, and flapgate on levee slope. Soil/mud on outlet box. Vegetation debris blocking outlet box.

LM Start	<b>3.68</b>	Rating **	M	Issue No.	<b>37 (cont)</b>
LM End	<b>3.68</b>	Issue Type +	Ma	Location *	

Photo 2 of 2 : UCIP\_FA\_2017\_32125\_58628.jpg



LS view: U type concrete headwall and pipe on levee slope. Soil/mud on inlet box. Vegetation debris blocking inlet box.

<b>* Location</b> LS : Land Side    N/A : Not Applicable WS : Water Side CR : Crown		<b>** Rating</b> A : Acceptable M : Minimally Acceptable U : Unacceptable N : Not Inspected/Rated C : Corrected A/W : Acceptable but Monitor & Maintain		<b>+ Issue Type</b> Ma : Maintenance Deficiency Ob : Design & System Obsolescence En : Enforcement
--	--	---	--	---



**Flood Control Project Maintenance  
Levee Inspections**

**Maintenance Issue Types Only, Levee Inspection Report By Mile - Fall 2017**

**Butte County Department of Public Works**

Waterway	Bank	Unit Miles	Inspection Start/End	Inspector
Unit No. 04 Sycamore and Dry Creeks	Right	2.86	10/11/2017 10/11/2017	Bob Duffey

LM Start	0.16	Rating **	M	Issue No.	20
LM End	0.16	Issue Type +	Ma	Location *	LS
Category	Earthen Levee			GPS Latitude/Longitude	
				Start	End
Item	Vegetation			39.776526 °	39.776526 °
				-121.848727 °	-121.848727 °
DWR ID	DWR_NA0003_04_f_2016_20				
Comment Code					
V2 : Remove the wild growth other than native grasses from the levee slopes.					
Inspector Comment					

Photo 1 of 1 : FA\_2017\_NA0003\_68\_20\_20170911\_00006.jpg



View of the vegetation along the landside toe blocking visibility.

LM Start	0.27	Rating **	M	Issue No.	25
LM End	0.27	Issue Type +	Ma	Location *	
Category	Supplemental			GPS Latitude/Longitude	
				Start	End
Item	DWR UCIP LMA Responsibility			39.776554 °	39.776554 °
				-121.850730 °	-121.850730 °
DWR ID					
Comment Code					
Inspector Comment					
FS_ID:32026					
DS_ID:19279					
EP_NO: N/A					
Repair Type: Non-Urgent					
Crossing Status: Found					
UCIP Comments: Needs cleaning and clearing the culvert.					
FIELD_STRUCT_DESC: 24-inch CM pipe through the levee, 10.0 feet below the crown. Flap gate on the waterward end. Concrete "U" headwalls on both ends. Grouted riprap apron on the landward end. Grouted riprap spillway on the waterward end. O&M Manual Sac 504, May 1965.					
FS Date: 3/7/2014					

Photo 1 of 3 : UCIP\_FA\_2017\_32026\_58520.jpg



WS view: concrete headwall and grouted riprap spillway on levee slope.

<b>* Location</b> LS : Land Side    N/A : Not Applicable WS : Water Side CR : Crown		<b>** Rating</b> A : Acceptable M : Minimally Acceptable U : Unacceptable N : Not Inspected/Rated C : Corrected A/W : Acceptable but Monitor & Maintain		<b>+ Issue Type</b> Ma : Maintenance Deficiency Ob : Design & System Obsolescence En : Enforcement
--	--	---	--	---

**Flood Control Project Maintenance  
Levee Inspections**

**Maintenance Issue Types Only, Levee Inspection Report By Mile - Fall 2017**

**Butte County Department of Public Works**

Waterway	Bank	Unit Miles	Inspection Start/End	Inspector
Unit No. 04 Sycamore and Dry Creeks	Right	2.86	10/11/2017 10/11/2017	Bob Duffey

LM Start	0.27	Rating **	M	Issue No.	25 (cont)	
LM End	0.27	Issue Type +	Ma	Location *		
Category	Supplemental			GPS Latitude/Longitude		
				Start	End	
Item	DWR UCIP LMA Responsibility			39.776554 °	39.776554 °	
				-121.850730 °	-121.850730 °	
DWR ID						
Comment Code						
Inspector Comment						
FS_ID:32026						
DS_ID:19279						
EP_NO: N/A						
Repair Type: Non-Urgent						
Crossing Status: Found						
UCIP Comments: Needs cleaning and clearing the culvert.						
FIELD_STRUCT_DESC: 24-inch CM pipe through the levee, 10.0 feet below the crown. Flap gate on the waterward end. Concrete "U" headwalls on both ends. Grouted riprap apron on the landward end. Grouted riprap spillway on the waterward end. O&M Manual Sac 504, May 1965.						
FS Date: 3/7/2014						

Photo 2 of 3 : UCIP\_FA\_2017\_32026\_58519.jpg



WS view: U type concrete headwall and CMP on levee slope. Mud and vegetation debris on outlet box.

LM Start	<b>0.27</b>	Rating **	M	Issue No.	<b>25 (cont)</b>
LM End	<b>0.27</b>	Issue Type +	Ma	Location *	

Photo 3 of 3 : UCIP\_FA\_2017\_32026\_58518.jpg



LS view: U type concrete headwall and CMP on levee slope. Mud and pebbles on inlet box.

<b>* Location</b> LS : Land Side    N/A : Not Applicable WS : Water Side CR : Crown		<b>** Rating</b> A : Acceptable M : Minimally Acceptable U : Unacceptable		N : Not Inspected/Rated C : Corrected A/W : Acceptable but Monitor & Maintain		<b>+ Issue Type</b> Ma : Maintenance Deficiency Ob : Design & System Obsolescence En : Enforcement	
--	--	--	--	---	--	---	--

**Flood Control Project Maintenance  
Levee Inspections**

**Maintenance Issue Types Only, Levee Inspection Report By Mile - Fall 2017**

**Butte County Department of Public Works**

Waterway	Bank	Unit Miles	Inspection Start/End	Inspector
Unit No. 04 Sycamore and Dry Creeks	Right	2.86	10/11/2017 10/11/2017	Bob Duffey

LM Start	0.33	Rating **	M	Issue No.	26
LM End	0.33	Issue Type +	Ma	Location *	
Category	Supplemental			GPS Latitude/Longitude	
				Start	End
Item	DWR UCIP LMA Responsibility			39.775926 °	39.775926 °
				-121.850647 °	-121.850647 °
DWR ID					
Comment Code					
Inspector Comment					
FS_ID:32025					
DS_ID:19280					
EP_NO: N/A					
Repair Type: Non-Urgent					
Crossing Status: Found					
UCIP Comments: Slide gate in a CMP riser. Vegetation debris and mud on inlet box.Needs cleaning and clearing the culvert.					
FIELD_STRUCT_DESC: 24-inch CM pipe through the levee and under the channel, 9.5 feet below the crown. Slide gate in CM pipe riser on the waterward slope. Concrete "U" headwall on the landward end. O&M Manual Sac 504, May 1965.					
FS Date: 3/7/2014					

LM Start	<b>0.33</b>	Rating **	M	Issue No.	<b>26 (cont)</b>
LM End	<b>0.33</b>	Issue Type +	Ma	Location *	

Photo 1 of 3 : UCIP\_FA\_2017\_32025\_58512.jpg



WS view: slide gate in CMP riser on waterside shoulder.

Photo 2 of 3 : UCIP\_FA\_2017\_32025\_58511.jpg



WS view: inside view of slide gate in CMP riser on waterside shoulder.  
Debris trapped in the riser.

<b>* Location</b> LS : Land Side    N/A : Not Applicable WS : Water Side CR : Crown	<b>** Rating</b> A : Acceptable M : Minimally Acceptable U : Unacceptable	N : Not Inspected/Rated C : Corrected A/W : Acceptable but Monitor & Maintain	<b>+ Issue Type</b> Ma : Maintenance Deficiency Ob : Design & System Obsolescence En : Enforcement
--	--	---	---



**Flood Control Project Maintenance  
Levee Inspections**

## Maintenance Issue Types Only, Levee Inspection Report By Mile - Fall 2017

### Butte County Department of Public Works

Waterway	Bank	Unit Miles	Inspection Start/End	Inspector
Unit No. 04 Sycamore and Dry Creeks	Right	2.86	10/11/2017 10/11/2017	Bob Duffey

LM Start	0.33	Rating **	M	Issue No.	26 (cont)	
LM End	0.33	Issue Type +	Ma	Location *		
Category	Supplemental			GPS Latitude/Longitude		
				Start		End
Item	DWR UCIP LMA Responsibility			39.775926 °		39.775926 °
				-121.850647 °		-121.850647 °
DWR ID						
Comment Code						
Inspector Comment						
FS_ID:32025 DS_ID:19280 EP_NO: N/A Repair Type: Non-Urgent Crossing Status: Found UCIP Comments: Slide gate in a CMP riser. Vegetation debris and mud on inlet box.Needs cleaning and clearing the culvert. FIELD_STRUCT_DESC: 24-inch CM pipe through the levee and under the channel, 9.5 feet below the crown. Slide gate in CM pipe riser on the waterward slope. Concrete "U" headwall on the landward end. O&M Manual Sac 504, May 1965. FS Date: 3/7/2014						

Photo 3 of 3 : UCIP\_FA\_2017\_32025\_58510.jpg



LS view: U type concrete headwall and CMP on levee slope. Vegetation debris and mud on inlet box.

LM Start	0.35	Rating **	M	Issue No.	27
LM End	0.35	Issue Type +	Ma	Location *	
Category	Supplemental			GPS Latitude/Longitude	
				Start	End
Item	DWR UCIP LMA Responsibility			39.775682 °	39.775682 °
				-121.850375 °	-121.850375 °
DWR ID					
Comment Code					
Inspector Comment					
FS_ID:32023					
DS_ID:19281					
EP_NO: N/A					
Repair Type: Non-Urgent					
Crossing Status: Found					
UCIP Comments: Needs cleaning and clearing the culvert.					
FIELD_STRUCT_DESC: 24-inch CM pipe through the levee, 8.0 feet below the crown. Flap gate on the waterward end. Concrete "U" headwall on both ends. Grouted riprap apron on the landward end. Grouted riprap spillway on the waterward end. O&M Manual Sac 504, May 1965.					
FS Date: 3/7/2014					

Photo 1 of 3 : UCIP\_FA\_2017\_32023\_58505.jpg



WS view: U type concrete headwall and CMP on levee slope. Vegetation debris and mud on outlet box. Needs cleaning and clearing.

<b>* Location</b> LS : Land Side    N/A : Not Applicable WS : Water Side CR : Crown		<b>** Rating</b> A : Acceptable M : Minimally Acceptable U : Unacceptable N : Not Inspected/Rated C : Corrected A/W : Acceptable but Monitor & Maintain		<b>+ Issue Type</b> Ma : Maintenance Deficiency Ob : Design & System Obsolescence En : Enforcement
--	--	---	--	---

**Flood Control Project Maintenance  
Levee Inspections**

**Maintenance Issue Types Only, Levee Inspection Report By Mile - Fall 2017**

**Butte County Department of Public Works**

Waterway	Bank	Unit Miles	Inspection Start/End	Inspector
Unit No. 04 Sycamore and Dry Creeks	Right	2.86	10/11/2017 10/11/2017	Bob Duffey

LM Start	0.35	Rating **	M	Issue No.	27 (cont)	
LM End	0.35	Issue Type +	Ma	Location *		
Category	Supplemental			GPS Latitude/Longitude		
				Start	End	
Item	DWR UCIP LMA Responsibility			39.775682 °	39.775682 °	
				-121.850375 °	-121.850375 °	
DWR ID						
Comment Code						
Inspector Comment						
FS_ID:32023						
DS_ID:19281						
EP_NO: N/A						
Repair Type: Non-Urgent						
Crossing Status: Found						
UCIP Comments: Needs cleaning and clearing the culvert.						
FIELD_STRUCT_DESC: 24-inch CM pipe through the levee, 8.0 feet below the crown. Flap gate on the waterward end. Concrete "U" headwall on both ends. Grouted riprap apron on the landward end. Grouted riprap spillway on the waterward end. O&M Manual Sac 504, May 1965.						
FS Date: 3/7/2014						

LM Start	<b>0.35</b>	Rating **	M	Issue No.	<b>27 (cont)</b>
LM End	<b>0.35</b>	Issue Type +	Ma	Location *	

Photo 2 of 3 : UCIP\_FA\_2017\_32023\_58504.jpg



LS view: U type concrete headwall and CMP on levee slope. Pebbles and mud on inlet box.

Photo 3 of 3 : UCIP\_FA\_2017\_32023\_58503.jpg




LS view: inside view of the CM pipe. Needs cleaning and clearing the pipe.

<b>* Location</b> LS : Land Side    N/A : Not Applicable WS : Water Side CR : Crown		<b>** Rating</b> A : Acceptable M : Minimally Acceptable U : Unacceptable		N : Not Inspected/Rated C : Corrected A/W : Acceptable but Monitor & Maintain		<b>+ Issue Type</b> Ma : Maintenance Deficiency Ob : Design & System Obsolescence En : Enforcement	
--	--	--	--	---	--	---	--

## Maintenance Issue Types Only, Levee Inspection Report By Mile - Fall 2017

Waterway	Bank	Unit Miles	Inspection Start/End	Inspector
Unit No. 04 Sycamore and Dry Creeks	Right	2.86	10/11/2017 10/11/2017	Bob Duffey


Photo 1 of 1 : FA\_2017\_NA0003\_68\_21\_20170911\_00007.jpg



10/19/2016

View of the overgrown trees along the landside toe.

Photo 1 of 1 : FA\_2017\_NA0003\_68\_22\_20170911\_00008.jpg



10/13/2015

View of the blackberries blocking visibility and access.

Page 6 of 16



**Flood Control Project Maintenance  
Levee Inspections**

**Maintenance Issue Types Only, Levee Inspection Report By Mile - Fall 2017**

**Butte County Department of Public Works**

Waterway	Bank	Unit Miles	Inspection Start/End	Inspector
Unit No. 04 Sycamore and Dry Creeks	Right	2.86	10/11/2017 10/11/2017	Bob Duffey

LM Start	0.92	Rating **	M	Issue No.	28
LM End	0.92	Issue Type +	Ma	Location *	
Category	Supplemental			GPS Latitude/Longitude	
				Start	End
Item	DWR UCIP LMA Responsibility			39.775704 °	39.775704 °
				-121.850901 °	-121.850901 °
DWR ID					
Comment Code					
Inspector Comment					
FS_ID:32143					
DS_ID:19287					
EP_NO: N/A					
Repair Type: Non-Urgent					
Crossing Status: Found					
UCIP Comments: Needs cleaning and clearing the culvert.					
FIELD_STRUCT_DESC: 24-inch CM pipe through the levee, 9.0 feet below the crown. Flap gate on the waterward end. Concrete "U" headwalls on both ends. Grouted riprap apron on the landward end. Grouted riprap spillway on the waterward end. O&M Manual Sac 504, May 1965.					
FS Date: 3/7/2014					

Photo 1 of 2 : UCIP\_FA\_2017\_32143\_58641.jpg



WS view: U type concrete headwall and CMP on levee slope. Soil/mud on outlet box. Needs cleaning and clearing.

LM Start	<b>0.92</b>	Rating **	M	Issue No.	<b>28 (cont)</b>
LM End	<b>0.92</b>	Issue Type +	Ma	Location *	

Photo 2 of 2 : UCIP\_FA\_2017\_32143\_58640.jpg



LS view: U type concrete headwall and CMP on levee slope. Vegetation and mud on inlet box.

<b>* Location</b> LS : Land Side    N/A : Not Applicable WS : Water Side CR : Crown	<b>** Rating</b> A : Acceptable M : Minimally Acceptable U : Unacceptable	N : Not Inspected/Rated C : Corrected A/W : Acceptable but Monitor & Maintain	<b>+ Issue Type</b> Ma : Maintenance Deficiency Ob : Design & System Obsolescence En : Enforcement
--	--	---	---

**Flood Control Project Maintenance  
Levee Inspections**

**Maintenance Issue Types Only, Levee Inspection Report By Mile - Fall 2017**

**Butte County Department of Public Works**

Waterway	Bank	Unit Miles	Inspection Start/End	Inspector
Unit No. 04 Sycamore and Dry Creeks	Right	2.86	10/11/2017 10/11/2017	Bob Duffey

LM Start	0.94	Rating **	M	Issue No.	30
LM End	0.94	Issue Type +	Ma	Location *	
Category	Supplemental			GPS Latitude/Longitude	
				Start	End
Item	DWR UCIP LMA Responsibility			39.775899 °	39.775899 °
				-121.851124 °	-121.851124 °
DWR ID					
Comment Code					
Inspector Comment					
FS_ID:32144					
DS_ID:19288					
EP_NO: N/A					
Repair Type: Non-Urgent					
Crossing Status: Found					
UCIP Comments: Slide gate in CMP riser on waterside. No access to CMP riser.Needs cleaning and clearing the culvert.					
FIELD_STRUCT_DESC: 24-inch CM pipe through the levee and under the channel, 9.5 feet below the crown. Slide gate in pipe riser on the waterward slope. Concrete "U" headwall on the landward end. O&M Manual Sac 504, May 1965.					
FS Date: 3/7/2014					

LM Start	<b>0.94</b>	Rating **	M	Issue No.	<b>30 (cont)</b>
LM End	<b>0.94</b>	Issue Type +	Ma	Location *	

Photo 1 of 3 : UCIP\_FA\_2017\_32144\_58644.jpg



LS view: U type concrete headwall of CMP culvert on levee slope. Vegetation debris and mud on inlet box.

Photo 2 of 3 : UCIP\_FA\_2017\_32144\_58643.jpg



LS view: close view of vegetation debris and mud on inlet box.

<b>* Location</b> LS : Land Side    N/A : Not Applicable WS : Water Side CR : Crown		<b>** Rating</b> A : Acceptable M : Minimally Acceptable U : Unacceptable		N : Not Inspected/Rated C : Corrected A/W : Acceptable but Monitor & Maintain		<b>+ Issue Type</b> Ma : Maintenance Deficiency Ob : Design & System Obsolescence En : Enforcement	
--	--	--	--	---	--	---	--

**Flood Control Project Maintenance  
Levee Inspections**

## Maintenance Issue Types Only, Levee Inspection Report By Mile - Fall 2017

### Butte County Department of Public Works

Waterway	Bank	Unit Miles	Inspection Start/End	Inspector
Unit No. 04 Sycamore and Dry Creeks	Right	2.86	10/11/2017 10/11/2017	Bob Duffey

LM Start	0.94	Rating **	M	Issue No.	30 (cont)	
LM End	0.94	Issue Type +	Ma	Location *		
Category	Supplemental			GPS Latitude/Longitude		
				Start	End	
Item	DWR UCIP LMA Responsibility			39.775899°	39.775899°	
				-121.851124°	-121.851124°	
DWR ID						
Comment Code						
Inspector Comment						
FS_ID:32144						
DS_ID:19288						
EP_NO: N/A						
Repair Type: Non-Urgent						
Crossing Status: Found						
UCIP Comments: Slide gate in CMP riser on waterside. No access to CMP riser.Needs cleaning and clearing the culvert.						
FIELD_STRUCT_DESC: 24-inch CM pipe through the levee and under the channel, 9.5 feet below the crown. Slide gate in pipe riser on the waterward slope. Concrete "U" headwall on the landward end. O&M Manual Sac 504, May 1965.						
FS Date: 3/7/2014						

Photo 3 of 3 : UCIP\_FA\_2017\_32144\_58642.jpg



WS view: slide gate in CMP riser on waterside. No access to CMP riser.

LM Start	1.04	Rating **	M	Issue No.	23
LM End	1.04	Issue Type +	Ma	Location *	LS
Category	Earthen Levee			GPS Latitude/Longitude	
				Start	End
Item	Vegetation			39.776589 °	39.776589 °
				-121.852600 °	-121.852600 °
DWR ID	DWR_NA0003_04_f_2016_23				
Comment Code					
V2 : Remove the wild growth other than native grasses from the levee slopes.					
Inspector Comment					

Photo 1 of 1 : FA\_2017\_NA0003\_68\_23\_20170911\_00009.jpg



View of the blackberries blocking visibility and access.

<b>* Location</b> LS : Land Side    N/A : Not Applicable WS : Water Side CR : Crown	<b>** Rating</b> A : Acceptable M : Minimally Acceptable U : Unacceptable	N : Not Inspected/Rated C : Corrected A/W : Acceptable but Monitor & Maintain	<b>+ Issue Type</b> Ma : Maintenance Deficiency Ob : Design & System Obsolescence En : Enforcement
--	--	---	---



**Flood Control Project Maintenance  
Levee Inspections**

**Maintenance Issue Types Only, Levee Inspection Report By Mile - Fall 2017**

**Butte County Department of Public Works**

Waterway	Bank	Unit Miles	Inspection Start/End	Inspector
Unit No. 04 Sycamore and Dry Creeks	Right	2.86	10/11/2017 10/11/2017	Bob Duffey

LM Start	1.11	Rating **	M	Issue No.	31
LM End	1.11	Issue Type +	Ma	Location *	
Category	Supplemental			GPS Latitude/Longitude	
				Start	End
Item	DWR UCIP LMA Responsibility			39.776709 °	39.776709 °
				-121.853932 °	-121.853932 °
DWR ID					

**Comment Code**

**Inspector Comment**

FS\_ID:31963  
DS\_ID:19289  
EP\_NO: N/A  
Repair Type: Non-Urgent  
Crossing Status: Found  
UCIP Comments: Needs cleaning and clearing the culvert.  
FIELD\_STRUCT\_DESC: 24-inch CM pipe through the levee, 11.0 feet below the flap gate on the waterward end. Concrete "U" headwalls on both ends. Grouted riprap apron on the landward end. Grouted riprap spillway on the waterward end. O&M Manual Sac 504, May 1965.  
FS Date: 3/7/2014

LM Start	1.11	Rating **	M	Issue No.	31 (cont)
LM End	1.11	Issue Type +	Ma	Location *	

Photo 1 of 3 : UCIP\_FA\_2017\_31963\_58384.jpg



WS view: U type concrete headwall and CMP on levee slope. Vegetation debris and mud on outlet box. Needs cleaning and clearing.

Photo 2 of 3 : UCIP\_FA\_2017\_31963\_58383.jpg



LS view: U type concrete headwall and CMP on levee slope. Vegetation debris and mud on inlet box.

<b>* Location</b> LS : Land Side    N/A : Not Applicable WS : Water Side CR : Crown		<b>** Rating</b> A : Acceptable                      N : Not Inspected/Rated M : Minimally Acceptable        C : Corrected U : Unacceptable                  A/W : Acceptable but Monitor & Maintain		<b>+ Issue Type</b> Ma : Maintenance Deficiency Ob : Design & System Obsolescence En : Enforcement
--	--	---	--	---

**Flood Control Project Maintenance  
Levee Inspections**

**Maintenance Issue Types Only, Levee Inspection Report By Mile - Fall 2017**

**Butte County Department of Public Works**

Waterway	Bank	Unit Miles	Inspection Start/End	Inspector
Unit No. 04 Sycamore and Dry Creeks	Right	2.86	10/11/2017 10/11/2017	Bob Duffey

LM Start	1.11	Rating **	M	Issue No.	31 (cont)	
LM End	1.11	Issue Type +	Ma	Location *		
Category	Supplemental			GPS Latitude/Longitude		
				Start	End	
Item	DWR UCIP LMA Responsibility			39.776709 °	39.776709 °	
				-121.853932 °	-121.853932 °	
DWR ID						
Comment Code						
Inspector Comment						
FS_ID:31963 DS_ID:19289 EP_NO: N/A Repair Type: Non-Urgent Crossing Status: Found UCIP Comments: Needs cleaning and clearing the culvert. FIELD_STRUCT_DESC: 24-inch CM pipe through the levee, 11.0 feet below the flap gate on the waterward end. Concrete "U" headwalls on both ends. Grouted riprap apron on the landward end. Grouted riprap spillway on the waterward end. O&M Manual Sac 504, May 1965. FS Date: 3/7/2014						

Photo 3 of 3 : UCIP\_FA\_2017\_31963\_58385.jpg



LS view: inside view of CMP on levee slope. Needs cleaning and clearing.

LM Start	1.16	Rating **	M	Issue No.	17
LM End	1.22	Issue Type +	Ma	Location *	LS
Category	Earthen Levee			GPS Latitude/Longitude	
				Start	End
Item	Trim / Thin Trees			39.777128 °	39.777580 °
				-121.854763 °	-121.855612 °
DWR ID	DWR_NA0003_04_f_2015_17				
Comment Code					
T1 : Trim trees to at least five feet above ground level.					
Inspector Comment					
Remove the trees that are overhanging the levee slope.					

Photo 1 of 1 : FA\_2017\_NA0003\_68\_17\_20170911\_00004.jpg



View of the trees overhanging the levee slope.

\* Location  
 LS : Land Side    N/A : Not Applicable  
 WS : Water Side  
 CR : Crown

\*\* Rating  
 A : Acceptable  
 M : Minimally Acceptable  
 U : Unacceptable  
 N : Not Inspected/Rated  
 C : Corrected  
 A/W : Acceptable but Monitor & Maintain

+ Issue Type  
 Ma : Maintenance Deficiency  
 Ob : Design & System Obsolescence  
 En : Enforcement

**Flood Control Project Maintenance  
Levee Inspections**

**Maintenance Issue Types Only, Levee Inspection Report By Mile - Fall 2017**

**Butte County Department of Public Works**

Waterway	Bank	Unit Miles	Inspection Start/End	Inspector
Unit No. 04 Sycamore and Dry Creeks	Right	2.86	10/11/2017 10/11/2017	Bob Duffey

LM Start	1.35	Rating **	M	Issue No.	32	
LM End	1.35	Issue Type +	Ma	Location *		
Category	Supplemental			GPS Latitude/Longitude		
				Start	End	
Item	DWR UCIP LMA Responsibility			39.778370 °	39.778370 °	
				-121.857904 °	-121.857904 °	
DWR ID						
Comment Code						
Inspector Comment						
FS_ID:31964						
DS_ID:19290						
EP_NO: N/A						
Repair Type: Non-Urgent						
Crossing Status: Found						
UCIP Comments: Needs cleaning and clearing the culvert.						
FIELD_STRUCT_DESC: 24-inch CM pipe through the levee, 13.0 feet below the crown. Flap gate on the waterward end. Concrete "U" headwalls on both ends. Grouted riprap apron on the landward end. Grouted riprap spillway on the waterward end. O&M Manual Sac 504, May 1965.						
FS Date: 3/7/2014						

Photo 1 of 2 : UCIP\_FA\_2017\_31964\_58389.jpg



WS view: U type concrete headwall and CMP on levee slope. Vegetation debris and mud in outlet box. Needs cleaning and clearing.

LM Start	1.35	Rating **	M	Issue No.	32 (cont)
LM End	1.35	Issue Type +	Ma	Location *	

Photo 2 of 2 : UCIP\_FA\_2017\_31964\_58388.jpg



LS view: U type concrete headwall and CMP on levee slope. Vegetation debris and mud in inlet box.

<b>* Location</b> LS : Land Side    N/A : Not Applicable WS : Water Side CR : Crown		<b>** Rating</b> A : Acceptable M : Minimally Acceptable U : Unacceptable		N : Not Inspected/Rated C : Corrected A/W : Acceptable but Monitor & Maintain		<b>+ Issue Type</b> Ma : Maintenance Deficiency Ob : Design & System Obsolescence En : Enforcement	
--	--	--	--	---	--	---	--



**Flood Control Project Maintenance  
Levee Inspections**

**Maintenance Issue Types Only, Levee Inspection Report By Mile - Fall 2017**

**Butte County Department of Public Works**

Waterway	Bank	Unit Miles	Inspection Start/End	Inspector
Unit No. 04 Sycamore and Dry Creeks	Right	2.86	10/11/2017 10/11/2017	Bob Duffey

LM Start	1.61	Rating **	A	Issue No.	16	
LM End	1.61	Issue Type +	Ma	Location *	LS	
Category	Earthen Levee			GPS Latitude/Longitude		
				Start		End
Item	Vegetation			39.778763 °		39.778763 °
				-121.862702 °		-121.862702 °
DWR ID	DWR_NA0003_04_f_2017_16					
Comment Code						
V1 : Control annual grass and weeds on the levee slopes and easements.						
Inspector Comment						
There is no vegetation on either slope.						

Photo 1 of 1 : FA\_2017\_NA0003\_68\_16\_20171019\_00063.jpg



View of no vegetation on both slopes.

LM Start	2.04	Rating **	U	Issue No.	18
LM End	2.08	Issue Type +	Ma	Location *	LS
Category	Earthen Levee			GPS Latitude/Longitude	
				Start	End
Item	Trim / Thin Trees			39.781669 °	39.782025 °
				-121.869804 °	-121.870252 °
DWR ID	DWR_NA0003_04_s_2016_18				
Comment Code					
T2 : Thin trees to allow visibility of the ground and room to flood fight.					
Inspector Comment					
Trees and shrubbery obscure visibility on landside toe hinge point.					

Photo 1 of 1 : FA\_2017\_NA0003\_68\_18\_20170911\_00005.jpg



View of the vegetation on fence at landside toe.

\* Location  
LS : Land Side    N/A : Not Applicable  
WS : Water Side  
CR : Crown

\*\* Rating  
A : Acceptable  
M : Minimally Acceptable  
U : Unacceptable  
N : Not Inspected/Rated  
C : Corrected  
A/W : Acceptable but Monitor & Maintain

+ Issue Type  
Ma : Maintenance Deficiency  
Ob : Design & System Obsolescence  
En : Enforcement

**Flood Control Project Maintenance  
Levee Inspections**

**Maintenance Issue Types Only, Levee Inspection Report By Mile - Fall 2017**

**Butte County Department of Public Works**

Waterway	Bank	Unit Miles	Inspection Start/End	Inspector
Unit No. 04 Sycamore and Dry Creeks	Right	2.86	10/11/2017 10/11/2017	Bob Duffey

LM Start	2.15	Rating **	M	Issue No.	33
LM End	2.15	Issue Type +	Ma	Location *	
Category	Supplemental			GPS Latitude/Longitude	
				Start	End
Item	DWR UCIP LMA Responsibility			39.782777 °	39.782777 °
				-121.871179 °	-121.871179 °
DWR ID					
Comment Code					
Inspector Comment					
FS_ID:31965 DS_ID:19291 EP_NO: N/A Repair Type: Non-Urgent Crossing Status: Found UCIP Comments: Needs cleaning and clearing the culvert. FIELD_STRUCT_DESC: 24-inch CM pipe through the levee, 11.0 feet below the crown. Flap gate on the waterward end. Concrete "U" headwall on both ends. Grouted riprap apron on the landward end. Grouted riprap spillway on the waterward end. O&M Manual Sac 504, May 1965. FS Date: 3/7/2014					

Photo 1 of 3 : UCIP\_FA\_2017\_31965\_58395.jpg



WS view: U type concrete headwall and CMP on levee slope. Vegetation debris and mud in outlet box. Needs cleaning and clearing.

LM Start	<b>2.15</b>	Rating **	M	Issue No.	<b>33 (cont)</b>
LM End	<b>2.15</b>	Issue Type +	Ma	Location *	

Photo 2 of 3 : UCIP\_FA\_2017\_31965\_58394.jpg



LS view: U type concrete headwall and CMP on levee slope. Vegetation debris and mud in inlet box.

<b>* Location</b> LS : Land Side    N/A : Not Applicable WS : Water Side CR : Crown		<b>** Rating</b> A : Acceptable M : Minimally Acceptable U : Unacceptable		N : Not Inspected/Rated C : Corrected A/W : Acceptable but Monitor & Maintain		<b>+ Issue Type</b> Ma : Maintenance Deficiency Ob : Design & System Obsolescence En : Enforcement	
--	--	--	--	---	--	---	--

**Flood Control Project Maintenance  
Levee Inspections**

**Maintenance Issue Types Only, Levee Inspection Report By Mile - Fall 2017**

**Butte County Department of Public Works**

Waterway	Bank	Unit Miles	Inspection Start/End	Inspector
Unit No. 04 Sycamore and Dry Creeks	Right	2.86	10/11/2017 10/11/2017	Bob Duffey

LM Start	2.15	Rating **	M	Issue No.	33 (cont)	
LM End	2.15	Issue Type +	Ma	Location *		
Category	Supplemental			GPS Latitude/Longitude		
				Start	End	
Item	DWR UCIP LMA Responsibility			39.782777 °	39.782777 °	
				-121.871179 °	-121.871179 °	
DWR ID						
Comment Code						
Inspector Comment						
FS_ID:31965						
DS_ID:19291						
EP_NO: N/A						
Repair Type: Non-Urgent						
Crossing Status: Found						
UCIP Comments: Needs cleaning and clearing the culvert.						
FIELD_STRUCT_DESC: 24-inch CM pipe through the levee, 11.0 feet below the crown. Flap gate on the waterward end. Concrete "U" headwall on both ends. Grouted riprap apron on the landward end. Grouted riprap spillway on the waterward end. O&M Manual Sac 504, May 1965.						
FS Date: 3/7/2014						

Photo 3 of 3 : UCIP\_FA\_2017\_31965\_58393.jpg



LS view: inside view of CMP on levee slope. Needs cleaning and clearing.

LM Start	2.47	Rating **	M	Issue No.	34
LM End	2.47	Issue Type +	Ma	Location *	
Category	Supplemental			GPS Latitude/Longitude	
				Start	End
Item	DWR UCIP LMA Responsibility			39.784244 °	39.784244 °
				-121.876810 °	-121.876810 °
DWR ID					
Comment Code					
Inspector Comment					
FS_ID:31966					
DS_ID:19292					
EP_NO: N/A					
Repair Type: Non-Urgent					
Crossing Status: Found					
UCIP Comments: Needs cleaning and clearing the culvert.					
FIELD_STRUCT_DESC: 24-inch CM pipe through levee, 11.0 feet below the crown. Flap gate on the waterward end. Concrete "U" headwalls on both ends. Grouted riprap apron on the landward end. Grouted riprap spillway on the waterward end. O&M Manual Sac 504, May 1965.					
FS Date: 3/7/2014					

Photo 1 of 3 : UCIP\_FA\_2017\_31966\_58401.jpg



WS view: U type concrete headwall and grouted riprap spillway on levee slope.

<b>* Location</b> LS : Land Side    N/A : Not Applicable WS : Water Side CR : Crown		<b>** Rating</b> A : Acceptable M : Minimally Acceptable U : Unacceptable N : Not Inspected/Rated C : Corrected A/W : Acceptable but Monitor & Maintain		<b>+ Issue Type</b> Ma : Maintenance Deficiency Ob : Design & System Obsolescence En : Enforcement
--	--	---	--	---



**Flood Control Project Maintenance  
Levee Inspections**

**Maintenance Issue Types Only, Levee Inspection Report By Mile - Fall 2017**

**Butte County Department of Public Works**

Waterway	Bank	Unit Miles	Inspection Start/End	Inspector
Unit No. 04 Sycamore and Dry Creeks	Right	2.86	10/11/2017 10/11/2017	Bob Duffey

LM Start	2.47	Rating **	M	Issue No.	34 (cont)	
LM End	2.47	Issue Type +	Ma	Location *		
Category	Supplemental			GPS Latitude/Longitude		
				Start	End	
Item	DWR UCIP LMA Responsibility			39.784244 °	39.784244 °	
				-121.876810 °	-121.876810 °	
DWR ID						
Comment Code						
Inspector Comment						
FS_ID:31966						
DS_ID:19292						
EP_NO: N/A						
Repair Type: Non-Urgent						
Crossing Status: Found						
UCIP Comments: Needs cleaning and clearing the culvert.						
FIELD_STRUCT_DESC: 24-inch CM pipe through levee, 11.0 feet below the crown. Flap gate on the waterward end. Concrete "U" headwalls on both ends. Grouted riprap apron on the landward end. Grouted riprap spillway on the waterward end. O&M Manual Sac 504, May 1965.						
FS Date: 3/7/2014						

Photo 2 of 3 : UCIP\_FA\_2017\_31966\_58400.jpg



WS view: U type concrete headwall and CMP on levee slope. Vegetation debris and mud on outlet box. Needs cleaning and clearing.

LM Start	<b>2.47</b>	Rating **	M	Issue No.	<b>34 (cont)</b>
LM End	<b>2.47</b>	Issue Type +	Ma	Location *	

Photo 3 of 3 : UCIP\_FA\_2017\_31966\_58399.jpg



LS view: U type concrete headwall and CMP on levee slope. Vegetation debris and mud in pipe and inlet box.

<b>* Location</b> LS : Land Side    N/A : Not Applicable WS : Water Side CR : Crown	<b>** Rating</b> A : Acceptable M : Minimally Acceptable U : Unacceptable	N : Not Inspected/Rated C : Corrected A/W : Acceptable but Monitor & Maintain	<b>+ Issue Type</b> Ma : Maintenance Deficiency Ob : Design & System Obsolescence En : Enforcement
--	--	---	---

**Flood Control Project Maintenance  
Levee Inspections**

## Maintenance Issue Types Only, Levee Inspection Report By Mile - Fall 2017

### Butte County Department of Public Works

Waterway	Bank	Unit Miles	Inspection Start/End	Inspector
Unit No. 05 Big Chico Diversion	Left	1.85	10/11/2017 10/11/2017	Bob Duffey

LM Start	0.21	Rating **	M	Issue No.	4
LM End	0.26	Issue Type +	Ma	Location *	WS
Category	Earthen Levee			GPS Latitude/Longitude	
				Start	End
Item	Vegetation			39.761957 °	39.761892 °
				-121.792867 °	-121.793705 °
DWR ID	DWR_NA0003_05_f_2014_4				
Comment Code					
V2 : Remove the wild growth other than native grasses from the levee slopes.					
Inspector Comment					
Remove the vegetation from the waterside slope.					

Photo 1 of 1 : FA\_2017\_NA0003\_69\_4\_20170911\_00003.jpg



View of the vegetation along the waterside slope.

LM Start	0.26	Rating **	M	Issue No.	8
LM End	0.26	Issue Type +	Ma	Location *	LS
Category	Earthen Levee			GPS Latitude/Longitude	
				Start	End
Item	Encroachments			39.761795 °	39.761795 °
				-121.793790 °	-121.793790 °
DWR ID	DWR_NA0003_05_f_2015_8				
Comment Code					
TR : Tree or limb					
Inspector Comment					
Remove the trees from the landside toe.					

Photo 1 of 2 : FA\_2017\_NA0003\_69\_8\_20170911\_00005.jpg



View of the tree along the landside toe that has not been removed for over a year.

LM Start	<b>0.26</b>	Rating **	M	Issue No.	<b>8 (cont)</b>
LM End	<b>0.26</b>	Issue Type +	Ma	Location *	LS

Photo 2 of 2 : FA\_2017\_NA0003\_69\_8\_20170911\_00006.jpg



View of the trees along the landside toe.

* Location		** Rating		+ Issue Type	
LS : Land Side	N/A : Not Applicable	A : Acceptable	N : Not Inspected/Rated	Ma : Maintenance Deficiency	
WS : Water Side		M : Minimally Acceptable	C : Corrected	Ob : Design & System Obsolescence	
CR : Crown		U : Unacceptable	A/W : Acceptable but Monitor & Maintain	En : Enforcement	



**Flood Control Project Maintenance  
Levee Inspections**

## Maintenance Issue Types Only, Levee Inspection Report By Mile - Fall 2017

### Butte County Department of Public Works

Waterway	Bank	Unit Miles	Inspection Start/End	Inspector
Unit No. 05 Big Chico Diversion	Left	1.85	10/11/2017 10/11/2017	Bob Duffey

LM Start	0.33	Rating **	M	Issue No.	9
LM End	0.33	Issue Type +	Ma	Location *	WS
Category	Earthen Levee			GPS Latitude/Longitude	
				Start	End
Item	Vegetation			39.761642 °	39.761642 °
				-121.795008 °	-121.795008 °
DWR ID	DWR_NA0003_05_s_2017_9				
Comment Code					
V2 : Remove the wild growth other than native grasses from the levee slopes.					
Inspector Comment					

Photo 1 of 1 : FA\_2017\_NA0003\_69\_9\_20170911\_00007.jpg



View of the vegetation along the waterside slope and toe.

LM Start	0.34	Rating **	M	Issue No.	3
LM End	0.42	Issue Type +	Ma	Location *	LS
Category	Earthen Levee			GPS Latitude/Longitude	
				Start	End
Item	Vegetation			39.761633 °	39.761117 °
				-121.795155 °	-121.796464 °
DWR ID	DWR_NA0003_05_f_2013_3				
Comment Code					
V2 : Remove the wild growth other than native grasses from the levee slopes.					
Inspector Comment					

Photo 1 of 2 : FA\_2017\_NA0003\_69\_3\_20170911\_00001.jpg



View of the vegetation along the landside slope and toe.

LM Start	<b>0.34</b>	Rating **	M	Issue No.	<b>3 (cont)</b>
LM End	<b>0.42</b>	Issue Type +	Ma	Location *	LS

Photo 2 of 2 : FA\_2017\_NA0003\_69\_3\_20170911\_00002.jpg



View of the vegetation along the landside slope and toe.

<b>* Location</b> LS : Land Side    N/A : Not Applicable WS : Water Side CR : Crown		<b>** Rating</b> A : Acceptable                      N : Not Inspected/Rated M : Minimally Acceptable        C : Corrected U : Unacceptable                  A/W : Acceptable but Monitor & Maintain		<b>+ Issue Type</b> Ma : Maintenance Deficiency Ob : Design & System Obsolescence En : Enforcement	
--	--	---	--	---	--



**Flood Control Project Maintenance  
Levee Inspections**

**Maintenance Issue Types Only, Levee Inspection Report By Mile - Fall 2017**

**Butte County Department of Public Works**

Waterway	Bank	Unit Miles	Inspection Start/End	Inspector
Unit No. 05 Big Chico Diversion	Left	1.85	10/11/2017 10/11/2017	Bob Duffey

LM Start	0.41	Rating **	M	Issue No.	10
LM End	0.41	Issue Type +	Ma	Location *	LS
Category	Earthen Levee			GPS Latitude/Longitude	
				Start	End
Item	Encroachments			39.761203 °	39.761203 °
				-121.796328 °	-121.796328 °
DWR ID	DWR_NA0003_05_s_2017_10				
Comment Code					
TR : Tree or limb					
Inspector Comment					
Remove down tree on slope as well as trees smaller than 4-inches in diameter at chest height.					

Photo 1 of 1 : FA\_2017\_NA0003\_69\_10\_20170911\_00008.jpg



View of the tree along the landside slope and toe.

LM Start	0.42	Rating **	M	Issue No.	11
LM End	0.42	Issue Type +	Ma	Location *	LS
Category	Earthen Levee			GPS Latitude/Longitude	
				Start	End
Item	Slope Stability			39.761077 °	39.761077 °
				-121.796576 °	-121.796576 °
DWR ID	DWR_NA0003_05_f_2016_11				
Comment Code					
S2 : Repair the levee slope damaged by foot traffic and prevent access where possible.					
Inspector Comment					

Photo 1 of 1 : FA\_2017\_NA0003\_69\_11\_20170911\_00009.jpg



View of the damaged slope by foot traffic.

\* Location  
LS : Land Side N/A : Not Applicable  
WS : Water Side  
CR : Crown

\*\* Rating  
A : Acceptable N : Not Inspected/Rated  
M : Minimally Acceptable C : Corrected  
U : Unacceptable A/W : Acceptable but Monitor & Maintain

+ Issue Type  
Ma : Maintenance Deficiency  
Ob : Design & System Obsolescence  
En : Enforcement

**Flood Control Project Maintenance  
Levee Inspections**

## Maintenance Issue Types Only, Levee Inspection Report By Mile - Fall 2017

### Butte County Department of Public Works

Waterway	Bank	Unit Miles	Inspection Start/End	Inspector
Unit No. 05 Big Chico Diversion	Left	1.85	10/11/2017 10/11/2017	Bob Duffey

LM Start	0.50	Rating **	M	Issue No.	12
LM End	0.82	Issue Type +	Ma	Location *	LS
Category	Earthen Levee			GPS Latitude/Longitude	
				Start	End
Item	Trim / Thin Trees			39.761836 °	39.763507 °
				-121.797316 °	-121.802545 °
DWR ID	DWR_NA0003_05_f_2016_12				
Comment Code					
T2 : Thin trees to allow visibility of the ground and room to flood fight.					
Inspector Comment					

Photo 1 of 1 : FA\_2017\_NA0003\_69\_12\_20170911\_00010.jpg



View of the trees along the landside slope.

LM Start	0.85	Rating **	M	Issue No.	14
LM End	1.85	Issue Type +	Ma	Location *	LS
Category	Earthen Levee			GPS Latitude/Longitude	
				Start	End
Item	Vegetation			39.764702 °	39.775426 °
				-121.803562 °	-121.814201 °
DWR ID	DWR_NA0003_05_f_2017_14				
Comment Code					
V2 : Remove the wild growth other than native grasses from the levee slopes.					
Inspector Comment					
Remove the native grasses from both slopes.					

Photo 1 of 1 : FA\_2017\_NA0003\_69\_14\_20171019\_00012.jpg



View of native grasses on both slopes.

LM Start	0.89	Rating **	A/W	Issue No.	6
LM End	0.89	Issue Type +	Ma	Location *	LS
Category	Earthen Levee			GPS Latitude/Longitude	
				Start	End
Item	Vegetation			39.764397 °	39.764397 °
				-121.803335 °	-121.803335 °
DWR ID	DWR_NA0003_05_f_2014_6				
Comment Code					
V4 : Elderberries are blocking visibility and flood fight capability.					
Inspector Comment					
Elderberry is not completely blocking the visibility.					

No Photos

* Location		** Rating		+ Issue Type	
LS : Land Side	N/A : Not Applicable	A : Acceptable	N : Not Inspected/Rated	Ma : Maintenance Deficiency	
WS : Water Side		M : Minimally Acceptable	C : Corrected	Ob : Design & System Obsolescence	
CR : Crown		U : Unacceptable	A/W : Acceptable but Monitor & Maintain	En : Enforcement	

**Flood Control Project Maintenance  
Levee Inspections**

**Maintenance Issue Types Only, Levee Inspection Report By Mile - Fall 2017**

**Butte County Department of Public Works**

Waterway	Bank	Unit Miles	Inspection Start/End	Inspector
Unit No. 05 Big Chico Diversion	Left	1.85	10/11/2017 10/11/2017	Bob Duffey

LM Start	1.25	Rating **	M	Issue No.	13
LM End	1.25	Issue Type +	Ma	Location *	LS
Category	Earthen Levee			GPS Latitude/Longitude	
				Start	End
Item	Slope Stability			39.768621 °	39.768621 °
				-121.807052 °	-121.807052 °
DWR ID	DWR_NA0003_05_f_2016_13				
Comment Code					
S2 : Repair the levee slope damaged by foot traffic and prevent access where possible.					
Inspector Comment					

Photo 1 of 1 : FA\_2017\_NA0003\_69\_13\_20170911\_00011.jpg



View of the damaged slope by foot traffic.

LM Start	1.56	Rating **	U	Issue No.	15
LM End	1.56	Issue Type +	Ma	Location *	LS
Category	Earthen Levee			GPS Latitude/Longitude	
				Start	End
Item	Slope Stability			39.772190 °	39.772190 °
				-121.810700 °	-121.810700 °
DWR ID	DWR_NA0003_05_f_2017_15				
Comment Code					
S1 : Repair slope instability.					
Inspector Comment					
Repair the levee slope and toe.					

Photo 1 of 1 : FA\_2017\_NA0003\_69\_15\_20171019\_00013.jpg



View of the housing track road cutting into the levees slope and toe.

\* Location  
LS : Land Side    N/A : Not Applicable  
WS : Water Side  
CR : Crown

\*\* Rating  
A : Acceptable                      N : Not Inspected/Rated  
M : Minimally Acceptable        C : Corrected  
U : Unacceptable                  A/W : Acceptable but Monitor & Maintain

+ Issue Type  
Ma : Maintenance Deficiency  
Ob : Design & System Obsolescence  
En : Enforcement