

**Flood Control Project Maintenance
Levee Inspections**

Maintenance Issue Types Only, Levee Inspection Report By Mile - Spring 2024

Brannan Andrus Levee Maintenance District

Waterway	Bank	Unit Miles	Inspection Start/End	Inspector
Unit No. 01 Georgiana Slough	Right	6.01	04/17/2024 04/17/2024	Gregg McMillon

LM Start		Rating **	A	Issue No.	27
LM End		Issue Type +	Ma	Location *	N/A
Category	Earthen Levee		GPS Latitude/Longitude		
			Start	End	
Item	Flood Preparedness & Training			°	°
				°	°
DWR ID	DWR_NA0002_01_s _ 2012_27				
Comment Code					
FP : Flood Preparedness & Training					
Inspector Comment					
LMA is prepared to respond to a flood emergency.					

No Photos

LM Start		Rating **	A	Issue No.	32
LM End		Issue Type +	Ma	Location *	N/A
Category	Earthen Levee		GPS Latitude/Longitude		
			Start	End	
Item	Operations & Maintenance Manuals			°	°
				°	°
DWR ID	DWR_NA0002_01_s _ 2013_32				
Comment Code					
OM : O&M Manuals					
Inspector Comment					
The LMA maintains a copy of the O&M manual on file at district office.					

No Photos

LM Start		Rating **	A	Issue No.	33
LM End		Issue Type +	Ma	Location *	N/A
Category	Earthen Levee		GPS Latitude/Longitude		
			Start	End	
Item	Emergency Supplies & Equipment			°	°
				°	°
DWR ID	DWR_NA0002_01_s _ 2013_33				
Comment Code					
ES : Emergency Supplies & Equipment					
Inspector Comment					
LMA maintains an adequate amount of flood fight supplies and equipment for flood response.					

No Photos

* Location LS : Land Side N/A : Not Applicable WS : Water Side CR : Crown	** Rating A : Acceptable M : Minimally Acceptable U : Unacceptable	N : Not Inspected/Rated C : Corrected A/W : Acceptable but Monitor & Maintain	+ Issue Type Ma : Maintenance Deficiency Ob : Design & System Obsolescence En : Enforcement
--	--	---	---

**Flood Control Project Maintenance
Levee Inspections****Maintenance Issue Types Only, Levee Inspection Report By Mile - Spring 2024****Brannan Andrus Levee Maintenance District**

Waterway	Bank	Unit Miles	Inspection Start/End	Inspector
Unit No. 01 Georgiana Slough	Right	6.01	04/17/2024 04/17/2024	Gregg McMillon

LM Start	0.01	Rating **	M	Issue No.	46
LM End	2.24	Issue Type +	Ma	Location *	LS
Category	Earthen Levee			GPS Latitude/Longitude	
				Start	End
Item	Vegetation			38.186418°	38.163657°
				-121.562849°	-121.584337°
DWR ID	DWR_NA0002_01_s_2024_46				
Comment Code					
V1 : Control annual grass and weeds on the levee slopes and easements.					
Inspector Comment					

No Photos

LM Start	0.02	Rating **	M	Issue No.	49
LM End	2.24	Issue Type +	Ma	Location *	WS
Category	Earthen Levee			GPS Latitude/Longitude	
				Start	End
Item	Vegetation			38.186365°	38.163657°
				-121.563025°	-121.584336°
DWR ID	DWR_NA0002_01_s_2024_49				
Comment Code					
V1 : Control annual grass and weeds on the levee slopes and easements.					
Inspector Comment					

No Photos

LM Start	0.81	Rating **	M	Issue No.	133
LM End	0.83	Issue Type +	Ma	Location *	LS
Category	Earthen Levee			GPS Latitude/Longitude	
				Start	End
Item	Animal Control			38.182147°	38.182085°
				-121.575962°	-121.576350°
DWR ID	DWR_NA0002_01_f_2021_133				
Comment Code					
A1 : Exterminate rodents and backfill and compact or grout burrows.					
Inspector Comment					
Rodent holes on the landside slope.					

Photo 1 of 1 : SP_2024_NA0002_62_133_20240301_00036.jpg



View of rodent holes on the landside slope. Fall 2023.

* Location	** Rating	+ Issue Type
LS : Land Side WS : Water Side CR : Crown	A : Acceptable M : Minimally Acceptable U : Unacceptable	Ma : Maintenance Deficiency Ob : Design & System Obsolescence En : Enforcement
N : Not Inspected/Rated C : Corrected A/W : Acceptable but Monitor & Maintain		

**Flood Control Project Maintenance
Levee Inspections****Maintenance Issue Types Only, Levee Inspection Report By Mile - Spring 2024****Brannan Andrus Levee Maintenance District**

Waterway	Bank	Unit Miles	Inspection Start/End	Inspector
Unit No. 01 Georgiana Slough	Right	6.01	04/17/2024 04/17/2024	Gregg McMillon

LM Start	1.53	Rating **	M	Issue No.	39
LM End	1.54	Issue Type +	Ma	Location *	WS
Category	Supplemental			GPS Latitude/Longitude	
				Start	End
Item	2018 USACE Erosion Survey			38.173410°	38.173178°
				-121.580683°	-121.580622°
DWR ID	DWR_NA0002_01_s_2022_39				
Comment Code					
Inspector Comment					
2018 Site ID: GEO 5.5 R					
Status: Eroding					
2018 Field Notes: Site extended downstream.					
Site History: 2017 - Failed rock section, slump failure of bank to subvertical face.					

LM Start	1.53	Rating **	M	Issue No.	39 (cont)
LM End	1.54	Issue Type +	Ma	Location *	WS

Photo 1 of 3 : SP_2024_NA0002_62_39_20240301_00010.jpg



View of erosion on the waterside slope. Fall 2023.

Photo 2 of 3 : SP_2024_NA0002_62_39_20240301_00011.jpg



USACE 2018 Erosion Photo #1

LM Start	1.53	Rating **	M	Issue No.	39 (cont)
LM End	1.54	Issue Type +	Ma	Location *	WS

Photo 3 of 3 : SP_2024_NA0002_62_39_20240301_00012.jpg



USACE 2018 Erosion Photo #2

* Location	** Rating	+ Issue Type
LS: Land Side WS: Water Side CR: Crown	A: Acceptable M: Minimally Acceptable U: Unacceptable	Ma: Maintenance Deficiency Ob: Design & System Obsolescence En: Enforcement
N/A: Not Applicable	N: Not Inspected/Rated C: Corrected A/W: Acceptable but Monitor & Maintain	

**Flood Control Project Maintenance
Levee Inspections**

Maintenance Issue Types Only, Levee Inspection Report By Mile - Spring 2024

Brannan Andrus Levee Maintenance District

Waterway	Bank	Unit Miles	Inspection Start/End	Inspector
Unit No. 01 Georgiana Slough	Right	6.01	04/17/2024 04/17/2024	Gregg McMillon

LM Start	2.34	Rating **	U	Issue No.	72
LM End	2.34	Issue Type +	Ma	Location *	LS
Category	Earthen Levee			GPS Latitude/Longitude	
				Start	End
Item	Trim / Thin Trees			38.162242°	38.162242°
				-121.585058°	-121.585058°
DWR ID	DWR_NA0002_01_f_2016_72				
Comment Code					
T1 : Trim and thin trees to at least five feet above ground level to allow visibility of the ground and room to flood fight.					
Inspector Comment					

Photo 1 of 1 : SP_2024_NA0002_62_72_20240301_00025.jpg



View of thick tree on the landside shoulder (Spring 2022).

LM Start	2.36	Rating **	M	Issue No.	7
LM End	2.36	Issue Type +	Ma	Location *	LS
Category	Earthen Levee			GPS Latitude/Longitude	
				Start	End
Item	Animal Control			38.162004°	38.162004°
				-121.585229°	-121.585229°
DWR ID	DWR_NA0002_01_s_2012_7				
Comment Code					
A3 : No rodents visible, but rodent burrows visible; need to backfill and compact or grout burrows.					
Inspector Comment					
Rodent colony exists under raised Tyler Island Bridge approach. Rodents should be exterminated and their holes backfilled.					

No Photos

LM Start	2.41	Rating **	A/W	Issue No.	45
LM End	2.78	Issue Type +	Ma	Location *	CR
Category	Earthen Levee			GPS Latitude/Longitude	
				Start	End
Item	Access Gates			38.161415°	38.157900°
				-121.585700°	-121.589291°
DWR ID	DWR_NA0002_01_s_2024_45				
Comment Code					
AG : Access Gates					
Inspector Comment					
Sheep fence blocking access to levee while sheep were grazing.					

No Photos

* Location LS : Land Side N/A : Not Applicable WS : Water Side CR : Crown	** Rating A : Acceptable M : Minimally Acceptable U : Unacceptable	N : Not Inspected/Rated C : Corrected A/W : Acceptable but Monitor & Maintain	+ Issue Type Ma : Maintenance Deficiency Ob : Design & System Obsolescence En : Enforcement
--	--	---	---

**Flood Control Project Maintenance
Levee Inspections**

Maintenance Issue Types Only, Levee Inspection Report By Mile - Spring 2024

Brannan Andrus Levee Maintenance District

Waterway	Bank	Unit Miles	Inspection Start/End	Inspector
Unit No. 01 Georgiana Slough	Right	6.01	04/17/2024 04/17/2024	Gregg McMillon

LM Start	2.41	Rating **	U	Issue No.	28
LM End	2.49	Issue Type +	Ma	Location *	LS
Category	Earthen Levee			GPS Latitude/Longitude	
				Start	End
Item	Vegetation			38.161301°	38.160281°
				-121.585560°	-121.586007°
DWR ID	DWR_NA0002_01_s_2013_28				
Comment Code					
V2 : Remove the wild growth and woody vegetation other than native grasses from the levee slopes.					
Inspector Comment					
The wild roses have been removed but some dense vegetation on the toe remains.					

Photo 1 of 1 : SP_2024_NA0002_62_28_20240301_00008.jpg



View of the vegetation on the LS toe (Fall 2022).

LM Start	2.58	Rating **	M	Issue No.	52
LM End	2.58	Issue Type +	Ma	Location *	LS
Category	Earthen Levee			GPS Latitude/Longitude	
				Start	End
Item	Trim / Thin Trees			38.158999°	38.158999°
				-121.586621°	-121.586621°
DWR ID	DWR_NA0002_01_f_2017_29				
Comment Code					
T1 : Trim and thin trees to at least five feet above ground level to allow visibility of the ground and room to flood fight.					
Inspector Comment					

Photo 1 of 1 : SP_2024_NA0002_62_52_20240301_00016.jpg



View of the tree on the LS slope (Fall 2022).

LM Start	2.99	Rating **	U	Issue No.	44
LM End	3.01	Issue Type +	Ma	Location *	LS
Category	Earthen Levee			GPS Latitude/Longitude	
				Start	End
Item	Vegetation			38.156668°	38.156361°
				-121.592395°	-121.592515°
DWR ID	DWR_NA0002_01_s_2024_44				
Comment Code					
V2 : Remove the wild growth and woody vegetation other than native grasses from the levee slopes.					
Inspector Comment					
Trim or remove tall bushes on LS shoulder.					

Photo 1 of 1 : SP_2024_NA0002_62_44_20240422_00084.jpg



View of excessive growth on LS shoulder. (Spring 2024)

* Location LS : Land Side N/A : Not Applicable WS : Water Side CR : Crown		** Rating A : Acceptable M : Minimally Acceptable U : Unacceptable		+ Issue Type Ma : Maintenance Deficiency Ob : Design & System Obsolescence En : Enforcement	
		N : Not Inspected/Rated C : Corrected A/W : Acceptable but Monitor & Maintain			

**Flood Control Project Maintenance
Levee Inspections**

Maintenance Issue Types Only, Levee Inspection Report By Mile - Spring 2024

Brannan Andrus Levee Maintenance District

Waterway	Bank	Unit Miles	Inspection Start/End	Inspector
Unit No. 01 Georgiana Slough	Right	6.01	04/17/2024 04/17/2024	Gregg McMillon

LM Start	3.38	Rating **	A/W	Issue No.	67
LM End	3.40	Issue Type +	Ma	Location *	CR
Category	Earthen Levee			GPS Latitude/Longitude	
				Start	End
Item	Slope Stability			38.151430°	38.151390°
				-121.592085°	-121.592517°
DWR ID	DWR_NA0002_01_s_2017_67				
Comment Code					
S1 : Repair slope instability.					
Inspector Comment					
Appears to be beginning of a landside slump. LMA's Engineer (DCC) is monitoring site for movement.					

Photo 1 of 1 : SP_2024_NA0002_62_67_20240301_00024.jpg



View of the depression on the levee crown (Fall 2022).

LM Start	3.45	Rating **	C	Issue No.	22
LM End	3.48	Issue Type +	Ma	Location *	WS
Category	Earthen Levee			GPS Latitude/Longitude	
				Start	End
Item	Vegetation			38.151567°	38.151702°
				-121.593288°	-121.593875°
DWR ID	DWR_NA0002_01_f_2023_22				
Comment Code					
V2 : Remove the wild growth and woody vegetation other than native grasses from the levee slopes.					
Inspector Comment					

No Photos

LM Start	3.51	Rating **	M	Issue No.	26
LM End	3.83	Issue Type +	Ma	Location *	WS
Category	Earthen Levee			GPS Latitude/Longitude	
				Start	End
Item	Vegetation			38.151801°	38.149723°
				-121.594468°	-121.599034°
DWR ID	DWR_NA0002_01_f_2023_26				
Comment Code					
V2 : Remove the wild growth and woody vegetation other than native grasses from the levee slopes.					
Inspector Comment					
Trim willows on waterside shoulder.					

No Photos

* Location LS : Land Side N/A : Not Applicable WS : Water Side CR : Crown	** Rating A : Acceptable M : Minimally Acceptable U : Unacceptable	N : Not Inspected/Rated C : Corrected A/W : Acceptable but Monitor & Maintain	+ Issue Type Ma : Maintenance Deficiency Ob : Design & System Obsolescence En : Enforcement
--	--	---	---

**Flood Control Project Maintenance
Levee Inspections****Maintenance Issue Types Only, Levee Inspection Report By Mile - Spring 2024****Brannan Andrus Levee Maintenance District**

Waterway	Bank	Unit Miles	Inspection Start/End	Inspector
Unit No. 01 Georgiana Slough	Right	6.01	04/17/2024 04/17/2024	Gregg McMillon

LM Start	3.99	Rating **	M	Issue No.	143
LM End	3.99	Issue Type +	Ma	Location *	
Category	Supplemental			GPS Latitude/Longitude	
				Start	End
Item	DWR UCIP LMA Responsibility			38.147677°	38.147677°
				-121.600501°	-121.600501°
DWR ID	21772				
Comment Code					
Inspector Comment					
DS_ID:21772					
FS_ID:62327					
EP_NO: 11248					
Repair Type: Non-Urgent					
EVAL Issue: 10, Unauthorized Modification or Non-Compliant Permit					
Crossing Status: Found					
UCIP Comments: 06/23/2020 Record updated from No Action Needed to Non-Urgent. 20-inch steel drainage pipe sleeved through 24-inch steel pipe. Annular space between pipes seems to be grouted. Unable to find a permit for modification. Asphalt repair patches on levee crown. No permit has been identified authorizing pipe. Need to have CVFPB review ABO and determine current owner. (O.Yakimov - DWR UCIP)					
FIELD_STRUCT_DESC: 20-inch steel drainage pipe sleeved through 24-inch steel pipe through the levee, 3 feet below the crown. Siphon breaker is located on the waterside (WS) slope. Pump is located on the landside (LS). (24-inch pipe [HLM 3.99] authorized under Automatic Board Order (ABO) issued as Permit No. 11248, 1975 - Reclamation District No.407). [Additional Reference(s): DWR Levee Log, 2005 (HLM 3.99), listed as 24-inch pipe. USACE Sacramento O&M Manual, Unit 103, June 1954, Revised 29 December 2016, (Station 'R' 107+76), listed as 26-inch pipe. USACE As-Built Drawing No. 50-04-2631, Sheet 2, Station 107+76, March 1950, listed as 26-inch pipe].					
FS Date: 6/23/2020 9:27:29 AM					

LM Start	3.99	Rating **	M	Issue No.	143 (cont)
LM End	3.99	Issue Type +	Ma	Location *	

Photo 1 of 3 : UCIP_SP_2024_62327_90037.jpg



Top of Levee: View of levee crown looking downstream

Photo 2 of 3 : UCIP_SP_2024_62327_90035.jpg



Land-Side: Pipe sleeving point on levee slope

* Location	** Rating	+ Issue Type
LS: Land Side WS: Water Side CR: Crown	A: Acceptable M: Minimally Acceptable U: Unacceptable	Ma: Maintenance Deficiency Ob: Design & System Obsolescence En: Enforcement
N/A: Not Applicable	N: Not Inspected/Rated C: Corrected A/W: Acceptable but Monitor & Maintain	

**Flood Control Project Maintenance
Levee Inspections**

Maintenance Issue Types Only, Levee Inspection Report By Mile - Spring 2024

Brannan Andrus Levee Maintenance District

Waterway	Bank	Unit Miles	Inspection Start/End	Inspector
Unit No. 01 Georgiana Slough	Right	6.01	04/17/2024 04/17/2024	Gregg McMillon

LM Start	3.99	Rating **	M	Issue No.	143 (cont)
LM End	3.99	Issue Type +	Ma	Location *	
Category	Supplemental		GPS Latitude/Longitude		
			Start	End	
Item	DWR UCIP LMA Responsibility		38.147677°	38.147677°	
			-121.600501°	-121.600501°	
DWR ID	21772				

Photo 3 of 3 : UCIP_SP_2024_62327_90033.jpg



Water-Side: View of pipe at riverbank. Siphon breaker installed on the pipe at this place

LM Start	4.17	Rating **	M	Issue No.	43
LM End	4.29	Issue Type +	Ma	Location *	LS
Category	Earthen Levee			GPS Latitude/Longitude	
				Start	End
Item	Vegetation			38.145257°	38.143657°
				-121.601605°	-121.600853°
DWR ID	DWR_NA0002_01_s_ 2024_43				
Comment Code					
V1 : Control annual grass and weeds on the levee slopes and easements.					
Inspector Comment					

No Photos

LM Start	4.26	Rating **	N	Issue No.	109
LM End	4.26	Issue Type +	Ma	Location *	LS
Category	Earthen Levee			GPS Latitude/Longitude	
				Start	End
Item	Trim / Thin Trees			38.143988°	38.143988°
				-121.601103°	-121.601103°
DWR ID	DWR_NA0002_01_f_ 2022_109				
Comment Code					
T5 : Tree stumps.					
Inspector Comment					
There are three tree stumps on the LS slope.					

Photo 1 of 1 : SP_2024_NA0002_62_109_20240301_00030.jpg



View of the tree stumps on the LS slope (Fall 2022).

* Location LS : Land Side N/A : Not Applicable WS : Water Side CR : Crown		** Rating A : Acceptable M : Minimally Acceptable U : Unacceptable		N : Not Inspected/Rated C : Corrected A/W : Acceptable but Monitor & Maintain		+ Issue Type Ma : Maintenance Deficiency Ob : Design & System Obsolescence En : Enforcement	
--	--	--	--	---	--	---	--

**Flood Control Project Maintenance
Levee Inspections**

Maintenance Issue Types Only, Levee Inspection Report By Mile - Spring 2024

Brannan Andrus Levee Maintenance District

Waterway	Bank	Unit Miles	Inspection Start/End	Inspector
Unit No. 01 Georgiana Slough	Right	6.01	04/17/2024 04/17/2024	Gregg McMillon

LM Start	4.28	Rating **	M	Issue No.	108
LM End	4.28	Issue Type +	Ma	Location *	WS
Category	Earthen Levee			GPS Latitude/Longitude	
				Start	End
Item	Trim / Thin Trees			38.143706°	38.143706°
				-121.600903°	-121.600903°
DWR ID	DWR_NA0002_01_f_2022_108				
Comment Code					
T2 : Tree or limb.					
Inspector Comment					
There are tree limbs on the WS slope.					

Photo 1 of 1 : SP_2024_NA0002_62_108_20240301_00029.jpg



View of the tree limbs on the WS slope (Fall 2022).

LM Start	4.52	Rating **	M	Issue No.	29
LM End	4.52	Issue Type +	Ma	Location *	LS
Category	Earthen Levee			GPS Latitude/Longitude	
				Start	End
Item	Animal Control			38.140874°	38.140874°
				-121.598580°	-121.598580°
DWR ID	DWR_NA0002_01_f_2023_29				
Comment Code					
A1 : Exterminate rodents and backfill and compact or grout burrows.					
Inspector Comment					
Rodent holes are on the landside slope.					

No Photos

LM Start	4.70	Rating **	M	Issue No.	41
LM End	4.74	Issue Type +	Ma	Location *	LS
Category	Earthen Levee			GPS Latitude/Longitude	
				Start	End
Item	Vegetation			38.138441°	38.137974°
				-121.597167°	-121.596876°
DWR ID	DWR_NA0002_01_s_2024_41				
Comment Code					
V1 : Control annual grass and weeds on the levee slopes and easements.					
Inspector Comment					

No Photos

* Location		** Rating		+ Issue Type	
LS : Land Side	N/A : Not Applicable	A : Acceptable	N : Not Inspected/Rated	Ma : Maintenance Deficiency	
WS : Water Side		M : Minimally Acceptable	C : Corrected	Ob : Design & System Obsolescence	
CR : Crown		U : Unacceptable	A/W : Acceptable but Monitor & Maintain	En : Enforcement	

**Flood Control Project Maintenance
Levee Inspections**

Maintenance Issue Types Only, Levee Inspection Report By Mile - Spring 2024

Brannan Andrus Levee Maintenance District

Waterway	Bank	Unit Miles	Inspection Start/End	Inspector
Unit No. 01 Georgiana Slough	Right	6.01	04/17/2024 04/17/2024	Gregg McMillon

LM Start	4.83	Rating **	M	Issue No.	38
LM End	4.95	Issue Type +	Ma	Location *	WS
Category	Earthen Levee			GPS Latitude/Longitude	
				Start	End
Item	Vegetation			38.136851°	38.135482°
				-121.595983°	-121.594555°
DWR ID	DWR_NA0002_01_s_2024_38				
Comment Code					
V1 : Control annual grass and weeds on the levee slopes and easements.					
Inspector Comment					

No Photos

LM Start	4.86	Rating **	M	Issue No.	40
LM End	4.95	Issue Type +	Ma	Location *	LS
Category	Earthen Levee			GPS Latitude/Longitude	
				Start	End
Item	Vegetation			38.136533°	38.135552°
				-121.595684°	-121.594629°
DWR ID	DWR_NA0002_01_s_2024_40				
Comment Code					
V1 : Control annual grass and weeds on the levee slopes and easements.					
Inspector Comment					

No Photos

LM Start	4.96	Rating **	M	Issue No.	30
LM End	4.96	Issue Type +	Ma	Location *	LS
Category	Earthen Levee			GPS Latitude/Longitude	
				Start	End
Item	Trim / Thin Trees			38.135346°	38.135346°
				-121.594485°	-121.594485°
DWR ID	DWR_NA0002_01_f_2023_30				
Comment Code					
T1 : Trim and thin trees to at least five feet above ground level to allow visibility of the ground and room to flood fight.					
Inspector Comment					

No Photos

* Location LS : Land Side N/A : Not Applicable WS : Water Side CR : Crown	** Rating A : Acceptable M : Minimally Acceptable U : Unacceptable	N : Not Inspected/Rated C : Corrected A/W : Acceptable but Monitor & Maintain	+ Issue Type Ma : Maintenance Deficiency Ob : Design & System Obsolescence En : Enforcement
--	--	---	---

**Flood Control Project Maintenance
Levee Inspections**

Maintenance Issue Types Only, Levee Inspection Report By Mile - Spring 2024

Brannan Andrus Levee Maintenance District

Waterway	Bank	Unit Miles	Inspection Start/End	Inspector
Unit No. 01 Georgiana Slough	Right	6.01	04/17/2024 04/17/2024	Gregg McMillon

LM Start	5.28	Rating **	M	Issue No.	35
LM End	5.37	Issue Type +	Ma	Location *	LS
Category	Earthen Levee			GPS Latitude/Longitude	
				Start	End
Item	Vegetation			38.131949°	38.130920°
				-121.590601°	-121.589532°
DWR ID	DWR_NA0002_01_s_2024_35				
Comment Code					
V1 : Control annual grass and weeds on the levee slopes and easements.					
Inspector Comment					

No Photos

LM Start	5.42	Rating **	M	Issue No.	34
LM End	5.42	Issue Type +	Ma	Location *	LS
Category	Earthen Levee			GPS Latitude/Longitude	
				Start	End
Item	Trim / Thin Trees			38.130387°	38.130387°
				-121.588962°	-121.588962°
DWR ID	DWR_NA0002_01_s_2024_34				
Comment Code					
T3 : Fallen tree with root ball.					
Inspector Comment					
Fallen, burned up tree on LS slope.					

Photo 1 of 1 : SP_2024_NA0002_62_34_20240422_00085.jpg



View of fallen tree to be removed from LS slope. (Spring 2024)

LM Start	5.66	Rating **	C	Issue No.	117
LM End	5.84	Issue Type +	Ma	Location *	WS
Category	Earthen Levee			GPS Latitude/Longitude	
				Start	End
Item	Vegetation			38.129248°	38.129635°
				-121.584988°	-121.581698°
DWR ID	DWR_NA0002_01_f_2021_117				
Comment Code					
V2 : Remove the wild growth and woody vegetation other than native grasses from the levee slopes.					
Inspector Comment					

No Photos

* Location LS : Land Side N/A : Not Applicable WS : Water Side CR : Crown	** Rating A : Acceptable M : Minimally Acceptable U : Unacceptable	N : Not Inspected/Rated C : Corrected A/W : Acceptable but Monitor & Maintain	+ Issue Type Ma : Maintenance Deficiency Ob : Design & System Obsolescence En : Enforcement
--	--	---	---

**Flood Control Project Maintenance
Levee Inspections**

Maintenance Issue Types Only, Levee Inspection Report By Mile - Spring 2024

Brannan Andrus Levee Maintenance District

Waterway	Bank	Unit Miles	Inspection Start/End	Inspector
Unit No. 02 Sacramento River	Left	11.54	04/17/2024 04/17/2024	Gregg McMillon

LM Start	0.02	Rating **	M	Issue No.	42
LM End	0.45	Issue Type +	Ma	Location *	LS
Category	Earthen Levee		GPS Latitude/Longitude		
			Start	End	
Item	Vegetation		38.191766°	38.189073°	
			-121.568045°	-121.575085°	
DWR ID	DWR_NA0002_02_s_2024_42				
Comment Code					
V1 : Control annual grass and weeds on the levee slopes and easements.					
Inspector Comment					

No Photos

LM Start	0.72	Rating **	C	Issue No.	97
LM End	0.72	Issue Type +	Ma	Location *	LS
Category	Earthen Levee		GPS Latitude/Longitude		
			Start	End	
Item	Trim / Thin Trees		38.187102°	38.187102°	
			-121.579463°	-121.579463°	
DWR ID	DWR_NA0002_02_f_2018_97				
Comment Code					
T1 : Trim and thin trees to at least five feet above ground level to allow visibility of the ground and room to flood fight.					
Inspector Comment					

No Photos

LM Start	0.83	Rating **	M	Issue No.	43
LM End	1.43	Issue Type +	Ma	Location *	LS
Category	Earthen Levee		GPS Latitude/Longitude		
			Start	End	
Item	Vegetation		38.186177°	38.179230°	
			-121.581150°	-121.587514°	
DWR ID	DWR_NA0002_02_s_2024_43				
Comment Code					
V1 : Control annual grass and weeds on the levee slopes and easements.					
Inspector Comment					

No Photos

* Location LS : Land Side N/A : Not Applicable WS : Water Side CR : Crown	** Rating A : Acceptable M : Minimally Acceptable U : Unacceptable	N : Not Inspected/Rated C : Corrected A/W : Acceptable but Monitor & Maintain	+ Issue Type Ma : Maintenance Deficiency Ob : Design & System Obsolescence En : Enforcement
--	--	---	---

**Flood Control Project Maintenance
Levee Inspections**

Maintenance Issue Types Only, Levee Inspection Report By Mile - Spring 2024

Brannan Andrus Levee Maintenance District

Waterway	Bank	Unit Miles	Inspection Start/End	Inspector
Unit No. 02 Sacramento River	Left	11.54	04/17/2024 04/17/2024	Gregg McMillon

LM Start	0.85	Rating **	M	Issue No.	46
LM End	1.44	Issue Type +	Ma	Location *	WS
Category	Earthen Levee			GPS Latitude/Longitude	
				Start	End
Item	Vegetation			38.185977°	38.179055°
				-121.581281°	-121.587496°
DWR ID	DWR_NA0002_02_s_2024_46				
Comment Code					
V1 : Control annual grass and weeds on the levee slopes and easements.					
Inspector Comment					

No Photos

LM Start	1.08	Rating **	U	Issue No.	47
LM End	1.08	Issue Type +	Ma	Location *	WS
Category	Earthen Levee			GPS Latitude/Longitude	
				Start	End
Item	Trim / Thin Trees			38.183458°	38.183458°
				-121.584065°	-121.584065°
DWR ID	DWR_NA0002_02_f_2020_47				
Comment Code					
T2 : Tree or limb.					
Inspector Comment					
Remove downed tree within 20' of waterside shoulder.					

Photo 1 of 1 : SP_2024_NA0002_63_47_20240301_00014.jpg



View of downed tree on the waterside slope (Spring 2022).

LM Start	1.14	Rating **	U	Issue No.	66
LM End	1.14	Issue Type +	Ma	Location *	WS
Category	Earthen Levee			GPS Latitude/Longitude	
				Start	End
Item	Erosion / Vehicle Traffic			38.182772°	38.182772°
				-121.584689°	-121.584689°
DWR ID	DWR_NA0002_02_s_2022_66				
Comment Code					
E6 : Repair the levee slope damaged by vehicle traffic and prevent access where possible.					
Inspector Comment					

Photo 1 of 1 : SP_2024_NA0002_63_66_20240301_00023.jpg



View of damage due to vehicle going off the road on the waterside slope (Spring 2022).

* Location LS : Land Side N/A : Not Applicable WS : Water Side CR : Crown		** Rating A : Acceptable M : Minimally Acceptable U : Unacceptable		+ Issue Type Ma : Maintenance Deficiency Ob : Design & System Obsolescence En : Enforcement	
		N : Not Inspected/Rated C : Corrected A/W : Acceptable but Monitor & Maintain			

**Flood Control Project Maintenance
Levee Inspections**

Maintenance Issue Types Only, Levee Inspection Report By Mile - Spring 2024

Brannan Andrus Levee Maintenance District

Waterway	Bank	Unit Miles	Inspection Start/End	Inspector
Unit No. 02 Sacramento River	Left	11.54	04/17/2024 04/17/2024	Gregg McMillon

LM Start	1.32	Rating **	M	Issue No.	41
LM End	1.32	Issue Type +	Ma	Location *	WS
Category	Earthen Levee			GPS Latitude/Longitude	
				Start	End
Item	Trim / Thin Trees			38.180461°	38.180461°
				-121.586467°	-121.586467°
DWR ID	DWR_NA0002_02_f_2023_41				
Comment Code					
T2 : Tree or limb.					
Inspector Comment					
Cut up tree limbs on the waterside slope.					

No Photos

LM Start	1.33	Rating **	U	Issue No.	166
LM End	1.33	Issue Type +	Ma	Location *	WS
Category	Earthen Levee			GPS Latitude/Longitude	
				Start	End
Item	Trim / Thin Trees			38.180455°	38.180455°
				-121.586522°	-121.586522°
DWR ID	DWR_NA0002_02_f_2022_166				
Comment Code					
T2 : Tree or limb.					
Inspector Comment					
There is a fallen tree on the WS slope.					

Photo 1 of 1 : SP_2024_NA0002_63_166_20240301_00066.jpg



View of the tree on the WS slope (Fall 2022).

LM Start	1.44	Rating **	M	Issue No.	81
LM End	1.64	Issue Type +	Ma	Location *	WS
Category	Earthen Levee			GPS Latitude/Longitude	
				Start	End
Item	Vegetation			38.179052°	38.176577°
				-121.587499°	-121.589412°
DWR ID	DWR_NA0002_02_s_2024_81				
Comment Code					
V1 : Control annual grass and weeds on the levee slopes and easements.					
Inspector Comment					

No Photos

* Location LS : Land Side N/A : Not Applicable WS : Water Side CR : Crown		** Rating A : Acceptable M : Minimally Acceptable U : Unacceptable		N : Not Inspected/Rated C : Corrected A/W : Acceptable but Monitor & Maintain		+ Issue Type Ma : Maintenance Deficiency Ob : Design & System Obsolescence En : Enforcement	
--	--	--	--	---	--	---	--

**Flood Control Project Maintenance
Levee Inspections**

Maintenance Issue Types Only, Levee Inspection Report By Mile - Spring 2024

Brannan Andrus Levee Maintenance District

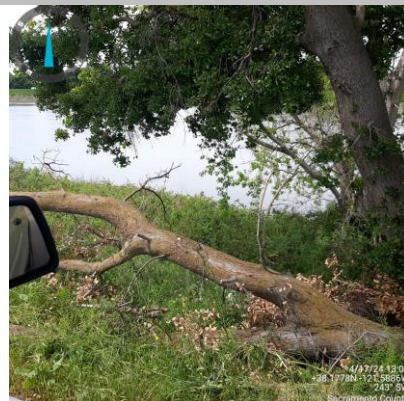
Waterway	Bank	Unit Miles	Inspection Start/End	Inspector
Unit No. 02 Sacramento River	Left	11.54	04/17/2024 04/17/2024	Gregg McMillon

LM Start	1.46	Rating **	C	Issue No.	52
LM End	1.46	Issue Type +	Ma	Location *	WS
Category	Earthen Levee			GPS Latitude/Longitude	
				Start	End
Item	Trim / Thin Trees			38.178865°	38.178865°
				-121.587763°	-121.587763°
DWR ID	DWR_NA0002_02_s_2021_52				
Comment Code					
T3 : Fallen tree with root ball.					
Inspector Comment					

No Photos

LM Start	1.54	Rating **	M	Issue No.	44
LM End	1.54	Issue Type +	Ma	Location *	WS
Category	Earthen Levee			GPS Latitude/Longitude	
				Start	End
Item	Trim / Thin Trees			38.177776°	38.177776°
				-121.588644°	-121.588644°
DWR ID	DWR_NA0002_02_s_2024_44				
Comment Code					
T2 : Tree or limb.					
Inspector Comment					

Photo 1 of 1 : SP_2024_NA0002_63_44_20240422_00155.jpg



View of fallen tree limb on WS slope. (Spring 2024)

LM Start	1.64	Rating **	N	Issue No.	78
LM End	1.64	Issue Type +	Ma	Location *	WS
Category	Earthen Levee			GPS Latitude/Longitude	
				Start	End
Item	Trim / Thin Trees			38.176532°	38.176532°
				-121.589478°	-121.589478°
DWR ID	DWR_NA0002_02_f_2018_78				
Comment Code					
T5 : Tree stumps.					
Inspector Comment					

Photo 1 of 1 : SP_2024_NA0002_63_78_20240301_00036.jpg



View of the stump and logs on the WS slope (Fall 2022).

* Location LS : Land Side N/A : Not Applicable WS : Water Side CR : Crown		** Rating A : Acceptable M : Minimally Acceptable U : Unacceptable		N : Not Inspected/Rated C : Corrected A/W : Acceptable but Monitor & Maintain		+ Issue Type Ma : Maintenance Deficiency Ob : Design & System Obsolescence En : Enforcement	
--	--	--	--	---	--	---	--

**Flood Control Project Maintenance
Levee Inspections**

Maintenance Issue Types Only, Levee Inspection Report By Mile - Spring 2024

Brannan Andrus Levee Maintenance District

Waterway	Bank	Unit Miles	Inspection Start/End	Inspector
Unit No. 02 Sacramento River	Left	11.54	04/17/2024 04/17/2024	Gregg McMillon

LM Start	1.69	Rating **	M	Issue No.	79
LM End	1.69	Issue Type +	Ma	Location *	WS
Category	Earthen Levee			GPS Latitude/Longitude	
				Start	End
Item	Trim / Thin Trees			38.175867°	38.175867°
				-121.589884°	-121.589884°
DWR ID	DWR_NA0002_02_f_2018_79				
Comment Code					
T2 : Tree or limb.					
Inspector Comment					
Remove tree limb from the waterside slope.					

Photo 1 of 1 : SP_2024_NA0002_63_79_20240301_00037.jpg



View of the tree limb on the WS slope (Fall 2022).

LM Start	1.78	Rating **	M	Issue No.	49
LM End	1.78	Issue Type +	Ma	Location *	WS
Category	Earthen Levee			GPS Latitude/Longitude	
				Start	End
Item	Trim / Thin Trees			38.174762°	38.174762°
				-121.590582°	-121.590582°
DWR ID	DWR_NA0002_02_f_2021_49				
Comment Code					
T2 : Tree or limb.					
Inspector Comment					

No Photos

LM Start	1.81	Rating **	U	Issue No.	96
LM End	1.81	Issue Type +	Ma	Location *	LS
Category	Earthen Levee			GPS Latitude/Longitude	
				Start	End
Item	Trim / Thin Trees			38.174316°	38.174316°
				-121.590830°	-121.590830°
DWR ID	DWR_NA0002_02_s_2021_96				
Comment Code					
T2 : Tree or limb.					
Inspector Comment					
Remove large downed tree branch on landside slope.					

Photo 1 of 1 : SP_2024_NA0002_63_96_20240301_00048.jpg



Downed tree limb on the landside hinge (Spring 2021).

* Location LS : Land Side N/A : Not Applicable WS : Water Side CR : Crown		** Rating A : Acceptable M : Minimally Acceptable U : Unacceptable		+ Issue Type Ma : Maintenance Deficiency Ob : Design & System Obsolescence En : Enforcement	
		N : Not Inspected/Rated C : Corrected A/W : Acceptable but Monitor & Maintain			

**Flood Control Project Maintenance
Levee Inspections**

Maintenance Issue Types Only, Levee Inspection Report By Mile - Spring 2024

Brannan Andrus Levee Maintenance District

Waterway	Bank	Unit Miles	Inspection Start/End	Inspector
Unit No. 02 Sacramento River	Left	11.54	04/17/2024 04/17/2024	Gregg McMillon

LM Start	1.85	Rating **	U	Issue No.	38
LM End	1.85	Issue Type +	Ma	Location *	LS
Category	Earthen Levee			GPS Latitude/Longitude	
				Start	End
Item	Trim / Thin Trees			38.173867°	38.173867°
				-121.591099°	-121.591099°
DWR ID	DWR_NA0002_02_s_2023_38				
Comment Code					
T3 : Fallen tree with root ball.					
Inspector Comment					
Two fallen trees with root balls on the LS slope.					

Photo 1 of 1 : SP_2024_NA0002_63_38_20240301_00012.jpg



View of the fallen trees with root balls on the LS slope (Spring 2023).

LM Start	1.89	Rating **	U	Issue No.	137
LM End	1.89	Issue Type +	Ma	Location *	LS
Category	Earthen Levee			GPS Latitude/Longitude	
				Start	End
Item	Trim / Thin Trees			38.173273°	38.173273°
				-121.591468°	-121.591468°
DWR ID	DWR_NA0002_02_f_2021_137				
Comment Code					
T2 : Tree or limb.					
Inspector Comment					
Remove large downed tree limb on landside slope.					

Photo 1 of 1 : SP_2024_NA0002_63_137_20240301_00062.jpg



View of the tree on the LS slope (Fall 2022).

LM Start	1.97	Rating **	C	Issue No.	48
LM End	1.97	Issue Type +	Ma	Location *	WS
Category	Earthen Levee			GPS Latitude/Longitude	
				Start	End
Item	Trim / Thin Trees			38.172292°	38.172292°
				-121.592124°	-121.592124°
DWR ID	DWR_NA0002_02_f_2020_48				
Comment Code					
T2 : Tree or limb.					
Inspector Comment					

No Photos

* Location		** Rating		+ Issue Type	
LS : Land Side	N/A : Not Applicable	A : Acceptable	N : Not Inspected/Rated	Ma : Maintenance Deficiency	
WS : Water Side		M : Minimally Acceptable	C : Corrected	Ob : Design & System Obsolescence	
CR : Crown		U : Unacceptable	A/W : Acceptable but Monitor & Maintain	En : Enforcement	

**Flood Control Project Maintenance
Levee Inspections**

Maintenance Issue Types Only, Levee Inspection Report By Mile - Spring 2024

Brannan Andrus Levee Maintenance District

Waterway	Bank	Unit Miles	Inspection Start/End	Inspector
Unit No. 02 Sacramento River	Left	11.54	04/17/2024 04/17/2024	Gregg McMillon

LM Start	1.99	Rating **	C	Issue No.	95
LM End	1.99	Issue Type +	Ma	Location *	LS
Category	Earthen Levee			GPS Latitude/Longitude	
				Start	End
Item	Trim / Thin Trees			38.171939°	38.171939°
				-121.592337°	-121.592337°
DWR ID	DWR_NA0002_02_s_2021_95				
Comment Code					
T2 : Tree or limb.					
Inspector Comment					

No Photos

LM Start	2.00	Rating **	C	Issue No.	37
LM End	2.00	Issue Type +	Ma	Location *	LS
Category	Earthen Levee			GPS Latitude/Longitude	
				Start	End
Item	Trim / Thin Trees			38.171888°	38.171888°
				-121.592382°	-121.592382°
DWR ID	DWR_NA0002_02_s_2023_37				
Comment Code					
T2 : Tree or limb.					
Inspector Comment					

No Photos

LM Start	2.13	Rating **	M	Issue No.	136
LM End	2.13	Issue Type +	Ma	Location *	LS
Category	Earthen Levee			GPS Latitude/Longitude	
				Start	End
Item	Animal Control			38.170217°	38.170217°
				-121.593602°	-121.593602°
DWR ID	DWR_NA0002_02_f_2021_136				
Comment Code					
A1 : Exterminate rodents and backfill and compact or grout burrows.					
Inspector Comment					
Squirrel holes causing additional rilling and erosion to occur.					

Photo 1 of 1 : SP_2024_NA0002_63_136_20240301_00061.jpg



View of animal holes in the landside slope (Fall 2021).

* Location LS : Land Side N/A : Not Applicable WS : Water Side CR : Crown	** Rating A : Acceptable M : Minimally Acceptable U : Unacceptable	N : Not Inspected/Rated C : Corrected A/W : Acceptable but Monitor & Maintain	+ Issue Type Ma : Maintenance Deficiency Ob : Design & System Obsolescence En : Enforcement
--	--	---	---

**Flood Control Project Maintenance
Levee Inspections**

Maintenance Issue Types Only, Levee Inspection Report By Mile - Spring 2024

Brannan Andrus Levee Maintenance District

Waterway	Bank	Unit Miles	Inspection Start/End	Inspector
Unit No. 02 Sacramento River	Left	11.54	04/17/2024 04/17/2024	Gregg McMillon

LM Start	2.16	Rating **	M	Issue No.	120
LM End	2.16	Issue Type +	Ma	Location *	LS
Category	Earthen Levee			GPS Latitude/Longitude	
				Start	End
Item	Trim / Thin Trees			38.169853°	38.169853°
				-121.593828°	-121.593828°
DWR ID	DWR_NA0002_02_f_2016_120				
Comment Code					
T1 : Trim and thin trees to at least five feet above ground level to allow visibility of the ground and room to flood fight.					
Inspector Comment					
Fig tree on the landside slope.					

Photo 1 of 1 : SP_2024_NA0002_63_120_20240301_00056.jpg



View of the fig tree on the LS slope (Fall 2022).

LM Start	2.34	Rating **	M	Issue No.	25
LM End	2.38	Issue Type +	Ma	Location *	LS
Category	Earthen Levee			GPS Latitude/Longitude	
				Start	End
Item	Trim / Thin Trees			38.167627°	38.167152°
				-121.595538°	-121.595997°
DWR ID	DWR_NA0002_02_s_2012_25				
Comment Code					
T1 : Trim and thin trees to at least five feet above ground level to allow visibility of the ground and room to flood fight.					
Inspector Comment					

Photo 1 of 1 : SP_2024_NA0002_63_25_20240301_00005.jpg



View of the trees along the LS shoulder (Fall 2022).

LM Start	2.42	Rating **	U	Issue No.	99
LM End	2.42	Issue Type +	Ma	Location *	LS
Category	Earthen Levee			GPS Latitude/Longitude	
				Start	End
Item	Vegetation			38.166772°	38.166772°
				-121.596667°	-121.596667°
DWR ID	DWR_NA0002_02_s_2014_99				
Comment Code					
V2 : Remove the wild growth and woody vegetation other than native grasses from the levee slopes.					
Inspector Comment					
Dense willows on the landside slope.					

Photo 1 of 1 : SP_2024_NA0002_63_99_20240301_00051.jpg



View of the vegetation on the LS slope (Fall 2022).

* Location		** Rating		+ Issue Type	
LS : Land Side	N/A : Not Applicable	A : Acceptable	N : Not Inspected/Rated	Ma : Maintenance Deficiency	
WS : Water Side		M : Minimally Acceptable	C : Corrected	Ob : Design & System Obsolescence	
CR : Crown		U : Unacceptable	A/W : Acceptable but Monitor & Maintain	En : Enforcement	

**Flood Control Project Maintenance
Levee Inspections**

Maintenance Issue Types Only, Levee Inspection Report By Mile - Spring 2024

Brannan Andrus Levee Maintenance District

Waterway	Bank	Unit Miles	Inspection Start/End	Inspector
Unit No. 02 Sacramento River	Left	11.54	04/17/2024 04/17/2024	Gregg McMillon

LM Start	2.54	Rating **	U	Issue No.	174
LM End	2.54	Issue Type +	Ma	Location *	
Category	Supplemental			GPS Latitude/Longitude	
				Start	End
Item	DWR UCIP LMA Responsibility			38.165980°	38.165980°
				-121.598520°	-121.598520°
DWR ID	21879				
Comment Code					
Inspector Comment					
DS_ID:21879 FS_ID:75100 EP_NO: N/A Repair Type: Urgent EVAL Issue: 1, Pipe Integrity Crossing Status: Found UCIP Comments: 04/19/2022 Record updated from Non-Urgent to Urgent. Flood risk to landside due to the tunnel is open on both ends. DMP internal video inspection has found integrity issues. LOF of crossing is between 5 and 6. Crossing will be monitored until funding becomes available to address the issues. No permit has been identified authorizing pipe. (O.Yakimov - DWR UCIP) 07/12/2018 Tunnel is open on both sides. No integrity issue observed, therefore crossing downgraded to "Non-Urgent". (O.Yakimov-DWR UCIP)10/24/2016 same as previous inspection culvert is open on both ends. WS blocked by blankets -- WS structure is being used as a shelter. (O. Magana - DWR UCIP)04/18/2013 Culvert open on both ends. Needs to be abandoned properly. (W. Wylie - DWR UCIP) FIELD_STRUCT_DESC: 42-inch by 42-inch open reinforced concrete tunnel through the levee, 6 feet below the crown. [Additional Reference(s): DWR Levee Log, 2005 (HLM 2.54), listed as abandoned 3-feet by 3.5-feet open concrete culvert. USACE Sacramento O&M Manual 103, June 1954, (RM 18.16). USACE As-Built Drawing No. 06-13-1100, January 1933, Sheet 18, RM 18.16, listed as 3.5-foot by 3.5-foot concrete box]. FS Date: 4/19/2022 11:02:31 AM					

LM Start	2.54	Rating **	U	Issue No.	174 (cont)
LM End	2.54	Issue Type +	Ma	Location *	

Photo 1 of 3 : UCIP_SP_2024_75100_112246.jpg



Water-Side: View of the waterward end of tunnel

Photo 2 of 3 : UCIP_SP_2024_75100_112250.jpg



Land-Side: View of the landward end of tunnel

* Location LS : Land Side N/A : Not Applicable WS : Water Side CR : Crown	** Rating A : Acceptable M : Minimally Acceptable U : Unacceptable	N : Not Inspected/Rated C : Corrected A/W : Acceptable but Monitor & Maintain	+ Issue Type Ma : Maintenance Deficiency Ob : Design & System Obsolescence En : Enforcement
--	--	---	---

**Flood Control Project Maintenance
Levee Inspections**

Maintenance Issue Types Only, Levee Inspection Report By Mile - Spring 2024

Brannan Andrus Levee Maintenance District

Waterway	Bank	Unit Miles	Inspection Start/End	Inspector
Unit No. 02 Sacramento River	Left	11.54	04/17/2024 04/17/2024	Gregg McMillon

LM Start	2.54	Rating **	U	Issue No.	174 (cont)
LM End	2.54	Issue Type +	Ma	Location *	
Category	Supplemental			GPS Latitude/Longitude	
				Start	End
Item	DWR UCIP LMA Responsibility			38.165980°	38.165980°
				-121.598520°	-121.598520°
DWR ID	21879				

Photo 3 of 3 : UCIP_SP_2024_75100_112247.jpg



Overview of Levee: Photo taken inside of tunnel

LM Start	2.56	Rating **	M	Issue No.	82
LM End	2.56	Issue Type +	Ma	Location *	WS
Category	Earthen Levee			GPS Latitude/Longitude	
				Start	End
Item	Erosion / Foot Traffic			38.165898°	38.165898°
				-121.598888°	-121.598888°
DWR ID	DWR_NA0002_02_f_2017_82				
Comment Code					
E3 : Repair the levee slope damaged by foot traffic and prevent access where possible.					
Inspector Comment					
There is a footpath digging into the levee slope.					

Photo 1 of 1 : SP_2024_NA0002_63_82_20240301_00039.jpg



View of the footpath down the WS slope (Spring 2023).

* Location LS : Land Side N/A : Not Applicable WS : Water Side CR : Crown		** Rating A : Acceptable M : Minimally Acceptable U : Unacceptable N : Not Inspected/Rated C : Corrected A/W : Acceptable but Monitor & Maintain		+ Issue Type Ma : Maintenance Deficiency Ob : Design & System Obsolescence En : Enforcement	
--	--	---	--	---	--

**Flood Control Project Maintenance
Levee Inspections****Maintenance Issue Types Only, Levee Inspection Report By Mile - Spring 2024****Brannan Andrus Levee Maintenance District**

Waterway	Bank	Unit Miles	Inspection Start/End	Inspector
Unit No. 02 Sacramento River	Left	11.54	04/17/2024 04/17/2024	Gregg McMillon

LM Start	2.57	Rating **	U	Issue No.	175	
LM End	2.57	Issue Type +	Ma	Location *		
Category	Supplemental			GPS Latitude/Longitude		
				Start	End	
Item	DWR UCIP LMA Responsibility			38.165775°	38.165775°	
				-121.599048°	-121.599048°	
DWR ID	21880					
Comment Code						
Inspector Comment						
DS_ID:21880 FS_ID:75101 EP_NO: N/A Repair Type: Urgent EVAL Issue: 3b, Flood Risk Crossing Status: Found UCIP Comments: 04/19/2022 Record updated from Non-Urgent to Urgent. Flood risk to landside due to the tunnel is open on both ends. DMP internal video inspection has found pipe integrity issues. LOF of crossing is greater than or equal to 4.1 and less than 5. Crossing will be monitored until funding becomes available for rehabilitation. No permit has been identified authorizing pipe. (O.Yakimov - DWR UCIP) 07/12/2018 Tunnel is open on both sides. No integrity issue observed, therefore crossing downgraded to "Non-Urgent". (O.Yakimov-DWR UCIP)10/24/2016 same as previous inspection concrete box culvert will need to be abandoned properly. (O. Magana - DWR UCIP)04/18/2013 tunnel should be abandoned properly. (W. Wylie - DWR UCIP) FIELD_STRUCT_DESC: 48-inch by 48-inch reinforced concrete tunnel through the levee, 6.5 feet below the crown. [Additional Reference(s): DWR Levee Log, 2005 (HLM 2.57), listed as abandoned 4-feet by 4-feet open concrete culvert. USACE Sacramento O&M Manual 103, June 1954, (RM 18.13) 3-foot by 3-foot concrete box listed, Drawing No. 6-13-1100]. USACE As-Built Drawing No. 06-13-1100, January 1933, Sheet 18, RM 18.13, listed as 3-foot by 3-foot concrete box]. FS Date: 4/19/2022 11:22:54 AM						

LM Start	2.57	Rating **	U	Issue No.	175 (cont)
LM End	2.57	Issue Type +	Ma	Location *	

Photo 1 of 3 : UCIP_SP_2024_75101_112251.jpg



Land-Side: View of the landward end of tunnel

Photo 2 of 3 : UCIP_SP_2024_75101_112254.jpg



Water-Side: View of the waterward end of tunnel

* Location	** Rating	+ Issue Type
LS : Land Side WS : Water Side CR : Crown	A : Acceptable M : Minimally Acceptable U : Unacceptable	Ma : Maintenance Deficiency Ob : Design & System Obsolescence En : Enforcement
N/A : Not Applicable	N : Not Inspected/Rated C : Corrected A/W : Acceptable but Monitor & Maintain	

**Flood Control Project Maintenance
Levee Inspections**

Maintenance Issue Types Only, Levee Inspection Report By Mile - Spring 2024

Brannan Andrus Levee Maintenance District

Waterway	Bank	Unit Miles	Inspection Start/End	Inspector
Unit No. 02 Sacramento River	Left	11.54	04/17/2024 04/17/2024	Gregg McMillon

LM Start	2.57	Rating **	U	Issue No.	175 (cont)
LM End	2.57	Issue Type +	Ma	Location *	
Category	Supplemental			GPS Latitude/Longitude	
				Start	End
Item	DWR UCIP LMA Responsibility			38.165775°	38.165775°
				-121.599048°	-121.599048°
DWR ID	21880				

Photo 3 of 3 : UCIP_SP_2024_75101_112253.jpg



Water-Side: View of levee slope looking from crown. Concrete box on levee shoulder

LM Start	2.58	Rating **	U	Issue No.	71
LM End	2.63	Issue Type +	Ma	Location *	WS
Category	Supplemental			GPS Latitude/Longitude	
				Start	End
Item	2018 USACE Erosion Survey			38.165945°	38.165498°
				-121.599345°	-121.600080°
DWR ID	DWR_NA0002_02_s_2022_71				
Comment Code					
Inspector Comment					
2018 Site ID: SAC 18.1 L					
Status: Critical					
2018 Field Notes: Increased vegetation made it difficult to see changes.					
Site History: 2009 - Short reach of vertical bank at the toe. 2010 - Large tree is getting ready to fall in. 2015 - Freshly exposed tree roots.					
2017 - Upgraded to CRITICAL. Vertical slope face behind a tree that is likely to pop-out soon.					

Photo 1 of 2 : SP_2024_NA0002_63_71_20240301_00032.jpg



USACE 2018 Erosion Photo #1

* Location LS: Land Side N/A: Not Applicable WS: Water Side CR: Crown	** Rating A: Acceptable M: Minimally Acceptable U: Unacceptable	N: Not Inspected/Rated C: Corrected A/W: Acceptable but Monitor & Maintain	+ Issue Type Ma: Maintenance Deficiency Ob: Design & System Obsolescence En: Enforcement
--	---	--	--

**Flood Control Project Maintenance
Levee Inspections**

Maintenance Issue Types Only, Levee Inspection Report By Mile - Spring 2024

Brannan Andrus Levee Maintenance District

Waterway	Bank	Unit Miles	Inspection Start/End	Inspector
Unit No. 02 Sacramento River	Left	11.54	04/17/2024 04/17/2024	Gregg McMillon

LM Start	2.58	Rating **	U	Issue No.	71 (cont)
LM End	2.63	Issue Type +	Ma	Location *	WS
Category	Supplemental			GPS Latitude/Longitude	
				Start	End
Item	2018 USACE Erosion Survey			38.165945°	38.165498°
				-121.599345°	-121.600080°
DWR ID	DWR_NA0002_02_s_ 2022_71				

Photo 2 of 2 : SP_2024_NA0002_63_71_20240301_00033.jpg



USACE 2018 Erosion Photo #2

LM Start	2.63	Rating **	U	Issue No.	104
LM End	2.66	Issue Type +	Ma	Location *	LS
Category	Earthen Levee			GPS Latitude/Longitude	
				Start	End
Item	Animal Control			38.165310°	38.165068°
				-121.599987°	-121.600445°
DWR ID	DWR_NA0002_02_s_ 2022_104				

Photo 1 of 1 : SP_2024_NA0002_63_104_20240301_00052.jpg



View of animal holes on the landside slope (Spring 2022).

Comment Code					
A1 : Exterminate rodents and backfill and compact or grout burrows.					
Inspector Comment					

* Location LS : Land Side N/A : Not Applicable WS : Water Side CR : Crown	** Rating A : Acceptable M : Minimally Acceptable U : Unacceptable	N : Not Inspected/Rated C : Corrected A/W : Acceptable but Monitor & Maintain	+ Issue Type Ma : Maintenance Deficiency Ob : Design & System Obsolescence En : Enforcement
--	--	---	---

**Flood Control Project Maintenance
Levee Inspections**

Maintenance Issue Types Only, Levee Inspection Report By Mile - Spring 2024

Brannan Andrus Levee Maintenance District

Waterway	Bank	Unit Miles	Inspection Start/End	Inspector
Unit No. 02 Sacramento River	Left	11.54	04/17/2024 04/17/2024	Gregg McMillon

LM Start	2.84	Rating **	U	Issue No.	177
LM End	2.84	Issue Type +	Ma	Location *	
Category	Supplemental			GPS Latitude/Longitude	
				Start	End
Item	DWR UCIP LMA Responsibility			38.163850°	38.163850°
				-121.603317°	-121.603317°
DWR ID	21882				
Comment Code					
Inspector Comment					
DS_ID:21882 FS_ID:75147 EP_NO: N/A Repair Type: Urgent EVAL Issue: 1, Pipe Integrity Crossing Status: Found UCIP Comments: 04/19/2022 Record updated from Non-Urgent to Urgent. Tunnel is open on both ends. DMP internal video inspection has found pipe integrity issues. LOF of crossing is between 5 and 6. Crossing will be monitored until funding becomes available to address the issues. No permit has been identified authorizing pipe. (O.Yakimov - DWR UCIP) 07/12/2018 Tunnel is open on both ends. No integrity issue observed, therefore crossing downgraded to "Non-Urgent". (O.Yakimov-DWR UCIP)10/24/2016 same as previous inspection tunnel is opened on both ends. (O. Magana - DWR UCIP)04/18/2013 Tunnel open on both ends and should be abandoned properly. (W. Wylie - DWR UCIP) FIELD_STRUCT_DESC: 48-inch by 72-inch reinforced concrete tunnel through the levee, 1 foot below the crown. [Additional Reference(s): DWR Levee Log, 2005 (HLM 2.82), listed as abandoned 4-feet by 4.5-feet open concrete culvert. USACE Sacramento O&M Manual 103, June 1954, (RM 17.89) 48-inch by 52-inch concrete box listed, Drawing No. 6-13-1100]. USACE As-Built Drawing No. 06-13-1100, January 1933, Sheet 18, RM 17.89]. FS Date: 4/19/2022 2:01:34 PM					

LM Start	2.84	Rating **	U	Issue No.	177 (cont)
LM End	2.84	Issue Type +	Ma	Location *	

Photo 1 of 3 : UCIP_SP_2024_75147_112322.jpg



Land-Side: View of the landward end of tunnel

Photo 2 of 3 : UCIP_SP_2024_75147_112327.jpg



Water-Side: View of the waterward end of tunnel

* Location		** Rating		+ Issue Type	
LS: Land Side	N/A: Not Applicable	A: Acceptable	N: Not Inspected/Rated	Ma: Maintenance Deficiency	
WS: Water Side		M: Minimally Acceptable	C: Corrected	Ob: Design & System Obsolescence	
CR: Crown		U: Unacceptable	A/W: Acceptable but Monitor & Maintain	En: Enforcement	

**Flood Control Project Maintenance
Levee Inspections**

Maintenance Issue Types Only, Levee Inspection Report By Mile - Spring 2024

Brannan Andrus Levee Maintenance District

Waterway	Bank	Unit Miles	Inspection Start/End	Inspector
Unit No. 02 Sacramento River	Left	11.54	04/17/2024 04/17/2024	Gregg McMillon

LM Start	2.84	Rating **	U	Issue No.	177 (cont)
LM End	2.84	Issue Type +	Ma	Location *	
Category	Supplemental			GPS Latitude/Longitude	
				Start	End
Item	DWR UCIP LMA Responsibility			38.163850°	38.163850°
				-121.603317°	-121.603317°
DWR ID	21882				

Photo 3 of 3 : UCIP_SP_2024_75147_112323.jpg



Overview of Levee: Photo taken inside of the tunnel

LM Start	3.00	Rating **	M	Issue No.	134
LM End	3.00	Issue Type +	Ma	Location *	LS
Category	Earthen Levee			GPS Latitude/Longitude	
				Start	End
Item	Trim / Thin Trees			38.163002°	38.163002°
				-121.606060°	-121.606060°
DWR ID	DWR_NA0002_02_f_2021_134				
Comment Code					
T1 : Trim and thin trees to at least five feet above ground level to allow visibility of the ground and room to flood fight.					
Inspector Comment					

No Photos

LM Start	3.08	Rating **	C	Issue No.	133
LM End	3.08	Issue Type +	Ma	Location *	LS
Category	Earthen Levee			GPS Latitude/Longitude	
				Start	End
Item	Trim / Thin Trees			38.162761°	38.162761°
				-121.607549°	-121.607549°
DWR ID	DWR_NA0002_02_f_2021_133				
Comment Code					
T1 : Trim and thin trees to at least five feet above ground level to allow visibility of the ground and room to flood fight.					
Inspector Comment					

No Photos

* Location LS : Land Side N/A : Not Applicable WS : Water Side CR : Crown		** Rating A : Acceptable N : Not Inspected/Rated M : Minimally Acceptable C : Corrected U : Unacceptable A/W : Acceptable but Monitor & Maintain		+ Issue Type Ma : Maintenance Deficiency Ob : Design & System Obsolescence En : Enforcement	
--	--	---	--	---	--

**Flood Control Project Maintenance
Levee Inspections**

Maintenance Issue Types Only, Levee Inspection Report By Mile - Spring 2024

Brannan Andrus Levee Maintenance District

Waterway	Bank	Unit Miles	Inspection Start/End	Inspector
Unit No. 02 Sacramento River	Left	11.54	04/17/2024 04/17/2024	Gregg McMillon

LM Start	3.12	Rating **	M	Issue No.	53
LM End	3.16	Issue Type +	Ma	Location *	CR
Category	Earthen Levee			GPS Latitude/Longitude	
				Start	End
Item	Vegetation			38.162738°	38.162551°
				-121.608169°	-121.608912°
DWR ID	DWR_NA0002_02_s_2020_53				
Comment Code					
V3 : Keep the crown roadway free of vegetation.					
Inspector Comment					

No Photos

LM Start	3.57	Rating **	C	Issue No.	91
LM End	3.57	Issue Type +	Ma	Location *	LS
Category	Earthen Levee			GPS Latitude/Longitude	
				Start	End
Item	Trim / Thin Trees			38.162653°	38.162653°
				-121.616348°	-121.616348°
DWR ID	DWR_NA0002_02_f_2021_91				
Comment Code					
T1 : Trim and thin trees to at least five feet above ground level to allow visibility of the ground and room to flood fight.					
Inspector Comment					

No Photos

LM Start	3.92	Rating **	U	Issue No.	98
LM End	3.92	Issue Type +	Ma	Location *	LS
Category	Earthen Levee			GPS Latitude/Longitude	
				Start	End
Item	Trim / Thin Trees			38.164019°	38.164019°
				-121.622642°	-121.622642°
DWR ID	DWR_NA0002_02_s_2019_98				
Comment Code					
T1 : Trim and thin trees to at least five feet above ground level to allow visibility of the ground and room to flood fight.					
Inspector Comment					
Remove arundo from the landside slope.					

Photo 1 of 1 : SP_2024_NA0002_63_98_20240301_00050.jpg



View of the arundo on the LS slope (Fall 2022).

* Location LS : Land Side N/A : Not Applicable WS : Water Side CR : Crown	** Rating A : Acceptable M : Minimally Acceptable U : Unacceptable	N : Not Inspected/Rated C : Corrected A/W : Acceptable but Monitor & Maintain	+ Issue Type Ma : Maintenance Deficiency Ob : Design & System Obsolescence En : Enforcement
--	--	---	---

**Flood Control Project Maintenance
Levee Inspections**

Maintenance Issue Types Only, Levee Inspection Report By Mile - Spring 2024

Brannan Andrus Levee Maintenance District

Waterway	Bank	Unit Miles	Inspection Start/End	Inspector
Unit No. 02 Sacramento River	Left	11.54	04/17/2024 04/17/2024	Gregg McMillon

LM Start	4.29	Rating **	U	Issue No.	169
LM End	4.29	Issue Type +	Ma	Location *	LS
Category	Earthen Levee			GPS Latitude/Longitude	
				Start	End
Item	Trim / Thin Trees			38.166258°	38.166258°
				-121.628717°	-121.628717°
DWR ID	DWR_NA0002_02_f_2018_169				
Comment Code					
T2 : Tree or limb.					
Inspector Comment					
Remove the downed tree limb from the landside slope.					

Photo 1 of 1 : SP_2024_NA0002_63_169_20240301_00069.jpg



View of downed tree limb on the landside slope (Spring 2021).

LM Start	4.81	Rating **	U	Issue No.	128
LM End	4.99	Issue Type +	Ma	Location *	LS
Category	Earthen Levee			GPS Latitude/Longitude	
				Start	End
Item	Animal Control			38.168831°	38.169583°
				-121.637619°	-121.640698°
DWR ID	DWR_NA0002_02_f_2019_128				
Comment Code					
A1 : Exterminate rodents and backfill and compact or grout burrows.					
Inspector Comment					
There are multiple large squirrel holes on the landside slope.					

Photo 1 of 1 : SP_2024_NA0002_63_128_20240301_00059.jpg



View of multiple large squirrel holes in landside slope (Fall 2019).

LM Start	5.01	Rating **	U	Issue No.	163
LM End	5.01	Issue Type +	Ma	Location *	LS
Category	Earthen Levee			GPS Latitude/Longitude	
				Start	End
Item	Trim / Thin Trees			38.169750°	38.169750°
				-121.641107°	-121.641107°
DWR ID	DWR_NA0002_02_f_2019_163				
Comment Code					
T1 : Trim and thin trees to at least five feet above ground level to allow visibility of the ground and room to flood fight.					
Inspector Comment					
Trim the fig tree on the landside slope.					

Photo 1 of 1 : SP_2024_NA0002_63_163_20240301_00065.jpg



View of the fig tree on the LS slope (Fall 2022).

* Location LS : Land Side N/A : Not Applicable WS : Water Side CR : Crown		** Rating A : Acceptable M : Minimally Acceptable U : Unacceptable N : Not Inspected/Rated C : Corrected A/W : Acceptable but Monitor & Maintain		+ Issue Type Ma : Maintenance Deficiency Ob : Design & System Obsolescence En : Enforcement	
--	--	---	--	---	--

**Flood Control Project Maintenance
Levee Inspections**

Maintenance Issue Types Only, Levee Inspection Report By Mile - Spring 2024

Brannan Andrus Levee Maintenance District

Waterway	Bank	Unit Miles	Inspection Start/End	Inspector
Unit No. 02 Sacramento River	Left	11.54	04/17/2024 04/17/2024	Gregg McMillon

LM Start	5.25	Rating **	U	Issue No.	124
LM End	5.29	Issue Type +	Ma	Location *	LS
Category	Earthen Levee			GPS Latitude/Longitude	
				Start	End
Item	Animal Control			38.171928°	38.171873°
				-121.644455°	-121.645082°
DWR ID	DWR_NA0002_02_f_2017_124				
Comment Code					
A1 : Exterminate rodents and backfill and compact or grout burrows.					
Inspector Comment					
Multiple active rodent holes on the landside slope.					

Photo 1 of 1 : SP_2024_NA0002_63_124_20240301_00058.jpg



View looking downstream at animal holes in the landside slope (Fall 2020).

LM Start	5.29	Rating **	M	Issue No.	54
LM End	6.26	Issue Type +	Ma	Location *	LS
Category	Earthen Levee			GPS Latitude/Longitude	
				Start	End
Item	Vegetation			38.171858°	38.174016°
				-121.645155°	-121.662075°
DWR ID	DWR_NA0002_02_s_2024_54				
Comment Code					
V1 : Control annual grass and weeds on the levee slopes and easements.					
Inspector Comment					

No Photos

LM Start	5.32	Rating **	U	Issue No.	132
LM End	5.35	Issue Type +	Ma	Location *	LS
Category	Earthen Levee			GPS Latitude/Longitude	
				Start	End
Item	Trim / Thin Trees			38.171844°	38.171839°
				-121.645718°	-121.646163°
DWR ID	DWR_NA0002_02_f_2021_132				
Comment Code					
T3 : Fallen tree with root ball.					
Inspector Comment					
Remove two downed trees on landside slope.					

Photo 1 of 1 : SP_2024_NA0002_63_132_20240301_00060.jpg



View looking downstream at two downed trees on the landside slope (Fall 2021).

* Location LS : Land Side N/A : Not Applicable WS : Water Side CR : Crown		** Rating A : Acceptable M : Minimally Acceptable U : Unacceptable		+ Issue Type Ma : Maintenance Deficiency Ob : Design & System Obsolescence En : Enforcement	
		N : Not Inspected/Rated C : Corrected A/W : Acceptable but Monitor & Maintain			

**Flood Control Project Maintenance
Levee Inspections**

Maintenance Issue Types Only, Levee Inspection Report By Mile - Spring 2024

Brannan Andrus Levee Maintenance District

Waterway	Bank	Unit Miles	Inspection Start/End	Inspector
Unit No. 02 Sacramento River	Left	11.54	04/17/2024 04/17/2024	Gregg McMillon

LM Start	5.67	Rating **	C	Issue No.	131
LM End	5.67	Issue Type +	Ma	Location *	LS
Category	Earthen Levee			GPS Latitude/Longitude	
				Start	End
Item	Trim / Thin Trees			38.172377°	38.172377°
				-121.651956°	-121.651956°
DWR ID	DWR_NA0002_02_f_2021_131				
Comment Code					
T1 : Trim and thin trees to at least five feet above ground level to allow visibility of the ground and room to flood fight.					
Inspector Comment					

No Photos

LM Start	6.07	Rating **	A/W	Issue No.	122
LM End	6.07	Issue Type +	Ma	Location *	LS
Category	Earthen Levee			GPS Latitude/Longitude	
				Start	End
Item	Animal Control			38.174655°	38.174655°
				-121.658643°	-121.658643°
DWR ID	DWR_NA0002_02_f_2019_122				
Comment Code					
A1 : Exterminate rodents and backfill and compact or grout burrows.					
Inspector Comment					
There were multiple squirrel holes at this location, however the LMA implemented a baiting program. Monitor the area for new rodent activity.					

No Photos

LM Start	6.12	Rating **	M	Issue No.	103
LM End	6.18	Issue Type +	Ma	Location *	LS
Category	Earthen Levee			GPS Latitude/Longitude	
				Start	End
Item	Vegetation			38.174670°	38.174413°
				-121.659592°	-121.660623°
DWR ID	DWR_NA0002_02_f_2015_103				
Comment Code					
V4 : Elderberries are blocking visibility and flood fight capability.					
Inspector Comment					

No Photos

* Location LS : Land Side N/A : Not Applicable WS : Water Side CR : Crown	** Rating A : Acceptable M : Minimally Acceptable U : Unacceptable	N : Not Inspected/Rated C : Corrected A/W : Acceptable but Monitor & Maintain	+ Issue Type Ma : Maintenance Deficiency Ob : Design & System Obsolescence En : Enforcement
--	--	---	---

**Flood Control Project Maintenance
Levee Inspections**

Maintenance Issue Types Only, Levee Inspection Report By Mile - Spring 2024

Brannan Andrus Levee Maintenance District

Waterway	Bank	Unit Miles	Inspection Start/End	Inspector
Unit No. 02 Sacramento River	Left	11.54	04/17/2024 04/17/2024	Gregg McMillon

LM Start	6.12	Rating **	U	Issue No.	130
LM End	6.12	Issue Type +	Ma	Location *	WS
Category	Earthen Levee			GPS Latitude/Longitude	
				Start	End
Item	Vegetation			38.174625°	38.174625°
				-121.659661°	-121.659661°
DWR ID	DWR_NA0002_02_f_2018_130				
Comment Code					
V4 : Elderberries are blocking visibility and flood fight capability.					
Inspector Comment					

No Photos

LM Start	6.24	Rating **	M	Issue No.	84
LM End	6.24	Issue Type +	Ma	Location *	LS
Category	Earthen Levee			GPS Latitude/Longitude	
				Start	End
Item	Trim / Thin Trees			38.174143°	38.174143°
				-121.661659°	-121.661659°
DWR ID	DWR_NA0002_02_f_2017_84				
Comment Code					
T2 : Tree or limb.					
Inspector Comment					
Dead tree on the landside.					

Photo 1 of 1 : SP_2024_NA0002_63_84_20240301_00040.jpg



View looking downslope at burned tree on the landside slope (Fall 2020).

LM Start	6.30	Rating **	M	Issue No.	83
LM End	6.75	Issue Type +	Ma	Location *	LS
Category	Earthen Levee			GPS Latitude/Longitude	
				Start	End
Item	Vegetation			38.173776°	38.169656°
				-121.662744°	-121.668964°
DWR ID	DWR_NA0002_02_s_2024_83				
Comment Code					
V1 : Control annual grass and weeds on the levee slopes and easements.					
Inspector Comment					

No Photos

* Location LS : Land Side N/A : Not Applicable WS : Water Side CR : Crown	** Rating A : Acceptable M : Minimally Acceptable U : Unacceptable	N : Not Inspected/Rated C : Corrected A/W : Acceptable but Monitor & Maintain	+ Issue Type Ma : Maintenance Deficiency Ob : Design & System Obsolescence En : Enforcement
--	--	---	---

**Flood Control Project Maintenance
Levee Inspections**

Maintenance Issue Types Only, Levee Inspection Report By Mile - Spring 2024

Brannan Andrus Levee Maintenance District

Waterway	Bank	Unit Miles	Inspection Start/End	Inspector
Unit No. 02 Sacramento River	Left	11.54	04/17/2024 04/17/2024	Gregg McMillon

LM Start	6.32	Rating **	U	Issue No.	13
LM End	6.32	Issue Type +	Ma	Location *	LS
Category	Earthen Levee			GPS Latitude/Longitude	
				Start	End
Item	Trim / Thin Trees			38.173697°	38.173697°
				-121.663082°	-121.663082°
DWR ID	DWR_NA0002_02_s_2017_13				
Comment Code					
T2 : Tree or limb.					
Inspector Comment					
Fallen tree on the landside slope.					

Photo 1 of 1 : SP_2024_NA0002_63_13_20240301_00004.jpg



View of the fallen tree on the LS slope (Fall 2022).

LM Start	6.46	Rating **	M	Issue No.	118
LM End	6.46	Issue Type +	Ma	Location *	LS
Category	Earthen Levee			GPS Latitude/Longitude	
				Start	End
Item	Trim / Thin Trees			38.172678°	38.172678°
				-121.665280°	-121.665280°
DWR ID	DWR_NA0002_02_f_2019_118				
Comment Code					
T1 : Trim and thin trees to at least five feet above ground level to allow visibility of the ground and room to flood fight.					
Inspector Comment					

Photo 1 of 1 : SP_2024_NA0002_63_118_20240301_00055.jpg



View of the fig tree on the LS slope (Fall 2022).

* Location LS : Land Side N/A : Not Applicable WS : Water Side CR : Crown		** Rating A : Acceptable M : Minimally Acceptable U : Unacceptable N : Not Inspected/Rated C : Corrected A/W : Acceptable but Monitor & Maintain		+ Issue Type Ma : Maintenance Deficiency Ob : Design & System Obsolescence En : Enforcement	
--	--	---	--	---	--

**Flood Control Project Maintenance
Levee Inspections**

Maintenance Issue Types Only, Levee Inspection Report By Mile - Spring 2024

Brannan Andrus Levee Maintenance District

Waterway	Bank	Unit Miles	Inspection Start/End	Inspector
Unit No. 02 Sacramento River	Left	11.54	04/17/2024 04/17/2024	Gregg McMillon

LM Start	6.98	Rating **	U	Issue No.	70
LM End	7.04	Issue Type +	Ma	Location *	WS
Category	Supplemental			GPS Latitude/Longitude	
				Start	End
Item	2018 USACE Erosion Survey			38.166583°	38.165794°
				-121.670684°	-121.671014°
DWR ID	DWR_NA0002_02_s_2022_70				
Comment Code					
Inspector Comment					
2018 Site ID: SAC 13.6 L					
Status: Critical					
2018 Field Notes: No observed change.					
Site History: 2011 - Large section of bank slumped off. 2017 - Upgraded to CRITICAL. Nearly vertical face from levee hinge. Trees with large root balls likely to fail.					

No Photos

LM Start	7.00	Rating **	C	Issue No.	117
LM End	7.00	Issue Type +	Ma	Location *	LS
Category	Earthen Levee			GPS Latitude/Longitude	
				Start	End
Item	Trim / Thin Trees			38.166249°	38.166249°
				-121.670505°	-121.670505°
DWR ID	DWR_NA0002_02_f_2021_117				
Comment Code					
T2 : Tree or limb.					
Inspector Comment					

No Photos

LM Start	7.37	Rating **	A/W	Issue No.	111
LM End	7.37	Issue Type +	Ma	Location *	LS
Category	Earthen Levee			GPS Latitude/Longitude	
				Start	End
Item	Animal Control			38.161348°	38.161348°
				-121.673138°	-121.673138°
DWR ID	DWR_NA0002_02_f_2019_111				
Comment Code					
A1 : Exterminate rodents and backfill and compact or grout burrows.					
Inspector Comment					
There were multiple squirrel holes at this location; however the LMA implemented a baiting program. Monitor the area for new rodent activity.					

No Photos

* Location LS : Land Side N/A : Not Applicable WS : Water Side CR : Crown		** Rating A : Acceptable M : Minimally Acceptable U : Unacceptable N : Not Inspected/Rated C : Corrected A/W : Acceptable but Monitor & Maintain		+ Issue Type Ma : Maintenance Deficiency Ob : Design & System Obsolescence En : Enforcement	
--	--	---	--	---	--

**Flood Control Project Maintenance
Levee Inspections****Maintenance Issue Types Only, Levee Inspection Report By Mile - Spring 2024****Brannan Andrus Levee Maintenance District**

Waterway	Bank	Unit Miles	Inspection Start/End	Inspector
Unit No. 02 Sacramento River	Left	11.54	04/17/2024 04/17/2024	Gregg McMillon

LM Start	7.57	Rating **	A/W	Issue No.	90
LM End	7.57	Issue Type +	Ma	Location *	LS
Category	Earthen Levee			GPS Latitude/Longitude	
				Start	End
Item	Slope Stability			38.159011°	38.159011°
				-121.675239°	-121.675239°
DWR ID	DWR_NA0002_02_s_2019_90				
Comment Code					
S1 : Repair slope instability.					
Inspector Comment					
Slope instability causing edge of road to crack and slip. Repairs on the shoulder were done. The added asphalt is very crumbly in some locations. Monitor for new movement.					

Photo 1 of 1 : SP_2024_NA0002_63_90_20240301_00044.jpg



View of the repaired shoulder and plastic cover on the LS slope (Spring 2023).

LM Start	7.61	Rating **	M	Issue No.	57
LM End	7.80	Issue Type +	Ma	Location *	WS
Category	Earthen Levee			GPS Latitude/Longitude	
				Start	End
Item	Vegetation			38.158532°	38.156959°
				-121.675844°	-121.678651°
DWR ID	DWR_NA0002_02_s_2024_57				
Comment Code					
V1 : Control annual grass and weeds on the levee slopes and easements.					
Inspector Comment					

No Photos

LM Start	7.61	Rating **	M	Issue No.	55
LM End	7.80	Issue Type +	Ma	Location *	LS
Category	Earthen Levee			GPS Latitude/Longitude	
				Start	End
Item	Vegetation			38.158533°	38.156952°
				-121.675855°	-121.678660°
DWR ID	DWR_NA0002_02_s_2024_55				
Comment Code					
V1 : Control annual grass and weeds on the levee slopes and easements.					
Inspector Comment					

No Photos

* Location LS : Land Side N/A : Not Applicable WS : Water Side CR : Crown		** Rating A : Acceptable M : Minimally Acceptable U : Unacceptable N : Not Inspected/Rated C : Corrected A/W : Acceptable but Monitor & Maintain		+ Issue Type Ma : Maintenance Deficiency Ob : Design & System Obsolescence En : Enforcement	
--	--	---	--	---	--

**Flood Control Project Maintenance
Levee Inspections****Maintenance Issue Types Only, Levee Inspection Report By Mile - Spring 2024****Brannan Andrus Levee Maintenance District**

Waterway	Bank	Unit Miles	Inspection Start/End	Inspector
Unit No. 02 Sacramento River	Left	11.54	04/17/2024 04/17/2024	Gregg McMillon

LM Start	7.77	Rating **	U	Issue No.	62
LM End	7.78	Issue Type +	Ma	Location *	LS
Category	Earthen Levee			GPS Latitude/Longitude	
				Start	End
Item	Trim / Thin Trees			38.157286°	38.157201°
				-121.678223°	-121.678374°
DWR ID	DWR_NA0002_02_f_2021_62				
Comment Code					
T2 : Tree or limb.					
Inspector Comment					
Remove large downed tree trunks from landside slope.					

Photo 1 of 1 : SP_2024_NA0002_63_62_20240301_00021.jpg



View of the tree limbs on the LS slope (Spring 2023).

LM Start	7.93	Rating **	U	Issue No.	72
LM End	7.93	Issue Type +	Ma	Location *	LS
Category	Earthen Levee			GPS Latitude/Longitude	
				Start	End
Item	Trim / Thin Trees			38.155487°	38.155487°
				-121.679997°	-121.679997°
DWR ID	DWR_NA0002_02_f_2021_72				
Comment Code					
T2 : Tree or limb.					
Inspector Comment					

Photo 1 of 1 : SP_2024_NA0002_63_72_20240301_00034.jpg



View of large downed tree limb on the landside hinge (Fall 2021).

LM Start	7.94	Rating **	U	Issue No.	56
LM End	7.94	Issue Type +	Ma	Location *	LS
Category	Earthen Levee			GPS Latitude/Longitude	
				Start	End
Item	Vegetation			38.155375°	38.155375°
				-121.680065°	-121.680065°
DWR ID	DWR_NA0002_02_f_2020_56				
Comment Code					
V4 : Elderberries are blocking visibility and flood fight capability.					
Inspector Comment					

No Photos

* Location LS : Land Side N/A : Not Applicable WS : Water Side CR : Crown		** Rating A : Acceptable M : Minimally Acceptable U : Unacceptable N : Not Inspected/Rated C : Corrected A/W : Acceptable but Monitor & Maintain		+ Issue Type Ma : Maintenance Deficiency Ob : Design & System Obsolescence En : Enforcement	
--	--	---	--	---	--

**Flood Control Project Maintenance
Levee Inspections****Maintenance Issue Types Only, Levee Inspection Report By Mile - Spring 2024****Brannan Andrus Levee Maintenance District**

Waterway	Bank	Unit Miles	Inspection Start/End	Inspector
Unit No. 02 Sacramento River	Left	11.54	04/17/2024 04/17/2024	Gregg McMillon

LM Start	7.94	Rating **	U	Issue No.	65
LM End	7.94	Issue Type +	Ma	Location *	LS
Category	Earthen Levee			GPS Latitude/Longitude	
				Start	End
Item	Trim / Thin Trees			38.155373°	38.155373°
				-121.680090°	-121.680090°
DWR ID	DWR_NA0002_02_s_2022_65				
Comment Code					
T3 : Fallen tree with root ball.					
Inspector Comment					

Photo 1 of 1 : SP_2024_NA0002_63_65_20240301_00022.jpg



View of large downed tree on the landside slope (Spring 2022).

LM Start	7.99	Rating **	M	Issue No.	74
LM End	7.99	Issue Type +	Ma	Location *	CR
Category	Earthen Levee			GPS Latitude/Longitude	
				Start	End
Item	Trim / Thin Trees			38.154729°	38.154729°
				-121.680439°	-121.680439°
DWR ID	DWR_NA0002_02_s_2024_74				
Comment Code					
T2 : Tree or limb.					
Inspector Comment					
Remove tree limbs from the crown LS shoulder.					

Photo 1 of 1 : SP_2024_NA0002_63_74_20240422_00157.jpg



View of fallen tree limbs on the crown LS shoulder. (Spring 2024)

LM Start	8.04	Rating **	M	Issue No.	75
LM End	8.15	Issue Type +	Ma	Location *	LS
Category	Earthen Levee			GPS Latitude/Longitude	
				Start	End
Item	Vegetation			38.153961°	38.152519°
				-121.680901°	-121.681656°
DWR ID	DWR_NA0002_02_s_2024_75				
Comment Code					
V1 : Control annual grass and weeds on the levee slopes and easements.					
Inspector Comment					

No Photos

* Location LS : Land Side N/A : Not Applicable WS : Water Side CR : Crown	** Rating A : Acceptable M : Minimally Acceptable U : Unacceptable	N : Not Inspected/Rated C : Corrected A/W : Acceptable but Monitor & Maintain	+ Issue Type Ma : Maintenance Deficiency Ob : Design & System Obsolescence En : Enforcement
--	--	--	---

**Flood Control Project Maintenance
Levee Inspections**

Maintenance Issue Types Only, Levee Inspection Report By Mile - Spring 2024

Brannan Andrus Levee Maintenance District

Waterway	Bank	Unit Miles	Inspection Start/End	Inspector
Unit No. 02 Sacramento River	Left	11.54	04/17/2024 04/17/2024	Gregg McMillon

LM Start	8.08	Rating **	M	Issue No.	73
LM End	8.08	Issue Type +	Ma	Location *	CR
Category	Earthen Levee			GPS Latitude/Longitude	
				Start	End
Item	Trim / Thin Trees			38.153522°	38.153522°
				-121.681125°	-121.681125°
DWR ID	DWR_NA0002_02_s_2024_73				
Comment Code					
T4 : Trim trees over roadway to at least 12 feet above ground level.					
Inspector Comment					

No Photos

LM Start	8.17	Rating **	M	Issue No.	92
LM End	8.17	Issue Type +	Ma	Location *	WS
Category	Earthen Levee			GPS Latitude/Longitude	
				Start	End
Item	Vegetation			38.152255°	38.152255°
				-121.681607°	-121.681607°
DWR ID	DWR_NA0002_02_f_2019_92				
Comment Code					
V2 : Remove the wild growth and woody vegetation other than native grasses from the levee slopes.					
Inspector Comment					
Remove arundo on the waterside slope.					

Photo 1 of 1 : SP_2024_NA0002_63_92_20240301_00045.jpg



View of arundo on the waterside slope (Spring 2021).

* Location LS : Land Side N/A : Not Applicable WS : Water Side CR : Crown		** Rating A : Acceptable M : Minimally Acceptable U : Unacceptable		N : Not Inspected/Rated C : Corrected A/W : Acceptable but Monitor & Maintain		+ Issue Type Ma : Maintenance Deficiency Ob : Design & System Obsolescence En : Enforcement	
---	--	---	--	---	--	--	--

**Flood Control Project Maintenance
Levee Inspections****Maintenance Issue Types Only, Levee Inspection Report By Mile - Spring 2024****Brannan Andrus Levee Maintenance District**

Waterway	Bank	Unit Miles	Inspection Start/End	Inspector
Unit No. 02 Sacramento River	Left	11.54	04/17/2024 04/17/2024	Gregg McMillon

LM Start	8.20	Rating **	U	Issue No.	69
LM End	8.42	Issue Type +	Ma	Location *	WS
Category	Supplemental			GPS Latitude/Longitude	
				Start	End
Item	2018 USACE Erosion Survey			38.151867°	38.148711°
				-121.682201°	-121.682790°
DWR ID	DWR_NA0002_02_s_2022_69				

Comment Code**Inspector Comment**

Noticed scour at LM 8.37 and a tree with exposed roots. 2018 Site ID: SAC 12.1 L
Status: Critical
2018 Field Notes: No observed change.
Site History: 2010 - Small inlet area behind a man-built spit. Bank is slumping and could possibly be fixed with maintenance. 2011 - Site continues to worsen. 2015 - Upgraded to CRITICAL. 2016 - Site continues to get worse. 2017 - Continues to worsen and threaten the road.

LM Start	8.20	Rating **	U	Issue No.	69 (cont)
LM End	8.42	Issue Type +	Ma	Location *	WS

Photo 1 of 3 : SP_2024_NA0002_63_69_20240301_00029.jpg



View of the scour at LM 8.37 (Spring 2023).

Photo 2 of 3 : SP_2024_NA0002_63_69_20240301_00030.jpg



USACE 2018 Erosion Photo #1

* Location	** Rating	+ Issue Type
LS : Land Side WS : Water Side CR : Crown	A : Acceptable M : Minimally Acceptable U : Unacceptable	Ma : Maintenance Deficiency Ob : Design & System Obsolescence En : Enforcement
N/A : Not Applicable	N : Not Inspected/Rated C : Corrected A/W : Acceptable but Monitor & Maintain	

**Flood Control Project Maintenance
Levee Inspections****Maintenance Issue Types Only, Levee Inspection Report By Mile - Spring 2024****Brannan Andrus Levee Maintenance District**

Waterway	Bank	Unit Miles	Inspection Start/End	Inspector
Unit No. 02 Sacramento River	Left	11.54	04/17/2024 04/17/2024	Gregg McMillon

LM Start	8.20	Rating **	U	Issue No.	69 (cont)
LM End	8.42	Issue Type +	Ma	Location *	WS
Category	Supplemental			GPS Latitude/Longitude	
				Start	End
Item	2018 USACE Erosion Survey			38.151867°	38.148711°
				-121.682201°	-121.682790°
DWR ID	DWR_NA0002_02_s_2022_69				

Photo 3 of 3 : SP_2024_NA0002_63_69_20240301_00031.jpg



USACE 2018 Erosion Photo #2

LM Start	8.21	Rating **	M	Issue No.	63
LM End	8.21	Issue Type +	Ma	Location *	WS
Category	Earthen Levee			GPS Latitude/Longitude	
				Start	End
Item	Trim / Thin Trees			38.151680°	38.151680°
				-121.681896°	-121.681896°
DWR ID	DWR_NA0002_02_s_2024_63				
Comment Code					
T3 : Fallen tree with root ball.					
Inspector Comment					
Remove fallen tree from crown.					

Photo 1 of 1 : SP_2024_NA0002_63_63_20240422_00159.jpg



View of fallen tree to be removed. (Spring 2024)

LM Start	8.32	Rating **	U	Issue No.	158
LM End	8.35	Issue Type +	Ma	Location *	LS
Category	Earthen Levee			GPS Latitude/Longitude	
				Start	End
Item	Trim / Thin Trees			38.150168°	38.149698°
				-121.682159°	-121.682255°
DWR ID	DWR_NA0002_02_f_2018_158				
Comment Code					
T3 : Fallen tree with root ball.					
Inspector Comment					
Remove the downed trees from landside slope.					

Photo 1 of 1 : SP_2024_NA0002_63_158_20240301_00064.jpg



View of downed trees on the landside slope. Fall 2023.

* Location	** Rating	+ Issue Type
LS : Land Side WS : Water Side CR : Crown	A : Acceptable M : Minimally Acceptable U : Unacceptable	Ma : Maintenance Deficiency Ob : Design & System Obsolescence En : Enforcement
N/A : Not Applicable	N : Not Inspected/Rated C : Corrected A/W : Acceptable but Monitor & Maintain	

**Flood Control Project Maintenance
Levee Inspections**

Maintenance Issue Types Only, Levee Inspection Report By Mile - Spring 2024

Brannan Andrus Levee Maintenance District

Waterway	Bank	Unit Miles	Inspection Start/End	Inspector
Unit No. 02 Sacramento River	Left	11.54	04/17/2024 04/17/2024	Gregg McMillon

LM Start	8.32	Rating **	M	Issue No.	105
LM End	8.57	Issue Type +	Ma	Location *	LS
Category	Earthen Levee			GPS Latitude/Longitude	
				Start	End
Item	Trim / Thin Trees			38.150168°	38.146481°
				-121.682160°	-121.682827°
DWR ID	DWR_NA0002_02_f_2021_105				
Comment Code					
T1 : Trim and thin trees to at least five feet above ground level to allow visibility of the ground and room to flood fight.					
Inspector Comment					

No Photos

LM Start	8.40	Rating **	U	Issue No.	157
LM End	8.40	Issue Type +	Ma	Location *	LS
Category	Earthen Levee			GPS Latitude/Longitude	
				Start	End
Item	Trim / Thin Trees			38.148959°	38.148959°
				-121.682385°	-121.682385°
DWR ID	DWR_NA0002_02_f_2019_157				
Comment Code					
T3 : Fallen tree with root ball.					
Inspector Comment					
Remove the downed tree from the landside slope.					

Photo 1 of 1 : SP_2024_NA0002_63_157_20240301_00063.jpg



View of downed tree on the landside slope (Spring 2022).

LM Start	8.44	Rating **	C	Issue No.	106
LM End	8.44	Issue Type +	Ma	Location *	LS
Category	Earthen Levee			GPS Latitude/Longitude	
				Start	End
Item	Trim / Thin Trees			38.148444°	38.148444°
				-121.682445°	-121.682445°
DWR ID	DWR_NA0002_02_f_2021_106				
Comment Code					
T2 : Tree or limb.					
Inspector Comment					

No Photos

* Location LS : Land Side N/A : Not Applicable WS : Water Side CR : Crown	** Rating A : Acceptable M : Minimally Acceptable U : Unacceptable	N : Not Inspected/Rated C : Corrected A/W : Acceptable but Monitor & Maintain	+ Issue Type Ma : Maintenance Deficiency Ob : Design & System Obsolescence En : Enforcement
--	--	---	---

**Flood Control Project Maintenance
Levee Inspections****Maintenance Issue Types Only, Levee Inspection Report By Mile - Spring 2024****Brannan Andrus Levee Maintenance District**

Waterway	Bank	Unit Miles	Inspection Start/End	Inspector
Unit No. 02 Sacramento River	Left	11.54	04/17/2024 04/17/2024	Gregg McMillon

LM Start	8.44	Rating **	M	Issue No.	77
LM End	8.44	Issue Type +	Ma	Location *	WS
Category	Earthen Levee			GPS Latitude/Longitude	
				Start	End
Item	Trim / Thin Trees			38.148405°	38.148405°
				-121.682580°	-121.682580°
DWR ID	DWR_NA0002_02_s_2022_77				
Comment Code					
T3 : Fallen tree with root ball.					
Inspector Comment					

Photo 1 of 1 : SP_2024_NA0002_63_77_20240301_00035.jpg



View of downed trees needing removal on the waterside slope (Spring 2022).

LM Start	8.66	Rating **	C	Issue No.	110
LM End	8.66	Issue Type +	Ma	Location *	LS
Category	Earthen Levee			GPS Latitude/Longitude	
				Start	End
Item	Trim / Thin Trees			38.145235°	38.145235°
				-121.683133°	-121.683133°
DWR ID	DWR_NA0002_02_f_2019_110				
Comment Code					
T2 : Tree or limb.					
Inspector Comment					

No Photos

LM Start	8.78	Rating **	M	Issue No.	112
LM End	8.87	Issue Type +	Ma	Location *	WS
Category	Earthen Levee			GPS Latitude/Longitude	
				Start	End
Item	Trim / Thin Trees			38.143616°	38.142375°
				-121.683677°	-121.684195°
DWR ID	DWR_NA0002_02_s_2020_112				
Comment Code					
T1 : Trim and thin trees to at least five feet above ground level to allow visibility of the ground and room to flood fight.					
Inspector Comment					

No Photos

* Location LS : Land Side N/A : Not Applicable WS : Water Side CR : Crown		** Rating A : Acceptable M : Minimally Acceptable U : Unacceptable N : Not Inspected/Rated C : Corrected A/W : Acceptable but Monitor & Maintain		+ Issue Type Ma : Maintenance Deficiency Ob : Design & System Obsolescence En : Enforcement	
--	--	---	--	---	--

**Flood Control Project Maintenance
Levee Inspections**

Maintenance Issue Types Only, Levee Inspection Report By Mile - Spring 2024

Brannan Andrus Levee Maintenance District

Waterway	Bank	Unit Miles	Inspection Start/End	Inspector
Unit No. 02 Sacramento River	Left	11.54	04/17/2024 04/17/2024	Gregg McMillon

LM Start	8.96	Rating **	U	Issue No.	68
LM End	9.31	Issue Type +	Ma	Location *	WS
Category	Supplemental			GPS Latitude/Longitude	
				Start	End
Item	2018 USACE Erosion Survey			38.141399°	38.136227°
				-121.685346°	-121.687361°
DWR ID	DWR_NA0002_02_s _ 2022_68				
Comment Code					
Inspector Comment					
<p>Spring 2023: Noticed new, 20-ft long sloughing at LM 8.97. Two previously noticed locations of erosion/undermining both at LM 9.10 seem to not have worsened much since last fall. 2018 Site ID: SAC 11.2 L</p> <p>Status: Critical</p> <p>2018 Field Notes: Erosion is now into levee crown</p> <p>Site History: 2008 - Erosion causing vertical bank at the highway on top of levee. The whole bank along the highway should be repaired. 2009 - Minimal new erosion. 2011 - Bank continues to slowly erode. 2012 - Upgrade to CRITICAL, new erosion since lat year and steeper slopes in sections. 2015 - Road foundation and cables exposed. Extremely large tree with exposed roots looks likely to fail and take out a significant portion of the levee. 2016 - Site continues to erode. 2017 - New slump section. Erosion under the road has enlarged.</p>					

LM Start	8.96	Rating **	U	Issue No.	68 (cont)
LM End	9.31	Issue Type +	Ma	Location *	WS

Photo 1 of 4 : SP_2024_NA0002_63_68_20240301_00025.jpg



View of the sloughing at LM 8.97 (Spring 2023).

Photo 2 of 4 : SP_2024_NA0002_63_68_20240301_00026.jpg



Erosion at LM 9.10 by turnout (Spring 2023).

* Location LS: Land Side N/A: Not Applicable WS: Water Side CR: Crown	** Rating A: Acceptable M: Minimally Acceptable U: Unacceptable	N: Not Inspected/Rated C: Corrected A/W: Acceptable but Monitor & Maintain	+ Issue Type Ma: Maintenance Deficiency Ob: Design & System Obsolescence En: Enforcement
--	---	--	--

**Flood Control Project Maintenance
Levee Inspections**

Maintenance Issue Types Only, Levee Inspection Report By Mile - Spring 2024

Brannan Andrus Levee Maintenance District

Waterway	Bank	Unit Miles	Inspection Start/End	Inspector
Unit No. 02 Sacramento River	Left	11.54	04/17/2024 04/17/2024	Gregg McMillon

LM Start	8.96	Rating **	U	Issue No.	68 (cont)
LM End	9.31	Issue Type +	Ma	Location *	WS
Category	Supplemental			GPS Latitude/Longitude	
				Start	End
Item	2018 USACE Erosion Survey			38.141399°	38.136227°
				-121.685346°	-121.687361°
DWR ID	DWR_NA0002_02_s_2022_68				

Photo 3 of 4 : SP_2024_NA0002_63_68_20240301_00027.jpg



USACE 2018 Erosion Photo #1

LM Start	8.96	Rating **	U	Issue No.	68 (cont)
LM End	9.31	Issue Type +	Ma	Location *	WS

Photo 4 of 4 : SP_2024_NA0002_63_68_20240301_00028.jpg



USACE 2018 Erosion Photo #2

LM Start	9.21	Rating **	U	Issue No.	85
LM End	9.21	Issue Type +	Ma	Location *	LS
Category	Earthen Levee			GPS Latitude/Longitude	
				Start	End
Item	Trim / Thin Trees			38.137720°	38.137720°
				-121.686205°	-121.686205°
DWR ID	DWR_NA0002_02_s_2022_85				
Comment Code					
T1 : Trim and thin trees to at least five feet above ground level to allow visibility of the ground and room to flood fight.					
Inspector Comment					

Photo 1 of 1 : SP_2024_NA0002_63_85_20240301_00041.jpg



View of thick trees on the landside slope (Spring 2022).

* Location LS : Land Side N/A : Not Applicable WS : Water Side CR : Crown		** Rating A : Acceptable M : Minimally Acceptable U : Unacceptable N : Not Inspected/Rated C : Corrected A/W : Acceptable but Monitor & Maintain		+ Issue Type Ma : Maintenance Deficiency Ob : Design & System Obsolescence En : Enforcement	
--	--	---	--	---	--

**Flood Control Project Maintenance
Levee Inspections**

Maintenance Issue Types Only, Levee Inspection Report By Mile - Spring 2024

Brannan Andrus Levee Maintenance District

Waterway	Bank	Unit Miles	Inspection Start/End	Inspector
Unit No. 02 Sacramento River	Left	11.54	04/17/2024 04/17/2024	Gregg McMillon

LM Start	9.36	Rating **	M	Issue No.	67
LM End	9.61	Issue Type +	Ma	Location *	LS
Category	Earthen Levee			GPS Latitude/Longitude	
				Start	End
Item	Animal Control			38.135593°	38.131921°
				-121.686057°	-121.686240°
DWR ID	DWR_NA0002_02_s_2019_67				
Comment Code					
A1 : Exterminate rodents and backfill and compact or grout burrows.					
Inspector Comment					
Animal holes have been backfilled but there are new holes visible along the LS slope and toe.					

Photo 1 of 1 : SP_2024_NA0002_63_67_20240301_00024.jpg



View of rodent holes on the upper LS slope (Spring 2023).

LM Start	9.37	Rating **	M	Issue No.	197
LM End	9.37	Issue Type +	Ma	Location *	
Category	Supplemental			GPS Latitude/Longitude	
				Start	End
Item	DWR UCIP LMA Responsibility			38.135348°	38.135348°
				-121.686086°	-121.686086°
DWR ID	21932				
Comment Code					
Inspector Comment					
DS_ID:21932 FS_ID:75626 EP_NO: N/A Repair Type: Non-Urgent EVAL Issue: Crossing Status: Not Found UCIP Comments: 05/10/2022 Record updated from No Action Needed to Non-Urgent. Crossing not found. Geophysical results did not confirm presence of pipe through levee. Record will remain in UCIP's inspection records until future Levee Improvement Project can confirm no crossing was found through the levee. No permit has been identified authorizing pipe. (O.Yakimov - DWR UCIP)					
FIELD_STRUCT_DESC: 12-inch drainage pipe of an unknown material through the levee, 4 feet below the crown. Open on both ends. [Additional Reference(s): DWR Levee Log, 2005 (HLM 9.39). USACE Sacramento O&M Manual, Unit 102, April 1959, Revised 29 December 2016, (RM 10.9), listed as abandoned 12-inch pipe]. FS Date: 5/10/2022 2:26:15 PM					

Photo 1 of 3 : UCIP_SP_2024_75626_113358.jpg



Top of Levee: View of levee crown looking from waterside

* Location LS : Land Side N/A : Not Applicable WS : Water Side CR : Crown	** Rating A : Acceptable M : Minimally Acceptable U : Unacceptable	N : Not Inspected/Rated C : Corrected A/W : Acceptable but Monitor & Maintain	+ Issue Type Ma : Maintenance Deficiency Ob : Design & System Obsolescence En : Enforcement
--	--	--	---

**Flood Control Project Maintenance
Levee Inspections****Maintenance Issue Types Only, Levee Inspection Report By Mile - Spring 2024****Brannan Andrus Levee Maintenance District**

Waterway	Bank	Unit Miles	Inspection Start/End	Inspector
Unit No. 02 Sacramento River	Left	11.54	04/17/2024 04/17/2024	Gregg McMillon

LM Start	9.37	Rating **	M	Issue No.	197 (cont)
LM End	9.37	Issue Type +	Ma	Location *	
Category	Supplemental			GPS Latitude/Longitude	
				Start	End
Item	DWR UCIP LMA Responsibility			38.135348°	38.135348°
				-121.686086°	-121.686086°
DWR ID	21932				

Photo 2 of 3 : UCIP_SP_2024_75626_113357.jpg



Water-Side: View of levee slope looking from crown

LM Start	9.37	Rating **	M	Issue No.	197 (cont)
LM End	9.37	Issue Type +	Ma	Location *	

Photo 3 of 3 : UCIP_SP_2024_75626_113359.jpg



Land-Side: View of levee slope looking from crown

LM Start	9.40	Rating **	M	Issue No.	76
LM End	9.62	Issue Type +	Ma	Location *	LS
Category	Earthen Levee			GPS Latitude/Longitude	
				Start	End
Item	Vegetation			38.134994°	38.131790°
				-121.686036°	-121.686271°
DWR ID	DWR_NA0002_02_s_2024_76				
Comment Code					
V1 : Control annual grass and weeds on the levee slopes and easements.					
Inspector Comment					

No Photos

* Location	** Rating	+ Issue Type
LS : Land Side WS : Water Side CR : Crown	A : Acceptable M : Minimally Acceptable U : Unacceptable	Ma : Maintenance Deficiency Ob : Design & System Obsolescence En : Enforcement
N/A : Not Applicable	N : Not Inspected/Rated C : Corrected A/W : Acceptable but Monitor & Maintain	

**Flood Control Project Maintenance
Levee Inspections****Maintenance Issue Types Only, Levee Inspection Report By Mile - Spring 2024****Brannan Andrus Levee Maintenance District**

Waterway	Bank	Unit Miles	Inspection Start/End	Inspector
Unit No. 02 Sacramento River	Left	11.54	04/17/2024 04/17/2024	Gregg McMillon

LM Start	9.78	Rating **	M	Issue No.	51
LM End	9.93	Issue Type +	Ma	Location *	WS
Category	Supplemental			GPS Latitude/Longitude	
				Start	End
Item	2018 USACE Erosion Survey			38.129722°	38.127672°
				-121.687468°	-121.688646°
DWR ID	DWR_NA0002_02_s _ 2022_51				
Comment Code					
Inspector Comment					
2018 Site ID: SAC 10.8 L					
Status: Critical					
2018 Field Notes: Site extended upstream and upgraded to CRITICAL.					
New erosion vertical from levee crown down.					
Site History: 2004 - Wave wash pockets approximately 100 ft long with new full bank rock between the pockets. 2005 - Spot repairs, but toe is still eroding in several places. 2006 - Low vertical bank along roadway.					
2007 - A PL 84-99 repair was constructed, it cover the majority of the site with the exception of the upstream 150 to 200 ft and the downstream 250 ft, therefore it is being kept in the inventory. 2009 - Minimal new erosion. 2010 - Outboard berm looks good, but the banks are still very steep. 2011 - While the outboard berm is protecting against wave wash, bank still has slumping issues. 2017 - Lots of new woody debris recruitment.					

LM Start	9.78	Rating **	M	Issue No.	51 (cont)
LM End	9.93	Issue Type +	Ma	Location *	WS

Photo 1 of 2 : SP_2024_NA0002_63_51_20240301_00016.jpg



USACE 2018 Erosion Photo #1

Photo 2 of 2 : SP_2024_NA0002_63_51_20240301_00017.jpg



USACE 2018 Erosion Photo #2

* Location	** Rating	+ Issue Type
LS : Land Side WS : Water Side CR : Crown	A : Acceptable M : Minimally Acceptable U : Unacceptable	Ma : Maintenance Deficiency Ob : Design & System Obsolescence En : Enforcement
N/A : Not Applicable	N : Not Inspected/Rated C : Corrected A/W : Acceptable but Monitor & Maintain	

**Flood Control Project Maintenance
Levee Inspections**

Maintenance Issue Types Only, Levee Inspection Report By Mile - Spring 2024

Brannan Andrus Levee Maintenance District

Waterway	Bank	Unit Miles	Inspection Start/End	Inspector
Unit No. 02 Sacramento River	Left	11.54	04/17/2024 04/17/2024	Gregg McMillon

LM Start	10.54	Rating **	U	Issue No.	89
LM End	10.95	Issue Type +	Ma	Location *	WS
Category	Earthen Levee			GPS Latitude/Longitude	
				Start	End
Item	Vegetation			38.119445°	38.114375°
				-121.692811°	-121.696559°
DWR ID	DWR_NA0002_02_f_2021_89				
Comment Code					
V2 : Remove the wild growth and woody vegetation other than native grasses from the levee slopes.					
Inspector Comment					
Trim back arundo.					

Photo 1 of 1 : SP_2024_NA0002_63_89_20240301_00043.jpg



View looking downstream at arundo on the waterside slope (Fall 2021).

* Location LS : Land Side N/A : Not Applicable WS : Water Side CR : Crown	** Rating A : Acceptable M : Minimally Acceptable U : Unacceptable	N : Not Inspected/Rated C : Corrected A/W : Acceptable but Monitor & Maintain	+ Issue Type Ma : Maintenance Deficiency Ob : Design & System Obsolescence En : Enforcement
--	--	---	---