

**Flood Control Project Maintenance  
Levee Inspections**

**Maintenance Issue Types Only, Levee Inspection Report By Mile - Spring 2021**

**Brannan Andrus Levee Maintenance District**

Waterway	Bank	Unit Miles	Inspection Start/End	Inspector
Unit No. 01 Georgiana Slough	Right	6.01	03/17/2021 03/17/2021	David Julian

LM Start		Rating **	A	Issue No.	<b>27</b>
LM End		Issue Type +	Ma	Location *	N/A
Category	Earthen Levee		GPS Latitude/Longitude		
			Start	End	
Item	Flood Preparedness & Training			°	°
				°	°
DWR ID	DWR_NA0002_01_s_2012_27				
Comment Code					
Inspector Comment					
LMA is prepared to respond to a flood emergency.					

No Photos

LM Start		Rating **	A	Issue No.	<b>32</b>
LM End		Issue Type +	Ma	Location *	N/A
Category	Earthen Levee		GPS Latitude/Longitude		
			Start	End	
Item	Operations & Maintenance Manuals			°	°
				°	°
DWR ID	DWR_NA0002_01_s_2013_32				
Comment Code					
Inspector Comment					
The LMA maintains a copy of the O&M manual on file at district office.					

No Photos

LM Start		Rating **	A	Issue No.	<b>33</b>
LM End		Issue Type +	Ma	Location *	N/A
Category	Earthen Levee		GPS Latitude/Longitude		
			Start	End	
Item	Emergency Supplies & Equipment			°	°
				°	°
DWR ID	DWR_NA0002_01_s_2013_33				
Comment Code					
Inspector Comment					
LMA maintains an adequate amount of flood fight supplies and equipment for flood response.					

No Photos

<b>* Location</b> LS : Land Side    N/A : Not Applicable WS : Water Side CR : Crown	<b>** Rating</b> A : Acceptable M : Minimally Acceptable U : Unacceptable	N : Not Inspected/Rated C : Corrected A/W : Acceptable but Monitor & Maintain	<b>+ Issue Type</b> Ma : Maintenance Deficiency Ob : Design & System Obsolescence En : Enforcement
--	--	---	---

**Flood Control Project Maintenance  
Levee Inspections**

## Maintenance Issue Types Only, Levee Inspection Report By Mile - Spring 2021

### Brannan Andrus Levee Maintenance District

Waterway	Bank	Unit Miles	Inspection Start/End	Inspector
Unit No. 01 Georgiana Slough	Right	6.01	03/17/2021 03/17/2021	David Julian

LM Start	0.02	Rating **	M	Issue No.	122
LM End	1.21	Issue Type +	Ma	Location *	LS
Category	Earthen Levee			GPS Latitude/Longitude	
				Start	End
Item	Vegetation			38.186313 °	38.177824 °
				-121.563003 °	-121.580134 °
DWR ID	DWR_NA0002_01_s_2021_122				
Comment Code					
V1 : Control annual grass and weeds on the levee slopes and easements.					
Inspector Comment					

No Photos

LM Start	1.53	Rating **	M	Issue No.	39
LM End	1.54	Issue Type +	Ma	Location *	WS
Category	Supplemental			GPS Latitude/Longitude	
				Start	End
Item	2017 USACE Erosion Survey			38.173410 °	38.173178 °
				-121.580683 °	-121.580622 °
DWR ID	DWR_NA0002_01_f_2018_39				
Comment Code					
Inspector Comment					
2017 Site ID: GEO 5.5 R					
Status: Eroding New					
2017 Field Notes: Failed rock section, slump failure of bank to subvertical face.					
Site History:					

Photo 1 of 1 : SP\_2021\_NA0002\_62\_39\_20210226\_00014.jpg



Erosion slump in area of previous repair. LM 1.52

LM Start	1.56	Rating **	U	Issue No.	25	
LM End	1.56	Issue Type +	Ma	Location *	LS	
Category	Earthen Levee			GPS Latitude/Longitude		
				Start		End
Item	Trim / Thin Trees			38.172869 °		38.172869 °
				-121.580681 °		-121.580681 °
DWR ID	DWR_NA0002_01_s_2012_25					
Comment Code						
T1 : Trim trees to at least five feet above ground level.						
Inspector Comment						
Tree blocking landside toe.						

Photo 1 of 1 : SP\_2021\_NA0002\_62\_25\_20210226\_00010.jpg



View of thick tree on the landside slope (Fall 2020).

**\* Location**

LS : Land Side    N/A : Not Applicable  
WS : Water Side  
CR : Crown

**\*\* Rating**

A : Acceptable                      N : Not Inspected/Rated  
M : Minimally Acceptable        C : Corrected  
U : Unacceptable                  A/W : Acceptable but Monitor & Maintain

**+ Issue Type**

Ma : Maintenance Deficiency  
Ob : Design & System Obsolescence  
En : Enforcement

**Flood Control Project Maintenance  
Levee Inspections**

**Maintenance Issue Types Only, Levee Inspection Report By Mile - Spring 2021**

**Brannan Andrus Levee Maintenance District**

Waterway	Bank	Unit Miles	Inspection Start/End	Inspector
Unit No. 01 Georgiana Slough	Right	6.01	03/17/2021 03/17/2021	David Julian

LM Start	<b>2.01</b>	Rating **	M	Issue No.	<b>123</b>
LM End	<b>2.01</b>	Issue Type +	Ma	Location *	LS
Category	Earthen Levee		GPS Latitude/Longitude		
			Start	End	
Item	Vegetation		38.166858 °	38.166858 °	
			-121.583268 °	-121.583268 °	
DWR ID	DWR_NA0002_01_s_2021_123				
Comment Code					
V2 : Remove the wild growth other than native grasses from the levee slopes.					
Inspector Comment					
Blackberries at the landside toe.					

No Photos

LM Start	<b>2.02</b>	Rating **	M	Issue No.	<b>124</b>
LM End	<b>2.25</b>	Issue Type +	Ma	Location *	LS
Category	Earthen Levee		GPS Latitude/Longitude		
			Start	End	
Item	Vegetation		38.166671 °	38.163478 °	
			-121.583332 °	-121.584393 °	
DWR ID	DWR_NA0002_01_s_2021_124				
Comment Code					
V1 : Control annual grass and weeds on the levee slopes and easements.					
Inspector Comment					

No Photos

LM Start	<b>2.08</b>	Rating **	M	Issue No.	<b>125</b>
LM End	<b>2.25</b>	Issue Type +	Ma	Location *	WS
Category	Earthen Levee		GPS Latitude/Longitude		
			Start	End	
Item	Vegetation		38.165796 °	38.163496 °	
			-121.583564 °	-121.584381 °	
DWR ID	DWR_NA0002_01_s_2021_125				
Comment Code					
V1 : Control annual grass and weeds on the levee slopes and easements.					
Inspector Comment					
Vegetation encroaching on to crown.					

No Photos

<b>* Location</b> LS : Land Side    N/A : Not Applicable WS : Water Side CR : Crown	<b>** Rating</b> A : Acceptable M : Minimally Acceptable U : Unacceptable	N : Not Inspected/Rated C : Corrected A/W : Acceptable but Monitor & Maintain	<b>+ Issue Type</b> Ma : Maintenance Deficiency Ob : Design & System Obsolescence En : Enforcement
--	--	---	---

**Flood Control Project Maintenance  
Levee Inspections**

**Maintenance Issue Types Only, Levee Inspection Report By Mile - Spring 2021**

**Brannan Andrus Levee Maintenance District**

Waterway	Bank	Unit Miles	Inspection Start/End	Inspector
Unit No. 01 Georgiana Slough	Right	6.01	03/17/2021 03/17/2021	David Julian

LM Start	2.34	Rating **	M	Issue No.	72
LM End	2.34	Issue Type +	Ma	Location *	LS
Category	Earthen Levee			GPS Latitude/Longitude	
				Start	End
Item	Trim / Thin Trees			38.162242 °	38.162242 °
				-121.585058 °	-121.585058 °
DWR ID	DWR_NA0002_01_f_2016_72				
Comment Code					
T1 : Trim trees to at least five feet above ground level.					
Inspector Comment					

No Photos

LM Start	2.36	Rating **	M	Issue No.	7
LM End	2.36	Issue Type +	Ma	Location *	LS
Category	Earthen Levee			GPS Latitude/Longitude	
				Start	End
Item	Animal Control			38.162004 °	38.162004 °
				-121.585229 °	-121.585229 °
DWR ID	DWR_NA0002_01_s_2012_7				
Comment Code					
A3 : No rodents visible, but rodent burrows visible; need to backfill and compact or grout burrows.					
Inspector Comment					
Rodent colony exists under raised Tyler Island Bridge approach. Rodents should be exterminated and their holes backfilled.					

No Photos

LM Start	2.41	Rating **	U	Issue No.	28
LM End	2.49	Issue Type +	Ma	Location *	LS
Category	Earthen Levee			GPS Latitude/Longitude	
				Start	End
Item	Vegetation			38.161301 °	38.160281 °
				-121.585560 °	-121.586007 °
DWR ID	DWR_NA0002_01_s_2013_28				
Comment Code					
V2 : Remove the wild growth other than native grasses from the levee slopes.					
Inspector Comment					
Dense vegetation and wild roses on landside slope and toe.					

Photo 1 of 1 : SP\_2021\_NA0002\_62\_28\_20210226\_00011.jpg



View looking downstream at thick vegetation on the landside slope (Fall 2019).

**\* Location**  
LS : Land Side    N/A : Not Applicable  
WS : Water Side  
CR : Crown

**\*\* Rating**  
A : Acceptable                      N : Not Inspected/Rated  
M : Minimally Acceptable        C : Corrected  
U : Unacceptable                  A/W : Acceptable but Monitor & Maintain

**+ Issue Type**  
Ma : Maintenance Deficiency  
Ob : Design & System Obsolescence  
En : Enforcement

**Flood Control Project Maintenance  
Levee Inspections**

**Maintenance Issue Types Only, Levee Inspection Report By Mile - Spring 2021**

**Brannan Andrus Levee Maintenance District**

Waterway	Bank	Unit Miles	Inspection Start/End	Inspector
Unit No. 01 Georgiana Slough	Right	6.01	03/17/2021 03/17/2021	David Julian

LM Start	<b>2.49</b>	Rating **	M	Issue No.	<b>6</b>
LM End	<b>3.01</b>	Issue Type +	Ma	Location *	LS
Category	Earthen Levee		GPS Latitude/Longitude		
			Start	End	
Item	Vegetation		38.160213 °	38.156368 °	
			-121.586047 °	-121.592552 °	
DWR ID	DWR_NA0002_01_s_2021_6				
Comment Code					
V1 : Control annual grass and weeds on the levee slopes and easements.					
Inspector Comment					

No Photos

LM Start	<b>2.58</b>	Rating **	M	Issue No.	<b>52</b>
LM End	<b>2.58</b>	Issue Type +	Ma	Location *	LS
Category	Earthen Levee		GPS Latitude/Longitude		
			Start	End	
Item	Trim / Thin Trees		38.158999 °	38.158999 °	
			-121.586621 °	-121.586621 °	
DWR ID	DWR_NA0002_01_f_2017_29				
Comment Code					
T1 : Trim trees to at least five feet above ground level.					
Inspector Comment					

No Photos

LM Start	<b>2.60</b>	Rating **	M	Issue No.	<b>44</b>
LM End	<b>2.60</b>	Issue Type +	Ma	Location *	CR
Category	Earthen Levee		GPS Latitude/Longitude		
			Start	End	
Item	Crown Surface / Depressions / Rutting		38.158684 °	38.158684 °	
			-121.586787 °	-121.586787 °	
DWR ID	DWR_NA0002_01_f_2017_44				
Comment Code					
C3 : Add appropriate gravel or road base. Grade and compact.					
Inspector Comment					
Pothole in crown at pipe crossing					

No Photos

<b>* Location</b> LS : Land Side    N/A : Not Applicable WS : Water Side CR : Crown	<b>** Rating</b> A : Acceptable M : Minimally Acceptable U : Unacceptable	N : Not Inspected/Rated C : Corrected A/W : Acceptable but Monitor & Maintain	<b>+ Issue Type</b> Ma : Maintenance Deficiency Ob : Design & System Obsolescence En : Enforcement
--	--	---	---

**Flood Control Project Maintenance  
Levee Inspections**

**Maintenance Issue Types Only, Levee Inspection Report By Mile - Spring 2021**

**Brannan Andrus Levee Maintenance District**

Waterway	Bank	Unit Miles	Inspection Start/End	Inspector
Unit No. 01 Georgiana Slough	Right	6.01	03/17/2021 03/17/2021	David Julian

LM Start	2.62	Rating **	M	Issue No.	126
LM End	3.01	Issue Type +	Ma	Location *	WS
Category	Earthen Levee			GPS Latitude/Longitude	
				Start	End
Item	Vegetation			38.158492 °	38.156368 °
				-121.586877 °	-121.592552 °
DWR ID	DWR_NA0002_01_s_2021_126				
Comment Code					
V1 : Control annual grass and weeds on the levee slopes and easements.					
Inspector Comment					

No Photos

LM Start	3.00	Rating **	U	Issue No.	53
LM End	3.00	Issue Type +	Ma	Location *	LS
Category	Earthen Levee			GPS Latitude/Longitude	
				Start	End
Item	Trim / Thin Trees			38.156537 °	38.156537 °
				-121.592498 °	-121.592498 °
DWR ID	DWR_NA0002_01_f_2018_53				
Comment Code					
T2 : Thin trees to allow visibility of the ground and room to flood fight.					
Inspector Comment					
Trim willows					

Photo 1 of 1 : SP\_2021\_NA0002\_62\_53\_20210226\_00018.jpg



View looking downstream at willows on the landside slope (Spring 2019).

LM Start	3.18	Rating **	M	Issue No.	2
LM End	3.32	Issue Type +	Ma	Location *	LS
Category	Earthen Levee			GPS Latitude/Longitude	
				Start	End
Item	Vegetation			38.153977 °	38.152151 °
				-121.592589 °	-121.591529 °
DWR ID	DWR_NA0002_01_s_2021_2				
Comment Code					
V1 : Control annual grass and weeds on the levee slopes and easements.					
Inspector Comment					

No Photos

<b>* Location</b> LS : Land Side    N/A : Not Applicable WS : Water Side CR : Crown	<b>** Rating</b> A : Acceptable M : Minimally Acceptable U : Unacceptable	N : Not Inspected/Rated C : Corrected A/W : Acceptable but Monitor & Maintain	<b>+ Issue Type</b> Ma : Maintenance Deficiency Ob : Design & System Obsolescence En : Enforcement
--	--	---	---

**Flood Control Project Maintenance  
Levee Inspections**

## Maintenance Issue Types Only, Levee Inspection Report By Mile - Spring 2021

### Brannan Andrus Levee Maintenance District

Waterway	Bank	Unit Miles	Inspection Start/End	Inspector
Unit No. 01 Georgiana Slough	Right	6.01	03/17/2021 03/17/2021	David Julian

LM Start	3.33	Rating **	U	Issue No.	127
LM End	3.35	Issue Type +	Ma	Location *	LS
Category	Earthen Levee			GPS Latitude/Longitude	
				Start	End
Item	Vegetation			38.151946 °	38.151759 °
				-121.591551 °	-121.591641 °
DWR ID	DWR_NA0002_01_s_2021_127				
Comment Code					
V2 : Remove the wild growth other than native grasses from the levee slopes.					
Inspector Comment					

Photo 1 of 1 : SP\_2021\_NA0002\_62\_127\_20210317\_00237.jpg



View of thick wild roses on the landside slope (Spring 2021).

LM Start	3.38	Rating **	A/W	Issue No.	67
LM End	3.40	Issue Type +	Ma	Location *	CR
Category	Earthen Levee			GPS Latitude/Longitude	
				Start	End
Item	Slope Stability			38.151430 °	38.151390 °
				-121.592085 °	-121.592517 °
DWR ID	DWR_NA0002_01_s_2017_67				
Comment Code					
S1 : Repair slope instability.					
Inspector Comment					
Appears to be beginning of a landside slump. LMA's Engineer (DCC) is monitoring site for movement.					

Photo 1 of 1 : SP\_2021\_NA0002\_62\_67\_20210226\_00029.jpg



Looking east at possible sloughing on landward shoulder.

LM Start	3.43	Rating **	U	Issue No.	59
LM End	3.95	Issue Type +	Ma	Location *	WS
Category	Earthen Levee			GPS Latitude/Longitude	
				Start	End
Item	Vegetation			38.151448 °	38.145753 °
				-121.592898 °	-121.601660 °
DWR ID	DWR_NA0002_01_f_2018_59				
Comment Code					
V2 : Remove the wild growth other than native grasses from the levee slopes.					
Inspector Comment					

Photo 1 of 1 : SP\_2021\_NA0002\_62\_59\_20210226\_00023.jpg



View looking downstream at vegetation on the water side slope (October 2018).

**\* Location**  
LS : Land Side    N/A : Not Applicable  
WS : Water Side  
CR : Crown

**\*\* Rating**  
A : Acceptable                      N : Not Inspected/Rated  
M : Minimally Acceptable        C : Corrected  
U : Unacceptable                  A/W : Acceptable but Monitor & Maintain

**+ Issue Type**  
Ma : Maintenance Deficiency  
Ob : Design & System Obsolescence  
En : Enforcement

**Flood Control Project Maintenance  
Levee Inspections**

**Maintenance Issue Types Only, Levee Inspection Report By Mile - Spring 2021**

**Brannan Andrus Levee Maintenance District**

Waterway	Bank	Unit Miles	Inspection Start/End	Inspector
Unit No. 01 Georgiana Slough	Right	6.01	03/17/2021 03/17/2021	David Julian

LM Start	<b>3.48</b>	Rating **	M	Issue No.	<b>128</b>
LM End	<b>3.91</b>	Issue Type +	Ma	Location *	LS
Category	Earthen Levee		GPS Latitude/Longitude		
			Start	End	
Item	Vegetation		38.151694 °	38.148710 °	
			-121.593942 °	-121.599753 °	
DWR ID	DWR_NA0002_01_s_2021_128				
Comment Code					
V1 : Control annual grass and weeds on the levee slopes and easements.					
Inspector Comment					

No Photos

LM Start	<b>3.74</b>	Rating **	M	Issue No.	<b>46</b>
LM End	<b>3.74</b>	Issue Type +	Ma	Location *	LS
Category	Earthen Levee		GPS Latitude/Longitude		
			Start	End	
Item	Trim / Thin Trees		38.150841 °	38.150841 °	
			-121.598161 °	-121.598161 °	
DWR ID	DWR_NA0002_01_f_2017_46				
Comment Code					
T1 : Trim trees to at least five feet above ground level.					
Inspector Comment					

Photo 1 of 1 : SP\_2021\_NA0002\_62\_46\_20210226\_00015.jpg



View looking downstream at thick tree on the landside slope (Fall 2019).

**\* Location**  
 LS : Land Side    N/A : Not Applicable  
 WS : Water Side  
 CR : Crown

**\*\* Rating**  
 A : Acceptable                      N : Not Inspected/Rated  
 M : Minimally Acceptable        C : Corrected  
 U : Unacceptable                  A/W : Acceptable but Monitor & Maintain

**+ Issue Type**  
 Ma : Maintenance Deficiency  
 Ob : Design & System Obsolescence  
 En : Enforcement

**Flood Control Project Maintenance  
Levee Inspections**

**Maintenance Issue Types Only, Levee Inspection Report By Mile - Spring 2021**

**Brannan Andrus Levee Maintenance District**

Waterway	Bank	Unit Miles	Inspection Start/End	Inspector
Unit No. 01 Georgiana Slough	Right	6.01	03/17/2021 03/17/2021	David Julian

LM Start	<b>3.99</b>	Rating **	M	Issue No.	<b>75</b>
LM End	<b>3.99</b>	Issue Type +	Ma	Location *	
Category	Supplemental		GPS Latitude/Longitude		
			Start	End	
Item	DWR UCIP LMA Responsibility		38.147677 °	38.147677 °	
			-121.600501 °	-121.600501 °	
DWR ID	21772				

**Comment Code**

**Inspector Comment**

FS\_ID:62327  
DS\_ID:21772  
EP\_NO: 11248  
Repair Type: Non-Urgent  
Crossing Status: Found  
UCIP Comments: 06/23/2020 Record updated from No Action Needed to Non-Urgent. 20-inch steel drainage pipe sleeved through 24-inch steel pipe. Annular space between pipes seems to be grouted. Unable to find a permit for modification. Asphalt repair patches on levee crown. No permit has been identified authorizing pipe. Need to have CVFPB review ABO and determine current owner. (O.Yakimov - DWR UCIP)  
FIELD\_STRUCT\_DESC: 20-inch steel drainage pipe sleeved through 24-inch steel pipe through the levee, 3 feet below the crown. Siphon breaker is located on the waterside (WS) slope. Pump is located on the landside (LS). (24-inch pipe [HLM 3.99] authorized under Automatic Board Order (ABO) issued as Permit No. 11248, 1975 - Reclamation District No.407). [Additional Reference(s): DWR Levee Log, 2005 (HLM 3.99), listed as 24-inch pipe. USACE Sacramento O&M Manual, Unit 103, June 1954, Revised 29 December 2016, (Station 'R' 107+76), listed as 26-inch pipe. USACE As-Built Drawing No. 50-04-2631, Sheet 2, Station 107+76, March 1950, listed as 26-inch pipe].  
FS Date: 6/23/2020 9:27:29 AM

LM Start	<b>3.99</b>	Rating **	M	Issue No.	<b>75 (cont)</b>
LM End	<b>3.99</b>	Issue Type +	Ma	Location *	

Photo 1 of 3 : UCIP\_SP\_2021\_62327\_90037.jpg



Top of Levee: View of levee crown looking downstream

Photo 2 of 3 : UCIP\_SP\_2021\_62327\_90036.jpg



Land-Side: View of levee slope looking from crown

* Location	** Rating	+ Issue Type
LS : Land Side WS : Water Side CR : Crown	A : Acceptable M : Minimally Acceptable U : Unacceptable	Ma : Maintenance Deficiency Ob : Design & System Obsolescence En : Enforcement
N/A : Not Applicable	N : Not Inspected/Rated C : Corrected A/W : Acceptable but Monitor & Maintain	

**Flood Control Project Maintenance  
Levee Inspections**

**Maintenance Issue Types Only, Levee Inspection Report By Mile - Spring 2021**

**Brannan Andrus Levee Maintenance District**

Waterway	Bank	Unit Miles	Inspection Start/End	Inspector
Unit No. 01 Georgiana Slough	Right	6.01	03/17/2021 03/17/2021	David Julian

LM Start	3.99	Rating **	M	Issue No.	75 (cont)
LM End	3.99	Issue Type +	Ma	Location *	
Category	Supplemental			GPS Latitude/Longitude	
				Start	End
Item	DWR UCIP LMA Responsibility			38.147677 °	38.147677 °
				-121.600501 °	-121.600501 °
DWR ID	21772				

Photo 3 of 3 : UCIP\_SP\_2021\_62327\_90035.jpg



Land-Side: Pipe sleeving point on levee slope

LM Start	4.11	Rating **	M	Issue No.	4
LM End	4.14	Issue Type +	Ma	Location *	WS
Category	Earthen Levee			GPS Latitude/Longitude	
				Start	End
Item	Vegetation			38.146153 °	38.145668 °
				-121.601541 °	-121.601661 °
DWR ID	DWR_NA0002_01_f_2020_4				
Comment Code					
V2 : Remove the wild growth other than native grasses from the levee slopes.					
Inspector Comment					
Willows on the waterside slope.					

No Photos

LM Start	4.19	Rating **	M	Issue No.	8
LM End	4.24	Issue Type +	Ma	Location *	WS
Category	Earthen Levee			GPS Latitude/Longitude	
				Start	End
Item	Vegetation			38.145004 °	38.144313 °
				-121.601584 °	-121.601300 °
DWR ID	DWR_NA0002_01_s_2021_8				
Comment Code					
V1 : Control annual grass and weeds on the levee slopes and easements.					
Inspector Comment					

No Photos

<b>* Location</b> LS : Land Side    N/A : Not Applicable WS : Water Side CR : Crown	<b>** Rating</b> A : Acceptable M : Minimally Acceptable U : Unacceptable	N : Not Inspected/Rated C : Corrected A/W : Acceptable but Monitor & Maintain	<b>+ Issue Type</b> Ma : Maintenance Deficiency Ob : Design & System Obsolescence En : Enforcement
--	--	---	---

**Flood Control Project Maintenance  
Levee Inspections**

**Maintenance Issue Types Only, Levee Inspection Report By Mile - Spring 2021**

**Brannan Andrus Levee Maintenance District**

Waterway	Bank	Unit Miles	Inspection Start/End	Inspector
Unit No. 01 Georgiana Slough	Right	6.01	03/17/2021 03/17/2021	David Julian

LM Start	<b>4.26</b>	Rating **	C	Issue No.	<b>9</b>
LM End	<b>4.28</b>	Issue Type +	Ma	Location *	LS
Category	Earthen Levee		GPS Latitude/Longitude		
			Start	End	
Item	Trim / Thin Trees		38.143973 °	38.143728 °	
			-121.601057 °	-121.600885 °	
DWR ID	DWR_NA0002_01_f_2020_9				
Comment Code					
T2 : Thin trees to allow visibility of the ground and room to flood fight.					
Inspector Comment					

No Photos

LM Start	<b>4.54</b>	Rating **	M	Issue No.	<b>130</b>
LM End	<b>4.60</b>	Issue Type +	Ma	Location *	LS
Category	Earthen Levee		GPS Latitude/Longitude		
			Start	End	
Item	Vegetation		38.140542 °	38.139808 °	
			-121.598366 °	-121.597911 °	
DWR ID	DWR_NA0002_01_s_2021_130				
Comment Code					
V1 : Control annual grass and weeds on the levee slopes and easements.					
Inspector Comment					

No Photos

LM Start	<b>4.54</b>	Rating **	M	Issue No.	<b>129</b>
LM End	<b>4.60</b>	Issue Type +	Ma	Location *	WS
Category	Earthen Levee		GPS Latitude/Longitude		
			Start	End	
Item	Vegetation		38.140540 °	38.139806 °	
			-121.598366 °	-121.597909 °	
DWR ID	DWR_NA0002_01_s_2021_129				
Comment Code					
V1 : Control annual grass and weeds on the levee slopes and easements.					
Inspector Comment					

No Photos

<b>* Location</b> LS : Land Side    N/A : Not Applicable WS : Water Side CR : Crown	<b>** Rating</b> A : Acceptable M : Minimally Acceptable U : Unacceptable	N : Not Inspected/Rated C : Corrected A/W : Acceptable but Monitor & Maintain	<b>+ Issue Type</b> Ma : Maintenance Deficiency Ob : Design & System Obsolescence En : Enforcement
--	--	---	---

**Flood Control Project Maintenance  
Levee Inspections**

## Maintenance Issue Types Only, Levee Inspection Report By Mile - Spring 2021

### Brannan Andrus Levee Maintenance District

Waterway	Bank	Unit Miles	Inspection Start/End	Inspector
Unit No. 01 Georgiana Slough	Right	6.01	03/17/2021 03/17/2021	David Julian

LM Start	4.55	Rating **	U	Issue No.	85
LM End	4.55	Issue Type +	Ma	Location *	LS
Category	Earthen Levee			GPS Latitude/Longitude	
				Start	End
Item	Vegetation			38.140402 °	38.140402 °
				-121.598275 °	-121.598275 °
DWR ID	DWR_NA0002_01_s _ 2019_85				
Comment Code					
V2 : Remove the wild growth other than native grasses from the levee slopes.					
Inspector Comment					
Remove blackberries from landside toe					

Photo 1 of 1 : SP\_2021\_NA0002\_62\_85\_20210226\_00035.jpg



View looking downslope at blackberries at the landside slope (Spring 2019).

LM Start	4.86	Rating **	M	Issue No.	10
LM End	4.95	Issue Type +	Ma	Location *	LS
Category	Earthen Levee			GPS Latitude/Longitude	
				Start	End
Item	Vegetation			38.136470 °	38.135553 °
				-121.595643 °	-121.594532 °
DWR ID	DWR_NA0002_01_f _ 2020_10				
Comment Code					
V1 : Control annual grass and weeds on the levee slopes and easements.					
Inspector Comment					

No Photos

LM Start	4.99	Rating **	M	Issue No.	12
LM End	4.99	Issue Type +	Ma	Location *	WS
Category	Earthen Levee			GPS Latitude/Longitude	
				Start	End
Item	Trim / Thin Trees			38.135118 °	38.135118 °
				-121.594108 °	-121.594108 °
DWR ID	DWR_NA0002_01_f _ 2020_12				
Comment Code					
T1 : Trim trees to at least five feet above ground level.					
Inspector Comment					

No Photos

<b>* Location</b> LS : Land Side    N/A : Not Applicable WS : Water Side CR : Crown	<b>** Rating</b> A : Acceptable M : Minimally Acceptable U : Unacceptable	N : Not Inspected/Rated C : Corrected A/W : Acceptable but Monitor & Maintain	<b>+ Issue Type</b> Ma : Maintenance Deficiency Ob : Design & System Obsolescence En : Enforcement
--	--	---	---

**Flood Control Project Maintenance  
Levee Inspections**

**Maintenance Issue Types Only, Levee Inspection Report By Mile - Spring 2021**

**Brannan Andrus Levee Maintenance District**

Waterway	Bank	Unit Miles	Inspection Start/End	Inspector
Unit No. 01 Georgiana Slough	Right	6.01	03/17/2021 03/17/2021	David Julian

LM Start	5.26	Rating **	M	Issue No.	133
LM End	5.44	Issue Type +	Ma	Location *	LS
Category	Earthen Levee			GPS Latitude/Longitude	
				Start	End
Item	Vegetation			38.132154 °	38.130114 °
				-121.590834 °	-121.588662 °
DWR ID	DWR_NA0002_01_s_2021_133				
Comment Code					
V1 : Control annual grass and weeds on the levee slopes and easements.					
Inspector Comment					

No Photos

LM Start	5.26	Rating **	M	Issue No.	15
LM End	5.64	Issue Type +	Ma	Location *	WS
Category	Earthen Levee			GPS Latitude/Longitude	
				Start	End
Item	Vegetation			38.132160 °	38.129252 °
				-121.590803 °	-121.585248 °
DWR ID	DWR_NA0002_01_f_2020_15				
Comment Code					
V1 : Control annual grass and weeds on the levee slopes and easements.					
Inspector Comment					

No Photos

LM Start	5.44	Rating **	M	Issue No.	23
LM End	5.57	Issue Type +	Ma	Location *	LS
Category	Earthen Levee			GPS Latitude/Longitude	
				Start	End
Item	Vegetation			38.130115 °	38.129359 °
				-121.588662 °	-121.586487 °
DWR ID	DWR_NA0002_01_s_2012_23				
Comment Code					
V2 : Remove the wild growth other than native grasses from the levee slopes.					
Inspector Comment					

Photo 1 of 1 : SP\_2021\_NA0002\_62\_23\_20210226\_00009.jpg



View looking downstream at vegetation at the landside toe (Fall 2019).

<b>* Location</b> LS : Land Side    N/A : Not Applicable WS : Water Side CR : Crown	<b>** Rating</b> A : Acceptable M : Minimally Acceptable U : Unacceptable	N : Not Inspected/Rated C : Corrected A/W : Acceptable but Monitor & Maintain	<b>+ Issue Type</b> Ma : Maintenance Deficiency Ob : Design & System Obsolescence En : Enforcement
--	--	---	---

**Flood Control Project Maintenance  
Levee Inspections**

**Maintenance Issue Types Only, Levee Inspection Report By Mile - Spring 2021**

**Brannan Andrus Levee Maintenance District**

Waterway	Bank	Unit Miles	Inspection Start/End	Inspector
Unit No. 01 Georgiana Slough	Right	6.01	03/17/2021 03/17/2021	David Julian

LM Start	<b>5.64</b>	Rating **	<b>C</b>	Issue No.	<b>81</b>
LM End	<b>5.84</b>	Issue Type +	<b>Ma</b>	Location *	<b>WS</b>
Category	Earthen Levee		GPS Latitude/Longitude		
			Start	End	
Item	Vegetation		38.129250 °	38.129637 °	
			-121.585193 °	-121.581648 °	
DWR ID	DWR_NA0002_01_f_2018_81				
Comment Code					
V2 : Remove the wild growth other than native grasses from the levee slopes.					
Inspector Comment					

No Photos

LM Start	<b>5.67</b>	Rating **	<b>M</b>	Issue No.	<b>134</b>
LM End	<b>5.84</b>	Issue Type +	<b>Ma</b>	Location *	<b>LS</b>
Category	Earthen Levee		GPS Latitude/Longitude		
			Start	End	
Item	Vegetation		38.129276 °	38.129640 °	
			-121.584692 °	-121.581688 °	
DWR ID	DWR_NA0002_01_s_2021_134				
Comment Code					
V1 : Control annual grass and weeds on the levee slopes and easements.					
Inspector Comment					

No Photos

<b>* Location</b> LS : Land Side    N/A : Not Applicable WS : Water Side CR : Crown	<b>** Rating</b> A : Acceptable M : Minimally Acceptable U : Unacceptable	N : Not Inspected/Rated C : Corrected A/W : Acceptable but Monitor & Maintain	<b>+ Issue Type</b> Ma : Maintenance Deficiency Ob : Design & System Obsolescence En : Enforcement
--	--	---	---

**Flood Control Project Maintenance  
Levee Inspections**

**Maintenance Issue Types Only, Levee Inspection Report By Mile - Spring 2021**

**Brannan Andrus Levee Maintenance District**

Waterway	Bank	Unit Miles	Inspection Start/End	Inspector
Unit No. 02 Sacramento River	Left	11.54	04/26/2021 04/26/2021	David Julian

LM Start	<b>0.00</b>	Rating **	M	Issue No.	<b>63</b>
LM End	<b>3.14</b>	Issue Type +	Ma	Location *	LS
Category	Earthen Levee		GPS Latitude/Longitude		
			Start	End	
Item	Vegetation		38.191865 °	38.162596 °	
			-121.567674 °	-121.608538 °	
DWR ID	DWR_NA0002_02_s_2021_63				
Comment Code					
V1 : Control annual grass and weeds on the levee slopes and easements.					
Inspector Comment					

No Photos

LM Start	<b>0.03</b>	Rating **	M	Issue No.	<b>58</b>
LM End	<b>2.12</b>	Issue Type +	Ma	Location *	WS
Category	Earthen Levee		GPS Latitude/Longitude		
			Start	End	
Item	Vegetation		38.191734 °	38.170428 °	
			-121.568175 °	-121.593577 °	
DWR ID	DWR_NA0002_02_s_2021_58				
Comment Code					
V1 : Control annual grass and weeds on the levee slopes and easements.					
Inspector Comment					

No Photos

LM Start	<b>0.72</b>	Rating **	U	Issue No.	<b>97</b>
LM End	<b>0.72</b>	Issue Type +	Ma	Location *	LS
Category	Earthen Levee		GPS Latitude/Longitude		
			Start	End	
Item	Trim / Thin Trees		38.187102 °	38.187102 °	
			-121.579463 °	-121.579463 °	
DWR ID	DWR_NA0002_02_f_2018_97				
Comment Code					
T1 : Trim trees to at least five feet above ground level.					
Inspector Comment					
Fig tree on the landside toe.					

Photo 1 of 1 : SP\_2021\_NA0002\_63\_97\_20210226\_00037.jpg



Looking east at untrimmed fig tree at landward toe.

\* Location  
LS : Land Side    N/A : Not Applicable  
WS : Water Side  
CR : Crown

\*\* Rating  
A : Acceptable                      N : Not Inspected/Rated  
M : Minimally Acceptable        C : Corrected  
U : Unacceptable                  A/W : Acceptable but Monitor & Maintain

+ Issue Type  
Ma : Maintenance Deficiency  
Ob : Design & System Obsolescence  
En : Enforcement

# Brannan Andrus Levee Maintenance District

* Location	** Rating	+ Issue Type
LS : Land Side    N/A : Not Applicable	A : Acceptable                      N : Not Inspected/Rated	Ma : Maintenance Deficiency
WS : Water Side	M : Minimally Acceptable            C : Corrected	Ob : Design & System Obsolescence
CR : Crown	U : Unacceptable                      A/W : Acceptable but Monitor & Maintain	En : Enforcement



**Flood Control Project Maintenance  
Levee Inspections**

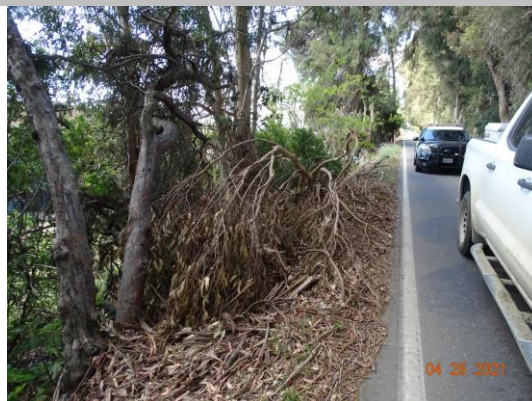
## Maintenance Issue Types Only, Levee Inspection Report By Mile - Spring 2021

### Brannan Andrus Levee Maintenance District

Waterway	Bank	Unit Miles	Inspection Start/End	Inspector
Unit No. 02 Sacramento River	Left	11.54	04/26/2021 04/26/2021	David Julian

LM Start	1.81	Rating **	U	Issue No.	96
LM End	1.81	Issue Type +	Ma	Location *	LS
Category	Earthen Levee			GPS Latitude/Longitude	
				Start	End
Item	Encroachments			38.174316 °	38.174316 °
				-121.590830 °	-121.590830 °
DWR ID	DWR_NA0002_02_s_2021_96				
Comment Code					
TR : Tree or limb					
Inspector Comment					
Remove large down tree branch on landside slope.					

Photo 1 of 1 : SP\_2021\_NA0002\_63\_96\_20210426\_00161.jpg



Down tree limb on the landside hinge (Spring 2021).

LM Start	1.88	Rating **	U	Issue No.	93
LM End	1.89	Issue Type +	Ma	Location *	LS
Category	Earthen Levee			GPS Latitude/Longitude	
				Start	End
Item	Encroachments			38.173403 °	38.173221 °
				-121.591389 °	-121.591512 °
DWR ID	DWR_NA0002_02_f_2015_93				
Comment Code					
TR : Tree or limb					
Inspector Comment					
Broken tree limbs are on the landside slope and toe.					

Photo 1 of 1 : SP\_2021\_NA0002\_63\_93\_20210226\_00035.jpg



Down tree on the landside slope and toe (Fall 2019).

LM Start	1.98	Rating **	M	Issue No.	48
LM End	1.98	Issue Type +	Ma	Location *	WS
Category	Earthen Levee			GPS Latitude/Longitude	
				Start	End
Item	Encroachments			38.172134 °	38.172134 °
				-121.592260 °	-121.592260 °
DWR ID	DWR_NA0002_02_f_2020_48				
Comment Code					
TR : Tree or limb					
Inspector Comment					

No Photos

<b>* Location</b> LS : Land Side    N/A : Not Applicable WS : Water Side CR : Crown	<b>** Rating</b> A : Acceptable M : Minimally Acceptable U : Unacceptable	N : Not Inspected/Rated C : Corrected A/W : Acceptable but Monitor & Maintain	<b>+ Issue Type</b> Ma : Maintenance Deficiency Ob : Design & System Obsolescence En : Enforcement
--	--	---	---

**Flood Control Project Maintenance  
Levee Inspections**

## Maintenance Issue Types Only, Levee Inspection Report By Mile - Spring 2021

### Brannan Andrus Levee Maintenance District

Waterway	Bank	Unit Miles	Inspection Start/End	Inspector
Unit No. 02 Sacramento River	Left	11.54	04/26/2021 04/26/2021	David Julian

LM Start	1.99	Rating **	U	Issue No.	95
LM End	1.99	Issue Type +	Ma	Location *	LS
Category	Earthen Levee			GPS Latitude/Longitude	
				Start	End
Item	Encroachments			38.171939 °	38.171939 °
				-121.592337 °	-121.592337 °
DWR ID	DWR_NA0002_02_s_2021_95				
Comment Code					
TR : Tree or limb					
Inspector Comment					
Remove down tree limbs on the landside slope.					

Photo 1 of 1 : SP\_2021\_NA0002\_63\_95\_20210426\_00159.jpg



View of down tree limbs on the landside slope (Spring 2021).

LM Start	2.16	Rating **	M	Issue No.	120
LM End	2.16	Issue Type +	Ma	Location *	LS
Category	Earthen Levee			GPS Latitude/Longitude	
				Start	End
Item	Trim / Thin Trees			38.169853 °	38.169853 °
				-121.593828 °	-121.593828 °
DWR ID	DWR_NA0002_02_f_2016_120				
Comment Code					
T2 : Thin trees to allow visibility of the ground and room to flood fight.					
Inspector Comment					
Fig tree on the landside slope.					

Photo 1 of 1 : SP\_2021\_NA0002\_63\_120\_20210226\_00048.jpg



View of young fig tree on the landside slope (Fall 2019).

LM Start	2.34	Rating **	M	Issue No.	25
LM End	2.38	Issue Type +	Ma	Location *	LS
Category	Earthen Levee			GPS Latitude/Longitude	
				Start	End
Item	Trim / Thin Trees			38.167627 °	38.167152 °
				-121.595538 °	-121.595997 °
DWR ID	DWR_NA0002_02_s_2012_25				
Comment Code					
T2 : Thin trees to allow visibility of the ground and room to flood fight.					
Inspector Comment					

Photo 1 of 1 : SP\_2021\_NA0002\_63\_25\_20210226\_00005.jpg



Looking southeast at trees at landward shoulder. (Spring 2015)

**\* Location**  
LS : Land Side    N/A : Not Applicable  
WS : Water Side  
CR : Crown

**\*\* Rating**  
A : Acceptable                      N : Not Inspected/Rated  
M : Minimally Acceptable        C : Corrected  
U : Unacceptable                  A/W : Acceptable but Monitor & Maintain

**+ Issue Type**  
Ma : Maintenance Deficiency  
Ob : Design & System Obsolescence  
En : Enforcement

**Flood Control Project Maintenance  
Levee Inspections**

## Maintenance Issue Types Only, Levee Inspection Report By Mile - Spring 2021

### Brannan Andrus Levee Maintenance District

Waterway	Bank	Unit Miles	Inspection Start/End	Inspector
Unit No. 02 Sacramento River	Left	11.54	04/26/2021 04/26/2021	David Julian

LM Start	2.42	Rating **	U	Issue No.	99
LM End	2.42	Issue Type +	Ma	Location *	LS
Category	Earthen Levee			GPS Latitude/Longitude	
				Start	End
Item	Vegetation			38.166772 °	38.166772 °
				-121.596667 °	-121.596667 °
DWR ID	DWR_NA0002_02_s _ 2014_99				
Comment Code					
V7 : Trees / Woody Vegetation					
Inspector Comment					
Dense willows on the landside slope.					

Photo 1 of 1 : SP\_2021\_NA0002\_63\_99\_20210226\_00039.jpg



View looking downstream at vegetation on the landside slope (Fall 2019).

LM Start	2.45	Rating **	M	Issue No.	62
LM End	3.12	Issue Type +	Ma	Location *	WS
Category	Earthen Levee			GPS Latitude/Longitude	
				Start	End
Item	Vegetation			38.166586 °	38.162692 °
				-121.597089 °	-121.608226 °
DWR ID	DWR_NA0002_02_s _ 2021_62				
Comment Code					
V1 : Control annual grass and weeds on the levee slopes and easements.					
Inspector Comment					

No Photos

**\* Location**  
 LS : Land Side    N/A : Not Applicable  
 WS : Water Side  
 CR : Crown

**\*\* Rating**  
 A : Acceptable                      N : Not Inspected/Rated  
 M : Minimally Acceptable        C : Corrected  
 U : Unacceptable                  A/W : Acceptable but Monitor & Maintain

**+ Issue Type**  
 Ma : Maintenance Deficiency  
 Ob : Design & System Obsolescence  
 En : Enforcement

**Flood Control Project Maintenance  
Levee Inspections**

**Maintenance Issue Types Only, Levee Inspection Report By Mile - Spring 2021**

**Brannan Andrus Levee Maintenance District**

Waterway	Bank	Unit Miles	Inspection Start/End	Inspector
Unit No. 02 Sacramento River	Left	11.54	04/26/2021 04/26/2021	David Julian

LM Start	2.54	Rating **	M	Issue No.	9	
LM End	2.54	Issue Type +	Ma	Location *		
Category	Supplemental			GPS Latitude/Longitude		
				Start	End	
Item	DWR UCIP LMA Responsibility			38.165980 °	38.165980 °	
				-121.598520 °	-121.598520 °	
DWR ID	21879					
Comment Code						
Inspector Comment						
FS_ID:53389 DS_ID:21879 EP_NO: N/A Repair Type: Non-Urgent Crossing Status: Found UCIP Comments: 07/12/2018 Tunnel is open on both sides. No integrity issue observed, therefore crossing downgraded to "Non-Urgent". (O.Yakimov-DWR UCIP)10/24/2016 same as previous inspection culvert is open on both ends. WS blocked by blankets -- WS structure is being used as a shelter. (O. Magana - DWR UCIP)04/18/2013 Culvert open on both ends. Needs to be abandoned properly. (W. Wylie - DWR UCIP) FIELD_STRUCT_DESC: *ABANDONED* 42-inch by 42-inch open reinforced concrete drainage culvert through the levee, 6 feet below the crown. [Additional Reference(s): DWR Levee Log, 2005, 3-foot by 3.5-foot culvert listed. USACE Sacramento O&M Manual 103, June 1954, (RM 18.16) Drawing No. 6-13-1100]. FS Date: 7/12/2018 2:59:33 PM						

Photo 1 of 3 : UCIP\_SP\_2021\_53389\_19773.jpg



Concrete tunnel open on both ends.

LM Start	<b>2.54</b>	Rating **	M	Issue No.	<b>9 (cont)</b>
LM End	<b>2.54</b>	Issue Type +	Ma	Location *	

Photo 2 of 3 : UCIP\_SP\_2021\_53389\_19772.jpg



Top of concrete tunnel on LS shoulder.

<b>* Location</b> LS : Land Side    N/A : Not Applicable WS : Water Side CR : Crown	<b>** Rating</b> A : Acceptable M : Minimally Acceptable U : Unacceptable	N : Not Inspected/Rated C : Corrected A/W : Acceptable but Monitor & Maintain	<b>+ Issue Type</b> Ma : Maintenance Deficiency Ob : Design & System Obsolescence En : Enforcement
--	--	---	---

**Flood Control Project Maintenance  
Levee Inspections**

**Maintenance Issue Types Only, Levee Inspection Report By Mile - Spring 2021**

**Brannan Andrus Levee Maintenance District**

Waterway	Bank	Unit Miles	Inspection Start/End	Inspector
Unit No. 02 Sacramento River	Left	11.54	04/26/2021 04/26/2021	David Julian

LM Start	2.54	Rating **	M	Issue No.	9 (cont)
LM End	2.54	Issue Type +	Ma	Location *	
Category	Supplemental			GPS Latitude/Longitude	
				Start	End
Item	DWR UCIP LMA Responsibility			38.165980 °	38.165980 °
				-121.598520 °	-121.598520 °
DWR ID	21879				

Photo 3 of 3 : UCIP\_SP\_2021\_53389\_19771.jpg



Concrete tunnel on LS shoulder.

LM Start	2.56	Rating **	M	Issue No.	82
LM End	2.56	Issue Type +	Ma	Location *	WS
Category	Earthen Levee			GPS Latitude/Longitude	
				Start	End
Item	Slope Stability			38.165898 °	38.165898 °
				-121.598888 °	-121.598888 °
DWR ID	DWR_NA0002_02_f_2017_82				
Comment Code					
S2 : Repair the levee slope damaged by foot traffic and prevent access where possible.					
Inspector Comment					
There is a footpath digging into the levee slope.					

Photo 1 of 1 : SP\_2021\_NA0002\_63\_82\_20210226\_00031.jpg



Looking northwest at the waterside slope.

<b>* Location</b> LS : Land Side    N/A : Not Applicable WS : Water Side CR : Crown	<b>** Rating</b> A : Acceptable M : Minimally Acceptable U : Unacceptable	<b>+ Issue Type</b> Ma : Maintenance Deficiency Ob : Design & System Obsolescence En : Enforcement
--	--	---

**Flood Control Project Maintenance  
Levee Inspections**

## Maintenance Issue Types Only, Levee Inspection Report By Mile - Spring 2021

### Brannan Andrus Levee Maintenance District

Waterway	Bank	Unit Miles	Inspection Start/End	Inspector
Unit No. 02 Sacramento River	Left	11.54	04/26/2021 04/26/2021	David Julian

LM Start	2.57	Rating **	M	Issue No.	10	
LM End	2.57	Issue Type +	Ma	Location *		
Category	Supplemental			GPS Latitude/Longitude		
				Start	End	
Item	DWR UCIP LMA Responsibility			38.165775 °	38.165775 °	
				-121.599048 °	-121.599048 °	
DWR ID	21880					
Comment Code						
Inspector Comment						
FS_ID:53513 DS_ID:21880 EP_NO: N/A Repair Type: Non-Urgent Crossing Status: Found UCIP Comments: 07/12/2018 Tunnel is open on both sides. No integrity issue observed, therefore crossing downgraded to "Non-Urgent". (O.Yakimov-DWR UCIP)10/24/2016 same as previous inspection concrete box culvert will need to be abandoned properly. (O. Magana - DWR UCIP)04/18/2013 tunnel should be abandoned properly. (W. Wylie - DWR UCIP) FIELD_STRUCT_DESC: *ABANDONED* 48-inch by 48-inch reinforced concrete drainage culvert through the levee, 6.5-inches below the crown. [Additional Reference(s): DWR Levee Log, 2005. USACE Sacramento O&M Manual 103, June 1954, (RM 18.13) 3-foot by 3-foot concrete box listed, Drawing No. 6-13-1100]. FS Date: 7/12/2018 9:05:37 AM						

LM Start	<b>2.57</b>	Rating **	M	Issue No.	<b>10 (cont)</b>
LM End	<b>2.57</b>	Issue Type +	Ma	Location *	

Photo 1 of 3 : UCIP\_SP\_2021\_53513\_19776.jpg



Tunnel open on LS shoulder.

Photo 2 of 3 : UCIP\_SP\_2021\_53513\_77578.jpg



Concrete tunnel on LS shoulder.

<b>* Location</b> LS : Land Side    N/A : Not Applicable WS : Water Side CR : Crown	<b>** Rating</b> A : Acceptable M : Minimally Acceptable U : Unacceptable	N : Not Inspected/Rated C : Corrected A/W : Acceptable but Monitor & Maintain	<b>+ Issue Type</b> Ma : Maintenance Deficiency Ob : Design & System Obsolescence En : Enforcement
--	--	---	---

**Flood Control Project Maintenance  
Levee Inspections**

**Maintenance Issue Types Only, Levee Inspection Report By Mile - Spring 2021**

**Brannan Andrus Levee Maintenance District**

Waterway	Bank	Unit Miles	Inspection Start/End	Inspector
Unit No. 02 Sacramento River	Left	11.54	04/26/2021 04/26/2021	David Julian

LM Start	2.57	Rating **	M	Issue No.	10 (cont)
LM End	2.57	Issue Type +	Ma	Location *	
Category	Supplemental			GPS Latitude/Longitude	
				Start	End
Item	DWR UCIP LMA Responsibility			38.165775 °	38.165775 °
				-121.599048 °	-121.599048 °
DWR ID	21880				

Photo 3 of 3 : UCIP\_SP\_2021\_53513\_19774.jpg



10'X5' concrete box on WS slope, filled with soil.

LM Start	2.58	Rating **	U	Issue No.	74
LM End	2.63	Issue Type +	Ma	Location *	WS
Category	Supplemental			GPS Latitude/Longitude	
				Start	End
Item	2017 USACE Erosion Survey			38.165945 °	38.165498 °
				-121.599345 °	-121.600080 °
DWR ID	DWR_NA0002_02_f_2018_74				
Comment Code					
Inspector Comment					
2017 Site ID: SAC 18.1 L					
Status: Critical					
2017 Field Notes: Upgraded to critical. Vertical slope face behind a tree that is likely to pop-out soon.					
Site History: 2009 - Short reach of vertical bank at the toe. 2010 - Large tree is getting ready to fall in. 2015 - Freshly exposed tree roots.					

No Photos

**\* Location**  
LS : Land Side    N/A : Not Applicable  
WS : Water Side  
CR : Crown

**\*\* Rating**  
A : Acceptable                      N : Not Inspected/Rated  
M : Minimally Acceptable        C : Corrected  
U : Unacceptable                  A/W : Acceptable but Monitor & Maintain

**+ Issue Type**  
Ma : Maintenance Deficiency  
Ob : Design & System Obsolescence  
En : Enforcement

**Flood Control Project Maintenance  
Levee Inspections**

## Maintenance Issue Types Only, Levee Inspection Report By Mile - Spring 2021

### Brannan Andrus Levee Maintenance District

Waterway	Bank	Unit Miles	Inspection Start/End	Inspector
Unit No. 02 Sacramento River	Left	11.54	04/26/2021 04/26/2021	David Julian

LM Start	2.84	Rating **	M	Issue No.	14
LM End	2.84	Issue Type +	Ma	Location *	
Category	Supplemental			GPS Latitude/Longitude	
				Start	End
Item	DWR UCIP LMA Responsibility			38.163850 °	38.163850 °
				-121.603317 °	-121.603317 °
DWR ID	21882				
Comment Code					
Inspector Comment					
FS_ID:53514 DS_ID:21882 EP_NO: N/A Repair Type: Non-Urgent Crossing Status: Found UCIP Comments: 07/12/2018 Tunnel is open on both ends. No integrity issue observed, therefore crossing downgraded to "Non-Urgent". (O.Yakimov-DWR UCIP)10/24/2016 same as previous inspection tunnel is opened on both ends. (O. Magana - DWR UCIP)04/18/2013 Tunnel open on both ends and should be abandoned properly. (W. Wylie - DWR UCIP) FIELD_STRUCT_DESC: *ABANDONED* 48-inch by 72-inch reinforced concrete drainage culvert through the levee, 1 foot below the crown. [Additional Reference(s): DWR Levee Log, 2005, 4-foot by 4.5-foot culvert listed. USACE Sacramento O&M Manual 103, June 1954, (RM 17.89) 48-inch by 52-inch concrete box listed, Drawing No. 6-13-1100]. FS Date: 7/12/2018 9:07:49 AM					

LM Start	<b>2.84</b>	Rating **	M	Issue No.	<b>14 (cont)</b>
LM End	<b>2.84</b>	Issue Type +	Ma	Location *	

Photo 1 of 3 : UCIP\_SP\_2021\_53514\_19782.jpg



Entrance to tunnel on LS slope.

Photo 2 of 3 : UCIP\_SP\_2021\_53514\_19781.jpg



Tunnel opening on WS slope.

<b>* Location</b> LS : Land Side    N/A : Not Applicable WS : Water Side CR : Crown	<b>** Rating</b> A : Acceptable M : Minimally Acceptable U : Unacceptable	N : Not Inspected/Rated C : Corrected A/W : Acceptable but Monitor & Maintain	<b>+ Issue Type</b> Ma : Maintenance Deficiency Ob : Design & System Obsolescence En : Enforcement
--	--	---	---

**Flood Control Project Maintenance  
Levee Inspections**

## Maintenance Issue Types Only, Levee Inspection Report By Mile - Spring 2021

### Brannan Andrus Levee Maintenance District

Waterway	Bank	Unit Miles	Inspection Start/End	Inspector
Unit No. 02 Sacramento River	Left	11.54	04/26/2021 04/26/2021	David Julian

LM Start	2.84	Rating **	M	Issue No.	14 (cont)
LM End	2.84	Issue Type +	Ma	Location *	
Category	Supplemental			GPS Latitude/Longitude	
				Start	End
Item	DWR UCIP LMA Responsibility			38.163850 °	38.163850 °
				-121.603317 °	-121.603317 °
DWR ID	21882				

Photo 3 of 3 : UCIP\_SP\_2021\_53514\_19780.jpg



Tunnel opening on WS slope.

LM Start	3.12	Rating **	M	Issue No.	53
LM End	3.16	Issue Type +	Ma	Location *	CR
Category	Earthen Levee			GPS Latitude/Longitude	
				Start	End
Item	Vegetation			38.162738 °	38.162551 °
				-121.608169 °	-121.608912 °
DWR ID	DWR_NA0002_02_s_2020_53				
Comment Code					
V9 : Keep the crown roadway free of vegetation.					
Inspector Comment					

No Photos

LM Start	3.38	Rating **	M	Issue No.	65
LM End	4.24	Issue Type +	Ma	Location *	WS
Category	Earthen Levee			GPS Latitude/Longitude	
				Start	End
Item	Vegetation			38.162408 °	38.165850 °
				-121.612984 °	-121.627982 °
DWR ID	DWR_NA0002_02_s_2021_65				
Comment Code					
V1 : Control annual grass and weeds on the levee slopes and easements.					
Inspector Comment					

No Photos

<b>* Location</b> LS : Land Side    N/A : Not Applicable WS : Water Side CR : Crown	<b>** Rating</b> A : Acceptable M : Minimally Acceptable U : Unacceptable	N : Not Inspected/Rated C : Corrected A/W : Acceptable but Monitor & Maintain	<b>+ Issue Type</b> Ma : Maintenance Deficiency Ob : Design & System Obsolescence En : Enforcement
--	--	---	---

**Flood Control Project Maintenance  
Levee Inspections**

**Maintenance Issue Types Only, Levee Inspection Report By Mile - Spring 2021**

**Brannan Andrus Levee Maintenance District**

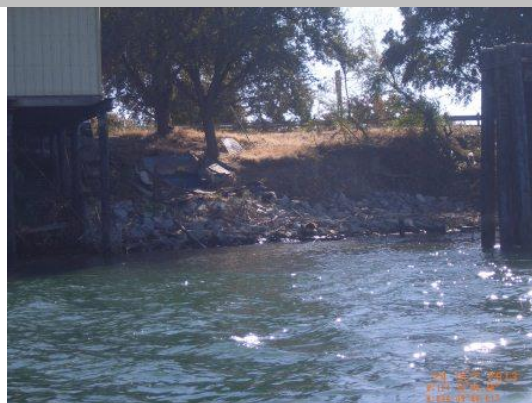
Waterway	Bank	Unit Miles	Inspection Start/End	Inspector
Unit No. 02 Sacramento River	Left	11.54	04/26/2021 04/26/2021	David Julian

LM Start	3.40	Rating **	M	Issue No.	64
LM End	3.40	Issue Type +	Ma	Location *	WS
Category	Earthen Levee			GPS Latitude/Longitude	
				Start	End
Item	Slope Stability			38.162449 °	38.162449 °
				-121.613390 °	-121.613390 °
DWR ID	DWR_NA0002_02_s _ 2020_64				
Comment Code					
S2 : Repair the levee slope damaged by foot traffic and prevent access where possible.					
Inspector Comment					

No Photos

LM Start	3.43	Rating **	U	Issue No.	75
LM End	3.56	Issue Type +	Ma	Location *	WS
Category	Supplemental			GPS Latitude/Longitude	
				Start	End
Item	2017 USACE Erosion Survey			38.162459 °	38.162828 °
				-121.613848 °	-121.616263 °
DWR ID	DWR_NA0002_02_f _ 2018_75				
Comment Code					
Inspector Comment					
2017 Site ID: SAC 17.2 L					
Status: Critical					
2017 Field Notes: More rock has been placed in spots along the toe, but it is still insufficient.					
Site History: 2009 - Fluvial erosion, into the levee slope, close to vertical bank with roadway on top. Pilings that were once at the bankline are now 30 ft out. 2010 - Very steep slope with slumps and overturned trees. 2011 - Upgraded to CRITICAL. Sections of vertical slope with highway on top. Heavy vegetation in front of most of the erosion pockets. Structures built into the levee on the upstream end. 2012 - Site continues to worsen. 2013 - Some rock added on the upstream end, but site remains critical.					
2018: Site with erosion almost into roadway still there. Keep as critical.					

Photo 1 of 2 : SP\_2021\_NA0002\_63\_75\_20210226\_00023.jpg



USACE 2013 Photo #1

* Location LS : Land Side    N/A : Not Applicable WS : Water Side CR : Crown		** Rating A : Acceptable M : Minimally Acceptable U : Unacceptable N : Not Inspected/Rated C : Corrected A/W : Acceptable but Monitor & Maintain		+ Issue Type Ma : Maintenance Deficiency Ob : Design & System Obsolescence En : Enforcement	
---	--	--	--	--	--

**Flood Control Project Maintenance  
Levee Inspections**

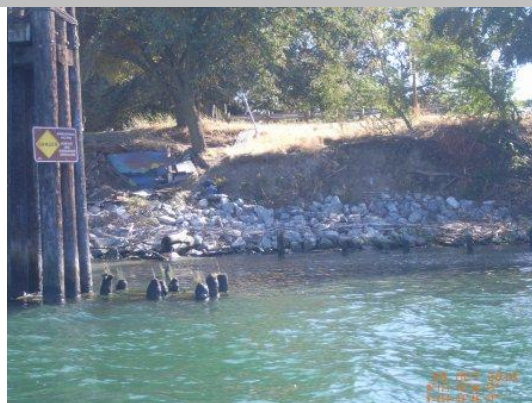
## Maintenance Issue Types Only, Levee Inspection Report By Mile - Spring 2021

### Brannan Andrus Levee Maintenance District

Waterway	Bank	Unit Miles	Inspection Start/End	Inspector
Unit No. 02 Sacramento River	Left	11.54	04/26/2021 04/26/2021	David Julian

LM Start	<b>3.43</b>	Rating **	U	Issue No.	<b>75 (cont)</b>
LM End	<b>3.56</b>	Issue Type +	Ma	Location *	WS
Category	Supplemental		GPS Latitude/Longitude		
			Start	End	
Item	2017 USACE Erosion Survey		38.162459 °	38.162828 °	
			-121.613848 °	-121.616263 °	
DWR ID	DWR_NA0002_02_f_2018_75				

Photo 2 of 2 : SP\_2021\_NA0002\_63\_75\_20210226\_00024.jpg



USACE 2013 Photo #2

LM Start	3.92	Rating **	U	Issue No.	98
LM End	3.92	Issue Type +	Ma	Location *	LS
Category	Earthen Levee			GPS Latitude/Longitude	
				Start	End
Item	Vegetation			38.164019 °	38.164019 °
				-121.622642 °	-121.622642 °
DWR ID	DWR_NA0002_02_s_2019_98				
Comment Code					
V7 : Trees / Woody Vegetation					
Inspector Comment					
Remove arundo from the landside slope.					

Photo 1 of 1 : SP\_2021\_NA0002\_63\_98\_20210226\_00038.jpg



View of arundo on the landside slope (Spring 2019).

LM Start	4.29	Rating **	U	Issue No.	169
LM End	4.29	Issue Type +	Ma	Location *	LS
Category	Earthen Levee			GPS Latitude/Longitude	
				Start	End
Item	Encroachments			38.166258 °	38.166258 °
				-121.628717 °	-121.628717 °
DWR ID	DWR_NA0002_02_f_2018_169				
Comment Code					
TR : Tree or limb					
Inspector Comment					
Remove the downed tree limb from the landside slope.					

Photo 1 of 1 : SP\_2021\_NA0002\_63\_169\_20210426\_00158.jpg



View of down tree limb on the landside slope (Spring 2021).

**\* Location**

LS : Land Side    N/A : Not Applicable  
WS : Water Side  
CR : Crown

**\*\* Rating**

A : Acceptable                      N : Not Inspected/Rated  
M : Minimally Acceptable        C : Corrected  
U : Unacceptable                  A/W : Acceptable but Monitor & Maintain

**+ Issue Type**

Ma : Maintenance Deficiency  
Ob : Design & System Obsolescence  
En : Enforcement

**Flood Control Project Maintenance  
Levee Inspections**

**Maintenance Issue Types Only, Levee Inspection Report By Mile - Spring 2021**

**Brannan Andrus Levee Maintenance District**

Waterway	Bank	Unit Miles	Inspection Start/End	Inspector
Unit No. 02 Sacramento River	Left	11.54	04/26/2021 04/26/2021	David Julian

LM Start	4.29	Rating **	M	Issue No.	113
LM End	4.29	Issue Type +	Ma	Location *	WS
Category	Earthen Levee			GPS Latitude/Longitude	
				Start	End
Item	Encroachments			38.166335 °	38.166335 °
				-121.628785 °	-121.628785 °
DWR ID	DWR_NA0002_02_f_2019_113				
Comment Code					
PR : Prunings					
Inspector Comment					
Remove the prunings from the waterside slope.					

No Photos

LM Start	4.81	Rating **	U	Issue No.	128
LM End	4.99	Issue Type +	Ma	Location *	LS
Category	Earthen Levee			GPS Latitude/Longitude	
				Start	End
Item	Animal Control			38.168831 °	38.169583 °
				-121.637619 °	-121.640698 °
DWR ID	DWR_NA0002_02_f_2019_128				
Comment Code					
A1 : Exterminate rodents and backfill and compact or grout burrows.					
Inspector Comment					
Multiple large squirrel holes.					

Photo 1 of 1 : SP\_2021\_NA0002\_63\_128\_20210226\_00051.jpg



View of multiple large squirrel holes in landside slope (Fall 2019).

LM Start	5.01	Rating **	U	Issue No.	163
LM End	5.01	Issue Type +	Ma	Location *	LS
Category	Earthen Levee			GPS Latitude/Longitude	
				Start	End
Item	Trim / Thin Trees			38.169750 °	38.169750 °
				-121.641107 °	-121.641107 °
DWR ID	DWR_NA0002_02_f_2019_163				
Comment Code					
T2 : Thin trees to allow visibility of the ground and room to flood fight.					
Inspector Comment					
Trim the fig tree on the landside slope and pick up down fig tree limbs.					

Photo 1 of 1 : SP\_2021\_NA0002\_63\_163\_20210226\_00057.jpg



View looking downstream at fig tree on the landside slope (Spring 2019).

<b>* Location</b> LS : Land Side    N/A : Not Applicable WS : Water Side CR : Crown	<b>** Rating</b> A : Acceptable M : Minimally Acceptable U : Unacceptable	N : Not Inspected/Rated C : Corrected A/W : Acceptable but Monitor & Maintain	<b>+ Issue Type</b> Ma : Maintenance Deficiency Ob : Design & System Obsolescence En : Enforcement
--	--	---	---

**Flood Control Project Maintenance  
Levee Inspections**

## Maintenance Issue Types Only, Levee Inspection Report By Mile - Spring 2021

### Brannan Andrus Levee Maintenance District

Waterway	Bank	Unit Miles	Inspection Start/End	Inspector
Unit No. 02 Sacramento River	Left	11.54	04/26/2021 04/26/2021	David Julian

LM Start	5.25	Rating **	U	Issue No.	124
LM End	5.29	Issue Type +	Ma	Location *	LS
Category	Earthen Levee			GPS Latitude/Longitude	
				Start	End
Item	Animal Control			38.171928 °	38.171873 °
				-121.644455 °	-121.645082 °
DWR ID	DWR_NA0002_02_f_2017_124				
Comment Code					
A1 : Exterminate rodents and backfill and compact or grout burrows.					
Inspector Comment					
Amount of rodent holes appears to have increased since previous inspection.					

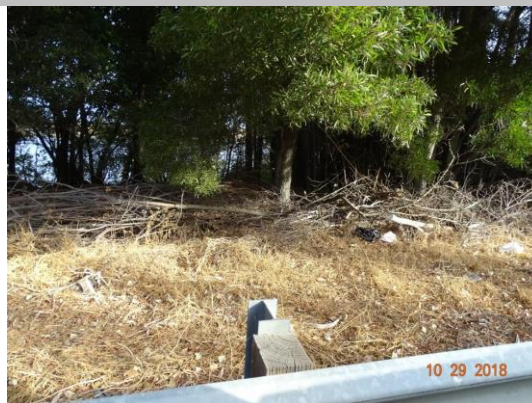
Photo 1 of 1 : SP\_2021\_NA0002\_63\_124\_20210226\_00050.jpg



View looking downstream at animal holes in the landside slope (Fall 2020).

LM Start	5.36	Rating **	M	Issue No.	115
LM End	5.36	Issue Type +	Ma	Location *	WS
Category	Earthen Levee			GPS Latitude/Longitude	
				Start	End
Item	Encroachments			38.171892 °	38.171892 °
				-121.646387 °	-121.646387 °
DWR ID	DWR_NA0002_02_f_2018_115				
Comment Code					
PR : Prunings					
Inspector Comment					
Remove the prunings from the waterside slope.					

Photo 1 of 1 : SP\_2021\_NA0002\_63\_115\_20210226\_00045.jpg



View of prunings on the waterside slope (October 2018).

LM Start	5.43	Rating **	M	Issue No.	121
LM End	5.43	Issue Type +	Ma	Location *	WS
Category	Earthen Levee			GPS Latitude/Longitude	
				Start	End
Item	Trim / Thin Trees			38.171837 °	38.171837 °
				-121.647735 °	-121.647735 °
DWR ID	DWR_NA0002_02_f_2018_121				
Comment Code					
T2 : Thin trees to allow visibility of the ground and room to flood fight.					
Inspector Comment					

No Photos

<b>* Location</b> LS : Land Side    N/A : Not Applicable WS : Water Side CR : Crown	<b>** Rating</b> A : Acceptable M : Minimally Acceptable U : Unacceptable	N : Not Inspected/Rated C : Corrected A/W : Acceptable but Monitor & Maintain	<b>+ Issue Type</b> Ma : Maintenance Deficiency Ob : Design & System Obsolescence En : Enforcement
--	--	---	---

**Flood Control Project Maintenance  
Levee Inspections**

## Maintenance Issue Types Only, Levee Inspection Report By Mile - Spring 2021

### Brannan Andrus Levee Maintenance District

Waterway	Bank	Unit Miles	Inspection Start/End	Inspector
Unit No. 02 Sacramento River	Left	11.54	04/26/2021 04/26/2021	David Julian

LM Start	5.66	Rating **	M	Issue No.	66
LM End	5.69	Issue Type +	Ma	Location *	WS
Category	Earthen Levee			GPS Latitude/Longitude	
				Start	End
Item	Vegetation			38.172395 °	38.172505 °
				-121.651855 °	-121.652231 °
DWR ID	DWR_NA0002_02_s_2021_66				
Comment Code					
V2 : Remove the wild growth other than native grasses from the levee slopes.					
Inspector Comment					
Arundo on waterside slope.					

No Photos

LM Start	5.77	Rating **	M	Issue No.	33	
LM End	5.77	Issue Type +	Ma	Location *		
Category	Supplemental			GPS Latitude/Longitude		
				Start		End
Item	DWR UCIP LMA Responsibility			38.172940 °		38.172940 °
				-121.653700 °		-121.653700 °
DWR ID	21912					
Comment Code						
Inspector Comment						
FS_ID:12778 DS_ID:21912 EP_NO: N/A Repair Type: Non-Urgent Crossing Status: Found UCIP Comments: Pipe abandoned. Erosion on WS slope at location where pipe should be. FIELD_STRUCT_DESC: *ABANDONED* 12-inch drainage pipe of an unknown material through the levee, 13 feet below the crown. Pump and gate valve in pump house at the landside (LS) toe. 1.5-inch electrical conduit along pipe at same location. 42-inch concrete standpipe at the LS toe. [Additional Reference(s): USACE Sacramento O&M Manual 102, April 1959, (RM 14.8) (Reclamation District No. 2067) steel pipe listed FS Date: 5/2/2013						

Photo 1 of 3 : UCIP\_SP\_2021\_12778\_20762.jpg



Conduit at WS toe.

<b>* Location</b> LS : Land Side    N/A : Not Applicable WS : Water Side CR : Crown	<b>** Rating</b> A : Acceptable M : Minimally Acceptable U : Unacceptable	N : Not Inspected/Rated C : Corrected A/W : Acceptable but Monitor & Maintain	<b>+ Issue Type</b> Ma : Maintenance Deficiency Ob : Design & System Obsolescence En : Enforcement
--	--	---	---

**Flood Control Project Maintenance  
Levee Inspections**

**Maintenance Issue Types Only, Levee Inspection Report By Mile - Spring 2021**

**Brannan Andrus Levee Maintenance District**

Waterway	Bank	Unit Miles	Inspection Start/End	Inspector
Unit No. 02 Sacramento River	Left	11.54	04/26/2021 04/26/2021	David Julian

LM Start	<b>5.77</b>	Rating **	M	Issue No.	<b>33 (cont)</b>
LM End	<b>5.77</b>	Issue Type +	Ma	Location *	
Category	Supplemental			GPS Latitude/Longitude	
				Start	End
Item	DWR UCIP LMA Responsibility			38.172940 °	38.172940 °
				-121.653700 °	-121.653700 °
DWR ID	21912				

Photo 2 of 3 : UCIP\_SP\_2021\_12778\_20761.jpg



Erosion along pipe alignment at WS slope.

LM Start	<b>5.77</b>	Rating **	M	Issue No.	<b>33 (cont)</b>
LM End	<b>5.77</b>	Issue Type +	Ma	Location *	

Photo 3 of 3 : UCIP\_SP\_2021\_12778\_20760.jpg



Concrete standpipe and pump on LS toe.

LM Start	5.87	Rating **	M	Issue No.	72
LM End	6.74	Issue Type +	Ma	Location *	WS
Category	Earthen Levee			GPS Latitude/Longitude	
				Start	End
Item	Vegetation			38.173517 °	38.169776 °
				-121.655413 °	-121.668859 °
DWR ID	DWR_NA0002_02_s_2021_72				
Comment Code					
V1 : Control annual grass and weeds on the levee slopes and easements.					
Inspector Comment					

No Photos

<b>* Location</b> LS : Land Side    N/A : Not Applicable WS : Water Side CR : Crown	<b>** Rating</b> A : Acceptable M : Minimally Acceptable U : Unacceptable	<b>+ Issue Type</b> Ma : Maintenance Deficiency Ob : Design & System Obsolescence En : Enforcement
--	--	---

**Flood Control Project Maintenance  
Levee Inspections**

**Maintenance Issue Types Only, Levee Inspection Report By Mile - Spring 2021**

**Brannan Andrus Levee Maintenance District**

Waterway	Bank	Unit Miles	Inspection Start/End	Inspector
Unit No. 02 Sacramento River	Left	11.54	04/26/2021 04/26/2021	David Julian

LM Start	6.06	Rating **	M	Issue No.	73
LM End	6.06	Issue Type +	Ma	Location *	WS
Category	Earthen Levee			GPS Latitude/Longitude	
				Start	End
Item	Vegetation			38.174697 °	38.174697 °
				-121.658474 °	-121.658474 °
DWR ID	DWR_NA0002_02_s_2021_73				
Comment Code					
V2 : Remove the wild growth other than native grasses from the levee slopes.					
Inspector Comment					
Arundo on the waterside slope.					

No Photos

LM Start	6.07	Rating **	U	Issue No.	122
LM End	6.07	Issue Type +	Ma	Location *	LS
Category	Earthen Levee			GPS Latitude/Longitude	
				Start	End
Item	Animal Control			38.174655 °	38.174655 °
				-121.658643 °	-121.658643 °
DWR ID	DWR_NA0002_02_f_2019_122				
Comment Code					
A1 : Exterminate rodents and backfill and compact or grout burrows.					
Inspector Comment					
Multiple large squirrel holes.					

Photo 1 of 1 : SP\_2021\_NA0002\_63\_122\_20210226\_00049.jpg



View of multiple large squirrel holes in the landside slope (Fall 2019).

LM Start	6.12	Rating **	M	Issue No.	103
LM End	6.18	Issue Type +	Ma	Location *	LS
Category	Earthen Levee			GPS Latitude/Longitude	
				Start	End
Item	Vegetation			38.174670 °	38.174413 °
				-121.659592 °	-121.660623 °
DWR ID	DWR_NA0002_02_f_2015_103				
Comment Code					
V4 : Elderberries are blocking visibility and flood fight capability.					
Inspector Comment					

No Photos

<b>* Location</b> LS : Land Side    N/A : Not Applicable WS : Water Side CR : Crown	<b>** Rating</b> A : Acceptable M : Minimally Acceptable U : Unacceptable	N : Not Inspected/Rated C : Corrected A/W : Acceptable but Monitor & Maintain	<b>+ Issue Type</b> Ma : Maintenance Deficiency Ob : Design & System Obsolescence En : Enforcement
--	--	---	---

**Flood Control Project Maintenance  
Levee Inspections**

## Maintenance Issue Types Only, Levee Inspection Report By Mile - Spring 2021

### Brannan Andrus Levee Maintenance District

Waterway	Bank	Unit Miles	Inspection Start/End	Inspector
Unit No. 02 Sacramento River	Left	11.54	04/26/2021 04/26/2021	David Julian

LM Start	6.12	Rating **	U	Issue No.	130
LM End	6.12	Issue Type +	Ma	Location *	WS
Category	Earthen Levee			GPS Latitude/Longitude	
				Start	End
Item	Vegetation			38.174625 °	38.174625 °
				-121.659661 °	-121.659661 °
DWR ID	DWR_NA0002_02_f_2018_130				
Comment Code					
V4 : Elderberries are blocking visibility and flood fight capability.					
Inspector Comment					

No Photos

LM Start	6.24	Rating **	M	Issue No.	84
LM End	6.24	Issue Type +	Ma	Location *	LS
Category	Earthen Levee			GPS Latitude/Longitude	
				Start	End
Item	Encroachments			38.174143 °	38.174143 °
				-121.661659 °	-121.661659 °
DWR ID	DWR_NA0002_02_f_2017_84				
Comment Code					
TR : Tree or limb					
Inspector Comment					
Dead tree on the landside.					

Photo 1 of 1 : SP\_2021\_NA0002\_63\_84\_20210226\_00032.jpg



View looking downslope at burned tree on the landside slope (Fall 2020).

LM Start	6.32	Rating **	U	Issue No.	13
LM End	6.32	Issue Type +	Ma	Location *	LS
Category	Earthen Levee			GPS Latitude/Longitude	
				Start	End
Item	Encroachments			38.173697 °	38.173697 °
				-121.663082 °	-121.663082 °
DWR ID	DWR_NA0002_02_s_2017_13				
Comment Code					
TR : Tree or limb					
Inspector Comment					
Fallen tree on the landside slope.					

Photo 1 of 1 : SP\_2021\_NA0002\_63\_13\_20210226\_00004.jpg



View of fallen tree on the landside slope (Fall 2019).

**\* Location**

LS : Land Side    N/A : Not Applicable  
WS : Water Side  
CR : Crown

**\*\* Rating**

A : Acceptable                      N : Not Inspected/Rated  
M : Minimally Acceptable        C : Corrected  
U : Unacceptable                  A/W : Acceptable but Monitor & Maintain

**+ Issue Type**

Ma : Maintenance Deficiency  
Ob : Design & System Obsolescence  
En : Enforcement

**Flood Control Project Maintenance  
Levee Inspections**

**Maintenance Issue Types Only, Levee Inspection Report By Mile - Spring 2021**

**Brannan Andrus Levee Maintenance District**

Waterway	Bank	Unit Miles	Inspection Start/End	Inspector
Unit No. 02 Sacramento River	Left	11.54	04/26/2021 04/26/2021	David Julian

LM Start	6.46	Rating **	M	Issue No.	118
LM End	6.46	Issue Type +	Ma	Location *	LS
Category	Earthen Levee			GPS Latitude/Longitude	
				Start	End
Item	Trim / Thin Trees			38.172678 °	38.172678 °
				-121.665280 °	-121.665280 °
DWR ID	DWR_NA0002_02_f_2019_118				
Comment Code					
T2 : Thin trees to allow visibility of the ground and room to flood fight.					
Inspector Comment					

Photo 1 of 1 : SP\_2021\_NA0002\_63\_118\_20210226\_00046.jpg



View of fig tree on the landside slope (Fall 2019).

LM Start	6.82	Rating **	M	Issue No.	87
LM End	7.57	Issue Type +	Ma	Location *	LS
Category	Earthen Levee			GPS Latitude/Longitude	
				Start	End
Item	Vegetation			38.168776 °	38.159011 °
				-121.669435 °	-121.675239 °
DWR ID	DWR_NA0002_02_s_2021_87				
Comment Code					
V1 : Control annual grass and weeds on the levee slopes and easements.					
Inspector Comment					

No Photos

LM Start	6.98	Rating **	U	Issue No.	71
LM End	7.04	Issue Type +	Ma	Location *	WS
Category	Supplemental			GPS Latitude/Longitude	
				Start	End
Item	2017 USACE Erosion Survey			38.166583 °	38.165794 °
				-121.670684 °	-121.671014 °
DWR ID	DWR_NA0002_02_f_2018_71				
Comment Code					
Inspector Comment					
2017 Site ID: SAC 13.6 L					
Status: Critical					
2017 Field Notes: upgraded to critical. nearly vertical face from levee hinge. trees with large root balls likely to fail.					
Site History: 2011 - Large section of bank slumped off.					

Photo 1 of 1 : SP\_2021\_NA0002\_63\_71\_20210226\_00022.jpg



USACE 2013 Photo #1

<b>* Location</b> LS : Land Side    N/A : Not Applicable WS : Water Side CR : Crown	<b>** Rating</b> A : Acceptable M : Minimally Acceptable U : Unacceptable	N : Not Inspected/Rated C : Corrected A/W : Acceptable but Monitor & Maintain	<b>+ Issue Type</b> Ma : Maintenance Deficiency Ob : Design & System Obsolescence En : Enforcement
--	--	---	---

# Brannan Andrus Levee Maintenance District

**Flood Control Project Maintenance  
Levee Inspections**

## Maintenance Issue Types Only, Levee Inspection Report By Mile - Spring 2021

### Brannan Andrus Levee Maintenance District

Waterway	Bank	Unit Miles	Inspection Start/End	Inspector
Unit No. 02 Sacramento River	Left	11.54	04/26/2021 04/26/2021	David Julian

LM Start	7.60	Rating **	U	Issue No.	51
LM End	7.82	Issue Type +	Ma	Location *	WS
Category	Earthen Levee			GPS Latitude/Longitude	
				Start	End
Item	Vegetation			38.158545 °	38.156797 °
				-121.675592 °	-121.678955 °
DWR ID	DWR_NA0002_02_s_2021_51				
Comment Code					
V1 : Control annual grass and weeds on the levee slopes and easements.					
Inspector Comment					

Photo 1 of 1 : SP\_2021\_NA0002\_63\_51\_20210426\_00148.jpg



View looking upstream at vegetation on the waterside slope (Spring 2021).

LM Start	7.73	Rating **	M	Issue No.	83
LM End	7.73	Issue Type +	Ma	Location *	WS
Category	Earthen Levee			GPS Latitude/Longitude	
				Start	End
Item	Encroachments			38.157658 °	38.157658 °
				-121.677767 °	-121.677767 °
DWR ID	DWR_NA0002_02_s_2021_83				
Comment Code					
TR : Tree or limb					
Inspector Comment					
Cut up tree limb on waterside hinge.					

Photo 1 of 1 : SP\_2021\_NA0002\_63\_83\_20210426\_00150.jpg



View of cut-up tree limb on the waterside hinge (Spring 2021).

LM Start	7.85	Rating **	M	Issue No.	54
LM End	8.21	Issue Type +	Ma	Location *	LS
Category	Earthen Levee			GPS Latitude/Longitude	
				Start	End
Item	Vegetation			38.156377 °	38.151670 °
				-121.679257 °	-121.681993 °
DWR ID	DWR_NA0002_02_f_2020_54				
Comment Code					
V1 : Control annual grass and weeds on the levee slopes and easements.					
Inspector Comment					

No Photos

<b>* Location</b> LS : Land Side    N/A : Not Applicable WS : Water Side CR : Crown	<b>** Rating</b> A : Acceptable M : Minimally Acceptable U : Unacceptable	N : Not Inspected/Rated C : Corrected A/W : Acceptable but Monitor & Maintain	<b>+ Issue Type</b> Ma : Maintenance Deficiency Ob : Design & System Obsolescence En : Enforcement
--	--	---	---

**Flood Control Project Maintenance  
Levee Inspections**

**Maintenance Issue Types Only, Levee Inspection Report By Mile - Spring 2021**

**Brannan Andrus Levee Maintenance District**

Waterway	Bank	Unit Miles	Inspection Start/End	Inspector
Unit No. 02 Sacramento River	Left	11.54	04/26/2021 04/26/2021	David Julian

LM Start	7.85	Rating **	M	Issue No.	55
LM End	8.21	Issue Type +	Ma	Location *	WS
Category	Earthen Levee			GPS Latitude/Longitude	
				Start	End
Item	Vegetation			38.156377 °	38.151670 °
				-121.679258 °	-121.681993 °
DWR ID	DWR_NA0002_02_f_2020_55				
Comment Code					
V1 : Control annual grass and weeds on the levee slopes and easements.					
Inspector Comment					

No Photos

LM Start	7.94	Rating **	U	Issue No.	56
LM End	7.94	Issue Type +	Ma	Location *	LS
Category	Earthen Levee			GPS Latitude/Longitude	
				Start	End
Item	Vegetation			38.155375 °	38.155375 °
				-121.680065 °	-121.680065 °
DWR ID	DWR_NA0002_02_f_2020_56				
Comment Code					
V4 : Elderberries are blocking visibility and flood fight capability.					
Inspector Comment					

No Photos

LM Start	8.17	Rating **	U	Issue No.	92
LM End	8.17	Issue Type +	Ma	Location *	WS
Category	Earthen Levee			GPS Latitude/Longitude	
				Start	End
Item	Vegetation			38.152255 °	38.152255 °
				-121.681607 °	-121.681607 °
DWR ID	DWR_NA0002_02_f_2019_92				
Comment Code					
V7 : Trees / Woody Vegetation					
Inspector Comment					
Remove arundo on the waterside slope.					

Photo 1 of 1 : SP\_2021\_NA0002\_63\_92\_20210426\_00154.jpg



View of arundo on the waterside slope (Spring 2021).

\* Location  
LS : Land Side N/A : Not Applicable  
WS : Water Side  
CR : Crown

\*\* Rating  
A : Acceptable N : Not Inspected/Rated  
M : Minimally Acceptable C : Corrected  
U : Unacceptable A/W : Acceptable but Monitor & Maintain

+ Issue Type  
Ma : Maintenance Deficiency  
Ob : Design & System Obsolescence  
En : Enforcement

**Flood Control Project Maintenance  
Levee Inspections**

## Maintenance Issue Types Only, Levee Inspection Report By Mile - Spring 2021

### Brannan Andrus Levee Maintenance District

Waterway	Bank	Unit Miles	Inspection Start/End	Inspector
Unit No. 02 Sacramento River	Left	11.54	04/26/2021 04/26/2021	David Julian

LM Start	8.20	Rating **	U	Issue No.	70
LM End	8.42	Issue Type +	Ma	Location *	WS
Category	Supplemental			GPS Latitude/Longitude	
				Start	End
Item	2017 USACE Erosion Survey			38.151867 °	38.148711 °
				-121.682201 °	-121.682790 °
DWR ID	DWR_NA0002_02_f_2018_70				
Comment Code					
Inspector Comment					
2017 Site ID: SAC 12.1 L					
Status: Critical					
2017 Field Notes: Continues to worsen and threaten the road.					
Site History: 2010 - Small inlet area behind a man-built spit. Bank is slumping and could possibly be fixed with maintenance. 2011 - Site continues to worsen. 2015 - Upgraded to CRITICAL. 2016 - Site continues to get worse.					

Photo 1 of 1 : SP\_2021\_NA0002\_63\_70\_20210226\_00021.jpg



USACE 2013 Photo #1

LM Start	8.32	Rating **	U	Issue No.	158
LM End	8.35	Issue Type +	Ma	Location *	LS
Category	Earthen Levee			GPS Latitude/Longitude	
				Start	End
Item	Encroachments			38.150168 °	38.149698 °
				-121.682159 °	-121.682255 °
DWR ID	DWR_NA0002_02_f_2018_158				
Comment Code					
TR : Tree or limb					
Inspector Comment					
Remove the downed trees from landside slope.					

Photo 1 of 1 : SP\_2021\_NA0002\_63\_158\_20210226\_00056.jpg



View of down tree on landside slope (October 2018).

<b>* Location</b> LS : Land Side    N/A : Not Applicable WS : Water Side CR : Crown	<b>** Rating</b> A : Acceptable M : Minimally Acceptable U : Unacceptable	N : Not Inspected/Rated C : Corrected A/W : Acceptable but Monitor & Maintain	<b>+ Issue Type</b> Ma : Maintenance Deficiency Ob : Design & System Obsolescence En : Enforcement
--	--	---	---

**Flood Control Project Maintenance  
Levee Inspections**

## Maintenance Issue Types Only, Levee Inspection Report By Mile - Spring 2021

### Brannan Andrus Levee Maintenance District

Waterway	Bank	Unit Miles	Inspection Start/End	Inspector
Unit No. 02 Sacramento River	Left	11.54	04/26/2021 04/26/2021	David Julian

LM Start	8.34	Rating **	M	Issue No.	151
LM End	8.37	Issue Type +	Ma	Location *	WS
Category	Earthen Levee			GPS Latitude/Longitude	
				Start	End
Item	Trim / Thin Trees			38.149773 °	38.149383 °
				-121.682335 °	-121.682392 °
DWR ID	DWR_NA0002_02_f_2018_151				
Comment Code					
T2 : Thin trees to allow visibility of the ground and room to flood fight.					
Inspector Comment					

No Photos

LM Start	8.40	Rating **	U	Issue No.	157
LM End	8.40	Issue Type +	Ma	Location *	LS
Category	Earthen Levee			GPS Latitude/Longitude	
				Start	End
Item	Encroachments			38.148959 °	38.148959 °
				-121.682385 °	-121.682385 °
DWR ID	DWR_NA0002_02_f_2019_157				
Comment Code					
TR : Tree or limb					
Inspector Comment					
Remove the downed tree from the landside slope.					

Photo 1 of 1 : SP\_2021\_NA0002\_63\_157\_20210226\_00055.jpg



View of downed tree on landside slope (October 2018).

LM Start	8.66	Rating **	M	Issue No.	110
LM End	8.66	Issue Type +	Ma	Location *	LS
Category	Earthen Levee			GPS Latitude/Longitude	
				Start	End
Item	Encroachments			38.145235 °	38.145235 °
				-121.683133 °	-121.683133 °
DWR ID	DWR_NA0002_02_f_2019_110				
Comment Code					
TR : Tree or limb					
Inspector Comment					

No Photos

<b>* Location</b> LS : Land Side    N/A : Not Applicable WS : Water Side CR : Crown	<b>** Rating</b> A : Acceptable M : Minimally Acceptable U : Unacceptable	N : Not Inspected/Rated C : Corrected A/W : Acceptable but Monitor & Maintain	<b>+ Issue Type</b> Ma : Maintenance Deficiency Ob : Design & System Obsolescence En : Enforcement
--	--	---	---

**Flood Control Project Maintenance  
Levee Inspections**

**Maintenance Issue Types Only, Levee Inspection Report By Mile - Spring 2021**

**Brannan Andrus Levee Maintenance District**

Waterway	Bank	Unit Miles	Inspection Start/End	Inspector
Unit No. 02 Sacramento River	Left	11.54	04/26/2021 04/26/2021	David Julian

LM Start	8.78	Rating **	M	Issue No.	112
LM End	8.87	Issue Type +	Ma	Location *	WS
Category	Earthen Levee			GPS Latitude/Longitude	
				Start	End
Item	Trim / Thin Trees			38.143616 °	38.142375 °
				-121.683677 °	-121.684195 °
DWR ID	DWR_NA0002_02_s_2020_112				
Comment Code					
T2 : Thin trees to allow visibility of the ground and room to flood fight.					
Inspector Comment					

No Photos

LM Start	8.96	Rating **	U	Issue No.	69
LM End	9.31	Issue Type +	Ma	Location *	WS
Category	Supplemental			GPS Latitude/Longitude	
				Start	End
Item	2017 USACE Erosion Survey			38.141399 °	38.136227 °
				-121.685346 °	-121.687361 °
DWR ID	DWR_NA0002_02_f_2018_69				
Comment Code					
Inspector Comment					
2017 Site ID: SAC 11.2 L					
Status: Critical					
2017 Field Notes: New slump section. Erosion under the road has enlarged.					
Site History: 2008 - Erosion causing vertical bank at the highway on top of levee. The whole bank along the highway should be repaired.					
2009 - Minimal new erosion. 2011 - Bank continues to slowly erode.					
2012 - Upgrade to critical, new erosion since lat year and steeper slopes in sections. 2015 - Road foundation and cables exposed.					
Extremely large tree with exposed roots looks likely to fail and take out a significant portion of the levee. 2016 - Site continues to erode.					

Photo 1 of 1 : SP\_2021\_NA0002\_63\_69\_20210226\_00020.jpg



USACE 2013 Photo #1

<b>* Location</b> LS : Land Side    N/A : Not Applicable WS : Water Side CR : Crown	<b>** Rating</b> A : Acceptable M : Minimally Acceptable U : Unacceptable	N : Not Inspected/Rated C : Corrected A/W : Acceptable but Monitor & Maintain	<b>+ Issue Type</b> Ma : Maintenance Deficiency Ob : Design & System Obsolescence En : Enforcement
--	--	---	---

## Brannan Andrus Levee Maintenance District

View of arundo on waterside slope (October 2018).

View looking upstream at vegetation on the landside slope (Fall 2019).

View looking downstream at animal holes on the landside slope (Spring 2019).

Page 28 of 30

**Flood Control Project Maintenance  
Levee Inspections**

**Maintenance Issue Types Only, Levee Inspection Report By Mile - Spring 2021**

**Brannan Andrus Levee Maintenance District**

Waterway	Bank	Unit Miles	Inspection Start/End	Inspector
Unit No. 02 Sacramento River	Left	11.54	04/26/2021 04/26/2021	David Julian

LM Start	9.36	Rating **	U	Issue No.	67 (cont)	
LM End	10.03	Issue Type +	Ma	Location *	LS	
Category	Earthen Levee			GPS Latitude/Longitude		
				Start	End	
Item	Animal Control			38.135593 °	38.126291 °	
				-121.686057 °	-121.688959 °	
DWR ID	DWR_NA0002_02_s_2019_67					

Photo 2 of 2 : SP\_2021\_NA0002\_63\_67\_20210226\_00018.jpg



View looking downstream at animal holes on the landside slope (Spring 2019).

LM Start	9.78	Rating **	M	Issue No.	68
LM End	9.93	Issue Type +	Ma	Location *	WS
Category	Supplemental			GPS Latitude/Longitude	
				Start	End
Item	2017 USACE Erosion Survey			38.129722 °	38.127672 °
				-121.687468 °	-121.688646 °
DWR ID	DWR_NA0002_02 f _ 2019_68				

**Comment Code**

**Inspector Comment**

2017 Site ID: SAC 10.8 L  
 Status: Eroding  
 2017 Field Notes: Lots of new woody debris recruitment.  
 Site History: 2004 - Wave wash pockets approximately 100 ft long with new full bank rock between the pockets. 2005 - Spot repairs, but toe is still eroding in several places. 2006 - Low vertical bank along roadway. 2007 - A PL 84-99 repair was constructed, it cover the majority of the site with the exception of the upstream 150 to 200 ft and the downstream 250 ft, therefore it is being kept in the inventory. 2009 - Minimal new erosion. 2010 - Outboard berm looks good, but the banks are still very steep. 2011 - While the outboard berm is protecting against wave wash, bank still has slumping issues.

Photo 1 of 1 : SP\_2021\_NA0002\_63\_68\_20210226\_00019.jpg



USACE 2013 Photo #1

<b>* Location</b> LS : Land Side    N/A : Not Applicable WS : Water Side CR : Crown		<b>** Rating</b> A : Acceptable                      N : Not Inspected/Rated M : Minimally Acceptable        C : Corrected U : Unacceptable                  A/W : Acceptable but Monitor & Maintain		<b>+ Issue Type</b> Ma : Maintenance Deficiency Ob : Design & System Obsolescence En : Enforcement
--	--	---	--	---

**Flood Control Project Maintenance  
Levee Inspections**

**Maintenance Issue Types Only, Levee Inspection Report By Mile - Spring 2021**

**Brannan Andrus Levee Maintenance District**

Waterway	Bank	Unit Miles	Inspection Start/End	Inspector
Unit No. 02 Sacramento River	Left	11.54	04/26/2021 04/26/2021	David Julian

LM Start	10.74	Rating **	M	Issue No.	119
LM End	10.74	Issue Type +	Ma	Location *	WS
Category	Earthen Levee			GPS Latitude/Longitude	
				Start	End
Item	Erosion / Bank Caving			38.116906 °	38.116906 °
				-121.694595 °	-121.694595 °
DWR ID	DWR_NA0002_02_f _ 2017_119				
Comment Code					
E2 : Schedule repair of erosion site prior to the next inspection.					
Inspector Comment					

Photo 1 of 1 : SP\_2021\_NA0002\_63\_119\_20210226\_00047.jpg



Looking northwest at the waterside slope.

<b>* Location</b> LS : Land Side    N/A : Not Applicable WS : Water Side CR : Crown	<b>** Rating</b> A : Acceptable M : Minimally Acceptable U : Unacceptable	N : Not Inspected/Rated C : Corrected A/W : Acceptable but Monitor & Maintain	<b>+ Issue Type</b> Ma : Maintenance Deficiency Ob : Design & System Obsolescence En : Enforcement
--	--	---	---