

**Flood Control Project Maintenance  
Levee Inspections**

## Maintenance Issue Types Only, Levee Inspection Report By Mile - Spring 2019

### Brannan Andrus Levee Maintenance District

Waterway	Bank	Unit Miles	Inspection Start/End	Inspector
Unit No. 01 Georgiana Slough	Right	6.01	04/23/2019 04/23/2019	David Julian

LM Start		Rating **	A	Issue No.	27
LM End		Issue Type +	Ma	Location *	N/A
Category	Earthen Levee		GPS Latitude/Longitude		
			Start	End	
Item	Flood Preparedness & Training				
DWR ID	DWR_NA0002_01_s _ 2012_27				
Comment Code					
Inspector Comment					
LMA is prepared to respond to a flood emergency.					

No Photos

LM Start		Rating **	A	Issue No.	32
LM End		Issue Type +	Ma	Location *	N/A
Category	Earthen Levee		GPS Latitude/Longitude		
			Start	End	
Item	Operations & Maintenance Manuals				
DWR ID	DWR_NA0002_01_s _ 2013_32				
Comment Code					
Inspector Comment					
The LMA maintains a copy of the O&M manual on file at district office.					

No Photos

LM Start		Rating **	A	Issue No.	33
LM End		Issue Type +	Ma	Location *	N/A
Category	Earthen Levee		GPS Latitude/Longitude		
			Start	End	
Item	Emergency Supplies & Equipment				
DWR ID	DWR_NA0002_01_s _ 2013_33				
Comment Code					
Inspector Comment					
LMA maintains an adequate amount of flood fight supplies and equipment for flood response.					

No Photos

<b>* Location</b> LS : Land Side    N/A : Not Applicable WS : Water Side CR : Crown	<b>** Rating</b> A : Acceptable M : Minimally Acceptable U : Unacceptable	N : Not Inspected/Rated C : Corrected A/W : Acceptable but Monitor & Maintain	<b>+ Issue Type</b> Ma : Maintenance Deficiency Ob : Design & System Obsolescence En : Enforcement
--	--	---	---

**Flood Control Project Maintenance  
Levee Inspections**

## Maintenance Issue Types Only, Levee Inspection Report By Mile - Spring 2019

### Brannan Andrus Levee Maintenance District

Waterway	Bank	Unit Miles	Inspection Start/End	Inspector
Unit No. 01 Georgiana Slough	Right	6.01	04/23/2019 04/23/2019	David Julian

LM Start	0.02	Rating **	M	Issue No.	37
LM End	2.25	Issue Type +	Ma	Location *	LS
Category	Earthen Levee			GPS Latitude/Longitude	
				Start	End
Item	Vegetation			38.186351 °	38.163473 °
				-121.562967 °	-121.584398 °
DWR ID	DWR_NA0002_01_s_2019_37				
Comment Code					
V1 : Control annual grass and weeds on the levee slopes and easements.					
Inspector Comment					
Maintain annual vegetation					

Photo 1 of 1 : SP\_2019\_NA0002\_62\_37\_20190423\_00096.jpg



View looking downstream at annual vegetation on the landside slope (Spring 2019).

LM Start	0.02	Rating **	M	Issue No.	35
LM End	2.25	Issue Type +	Ma	Location *	WS
Category	Earthen Levee			GPS Latitude/Longitude	
				Start	End
Item	Vegetation			38.186351 °	38.163473 °
				-121.562968 °	-121.584397 °
DWR ID	DWR_NA0002_01_s_2019_35				
Comment Code					
V1 : Control annual grass and weeds on the levee slopes and easements.					
Inspector Comment					
Maintain annual vegetation					

Photo 1 of 1 : SP\_2019\_NA0002\_62\_35\_20190423\_00095.jpg



View looking downstream at annual vegetation on the waterside slope (Spring 2019).

LM Start	0.36	Rating **	C	Issue No.	40
LM End	0.36	Issue Type +	Ma	Location *	LS
Category	Earthen Levee			GPS Latitude/Longitude	
				Start	End
Item	Vegetation			38.183878 °	38.183878 °
				-121.568290 °	-121.568290 °
DWR ID	DWR_NA0002_01_f_2018_40				
Comment Code					
V2 : Remove the wild growth other than native grasses from the levee slopes.					
Inspector Comment					

No Photos

* Location		** Rating		+ Issue Type	
LS : Land Side	N/A : Not Applicable	A : Acceptable	N : Not Inspected/Rated	Ma : Maintenance Deficiency	
WS : Water Side		M : Minimally Acceptable	C : Corrected	Ob : Design & System Obsolescence	
CR : Crown		U : Unacceptable	A/W : Acceptable but Monitor & Maintain	En : Enforcement	

**Flood Control Project Maintenance  
Levee Inspections**

## Maintenance Issue Types Only, Levee Inspection Report By Mile - Spring 2019

### Brannan Andrus Levee Maintenance District

Waterway	Bank	Unit Miles	Inspection Start/End	Inspector
Unit No. 01 Georgiana Slough	Right	6.01	04/23/2019 04/23/2019	David Julian

LM Start	0.50	Rating **	M	Issue No.	41
LM End	0.57	Issue Type +	Ma	Location *	LS
Category	Earthen Levee			GPS Latitude/Longitude	
				Start	End
Item	Vegetation			38.182700 °	38.182258 °
				-121.570470 °	-121.571647 °
DWR ID	DWR_NA0002_01_f_2018_41				
Comment Code					
V2 : Remove the wild growth other than native grasses from the levee slopes.					
Inspector Comment					
Remove blackberries before they get established.					

Photo 1 of 1 : SP\_2019\_NA0002\_62\_41\_20190311\_00024.jpg



View looking slightly downstream of newly established black berries (October 2018).

LM Start	1.41	Rating **	M	Issue No.	62
LM End	1.50	Issue Type +	Ma	Location *	LS
Category	Earthen Levee			GPS Latitude/Longitude	
				Start	End
Item	Vegetation			38.174986 °	38.173809 °
				-121.581174 °	-121.580871 °
DWR ID	DWR_NA0002_01_s_2019_62				
Comment Code					
V2 : Remove the wild growth other than native grasses from the levee slopes.					
Inspector Comment					
Remove blackberries before they get established					

No Photos

LM Start	1.53	Rating **	M	Issue No.	39
LM End	1.54	Issue Type +	Ma	Location *	WS
Category	Supplemental			GPS Latitude/Longitude	
				Start	End
Item	2017 USACE Erosion Survey, DRAFT			38.173410 °	38.173178 °
				-121.580683 °	-121.580622 °
DWR ID	DWR_NA0002_01_f_2018_39				
Comment Code					
Inspector Comment					
2017 Site ID: GEO 5.5 R					
Status: Eroding New					
2017 Field Notes: Failed rock section, slump failure of bank to subvertical face.					
Site History:					

Photo 1 of 1 : SP\_2019\_NA0002\_62\_39\_20190311\_00023.jpg



Erosion slump in area of previous repair. LM 1.52

* Location		** Rating		+ Issue Type	
LS : Land Side	N/A : Not Applicable	A : Acceptable	N : Not Inspected/Rated	Ma : Maintenance Deficiency	
WS : Water Side		M : Minimally Acceptable	C : Corrected	Ob : Design & System Obsolescence	
CR : Crown		U : Unacceptable	A/W : Acceptable but Monitor & Maintain	En : Enforcement	

**Flood Control Project Maintenance  
Levee Inspections**

## Maintenance Issue Types Only, Levee Inspection Report By Mile - Spring 2019

### Brannan Andrus Levee Maintenance District

Waterway	Bank	Unit Miles	Inspection Start/End	Inspector
Unit No. 01 Georgiana Slough	Right	6.01	04/23/2019 04/23/2019	David Julian

LM Start	1.56	Rating **	U	Issue No.	25
LM End	1.56	Issue Type +	Ma	Location *	LS
Category	Earthen Levee			GPS Latitude/Longitude	
				Start	End
Item	Trim / Thin Trees			38.172869 °	38.172869 °
				-121.580681 °	-121.580681 °
DWR ID	DWR_NA0002_01_s _ 2012_25				
Comment Code					
T1 : Trim trees to at least five feet above ground level.					
Inspector Comment					
Tree blocking landside toe.					

Photo 1 of 1 : SP\_2019\_NA0002\_62\_25\_20190311\_00016.jpg



Looking southwest at the landside slope.

LM Start	1.63	Rating **	M	Issue No.	63
LM End	1.63	Issue Type +	Ma	Location *	LS
Category	Earthen Levee			GPS Latitude/Longitude	
				Start	End
Item	Vegetation			38.171867 °	38.171867 °
				-121.580681 °	-121.580681 °
DWR ID	DWR_NA0002_01_s _ 2019_63				
Comment Code					
V2 : Remove the wild growth other than native grasses from the levee slopes.					
Inspector Comment					
Remove blackberries at landside toe before they get established					

No Photos

LM Start	2.19	Rating **	U	Issue No.	42
LM End	2.23	Issue Type +	Ma	Location *	LS
Category	Earthen Levee			GPS Latitude/Longitude	
				Start	End
Item	Vegetation			38.164292 °	38.163777 °
				-121.584028 °	-121.584246 °
DWR ID	DWR_NA0002_01_s _ 2019_42				
Comment Code					
V2 : Remove the wild growth other than native grasses from the levee slopes.					
Inspector Comment					
Remove wildgrowth all the way down the landside slope					

Photo 1 of 1 : SP\_2019\_NA0002\_62\_42\_20190423\_00099.jpg



View looking downstream at vegetation on the landside slope (Spring 2019).

<b>* Location</b> LS : Land Side    N/A : Not Applicable WS : Water Side CR : Crown		<b>** Rating</b> A : Acceptable M : Minimally Acceptable U : Unacceptable		<b>+ Issue Type</b> Ma : Maintenance Deficiency Ob : Design & System Obsolescence En : Enforcement	
		N : Not Inspected/Rated C : Corrected A/W : Acceptable but Monitor & Maintain			



**Flood Control Project Maintenance  
Levee Inspections**

## Maintenance Issue Types Only, Levee Inspection Report By Mile - Spring 2019

### Brannan Andrus Levee Maintenance District

Waterway	Bank	Unit Miles	Inspection Start/End	Inspector
Unit No. 01 Georgiana Slough	Right	6.01	04/23/2019 04/23/2019	David Julian

LM Start	2.34	Rating **	M	Issue No.	72
LM End	2.34	Issue Type +	Ma	Location *	LS
Category	Earthen Levee			GPS Latitude/Longitude	
				Start	End
Item	Trim / Thin Trees			38.162242 °	38.162242 °
				-121.585058 °	-121.585058 °
DWR ID	DWR_NA0002_01_f_2016_72				
Comment Code					
T1 : Trim trees to at least five feet above ground level.					
Inspector Comment					

No Photos

LM Start	2.36	Rating **	M	Issue No.	7
LM End	2.36	Issue Type +	Ma	Location *	LS
Category	Earthen Levee			GPS Latitude/Longitude	
				Start	End
Item	Animal Control			38.162004 °	38.162004 °
				-121.585229 °	-121.585229 °
DWR ID	DWR_NA0002_01_s_2012_7				
Comment Code					
A3 : No rodents visible, but rodent burrows visible; need to backfill and compact or grout burrows.					
Inspector Comment					
Rodent colony exists under raised Tyler Island Bridge approach. Rodents should be exterminated and their holes backfilled.					

No Photos

LM Start	2.41	Rating **	U	Issue No.	28
LM End	2.49	Issue Type +	Ma	Location *	LS
Category	Earthen Levee			GPS Latitude/Longitude	
				Start	End
Item	Vegetation			38.161301 °	38.160281 °
				-121.585560 °	-121.586007 °
DWR ID	DWR_NA0002_01_s_2013_28				
Comment Code					
V2 : Remove the wild growth other than native grasses from the levee slopes.					
Inspector Comment					
Dense vegetation and wild roses on landside slope and toe.					

Photo 1 of 2 : SP\_2019\_NA0002\_62\_28\_20190311\_00017.jpg



Look west at dense vegetation at landward toe. (Spring 2016)

* Location		** Rating		+ Issue Type	
LS : Land Side	N/A : Not Applicable	A : Acceptable	N : Not Inspected/Rated	Ma : Maintenance Deficiency	
WS : Water Side		M : Minimally Acceptable	C : Corrected	Ob : Design & System Obsolescence	
CR : Crown		U : Unacceptable	A/W : Acceptable but Monitor & Maintain	En : Enforcement	

**Flood Control Project Maintenance  
Levee Inspections**

## Maintenance Issue Types Only, Levee Inspection Report By Mile - Spring 2019

### Brannan Andrus Levee Maintenance District

Waterway	Bank	Unit Miles	Inspection Start/End	Inspector
Unit No. 01 Georgiana Slough	Right	6.01	04/23/2019 04/23/2019	David Julian

LM Start	2.41	Rating **	U	Issue No.	28 (cont)	
LM End	2.49	Issue Type +	Ma	Location *	LS	
Category	Earthen Levee			GPS Latitude/Longitude		
				Start		End
Item	Vegetation			38.161301 °		38.160281 °
				-121.585560 °		-121.586007 °
DWR ID	DWR_NA0002_01_s_2013_28					
Comment Code						
V2 : Remove the wild growth other than native grasses from the levee slopes.						
Inspector Comment						
Dense vegetation and wild roses on landside slope and toe.						

Photo 2 of 2 : SP\_2019\_NA0002\_62\_28\_20190311\_00018.jpg



Look west at dense vegetation at landward toe. (Fall 2016)

LM Start	2.58	Rating **	M	Issue No.	52
LM End	2.58	Issue Type +	Ma	Location *	LS
Category	Earthen Levee			GPS Latitude/Longitude	
				Start	End
Item	Trim / Thin Trees			38.158999 °	38.158999 °
				-121.586621 °	-121.586621 °
DWR ID	DWR_NA0002_01_f_2017_29				
Comment Code					
T1 : Trim trees to at least five feet above ground level.					
Inspector Comment					

No Photos

LM Start	2.60	Rating **	M	Issue No.	44
LM End	2.60	Issue Type +	Ma	Location *	CR
Category	Earthen Levee			GPS Latitude/Longitude	
				Start	End
Item	Crown Surface / Depressions / Rutting			38.158684 °	38.158684 °
				-121.586787 °	-121.586787 °
DWR ID	DWR_NA0002_01_f_2017_44				
Comment Code					
C3 : Add appropriate gravel or road base. Grade and compact.					
Inspector Comment					
Pothole in crown at pipe crossing					

No Photos

* Location		** Rating		+ Issue Type	
LS : Land Side	N/A : Not Applicable	A : Acceptable	N : Not Inspected/Rated	Ma : Maintenance Deficiency	
WS : Water Side		M : Minimally Acceptable	C : Corrected	Ob : Design & System Obsolescence	
CR : Crown		U : Unacceptable	A/W : Acceptable but Monitor & Maintain	En : Enforcement	

**Flood Control Project Maintenance  
Levee Inspections**

## Maintenance Issue Types Only, Levee Inspection Report By Mile - Spring 2019

### Brannan Andrus Levee Maintenance District

Waterway	Bank	Unit Miles	Inspection Start/End	Inspector
Unit No. 01 Georgiana Slough	Right	6.01	04/23/2019 04/23/2019	David Julian

LM Start	2.76	Rating **	C	Issue No.	71
LM End	2.79	Issue Type +	Ma	Location *	LS
Category	Earthen Levee			GPS Latitude/Longitude	
				Start	End
Item	Vegetation			38.157860 °	38.157925 °
				-121.588920 °	-121.589473 °
DWR ID	DWR_NA0002_01_f_2016_71				
Comment Code					
V2 : Remove the wild growth other than native grasses from the levee slopes.					
Inspector Comment					
Remove black berries before they get established					

No Photos

LM Start	2.81	Rating **	C	Issue No.	49
LM End	2.90	Issue Type +	Ma	Location *	WS
Category	Earthen Levee			GPS Latitude/Longitude	
				Start	End
Item	Vegetation			38.157952 °	38.157728 °
				-121.589833 °	-121.591442 °
DWR ID	DWR_NA0002_01_f_2018_49				
Comment Code					
V1 : Control annual grass and weeds on the levee slopes and easements.					
Inspector Comment					

No Photos

LM Start	3.00	Rating **	U	Issue No.	53
LM End	3.00	Issue Type +	Ma	Location *	LS
Category	Earthen Levee			GPS Latitude/Longitude	
				Start	End
Item	Vegetation			38.156537 °	38.156537 °
				-121.592498 °	-121.592498 °
DWR ID	DWR_NA0002_01_f_2018_53				
Comment Code					
V2 : Remove the wild growth other than native grasses from the levee slopes.					
Inspector Comment					
Remove willows from landside slope					

Photo 1 of 1 : SP\_2019\_NA0002\_62\_53\_20190423\_00100.jpg



View looking downstream at willows on the landside slope (Spring 2019).

<b>* Location</b> LS : Land Side    N/A : Not Applicable WS : Water Side CR : Crown		<b>** Rating</b> A : Acceptable M : Minimally Acceptable U : Unacceptable		<b>+ Issue Type</b> Ma : Maintenance Deficiency Ob : Design & System Obsolescence En : Enforcement	
		N : Not Inspected/Rated C : Corrected A/W : Acceptable but Monitor & Maintain			

**Flood Control Project Maintenance  
Levee Inspections**

## Maintenance Issue Types Only, Levee Inspection Report By Mile - Spring 2019

### Brannan Andrus Levee Maintenance District

Waterway	Bank	Unit Miles	Inspection Start/End	Inspector
Unit No. 01 Georgiana Slough	Right	6.01	04/23/2019 04/23/2019	David Julian

LM Start	3.38	Rating **	A/W	Issue No.	67
LM End	3.40	Issue Type +	Ma	Location *	CR
Category	Earthen Levee			GPS Latitude/Longitude	
				Start	End
Item	Slope Stability			38.151430 °	38.151390 °
				-121.592085 °	-121.592517 °
DWR ID	DWR_NA0002_01_s_2017_67				
Comment Code					
S1 : Repair slope instability.					
Inspector Comment					
Appears to be beginning of a landside slump. LMA's Engineer (DCC) is monitoring site for movement.					

Photo 1 of 3 : SP\_2019\_NA0002\_62\_67\_20190311\_00042.jpg



Looking south at sloughing on landward shoulder.

LM Start	<b>3.38</b>	Rating **	A/W	Issue No.	<b>67 (cont)</b>
LM End	<b>3.40</b>	Issue Type +	Ma	Location *	CR

Photo 2 of 3 : SP\_2019\_NA0002\_62\_67\_20190311\_00043.jpg



Looking east at possible sloughing on landward shoulder.

LM Start	<b>3.38</b>	Rating **	A/W	Issue No.	<b>67 (cont)</b>
LM End	<b>3.40</b>	Issue Type +	Ma	Location *	CR

Photo 3 of 3 : SP\_2019\_NA0002\_62\_67\_20190311\_00044.jpg



Looking at downstream corner of slough.

* Location LS : Land Side    N/A : Not Applicable WS : Water Side CR : Crown		** Rating A : Acceptable M : Minimally Acceptable U : Unacceptable N : Not Inspected/Rated C : Corrected A/W : Acceptable but Monitor & Maintain		+ Issue Type Ma : Maintenance Deficiency Ob : Design & System Obsolescence En : Enforcement	
---	--	--	--	--	--



**Flood Control Project Maintenance  
Levee Inspections**

## Maintenance Issue Types Only, Levee Inspection Report By Mile - Spring 2019

### Brannan Andrus Levee Maintenance District

Waterway	Bank	Unit Miles	Inspection Start/End	Inspector
Unit No. 01 Georgiana Slough	Right	6.01	04/23/2019 04/23/2019	David Julian

LM Start	3.43	Rating **	U	Issue No.	59
LM End	3.95	Issue Type +	Ma	Location *	WS
Category	Earthen Levee			GPS Latitude/Longitude	
				Start	End
Item	Vegetation			38.151448 °	38.145753 °
				-121.592898 °	-121.601660 °
DWR ID	DWR_NA0002_01_f_2018_59				
Comment Code					
V2 : Remove the wild growth other than native grasses from the levee slopes.					
Inspector Comment					

Photo 1 of 1 : SP\_2019\_NA0002\_62\_59\_20190311\_00036.jpg



View looking downstream at vegetation on the water side slope (October 2018).

LM Start	3.62	Rating **	C	Issue No.	9
LM End	3.62	Issue Type +	Ma	Location *	LS
Category	Earthen Levee			GPS Latitude/Longitude	
				Start	End
Item	Trim / Thin Trees			38.151744 °	38.151744 °
				-121.596425 °	-121.596425 °
DWR ID	DWR_NA0002_01_s_2012_9				
Comment Code					
T1 : Trim trees to at least five feet above ground level.					
Inspector Comment					

No Photos

LM Start	3.63	Rating **	M	Issue No.	45
LM End	3.63	Issue Type +	Ma	Location *	LS
Category	Earthen Levee			GPS Latitude/Longitude	
				Start	End
Item	Vegetation			38.151715 °	38.151715 °
				-121.596518 °	-121.596518 °
DWR ID	DWR_NA0002_01_s_2019_45				
Comment Code					
V2 : Remove the wild growth other than native grasses from the levee slopes.					
Inspector Comment					
Remove blackberries from landside slope					

No Photos

* Location		** Rating		+ Issue Type	
LS : Land Side	N/A : Not Applicable	A : Acceptable	N : Not Inspected/Rated	Ma : Maintenance Deficiency	
WS : Water Side		M : Minimally Acceptable	C : Corrected	Ob : Design & System Obsolescence	
CR : Crown		U : Unacceptable	A/W : Acceptable but Monitor & Maintain	En : Enforcement	

**Flood Control Project Maintenance  
Levee Inspections**

## Maintenance Issue Types Only, Levee Inspection Report By Mile - Spring 2019

### Brannan Andrus Levee Maintenance District

Waterway	Bank	Unit Miles	Inspection Start/End	Inspector
Unit No. 01 Georgiana Slough	Right	6.01	04/23/2019 04/23/2019	David Julian

LM Start	3.74	Rating **	M	Issue No.	46
LM End	3.74	Issue Type +	Ma	Location *	LS
Category	Earthen Levee			GPS Latitude/Longitude	
				Start	End
Item	Trim / Thin Trees			38.150841 °	38.150841 °
				-121.598161 °	-121.598161 °
DWR ID	DWR_NA0002_01_f_2017_46				
Comment Code					
T1 : Trim trees to at least five feet above ground level.					
Inspector Comment					

Photo 1 of 1 : SP\_2019\_NA0002\_62\_46\_20190311\_00028.jpg



Looking southwest at the landside slope.

LM Start	3.87	Rating **	U	Issue No.	57
LM End	3.87	Issue Type +	Ma	Location *	WS
Category	Earthen Levee			GPS Latitude/Longitude	
				Start	End
Item	Trim / Thin Trees			38.149217 °	38.149217 °
				-121.599389 °	-121.599389 °
DWR ID	DWR_NA0002_01_f_2015_57				
Comment Code					
T1 : Trim trees to at least five feet above ground level.					
Inspector Comment					

Photo 1 of 1 : SP\_2019\_NA0002\_62\_57\_20190311\_00034.jpg



Looking west at untrimmed tree on waterward slope.

<b>* Location</b> LS : Land Side    N/A : Not Applicable WS : Water Side CR : Crown	<b>** Rating</b> A : Acceptable M : Minimally Acceptable U : Unacceptable	N : Not Inspected/Rated C : Corrected A/W : Acceptable but Monitor & Maintain	<b>+ Issue Type</b> Ma : Maintenance Deficiency Ob : Design & System Obsolescence En : Enforcement
--	--	---	---

**Flood Control Project Maintenance  
Levee Inspections**

## Maintenance Issue Types Only, Levee Inspection Report By Mile - Spring 2019

### Brannan Andrus Levee Maintenance District

Waterway	Bank	Unit Miles	Inspection Start/End	Inspector
Unit No. 01 Georgiana Slough	Right	6.01	04/23/2019 04/23/2019	David Julian

LM Start	3.99	Rating **	A/W	Issue No.	101	
LM End	3.99	Issue Type +	Ma	Location *		
Category	Supplemental			GPS Latitude/Longitude		
				Start		End
Item	DWR UCIP LMA Responsibility			38.147677 °		38.147677 °
				-121.600501 °		-121.600501 °
DWR ID	21772					
Comment Code						
Inspector Comment						
FS_ID:51302 DS_ID:21772 EP_NO: 11248 Repair Type: No Action Needed Crossing Status: Found UCIP Comments: FIELD_STRUCT_DESC: 1 of 2: 24-inch steel drainage pipe through levee, 3 feet below the crown. Siphon breaker is located on the waterside (WS) slope. Pump is located on the landside (LS). (24-inch pipe [HLM 3.99] authorized under Automatic Board Order (ABO) issued as Permit No. 11248, 1975 – Reclamation District No. 407) [Additional Reference(s): DWR Levee Log, 2005. USACE Sacramento O&M Manual Unit 103, June 1954, Drawing No. 50-4-2631, page 2631/2, (Station 107+76), 26-inch listed]. FS Date: 5/16/2013						

LM Start	<b>3.99</b>	Rating **	A/W	Issue No.	<b>101 (cont)</b>
LM End	<b>3.99</b>	Issue Type +	Ma	Location *	

Photo 1 of 3 : UCIP\_SP\_2019\_51302\_22082.jpg



24-inch pipe and siphon breaker visible on WS slope.

Photo 2 of 3 : UCIP\_SP\_2019\_51302\_22081.jpg



Pipe visible on LS slope.

<b>* Location</b> LS : Land Side    N/A : Not Applicable WS : Water Side CR : Crown	<b>** Rating</b> A : Acceptable M : Minimally Acceptable U : Unacceptable	N : Not Inspected/Rated C : Corrected A/W : Acceptable but Monitor & Maintain	<b>+ Issue Type</b> Ma : Maintenance Deficiency Ob : Design & System Obsolescence En : Enforcement
--	--	---	---

**Flood Control Project Maintenance  
Levee Inspections**

**Maintenance Issue Types Only, Levee Inspection Report By Mile - Spring 2019**

**Brannan Andrus Levee Maintenance District**

Waterway	Bank	Unit Miles	Inspection Start/End	Inspector
Unit No. 01 Georgiana Slough	Right	6.01	04/23/2019 04/23/2019	David Julian

LM Start	3.99	Rating **	A/W	Issue No.	101 (cont)	
LM End	3.99	Issue Type +	Ma	Location *		
Category	Supplemental			GPS Latitude/Longitude		
				Start	End	
Item	DWR UCIP LMA Responsibility			38.147677 °	38.147677 °	
				-121.600501 °	-121.600501 °	
DWR ID	21772					
Comment Code						
Inspector Comment						
FS_ID:51302 DS_ID:21772 EP_NO: 11248 Repair Type: No Action Needed Crossing Status: Found UCIP Comments: FIELD_STRUCT_DESC: 1 of 2: 24-inch steel drainage pipe through levee, 3 feet below the crown. Siphon breaker is located on the waterside (WS) slope. Pump is located on the landside (LS). (24-inch pipe [HLM 3.99] authorized under Automatic Board Order (ABO) issued as Permit No. 11248, 1975 – Reclamation District No. 407) [Additional Reference(s): DWR Levee Log, 2005. USACE Sacramento O&M Manual Unit 103, June 1954, Drawing No. 50-4-2631, page 2631/2, (Station 107+76), 26-inch listed]. FS Date: 5/16/2013						

Photo 3 of 3 : UCIP\_SP\_2019\_51302\_22080.jpg



Pumping plant on LS toe.

LM Start	4.03	Rating **	U	Issue No.	43
LM End	4.29	Issue Type +	Ma	Location *	LS
Category	Earthen Levee			GPS Latitude/Longitude	
				Start	End
Item	Vegetation			38.147108 °	38.143694 °
				-121.600942 °	-121.600876 °
DWR ID	DWR_NA0002_01_s_2019_43				
Comment Code					
V1 : Control annual grass and weeds on the levee slopes and easements.					
Inspector Comment					

Photo 1 of 1 : SP\_2019\_NA0002\_62\_43\_20190523\_00112.jpg



View looking downstream at annual vegetation on the landside slope (Spring 2019).

<b>* Location</b> LS : Land Side    N/A : Not Applicable WS : Water Side CR : Crown		<b>** Rating</b> A : Acceptable M : Minimally Acceptable U : Unacceptable N : Not Inspected/Rated C : Corrected A/W : Acceptable but Monitor & Maintain		<b>+ Issue Type</b> Ma : Maintenance Deficiency Ob : Design & System Obsolescence En : Enforcement
--	--	---	--	---



**Flood Control Project Maintenance  
Levee Inspections**

## Maintenance Issue Types Only, Levee Inspection Report By Mile - Spring 2019

### Brannan Andrus Levee Maintenance District

Waterway	Bank	Unit Miles	Inspection Start/End	Inspector
Unit No. 01 Georgiana Slough	Right	6.01	04/23/2019 04/23/2019	David Julian

LM Start	4.05	Rating **	U	Issue No.	64
LM End	4.13	Issue Type +	Ma	Location *	WS
Category	Earthen Levee			GPS Latitude/Longitude	
				Start	End
Item	Vegetation			38.146956 °	38.145776 °
				-121.601033 °	-121.601633 °
DWR ID	DWR_NA0002_01_s_2019_64				
Comment Code					
V1 : Control annual grass and weeds on the levee slopes and easements.					
Inspector Comment					

Photo 1 of 1 : SP\_2019\_NA0002\_62\_64\_20190523\_00113.jpg



View looking downstream at annual vegetation on the waterside slope (Spring 2019).

LM Start	4.12	Rating **	M	Issue No.	68
LM End	4.12	Issue Type +	Ma	Location *	WS
Category	Earthen Levee			GPS Latitude/Longitude	
				Start	End
Item	Vegetation			38.145998 °	38.145998 °
				-121.601588 °	-121.601588 °
DWR ID	DWR_NA0002_01_s_2019_68				
Comment Code					
V2 : Remove the wild growth other than native grasses from the levee slopes.					
Inspector Comment					
Remove new willow growth from waterside slope					

Photo 1 of 1 : SP\_2019\_NA0002\_62\_68\_20190423\_00103.jpg



View looking downstream at new willows growing on the waterside slope (Spring 2019).

LM Start	4.22	Rating **	M	Issue No.	83
LM End	4.22	Issue Type +	Ma	Location *	WS
Category	Earthen Levee			GPS Latitude/Longitude	
				Start	End
Item	Vegetation			38.144506 °	38.144506 °
				-121.601365 °	-121.601365 °
DWR ID	DWR_NA0002_01_s_2019_83				
Comment Code					
V2 : Remove the wild growth other than native grasses from the levee slopes.					
Inspector Comment					
Remove blackberries on waterside slope before they get established					

No Photos

* Location		** Rating		+ Issue Type	
LS : Land Side	N/A : Not Applicable	A : Acceptable	N : Not Inspected/Rated	Ma : Maintenance Deficiency	
WS : Water Side		M : Minimally Acceptable	C : Corrected	Ob : Design & System Obsolescence	
CR : Crown		U : Unacceptable	A/W : Acceptable but Monitor & Maintain	En : Enforcement	

**Flood Control Project Maintenance  
Levee Inspections**

## Maintenance Issue Types Only, Levee Inspection Report By Mile - Spring 2019

### Brannan Andrus Levee Maintenance District

Waterway	Bank	Unit Miles	Inspection Start/End	Inspector
Unit No. 01 Georgiana Slough	Right	6.01	04/23/2019 04/23/2019	David Julian

LM Start	4.55	Rating **	U	Issue No.	69
LM End	4.55	Issue Type +	Ma	Location *	LS
Category	Earthen Levee			GPS Latitude/Longitude	
				Start	End
Item	Vegetation			38.140402 °	38.140402 °
				-121.598276 °	-121.598276 °
DWR ID	DWR_NA0002_01_s_2019_69				
Comment Code					
V1 : Control annual grass and weeds on the levee slopes and easements.					
Inspector Comment					

Photo 1 of 1 : SP\_2019\_NA0002\_62\_69\_20190423\_00105.jpg



View looking downstream at annual vegetation on the landside slope (Spring 2019).

LM Start	4.55	Rating **	U	Issue No.	85
LM End	4.55	Issue Type +	Ma	Location *	LS
Category	Earthen Levee			GPS Latitude/Longitude	
				Start	End
Item	Vegetation			38.140402 °	38.140402 °
				-121.598275 °	-121.598275 °
DWR ID	DWR_NA0002_01_s_2019_85				
Comment Code					
V2 : Remove the wild growth other than native grasses from the levee slopes.					
Inspector Comment					
Remove blackberries from landside toe					

Photo 1 of 1 : SP\_2019\_NA0002\_62\_85\_20190423\_00106.jpg



View looking downslope at blackberries at the landside slope (Spring 2019).

<b>* Location</b> LS : Land Side    N/A : Not Applicable WS : Water Side CR : Crown		<b>** Rating</b> A : Acceptable M : Minimally Acceptable U : Unacceptable		N : Not Inspected/Rated C : Corrected A/W : Acceptable but Monitor & Maintain		<b>+ Issue Type</b> Ma : Maintenance Deficiency Ob : Design & System Obsolescence En : Enforcement	
--	--	--	--	---	--	---	--

**Flood Control Project Maintenance  
Levee Inspections**

## Maintenance Issue Types Only, Levee Inspection Report By Mile - Spring 2019

### Brannan Andrus Levee Maintenance District

Waterway	Bank	Unit Miles	Inspection Start/End	Inspector
Unit No. 01 Georgiana Slough	Right	6.01	04/23/2019 04/23/2019	David Julian

LM Start	4.83	Rating **	U	Issue No.	86
LM End	4.95	Issue Type +	Ma	Location *	LS
Category	Earthen Levee			GPS Latitude/Longitude	
				Start	End
Item	Vegetation			38.136882 °	38.135516 °
				-121.596015 °	-121.594597 °
DWR ID	DWR_NA0002_01_s_2019_86				
Comment Code					
V1 : Control annual grass and weeds on the levee slopes and easements.					
Inspector Comment					
Maintain annual vegetation					

Photo 1 of 1 : SP\_2019\_NA0002\_62\_86\_20190423\_00108.jpg



View looking downstream at annual vegetation on the landside slope (Spring 2019).

LM Start	4.83	Rating **	U	Issue No.	87	
LM End	4.95	Issue Type +	Ma	Location *	WS	
Category	Earthen Levee			GPS Latitude/Longitude		
				Start		End
Item	Vegetation			38.136882 °		38.135516 °
				-121.596015 °		-121.594597 °
DWR ID	DWR_NA0002_01_s_2019_87					
Comment Code						
V1 : Control annual grass and weeds on the levee slopes and easements.						
Inspector Comment						
Maintain annual vegetation						

Photo 1 of 1 : SP\_2019\_NA0002\_62\_87\_20190423\_00107.jpg



View looking downstream at annual vegetation on the waterside slope (Spring 2019).

LM Start	4.99	Rating **	M	Issue No.	79
LM End	4.99	Issue Type +	Ma	Location *	CR
Category	Earthen Levee			GPS Latitude/Longitude	
				Start	End
Item	Trim / Thin Trees			38.135088 °	38.135088 °
				-121.594163 °	-121.594163 °
DWR ID	DWR_NA0002_01_f_2018_79				
Comment Code					
T1 : Trim trees to at least five feet above ground level.					
Inspector Comment					

No Photos

* Location		** Rating		+ Issue Type	
LS : Land Side	N/A : Not Applicable	A : Acceptable	N : Not Inspected/Rated	Ma : Maintenance Deficiency	
WS : Water Side		M : Minimally Acceptable	C : Corrected	Ob : Design & System Obsolescence	
CR : Crown		U : Unacceptable	A/W : Acceptable but Monitor & Maintain	En : Enforcement	



**Flood Control Project Maintenance  
Levee Inspections**

## Maintenance Issue Types Only, Levee Inspection Report By Mile - Spring 2019

### Brannan Andrus Levee Maintenance District

Waterway	Bank	Unit Miles	Inspection Start/End	Inspector
Unit No. 01 Georgiana Slough	Right	6.01	04/23/2019 04/23/2019	David Julian

LM Start	5.05	Rating **	M	Issue No.	80
LM End	5.05	Issue Type +	Ma	Location *	WS
Category	Earthen Levee			GPS Latitude/Longitude	
				Start	End
Item	Encroachments			38.134380 °	38.134380 °
				-121.593338 °	-121.593338 °
DWR ID	DWR_NA0002_01_f_2018_80				
Comment Code					
PR : Prunings					
Inspector Comment					
Remove prunings					

Photo 1 of 1 : SP\_2019\_NA0002\_62\_80\_20190311\_00048.jpg



View of prunings on the water side slope (October 2018).

LM Start	5.26	Rating **	U	Issue No.	88
LM End	5.83	Issue Type +	Ma	Location *	WS
Category	Earthen Levee			GPS Latitude/Longitude	
				Start	End
Item	Vegetation			38.132089 °	38.129641 °
				-121.590747 °	-121.581769 °
DWR ID	DWR_NA0002_01_s_2019_88				
Comment Code					
V1 : Control annual grass and weeds on the levee slopes and easements.					
Inspector Comment					

Photo 1 of 1 : SP\_2019\_NA0002\_62\_88\_20190423\_00109.jpg



View looking downstream at annual vegetation on the waterside slope (Spring 2019).

<b>* Location</b> LS : Land Side    N/A : Not Applicable WS : Water Side CR : Crown		<b>** Rating</b> A : Acceptable M : Minimally Acceptable U : Unacceptable		N : Not Inspected/Rated C : Corrected A/W : Acceptable but Monitor & Maintain		<b>+ Issue Type</b> Ma : Maintenance Deficiency Ob : Design & System Obsolescence En : Enforcement	
--	--	--	--	---	--	---	--



**Flood Control Project Maintenance  
Levee Inspections**

## Maintenance Issue Types Only, Levee Inspection Report By Mile - Spring 2019

### Brannan Andrus Levee Maintenance District

Waterway	Bank	Unit Miles	Inspection Start/End	Inspector
Unit No. 01 Georgiana Slough	Right	6.01	04/23/2019 04/23/2019	David Julian

LM Start	5.26	Rating **	U	Issue No.	89
LM End	5.83	Issue Type +	Ma	Location *	LS
Category	Earthen Levee			GPS Latitude/Longitude	
				Start	End
Item	Vegetation			38.132089 °	38.129643 °
				-121.590746 °	-121.581769 °
DWR ID	DWR_NA0002_01_s_2019_89				
Comment Code					
V1 : Control annual grass and weeds on the levee slopes and easements.					
Inspector Comment					

Photo 1 of 1 : SP\_2019\_NA0002\_62\_89\_20190423\_00110.jpg



View looking downstream at annual vegetation on the landside slope (Spring 2019).

LM Start	5.33	Rating **	M	Issue No.	2
LM End	5.33	Issue Type +	Ma	Location *	WS
Category	Earthen Levee			GPS Latitude/Longitude	
				Start	End
Item	Trim / Thin Trees			38.131327 °	38.131327 °
				-121.589980 °	-121.589980 °
DWR ID	DWR_NA0002_01_s_2012_2				
Comment Code					
T1 : Trim trees to at least five feet above ground level.					
Inspector Comment					

Photo 1 of 1 : SP\_2019\_NA0002\_62\_2\_20190311\_00001.jpg



Looking at untrimmed trees on waterward slope.

LM Start	5.42	Rating **	C	Issue No.	54
LM End	5.42	Issue Type +	Ma	Location *	LS
Category	Earthen Levee			GPS Latitude/Longitude	
				Start	End
Item	Trim / Thin Trees			38.130335 °	38.130335 °
				-121.588920 °	-121.588920 °
DWR ID	DWR_NA0002_01_s_2014_54				
Comment Code					
T1 : Trim trees to at least five feet above ground level.					
Inspector Comment					

No Photos

* Location		** Rating		+ Issue Type	
LS : Land Side	N/A : Not Applicable	A : Acceptable	N : Not Inspected/Rated	Ma : Maintenance Deficiency	
WS : Water Side		M : Minimally Acceptable	C : Corrected	Ob : Design & System Obsolescence	
CR : Crown		U : Unacceptable	A/W : Acceptable but Monitor & Maintain	En : Enforcement	

**Flood Control Project Maintenance  
Levee Inspections**

**Maintenance Issue Types Only, Levee Inspection Report By Mile - Spring 2019**

**Brannan Andrus Levee Maintenance District**

Waterway	Bank	Unit Miles	Inspection Start/End	Inspector
Unit No. 01 Georgiana Slough	Right	6.01	04/23/2019 04/23/2019	David Julian

LM Start	5.43	Rating **	U	Issue No.	23
LM End	5.57	Issue Type +	Ma	Location *	LS
Category	Earthen Levee			GPS Latitude/Longitude	
				Start	End
Item	Vegetation			38.130253 °	38.129359 °
				-121.588822 °	-121.586487 °
DWR ID	DWR_NA0002_01_s_2012_23				
Comment Code					
V2 : Remove the wild growth other than native grasses from the levee slopes.					
Inspector Comment					
Control vegetation at landside toe.					

LM Start	<b>5.43</b>	Rating **	U	Issue No.	<b>23 (cont)</b>
LM End	<b>5.57</b>	Issue Type +	Ma	Location *	LS

Photo 1 of 3 : SP\_2019\_NA0002\_62\_23\_20190311\_00012.jpg



Looking south at vegetation at landward toe. (Spring 2016)

Photo 2 of 3 : SP\_2019\_NA0002\_62\_23\_20190311\_00013.jpg



Looking west at dense vegetation at landward toe.

LM Start	<b>5.43</b>	Rating **	U	Issue No.	<b>23 (cont)</b>
LM End	<b>5.57</b>	Issue Type +	Ma	Location *	LS

Photo 3 of 3 : SP\_2019\_NA0002\_62\_23\_20190311\_00014.jpg



Looking east at dense vegetation at landward toe.

<b>* Location</b> LS : Land Side    N/A : Not Applicable WS : Water Side CR : Crown		<b>** Rating</b> A : Acceptable M : Minimally Acceptable U : Unacceptable N : Not Inspected/Rated C : Corrected A/W : Acceptable but Monitor & Maintain		<b>+ Issue Type</b> Ma : Maintenance Deficiency Ob : Design & System Obsolescence En : Enforcement
--	--	---	--	---

**Flood Control Project Maintenance  
Levee Inspections**

## Maintenance Issue Types Only, Levee Inspection Report By Mile - Spring 2019

### Brannan Andrus Levee Maintenance District

Waterway	Bank	Unit Miles	Inspection Start/End	Inspector
Unit No. 01 Georgiana Slough	Right	6.01	04/23/2019 04/23/2019	David Julian

LM Start	5.64	Rating **	M	Issue No.	81
LM End	5.67	Issue Type +	Ma	Location *	WS
Category	Earthen Levee			GPS Latitude/Longitude	
				Start	End
Item	Vegetation			38.129250 °	38.129281 °
				-121.585193 °	-121.584740 °
DWR ID	DWR_NA0002_01_f_2018_81				
Comment Code					
V2 : Remove the wild growth other than native grasses from the levee slopes.					
Inspector Comment					
Cut blackberries back from waterside shoulder					

Photo 1 of 1 : SP\_2019\_NA0002\_62\_81\_20190311\_00049.jpg



View of vegetation on the water side slope (October 2018).

LM Start	5.72	Rating **	M	Issue No.	90
LM End	5.83	Issue Type +	Ma	Location *	WS
Category	Earthen Levee			GPS Latitude/Longitude	
				Start	End
Item	Vegetation			38.129402 °	38.129643 °
				-121.583753 °	-121.581769 °
DWR ID	DWR_NA0002_01_s_2019_90				
Comment Code					
V2 : Remove the wild growth other than native grasses from the levee slopes.					
Inspector Comment					
Cut blackberries back from waterside shoulder					

No Photos

LM Start	5.78	Rating **	M	Issue No.	17
LM End	5.78	Issue Type +	Ma	Location *	LS
Category	Earthen Levee			GPS Latitude/Longitude	
				Start	End
Item	Trim / Thin Trees			38.129531 °	38.129531 °
				-121.582775 °	-121.582775 °
DWR ID	DWR_NA0002_01_s_2012_17				
Comment Code					
T1 : Trim trees to at least five feet above ground level.					
Inspector Comment					
Trim trees for visibility.					

Photo 1 of 1 : SP\_2019\_NA0002\_62\_17\_20190311\_00010.jpg



Looking at dense trees on landward slope and toe.

* Location LS : Land Side    N/A : Not Applicable WS : Water Side CR : Crown		** Rating A : Acceptable M : Minimally Acceptable U : Unacceptable		N : Not Inspected/Rated C : Corrected A/W : Acceptable but Monitor & Maintain		+ Issue Type Ma : Maintenance Deficiency Ob : Design & System Obsolescence En : Enforcement	
---	--	---	--	---	--	--	--

**Flood Control Project Maintenance  
Levee Inspections**

**Maintenance Issue Types Only, Levee Inspection Report By Mile - Spring 2019**

**Brannan Andrus Levee Maintenance District**

Waterway	Bank	Unit Miles	Inspection Start/End	Inspector
Unit No. 01 Georgiana Slough	Right	6.01	04/23/2019 04/23/2019	David Julian

LM Start	5.86	Rating **	M	Issue No.	16
LM End	6.00	Issue Type +	Ma	Location *	CR
Category	Earthen Levee			GPS Latitude/Longitude	
				Start	End
Item	Vegetation			38.129705 °	38.129626 °
				-121.581196 °	-121.578757 °
DWR ID	DWR_NA0002_01_s_2018_16				
Comment Code					
V9 : Keep the crown roadway free of vegetation.					
Inspector Comment					

No Photos

<b>* Location</b> LS : Land Side    N/A : Not Applicable WS : Water Side CR : Crown	<b>** Rating</b> A : Acceptable M : Minimally Acceptable U : Unacceptable  N : Not Inspected/Rated C : Corrected A/W : Acceptable but Monitor & Maintain	<b>+ Issue Type</b> Ma : Maintenance Deficiency Ob : Design & System Obsolescence En : Enforcement
--	---	---



**Flood Control Project Maintenance  
Levee Inspections**

## Maintenance Issue Types Only, Levee Inspection Report By Mile - Spring 2019

### Brannan Andrus Levee Maintenance District

Waterway	Bank	Unit Miles	Inspection Start/End	Inspector
Unit No. 02 Sacramento River	Left	11.54	04/26/2019 04/26/2019	David Julian

LM Start	0.02	Rating **	M	Issue No.	66
LM End	2.31	Issue Type +	Ma	Location *	LS
Category	Earthen Levee			GPS Latitude/Longitude	
				Start	End
Item	Vegetation			38.191770 °	38.168013 °
				-121.568000 °	-121.595162 °
DWR ID	DWR_NA0002_02_s_2019_66				
Comment Code					
V1 : Control annual grass and weeds on the levee slopes and easements.					
Inspector Comment					

No Photos

LM Start	0.04	Rating **	M	Issue No.	57
LM End	2.07	Issue Type +	Ma	Location *	WS
Category	Earthen Levee			GPS Latitude/Longitude	
				Start	End
Item	Vegetation			38.191675 °	38.170978 °
				-121.568377 °	-121.593159 °
DWR ID	DWR_NA0002_02_s_2019_57				
Comment Code					
V1 : Control annual grass and weeds on the levee slopes and easements.					
Inspector Comment					
Maintain the annual vegetation.					

Photo 1 of 1 : SP\_2019\_NA0002\_63\_57\_20190429\_00193.jpg



View looking downstream at annual vegetation on the waterside slope (Spring 2019).

LM Start	0.72	Rating **	U	Issue No.	97
LM End	0.72	Issue Type +	Ma	Location *	LS
Category	Earthen Levee			GPS Latitude/Longitude	
				Start	End
Item	Trim / Thin Trees			38.187102 °	38.187102 °
				-121.579463 °	-121.579463 °
DWR ID	DWR_NA0002_02_f_2018_97				
Comment Code					
T1 : Trim trees to at least five feet above ground level.					
Inspector Comment					
There is an untrimmed fig tree on the landside toe.					

Photo 1 of 2 : SP\_2019\_NA0002\_63\_97\_20190311\_00056.jpg



\* Location  
LS : Land Side    N/A : Not Applicable  
WS : Water Side  
CR : Crown

\*\* Rating  
A : Acceptable                      N : Not Inspected/Rated  
M : Minimally Acceptable        C : Corrected  
U : Unacceptable                  A/W : Acceptable but Monitor & Maintain

+ Issue Type  
Ma : Maintenance Deficiency  
Ob : Design & System Obsolescence  
En : Enforcement

**Flood Control Project Maintenance  
Levee Inspections**

## Maintenance Issue Types Only, Levee Inspection Report By Mile - Spring 2019

### Brannan Andrus Levee Maintenance District

Waterway	Bank	Unit Miles	Inspection Start/End	Inspector
Unit No. 02 Sacramento River	Left	11.54	04/26/2019 04/26/2019	David Julian

LM Start	0.72	Rating **	U	Issue No.	97 (cont)	
LM End	0.72	Issue Type +	Ma	Location *	LS	
Category	Earthen Levee			GPS Latitude/Longitude		
				Start		End
Item	Trim / Thin Trees			38.187102 °		38.187102 °
				-121.579463 °		-121.579463 °
DWR ID	DWR_NA0002_02_f_2018_97					
Comment Code						
T1 : Trim trees to at least five feet above ground level.						
Inspector Comment						
There is an untrimmed fig tree on the landside toe.						

Photo 2 of 2 : SP\_2019\_NA0002\_63\_97\_20190311\_00057.jpg



Looking east at untrimmed fig tree at landward toe.

LM Start	0.82	Rating **	M	Issue No.	76
LM End	0.82	Issue Type +	Ma	Location *	WS
Category	Earthen Levee			GPS Latitude/Longitude	
				Start	End
Item	Encroachments			38.186317 °	38.186317 °
				-121.580837 °	-121.580837 °
DWR ID	DWR_NA0002_02_f_2018_76				
Comment Code					
PR : Prunings					
Inspector Comment					
Remove prunings.					

Photo 1 of 1 : SP\_2019\_NA0002\_63\_76\_20190311\_00037.jpg



View of prunings on the waterside shoulder (October 2018).

LM Start	1.00	Rating **	M	Issue No.	133
LM End	1.00	Issue Type +	Ma	Location *	WS
Category	Earthen Levee			GPS Latitude/Longitude	
				Start	End
Item	Encroachments			38.184398 °	38.184398 °
				-121.583134 °	-121.583134 °
DWR ID	DWR_NA0002_02_f_2017_133				
Comment Code					
TR : Tree or limb					
Inspector Comment					
Remove downed tree limbs on waterside slope.					

Photo 1 of 1 : SP\_2019\_NA0002\_63\_133\_20190311\_00078.jpg



View of down tree limbs on the waterside slope (October 2018).

<b>* Location</b> LS : Land Side    N/A : Not Applicable WS : Water Side CR : Crown		<b>** Rating</b> A : Acceptable M : Minimally Acceptable U : Unacceptable		N : Not Inspected/Rated C : Corrected A/W : Acceptable but Monitor & Maintain		<b>+ Issue Type</b> Ma : Maintenance Deficiency Ob : Design & System Obsolescence En : Enforcement	
--	--	--	--	---	--	---	--

**Flood Control Project Maintenance  
Levee Inspections**

## Maintenance Issue Types Only, Levee Inspection Report By Mile - Spring 2019

### Brannan Andrus Levee Maintenance District

Waterway	Bank	Unit Miles	Inspection Start/End	Inspector
Unit No. 02 Sacramento River	Left	11.54	04/26/2019 04/26/2019	David Julian

LM Start	<b>1.07</b>	Rating **	C	Issue No.	<b>91</b>
LM End	<b>1.07</b>	Issue Type +	Ma	Location *	WS
Category	Earthen Levee		GPS Latitude/Longitude		
			Start	End	
Item	Encroachments		38.183586 °	38.183586 °	
			-121.584010 °	-121.584010 °	
DWR ID	DWR_NA0002_02_f_2015_91				
Comment Code					
TR : Tree or limb					
Inspector Comment					
Downed tree branches on waterside slope and berm.					

No Photos

LM Start	<b>1.13</b>	Rating **	C	Issue No.	<b>77</b>
LM End	<b>1.13</b>	Issue Type +	Ma	Location *	WS
Category	Earthen Levee		GPS Latitude/Longitude		
			Start	End	
Item	Encroachments		38.182908 °	38.182908 °	
			-121.584607 °	-121.584607 °	
DWR ID	DWR_NA0002_02_f_2018_77				
Comment Code					
TR : Tree or limb					
Inspector Comment					
Remove tree limbs					

No Photos

LM Start	<b>1.16</b>	Rating **	C	Issue No.	<b>92</b>
LM End	<b>1.16</b>	Issue Type +	Ma	Location *	WS
Category	Earthen Levee		GPS Latitude/Longitude		
			Start	End	
Item	Encroachments		38.182527 °	38.182527 °	
			-121.584901 °	-121.584901 °	
DWR ID	DWR_NA0002_02_f_2015_92				
Comment Code					
TR : Tree or limb					
Inspector Comment					
Downed tree branch on waterside slope and berm.					

No Photos

<b>* Location</b> LS : Land Side    N/A : Not Applicable WS : Water Side CR : Crown	<b>** Rating</b> A : Acceptable M : Minimally Acceptable U : Unacceptable	N : Not Inspected/Rated C : Corrected A/W : Acceptable but Monitor & Maintain	<b>+ Issue Type</b> Ma : Maintenance Deficiency Ob : Design & System Obsolescence En : Enforcement
--	--	---	---



**Flood Control Project Maintenance  
Levee Inspections**

## Maintenance Issue Types Only, Levee Inspection Report By Mile - Spring 2019

### Brannan Andrus Levee Maintenance District

Waterway	Bank	Unit Miles	Inspection Start/End	Inspector
Unit No. 02 Sacramento River	Left	11.54	04/26/2019 04/26/2019	David Julian

LM Start	1.33	Rating **	M	Issue No.	81
LM End	1.33	Issue Type +	Ma	Location *	WS
Category	Earthen Levee			GPS Latitude/Longitude	
				Start	End
Item	Encroachments			38.180472 °	38.180472 °
				-121.586510 °	-121.586510 °
DWR ID	DWR_NA0002_02_s_2018_81				
Comment Code					
TR : Tree or limb					
Inspector Comment					
Remove large fallen tree on waterside slope.					

Photo 1 of 1 : SP\_2019\_NA0002\_63\_81\_20190311\_00042.jpg



View of fallen tree on the waterside.

LM Start	1.40	Rating **	M	Issue No.	96
LM End	1.40	Issue Type +	Ma	Location *	LS
Category	Earthen Levee			GPS Latitude/Longitude	
				Start	End
Item	Encroachments			38.179543 °	38.179543 °
				-121.587226 °	-121.587226 °
DWR ID	DWR_NA0002_02_s_2015_96				
Comment Code					
TR : Tree or limb					
Inspector Comment					
There is a roken tree branch on the landside toe.					

Photo 1 of 1 : SP\_2019\_NA0002\_63\_96\_20190311\_00055.jpg



Looking east at broken tree limb at landward toe.

LM Start	1.43	Rating **	M	Issue No.	135
LM End	1.43	Issue Type +	Ma	Location *	WS
Category	Earthen Levee			GPS Latitude/Longitude	
				Start	End
Item	Encroachments			38.179169 °	38.179169 °
				-121.587511 °	-121.587511 °
DWR ID	DWR_NA0002_02_f_2017_135				
Comment Code					
TR : Tree or limb					
Inspector Comment					
Remove downed tree limbs on waterside slope.					

Photo 1 of 1 : SP\_2019\_NA0002\_63\_135\_20190311\_00079.jpg



View of tree limbs on the water side slope (October 2018).

**\* Location**

LS : Land Side    N/A : Not Applicable  
WS : Water Side  
CR : Crown

**\*\* Rating**

A : Acceptable                      N : Not Inspected/Rated  
M : Minimally Acceptable        C : Corrected  
U : Unacceptable                  A/W : Acceptable but Monitor & Maintain

**+ Issue Type**

Ma : Maintenance Deficiency  
Ob : Design & System Obsolescence  
En : Enforcement



**Flood Control Project Maintenance  
Levee Inspections**

## Maintenance Issue Types Only, Levee Inspection Report By Mile - Spring 2019

### Brannan Andrus Levee Maintenance District

Waterway	Bank	Unit Miles	Inspection Start/End	Inspector
Unit No. 02 Sacramento River	Left	11.54	04/26/2019 04/26/2019	David Julian

LM Start	1.57	Rating **	M	Issue No.	173
LM End	1.57	Issue Type +	Ma	Location *	LS
Category	Earthen Levee			GPS Latitude/Longitude	
				Start	End
Item	Trim / Thin Trees			38.177462 °	38.177462 °
				-121.588772 °	-121.588772 °
DWR ID	DWR_NA0002_02_f_2018_173				
Comment Code					
T2 : Thin trees to allow visibility of the ground and room to flood fight.					
Inspector Comment					

No Photos

LM Start	1.60	Rating **	M	Issue No.	35
LM End	1.61	Issue Type +	Ma	Location *	LS
Category	Earthen Levee			GPS Latitude/Longitude	
				Start	End
Item	Trim / Thin Trees			38.177047 °	38.176874 °
				-121.589139 °	-121.589249 °
DWR ID	DWR_NA0002_02_s_2012_35				
Comment Code					
T1 : Trim trees to at least five feet above ground level.					
Inspector Comment					

No Photos

LM Start	1.64	Rating **	M	Issue No.	136
LM End	1.64	Issue Type +	Ma	Location *	LS
Category	Earthen Levee			GPS Latitude/Longitude	
				Start	End
Item	Encroachments			38.176474 °	38.176474 °
				-121.589483 °	-121.589483 °
DWR ID	DWR_NA0002_02_f_2017_136				
Comment Code					
TR : Tree or limb					
Inspector Comment					

No Photos

<b>* Location</b> LS : Land Side    N/A : Not Applicable WS : Water Side CR : Crown		<b>** Rating</b> A : Acceptable                      N : Not Inspected/Rated M : Minimally Acceptable        C : Corrected U : Unacceptable                  A/W : Acceptable but Monitor & Maintain		<b>+ Issue Type</b> Ma : Maintenance Deficiency Ob : Design & System Obsolescence En : Enforcement
--	--	---	--	---

**Flood Control Project Maintenance  
Levee Inspections**

## Maintenance Issue Types Only, Levee Inspection Report By Mile - Spring 2019

### Brannan Andrus Levee Maintenance District

Waterway	Bank	Unit Miles	Inspection Start/End	Inspector
Unit No. 02 Sacramento River	Left	11.54	04/26/2019 04/26/2019	David Julian

LM Start	1.65	Rating **	N	Issue No.	78
LM End	1.65	Issue Type +	Ma	Location *	WS
Category	Earthen Levee			GPS Latitude/Longitude	
				Start	End
Item	Trim / Thin Trees			38.176455 °	38.176455 °
				-121.589515 °	-121.589515 °
DWR ID	DWR_NA0002_02_f_2018_78				
Comment Code					
T5 : Tree stumps.					
Inspector Comment					

Photo 1 of 1 : SP\_2019\_NA0002\_63\_78\_20190311\_00039.jpg



View of tree stump on the waterside slope (October 2018).

LM Start	1.68	Rating **	M	Issue No.	79
LM End	1.68	Issue Type +	Ma	Location *	WS
Category	Earthen Levee			GPS Latitude/Longitude	
				Start	End
Item	Encroachments			38.175968 °	38.175968 °
				-121.589810 °	-121.589810 °
DWR ID	DWR_NA0002_02_f_2018_79				
Comment Code					
TR : Tree or limb					
Inspector Comment					
Remove tree limb from the waterside slope.					

Photo 1 of 1 : SP\_2019\_NA0002\_63\_79\_20190311\_00040.jpg



View looking upstream at large tree limb on the waterside slope (October 2018).

LM Start	1.71	Rating **	M	Issue No.	137
LM End	1.71	Issue Type +	Ma	Location *	WS
Category	Earthen Levee			GPS Latitude/Longitude	
				Start	End
Item	Encroachments			38.175575 °	38.175575 °
				-121.590055 °	-121.590055 °
DWR ID	DWR_NA0002_02_f_2017_137				
Comment Code					
TR : Tree or limb					
Inspector Comment					
Remove tree limbs from the waterside slope.					

Photo 1 of 1 : SP\_2019\_NA0002\_63\_137\_20190311\_00080.jpg



View of downed tree limbs on waterside slope (October 2018).

* Location		** Rating		+ Issue Type	
LS : Land Side	N/A : Not Applicable	A : Acceptable	N : Not Inspected/Rated	Ma : Maintenance Deficiency	
WS : Water Side		M : Minimally Acceptable	C : Corrected	Ob : Design & System Obsolescence	
CR : Crown		U : Unacceptable	A/W : Acceptable but Monitor & Maintain	En : Enforcement	

**Flood Control Project Maintenance  
Levee Inspections**

## Maintenance Issue Types Only, Levee Inspection Report By Mile - Spring 2019

### Brannan Andrus Levee Maintenance District

Waterway	Bank	Unit Miles	Inspection Start/End	Inspector
Unit No. 02 Sacramento River	Left	11.54	04/26/2019 04/26/2019	David Julian

LM Start	1.80	Rating **	M	Issue No.	83
LM End	1.80	Issue Type +	Ma	Location *	WS
Category	Earthen Levee			GPS Latitude/Longitude	
				Start	End
Item	Encroachments			38.174507 °	38.174507 °
				-121.590758 °	-121.590758 °
DWR ID	DWR_NA0002_02_f_2018_83				
Comment Code					
TR : Tree or limb					
Inspector Comment					
Remove limb from the waterside slope.					

Photo 1 of 1 : SP\_2019\_NA0002\_63\_83\_20190311\_00044.jpg



View of down tree limb on waterside slope (October 2018).

LM Start	1.88	Rating **	M	Issue No.	93
LM End	1.89	Issue Type +	Ma	Location *	LS
Category	Earthen Levee			GPS Latitude/Longitude	
				Start	End
Item	Encroachments			38.173403 °	38.173221 °
				-121.591389 °	-121.591512 °
DWR ID	DWR_NA0002_02_f_2015_93				
Comment Code					
TR : Tree or limb					
Inspector Comment					
Broken tree limbs are on the landside slope and toe.					

Photo 1 of 2 : SP\_2019\_NA0002\_63\_93\_20190311\_00052.jpg



Looking southeast at broken tree limb on landward slope.

LM Start	<b>1.88</b>	Rating **	M	Issue No.	<b>93 (cont)</b>
LM End	<b>1.89</b>	Issue Type +	Ma	Location *	LS

Photo 2 of 2 : SP\_2019\_NA0002\_63\_93\_20190311\_00053.jpg



Looking east at broken tree limb at landward toe.

<b>* Location</b> LS : Land Side    N/A : Not Applicable WS : Water Side CR : Crown		<b>** Rating</b> A : Acceptable M : Minimally Acceptable U : Unacceptable		N : Not Inspected/Rated C : Corrected A/W : Acceptable but Monitor & Maintain		<b>+ Issue Type</b> Ma : Maintenance Deficiency Ob : Design & System Obsolescence En : Enforcement	
--	--	--	--	---	--	---	--



**Flood Control Project Maintenance  
Levee Inspections**

**Maintenance Issue Types Only, Levee Inspection Report By Mile - Spring 2019**

**Brannan Andrus Levee Maintenance District**

Waterway	Bank	Unit Miles	Inspection Start/End	Inspector
Unit No. 02 Sacramento River	Left	11.54	04/26/2019 04/26/2019	David Julian

LM Start	1.89	Rating **	M	Issue No.	138
LM End	1.89	Issue Type +	Ma	Location *	LS
Category	Earthen Levee			GPS Latitude/Longitude	
				Start	End
Item	Encroachments			38.173272 °	38.173272 °
				-121.591509 °	-121.591509 °
DWR ID	DWR_NA0002_02_f_2017_138				
Comment Code					
TR : Tree or limb					
Inspector Comment					

Photo 1 of 1 : SP\_2019\_NA0002\_63\_138\_20190311\_00081.jpg



Looking southeast at the landside slope.

LM Start	2.16	Rating **	M	Issue No.	120
LM End	2.16	Issue Type +	Ma	Location *	LS
Category	Earthen Levee			GPS Latitude/Longitude	
				Start	End
Item	Vegetation			38.169814 °	38.169814 °
				-121.593951 °	-121.593951 °
DWR ID	DWR_NA0002_02_f_2016_120				
Comment Code					
V2 : Remove the wild growth other than native grasses from the levee slopes.					
Inspector Comment					
Fig tree saplings are on the landside slope.					

Photo 1 of 1 : SP\_2019\_NA0002\_63\_120\_20190311\_00074.jpg



Looking northeast at fig tree saplings at landward toe.

LM Start	2.34	Rating **	U	Issue No.	25
LM End	2.38	Issue Type +	Ma	Location *	LS
Category	Earthen Levee			GPS Latitude/Longitude	
				Start	End
Item	Trim / Thin Trees			38.167627 °	38.167152 °
				-121.595538 °	-121.595997 °
DWR ID	DWR_NA0002_02_s_2012_25				
Comment Code					
T2 : Thin trees to allow visibility of the ground and room to flood fight.					
Inspector Comment					

Photo 1 of 1 : SP\_2019\_NA0002\_63\_25\_20190311\_00017.jpg



Looking southeast at trees at landward shoulder. (Spring 2015)

\* Location  
LS : Land Side N/A : Not Applicable  
WS : Water Side  
CR : Crown

\*\* Rating  
A : Acceptable N : Not Inspected/Rated  
M : Minimally Acceptable C : Corrected  
U : Unacceptable A/W : Acceptable but Monitor & Maintain

+ Issue Type  
Ma : Maintenance Deficiency  
Ob : Design & System Obsolescence  
En : Enforcement



**Flood Control Project Maintenance  
Levee Inspections**

## Maintenance Issue Types Only, Levee Inspection Report By Mile - Spring 2019

### Brannan Andrus Levee Maintenance District

Waterway	Bank	Unit Miles	Inspection Start/End	Inspector
Unit No. 02 Sacramento River	Left	11.54	04/26/2019 04/26/2019	David Julian

LM Start	2.42	Rating **	U	Issue No.	99
LM End	2.42	Issue Type +	Ma	Location *	LS
Category	Earthen Levee			GPS Latitude/Longitude	
				Start	End
Item	Vegetation			38.166772 °	38.166772 °
				-121.596667 °	-121.596667 °
DWR ID	DWR_NA0002_02_s_2014_99				
Comment Code					
V2 : Remove the wild growth other than native grasses from the levee slopes.					
Inspector Comment					
Dense willows are on the landside slope.					

LM Start	<b>2.42</b>	Rating **	U	Issue No.	<b>99 (cont)</b>
LM End	<b>2.42</b>	Issue Type +	Ma	Location *	LS

Photo 1 of 2 : SP\_2019\_NA0002\_63\_99\_20190311\_00058.jpg



Looking southwest at vegetation (willows) on landward slope and toe.

Photo 2 of 2 : SP\_2019\_NA0002\_63\_99\_20190311\_00059.jpg



LM Start	2.47	Rating **	U	Issue No.	86
LM End	2.57	Issue Type +	Ma	Location *	WS
Category	Earthen Levee			GPS Latitude/Longitude	
				Start	End
Item	Vegetation			38.166453 °	38.165842 °
				-121.597387 °	-121.598995 °
DWR ID	DWR_NA0002_02_f_2018_86				
Comment Code					
V2 : Remove the wild growth other than native grasses from the levee slopes.					
Inspector Comment					
Remove wild growth on the waterside slope.					

Photo 1 of 1 : SP\_2019\_NA0002\_63\_86\_20190311\_00046.jpg



View looking downstream at vegetation on waterside slope (October 2018).

<b>* Location</b> LS : Land Side    N/A : Not Applicable WS : Water Side CR : Crown		<b>** Rating</b> A : Acceptable M : Minimally Acceptable U : Unacceptable		N : Not Inspected/Rated C : Corrected A/W : Acceptable but Monitor & Maintain		<b>+ Issue Type</b> Ma : Maintenance Deficiency Ob : Design & System Obsolescence En : Enforcement	
--	--	--	--	---	--	---	--



**Flood Control Project Maintenance  
Levee Inspections**

**Maintenance Issue Types Only, Levee Inspection Report By Mile - Spring 2019**

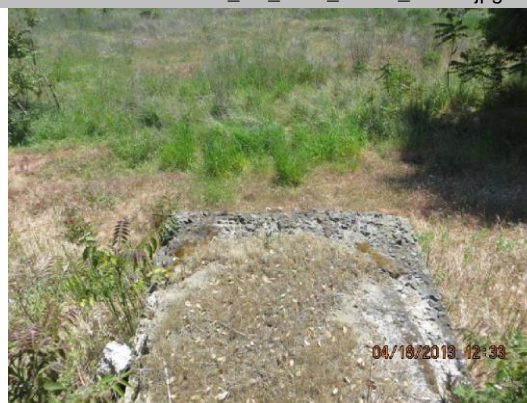
**Brannan Andrus Levee Maintenance District**

Waterway	Bank	Unit Miles	Inspection Start/End	Inspector
Unit No. 02 Sacramento River	Left	11.54	04/26/2019 04/26/2019	David Julian

LM Start	2.54	Rating **	M	Issue No.	181 (cont)	
LM End	2.54	Issue Type +	Ma	Location *		
Category	Supplemental			GPS Latitude/Longitude		
				Start	End	
Item	DWR UCIP LMA Responsibility			38.165980 °	38.165980 °	
				-121.598520 °	-121.598520 °	
DWR ID	21879					
Comment Code						
Inspector Comment						
FS_ID:53389 DS_ID:21879 EP_NO: N/A Repair Type: Non-Urgent Crossing Status: Found UCIP Comments: 07/12/2018 Tunnel is open on both sides. No integrity issue observed, therefore crossing downgraded to "Non-Urgent". (O.Yakimov-DWR UCIP)10/24/2016 same as previous inspection culvert is open on both ends. WS blocked by blankets -- WS structure is being used as a shelter. (O. Magana - DWR UCIP)04/18/2013 Culvert open on both ends. Needs to be abandoned properly. (W. Wylie - DWR UCIP) FIELD_STRUCT_DESC: *ABANDONED* 42-inch by 42-inch open reinforced concrete drainage culvert through the levee, 6 feet below the crown. [Additional Reference(s): DWR Levee Log, 2005, 3-foot by 3.5-foot culvert listed. USACE Sacramento O&M Manual 103, June 1954, (RM 18.16) Drawing No. 6-13-1100]. FS Date: 7/12/2018 2:59:33 PM						

LM Start	<b>2.54</b>	Rating **	M	Issue No.	<b>181 (cont)</b>
LM End	<b>2.54</b>	Issue Type +	Ma	Location *	

Photo 2 of 3 : UCIP\_SP\_2019\_53389\_19772.jpg



Top of concrete tunnel on LS shoulder.

Photo 3 of 3 : UCIP\_SP\_2019\_53389\_19771.jpg



Concrete tunnel on LS shoulder.

<b>* Location</b> LS : Land Side    N/A : Not Applicable WS : Water Side CR : Crown		<b>** Rating</b> A : Acceptable M : Minimally Acceptable U : Unacceptable N : Not Inspected/Rated C : Corrected A/W : Acceptable but Monitor & Maintain		<b>+ Issue Type</b> Ma : Maintenance Deficiency Ob : Design & System Obsolescence En : Enforcement
--	--	---	--	---



**Flood Control Project Maintenance  
Levee Inspections**

## Maintenance Issue Types Only, Levee Inspection Report By Mile - Spring 2019

### Brannan Andrus Levee Maintenance District

Waterway	Bank	Unit Miles	Inspection Start/End	Inspector
Unit No. 02 Sacramento River	Left	11.54	04/26/2019 04/26/2019	David Julian

LM Start	2.56	Rating **	M	Issue No.	82
LM End	2.56	Issue Type +	Ma	Location *	WS
Category	Earthen Levee			GPS Latitude/Longitude	
				Start	End
Item	Slope Stability			38.165898 °	38.165898 °
				-121.598888 °	-121.598888 °
DWR ID	DWR_NA0002_02_f _ 2017_82				
Comment Code					
S2 : Repair the levee slope damaged by foot traffic and prevent access where possible.					
Inspector Comment					
There is a footpath digging into the levee slope.					

Photo 1 of 1 : SP\_2019\_NA0002\_63\_82\_20190311\_00043.jpg



Looking northwest at the waterside slope.

LM Start	2.57	Rating **	M	Issue No.	182	
LM End	2.57	Issue Type +	Ma	Location *		
Category	Supplemental			GPS Latitude/Longitude		
				Start	End	
Item	DWR UCIP LMA Responsibility			38.165775 °	38.165775 °	
				-121.599048 °	-121.599048 °	
DWR ID	21880					
Comment Code						
Inspector Comment						
FS_ID:53513 DS_ID:21880 EP_NO: N/A Repair Type: Non-Urgent Crossing Status: Found UCIP Comments: 07/12/2018 Tunnel is open on both sides. No integrity issue observed, therefore crossing downgraded to "Non-Urgent". (O.Yakimov-DWR UCIP)10/24/2016 same as previous inspection concrete box culvert will need to be abandoned properly. (O. Magana - DWR UCIP)04/18/2013 tunnel should be abandoned properly. (W. Wylie - DWR UCIP) FIELD_STRUCT_DESC: *ABANDONED* 48-inch by 48-inch reinforced concrete drainage culvert through the levee, 6.5-inches below the crown. [Additional Reference(s): DWR Levee Log, 2005. USACE Sacramento O&M Manual 103, June 1954, (RM 18.13) 3-foot by 3-foot concrete box listed, Drawing No. 6-13-1100]. FS Date: 7/12/2018 9:05:37 AM						

Photo 1 of 3 : UCIP\_SP\_2019\_53513\_19776.jpg



Tunnel open on LS shoulder.

<b>* Location</b> LS : Land Side    N/A : Not Applicable WS : Water Side CR : Crown	<b>** Rating</b> A : Acceptable M : Minimally Acceptable U : Unacceptable N : Not Inspected/Rated C : Corrected A/W : Acceptable but Monitor & Maintain	<b>+ Issue Type</b> Ma : Maintenance Deficiency Ob : Design & System Obsolescence En : Enforcement
--	---	---



**Flood Control Project Maintenance  
Levee Inspections**

**Maintenance Issue Types Only, Levee Inspection Report By Mile - Spring 2019**

**Brannan Andrus Levee Maintenance District**

Waterway	Bank	Unit Miles	Inspection Start/End	Inspector
Unit No. 02 Sacramento River	Left	11.54	04/26/2019 04/26/2019	David Julian

LM Start	2.57	Rating **	M	Issue No.	182 (cont)	
LM End	2.57	Issue Type +	Ma	Location *		
Category	Supplemental			GPS Latitude/Longitude		
				Start	End	
Item	DWR UCIP LMA Responsibility			38.165775 °	38.165775 °	
				-121.599048 °	-121.599048 °	
DWR ID	21880					
Comment Code						
Inspector Comment						
FS_ID:53513 DS_ID:21880 EP_NO: N/A Repair Type: Non-Urgent Crossing Status: Found UCIP Comments: 07/12/2018 Tunnel is open on both sides. No integrity issue observed, therefore crossing downgraded to "Non-Urgent". (O.Yakimov-DWR UCIP)10/24/2016 same as previous inspection concrete box culvert will need to be abandoned properly. (O. Magana - DWR UCIP)04/18/2013 tunnel should be abandoned properly. (W. Wylie - DWR UCIP) FIELD_STRUCT_DESC: *ABANDONED* 48-inch by 48-inch reinforced concrete drainage culvert through the levee, 6.5-inches below the crown. [Additional Reference(s): DWR Levee Log, 2005. USACE Sacramento O&M Manual 103, June 1954, (RM 18.13) 3-foot by 3-foot concrete box listed, Drawing No. 6-13-1100]. FS Date: 7/12/2018 9:05:37 AM						

Photo 2 of 3 : UCIP\_SP\_2019\_53513\_77578.jpg



Concrete tunnel on LS shoulder.

LM Start	<b>2.57</b>	Rating **	M	Issue No.	<b>182 (cont)</b>
LM End	<b>2.57</b>	Issue Type +	Ma	Location *	

Photo 3 of 3 : UCIP\_SP\_2019\_53513\_19774.jpg



10'X5' concrete box on WS slope, filled with soil.

<b>* Location</b> LS : Land Side    N/A : Not Applicable WS : Water Side CR : Crown		<b>** Rating</b> A : Acceptable M : Minimally Acceptable U : Unacceptable N : Not Inspected/Rated C : Corrected A/W : Acceptable but Monitor & Maintain		<b>+ Issue Type</b> Ma : Maintenance Deficiency Ob : Design & System Obsolescence En : Enforcement
--	--	---	--	---

**Flood Control Project Maintenance  
Levee Inspections**

## Maintenance Issue Types Only, Levee Inspection Report By Mile - Spring 2019

### Brannan Andrus Levee Maintenance District

Waterway	Bank	Unit Miles	Inspection Start/End	Inspector
Unit No. 02 Sacramento River	Left	11.54	04/26/2019 04/26/2019	David Julian

LM Start	2.58	Rating **	M	Issue No.	74
LM End	2.63	Issue Type +	Ma	Location *	WS
Category	Supplemental			GPS Latitude/Longitude	
				Start	End
Item	2017 USACE Erosion Survey, DRAFT			38.165945 °	38.165498 °
				-121.599345 °	-121.600080 °
DWR ID	DWR_NA0002_02_f_2018_74				
Comment Code					
Inspector Comment					
2017 Site ID: SAC 18.1 L Status: Critical 2017 Field Notes: Upgraded to critical. Vertical slope face behind a tree that is likely to pop-out soon. Site History: 2009 - Short reach of vertical bank at the toe. 2010 - Large tree is getting ready to fall in. 2015 - Freshly exposed tree roots. 2018: Vegetation made it difficult to see but appeared that slope has eroded into levee prism.					

No Photos

LM Start	2.63	Rating **	M	Issue No.	172
LM End	2.63	Issue Type +	Ma	Location *	LS
Category	Earthen Levee			GPS Latitude/Longitude	
				Start	End
Item	Animal Control			38.165348 °	38.165348 °
				-121.599952 °	-121.599952 °
DWR ID	DWR_NA0002_02_f_2018_172				
Comment Code					
A1 : Exterminate rodents and backfill and compact or grout burrows.					
Inspector Comment					
There are multiple squirrel holes with material excavated around the holes. Saw two squirrels in the area.					

Photo 1 of 2 : SP\_2019\_NA0002\_63\_172\_20190311\_00103.jpg



View of animal hole on the landside slope (October 2018)

<b>* Location</b> LS : Land Side    N/A : Not Applicable WS : Water Side CR : Crown		<b>** Rating</b> A : Acceptable                      N : Not Inspected/Rated M : Minimally Acceptable        C : Corrected U : Unacceptable                  A/W : Acceptable but Monitor & Maintain		<b>+ Issue Type</b> Ma : Maintenance Deficiency Ob : Design & System Obsolescence En : Enforcement
--	--	---	--	---





**Flood Control Project Maintenance  
Levee Inspections**

## Maintenance Issue Types Only, Levee Inspection Report By Mile - Spring 2019

### Brannan Andrus Levee Maintenance District

Waterway	Bank	Unit Miles	Inspection Start/End	Inspector
Unit No. 02 Sacramento River	Left	11.54	04/26/2019 04/26/2019	David Julian

LM Start	2.84	Rating **	M	Issue No.	184
LM End	2.84	Issue Type +	Ma	Location *	
Category	Supplemental			GPS Latitude/Longitude	
				Start	End
Item	DWR UCIP LMA Responsibility			38.163850 °	38.163850 °
				-121.603317 °	-121.603317 °
DWR ID	21882				
Comment Code					
Inspector Comment					
FS_ID:53514 DS_ID:21882 EP_NO: N/A Repair Type: Non-Urgent Crossing Status: Found UCIP Comments: 07/12/2018 Tunnel is open on both ends. No integrity issue observed, therefore crossing downgraded to "Non-Urgent". (O.Yakimov-DWR UCIP)10/24/2016 same as previous inspection tunnel is opened on both ends. (O. Magana - DWR UCIP)04/18/2013 Tunnel open on both ends and should be abandoned properly. (W. Wylie - DWR UCIP) FIELD_STRUCT_DESC: *ABANDONED* 48-inch by 72-inch reinforced concrete drainage culvert through the levee, 1 foot below the crown. [Additional Reference(s): DWR Levee Log, 2005, 4-foot by 4.5-foot culvert listed. USACE Sacramento O&M Manual 103, June 1954, (RM 17.89) 48-inch by 52-inch concrete box listed, Drawing No. 6-13-1100]. FS Date: 7/12/2018 9:07:49 AM					

LM Start	<b>2.84</b>	Rating **	M	Issue No.	<b>184 (cont)</b>
LM End	<b>2.84</b>	Issue Type +	Ma	Location *	

Photo 1 of 3 : UCIP\_SP\_2019\_53514\_19782.jpg



Entrance to tunnel on LS slope.

Photo 2 of 3 : UCIP\_SP\_2019\_53514\_19781.jpg



Tunnel opening on WS slope.

<b>* Location</b> LS : Land Side    N/A : Not Applicable WS : Water Side CR : Crown		<b>** Rating</b> A : Acceptable M : Minimally Acceptable U : Unacceptable		N : Not Inspected/Rated C : Corrected A/W : Acceptable but Monitor & Maintain		<b>+ Issue Type</b> Ma : Maintenance Deficiency Ob : Design & System Obsolescence En : Enforcement	
--	--	--	--	---	--	---	--



**Flood Control Project Maintenance  
Levee Inspections**

## Maintenance Issue Types Only, Levee Inspection Report By Mile - Spring 2019

### Brannan Andrus Levee Maintenance District

Waterway	Bank	Unit Miles	Inspection Start/End	Inspector
Unit No. 02 Sacramento River	Left	11.54	04/26/2019 04/26/2019	David Julian

LM Start	2.84	Rating **	M	Issue No.	184 (cont)	
LM End	2.84	Issue Type +	Ma	Location *		
Category	Supplemental			GPS Latitude/Longitude		
				Start	End	
Item	DWR UCIP LMA Responsibility			38.163850 °	38.163850 °	
				-121.603317 °	-121.603317 °	
DWR ID	21882					
Comment Code						
Inspector Comment						
FS_ID:53514 DS_ID:21882 EP_NO: N/A Repair Type: Non-Urgent Crossing Status: Found UCIP Comments: 07/12/2018 Tunnel is open on both ends. No integrity issue observed, therefore crossing downgraded to "Non-Urgent". (O.Yakimov-DWR UCIP)10/24/2016 same as previous inspection tunnel is opened on both ends. (O. Magana - DWR UCIP)04/18/2013 Tunnel open on both ends and should be abandoned properly. (W. Wylie - DWR UCIP) FIELD_STRUCT_DESC: *ABANDONED* 48-inch by 72-inch reinforced concrete drainage culvert through the levee, 1 foot below the crown. [Additional Reference(s): DWR Levee Log, 2005, 4-foot by 4.5-foot culvert listed. USACE Sacramento O&M Manual 103, June 1954, (RM 17.89) 48-inch by 52-inch concrete box listed, Drawing No. 6-13-1100]. FS Date: 7/12/2018 9:07:49 AM						

Photo 3 of 3 : UCIP\_SP\_2019\_53514\_19780.jpg



Tunnel opening on WS slope.

LM Start	3.39	Rating **	M	Issue No.	100
LM End	3.42	Issue Type +	Ma	Location *	WS
Category	Earthen Levee			GPS Latitude/Longitude	
				Start	End
Item	Vegetation			38.162394 °	38.162432 °
				-121.613146 °	-121.613637 °
DWR ID	DWR_NA0002_02_s_2014_100				
Comment Code					
V2 : Remove the wild growth other than native grasses from the levee slopes.					
Inspector Comment					
There is bamboo on the waterside slope.					

Photo 1 of 1 : SP\_2019\_NA0002\_63\_100\_20190311\_00060.jpg



Looking southwest at vegetation (bamboo) on waterward slope.

<b>* Location</b> LS : Land Side    N/A : Not Applicable WS : Water Side CR : Crown		<b>** Rating</b> A : Acceptable M : Minimally Acceptable U : Unacceptable		N : Not Inspected/Rated C : Corrected A/W : Acceptable but Monitor & Maintain	<b>+ Issue Type</b> Ma : Maintenance Deficiency Ob : Design & System Obsolescence En : Enforcement
--	--	--	--	---	---

**Flood Control Project Maintenance  
Levee Inspections**

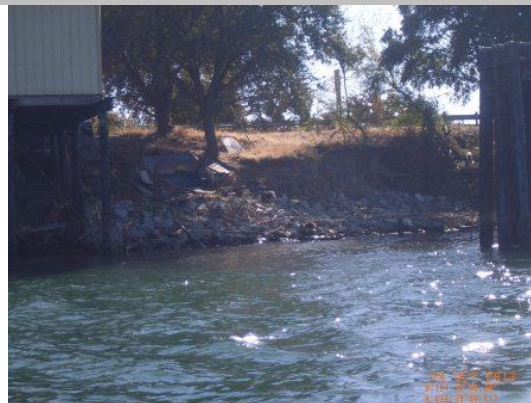
## Maintenance Issue Types Only, Levee Inspection Report By Mile - Spring 2019

### Brannan Andrus Levee Maintenance District

Waterway	Bank	Unit Miles	Inspection Start/End	Inspector
Unit No. 02 Sacramento River	Left	11.54	04/26/2019 04/26/2019	David Julian

LM Start	3.43	Rating **	U	Issue No.	75
LM End	3.56	Issue Type +	Ma	Location *	WS
Category	Supplemental			GPS Latitude/Longitude	
				Start	End
Item	2017 USACE Erosion Survey, DRAFT			38.162459 °	38.162828 °
				-121.613848 °	-121.616263 °
DWR ID	DWR_NA0002_02_f _ 2018_75				
Comment Code					
Inspector Comment					
2017 Site ID: SAC 17.2 L					
Status: Critical					
2017 Field Notes: More rock has been placed in spots along the toe, but it is still insufficient.					
Site History: 2009 - Fluvial erosion, into the levee slope, close to vertical bank with roadway on top. Pilings that were once at the bankline are now 30 ft out. 2010 - Very steep slope with slumps and overturned trees. 2011 - Upgraded to CRITICAL. Sections of vertical slope with highway on top. Heavy vegetation in front of most of the erosion pockets. Structures built into the levee on the upstream end. 2012 - Site continues to worsen. 2013 - Some rock added on the upstream end, but site remains critical.					
2018: Site with erosion almost into roadway still there. Keep as critical.					

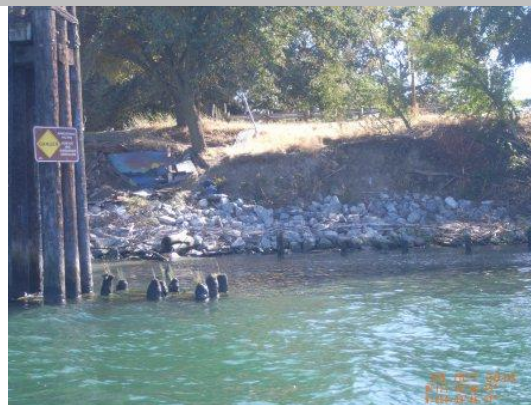
Photo 1 of 2 : SP\_2019\_NA0002\_63\_75\_20190311\_00035.jpg



USACE 2013 Photo #1

LM Start	<b>3.43</b>	Rating **	U	Issue No.	<b>75 (cont)</b>
LM End	<b>3.56</b>	Issue Type +	Ma	Location *	WS

Photo 2 of 2 : SP\_2019\_NA0002\_63\_75\_20190311\_00036.jpg



USACE 2013 Photo #2

<b>* Location</b> LS : Land Side    N/A : Not Applicable WS : Water Side CR : Crown	<b>** Rating</b> A : Acceptable M : Minimally Acceptable U : Unacceptable	N : Not Inspected/Rated C : Corrected A/W : Acceptable but Monitor & Maintain	<b>+ Issue Type</b> Ma : Maintenance Deficiency Ob : Design & System Obsolescence En : Enforcement
--	--	---	---

**Flood Control Project Maintenance  
Levee Inspections**

## Maintenance Issue Types Only, Levee Inspection Report By Mile - Spring 2019

### Brannan Andrus Levee Maintenance District

Waterway	Bank	Unit Miles	Inspection Start/End	Inspector
Unit No. 02 Sacramento River	Left	11.54	04/26/2019 04/26/2019	David Julian

LM Start	3.53	Rating **	U	Issue No.	171
LM End	3.56	Issue Type +	Ma	Location *	LS
Category	Earthen Levee			GPS Latitude/Longitude	
				Start	End
Item	Vegetation			38.162600 °	38.162658 °
				-121.615664 °	-121.616295 °
DWR ID	DWR_NA0002_02_f_2018_171				
Comment Code					
V2 : Remove the wild growth other than native grasses from the levee slopes.					
Inspector Comment					

Photo 1 of 1 : SP\_2019\_NA0002\_63\_171\_20190311\_00102.jpg



View looking upstream at thick vegetation on the landside slope (October 2018).

LM Start	3.57	Rating **	C	Issue No.	111
LM End	3.57	Issue Type +	Ma	Location *	WS
Category	Earthen Levee			GPS Latitude/Longitude	
				Start	End
Item	Vegetation			38.162720 °	38.162720 °
				-121.616493 °	-121.616493 °
DWR ID	DWR_NA0002_02_f_2018_111				
Comment Code					
V2 : Remove the wild growth other than native grasses from the levee slopes.					
Inspector Comment					
Remove the willows next to the roadway.					

No Photos

LM Start	3.92	Rating **	U	Issue No.	98
LM End	3.92	Issue Type +	Ma	Location *	LS
Category	Earthen Levee			GPS Latitude/Longitude	
				Start	End
Item	Vegetation			38.164019 °	38.164019 °
				-121.622642 °	-121.622642 °
DWR ID	DWR_NA0002_02_s_2019_98				
Comment Code					
V2 : Remove the wild growth other than native grasses from the levee slopes.					
Inspector Comment					
Remove arundo from the landside slope.					

Photo 1 of 1 : SP\_2019\_NA0002\_63\_98\_20190429\_00207.jpg



View of arundo on the landside slope (Spring 2019).

<b>* Location</b> LS : Land Side    N/A : Not Applicable WS : Water Side CR : Crown		<b>** Rating</b> A : Acceptable M : Minimally Acceptable U : Unacceptable		<b>+ Issue Type</b> Ma : Maintenance Deficiency Ob : Design & System Obsolescence En : Enforcement	
		N : Not Inspected/Rated C : Corrected A/W : Acceptable but Monitor & Maintain			



**Flood Control Project Maintenance  
Levee Inspections**

## Maintenance Issue Types Only, Levee Inspection Report By Mile - Spring 2019

### Brannan Andrus Levee Maintenance District

Waterway	Bank	Unit Miles	Inspection Start/End	Inspector
Unit No. 02 Sacramento River	Left	11.54	04/26/2019 04/26/2019	David Julian

LM Start	3.96	Rating **	C	Issue No.	102
LM End	3.96	Issue Type +	Ma	Location *	LS
Category	Earthen Levee			GPS Latitude/Longitude	
				Start	End
Item	Trim / Thin Trees			38.164246 °	38.164246 °
				-121.623272 °	-121.623272 °
DWR ID	DWR_NA0002_02_s_2014_102				
Comment Code					
T1 : Trim trees to at least five feet above ground level.					
Inspector Comment					
Untrimmed tree blocking landside slope and toe.					

No Photos

LM Start	4.13	Rating **	M	Issue No.	85
LM End	4.13	Issue Type +	Ma	Location *	WS
Category	Earthen Levee			GPS Latitude/Longitude	
				Start	End
Item	Encroachments			38.165098°	38.165098°
				-121.626133°	-121.626133°
DWR ID	DWR_NA0002_02_s_2019_85				
Comment Code					
PR : Prunings					
Inspector Comment					

Photo 1 of 1 : SP\_2019\_NA0002\_63\_85\_20190311\_00045.jpg



View of prunings on the waterside slope (October 2018).

LM Start	4.29	Rating **	M	Issue No.	113
LM End	4.29	Issue Type +	Ma	Location *	WS
Category	Earthen Levee			GPS Latitude/Longitude	
				Start	End
Item	Encroachments			38.166335 °	38.166335 °
				-121.628785 °	-121.628785 °
DWR ID	DWR_NA0002_02_f_2018_113				
Comment Code					
PR : Prunings					
Inspector Comment					
Remove the prunings from the waterside slope.					

Photo 1 of 1 : SP\_2019\_NA0002\_63\_113\_20190311\_00069.jpg



View of prunings on the waterside slope (October 2018).

<b>* Location</b> LS : Land Side    N/A : Not Applicable WS : Water Side CR : Crown		<b>** Rating</b> A : Acceptable M : Minimally Acceptable U : Unacceptable		N : Not Inspected/Rated C : Corrected A/W : Acceptable but Monitor & Maintain		<b>+ Issue Type</b> Ma : Maintenance Deficiency Ob : Design & System Obsolescence En : Enforcement	
--	--	--	--	---	--	---	--

**Flood Control Project Maintenance  
Levee Inspections**

## Maintenance Issue Types Only, Levee Inspection Report By Mile - Spring 2019

### Brannan Andrus Levee Maintenance District

Waterway	Bank	Unit Miles	Inspection Start/End	Inspector
Unit No. 02 Sacramento River	Left	11.54	04/26/2019 04/26/2019	David Julian

LM Start	4.58	Rating **	M	Issue No.	166
LM End	4.58	Issue Type +	Ma	Location *	LS
Category	Earthen Levee			GPS Latitude/Longitude	
				Start	End
Item	Encroachments			38.167637 °	38.167637 °
				-121.633727 °	-121.633727 °
DWR ID	DWR_NA0002_02_f_2018_166				
Comment Code					
PR : Prunings					
Inspector Comment					
Remove the prunings from the landside slope.					

Photo 1 of 1 : SP\_2019\_NA0002\_63\_166\_20190311\_00099.jpg



View of prunings on the landside slope (October 2018).

LM Start	4.58	Rating **	U	Issue No.	167
LM End	4.58	Issue Type +	Ma	Location *	LS
Category	Earthen Levee			GPS Latitude/Longitude	
				Start	End
Item	Animal Control			38.167637 °	38.167637 °
				-121.633727 °	-121.633727 °
DWR ID	DWR_NA0002_02_f_2018_167				
Comment Code					
A1 : Exterminate rodents and backfill and compact or grout burrows.					
Inspector Comment					
There are over 5 animal holes with lots of material excavated.					

Photo 1 of 1 : SP\_2019\_NA0002\_63\_167\_20190311\_00100.jpg



View of several animal holes. Additional holes were found in the immediate vicinity.

LM Start	4.59	Rating **	M	Issue No.	95
LM End	5.62	Issue Type +	Ma	Location *	LS
Category	Earthen Levee			GPS Latitude/Longitude	
				Start	End
Item	Vegetation			38.167682 °	38.172173 °
				-121.633875 °	-121.651177 °
DWR ID	DWR_NA0002_02_s_2019_95				
Comment Code					
V1 : Control annual grass and weeds on the levee slopes and easements.					
Inspector Comment					
Maintain annual vegetation all the way down the landside slope.					

Photo 1 of 1 : SP\_2019\_NA0002\_63\_95\_20190429\_00205.jpg



View looking upstream at annual vegetation at the bottom of the landside slope (Spring 2019)

* Location		** Rating		+ Issue Type	
LS : Land Side	N/A : Not Applicable	A : Acceptable	N : Not Inspected/Rated	Ma : Maintenance Deficiency	
WS : Water Side		M : Minimally Acceptable	C : Corrected	Ob : Design & System Obsolescence	
CR : Crown		U : Unacceptable	A/W : Acceptable but Monitor & Maintain	En : Enforcement	

**Flood Control Project Maintenance  
Levee Inspections**

## Maintenance Issue Types Only, Levee Inspection Report By Mile - Spring 2019

### Brannan Andrus Levee Maintenance District

Waterway	Bank	Unit Miles	Inspection Start/End	Inspector
Unit No. 02 Sacramento River	Left	11.54	04/26/2019 04/26/2019	David Julian

LM Start	4.70	Rating **	M	Issue No.	87
LM End	4.70	Issue Type +	Ma	Location *	LS
Category	Earthen Levee			GPS Latitude/Longitude	
				Start	End
Item	Trim / Thin Trees			38.168342 °	38.168342 °
				-121.635645 °	-121.635645 °
DWR ID	DWR_NA0002_02_s_2017_87				
Comment Code					
T2 : Thin trees to allow visibility of the ground and room to flood fight.					
Inspector Comment					

No Photos

LM Start	4.70	Rating **	U	Issue No.	123
LM End	4.72	Issue Type +	Ma	Location *	WS
Category	Earthen Levee			GPS Latitude/Longitude	
				Start	End
Item	Vegetation			38.168348 °	38.168456 °
				-121.635726 °	-121.636125 °
DWR ID	DWR_NA0002_02_f_2016_123				
Comment Code					
V2 : Remove the wild growth other than native grasses from the levee slopes.					
Inspector Comment					
There are dense grapevines on waterside slope.					

Photo 1 of 1 : SP\_2019\_NA0002\_63\_123\_20190311\_00075.jpg



Looking west at dense vines on waterward slope and toe.

LM Start	4.91	Rating **	M	Issue No.	164
LM End	4.91	Issue Type +	Ma	Location *	LS
Category	Earthen Levee			GPS Latitude/Longitude	
				Start	End
Item	Animal Control			38.169215 °	38.169215 °
				-121.639407 °	-121.639407 °
DWR ID	DWR_NA0002_02_f_2018_164				
Comment Code					
A1 : Exterminate rodents and backfill and compact or grout burrows.					
Inspector Comment					

No Photos

* Location		** Rating		+ Issue Type	
LS : Land Side	N/A : Not Applicable	A : Acceptable	N : Not Inspected/Rated	Ma : Maintenance Deficiency	
WS : Water Side		M : Minimally Acceptable	C : Corrected	Ob : Design & System Obsolescence	
CR : Crown		U : Unacceptable	A/W : Acceptable but Monitor & Maintain	En : Enforcement	



**Flood Control Project Maintenance  
Levee Inspections**

## Maintenance Issue Types Only, Levee Inspection Report By Mile - Spring 2019

### Brannan Andrus Levee Maintenance District

Waterway	Bank	Unit Miles	Inspection Start/End	Inspector
Unit No. 02 Sacramento River	Left	11.54	04/26/2019 04/26/2019	David Julian

LM Start	4.92	Rating **	M	Issue No.	88
LM End	4.92	Issue Type +	Ma	Location *	LS
Category	Earthen Levee			GPS Latitude/Longitude	
				Start	End
Item	Encroachments			38.169262 °	38.169262 °
				-121.639497 °	-121.639497 °
DWR ID	DWR_NA0002_02_s_2017_88				
Comment Code					
TR : Tree or limb					
Inspector Comment					
Remove dead tree on landside slope.					

Photo 1 of 1 : SP\_2019\_NA0002\_63\_88\_20190311\_00047.jpg



Looking east at dead tree on landward slope and toe.

LM Start	5.01	Rating **	U	Issue No.	163	
LM End	5.01	Issue Type +	Ma	Location *	LS	
Category	Earthen Levee			GPS Latitude/Longitude		
				Start		End
Item	Trim / Thin Trees			38.169750 °		38.169750 °
				-121.641107 °		-121.641107 °
DWR ID	DWR_NA0002_02_f_2018_163					
Comment Code						
T2 : Thin trees to allow visibility of the ground and room to flood fight.						
Inspector Comment						
Trim the fig tree on the landside slope.						

Photo 1 of 1 : SP\_2019\_NA0002\_63\_163\_20190429\_00206.jpg



View looking downstream at fig tree on the landside slope (Spring 2019).

LM Start	5.11	Rating **	M	Issue No.	162
LM End	5.11	Issue Type +	Ma	Location *	LS
Category	Earthen Levee			GPS Latitude/Longitude	
				Start	End
Item	Encroachments			38.170687 °	38.170687 °
				-121.642475 °	-121.642475 °
DWR ID	DWR_NA0002_02_f_2018_162				
Comment Code					
TR : Tree or limb					
Inspector Comment					
Remove the tree from the landside toe.					

No Photos

* Location		** Rating		+ Issue Type	
LS : Land Side	N/A : Not Applicable	A : Acceptable	N : Not Inspected/Rated	Ma : Maintenance Deficiency	
WS : Water Side		M : Minimally Acceptable	C : Corrected	Ob : Design & System Obsolescence	
CR : Crown		U : Unacceptable	A/W : Acceptable but Monitor & Maintain	En : Enforcement	

**Flood Control Project Maintenance  
Levee Inspections**

## Maintenance Issue Types Only, Levee Inspection Report By Mile - Spring 2019

### Brannan Andrus Levee Maintenance District

Waterway	Bank	Unit Miles	Inspection Start/End	Inspector
Unit No. 02 Sacramento River	Left	11.54	04/26/2019 04/26/2019	David Julian

LM Start	5.15	Rating **	C	Issue No.	161
LM End	5.15	Issue Type +	Ma	Location *	LS
Category	Earthen Levee			GPS Latitude/Longitude	
				Start	End
Item	Encroachments			38.171135 °	38.171135 °
				-121.642927 °	-121.642927 °
DWR ID	DWR_NA0002_02_f_2018_161				
Comment Code					
TR : Tree or limb					
Inspector Comment					
Remove tree limbs from land side slope					

No Photos

LM Start	5.25	Rating **	M	Issue No.	124
LM End	5.29	Issue Type +	Ma	Location *	LS
Category	Earthen Levee			GPS Latitude/Longitude	
				Start	End
Item	Animal Control			38.171928 °	38.171873 °
				-121.644455 °	-121.645082 °
DWR ID	DWR_NA0002_02_f_2017_124				
Comment Code					
A1 : Exterminate rodents and backfill and compact or grout burrows.					
Inspector Comment					

No Photos

LM Start	5.33	Rating **	C	Issue No.	9
LM End	5.33	Issue Type +	Ma	Location *	WS
Category	Earthen Levee			GPS Latitude/Longitude	
				Start	End
Item	Trim / Thin Trees			38.171880 °	38.171880 °
				-121.645879 °	-121.645879 °
DWR ID	DWR_NA0002_02_s_2012_9				
Comment Code					
T2 : Thin trees to allow visibility of the ground and room to flood fight.					
Inspector Comment					

No Photos

* Location		** Rating		+ Issue Type	
LS : Land Side	N/A : Not Applicable	A : Acceptable	N : Not Inspected/Rated	Ma : Maintenance Deficiency	
WS : Water Side		M : Minimally Acceptable	C : Corrected	Ob : Design & System Obsolescence	
CR : Crown		U : Unacceptable	A/W : Acceptable but Monitor & Maintain	En : Enforcement	

**Flood Control Project Maintenance  
Levee Inspections**

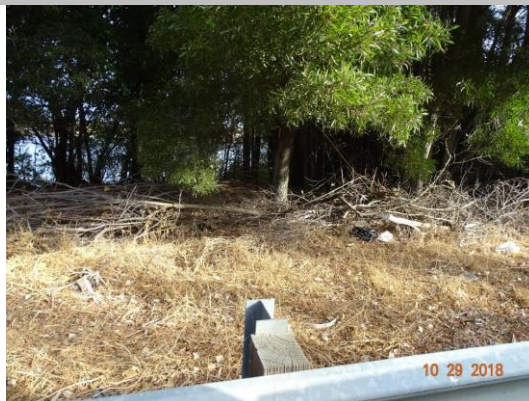
## Maintenance Issue Types Only, Levee Inspection Report By Mile - Spring 2019

### Brannan Andrus Levee Maintenance District

Waterway	Bank	Unit Miles	Inspection Start/End	Inspector
Unit No. 02 Sacramento River	Left	11.54	04/26/2019 04/26/2019	David Julian

LM Start	5.36	Rating **	M	Issue No.	115
LM End	5.36	Issue Type +	Ma	Location *	WS
Category	Earthen Levee			GPS Latitude/Longitude	
				Start	End
Item	Encroachments			38.171892 °	38.171892 °
				-121.646387 °	-121.646387 °
DWR ID	DWR_NA0002_02_f_2018_115				
Comment Code					
PR : Prunings					
Inspector Comment					
Remove the prunings from the waterside slope.					

Photo 1 of 1 : SP\_2019\_NA0002\_63\_115\_20190311\_00070.jpg



View of prunings on the waterside slope (October 2018).

LM Start	5.38	Rating **	M	Issue No.	116	
LM End	5.38	Issue Type +	Ma	Location *	WS	
Category	Earthen Levee			GPS Latitude/Longitude		
				Start	End	
Item	Encroachments			38.171858 °	38.171858 °	
				-121.646832 °	-121.646832 °	
DWR ID	DWR_NA0002_02_f_2018_116					
Comment Code						
PR : Prunings						
Inspector Comment						
Remove the prunings from the waterside slope.						

Photo 1 of 1 : SP\_2019\_NA0002\_63\_116\_20190311\_00071.jpg



LM Start	5.40	Rating **	M	Issue No.	117
LM End	5.40	Issue Type +	Ma	Location *	WS
Category	Earthen Levee			GPS Latitude/Longitude	
				Start	End
Item	Encroachments			38.171830 °	38.171830 °
				-121.647125 °	-121.647125 °
DWR ID	DWR_NA0002_02_s_2019_117				
Comment Code					
PR : Prunings					
Inspector Comment					
Remove the prunings from the waterside slope.					

Photo 1 of 1 : SP\_2019\_NA0002\_63\_117\_20190311\_00072.jpg



View of prunings on the waterside slope (October 2018)

<b>* Location</b>		<b>** Rating</b>		<b>+ Issue Type</b>	
LS : Land Side	N/A : Not Applicable	A : Acceptable	N : Not Inspected/Rated	Ma : Maintenance Deficiency	
WS : Water Side		M : Minimally Acceptable	C : Corrected	Ob : Design & System Obsolescence	
CR : Crown		U : Unacceptable	A/W : Acceptable but Monitor & Maintain	En : Enforcement	



**Flood Control Project Maintenance  
Levee Inspections**

## Maintenance Issue Types Only, Levee Inspection Report By Mile - Spring 2019

### Brannan Andrus Levee Maintenance District

Waterway	Bank	Unit Miles	Inspection Start/End	Inspector
Unit No. 02 Sacramento River	Left	11.54	04/26/2019 04/26/2019	David Julian

LM Start	5.43	Rating **	M	Issue No.	121
LM End	5.43	Issue Type +	Ma	Location *	WS
Category	Earthen Levee			GPS Latitude/Longitude	
				Start	End
Item	Trim / Thin Trees			38.171837 °	38.171837 °
				-121.647735 °	-121.647735 °
DWR ID	DWR_NA0002_02_f_2018_121				
Comment Code					
T2 : Thin trees to allow visibility of the ground and room to flood fight.					
Inspector Comment					

No Photos

LM Start	5.58	Rating **	M	Issue No.	10
LM End	5.62	Issue Type +	Ma	Location *	WS
Category	Earthen Levee			GPS Latitude/Longitude	
				Start	End
Item	Trim / Thin Trees			38.172019 °	38.172238 °
				-121.650327 °	-121.651163 °
DWR ID	DWR_NA0002_02_s_2012_10				
Comment Code					
T1 : Trim trees to at least five feet above ground level.					
Inspector Comment					

No Photos

LM Start	5.65	Rating **	U	Issue No.	11
LM End	5.69	Issue Type +	Ma	Location *	WS
Category	Earthen Levee			GPS Latitude/Longitude	
				Start	End
Item	Vegetation			38.172308 °	38.172497 °
				-121.651552 °	-121.652243 °
DWR ID	DWR_NA0002_02_s_2012_11				
Comment Code					
V2 : Remove the wild growth other than native grasses from the levee slopes.					
Inspector Comment					
Remove arundo on the waterside slope.					

Photo 1 of 2 : SP\_2019\_NA0002\_63\_11\_20190311\_00010.jpg



Looking northwest at arundo on waterward slope. (Fall 2016)

* Location		** Rating		+ Issue Type	
LS : Land Side	N/A : Not Applicable	A : Acceptable	N : Not Inspected/Rated	Ma : Maintenance Deficiency	
WS : Water Side		M : Minimally Acceptable	C : Corrected	Ob : Design & System Obsolescence	
CR : Crown		U : Unacceptable	A/W : Acceptable but Monitor & Maintain	En : Enforcement	

**Flood Control Project Maintenance  
Levee Inspections**

**Maintenance Issue Types Only, Levee Inspection Report By Mile - Spring 2019**

**Brannan Andrus Levee Maintenance District**

Waterway	Bank	Unit Miles	Inspection Start/End	Inspector
Unit No. 02 Sacramento River	Left	11.54	04/26/2019 04/26/2019	David Julian

LM Start	5.65	Rating **	U	Issue No.	11 (cont)	
LM End	5.69	Issue Type +	Ma	Location *	WS	
Category	Earthen Levee			GPS Latitude/Longitude		
				Start		End
Item	Vegetation			38.172308 °	38.172497 °	
				-121.651552 °	-121.652243 °	
DWR ID	DWR_NA0002_02_s _ 2012_11					
Comment Code						
V2 : Remove the wild growth other than native grasses from the levee slopes.						
Inspector Comment						
Remove arundo on the waterside slope.						

Photo 2 of 2 : SP\_2019\_NA0002\_63\_11\_20190311\_00011.jpg



Looking west at arundo on waterward slope. (Spring 2016)

LM Start	5.66	Rating **	M	Issue No.	36
LM End	5.69	Issue Type +	Ma	Location *	LS
Category	Earthen Levee			GPS Latitude/Longitude	
				Start	End
Item	Trim / Thin Trees			38.172388 °	38.172512 °
				-121.651892 °	-121.652322 °
DWR ID	DWR_NA0002_02_s _ 2012_36				
Comment Code					
T1 : Trim trees to at least five feet above ground level.					
Inspector Comment					

No Photos

<b>* Location</b> LS : Land Side    N/A : Not Applicable WS : Water Side CR : Crown		<b>** Rating</b> A : Acceptable                      N : Not Inspected/Rated M : Minimally Acceptable        C : Corrected U : Unacceptable                  A/W : Acceptable but Monitor & Maintain		<b>+ Issue Type</b> Ma : Maintenance Deficiency Ob : Design & System Obsolescence En : Enforcement
--	--	---	--	---

**Flood Control Project Maintenance  
Levee Inspections**

**Maintenance Issue Types Only, Levee Inspection Report By Mile - Spring 2019**

**Brannan Andrus Levee Maintenance District**

Waterway	Bank	Unit Miles	Inspection Start/End	Inspector
Unit No. 02 Sacramento River	Left	11.54	04/26/2019 04/26/2019	David Julian

LM Start	5.77	Rating **	M	Issue No.	200
LM End	5.77	Issue Type +	Ma	Location *	
Category	Supplemental			GPS Latitude/Longitude	
				Start	End
Item	DWR UCIP LMA Responsibility			38.172940 °	38.172940 °
				-121.653700 °	-121.653700 °
DWR ID	21912				
Comment Code					
Inspector Comment					
FS_ID:12778 DS_ID:21912 EP_NO: N/A Repair Type: Non-Urgent Crossing Status: Found UCIP Comments: Pipe abandoned. Erosion on WS slope at location where pipe should be. FIELD_STRUCT_DESC: *ABANDONED* 12-inch drainage pipe of an unknown material through the levee, 13 feet below the crown. Pump and gate valve in pump house at the landside (LS) toe. 1.5-inch electrical conduit along pipe at same location. 42-inch concrete standpipe at the LS toe. [Additional Reference(s): USACE Sacramento O&M Manual 102, April 1959, (RM 14.8) (Reclamation District No. 2067) steel pipe listed FS Date: 5/2/2013					

LM Start	<b>5.77</b>	Rating **	M	Issue No.	<b>200 (cont)</b>
LM End	<b>5.77</b>	Issue Type +	Ma	Location *	

Photo 1 of 3 : UCIP\_SP\_2019\_12778\_20762.jpg



Conduit at WS toe.

Photo 2 of 3 : UCIP\_SP\_2019\_12778\_20761.jpg



Erosion along pipe alignment at WS slope.

<b>* Location</b> LS : Land Side    N/A : Not Applicable WS : Water Side CR : Crown		<b>** Rating</b> A : Acceptable M : Minimally Acceptable U : Unacceptable N : Not Inspected/Rated C : Corrected A/W : Acceptable but Monitor & Maintain		<b>+ Issue Type</b> Ma : Maintenance Deficiency Ob : Design & System Obsolescence En : Enforcement
--	--	---	--	---



**Flood Control Project Maintenance  
Levee Inspections**

## Maintenance Issue Types Only, Levee Inspection Report By Mile - Spring 2019

### Brannan Andrus Levee Maintenance District

Waterway	Bank	Unit Miles	Inspection Start/End	Inspector
Unit No. 02 Sacramento River	Left	11.54	04/26/2019 04/26/2019	David Julian

LM Start	5.77	Rating **	M	Issue No.	200 (cont)	
LM End	5.77	Issue Type +	Ma	Location *		
Category	Supplemental			GPS Latitude/Longitude		
				Start		End
Item	DWR UCIP LMA Responsibility			38.172940 °		38.172940 °
				-121.653700 °		-121.653700 °
DWR ID	21912					
Comment Code						
Inspector Comment						
FS_ID:12778 DS_ID:21912 EP_NO: N/A Repair Type: Non-Urgent Crossing Status: Found UCIP Comments: Pipe abandoned. Erosion on WS slope at location where pipe should be. FIELD_STRUCT_DESC: *ABANDONED* 12-inch drainage pipe of an unknown material through the levee, 13 feet below the crown. Pump and gate valve in pump house at the landside (LS) toe. 1.5-inch electrical conduit along pipe at same location. 42-inch concrete standpipe at the LS toe. [Additional Reference(s): USACE Sacramento O&M Manual 102, April 1959, (RM 14.8) (Reclamation District No. 2067) steel pipe listed FS Date: 5/2/2013						

Photo 3 of 3 : UCIP\_SP\_2019\_12778\_20760.jpg



Concrete standpipe and pump on LS toe.

LM Start	6.04	Rating **	U	Issue No.	129
LM End	6.04	Issue Type +	Ma	Location *	WS
Category	Earthen Levee			GPS Latitude/Longitude	
				Start	End
Item	Vegetation				38.174613 °
				-121.658168 °	-121.658168 °
DWR ID	DWR_NA0002_02_f_2018_129				
Comment Code					
V2 : Remove the wild growth other than native grasses from the levee slopes.					
Inspector Comment					
Remove arundo on the waterside shoulder.					

Photo 1 of 1 : SP\_2019\_NA0002\_63\_129\_20190311\_00076.jpg



View looking upstream at arundo on waterside shoulder (October 2018).

<b>* Location</b> LS : Land Side    N/A : Not Applicable WS : Water Side CR : Crown	<b>** Rating</b> A : Acceptable M : Minimally Acceptable U : Unacceptable	N : Not Inspected/Rated C : Corrected A/W : Acceptable but Monitor & Maintain	<b>+ Issue Type</b> Ma : Maintenance Deficiency Ob : Design & System Obsolescence En : Enforcement
--	--	---	---

**Flood Control Project Maintenance  
Levee Inspections**

## Maintenance Issue Types Only, Levee Inspection Report By Mile - Spring 2019

### Brannan Andrus Levee Maintenance District

Waterway	Bank	Unit Miles	Inspection Start/End	Inspector
Unit No. 02 Sacramento River	Left	11.54	04/26/2019 04/26/2019	David Julian

LM Start	6.05	Rating **	M	Issue No.	89
LM End	7.60	Issue Type +	Ma	Location *	LS
Category	Earthen Levee			GPS Latitude/Longitude	
				Start	End
Item	Vegetation			38.174592 °	38.158514 °
				-121.658292 °	-121.675448 °
DWR ID	DWR_NA0002_02_s_2019_89				
Comment Code					
V1 : Control annual grass and weeds on the levee slopes and easements.					
Inspector Comment					
Maintain annual vegetation all the way down the landside slope.					

Photo 1 of 1 : SP\_2019\_NA0002\_63\_89\_20190429\_00203.jpg



View looking upstream at annual vegetation at the bottom of the landside slope (Spring 2019).

LM Start	6.12	Rating **	M	Issue No.	103
LM End	6.12	Issue Type +	Ma	Location *	LS
Category	Earthen Levee			GPS Latitude/Longitude	
				Start	End
Item	Vegetation			38.174670 °	38.174670 °
				-121.659592 °	-121.659592 °
DWR ID	DWR_NA0002_02_f_2015_103				
Comment Code					
V4 : Elderberries are blocking visibility and flood fight capability.					
Inspector Comment					

No Photos

LM Start	6.14	Rating **	U	Issue No.	130
LM End	6.14	Issue Type +	Ma	Location *	WS
Category	Earthen Levee			GPS Latitude/Longitude	
				Start	End
Item	Vegetation			38.174608 °	38.174608 °
				-121.659917 °	-121.659917 °
DWR ID	DWR_NA0002_02_f_2018_130				
Comment Code					
V4 : Elderberries are blocking visibility and flood fight capability.					
Inspector Comment					

No Photos

* Location		** Rating		+ Issue Type	
LS : Land Side	N/A : Not Applicable	A : Acceptable	N : Not Inspected/Rated	Ma : Maintenance Deficiency	
WS : Water Side		M : Minimally Acceptable	C : Corrected	Ob : Design & System Obsolescence	
CR : Crown		U : Unacceptable	A/W : Acceptable but Monitor & Maintain	En : Enforcement	

**Flood Control Project Maintenance  
Levee Inspections**

## Maintenance Issue Types Only, Levee Inspection Report By Mile - Spring 2019

### Brannan Andrus Levee Maintenance District

Waterway	Bank	Unit Miles	Inspection Start/End	Inspector
Unit No. 02 Sacramento River	Left	11.54	04/26/2019 04/26/2019	David Julian

LM Start	6.22	Rating **	M	Issue No.	84
LM End	6.22	Issue Type +	Ma	Location *	LS
Category	Earthen Levee			GPS Latitude/Longitude	
				Start	End
Item	Encroachments			38.174205 °	38.174205 °
				-121.661471 °	-121.661471 °
DWR ID	DWR_NA0002_02_f_2017_84				
Comment Code					
TR : Tree or limb					
Inspector Comment					
There is a dead tree on the landside.					

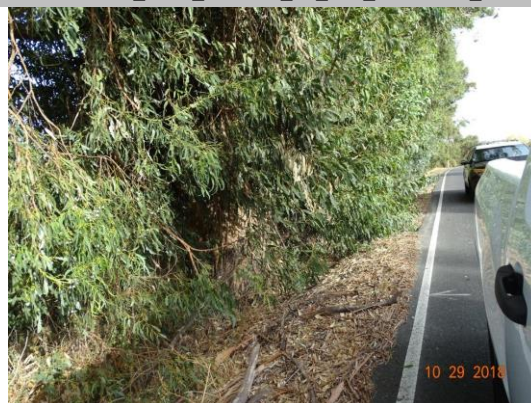
No Photos

LM Start	6.38	Rating **	C	Issue No.	131
LM End	6.38	Issue Type +	Ma	Location *	WS
Category	Earthen Levee			GPS Latitude/Longitude	
				Start	End
Item	Trim / Thin Trees			38.173370 °	38.173370 °
				-121.664045 °	-121.664045 °
DWR ID	DWR_NA0002_02_f_2018_131				
Comment Code					
T2 : Thin trees to allow visibility of the ground and room to flood fight.					
Inspector Comment					

No Photos

LM Start	6.78	Rating **	U	Issue No.	132
LM End	6.80	Issue Type +	Ma	Location *	WS
Category	Earthen Levee			GPS Latitude/Longitude	
				Start	End
Item	Trim / Thin Trees			38.169330 °	38.168987 °
				-121.669225 °	-121.669443 °
DWR ID	DWR_NA0002_02_f_2018_132				
Comment Code					
T2 : Thin trees to allow visibility of the ground and room to flood fight.					
Inspector Comment					

Photo 1 of 1 : SP\_2019\_NA0002\_63\_132\_20190311\_00077.jpg



View looking upstream at thick tree branches on the waterside slope (October 2018).

* Location		** Rating		+ Issue Type	
LS : Land Side	N/A : Not Applicable	A : Acceptable	N : Not Inspected/Rated	Ma : Maintenance Deficiency	
WS : Water Side		M : Minimally Acceptable	C : Corrected	Ob : Design & System Obsolescence	
CR : Crown		U : Unacceptable	A/W : Acceptable but Monitor & Maintain	En : Enforcement	



**Flood Control Project Maintenance  
Levee Inspections**

## Maintenance Issue Types Only, Levee Inspection Report By Mile - Spring 2019

### Brannan Andrus Levee Maintenance District

Waterway	Bank	Unit Miles	Inspection Start/End	Inspector
Unit No. 02 Sacramento River	Left	11.54	04/26/2019 04/26/2019	David Julian

LM Start	6.83	Rating **	C	Issue No.	139
LM End	6.83	Issue Type +	Ma	Location *	WS
Category	Earthen Levee			GPS Latitude/Longitude	
				Start	End
Item	Encroachments			38.168600 °	38.168600 °
				-121.669542 °	-121.669542 °
DWR ID	DWR_NA0002_02_f_2018_139				
Comment Code					
TR : Tree or limb					
Inspector Comment					
Remove down tree limb from water side shoulder					

No Photos

LM Start	6.94	Rating **	M	Issue No.	140
LM End	6.96	Issue Type +	Ma	Location *	WS
Category	Earthen Levee			GPS Latitude/Longitude	
				Start	End
Item	Trim / Thin Trees			38.167130 °	38.166878 °
				-121.670180 °	-121.670313 °
DWR ID	DWR_NA0002_02_s_2019_140				
Comment Code					
T2 : Thin trees to allow visibility of the ground and room to flood fight.					
Inspector Comment					

No Photos

LM Start	6.98	Rating **	U	Issue No.	71
LM End	7.04	Issue Type +	Ma	Location *	WS
Category	Supplemental			GPS Latitude/Longitude	
				Start	End
Item	2017 USACE Erosion Survey, DRAFT			38.166583 °	38.165794 °
				-121.670684 °	-121.671014 °
DWR ID	DWR_NA0002_02_f_2018_71				
Comment Code					
Inspector Comment					
2017 Site ID: SAC 13.6 L					
Status: Critical					
2017 Field Notes: upgraded to critical. nearly vertical face from levee hinge. trees with large root balls likely to fail.					
Site History: 2011 - Large section of bank slumped off.					
2018: Site should stay critical					

Photo 1 of 1 : SP\_2019\_NA0002\_63\_71\_20190311\_00034.jpg



USACE 2013 Photo #1

* Location		** Rating		+ Issue Type	
LS : Land Side	N/A : Not Applicable	A : Acceptable	N : Not Inspected/Rated	Ma : Maintenance Deficiency	
WS : Water Side		M : Minimally Acceptable	C : Corrected	Ob : Design & System Obsolescence	
CR : Crown		U : Unacceptable	A/W : Acceptable but Monitor & Maintain	En : Enforcement	

**Flood Control Project Maintenance  
Levee Inspections**

## Maintenance Issue Types Only, Levee Inspection Report By Mile - Spring 2019

### Brannan Andrus Levee Maintenance District

Waterway	Bank	Unit Miles	Inspection Start/End	Inspector
Unit No. 02 Sacramento River	Left	11.54	04/26/2019 04/26/2019	David Julian

LM Start	7.04	Rating **	M	Issue No.	159
LM End	7.11	Issue Type +	Ma	Location *	LS
Category	Earthen Levee			GPS Latitude/Longitude	
				Start	End
Item	Vegetation			38.165755 °	38.164730 °
				-121.670675 °	-121.671105 °
DWR ID	DWR_NA0002_02_f_2018_159				
Comment Code					
V2 : Remove the wild growth other than native grasses from the levee slopes.					
Inspector Comment					
Remove the ground cover on the landside slope.					

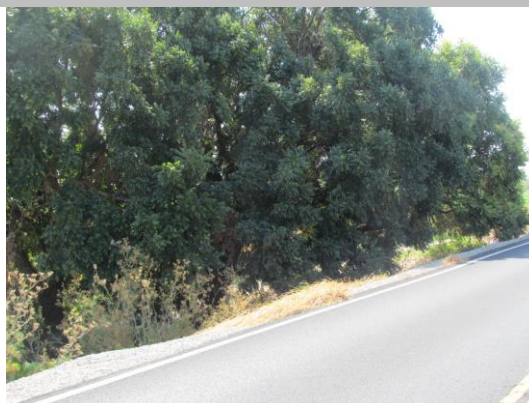
Photo 1 of 1 : SP\_2019\_NA0002\_63\_159\_20190311\_00095.jpg



View looking upstream at ivy on the landside slope (October 2018).

LM Start	7.13	Rating **	M	Issue No.	112
LM End	7.13	Issue Type +	Ma	Location *	LS
Category	Earthen Levee			GPS Latitude/Longitude	
				Start	End
Item	Trim / Thin Trees			38.164465 °	38.164465 °
				-121.671292 °	-121.671292 °
DWR ID	DWR_NA0002_02_f_2015_112				
Comment Code					
T1 : Trim trees to at least five feet above ground level.					
Inspector Comment					

Photo 1 of 1 : SP\_2019\_NA0002\_63\_112\_20190311\_00068.jpg



Looking south at untrimmed trees on landward slope.

LM Start	7.17	Rating **	C	Issue No.	141
LM End	7.20	Issue Type +	Ma	Location *	WS
Category	Earthen Levee			GPS Latitude/Longitude	
				Start	End
Item	Vegetation			38.163968 °	38.163510 °
				-121.671487 °	-121.671738 °
DWR ID	DWR_NA0002_02_f_2018_141				
Comment Code					
V2 : Remove the wild growth other than native grasses from the levee slopes.					
Inspector Comment					

No Photos

* Location		** Rating		+ Issue Type	
LS : Land Side	N/A : Not Applicable	A : Acceptable	N : Not Inspected/Rated	Ma : Maintenance Deficiency	
WS : Water Side		M : Minimally Acceptable	C : Corrected	Ob : Design & System Obsolescence	
CR : Crown		U : Unacceptable	A/W : Acceptable but Monitor & Maintain	En : Enforcement	

**Flood Control Project Maintenance  
Levee Inspections**

## Maintenance Issue Types Only, Levee Inspection Report By Mile - Spring 2019

### Brannan Andrus Levee Maintenance District

Waterway	Bank	Unit Miles	Inspection Start/End	Inspector
Unit No. 02 Sacramento River	Left	11.54	04/26/2019 04/26/2019	David Julian

LM Start	7.26	Rating **	M	Issue No.	104
LM End	7.26	Issue Type +	Ma	Location *	WS
Category	Earthen Levee			GPS Latitude/Longitude	
				Start	End
Item	Trim / Thin Trees			38.162735 °	38.162735 °
				-121.672224 °	-121.672224 °
DWR ID	DWR_NA0002_02_f_2017_104				
Comment Code					
T2 : Thin trees to allow visibility of the ground and room to flood fight.					
Inspector Comment					

No Photos

LM Start	7.56	Rating **	U	Issue No.	90	
LM End	7.56	Issue Type +	Ma	Location *	LS	
Category	Earthen Levee			GPS Latitude/Longitude		
				Start	End	
Item	Slope Stability			38.159078 °	38.159078 °	
				-121.675173 °	-121.675173 °	
DWR ID	DWR_NA0002_02_s_2019_90					
Comment Code						
S1 : Repair slope instability.						
Inspector Comment						
Slope instability causing edge of road to crack and slip.						

Photo 1 of 1 : SP\_2019\_NA0002\_63\_90\_20190429\_00204.jpg



View of small slip on the landside shoulder causing the edge of the road to crack and sink (Spring 2019).

<b>* Location</b> LS : Land Side    N/A : Not Applicable WS : Water Side CR : Crown		<b>** Rating</b> A : Acceptable                      N : Not Inspected/Rated M : Minimally Acceptable        C : Corrected U : Unacceptable                  A/W : Acceptable but Monitor & Maintain		<b>+ Issue Type</b> Ma : Maintenance Deficiency Ob : Design & System Obsolescence En : Enforcement
--	--	---	--	---



**Flood Control Project Maintenance  
Levee Inspections**

## Maintenance Issue Types Only, Levee Inspection Report By Mile - Spring 2019

### Brannan Andrus Levee Maintenance District

Waterway	Bank	Unit Miles	Inspection Start/End	Inspector
Unit No. 02 Sacramento River	Left	11.54	04/26/2019 04/26/2019	David Julian

LM Start	7.62	Rating **	U	Issue No.	65
LM End	8.23	Issue Type +	Ma	Location *	LS
Category	Earthen Levee			GPS Latitude/Longitude	
				Start	End
Item	Vegetation			38.158491 °	38.151358 °
				-121.675988 °	-121.681980 °
DWR ID	DWR_NA0002_02_s_2019_65				
Comment Code					
V1 : Control annual grass and weeds on the levee slopes and easements.					
Inspector Comment					
Maintain the annual vegetation.					

Photo 1 of 1 : SP\_2019\_NA0002\_63\_65\_20190429\_00196.jpg



View looking downstream annual vegetation on the landside slope (Spring 2019).

LM Start	7.67	Rating **	C	Issue No.	143
LM End	7.67	Issue Type +	Ma	Location *	WS
Category	Earthen Levee			GPS Latitude/Longitude	
				Start	End
Item	Vegetation			38.158183 °	38.158183 °
				-121.676788 °	-121.676788 °
DWR ID	DWR_NA0002_02_f_2018_143				
Comment Code					
V1 : Control annual grass and weeds on the levee slopes and easements.					
Inspector Comment					

No Photos

LM Start	7.71	Rating **	M	Issue No.	105
LM End	7.71	Issue Type +	Ma	Location *	WS
Category	Earthen Levee			GPS Latitude/Longitude	
				Start	End
Item	Encroachments			38.157841 °	38.157841 °
				-121.677510 °	-121.677510 °
DWR ID	DWR_NA0002_02_s_2019_105				
Comment Code					
TR : Tree or limb					
Inspector Comment					
There are tree limbs on the waterside shoulder.					

Photo 1 of 1 : SP\_2019\_NA0002\_63\_105\_20190311\_00063.jpg



Looking southwest at tree limbs on waterward shoulder.

* Location		** Rating		+ Issue Type	
LS : Land Side	N/A : Not Applicable	A : Acceptable	N : Not Inspected/Rated	Ma : Maintenance Deficiency	
WS : Water Side		M : Minimally Acceptable	C : Corrected	Ob : Design & System Obsolescence	
CR : Crown		U : Unacceptable	A/W : Acceptable but Monitor & Maintain	En : Enforcement	

**Flood Control Project Maintenance  
Levee Inspections**

**Maintenance Issue Types Only, Levee Inspection Report By Mile - Spring 2019**

**Brannan Andrus Levee Maintenance District**

Waterway	Bank	Unit Miles	Inspection Start/End	Inspector
Unit No. 02 Sacramento River	Left	11.54	04/26/2019 04/26/2019	David Julian

LM Start	7.94	Rating **	U	Issue No.	64
LM End	7.94	Issue Type +	Ma	Location *	LS
Category	Earthen Levee			GPS Latitude/Longitude	
				Start	End
Item	Encroachments			38.155353 °	38.155353 °
				-121.680090 °	-121.680090 °
DWR ID	DWR_NA0002_02_s_2019_64				
Comment Code					
TR : Tree or limb					
Inspector Comment					
Remove tree branches from the landside shoulder.					

Photo 1 of 1 : SP\_2019\_NA0002\_63\_64\_20190429\_00195.jpg



View of tree limbs on the landside shoulder (Spring 2019).

LM Start	7.97	Rating **	M	Issue No.	147
LM End	7.97	Issue Type +	Ma	Location *	WS
Category	Earthen Levee			GPS Latitude/Longitude	
				Start	End
Item	Slope Stability			38.155007 °	38.155007 °
				-121.680353 °	-121.680353 °
DWR ID	DWR_NA0002_02_f_2018_147				
Comment Code					
S2 : Repair the levee slope damaged by foot traffic and prevent access where possible.					
Inspector Comment					
There is a path down the waterside slope.					

Photo 1 of 1 : SP\_2019\_NA0002\_63\_147\_20190311\_00088.jpg



View of path that is cutting into the waterside slope (October 2018).

LM Start	8.01	Rating **	M	Issue No.	148
LM End	8.01	Issue Type +	Ma	Location *	WS
Category	Earthen Levee			GPS Latitude/Longitude	
				Start	End
Item	Trim / Thin Trees			38.154410 °	38.154410 °
				-121.680587 °	-121.680587 °
DWR ID	DWR_NA0002_02_f_2018_148				
Comment Code					
T2 : Thin trees to allow visibility of the ground and room to flood fight.					
Inspector Comment					

No Photos

* Location LS : Land Side    N/A : Not Applicable WS : Water Side CR : Crown		** Rating A : Acceptable M : Minimally Acceptable U : Unacceptable		N : Not Inspected/Rated C : Corrected A/W : Acceptable but Monitor & Maintain		+ Issue Type Ma : Maintenance Deficiency Ob : Design & System Obsolescence En : Enforcement	
---	--	---	--	---	--	--	--

**Flood Control Project Maintenance  
Levee Inspections**

**Maintenance Issue Types Only, Levee Inspection Report By Mile - Spring 2019**

**Brannan Andrus Levee Maintenance District**

Waterway	Bank	Unit Miles	Inspection Start/End	Inspector
Unit No. 02 Sacramento River	Left	11.54	04/26/2019 04/26/2019	David Julian

LM Start	8.06	Rating **	U	Issue No.	145
LM End	8.17	Issue Type +	Ma	Location *	LS
Category	Earthen Levee			GPS Latitude/Longitude	
				Start	End
Item	Vegetation			38.153760 °	38.152197 °
				-121.680967 °	-121.681713 °
DWR ID	DWR_NA0002_02_f_2018_145				
Comment Code					
V1 : Control annual grass and weeds on the levee slopes and easements.					
Inspector Comment					
Maintain vegetation on the landside slope.					

Photo 1 of 1 : SP\_2019\_NA0002\_63\_145\_20190311\_00087.jpg



View looking upstream at vegetation on the landside shoulder and slope (October 2018).

LM Start	8.20	Rating **	U	Issue No.	70
LM End	8.42	Issue Type +	Ma	Location *	WS
Category	Supplemental			GPS Latitude/Longitude	
				Start	End
Item	2017 USACE Erosion Survey, DRAFT			38.151867 °	38.148711 °
				-121.682201 °	-121.682790 °
DWR ID	DWR_NA0002_02_f_2018_70				
Comment Code					
Inspector Comment					
2017 Site ID: SAC 12.1 L					
Status: Critical					
2017 Field Notes: Continues to worsen and threaten the road.					
Site History: 2010 - Small inlet area behind a man-built spit. Bank is slumping and could possibly be fixed with maintenance. 2011 - Site continues to worsen. 2015 - Upgraded to CRITICAL. 2016 - Site continues to get worse.					
2018: Still threatening roadway. Remain critical					

Photo 1 of 1 : SP\_2019\_NA0002\_63\_70\_20190311\_00033.jpg



USACE 2013 Photo #1

* Location LS : Land Side    N/A : Not Applicable WS : Water Side CR : Crown		** Rating A : Acceptable M : Minimally Acceptable U : Unacceptable N : Not Inspected/Rated C : Corrected A/W : Acceptable but Monitor & Maintain		+ Issue Type Ma : Maintenance Deficiency Ob : Design & System Obsolescence En : Enforcement	
---	--	--	--	--	--



**Flood Control Project Maintenance  
Levee Inspections**

## Maintenance Issue Types Only, Levee Inspection Report By Mile - Spring 2019

### Brannan Andrus Levee Maintenance District

Waterway	Bank	Unit Miles	Inspection Start/End	Inspector
Unit No. 02 Sacramento River	Left	11.54	04/26/2019 04/26/2019	David Julian

LM Start	8.31	Rating **	M	Issue No.	73
LM End	9.19	Issue Type +	Ma	Location *	LS
Category	Earthen Levee			GPS Latitude/Longitude	
				Start	End
Item	Vegetation			38.150202 °	38.138020 °
				-121.682138 °	-121.686154 °
DWR ID	DWR_NA0002_02_s_2019_73				
Comment Code					
V1 : Control annual grass and weeds on the levee slopes and easements.					
Inspector Comment					
Maintain annual vegetation all the way down slope along the highway south of eucalyptus trees.					

No Photos

LM Start	8.34	Rating **	M	Issue No.	151
LM End	8.37	Issue Type +	Ma	Location *	WS
Category	Earthen Levee			GPS Latitude/Longitude	
				Start	End
Item	Trim / Thin Trees			38.149773 °	38.149383 °
				-121.682335 °	-121.682392 °
DWR ID	DWR_NA0002_02_f_2018_151				
Comment Code					
T2 : Thin trees to allow visibility of the ground and room to flood fight.					
Inspector Comment					

No Photos

LM Start	8.35	Rating **	U	Issue No.	158
LM End	8.35	Issue Type +	Ma	Location *	LS
Category	Earthen Levee			GPS Latitude/Longitude	
				Start	End
Item	Encroachments			38.149698 °	38.149698 °
				-121.682255 °	-121.682255 °
DWR ID	DWR_NA0002_02_f_2018_158				
Comment Code					
TR : Tree or limb					
Inspector Comment					
Remove the downed tree from landside slope.					

Photo 1 of 1 : SP\_2019\_NA0002\_63\_158\_20190311\_00094.jpg



View of down tree on landside slope (October 2018).

* Location LS : Land Side    N/A : Not Applicable WS : Water Side CR : Crown		** Rating A : Acceptable M : Minimally Acceptable U : Unacceptable		N : Not Inspected/Rated C : Corrected A/W : Acceptable but Monitor & Maintain		+ Issue Type Ma : Maintenance Deficiency Ob : Design & System Obsolescence En : Enforcement	
---	--	---	--	---	--	--	--

**Flood Control Project Maintenance  
Levee Inspections**

## Maintenance Issue Types Only, Levee Inspection Report By Mile - Spring 2019

### Brannan Andrus Levee Maintenance District

Waterway	Bank	Unit Miles	Inspection Start/End	Inspector
Unit No. 02 Sacramento River	Left	11.54	04/26/2019 04/26/2019	David Julian

LM Start	8.38	Rating **	U	Issue No.	157
LM End	8.38	Issue Type +	Ma	Location *	LS
Category	Earthen Levee			GPS Latitude/Longitude	
				Start	End
Item	Encroachments			38.149218 °	38.149218 °
				-121.682315 °	-121.682315 °
DWR ID	DWR_NA0002_02_f_2018_157				
Comment Code					
TR : Tree or limb					
Inspector Comment					
Remove the downed tree from the landside slope.					

Photo 1 of 1 : SP\_2019\_NA0002\_63\_157\_20190311\_00093.jpg



View of down tree on landside slope (October 2018).

LM Start	8.45	Rating **	C	Issue No.	156
LM End	8.51	Issue Type +	Ma	Location *	LS
Category	Earthen Levee			GPS Latitude/Longitude	
				Start	End
Item	Trim / Thin Trees			38.148193 °	38.147415 °
				-121.682527 °	-121.682627 °
DWR ID	DWR_NA0002_02_f_2018_156				
Comment Code					
T2 : Thin trees to allow visibility of the ground and room to flood fight.					
Inspector Comment					
Trim and Thin trees to allow inspection of landside slope.					

No Photos

LM Start	8.72	Rating **	C	Issue No.	155
LM End	8.72	Issue Type +	Ma	Location *	LS
Category	Earthen Levee			GPS Latitude/Longitude	
				Start	End
Item	Trim / Thin Trees			38.144415 °	38.144415 °
				-121.683290 °	-121.683290 °
DWR ID	DWR_NA0002_02_f_2018_155				
Comment Code					
T2 : Thin trees to allow visibility of the ground and room to flood fight.					
Inspector Comment					

No Photos

* Location LS : Land Side    N/A : Not Applicable WS : Water Side CR : Crown		** Rating A : Acceptable M : Minimally Acceptable U : Unacceptable		N : Not Inspected/Rated C : Corrected A/W : Acceptable but Monitor & Maintain		+ Issue Type Ma : Maintenance Deficiency Ob : Design & System Obsolescence En : Enforcement	
---	--	---	--	---	--	--	--

**Flood Control Project Maintenance  
Levee Inspections**

## Maintenance Issue Types Only, Levee Inspection Report By Mile - Spring 2019

### Brannan Andrus Levee Maintenance District

Waterway	Bank	Unit Miles	Inspection Start/End	Inspector
Unit No. 02 Sacramento River	Left	11.54	04/26/2019 04/26/2019	David Julian

LM Start	8.96	Rating **	U	Issue No.	69
LM End	9.31	Issue Type +	Ma	Location *	WS
Category	Supplemental			GPS Latitude/Longitude	
				Start	End
Item	2017 USACE Erosion Survey, DRAFT			38.141399 °	38.136244 °
				-121.685346 °	-121.686170 °
DWR ID	DWR_NA0002_02_f_2018_69				
Comment Code					
Inspector Comment					
2017 Site ID: SAC 11.2 L					
Status: Critical					
2017 Field Notes: New slump section. Erosion under the road has enlarged.					
Site History: 2008 - Erosion causing vertical bank at the highway on top of levee. The whole bank along the highway should be repaired. 2009 - Minimal new erosion. 2011 - Bank continues to slowly erode. 2012 - Upgrade to critical, new erosion since lat year and steeper slopes in sections. 2015 - Road foundation and cables exposed. Extremely large tree with exposed roots looks likely to fail and take out a significant portion of the levee. 2016 - Site continues to erode.					

Photo 1 of 1 : SP\_2019\_NA0002\_63\_69\_20190311\_00032.jpg



USACE 2013 Photo #1

LM Start	8.97	Rating **	M	Issue No.	28
LM End	10.18	Issue Type +	Ma	Location *	LS
Category	Earthen Levee			GPS Latitude/Longitude	
				Start	End
Item	Vegetation			38.141002 °	38.124229 °
				-121.684934 °	-121.690016 °
DWR ID	DWR_NA0002_02_s_2019_28				
Comment Code					
V1 : Control annual grass and weeds on the levee slopes and easements.					
Inspector Comment					
Maintain annual vegetation all the way down the landside slope.					

Photo 1 of 1 : SP\_2019\_NA0002\_63\_28\_20190429\_00202.jpg



View looking upstream at annual vegetation on the bottom half of the landside slope (Spring 2019).

<b>* Location</b> LS : Land Side    N/A : Not Applicable WS : Water Side CR : Crown	<b>** Rating</b> A : Acceptable M : Minimally Acceptable U : Unacceptable	N : Not Inspected/Rated C : Corrected A/W : Acceptable but Monitor & Maintain	<b>+ Issue Type</b> Ma : Maintenance Deficiency Ob : Design & System Obsolescence En : Enforcement
--	--	---	---



**Flood Control Project Maintenance  
Levee Inspections**

## Maintenance Issue Types Only, Levee Inspection Report By Mile - Spring 2019

### Brannan Andrus Levee Maintenance District

Waterway	Bank	Unit Miles	Inspection Start/End	Inspector
Unit No. 02 Sacramento River	Left	11.54	04/26/2019 04/26/2019	David Julian

LM Start	9.06	Rating **	U	Issue No.	152
LM End	9.06	Issue Type +	Ma	Location *	WS
Category	Earthen Levee			GPS Latitude/Longitude	
				Start	End
Item	Vegetation			38.139863 °	38.139862 °
				-121.685617 °	-121.685620 °
DWR ID	DWR_NA0002_02_f_2018_152				
Comment Code					
V2 : Remove the wild growth other than native grasses from the levee slopes.					
Inspector Comment					
Remove arundo from the waterside slope.					

Photo 1 of 1 : SP\_2019\_NA0002\_63\_152\_20190311\_00091.jpg



View of arundo on waterside slope (October 2018).

LM Start	9.15	Rating **	U	Issue No.	153
LM End	9.15	Issue Type +	Ma	Location *	WS
Category	Earthen Levee			GPS Latitude/Longitude	
				Start	End
Item	Vegetation			38.138625 °	38.138625 °
				-121.686138 °	-121.686138 °
DWR ID	DWR_NA0002_02_f_2018_153				
Comment Code					
V2 : Remove the wild growth other than native grasses from the levee slopes.					
Inspector Comment					
Remove arundo.					

Photo 1 of 1 : SP\_2019\_NA0002\_63\_153\_20190311\_00092.jpg



View of arundo on waterside slope (October 2018).

LM Start	9.19	Rating **	U	Issue No.	72
LM End	9.22	Issue Type +	Ma	Location *	LS
Category	Earthen Levee			GPS Latitude/Longitude	
				Start	End
Item	Trim / Thin Trees			38.138004 °	38.137545 °
				-121.686157 °	-121.686210 °
DWR ID	DWR_NA0002_02_s_2019_72				
Comment Code					
T2 : Thin trees to allow visibility of the ground and room to flood fight.					
Inspector Comment					
Trim fig trees on the landside toe.					

Photo 1 of 1 : SP\_2019\_NA0002\_63\_72\_20190429\_00201.jpg



View looking downslope at fig tree on the landside slope (Spring 2019).

<b>* Location</b> LS : Land Side    N/A : Not Applicable WS : Water Side CR : Crown		<b>** Rating</b> A : Acceptable M : Minimally Acceptable U : Unacceptable		N : Not Inspected/Rated C : Corrected A/W : Acceptable but Monitor & Maintain		<b>+ Issue Type</b> Ma : Maintenance Deficiency Ob : Design & System Obsolescence En : Enforcement	
--	--	--	--	---	--	---	--

**Flood Control Project Maintenance  
Levee Inspections**

## Maintenance Issue Types Only, Levee Inspection Report By Mile - Spring 2019

### Brannan Andrus Levee Maintenance District

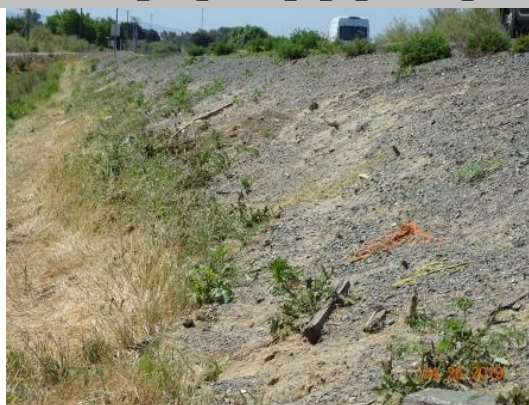
Waterway	Bank	Unit Miles	Inspection Start/End	Inspector
Unit No. 02 Sacramento River	Left	11.54	04/26/2019 04/26/2019	David Julian

LM Start	9.24	Rating **	C	Issue No.	118
LM End	9.27	Issue Type +	Ma	Location *	WS
Category	Earthen Levee			GPS Latitude/Longitude	
				Start	End
Item	Vegetation			38.137189 °	38.136837 °
				-121.686302 °	-121.686273 °
DWR ID	DWR_NA0002_02_f_2017_118				
Comment Code					
V2 : Remove the wild growth other than native grasses from the levee slopes.					
Inspector Comment					

No Photos

LM Start	9.27	Rating **	U	Issue No.	67
LM End	10.03	Issue Type +	Ma	Location *	LS
Category	Earthen Levee			GPS Latitude/Longitude	
				Start	End
Item	Animal Control			38.136815 °	38.126291 °
				-121.686161 °	-121.688959 °
DWR ID	DWR_NA0002_02_s_2019_67				
Comment Code					
A1 : Exterminate rodents and backfill and compact or grout burrows.					
Inspector Comment					
There is major ground squirrel burrowing activity along this stretch. The LMA is aware of rock piles near the levee toe and says that is the source of the rodents.					

Photo 1 of 2 : SP\_2019\_NA0002\_63\_67\_20190429\_00199.jpg



View looking downstream at animal holes on the landside slope (Spring 2019).

LM Start	<b>9.27</b>	Rating **	U	Issue No.	<b>67 (cont)</b>
LM End	<b>10.03</b>	Issue Type +	Ma	Location *	LS

Photo 2 of 2 : SP\_2019\_NA0002\_63\_67\_20190429\_00200.jpg



View looking downstream at animal holes on the landside slope (Spring 2019).

* Location LS : Land Side    N/A : Not Applicable WS : Water Side CR : Crown		** Rating A : Acceptable M : Minimally Acceptable U : Unacceptable		N : Not Inspected/Rated C : Corrected A/W : Acceptable but Monitor & Maintain		+ Issue Type Ma : Maintenance Deficiency Ob : Design & System Obsolescence En : Enforcement	
---	--	---	--	---	--	--	--

**Flood Control Project Maintenance  
Levee Inspections**

## Maintenance Issue Types Only, Levee Inspection Report By Mile - Spring 2019

### Brannan Andrus Levee Maintenance District

Waterway	Bank	Unit Miles	Inspection Start/End	Inspector
Unit No. 02 Sacramento River	Left	11.54	04/26/2019 04/26/2019	David Julian

LM Start	9.31	Rating **	C	Issue No.	154
LM End	9.31	Issue Type +	Ma	Location *	WS
Category	Earthen Levee			GPS Latitude/Longitude	
				Start	End
Item	Vegetation			38.136277 °	38.136277 °
				-121.686238 °	-121.686238 °
DWR ID	DWR_NA0002_02_f_2018_154				
Comment Code					
V2 : Remove the wild growth other than native grasses from the levee slopes.					
Inspector Comment					
Remove arundo					

No Photos

LM Start	9.38	Rating **	U	Issue No.	63
LM End	9.38	Issue Type +	Ma	Location *	WS
Category	Earthen Levee			GPS Latitude/Longitude	
				Start	End
Item	Vegetation			38.135251 °	38.135251 °
				-121.686131 °	-121.686131 °
DWR ID	DWR_NA0002_02_s_2019_63				
Comment Code					
V2 : Remove the wild growth other than native grasses from the levee slopes.					
Inspector Comment					
Remove arundo.					

Photo 1 of 1 : SP\_2019\_NA0002\_63\_63\_20190429\_00197.jpg



View of arundo on the waterside slope (Spring 2019).

LM Start	9.71	Rating **	U	Issue No.	16
LM End	9.71	Issue Type +	Ma	Location *	WS
Category	Earthen Levee			GPS Latitude/Longitude	
				Start	End
Item	Vegetation			38.130580 °	38.130580 °
				-121.686730 °	-121.686730 °
DWR ID	DWR_NA0002_02_s_2019_16				
Comment Code					
V2 : Remove the wild growth other than native grasses from the levee slopes.					
Inspector Comment					
Remove arundo on the waterside slope.					

Photo 1 of 1 : SP\_2019\_NA0002\_63\_16\_20190429\_00198.jpg



View of arundo on the waterside slope (Spring 2019).

<b>* Location</b> LS : Land Side    N/A : Not Applicable WS : Water Side CR : Crown		<b>** Rating</b> A : Acceptable M : Minimally Acceptable U : Unacceptable		N : Not Inspected/Rated C : Corrected A/W : Acceptable but Monitor & Maintain		<b>+ Issue Type</b> Ma : Maintenance Deficiency Ob : Design & System Obsolescence En : Enforcement	
--	--	--	--	---	--	---	--



**Flood Control Project Maintenance  
Levee Inspections**

## Maintenance Issue Types Only, Levee Inspection Report By Mile - Spring 2019

### Brannan Andrus Levee Maintenance District

Waterway	Bank	Unit Miles	Inspection Start/End	Inspector
Unit No. 02 Sacramento River	Left	11.54	04/26/2019 04/26/2019	David Julian

LM Start	9.78	Rating **	M	Issue No.	68
LM End	9.93	Issue Type +	Ma	Location *	WS
Category	Supplemental			GPS Latitude/Longitude	
				Start	End
Item	2017 USACE Erosion Survey, DRAFT			38.129722 °	38.127672 °
				-121.687468 °	-121.688646 °
DWR ID	DWR_NA0002_02_f_2018_68				
Comment Code					
Inspector Comment					
2017 Site ID: SAC 10.8 L					
Status: Eroding					
2017 Field Notes: Lots of new woody debris recruitment.					
Site History: 2004 - Wave wash pockets approximately 100 ft long with new full bank rock between the pockets. 2005 - Spot repairs, but toe is still eroding in several places. 2006 - Low vertical bank along roadway. 2007 - A PL 84-99 repair was constructed, it cover the majority of the site with the exception of the upstream 150 to 200 ft and the downstream 250 ft, therefore it is being kept in the inventory. 2009 - Minimal new erosion. 2010 - Outboard berm looks good, but the banks are still very steep. 2011 - While the outboard berm is protecting against wave wash, bank still has slumping issues.					

Photo 1 of 1 : SP\_2019\_NA0002\_63\_68\_20190311\_00031.jpg



USACE 2013 Photo #1

LM Start	10.26	Rating **	U	Issue No.	107
LM End	11.10	Issue Type +	Ma	Location *	WS
Category	Earthen Levee			GPS Latitude/Longitude	
				Start	End
Item	Vegetation			38.123119 °	38.112414 °
				-121.690488 °	-121.697904 °
DWR ID	DWR_NA0002_02_f_2014_107				
Comment Code					
V2 : Remove the wild growth other than native grasses from the levee slopes.					
Inspector Comment					
There is vegetation on the waterside slope.					

Photo 1 of 2 : SP\_2019\_NA0002\_63\_107\_20190311\_00065.jpg



Looking south at arundo and other vegetation on waterward slope. (Fall 2016)

<b>* Location</b> LS : Land Side    N/A : Not Applicable WS : Water Side CR : Crown	<b>** Rating</b> A : Acceptable M : Minimally Acceptable U : Unacceptable	N : Not Inspected/Rated C : Corrected A/W : Acceptable but Monitor & Maintain	<b>+ Issue Type</b> Ma : Maintenance Deficiency Ob : Design & System Obsolescence En : Enforcement
--	--	---	---

**Flood Control Project Maintenance  
Levee Inspections**

## Maintenance Issue Types Only, Levee Inspection Report By Mile - Spring 2019

### Brannan Andrus Levee Maintenance District

Waterway	Bank	Unit Miles	Inspection Start/End	Inspector
Unit No. 02 Sacramento River	Left	11.54	04/26/2019 04/26/2019	David Julian

LM Start	10.26	Rating **	U	Issue No.	107 (cont)	
LM End	11.10	Issue Type +	Ma	Location *	WS	
Category	Earthen Levee			GPS Latitude/Longitude		
				Start		End
Item	Vegetation			38.123119 °		38.112414 °
				-121.690488 °		-121.697904 °
DWR ID	DWR_NA0002_02_f_2014_107					
Comment Code						
V2 : Remove the wild growth other than native grasses from the levee slopes.						
Inspector Comment						
There is vegetation on the waterside slope.						

Photo 2 of 2 : SP\_2019\_NA0002\_63\_107\_20190311\_00066.jpg



Looking south at dense vegetation on waterward slope. (Fall 2015)

LM Start	10.74	Rating **	M	Issue No.	119
LM End	10.74	Issue Type +	Ma	Location *	WS
Category	Earthen Levee			GPS Latitude/Longitude	
				Start	End
Item	Erosion / Bank Caving			38.116906 °	38.116906 °
				-121.694595 °	-121.694595 °
DWR ID	DWR_NA0002_02_f_2017_119				
Comment Code					
E2 : Schedule repair of erosion site prior to the next inspection.					
Inspector Comment					

Photo 1 of 1 : SP\_2019\_NA0002\_63\_119\_20190311\_00073.jpg



Looking northwest at the waterside slope.

* Location LS : Land Side    N/A : Not Applicable WS : Water Side CR : Crown		** Rating A : Acceptable M : Minimally Acceptable U : Unacceptable N : Not Inspected/Rated C : Corrected A/W : Acceptable but Monitor & Maintain		+ Issue Type Ma : Maintenance Deficiency Ob : Design & System Obsolescence En : Enforcement	
---	--	--	--	--	--