

**Flood Control Project Maintenance
Levee Inspections**

Maintenance Issue Types Only, Levee Inspection Report By Mile - Spring 2018

Brannan Andrus Levee Maintenance District

Waterway	Bank	Unit Miles	Inspection Start/End	Inspector
Unit No. 01 Georgiana Slough	Right	6.01	04/05/2018 04/05/2018	Keith Millard

LM Start		Rating **	A	Issue No.	27
LM End		Issue Type +	Ma	Location *	N/A
Category	Earthen Levee		GPS Latitude/Longitude		
			Start	End	
Item	Flood Preparedness & Training			°	°
				°	°
DWR ID	DWR_NA0002_01_s _ 2012_27				
Comment Code					
Inspector Comment					
LMA is prepared to respond to a flood emergency.					

No Photos

LM Start		Rating **	A	Issue No.	32
LM End		Issue Type +	Ma	Location *	N/A
Category	Earthen Levee		GPS Latitude/Longitude		
			Start	End	
Item	Operations & Maintenance Manuals			°	°
				°	°
DWR ID	DWR_NA0002_01_s _ 2013_32				
Comment Code					
Inspector Comment					
The LMA maintains a copy of the O&M manual on file at district office.					

No Photos

* Location LS : Land Side N/A : Not Applicable WS : Water Side CR : Crown	** Rating A : Acceptable M : Minimally Acceptable U : Unacceptable	N : Not Inspected/Rated C : Corrected A/W : Acceptable but Monitor & Maintain	+ Issue Type Ma : Maintenance Deficiency Ob : Design & System Obsolescence En : Enforcement
--	--	---	---

**Flood Control Project Maintenance
Levee Inspections**

Maintenance Issue Types Only, Levee Inspection Report By Mile - Spring 2018

Brannan Andrus Levee Maintenance District

Waterway	Bank	Unit Miles	Inspection Start/End	Inspector
Unit No. 01 Georgiana Slough	Right	6.01	04/05/2018 04/05/2018	Keith Millard

LM Start		Rating **	A	Issue No.	33		
LM End		Issue Type +	Ma	Location *	N/A		
Category	Earthen Levee			GPS Latitude/Longitude			
				Start		End	
Item	Emergency Supplies & Equipment				°		°
					°		°
DWR ID	DWR_NA0002_01_s_2013_33						
Comment Code							
Inspector Comment							
LMA maintains an adequate amount of flood fight supplies and equipment for flood response.							

No Photos

LM Start	0.02	Rating **	M	Issue No.	43
LM End	2.25	Issue Type +	Ma	Location *	LS
Category	Earthen Levee			GPS Latitude/Longitude	
				Start	End
Item	Vegetation			38.186345 °	38.163432 °
				-121.562957 °	-121.584426 °
DWR ID	DWR_NA0002_01_f_2017_43				
Comment Code					
V1 : Control annual grass and weeds on the levee slopes and easements.					
Inspector Comment					

Photo 1 of 1 : SP_2018_NA0002_62_43_20180305_00031.jpg



Looking northeast at the landside slope.

LM Start	0.02	Rating **	M	Issue No.	53
LM End	2.29	Issue Type +	Ma	Location *	WS
Category	Earthen Levee			GPS Latitude/Longitude	
				Start	End
Item	Vegetation			38.186344 °	38.162909 °
				-121.562959 °	-121.584706 °
DWR ID	DWR_NA0002_01_s_2018_53				
Comment Code					
V1 : Control annual grass and weeds on the levee slopes and easements.					
Inspector Comment					

Photo 1 of 1 : SP_2018_NA0002_62_53_20180409_00107.jpg



Waterside vegetation should be reduced to 20' from crown.

* Location
LS : Land Side N/A : Not Applicable
WS : Water Side
CR : Crown

** Rating
A : Acceptable N : Not Inspected/Rated
M : Minimally Acceptable C : Corrected
U : Unacceptable A/W : Acceptable but Monitor & Maintain

+ Issue Type
Ma : Maintenance Deficiency
Ob : Design & System Obsolescence
En : Enforcement

**Flood Control Project Maintenance
Levee Inspections**

Maintenance Issue Types Only, Levee Inspection Report By Mile - Spring 2018

Brannan Andrus Levee Maintenance District

Waterway	Bank	Unit Miles	Inspection Start/End	Inspector
Unit No. 01 Georgiana Slough	Right	6.01	04/05/2018 04/05/2018	Keith Millard

LM Start	1.52	Rating **	M	Issue No.	56
LM End	1.52	Issue Type +	Ma	Location *	WS
Category	Earthen Levee			GPS Latitude/Longitude	
				Start	End
Item	Erosion / Bank Caving			38.173475 °	38.173475 °
				-121.580767 °	-121.580767 °
DWR ID	DWR_NA0002_01_s _ 2018_56				
Comment Code					
E2 : Schedule repair of erosion site prior to the next inspection.					
Inspector Comment					
Scallop erosion, 10 ft long. This scallop has received riprap in the past along with adjacent scallops. However this scallop has slumped again since then leaving exposed vertical soil above the slumped riprap. Should be repaired.					

Photo 1 of 2 : SP_2018_NA0002_62_56_20180409_00108.jpg



Erosion slump in area of previous repair. LM 1.52

LM Start	1.52	Rating **	M	Issue No.	56 (cont)
LM End	1.52	Issue Type +	Ma	Location *	WS

Photo 2 of 2 : SP_2018_NA0002_62_56_20180410_00114.jpg



Erosion slump in area of previous repair. LM 1.52

LM Start	1.56	Rating **	U	Issue No.	25
LM End	1.56	Issue Type +	Ma	Location *	LS
Category	Earthen Levee			GPS Latitude/Longitude	
				Start	End
Item	Trim / Thin Trees			38.172869 °	38.172869 °
				-121.580681 °	-121.580681 °
DWR ID	DWR_NA0002_01_s _ 2012_25				
Comment Code					
T1 : Trim trees to at least five feet above ground level.					
Inspector Comment					
Tree blocking landside toe.					

Photo 1 of 3 : SP_2018_NA0002_62_25_20180305_00021.jpg



Looking southwest at the landside slope.

*** Location**

LS : Land Side N/A : Not Applicable
WS : Water Side
CR : Crown

**** Rating**

A : Acceptable N : Not Inspected/Rated
M : Minimally Acceptable C : Corrected
U : Unacceptable A/W : Acceptable but Monitor & Maintain

+ Issue Type

Ma : Maintenance Deficiency
Ob : Design & System Obsolescence
En : Enforcement

**Flood Control Project Maintenance
Levee Inspections**

Maintenance Issue Types Only, Levee Inspection Report By Mile - Spring 2018

Brannan Andrus Levee Maintenance District

Waterway	Bank	Unit Miles	Inspection Start/End	Inspector
Unit No. 01 Georgiana Slough	Right	6.01	04/05/2018 04/05/2018	Keith Millard

LM Start	1.56	Rating **	U	Issue No.	25 (cont)	
LM End	1.56	Issue Type +	Ma	Location *	LS	
Category	Earthen Levee			GPS Latitude/Longitude		
				Start		End
Item	Trim / Thin Trees			38.172869 °		38.172869 °
				-121.580681 °		-121.580681 °
DWR ID	DWR_NA0002_01_s _ 2012_25					
Comment Code						
T1 : Trim trees to at least five feet above ground level.						
Inspector Comment						
Tree blocking landside toe.						

Photo 2 of 3 : SP_2018_NA0002_62_25_20180305_00022.jpg



Looking northwest at untrimmed tree at landward toe. (Spring 2015)

LM Start	1.56	Rating **	U	Issue No.	25 (cont)
LM End	1.56	Issue Type +	Ma	Location *	LS

Photo 3 of 3 : SP_2018_NA0002_62_25_20180305_00023.jpg



Looking west at untrimmed tree at landward toe. (Spring 2015)

LM Start	2.25	Rating **	M	Issue No.	6
LM End	2.25	Issue Type +	Ma	Location *	LS
Category	Earthen Levee			GPS Latitude/Longitude	
				Start	End
Item	Trim / Thin Trees			38.163460 °	38.163460 °
				-121.584406 °	-121.584406 °
DWR ID	DWR_NA0002_01_s _ 2012_6				
Comment Code					
T1 : Trim trees to at least five feet above ground level.					
Inspector Comment					

No Photos

* Location		** Rating		+ Issue Type	
LS : Land Side	N/A : Not Applicable	A : Acceptable	N : Not Inspected/Rated	Ma : Maintenance Deficiency	
WS : Water Side		M : Minimally Acceptable	C : Corrected	Ob : Design & System Obsolescence	
CR : Crown		U : Unacceptable	A/W : Acceptable but Monitor & Maintain	En : Enforcement	

**Flood Control Project Maintenance
Levee Inspections**

Maintenance Issue Types Only, Levee Inspection Report By Mile - Spring 2018

Brannan Andrus Levee Maintenance District

Waterway	Bank	Unit Miles	Inspection Start/End	Inspector
Unit No. 01 Georgiana Slough	Right	6.01	04/05/2018 04/05/2018	Keith Millard

LM Start	2.34	Rating **	M	Issue No.	72
LM End	2.34	Issue Type +	Ma	Location *	LS
Category	Earthen Levee			GPS Latitude/Longitude	
				Start	End
Item	Trim / Thin Trees			38.162242 °	38.162242 °
				-121.585058 °	-121.585058 °
DWR ID	DWR_NA0002_01_f_2016_72				
Comment Code					
T1 : Trim trees to at least five feet above ground level.					
Inspector Comment					

No Photos

LM Start	2.36	Rating **	M	Issue No.	7
LM End	2.36	Issue Type +	Ma	Location *	LS
Category	Earthen Levee			GPS Latitude/Longitude	
				Start	End
Item	Animal Control			38.162004 °	38.162004 °
				-121.585229 °	-121.585229 °
DWR ID	DWR_NA0002_01_s_2012_7				
Comment Code					
A3 : No rodents visible, but rodent burrows visible; need to backfill and compact or grout burrows.					
Inspector Comment					
Rodent colony exists under raised Tyler Island Bridge approach. Rodents should be exterminated and their holes backfilled.					

No Photos

LM Start	2.41	Rating **	U	Issue No.	28
LM End	2.49	Issue Type +	Ma	Location *	LS
Category	Earthen Levee			GPS Latitude/Longitude	
				Start	End
Item	Vegetation			38.161301 °	38.160281 °
				-121.585560 °	-121.586007 °
DWR ID	DWR_NA0002_01_s_2013_28				
Comment Code					
V2 : Remove the wild growth other than native grasses from the levee slopes.					
Inspector Comment					
Dense vegetation and wild roses on landside slope and toe.					

Photo 1 of 2 : SP_2018_NA0002_62_28_20180305_00024.jpg



Look west at dense vegetation at landward toe. (Spring 2016)

* Location		** Rating		+ Issue Type	
LS : Land Side	N/A : Not Applicable	A : Acceptable	N : Not Inspected/Rated	Ma : Maintenance Deficiency	
WS : Water Side		M : Minimally Acceptable	C : Corrected	Ob : Design & System Obsolescence	
CR : Crown		U : Unacceptable	A/W : Acceptable but Monitor & Maintain	En : Enforcement	

**Flood Control Project Maintenance
Levee Inspections**

Maintenance Issue Types Only, Levee Inspection Report By Mile - Spring 2018

Brannan Andrus Levee Maintenance District

Waterway	Bank	Unit Miles	Inspection Start/End	Inspector
Unit No. 01 Georgiana Slough	Right	6.01	04/05/2018 04/05/2018	Keith Millard

LM Start	2.41	Rating **	U	Issue No.	28 (cont)	
LM End	2.49	Issue Type +	Ma	Location *	LS	
Category	Earthen Levee			GPS Latitude/Longitude		
				Start		End
Item	Vegetation			38.161301 °		38.160281 °
				-121.585560 °		-121.586007 °
DWR ID	DWR_NA0002_01_s _ 2013_28					
Comment Code						
V2 : Remove the wild growth other than native grasses from the levee slopes.						
Inspector Comment						
Dense vegetation and wild roses on landside slope and toe.						

Photo 2 of 2 : SP_2018_NA0002_62_28_20180305_00025.jpg



Look west at dense vegetation at landward toe. (Fall 2016)

LM Start	2.41	Rating **	M	Issue No.	59
LM End	3.31	Issue Type +	Ma	Location *	WS
Category	Earthen Levee			GPS Latitude/Longitude	
				Start	End
Item	Vegetation			38.161300 °	38.152291 °
				-121.585560 °	-121.591575 °
DWR ID	DWR_NA0002_01_s _ 2018_59				
Comment Code					
V1 : Control annual grass and weeds on the levee slopes and easements.					
Inspector Comment					

No Photos

LM Start	2.49	Rating **	M	Issue No.	64
LM End	2.75	Issue Type +	Ma	Location *	LS
Category	Earthen Levee			GPS Latitude/Longitude	
				Start	End
Item	Vegetation			38.160161 °	38.157854 °
				-121.586074 °	-121.588860 °
DWR ID	DWR_NA0002_01_s _ 2018_64				
Comment Code					
V1 : Control annual grass and weeds on the levee slopes and easements.					
Inspector Comment					

No Photos

* Location		** Rating		+ Issue Type	
LS : Land Side	N/A : Not Applicable	A : Acceptable	N : Not Inspected/Rated	Ma : Maintenance Deficiency	
WS : Water Side		M : Minimally Acceptable	C : Corrected	Ob : Design & System Obsolescence	
CR : Crown		U : Unacceptable	A/W : Acceptable but Monitor & Maintain	En : Enforcement	

**Flood Control Project Maintenance
Levee Inspections**

Maintenance Issue Types Only, Levee Inspection Report By Mile - Spring 2018

Brannan Andrus Levee Maintenance District

Waterway	Bank	Unit Miles	Inspection Start/End	Inspector
Unit No. 01 Georgiana Slough	Right	6.01	04/05/2018 04/05/2018	Keith Millard

LM Start	2.58	Rating **	M	Issue No.	52
LM End	2.58	Issue Type +	Ma	Location *	LS
Category	Earthen Levee			GPS Latitude/Longitude	
				Start	End
Item	Trim / Thin Trees			38.158999 °	38.158999 °
				-121.586621 °	-121.586621 °
DWR ID	DWR_NA0002_01_f_2017_29				
Comment Code					
T1 : Trim trees to at least five feet above ground level.					
Inspector Comment					

No Photos

LM Start	2.60	Rating **	M	Issue No.	44
LM End	2.60	Issue Type +	Ma	Location *	CR
Category	Earthen Levee			GPS Latitude/Longitude	
				Start	End
Item	Crown Surface / Depressions / Rutting			38.158684 °	38.158684 °
				-121.586787 °	-121.586787 °
DWR ID	DWR_NA0002_01_f_2017_44				
Comment Code					
C3 : Add appropriate gravel or road base. Grade and compact.					
Inspector Comment					
Pothole in crown at pipe crossing					

No Photos

* Location LS : Land Side N/A : Not Applicable WS : Water Side CR : Crown		** Rating A : Acceptable N : Not Inspected/Rated M : Minimally Acceptable C : Corrected U : Unacceptable A/W : Acceptable but Monitor & Maintain		+ Issue Type Ma : Maintenance Deficiency Ob : Design & System Obsolescence En : Enforcement
--	--	---	--	---

**Flood Control Project Maintenance
Levee Inspections**

Maintenance Issue Types Only, Levee Inspection Report By Mile - Spring 2018

Brannan Andrus Levee Maintenance District

Waterway	Bank	Unit Miles	Inspection Start/End	Inspector
Unit No. 01 Georgiana Slough	Right	6.01	04/05/2018 04/05/2018	Keith Millard

LM Start	2.76	Rating **	U	Issue No.	71
LM End	2.79	Issue Type +	Ma	Location *	LS
Category	Earthen Levee			GPS Latitude/Longitude	
				Start	End
Item	Vegetation			38.157860 °	38.157925 °
				-121.588920 °	-121.589473 °
DWR ID	DWR_NA0002_01_f_2016_71				
Comment Code					
V2 : Remove the wild growth other than native grasses from the levee slopes.					
Inspector Comment					
Dense wildroses on landside slope.					

Photo 1 of 1 : SP_2018_NA0002_62_71_20180305_00054.jpg



Looking west at dense vines at landward toe.

LM Start	2.79	Rating **	M	Issue No.	69
LM End	4.04	Issue Type +	Ma	Location *	LS
Category	Earthen Levee			GPS Latitude/Longitude	
				Start	End
Item	Vegetation			38.157925 °	38.146984 °
				-121.589473 °	-121.601028 °
DWR ID	DWR_NA0002_01_s_2018_69				
Comment Code					
V1 : Control annual grass and weeds on the levee slopes and easements.					
Inspector Comment					

No Photos

LM Start	3.29	Rating **	M	Issue No.	45
LM End	3.29	Issue Type +	Ma	Location *	WS
Category	Earthen Levee			GPS Latitude/Longitude	
				Start	End
Item	Encroachments			38.152510 °	38.152510 °
				-121.591748 °	-121.591748 °
DWR ID	DWR_NA0002_01_f_2017_45				
Comment Code					
TR : Tree or limb					
Inspector Comment					
Tree limb on waterside slope.					

Photo 1 of 1 : SP_2018_NA0002_62_45_20180305_00032.jpg



Looking east at the waterside slope.

* Location		** Rating		+ Issue Type	
LS : Land Side	N/A : Not Applicable	A : Acceptable	N : Not Inspected/Rated	Ma : Maintenance Deficiency	
WS : Water Side		M : Minimally Acceptable	C : Corrected	Ob : Design & System Obsolescence	
CR : Crown		U : Unacceptable	A/W : Acceptable but Monitor & Maintain	En : Enforcement	

**Flood Control Project Maintenance
Levee Inspections**

Maintenance Issue Types Only, Levee Inspection Report By Mile - Spring 2018

Brannan Andrus Levee Maintenance District

Waterway	Bank	Unit Miles	Inspection Start/End	Inspector
Unit No. 01 Georgiana Slough	Right	6.01	04/05/2018 04/05/2018	Keith Millard

LM Start	3.38	Rating **	A/W	Issue No.	67
LM End	3.40	Issue Type +	Ma	Location *	CR
Category	Earthen Levee			GPS Latitude/Longitude	
				Start	End
Item	Slope Stability			38.151430 °	38.151390 °
				-121.592085 °	-121.592517 °
DWR ID	DWR_NA0002_01_s_2017_67				
Comment Code					
S1 : Repair slope instability.					
Inspector Comment					
Appears to be beginning of a landside slump. LMA's Engineer (DCC) is monitoring site for movement.					

Photo 1 of 3 : SP_2018_NA0002_62_67_20180305_00049.jpg



Looking south at sloughing on landward shoulder.

LM Start	3.38	Rating **	A/W	Issue No.	67 (cont)
LM End	3.40	Issue Type +	Ma	Location *	CR

Photo 2 of 3 : SP_2018_NA0002_62_67_20180305_00050.jpg



Looking east at possible sloughing on landward shoulder.

LM Start	3.38	Rating **	A/W	Issue No.	67 (cont)
LM End	3.40	Issue Type +	Ma	Location *	CR

Photo 3 of 3 : SP_2018_NA0002_62_67_20180305_00051.jpg



Looking at downstream corner of slough.

* Location LS : Land Side N/A : Not Applicable WS : Water Side CR : Crown		** Rating A : Acceptable M : Minimally Acceptable U : Unacceptable		N : Not Inspected/Rated C : Corrected A/W : Acceptable but Monitor & Maintain		+ Issue Type Ma : Maintenance Deficiency Ob : Design & System Obsolescence En : Enforcement	
---	--	---	--	---	--	--	--

**Flood Control Project Maintenance
Levee Inspections**

Maintenance Issue Types Only, Levee Inspection Report By Mile - Spring 2018

Brannan Andrus Levee Maintenance District

Waterway	Bank	Unit Miles	Inspection Start/End	Inspector
Unit No. 01 Georgiana Slough	Right	6.01	04/05/2018 04/05/2018	Keith Millard

LM Start	3.62	Rating **	A/W	Issue No.	9
LM End	3.62	Issue Type +	Ma	Location *	LS
Category	Earthen Levee			GPS Latitude/Longitude	
				Start	End
Item	Trim / Thin Trees			38.151744 °	38.151744 °
				-121.596425 °	-121.596425 °
DWR ID	DWR_NA0002_01_s_2012_9				
Comment Code					
T1 : Trim trees to at least five feet above ground level.					
Inspector Comment					

No Photos

LM Start	3.74	Rating **	M	Issue No.	46
LM End	3.74	Issue Type +	Ma	Location *	LS
Category	Earthen Levee			GPS Latitude/Longitude	
				Start	End
Item	Trim / Thin Trees			38.150841 °	38.150841 °
				-121.598161 °	-121.598161 °
DWR ID	DWR_NA0002_01_f_2017_46				
Comment Code					
T1 : Trim trees to at least five feet above ground level.					
Inspector Comment					

Photo 1 of 1 : SP_2018_NA0002_62_46_20180305_00033.jpg



Looking southwest at the landside slope.

LM Start	3.87	Rating **	U	Issue No.	57
LM End	3.87	Issue Type +	Ma	Location *	WS
Category	Earthen Levee			GPS Latitude/Longitude	
				Start	End
Item	Trim / Thin Trees			38.149217 °	38.149217 °
				-121.599389 °	-121.599389 °
DWR ID	DWR_NA0002_01_f_2015_57				
Comment Code					
T1 : Trim trees to at least five feet above ground level.					
Inspector Comment					

Photo 1 of 1 : SP_2018_NA0002_62_57_20180305_00041.jpg



Looking west at untrimmed tree on waterward slope.

*** Location**
LS : Land Side N/A : Not Applicable
WS : Water Side
CR : Crown

**** Rating**
A : Acceptable N : Not Inspected/Rated
M : Minimally Acceptable C : Corrected
U : Unacceptable A/W : Acceptable but Monitor & Maintain

+ Issue Type
Ma : Maintenance Deficiency
Ob : Design & System Obsolescence
En : Enforcement

**Flood Control Project Maintenance
Levee Inspections**

Maintenance Issue Types Only, Levee Inspection Report By Mile - Spring 2018

Brannan Andrus Levee Maintenance District

Waterway	Bank	Unit Miles	Inspection Start/End	Inspector
Unit No. 01 Georgiana Slough	Right	6.01	04/05/2018 04/05/2018	Keith Millard

LM Start	3.99	Rating **	A/W	Issue No.	89 (cont)	
LM End	3.99	Issue Type +	Ma	Location *		
Category	Supplemental			GPS Latitude/Longitude		
				Start	End	
Item	DWR UCIP LMA Responsibility			38.147677 °	38.147677 °	
				-121.600501 °	-121.600501 °	
DWR ID						
Comment Code						
Inspector Comment						
FS_ID:51302 DS_ID:21772 EP_NO: 11248 Repair Type: No Action Needed Crossing Status: Found UCIP Comments: FIELD_STRUCT_DESC: 1 of 2: 24-inch steel drainage pipe through levee, 3 feet below the crown. Siphon breaker is located on the waterside (WS) slope. Pump is located on the landside (LS). (24-inch pipe [HLM 3.99] authorized under Automatic Board Order (ABO) issued as Permit No. 11248, 1975 – Reclamation District No. 407) [Additional Reference(s): DWR Levee Log, 2005. USACE Sacramento O&M Manual Unit 103, June 1954, Drawing No. 50-4-2631, page 2631/2, (Station 107+76), 26-inch listed]. FS Date: 5/16/2013						

Photo 3 of 3 : UCIP_SP_2018_51302_22080.jpg



Pumping plant on LS toe.

LM Start	4.18	Rating **	C	Issue No.	12
LM End	4.20	Issue Type +	Ma	Location *	LS
Category	Earthen Levee			GPS Latitude/Longitude	
				Start	End
Item	Trim / Thin Trees			38.145094 °	38.144817 °
				-121.601585 °	-121.601477 °
DWR ID	DWR_NA0002_01_s_2012_12				
Comment Code					
T1 : Trim trees to at least five feet above ground level.					
Inspector Comment					

No Photos

* Location LS : Land Side N/A : Not Applicable WS : Water Side CR : Crown		** Rating A : Acceptable M : Minimally Acceptable U : Unacceptable		+ Issue Type Ma : Maintenance Deficiency Ob : Design & System Obsolescence En : Enforcement	
		N : Not Inspected/Rated C : Corrected A/W : Acceptable but Monitor & Maintain			

**Flood Control Project Maintenance
Levee Inspections**

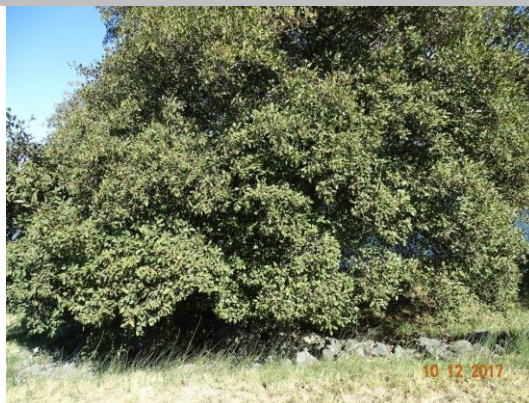
Maintenance Issue Types Only, Levee Inspection Report By Mile - Spring 2018

Brannan Andrus Levee Maintenance District

Waterway	Bank	Unit Miles	Inspection Start/End	Inspector
Unit No. 01 Georgiana Slough	Right	6.01	04/05/2018 04/05/2018	Keith Millard

LM Start	4.36	Rating **	M	Issue No.	21
LM End	4.36	Issue Type +	Ma	Location *	WS
Category	Earthen Levee			GPS Latitude/Longitude	
				Start	End
Item	Trim / Thin Trees			38.142838 °	38.142838 °
				-121.600163 °	-121.600163 °
DWR ID	DWR_NA0002_01_s _ 2012_21				
Comment Code					
T1 : Trim trees to at least five feet above ground level.					
Inspector Comment					

Photo 1 of 1 : SP_2018_NA0002_62_21_20180305_00013.jpg



Looking northeast at the waterside slope.

LM Start	4.96	Rating **	C	Issue No.	49
LM End	4.96	Issue Type +	Ma	Location *	LS
Category	Earthen Levee			GPS Latitude/Longitude	
				Start	End
Item	Trim / Thin Trees			38.135397 °	38.135397 °
				-121.594472 °	-121.594472 °
DWR ID	DWR_NA0002_01_f _ 2017_49				
Comment Code					
T1 : Trim trees to at least five feet above ground level.					
Inspector Comment					

No Photos

LM Start	4.98	Rating **	C	Issue No.	14
LM End	4.98	Issue Type +	Ma	Location *	WS
Category	Earthen Levee			GPS Latitude/Longitude	
				Start	End
Item	Trim / Thin Trees			38.135158 °	38.135158 °
				-121.594198 °	-121.594198 °
DWR ID	DWR_NA0002_01_s _ 2012_14				
Comment Code					
T4 : Trim trees over roadway to at least 12 feet above ground level.					
Inspector Comment					

No Photos

* Location		** Rating		+ Issue Type	
LS : Land Side N/A : Not Applicable		A : Acceptable		Ma : Maintenance Deficiency	
WS : Water Side		M : Minimally Acceptable		Ob : Design & System Obsolescence	
CR : Crown		U : Unacceptable		En : Enforcement	
		N : Not Inspected/Rated			
		C : Corrected			
		A/W : Acceptable but Monitor & Maintain			

**Flood Control Project Maintenance
Levee Inspections**

Maintenance Issue Types Only, Levee Inspection Report By Mile - Spring 2018

Brannan Andrus Levee Maintenance District

Waterway	Bank	Unit Miles	Inspection Start/End	Inspector
Unit No. 01 Georgiana Slough	Right	6.01	04/05/2018 04/05/2018	Keith Millard

LM Start	5.05	Rating **	A/W	Issue No.	63
LM End	5.05	Issue Type +	Ma	Location *	WS
Category	Earthen Levee			GPS Latitude/Longitude	
				Start	End
Item	Trim / Thin Trees			38.134467 °	38.134467 °
				-121.593428 °	-121.593428 °
DWR ID	DWR_NA0002_01_s_2017_63				
Comment Code					
T2 : Thin trees to allow visibility of the ground and room to flood fight.					
Inspector Comment					

No Photos

LM Start	5.06	Rating **	A/W	Issue No.	62
LM End	5.06	Issue Type +	Ma	Location *	WS
Category	Earthen Levee			GPS Latitude/Longitude	
				Start	End
Item	Encroachments			38.134275 °	38.134275 °
				-121.593213 °	-121.593213 °
DWR ID	DWR_NA0002_01_f_2016_62				
Comment Code					
TR : Tree or limb					
Inspector Comment					
Dead Pine tree on waterside berm.					

LM Start	5.06	Rating **	A/W	Issue No.	62 (cont)
LM End	5.06	Issue Type +	Ma	Location *	WS

Photo 1 of 2 : SP_2018_NA0002_62_62_20180305_00045.jpg



Looking upstream at dead pine tree on waterward berm.

Photo 2 of 2 : SP_2018_NA0002_62_62_20180305_00046.jpg



Looking downstream at dead pine tree on waterward berm.

* Location LS : Land Side N/A : Not Applicable WS : Water Side CR : Crown		** Rating A : Acceptable M : Minimally Acceptable U : Unacceptable N : Not Inspected/Rated C : Corrected A/W : Acceptable but Monitor & Maintain		+ Issue Type Ma : Maintenance Deficiency Ob : Design & System Obsolescence En : Enforcement
--	--	---	--	---

**Flood Control Project Maintenance
Levee Inspections**

Maintenance Issue Types Only, Levee Inspection Report By Mile - Spring 2018

Brannan Andrus Levee Maintenance District

Waterway	Bank	Unit Miles	Inspection Start/End	Inspector
Unit No. 01 Georgiana Slough	Right	6.01	04/05/2018 04/05/2018	Keith Millard

LM Start	5.17	Rating **	M	Issue No.	31
LM End	5.17	Issue Type +	Ma	Location *	WS
Category	Earthen Levee			GPS Latitude/Longitude	
				Start	End
Item	Trim / Thin Trees			38.133145 °	38.133145 °
				-121.591895 °	-121.591895 °
DWR ID	DWR_NA0002_01_s _ 2013_31				
Comment Code					
T4 : Trim trees over roadway to at least 12 feet above ground level.					
Inspector Comment					

Photo 1 of 1 : SP_2018_NA0002_62_31_20180305_00026.jpg



Looking southeast at tree over levee crown.

LM Start	5.33	Rating **	M	Issue No.	2
LM End	5.33	Issue Type +	Ma	Location *	WS
Category	Earthen Levee			GPS Latitude/Longitude	
				Start	End
Item	Trim / Thin Trees			38.131327 °	38.131327 °
				-121.589980 °	-121.589980 °
DWR ID	DWR_NA0002_01_s _ 2012_2				
Comment Code					
T1 : Trim trees to at least five feet above ground level.					
Inspector Comment					

Photo 1 of 1 : SP_2018_NA0002_62_2_20180305_00002.jpg



Looking at untrimmed trees on waterward slope.

* Location LS : Land Side N/A : Not Applicable WS : Water Side CR : Crown		** Rating A : Acceptable N : Not Inspected/Rated M : Minimally Acceptable C : Corrected U : Unacceptable A/W : Acceptable but Monitor & Maintain		+ Issue Type Ma : Maintenance Deficiency Ob : Design & System Obsolescence En : Enforcement
--	--	---	--	---

**Flood Control Project Maintenance
Levee Inspections**

Maintenance Issue Types Only, Levee Inspection Report By Mile - Spring 2018

Brannan Andrus Levee Maintenance District

Waterway	Bank	Unit Miles	Inspection Start/End	Inspector
Unit No. 01 Georgiana Slough	Right	6.01	04/05/2018 04/05/2018	Keith Millard

LM Start	5.42	Rating **	M	Issue No.	54
LM End	5.42	Issue Type +	Ma	Location *	LS
Category	Earthen Levee			GPS Latitude/Longitude	
				Start	End
Item	Trim / Thin Trees			38.130335 °	38.130335 °
				-121.588920 °	-121.588920 °
DWR ID	DWR_NA0002_01_s _ 2014_54				
Comment Code					
T1 : Trim trees to at least five feet above ground level.					
Inspector Comment					

Photo 1 of 1 : SP_2018_NA0002_62_54_20180305_00037.jpg



Looking at dense trees at landward toe.

LM Start	5.43	Rating **	U	Issue No.	23
LM End	5.57	Issue Type +	Ma	Location *	LS
Category	Earthen Levee			GPS Latitude/Longitude	
				Start	End
Item	Vegetation			38.130253 °	38.129359 °
				-121.588822 °	-121.586487 °
DWR ID	DWR_NA0002_01_s _ 2012_23				
Comment Code					
V2 : Remove the wild growth other than native grasses from the levee slopes.					
Inspector Comment					
Control vegetation at landside toe.					

Photo 1 of 6 : SP_2018_NA0002_62_23_20180305_00014.jpg



Looking south at vegetation at landward toe. (Spring 2016)

LM Start	5.43	Rating **	U	Issue No.	23 (cont)
LM End	5.57	Issue Type +	Ma	Location *	LS

Photo 2 of 6 : SP_2018_NA0002_62_23_20180305_00015.jpg



Looking west at dense vegetation at landward toe.

* Location LS : Land Side N/A : Not Applicable WS : Water Side CR : Crown		** Rating A : Acceptable M : Minimally Acceptable U : Unacceptable		N : Not Inspected/Rated C : Corrected A/W : Acceptable but Monitor & Maintain		+ Issue Type Ma : Maintenance Deficiency Ob : Design & System Obsolescence En : Enforcement	
--	--	--	--	---	--	---	--

**Flood Control Project Maintenance
Levee Inspections**

Maintenance Issue Types Only, Levee Inspection Report By Mile - Spring 2018

Brannan Andrus Levee Maintenance District

Waterway	Bank	Unit Miles	Inspection Start/End	Inspector
Unit No. 01 Georgiana Slough	Right	6.01	04/05/2018 04/05/2018	Keith Millard

LM Start	5.43	Rating **	U	Issue No.	23 (cont)	
LM End	5.57	Issue Type +	Ma	Location *	LS	
Category	Earthen Levee			GPS Latitude/Longitude		
				Start		End
Item	Vegetation			38.130253 °		38.129359 °
				-121.588822 °		-121.586487 °
DWR ID	DWR_NA0002_01_s_2012_23					
Comment Code						
V2 : Remove the wild growth other than native grasses from the levee slopes.						
Inspector Comment						
Control vegetation at landside toe.						

LM Start	5.43	Rating **	U	Issue No.	23 (cont)
LM End	5.57	Issue Type +	Ma	Location *	LS

Photo 3 of 6 : SP_2018_NA0002_62_23_20180305_00016.jpg



Looking east at dense vegetation at landward toe.

Photo 4 of 6 : SP_2018_NA0002_62_23_20180305_00017.jpg



Looking east at dense vegetation on landward toe.

LM Start	5.43	Rating **	U	Issue No.	23 (cont)
LM End	5.57	Issue Type +	Ma	Location *	LS

Photo 5 of 6 : SP_2018_NA0002_62_23_20180305_00018.jpg



Looking south at dense berry vines and trees on the landward slope and toe.

* Location LS : Land Side N/A : Not Applicable WS : Water Side CR : Crown		** Rating A : Acceptable M : Minimally Acceptable U : Unacceptable N : Not Inspected/Rated C : Corrected A/W : Acceptable but Monitor & Maintain		+ Issue Type Ma : Maintenance Deficiency Ob : Design & System Obsolescence En : Enforcement	
---	--	--	--	--	--

**Flood Control Project Maintenance
Levee Inspections**

Maintenance Issue Types Only, Levee Inspection Report By Mile - Spring 2018

Brannan Andrus Levee Maintenance District

Waterway	Bank	Unit Miles	Inspection Start/End	Inspector
Unit No. 01 Georgiana Slough	Right	6.01	04/05/2018 04/05/2018	Keith Millard

LM Start	5.43	Rating **	U	Issue No.	23 (cont)	
LM End	5.57	Issue Type +	Ma	Location *	LS	
Category	Earthen Levee			GPS Latitude/Longitude		
				Start		End
Item	Vegetation			38.130253 °		38.129359 °
				-121.588822 °		-121.586487 °
DWR ID	DWR_NA0002_01_s _ 2012_23					
Comment Code						
V2 : Remove the wild growth other than native grasses from the levee slopes.						
Inspector Comment						
Control vegetation at landside toe.						

Photo 6 of 6 : SP_2018_NA0002_62_23_20180305_00019.jpg



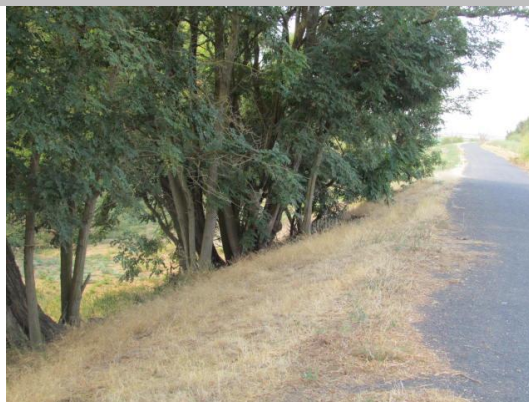
Looking south at trees, berry vines, and wild rose on landside toe.

LM Start	5.46	Rating **	C	Issue No.	10	
LM End	5.46	Issue Type +	Ma	Location *		
Category	Earthen Levee			GPS Latitude/Longitude		
				Start	End	
Item	Crown Surface / Depressions / Rutting			38.129935 °	38.129935 °	
				-121.588383 °	-121.588383 °	
DWR ID	DWR_NA0002_01_s _ 2017_10					
Comment Code						
C2 : Repair depressions or ruts in the crown or slope.						
Inspector Comment						
Small pot hole on levee crown.						

No Photos

LM Start	5.78	Rating **	M	Issue No.	17
LM End	5.78	Issue Type +	Ma	Location *	LS
Category	Earthen Levee			GPS Latitude/Longitude	
				Start	End
Item	Trim / Thin Trees			38.129531 °	38.129531 °
				-121.582775 °	-121.582775 °
DWR ID	DWR_NA0002_01_s _ 2012_17				
Comment Code					
T1 : Trim trees to at least five feet above ground level.					
Inspector Comment					
Trim trees for visibility.					

Photo 1 of 1 : SP_2018_NA0002_62_17_20180305_00011.jpg



Looking at dense trees on landward slope and toe.

* Location LS : Land Side N/A : Not Applicable WS : Water Side CR : Crown		** Rating A : Acceptable M : Minimally Acceptable U : Unacceptable N : Not Inspected/Rated C : Corrected A/W : Acceptable but Monitor & Maintain		+ Issue Type Ma : Maintenance Deficiency Ob : Design & System Obsolescence En : Enforcement	
--	--	---	--	---	--

**Flood Control Project Maintenance
Levee Inspections**

Maintenance Issue Types Only, Levee Inspection Report By Mile - Spring 2018

Brannan Andrus Levee Maintenance District

Waterway	Bank	Unit Miles	Inspection Start/End	Inspector
Unit No. 01 Georgiana Slough	Right	6.01	04/05/2018 04/05/2018	Keith Millard

LM Start	5.86	Rating **	M	Issue No.	16
LM End	6.00	Issue Type +	Ma	Location *	CR
Category	Earthen Levee			GPS Latitude/Longitude	
				Start	End
Item	Vegetation			38.129705 °	38.129626 °
				-121.581196 °	-121.578757 °
DWR ID	DWR_NA0002_01_s_2018_16				
Comment Code					
V9 : Keep the crown roadway free of vegetation.					
Inspector Comment					

No Photos

* Location LS : Land Side N/A : Not Applicable WS : Water Side CR : Crown	** Rating A : Acceptable M : Minimally Acceptable U : Unacceptable N : Not Inspected/Rated C : Corrected A/W : Acceptable but Monitor & Maintain	+ Issue Type Ma : Maintenance Deficiency Ob : Design & System Obsolescence En : Enforcement
--	---	---

**Flood Control Project Maintenance
Levee Inspections**

Maintenance Issue Types Only, Levee Inspection Report By Mile - Spring 2018

Brannan Andrus Levee Maintenance District

Waterway	Bank	Unit Miles	Inspection Start/End	Inspector
Unit No. 02 Sacramento River	Left	11.54	04/05/2018 04/05/2018	Keith Millard

LM Start	0.02	Rating **	M	Issue No.	79
LM End	0.49	Issue Type +	Ma	Location *	LS
Category	Earthen Levee		GPS Latitude/Longitude		
			Start	End	
Item	Vegetation		38.191804 °	38.188871 °	
			-121.567942 °	-121.575775 °	
DWR ID	DWR_NA0002_02_s _ 2018_79				
Comment Code					
V1 : Control annual grass and weeds on the levee slopes and easements.					
Inspector Comment					

No Photos

LM Start	0.55	Rating **	M	Issue No.	90
LM End	0.55	Issue Type +	Ma	Location *	LS
Category	Earthen Levee		GPS Latitude/Longitude		
			Start	End	
Item	Trim / Thin Trees		38.188484 °	38.188484 °	
			-121.576916 °	-121.576916 °	
DWR ID	DWR_NA0002_02_f _ 2016_90				
Comment Code					
T1 : Trim trees to at least five feet above ground level.					
Inspector Comment					

No Photos

* Location LS : Land Side N/A : Not Applicable WS : Water Side CR : Crown	** Rating A : Acceptable M : Minimally Acceptable U : Unacceptable	N : Not Inspected/Rated C : Corrected A/W : Acceptable but Monitor & Maintain	+ Issue Type Ma : Maintenance Deficiency Ob : Design & System Obsolescence En : Enforcement
--	--	---	---

**Flood Control Project Maintenance
Levee Inspections**

Maintenance Issue Types Only, Levee Inspection Report By Mile - Spring 2018

Brannan Andrus Levee Maintenance District

Waterway	Bank	Unit Miles	Inspection Start/End	Inspector
Unit No. 02 Sacramento River	Left	11.54	04/05/2018 04/05/2018	Keith Millard

LM Start	0.85	Rating **	M	Issue No.	108
LM End	1.33	Issue Type +	Ma	Location *	LS
Category	Earthen Levee			GPS Latitude/Longitude	
				Start	End
Item	Vegetation			38.186021 °	38.180473 °
				-121.581267 °	-121.586507 °
DWR ID	DWR_NA0002_02_f_2017_108				
Comment Code					
V2 : Remove the wild growth other than native grasses from the levee slopes.					
Inspector Comment					

Photo 1 of 1 : SP_2018_NA0002_63_108_20180305_00084.jpg



Looking northeast at the landside slope.

LM Start	0.86	Rating **	M	Issue No.	86
LM End	1.33	Issue Type +	Ma	Location *	WS
Category	Earthen Levee			GPS Latitude/Longitude	
				Start	End
Item	Vegetation			38.185910 °	38.180472 °
				-121.581441 °	-121.586509 °
DWR ID	DWR_NA0002_02_s_2018_86				
Comment Code					
V1 : Control annual grass and weeds on the levee slopes and easements.					
Inspector Comment					

No Photos

LM Start	1.00	Rating **	M	Issue No.	133
LM End	1.00	Issue Type +	Ma	Location *	WS
Category	Earthen Levee			GPS Latitude/Longitude	
				Start	End
Item	Encroachments			38.184398 °	38.184398 °
				-121.583134 °	-121.583134 °
DWR ID	DWR_NA0002_02_f_2017_133				
Comment Code					
TR : Tree or limb					
Inspector Comment					
Downed tree limbs on waterside slope.					

No Photos

* Location		** Rating		+ Issue Type	
LS : Land Side	N/A : Not Applicable	A : Acceptable	N : Not Inspected/Rated	Ma : Maintenance Deficiency	
WS : Water Side		M : Minimally Acceptable	C : Corrected	Ob : Design & System Obsolescence	
CR : Crown		U : Unacceptable	A/W : Acceptable but Monitor & Maintain	En : Enforcement	

**Flood Control Project Maintenance
Levee Inspections**

Maintenance Issue Types Only, Levee Inspection Report By Mile - Spring 2018

Brannan Andrus Levee Maintenance District

Waterway	Bank	Unit Miles	Inspection Start/End	Inspector
Unit No. 02 Sacramento River	Left	11.54	04/05/2018 04/05/2018	Keith Millard

LM Start	1.07	Rating **	M	Issue No.	91
LM End	1.07	Issue Type +	Ma	Location *	WS
Category	Earthen Levee			GPS Latitude/Longitude	
				Start	End
Item	Encroachments			38.183586 °	38.183586 °
				-121.584010 °	-121.584010 °
DWR ID	DWR_NA0002_02_f_2015_91				
Comment Code					
TR : Tree or limb					
Inspector Comment					
Downed tree branches on waterside slope and berm.					

Photo 1 of 2 : SP_2018_NA0002_63_91_20180305_00060.jpg



Looking south west at fallen tree on waterward slope and berm.

LM Start	1.07	Rating **	M	Issue No.	91 (cont)
LM End	1.07	Issue Type +	Ma	Location *	WS

Photo 2 of 2 : SP_2018_NA0002_63_91_20180305_00061.jpg



Looking west at fallen tree on waterward slope and berm.

LM Start	1.16	Rating **	M	Issue No.	92
LM End	1.16	Issue Type +	Ma	Location *	WS
Category	Earthen Levee			GPS Latitude/Longitude	
				Start	End
Item	Encroachments			38.182527 °	38.182527 °
				-121.584901 °	-121.584901 °
DWR ID	DWR_NA0002_02_f_2015_92				
Comment Code					
TR : Tree or limb					
Inspector Comment					
Downed tree branch on waterside slope and berm.					

Photo 1 of 2 : SP_2018_NA0002_63_92_20180305_00062.jpg



Looking west at fallen tree branch on waterward berm. (Spring 2016)

*** Location**

LS : Land Side N/A : Not Applicable
WS : Water Side
CR : Crown

**** Rating**

A : Acceptable N : Not Inspected/Rated
M : Minimally Acceptable C : Corrected
U : Unacceptable A/W : Acceptable but Monitor & Maintain

+ Issue Type

Ma : Maintenance Deficiency
Ob : Design & System Obsolescence
En : Enforcement

**Flood Control Project Maintenance
Levee Inspections**

Maintenance Issue Types Only, Levee Inspection Report By Mile - Spring 2018

Brannan Andrus Levee Maintenance District

Waterway	Bank	Unit Miles	Inspection Start/End	Inspector
Unit No. 02 Sacramento River	Left	11.54	04/05/2018 04/05/2018	Keith Millard

LM Start	1.16	Rating **	M	Issue No.	92 (cont)	
LM End	1.16	Issue Type +	Ma	Location *	WS	
Category	Earthen Levee			GPS Latitude/Longitude		
				Start	End	
Item	Encroachments			38.182527 °	38.182527 °	
				-121.584901 °	-121.584901 °	
DWR ID	DWR_NA0002_02_f_2015_92					
Comment Code						
TR : Tree or limb						
Inspector Comment						
Downed tree branch on waterside slope and berm.						

Photo 2 of 2 : SP_2018_NA0002_63_92_20180305_00063.jpg



Looking at fallen tree on waterward slope and berm. (Spring 2015)

LM Start	1.23	Rating **	M	Issue No.	134
LM End	1.26	Issue Type +	Ma	Location *	LS
Category	Earthen Levee			GPS Latitude/Longitude	
				Start	End
Item	Vegetation			38.181617 °	38.181265 °
				-121.585589 °	-121.585863 °
DWR ID	DWR_NA0002_02_f_2017_134				
Comment Code					
V2 : Remove the wild growth other than native grasses from the levee slopes.					
Inspector Comment					
Dense wild berry vines at landside toe.					

Photo 1 of 1 : SP_2018_NA0002_63_134_20180305_00100.jpg



Looking southwest at the landside slope.

LM Start	1.33	Rating **	M	Issue No.	81
LM End	1.33	Issue Type +	Ma	Location *	WS
Category	Earthen Levee			GPS Latitude/Longitude	
				Start	End
Item	Encroachments			38.180472 °	38.180472 °
				-121.586510 °	-121.586510 °
DWR ID	DWR_NA0002_02_s_2018_81				
Comment Code					
TR : Tree or limb					
Inspector Comment					
Remove large fallen tree on waterside slope.					

Photo 1 of 1 : SP_2018_NA0002_63_81_20180409_00211.jpg



Fallen tree on waterside should be removed.

*** Location**

LS : Land Side N/A : Not Applicable
WS : Water Side
CR : Crown

**** Rating**

A : Acceptable N : Not Inspected/Rated
M : Minimally Acceptable C : Corrected
U : Unacceptable A/W : Acceptable but Monitor & Maintain

+ Issue Type

Ma : Maintenance Deficiency
Ob : Design & System Obsolescence
En : Enforcement

**Flood Control Project Maintenance
Levee Inspections**

Maintenance Issue Types Only, Levee Inspection Report By Mile - Spring 2018

Brannan Andrus Levee Maintenance District

Waterway	Bank	Unit Miles	Inspection Start/End	Inspector
Unit No. 02 Sacramento River	Left	11.54	04/05/2018 04/05/2018	Keith Millard

LM Start	1.40	Rating **	M	Issue No.	96
LM End	1.40	Issue Type +	Ma	Location *	LS
Category	Earthen Levee			GPS Latitude/Longitude	
				Start	End
Item	Encroachments			38.179543 °	38.179543 °
				-121.587226 °	-121.587226 °
DWR ID	DWR_NA0002_02_s_2015_96				
Comment Code					
TR : Tree or limb					
Inspector Comment					
Broken tree branch on landside toe.					

Photo 1 of 1 : SP_2018_NA0002_63_96_20180305_00068.jpg



Looking east at broken tree limb at landward toe.

LM Start	1.43	Rating **	M	Issue No.	135
LM End	1.43	Issue Type +	Ma	Location *	WS
Category	Earthen Levee			GPS Latitude/Longitude	
				Start	End
Item	Encroachments			38.179169 °	38.179169 °
				-121.587511 °	-121.587511 °
DWR ID	DWR_NA0002_02_f_2017_135				
Comment Code					
TR : Tree or limb					
Inspector Comment					
Downed tree limbs on waterside slope.					

No Photos

* Location LS : Land Side N/A : Not Applicable WS : Water Side CR : Crown		** Rating A : Acceptable N : Not Inspected/Rated M : Minimally Acceptable C : Corrected U : Unacceptable A/W : Acceptable but Monitor & Maintain		+ Issue Type Ma : Maintenance Deficiency Ob : Design & System Obsolescence En : Enforcement
--	--	---	--	---

**Flood Control Project Maintenance
Levee Inspections**

Maintenance Issue Types Only, Levee Inspection Report By Mile - Spring 2018

Brannan Andrus Levee Maintenance District

Waterway	Bank	Unit Miles	Inspection Start/End	Inspector
Unit No. 02 Sacramento River	Left	11.54	04/05/2018 04/05/2018	Keith Millard

LM Start	1.45	Rating **	U	Issue No.	27
LM End	1.47	Issue Type +	Ma	Location *	LS
Category	Earthen Levee			GPS Latitude/Longitude	
				Start	End
Item	Trim / Thin Trees			38.178950 °	38.178950 °
				-121.587717 °	-121.587717 °
DWR ID	DWR_NA0002_02_s_2012_27				
Comment Code					
T1 : Trim trees to at least five feet above ground level.					
Inspector Comment					
Dense vegetation should be trimmed back fifteen feet from landside toe.					

LM Start	1.45	Rating **	U	Issue No.	27 (cont)
LM End	1.47	Issue Type +	Ma	Location *	LS

Photo 1 of 4 : SP_2018_NA0002_63_27_20180305_00031.jpg



Looking east at dense vegetation at landward toe.

Photo 2 of 4 : SP_2018_NA0002_63_27_20180305_00032.jpg



Looking east at dense vegetation at landward toe.

Photo 3 of 4 : SP_2018_NA0002_63_27_20180305_00033.jpg



Looking east at dense vegetation on landward toe.

LM Start	1.45	Rating **	U	Issue No.	27 (cont)
LM End	1.47	Issue Type +	Ma	Location *	LS

* Location LS : Land Side N/A : Not Applicable WS : Water Side CR : Crown		** Rating A : Acceptable M : Minimally Acceptable U : Unacceptable N : Not Inspected/Rated C : Corrected A/W : Acceptable but Monitor & Maintain		+ Issue Type Ma : Maintenance Deficiency Ob : Design & System Obsolescence En : Enforcement	
---	--	--	--	--	--

**Flood Control Project Maintenance
Levee Inspections**

Maintenance Issue Types Only, Levee Inspection Report By Mile - Spring 2018

Brannan Andrus Levee Maintenance District

Waterway	Bank	Unit Miles	Inspection Start/End	Inspector
Unit No. 02 Sacramento River	Left	11.54	04/05/2018 04/05/2018	Keith Millard

LM Start	1.45	Rating **	U	Issue No.	27 (cont)	
LM End	1.47	Issue Type +	Ma	Location *	LS	
Category	Earthen Levee			GPS Latitude/Longitude		
				Start		End
Item	Trim / Thin Trees			38.178950 °		38.178950 °
				-121.587717 °		-121.587717 °
DWR ID	DWR_NA0002_02_s _ 2012_27					
Comment Code						
T1 : Trim trees to at least five feet above ground level.						
Inspector Comment						
Dense vegetation should be trimmed back fifteen feet from landside toe.						

Photo 4 of 4 : SP_2018_NA0002_63_27_20180305_00034.jpg



Looking southeast at dense trees on landside toe.

LM Start	1.46	Rating **	U	Issue No.	109
LM End	1.46	Issue Type +	Ma	Location *	WS
Category	Earthen Levee			GPS Latitude/Longitude	
				Start	End
Item	Encroachments			38.178805 °	38.178805 °
				-121.587850 °	-121.587850 °
DWR ID	DWR_NA0002_02_s _ 2016_109				
Comment Code					
TR : Tree or limb					
Inspector Comment					
Downed tree branches and limbs on landside slope.					

Photo 1 of 2 : SP_2018_NA0002_63_109_20180305_00085.jpg



Looking southwest at fallen tree on waterward slope.

LM Start	1.46	Rating **	U	Issue No.	109 (cont)
LM End	1.46	Issue Type +	Ma	Location *	WS

Photo 2 of 2 : SP_2018_NA0002_63_109_20180305_00086.jpg



Looking west at fallen tree on waterward slope.

* Location LS : Land Side N/A : Not Applicable WS : Water Side CR : Crown		** Rating A : Acceptable M : Minimally Acceptable U : Unacceptable		N : Not Inspected/Rated C : Corrected A/W : Acceptable but Monitor & Maintain		+ Issue Type Ma : Maintenance Deficiency Ob : Design & System Obsolescence En : Enforcement	
--	--	--	--	---	--	---	--

**Flood Control Project Maintenance
Levee Inspections**

Maintenance Issue Types Only, Levee Inspection Report By Mile - Spring 2018

Brannan Andrus Levee Maintenance District

Waterway	Bank	Unit Miles	Inspection Start/End	Inspector
Unit No. 02 Sacramento River	Left	11.54	04/05/2018 04/05/2018	Keith Millard

LM Start	1.60	Rating **	M	Issue No.	35
LM End	1.61	Issue Type +	Ma	Location *	LS
Category	Earthen Levee			GPS Latitude/Longitude	
				Start	End
Item	Trim / Thin Trees			38.177047 °	38.176874 °
				-121.589139 °	-121.589249 °
DWR ID	DWR_NA0002_02_s_2012_35				
Comment Code					
T1 : Trim trees to at least five feet above ground level.					
Inspector Comment					

No Photos

LM Start	1.64	Rating **	M	Issue No.	136
LM End	1.64	Issue Type +	Ma	Location *	LS
Category	Earthen Levee			GPS Latitude/Longitude	
				Start	End
Item	Encroachments			38.176474 °	38.176474 °
				-121.589483 °	-121.589483 °
DWR ID	DWR_NA0002_02_f_2017_136				
Comment Code					
TR : Tree or limb					
Inspector Comment					

No Photos

LM Start	1.80	Rating **	U	Issue No.	45
LM End	1.82	Issue Type +	Ma	Location *	LS
Category	Earthen Levee			GPS Latitude/Longitude	
				Start	End
Item	Vegetation			38.174437 °	38.174153 °
				-121.590786 °	-121.590980 °
DWR ID	DWR_NA0002_02_f_2013_45				
Comment Code					
V2 : Remove the wild growth other than native grasses from the levee slopes.					
Inspector Comment					
Dense vegetation on landside slope and toe					

Photo 1 of 2 : SP_2018_NA0002_63_45_20180305_00047.jpg



Looking southwest at dense vegetation on landward slope.

* Location
LS : Land Side N/A : Not Applicable
WS : Water Side
CR : Crown

** Rating
A : Acceptable N : Not Inspected/Rated
M : Minimally Acceptable C : Corrected
U : Unacceptable A/W : Acceptable but Monitor & Maintain

+ Issue Type
Ma : Maintenance Deficiency
Ob : Design & System Obsolescence
En : Enforcement

**Flood Control Project Maintenance
Levee Inspections**

Maintenance Issue Types Only, Levee Inspection Report By Mile - Spring 2018

Brannan Andrus Levee Maintenance District

Waterway	Bank	Unit Miles	Inspection Start/End	Inspector
Unit No. 02 Sacramento River	Left	11.54	04/05/2018 04/05/2018	Keith Millard

LM Start	1.80	Rating **	U	Issue No.	45 (cont)	
LM End	1.82	Issue Type +	Ma	Location *	LS	
Category	Earthen Levee			GPS Latitude/Longitude		
				Start		End
Item	Vegetation			38.174437 °		38.174153 °
				-121.590786 °		-121.590980 °
DWR ID	DWR_NA0002_02_f_2013_45					
Comment Code						
V2 : Remove the wild growth other than native grasses from the levee slopes.						
Inspector Comment						
Dense vegetation on landside slope and toe						

Photo 2 of 2 : SP_2018_NA0002_63_45_20180305_00048.jpg



Looking northeast at dense vegetation on landward slope and toe.

LM Start	1.88	Rating **	M	Issue No.	93
LM End	1.89	Issue Type +	Ma	Location *	LS
Category	Earthen Levee			GPS Latitude/Longitude	
				Start	End
Item	Encroachments			38.173403 °	38.173221 °
				-121.591389 °	-121.591512 °
DWR ID	DWR_NA0002_02_f_2015_93				
Comment Code					
TR : Tree or limb					
Inspector Comment					
Broken tree limbs on landside slope and toe.					

Photo 1 of 2 : SP_2018_NA0002_63_93_20180305_00064.jpg



Looking southeast at broken tree limb on landward slope.

LM Start	1.88	Rating **	M	Issue No.	93 (cont)
LM End	1.89	Issue Type +	Ma	Location *	LS

Photo 2 of 2 : SP_2018_NA0002_63_93_20180305_00065.jpg



Looking east at broken tree limb at landward toe.

* Location LS : Land Side N/A : Not Applicable WS : Water Side CR : Crown		** Rating A : Acceptable M : Minimally Acceptable U : Unacceptable		N : Not Inspected/Rated C : Corrected A/W : Acceptable but Monitor & Maintain		+ Issue Type Ma : Maintenance Deficiency Ob : Design & System Obsolescence En : Enforcement	
--	--	--	--	---	--	---	--

**Flood Control Project Maintenance
Levee Inspections**

Maintenance Issue Types Only, Levee Inspection Report By Mile - Spring 2018

Brannan Andrus Levee Maintenance District

Waterway	Bank	Unit Miles	Inspection Start/End	Inspector
Unit No. 02 Sacramento River	Left	11.54	04/05/2018 04/05/2018	Keith Millard

LM Start	1.89	Rating **	M	Issue No.	138
LM End	1.89	Issue Type +	Ma	Location *	LS
Category	Earthen Levee			GPS Latitude/Longitude	
				Start	End
Item	Encroachments			38.173272 °	38.173272 °
				-121.591509 °	-121.591509 °
DWR ID	DWR_NA0002_02_f_2017_138				
Comment Code					
TR : Tree or limb					
Inspector Comment					

Photo 1 of 1 : SP_2018_NA0002_63_138_20180305_00101.jpg



Looking southeast at the landside slope.

LM Start	2.16	Rating **	M	Issue No.	120
LM End	2.16	Issue Type +	Ma	Location *	LS
Category	Earthen Levee			GPS Latitude/Longitude	
				Start	End
Item	Vegetation			38.169814 °	38.169814 °
				-121.593951 °	-121.593951 °
DWR ID	DWR_NA0002_02_f_2016_120				
Comment Code					
V2 : Remove the wild growth other than native grasses from the levee slopes.					
Inspector Comment					
Fig tree saplings on landside slope.					

Photo 1 of 1 : SP_2018_NA0002_63_120_20180305_00098.jpg



Looking northeast at fig tree saplings at landward toe.

LM Start	2.21	Rating **	M	Issue No.	128
LM End	2.21	Issue Type +	Ma	Location *	LS
Category	Earthen Levee			GPS Latitude/Longitude	
				Start	End
Item	Vegetation			38.169154 °	38.169154 °
				-121.594258 °	-121.594258 °
DWR ID	DWR_NA0002_02_f_2017_128				
Comment Code					
V2 : Remove the wild growth other than native grasses from the levee slopes.					
Inspector Comment					

No Photos

* Location LS : Land Side N/A : Not Applicable WS : Water Side CR : Crown		** Rating A : Acceptable N : Not Inspected/Rated M : Minimally Acceptable C : Corrected U : Unacceptable A/W : Acceptable but Monitor & Maintain		+ Issue Type Ma : Maintenance Deficiency Ob : Design & System Obsolescence En : Enforcement	
--	--	---	--	---	--

**Flood Control Project Maintenance
Levee Inspections**

Maintenance Issue Types Only, Levee Inspection Report By Mile - Spring 2018

Brannan Andrus Levee Maintenance District

Waterway	Bank	Unit Miles	Inspection Start/End	Inspector
Unit No. 02 Sacramento River	Left	11.54	04/05/2018 04/05/2018	Keith Millard

LM Start	2.34	Rating **	U	Issue No.	25
LM End	2.38	Issue Type +	Ma	Location *	LS
Category	Earthen Levee			GPS Latitude/Longitude	
				Start	End
Item	Trim / Thin Trees			38.167627 °	38.167152 °
				-121.595538 °	-121.595997 °
DWR ID	DWR_NA0002_02_s _ 2012_25				
Comment Code					
T2 : Thin trees to allow visibility of the ground and room to flood fight.					
Inspector Comment					

Photo 1 of 1 : SP_2018_NA0002_63_25_20180305_00029.jpg



Looking southeast at trees at landward shoulder. (Spring 2015)

LM Start	2.42	Rating **	U	Issue No.	99
LM End	2.42	Issue Type +	Ma	Location *	LS
Category	Earthen Levee			GPS Latitude/Longitude	
				Start	End
Item	Vegetation			38.166772 °	38.166772 °
				-121.596667 °	-121.596667 °
DWR ID	DWR_NA0002_02_s _ 2014_99				
Comment Code					
V2 : Remove the wild growth other than native grasses from the levee slopes.					
Inspector Comment					
Dense willows on landside slope.					

Photo 1 of 2 : SP_2018_NA0002_63_99_20180305_00072.jpg



Looking southwest at vegetation (willows) on landward slope and toe.

LM Start	2.42	Rating **	U	Issue No.	99 (cont)
LM End	2.42	Issue Type +	Ma	Location *	LS

Photo 2 of 2 : SP_2018_NA0002_63_99_20180305_00073.jpg



* Location LS : Land Side N/A : Not Applicable WS : Water Side CR : Crown		** Rating A : Acceptable M : Minimally Acceptable U : Unacceptable N : Not Inspected/Rated C : Corrected A/W : Acceptable but Monitor & Maintain		+ Issue Type Ma : Maintenance Deficiency Ob : Design & System Obsolescence En : Enforcement
--	--	---	--	---

**Flood Control Project Maintenance
Levee Inspections**

Maintenance Issue Types Only, Levee Inspection Report By Mile - Spring 2018

Brannan Andrus Levee Maintenance District

Waterway	Bank	Unit Miles	Inspection Start/End	Inspector
Unit No. 02 Sacramento River	Left	11.54	04/05/2018 04/05/2018	Keith Millard

LM Start	2.48	Rating **	U	Issue No.	29
LM End	2.48	Issue Type +	Ma	Location *	LS
Category	Earthen Levee			GPS Latitude/Longitude	
				Start	End
Item	Trim / Thin Trees			38.166378 °	38.166378 °
				-121.597570 °	-121.597570 °
DWR ID	DWR_NA0002_02_s_2012_29				
Comment Code					
T1 : Trim trees to at least five feet above ground level.					
Inspector Comment					

Photo 1 of 2 : SP_2018_NA0002_63_29_20180305_00036.jpg



Looking northeast at dense vegetation on landward slope.

LM Start	2.48	Rating **	U	Issue No.	29 (cont)
LM End	2.48	Issue Type +	Ma	Location *	LS

Photo 2 of 2 : SP_2018_NA0002_63_29_20180305_00037.jpg



Looking southwest at dense vegetation on landward slope.

LM Start	2.49	Rating **	M	Issue No.	127
LM End	2.49	Issue Type +	Ma	Location *	LS
Category	Earthen Levee			GPS Latitude/Longitude	
				Start	End
Item	Vegetation			38.166243 °	38.166243 °
				-121.597741 °	-121.597741 °
DWR ID	DWR_NA0002_02_f_2017_127				
Comment Code					
V2 : Remove the wild growth other than native grasses from the levee slopes.					
Inspector Comment					

No Photos

* Location LS : Land Side N/A : Not Applicable WS : Water Side CR : Crown	** Rating A : Acceptable M : Minimally Acceptable U : Unacceptable	N : Not Inspected/Rated C : Corrected A/W : Acceptable but Monitor & Maintain	+ Issue Type Ma : Maintenance Deficiency Ob : Design & System Obsolescence En : Enforcement
--	--	---	---

**Flood Control Project Maintenance
Levee Inspections**

Maintenance Issue Types Only, Levee Inspection Report By Mile - Spring 2018

Brannan Andrus Levee Maintenance District

Waterway	Bank	Unit Miles	Inspection Start/End	Inspector
Unit No. 02 Sacramento River	Left	11.54	04/05/2018 04/05/2018	Keith Millard

LM Start	2.54	Rating **	U	Issue No.	144
LM End	2.54	Issue Type +	Ma	Location *	
Category	Supplemental			GPS Latitude/Longitude	
				Start	End
Item	DWR UCIP LMA Responsibility			38.165980 °	38.165980 °
				-121.598520 °	-121.598520 °
DWR ID					
Comment Code					
Inspector Comment					
FS_ID:51314 DS_ID:21879 EP_NO: N/A Repair Type: Urgent Crossing Status: Found UCIP Comments: 10/24/2016 same as previous inspection culvert is open on both ends. WS blocked by blankets -- WS structure is being used as a shelter. (O. Magana - DWR UCIP)04/18/2013 Culvert open on both ends. Needs to be abandoned properly. (W. Wylie - DWR UCIP) FIELD_STRUCT_DESC: *ABANDONED* 42-inch by 42-inch open reinforced concrete drainage culvert through the levee, 6 feet below the crown. [Additional Reference(s): DWR Levee Log, 2005, 3-foot by 3.5-foot culvert listed. USACE Sacramento O&M Manual 103, June 1954, (RM 18.16) Drawing No. 6-13-1100]. FS Date: 10/24/2016					

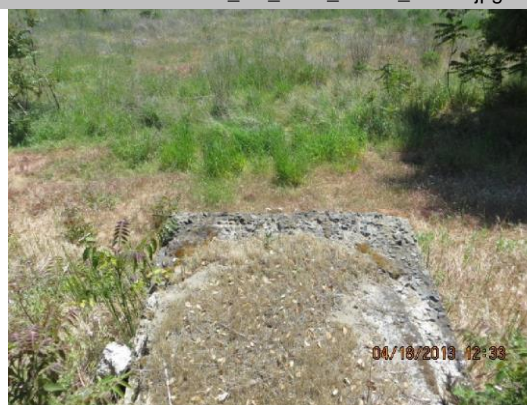
Photo 1 of 3 : UCIP_SP_2018_51314_19773.jpg



Concrete tunnel open on both ends.

LM Start	2.54	Rating **	U	Issue No.	144 (cont)
LM End	2.54	Issue Type +	Ma	Location *	

Photo 2 of 3 : UCIP_SP_2018_51314_19772.jpg



Top of concrete tunnel on LS shoulder.

* Location LS : Land Side N/A : Not Applicable WS : Water Side CR : Crown		** Rating A : Acceptable M : Minimally Acceptable U : Unacceptable		N : Not Inspected/Rated C : Corrected A/W : Acceptable but Monitor & Maintain		+ Issue Type Ma : Maintenance Deficiency Ob : Design & System Obsolescence En : Enforcement	
--	--	--	--	---	--	---	--

**Flood Control Project Maintenance
Levee Inspections**

Maintenance Issue Types Only, Levee Inspection Report By Mile - Spring 2018

Brannan Andrus Levee Maintenance District

Waterway	Bank	Unit Miles	Inspection Start/End	Inspector
Unit No. 02 Sacramento River	Left	11.54	04/05/2018 04/05/2018	Keith Millard

LM Start	2.54	Rating **	U	Issue No.	144 (cont)	
LM End	2.54	Issue Type +	Ma	Location *		
Category	Supplemental			GPS Latitude/Longitude		
				Start	End	
Item	DWR UCIP LMA Responsibility			38.165980 °	38.165980 °	
				-121.598520 °	-121.598520 °	
DWR ID						
Comment Code						
Inspector Comment						
FS_ID:51314 DS_ID:21879 EP_NO: N/A Repair Type: Urgent Crossing Status: Found UCIP Comments: 10/24/2016 same as previous inspection culvert is open on both ends. WS blocked by blankets -- WS structure is being used as a shelter. (O. Magana - DWR UCIP)04/18/2013 Culvert open on both ends. Needs to be abandoned properly. (W. Wylie - DWR UCIP) FIELD_STRUCT_DESC: *ABANDONED* 42-inch by 42-inch open reinforced concrete drainage culvert through the levee, 6 feet below the crown. [Additional Reference(s): DWR Levee Log, 2005, 3-foot by 3.5-foot culvert listed. USACE Sacramento O&M Manual 103, June 1954, (RM 18.16) Drawing No. 6-13-1100]. FS Date: 10/24/2016						

Photo 3 of 3 : UCIP_SP_2018_51314_19771.jpg



Concrete tunnel on LS shoulder.

LM Start	2.56	Rating **	M	Issue No.	82
LM End	2.56	Issue Type +	Ma	Location *	WS
Category	Earthen Levee			GPS Latitude/Longitude	
				Start	End
Item	Slope Stability			38.165898 °	38.165898 °
				-121.598888 °	-121.598888 °
DWR ID	DWR_NA0002_02_f_2017_82				
Comment Code					
S2 : Repair the levee slope damaged by foot traffic and prevent access where possible.					
Inspector Comment					

Photo 1 of 1 : SP_2018_NA0002_63_82_20180305_00056.jpg



Looking northwest at the waterside slope.

* Location LS : Land Side N/A : Not Applicable WS : Water Side CR : Crown		** Rating A : Acceptable M : Minimally Acceptable U : Unacceptable N : Not Inspected/Rated C : Corrected A/W : Acceptable but Monitor & Maintain		+ Issue Type Ma : Maintenance Deficiency Ob : Design & System Obsolescence En : Enforcement
--	--	---	--	---

**Flood Control Project Maintenance
Levee Inspections**

Maintenance Issue Types Only, Levee Inspection Report By Mile - Spring 2018

Brannan Andrus Levee Maintenance District

Waterway	Bank	Unit Miles	Inspection Start/End	Inspector
Unit No. 02 Sacramento River	Left	11.54	04/05/2018 04/05/2018	Keith Millard

LM Start	2.57	Rating **	U	Issue No.	145
LM End	2.57	Issue Type +	Ma	Location *	
Category	Supplemental			GPS Latitude/Longitude	
				Start	End
Item	DWR UCIP LMA Responsibility			38.165775 °	38.165775 °
				-121.599048 °	-121.599048 °
DWR ID					

Comment Code

Inspector Comment

FS_ID:51315
DS_ID:21880
EP_NO: N/A
Repair Type: Urgent
Crossing Status: Found
UCIP Comments: 10/24/2016 same as previous inspection concrete box culvert will need to be abandoned properly. (O. Magana - DWR UCIP)04/18/2013 tunnel should be abandoned properly. (W. Wylie - DWR UCIP)
FIELD_STRUCT_DESC: *ABANDONED* 48-inch by 48-inch reinforced concrete drainage culvert through the levee, 6.5-inches below the crown. [Additional Reference(s): DWR Levee Log, 2005. USACE Sacramento O&M Manual 103, June 1954, (RM 18.13) 3-foot by 3-foot concrete box listed, Drawing No. 6-13-1100].
FS Date: 10/24/2016

LM Start	2.57	Rating **	U	Issue No.	145 (cont)
LM End	2.57	Issue Type +	Ma	Location *	

Photo 1 of 3 : UCIP_SP_2018_51315_19776.jpg



Tunnel open on LS shoulder.

Photo 2 of 3 : UCIP_SP_2018_51315_19775.jpg



Concrete tunnel on LS shoulder.

* Location LS : Land Side N/A : Not Applicable WS : Water Side CR : Crown		** Rating A : Acceptable M : Minimally Acceptable U : Unacceptable		N : Not Inspected/Rated C : Corrected A/W : Acceptable but Monitor & Maintain		+ Issue Type Ma : Maintenance Deficiency Ob : Design & System Obsolescence En : Enforcement	
--	--	--	--	---	--	---	--

**Flood Control Project Maintenance
Levee Inspections**

Maintenance Issue Types Only, Levee Inspection Report By Mile - Spring 2018

Brannan Andrus Levee Maintenance District

Waterway	Bank	Unit Miles	Inspection Start/End	Inspector
Unit No. 02 Sacramento River	Left	11.54	04/05/2018 04/05/2018	Keith Millard

LM Start	2.57	Rating **	U	Issue No.	145 (cont)	
LM End	2.57	Issue Type +	Ma	Location *		
Category	Supplemental			GPS Latitude/Longitude		
				Start	End	
Item	DWR UCIP LMA Responsibility			38.165775 °	38.165775 °	
				-121.599048 °	-121.599048 °	
DWR ID						
Comment Code						
Inspector Comment						
FS_ID:51315						
DS_ID:21880						
EP_NO: N/A						
Repair Type: Urgent						
Crossing Status: Found						
UCIP Comments: 10/24/2016 same as previous inspection concrete box culvert will need to be abandoned properly. (O. Magana - DWR UCIP)04/18/2013 tunnel should be abandoned properly. (W. Wylie - DWR UCIP)						
FIELD_STRUCT_DESC: *ABANDONED* 48-inch by 48-inch reinforced concrete drainage culvert through the levee, 6.5-inches below the crown. [Additional Reference(s): DWR Levee Log, 2005. USACE Sacramento O&M Manual 103, June 1954, (RM 18.13) 3-foot by 3-foot concrete box listed, Drawing No. 6-13-1100].						
FS Date: 10/24/2016						

Photo 3 of 3 : UCIP_SP_2018_51315_19774.jpg



10'X5' concrete box on WS slope, filled with soil.

LM Start	2.58	Rating **	M	Issue No.	18
LM End	2.63	Issue Type +	Ma	Location *	WS
Category	Supplemental			GPS Latitude/Longitude	
				Start	End
Item	2015 USACE Erosion Survey, DRAFT			38.165945 °	38.165498 °
				-121.599345 °	-121.600080 °
DWR ID	DWR_NA0002_02_s_2016_18				
Comment Code					
Inspector Comment					
2009 - Short reach of vertical bank at the toe. 2010 - Large tree is getting ready to fall in. 2015: Freshly exposed tree roots. [2015 Site ID: SAC_18-1_L]					

No Photos

* Location LS : Land Side N/A : Not Applicable WS : Water Side CR : Crown		** Rating A : Acceptable M : Minimally Acceptable U : Unacceptable		N : Not Inspected/Rated C : Corrected A/W : Acceptable but Monitor & Maintain		+ Issue Type Ma : Maintenance Deficiency Ob : Design & System Obsolescence En : Enforcement	
--	--	--	--	---	--	---	--

**Flood Control Project Maintenance
Levee Inspections**

Maintenance Issue Types Only, Levee Inspection Report By Mile - Spring 2018

Brannan Andrus Levee Maintenance District

Waterway	Bank	Unit Miles	Inspection Start/End	Inspector
Unit No. 02 Sacramento River	Left	11.54	04/05/2018 04/05/2018	Keith Millard

LM Start	2.66	Rating **	M	Issue No.	37
LM End	2.74	Issue Type +	Ma	Location *	WS
Category	Supplemental			GPS Latitude/Longitude	
				Start	End
Item	2015 USACE Erosion Survey, DRAFT			38.165303 °	38.164682 °
				-121.600477 °	-121.601804 °
DWR ID	DWR_NA0002_02_s_2016_37				
Comment Code					
Inspector Comment					
2009 - Large scallop from rotational failure. One fallen tree and one large tree with half of its root structure exposed. 2015: Large tree expected to pop out within next couple of years, will take very large chunk of levee out. [2015 Site ID: SAC_18-0_L]					

Photo 1 of 2 : SP_2018_NA0002_63_37_20180305_00042.jpg



USACE 2013 Photo #1

LM Start	2.66	Rating **	M	Issue No.	37 (cont)
LM End	2.74	Issue Type +	Ma	Location *	WS

Photo 2 of 2 : SP_2018_NA0002_63_37_20180305_00043.jpg



USACE 2013 Photo #2

* Location LS : Land Side N/A : Not Applicable WS : Water Side CR : Crown		** Rating A : Acceptable N : Not Inspected/Rated M : Minimally Acceptable C : Corrected U : Unacceptable A/W : Acceptable but Monitor & Maintain		+ Issue Type Ma : Maintenance Deficiency Ob : Design & System Obsolescence En : Enforcement
--	--	---	--	---

**Flood Control Project Maintenance
Levee Inspections**

Maintenance Issue Types Only, Levee Inspection Report By Mile - Spring 2018

Brannan Andrus Levee Maintenance District

Waterway	Bank	Unit Miles	Inspection Start/End	Inspector
Unit No. 02 Sacramento River	Left	11.54	04/05/2018 04/05/2018	Keith Millard

LM Start	2.84	Rating **	U	Issue No.	147
LM End	2.84	Issue Type +	Ma	Location *	
Category	Supplemental			GPS Latitude/Longitude	
				Start	End
Item	DWR UCIP LMA Responsibility			38.163850 °	38.163850 °
				-121.603317 °	-121.603317 °
DWR ID					

Comment Code

Inspector Comment

FS_ID:51316
DS_ID:21882
EP_NO: N/A
Repair Type: Urgent
Crossing Status: Found
UCIP Comments: 10/24/2016 same as previous inspection tunnel is opened on both ends. (O. Magana - DWR UCIP)04/18/2013 Tunnel open on both ends and should be abandoned properly. (W. Wylie - DWR UCIP)
FIELD_STRUCT_DESC: *ABANDONED* 48-inch by 72-inch reinforced concrete drainage culvert through the levee, 1 foot below the crown.
[Additional Reference(s): DWR Levee Log, 2005, 4-foot by 4.5-foot culvert listed. USACE Sacramento O&M Manual 103, June 1954, (RM 17.89) 48-inch by 52-inch concrete box listed, Drawing No. 6-13-1100].
FS Date: 10/24/2016

LM Start	2.84	Rating **	U	Issue No.	147 (cont)
LM End	2.84	Issue Type +	Ma	Location *	

Photo 1 of 3 : UCIP_SP_2018_51316_19782.jpg



Entrance to tunnel on LS slope.

Photo 2 of 3 : UCIP_SP_2018_51316_19781.jpg



Tunnel opening on WS slope.

* Location	** Rating	+ Issue Type
LS : Land Side WS : Water Side CR : Crown	A : Acceptable M : Minimally Acceptable U : Unacceptable	Ma : Maintenance Deficiency Ob : Design & System Obsolescence En : Enforcement
N/A : Not Applicable	N : Not Inspected/Rated C : Corrected A/W : Acceptable but Monitor & Maintain	

**Flood Control Project Maintenance
Levee Inspections**

Maintenance Issue Types Only, Levee Inspection Report By Mile - Spring 2018

Brannan Andrus Levee Maintenance District

Waterway	Bank	Unit Miles	Inspection Start/End	Inspector
Unit No. 02 Sacramento River	Left	11.54	04/05/2018 04/05/2018	Keith Millard

LM Start	2.84	Rating **	U	Issue No.	147 (cont)	
LM End	2.84	Issue Type +	Ma	Location *		
Category	Supplemental			GPS Latitude/Longitude		
				Start	End	
Item	DWR UCIP LMA Responsibility			38.163850 °	38.163850 °	
				-121.603317 °	-121.603317 °	
DWR ID						
Comment Code						
Inspector Comment						
FS_ID:51316 DS_ID:21882 EP_NO: N/A Repair Type: Urgent Crossing Status: Found UCIP Comments: 10/24/2016 same as previous inspection tunnel is opened on both ends. (O. Magana - DWR UCIP)04/18/2013 Tunnel open on both ends and should be abandoned properly. (W. Wylie - DWR UCIP) FIELD_STRUCT_DESC: *ABANDONED* 48-inch by 72-inch reinforced concrete drainage culvert through the levee, 1 foot below the crown. [Additional Reference(s): DWR Levee Log, 2005, 4-foot by 4.5-foot culvert listed. USACE Sacramento O&M Manual 103, June 1954, (RM 17.89) 48-inch by 52-inch concrete box listed, Drawing No. 6-13-1100]. FS Date: 10/24/2016						

Photo 3 of 3 : UCIP_SP_2018_51316_19780.jpg



Tunnel opening on WS slope.

LM Start	3.17	Rating **	M	Issue No.	5
LM End	3.17	Issue Type +	Ma	Location *	WS
Category	Earthen Levee			GPS Latitude/Longitude	
				Start	End
Item	Trim / Thin Trees			38.162638 °	38.162638 °
				-121.609068 °	-121.609068 °
DWR ID	DWR_NA0002_02_s_2012_5				
Comment Code					
T4 : Trim trees over roadway to at least 12 feet above ground level.					
Inspector Comment					

Photo 1 of 2 : SP_2018_NA0002_63_5_20180305_00004.jpg



Looking west at overhanging tree on waterward shoulder. (Fall 2014)

* Location LS : Land Side N/A : Not Applicable WS : Water Side CR : Crown	** Rating A : Acceptable M : Minimally Acceptable U : Unacceptable	N : Not Inspected/Rated C : Corrected A/W : Acceptable but Monitor & Maintain	+ Issue Type Ma : Maintenance Deficiency Ob : Design & System Obsolescence En : Enforcement
--	--	---	---

**Flood Control Project Maintenance
Levee Inspections**

Maintenance Issue Types Only, Levee Inspection Report By Mile - Spring 2018

Brannan Andrus Levee Maintenance District

Waterway	Bank	Unit Miles	Inspection Start/End	Inspector
Unit No. 02 Sacramento River	Left	11.54	04/05/2018 04/05/2018	Keith Millard

LM Start	3.17	Rating **	M	Issue No.	5 (cont)	
LM End	3.17	Issue Type +	Ma	Location *	WS	
Category	Earthen Levee			GPS Latitude/Longitude		
				Start		End
Item	Trim / Thin Trees			38.162638 °		38.162638 °
				-121.609068 °		-121.609068 °
DWR ID	DWR_NA0002_02_s_2012_5					
Comment Code						
T4 : Trim trees over roadway to at least 12 feet above ground level.						
Inspector Comment						

Photo 2 of 2 : SP_2018_NA0002_63_5_20180305_00005.jpg



Looking west at overhanging tree on waterside shoulder.

LM Start	3.21	Rating **	C	Issue No.	83	
LM End	3.21	Issue Type +	Ma	Location *	LS	
Category	Earthen Levee			GPS Latitude/Longitude		
				Start		End
Item	Slope Stability			38.162635 °		38.162635 °
				-121.609869 °		-121.609869 °
DWR ID	DWR_NA0002_02_f_2017_83					
Comment Code						
S2 : Repair the levee slope damaged by foot traffic and prevent access where possible.						
Inspector Comment						

No Photos

LM Start	3.39	Rating **	M	Issue No.	100
LM End	3.42	Issue Type +	Ma	Location *	WS
Category	Earthen Levee			GPS Latitude/Longitude	
				Start	End
Item	Vegetation			38.162394 °	38.162432 °
				-121.613146 °	-121.613637 °
DWR ID	DWR_NA0002_02_s_2014_100				
Comment Code					
V2 : Remove the wild growth other than native grasses from the levee slopes.					
Inspector Comment					
Bamboo on waterside slope.					

Photo 1 of 1 : SP_2018_NA0002_63_100_20180305_00074.jpg



Looking southwest at vegetation (bamboo) on waterward slope.

* Location		** Rating		+ Issue Type	
LS : Land Side	N/A : Not Applicable	A : Acceptable	N : Not Inspected/Rated	Ma : Maintenance Deficiency	
WS : Water Side		M : Minimally Acceptable	C : Corrected	Ob : Design & System Obsolescence	
CR : Crown		U : Unacceptable	A/W : Acceptable but Monitor & Maintain	En : Enforcement	

**Flood Control Project Maintenance
Levee Inspections**

Maintenance Issue Types Only, Levee Inspection Report By Mile - Spring 2018

Brannan Andrus Levee Maintenance District

Waterway	Bank	Unit Miles	Inspection Start/End	Inspector
Unit No. 02 Sacramento River	Left	11.54	04/05/2018 04/05/2018	Keith Millard

LM Start	3.43	Rating **	U	Issue No.	34
LM End	3.56	Issue Type +	Ma	Location *	WS
Category	Supplemental		GPS Latitude/Longitude		
			Start	End	
Item	2015 USACE Erosion Survey, DRAFT		38.162459 °	38.162828 °	
			-121.613848 °	-121.616263 °	
DWR ID	DWR_NA0002_02_s_2016_34				

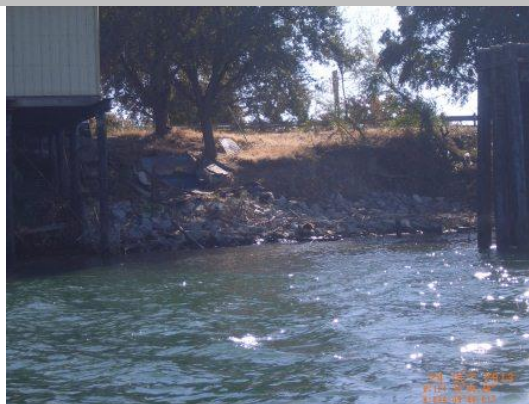
Comment Code

Inspector Comment

2009 - Fluvial erosion, into the levee slope, close to vertical bank with roadway on top. Pilings that were once at the bankline are now 30 ft out. 2010 - Very steep slope with slumps and overturned trees. 2011 - Upgraded to CRITICAL. Sections of vertical slope with highway on top. Heavy vegetation in front of most of the erosion pockets. Structures built into the levee on the upstream end. 2012 - Site continues to worsen. 2013 - Some rock added on the upstream end, but site remains critical. 2015: More rock has been placed in spots along the toe, but it is still insufficient. [2015 Site ID: SAC_17-2_L]

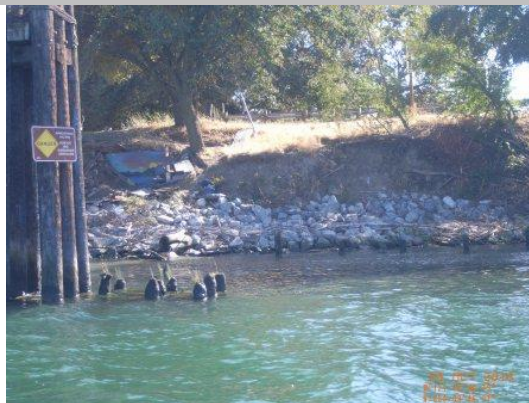
LM Start	3.43	Rating **	U	Issue No.	34 (cont)
LM End	3.56	Issue Type +	Ma	Location *	WS

Photo 1 of 2 : SP_2018_NA0002_63_34_20180305_00040.jpg



USACE 2013 Photo #1

Photo 2 of 2 : SP_2018_NA0002_63_34_20180305_00041.jpg



USACE 2013 Photo #2

* Location LS : Land Side N/A : Not Applicable WS : Water Side CR : Crown		** Rating A : Acceptable N : Not Inspected/Rated M : Minimally Acceptable C : Corrected U : Unacceptable A/W : Acceptable but Monitor & Maintain		+ Issue Type Ma : Maintenance Deficiency Ob : Design & System Obsolescence En : Enforcement
--	--	---	--	---

**Flood Control Project Maintenance
Levee Inspections**

Maintenance Issue Types Only, Levee Inspection Report By Mile - Spring 2018

Brannan Andrus Levee Maintenance District

Waterway	Bank	Unit Miles	Inspection Start/End	Inspector
Unit No. 02 Sacramento River	Left	11.54	04/05/2018 04/05/2018	Keith Millard

LM Start	3.52	Rating **	M	Issue No.	126
LM End	3.54	Issue Type +	Ma	Location *	WS
Category	Earthen Levee			GPS Latitude/Longitude	
				Start	End
Item	Trim / Thin Trees			38.162559 °	38.162597 °
				-121.615436 °	-121.615808 °
DWR ID	DWR_NA0002_02_f_2017_126				
Comment Code					
T2 : Thin trees to allow visibility of the ground and room to flood fight.					
Inspector Comment					

No Photos

LM Start	3.62	Rating **	C	Issue No.	20
LM End	3.73	Issue Type +	Ma	Location *	WS
Category	Supplemental			GPS Latitude/Longitude	
				Start	End
Item	2015 USACE Erosion Survey, DRAFT			38.162959 °	38.163334 °
				-121.617323 °	-121.619312 °
DWR ID	DWR_NA0002_02_s_2016_20				
Comment Code					
Inspector Comment					
2008 - Overstepped levee section with pocket erosion. Plans for repair currently in the design phase. 2010 - Very steep slope with slumps, longitudinal cracking, and overturned trees. 2011 - Upgraded to CRITICAL. Sections of vertical slope with highway on top. Heavy vegetation in front of most of the erosion pockets. 2015: New rock placed on the levee slope for most of the downstream end, but bad spots still remain. [2015 Site ID: SAC_16-8_L]					

No Photos

* Location LS : Land Side N/A : Not Applicable WS : Water Side CR : Crown	** Rating A : Acceptable M : Minimally Acceptable U : Unacceptable N : Not Inspected/Rated C : Corrected A/W : Acceptable but Monitor & Maintain	+ Issue Type Ma : Maintenance Deficiency Ob : Design & System Obsolescence En : Enforcement
--	---	---

**Flood Control Project Maintenance
Levee Inspections**

Maintenance Issue Types Only, Levee Inspection Report By Mile - Spring 2018

Brannan Andrus Levee Maintenance District

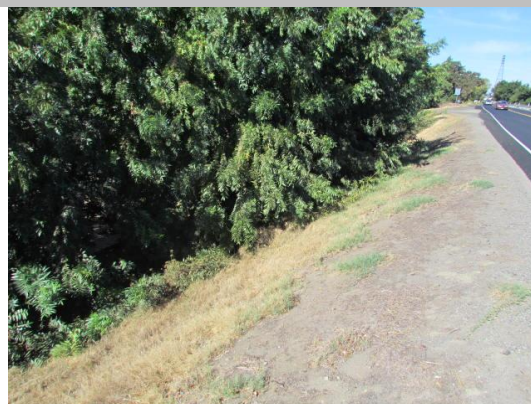
Waterway	Bank	Unit Miles	Inspection Start/End	Inspector
Unit No. 02 Sacramento River	Left	11.54	04/05/2018 04/05/2018	Keith Millard

LM Start	3.73	Rating **	M	Issue No.	114
LM End	3.73	Issue Type +	Ma	Location *	LS
Category	Earthen Levee			GPS Latitude/Longitude	
				Start	End
Item	Trim / Thin Trees			38.163163 °	38.163163 °
				-121.619370 °	-121.619370 °
DWR ID	DWR_NA0002_02_s _ 2016_114				
Comment Code					
T1 : Trim trees to at least five feet above ground level.					
Inspector Comment					

No Photos

LM Start	3.96	Rating **	U	Issue No.	102
LM End	3.96	Issue Type +	Ma	Location *	LS
Category	Earthen Levee			GPS Latitude/Longitude	
				Start	End
Item	Trim / Thin Trees			38.164246 °	38.164246 °
				-121.623272 °	-121.623272 °
DWR ID	DWR_NA0002_02_s _ 2014_102				
Comment Code					
T1 : Trim trees to at least five feet above ground level.					
Inspector Comment					
Untrimmed tree blocking landside slope and toe.					

Photo 1 of 1 : SP_2018_NA0002_63_102_20180305_00076.jpg



Looking west at dense trees on landward slope and toe.

LM Start	4.13	Rating **	M	Issue No.	85
LM End	4.13	Issue Type +	Ma	Location *	WS
Category	Earthen Levee			GPS Latitude/Longitude	
				Start	End
Item	Encroachments			38.165098 °	38.165098 °
				-121.626133 °	-121.626133 °
DWR ID	DWR_NA0002_02_s _ 2017_85				
Comment Code					
PR : Prunings					
Inspector Comment					

No Photos

* Location LS : Land Side N/A : Not Applicable WS : Water Side CR : Crown		** Rating A : Acceptable N : Not Inspected/Rated M : Minimally Acceptable C : Corrected U : Unacceptable A/W : Acceptable but Monitor & Maintain		+ Issue Type Ma : Maintenance Deficiency Ob : Design & System Obsolescence En : Enforcement	
--	--	---	--	---	--

**Flood Control Project Maintenance
Levee Inspections**

Maintenance Issue Types Only, Levee Inspection Report By Mile - Spring 2018

Brannan Andrus Levee Maintenance District

Waterway	Bank	Unit Miles	Inspection Start/End	Inspector
Unit No. 02 Sacramento River	Left	11.54	04/05/2018 04/05/2018	Keith Millard

LM Start	4.70	Rating **	M	Issue No.	87
LM End	4.70	Issue Type +	Ma	Location *	LS
Category	Earthen Levee			GPS Latitude/Longitude	
				Start	End
Item	Trim / Thin Trees			38.168342 °	38.168342 °
				-121.635645 °	-121.635645 °
DWR ID	DWR_NA0002_02_s_2017_87				
Comment Code					
T2 : Thin trees to allow visibility of the ground and room to flood fight.					
Inspector Comment					

No Photos

LM Start	4.70	Rating **	U	Issue No.	123
LM End	4.72	Issue Type +	Ma	Location *	WS
Category	Earthen Levee			GPS Latitude/Longitude	
				Start	End
Item	Vegetation			38.168348 °	38.168456 °
				-121.635726 °	-121.636125 °
DWR ID	DWR_NA0002_02_f_2016_123				
Comment Code					
V2 : Remove the wild growth other than native grasses from the levee slopes.					
Inspector Comment					
Dense grapevines on waterside slope.					

Photo 1 of 1 : SP_2018_NA0002_63_123_20180305_00099.jpg



Looking west at dense vines on waterward slope and toe.

* Location LS : Land Side N/A : Not Applicable WS : Water Side CR : Crown		** Rating A : Acceptable N : Not Inspected/Rated M : Minimally Acceptable C : Corrected U : Unacceptable A/W : Acceptable but Monitor & Maintain		+ Issue Type Ma : Maintenance Deficiency Ob : Design & System Obsolescence En : Enforcement
--	--	---	--	---

**Flood Control Project Maintenance
Levee Inspections**

Maintenance Issue Types Only, Levee Inspection Report By Mile - Spring 2018

Brannan Andrus Levee Maintenance District

Waterway	Bank	Unit Miles	Inspection Start/End	Inspector
Unit No. 02 Sacramento River	Left	11.54	04/05/2018 04/05/2018	Keith Millard

LM Start	4.92	Rating **	M	Issue No.	88
LM End	4.92	Issue Type +	Ma	Location *	LS
Category	Earthen Levee			GPS Latitude/Longitude	
				Start	End
Item	Encroachments			38.169262 °	38.169262 °
				-121.639497 °	-121.639497 °
DWR ID	DWR_NA0002_02_s_2017_88				
Comment Code					
TR : Tree or limb					
Inspector Comment					
Remove dead tree on landside slope.					

Photo 1 of 1 : SP_2018_NA0002_63_88_20180305_00058.jpg



Looking east at dead tree on landward slope and toe.

LM Start	5.16	Rating **	U	Issue No.	95
LM End	5.16	Issue Type +	Ma	Location *	LS
Category	Earthen Levee			GPS Latitude/Longitude	
				Start	End
Item	Trim / Thin Trees			38.171318 °	38.171318 °
				-121.643001 °	-121.643001 °
DWR ID	DWR_NA0002_02_f_2015_95				
Comment Code					
T1 : Trim trees to at least five feet above ground level.					
Inspector Comment					

Photo 1 of 1 : SP_2018_NA0002_63_95_20180305_00067.jpg



Looking west at untrimmed trees on landward slope.

LM Start	5.23	Rating **	U	Issue No.	9
LM End	5.42	Issue Type +	Ma	Location *	WS
Category	Earthen Levee			GPS Latitude/Longitude	
				Start	End
Item	Trim / Thin Trees			38.171942 °	38.171800 °
				-121.643975 °	-121.647447 °
DWR ID	DWR_NA0002_02_s_2012_9				
Comment Code					
T2 : Thin trees to allow visibility of the ground and room to flood fight.					
Inspector Comment					

Photo 1 of 3 : SP_2018_NA0002_63_9_20180305_00012.jpg



Looking northeast at dense trees on waterside slope and toe.

* Location
LS : Land Side N/A : Not Applicable
WS : Water Side
CR : Crown

** Rating
A : Acceptable N : Not Inspected/Rated
M : Minimally Acceptable C : Corrected
U : Unacceptable A/W : Acceptable but Monitor & Maintain

+ Issue Type
Ma : Maintenance Deficiency
Ob : Design & System Obsolescence
En : Enforcement

**Flood Control Project Maintenance
Levee Inspections**

Maintenance Issue Types Only, Levee Inspection Report By Mile - Spring 2018

Brannan Andrus Levee Maintenance District

Waterway	Bank	Unit Miles	Inspection Start/End	Inspector
Unit No. 02 Sacramento River	Left	11.54	04/05/2018 04/05/2018	Keith Millard

LM Start	5.23	Rating **	U	Issue No.	9 (cont)	
LM End	5.42	Issue Type +	Ma	Location *	WS	
Category	Earthen Levee			GPS Latitude/Longitude		
				Start	End	
Item	Trim / Thin Trees			38.171942°	38.171800°	
				-121.643975°	-121.647447°	
DWR ID	DWR_NA0002_02_s_2012_9					
Comment Code						
T2 : Thin trees to allow visibility of the ground and room to flood fight.						
Inspector Comment						

Photo 2 of 3 : SP_2018_NA0002_63_9_20180305_00013.jpg



Looking east at dense trees on waterward shoulder and slope.

LM Start	5.23	Rating **	U	Issue No.	9 (cont)
LM End	5.42	Issue Type +	Ma	Location *	WS

Photo 3 of 3 : SP_2018_NA0002_63_9_20180305_00014.jpg



Looking north at dense trees on waterward should and slope.

LM Start	5.25	Rating **	M	Issue No.	124
LM End	5.25	Issue Type +	Ma	Location *	LS
Category	Earthen Levee			GPS Latitude/Longitude	
				Start	End
Item	Animal Control			38.171928 °	38.171928 °
				-121.644455 °	-121.644455 °
DWR ID	DWR_NA0002_02_f_2017_124				
Comment Code					
A1 : Exterminate rodents and backfill and compact or grout burrows.					
Inspector Comment					

No Photos

* Location LS : Land Side N/A : Not Applicable WS : Water Side CR : Crown		** Rating A : Acceptable N : Not Inspected/Rated M : Minimally Acceptable C : Corrected U : Unacceptable A/W : Acceptable but Monitor & Maintain		+ Issue Type Ma : Maintenance Deficiency Ob : Design & System Obsolescence En : Enforcement
--	--	---	--	---

**Flood Control Project Maintenance
Levee Inspections**

Maintenance Issue Types Only, Levee Inspection Report By Mile - Spring 2018

Brannan Andrus Levee Maintenance District

Waterway	Bank	Unit Miles	Inspection Start/End	Inspector
Unit No. 02 Sacramento River	Left	11.54	04/05/2018 04/05/2018	Keith Millard

LM Start	5.41	Rating **	M	Issue No.	163 (cont)	
LM End	5.41	Issue Type +	Ma	Location *		
Category	Supplemental			GPS Latitude/Longitude		
				Start	End	
Item	DWR UCIP LMA Responsibility			38.171824 °	38.171824 °	
				-121.647265 °	-121.647265 °	
DWR ID						
Comment Code						
Inspector Comment						
FS_ID:12776						
DS_ID:21910						
EP_NO: 7089A						
Repair Type: Non-Urgent						
Crossing Status: Found						
UCIP Comments: Hole at LS toe over pipe possible sign of leakage.						
FIELD_STRUCT_DESC: 7-inch drainage pipe of an unknown material						
through the levee, 13 feet below the crown. Pump in pump house on						
the landside (LS). 1.5-inch galvanized steel electrical conduit at same						
location. 4-foot by 6-foot concrete distribution box off the LS toe next to						
pump house. [Additional Reference(s): DWR Levee Log, 2005. USACE						
Sacramento O&M Manual 102, April 1959, (RM 15.3) (Reclamation						
District No. 2067) steel pipe listed].						
FS Date: 5/2/2013						

Photo 3 of 3 : UCIP_SP_2018_12776_20752.jpg



Pipe under pier.

LM Start	5.58	Rating **	M	Issue No.	10
LM End	5.62	Issue Type +	Ma	Location *	WS
Category	Earthen Levee			GPS Latitude/Longitude	
				Start	End
Item	Trim / Thin Trees			38.172019 °	38.172238 °
				-121.650327 °	-121.651163 °
DWR ID	DWR_NA0002_02_s_2012_10				
Comment Code					
T1 : Trim trees to at least five feet above ground level.					
Inspector Comment					

No Photos

* Location LS : Land Side N/A : Not Applicable WS : Water Side CR : Crown	** Rating A : Acceptable M : Minimally Acceptable U : Unacceptable	N : Not Inspected/Rated C : Corrected A/W : Acceptable but Monitor & Maintain	+ Issue Type Ma : Maintenance Deficiency Ob : Design & System Obsolescence En : Enforcement
--	--	---	---

**Flood Control Project Maintenance
Levee Inspections**

Maintenance Issue Types Only, Levee Inspection Report By Mile - Spring 2018

Brannan Andrus Levee Maintenance District

Waterway	Bank	Unit Miles	Inspection Start/End	Inspector
Unit No. 02 Sacramento River	Left	11.54	04/05/2018 04/05/2018	Keith Millard

LM Start	5.65	Rating **	U	Issue No.	11
LM End	5.69	Issue Type +	Ma	Location *	WS
Category	Earthen Levee			GPS Latitude/Longitude	
				Start	End
Item	Vegetation			38.172308 °	38.172497 °
				-121.651552 °	-121.652243 °
DWR ID	DWR_NA0002_02_s_2012_11				
Comment Code					
V2 : Remove the wild growth other than native grasses from the levee slopes.					
Inspector Comment					
Bamboo on waterside slope.					

Photo 1 of 2 : SP_2018_NA0002_63_11_20180305_00015.jpg



Looking northwest at bambao on waterward slope. (Fall 2016)

LM Start	5.65	Rating **	U	Issue No.	11 (cont)
LM End	5.69	Issue Type +	Ma	Location *	WS

Photo 2 of 2 : SP_2018_NA0002_63_11_20180305_00016.jpg



Looking west at bamboo on waterward slope. (Spring 2016)

LM Start	5.66	Rating **	M	Issue No.	36
LM End	5.69	Issue Type +	Ma	Location *	LS
Category	Earthen Levee			GPS Latitude/Longitude	
				Start	End
Item	Trim / Thin Trees			38.172388 °	38.172512 °
				-121.651892 °	-121.652322 °
DWR ID	DWR_NA0002_02_s_2012_36				
Comment Code					
T1 : Trim trees to at least five feet above ground level.					
Inspector Comment					

No Photos

* Location		** Rating		+ Issue Type	
LS : Land Side	N/A : Not Applicable	A : Acceptable	N : Not Inspected/Rated	Ma : Maintenance Deficiency	
WS : Water Side		M : Minimally Acceptable	C : Corrected	Ob : Design & System Obsolescence	
CR : Crown		U : Unacceptable	A/W : Acceptable but Monitor & Maintain	En : Enforcement	

**Flood Control Project Maintenance
Levee Inspections**

Maintenance Issue Types Only, Levee Inspection Report By Mile - Spring 2018

Brannan Andrus Levee Maintenance District

Waterway	Bank	Unit Miles	Inspection Start/End	Inspector
Unit No. 02 Sacramento River	Left	11.54	04/05/2018 04/05/2018	Keith Millard

LM Start	5.77	Rating **	M	Issue No.	164
LM End	5.77	Issue Type +	Ma	Location *	
Category	Supplemental			GPS Latitude/Longitude	
				Start	End
Item	DWR UCIP LMA Responsibility			38.172940 °	38.172940 °
				-121.653700 °	-121.653700 °
DWR ID					

Comment Code

Inspector Comment

FS_ID:12778
DS_ID:21912
EP_NO: N/A
Repair Type: Non-Urgent
Crossing Status: Found
UCIP Comments: Pipe abandoned. Erosion on WS slope at location where pipe should be.
FIELD_STRUCT_DESC: *ABANDONED* 12-inch drainage pipe of an unknown material through the levee, 13 feet below the crown. Pump and gate valve in pump house at the landside (LS) toe. 1.5-inch electrical conduit along pipe at same location. 42-inch concrete standpipe at the LS toe. [Additional Reference(s): USACE Sacramento O&M Manual 102, April 1959, (RM 14.8) (Reclamation District No. 2067) steel pipe listed
FS Date: 5/2/2013

LM Start	5.77	Rating **	M	Issue No.	164 (cont)
LM End	5.77	Issue Type +	Ma	Location *	

Photo 1 of 3 : UCIP_SP_2018_12778_20762.jpg



Conduit at WS toe.

Photo 2 of 3 : UCIP_SP_2018_12778_20761.jpg



Erosion along pipe alignment at WS slope.

* Location LS : Land Side N/A : Not Applicable WS : Water Side CR : Crown		** Rating A : Acceptable N : Not Inspected/Rated M : Minimally Acceptable C : Corrected U : Unacceptable A/W : Acceptable but Monitor & Maintain		+ Issue Type Ma : Maintenance Deficiency Ob : Design & System Obsolescence En : Enforcement
--	--	---	--	---

**Flood Control Project Maintenance
Levee Inspections**

Maintenance Issue Types Only, Levee Inspection Report By Mile - Spring 2018

Brannan Andrus Levee Maintenance District

Waterway	Bank	Unit Miles	Inspection Start/End	Inspector
Unit No. 02 Sacramento River	Left	11.54	04/05/2018 04/05/2018	Keith Millard

LM Start	5.77	Rating **	M	Issue No.	164 (cont)	
LM End	5.77	Issue Type +	Ma	Location *		
Category	Supplemental			GPS Latitude/Longitude		
				Start		End
Item	DWR UCIP LMA Responsibility			38.172940 °		38.172940 °
				-121.653700 °		-121.653700 °
DWR ID						
Comment Code						
Inspector Comment						
FS_ID:12778 DS_ID:21912 EP_NO: N/A Repair Type: Non-Urgent Crossing Status: Found UCIP Comments: Pipe abandoned. Erosion on WS slope at location where pipe should be. FIELD_STRUCT_DESC: *ABANDONED* 12-inch drainage pipe of an unknown material through the levee, 13 feet below the crown. Pump and gate valve in pump house at the landside (LS) toe. 1.5-inch electrical conduit along pipe at same location. 42-inch concrete standpipe at the LS toe. [Additional Reference(s): USACE Sacramento O&M Manual 102, April 1959, (RM 14.8) (Reclamation District No. 2067) steel pipe listed FS Date: 5/2/2013						

Photo 3 of 3 : UCIP_SP_2018_12778_20760.jpg



Concrete standpipe and pump on LS toe.

LM Start	6.12	Rating **	M	Issue No.	103
LM End	6.12	Issue Type +	Ma	Location *	LS
Category	Earthen Levee			GPS Latitude/Longitude	
				Start	End
Item	Vegetation			38.174670 °	38.174670 °
				-121.659592 °	-121.659592 °
DWR ID	DWR_NA0002_02_f_2015_103				
Comment Code					
V4 : Elderberries are blocking visibility and flood fight capability.					
Inspector Comment					

No Photos

* Location LS : Land Side N/A : Not Applicable WS : Water Side CR : Crown	** Rating A : Acceptable M : Minimally Acceptable U : Unacceptable	N : Not Inspected/Rated C : Corrected A/W : Acceptable but Monitor & Maintain	+ Issue Type Ma : Maintenance Deficiency Ob : Design & System Obsolescence En : Enforcement
--	--	---	---

**Flood Control Project Maintenance
Levee Inspections**

Maintenance Issue Types Only, Levee Inspection Report By Mile - Spring 2018

Brannan Andrus Levee Maintenance District

Waterway	Bank	Unit Miles	Inspection Start/End	Inspector
Unit No. 02 Sacramento River	Left	11.54	04/05/2018 04/05/2018	Keith Millard

LM Start	6.36	Rating **	U	Issue No.	14
LM End	6.36	Issue Type +	Ma	Location *	LS
Category	Earthen Levee			GPS Latitude/Longitude	
				Start	End
Item	Trim / Thin Trees			38.173406 °	38.173406 °
				-121.663815 °	-121.663815 °
DWR ID	DWR_NA0002_02_s_2012_14				
Comment Code					
T1 : Trim trees to at least five feet above ground level.					
Inspector Comment					

Photo 1 of 2 : SP_2018_NA0002_63_14_20180305_00020.jpg



LM Start	6.36	Rating **	U	Issue No.	14 (cont)
LM End	6.36	Issue Type +	Ma	Location *	LS

Photo 2 of 2 : SP_2018_NA0002_63_14_20180305_00021.jpg



Looking east at untrimmed tree on landward slope.

LM Start	6.98	Rating **	M	Issue No.	23
LM End	7.04	Issue Type +	Ma	Location *	WS
Category	Supplemental			GPS Latitude/Longitude	
				Start	End
Item	2015 USACE Erosion Survey, DRAFT			38.166583 °	38.165794 °
				-121.670684 °	-121.671014 °
DWR ID	DWR_NA0002_02_s_2016_23				
Comment Code					
Inspector Comment					
2011 - Large section of bank slumped off. 2015: No observed changes. [2015 Site ID: SAC_13-6_L]					

Photo 1 of 1 : SP_2018_NA0002_63_23_20180305_00028.jpg



USACE 2013 Photo #1

* Location		** Rating		+ Issue Type	
LS : Land Side	N/A : Not Applicable	A : Acceptable	N : Not Inspected/Rated	Ma : Maintenance Deficiency	
WS : Water Side		M : Minimally Acceptable	C : Corrected	Ob : Design & System Obsolescence	
CR : Crown		U : Unacceptable	A/W : Acceptable but Monitor & Maintain	En : Enforcement	

**Flood Control Project Maintenance
Levee Inspections**

Maintenance Issue Types Only, Levee Inspection Report By Mile - Spring 2018

Brannan Andrus Levee Maintenance District

Waterway	Bank	Unit Miles	Inspection Start/End	Inspector
Unit No. 02 Sacramento River	Left	11.54	04/05/2018 04/05/2018	Keith Millard

LM Start	7.13	Rating **	U	Issue No.	112
LM End	7.13	Issue Type +	Ma	Location *	LS
Category	Earthen Levee			GPS Latitude/Longitude	
				Start	End
Item	Trim / Thin Trees			38.164465 °	38.164465 °
				-121.671292 °	-121.671292 °
DWR ID	DWR_NA0002_02_f_2015_112				
Comment Code					
T1 : Trim trees to at least five feet above ground level.					
Inspector Comment					

Photo 1 of 1 : SP_2018_NA0002_63_112_20180305_00089.jpg



Looking south at untrimmed trees on landward slope.

LM Start	7.26	Rating **	M	Issue No.	104
LM End	7.26	Issue Type +	Ma	Location *	WS
Category	Earthen Levee			GPS Latitude/Longitude	
				Start	End
Item	Trim / Thin Trees			38.162735 °	38.162735 °
				-121.672224 °	-121.672224 °
DWR ID	DWR_NA0002_02_f_2017_104				
Comment Code					
T2 : Thin trees to allow visibility of the ground and room to flood fight.					
Inspector Comment					

No Photos

LM Start	7.71	Rating **	M	Issue No.	105
LM End	7.71	Issue Type +	Ma	Location *	WS
Category	Earthen Levee			GPS Latitude/Longitude	
				Start	End
Item	Encroachments			38.157841 °	38.157841 °
				-121.677510 °	-121.677510 °
DWR ID	DWR_NA0002_02_f_2014_105				
Comment Code					
TR : Tree or limb					
Inspector Comment					
Tree limbs on waterside shoulder.					

Photo 1 of 1 : SP_2018_NA0002_63_105_20180305_00077.jpg



Looking southwest at tree limbs on waterward shoulder.

*** Location**
LS : Land Side N/A : Not Applicable
WS : Water Side
CR : Crown

**** Rating**
A : Acceptable N : Not Inspected/Rated
M : Minimally Acceptable C : Corrected
U : Unacceptable A/W : Acceptable but Monitor & Maintain

+ Issue Type
Ma : Maintenance Deficiency
Ob : Design & System Obsolescence
En : Enforcement

**Flood Control Project Maintenance
Levee Inspections**

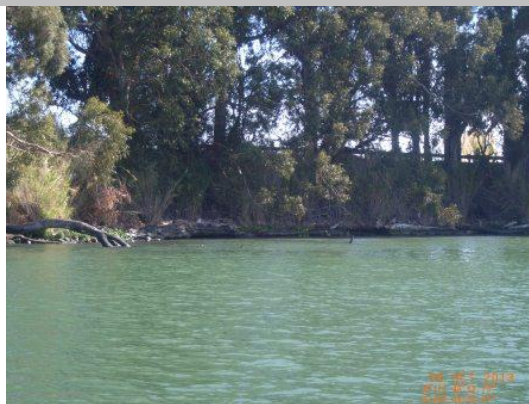
Maintenance Issue Types Only, Levee Inspection Report By Mile - Spring 2018

Brannan Andrus Levee Maintenance District

Waterway	Bank	Unit Miles	Inspection Start/End	Inspector
Unit No. 02 Sacramento River	Left	11.54	04/05/2018 04/05/2018	Keith Millard

LM Start	8.20	Rating **	U	Issue No.	17
LM End	8.42	Issue Type +	Ma	Location *	WS
Category	Supplemental			GPS Latitude/Longitude	
				Start	End
Item	2015 USACE Erosion Survey, DRAFT			38.151867 °	38.148711 °
				-121.682201 °	-121.682790 °
DWR ID	DWR_NA0002_02_s _ 2016_17				
Comment Code					
Inspector Comment					
2010 - Small inlet area behind a man-built spit. Bank is slumping and could possibly be fixed with maintenance. 2011 - Site continues to worsen. 2015: Upgraded to Critical [2015 Site ID: SAC_12-1_L]					

Photo 1 of 1 : SP_2018_NA0002_63_17_20180305_00024.jpg



USACE 2013 Photo #1

LM Start	8.31	Rating **	C	Issue No.	106
LM End	8.31	Issue Type +	Ma	Location *	LS
Category	Earthen Levee			GPS Latitude/Longitude	
				Start	End
Item	Encroachments			38.150208 °	38.150208 °
				-121.682130 °	-121.682130 °
DWR ID	DWR_NA0002_02_s _ 2017_106				
Comment Code					
TR : Tree or limb					
Inspector Comment					
Several fallen trees and prunings on landside slope. Tree left hole on landside slope.					

No Photos

* Location LS : Land Side N/A : Not Applicable WS : Water Side CR : Crown		** Rating A : Acceptable N : Not Inspected/Rated M : Minimally Acceptable C : Corrected U : Unacceptable A/W : Acceptable but Monitor & Maintain		+ Issue Type Ma : Maintenance Deficiency Ob : Design & System Obsolescence En : Enforcement
--	--	---	--	---

**Flood Control Project Maintenance
Levee Inspections**

Maintenance Issue Types Only, Levee Inspection Report By Mile - Spring 2018

Brannan Andrus Levee Maintenance District

Waterway	Bank	Unit Miles	Inspection Start/End	Inspector
Unit No. 02 Sacramento River	Left	11.54	04/05/2018 04/05/2018	Keith Millard

LM Start	8.32	Rating **	C	Issue No.	44
LM End	8.62	Issue Type +	Ma	Location *	LS
Category	Earthen Levee			GPS Latitude/Longitude	
				Start	End
Item	Trim / Thin Trees			38.150112 °	38.145826 °
				-121.682305 °	-121.682974 °
DWR ID	DWR_NA0002_02_s _ 2012_44				
Comment Code					
T1 : Trim trees to at least five feet above ground level.					
Inspector Comment					
Dense eucalyptus trees along landside slope.					

No Photos

LM Start	8.65	Rating **	C	Issue No.	48
LM End	8.86	Issue Type +	Ma	Location *	LS
Category	Earthen Levee			GPS Latitude/Longitude	
				Start	End
Item	Trim / Thin Trees			38.145368°	38.142430°
				-121.683072°	-121.683978°
DWR ID	DWR_NA0002_02_s _ 2013_48				
Comment Code					
T1 : Trim trees to at least five feet above ground level.					
Inspector Comment					

No Photos

LM Start	8.90	Rating **	C	Issue No.	47
LM End	8.90	Issue Type +	Ma	Location *	LS
Category	Earthen Levee			GPS Latitude/Longitude	
				Start	End
Item	Trim / Thin Trees			38.141928°	38.141928°
				-121.684308°	-121.684308°
DWR ID	DWR_NA0002_02_s _ 2013_47				
Comment Code					
T1 : Trim trees to at least five feet above ground level.					
Inspector Comment					

No Photos

* Location LS : Land Side N/A : Not Applicable WS : Water Side CR : Crown		** Rating A : Acceptable N : Not Inspected/Rated M : Minimally Acceptable C : Corrected U : Unacceptable A/W : Acceptable but Monitor & Maintain		+ Issue Type Ma : Maintenance Deficiency Ob : Design & System Obsolescence En : Enforcement	
--	--	---	--	---	--

**Flood Control Project Maintenance
Levee Inspections**

Maintenance Issue Types Only, Levee Inspection Report By Mile - Spring 2018

Brannan Andrus Levee Maintenance District

Waterway	Bank	Unit Miles	Inspection Start/End	Inspector
Unit No. 02 Sacramento River	Left	11.54	04/05/2018 04/05/2018	Keith Millard

LM Start	8.96	Rating **	U	Issue No.	19
LM End	9.18	Issue Type +	Ma	Location *	WS
Category	Supplemental			GPS Latitude/Longitude	
				Start	End
Item	2015 USACE Erosion Survey, DRAFT			38.141399 °	38.138158 °
				-121.685346 °	-121.686531 °
DWR ID	DWR_NA0002_02_s_2016_19				
Comment Code					
Inspector Comment					
2008 - Erosion causing vertical bank at the highway on top of levee. The whole bank along the highway should be repaired. 2009 - Minimal new erosion. 2011 - Bank continues to slowly erode. 2012 - Upgrade to critical, new erosion since lat year and steeper slopes in sections. 2015: Road foundation and cables exposed. Extremely large tree with exposed roots looks likely to fail and take out a significant portion of the levee. [2015 Site ID: SAC_11-2_L]					

Photo 1 of 1 : SP_2018_NA0002_63_19_20180305_00025.jpg



USACE 2013 Photo #1

LM Start	9.24	Rating **	M	Issue No.	118
LM End	9.27	Issue Type +	Ma	Location *	WS
Category	Earthen Levee			GPS Latitude/Longitude	
				Start	End
Item	Vegetation			38.137189 °	38.136837 °
				-121.686302 °	-121.686273 °
DWR ID	DWR_NA0002_02_f_2017_118				
Comment Code					
V2 : Remove the wild growth other than native grasses from the levee slopes.					
Inspector Comment					

No Photos

* Location LS : Land Side N/A : Not Applicable WS : Water Side CR : Crown		** Rating A : Acceptable N : Not Inspected/Rated M : Minimally Acceptable C : Corrected U : Unacceptable A/W : Acceptable but Monitor & Maintain		+ Issue Type Ma : Maintenance Deficiency Ob : Design & System Obsolescence En : Enforcement
--	--	---	--	---

**Flood Control Project Maintenance
Levee Inspections**

Maintenance Issue Types Only, Levee Inspection Report By Mile - Spring 2018

Brannan Andrus Levee Maintenance District

Waterway	Bank	Unit Miles	Inspection Start/End	Inspector
Unit No. 02 Sacramento River	Left	11.54	04/05/2018 04/05/2018	Keith Millard

LM Start	9.27	Rating **	M	Issue No.	122
LM End	9.29	Issue Type +	Ma	Location *	LS
Category	Earthen Levee			GPS Latitude/Longitude	
				Start	End
Item	Vegetation			38.136814 °	38.136499 °
				-121.686181 °	-121.686162 °
DWR ID	DWR_NA0002_02_f_2017_122				
Comment Code					
V2 : Remove the wild growth other than native grasses from the levee slopes.					
Inspector Comment					

No Photos

LM Start	9.36	Rating **	M	Issue No.	175
LM End	9.36	Issue Type +	Ma	Location *	
Category	Supplemental			GPS Latitude/Longitude	
				Start	End
Item	DWR UCIP LMA Responsibility			38.135584 °	38.135584 °
				-121.686108 °	-121.686108 °
DWR ID					
Comment Code					
Inspector Comment					
FS_ID:40528 DS_ID:21931 EP_NO: 16011 Repair Type: Non-Urgent Crossing Status: Found UCIP Comments: Annular space between pipes should be grouted. IF abandoned, these pipes should be abandoned properly. FIELD_STRUCT_DESC: 18-inch corrugated metal conduit pipe through the levee, 4.5 feet below the crown. Inactive 12-inch pipe sleeved through 18-inch. Both ends open. Siphon breaker and air valve in 24-inch corrugated metal riser unit on the landside (LS) shoulder. 9-foot by 5-foot concrete box with slide gate off LS toe. [Additional Reference(s): DWR Levee Log, 2005. USACE Sacramento O&M Manual 102, April 1959, (RM 10.9) (Reclamation District No. 2067) steel pipe listed]. FS Date: 5/3/2013					

Photo 1 of 3 : UCIP_SP_2018_40528_21002.jpg



Pipe on WS slope.

* Location	** Rating	+ Issue Type
LS : Land Side WS : Water Side CR : Crown	A : Acceptable M : Minimally Acceptable U : Unacceptable	Ma : Maintenance Deficiency Ob : Design & System Obsolescence En : Enforcement
	N : Not Inspected/Rated C : Corrected A/W : Acceptable but Monitor & Maintain	

**Flood Control Project Maintenance
Levee Inspections**

Maintenance Issue Types Only, Levee Inspection Report By Mile - Spring 2018

Brannan Andrus Levee Maintenance District

Waterway	Bank	Unit Miles	Inspection Start/End	Inspector
Unit No. 02 Sacramento River	Left	11.54	04/05/2018 04/05/2018	Keith Millard

LM Start	9.36	Rating **	M	Issue No.	175 (cont)
LM End	9.36	Issue Type +	Ma	Location *	
Category	Supplemental			GPS Latitude/Longitude	
				Start	End
Item	DWR UCIP LMA Responsibility			38.135584 °	38.135584 °
				-121.686108 °	-121.686108 °
DWR ID					

Comment Code

Inspector Comment

FS_ID:40528
DS_ID:21931
EP_NO: 16011
Repair Type: Non-Urgent
Crossing Status: Found
UCIP Comments: Annular space between pipes should be grouted. IF abandoned, these pipes should be abandoned properly.
FIELD_STRUCT_DESC: 18-inch corrugated metal conduit pipe through the levee, 4.5 feet below the crown. Inactive 12-inch pipe sleeved through 18-inch. Both ends open. Siphon breaker and air valve in 24-inch corrugated metal riser unit on the landside (LS) shoulder. 9-foot by 5-foot concrete box with slide gate off LS toe. [Additional Reference(s): DWR Levee Log, 2005. USACE Sacramento O&M Manual 102, April 1959, (RM 10.9) (Reclamation District No. 2067) steel pipe listed].
FS Date: 5/3/2013

LM Start	9.36	Rating **	M	Issue No.	175 (cont)
LM End	9.36	Issue Type +	Ma	Location *	

Photo 2 of 3 : UCIP_SP_2018_40528_21001.jpg



18-inch CMP with 12-inch irrigation pipe sleeved through it.

Photo 3 of 3 : UCIP_SP_2018_40528_21000.jpg



Standpipe and concrete box at LS.

* Location LS : Land Side N/A : Not Applicable WS : Water Side CR : Crown		** Rating A : Acceptable M : Minimally Acceptable U : Unacceptable N : Not Inspected/Rated C : Corrected A/W : Acceptable but Monitor & Maintain		+ Issue Type Ma : Maintenance Deficiency Ob : Design & System Obsolescence En : Enforcement
--	--	---	--	---

**Flood Control Project Maintenance
Levee Inspections**

Maintenance Issue Types Only, Levee Inspection Report By Mile - Spring 2018

Brannan Andrus Levee Maintenance District

Waterway	Bank	Unit Miles	Inspection Start/End	Inspector
Unit No. 02 Sacramento River	Left	11.54	04/05/2018 04/05/2018	Keith Millard

LM Start	9.58	Rating **	U	Issue No.	16
LM End	9.71	Issue Type +	Ma	Location *	WS
Category	Earthen Levee			GPS Latitude/Longitude	
				Start	End
Item	Trim / Thin Trees			38.132361 °	38.130537 °
				-121.686173 °	-121.686737 °
DWR ID	DWR_NA0002_02_s_2012_16				
Comment Code					
T3 : Trim and thin trees to allow visibility of the ground and room to flood fight.					
Inspector Comment					
Untrimmed trees within twenty foot zone on waterside slope.					

LM Start	9.58	Rating **	U	Issue No.	16 (cont)
LM End	9.71	Issue Type +	Ma	Location *	WS

Photo 1 of 2 : SP_2018_NA0002_63_16_20180305_00022.jpg



Looking south at dense vegetation (trees) on waterward slope.

Photo 2 of 2 : SP_2018_NA0002_63_16_20180305_00023.jpg



Looking north at dense vegetation (trees) on waterward slope.

* Location LS : Land Side N/A : Not Applicable WS : Water Side CR : Crown		** Rating A : Acceptable N : Not Inspected/Rated M : Minimally Acceptable C : Corrected U : Unacceptable A/W : Acceptable but Monitor & Maintain		+ Issue Type Ma : Maintenance Deficiency Ob : Design & System Obsolescence En : Enforcement
--	--	---	--	---

**Flood Control Project Maintenance
Levee Inspections**

Maintenance Issue Types Only, Levee Inspection Report By Mile - Spring 2018

Brannan Andrus Levee Maintenance District

Waterway	Bank	Unit Miles	Inspection Start/End	Inspector
Unit No. 02 Sacramento River	Left	11.54	04/05/2018 04/05/2018	Keith Millard

LM Start	9.78	Rating **	M	Issue No.	21
LM End	9.93	Issue Type +	Ma	Location *	WS
Category	Supplemental			GPS Latitude/Longitude	
				Start	End
Item	2015 USACE Erosion Survey, DRAFT			38.129722 °	38.127672 °
				-121.687468 °	-121.688646 °
DWR ID	DWR_NA0002_02_s_2016_21				
Comment Code					
Inspector Comment					
2004 - Wave wash pockets approximately 100 ft long with new full bank rock between the pockets. 2005 - Spot repairs, but toe is still eroding in several places. 2006 - Low vertical bank along roadway. 2007 - A PL 84-99 repair was constructed, it cover the majority of the site with the exception of the upstream 150 to 200 ft and the downstream 250 ft, therefore it is being kept in the inventory. 2009 - Minimal new erosion. 2010 - Outboard berm looks good, but the banks are still very steep. 2011 - While the outboard berm is protecting against wave wash, bank still has slumping issues. 2015: No observed changes. [2015 Site ID: SAC_10-8_L]					

Photo 1 of 1 : SP_2018_NA0002_63_21_20180305_00027.jpg



USACE 2013 Photo #1

LM Start	10.26	Rating **	U	Issue No.	107
LM End	11.10	Issue Type +	Ma	Location *	WS
Category	Earthen Levee			GPS Latitude/Longitude	
				Start	End
Item	Vegetation			38.123119 °	38.112414 °
				-121.690488 °	-121.697904 °
DWR ID	DWR_NA0002_02_f_2014_107				
Comment Code					
V2 : Remove the wild growth other than native grasses from the levee slopes.					
Inspector Comment					
Vegetation on waterside slope.					

Photo 1 of 2 : SP_2018_NA0002_63_107_20180305_00082.jpg



Looking south at bamboo and other vegetation on waterward slope. (Fall 2016)

* Location LS : Land Side N/A : Not Applicable WS : Water Side CR : Crown		** Rating A : Acceptable M : Minimally Acceptable U : Unacceptable N : Not Inspected/Rated C : Corrected A/W : Acceptable but Monitor & Maintain		+ Issue Type Ma : Maintenance Deficiency Ob : Design & System Obsolescence En : Enforcement	
---	--	--	--	--	--

**Flood Control Project Maintenance
Levee Inspections**

Maintenance Issue Types Only, Levee Inspection Report By Mile - Spring 2018

Brannan Andrus Levee Maintenance District

Waterway	Bank	Unit Miles	Inspection Start/End	Inspector
Unit No. 02 Sacramento River	Left	11.54	04/05/2018 04/05/2018	Keith Millard

LM Start	10.26	Rating **	U	Issue No.	107 (cont)
LM End	11.10	Issue Type +	Ma	Location *	WS
Category	Earthen Levee			GPS Latitude/Longitude	
				Start	End
Item	Vegetation			38.123119 °	38.112414 °
				-121.690488 °	-121.697904 °
DWR ID	DWR_NA0002_02_f_2014_107				
Comment Code					
V2 : Remove the wild growth other than native grasses from the levee slopes.					
Inspector Comment					
Vegetation on waterside slope.					

Photo 2 of 2 : SP_2018_NA0002_63_107_20180305_00083.jpg



Looking south at dense vegetation on waterward slope. (Fall 2015)

LM Start	10.28	Rating **	C	Issue No.	113
LM End	10.28	Issue Type +	Ma	Location *	WS
Category	Earthen Levee			GPS Latitude/Longitude	
				Start	End
Item	Erosion / Bank Caving			38.122904 °	38.122904 °
				-121.690819 °	-121.690819 °
DWR ID	DWR_NA0002_02_f_2015_113				
Comment Code					
E2 : Schedule repair of erosion site prior to the next inspection.					
Inspector Comment					
Bank erosion on waterside shoulder greater than 3" depth but less than 3' in length.					

No Photos

LM Start	10.74	Rating **	M	Issue No.	119
LM End	10.74	Issue Type +	Ma	Location *	WS
Category	Earthen Levee			GPS Latitude/Longitude	
				Start	End
Item	Erosion / Bank Caving			38.116906 °	38.116906 °
				-121.694595 °	-121.694595 °
DWR ID	DWR_NA0002_02_f_2017_119				
Comment Code					
E2 : Schedule repair of erosion site prior to the next inspection.					
Inspector Comment					

Photo 1 of 1 : SP_2018_NA0002_63_119_20180305_00097.jpg



Looking northwest at the waterside slope.

*** Location**

LS : Land Side N/A : Not Applicable
WS : Water Side
CR : Crown

**** Rating**

A : Acceptable N : Not Inspected/Rated
M : Minimally Acceptable C : Corrected
U : Unacceptable A/W : Acceptable but Monitor & Maintain

+ Issue Type

Ma : Maintenance Deficiency
Ob : Design & System Obsolescence
En : Enforcement

**Flood Control Project Maintenance
Levee Inspections**

Maintenance Issue Types Only, Levee Inspection Report By Mile - Spring 2018

Brannan Andrus Levee Maintenance District

Waterway	Bank	Unit Miles	Inspection Start/End	Inspector
Unit No. 02 Sacramento River	Left	11.54	04/05/2018 04/05/2018	Keith Millard

* Location LS : Land Side N/A : Not Applicable WS : Water Side CR : Crown	** Rating A : Acceptable N : Not Inspected/Rated M : Minimally Acceptable C : Corrected U : Unacceptable A/W : Acceptable but Monitor & Maintain	+ Issue Type Ma : Maintenance Deficiency Ob : Design & System Obsolescence En : Enforcement
--	---	---