

**Flood Control Project Maintenance
Levee Inspections**

Maintenance Issue Types Only, Levee Inspection Report By Mile - Spring 2017

Brannan Andrus Levee Maintenance District

Waterway	Bank	Unit Miles	Inspection Start/End	Inspector
Unit No. 01 Georgiana Slough	Right	6.01	03/21/2017 03/21/2017	Richard Willoughby

LM Start		Rating **	A	Issue No.	27
LM End		Issue Type +	Ma	Location *	N/A
Category	Earthen Levee		GPS Latitude/Longitude		
			Start	End	
Item	Flood Preparedness & Training			°	°
				°	°
DWR ID	DWR_NA0002_01_s _ 2012_27				
Comment Code					
Inspector Comment					
LMA is prepared to respond to a flood emergency.					

No Photos

LM Start		Rating **	A	Issue No.	32
LM End		Issue Type +	Ma	Location *	N/A
Category	Earthen Levee		GPS Latitude/Longitude		
			Start	End	
Item	Operations & Maintenance Manuals			°	°
				°	°
DWR ID	DWR_NA0002_01_s _ 2013_32				
Comment Code					
Inspector Comment					
The LMA maintains a copy of the O&M manual on file at district office.					

No Photos

* Location LS : Land Side N/A : Not Applicable WS : Water Side CR : Crown	** Rating A : Acceptable M : Minimally Acceptable U : Unacceptable	N : Not Inspected/Rated C : Corrected A/W : Acceptable but Monitor & Maintain	+ Issue Type Ma : Maintenance Deficiency Ob : Design & System Obsolescence En : Enforcement
--	--	---	---

**Flood Control Project Maintenance
Levee Inspections**

Maintenance Issue Types Only, Levee Inspection Report By Mile - Spring 2017

Brannan Andrus Levee Maintenance District

Waterway	Bank	Unit Miles	Inspection Start/End	Inspector
Unit No. 01 Georgiana Slough	Right	6.01	03/21/2017 03/21/2017	Richard Willoughby

LM Start		Rating **	A	Issue No.	33
LM End		Issue Type +	Ma	Location *	N/A
Category	Earthen Levee		GPS Latitude/Longitude		
			Start	End	
Item	Emergency Supplies & Equipment			°	°
			°		°
DWR ID	DWR_NA0002_01_s _ 2013_33				
Comment Code					
Inspector Comment					
LMA maintains an adequate amount of flood fight supplies and equipment for flood response.					

No Photos

LM Start	0.02	Rating **	M	Issue No.	59
LM End	6.00	Issue Type +	Ma	Location *	LS
Category	Earthen Levee		GPS Latitude/Longitude		
			Start	End	
Item	Vegetation		38.186340 °	38.129627 °	
			-121.562992 °	-121.578757 °	
DWR ID	DWR_NA0002_01_s _ 2017_59				
Comment Code					
V1 : Control annual grass and weeds on the levee slopes and easements.					
Inspector Comment					

No Photos

LM Start	0.02	Rating **	M	Issue No.	64
LM End	6.00	Issue Type +	Ma	Location *	WS
Category	Earthen Levee		GPS Latitude/Longitude		
			Start	End	
Item	Vegetation		38.186340 °	38.129627 °	
			-121.562992 °	-121.578757 °	
DWR ID	DWR_NA0002_01_s _ 2017_64				
Comment Code					
V1 : Control annual grass and weeds on the levee slopes and easements.					
Inspector Comment					

No Photos

* Location LS : Land Side N/A : Not Applicable WS : Water Side CR : Crown	** Rating A : Acceptable M : Minimally Acceptable U : Unacceptable	N : Not Inspected/Rated C : Corrected A/W : Acceptable but Monitor & Maintain	+ Issue Type Ma : Maintenance Deficiency Ob : Design & System Obsolescence En : Enforcement
--	--	---	---

**Flood Control Project Maintenance
Levee Inspections**

Maintenance Issue Types Only, Levee Inspection Report By Mile - Spring 2017

Brannan Andrus Levee Maintenance District

Waterway	Bank	Unit Miles	Inspection Start/End	Inspector
Unit No. 01 Georgiana Slough	Right	6.01	03/21/2017 03/21/2017	Richard Willoughby

LM Start	1.56	Rating **	U	Issue No.	25
LM End	1.56	Issue Type +	Ma	Location *	LS
Category	Earthen Levee			GPS Latitude/Longitude	
				Start	End
Item	Trim / Thin Trees			38.172869 °	38.172869 °
				-121.580681 °	-121.580681 °
DWR ID	DWR_NA0002_01_s_2012_25				
Comment Code					
T1 : Trim trees to at least five feet above ground level.					
Inspector Comment					
Tree blocking landward toe.					

LM Start	1.56	Rating **	U	Issue No.	25 (cont)
LM End	1.56	Issue Type +	Ma	Location *	LS

Photo 1 of 3 : SP_2017_NA0002_62_25_20170314_00020.jpg



Looking northwest at untrimmed tree at landward toe. (Spring 2015)

Photo 2 of 3 : SP_2017_NA0002_62_25_20170314_00021.jpg



Looking west at untrimmed tree at landward toe. (Spring 2015)

LM Start	1.56	Rating **	U	Issue No.	25 (cont)
LM End	1.56	Issue Type +	Ma	Location *	LS

Photo 3 of 3 : SP_2017_NA0002_62_25_20170314_00022.jpg



Looking southwest at an untrimmed tree on landward slope and toe. (Spring 2014)

* Location LS : Land Side N/A : Not Applicable WS : Water Side CR : Crown		** Rating A : Acceptable M : Minimally Acceptable U : Unacceptable		N : Not Inspected/Rated C : Corrected A/W : Acceptable but Monitor & Maintain		+ Issue Type Ma : Maintenance Deficiency Ob : Design & System Obsolescence En : Enforcement	
---	--	---	--	---	--	--	--

**Flood Control Project Maintenance
Levee Inspections**

Maintenance Issue Types Only, Levee Inspection Report By Mile - Spring 2017

Brannan Andrus Levee Maintenance District

Waterway	Bank	Unit Miles	Inspection Start/End	Inspector
Unit No. 01 Georgiana Slough	Right	6.01	03/21/2017 03/21/2017	Richard Willoughby

LM Start	1.79	Rating **	U	Issue No.	74
LM End	1.79	Issue Type +	Ma	Location *	LS
Category	Earthen Levee			GPS Latitude/Longitude	
				Start	End
Item	Slope Stability			38.169625 °	38.169625 °
				-121.581542 °	-121.581542 °
DWR ID	DWR_NA0002_01_f_2016_74				
Comment Code					
S3 : Repair the levee slope damaged by vehicle traffic and prevent access where possible.					
Inspector Comment					
Landowner is damaging landward slope by using it as a ramp to access his property.					

LM Start	1.79	Rating **	U	Issue No.	74 (cont)
LM End	1.79	Issue Type +	Ma	Location *	LS

Photo 1 of 3 : SP_2017_NA0002_62_74_20170314_00062.jpg



Looking west at slope damage on waterward slope.

Photo 2 of 3 : SP_2017_NA0002_62_74_20170314_00063.jpg



Looking south at slope damage on waterward slope.

LM Start	1.79	Rating **	U	Issue No.	74 (cont)
LM End	1.79	Issue Type +	Ma	Location *	LS

Photo 3 of 3 : SP_2017_NA0002_62_74_20170314_00064.jpg



Looking north at slope damage on waterward slope.

* Location LS : Land Side N/A : Not Applicable WS : Water Side CR : Crown		** Rating A : Acceptable N : Not Inspected/Rated M : Minimally Acceptable C : Corrected U : Unacceptable A/W : Acceptable but Monitor & Maintain		+ Issue Type Ma : Maintenance Deficiency Ob : Design & System Obsolescence En : Enforcement
--	--	---	--	---

**Flood Control Project Maintenance
Levee Inspections**

Maintenance Issue Types Only, Levee Inspection Report By Mile - Spring 2017

Brannan Andrus Levee Maintenance District

Waterway	Bank	Unit Miles	Inspection Start/End	Inspector
Unit No. 01 Georgiana Slough	Right	6.01	03/21/2017 03/21/2017	Richard Willoughby

LM Start	2.25	Rating **	M	Issue No.	6	
LM End	2.25	Issue Type +	Ma	Location *	LS	
Category	Earthen Levee			GPS Latitude/Longitude		
				Start		End
Item	Trim / Thin Trees			38.163460 °		38.163460 °
				-121.584406 °		-121.584406 °
DWR ID	DWR_NA0002_01_s _ 2012_6					
Comment Code						
T1 : Trim trees to at least five feet above ground level.						
Inspector Comment						

No Photos

LM Start	2.34	Rating **	M	Issue No.	72
LM End	2.34	Issue Type +	Ma	Location *	LS
Category	Earthen Levee			GPS Latitude/Longitude	
				Start	End
Item	Trim / Thin Trees			38.162242 °	38.162242 °
				-121.585058 °	-121.585058 °
DWR ID	DWR_NA0002_01_f _ 2016_72				
Comment Code					
T1 : Trim trees to at least five feet above ground level.					
Inspector Comment					

No Photos

LM Start	2.36	Rating **	M	Issue No.	7
LM End	2.36	Issue Type +	Ma	Location *	LS
Category	Earthen Levee			GPS Latitude/Longitude	
				Start	End
Item	Animal Control			38.162004 °	38.162004 °
				-121.585229 °	-121.585229 °
DWR ID	DWR_NA0002_01_s _ 2012_7				
Comment Code					
A3 : No rodents visible, but rodent burrows visible; need to backfill and compact or grout burrows.					
Inspector Comment					

No Photos

* Location LS : Land Side N/A : Not Applicable WS : Water Side CR : Crown		** Rating A : Acceptable N : Not Inspected/Rated M : Minimally Acceptable C : Corrected U : Unacceptable A/W : Acceptable but Monitor & Maintain		+ Issue Type Ma : Maintenance Deficiency Ob : Design & System Obsolescence En : Enforcement	
--	--	---	--	---	--

**Flood Control Project Maintenance
Levee Inspections**

Maintenance Issue Types Only, Levee Inspection Report By Mile - Spring 2017

Brannan Andrus Levee Maintenance District

Waterway	Bank	Unit Miles	Inspection Start/End	Inspector
Unit No. 01 Georgiana Slough	Right	6.01	03/21/2017 03/21/2017	Richard Willoughby

LM Start	2.40	Rating **	C	Issue No.	8
LM End	2.40	Issue Type +	Ma	Location *	LS
Category	Earthen Levee			GPS Latitude/Longitude	
				Start	End
Item	Encroachments			38.161573 °	38.161573 °
				-121.585720 °	-121.585720 °
DWR ID	DWR_NA0002_01_s _ 2013_8				
Comment Code					
GA : Garbage					
Inspector Comment					

No Photos

LM Start	2.45	Rating **	U	Issue No.	28
LM End	2.49	Issue Type +	Ma	Location *	LS
Category	Earthen Levee			GPS Latitude/Longitude	
				Start	End
Item	Vegetation			38.160805 °	38.160281 °
				-121.585782 °	-121.586007 °
DWR ID	DWR_NA0002_01_s _ 2013_28				
Comment Code					
V2 : Remove the wild growth other than native grasses from the levee slopes.					
Inspector Comment					
Dense vegetation and wild roses on landside slope and toe.					

Photo 1 of 2 : SP_2017_NA0002_62_28_20170314_00025.jpg



Look west at dense vegetation at landward toe. (Spring 2016)

LM Start	2.45	Rating **	U	Issue No.	28 (cont)
LM End	2.49	Issue Type +	Ma	Location *	LS

Photo 2 of 2 : SP_2017_NA0002_62_28_20170314_00026.jpg



Look west at dense vegetation at landward toe. (Fall 2016)

* Location LS : Land Side N/A : Not Applicable WS : Water Side CR : Crown		** Rating A : Acceptable M : Minimally Acceptable U : Unacceptable		N : Not Inspected/Rated C : Corrected A/W : Acceptable but Monitor & Maintain		+ Issue Type Ma : Maintenance Deficiency Ob : Design & System Obsolescence En : Enforcement	
--	--	--	--	---	--	---	--

**Flood Control Project Maintenance
Levee Inspections**

Maintenance Issue Types Only, Levee Inspection Report By Mile - Spring 2017

Brannan Andrus Levee Maintenance District

Waterway	Bank	Unit Miles	Inspection Start/End	Inspector
Unit No. 01 Georgiana Slough	Right	6.01	03/21/2017 03/21/2017	Richard Willoughby

LM Start	2.76	Rating **	U	Issue No.	71
LM End	2.76	Issue Type +	Ma	Location *	LS
Category	Earthen Levee			GPS Latitude/Longitude	
				Start	End
Item	Vegetation			38.157860 °	38.157860 °
				-121.588920 °	-121.588920 °
DWR ID	DWR_NA0002_01_f_2016_71				
Comment Code					
V2 : Remove the wild growth other than native grasses from the levee slopes.					
Inspector Comment					
Dense wildroses on landward slope.					

Photo 1 of 1 : SP_2017_NA0002_62_71_20170314_00057.jpg



Looking west at dense vines at landward toe.

LM Start	2.94	Rating **	C	Issue No.	70
LM End	2.94	Issue Type +	Ma	Location *	CR
Category	Earthen Levee			GPS Latitude/Longitude	
				Start	End
Item	Animal Control			38.157320 °	38.157320 °
				-121.591990 °	-121.591990 °
DWR ID	DWR_NA0002_01_f_2016_70				
Comment Code					
A3 : No rodents visible, but rodent burrows visible; need to backfill and compact or grout burrows.					
Inspector Comment					
Rodent hole 4" diameter on levee crown roadway.					

No Photos

* Location LS : Land Side N/A : Not Applicable WS : Water Side CR : Crown		** Rating A : Acceptable N : Not Inspected/Rated M : Minimally Acceptable C : Corrected U : Unacceptable A/W : Acceptable but Monitor & Maintain		+ Issue Type Ma : Maintenance Deficiency Ob : Design & System Obsolescence En : Enforcement
--	--	---	--	---

**Flood Control Project Maintenance
Levee Inspections**

Maintenance Issue Types Only, Levee Inspection Report By Mile - Spring 2017

Brannan Andrus Levee Maintenance District

Waterway	Bank	Unit Miles	Inspection Start/End	Inspector
Unit No. 01 Georgiana Slough	Right	6.01	03/21/2017 03/21/2017	Richard Willoughby

LM Start	3.00	Rating **	U	Issue No.	55
LM End	3.00	Issue Type +	Ma	Location *	LS
Category	Earthen Levee			GPS Latitude/Longitude	
				Start	End
Item	Vegetation			38.156493 °	38.156493 °
				-121.592481 °	-121.592481 °
DWR ID	DWR_NA0002_01_s_2014_55				
Comment Code					
V2 : Remove the wild growth other than native grasses from the levee slopes.					
Inspector Comment					
Dense vegetation on landward toe.					

LM Start	3.00	Rating **	U	Issue No.	55 (cont)
LM End	3.00	Issue Type +	Ma	Location *	LS

Photo 1 of 4 : SP_2017_NA0002_62_55_20170314_00041.jpg



Looking northwest at dense vegetation at landward toe. (Spring 2016)

Photo 2 of 4 : SP_2017_NA0002_62_55_20170314_00042.jpg



Looking southwest at dense vegetation at landward toe. (Spring 2015)

Photo 3 of 4 : SP_2017_NA0002_62_55_20170314_00043.jpg



Looking north at dense vegetation withing fifteen feet of landward toe.

LM Start	3.00	Rating **	U	Issue No.	55 (cont)
LM End	3.00	Issue Type +	Ma	Location *	LS

* Location LS : Land Side N/A : Not Applicable WS : Water Side CR : Crown		** Rating A : Acceptable N : Not Inspected/Rated M : Minimally Acceptable C : Corrected U : Unacceptable A/W : Acceptable but Monitor & Maintain		+ Issue Type Ma : Maintenance Deficiency Ob : Design & System Obsolescence En : Enforcement	
--	--	---	--	---	--

**Flood Control Project Maintenance
Levee Inspections**

Maintenance Issue Types Only, Levee Inspection Report By Mile - Spring 2017

Brannan Andrus Levee Maintenance District

Waterway	Bank	Unit Miles	Inspection Start/End	Inspector
Unit No. 01 Georgiana Slough	Right	6.01	03/21/2017 03/21/2017	Richard Willoughby

LM Start	3.00	Rating **	U	Issue No.	55 (cont)	
LM End	3.00	Issue Type +	Ma	Location *	LS	
Category	Earthen Levee			GPS Latitude/Longitude		
				Start	End	
Item	Vegetation			38.156493 °	38.156493 °	
				-121.592481 °	-121.592481 °	
DWR ID	DWR_NA0002_01_s _ 2014_55					
Comment Code						
V2 : Remove the wild growth other than native grasses from the levee slopes.						
Inspector Comment						
Dense vegetation on landward toe.						

Photo 4 of 4 : SP_2017_NA0002_62_55_20170314_00044.jpg



Looking north at dense vegetation within fifteen feet of landward toe.

LM Start	3.38	Rating **	U	Issue No.	67
LM End	3.40	Issue Type +	Ma	Location *	CR
Category	Earthen Levee			GPS Latitude/Longitude	
				Start	End
Item	Slope Stability			38.151430 °	38.151390 °
				-121.592085 °	-121.592517 °
DWR ID	DWR_NA0002_01_s _ 2017_67				
Comment Code					
S1 : Repair slope instability.					
Inspector Comment					
Appears to be a slip from waterside to landside.					

Photo 1 of 3 : SP_2017_NA0002_62_67_20170324_00111.jpg



Looking south at sloughing on landward shoulder.

LM Start	3.38	Rating **	U	Issue No.	67 (cont)
LM End	3.40	Issue Type +	Ma	Location *	CR

Photo 2 of 3 : SP_2017_NA0002_62_67_20170324_00110.jpg



Looking east at possible sloughing on landward shoulder.

* Location LS : Land Side N/A : Not Applicable WS : Water Side CR : Crown		** Rating A : Acceptable M : Minimally Acceptable U : Unacceptable		N : Not Inspected/Rated C : Corrected A/W : Acceptable but Monitor & Maintain		+ Issue Type Ma : Maintenance Deficiency Ob : Design & System Obsolescence En : Enforcement	
--	--	--	--	---	--	---	--

**Flood Control Project Maintenance
Levee Inspections**

Maintenance Issue Types Only, Levee Inspection Report By Mile - Spring 2017

Brannan Andrus Levee Maintenance District

Waterway	Bank	Unit Miles	Inspection Start/End	Inspector
Unit No. 01 Georgiana Slough	Right	6.01	03/21/2017 03/21/2017	Richard Willoughby

LM Start	3.38	Rating **	U	Issue No.	67 (cont)	
LM End	3.40	Issue Type +	Ma	Location *	CR	
Category	Earthen Levee			GPS Latitude/Longitude		
				Start		End
Item	Slope Stability			38.151430 °		38.151390 °
				-121.592085 °		-121.592517 °
DWR ID	DWR_NA0002_01_s _ 2017_67					
Comment Code						
S1 : Repair slope instability.						
Inspector Comment						
Appears to be a slip from waterside to landside.						

Photo 3 of 3 : SP_2017_NA0002_62_67_20170324_00112.jpg



Looking at downstream corner of slough.

LM Start	3.46	Rating **	C	Issue No.	30
LM End	3.82	Issue Type +	Ma	Location *	WS
Category	Earthen Levee			GPS Latitude/Longitude	
				Start	End
Item	Vegetation			38.151572 °	38.149813 °
				-121.593488 °	-121.598913 °
DWR ID	DWR_NA0002_01_s _ 2013_30				
Comment Code					
V2 : Remove the wild growth other than native grasses from the levee slopes.					
Inspector Comment					
Willows on waterside slope.					

No Photos

LM Start	3.62	Rating **	A/W	Issue No.	9
LM End	3.62	Issue Type +	Ma	Location *	LS
Category	Earthen Levee			GPS Latitude/Longitude	
				Start	End
Item	Trim / Thin Trees			38.151744 °	38.151744 °
				-121.596425 °	-121.596425 °
DWR ID	DWR_NA0002_01_s _ 2012_9				
Comment Code					
T1 : Trim trees to at least five feet above ground level.					
Inspector Comment					

No Photos

* Location LS : Land Side N/A : Not Applicable WS : Water Side CR : Crown		** Rating A : Acceptable N : Not Inspected/Rated M : Minimally Acceptable C : Corrected U : Unacceptable A/W : Acceptable but Monitor & Maintain		+ Issue Type Ma : Maintenance Deficiency Ob : Design & System Obsolescence En : Enforcement
--	--	---	--	---

**Flood Control Project Maintenance
Levee Inspections**

Maintenance Issue Types Only, Levee Inspection Report By Mile - Spring 2017

Brannan Andrus Levee Maintenance District

Waterway	Bank	Unit Miles	Inspection Start/End	Inspector
Unit No. 01 Georgiana Slough	Right	6.01	03/21/2017 03/21/2017	Richard Willoughby

LM Start	3.87	Rating **	U	Issue No.	57
LM End	3.87	Issue Type +	Ma	Location *	WS
Category	Earthen Levee			GPS Latitude/Longitude	
				Start	End
Item	Trim / Thin Trees			38.149217 °	38.149217 °
				-121.599389 °	-121.599389 °
DWR ID	DWR_NA0002_01_f_2015_57				
Comment Code					
T1 : Trim trees to at least five feet above ground level.					
Inspector Comment					

Photo 1 of 1 : SP_2017_NA0002_62_57_20170314_00045.jpg



Looking west at untrimmed tree on waterward slope.

LM Start	3.99	Rating **	A/W	Issue No.	85
LM End	3.99	Issue Type +	Ma	Location *	WS
Category	Supplemental			GPS Latitude/Longitude	
				Start	End
Item	DWR UCIP LMA Responsibility			38.147677 °	38.147677 °
				-121.600501 °	-121.600501 °
DWR ID					
Comment Code					
Inspector Comment					
FS_ID:51302 DS_ID:21772 EP_NO: 11248 Repair Type: No Action Needed Crossing Status: Found UCIP Comments: FIELD_STRUCT_DESC: 1 of 2: 24-inch steel drainage pipe (26-inch pipe referenced in O&M manual) through levee, 3 feet below the crown. Siphon breaker is located on the waterside (WS) slope. Pump is located on the landside (LS). (Automatic Board Order (ABO) issued as Permit No. 11248, 1975 – Reclamation District No. 407) [Additional Reference(s): DWR Levee Log, 2005. USACE Sacramento O&M Manual Unit 103, June 1954, Drawing No. 50-4-2631, page 2631/2, (Station 107+76)]. FS Date: 5/16/2013					

Photo 1 of 3 : UCIP_SP_2017_51302_22082.jpg



24-inch pipe and siphon breaker visible on WS slope.

* Location	** Rating	+ Issue Type
LS : Land Side WS : Water Side CR : Crown	A : Acceptable M : Minimally Acceptable U : Unacceptable	Ma : Maintenance Deficiency Ob : Design & System Obsolescence En : Enforcement
N/A : Not Applicable	N : Not Inspected/Rated C : Corrected A/W : Acceptable but Monitor & Maintain	

**Flood Control Project Maintenance
Levee Inspections**

Maintenance Issue Types Only, Levee Inspection Report By Mile - Spring 2017

Brannan Andrus Levee Maintenance District

Waterway	Bank	Unit Miles	Inspection Start/End	Inspector
Unit No. 01 Georgiana Slough	Right	6.01	03/21/2017 03/21/2017	Richard Willoughby

LM Start	3.99	Rating **	A/W	Issue No.	85 (cont)
LM End	3.99	Issue Type +	Ma	Location *	WS
Category	Supplemental			GPS Latitude/Longitude	
				Start	End
Item	DWR UCIP LMA Responsibility			38.147677 °	38.147677 °
				-121.600501 °	-121.600501 °
DWR ID					

Comment Code

Inspector Comment

FS_ID:51302
DS_ID:21772
EP_NO: 11248
Repair Type: No Action Needed
Crossing Status: Found
UCIP Comments:
FIELD_STRUCT_DESC: 1 of 2: 24-inch steel drainage pipe (26-inch pipe referenced in O&M manual) through levee, 3 feet below the crown. Siphon breaker is located on the waterside (WS) slope. Pump is located on the landside (LS). (Automatic Board Order (ABO) issued as Permit No. 11248, 1975 – Reclamation District No. 407) [Additional Reference(s): DWR Levee Log, 2005. USACE Sacramento O&M Manual Unit 103, June 1954, Drawing No. 50-4-2631, page 2631/2, (Station 107+76)].
FS Date: 5/16/2013

LM Start	3.99	Rating **	A/W	Issue No.	85 (cont)
LM End	3.99	Issue Type +	Ma	Location *	WS

Photo 2 of 3 : UCIP_SP_2017_51302_22081.jpg



Pipe visible on LS slope.

Photo 3 of 3 : UCIP_SP_2017_51302_22080.jpg



Pumping plant on LS toe.

* Location LS : Land Side N/A : Not Applicable WS : Water Side CR : Crown		** Rating A : Acceptable M : Minimally Acceptable U : Unacceptable N : Not Inspected/Rated C : Corrected A/W : Acceptable but Monitor & Maintain		+ Issue Type Ma : Maintenance Deficiency Ob : Design & System Obsolescence En : Enforcement
--	--	---	--	---

**Flood Control Project Maintenance
Levee Inspections**

Maintenance Issue Types Only, Levee Inspection Report By Mile - Spring 2017

Brannan Andrus Levee Maintenance District

Waterway	Bank	Unit Miles	Inspection Start/End	Inspector
Unit No. 01 Georgiana Slough	Right	6.01	03/21/2017 03/21/2017	Richard Willoughby

LM Start	4.18	Rating **	M	Issue No.	12
LM End	4.20	Issue Type +	Ma	Location *	LS
Category	Earthen Levee			GPS Latitude/Longitude	
				Start	End
Item	Trim / Thin Trees			38.145094 °	38.144817 °
				-121.601585 °	-121.601477 °
DWR ID	DWR_NA0002_01_s _ 2012_12				
Comment Code					
T1 : Trim trees to at least five feet above ground level.					
Inspector Comment					

No Photos

LM Start	4.25	Rating **	C	Issue No.	13
LM End	4.28	Issue Type +	Ma	Location *	WS
Category	Earthen Levee			GPS Latitude/Longitude	
				Start	End
Item	Trim / Thin Trees			38.144134°	38.143747°
				-121.601177°	-121.600924°
DWR ID	DWR_NA0002_01_s _ 2012_13				
Comment Code					
T1 : Trim trees to at least five feet above ground level.					
Inspector Comment					

No Photos

LM Start	4.36	Rating **	M	Issue No.	21
LM End	4.36	Issue Type +	Ma	Location *	WS
Category	Earthen Levee			GPS Latitude/Longitude	
				Start	End
Item	Trim / Thin Trees			38.142838 °	38.142838 °
				-121.600163 °	-121.600163 °
DWR ID	DWR_NA0002_01_s _ 2012_21				
Comment Code					
T1 : Trim trees to at least five feet above ground level.					
Inspector Comment					

No Photos

* Location LS : Land Side N/A : Not Applicable WS : Water Side CR : Crown		** Rating A : Acceptable N : Not Inspected/Rated M : Minimally Acceptable C : Corrected U : Unacceptable A/W : Acceptable but Monitor & Maintain		+ Issue Type Ma : Maintenance Deficiency Ob : Design & System Obsolescence En : Enforcement	
--	--	---	--	---	--

**Flood Control Project Maintenance
Levee Inspections**

Maintenance Issue Types Only, Levee Inspection Report By Mile - Spring 2017

Brannan Andrus Levee Maintenance District

Waterway	Bank	Unit Miles	Inspection Start/End	Inspector
Unit No. 01 Georgiana Slough	Right	6.01	03/21/2017 03/21/2017	Richard Willoughby

LM Start	4.64	Rating **	C	Issue No.	49
LM End	4.64	Issue Type +	Ma	Location *	WS
Category	Earthen Levee			GPS Latitude/Longitude	
				Start	End
Item	Trim / Thin Trees			38.139211 °	38.139211 °
				-121.597582 °	-121.597582 °
DWR ID	DWR_NA0002_01_f _ 2015_49				
Comment Code					
T4 : Trim trees over roadway to at least 12 feet above ground level.					
Inspector Comment					

No Photos

LM Start	4.98	Rating **	M	Issue No.	14
LM End	4.98	Issue Type +	Ma	Location *	WS
Category	Earthen Levee			GPS Latitude/Longitude	
				Start	End
Item	Trim / Thin Trees			38.135158 °	38.135158 °
				-121.594198 °	-121.594198 °
DWR ID	DWR_NA0002_01_s _ 2012_14				
Comment Code					
T4 : Trim trees over roadway to at least 12 feet above ground level.					
Inspector Comment					

No Photos

* Location LS : Land Side N/A : Not Applicable WS : Water Side CR : Crown	** Rating A : Acceptable M : Minimally Acceptable U : Unacceptable N : Not Inspected/Rated C : Corrected A/W : Acceptable but Monitor & Maintain	+ Issue Type Ma : Maintenance Deficiency Ob : Design & System Obsolescence En : Enforcement
--	---	---

**Flood Control Project Maintenance
Levee Inspections**

Maintenance Issue Types Only, Levee Inspection Report By Mile - Spring 2017

Brannan Andrus Levee Maintenance District

Waterway	Bank	Unit Miles	Inspection Start/End	Inspector
Unit No. 01 Georgiana Slough	Right	6.01	03/21/2017 03/21/2017	Richard Willoughby

LM Start	5.05	Rating **	A/W	Issue No.	63
LM End	5.05	Issue Type +	Ma	Location *	WS
Category	Earthen Levee			GPS Latitude/Longitude	
				Start	End
Item	Trim / Thin Trees			38.134467 °	38.134467 °
				-121.593428 °	-121.593428 °
DWR ID	DWR_NA0002_01_s_2017_63				
Comment Code					
T2 : Thin trees to allow visibility of the ground and room to flood fight.					
Inspector Comment					

No Photos

LM Start	5.06	Rating **	U	Issue No.	62
LM End	5.06	Issue Type +	Ma	Location *	WS
Category	Earthen Levee			GPS Latitude/Longitude	
				Start	End
Item	Encroachments			38.134275 °	38.134275 °
				-121.593213 °	-121.593213 °
DWR ID	DWR_NA0002_01_f_2016_62				
Comment Code					
TR : Tree or limb					
Inspector Comment					
Dead Pine tree on waterward berm.					

Photo 1 of 2 : SP_2017_NA0002_62_62_20170314_00049.jpg



Looking upstream at dead pine tree on waterward berm.

LM Start	5.06	Rating **	U	Issue No.	62 (cont)
LM End	5.06	Issue Type +	Ma	Location *	WS

Photo 2 of 2 : SP_2017_NA0002_62_62_20170314_00050.jpg



Looking downstream at dead pine tree on waterward berm.

* Location LS : Land Side N/A : Not Applicable WS : Water Side CR : Crown		** Rating A : Acceptable M : Minimally Acceptable U : Unacceptable		N : Not Inspected/Rated C : Corrected A/W : Acceptable but Monitor & Maintain		+ Issue Type Ma : Maintenance Deficiency Ob : Design & System Obsolescence En : Enforcement	
--	--	--	--	---	--	---	--

**Flood Control Project Maintenance
Levee Inspections**

Maintenance Issue Types Only, Levee Inspection Report By Mile - Spring 2017

Brannan Andrus Levee Maintenance District

Waterway	Bank	Unit Miles	Inspection Start/End	Inspector
Unit No. 01 Georgiana Slough	Right	6.01	03/21/2017 03/21/2017	Richard Willoughby

LM Start	5.11	Rating **	C	Issue No.	15
LM End	5.11	Issue Type +	Ma	Location *	WS
Category	Earthen Levee			GPS Latitude/Longitude	
				Start	End
Item	Trim / Thin Trees			38.133759 °	38.133759 °
				-121.592598 °	-121.592598 °
DWR ID	DWR_NA0002_01_s _ 2012_15				
Comment Code					
T4 : Trim trees over roadway to at least 12 feet above ground level.					
Inspector Comment					

No Photos

LM Start	5.12	Rating **	M	Issue No.	65
LM End	5.12	Issue Type +	Ma	Location *	LS
Category	Earthen Levee			GPS Latitude/Longitude	
				Start	End
Item	Vegetation			38.133695 °	38.133695 °
				-121.592516 °	-121.592516 °
DWR ID	DWR_NA0002_01_s _ 2016_65				
Comment Code					
V2 : Remove the wild growth other than native grasses from the levee slopes.					
Inspector Comment					
Remove cactus from landward slope.					

Photo 1 of 1 : SP_2017_NA0002_62_65_20170314_00051.jpg



Looking at cactus on landward slope.

LM Start	5.17	Rating **	M	Issue No.	31
LM End	5.17	Issue Type +	Ma	Location *	WS
Category	Earthen Levee			GPS Latitude/Longitude	
				Start	End
Item	Trim / Thin Trees			38.133145 °	38.133145 °
				-121.591895 °	-121.591895 °
DWR ID	DWR_NA0002_01_s _ 2013_31				
Comment Code					
T4 : Trim trees over roadway to at least 12 feet above ground level.					
Inspector Comment					

Photo 1 of 1 : SP_2017_NA0002_62_31_20170314_00027.jpg



Looking southeast at tree over levee crown.

* Location
LS : Land Side N/A : Not Applicable
WS : Water Side
CR : Crown

** Rating
A : Acceptable N : Not Inspected/Rated
M : Minimally Acceptable C : Corrected
U : Unacceptable A/W : Acceptable but Monitor & Maintain

+ Issue Type
Ma : Maintenance Deficiency
Ob : Design & System Obsolescence
En : Enforcement

**Flood Control Project Maintenance
Levee Inspections**

Maintenance Issue Types Only, Levee Inspection Report By Mile - Spring 2017

Brannan Andrus Levee Maintenance District

Waterway	Bank	Unit Miles	Inspection Start/End	Inspector
Unit No. 01 Georgiana Slough	Right	6.01	03/21/2017 03/21/2017	Richard Willoughby

LM Start	5.29	Rating **	C	Issue No.	47
LM End	5.29	Issue Type +	Ma	Location *	WS
Category	Earthen Levee			GPS Latitude/Longitude	
				Start	End
Item	Encroachments			38.131802 °	38.131802 °
				-121.590465 °	-121.590465 °
DWR ID	DWR_NA0002_01_f_2015_47				
Comment Code					
PR : Prunings					
Inspector Comment					
Prunings piles on waterward berm should be removed or burned.					

No Photos

LM Start	5.33	Rating **	M	Issue No.	2
LM End	5.33	Issue Type +	Ma	Location *	WS
Category	Earthen Levee			GPS Latitude/Longitude	
				Start	End
Item	Trim / Thin Trees			38.131327 °	38.131327 °
				-121.589980 °	-121.589980 °
DWR ID	DWR_NA0002_01_s_2012_2				
Comment Code					
T1 : Trim trees to at least five feet above ground level.					
Inspector Comment					

Photo 1 of 1 : SP_2017_NA0002_62_2_20170314_00001.jpg



Looking at untrimmed trees on waterward slope.

* Location LS : Land Side N/A : Not Applicable WS : Water Side CR : Crown	** Rating A : Acceptable M : Minimally Acceptable U : Unacceptable N : Not Inspected/Rated C : Corrected A/W : Acceptable but Monitor & Maintain	+ Issue Type Ma : Maintenance Deficiency Ob : Design & System Obsolescence En : Enforcement
--	---	---

**Flood Control Project Maintenance
Levee Inspections**

Maintenance Issue Types Only, Levee Inspection Report By Mile - Spring 2017

Brannan Andrus Levee Maintenance District

Waterway	Bank	Unit Miles	Inspection Start/End	Inspector
Unit No. 01 Georgiana Slough	Right	6.01	03/21/2017 03/21/2017	Richard Willoughby

LM Start	5.42	Rating **	M	Issue No.	54
LM End	5.42	Issue Type +	Ma	Location *	LS
Category	Earthen Levee			GPS Latitude/Longitude	
				Start	End
Item	Trim / Thin Trees			38.130335 °	38.130335 °
				-121.588920 °	-121.588920 °
DWR ID	DWR_NA0002_01_s _ 2014_54				
Comment Code					
T1 : Trim trees to at least five feet above ground level.					
Inspector Comment					

Photo 1 of 1 : SP_2017_NA0002_62_54_20170314_00040.jpg



Looking at dense trees at landward toe.

LM Start	5.43	Rating **	U	Issue No.	23
LM End	5.54	Issue Type +	Ma	Location *	LS
Category	Earthen Levee			GPS Latitude/Longitude	
				Start	End
Item	Vegetation			38.130253 °	38.129451 °
				-121.588822 °	-121.587062 °
DWR ID	DWR_NA0002_01_s _ 2012_23				
Comment Code					
V2 : Remove the wild growth other than native grasses from the levee slopes.					
Inspector Comment					
Control vegetation at landside toe.					

Photo 1 of 6 : SP_2017_NA0002_62_23_20170314_00013.jpg



Looking south at vegetation at landward toe. (Spring 2016)

LM Start	5.43	Rating **	U	Issue No.	23 (cont)
LM End	5.54	Issue Type +	Ma	Location *	LS

Photo 2 of 6 : SP_2017_NA0002_62_23_20170314_00014.jpg



Looking west at dense vegetation at landward toe.

*** Location**
LS : Land Side N/A : Not Applicable
WS : Water Side
CR : Crown

**** Rating**
A : Acceptable
M : Minimally Acceptable
U : Unacceptable
N : Not Inspected/Rated
C : Corrected
A/W : Acceptable but Monitor & Maintain

+ Issue Type
Ma : Maintenance Deficiency
Ob : Design & System Obsolescence
En : Enforcement

**Flood Control Project Maintenance
Levee Inspections**

Maintenance Issue Types Only, Levee Inspection Report By Mile - Spring 2017

Brannan Andrus Levee Maintenance District

Waterway	Bank	Unit Miles	Inspection Start/End	Inspector
Unit No. 01 Georgiana Slough	Right	6.01	03/21/2017 03/21/2017	Richard Willoughby

LM Start	5.43	Rating **	U	Issue No.	23 (cont)	
LM End	5.54	Issue Type +	Ma	Location *	LS	
Category	Earthen Levee			GPS Latitude/Longitude		
				Start		End
Item	Vegetation			38.130253 °		38.129451 °
				-121.588822 °		-121.587062 °
DWR ID	DWR_NA0002_01_s_2012_23					
Comment Code						
V2 : Remove the wild growth other than native grasses from the levee slopes.						
Inspector Comment						
Control vegetation at landside toe.						

LM Start	5.43	Rating **	U	Issue No.	23 (cont)
LM End	5.54	Issue Type +	Ma	Location *	LS

Photo 3 of 6 : SP_2017_NA0002_62_23_20170314_00015.jpg



Looking east at dense vegetation at landward toe.

Photo 4 of 6 : SP_2017_NA0002_62_23_20170314_00016.jpg



Looking east at dense vegetation on landward toe.

LM Start	5.43	Rating **	U	Issue No.	23 (cont)
LM End	5.54	Issue Type +	Ma	Location *	LS

Photo 5 of 6 : SP_2017_NA0002_62_23_20170314_00017.jpg



Looking south at dense berry vines and trees on the landward slope and toe.

* Location LS : Land Side N/A : Not Applicable WS : Water Side CR : Crown		** Rating A : Acceptable M : Minimally Acceptable U : Unacceptable		N : Not Inspected/Rated C : Corrected A/W : Acceptable but Monitor & Maintain		+ Issue Type Ma : Maintenance Deficiency Ob : Design & System Obsolescence En : Enforcement	
---	--	---	--	---	--	--	--

**Flood Control Project Maintenance
Levee Inspections**

Maintenance Issue Types Only, Levee Inspection Report By Mile - Spring 2017

Brannan Andrus Levee Maintenance District

Waterway	Bank	Unit Miles	Inspection Start/End	Inspector
Unit No. 01 Georgiana Slough	Right	6.01	03/21/2017 03/21/2017	Richard Willoughby

LM Start	5.43	Rating **	U	Issue No.	23 (cont)	
LM End	5.54	Issue Type +	Ma	Location *	LS	
Category	Earthen Levee			GPS Latitude/Longitude		
				Start		End
Item	Vegetation			38.130253 °		38.129451 °
				-121.588822 °		-121.587062 °
DWR ID	DWR_NA0002_01_s _ 2012_23					
Comment Code						
V2 : Remove the wild growth other than native grasses from the levee slopes.						
Inspector Comment						
Control vegetation at landside toe.						

Photo 6 of 6 : SP_2017_NA0002_62_23_20170314_00018.jpg



Looking south at trees, berry vines, and wild rose on landside toe.

LM Start	5.46	Rating **	M	Issue No.	10
LM End	5.46	Issue Type +	Ma	Location *	LS
Category	Earthen Levee			GPS Latitude/Longitude	
				Start	End
Item	Crown Surface / Depressions / Rutting			38.129935 °	38.129935 °
				-121.588383 °	-121.588383 °
DWR ID	DWR_NA0002_01_s _ 2017_10				
Comment Code					
C2 : Repair depressions or ruts in the crown or slope.					
Inspector Comment					
Small pot hole on levee crown.					

No Photos

LM Start	5.78	Rating **	M	Issue No.	17
LM End	5.81	Issue Type +	Ma	Location *	LS
Category	Earthen Levee			GPS Latitude/Longitude	
				Start	End
Item	Trim / Thin Trees			38.129537 °	38.129599 °
				-121.582760 °	-121.582155 °
DWR ID	DWR_NA0002_01_s _ 2012_17				
Comment Code					
T1 : Trim trees to at least five feet above ground level.					
Inspector Comment					
Trim trees for visibility.					

Photo 1 of 1 : SP_2017_NA0002_62_17_20170314_00011.jpg



Looking at dense trees on landward slope and toe.

*** Location**

LS : Land Side N/A : Not Applicable
WS : Water Side
CR : Crown

**** Rating**

A : Acceptable N : Not Inspected/Rated
M : Minimally Acceptable C : Corrected
U : Unacceptable A/W : Acceptable but Monitor & Maintain

+ Issue Type

Ma : Maintenance Deficiency
Ob : Design & System Obsolescence
En : Enforcement

**Flood Control Project Maintenance
Levee Inspections**

Maintenance Issue Types Only, Levee Inspection Report By Mile - Spring 2017

Brannan Andrus Levee Maintenance District

Waterway	Bank	Unit Miles	Inspection Start/End	Inspector
Unit No. 01 Georgiana Slough	Right	6.01	03/21/2017 03/21/2017	Richard Willoughby

LM Start	5.88	Rating **	C	Issue No.	51
LM End	5.88	Issue Type +	Ma	Location *	LS
Category	Earthen Levee			GPS Latitude/Longitude	
				Start	End
Item	Trim / Thin Trees			38.129722 °	38.129722 °
				-121.580823 °	-121.580823 °
DWR ID	DWR_NA0002_01_f_2014_51				
Comment Code					
T4 : Trim trees over roadway to at least 12 feet above ground level.					
Inspector Comment					
Tree should be trimmed back from hanging over levee crown.					

No Photos

* Location LS : Land Side N/A : Not Applicable WS : Water Side CR : Crown	** Rating A : Acceptable M : Minimally Acceptable U : Unacceptable N : Not Inspected/Rated C : Corrected A/W : Acceptable but Monitor & Maintain	+ Issue Type Ma : Maintenance Deficiency Ob : Design & System Obsolescence En : Enforcement
--	---	---

**Flood Control Project Maintenance
Levee Inspections**

Maintenance Issue Types Only, Levee Inspection Report By Mile - Spring 2017

Brannan Andrus Levee Maintenance District

Waterway	Bank	Unit Miles	Inspection Start/End	Inspector
Unit No. 02 Sacramento River	Left	11.54	03/20/2017 03/20/2017	Richard Willoughby

LM Start	0.00	Rating **	M	Issue No.	83
LM End	11.13	Issue Type +	Ma	Location *	WS
Category	Earthen Levee		GPS Latitude/Longitude		
			Start	End	
Item	Vegetation		38.191882 °	38.112067 °	
			-121.567663 °	-121.698100 °	
DWR ID	DWR_NA0002_02_s _ 2017_83				
Comment Code					
V1 : Control annual grass and weeds on the levee slopes and easements.					
Inspector Comment					

No Photos

LM Start	0.00	Rating **	M	Issue No.	84
LM End	11.13	Issue Type +	Ma	Location *	LS
Category	Earthen Levee		GPS Latitude/Longitude		
			Start	End	
Item	Vegetation		38.191878 °	38.112067 °	
			-121.567670 °	-121.698100 °	
DWR ID	DWR_NA0002_02_s _ 2017_84				
Comment Code					
V1 : Control annual grass and weeds on the levee slopes and easements.					
Inspector Comment					

No Photos

* Location LS : Land Side N/A : Not Applicable WS : Water Side CR : Crown	** Rating A : Acceptable M : Minimally Acceptable U : Unacceptable	N : Not Inspected/Rated C : Corrected A/W : Acceptable but Monitor & Maintain	+ Issue Type Ma : Maintenance Deficiency Ob : Design & System Obsolescence En : Enforcement
--	--	---	---

**Flood Control Project Maintenance
Levee Inspections**

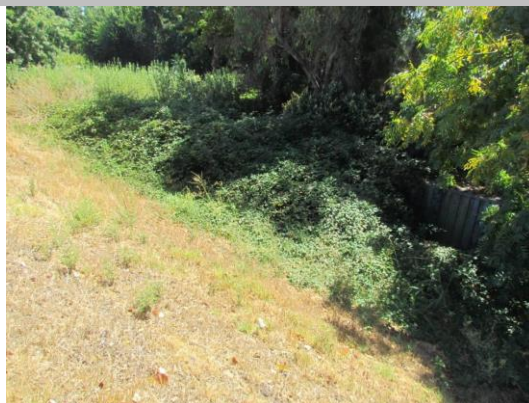
Maintenance Issue Types Only, Levee Inspection Report By Mile - Spring 2017

Brannan Andrus Levee Maintenance District

Waterway	Bank	Unit Miles	Inspection Start/End	Inspector
Unit No. 02 Sacramento River	Left	11.54	03/20/2017 03/20/2017	Richard Willoughby

LM Start	0.49	Rating **	U	Issue No.	40
LM End	0.49	Issue Type +	Ma	Location *	LS
Category	Earthen Levee			GPS Latitude/Longitude	
				Start	End
Item	Vegetation			38.188871 °	38.188871 °
				-121.575775 °	-121.575775 °
DWR ID	DWR_NA0002_02_f_2013_40				
Comment Code					
V2 : Remove the wild growth other than native grasses from the levee slopes.					
Inspector Comment					
Dense Berryvines at landward toe.					

Photo 1 of 1 : SP_2017_NA0002_63_40_20170314_00043.jpg



Looking east at berryvines at landward toe.

LM Start	0.55	Rating **	M	Issue No.	90
LM End	0.55	Issue Type +	Ma	Location *	LS
Category	Earthen Levee			GPS Latitude/Longitude	
				Start	End
Item	Trim / Thin Trees			38.188484 °	38.188484 °
				-121.576916 °	-121.576916 °
DWR ID	DWR_NA0002_02_f_2016_90				
Comment Code					
T1 : Trim trees to at least five feet above ground level.					
Inspector Comment					

No Photos

LM Start	0.72	Rating **	U	Issue No.	97
LM End	0.72	Issue Type +	Ma	Location *	LS
Category	Earthen Levee			GPS Latitude/Longitude	
				Start	End
Item	Trim / Thin Trees			38.187102 °	38.187102 °
				-121.579463 °	-121.579463 °
DWR ID	DWR_NA0002_02_f_2016_97				
Comment Code					
T1 : Trim trees to at least five feet above ground level.					
Inspector Comment					
Untrimmed fig tree on landward toe.					

Photo 1 of 2 : SP_2017_NA0002_63_97_20170314_00063.jpg



* Location		** Rating		+ Issue Type	
LS : Land Side	N/A : Not Applicable	A : Acceptable	N : Not Inspected/Rated	Ma : Maintenance Deficiency	
WS : Water Side		M : Minimally Acceptable	C : Corrected	Ob : Design & System Obsolescence	
CR : Crown		U : Unacceptable	A/W : Acceptable but Monitor & Maintain	En : Enforcement	

**Flood Control Project Maintenance
Levee Inspections**

Maintenance Issue Types Only, Levee Inspection Report By Mile - Spring 2017

Brannan Andrus Levee Maintenance District

Waterway	Bank	Unit Miles	Inspection Start/End	Inspector
Unit No. 02 Sacramento River	Left	11.54	03/20/2017 03/20/2017	Richard Willoughby

LM Start	0.72	Rating **	U	Issue No.	97 (cont)	
LM End	0.72	Issue Type +	Ma	Location *	LS	
Category	Earthen Levee			GPS Latitude/Longitude		
				Start		End
Item	Trim / Thin Trees			38.187102 °		38.187102 °
				-121.579463 °		-121.579463 °
DWR ID	DWR_NA0002_02_f_2016_97					
Comment Code						
T1 : Trim trees to at least five feet above ground level.						
Inspector Comment						
Untrimmed fig tree on landward toe.						

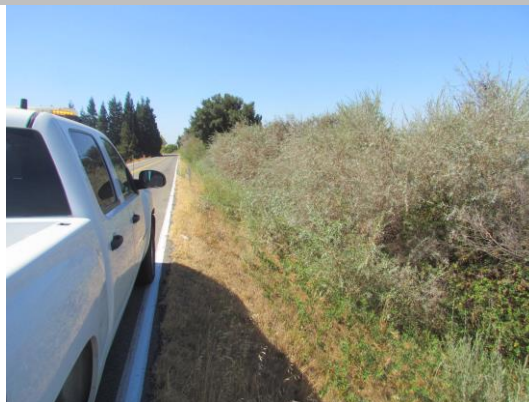
Photo 2 of 2 : SP_2017_NA0002_63_97_20170314_00064.jpg



Looking east at untrimmed fig tree at landward toe.

LM Start	0.73	Rating **	U	Issue No.	108
LM End	0.79	Issue Type +	Ma	Location *	WS
Category	Earthen Levee			GPS Latitude/Longitude	
				Start	End
Item	Vegetation			38.187031 °	38.186511 °
				-121.579588 °	-121.580470 °
DWR ID	DWR_NA0002_02_f_2016_108				
Comment Code					
V2 : Remove the wild growth other than native grasses from the levee slopes.					
Inspector Comment					
Dense willows on waterward slope.					

Photo 1 of 1 : SP_2017_NA0002_63_108_20170314_00075.jpg



Looking southwest at dense willow trees on waterward slope.

LM Start	0.79	Rating **	U	Issue No.	2
LM End	0.84	Issue Type +	Ma	Location *	WS
Category	Earthen Levee			GPS Latitude/Longitude	
				Start	End
Item	Trim / Thin Trees			38.186535 °	38.186103 °
				-121.580395 °	-121.581127 °
DWR ID	DWR_NA0002_02_s_2012_2				
Comment Code					
T2 : Thin trees to allow visibility of the ground and room to flood fight.					
Inspector Comment					
Untrimmed trees within twenty foot zone on waterward slope.					

Photo 1 of 1 : SP_2017_NA0002_63_2_20170314_00002.jpg



Looking southwest at dense willows and trees on waterward slope.

* Location
LS : Land Side N/A : Not Applicable
WS : Water Side
CR : Crown

** Rating
A : Acceptable N : Not Inspected/Rated
M : Minimally Acceptable C : Corrected
U : Unacceptable A/W : Acceptable but Monitor & Maintain

+ Issue Type
Ma : Maintenance Deficiency
Ob : Design & System Obsolescence
En : Enforcement

**Flood Control Project Maintenance
Levee Inspections**

Maintenance Issue Types Only, Levee Inspection Report By Mile - Spring 2017

Brannan Andrus Levee Maintenance District

Waterway	Bank	Unit Miles	Inspection Start/End	Inspector
Unit No. 02 Sacramento River	Left	11.54	03/20/2017 03/20/2017	Richard Willoughby

LM Start	1.07	Rating **	M	Issue No.	91
LM End	1.07	Issue Type +	Ma	Location *	WS
Category	Earthen Levee			GPS Latitude/Longitude	
				Start	End
Item	Encroachments			38.183586 °	38.183586 °
				-121.584010 °	-121.584010 °
DWR ID	DWR_NA0002_02_f_2015_91				
Comment Code					
TR : Tree or limb					
Inspector Comment					
Downed tree branches on waterward slope and berm.					

Photo 1 of 2 : SP_2017_NA0002_63_91_20170314_00054.jpg



Looking south west at fallen tree on waterward slope and berm.

LM Start	1.07	Rating **	M	Issue No.	91 (cont)
LM End	1.07	Issue Type +	Ma	Location *	WS

Photo 2 of 2 : SP_2017_NA0002_63_91_20170314_00055.jpg



Looking west at fallen tree on waterward slope and berm.

LM Start	1.16	Rating **	M	Issue No.	92
LM End	1.16	Issue Type +	Ma	Location *	WS
Category	Earthen Levee			GPS Latitude/Longitude	
				Start	End
Item	Encroachments			38.182527 °	38.182527 °
				-121.584901 °	-121.584901 °
DWR ID	DWR_NA0002_02_f_2015_92				
Comment Code					
TR : Tree or limb					
Inspector Comment					
Downed tree branch on waterward slope and berm.					

Photo 1 of 2 : SP_2017_NA0002_63_92_20170314_00056.jpg



Looking west at fallen tree branch on waterward berm. (Spring 2016)

* Location		** Rating		+ Issue Type	
LS : Land Side	N/A : Not Applicable	A : Acceptable	N : Not Inspected/Rated	Ma : Maintenance Deficiency	
WS : Water Side		M : Minimally Acceptable	C : Corrected	Ob : Design & System Obsolescence	
CR : Crown		U : Unacceptable	A/W : Acceptable but Monitor & Maintain	En : Enforcement	

**Flood Control Project Maintenance
Levee Inspections**

Maintenance Issue Types Only, Levee Inspection Report By Mile - Spring 2017

Brannan Andrus Levee Maintenance District

Waterway	Bank	Unit Miles	Inspection Start/End	Inspector
Unit No. 02 Sacramento River	Left	11.54	03/20/2017 03/20/2017	Richard Willoughby

LM Start	1.16	Rating **	M	Issue No.	92 (cont)	
LM End	1.16	Issue Type +	Ma	Location *	WS	
Category	Earthen Levee			GPS Latitude/Longitude		
				Start	End	
Item	Encroachments			38.182527 °	38.182527 °	
				-121.584901 °	-121.584901 °	
DWR ID	DWR_NA0002_02_f_2015_92					
Comment Code						
TR : Tree or limb						
Inspector Comment						
Downed tree branch on waterward slope and berm.						

Photo 2 of 2 : SP_2017_NA0002_63_92_20170314_00057.jpg



Looking at fallen tree on waterward slope and berm. (Spring 2015)

LM Start	1.40	Rating **	M	Issue No.	96
LM End	1.40	Issue Type +	Ma	Location *	LS
Category	Earthen Levee			GPS Latitude/Longitude	
				Start	End
Item	Encroachments			38.179543 °	38.179543 °
				-121.587226 °	-121.587226 °
DWR ID	DWR_NA0002_02_s_2015_96				
Comment Code					
TR : Tree or limb					
Inspector Comment					
Broken tree branch on landward toe.					

Photo 1 of 1 : SP_2017_NA0002_63_96_20170314_00062.jpg



Looking east at broken tree limb at landward toe.

LM Start	1.45	Rating **	U	Issue No.	27
LM End	1.47	Issue Type +	Ma	Location *	LS
Category	Earthen Levee			GPS Latitude/Longitude	
				Start	End
Item	Trim / Thin Trees			38.178950 °	38.178950 °
				-121.587717 °	-121.587717 °
DWR ID	DWR_NA0002_02_s_2012_27				
Comment Code					
T1 : Trim trees to at least five feet above ground level.					
Inspector Comment					
Dense vegetation should be trimmed back fifteen feet from landward toe.					

Photo 1 of 4 : SP_2017_NA0002_63_27_20170314_00029.jpg



Looking east at dense vegetation at landward toe.

*** Location**

LS : Land Side N/A : Not Applicable
WS : Water Side
CR : Crown

**** Rating**

A : Acceptable N : Not Inspected/Rated
M : Minimally Acceptable C : Corrected
U : Unacceptable A/W : Acceptable but Monitor & Maintain

+ Issue Type

Ma : Maintenance Deficiency
Ob : Design & System Obsolescence
En : Enforcement

**Flood Control Project Maintenance
Levee Inspections**

Maintenance Issue Types Only, Levee Inspection Report By Mile - Spring 2017

Brannan Andrus Levee Maintenance District

Waterway	Bank	Unit Miles	Inspection Start/End	Inspector
Unit No. 02 Sacramento River	Left	11.54	03/20/2017 03/20/2017	Richard Willoughby

LM Start	1.45	Rating **	U	Issue No.	27 (cont)	
LM End	1.47	Issue Type +	Ma	Location *	LS	
Category	Earthen Levee			GPS Latitude/Longitude		
				Start		End
Item	Trim / Thin Trees			38.178950 °		38.178950 °
				-121.587717 °		-121.587717 °
DWR ID	DWR_NA0002_02_s_2012_27					
Comment Code						
T1 : Trim trees to at least five feet above ground level.						
Inspector Comment						
Dense vegetation should be trimmed back fifteen feet from landward toe.						

LM Start	1.45	Rating **	U	Issue No.	27 (cont)
LM End	1.47	Issue Type +	Ma	Location *	LS

Photo 2 of 4 : SP_2017_NA0002_63_27_20170314_00030.jpg



Looking east at dense vegetation at landward toe.

Photo 3 of 4 : SP_2017_NA0002_63_27_20170314_00031.jpg



Looking east at dense vegetation on landward toe.

LM Start	1.45	Rating **	U	Issue No.	27 (cont)
LM End	1.47	Issue Type +	Ma	Location *	LS

Photo 4 of 4 : SP_2017_NA0002_63_27_20170314_00032.jpg



Looking southeast at dense trees on landside toe.

* Location LS : Land Side N/A : Not Applicable WS : Water Side CR : Crown		** Rating A : Acceptable M : Minimally Acceptable U : Unacceptable		N : Not Inspected/Rated C : Corrected A/W : Acceptable but Monitor & Maintain		+ Issue Type Ma : Maintenance Deficiency Ob : Design & System Obsolescence En : Enforcement	
---	--	---	--	---	--	--	--

**Flood Control Project Maintenance
Levee Inspections**

Maintenance Issue Types Only, Levee Inspection Report By Mile - Spring 2017

Brannan Andrus Levee Maintenance District

Waterway	Bank	Unit Miles	Inspection Start/End	Inspector
Unit No. 02 Sacramento River	Left	11.54	03/20/2017 03/20/2017	Richard Willoughby

LM Start	1.46	Rating **	U	Issue No.	109
LM End	1.46	Issue Type +	Ma	Location *	WS
Category	Earthen Levee			GPS Latitude/Longitude	
				Start	End
Item	Encroachments			38.178805 °	38.178805 °
				-121.587850 °	-121.587850 °
DWR ID	DWR_NA0002_02_s_2016_109				
Comment Code					
TR : Tree or limb					
Inspector Comment					
Downed tree branches and limbs on landward slope.					

Photo 1 of 2 : SP_2017_NA0002_63_109_20170324_00183.jpg



Looking southwest at fallen tree on waterward slope.

LM Start	1.46	Rating **	U	Issue No.	109 (cont)
LM End	1.46	Issue Type +	Ma	Location *	WS

Photo 2 of 2 : SP_2017_NA0002_63_109_20170324_00184.jpg



Looking west at fallen tree on waterward slope.

LM Start	1.60	Rating **	M	Issue No.	35
LM End	1.62	Issue Type +	Ma	Location *	LS
Category	Earthen Levee			GPS Latitude/Longitude	
				Start	End
Item	Trim / Thin Trees			38.177105 °	38.176837 °
				-121.589058 °	-121.589225 °
DWR ID	DWR_NA0002_02_s_2012_35				
Comment Code					
T1 : Trim trees to at least five feet above ground level.					
Inspector Comment					

No Photos

* Location LS : Land Side N/A : Not Applicable WS : Water Side CR : Crown		** Rating A : Acceptable N : Not Inspected/Rated M : Minimally Acceptable C : Corrected U : Unacceptable A/W : Acceptable but Monitor & Maintain		+ Issue Type Ma : Maintenance Deficiency Ob : Design & System Obsolescence En : Enforcement
--	--	---	--	---

**Flood Control Project Maintenance
Levee Inspections**

Maintenance Issue Types Only, Levee Inspection Report By Mile - Spring 2017

Brannan Andrus Levee Maintenance District

Waterway	Bank	Unit Miles	Inspection Start/End	Inspector
Unit No. 02 Sacramento River	Left	11.54	03/20/2017 03/20/2017	Richard Willoughby

LM Start	1.69	Rating **	C	Issue No.	119
LM End	1.69	Issue Type +	Ma	Location *	WS
Category	Earthen Levee			GPS Latitude/Longitude	
				Start	End
Item	Encroachments			38.175860 °	38.175860 °
				-121.589901 °	-121.589901 °
DWR ID	DWR_NA0002_02_f_2016_119				
Comment Code					
TR : Tree or limb					
Inspector Comment					
Broken tree branch on waterward slope.					

No Photos

LM Start	1.80	Rating **	U	Issue No.	45
LM End	1.82	Issue Type +	Ma	Location *	LS
Category	Earthen Levee			GPS Latitude/Longitude	
				Start	End
Item	Vegetation			38.174437 °	38.174153 °
				-121.590786 °	-121.590980 °
DWR ID	DWR_NA0002_02_f_2013_45				
Comment Code					
V2 : Remove the wild growth other than native grasses from the levee slopes.					
Inspector Comment					
Dense vegetation on landward slope and toe					

Photo 1 of 2 : SP_2017_NA0002_63_45_20170314_00045.jpg



Looking southwest at dense vegetation on landward slope.

LM Start	1.80	Rating **	U	Issue No.	45 (cont)
LM End	1.82	Issue Type +	Ma	Location *	LS

Photo 2 of 2 : SP_2017_NA0002_63_45_20170314_00046.jpg



Looking northeast at dense vegetation on landward slope and toe.

* Location LS : Land Side N/A : Not Applicable WS : Water Side CR : Crown		** Rating A : Acceptable M : Minimally Acceptable U : Unacceptable		N : Not Inspected/Rated C : Corrected A/W : Acceptable but Monitor & Maintain		+ Issue Type Ma : Maintenance Deficiency Ob : Design & System Obsolescence En : Enforcement	
--	--	--	--	---	--	---	--

**Flood Control Project Maintenance
Levee Inspections**

Maintenance Issue Types Only, Levee Inspection Report By Mile - Spring 2017

Brannan Andrus Levee Maintenance District

Waterway	Bank	Unit Miles	Inspection Start/End	Inspector
Unit No. 02 Sacramento River	Left	11.54	03/20/2017 03/20/2017	Richard Willoughby

LM Start	1.84	Rating **	A/W	Issue No.	4
LM End	1.84	Issue Type +	Ma	Location *	LS
Category	Earthen Levee			GPS Latitude/Longitude	
				Start	End
Item	Trim / Thin Trees			38.173905 °	38.173905 °
				-121.591082 °	-121.591082 °
DWR ID	DWR_NA0002_02_s_2012_4				
Comment Code					
T1 : Trim trees to at least five feet above ground level.					
Inspector Comment					

No Photos

LM Start	1.87	Rating **	M	Issue No.	93
LM End	1.89	Issue Type +	Ma	Location *	LS
Category	Earthen Levee			GPS Latitude/Longitude	
				Start	End
Item	Encroachments			38.173571 °	38.173288 °
				-121.591343 °	-121.591531 °
DWR ID	DWR_NA0002_02_f_2015_93				
Comment Code					
TR : Tree or limb					
Inspector Comment					
Broken tree limbs on landward slope and toe.					

Photo 1 of 2 : SP_2017_NA0002_63_93_20170314_00058.jpg



Looking southeast at broken tree limb on landward slope.

LM Start	1.87	Rating **	M	Issue No.	93 (cont)
LM End	1.89	Issue Type +	Ma	Location *	LS

Photo 2 of 2 : SP_2017_NA0002_63_93_20170314_00059.jpg



Looking east at broken tree limb at landward toe.

* Location LS : Land Side N/A : Not Applicable WS : Water Side CR : Crown		** Rating A : Acceptable M : Minimally Acceptable U : Unacceptable		N : Not Inspected/Rated C : Corrected A/W : Acceptable but Monitor & Maintain		+ Issue Type Ma : Maintenance Deficiency Ob : Design & System Obsolescence En : Enforcement	
--	--	--	--	---	--	---	--

**Flood Control Project Maintenance
Levee Inspections**

Maintenance Issue Types Only, Levee Inspection Report By Mile - Spring 2017

Brannan Andrus Levee Maintenance District

Waterway	Bank	Unit Miles	Inspection Start/End	Inspector
Unit No. 02 Sacramento River	Left	11.54	03/20/2017 03/20/2017	Richard Willoughby

LM Start	2.16	Rating **	M	Issue No.	120
LM End	2.16	Issue Type +	Ma	Location *	LS
Category	Earthen Levee			GPS Latitude/Longitude	
				Start	End
Item	Vegetation			38.169814 °	38.169814 °
				-121.593951 °	-121.593951 °
DWR ID	DWR_NA0002_02_f_2016_120				
Comment Code					
V2 : Remove the wild growth other than native grasses from the levee slopes.					
Inspector Comment					
Fig tree saplings on landward slope.					

Photo 1 of 1 : SP_2017_NA0002_63_120_20170314_00090.jpg



Looking northeast at fig tree saplings at landward toe.

LM Start	2.34	Rating **	U	Issue No.	25
LM End	2.38	Issue Type +	Ma	Location *	LS
Category	Earthen Levee			GPS Latitude/Longitude	
				Start	End
Item	Trim / Thin Trees			38.167627 °	38.167152 °
				-121.595538 °	-121.595997 °
DWR ID	DWR_NA0002_02_s_2012_25				
Comment Code					
T2 : Thin trees to allow visibility of the ground and room to flood fight.					
Inspector Comment					

Photo 1 of 1 : SP_2017_NA0002_63_25_20170314_00027.jpg



Looking southeast at trees at landward shoulder. (Spring 2015)

LM Start	2.42	Rating **	U	Issue No.	99
LM End	2.42	Issue Type +	Ma	Location *	LS
Category	Earthen Levee			GPS Latitude/Longitude	
				Start	End
Item	Vegetation			38.166772 °	38.166772 °
				-121.596667 °	-121.596667 °
DWR ID	DWR_NA0002_02_s_2014_99				
Comment Code					
V2 : Remove the wild growth other than native grasses from the levee slopes.					
Inspector Comment					
Dense willows on landward slope.					

Photo 1 of 2 : SP_2017_NA0002_63_99_20170314_00065.jpg



Looking southwest at vegetation (willows) on landward slope and toe.

* Location
LS : Land Side N/A : Not Applicable
WS : Water Side
CR : Crown

** Rating
A : Acceptable N : Not Inspected/Rated
M : Minimally Acceptable C : Corrected
U : Unacceptable A/W : Acceptable but Monitor & Maintain

+ Issue Type
Ma : Maintenance Deficiency
Ob : Design & System Obsolescence
En : Enforcement

**Flood Control Project Maintenance
Levee Inspections**

Maintenance Issue Types Only, Levee Inspection Report By Mile - Spring 2017

Brannan Andrus Levee Maintenance District

Waterway	Bank	Unit Miles	Inspection Start/End	Inspector
Unit No. 02 Sacramento River	Left	11.54	03/20/2017 03/20/2017	Richard Willoughby

LM Start	2.42	Rating **	U	Issue No.	99 (cont)	
LM End	2.42	Issue Type +	Ma	Location *	LS	
Category	Earthen Levee			GPS Latitude/Longitude		
				Start		End
Item	Vegetation			38.166772 °		38.166772 °
				-121.596667 °		-121.596667 °
DWR ID	DWR_NA0002_02_s _ 2014_99					
Comment Code						
V2 : Remove the wild growth other than native grasses from the levee slopes.						
Inspector Comment						
Dense willows on landward slope.						

Photo 2 of 2 : SP_2017_NA0002_63_99_20170314_00066.jpg



LM Start	2.48	Rating **	U	Issue No.	29
LM End	2.48	Issue Type +	Ma	Location *	LS
Category	Earthen Levee			GPS Latitude/Longitude	
				Start	End
Item	Trim / Thin Trees			38.166378 °	38.166378 °
				-121.597570 °	-121.597570 °
DWR ID	DWR_NA0002_02_s _ 2012_29				
Comment Code					
T1 : Trim trees to at least five feet above ground level.					
Inspector Comment					

Photo 1 of 2 : SP_2017_NA0002_63_29_20170314_00034.jpg



Looking northeast at dense vegetation on landward slope.

LM Start	2.48	Rating **	U	Issue No.	29 (cont)
LM End	2.48	Issue Type +	Ma	Location *	LS

Photo 2 of 2 : SP_2017_NA0002_63_29_20170314_00035.jpg



Looking southwest at dense vegetation on landward slope.

* Location LS : Land Side N/A : Not Applicable WS : Water Side CR : Crown		** Rating A : Acceptable M : Minimally Acceptable U : Unacceptable		N : Not Inspected/Rated C : Corrected A/W : Acceptable but Monitor & Maintain		+ Issue Type Ma : Maintenance Deficiency Ob : Design & System Obsolescence En : Enforcement	
--	--	--	--	---	--	---	--

**Flood Control Project Maintenance
Levee Inspections**

Maintenance Issue Types Only, Levee Inspection Report By Mile - Spring 2017

Brannan Andrus Levee Maintenance District

Waterway	Bank	Unit Miles	Inspection Start/End	Inspector
Unit No. 02 Sacramento River	Left	11.54	03/20/2017 03/20/2017	Richard Willoughby

LM Start	2.54	Rating **	U	Issue No.	129
LM End	2.54	Issue Type +	Ma	Location *	LS
Category	Supplemental			GPS Latitude/Longitude	
				Start	End
Item	DWR UCIP LMA Responsibility			38.165980 °	38.165980 °
				-121.598520 °	-121.598520 °
DWR ID					

Comment Code

Inspector Comment

FS_ID:51314
DS_ID:21879
EP_NO: N/A
Repair Type: Urgent
Crossing Status: Found
UCIP Comments: 10/24/2016 same as previous inspection culvert is open on both ends. WS blocked by blankets -- WS structure is being used as a shelter. (O. Magana - DWR UCIP)04/18/2013 Culvert open on both ends. Needs to be abandoned properly. (W. Wylie - DWR UCIP)
FIELD_STRUCT_DESC: *ABANDONED* 3.5-foot by 3.5-foot open concrete culvert through levee, 6 feet below the crown. [Additional Reference(s): DWR Levee Log, 2005. USACE Sacramento O&M Manual Unit 103, June 1954, (RM 18.16), Drawing No. 6-13-1100].
FS Date: 10/24/2016

LM Start	2.54	Rating **	U	Issue No.	129 (cont)
LM End	2.54	Issue Type +	Ma	Location *	LS

Photo 1 of 3 : UCIP_SP_2017_51314_19773.jpg



Concrete tunnel open on both ends.

Photo 2 of 3 : UCIP_SP_2017_51314_19772.jpg



Top of concrete tunnel on LS shoulder.

* Location LS : Land Side N/A : Not Applicable WS : Water Side CR : Crown		** Rating A : Acceptable N : Not Inspected/Rated M : Minimally Acceptable C : Corrected U : Unacceptable A/W : Acceptable but Monitor & Maintain		+ Issue Type Ma : Maintenance Deficiency Ob : Design & System Obsolescence En : Enforcement
--	--	---	--	---

**Flood Control Project Maintenance
Levee Inspections**

Maintenance Issue Types Only, Levee Inspection Report By Mile - Spring 2017

Brannan Andrus Levee Maintenance District

Waterway	Bank	Unit Miles	Inspection Start/End	Inspector
Unit No. 02 Sacramento River	Left	11.54	03/20/2017 03/20/2017	Richard Willoughby

LM Start	2.54	Rating **	U	Issue No.	129 (cont)	
LM End	2.54	Issue Type +	Ma	Location *	LS	
Category	Supplemental			GPS Latitude/Longitude		
				Start	End	
Item	DWR UCIP LMA Responsibility			38.165980 °	38.165980 °	
				-121.598520 °	-121.598520 °	
DWR ID						
Comment Code						
Inspector Comment						
FS_ID:51314						
DS_ID:21879						
EP_NO: N/A						
Repair Type: Urgent						
Crossing Status: Found						
UCIP Comments: 10/24/2016 same as previous inspection culvert is open on both ends. WS blocked by blankets -- WS structure is being used as a shelter. (O. Magana - DWR UCIP)04/18/2013 Culvert open on both ends. Needs to be abandoned properly. (W. Wylie - DWR UCIP)						
FIELD_STRUCT_DESC: *ABANDONED* 3.5-foot by 3.5-foot open concrete culvert through levee, 6 feet below the crown. [Additional Reference(s): DWR Levee Log, 2005. USACE Sacramento O&M Manual Unit 103, June 1954, (RM 18.16), Drawing No. 6-13-1100].						
FS Date: 10/24/2016						

Photo 3 of 3 : UCIP_SP_2017_51314_19771.jpg



Concrete tunnel on LS shoulder.

LM Start	2.57	Rating **	U	Issue No.	130
LM End	2.57	Issue Type +	Ma	Location *	LS
Category	Supplemental			GPS Latitude/Longitude	
				Start	End
Item	DWR UCIP LMA Responsibility			38.165775 °	38.165775 °
				-121.599048 °	-121.599048 °
DWR ID					
Comment Code					
Inspector Comment					
FS_ID:51315 DS_ID:21880 EP_NO: N/A Repair Type: Urgent Crossing Status: Found UCIP Comments: 10/24/2016 same as previous inspection concrete box culvert will need to be abandoned properly. (O. Magana - DWR UCIP)04/18/2013 tunnel should be abandoned properly. (W. Wylie - DWR UCIP) FIELD_STRUCT_DESC: *ABANDONED* 4-feet by 4-feet drainage concrete culvert through levee, 6.5-inches below the crown. [Additional Reference(s): DWR Levee Log, 2005. USACE Sacramento O&M Manual Unit 103, June 1954, (RM 18.16), Drawing No. 6-13-1100]. FS Date: 10/24/2016					

Photo 1 of 3 : UCIP_SP_2017_51315_19776.jpg



Tunnel open on LS shoulder.

* Location LS : Land Side N/A : Not Applicable WS : Water Side CR : Crown		** Rating A : Acceptable M : Minimally Acceptable U : Unacceptable		N : Not Inspected/Rated C : Corrected A/W : Acceptable but Monitor & Maintain		+ Issue Type Ma : Maintenance Deficiency Ob : Design & System Obsolescence En : Enforcement	
--	--	--	--	---	--	---	--

**Flood Control Project Maintenance
Levee Inspections**

Maintenance Issue Types Only, Levee Inspection Report By Mile - Spring 2017

Brannan Andrus Levee Maintenance District

Waterway	Bank	Unit Miles	Inspection Start/End	Inspector
Unit No. 02 Sacramento River	Left	11.54	03/20/2017 03/20/2017	Richard Willoughby

LM Start	2.57	Rating **	U	Issue No.	130 (cont)
LM End	2.57	Issue Type +	Ma	Location *	LS
Category	Supplemental			GPS Latitude/Longitude	
				Start	End
Item	DWR UCIP LMA Responsibility			38.165775 °	38.165775 °
				-121.599048 °	-121.599048 °
DWR ID					

Comment Code

Inspector Comment

FS_ID:51315
DS_ID:21880
EP_NO: N/A
Repair Type: Urgent
Crossing Status: Found
UCIP Comments: 10/24/2016 same as previous inspection concrete box culvert will need to be abandoned properly. (O. Magana - DWR UCIP)04/18/2013 tunnel should be abandoned properly. (W. Wylie - DWR UCIP)
FIELD_STRUCT_DESC: *ABANDONED* 4-feet by 4-feet drainage concrete culvert through levee, 6.5-inches below the crown. [Additional Reference(s): DWR Levee Log, 2005. USACE Sacramento O&M Manual Unit 103, June 1954, (RM 18.16), Drawing No. 6-13-1100].
FS Date: 10/24/2016

LM Start	2.57	Rating **	U	Issue No.	130 (cont)
LM End	2.57	Issue Type +	Ma	Location *	LS

Photo 2 of 3 : UCIP_SP_2017_51315_19775.jpg



Concrete tunnel on LS shoulder.

Photo 3 of 3 : UCIP_SP_2017_51315_19774.jpg



10'X5' concrete box on WS slope, filled with soil.

* Location LS : Land Side N/A : Not Applicable WS : Water Side CR : Crown		** Rating A : Acceptable M : Minimally Acceptable U : Unacceptable N : Not Inspected/Rated C : Corrected A/W : Acceptable but Monitor & Maintain		+ Issue Type Ma : Maintenance Deficiency Ob : Design & System Obsolescence En : Enforcement	
---	--	--	--	--	--

**Flood Control Project Maintenance
Levee Inspections**

Maintenance Issue Types Only, Levee Inspection Report By Mile - Spring 2017

Brannan Andrus Levee Maintenance District

Waterway	Bank	Unit Miles	Inspection Start/End	Inspector
Unit No. 02 Sacramento River	Left	11.54	03/20/2017 03/20/2017	Richard Willoughby

LM Start	2.58	Rating **	M	Issue No.	18
LM End	2.63	Issue Type +	Ma	Location *	WS
Category	Supplemental			GPS Latitude/Longitude	
				Start	End
Item	2015 USACE Erosion Survey, DRAFT			38.165945 °	38.165498 °
				-121.599345 °	-121.600080 °
DWR ID	DWR_NA0002_02_s _ 2016_18				
Comment Code					
Inspector Comment					
2009 - Short reach of vertical bank at the toe. 2010 - Large tree is getting ready to fall in. 2015: Freshly exposed tree roots. [2015 Site ID: SAC_18-1_L]					

No Photos

LM Start	2.66	Rating **	M	Issue No.	37
LM End	2.74	Issue Type +	Ma	Location *	WS
Category	Supplemental			GPS Latitude/Longitude	
				Start	End
Item	2015 USACE Erosion Survey, DRAFT			38.165303 °	38.164682 °
				-121.600477 °	-121.601804 °
DWR ID	DWR_NA0002_02_s _ 2016_37				
Comment Code					
Inspector Comment					
2009 - Large scallop from rotational failure. One fallen tree and one large tree with half of its root structure exposed. 2015: Large tree expected to pop out within next couple of years, will take very large chunk of levee out. [2015 Site ID: SAC_18-0_L]					

Photo 1 of 2 : SP_2017_NA0002_63_37_20170314_00040.jpg



USACE 2013 Photo #1

LM Start	2.66	Rating **	M	Issue No.	37 (cont)
LM End	2.74	Issue Type +	Ma	Location *	WS

Photo 2 of 2 : SP_2017_NA0002_63_37_20170314_00041.jpg



USACE 2013 Photo #2

* Location LS : Land Side N/A : Not Applicable WS : Water Side CR : Crown		** Rating A : Acceptable M : Minimally Acceptable U : Unacceptable		N : Not Inspected/Rated C : Corrected A/W : Acceptable but Monitor & Maintain		+ Issue Type Ma : Maintenance Deficiency Ob : Design & System Obsolescence En : Enforcement	
--	--	--	--	---	--	---	--

**Flood Control Project Maintenance
Levee Inspections**

Maintenance Issue Types Only, Levee Inspection Report By Mile - Spring 2017

Brannan Andrus Levee Maintenance District

Waterway	Bank	Unit Miles	Inspection Start/End	Inspector
Unit No. 02 Sacramento River	Left	11.54	03/20/2017 03/20/2017	Richard Willoughby

LM Start	2.84	Rating **	U	Issue No.	132
LM End	2.84	Issue Type +	Ma	Location *	WS
Category	Supplemental			GPS Latitude/Longitude	
				Start	End
Item	DWR UCIP LMA Responsibility			38.163850 °	38.163850 °
				-121.603317 °	-121.603317 °
DWR ID					

Comment Code

Inspector Comment

FS_ID:51316
DS_ID:21882
EP_NO: N/A
Repair Type: Urgent
Crossing Status: Found
UCIP Comments: 10/24/2016 same as previous inspection tunnel is opened on both ends. (O. Magana - DWR UCIP)04/18/2013 Tunnel open on both ends and should be abandoned properly. (W. Wylie - DWR UCIP)
FIELD_STRUCT_DESC: *ABANDONED* 4-foot by 6-foot drainage concrete culvert through levee 1 foot below the crown. [Additional Reference(s): DWR Levee Log, 2005. USACE Sacramento O&M Manual Unit 103, June 1954, (RM 17.89), Drawing No. 6-13-1100].
FS Date: 10/24/2016

LM Start	2.84	Rating **	U	Issue No.	132 (cont)
LM End	2.84	Issue Type +	Ma	Location *	WS

Photo 1 of 3 : UCIP_SP_2017_51316_19782.jpg



Entrance to tunnel on LS slope.

Photo 2 of 3 : UCIP_SP_2017_51316_19781.jpg



Tunnel opening on WS slope.

* Location LS : Land Side N/A : Not Applicable WS : Water Side CR : Crown		** Rating A : Acceptable N : Not Inspected/Rated M : Minimally Acceptable C : Corrected U : Unacceptable A/W : Acceptable but Monitor & Maintain		+ Issue Type Ma : Maintenance Deficiency Ob : Design & System Obsolescence En : Enforcement
--	--	---	--	---

**Flood Control Project Maintenance
Levee Inspections**

Maintenance Issue Types Only, Levee Inspection Report By Mile - Spring 2017

Brannan Andrus Levee Maintenance District

Waterway	Bank	Unit Miles	Inspection Start/End	Inspector
Unit No. 02 Sacramento River	Left	11.54	03/20/2017 03/20/2017	Richard Willoughby

LM Start	2.84	Rating **	U	Issue No.	132 (cont)
LM End	2.84	Issue Type +	Ma	Location *	WS
Category	Supplemental			GPS Latitude/Longitude	
				Start	End
Item	DWR UCIP LMA Responsibility			38.163850 °	38.163850 °
				-121.603317 °	-121.603317 °
DWR ID					
Comment Code					
Inspector Comment					
FS_ID:51316 DS_ID:21882 EP_NO: N/A Repair Type: Urgent Crossing Status: Found UCIP Comments: 10/24/2016 same as previous inspection tunnel is opened on both ends. (O. Magana - DWR UCIP)04/18/2013 Tunnel open on both ends and should be abandoned properly. (W. Wylie - DWR UCIP) FIELD_STRUCT_DESC: *ABANDONED* 4-foot by 6-foot drainage concrete culvert through levee 1 foot below the crown. [Additional Reference(s): DWR Levee Log, 2005. USACE Sacramento O&M Manual Unit 103, June 1954, (RM 17.89), Drawing No. 6-13-1100]. FS Date: 10/24/2016					

Photo 3 of 3 : UCIP_SP_2017_51316_19780.jpg



Tunnel opening on WS slope.

LM Start	3.13	Rating **	C	Issue No.	104
LM End	3.13	Issue Type +	Ma	Location *	WS
Category	Earthen Levee			GPS Latitude/Longitude	
				Start	End
Item	Vegetation			38.162718 °	38.162718 °
				-121.608452 °	-121.608452 °
DWR ID	DWR_NA0002_02_f_2014_104				
Comment Code					
V7 : Trees / Woody Vegetation					
Inspector Comment					

No Photos

* Location LS : Land Side N/A : Not Applicable WS : Water Side CR : Crown		** Rating A : Acceptable M : Minimally Acceptable U : Unacceptable N : Not Inspected/Rated C : Corrected A/W : Acceptable but Monitor & Maintain		+ Issue Type Ma : Maintenance Deficiency Ob : Design & System Obsolescence En : Enforcement
--	--	---	--	---

**Flood Control Project Maintenance
Levee Inspections**

Maintenance Issue Types Only, Levee Inspection Report By Mile - Spring 2017

Brannan Andrus Levee Maintenance District

Waterway	Bank	Unit Miles	Inspection Start/End	Inspector
Unit No. 02 Sacramento River	Left	11.54	03/20/2017 03/20/2017	Richard Willoughby

LM Start	3.17	Rating **	M	Issue No.	5
LM End	3.17	Issue Type +	Ma	Location *	WS
Category	Earthen Levee			GPS Latitude/Longitude	
				Start	End
Item	Trim / Thin Trees			38.162638 °	38.162638 °
				-121.609068 °	-121.609068 °
DWR ID	DWR_NA0002_02_s_2012_5				
Comment Code					
T4 : Trim trees over roadway to at least 12 feet above ground level.					
Inspector Comment					

Photo 1 of 2 : SP_2017_NA0002_63_5_20170314_00003.jpg



Looking west at overhanging tree on waterward shoulder. (Fall 2014)

LM Start	3.17	Rating **	M	Issue No.	5 (cont)
LM End	3.17	Issue Type +	Ma	Location *	WS

Photo 2 of 2 : SP_2017_NA0002_63_5_20170314_00004.jpg



Looking west at overhanging tree on waterside shoulder.

LM Start	3.20	Rating **	C	Issue No.	6
LM End	3.20	Issue Type +	Ma	Location *	WS
Category	Earthen Levee			GPS Latitude/Longitude	
				Start	End
Item	Trim / Thin Trees			38.162643 °	38.162643 °
				-121.609616 °	-121.609616 °
DWR ID	DWR_NA0002_02_s_2012_6				
Comment Code					
T4 : Trim trees over roadway to at least 12 feet above ground level.					
Inspector Comment					

No Photos

* Location		** Rating		+ Issue Type	
LS : Land Side	N/A : Not Applicable	A : Acceptable	N : Not Inspected/Rated	Ma : Maintenance Deficiency	
WS : Water Side		M : Minimally Acceptable	C : Corrected	Ob : Design & System Obsolescence	
CR : Crown		U : Unacceptable	A/W : Acceptable but Monitor & Maintain	En : Enforcement	

**Flood Control Project Maintenance
Levee Inspections**

Maintenance Issue Types Only, Levee Inspection Report By Mile - Spring 2017

Brannan Andrus Levee Maintenance District

Waterway	Bank	Unit Miles	Inspection Start/End	Inspector
Unit No. 02 Sacramento River	Left	11.54	03/20/2017 03/20/2017	Richard Willoughby

LM Start	3.37	Rating **	U	Issue No.	34
LM End	3.56	Issue Type +	Ma	Location *	WS
Category	Supplemental			GPS Latitude/Longitude	
				Start	End
Item	2015 USACE Erosion Survey, DRAFT			38.162641 °	38.162828 °
				-121.612800 °	-121.616263 °
DWR ID	DWR NA0002 02 s 2016 34				

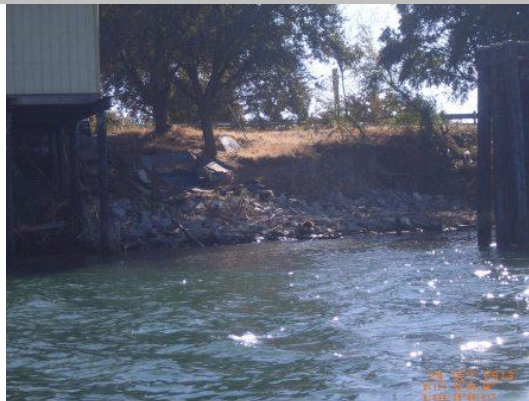
Comment Code

Inspector Comment

2009 - Fluvial erosion, into the levee slope, close to vertical bank with roadway on top. Pilings that were once at the bankline are now 30 ft out. 2010 - Very steep slope with slumps and overturned trees. 2011 - Upgraded to CRITICAL. Sections of vertical slope with highway on top. Heavy vegetation in front of most of the erosion pockets. Structures built into the levee on the upstream end. 2012 - Site continues to worsen. 2013 - Some rock added on the upstream end, but site remains critical. 2015: More rock has been placed in spots along the toe, but it is still insufficient. [2015 Site ID: SAC_17-2_L]

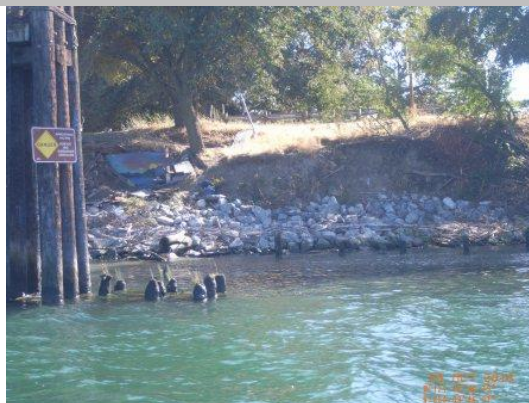
LM Start	3.37	Rating **	U	Issue No.	34 (cont)
LM End	3.56	Issue Type +	Ma	Location *	WS

Photo 1 of 2 : SP_2017_NA0002_63_34_20170314_00038.jpg



USACE 2013 Photo #1

Photo 2 of 2 : SP_2017_NA0002_63_34_20170314_00039.jpg



USACE 2013 Photo #2

* Location LS : Land Side N/A : Not Applicable WS : Water Side CR : Crown		** Rating A : Acceptable N : Not Inspected/Rated M : Minimally Acceptable C : Corrected U : Unacceptable A/W : Acceptable but Monitor & Maintain		+ Issue Type Ma : Maintenance Deficiency Ob : Design & System Obsolescence En : Enforcement
--	--	---	--	---

**Flood Control Project Maintenance
Levee Inspections**

Maintenance Issue Types Only, Levee Inspection Report By Mile - Spring 2017

Brannan Andrus Levee Maintenance District

Waterway	Bank	Unit Miles	Inspection Start/End	Inspector
Unit No. 02 Sacramento River	Left	11.54	03/20/2017 03/20/2017	Richard Willoughby

LM Start	3.39	Rating **	M	Issue No.	100
LM End	3.42	Issue Type +	Ma	Location *	WS
Category	Earthen Levee			GPS Latitude/Longitude	
				Start	End
Item	Vegetation			38.162394 °	38.162432 °
				-121.613146 °	-121.613637 °
DWR ID	DWR_NA0002_02_s _ 2014_100				
Comment Code					
V2 : Remove the wild growth other than native grasses from the levee slopes.					
Inspector Comment					
Bamboo on waterward slope.					

Photo 1 of 1 : SP_2017_NA0002_63_100_20170314_00067.jpg



Looking southwest at vegetation (bamboo) on waterward slope.

LM Start	3.51	Rating **	U	Issue No.	22
LM End	3.58	Issue Type +	Ma	Location *	LS
Category	Earthen Levee			GPS Latitude/Longitude	
				Start	End
Item	Trim / Thin Trees			38.162590 °	38.162728 °
				-121.615345 °	-121.616622 °
DWR ID	DWR_NA0002_02_s _ 2012_22				
Comment Code					
T1 : Trim trees to at least five feet above ground level.					
Inspector Comment					
Untrimmed trees on landward slope and toe.					

Photo 1 of 1 : SP_2017_NA0002_63_22_20170314_00025.jpg



Looking south at dense vegetation (trees) on landward slope and toe.

* Location LS : Land Side N/A : Not Applicable WS : Water Side CR : Crown		** Rating A : Acceptable N : Not Inspected/Rated M : Minimally Acceptable C : Corrected U : Unacceptable A/W : Acceptable but Monitor & Maintain		+ Issue Type Ma : Maintenance Deficiency Ob : Design & System Obsolescence En : Enforcement
--	--	---	--	---

**Flood Control Project Maintenance
Levee Inspections**

Maintenance Issue Types Only, Levee Inspection Report By Mile - Spring 2017

Brannan Andrus Levee Maintenance District

Waterway	Bank	Unit Miles	Inspection Start/End	Inspector
Unit No. 02 Sacramento River	Left	11.54	03/20/2017 03/20/2017	Richard Willoughby

LM Start	3.62	Rating **	U	Issue No.	20
LM End	3.73	Issue Type +	Ma	Location *	WS
Category	Supplemental			GPS Latitude/Longitude	
				Start	End
Item	2015 USACE Erosion Survey, DRAFT			38.162959 °	38.163334 °
				-121.617323 °	-121.619312 °
DWR ID	DWR_NA0002_02_s _ 2016_20				
Comment Code					
Inspector Comment					
2008 - Overstepped levee section with pocket erosion. Plans for repair currently in the design phase. 2010 - Very steep slope with slumps, longitudinal cracking, and overturned trees. 2011 - Upgraded to CRITICAL. Sections of vertical slope with highway on top. Heavy vegetation in front of most of the erosion pockets. 2015: New rock placed on the levee slope for most of the downstream end, but bad spots still remain. [2015 Site ID: SAC_16-8_L]					

Photo 1 of 1 : SP_2017_NA0002_63_20_20170314_00023.jpg



USACE 2013 Photo #1

LM Start	3.73	Rating **	M	Issue No.	114
LM End	3.73	Issue Type +	Ma	Location *	LS
Category	Earthen Levee			GPS Latitude/Longitude	
				Start	End
Item	Trim / Thin Trees			38.163163 °	38.163163 °
				-121.619370 °	-121.619370 °
DWR ID	DWR_NA0002_02_s _ 2016_114				
Comment Code					
T1 : Trim trees to at least five feet above ground level.					
Inspector Comment					

No Photos

* Location LS : Land Side N/A : Not Applicable WS : Water Side CR : Crown		** Rating A : Acceptable N : Not Inspected/Rated M : Minimally Acceptable C : Corrected U : Unacceptable A/W : Acceptable but Monitor & Maintain		+ Issue Type Ma : Maintenance Deficiency Ob : Design & System Obsolescence En : Enforcement
--	--	---	--	---

**Flood Control Project Maintenance
Levee Inspections**

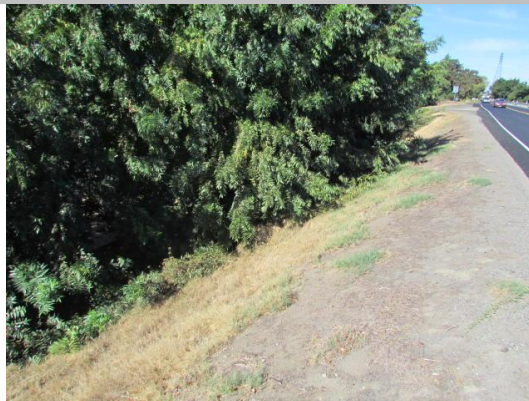
Maintenance Issue Types Only, Levee Inspection Report By Mile - Spring 2017

Brannan Andrus Levee Maintenance District

Waterway	Bank	Unit Miles	Inspection Start/End	Inspector
Unit No. 02 Sacramento River	Left	11.54	03/20/2017 03/20/2017	Richard Willoughby

LM Start	3.96	Rating **	U	Issue No.	102
LM End	3.96	Issue Type +	Ma	Location *	LS
Category	Earthen Levee			GPS Latitude/Longitude	
				Start	End
Item	Trim / Thin Trees			38.164246 °	38.164246 °
				-121.623272 °	-121.623272 °
DWR ID	DWR_NA0002_02_s _ 2014_102				
Comment Code					
T1 : Trim trees to at least five feet above ground level.					
Inspector Comment					
Untrimmed tree blocking landward slope and toe.					

Photo 1 of 1 : SP_2017_NA0002_63_102_20170314_00069.jpg



Looking west at dense trees on landward slope and toe.

LM Start	4.13	Rating **	M	Issue No.	85
LM End	4.13	Issue Type +	Ma	Location *	WS
Category	Earthen Levee			GPS Latitude/Longitude	
				Start	End
Item	Encroachments			38.165098 °	38.165098 °
				-121.626133 °	-121.626133 °
DWR ID	DWR_NA0002_02_s _ 2017_85				
Comment Code					
PR : Prunings					
Inspector Comment					

No Photos

LM Start	4.26	Rating **	M	Issue No.	86
LM End	4.26	Issue Type +	Ma	Location *	LS
Category	Earthen Levee			GPS Latitude/Longitude	
				Start	End
Item	Encroachments			38.165972 °	38.165972 °
				-121.628220 °	-121.628220 °
DWR ID	DWR_NA0002_02_s _ 2017_86				
Comment Code					
PR : Prunings					
Inspector Comment					
Pruning pile should be discarded.					

No Photos

* Location		** Rating		+ Issue Type	
LS : Land Side	N/A : Not Applicable	A : Acceptable	N : Not Inspected/Rated	Ma : Maintenance Deficiency	
WS : Water Side		M : Minimally Acceptable	C : Corrected	Ob : Design & System Obsolescence	
CR : Crown		U : Unacceptable	A/W : Acceptable but Monitor & Maintain	En : Enforcement	

**Flood Control Project Maintenance
Levee Inspections**

Maintenance Issue Types Only, Levee Inspection Report By Mile - Spring 2017

Brannan Andrus Levee Maintenance District

Waterway	Bank	Unit Miles	Inspection Start/End	Inspector
Unit No. 02 Sacramento River	Left	11.54	03/20/2017 03/20/2017	Richard Willoughby

LM Start	4.70	Rating **	M	Issue No.	87
LM End	4.70	Issue Type +	Ma	Location *	LS
Category	Earthen Levee			GPS Latitude/Longitude	
				Start	End
Item	Trim / Thin Trees			38.168342 °	38.168342 °
				-121.635645 °	-121.635645 °
DWR ID	DWR_NA0002_02_s_2017_87				
Comment Code					
T2 : Thin trees to allow visibility of the ground and room to flood fight.					
Inspector Comment					

No Photos

LM Start	4.70	Rating **	U	Issue No.	123
LM End	4.72	Issue Type +	Ma	Location *	WS
Category	Earthen Levee			GPS Latitude/Longitude	
				Start	End
Item	Vegetation			38.168348 °	38.168456 °
				-121.635726 °	-121.636125 °
DWR ID	DWR_NA0002_02_f_2016_123				
Comment Code					
V2 : Remove the wild growth other than native grasses from the levee slopes.					
Inspector Comment					
Dense grapevines on waterward slope.					

Photo 1 of 1 : SP_2017_NA0002_63_123_20170314_00092.jpg



Looking west at dense vines on waterward slope and toe.

* Location LS : Land Side N/A : Not Applicable WS : Water Side CR : Crown		** Rating A : Acceptable N : Not Inspected/Rated M : Minimally Acceptable C : Corrected U : Unacceptable A/W : Acceptable but Monitor & Maintain		+ Issue Type Ma : Maintenance Deficiency Ob : Design & System Obsolescence En : Enforcement
--	--	---	--	---

**Flood Control Project Maintenance
Levee Inspections**

Maintenance Issue Types Only, Levee Inspection Report By Mile - Spring 2017

Brannan Andrus Levee Maintenance District

Waterway	Bank	Unit Miles	Inspection Start/End	Inspector
Unit No. 02 Sacramento River	Left	11.54	03/20/2017 03/20/2017	Richard Willoughby

LM Start	4.92	Rating **	M	Issue No.	88
LM End	4.92	Issue Type +	Ma	Location *	LS
Category	Earthen Levee			GPS Latitude/Longitude	
				Start	End
Item	Encroachments			38.169262 °	38.169262 °
				-121.639497 °	-121.639497 °
DWR ID	DWR_NA0002_02_s_2017_88				
Comment Code					
TR : Tree or limb					
Inspector Comment					
Remove dead tree on landward slope.					

Photo 1 of 1 : SP_2017_NA0002_63_88_20170324_00187.jpg



Looking east at dead tree on landward slope and toe.

LM Start	5.16	Rating **	U	Issue No.	95
LM End	5.16	Issue Type +	Ma	Location *	LS
Category	Earthen Levee			GPS Latitude/Longitude	
				Start	End
Item	Trim / Thin Trees			38.171318 °	38.171318 °
				-121.643001 °	-121.643001 °
DWR ID	DWR_NA0002_02_f_2015_95				
Comment Code					
T1 : Trim trees to at least five feet above ground level.					
Inspector Comment					

Photo 1 of 1 : SP_2017_NA0002_63_95_20170314_00061.jpg



Looking west at untrimmed trees on landward slope.

LM Start	5.23	Rating **	U	Issue No.	9
LM End	5.42	Issue Type +	Ma	Location *	WS
Category	Earthen Levee			GPS Latitude/Longitude	
				Start	End
Item	Trim / Thin Trees			38.171942 °	38.171800 °
				-121.643975 °	-121.647447 °
DWR ID	DWR_NA0002_02_s_2012_9				
Comment Code					
T2 : Thin trees to allow visibility of the ground and room to flood fight.					
Inspector Comment					

Photo 1 of 3 : SP_2017_NA0002_63_9_20170314_00010.jpg



Looking northeast at dense trees on waterside slope and toe.

* Location
LS : Land Side N/A : Not Applicable
WS : Water Side
CR : Crown

** Rating
A : Acceptable N : Not Inspected/Rated
M : Minimally Acceptable C : Corrected
U : Unacceptable A/W : Acceptable but Monitor & Maintain

+ Issue Type
Ma : Maintenance Deficiency
Ob : Design & System Obsolescence
En : Enforcement

**Flood Control Project Maintenance
Levee Inspections**

Maintenance Issue Types Only, Levee Inspection Report By Mile - Spring 2017

Brannan Andrus Levee Maintenance District

Waterway	Bank	Unit Miles	Inspection Start/End	Inspector
Unit No. 02 Sacramento River	Left	11.54	03/20/2017 03/20/2017	Richard Willoughby

LM Start	5.23	Rating **	U	Issue No.	9 (cont)	
LM End	5.42	Issue Type +	Ma	Location *	WS	
Category	Earthen Levee			GPS Latitude/Longitude		
				Start		End
Item	Trim / Thin Trees			38.171942°		38.171800°
				-121.643975°		-121.647447°
DWR ID	DWR_NA0002_02_s_2012_9					
Comment Code						
T2 : Thin trees to allow visibility of the ground and room to flood fight.						
Inspector Comment						

Photo 2 of 3 : SP_2017_NA0002_63_9_20170314_00011.jpg



Looking east at dense trees on waterward shoulder and slope.

LM Start	5.23	Rating **	U	Issue No.	9 (cont)
LM End	5.42	Issue Type +	Ma	Location *	WS

Photo 3 of 3 : SP_2017_NA0002_63_9_20170314_00012.jpg



Looking north at dense trees on waterward should and slope.

* Location LS : Land Side N/A : Not Applicable WS : Water Side CR : Crown		** Rating A : Acceptable M : Minimally Acceptable U : Unacceptable N : Not Inspected/Rated C : Corrected A/W : Acceptable but Monitor & Maintain		+ Issue Type Ma : Maintenance Deficiency Ob : Design & System Obsolescence En : Enforcement
--	--	---	--	---

**Flood Control Project Maintenance
Levee Inspections**

Maintenance Issue Types Only, Levee Inspection Report By Mile - Spring 2017

Brannan Andrus Levee Maintenance District

Waterway	Bank	Unit Miles	Inspection Start/End	Inspector
Unit No. 02 Sacramento River	Left	11.54	03/20/2017 03/20/2017	Richard Willoughby

LM Start	5.41	Rating **	M	Issue No.	148
LM End	5.41	Issue Type +	Ma	Location *	WS
Category	Supplemental			GPS Latitude/Longitude	
				Start	End
Item	DWR UCIP LMA Responsibility			38.171824 °	38.171824 °
				-121.647265 °	-121.647265 °
DWR ID					

Comment Code

Inspector Comment

FS_ID:12776
DS_ID:21910
EP_NO: 7089A
Repair Type: Non-Urgent
Crossing Status: Found
UCIP Comments: Hole at LS toe over pipe possible sign of leakage.
FIELD_STRUCT_DESC: 7-inch pipe through levee 13.0 feet below crown. Pump in pump house on the landward side. 1.5-inch galvanized steel electrical conduit at same location. 4'X6' concrete distribution box off LS toe next to pumphouse. Originally included in the 1959 O&M manual.
FS Date: 5/2/2013

LM Start	5.41	Rating **	M	Issue No.	148 (cont)
LM End	5.41	Issue Type +	Ma	Location *	WS

Photo 1 of 3 : UCIP_SP_2017_12776_20754.jpg



Pipe and electrical conduit on WS slope.

Photo 2 of 3 : UCIP_SP_2017_12776_20753.jpg



Pump on pier at WS toe.

* Location LS : Land Side N/A : Not Applicable WS : Water Side CR : Crown		** Rating A : Acceptable M : Minimally Acceptable U : Unacceptable		N : Not Inspected/Rated C : Corrected A/W : Acceptable but Monitor & Maintain		+ Issue Type Ma : Maintenance Deficiency Ob : Design & System Obsolescence En : Enforcement	
--	--	--	--	---	--	---	--

**Flood Control Project Maintenance
Levee Inspections**

Maintenance Issue Types Only, Levee Inspection Report By Mile - Spring 2017

Brannan Andrus Levee Maintenance District

Waterway	Bank	Unit Miles	Inspection Start/End	Inspector
Unit No. 02 Sacramento River	Left	11.54	03/20/2017 03/20/2017	Richard Willoughby

LM Start	5.41	Rating **	M	Issue No.	148 (cont)	
LM End	5.41	Issue Type +	Ma	Location *	WS	
Category	Supplemental			GPS Latitude/Longitude		
				Start	End	
Item	DWR UCIP LMA Responsibility			38.171824 °	38.171824 °	
				-121.647265 °	-121.647265 °	
DWR ID						
Comment Code						
Inspector Comment						
FS_ID:12776						
DS_ID:21910						
EP_NO: 7089A						
Repair Type: Non-Urgent						
Crossing Status: Found						
UCIP Comments: Hole at LS toe over pipe possible sign of leakage.						
FIELD_STRUCT_DESC: 7-inch pipe through levee 13.0 feet below crown. Pump in pump house on the landward side. 1.5-inch galvanized steel electrical conduit at same location. 4'X6' concrete distribution box off LS toe next to pumphouse. Originally included in the 1959 O&M manual.						
FS Date: 5/2/2013						

Photo 3 of 3 : UCIP_SP_2017_12776_20752.jpg



Pipe under pier.

LM Start	5.58	Rating **	M	Issue No.	10
LM End	5.62	Issue Type +	Ma	Location *	WS
Category	Earthen Levee			GPS Latitude/Longitude	
				Start	End
Item	Trim / Thin Trees			38.172019 °	38.172238 °
				-121.650327 °	-121.651163 °
DWR ID	DWR_NA0002_02_s_2012_10				
Comment Code					
T1 : Trim trees to at least five feet above ground level.					
Inspector Comment					

No Photos

* Location LS : Land Side N/A : Not Applicable WS : Water Side CR : Crown	** Rating A : Acceptable M : Minimally Acceptable U : Unacceptable	N : Not Inspected/Rated C : Corrected A/W : Acceptable but Monitor & Maintain	+ Issue Type Ma : Maintenance Deficiency Ob : Design & System Obsolescence En : Enforcement
--	--	---	---

**Flood Control Project Maintenance
Levee Inspections**

Maintenance Issue Types Only, Levee Inspection Report By Mile - Spring 2017

Brannan Andrus Levee Maintenance District

Waterway	Bank	Unit Miles	Inspection Start/End	Inspector
Unit No. 02 Sacramento River	Left	11.54	03/20/2017 03/20/2017	Richard Willoughby

LM Start	5.65	Rating **	U	Issue No.	11
LM End	5.69	Issue Type +	Ma	Location *	WS
Category	Earthen Levee			GPS Latitude/Longitude	
				Start	End
Item	Vegetation			38.172308 °	38.172497 °
				-121.651552 °	-121.652243 °
DWR ID	DWR_NA0002_02_s_2012_11				
Comment Code					
V2 : Remove the wild growth other than native grasses from the levee slopes.					
Inspector Comment					
Bamboo on waterward slope.					

LM Start	5.65	Rating **	U	Issue No.	11 (cont)
LM End	5.69	Issue Type +	Ma	Location *	WS

Photo 1 of 2 : SP_2017_NA0002_63_11_20170314_00013.jpg



Looking northwest at bambao on waterward slope. (Fall 2016)

Photo 2 of 2 : SP_2017_NA0002_63_11_20170314_00014.jpg



Looking west at bamboo on waterward slope. (Spring 2016)

LM Start	5.66	Rating **	M	Issue No.	36
LM End	5.69	Issue Type +	Ma	Location *	LS
Category	Earthen Levee			GPS Latitude/Longitude	
				Start	End
Item	Trim / Thin Trees			38.172388 °	38.172512 °
				-121.651892 °	-121.652322 °
DWR ID	DWR_NA0002_02_s_2012_36				
Comment Code					
T1 : Trim trees to at least five feet above ground level.					
Inspector Comment					

No Photos

* Location		** Rating		+ Issue Type	
LS : Land Side	N/A : Not Applicable	A : Acceptable	N : Not Inspected/Rated	Ma : Maintenance Deficiency	
WS : Water Side		M : Minimally Acceptable	C : Corrected	Ob : Design & System Obsolescence	
CR : Crown		U : Unacceptable	A/W : Acceptable but Monitor & Maintain	En : Enforcement	

**Flood Control Project Maintenance
Levee Inspections**

Maintenance Issue Types Only, Levee Inspection Report By Mile - Spring 2017

Brannan Andrus Levee Maintenance District

Waterway	Bank	Unit Miles	Inspection Start/End	Inspector
Unit No. 02 Sacramento River	Left	11.54	03/20/2017 03/20/2017	Richard Willoughby

LM Start	5.77	Rating **	M	Issue No.	149
LM End	5.77	Issue Type +	Ma	Location *	LS
Category	Supplemental			GPS Latitude/Longitude	
				Start	End
Item	DWR UCIP LMA Responsibility			38.172940 °	38.172940 °
				-121.653700 °	-121.653700 °
DWR ID					
Comment Code					
Inspector Comment					
FS_ID:12778 DS_ID:21912 EP_NO: N/A Repair Type: Non-Urgent Crossing Status: Found UCIP Comments: Pipe abandoned. Erosion on WS slope at location where pipe should be. FIELD_STRUCT_DESC: *ABANDONED* 12-inch pipe through levee 13.0 feet below crown. Pump and gate valve in pumphouse at landside toe. 1.5-inch electrical conduit along pipe at same location. 42-inch concrete stand pipe at LS toe. Concrete standpipe at landside toe. FS Date: 5/2/2013					

Photo 1 of 3 : UCIP_SP_2017_12778_20762.jpg



Conduit at WS toe.

LM Start	5.77	Rating **	M	Issue No.	149 (cont)
LM End	5.77	Issue Type +	Ma	Location *	LS

Photo 2 of 3 : UCIP_SP_2017_12778_20761.jpg



Erosion along pipe alignment at WS slope.

* Location LS : Land Side N/A : Not Applicable WS : Water Side CR : Crown	** Rating A : Acceptable M : Minimally Acceptable U : Unacceptable N : Not Inspected/Rated C : Corrected A/W : Acceptable but Monitor & Maintain	+ Issue Type Ma : Maintenance Deficiency Ob : Design & System Obsolescence En : Enforcement
--	---	---

**Flood Control Project Maintenance
Levee Inspections**

Maintenance Issue Types Only, Levee Inspection Report By Mile - Spring 2017

Brannan Andrus Levee Maintenance District

Waterway	Bank	Unit Miles	Inspection Start/End	Inspector
Unit No. 02 Sacramento River	Left	11.54	03/20/2017 03/20/2017	Richard Willoughby

LM Start	5.77	Rating **	M	Issue No.	149 (cont)
LM End	5.77	Issue Type +	Ma	Location *	LS
Category	Supplemental			GPS Latitude/Longitude	
				Start	End
Item	DWR UCIP LMA Responsibility			38.172940 °	38.172940 °
				-121.653700 °	-121.653700 °
DWR ID					
Comment Code					
Inspector Comment					
FS_ID:12778 DS_ID:21912 EP_NO: N/A Repair Type: Non-Urgent Crossing Status: Found UCIP Comments: Pipe abandoned. Erosion on WS slope at location where pipe should be. FIELD_STRUCT_DESC: *ABANDONED* 12-inch pipe through levee 13.0 feet below crown. Pump and gate valve in pumphouse at landside toe. 1.5-inch electrical conduit along pipe at same location. 42-inch concrete stand pipe at LS toe. Concrete standpipe at landside toe. FS Date: 5/2/2013					

Photo 3 of 3 : UCIP_SP_2017_12778_20760.jpg



Concrete standpipe and pump on LS toe.

LM Start	6.12	Rating **	M	Issue No.	103
LM End	6.12	Issue Type +	Ma	Location *	LS
Category	Earthen Levee			GPS Latitude/Longitude	
				Start	End
Item	Vegetation			38.174670 °	38.174670 °
				-121.659592 °	-121.659592 °
DWR ID	DWR_NA0002_02_f_2015_103				
Comment Code					
V4 : Elderberries are blocking visibility and flood fight capability.					
Inspector Comment					

No Photos

* Location LS : Land Side N/A : Not Applicable WS : Water Side CR : Crown	** Rating A : Acceptable M : Minimally Acceptable U : Unacceptable	N : Not Inspected/Rated C : Corrected A/W : Acceptable but Monitor & Maintain	+ Issue Type Ma : Maintenance Deficiency Ob : Design & System Obsolescence En : Enforcement
--	--	---	---

**Flood Control Project Maintenance
Levee Inspections**

Maintenance Issue Types Only, Levee Inspection Report By Mile - Spring 2017

Brannan Andrus Levee Maintenance District

Waterway	Bank	Unit Miles	Inspection Start/End	Inspector
Unit No. 02 Sacramento River	Left	11.54	03/20/2017 03/20/2017	Richard Willoughby

LM Start	6.23	Rating **	U	Issue No.	110
LM End	6.23	Issue Type +	Ma	Location *	LS
Category	Earthen Levee			GPS Latitude/Longitude	
				Start	End
Item	Trim / Thin Trees			38.174182 °	38.174182 °
				-121.661633 °	-121.661633 °
DWR ID	DWR_NA0002_02_s _ 2015_110				
Comment Code					
T1 : Trim trees to at least five feet above ground level.					
Inspector Comment					
Broken tree limbs on landward slope.					

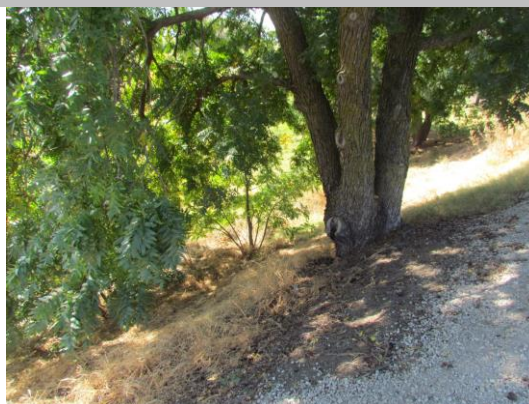
Photo 1 of 1 : SP_2017_NA0002_63_110_20170324_00189.jpg



Looking northeast at fallen tree on landward slope and toe.

LM Start	6.36	Rating **	U	Issue No.	14
LM End	6.36	Issue Type +	Ma	Location *	LS
Category	Earthen Levee			GPS Latitude/Longitude	
				Start	End
Item	Trim / Thin Trees			38.173406 °	38.173406 °
				-121.663815 °	-121.663815 °
DWR ID	DWR_NA0002_02_s _ 2012_14				
Comment Code					
T1 : Trim trees to at least five feet above ground level.					
Inspector Comment					

Photo 1 of 2 : SP_2017_NA0002_63_14_20170314_00017.jpg



LM Start	6.36	Rating **	U	Issue No.	14 (cont)
LM End	6.36	Issue Type +	Ma	Location *	LS

Photo 2 of 2 : SP_2017_NA0002_63_14_20170314_00018.jpg



Looking east at untrimmed tree on landward slope.

* Location LS : Land Side N/A : Not Applicable WS : Water Side CR : Crown		** Rating A : Acceptable M : Minimally Acceptable U : Unacceptable		N : Not Inspected/Rated C : Corrected A/W : Acceptable but Monitor & Maintain		+ Issue Type Ma : Maintenance Deficiency Ob : Design & System Obsolescence En : Enforcement	
--	--	--	--	---	--	---	--

**Flood Control Project Maintenance
Levee Inspections**

Maintenance Issue Types Only, Levee Inspection Report By Mile - Spring 2017

Brannan Andrus Levee Maintenance District

Waterway	Bank	Unit Miles	Inspection Start/End	Inspector
Unit No. 02 Sacramento River	Left	11.54	03/20/2017 03/20/2017	Richard Willoughby

LM Start	6.98	Rating **	M	Issue No.	23
LM End	7.04	Issue Type +	Ma	Location *	WS
Category	Supplemental			GPS Latitude/Longitude	
				Start	End
Item	2015 USACE Erosion Survey, DRAFT			38.166583 °	38.165794 °
				-121.670684 °	-121.671014 °
DWR ID	DWR_NA0002_02_s_2016_23				
Comment Code					
Inspector Comment					
2011 - Large section of bank slumped off. 2015: No observed changes. [2015 Site ID: SAC_13-6_L]					

Photo 1 of 1 : SP_2017_NA0002_63_23_20170314_00026.jpg



USACE 2013 Photo #1

LM Start	7.13	Rating **	U	Issue No.	112
LM End	7.13	Issue Type +	Ma	Location *	LS
Category	Earthen Levee			GPS Latitude/Longitude	
				Start	End
Item	Trim / Thin Trees			38.164465 °	38.164465 °
				-121.671292 °	-121.671292 °
DWR ID	DWR_NA0002_02_f_2015_112				
Comment Code					
T1 : Trim trees to at least five feet above ground level.					
Inspector Comment					

Photo 1 of 1 : SP_2017_NA0002_63_112_20170314_00080.jpg



Looking south at untrimmed trees on landward slope.

LM Start	7.71	Rating **	M	Issue No.	105
LM End	7.71	Issue Type +	Ma	Location *	WS
Category	Earthen Levee			GPS Latitude/Longitude	
				Start	End
Item	Encroachments			38.157841 °	38.157841 °
				-121.677510 °	-121.677510 °
DWR ID	DWR_NA0002_02_f_2014_105				
Comment Code					
TR : Tree or limb					
Inspector Comment					
Tree limbs on waterward shoulder.					

Photo 1 of 1 : SP_2017_NA0002_63_105_20170314_00072.jpg



Looking southwest at tree limbs on waterward shoulder.

* Location
LS : Land Side N/A : Not Applicable
WS : Water Side
CR : Crown

** Rating
A : Acceptable N : Not Inspected/Rated
M : Minimally Acceptable C : Corrected
U : Unacceptable A/W : Acceptable but Monitor & Maintain

+ Issue Type
Ma : Maintenance Deficiency
Ob : Design & System Obsolescence
En : Enforcement

**Flood Control Project Maintenance
Levee Inspections**

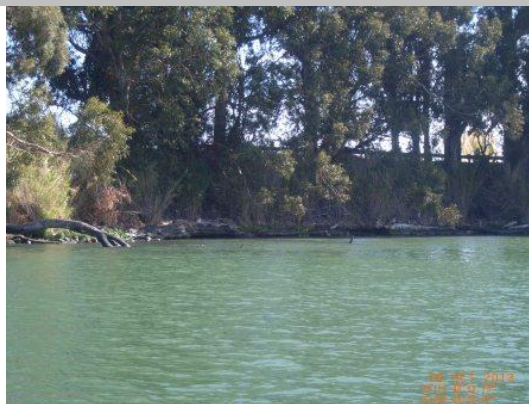
Maintenance Issue Types Only, Levee Inspection Report By Mile - Spring 2017

Brannan Andrus Levee Maintenance District

Waterway	Bank	Unit Miles	Inspection Start/End	Inspector
Unit No. 02 Sacramento River	Left	11.54	03/20/2017 03/20/2017	Richard Willoughby

LM Start	8.20	Rating **	U	Issue No.	17
LM End	8.42	Issue Type +	Ma	Location *	WS
Category	Supplemental			GPS Latitude/Longitude	
				Start	End
Item	2015 USACE Erosion Survey, DRAFT			38.151867 °	38.148711 °
				-121.682201 °	-121.682790 °
DWR ID	DWR_NA0002_02_s_2016_17				
Comment Code					
Inspector Comment					
2010 - Small inlet area behind a man-built spit. Bank is slumping and could possibly be fixed with maintenance. 2011 - Site continues to worsen. 2015: Upgraded to Critical [2015 Site ID: SAC_12-1_L]					

Photo 1 of 1 : SP_2017_NA0002_63_17_20170314_00021.jpg



USACE 2013 Photo #1

LM Start	8.31	Rating **	U	Issue No.	106
LM End	8.31	Issue Type +	Ma	Location *	LS
Category	Earthen Levee			GPS Latitude/Longitude	
				Start	End
Item	Encroachments			38.150208 °	38.150208 °
				-121.682130 °	-121.682130 °
DWR ID	DWR_NA0002_02_s_2017_106				
Comment Code					
TR : Tree or limb					
Inspector Comment					
Several fallen trees and prunings on landward slope. Tree left hole on landward slope.					

Photo 1 of 4 : SP_2017_NA0002_63_106_20170324_00192.jpg



Looking southeast at fallen tree prunings on landward shoulder and slope.

* Location LS : Land Side N/A : Not Applicable WS : Water Side CR : Crown		** Rating A : Acceptable N : Not Inspected/Rated M : Minimally Acceptable C : Corrected U : Unacceptable A/W : Acceptable but Monitor & Maintain		+ Issue Type Ma : Maintenance Deficiency Ob : Design & System Obsolescence En : Enforcement
--	--	---	--	---

**Flood Control Project Maintenance
Levee Inspections**

Maintenance Issue Types Only, Levee Inspection Report By Mile - Spring 2017

Brannan Andrus Levee Maintenance District

Waterway	Bank	Unit Miles	Inspection Start/End	Inspector
Unit No. 02 Sacramento River	Left	11.54	03/20/2017 03/20/2017	Richard Willoughby

LM Start	8.31	Rating **	U	Issue No.	106 (cont)	
LM End	8.31	Issue Type +	Ma	Location *	LS	
Category	Earthen Levee			GPS Latitude/Longitude		
				Start	End	
Item	Encroachments			38.150208 °	38.150208 °	
				-121.682130 °	-121.682130 °	
DWR ID	DWR_NA0002_02_s_2017_106					
Comment Code						
TR : Tree or limb						
Inspector Comment						
Several fallen trees and prunings on landward slope. Tree left hole on landward slope.						

Photo 2 of 4 : SP_2017_NA0002_63_106_20170324_00193.jpg



Looking north at hole on left by fallen tree on landward shoulder and slope.

LM Start	8.31	Rating **	U	Issue No.	106 (cont)
LM End	8.31	Issue Type +	Ma	Location *	LS

Photo 3 of 4 : SP_2017_NA0002_63_106_20170324_00194.jpg



Looking north at fallen tree prunings on landward slope.

LM Start	8.31	Rating **	U	Issue No.	106 (cont)
LM End	8.31	Issue Type +	Ma	Location *	LS

Photo 4 of 4 : SP_2017_NA0002_63_106_20170324_00195.jpg



Looking southeast at second fallen tree prunings on landward shoulder and slope.

* Location		** Rating		+ Issue Type	
LS : Land Side	N/A : Not Applicable	A : Acceptable	N : Not Inspected/Rated	Ma : Maintenance Deficiency	
WS : Water Side		M : Minimally Acceptable	C : Corrected	Ob : Design & System Obsolescence	
CR : Crown		U : Unacceptable	A/W : Acceptable but Monitor & Maintain	En : Enforcement	

**Flood Control Project Maintenance
Levee Inspections**

Maintenance Issue Types Only, Levee Inspection Report By Mile - Spring 2017

Brannan Andrus Levee Maintenance District

Waterway	Bank	Unit Miles	Inspection Start/End	Inspector
Unit No. 02 Sacramento River	Left	11.54	03/20/2017 03/20/2017	Richard Willoughby

LM Start	8.32	Rating **	U	Issue No.	44
LM End	8.68	Issue Type +	Ma	Location *	LS
Category	Earthen Levee			GPS Latitude/Longitude	
				Start	End
Item	Trim / Thin Trees			38.150112 °	38.144977 °
				-121.682305 °	-121.683345 °
DWR ID	DWR_NA0002_02_s _ 2012_44				
Comment Code					
T1 : Trim trees to at least five feet above ground level.					
Inspector Comment					
Dense eucalyptus trees along landside slope.					

Photo 1 of 1 : SP_2017_NA0002_63_44_20170314_00044.jpg



Looking south at untrimmed trees along landward slope.

LM Start	8.65	Rating **	M	Issue No.	48
LM End	8.86	Issue Type +	Ma	Location *	LS
Category	Earthen Levee			GPS Latitude/Longitude	
				Start	End
Item	Trim / Thin Trees			38.145368 °	38.142430 °
				-121.683072 °	-121.683978 °
DWR ID	DWR_NA0002_02_s _ 2013_48				
Comment Code					
T1 : Trim trees to at least five feet above ground level.					
Inspector Comment					

Photo 1 of 2 : SP_2017_NA0002_63_48_20170314_00047.jpg



Looking south at trees on landward slope.

LM Start	8.65	Rating **	M	Issue No.	48 (cont)
LM End	8.66	Issue Type +	Ma	Location *	LS

Photo 2 of 2 : SP_2017_NA0002_63_48_20170314_00048.jpg



Looking north at dense trees on landward slope and toe.

* Location LS : Land Side N/A : Not Applicable WS : Water Side CR : Crown		** Rating A : Acceptable M : Minimally Acceptable U : Unacceptable N : Not Inspected/Rated C : Corrected A/W : Acceptable but Monitor & Maintain		+ Issue Type Ma : Maintenance Deficiency Ob : Design & System Obsolescence En : Enforcement
--	--	---	--	---

**Flood Control Project Maintenance
Levee Inspections**

Maintenance Issue Types Only, Levee Inspection Report By Mile - Spring 2017

Brannan Andrus Levee Maintenance District

Waterway	Bank	Unit Miles	Inspection Start/End	Inspector
Unit No. 02 Sacramento River	Left	11.54	03/20/2017 03/20/2017	Richard Willoughby

LM Start	8.90	Rating **	M	Issue No.	47
LM End	8.90	Issue Type +	Ma	Location *	LS
Category	Earthen Levee			GPS Latitude/Longitude	
				Start	End
Item	Trim / Thin Trees			38.141928 °	38.141928 °
				-121.684308 °	-121.684308 °
DWR ID	DWR_NA0002_02_s _ 2013_47				
Comment Code					
T1 : Trim trees to at least five feet above ground level.					
Inspector Comment					

No Photos

LM Start	8.96	Rating **	U	Issue No.	19
LM End	9.18	Issue Type +	Ma	Location *	WS
Category	Supplemental			GPS Latitude/Longitude	
				Start	End
Item	2015 USACE Erosion Survey, DRAFT			38.141399 °	38.138158 °
				-121.685346 °	-121.686531 °
DWR ID	DWR_NA0002_02_s _ 2016_19				
Comment Code					
Inspector Comment					
2008 - Erosion causing vertical bank at the highway on top of levee. The whole bank along the highway should be repaired. 2009 - Minimal new erosion. 2011 - Bank continues to slowly erode. 2012 - Upgrade to critical, new erosion since lat year and steeper slopes in sections. 2015: Road foundation and cables exposed. Extremely large tree with exposed roots looks likely to fail and take out a significant portion of the levee. [2015 Site ID: SAC_11-2_L]					

Photo 1 of 1 : SP_2017_NA0002_63_19_20170314_00022.jpg



USACE 2013 Photo #1

* Location LS : Land Side N/A : Not Applicable WS : Water Side CR : Crown		** Rating A : Acceptable N : Not Inspected/Rated M : Minimally Acceptable C : Corrected U : Unacceptable A/W : Acceptable but Monitor & Maintain		+ Issue Type Ma : Maintenance Deficiency Ob : Design & System Obsolescence En : Enforcement
--	--	---	--	---

**Flood Control Project Maintenance
Levee Inspections**

Maintenance Issue Types Only, Levee Inspection Report By Mile - Spring 2017

Brannan Andrus Levee Maintenance District

Waterway	Bank	Unit Miles	Inspection Start/End	Inspector
Unit No. 02 Sacramento River	Left	11.54	03/20/2017 03/20/2017	Richard Willoughby

LM Start	9.15	Rating **	U	Issue No.	115
LM End	9.15	Issue Type +	Ma	Location *	WS
Category	Earthen Levee			GPS Latitude/Longitude	
				Start	End
Item	Erosion / Bank Caving			38.138510 °	38.138510 °
				-121.686124 °	-121.686124 °
DWR ID	DWR_NA0002_02_s_2016_115				
Comment Code					
E1 : Note and monitor erosion site.					
Inspector Comment					
Erosion on waterward shoulder along highway appears to be foot erosion.					

Photo 1 of 4 : SP_2017_NA0002_63_115_20170314_00082.jpg



Looking west at foot erosion on waterward slope. (Fall 2016)

LM Start	9.15	Rating **	U	Issue No.	115 (cont)
LM End	9.15	Issue Type +	Ma	Location *	WS

Photo 2 of 4 : SP_2017_NA0002_63_115_20170314_00083.jpg



Looking west at foot erosion on waterward slope.

LM Start	9.15	Rating **	U	Issue No.	115 (cont)
LM End	9.15	Issue Type +	Ma	Location *	WS

Photo 3 of 4 : SP_2017_NA0002_63_115_20170314_00084.jpg



Looking south at erosion on waterward shoulder.

* Location LS : Land Side N/A : Not Applicable WS : Water Side CR : Crown		** Rating A : Acceptable M : Minimally Acceptable U : Unacceptable N : Not Inspected/Rated C : Corrected A/W : Acceptable but Monitor & Maintain		+ Issue Type Ma : Maintenance Deficiency Ob : Design & System Obsolescence En : Enforcement	
---	--	--	--	--	--

**Flood Control Project Maintenance
Levee Inspections**

Maintenance Issue Types Only, Levee Inspection Report By Mile - Spring 2017

Brannan Andrus Levee Maintenance District

Waterway	Bank	Unit Miles	Inspection Start/End	Inspector
Unit No. 02 Sacramento River	Left	11.54	03/20/2017 03/20/2017	Richard Willoughby

LM Start	9.15	Rating **	U	Issue No.	115 (cont)	
LM End	9.15	Issue Type +	Ma	Location *	WS	
Category	Earthen Levee			GPS Latitude/Longitude		
				Start	End	
Item	Erosion / Bank Caving			38.138510 °	38.138510 °	
				-121.686124 °	-121.686124 °	
DWR ID	DWR_NA0002_02_s_2016_115					
Comment Code						
E1 : Note and monitor erosion site.						
Inspector Comment						
Erosion on waterward shoulder along highway appears to be foot erosion.						

Photo 4 of 4 : SP_2017_NA0002_63_115_20170314_00085.jpg



Looking north at foot erosion at waterward shoulder and slope.

LM Start	9.36	Rating **	M	Issue No.	160
LM End	9.36	Issue Type +	Ma	Location *	WS
Category	Supplemental			GPS Latitude/Longitude	
				Start	End
Item	DWR UCIP LMA Responsibility			38.135584 °	38.135584 °
				-121.686108 °	-121.686108 °
DWR ID					
Comment Code					
Inspector Comment					
FS_ID:40528 DS_ID:21931 EP_NO: 16011 Repair Type: Non-Urgent Crossing Status: Found UCIP Comments: Annular space between pipes should be grouted. IF abandoned, these pipes should be abandoned properly. FIELD_STRUCT_DESC: 18-inch corrugated metal conduit pipe through the levee 4.5 feet below the crown. Inactive 12-inch pipe sleeved through 18-inch. Both ends open. Siphon breaker and air valve in 24-inch CMP riser on LS shoulder. 9'X5' concrete box with slide gate off LS toe. Originally included in the 1959 O&M manual. FS Date: 5/3/2013					

Photo 1 of 3 : UCIP_SP_2017_40528_21002.jpg



Pipe on WS slope.

* Location LS : Land Side N/A : Not Applicable WS : Water Side CR : Crown		** Rating A : Acceptable N : Not Inspected/Rated M : Minimally Acceptable C : Corrected U : Unacceptable A/W : Acceptable but Monitor & Maintain		+ Issue Type Ma : Maintenance Deficiency Ob : Design & System Obsolescence En : Enforcement
--	--	---	--	---

**Flood Control Project Maintenance
Levee Inspections**

Maintenance Issue Types Only, Levee Inspection Report By Mile - Spring 2017

Brannan Andrus Levee Maintenance District

Waterway	Bank	Unit Miles	Inspection Start/End	Inspector
Unit No. 02 Sacramento River	Left	11.54	03/20/2017 03/20/2017	Richard Willoughby

LM Start	9.36	Rating **	M	Issue No.	160 (cont)
LM End	9.36	Issue Type +	Ma	Location *	WS
Category	Supplemental			GPS Latitude/Longitude	
				Start	End
Item	DWR UCIP LMA Responsibility			38.135584 °	38.135584 °
				-121.686108 °	-121.686108 °
DWR ID					

Comment Code

Inspector Comment

FS_ID:40528
DS_ID:21931
EP_NO: 16011
Repair Type: Non-Urgent
Crossing Status: Found
UCIP Comments: Annular space between pipes should be grouted. IF abandoned, these pipes should be abandoned properly.
FIELD_STRUCT_DESC: 18-inch corrugated metal conduit pipe through the levee 4.5 feet below the crown. Inactive 12-inch pipe sleeved through 18-inch. Both ends open. Siphon breaker and air valve in 24-inch CMP riser on LS shoulder. 9'X5' concrete box with slide gate off LS toe. Originally included in the 1959 O&M manual.
FS Date: 5/3/2013

LM Start	9.36	Rating **	M	Issue No.	160 (cont)
LM End	9.36	Issue Type +	Ma	Location *	WS

Photo 2 of 3 : UCIP_SP_2017_40528_21001.jpg



18-inch CMP with 12-inch irrigation pipe sleeved through it.

Photo 3 of 3 : UCIP_SP_2017_40528_21000.jpg



Standpipe and concrete box at LS.

* Location LS : Land Side N/A : Not Applicable WS : Water Side CR : Crown		** Rating A : Acceptable N : Not Inspected/Rated M : Minimally Acceptable C : Corrected U : Unacceptable A/W : Acceptable but Monitor & Maintain		+ Issue Type Ma : Maintenance Deficiency Ob : Design & System Obsolescence En : Enforcement
--	--	---	--	---

**Flood Control Project Maintenance
Levee Inspections**

Maintenance Issue Types Only, Levee Inspection Report By Mile - Spring 2017

Brannan Andrus Levee Maintenance District

Waterway	Bank	Unit Miles	Inspection Start/End	Inspector
Unit No. 02 Sacramento River	Left	11.54	03/20/2017 03/20/2017	Richard Willoughby

LM Start	9.60	Rating **	U	Issue No.	16
LM End	9.71	Issue Type +	Ma	Location *	WS
Category	Earthen Levee			GPS Latitude/Longitude	
				Start	End
Item	Trim / Thin Trees			38.132095 °	38.130537 °
				-121.686243 °	-121.686737 °
DWR ID	DWR_NA0002_02_s_2012_16				
Comment Code					
T3 : Trim and thin trees to allow visibility of the ground and room to flood fight.					
Inspector Comment					
Untrimmed trees within twenty foot zone on waterward slope.					

LM Start	9.60	Rating **	U	Issue No.	16 (cont)
LM End	9.71	Issue Type +	Ma	Location *	WS

Photo 1 of 2 : SP_2017_NA0002_63_16_20170314_00019.jpg



Looking south at dense vegetation (trees) on waterward slope.

Photo 2 of 2 : SP_2017_NA0002_63_16_20170314_00020.jpg



Looking north at dense vegetation (trees) on waterward slope.

* Location LS : Land Side N/A : Not Applicable WS : Water Side CR : Crown		** Rating A : Acceptable M : Minimally Acceptable U : Unacceptable N : Not Inspected/Rated C : Corrected A/W : Acceptable but Monitor & Maintain		+ Issue Type Ma : Maintenance Deficiency Ob : Design & System Obsolescence En : Enforcement	
---	--	--	--	--	--

**Flood Control Project Maintenance
Levee Inspections**

Maintenance Issue Types Only, Levee Inspection Report By Mile - Spring 2017

Brannan Andrus Levee Maintenance District

Waterway	Bank	Unit Miles	Inspection Start/End	Inspector
Unit No. 02 Sacramento River	Left	11.54	03/20/2017 03/20/2017	Richard Willoughby

LM Start	9.78	Rating **	M	Issue No.	21
LM End	9.93	Issue Type +	Ma	Location *	WS
Category	Supplemental			GPS Latitude/Longitude	
Item				Start	End
				2015 USACE Erosion Survey, DRAFT	38.129722 °
			-121.687468 °	-121.688646 °	
DWR ID	DWR_NA0002_02_s_2016_21				
Comment Code					
Inspector Comment					
2004 - Wave wash pockets approximately 100 ft long with new full bank rock between the pockets. 2005 - Spot repairs, but toe is still eroding in several places. 2006 - Low vertical bank along roadway. 2007 - A PL 84-99 repair was constructed, it cover the majority of the site with the exception of the upstream 150 to 200 ft and the downstream 250 ft, therefore it is being kept in the inventory. 2009 - Minimal new erosion. 2010 - Outboard berm looks good, but the banks are still very steep. 2011 - While the outboard berm is protecting against wave wash, bank still has slumping issues. 2015: No observed changes. [2015 Site ID: SAC_10-8_L]					

Photo 1 of 1 : SP_2017_NA0002_63_21_20170314_00024.jpg



USACE 2013 Photo #1

LM Start	10.26	Rating **	U	Issue No.	107
LM End	10.48	Issue Type +	Ma	Location *	WS
Category	Earthen Levee			GPS Latitude/Longitude	
				Start	End
Item	Vegetation			38.123119 °	38.120256 °
				-121.690488 °	-121.692298 °
DWR ID	DWR_NA0002_02_f_2014_107				
Comment Code					
V2 : Remove the wild growth other than native grasses from the levee slopes.					
Inspector Comment					
Bamboo on waterward slope.					

Photo 1 of 2 : SP_2017_NA0002_63_107_20170314_00073.jpg



Looking south at bamboo and other vegetation on waterward slope. (Fall 2016)

* Location LS : Land Side N/A : Not Applicable WS : Water Side CR : Crown		** Rating A : Acceptable M : Minimally Acceptable U : Unacceptable N : Not Inspected/Rated C : Corrected A/W : Acceptable but Monitor & Maintain		+ Issue Type Ma : Maintenance Deficiency Ob : Design & System Obsolescence En : Enforcement	
---	--	--	--	--	--

**Flood Control Project Maintenance
Levee Inspections**

Maintenance Issue Types Only, Levee Inspection Report By Mile - Spring 2017

Brannan Andrus Levee Maintenance District

Waterway	Bank	Unit Miles	Inspection Start/End	Inspector
Unit No. 02 Sacramento River	Left	11.54	03/20/2017 03/20/2017	Richard Willoughby

LM Start	10.26	Rating **	U	Issue No.	107 (cont)	
LM End	10.48	Issue Type +	Ma	Location *	WS	
Category	Earthen Levee			GPS Latitude/Longitude		
				Start		End
Item	Vegetation			38.123119 °		38.120256 °
				-121.690488 °		-121.692298 °
DWR ID	DWR_NA0002_02_f_2014_107					
Comment Code						
V2 : Remove the wild growth other than native grasses from the levee slopes.						
Inspector Comment						
Bamboo on waterward slope.						

Photo 2 of 2 : SP_2017_NA0002_63_107_20170314_00074.jpg



Looking south at dense vegetation on waterward slope. (Fall 2015)

LM Start	10.28	Rating **	M	Issue No.	113
LM End	10.28	Issue Type +	Ma	Location *	WS
Category	Earthen Levee			GPS Latitude/Longitude	
				Start	End
Item	Erosion / Bank Caving			38.122904 °	38.122904 °
				-121.690819 °	-121.690819 °
DWR ID	DWR_NA0002_02_f_2015_113				
Comment Code					
E2 : Schedule repair of erosion site prior to the next inspection.					
Inspector Comment					
Bank erosion on waterward shoulder greater than 3" depth but less than 3' in length.					

Photo 1 of 1 : SP_2017_NA0002_63_113_20170314_00081.jpg



Looking at erosion on waterward shoulder.

* Location LS : Land Side N/A : Not Applicable WS : Water Side CR : Crown		** Rating A : Acceptable N : Not Inspected/Rated M : Minimally Acceptable C : Corrected U : Unacceptable A/W : Acceptable but Monitor & Maintain		+ Issue Type Ma : Maintenance Deficiency Ob : Design & System Obsolescence En : Enforcement
--	--	---	--	---