

**Flood Control Project Maintenance
Levee Inspections**

Maintenance Issue Types Only, Levee Inspection Report By Mile - Spring 2016

Brannan Andrus Levee Maintenance District

Waterway	Bank	Unit Miles	Inspection Start/End	Inspector
Unit No. 01 Georgiana Slough	Right	6.01	03/22/2016 03/22/2016	Richard Willoughby

LM Start		Rating **	A	Issue No.	27
LM End		Issue Type +	Ma	Location *	N/A
Category	Earthen Levee		GPS Latitude/Longitude		
			Start	End	
Item	Flood Preparedness & Training			°	°
				°	°
DWR ID	DWR_NA0002_01_s _ 2012_27				
Comment Code					
Inspector Comment					
LMA is prepared to respond to a flood emergency.					

No Photos

LM Start		Rating **	A	Issue No.	32
LM End		Issue Type +	Ma	Location *	N/A
Category	Earthen Levee		GPS Latitude/Longitude		
			Start	End	
Item	Operations & Maintenance Manuals			°	°
				°	°
DWR ID	DWR_NA0002_01_s _ 2013_32				
Comment Code					
Inspector Comment					
The LMA maintains a copy of the O&M manual on file at district office.					

No Photos

LM Start		Rating **	A	Issue No.	33
LM End		Issue Type +	Ma	Location *	N/A
Category	Earthen Levee		GPS Latitude/Longitude		
			Start	End	
Item	Emergency Supplies & Equipment			°	°
				°	°
DWR ID	DWR_NA0002_01_s _ 2013_33				
Comment Code					
Inspector Comment					
LMA maintains an adequate amount of flood fight supplies and equipment for flood response.					

No Photos

* Location LS : Land Side N/A : Not Applicable WS : Water Side CR : Crown	** Rating A : Acceptable M : Minimally Acceptable U : Unacceptable	N : Not Inspected/Rated C : Corrected A/W : Acceptable but Monitor & Maintain	+ Issue Type Ma : Maintenance Deficiency Ob : Design & System Obsolescence En : Enforcement
--	--	---	---

**Flood Control Project Maintenance
Levee Inspections**

Maintenance Issue Types Only, Levee Inspection Report By Mile - Spring 2016

Brannan Andrus Levee Maintenance District

Waterway	Bank	Unit Miles	Inspection Start/End	Inspector
Unit No. 01 Georgiana Slough	Right	6.01	03/22/2016 03/22/2016	Richard Willoughby

LM Start	0.00	Rating **	M	Issue No.	62
LM End	6.01	Issue Type +	Ma	Location *	LS
Category	Earthen Levee			GPS Latitude/Longitude	
				Start	End
Item	Vegetation			38.186448 °	38.129578 °
				-121.562704 °	-121.578600 °
DWR ID	DWR_NA0002_01_s _ 2016_62				
Comment Code					
V1 : Control annual grass and weeds on the levee slopes and easements.					
Inspector Comment					

No Photos

LM Start	0.00	Rating **	M	Issue No.	63
LM End	6.01	Issue Type +	Ma	Location *	WS
Category	Earthen Levee			GPS Latitude/Longitude	
				Start	End
Item	Vegetation			38.186448 °	38.129578 °
				-121.562704 °	-121.578599 °
DWR ID	DWR_NA0002_01_s _ 2016_63				
Comment Code					
V1 : Control annual grass and weeds on the levee slopes and easements.					
Inspector Comment					

No Photos

LM Start	1.56	Rating **	U	Issue No.	25
LM End	1.56	Issue Type +	Ma	Location *	LS
Category	Earthen Levee			GPS Latitude/Longitude	
				Start	End
Item	Trim / Thin Trees			38.172869 °	38.172869 °
				-121.580681 °	-121.580681 °
DWR ID	DWR_NA0002_01_s _ 2012_25				
Comment Code					
T1 : Trim trees to at least five feet above ground level.					
Inspector Comment					
Tree blocking landward toe.					

Photo 1 of 3 : SP_2016_NA0002_62_25_20160308_00024.jpg



Looking northwest at untrimmed tree at landward toe. (Spring 2015)

* Location		** Rating		+ Issue Type	
LS : Land Side	N/A : Not Applicable	A : Acceptable	N : Not Inspected/Rated	Ma : Maintenance Deficiency	
WS : Water Side		M : Minimally Acceptable	C : Corrected	Ob : Design & System Obsolescence	
CR : Crown		U : Unacceptable	A/W : Acceptable but Monitor & Maintain	En : Enforcement	

**Flood Control Project Maintenance
Levee Inspections**

Maintenance Issue Types Only, Levee Inspection Report By Mile - Spring 2016

Brannan Andrus Levee Maintenance District

Waterway	Bank	Unit Miles	Inspection Start/End	Inspector
Unit No. 01 Georgiana Slough	Right	6.01	03/22/2016 03/22/2016	Richard Willoughby

LM Start	1.56	Rating **	U	Issue No.	25 (cont)	
LM End	1.56	Issue Type +	Ma	Location *	LS	
Category	Earthen Levee			GPS Latitude/Longitude		
				Start		End
Item	Trim / Thin Trees			38.172869 °		38.172869 °
				-121.580681 °		-121.580681 °
DWR ID	DWR_NA0002_01_s _ 2012_25					
Comment Code						
T1 : Trim trees to at least five feet above ground level.						
Inspector Comment						
Tree blocking landward toe.						

LM Start	1.56	Rating **	U	Issue No.	25 (cont)
LM End	1.56	Issue Type +	Ma	Location *	LS

Photo 2 of 3 : SP_2016_NA0002_62_25_20160308_00025.jpg



Looking west at untrimmed tree at landward toe. (Spring 2015)

Photo 3 of 3 : SP_2016_NA0002_62_25_20160308_00026.jpg



Looking southwest at an untrimmed tree on landward slope and toe. (Spring 2014)

LM Start	2.20	Rating **	M	Issue No.	26
LM End	2.22	Issue Type +	Ma	Location *	LS
Category	Earthen Levee			GPS Latitude/Longitude	
				Start	End
Item	Vegetation			38.164138 °	38.163797 °
				-121.584078 °	-121.584225 °
DWR ID	DWR_NA0002_01_s _ 2013_26				
Comment Code					
V2 : Remove the wild growth other than native grasses from the levee slopes.					
Inspector Comment					
Control wild growth at landside toe.					

Photo 1 of 2 : SP_2016_NA0002_62_26_20160308_00027.jpg



Looking west at dense vegetation at landward toe.

*** Location**

LS : Land Side N/A : Not Applicable
WS : Water Side
CR : Crown

**** Rating**

A : Acceptable N : Not Inspected/Rated
M : Minimally Acceptable C : Corrected
U : Unacceptable A/W : Acceptable but Monitor & Maintain

+ Issue Type

Ma : Maintenance Deficiency
Ob : Design & System Obsolescence
En : Enforcement

**Flood Control Project Maintenance
Levee Inspections**

Maintenance Issue Types Only, Levee Inspection Report By Mile - Spring 2016

Brannan Andrus Levee Maintenance District

Waterway	Bank	Unit Miles	Inspection Start/End	Inspector
Unit No. 01 Georgiana Slough	Right	6.01	03/22/2016 03/22/2016	Richard Willoughby

LM Start	2.20	Rating **	M	Issue No.	26 (cont)	
LM End	2.22	Issue Type +	Ma	Location *	LS	
Category	Earthen Levee			GPS Latitude/Longitude		
				Start		End
Item	Vegetation			38.164138 °		38.163797 °
				-121.584078 °		-121.584225 °
DWR ID	DWR_NA0002_01_s _ 2013_26					
Comment Code						
V2 : Remove the wild growth other than native grasses from the levee slopes.						
Inspector Comment						
Control wild growth at landside toe.						

Photo 2 of 2 : SP_2016_NA0002_62_26_20160308_00028.jpg



Looking southwest at dense vegetation at landward toe.

LM Start	2.25	Rating **	A/W	Issue No.	6
LM End	2.25	Issue Type +	Ma	Location *	LS
Category	Earthen Levee			GPS Latitude/Longitude	
				Start	End
Item	Trim / Thin Trees			38.163460 °	38.163460 °
				-121.584406 °	-121.584406 °
DWR ID	DWR_NA0002_01_s _ 2012_6				
Comment Code					
T1 : Trim trees to at least five feet above ground level.					
Inspector Comment					

No Photos

LM Start	2.30	Rating **	M	Issue No.	3
LM End	2.30	Issue Type +	Ma	Location *	WS
Category	Earthen Levee			GPS Latitude/Longitude	
				Start	End
Item	Encroachments			38.162773 °	38.162773 °
				-121.584767 °	-121.584767 °
DWR ID	DWR_NA0002_01_s _ 2012_3				
Comment Code					
FW : Firewood					
Inspector Comment					

Photo 1 of 3 : SP_2016_NA0002_62_3_20160308_00003.jpg



Looking east at firewood on waterside shoulder.

* Location		** Rating		+ Issue Type	
LS : Land Side	N/A : Not Applicable	A : Acceptable	N : Not Inspected/Rated	Ma : Maintenance Deficiency	
WS : Water Side		M : Minimally Acceptable	C : Corrected	Ob : Design & System Obsolescence	
CR : Crown		U : Unacceptable	A/W : Acceptable but Monitor & Maintain	En : Enforcement	

**Flood Control Project Maintenance
Levee Inspections**

Maintenance Issue Types Only, Levee Inspection Report By Mile - Spring 2016

Brannan Andrus Levee Maintenance District

Waterway	Bank	Unit Miles	Inspection Start/End	Inspector
Unit No. 01 Georgiana Slough	Right	6.01	03/22/2016 03/22/2016	Richard Willoughby

LM Start	2.30	Rating **	M	Issue No.	3 (cont)	
LM End	2.30	Issue Type +	Ma	Location *	WS	
Category	Earthen Levee			GPS Latitude/Longitude		
				Start		End
Item	Encroachments			38.162773 °		38.162773 °
				-121.584767 °		-121.584767 °
DWR ID	DWR_NA0002_01_s _ 2012_3					
Comment Code						
FW : Firewood						
Inspector Comment						

Photo 2 of 3 : SP_2016_NA0002_62_3_20160308_00004.jpg



Looking southeast at firewood on waterside shoulder.

LM Start	2.30	Rating **	M	Issue No.	3 (cont)
LM End	2.30	Issue Type +	Ma	Location *	WS

Photo 3 of 3 : SP_2016_NA0002_62_3_20160308_00005.jpg



Looking south at firewood on waterside shoulder.

LM Start	2.36	Rating **	M	Issue No.	7
LM End	2.36	Issue Type +	Ma	Location *	LS
Category	Earthen Levee			GPS Latitude/Longitude	
				Start	End
Item	Animal Control			38.162004 °	38.162004 °
				-121.585229 °	-121.585229 °
DWR ID	DWR_NA0002_01_s _ 2012_7				
Comment Code					
A3 : No rodents visible, but rodent burrows visible; need to backfill and compact or grout burrows.					
Inspector Comment					

No Photos

* Location LS : Land Side N/A : Not Applicable WS : Water Side CR : Crown		** Rating A : Acceptable M : Minimally Acceptable U : Unacceptable N : Not Inspected/Rated C : Corrected A/W : Acceptable but Monitor & Maintain		+ Issue Type Ma : Maintenance Deficiency Ob : Design & System Obsolescence En : Enforcement	
--	--	---	--	---	--

**Flood Control Project Maintenance
Levee Inspections**

Maintenance Issue Types Only, Levee Inspection Report By Mile - Spring 2016

Brannan Andrus Levee Maintenance District

Waterway	Bank	Unit Miles	Inspection Start/End	Inspector
Unit No. 01 Georgiana Slough	Right	6.01	03/22/2016 03/22/2016	Richard Willoughby

LM Start	2.40	Rating **	M	Issue No.	8
LM End	2.40	Issue Type +	Ma	Location *	LS
Category	Earthen Levee			GPS Latitude/Longitude	
				Start	End
Item	Encroachments			38.161573 °	38.161573 °
				-121.585720 °	-121.585720 °
DWR ID	DWR_NA0002_01_s _ 2013_8				
Comment Code					
GA : Garbage					
Inspector Comment					

Photo 1 of 1 : SP_2016_NA0002_62_8_20160308_00007.jpg



Looking northeast at garbage at landward toe.

LM Start	2.45	Rating **	U	Issue No.	28
LM End	2.49	Issue Type +	Ma	Location *	LS
Category	Earthen Levee			GPS Latitude/Longitude	
				Start	End
Item	Vegetation			38.160805 °	38.160281 °
				-121.585782 °	-121.586007 °
DWR ID	DWR_NA0002_01_s _ 2013_28				
Comment Code					
V2 : Remove the wild growth other than native grasses from the levee slopes.					
Inspector Comment					
Dense vegetation and wild roses on landside slope and toe.					

Photo 1 of 1 : SP_2016_NA0002_62_28_20160308_00029.jpg



Look west at dense vegetation at landward toe.

LM Start	3.00	Rating **	U	Issue No.	55
LM End	3.00	Issue Type +	Ma	Location *	LS
Category	Earthen Levee			GPS Latitude/Longitude	
				Start	End
Item	Vegetation			38.156493 °	38.156493 °
				-121.592481 °	-121.592481 °
DWR ID	DWR_NA0002_01_s _ 2014_55				
Comment Code					
V2 : Remove the wild growth other than native grasses from the levee slopes.					
Inspector Comment					
Dense vegetation on landward toe.					

Photo 1 of 4 : SP_2016_NA0002_62_55_20160323_00102.jpg



Looking northwest at dense vegetation at landward toe. (Spring 2016)

* Location LS : Land Side N/A : Not Applicable WS : Water Side CR : Crown		** Rating A : Acceptable M : Minimally Acceptable U : Unacceptable		N : Not Inspected/Rated C : Corrected A/W : Acceptable but Monitor & Maintain		+ Issue Type Ma : Maintenance Deficiency Ob : Design & System Obsolescence En : Enforcement	
--	--	--	--	---	--	---	--

**Flood Control Project Maintenance
Levee Inspections**

Maintenance Issue Types Only, Levee Inspection Report By Mile - Spring 2016

Brannan Andrus Levee Maintenance District

Waterway	Bank	Unit Miles	Inspection Start/End	Inspector
Unit No. 01 Georgiana Slough	Right	6.01	03/22/2016 03/22/2016	Richard Willoughby

LM Start	3.00	Rating **	U	Issue No.	55 (cont)	
LM End	3.00	Issue Type +	Ma	Location *	LS	
Category	Earthen Levee			GPS Latitude/Longitude		
				Start		End
Item	Vegetation			38.156493 °		38.156493 °
				-121.592481 °		-121.592481 °
DWR ID	DWR_NA0002_01_s _ 2014_55					
Comment Code						
V2 : Remove the wild growth other than native grasses from the levee slopes.						
Inspector Comment						
Dense vegetation on landward toe.						

LM Start	3.00	Rating **	U	Issue No.	55 (cont)
LM End	3.00	Issue Type +	Ma	Location *	LS

Photo 2 of 4 : SP_2016_NA0002_62_55_20160308_00049.jpg



Looking southwest at dense vegetation at landward toe. (Spring 2015)

Photo 3 of 4 : SP_2016_NA0002_62_55_20160308_00050.jpg



Looking north at dense vegetation withing fifteen feet of landward toe.

LM Start	3.00	Rating **	U	Issue No.	55 (cont)
LM End	3.00	Issue Type +	Ma	Location *	LS

Photo 4 of 4 : SP_2016_NA0002_62_55_20160308_00051.jpg



Looking north at dense vegetation within fifteen feet of landward toe.

* Location LS : Land Side N/A : Not Applicable WS : Water Side CR : Crown		** Rating A : Acceptable M : Minimally Acceptable U : Unacceptable		N : Not Inspected/Rated C : Corrected A/W : Acceptable but Monitor & Maintain		+ Issue Type Ma : Maintenance Deficiency Ob : Design & System Obsolescence En : Enforcement	
--	--	--	--	---	--	---	--

**Flood Control Project Maintenance
Levee Inspections**

Maintenance Issue Types Only, Levee Inspection Report By Mile - Spring 2016

Brannan Andrus Levee Maintenance District

Waterway	Bank	Unit Miles	Inspection Start/End	Inspector
Unit No. 01 Georgiana Slough	Right	6.01	03/22/2016 03/22/2016	Richard Willoughby

LM Start	3.37	Rating **	M	Issue No.	5
LM End	3.37	Issue Type +	Ma	Location *	WS
Category	Earthen Levee			GPS Latitude/Longitude	
				Start	End
Item	Vegetation			38.151492 °	38.151492 °
				-121.591942 °	-121.591942 °
DWR ID	DWR_NA0002_01_f_2013_5				
Comment Code					
V2 : Remove the wild growth other than native grasses from the levee slopes.					
Inspector Comment					
Remove cactus from waterward slope.					

Photo 1 of 1 : SP_2016_NA0002_62_5_20160308_00006.jpg



Looking south at cacti on waterward slope near Oxbow Habor.

LM Start	3.46	Rating **	A/W	Issue No.	30
LM End	3.82	Issue Type +	Ma	Location *	WS
Category	Earthen Levee			GPS Latitude/Longitude	
				Start	End
Item	Vegetation			38.151572 °	38.149813 °
				-121.593488 °	-121.598913 °
DWR ID	DWR_NA0002_01_s_2013_30				
Comment Code					
V2 : Remove the wild growth other than native grasses from the levee slopes.					
Inspector Comment					
Willows on waterside slope.					

No Photos

LM Start	3.62	Rating **	A/W	Issue No.	9
LM End	3.62	Issue Type +	Ma	Location *	LS
Category	Earthen Levee			GPS Latitude/Longitude	
				Start	End
Item	Trim / Thin Trees			38.151744 °	38.151744 °
				-121.596425 °	-121.596425 °
DWR ID	DWR_NA0002_01_s_2012_9				
Comment Code					
T1 : Trim trees to at least five feet above ground level.					
Inspector Comment					

No Photos

* Location		** Rating		+ Issue Type	
LS : Land Side	N/A : Not Applicable	A : Acceptable	N : Not Inspected/Rated	Ma : Maintenance Deficiency	
WS : Water Side		M : Minimally Acceptable	C : Corrected	Ob : Design & System Obsolescence	
CR : Crown		U : Unacceptable	A/W : Acceptable but Monitor & Maintain	En : Enforcement	

**Flood Control Project Maintenance
Levee Inspections**

Maintenance Issue Types Only, Levee Inspection Report By Mile - Spring 2016

Brannan Andrus Levee Maintenance District

Waterway	Bank	Unit Miles	Inspection Start/End	Inspector
Unit No. 01 Georgiana Slough	Right	6.01	03/22/2016 03/22/2016	Richard Willoughby

LM Start	3.87	Rating **	M	Issue No.	57
LM End	3.87	Issue Type +	Ma	Location *	WS
Category	Earthen Levee			GPS Latitude/Longitude	
				Start	End
Item	Trim / Thin Trees			38.149217 °	38.149217 °
				-121.599389 °	-121.599389 °
DWR ID	DWR_NA0002_01_f _ 2015_57				
Comment Code					
T1 : Trim trees to at least five feet above ground level.					
Inspector Comment					

No Photos

LM Start	3.93	Rating **	A/W	Issue No.	10
LM End	3.93	Issue Type +	Ma	Location *	WS
Category	Earthen Levee			GPS Latitude/Longitude	
				Start	End
Item	Vegetation			38.148379 °	38.148379 °
				-121.599970 °	-121.599970 °
DWR ID	DWR_NA0002_01_s _ 2012_10				
Comment Code					
V2 : Remove the wild growth other than native grasses from the levee slopes.					
Inspector Comment					

No Photos

LM Start	4.18	Rating **	A/W	Issue No.	12
LM End	4.20	Issue Type +	Ma	Location *	LS
Category	Earthen Levee			GPS Latitude/Longitude	
				Start	End
Item	Trim / Thin Trees			38.145094 °	38.144817 °
				-121.601585 °	-121.601477 °
DWR ID	DWR_NA0002_01_s _ 2012_12				
Comment Code					
T1 : Trim trees to at least five feet above ground level.					
Inspector Comment					

No Photos

* Location LS : Land Side N/A : Not Applicable WS : Water Side CR : Crown		** Rating A : Acceptable N : Not Inspected/Rated M : Minimally Acceptable C : Corrected U : Unacceptable A/W : Acceptable but Monitor & Maintain		+ Issue Type Ma : Maintenance Deficiency Ob : Design & System Obsolescence En : Enforcement
--	--	---	--	---

**Flood Control Project Maintenance
Levee Inspections**

Maintenance Issue Types Only, Levee Inspection Report By Mile - Spring 2016

Brannan Andrus Levee Maintenance District

Waterway	Bank	Unit Miles	Inspection Start/End	Inspector
Unit No. 01 Georgiana Slough	Right	6.01	03/22/2016 03/22/2016	Richard Willoughby

LM Start	4.25	Rating **	A/W	Issue No.	13
LM End	4.28	Issue Type +	Ma	Location *	WS
Category	Earthen Levee			GPS Latitude/Longitude	
				Start	End
Item	Trim / Thin Trees			38.144134 °	38.143747 °
				-121.601177 °	-121.600924 °
DWR ID	DWR_NA0002_01_s _ 2012_13				
Comment Code					
T1 : Trim trees to at least five feet above ground level.					
Inspector Comment					

No Photos

LM Start	4.36	Rating **	A/W	Issue No.	21
LM End	4.36	Issue Type +	Ma	Location *	WS
Category	Earthen Levee			GPS Latitude/Longitude	
				Start	End
Item	Trim / Thin Trees			38.142838 °	38.142838 °
				-121.600163 °	-121.600163 °
DWR ID	DWR_NA0002_01_s _ 2012_21				
Comment Code					
T1 : Trim trees to at least five feet above ground level.					
Inspector Comment					

No Photos

LM Start	4.64	Rating **	A/W	Issue No.	49
LM End	4.64	Issue Type +	Ma	Location *	WS
Category	Earthen Levee			GPS Latitude/Longitude	
				Start	End
Item	Trim / Thin Trees			38.139211 °	38.139211 °
				-121.597582 °	-121.597582 °
DWR ID	DWR_NA0002_01_f _ 2015_49				
Comment Code					
T4 : Trim trees over roadway to at least 12 feet above ground level.					
Inspector Comment					

No Photos

* Location		** Rating		+ Issue Type	
LS : Land Side	N/A : Not Applicable	A : Acceptable	N : Not Inspected/Rated	Ma : Maintenance Deficiency	
WS : Water Side		M : Minimally Acceptable	C : Corrected	Ob : Design & System Obsolescence	
CR : Crown		U : Unacceptable	A/W : Acceptable but Monitor & Maintain	En : Enforcement	

**Flood Control Project Maintenance
Levee Inspections**

Maintenance Issue Types Only, Levee Inspection Report By Mile - Spring 2016

Brannan Andrus Levee Maintenance District

Waterway	Bank	Unit Miles	Inspection Start/End	Inspector
Unit No. 01 Georgiana Slough	Right	6.01	03/22/2016 03/22/2016	Richard Willoughby

LM Start	4.97	Rating **	A/W	Issue No.	1
LM End	4.97	Issue Type +	Ma	Location *	LS
Category	Earthen Levee			GPS Latitude/Longitude	
				Start	End
Item	Vegetation			38.135235 °	38.135235 °
				-121.594275 °	-121.594275 °
DWR ID	DWR_NA0002_01_s _ 2015_1				
Comment Code					
V2 : Remove the wild growth other than native grasses from the levee slopes.					
Inspector Comment					
Wild rose on landward slope and toe.					

No Photos

LM Start	4.98	Rating **	A/W	Issue No.	14
LM End	4.98	Issue Type +	Ma	Location *	WS
Category	Earthen Levee			GPS Latitude/Longitude	
				Start	End
Item	Trim / Thin Trees			38.135158 °	38.135158 °
				-121.594198 °	-121.594198 °
DWR ID	DWR_NA0002_01_s _ 2012_14				
Comment Code					
T4 : Trim trees over roadway to at least 12 feet above ground level.					
Inspector Comment					

No Photos

LM Start	5.11	Rating **	A/W	Issue No.	15
LM End	5.11	Issue Type +	Ma	Location *	WS
Category	Earthen Levee			GPS Latitude/Longitude	
				Start	End
Item	Trim / Thin Trees			38.133759 °	38.133759 °
				-121.592598 °	-121.592598 °
DWR ID	DWR_NA0002_01_s _ 2012_15				
Comment Code					
T4 : Trim trees over roadway to at least 12 feet above ground level.					
Inspector Comment					

No Photos

* Location		** Rating		+ Issue Type	
LS : Land Side	N/A : Not Applicable	A : Acceptable	N : Not Inspected/Rated	Ma : Maintenance Deficiency	
WS : Water Side		M : Minimally Acceptable	C : Corrected	Ob : Design & System Obsolescence	
CR : Crown		U : Unacceptable	A/W : Acceptable but Monitor & Maintain	En : Enforcement	

**Flood Control Project Maintenance
Levee Inspections**

Maintenance Issue Types Only, Levee Inspection Report By Mile - Spring 2016

Brannan Andrus Levee Maintenance District

Waterway	Bank	Unit Miles	Inspection Start/End	Inspector
Unit No. 01 Georgiana Slough	Right	6.01	03/22/2016 03/22/2016	Richard Willoughby

LM Start	5.12	Rating **	M	Issue No.	65
LM End	5.12	Issue Type +	Ma	Location *	LS
Category	Earthen Levee			GPS Latitude/Longitude	
				Start	End
Item	Vegetation			38.133695 °	38.133695 °
				-121.592516 °	-121.592516 °
DWR ID	DWR_NA0002_01_s_2016_65				
Comment Code					
V2 : Remove the wild growth other than native grasses from the levee slopes.					
Inspector Comment					
Remove cactus from landward slope.					

Photo 1 of 1 : SP_2016_NA0002_62_65_20160323_00103.jpg



Looking south at cactus on landward slope.

LM Start	5.17	Rating **	A/W	Issue No.	31
LM End	5.17	Issue Type +	Ma	Location *	WS
Category	Earthen Levee			GPS Latitude/Longitude	
				Start	End
Item	Trim / Thin Trees			38.133145 °	38.133145 °
				-121.591895 °	-121.591895 °
DWR ID	DWR_NA0002_01_s_2013_31				
Comment Code					
T4 : Trim trees over roadway to at least 12 feet above ground level.					
Inspector Comment					

No Photos

LM Start	5.29	Rating **	M	Issue No.	47
LM End	5.29	Issue Type +	Ma	Location *	WS
Category	Earthen Levee			GPS Latitude/Longitude	
				Start	End
Item	Encroachments			38.131802 °	38.131802 °
				-121.590465 °	-121.590465 °
DWR ID	DWR_NA0002_01_f_2015_47				
Comment Code					
PR : Prunings					
Inspector Comment					
Prunings piles on waterward berm should be removed or burned.					

Photo 1 of 1 : SP_2016_NA0002_62_47_20160308_00037.jpg



Looking at pruning piles on waterward berm.

* Location		** Rating		+ Issue Type	
LS : Land Side	N/A : Not Applicable	A : Acceptable	N : Not Inspected/Rated	Ma : Maintenance Deficiency	
WS : Water Side		M : Minimally Acceptable	C : Corrected	Ob : Design & System Obsolescence	
CR : Crown		U : Unacceptable	A/W : Acceptable but Monitor & Maintain	En : Enforcement	

**Flood Control Project Maintenance
Levee Inspections**

Maintenance Issue Types Only, Levee Inspection Report By Mile - Spring 2016

Brannan Andrus Levee Maintenance District

Waterway	Bank	Unit Miles	Inspection Start/End	Inspector
Unit No. 01 Georgiana Slough	Right	6.01	03/22/2016 03/22/2016	Richard Willoughby

LM Start	5.33	Rating **	M	Issue No.	2
LM End	5.33	Issue Type +	Ma	Location *	WS
Category	Earthen Levee			GPS Latitude/Longitude	
				Start	End
Item	Trim / Thin Trees			38.131327 °	38.131327 °
				-121.589980 °	-121.589980 °
DWR ID	DWR_NA0002_01_s _ 2012_2				
Comment Code					
T1 : Trim trees to at least five feet above ground level.					
Inspector Comment					

Photo 1 of 1 : SP_2016_NA0002_62_2_20160308_00002.jpg



Looking at untrimmed trees on waterward slope.

LM Start	5.42	Rating **	M	Issue No.	54
LM End	5.42	Issue Type +	Ma	Location *	LS
Category	Earthen Levee			GPS Latitude/Longitude	
				Start	End
Item	Trim / Thin Trees			38.130335 °	38.130335 °
				-121.588920 °	-121.588920 °
DWR ID	DWR_NA0002_01_s _ 2014_54				
Comment Code					
T1 : Trim trees to at least five feet above ground level.					
Inspector Comment					

Photo 1 of 1 : SP_2016_NA0002_62_54_20160308_00048.jpg



Looking at dense trees at landward toe.

LM Start	5.43	Rating **	U	Issue No.	23
LM End	5.54	Issue Type +	Ma	Location *	LS
Category	Earthen Levee			GPS Latitude/Longitude	
				Start	End
Item	Vegetation			38.130253 °	38.129451 °
				-121.588822 °	-121.587062 °
DWR ID	DWR_NA0002_01_s _ 2012_23				
Comment Code					
V2 : Remove the wild growth other than native grasses from the levee slopes.					
Inspector Comment					
Control vegetation at landside toe.					

Photo 1 of 6 : SP_2016_NA0002_62_23_20160323_00105.jpg



Looking south at vegetation at landward toe. (Spring 2016)

* Location LS : Land Side N/A : Not Applicable WS : Water Side CR : Crown		** Rating A : Acceptable M : Minimally Acceptable U : Unacceptable		N : Not Inspected/Rated C : Corrected A/W : Acceptable but Monitor & Maintain		+ Issue Type Ma : Maintenance Deficiency Ob : Design & System Obsolescence En : Enforcement	
--	--	--	--	---	--	---	--

**Flood Control Project Maintenance
Levee Inspections**

Maintenance Issue Types Only, Levee Inspection Report By Mile - Spring 2016

Brannan Andrus Levee Maintenance District

Waterway	Bank	Unit Miles	Inspection Start/End	Inspector
Unit No. 01 Georgiana Slough	Right	6.01	03/22/2016 03/22/2016	Richard Willoughby

LM Start	5.43	Rating **	U	Issue No.	23 (cont)	
LM End	5.54	Issue Type +	Ma	Location *	LS	
Category	Earthen Levee			GPS Latitude/Longitude		
				Start		End
Item	Vegetation			38.130253 °		38.129451 °
				-121.588822 °		-121.587062 °
DWR ID	DWR_NA0002_01_s _ 2012_23					
Comment Code						
V2 : Remove the wild growth other than native grasses from the levee slopes.						
Inspector Comment						
Control vegetation at landside toe.						

LM Start	5.43	Rating **	U	Issue No.	23 (cont)
LM End	5.54	Issue Type +	Ma	Location *	LS

Photo 2 of 6 : SP_2016_NA0002_62_23_20160308_00018.jpg



Looking west at dense vegetation at landward toe.

Photo 3 of 6 : SP_2016_NA0002_62_23_20160308_00019.jpg



Looking east at dense vegetation at landward toe.

LM Start	5.43	Rating **	U	Issue No.	23 (cont)
LM End	5.54	Issue Type +	Ma	Location *	LS

Photo 4 of 6 : SP_2016_NA0002_62_23_20160308_00020.jpg



Looking east at dense vegetation on landward toe.

* Location LS : Land Side N/A : Not Applicable WS : Water Side CR : Crown		** Rating A : Acceptable N : Not Inspected/Rated M : Minimally Acceptable C : Corrected U : Unacceptable A/W : Acceptable but Monitor & Maintain		+ Issue Type Ma : Maintenance Deficiency Ob : Design & System Obsolescence En : Enforcement
--	--	---	--	---

**Flood Control Project Maintenance
Levee Inspections**

Maintenance Issue Types Only, Levee Inspection Report By Mile - Spring 2016

Brannan Andrus Levee Maintenance District

Waterway	Bank	Unit Miles	Inspection Start/End	Inspector
Unit No. 01 Georgiana Slough	Right	6.01	03/22/2016 03/22/2016	Richard Willoughby

LM Start	5.43	Rating **	U	Issue No.	23 (cont)	
LM End	5.54	Issue Type +	Ma	Location *	LS	
Category	Earthen Levee			GPS Latitude/Longitude		
				Start		End
Item	Vegetation			38.130253 °		38.129451 °
				-121.588822 °		-121.587062 °
DWR ID	DWR_NA0002_01_s _ 2012_23					
Comment Code						
V2 : Remove the wild growth other than native grasses from the levee slopes.						
Inspector Comment						
Control vegetation at landside toe.						

LM Start	5.43	Rating **	U	Issue No.	23 (cont)
LM End	5.54	Issue Type +	Ma	Location *	LS

Photo 5 of 6 : SP_2016_NA0002_62_23_20160308_00021.jpg



Looking south at dense berry vines and trees on the landward slope and toe.

Photo 6 of 6 : SP_2016_NA0002_62_23_20160308_00022.jpg



Looking south at trees, berry vines, and wild rose on landside toe.

LM Start	5.64	Rating **	A/W	Issue No.	18
LM End	5.67	Issue Type +	Ma	Location *	WS
Category	Earthen Levee			GPS Latitude/Longitude	
				Start	End
Item	Vegetation			38.129240 °	38.129252 °
				-121.585328 °	-121.584723 °
DWR ID	DWR_NA0002_01_s _ 2012_18				
Comment Code					
V2 : Remove the wild growth other than native grasses from the levee slopes.					
Inspector Comment					

No Photos

* Location		** Rating		+ Issue Type	
LS : Land Side	N/A : Not Applicable	A : Acceptable	N : Not Inspected/Rated	Ma : Maintenance Deficiency	
WS : Water Side		M : Minimally Acceptable	C : Corrected	Ob : Design & System Obsolescence	
CR : Crown		U : Unacceptable	A/W : Acceptable but Monitor & Maintain	En : Enforcement	

**Flood Control Project Maintenance
Levee Inspections**

Maintenance Issue Types Only, Levee Inspection Report By Mile - Spring 2016

Brannan Andrus Levee Maintenance District

Waterway	Bank	Unit Miles	Inspection Start/End	Inspector
Unit No. 01 Georgiana Slough	Right	6.01	03/22/2016 03/22/2016	Richard Willoughby

LM Start	5.65	Rating **	M	Issue No.	64
LM End	5.65	Issue Type +	Ma	Location *	LS
Category	Earthen Levee			GPS Latitude/Longitude	
				Start	End
Item	Encroachments			38.129243 °	38.129243 °
				-121.585098 °	-121.585098 °
DWR ID	DWR_NA0002_01_s _ 2016_64				
Comment Code					
PR : Prunings					
Inspector Comment					
Prunings on landward slope.					

Photo 1 of 1 : SP_2016_NA0002_62_64_20160323_00106.jpg



Looking southwest at prunings at landward toe and berm.

LM Start	5.70	Rating **	A/W	Issue No.	19
LM End	5.70	Issue Type +	Ma	Location *	WS
Category	Earthen Levee			GPS Latitude/Longitude	
				Start	End
Item	Vegetation			38.129307 °	38.129307 °
				-121.584253 °	-121.584253 °
DWR ID	DWR_NA0002_01_s _ 2012_19				
Comment Code					
V2 : Remove the wild growth other than native grasses from the levee slopes.					
Inspector Comment					

No Photos

LM Start	5.75	Rating **	A/W	Issue No.	34
LM End	5.82	Issue Type +	Ma	Location *	WS
Category	Earthen Levee			GPS Latitude/Longitude	
				Start	End
Item	Vegetation			38.129462 °	38.129608 °
				-121.583337 °	-121.582085 °
DWR ID	DWR_NA0002_01_f _ 2013_34				
Comment Code					
V2 : Remove the wild growth other than native grasses from the levee slopes.					
Inspector Comment					

No Photos

* Location LS : Land Side N/A : Not Applicable WS : Water Side CR : Crown		** Rating A : Acceptable M : Minimally Acceptable U : Unacceptable		N : Not Inspected/Rated C : Corrected A/W : Acceptable but Monitor & Maintain		+ Issue Type Ma : Maintenance Deficiency Ob : Design & System Obsolescence En : Enforcement	
---	--	---	--	---	--	--	--

**Flood Control Project Maintenance
Levee Inspections**

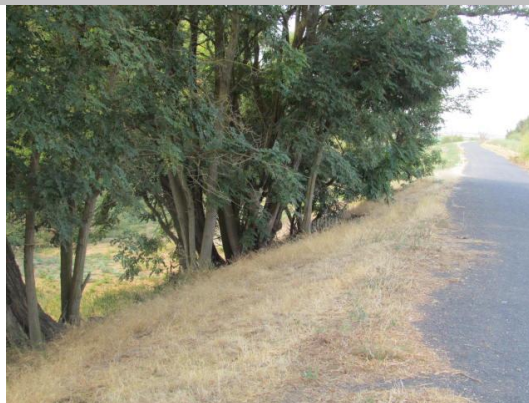
Maintenance Issue Types Only, Levee Inspection Report By Mile - Spring 2016

Brannan Andrus Levee Maintenance District

Waterway	Bank	Unit Miles	Inspection Start/End	Inspector
Unit No. 01 Georgiana Slough	Right	6.01	03/22/2016 03/22/2016	Richard Willoughby

LM Start	5.78	Rating **	M	Issue No.	17
LM End	5.81	Issue Type +	Ma	Location *	LS
Category	Earthen Levee			GPS Latitude/Longitude	
				Start	End
Item	Trim / Thin Trees			38.129537 °	38.129599 °
				-121.582760 °	-121.582155 °
DWR ID	DWR_NA0002_01_s_2012_17				
Comment Code					
T1 : Trim trees to at least five feet above ground level.					
Inspector Comment					
Trim trees for visibility.					

Photo 1 of 1 : SP_2016_NA0002_62_17_20160308_00014.jpg



Looking at dense trees on landward slope and toe.

LM Start	5.88	Rating **	M	Issue No.	51
LM End	5.88	Issue Type +	Ma	Location *	LS
Category	Earthen Levee			GPS Latitude/Longitude	
				Start	End
Item	Trim / Thin Trees			38.129722 °	38.129722 °
				-121.580823 °	-121.580823 °
DWR ID	DWR_NA0002_01_f_2014_51				
Comment Code					
T4 : Trim trees over roadway to at least 12 feet above ground level.					
Inspector Comment					
Tree should be trimmed back from hanging over levee crown.					

Photo 1 of 1 : SP_2016_NA0002_62_51_20160308_00041.jpg



Looking at tree overhanging levee crown.

* Location LS : Land Side N/A : Not Applicable WS : Water Side CR : Crown		** Rating A : Acceptable N : Not Inspected/Rated M : Minimally Acceptable C : Corrected U : Unacceptable A/W : Acceptable but Monitor & Maintain		+ Issue Type Ma : Maintenance Deficiency Ob : Design & System Obsolescence En : Enforcement
--	--	---	--	---

**Flood Control Project Maintenance
Levee Inspections**

Maintenance Issue Types Only, Levee Inspection Report By Mile - Spring 2016

Brannan Andrus Levee Maintenance District

Waterway	Bank	Unit Miles	Inspection Start/End	Inspector
Unit No. 02 Sacramento River	Left	11.54	03/21/2016 03/22/2016	Richard Willoughby

LM Start	0.00	Rating **	M	Issue No.	108
LM End	11.12	Issue Type +	Ma	Location *	WS
Category	Earthen Levee			GPS Latitude/Longitude	
				Start	End
Item	Vegetation			38.191879 °	38.112113 °
				-121.567724 °	-121.698050 °
DWR ID	DWR_NA0002_02_s _ 2016_108				
Comment Code					
V1 : Control annual grass and weeds on the levee slopes and easements.					
Inspector Comment					

No Photos

LM Start	0.00	Rating **	M	Issue No.	90
LM End	11.12	Issue Type +	Ma	Location *	LS
Category	Earthen Levee			GPS Latitude/Longitude	
				Start	End
Item	Vegetation			38.191878 °	38.112113 °
				-121.567724 °	-121.698051 °
DWR ID	DWR_NA0002_02_s _ 2016_90				
Comment Code					
V1 : Control annual grass and weeds on the levee slopes and easements.					
Inspector Comment					

No Photos

LM Start	0.49	Rating **	M	Issue No.	40
LM End	0.49	Issue Type +	Ma	Location *	LS
Category	Earthen Levee			GPS Latitude/Longitude	
				Start	End
Item	Vegetation			38.188871 °	38.188871 °
				-121.575775 °	-121.575775 °
DWR ID	DWR_NA0002_02_f _ 2013_40				
Comment Code					
V2 : Remove the wild growth other than native grasses from the levee slopes.					
Inspector Comment					
Berryvines at landward toe.					

Photo 1 of 3 : SP_2016_NA0002_63_40_20160308_00037.jpg



Looking southeast at berryvines at landward toe.

* Location LS : Land Side N/A : Not Applicable WS : Water Side CR : Crown		** Rating A : Acceptable M : Minimally Acceptable U : Unacceptable N : Not Inspected/Rated C : Corrected A/W : Acceptable but Monitor & Maintain		+ Issue Type Ma : Maintenance Deficiency Ob : Design & System Obsolescence En : Enforcement	
---	--	--	--	--	--

**Flood Control Project Maintenance
Levee Inspections**

Maintenance Issue Types Only, Levee Inspection Report By Mile - Spring 2016

Brannan Andrus Levee Maintenance District

Waterway	Bank	Unit Miles	Inspection Start/End	Inspector
Unit No. 02 Sacramento River	Left	11.54	03/21/2016 03/22/2016	Richard Willoughby

LM Start	0.49	Rating **	M	Issue No.	40 (cont)	
LM End	0.49	Issue Type +	Ma	Location *	LS	
Category	Earthen Levee			GPS Latitude/Longitude		
				Start		End
Item	Vegetation			38.188871 °		38.188871 °
				-121.575775 °		-121.575775 °
DWR ID	DWR_NA0002_02_f_2013_40					
Comment Code						
V2 : Remove the wild growth other than native grasses from the levee slopes.						
Inspector Comment						
Berryvines at landward toe.						

LM Start	0.49	Rating **	M	Issue No.	40 (cont)
LM End	0.49	Issue Type +	Ma	Location *	LS

Photo 2 of 3 : SP_2016_NA0002_63_40_20160308_00038.jpg



Looking east at berryvines at landward toe.

Photo 3 of 3 : SP_2016_NA0002_63_40_20160308_00039.jpg



Looking northeast at berryvines at landward toe.

LM Start	0.66	Rating **	M	Issue No.	1
LM End	0.66	Issue Type +	Ma	Location *	LS
Category	Earthen Levee			GPS Latitude/Longitude	
				Start	End
Item	Trim / Thin Trees			38.187672 °	38.187672 °
				-121.578496 °	-121.578496 °
DWR ID	DWR_NA0002_02_s_2012_1				
Comment Code					
T1 : Trim trees to at least five feet above ground level.					
Inspector Comment					

No Photos

* Location		** Rating		+ Issue Type	
LS : Land Side	N/A : Not Applicable	A : Acceptable	N : Not Inspected/Rated	Ma : Maintenance Deficiency	
WS : Water Side		M : Minimally Acceptable	C : Corrected	Ob : Design & System Obsolescence	
CR : Crown		U : Unacceptable	A/W : Acceptable but Monitor & Maintain	En : Enforcement	

**Flood Control Project Maintenance
Levee Inspections**

Maintenance Issue Types Only, Levee Inspection Report By Mile - Spring 2016

Brannan Andrus Levee Maintenance District

Waterway	Bank	Unit Miles	Inspection Start/End	Inspector
Unit No. 02 Sacramento River	Left	11.54	03/21/2016 03/22/2016	Richard Willoughby

LM Start	0.79	Rating **	U	Issue No.	2	
LM End	0.84	Issue Type +	Ma	Location *	WS	
Category	Earthen Levee			GPS Latitude/Longitude		
				Start		End
Item	Trim / Thin Trees			38.186535 °		38.186103 °
				-121.580395 °		-121.581127 °
DWR ID	DWR_NA0002_02_s_2012_2					
Comment Code						
T2 : Thin trees to allow visibility of the ground and room to flood fight.						
Inspector Comment						
Untrimmed trees within twenty foot zone on waterward slope.						

Photo 1 of 1 : SP_2016_NA0002_63_2_20160308_00001.jpg



Looking south at dense willows and trees on waterward slope.

LM Start	1.07	Rating **	M	Issue No.	91
LM End	1.07	Issue Type +	Ma	Location *	WS
Category	Earthen Levee			GPS Latitude/Longitude	
				Start	End
Item	Encroachments			38.183586 °	38.183586 °
				-121.584010 °	-121.584010 °
DWR ID	DWR_NA0002_02_f_2015_91				
Comment Code					
TR : Tree or limb					
Inspector Comment					
Downed tree branches on waterward slope and berm.					

Photo 1 of 2 : SP_2016_NA0002_63_91_20160308_00057.jpg



Looking south west at fallen tree on waterward slope and berm.

LM Start	1.07	Rating **	M	Issue No.	91 (cont)
LM End	1.07	Issue Type +	Ma	Location *	WS

Photo 2 of 2 : SP_2016_NA0002_63_91_20160308_00058.jpg



Looking west at fallen tree on waterward slope and berm.

* Location
LS : Land Side N/A : Not Applicable
WS : Water Side
CR : Crown

** Rating
A : Acceptable
M : Minimally Acceptable
U : Unacceptable
N : Not Inspected/Rated
C : Corrected
A/W : Acceptable but Monitor & Maintain

+ Issue Type
Ma : Maintenance Deficiency
Ob : Design & System Obsolescence
En : Enforcement

**Flood Control Project Maintenance
Levee Inspections**

Maintenance Issue Types Only, Levee Inspection Report By Mile - Spring 2016

Brannan Andrus Levee Maintenance District

Waterway	Bank	Unit Miles	Inspection Start/End	Inspector
Unit No. 02 Sacramento River	Left	11.54	03/21/2016 03/22/2016	Richard Willoughby

LM Start	1.40	Rating **	M	Issue No.	96
LM End	1.40	Issue Type +	Ma	Location *	LS
Category	Earthen Levee			GPS Latitude/Longitude	
				Start	End
Item	Encroachments			38.179543 °	38.179543 °
				-121.587226 °	-121.587226 °
DWR ID	DWR_NA0002_02_s _ 2015_96				
Comment Code					
TR : Tree or limb					
Inspector Comment					
Broken tree branch on landward toe.					

Photo 1 of 1 : SP_2016_NA0002_63_96_20160308_00063.jpg



Looking east at broken tree limb at landward toe.

LM Start	1.45	Rating **	U	Issue No.	27
LM End	1.47	Issue Type +	Ma	Location *	LS
Category	Earthen Levee			GPS Latitude/Longitude	
				Start	End
Item	Trim / Thin Trees			38.178950 °	38.178950 °
				-121.587717 °	-121.587717 °
DWR ID	DWR_NA0002_02_s _ 2012_27				
Comment Code					
T1 : Trim trees to at least five feet above ground level.					
Inspector Comment					
Dense vegetation should be trimmed back fifteen feet from landward toe.					

Photo 1 of 4 : SP_2016_NA0002_63_27_20160323_00169.jpg



Looking east at dense vegetation at landward toe.

LM Start	1.45	Rating **	U	Issue No.	27 (cont)
LM End	1.47	Issue Type +	Ma	Location *	LS

Photo 2 of 4 : SP_2016_NA0002_63_27_20160323_00170.jpg



Looking east at dense vegetation at landward toe.

* Location LS : Land Side N/A : Not Applicable WS : Water Side CR : Crown		** Rating A : Acceptable M : Minimally Acceptable U : Unacceptable		N : Not Inspected/Rated C : Corrected A/W : Acceptable but Monitor & Maintain		+ Issue Type Ma : Maintenance Deficiency Ob : Design & System Obsolescence En : Enforcement	
--	--	--	--	---	--	---	--

**Flood Control Project Maintenance
Levee Inspections**

Maintenance Issue Types Only, Levee Inspection Report By Mile - Spring 2016

Brannan Andrus Levee Maintenance District

Waterway	Bank	Unit Miles	Inspection Start/End	Inspector
Unit No. 02 Sacramento River	Left	11.54	03/21/2016 03/22/2016	Richard Willoughby

LM Start	1.45	Rating **	U	Issue No.	27 (cont)	
LM End	1.47	Issue Type +	Ma	Location *	LS	
Category	Earthen Levee			GPS Latitude/Longitude		
				Start		End
Item	Trim / Thin Trees			38.178950 °		38.178950 °
				-121.587717 °		-121.587717 °
DWR ID	DWR_NA0002_02_s _ 2012_27					
Comment Code						
T1 : Trim trees to at least five feet above ground level.						
Inspector Comment						
Dense vegetation should be trimmed back fifteen feet from landward toe.						

LM Start	1.45	Rating **	U	Issue No.	27 (cont)
LM End	1.47	Issue Type +	Ma	Location *	LS

Photo 3 of 4 : SP_2016_NA0002_63_27_20160308_00025.jpg



Looking north at dense vegetation on landward toe.

Photo 4 of 4 : SP_2016_NA0002_63_27_20160308_00026.jpg



Looking southeast at dense trees on landside toe.

LM Start	1.60	Rating **	M	Issue No.	35
LM End	1.62	Issue Type +	Ma	Location *	LS
Category	Earthen Levee			GPS Latitude/Longitude	
				Start	End
Item	Trim / Thin Trees			38.177105 °	38.176837 °
				-121.589058 °	-121.589225 °
DWR ID	DWR_NA0002_02_s _ 2012_35				
Comment Code					
T1 : Trim trees to at least five feet above ground level.					
Inspector Comment					

No Photos

* Location LS : Land Side N/A : Not Applicable WS : Water Side CR : Crown		** Rating A : Acceptable M : Minimally Acceptable U : Unacceptable		N : Not Inspected/Rated C : Corrected A/W : Acceptable but Monitor & Maintain		+ Issue Type Ma : Maintenance Deficiency Ob : Design & System Obsolescence En : Enforcement	
--	--	--	--	---	--	---	--

**Flood Control Project Maintenance
Levee Inspections**

Maintenance Issue Types Only, Levee Inspection Report By Mile - Spring 2016

Brannan Andrus Levee Maintenance District

Waterway	Bank	Unit Miles	Inspection Start/End	Inspector
Unit No. 02 Sacramento River	Left	11.54	03/21/2016 03/22/2016	Richard Willoughby

LM Start	1.65	Rating **	C	Issue No.	3
LM End	1.65	Issue Type +	Ma	Location *	LS
Category	Earthen Levee			GPS Latitude/Longitude	
				Start	End
Item	Encroachments			38.176469 °	38.176469 °
				-121.589533 °	-121.589533 °
DWR ID	DWR_NA0002_02_s_2012_3				
Comment Code					
TR : Tree or limb					
Inspector Comment					

No Photos

LM Start	1.69	Rating **	C	Issue No.	97
LM End	1.69	Issue Type +	Ma	Location *	LS
Category	Earthen Levee			GPS Latitude/Longitude	
				Start	End
Item	Encroachments			38.175957 °	38.175957 °
				-121.589837 °	-121.589837 °
DWR ID	DWR_NA0002_02_f_2014_97				
Comment Code					
TR : Tree or limb					
Inspector Comment					

No Photos

LM Start	1.80	Rating **	U	Issue No.	45
LM End	1.82	Issue Type +	Ma	Location *	LS
Category	Earthen Levee			GPS Latitude/Longitude	
				Start	End
Item	Vegetation			38.174437 °	38.174153 °
				-121.590786 °	-121.590980 °
DWR ID	DWR_NA0002_02_f_2013_45				
Comment Code					
V2 : Remove the wild growth other than native grasses from the levee slopes.					
Inspector Comment					
Dense vegetation on landward slope and toe					

Photo 1 of 2 : SP_2016_NA0002_63_45_20160308_00041.jpg



Looking southeast at dense vegetation on landward slope.

* Location		** Rating		+ Issue Type	
LS : Land Side	N/A : Not Applicable	A : Acceptable	N : Not Inspected/Rated	Ma : Maintenance Deficiency	
WS : Water Side		M : Minimally Acceptable	C : Corrected	Ob : Design & System Obsolescence	
CR : Crown		U : Unacceptable	A/W : Acceptable but Monitor & Maintain	En : Enforcement	

**Flood Control Project Maintenance
Levee Inspections**

Maintenance Issue Types Only, Levee Inspection Report By Mile - Spring 2016

Brannan Andrus Levee Maintenance District

Waterway	Bank	Unit Miles	Inspection Start/End	Inspector
Unit No. 02 Sacramento River	Left	11.54	03/21/2016 03/22/2016	Richard Willoughby

LM Start	1.80	Rating **	U	Issue No.	45 (cont)	
LM End	1.82	Issue Type +	Ma	Location *	LS	
Category	Earthen Levee			GPS Latitude/Longitude		
				Start		End
Item	Vegetation			38.174437 °		38.174153 °
				-121.590786 °		-121.590980 °
DWR ID	DWR_NA0002_02_f_2013_45					
Comment Code						
V2 : Remove the wild growth other than native grasses from the levee slopes.						
Inspector Comment						
Dense vegetation on landward slope and toe						

Photo 2 of 2 : SP_2016_NA0002_63_45_20160308_00042.jpg



Looking north at dense vegetation on landward slope and toe.

LM Start	1.84	Rating **	A/W	Issue No.	4
LM End	1.84	Issue Type +	Ma	Location *	LS
Category	Earthen Levee			GPS Latitude/Longitude	
				Start	End
Item	Trim / Thin Trees			38.173905 °	38.173905 °
				-121.591082 °	-121.591082 °
DWR ID	DWR_NA0002_02_s_2012_4				
Comment Code					
T1 : Trim trees to at least five feet above ground level.					
Inspector Comment					

No Photos

LM Start	2.34	Rating **	U	Issue No.	25
LM End	2.38	Issue Type +	Ma	Location *	LS
Category	Earthen Levee			GPS Latitude/Longitude	
				Start	End
Item	Trim / Thin Trees			38.167627 °	38.167152 °
				-121.595538 °	-121.595997 °
DWR ID	DWR_NA0002_02_s_2012_25				
Comment Code					
T2 : Thin trees to allow visibility of the ground and room to flood fight.					
Inspector Comment					

Photo 1 of 1 : SP_2016_NA0002_63_25_20160308_00023.jpg



Looking southeast at trees at landward shoulder. (Spring 2015)

* Location		** Rating		+ Issue Type	
LS : Land Side	N/A : Not Applicable	A : Acceptable	N : Not Inspected/Rated	Ma : Maintenance Deficiency	
WS : Water Side		M : Minimally Acceptable	C : Corrected	Ob : Design & System Obsolescence	
CR : Crown		U : Unacceptable	A/W : Acceptable but Monitor & Maintain	En : Enforcement	

**Flood Control Project Maintenance
Levee Inspections**

Maintenance Issue Types Only, Levee Inspection Report By Mile - Spring 2016

Brannan Andrus Levee Maintenance District

Waterway	Bank	Unit Miles	Inspection Start/End	Inspector
Unit No. 02 Sacramento River	Left	11.54	03/21/2016 03/22/2016	Richard Willoughby

LM Start	2.42	Rating **	U	Issue No.	99
LM End	2.42	Issue Type +	Ma	Location *	LS
Category	Earthen Levee			GPS Latitude/Longitude	
				Start	End
Item	Vegetation			38.166772 °	38.166772 °
				-121.596667 °	-121.596667 °
DWR ID	DWR_NA0002_02_s _ 2014_99				
Comment Code					
V2 : Remove the wild growth other than native grasses from the levee slopes.					
Inspector Comment					
Dense willows on landward slope.					

LM Start	2.42	Rating **	U	Issue No.	99 (cont)
LM End	2.42	Issue Type +	Ma	Location *	LS

Photo 1 of 2 : SP_2016_NA0002_63_99_20160323_00171.jpg



Looking southwest at vegetation (willows) on landward slope and toe.

Photo 2 of 2 : SP_2016_NA0002_63_99_20160323_00172.jpg



LM Start	2.58	Rating **	M	Issue No.	18
LM End	2.63	Issue Type +	Ma	Location *	WS
Category	Supplemental			GPS Latitude/Longitude	
				Start	End
Item	2015 USACE Erosion Survey, DRAFT			38.165945 °	38.165498 °
				-121.599345 °	-121.600080 °
DWR ID	DWR_NA0002_02_s _ 2016_18				
Comment Code					
Inspector Comment					
2009 - Short reach of vertical bank at the toe. 2010 - Large tree is getting ready to fall in. 2015: Freshly exposed tree roots. [2015 Site ID: SAC_18-1_L]					

No Photos

* Location LS : Land Side N/A : Not Applicable WS : Water Side CR : Crown		** Rating A : Acceptable N : Not Inspected/Rated M : Minimally Acceptable C : Corrected U : Unacceptable A/W : Acceptable but Monitor & Maintain		+ Issue Type Ma : Maintenance Deficiency Ob : Design & System Obsolescence En : Enforcement
--	--	---	--	---

**Flood Control Project Maintenance
Levee Inspections**

Maintenance Issue Types Only, Levee Inspection Report By Mile - Spring 2016

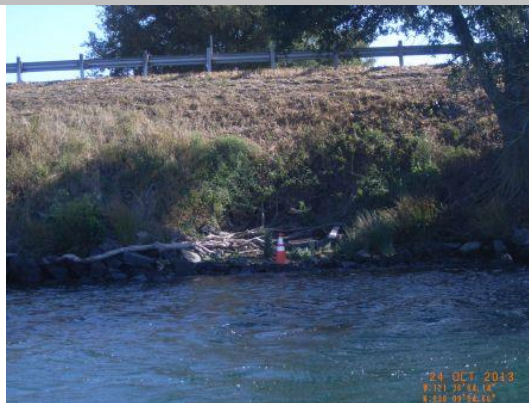
Brannan Andrus Levee Maintenance District

Waterway	Bank	Unit Miles	Inspection Start/End	Inspector
Unit No. 02 Sacramento River	Left	11.54	03/21/2016 03/22/2016	Richard Willoughby

LM Start	2.66	Rating **	M	Issue No.	37
LM End	2.74	Issue Type +	Ma	Location *	WS
Category	Supplemental			GPS Latitude/Longitude	
				Start	End
Item	2015 USACE Erosion Survey, DRAFT			38.165303 °	38.164682 °
				-121.600477 °	-121.601804 °
DWR ID	DWR_NA0002_02_s _ 2016_37				
Comment Code					
Inspector Comment					
2009 - Large scallop from rotational failure. One fallen tree and one large tree with half of its root structure exposed. 2015: Large tree expected to pop out within next couple of years, will take very large chunk of levee out. [2015 Site ID: SAC_18-0_L]					

LM Start	2.66	Rating **	M	Issue No.	37 (cont)
LM End	2.74	Issue Type +	Ma	Location *	WS

Photo 1 of 2 : SP_2016_NA0002_63_37_20160308_00034.jpg



USACE 2013 Photo #1

Photo 2 of 2 : SP_2016_NA0002_63_37_20160308_00035.jpg



USACE 2013 Photo #2

LM Start	3.13	Rating **	M	Issue No.	104
LM End	3.13	Issue Type +	Ma	Location *	WS
Category	Earthen Levee			GPS Latitude/Longitude	
				Start	End
Item	Vegetation			38.162718 °	38.162718 °
				-121.608452 °	-121.608452 °
DWR ID	DWR_NA0002_02_f _ 2014_104				
Comment Code					
V2 : Remove the wild growth other than native grasses from the levee slopes.					
Inspector Comment					
Bamboo reestablishing on waterward slope.					

Photo 1 of 1 : SP_2016_NA0002_63_104_20160308_00070.jpg



Looking southwest at bamboo on waterward slope.

* Location LS : Land Side N/A : Not Applicable WS : Water Side CR : Crown		** Rating A : Acceptable M : Minimally Acceptable U : Unacceptable N : Not Inspected/Rated C : Corrected A/W : Acceptable but Monitor & Maintain		+ Issue Type Ma : Maintenance Deficiency Ob : Design & System Obsolescence En : Enforcement	
--	--	---	--	---	--

**Flood Control Project Maintenance
Levee Inspections**

Maintenance Issue Types Only, Levee Inspection Report By Mile - Spring 2016

Brannan Andrus Levee Maintenance District

Waterway	Bank	Unit Miles	Inspection Start/End	Inspector
Unit No. 02 Sacramento River	Left	11.54	03/21/2016 03/22/2016	Richard Willoughby

LM Start	3.17	Rating **	M	Issue No.	5
LM End	3.17	Issue Type +	Ma	Location *	WS
Category	Earthen Levee			GPS Latitude/Longitude	
				Start	End
Item	Trim / Thin Trees			38.162638 °	38.162638 °
				-121.609068 °	-121.609068 °
DWR ID	DWR_NA0002_02_s _2012_5				
Comment Code					
T4 : Trim trees over roadway to at least 12 feet above ground level.					
Inspector Comment					

Photo 1 of 2 : SP_2016_NA0002_63_5_20160308_00003.jpg



Looking south at overhanging tree on waterward shoulder. (Fall 2014)

LM Start	3.17	Rating **	M	Issue No.	5 (cont)
LM End	3.17	Issue Type +	Ma	Location *	WS

Photo 2 of 2 : SP_2016_NA0002_63_5_20160308_00004.jpg



Looking south at overhanging tree on waterside shoulder.

LM Start	3.20	Rating **	A/W	Issue No.	6
LM End	3.20	Issue Type +	Ma	Location *	WS
Category	Earthen Levee			GPS Latitude/Longitude	
				Start	End
Item	Trim / Thin Trees			38.162643 °	38.162643 °
				-121.609616 °	-121.609616 °
DWR ID	DWR_NA0002_02_s _ 2012_6				
Comment Code					
T4 : Trim trees over roadway to at least 12 feet above ground level.					
Inspector Comment					

No Photos

* Location LS : Land Side N/A : Not Applicable WS : Water Side CR : Crown		** Rating A : Acceptable M : Minimally Acceptable U : Unacceptable		N : Not Inspected/Rated C : Corrected A/W : Acceptable but Monitor & Maintain		+ Issue Type Ma : Maintenance Deficiency Ob : Design & System Obsolescence En : Enforcement	
--	--	--	--	---	--	---	--

**Flood Control Project Maintenance
Levee Inspections**

Maintenance Issue Types Only, Levee Inspection Report By Mile - Spring 2016

Brannan Andrus Levee Maintenance District

Waterway	Bank	Unit Miles	Inspection Start/End	Inspector
Unit No. 02 Sacramento River	Left	11.54	03/21/2016 03/22/2016	Richard Willoughby

LM Start	3.37	Rating **	U	Issue No.	34
LM End	3.56	Issue Type +	Ma	Location *	WS
Category	Supplemental			GPS Latitude/Longitude	
				Start	End
Item	2015 USACE Erosion Survey, DRAFT			38.162641 °	38.162828 °
				-121.612800 °	-121.616263 °
DWR ID	DWR_NA0002_02_s_2016_34				

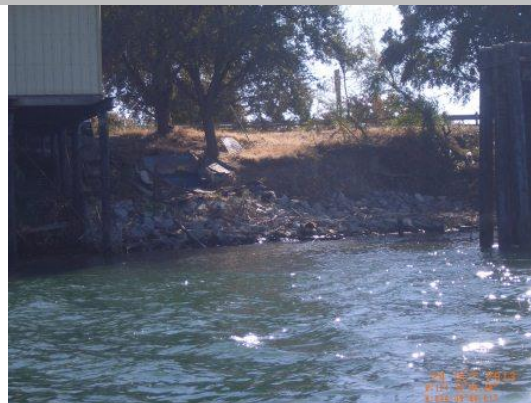
Comment Code

Inspector Comment

2009 - Fluvial erosion, into the levee slope, close to vertical bank with roadway on top. Pilings that were once at the bankline are now 30 ft out. 2010 - Very steep slope with slumps and overturned trees. 2011 - Upgraded to CRITICAL. Sections of vertical slope with highway on top. Heavy vegetation in front of most of the erosion pockets. Structures built into the levee on the upstream end. 2012 - Site continues to worsen. 2013 - Some rock added on the upstream end, but site remains critical. 2015: More rock has been placed in spots along the toe, but it is still insufficient. [2015 Site ID: SAC_17-2_L]

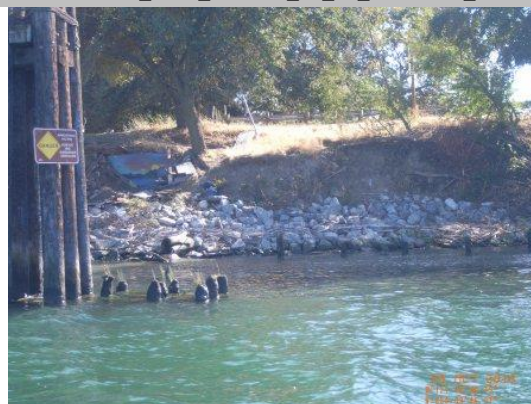
LM Start	3.37	Rating **	U	Issue No.	34 (cont)
LM End	3.56	Issue Type +	Ma	Location *	WS

Photo 1 of 2 : SP_2016_NA0002_63_34_20160308_00032.jpg



USACE 2013 Photo #1

Photo 2 of 2 : SP_2016_NA0002_63_34_20160308_00033.jpg



USACE 2013 Photo #2

* Location LS : Land Side N/A : Not Applicable WS : Water Side CR : Crown		** Rating A : Acceptable M : Minimally Acceptable U : Unacceptable N : Not Inspected/Rated C : Corrected A/W : Acceptable but Monitor & Maintain		+ Issue Type Ma : Maintenance Deficiency Ob : Design & System Obsolescence En : Enforcement
--	--	---	--	---

**Flood Control Project Maintenance
Levee Inspections**

Maintenance Issue Types Only, Levee Inspection Report By Mile - Spring 2016

Brannan Andrus Levee Maintenance District

Waterway	Bank	Unit Miles	Inspection Start/End	Inspector
Unit No. 02 Sacramento River	Left	11.54	03/21/2016 03/22/2016	Richard Willoughby

LM Start	3.39	Rating **	U	Issue No.	100
LM End	3.42	Issue Type +	Ma	Location *	WS
Category	Earthen Levee			GPS Latitude/Longitude	
				Start	End
Item	Vegetation			38.162394 °	38.162432 °
				-121.613146 °	-121.613637 °
DWR ID	DWR_NA0002_02_s _ 2014_100				
Comment Code					
V2 : Remove the wild growth other than native grasses from the levee slopes.					
Inspector Comment					
Bamboo on waterward slope.					

Photo 1 of 1 : SP_2016_NA0002_63_100_20160323_00173.jpg



Looking southwest at vegetation (bamboo) on waterward slope.

LM Start	3.51	Rating **	U	Issue No.	22
LM End	3.58	Issue Type +	Ma	Location *	LS
Category	Earthen Levee			GPS Latitude/Longitude	
				Start	End
Item	Trim / Thin Trees			38.162590 °	38.162728 °
				-121.615345 °	-121.616622 °
DWR ID	DWR_NA0002_02_s _ 2012_22				
Comment Code					
T1 : Trim trees to at least five feet above ground level.					
Inspector Comment					
Untrimmed trees on landward slope and toe.					

Photo 1 of 1 : SP_2016_NA0002_63_22_20160308_00021.jpg



Looking south at dense vegetation (trees) on landward slope and toe.

* Location		** Rating		+ Issue Type	
LS : Land Side	N/A : Not Applicable	A : Acceptable	N : Not Inspected/Rated	Ma : Maintenance Deficiency	
WS : Water Side		M : Minimally Acceptable	C : Corrected	Ob : Design & System Obsolescence	
CR : Crown		U : Unacceptable	A/W : Acceptable but Monitor & Maintain	En : Enforcement	

**Flood Control Project Maintenance
Levee Inspections**

Maintenance Issue Types Only, Levee Inspection Report By Mile - Spring 2016

Brannan Andrus Levee Maintenance District

Waterway	Bank	Unit Miles	Inspection Start/End	Inspector
Unit No. 02 Sacramento River	Left	11.54	03/21/2016 03/22/2016	Richard Willoughby

LM Start	3.62	Rating **	U	Issue No.	20
LM End	3.73	Issue Type +	Ma	Location *	WS
Category	Supplemental			GPS Latitude/Longitude	
				Start	End
Item	2015 USACE Erosion Survey, DRAFT			38.162959 °	38.163334 °
				-121.617323 °	-121.619312 °
DWR ID	DWR_NA0002_02_s _ 2016_20				
Comment Code					
Inspector Comment					
2008 - Overstepped levee section with pocket erosion. Plans for repair currently in the design phase. 2010 - Very steep slope with slumps, longitudinal cracking, and overturned trees. 2011 - Upgraded to CRITICAL. Sections of vertical slope with highway on top. Heavy vegetation in front of most of the erosion pockets. 2015: New rock placed on the levee slope for most of the downstream end, but bad spots still remain. [2015 Site ID: SAC 16-8 L]					

Photo 1 of 1 : SP_2016_NA0002_63_20_20160308_00019.jpg



USACE 2013 Photo #1

LM Start	3.73	Rating **	M	Issue No.	114
LM End	3.73	Issue Type +	Ma	Location *	LS
Category	Earthen Levee			GPS Latitude/Longitude	
				Start	End
Item	Trim / Thin Trees			38.163163 °	38.163163 °
				-121.619370 °	-121.619370 °
DWR ID	DWR_NA0002_02_s _ 2016_114				
Comment Code					
T1 : Trim trees to at least five feet above ground level.					
Inspector Comment					

No Photos

* Location LS : Land Side N/A : Not Applicable WS : Water Side CR : Crown		** Rating A : Acceptable N : Not Inspected/Rated M : Minimally Acceptable C : Corrected U : Unacceptable A/W : Acceptable but Monitor & Maintain		+ Issue Type Ma : Maintenance Deficiency Ob : Design & System Obsolescence En : Enforcement
--	--	---	--	---

**Flood Control Project Maintenance
Levee Inspections**

Maintenance Issue Types Only, Levee Inspection Report By Mile - Spring 2016

Brannan Andrus Levee Maintenance District

Waterway	Bank	Unit Miles	Inspection Start/End	Inspector
Unit No. 02 Sacramento River	Left	11.54	03/21/2016 03/22/2016	Richard Willoughby

LM Start	3.96	Rating **	U	Issue No.	102
LM End	3.96	Issue Type +	Ma	Location *	LS
Category	Earthen Levee			GPS Latitude/Longitude	
				Start	End
Item	Trim / Thin Trees			38.164246 °	38.164246 °
				-121.623272 °	-121.623272 °
DWR ID	DWR_NA0002_02_s _ 2014_102				
Comment Code					
T1 : Trim trees to at least five feet above ground level.					
Inspector Comment					
Untrimmed tree blocking landward slope and toe.					

Photo 1 of 1 : SP_2016_NA0002_63_102_20160308_00069.jpg



Looking south at dense trees on landward slope and toe.

LM Start	5.01	Rating **	M	Issue No.	95
LM End	5.01	Issue Type +	Ma	Location *	LS
Category	Earthen Levee			GPS Latitude/Longitude	
				Start	End
Item	Trim / Thin Trees			38.169770 °	38.169770 °
				-121.641032 °	-121.641032 °
DWR ID	DWR_NA0002_02_f _ 2015_95				
Comment Code					
T1 : Trim trees to at least five feet above ground level.					
Inspector Comment					

No Photos

LM Start	5.31	Rating **	U	Issue No.	9
LM End	5.42	Issue Type +	Ma	Location *	WS
Category	Earthen Levee			GPS Latitude/Longitude	
				Start	End
Item	Trim / Thin Trees			38.171878 °	38.171800 °
				-121.645552 °	-121.647447 °
DWR ID	DWR_NA0002_02_s _ 2012_9				
Comment Code					
T2 : Thin trees to allow visibility of the ground and room to flood fight.					
Inspector Comment					

Photo 1 of 3 : SP_2016_NA0002_63_9_20160308_00008.jpg



Looking southeast at dense trees on landside slope and toe.

* Location		** Rating		+ Issue Type	
LS : Land Side	N/A : Not Applicable	A : Acceptable	N : Not Inspected/Rated	Ma : Maintenance Deficiency	
WS : Water Side		M : Minimally Acceptable	C : Corrected	Ob : Design & System Obsolescence	
CR : Crown		U : Unacceptable	A/W : Acceptable but Monitor & Maintain	En : Enforcement	

**Flood Control Project Maintenance
Levee Inspections**

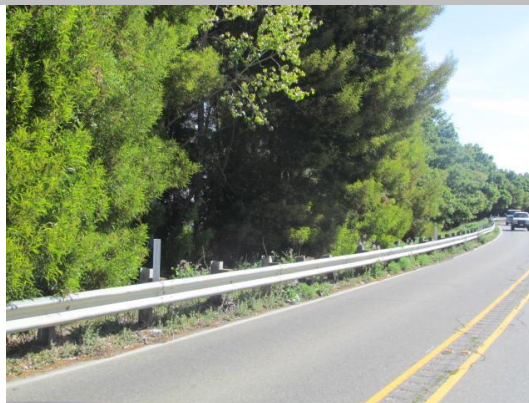
Maintenance Issue Types Only, Levee Inspection Report By Mile - Spring 2016

Brannan Andrus Levee Maintenance District

Waterway	Bank	Unit Miles	Inspection Start/End	Inspector
Unit No. 02 Sacramento River	Left	11.54	03/21/2016 03/22/2016	Richard Willoughby

LM Start	5.31	Rating **	U	Issue No.	9 (cont)	
LM End	5.42	Issue Type +	Ma	Location *	WS	
Category	Earthen Levee			GPS Latitude/Longitude		
				Start		End
Item	Trim / Thin Trees			38.171878 °		38.171800 °
				-121.645552 °		-121.647447 °
DWR ID	DWR_NA0002_02_s _ 2012_9					
Comment Code						
T2 : Thin trees to allow visibility of the ground and room to flood fight.						
Inspector Comment						

Photo 2 of 3 : SP_2016_NA0002_63_9_20160308_00009.jpg



Looking northwest at dense trees on waterward shoulder and slope.

LM Start	5.31	Rating **	U	Issue No.	9 (cont)
LM End	5.42	Issue Type +	Ma	Location *	WS

Photo 3 of 3 : SP_2016_NA0002_63_9_20160308_00010.jpg



Looking west at dense trees on waterward should and slope.

LM Start	5.58	Rating **	A/W	Issue No.	10
LM End	5.58	Issue Type +	Ma	Location *	WS
Category	Earthen Levee			GPS Latitude/Longitude	
				Start	End
Item	Trim / Thin Trees			38.172019 °	38.172019 °
				-121.650327 °	-121.650327 °
DWR ID	DWR_NA0002_02_s _ 2012_10				
Comment Code					
T1 : Trim trees to at least five feet above ground level.					
Inspector Comment					

No Photos

* Location		** Rating		+ Issue Type	
LS : Land Side	N/A : Not Applicable	A : Acceptable	N : Not Inspected/Rated	Ma : Maintenance Deficiency	
WS : Water Side		M : Minimally Acceptable	C : Corrected	Ob : Design & System Obsolescence	
CR : Crown		U : Unacceptable	A/W : Acceptable but Monitor & Maintain	En : Enforcement	

**Flood Control Project Maintenance
Levee Inspections**

Maintenance Issue Types Only, Levee Inspection Report By Mile - Spring 2016

Brannan Andrus Levee Maintenance District

Waterway	Bank	Unit Miles	Inspection Start/End	Inspector
Unit No. 02 Sacramento River	Left	11.54	03/21/2016 03/22/2016	Richard Willoughby

LM Start	5.65	Rating **	M	Issue No.	11
LM End	5.69	Issue Type +	Ma	Location *	WS
Category	Earthen Levee			GPS Latitude/Longitude	
				Start	End
Item	Vegetation			38.172308 °	38.172497 °
				-121.651552 °	-121.652243 °
DWR ID	DWR_NA0002_02_s _ 2012_11				
Comment Code					
V2 : Remove the wild growth other than native grasses from the levee slopes.					
Inspector Comment					
Bamboo on waterward slope.					

Photo 1 of 1 : SP_2016_NA0002_63_11_20160308_00011.jpg



LM Start	5.66	Rating **	A/W	Issue No.	36
LM End	5.69	Issue Type +	Ma	Location *	LS
Category	Earthen Levee			GPS Latitude/Longitude	
				Start	End
Item	Trim / Thin Trees			38.172388 °	38.172512 °
				-121.651892 °	-121.652322 °
DWR ID	DWR_NA0002_02_s _ 2012_36				
Comment Code					
T1 : Trim trees to at least five feet above ground level.					
Inspector Comment					

No Photos

LM Start	6.12	Rating **	M	Issue No.	103
LM End	6.12	Issue Type +	Ma	Location *	LS
Category	Earthen Levee			GPS Latitude/Longitude	
				Start	End
Item	Vegetation			38.174670 °	38.174670 °
				-121.659592 °	-121.659592 °
DWR ID	DWR_NA0002_02_f _ 2015_103				
Comment Code					
V4 : Elderberries are blocking visibility and flood fight capability.					
Inspector Comment					

No Photos

* Location		** Rating		+ Issue Type	
LS : Land Side	N/A : Not Applicable	A : Acceptable	N : Not Inspected/Rated	Ma : Maintenance Deficiency	
WS : Water Side		M : Minimally Acceptable	C : Corrected	Ob : Design & System Obsolescence	
CR : Crown		U : Unacceptable	A/W : Acceptable but Monitor & Maintain	En : Enforcement	

**Flood Control Project Maintenance
Levee Inspections**

Maintenance Issue Types Only, Levee Inspection Report By Mile - Spring 2016

Brannan Andrus Levee Maintenance District

Waterway	Bank	Unit Miles	Inspection Start/End	Inspector
Unit No. 02 Sacramento River	Left	11.54	03/21/2016 03/22/2016	Richard Willoughby

LM Start	6.23	Rating **	M	Issue No.	110
LM End	6.23	Issue Type +	Ma	Location *	LS
Category	Earthen Levee			GPS Latitude/Longitude	
				Start	End
Item	Trim / Thin Trees			38.174182 °	38.174182 °
				-121.661633 °	-121.661633 °
DWR ID	DWR_NA0002_02_s _ 2015_110				
Comment Code					
T1 : Trim trees to at least five feet above ground level.					
Inspector Comment					

No Photos

LM Start	6.98	Rating **	M	Issue No.	23
LM End	7.04	Issue Type +	Ma	Location *	WS
Category	Supplemental			GPS Latitude/Longitude	
				Start	End
Item	2015 USACE Erosion Survey, DRAFT			38.166583 °	38.165794 °
				-121.670684 °	-121.671014 °
DWR ID	DWR_NA0002_02_s _ 2016_23				
Comment Code					
Inspector Comment					
2011 - Large section of bank slumped off. 2015: No observed changes. [2015 Site ID: SAC_13-6_L]					

Photo 1 of 1 : SP_2016_NA0002_63_23_20160308_00022.jpg



USACE 2013 Photo #1

LM Start	7.13	Rating **	M	Issue No.	112
LM End	7.13	Issue Type +	Ma	Location *	LS
Category	Earthen Levee			GPS Latitude/Longitude	
				Start	End
Item	Trim / Thin Trees			38.164465 °	38.164465 °
				-121.671292 °	-121.671292 °
DWR ID	DWR_NA0002_02_f _ 2015_112				
Comment Code					
T1 : Trim trees to at least five feet above ground level.					
Inspector Comment					

No Photos

* Location LS : Land Side N/A : Not Applicable WS : Water Side CR : Crown		** Rating A : Acceptable N : Not Inspected/Rated M : Minimally Acceptable C : Corrected U : Unacceptable A/W : Acceptable but Monitor & Maintain		+ Issue Type Ma : Maintenance Deficiency Ob : Design & System Obsolescence En : Enforcement
--	--	---	--	---

**Flood Control Project Maintenance
Levee Inspections**

Maintenance Issue Types Only, Levee Inspection Report By Mile - Spring 2016

Brannan Andrus Levee Maintenance District

Waterway	Bank	Unit Miles	Inspection Start/End	Inspector
Unit No. 02 Sacramento River	Left	11.54	03/21/2016 03/22/2016	Richard Willoughby

LM Start	7.80	Rating **	M	Issue No.	106
LM End	7.80	Issue Type +	Ma	Location *	LS
Category	Earthen Levee			GPS Latitude/Longitude	
				Start	End
Item	Encroachments			38.157007 °	38.157007 °
				-121.678695 °	-121.678695 °
DWR ID	DWR_NA0002_02_f_2014_106				
Comment Code					
TR : Tree or limb					
Inspector Comment					
Broken limbs were removed.					

Photo 1 of 1 : SP_2016_NA0002_63_106_20160308_00072.jpg



Looking southeast at broken tree limb on landward shoulder.

LM Start	8.20	Rating **	U	Issue No.	17
LM End	8.42	Issue Type +	Ma	Location *	WS
Category	Supplemental			GPS Latitude/Longitude	
				Start	End
Item	2015 USACE Erosion Survey, DRAFT			38.151867 °	38.148711 °
				-121.682201 °	-121.682790 °
DWR ID	DWR_NA0002_02_s_2016_17				
Comment Code					
Inspector Comment					
2010 - Small inlet area behind a man-built spit. Bank is slumping and could possibly be fixed with maintenance. 2011 - Site continues to worsen. 2015: Upgraded to Critical [2015 Site ID: SAC_12-1_L]					

Photo 1 of 1 : SP_2016_NA0002_63_17_20160308_00017.jpg



USACE 2013 Photo #1

LM Start	8.32	Rating **	M	Issue No.	44
LM End	8.68	Issue Type +	Ma	Location *	LS
Category	Earthen Levee			GPS Latitude/Longitude	
				Start	End
Item	Trim / Thin Trees			38.150112 °	38.144977 °
				-121.682305 °	-121.683345 °
DWR ID	DWR_NA0002_02_s_2012_44				
Comment Code					
T1 : Trim trees to at least five feet above ground level.					
Inspector Comment					

Photo 1 of 1 : SP_2016_NA0002_63_44_20160308_00040.jpg



Looking southeast at trees on landside shoulder and slope.

* Location LS : Land Side N/A : Not Applicable WS : Water Side CR : Crown		** Rating A : Acceptable M : Minimally Acceptable U : Unacceptable N : Not Inspected/Rated C : Corrected A/W : Acceptable but Monitor & Maintain		+ Issue Type Ma : Maintenance Deficiency Ob : Design & System Obsolescence En : Enforcement	
--	--	---	--	---	--

**Flood Control Project Maintenance
Levee Inspections**

Maintenance Issue Types Only, Levee Inspection Report By Mile - Spring 2016

Brannan Andrus Levee Maintenance District

Waterway	Bank	Unit Miles	Inspection Start/End	Inspector
Unit No. 02 Sacramento River	Left	11.54	03/21/2016 03/22/2016	Richard Willoughby

LM Start	8.40	Rating **	A/W	Issue No.	57
LM End	8.40	Issue Type +	Ma	Location *	WS
Category	Earthen Levee			GPS Latitude/Longitude	
				Start	End
Item	Encroachments			38.149000 °	38.149000 °
				-121.682479 °	-121.682479 °
DWR ID	DWR_NA0002_02_f_2013_57				
Comment Code					
TR : Tree or limb					
Inspector Comment					
Tree limbs on waterward slope.					

No Photos

LM Start	8.44	Rating **	A/W	Issue No.	33
LM End	8.44	Issue Type +	Ma	Location *	WS
Category	Earthen Levee			GPS Latitude/Longitude	
				Start	End
Item	Encroachments			38.148323 °	38.148323 °
				-121.682548 °	-121.682548 °
DWR ID	DWR_NA0002_02_s_2012_33				
Comment Code					
TR : Tree or limb					
Inspector Comment					

No Photos

LM Start	8.65	Rating **	U	Issue No.	48
LM End	8.86	Issue Type +	Ma	Location *	LS
Category	Earthen Levee			GPS Latitude/Longitude	
				Start	End
Item	Trim / Thin Trees			38.145368 °	38.142430 °
				-121.683072 °	-121.683978 °
DWR ID	DWR_NA0002_02_s_2013_48				
Comment Code					
T1 : Trim trees to at least five feet above ground level.					
Inspector Comment					

Photo 1 of 2 : SP_2016_NA0002_63_48_20160308_00044.jpg



Looking south at trees on landward slope.

* Location		** Rating		+ Issue Type	
LS : Land Side	N/A : Not Applicable	A : Acceptable	N : Not Inspected/Rated	Ma : Maintenance Deficiency	
WS : Water Side		M : Minimally Acceptable	C : Corrected	Ob : Design & System Obsolescence	
CR : Crown		U : Unacceptable	A/W : Acceptable but Monitor & Maintain	En : Enforcement	

**Flood Control Project Maintenance
Levee Inspections**

Maintenance Issue Types Only, Levee Inspection Report By Mile - Spring 2016

Brannan Andrus Levee Maintenance District

Waterway	Bank	Unit Miles	Inspection Start/End	Inspector
Unit No. 02 Sacramento River	Left	11.54	03/21/2016 03/22/2016	Richard Willoughby

LM Start	8.65	Rating **	U	Issue No.	48 (cont)	
LM End	8.86	Issue Type +	Ma	Location *	LS	
Category	Earthen Levee			GPS Latitude/Longitude		
				Start		End
Item	Trim / Thin Trees			38.145368 °		38.142430 °
				-121.683072 °		-121.683978 °
DWR ID	DWR_NA0002_02_s _ 2013_48					
Comment Code						
T1 : Trim trees to at least five feet above ground level.						
Inspector Comment						

Photo 2 of 2 : SP_2016_NA0002_63_48_20160308_00045.jpg



Looking north at dense trees on landward slope and toe.

LM Start	8.90	Rating **	A/W	Issue No.	47
LM End	8.90	Issue Type +	Ma	Location *	LS
Category	Earthen Levee			GPS Latitude/Longitude	
				Start	End
Item	Trim / Thin Trees			38.141928 °	38.141928 °
				-121.684308 °	-121.684308 °
DWR ID	DWR_NA0002_02_s _ 2013_47				
Comment Code					
T1 : Trim trees to at least five feet above ground level.					
Inspector Comment					

No Photos

* Location LS : Land Side N/A : Not Applicable WS : Water Side CR : Crown		** Rating A : Acceptable N : Not Inspected/Rated M : Minimally Acceptable C : Corrected U : Unacceptable A/W : Acceptable but Monitor & Maintain		+ Issue Type Ma : Maintenance Deficiency Ob : Design & System Obsolescence En : Enforcement
--	--	---	--	---

**Flood Control Project Maintenance
Levee Inspections**

Maintenance Issue Types Only, Levee Inspection Report By Mile - Spring 2016

Brannan Andrus Levee Maintenance District

Waterway	Bank	Unit Miles	Inspection Start/End	Inspector
Unit No. 02 Sacramento River	Left	11.54	03/21/2016 03/22/2016	Richard Willoughby

LM Start	8.96	Rating **	U	Issue No.	19
LM End	9.18	Issue Type +	Ma	Location *	WS
Category	Supplemental			GPS Latitude/Longitude	
				Start	End
Item	2015 USACE Erosion Survey, DRAFT			38.141399 °	38.138158 °
				-121.685346 °	-121.686531 °
DWR ID	DWR_NA0002_02_s _ 2016_19				
Comment Code					
Inspector Comment					
2008 - Erosion causing vertical bank at the highway on top of levee. The whole bank along the highway should be repaired. 2009 - Minimal new erosion. 2011 - Bank continues to slowly erode. 2012 - Upgrade to critical, new erosion since lat year and steeper slopes in sections. 2015: Road foundation and cables exposed. Extremely large tree with exposed roots looks likely to fail and take out a significant portion of the levee. [2015 Site ID: SAC_11-2_L]					

Photo 1 of 1 : SP_2016_NA0002_63_19_20160308_00018.jpg



USACE 2013 Photo #1

LM Start	9.15	Rating **	M	Issue No.	115
LM End	9.15	Issue Type +	Ma	Location *	WS
Category	Earthen Levee			GPS Latitude/Longitude	
				Start	End
Item	Erosion / Bank Caving			38.138510 °	38.138510 °
				-121.686124 °	-121.686124 °
DWR ID	DWR_NA0002_02_s _ 2016_115				
Comment Code					
E1 : Note and monitor erosion site.					
Inspector Comment					
Erosion on waterward shoulder along highway appears to be foot erosion. But should be monitored.					

Photo 1 of 3 : SP_2016_NA0002_63_115_20160323_00175.jpg



* Location
LS : Land Side N/A : Not Applicable
WS : Water Side
CR : Crown

** Rating
A : Acceptable N : Not Inspected/Rated
M : Minimally Acceptable C : Corrected
U : Unacceptable A/W : Acceptable but Monitor & Maintain

+ Issue Type
Ma : Maintenance Deficiency
Ob : Design & System Obsolescence
En : Enforcement

**Flood Control Project Maintenance
Levee Inspections**

Maintenance Issue Types Only, Levee Inspection Report By Mile - Spring 2016

Brannan Andrus Levee Maintenance District

Waterway	Bank	Unit Miles	Inspection Start/End	Inspector
Unit No. 02 Sacramento River	Left	11.54	03/21/2016 03/22/2016	Richard Willoughby

LM Start	9.15	Rating **	M	Issue No.	115 (cont)	
LM End	9.15	Issue Type +	Ma	Location *	WS	
Category	Earthen Levee			GPS Latitude/Longitude		
				Start		End
Item	Erosion / Bank Caving			38.138510 °		38.138510 °
				-121.686124 °		-121.686124 °
DWR ID	DWR_NA0002_02_s _ 2016_115					
Comment Code						
E1 : Note and monitor erosion site.						
Inspector Comment						
Erosion on waterward shoulder along highway appears to be foot erosion. But should be monitored.						

Photo 2 of 3 : SP_2016_NA0002_63_115_20160323_00174.jpg



Looking north at erosion on waterward shoulder.

LM Start	9.15	Rating **	M	Issue No.	115 (cont)
LM End	9.15	Issue Type +	Ma	Location *	WS

Photo 3 of 3 : SP_2016_NA0002_63_115_20160323_00176.jpg



LM Start	9.32	Rating **	U	Issue No.	116
LM End	9.35	Issue Type +	Ma	Location *	LS
Category	Earthen Levee			GPS Latitude/Longitude	
				Start	End
Item	Vegetation			38.136024 °	38.135699 °
				-121.686206 °	-121.686170 °
DWR ID	DWR_NA0002_02_s _ 2016_116				
Comment Code					
V2 : Remove the wild growth other than native grasses from the levee slopes.					
Inspector Comment					
Dense vegetation on landward slope and toe.					

Photo 1 of 2 : SP_2016_NA0002_63_116_20160323_00177.jpg



Looking south at dense vegetation on landward slope and toe.

* Location LS : Land Side N/A : Not Applicable WS : Water Side CR : Crown		** Rating A : Acceptable M : Minimally Acceptable U : Unacceptable N : Not Inspected/Rated C : Corrected A/W : Acceptable but Monitor & Maintain		+ Issue Type Ma : Maintenance Deficiency Ob : Design & System Obsolescence En : Enforcement	
--	--	---	--	---	--

**Flood Control Project Maintenance
Levee Inspections**

Maintenance Issue Types Only, Levee Inspection Report By Mile - Spring 2016

Brannan Andrus Levee Maintenance District

Waterway	Bank	Unit Miles	Inspection Start/End	Inspector
Unit No. 02 Sacramento River	Left	11.54	03/21/2016 03/22/2016	Richard Willoughby

LM Start	9.32	Rating **	U	Issue No.	116 (cont)	
LM End	9.35	Issue Type +	Ma	Location *	LS	
Category	Earthen Levee			GPS Latitude/Longitude		
				Start		End
Item	Vegetation			38.136024 °		38.135699 °
				-121.686206 °		-121.686170 °
DWR ID	DWR_NA0002_02_s _ 2016_116					
Comment Code						
V2 : Remove the wild growth other than native grasses from the levee slopes.						
Inspector Comment						
Dense vegetation on landward slope and toe.						

Photo 2 of 2 : SP_2016_NA0002_63_116_20160323_00178.jpg



LM Start	9.60	Rating **	U	Issue No.	16
LM End	9.71	Issue Type +	Ma	Location *	WS
Category	Earthen Levee			GPS Latitude/Longitude	
				Start	End
Item	Trim / Thin Trees			38.132095 °	38.130537 °
				-121.686243 °	-121.686737 °
DWR ID	DWR_NA0002_02_s _ 2012_16				
Comment Code					
T3 : Trim and thin trees to allow visibility of the ground and room to flood fight.					
Inspector Comment					
Untrimmed trees within twenty foot zone on waterward slope.					

Photo 1 of 2 : SP_2016_NA0002_63_16_20160308_00015.jpg



Looking south at dense vegetation (trees) on waterward slope.

LM Start	9.60	Rating **	U	Issue No.	16 (cont)
LM End	9.71	Issue Type +	Ma	Location *	WS

Photo 2 of 2 : SP_2016_NA0002_63_16_20160308_00016.jpg



Looking north at dense vegetation (trees) on waterward slope.

* Location LS : Land Side N/A : Not Applicable WS : Water Side CR : Crown		** Rating A : Acceptable M : Minimally Acceptable U : Unacceptable		N : Not Inspected/Rated C : Corrected A/W : Acceptable but Monitor & Maintain		+ Issue Type Ma : Maintenance Deficiency Ob : Design & System Obsolescence En : Enforcement	
---	--	---	--	---	--	--	--

**Flood Control Project Maintenance
Levee Inspections**

Maintenance Issue Types Only, Levee Inspection Report By Mile - Spring 2016

Brannan Andrus Levee Maintenance District

Waterway	Bank	Unit Miles	Inspection Start/End	Inspector
Unit No. 02 Sacramento River	Left	11.54	03/21/2016 03/22/2016	Richard Willoughby

LM Start	9.78	Rating **	M	Issue No.	21
LM End	9.93	Issue Type +	Ma	Location *	WS
Category	Supplemental			GPS Latitude/Longitude	
				Start	End
Item	2015 USACE Erosion Survey, DRAFT			38.129722 °	38.127672 °
				-121.687468 °	-121.688646 °
DWR ID	DWR_NA0002_02_s _ 2016_21				
Comment Code					
Inspector Comment					
2004 - Wave wash pockets approximately 100 ft long with new full bank rock between the pockets. 2005 - Spot repairs, but toe is still eroding in several places. 2006 - Low vertical bank along roadway. 2007 - A PL 84-99 repair was constructed, it cover the majority of the site with the exception of the upstream 150 to 200 ft and the downstream 250 ft, therefore it is being kept in the inventory. 2009 - Minimal new erosion. 2010 - Outboard berm looks good, but the banks are still very steep. 2011 - While the outboard berm is protecting against wave wash, bank still has slumping issues. 2015: No observed changes. [2015 Site ID: SAC_10-8_L]					

Photo 1 of 1 : SP_2016_NA0002_63_21_20160308_00020.jpg



USACE 2013 Photo #1

LM Start	10.17	Rating **	U	Issue No.	117
LM End	10.19	Issue Type +	Ma	Location *	WS
Category	Earthen Levee			GPS Latitude/Longitude	
				Start	End
Item	Vegetation			38.124372 °	38.124097 °
				-121.690045 °	-121.690186 °
DWR ID	DWR_NA0002_02_s _ 2016_117				
Comment Code					
V2 : Remove the wild growth other than native grasses from the levee slopes.					
Inspector Comment					
Dense vegetation (vines) on waterward slope.					

Photo 1 of 2 : SP_2016_NA0002_63_117_20160323_00179.jpg



Looking west at dense vegetation (vines) on waterward slope.

* Location LS : Land Side N/A : Not Applicable WS : Water Side CR : Crown		** Rating A : Acceptable M : Minimally Acceptable U : Unacceptable N : Not Inspected/Rated C : Corrected A/W : Acceptable but Monitor & Maintain		+ Issue Type Ma : Maintenance Deficiency Ob : Design & System Obsolescence En : Enforcement	
---	--	--	--	--	--

**Flood Control Project Maintenance
Levee Inspections**

Maintenance Issue Types Only, Levee Inspection Report By Mile - Spring 2016

Brannan Andrus Levee Maintenance District

Waterway	Bank	Unit Miles	Inspection Start/End	Inspector
Unit No. 02 Sacramento River	Left	11.54	03/21/2016 03/22/2016	Richard Willoughby

LM Start	10.17	Rating **	U	Issue No.	117 (cont)	
LM End	10.19	Issue Type +	Ma	Location *	WS	
Category	Earthen Levee			GPS Latitude/Longitude		
				Start		End
Item	Vegetation			38.124372 °		38.124097 °
				-121.690045 °		-121.690186 °
DWR ID	DWR_NA0002_02_s_2016_117					
Comment Code						
V2 : Remove the wild growth other than native grasses from the levee slopes.						
Inspector Comment						
Dense vegetation (vines) on waterward slope.						

Photo 2 of 2 : SP_2016_NA0002_63_117_20160323_00180.jpg



LM Start	10.26	Rating **	U	Issue No.	107
LM End	10.48	Issue Type +	Ma	Location *	WS
Category	Earthen Levee			GPS Latitude/Longitude	
				Start	End
Item	Trim / Thin Trees			38.123119 °	38.120256 °
				-121.690488 °	-121.692298 °
DWR ID	DWR_NA0002_02_f _ 2014_107				
Comment Code					
T3 : Trim and thin trees to allow visibility of the ground and room to flood fight.					
Inspector Comment					
Bamboo on waterward slope.					

Photo 1 of 1 : SP_2016_NA0002_63_107_20160308_00073.jpg



Looking south at dense vegetation on waterward slope.

LM Start	10.28	Rating **	M	Issue No.	113
LM End	10.28	Issue Type +	Ma	Location *	WS
Category	Earthen Levee			GPS Latitude/Longitude	
				Start	End
Item	Erosion / Bank Caving			38.122904 °	38.122904 °
				-121.690819 °	-121.690819 °
DWR ID	DWR_NA0002_02_f_2015_113				
Comment Code					
E2 : Schedule repair of erosion site prior to the next inspection.					
Inspector Comment					
Bank erosion on waterward shoulder greater than 3" depth but less than 3' in length.					

Photo 1 of 1 : SP_2016_NA0002_63_113_20160308_00074.jpg



Looking at erosion on waterward shoulder.

* Location		** Rating		+ Issue Type	
LS : Land Side	N/A : Not Applicable	A : Acceptable	N : Not Inspected/Rated	Ma : Maintenance Deficiency	
WS : Water Side		M : Minimally Acceptable	C : Corrected	Ob : Design & System Obsolescence	
CR : Crown		U : Unacceptable	A/W : Acceptable but Monitor & Maintain	En : Enforcement	