

**Flood Control Project Maintenance  
Levee Inspections**

**Maintenance Issue Types Only, Levee Inspection Report By Mile - Fall 2017**

**Sutter Maintenance Yard Maintenance Area 0017**

Waterway	Bank	Unit Miles	Inspection Start/End	Inspector
Unit No. 01 Lake County Sutter Maintenance Yard - Middle Creek	Left	3.87	10/25/2017 10/25/2017	Bob Duffey

LM Start		Rating **	A	Issue No.	7
LM End		Issue Type +	Ma	Location *	N/A
Category	Earthen Levee			GPS Latitude/Longitude	
				Start	End
Item	Operations & Maintenance Manuals				
DWR ID	DWR_MA0017_01_s _ 2013_7				
Comment Code					
Inspector Comment					
The LMA has the O&M manuals.					

No Photos

LM Start		Rating **	A	Issue No.	8
LM End		Issue Type +	Ma	Location *	N/A
Category	Earthen Levee			GPS Latitude/Longitude	
				Start	End
Item	Emergency Supplies & Equipment				
DWR ID	DWR_MA0017_01_s _ 2013_8				
Comment Code					
Inspector Comment					
The LMA has adequate flood fight supplies and equipment.					

No Photos

<b>* Location</b> LS : Land Side    N/A : Not Applicable WS : Water Side CR : Crown	<b>** Rating</b> A : Acceptable M : Minimally Acceptable U : Unacceptable	N : Not Inspected/Rated C : Corrected A/W : Acceptable but Monitor & Maintain	<b>+ Issue Type</b> Ma : Maintenance Deficiency Ob : Design & System Obsolescence En : Enforcement
--	--	---	---

**Flood Control Project Maintenance  
Levee Inspections**

**Maintenance Issue Types Only, Levee Inspection Report By Mile - Fall 2017**

**Sutter Maintenance Yard Maintenance Area 0017**

Waterway	Bank	Unit Miles	Inspection Start/End	Inspector
Unit No. 01 Lake County Sutter Maintenance Yard - Middle Creek	Left	3.87	10/25/2017 10/25/2017	Bob Duffey

LM Start		Rating **	A	Issue No.	9	
LM End		Issue Type +	Ma	Location *	N/A	
Category	Earthen Levee			GPS Latitude/Longitude		
				Start	End	
Item	Flood Preparedness & Training				o	
					o	
DWR ID	DWR_MA0017_01_s_2013_9					
Comment Code						
Inspector Comment						
The LMA completed flood fight training in 2014.						

No Photos

LM Start	3.50	Rating **	M	Issue No.	17
LM End	3.50	Issue Type +	Ma	Location *	LS
Category	Earthen Levee			GPS Latitude/Longitude	
				Start	End
Item	Trim / Thin Trees			39.147927 °	39.147927 °
				-122.911294 °	-122.911294 °
DWR ID	DWR_MA0017_01_f_2016_17				
Comment Code					
T1 : Trim trees to at least five feet above ground level.					
Inspector Comment					

No Photos

LM Start	3.75	Rating **	A	Issue No.	36
LM End	3.75	Issue Type +	Ma	Location *	LS
Category	Earthen Levee			GPS Latitude/Longitude	
				Start	End
Item	Vegetation			39.145682 °	39.145682 °
				-122.907717 °	-122.907717 °
DWR ID	DWR_MA0017_01_f_2017_36				
Comment Code					
V1 : Control annual grass and weeds on the levee slopes and easements.					
Inspector Comment					
The vegetation was removed from both slopes.					

Photo 1 of 1 : FA\_2017\_MA0017\_339\_36\_20171030\_00072.jpg



View of no vegetation on both slopes.

* Location		** Rating		+ Issue Type	
LS : Land Side	N/A : Not Applicable	A : Acceptable	N : Not Inspected/Rated	Ma : Maintenance Deficiency	
WS : Water Side		M : Minimally Acceptable	C : Corrected	Ob : Design & System Obsolescence	
CR : Crown		U : Unacceptable	A/W : Acceptable but Monitor & Maintain	En : Enforcement	

**Flood Control Project Maintenance  
Levee Inspections**

**Maintenance Issue Types Only, Levee Inspection Report By Mile - Fall 2017**

**Sutter Maintenance Yard Maintenance Area 0017**

Waterway	Bank	Unit Miles	Inspection Start/End	Inspector
Unit No. 01 Lake County Sutter Maintenance Yard - Middle Creek	Left	3.87	10/25/2017 10/25/2017	Bob Duffey

LM Start	3.81	Rating **	M	Issue No.	15
LM End	3.84	Issue Type +	Ma	Location *	LS
Category	Earthen Levee			GPS Latitude/Longitude	
				Start	End
Item	Vegetation			39.144980 °	39.144620 °
				-122.907073 °	-122.906546 °
DWR ID	DWR_MA0017_01_s_2016_15				
Comment Code					
V2 : Remove the wild growth other than native grasses from the levee slopes.					
Inspector Comment					
Large bushes and brambles covering wire fence, limiting visibility and access.					

Photo 1 of 1 : FA\_2017\_MA0017\_339\_15\_20170911\_00003.jpg



View of the large bushes limiting visibility and access.

LM Start	3.84	Rating **	M	Issue No.	25
LM End	3.84	Issue Type +	Ma	Location *	LS
Category	Earthen Levee			GPS Latitude/Longitude	
				Start	End
Item	Trim / Thin Trees			39.144695 °	39.144695 °
				-122.906668 °	-122.906668 °
DWR ID	DWR_MA0017_01_s_2017_25				
Comment Code					
T2 : Thin trees to allow visibility of the ground and room to flood fight.					
Inspector Comment					
Trim the trees along the landside toe.					

Photo 1 of 1 : FA\_2017\_MA0017\_339\_25\_20170911\_00006.jpg



View of the trees along the landside toe.

<b>* Location</b> LS : Land Side    N/A : Not Applicable WS : Water Side CR : Crown		<b>** Rating</b> A : Acceptable                      N : Not Inspected/Rated M : Minimally Acceptable        C : Corrected U : Unacceptable                  A/W : Acceptable but Monitor & Maintain		<b>+ Issue Type</b> Ma : Maintenance Deficiency Ob : Design & System Obsolescence En : Enforcement
--	--	---	--	---

**Flood Control Project Maintenance  
Levee Inspections**

**Maintenance Issue Types Only, Levee Inspection Report By Mile - Fall 2017**

**Sutter Maintenance Yard Maintenance Area 0017**

Waterway	Bank	Unit Miles	Inspection Start/End	Inspector
Unit No. 01 Lake County Sutter Maintenance Yard - Middle Creek	Left	3.87	10/25/2017 10/25/2017	Bob Duffey

LM Start	3.95	Rating **	A/W	Issue No.	38
LM End	3.95	Issue Type +	Ma	Location *	
Category	Supplemental			GPS Latitude/Longitude	
				Start	End
Item	DWR UCIP LMA Responsibility			39.143792 °	39.143792 °
				-122.904798 °	-122.904798 °
DWR ID					

**Comment Code**

**Inspector Comment**

FS\_ID:50814  
DS\_ID:844  
EP\_NO: 11463  
Repair Type: No Action Needed  
Crossing Status: Found  
UCIP Comments: 10/19/2016 Crossing appears to be in good ondition.  
(DWR Sutter Yard- AFreitag)6/14/2016 crossing appears to be in good condition.4/23/2015 No issues with pipe.7/3/2014 Same as last inspection.12/23/2013 Same as last inspection.8/2/2013 New flap gate installed. No other issues with pipe.  
FIELD\_STRUCT\_DESC: 24-inch corrugated metal drainage pipe through the levee, 12.4 feet below the crown. Flap gate on the waterside (WS) end. Timber walkway on the landside (LS) slope to a timber walkway to pump house mounted on piles in drainage ditch. (24-inch pipe [HLM 3.99] authorized under Automatic Board Order (ABO) issued as Permit No. 11463, 1975 - Audrey Jones). [Additional Reference(s): DWR Levee Log, 2005. USACE Sacramento O&M Manual 506.2, August 1961, (HLM 3.99)].  
FS Date: 11/21/2016 12:09:38 PM

LM Start	<b>3.95</b>	Rating **	A/W	Issue No.	<b>38 (cont)</b>
LM End	<b>3.95</b>	Issue Type +	Ma	Location *	

Photo 1 of 3 : UCIP\_FA\_2017\_50814\_46849.jpg



24-inch CMP at outlet on WS toe.

Photo 2 of 3 : UCIP\_FA\_2017\_50814\_46848.jpg



Pumphouse on piles at LS toe.

<b>* Location</b> LS : Land Side    N/A : Not Applicable WS : Water Side CR : Crown		<b>** Rating</b> A : Acceptable                      N : Not Inspected/Rated M : Minimally Acceptable        C : Corrected U : Unacceptable                  A/W : Acceptable but Monitor & Maintain		<b>+ Issue Type</b> Ma : Maintenance Deficiency Ob : Design & System Obsolescence En : Enforcement
--	--	---	--	---



**Flood Control Project Maintenance  
Levee Inspections**

## Maintenance Issue Types Only, Levee Inspection Report By Mile - Fall 2017

### Sutter Maintenance Yard Maintenance Area 0017

Waterway	Bank	Unit Miles	Inspection Start/End	Inspector
Unit No. 01 Lake County Sutter Maintenance Yard - Middle Creek	Left	3.87	10/25/2017 10/25/2017	Bob Duffey

LM Start	3.95	Rating **	A/W	Issue No.	38 (cont)	
LM End	3.95	Issue Type +	Ma	Location *		
Category	Supplemental			GPS Latitude/Longitude		
				Start	End	
Item	DWR UCIP LMA Responsibility			39.143792 °	39.143792 °	
				-122.904798 °	-122.904798 °	
DWR ID						
Comment Code						
Inspector Comment						
FS_ID:50814						
DS_ID:844						
EP_NO: 11463						
Repair Type: No Action Needed						
Crossing Status: Found						
UCIP Comments: 10/19/2016 Crossing appears to be in good ondition. (DWR Sutter Yard- A/Freitag)6/14/2016 crossing appears to be in good condition.4/23/2015 No issues with pipe.7/3/2014 Same as last inspection.12/23/2013 Same as last inspection.8/2/2013 New flap gate installed. No other issues with pipe.						
FIELD_STRUCT_DESC: 24-inch corrugated metal drainage pipe through the levee, 12.4 feet below the crown. Flap gate on the waterside (WS) end. Timber walkway on the landside (LS) slope to a timber walkway to pump house mounted on piles in drainage ditch. (24-inch pipe [HLM 3.99] authorized under Automatic Board Order (ABO) issued as Permit No. 11463, 1975 - Audrey Jones). [Additional Reference(s): DWR Levee Log, 2005. USACE Sacramento O&M Manual 506.2, August 1961, (HLM 3.99)].						
FS Date: 11/21/2016 12:09:38 PM						

Photo 3 of 3 : UCIP\_FA\_2017\_50814\_46850.jpg



New flap gate on WS

LM Start	3.96	Rating **	M	Issue No.	16
LM End	4.03	Issue Type +	Ma	Location *	LS
Category	Earthen Levee			GPS Latitude/Longitude	
				Start	End
Item	Vegetation			39.143741 °	39.143585 °
				-122.904705 °	-122.903482 °
DWR ID	DWR_MA0017_01_s_2016_16				
Comment Code					
V2 : Remove the wild growth other than native grasses from the levee slopes.					
Inspector Comment					
Large bushes and brambles growing on wire fence on LS toe limiting visibility and access.					

Photo 1 of 1 : FA\_2017\_MA0017\_339\_16\_20170911\_00004.jpg



5/2/2016: Remove or trim dense vegetation growing on fence to allow visibility and access to L/S toe.

<b>* Location</b> LS : Land Side    N/A : Not Applicable WS : Water Side CR : Crown		<b>** Rating</b> A : Acceptable                      N : Not Inspected/Rated M : Minimally Acceptable        C : Corrected U : Unacceptable                  A/W : Acceptable but Monitor & Maintain		<b>+ Issue Type</b> Ma : Maintenance Deficiency Ob : Design & System Obsolescence En : Enforcement
--	--	---	--	---

**Flood Control Project Maintenance  
Levee Inspections**

**Maintenance Issue Types Only, Levee Inspection Report By Mile - Fall 2017**

**Sutter Maintenance Yard Maintenance Area 0017**

Waterway	Bank	Unit Miles	Inspection Start/End	Inspector
Unit No. 01 Lake County Sutter Maintenance Yard - Middle Creek	Left	3.87	10/25/2017 10/25/2017	Bob Duffey

LM Start	4.13	Rating **	A/W	Issue No.	39
LM End	4.13	Issue Type +	Ma	Location *	
Category	Supplemental			GPS Latitude/Longitude	
				Start	End
Item	DWR UCIP LMA Responsibility			39.142287 °	39.142287 °
				-122.902436 °	-122.902436 °
DWR ID					

**Comment Code**

**Inspector Comment**

FS\_ID:50815  
DS\_ID:845  
EP\_NO: 11464  
Repair Type: No Action Needed  
Crossing Status: Found  
UCIP Comments: 10/27/2017 This structure is inspected annually under the Structure and Channel Summer Inspection (part of the Levee Inspection Program) conducted by the DWR Flood Project Integrity and Inspection Branch (FPIIB). (DWR UCIP - O. Magana)  
10/19/2016 Crossing appears to be in good condition. (DWR Sutter Yard- A Freitag) 6/14/2016 crossing appears to be in good condition. 4/23/2015 No issues with pipe. 7/3/2014 Same as last inspection. 12/23/2013 Same as last inspection. 8/2/2013 Same as last inspection.  
FIELD\_STRUCT\_DESC: [Bloody Island Pumping Plant] 1 of 2: 42-inch corrugated metal drainage pipe through the levee, 20.2 feet below the crown. Concrete headwall and discharge apron on the waterside (WS) shoulder. Three vertical pump units mounted on a reinforced concrete pump platform in drainage ditch at the landside (LS) toe. Flap gates in concrete discharge well on the LS. Combination flap and slide gate on a gravity pipe from drainage ditch into discharge well. (two 42-inch pipes [HLM 4.18] authorized under Automatic Board Order (ABO) issued as Permit No. 11464, 1975 - Lake County). [Additional Reference(s): DWR Levee Log, 2005. USACE Sacramento O&M Manual 506.2, August 1961, (HLM 4.18)].  
FS Date: 11/21/2016 12:10:29 PM

LM Start	<b>4.13</b>	Rating **	A/W	Issue No.	<b>39 (cont)</b>
LM End	<b>4.13</b>	Issue Type +	Ma	Location *	

Photo 1 of 3 : UCIP\_FA\_2017\_50815\_46853.jpg



Pumping Plant on LS shoulder.

Photo 2 of 3 : UCIP\_FA\_2017\_50815\_46852.jpg



Slide gates in CMP risers on WS shoulder.

<b>* Location</b> LS : Land Side    N/A : Not Applicable WS : Water Side CR : Crown		<b>** Rating</b> A : Acceptable M : Minimally Acceptable U : Unacceptable N : Not Inspected/Rated C : Corrected A/W : Acceptable but Monitor & Maintain		<b>+ Issue Type</b> Ma : Maintenance Deficiency Ob : Design & System Obsolescence En : Enforcement	
--	--	---	--	---	--

**Flood Control Project Maintenance  
Levee Inspections**

**Maintenance Issue Types Only, Levee Inspection Report By Mile - Fall 2017**

**Sutter Maintenance Yard Maintenance Area 0017**

Waterway	Bank	Unit Miles	Inspection Start/End	Inspector
Unit No. 01 Lake County Sutter Maintenance Yard - Middle Creek	Left	3.87	10/25/2017 10/25/2017	Bob Duffey

LM Start	4.13	Rating **	A/W	Issue No.	39 (cont)
LM End	4.13	Issue Type +	Ma	Location *	
Category	Supplemental			GPS Latitude/Longitude	
				Start	End
Item	DWR UCIP LMA Responsibility			39.142287 °	39.142287 °
				-122.902436 °	-122.902436 °
DWR ID					

**Comment Code**

**Inspector Comment**

FS\_ID:50815  
DS\_ID:845  
EP\_NO: 11464  
Repair Type: No Action Needed  
Crossing Status: Found  
UCIP Comments: 10/27/2017 This structure is inspected annually under the Structure and Channel Summer Inspection (part of the Levee Inspection Program) conducted by the DWR Flood Project Integrity and Inspection Branch (FPIIB). (DWR UCIP - O. Magana)  
10/19/2016 Crossing appears to be in good condition. (DWR Sutter Yard- A Freitag) 6/14/2016 crossing appears to be in good condition. 4/23/2015 No issues with pipe. 7/3/2014 Same as last inspection. 12/23/2013 Same as last inspection. 8/2/2013 Same as last inspection.  
FIELD\_STRUCT\_DESC: [Bloody Island Pumping Plant] 1 of 2: 42-inch corrugated metal drainage pipe through the levee, 20.2 feet below the crown. Concrete headwall and discharge apron on the waterside (WS) shoulder. Three vertical pump units mounted on a reinforced concrete pump platform in drainage ditch at the landside (LS) toe. Flap gates in concrete discharge well on the LS. Combination flap and slide gate on a gravity pipe from drainage ditch into discharge well. (two 42-inch pipes [HLM 4.18] authorized under Automatic Board Order (ABO) issued as Permit No. 11464, 1975 - Lake County). [Additional Reference(s): DWR Levee Log, 2005. USACE Sacramento O&M Manual 506.2, August 1961, (HLM 4.18)].  
FS Date: 11/21/2016 12:10:29 PM

Photo 3 of 3 : UCIP\_FA\_2017\_50815\_46851.jpg



Pumping Plant on LS shoulder.

* Location LS : Land Side    N/A : Not Applicable WS : Water Side CR : Crown		** Rating A : Acceptable M : Minimally Acceptable U : Unacceptable N : Not Inspected/Rated C : Corrected A/W : Acceptable but Monitor & Maintain		+ Issue Type Ma : Maintenance Deficiency Ob : Design & System Obsolescence En : Enforcement
---	--	--	--	--



**Flood Control Project Maintenance  
Levee Inspections**

**Maintenance Issue Types Only, Levee Inspection Report By Mile - Fall 2017**

**Sutter Maintenance Yard Maintenance Area 0017**

Waterway	Bank	Unit Miles	Inspection Start/End	Inspector
Unit No. 01 Lake County Sutter Maintenance Yard - Middle Creek	Left	3.87	10/25/2017 10/25/2017	Bob Duffey

LM Start	4.14	Rating **	A/W	Issue No.	40
LM End	4.14	Issue Type +	Ma	Location *	
Category	Supplemental			GPS Latitude/Longitude	
				Start	End
Item	DWR UCIP LMA Responsibility			39.142262 °	39.142262 °
				-122.902423 °	-122.902423 °
DWR ID					

**Comment Code**

**Inspector Comment**

FS\_ID:50816  
DS\_ID:852  
EP\_NO: 11464  
Repair Type: No Action Needed  
Crossing Status: Found  
UCIP Comments: 10/27/2017 This structure is inspected annually under the Structure and Channel Summer Inspection (part of the Levee Inspection Program) conducted by the DWR Flood Project Integrity and Inspection Branch (FPIIB). (DWR UCIP - O. Magana)  
10/19/2016 Crossing appears to be in good condition. (DWR Sutter Yard- A Freitag) 6/14/2016 crossing appears to be in good condition. 4/23/2015 No issues with pipe. 7/3/2014 Same as last inspection. 12/23/2013 Same as last inspection. 8/2/2013 Same as last inspection.  
FIELD\_STRUCT\_DESC: [Bloody Island Pumping Plant] 2 of 2: 42-inch corrugated metal drainage pipe through the levee, 14.6 feet below the crown. Concrete headwall and discharge apron on the waterside (WS) shoulder. Three vertical pump units mounted on a reinforced concrete pump platform in drainage ditch at the landside (LS) toe. Flap gates in concrete discharge well on the LS. Combination flap and slide gate on a gravity pipe from drainage ditch into discharge well. (two 42-inch pipes [HLM 4.18] authorized under Automatic Board Order (ABO) issued as Permit No. 11464, 1975 - Lake County). [Additional Reference(s): DWR Levee Log, 2005. USACE Sacramento O&M Manual 506.2, August 1961, (HLM 4.18)].  
FS Date: 11/21/2016 12:11:01 PM

LM Start	<b>4.14</b>	Rating **	A/W	Issue No.	<b>40 (cont)</b>
LM End	<b>4.14</b>	Issue Type +	Ma	Location *	

Photo 1 of 3 : UCIP\_FA\_2017\_50816\_46856.jpg



Pumping plant on LS shoulder.

Photo 2 of 3 : UCIP\_FA\_2017\_50816\_46855.jpg



Slide gate in CMP riser on WS shoulder.

<b>* Location</b> LS : Land Side    N/A : Not Applicable WS : Water Side CR : Crown		<b>** Rating</b> A : Acceptable M : Minimally Acceptable U : Unacceptable N : Not Inspected/Rated C : Corrected A/W : Acceptable but Monitor & Maintain		<b>+ Issue Type</b> Ma : Maintenance Deficiency Ob : Design & System Obsolescence En : Enforcement	
--	--	---	--	---	--



**Flood Control Project Maintenance  
Levee Inspections**

**Maintenance Issue Types Only, Levee Inspection Report By Mile - Fall 2017**

**Sutter Maintenance Yard Maintenance Area 0017**

Waterway	Bank	Unit Miles	Inspection Start/End	Inspector
Unit No. 01 Lake County Sutter Maintenance Yard - Middle Creek	Left	3.87	10/25/2017 10/25/2017	Bob Duffey

LM Start	4.14	Rating **	A/W	Issue No.	40 (cont)	
LM End	4.14	Issue Type +	Ma	Location *		
Category	Supplemental			GPS Latitude/Longitude		
				Start	End	
Item	DWR UCIP LMA Responsibility			39.142262 °	39.142262 °	
				-122.902423 °	-122.902423 °	
DWR ID						
Comment Code						
Inspector Comment						
FS_ID:50816 DS_ID:852 EP_NO: 11464 Repair Type: No Action Needed Crossing Status: Found UCIP Comments: 10/27/2017 This structure is inspected annually under the Structure and Channel Summer Inspection (part of the Levee Inspection Program) conducted by the DWR Flood Project Integrity and Inspection Branch (FPIIB). (DWR UCIP - O. Magana) 10/19/2016 Crossing appears to be in good condition. (DWR Sutter Yard- A Freitag) 6/14/2016 crossing appears to be in goioid condition. 4/23/2015 No issues with pipe. 7/3/2014 Same as last inspection. 12/23/2013 Same as last inspection. 8/2/2013 Same as last inspection. FIELD_STRUCT_DESC: [Bloody Island Pumping Plant] 2 of 2: 42-inch corrugated metal drainage pipe through the levee, 14.6 feet below the crown. Concrete headwall and discharge apron on the waterside (WS) shoulder. Three vertical pump units mounted on a reinforced concrete pump platform in drainage ditch at the landside (LS) toe. Flap gates in concrete discharge well on the LS. Combination flap and slide gate on a gravity pipe from drainage ditch into discharge well. (two 42-inch pipes [HLM 4.18] authorized under Automatic Board Order (ABO) issued as Permit No. 11464, 1975 - Lake County). [Additional Reference(s): DWR Levee Log, 2005. USACE Sacramento O&M Manual 506.2, August 1961, (HLM 4.18)]. FS Date: 11/21/2016 12:11:01 PM						

Photo 3 of 3 : UCIP\_FA\_2017\_50816\_46854.jpg



Pumping plant on LS shoulder.

<b>* Location</b> LS : Land Side    N/A : Not Applicable WS : Water Side CR : Crown	<b>** Rating</b> A : Acceptable M : Minimally Acceptable U : Unacceptable N : Not Inspected/Rated C : Corrected A/W : Acceptable but Monitor & Maintain	<b>+ Issue Type</b> Ma : Maintenance Deficiency Ob : Design & System Obsolescence En : Enforcement
--	---	---

**Flood Control Project Maintenance  
Levee Inspections**

## Maintenance Issue Types Only, Levee Inspection Report By Mile - Fall 2017

### Sutter Maintenance Yard Maintenance Area 0017

Waterway	Bank	Unit Miles	Inspection Start/End	Inspector
Unit No. 01 Lake County Sutter Maintenance Yard - Middle Creek	Left	3.87	10/25/2017 10/25/2017	Bob Duffey

LM Start	4.16	Rating **	U	Issue No.	2
LM End	7.10	Issue Type +	Ma	Location *	WS
Category	Earthen Levee			GPS Latitude/Longitude	
				Start	End
Item	Trim / Thin Trees			39.141894 °	39.120609 °
				-122.902201 °	-122.887166 °
DWR ID	DWR_MA0017_01_s _ 2012_2				
Comment Code					
T2 : Thin trees to allow visibility of the ground and room to flood fight.					
Inspector Comment					
Trees and limbs are completely obstructing visibility on crown and WS. Crown is too narrow to drive, and overgrown with weeds, brush and trees. Road follows LS toe.					

LM Start	<b>4.16</b>	Rating **	U	Issue No.	<b>2 (cont)</b>
LM End	<b>7.10</b>	Issue Type +	Ma	Location *	WS

Photo 1 of 2 : FA\_2017\_MA0017\_339\_2\_20170911\_00001.jpg



View of the trees along the waterside slope and toe.

Photo 2 of 2 : FA\_2017\_MA0017\_339\_2\_20170911\_00002.jpg



Photo taken at LM 6.41 looking west showing overgrown LS slope of levee at right and toe road at left. Note trees obstructing visibility and access at levee crown. Crown is +/- 5 feet wide, and impassable to vehicles due to vegetation, and in some places, to pedestrians.

4/19/2016

* Location LS : Land Side    N/A : Not Applicable WS : Water Side CR : Crown		** Rating A : Acceptable M : Minimally Acceptable U : Unacceptable N : Not Inspected/Rated C : Corrected A/W : Acceptable but Monitor & Maintain		+ Issue Type Ma : Maintenance Deficiency Ob : Design & System Obsolescence En : Enforcement	
---	--	--	--	--	--

**Flood Control Project Maintenance  
Levee Inspections**

**Maintenance Issue Types Only, Levee Inspection Report By Mile - Fall 2017**

**Sutter Maintenance Yard Maintenance Area 0017**

Waterway	Bank	Unit Miles	Inspection Start/End	Inspector
Unit No. 01 Lake County Sutter Maintenance Yard - Middle Creek	Left	3.87	10/25/2017 10/25/2017	Bob Duffey

LM Start	4.17	Rating **	A	Issue No.	37
LM End	5.97	Issue Type +	Ma	Location *	LS
Category	Earthen Levee			GPS Latitude/Longitude	
				Start	End
Item	Vegetation			39.141870 °	39.126123 °
				-122.902172 °	-122.882773 °
DWR ID	DWR_MA0017_01_f_2017_37				
Comment Code					
V1 : Control annual grass and weeds on the levee slopes and easements.					
Inspector Comment					
The vegetation was removed from the landside slope.					

Photo 1 of 1 : FA\_2017\_MA0017\_339\_37\_20171030\_00073.jpg



View of no vegetation on the landside slope.

LM Start	5.34	Rating **	M	Issue No.	42
LM End	5.34	Issue Type +	Ma	Location *	
Category	Supplemental			GPS Latitude/Longitude	
				Start	End
Item	DWR UCIP LMA Responsibility			39.127449 °	39.127449 °
				-122.893460 °	-122.893460 °
DWR ID					
Comment Code					
Inspector Comment					
FS_ID:50818 DS_ID:847 EP_NO: 11469 Repair Type: Non-Urgent Crossing Status: Found UCIP Comments: 10/19/2016 Sack ring still in place. (DWR Sutter Yard- A Freitag)6/14/2016 Sack ring is still built up underneath the pipes.4/23/2015 Sack ring is still built up underneath the pipes.7/3/2014 Same as last inspection.12/23/2013 Same as last inspection.8/2/2013 Same as last inspection.12/13/2012 flood fight materials-ring levees around both LS and WS slopes at pipe crossing. This may or may not be an issue. FIELD_STRUCT_DESC: 1 of 2: 16-inch steel drainage pipe through the levee, 5 feet below the crown. Drainage pumping plant on the landside (LS). Flap gate on the waterside (WS) end. (one 16-inch and one 36-inch pipes [HLM 5.43] authorized under Automatic Board Order (ABO) issued as Permit No. 11469, 1975 - RD 2070). [Additional Reference(s): DWR Levee Log, 2005. USACE Sacramento O&M Manual 506.3, August 1961, (HLM 5.43)]. FS Date: 11/21/2016 12:11:57 PM					

Photo 1 of 2 : UCIP\_FA\_2017\_50818\_46860.jpg



Pumping plant, pipes, and ring levees on LS toe.

* Location	** Rating	+ Issue Type
LS : Land Side WS : Water Side CR : Crown	A : Acceptable M : Minimally Acceptable U : Unacceptable	Ma : Maintenance Deficiency Ob : Design & System Obsolescence En : Enforcement
	N : Not Inspected/Rated C : Corrected A/W : Acceptable but Monitor & Maintain	







**Flood Control Project Maintenance  
Levee Inspections**

**Maintenance Issue Types Only, Levee Inspection Report By Mile - Fall 2017**

**Sutter Maintenance Yard Maintenance Area 0017**

Waterway	Bank	Unit Miles	Inspection Start/End	Inspector
Unit No. 01 Lake County Sutter Maintenance Yard - Middle Creek	Left	3.87	10/25/2017 10/25/2017	Bob Duffey

LM Start	5.78	Rating **	M	Issue No.	44
LM End	5.78	Issue Type +	Ma	Location *	
Category	Supplemental			GPS Latitude/Longitude	
				Start	End
Item	DWR UCIP LMA Responsibility			39.127612 °	39.127612 °
				-122.885520 °	-122.885520 °
DWR ID					

**Comment Code**

**Inspector Comment**

FS\_ID:50820  
DS\_ID:848  
EP\_NO: 11457  
Repair Type: Non-Urgent  
Crossing Status: Found  
UCIP Comments: 10/19/2016 No riser lid or slide gate wheel. (DWR Sutter Yard- AFreitag)6/14/2016 No riser lid and no wheel to operate screw gate.4/23/2015 No cover on riser and no wheel to operate gate.7/3/2014 Same as last inspection.12/23/2013 Same as last inspection.8/2/2013 Handle to operate gate was in place but still no cover on riser.12/13/2012 No cover on CMP riser and no handle for actuating gate. This may or may not be an issue.  
FIELD\_STRUCT\_DESC: 24-inch drainage pipe under patrol road and through the levee, 13.5 feet below the crown. Concrete "U" shaped headwall on the landside (LS) end. Slide gate in 36-inch corrugated metal pipe (CMP) riser on the waterside (WS) slope. Riser unit is mounted on concrete base. (24-inch pipe [HLM 5.87] authorized under Automatic Board Order (ABO) issued as Permit No. 11457, 1975 - Crawford). [Additional Reference(s): DWR Levee Log, 2005. USACE Sacramento O&M Manual 506.3, August 1961, (HLM 5.87)].  
FS Date: 11/21/2016 12:12:57 PM

LM Start	<b>5.78</b>	Rating **	M	Issue No.	<b>44 (cont)</b>
LM End	<b>5.78</b>	Issue Type +	Ma	Location *	

Photo 1 of 2 : UCIP\_FA\_2017\_50820\_46866.jpg



36-inch CMP riser and slide gate on WS slope.

Photo 2 of 2 : UCIP\_FA\_2017\_50820\_46865.jpg



Approximate location of inlet on LS toe (not visible).

* Location	** Rating	+ Issue Type
LS : Land Side WS : Water Side CR : Crown	A : Acceptable M : Minimally Acceptable U : Unacceptable	Ma : Maintenance Deficiency Ob : Design & System Obsolescence En : Enforcement
N/A : Not Applicable	N : Not Inspected/Rated C : Corrected A/W : Acceptable but Monitor & Maintain	

**Flood Control Project Maintenance  
Levee Inspections**

**Maintenance Issue Types Only, Levee Inspection Report By Mile - Fall 2017**

**Sutter Maintenance Yard Maintenance Area 0017**

Waterway	Bank	Unit Miles	Inspection Start/End	Inspector
Unit No. 01 Lake County Sutter Maintenance Yard - Middle Creek	Left	3.87	10/25/2017 10/25/2017	Bob Duffey

LM Start	5.96	Rating **	A/W	Issue No.	45
LM End	5.96	Issue Type +	Ma	Location *	
Category	Supplemental			GPS Latitude/Longitude	
				Start	End
Item	DWR UCIP LMA Responsibility			39.126322 °	39.126322 °
				-122.882764 °	-122.882764 °
DWR ID					

**Comment Code**

**Inspector Comment**

FS\_ID:50821  
DS\_ID:849  
EP\_NO: 11467  
Repair Type: No Action Needed  
Crossing Status: Found  
UCIP Comments: 10/27/2017 This structure is inspected annually under the Structure and Channel Summer Inspection (part of the Levee Inspection Program) conducted by the DWR Flood Project Integrity and Inspection Branch (FPIIB). (DWR UCIP - O. Magana)  
10/19/2016 Crossing appears to be in good condition. (DWR Sutter Yard- A Freitag) 6/14/2016 Flap gate propped open. Will make sure its closed before flood season. 4/23/2015 Flap gate propped open. Not an issue at this time. Will close it before high water season. 7/3/2014 Same as last inspection 12/23/2013 Same as last inspection. 8/2/2013 Same as last inspection.  
FIELD\_STRUCT\_DESC: [Highland Canal Diversion Weir and Drainage] 1 of 2: 54-inch corrugated metal drainage pipe through the levee 11.5 feet below the crown. Highland Canal Diversion Weir and Drainage Structure on the landside (LS). Concrete headwall on both landside (LS) and waterside (WS) toe with flap gate on the WS toe. (two 42-inch pipes [HLM 6.05] authorized under Automatic Board Order (ABO) issued as Permit No. 11467, 1975 - Modglin). [Additional Reference(s): DWR Levee Log, 2005. USACE Sacramento O&M Manual 506.3, August 1961, (HLM 6.05)].  
FS Date: 11/21/2016 12:13:32 PM

LM Start	<b>5.96</b>	Rating **	A/W	Issue No.	<b>45 (cont)</b>
LM End	<b>5.96</b>	Issue Type +	Ma	Location *	

Photo 1 of 3 : UCIP\_FA\_2017\_50821\_46869.jpg



Concrete weir/dam and channel on LS toe.

Photo 2 of 3 : UCIP\_FA\_2017\_50821\_46868.jpg



pipe and flap gate on WS toe.

<b>* Location</b> LS : Land Side WS : Water Side CR : Crown		<b>** Rating</b> A : Acceptable M : Minimally Acceptable U : Unacceptable		<b>+ Issue Type</b> Ma : Maintenance Deficiency Ob : Design & System Obsolescence En : Enforcement	
N/A : Not Applicable		N : Not Inspected/Rated C : Corrected A/W : Acceptable but Monitor & Maintain			



**Flood Control Project Maintenance  
Levee Inspections**

**Maintenance Issue Types Only, Levee Inspection Report By Mile - Fall 2017**

**Sutter Maintenance Yard Maintenance Area 0017**

Waterway	Bank	Unit Miles	Inspection Start/End	Inspector
Unit No. 01 Lake County Sutter Maintenance Yard - Middle Creek	Left	3.87	10/25/2017 10/25/2017	Bob Duffey

LM Start	5.96	Rating **	A/W	Issue No.	45 (cont)
LM End	5.96	Issue Type +	Ma	Location *	
Category	Supplemental			GPS Latitude/Longitude	
				Start	End
Item	DWR UCIP LMA Responsibility			39.126322 °	39.126322 °
				-122.882764 °	-122.882764 °
DWR ID					

Photo 3 of 3 : UCIP\_FA\_2017\_50821\_46867.jpg



Concrete headwall at inlet on LS toe.

Comment Code					
Inspector Comment					
<p>FS_ID:50821  DS_ID:849  EP_NO: 11467  Repair Type: No Action Needed  Crossing Status: Found  UCIP Comments: 10/27/2017 This structure is inspected annually under the Structure and Channel Summer Inspection (part of the Levee Inspection Program) conducted by the DWR Flood Project Integrity and Inspection Branch (FPIIB). (DWR UCIP - O. Magana)  10/19/2016 Crossing appears to be in good condition. (DWR Sutter Yard- A Freitag) 6/14/2016 Flap gate propped open. Will make sure its closed before flood season. 4/23/2015 Flap gate propped open. Not an issue at this time. Will close it before high water season. 7/3/2014 Same as last inspection 12/23/2013 Same as last inspection. 8/2/2013 Same as last inspection.  FIELD_STRUCT_DESC: [Highland Canal Diversion Weir and Drainage] 1 of 2: 54-inch corrugated metal drainage pipe through the levee 11.5 feet below the crown. Highland Canal Diversion Weir and Drainage Structure on the landside (LS). Concrete headwall on both landside (LS) and waterside (WS) toe with flap gate on the WS toe. (two 42-inch pipes [HLM 6.05] authorized under Automatic Board Order (ABO) issued as Permit No. 11467, 1975 - Modglin). [Additional Reference(s): DWR Levee Log, 2005. USACE Sacramento O&amp;M Manual 506.3, August 1961, (HLM 6.05)].  FS Date: 11/21/2016 12:13:32 PM</p>					

* Location	** Rating	+ Issue Type
LS : Land Side WS : Water Side CR : Crown	A : Acceptable M : Minimally Acceptable U : Unacceptable	Ma : Maintenance Deficiency Ob : Design & System Obsolescence En : Enforcement
N/A : Not Applicable	N : Not Inspected/Rated C : Corrected A/W : Acceptable but Monitor & Maintain	



**Flood Control Project Maintenance  
Levee Inspections**

**Maintenance Issue Types Only, Levee Inspection Report By Mile - Fall 2017**

**Sutter Maintenance Yard Maintenance Area 0017**

Waterway	Bank	Unit Miles	Inspection Start/End	Inspector
Unit No. 01 Lake County Sutter Maintenance Yard - Middle Creek	Left	3.87	10/25/2017 10/25/2017	Bob Duffey

LM Start	5.96	Rating **	A/W	Issue No.	46
LM End	5.96	Issue Type +	Ma	Location *	
Category	Supplemental			GPS Latitude/Longitude	
				Start	End
Item	DWR UCIP LMA Responsibility			39.126298 °	39.126298 °
				-122.882756 °	-122.882756 °
DWR ID					

**Comment Code**

**Inspector Comment**

FS\_ID:50822  
DS\_ID:854  
EP\_NO: 11467  
Repair Type: No Action Needed  
Crossing Status: Found  
UCIP Comments: 10/27/2017 This structure is inspected annually under the Structure and Channel Summer Inspection (part of the Levee Inspection Program) conducted by the DWR Flood Project Integrity and Inspection Branch (FPIIB). (DWR UCIP - O. Magana)  
10/19/2016 Crossing appears to be in good condition. (DWR Sutter Yard- A Freitag) 6/14/2016 Flap gate propped open. Will make sure its closed before flood season. 4/23/2015 Flap gate propped open. Not an issue at this time. Will close it before high water season. 7/3/2014 Same as last inspection. 12/23/2013 Same as last inspection. 8/2/2013 Same as last inspection.  
FIELD\_STRUCT\_DESC: [Highland Canal Diversion Weir and Drainage] 2 of 2: 54-inch corrugated metal drainage pipe through the levee, 11.5 feet below the crown. Highland Canal Diversion Weir and Drainage Structure on the landside (LS). Concrete headwall on both landside (LS) and waterside (WS) toe with flap gate on the WS toe. (two 42-inch pipes [HLM 6.05] authorized under Automatic Board Order (ABO) issued as Permit No. 11467, 1975 - Modglin). [Additional Reference(s): DWR Levee Log, 2005. USACE Sacramento O&M Manual 506.3, August 1961, (HLM 6.05)].  
FS Date: 11/21/2016 12:14:05 PM

LM Start	<b>5.96</b>	Rating **	A/W	Issue No.	<b>46 (cont)</b>
LM End	<b>5.96</b>	Issue Type +	Ma	Location *	

Photo 1 of 3 : UCIP\_FA\_2017\_50822\_46872.jpg



Concrete dam/weir and channel on LS toe.

Photo 2 of 3 : UCIP\_FA\_2017\_50822\_46871.jpg



Pipe and flap gate on WS toe.

* Location LS : Land Side    N/A : Not Applicable WS : Water Side CR : Crown		** Rating A : Acceptable M : Minimally Acceptable U : Unacceptable N : Not Inspected/Rated C : Corrected A/W : Acceptable but Monitor & Maintain		+ Issue Type Ma : Maintenance Deficiency Ob : Design & System Obsolescence En : Enforcement	
---	--	--	--	--	--

**Flood Control Project Maintenance  
Levee Inspections**

**Maintenance Issue Types Only, Levee Inspection Report By Mile - Fall 2017**

**Sutter Maintenance Yard Maintenance Area 0017**

Waterway	Bank	Unit Miles	Inspection Start/End	Inspector
Unit No. 01 Lake County Sutter Maintenance Yard - Middle Creek	Left	3.87	10/25/2017 10/25/2017	Bob Duffey

LM Start	5.96	Rating **	A/W	Issue No.	46 (cont)
LM End	5.96	Issue Type +	Ma	Location *	
Category	Supplemental			GPS Latitude/Longitude	
				Start	End
Item	DWR UCIP LMA Responsibility			39.126298 °	39.126298 °
				-122.882756 °	-122.882756 °
DWR ID					

**Comment Code**

**Inspector Comment**

FS\_ID:50822  
DS\_ID:854  
EP\_NO: 11467  
Repair Type: No Action Needed  
Crossing Status: Found  
UCIP Comments: 10/27/2017 This structure is inspected annually under the Structure and Channel Summer Inspection (part of the Levee Inspection Program) conducted by the DWR Flood Project Integrity and Inspection Branch (FPIIB). (DWR UCIP - O. Magana)  
10/19/2016 Crossing appears to be in good condition. (DWR Sutter Yard- A Freitag) 6/14/2016 Flap gate propped open. Will make sure its closed before flood season. 4/23/2015 Flap gate propped open. Not an issue at this time. Will close it before high water season. 7/3/2014 Same as last inspection. 12/23/2013 Same as last inspection. 8/2/2013 Same as last inspection.  
FIELD\_STRUCT\_DESC: [Highland Canal Diversion Weir and Drainage] 2 of 2: 54-inch corrugated metal drainage pipe through the levee, 11.5 feet below the crown. Highland Canal Diversion Weir and Drainage Structure on the landside (LS). Concrete headwall on both landside (LS) and waterside (WS) toe with flap gate on the WS toe. (two 42-inch pipes [HLM 6.05] authorized under Automatic Board Order (ABO) issued as Permit No. 11467, 1975 - Modglin). [Additional Reference(s): DWR Levee Log, 2005. USACE Sacramento O&M Manual 506.3, August 1961, (HLM 6.05)].  
FS Date: 11/21/2016 12:14:05 PM

Photo 3 of 3 : UCIP\_FA\_2017\_50822\_46870.jpg



Concrete headwall on LS toe.

<b>* Location</b> LS : Land Side    N/A : Not Applicable WS : Water Side CR : Crown		<b>** Rating</b> A : Acceptable                      N : Not Inspected/Rated M : Minimally Acceptable        C : Corrected U : Unacceptable                  A/W : Acceptable but Monitor & Maintain		<b>+ Issue Type</b> Ma : Maintenance Deficiency Ob : Design & System Obsolescence En : Enforcement
--	--	---	--	---

**Flood Control Project Maintenance  
Levee Inspections**

**Maintenance Issue Types Only, Levee Inspection Report By Mile - Fall 2017**

**Sutter Maintenance Yard Maintenance Area 0017**

Waterway	Bank	Unit Miles	Inspection Start/End	Inspector
Unit No. 01 Lake County Sutter Maintenance Yard - Middle Creek	Left	3.87	10/25/2017 10/25/2017	Bob Duffey

LM Start	6.00	Rating **	U	Issue No.	50
LM End	6.00	Issue Type +	Ma	Location *	
Category	Supplemental			GPS Latitude/Longitude	
				Start	End
Item	DWR UCIP LMA Responsibility			39.126027 °	39.126027 °
				-122.883371 °	-122.883371 °
DWR ID					

**Comment Code**

**Inspector Comment**

FS\_ID:50826  
DS\_ID:850  
EP\_NO: 11467  
Repair Type: Urgent  
Crossing Status: Found  
UCIP Comments: 10/19/2016 WS erosion still present. (DWR Sutter Yard - AFreitag)6/14/2016 WS erosion is still present. (DWR Sutter Yard - afreitag)4/23/2015 Same as last inspection. (DWR Sutter Yard - afreitag)7/3/2014 Same as last inspection. (DWR Sutter Yard - afreitag)12/23/2013 Same as last inspection. (DWR Sutter Yard - afreitag)8/2/2013 Same as last inspection. (DWR Sutter Yard - afreitag)12/13/2012 This pipe and appurtances do not match what was described in the permit (PN: 11467). Does not appear to be in compliance with board regulations. (DWR UCIP - wwylie)  
FIELD\_STRUCT\_DESC: 12-inch steel drainage pipe through the levee, 2 feet below the crown. Butterfly valve on the landside (LS) shoulder. Pump and electrical panel, along with multiple valves and appurtenances, on the LS shoulder. (12-inch pipe [HLM 6.11] authorized under Automatic Board Order (ABO) issued as Permit No. 11467, 1975 - B. F. Modglin). [Additional Reference(s): DWR Levee Log, 2005. USACE Sacramento O&M Manual 506.3, 1967, (HLM 6.11)].  
FS Date: 11/21/2016 12:16:25 PM

LM Start	<b>6.00</b>	Rating **	U	Issue No.	<b>50 (cont)</b>
LM End	<b>6.00</b>	Issue Type +	Ma	Location *	

Photo 1 of 3 : UCIP\_FA\_2017\_50826\_46882.jpg



12-inch pipe and appurtances on WS shoulder.

Photo 2 of 3 : UCIP\_FA\_2017\_50826\_46881.jpg



12-inch pipe and appurtances on WS shoulder.

<b>* Location</b> LS : Land Side    N/A : Not Applicable WS : Water Side CR : Crown		<b>** Rating</b> A : Acceptable M : Minimally Acceptable U : Unacceptable		N : Not Inspected/Rated C : Corrected A/W : Acceptable but Monitor & Maintain		<b>+ Issue Type</b> Ma : Maintenance Deficiency Ob : Design & System Obsolescence En : Enforcement	
--	--	--	--	---	--	---	--







**Flood Control Project Maintenance  
Levee Inspections**

**Maintenance Issue Types Only, Levee Inspection Report By Mile - Fall 2017**

**Sutter Maintenance Yard Maintenance Area 0017**

Waterway	Bank	Unit Miles	Inspection Start/End	Inspector
Unit No. 01 Lake County Sutter Maintenance Yard - Middle Creek	Left	3.87	10/25/2017 10/25/2017	Bob Duffey

LM Start	7.16	Rating **	M	Issue No.	51
LM End	7.16	Issue Type +	Ma	Location *	
Category	Supplemental			GPS Latitude/Longitude	
				Start	End
Item	DWR UCIP LMA Responsibility			39.120083 °	39.120083 °
				-122.886502 °	-122.886502 °
DWR ID					

**Comment Code**

**Inspector Comment**

FS\_ID:50827  
DS\_ID:851  
EP\_NO: 11467  
Repair Type: Non-Urgent  
Crossing Status: Found  
UCIP Comments: 10/19/2016 Abandoned- should be done so properly. (DWR Sutter Yard- AFreitag)6/14/2016 Abandoned crossing.4/23/2015 Same as last inspection. Pipe still needs to be properly abandoned.7/3/2014 Same as last inspection.12/23/2013 Same as last inspection.8/2/2013 Same as last inspection.12/13/2012 Pipe should be properly abandoned.  
FIELD\_STRUCT\_DESC: \*ABANDONED\* 1 of 2: 16-inch steel drainage pipe through the levee, 8 feet below the crown. Drainage pumping plant on the landside (LS). Flap gate on the waterside (WS) end. Steel plate welded on end of pipe at LS toe. (one 16-inch and one 24-inch pipes [HLM 7.79] authorized under Automatic Board Order (ABO) issued as Permit No. 11467, 1975 - Modglin). [Additional Reference(s): DWR Levee Log, 2005. USACE Sacramento O&M Manual 506.3, August 1961, (HLM 7.19)].  
FS Date: 11/21/2016 12:16:52 PM

LM Start	<b>7.16</b>	Rating **	M	Issue No.	<b>51 (cont)</b>
LM End	<b>7.16</b>	Issue Type +	Ma	Location *	

Photo 1 of 2 : UCIP\_FA\_2017\_50827\_46884.jpg



Pumping plant in shed on LS at drainage ditch.

Photo 2 of 2 : UCIP\_FA\_2017\_50827\_46883.jpg



Steel plate welded over end of pipe at LS toe.

<b>* Location</b> LS : Land Side N/A : Not Applicable WS : Water Side CR : Crown		<b>** Rating</b> A : Acceptable M : Minimally Acceptable U : Unacceptable		N : Not Inspected/Rated C : Corrected A/W : Acceptable but Monitor & Maintain		<b>+ Issue Type</b> Ma : Maintenance Deficiency Ob : Design & System Obsolescence En : Enforcement	
---	--	--	--	---	--	---	--

**Flood Control Project Maintenance  
Levee Inspections**

**Maintenance Issue Types Only, Levee Inspection Report By Mile - Fall 2017**

**Sutter Maintenance Yard Maintenance Area 0017**

Waterway	Bank	Unit Miles	Inspection Start/End	Inspector
Unit No. 01 Lake County Sutter Maintenance Yard - Middle Creek	Left	3.87	10/25/2017 10/25/2017	Bob Duffey

LM Start	7.16	Rating **	A/W	Issue No.	52
LM End	7.16	Issue Type +	Ma	Location *	
Category	Supplemental			GPS Latitude/Longitude	
				Start	End
Item	DWR UCIP LMA Responsibility			39.120069 °	39.120069 °
				-122.886484 °	-122.886484 °
DWR ID					

**Comment Code**

**Inspector Comment**

FS\_ID:50828  
DS\_ID:855  
EP\_NO: 11467  
Repair Type: No Action Needed  
Crossing Status: Found  
UCIP Comments: 10/19/2016 Crossing appears to be in good condition. (DWR Sutter Yard- A Freitag) 6/14/2016 Crossing appears to be in good condition. 4/23/2015 No issues seen with pipe. 7/3/2014 Same as last inspection. 8/2/2013 Same as last inspection. 12/23/2013 Same as last inspection.  
FIELD\_STRUCT\_DESC: 2 of 2: 24-inch steel drainage pipe through the levee, 8 feet below the crown.  
Drainage pumping plant on the landside (LS). Flap gate on the waterside (WS) end. (one 16-inch and one 24-inch pipes [HLM 7.79] authorized under Automatic Board Order (ABO) issued as Permit No. 11467, 1975 - Modglin). [Additional Reference(s): DWR Levee Log, 2005. USACE Sacramento O&M Manual 506.3, August 1961, (HLM 7.19)].  
FS Date: 11/21/2016 12:17:36 PM

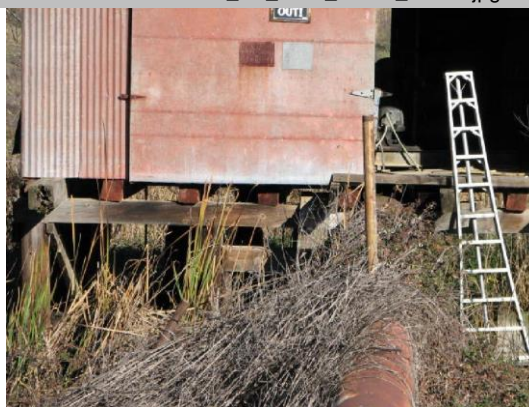
LM Start	<b>7.16</b>	Rating **	A/W	Issue No.	<b>52 (cont)</b>
LM End	<b>7.16</b>	Issue Type +	Ma	Location *	

Photo 1 of 2 : UCIP\_FA\_2017\_50828\_46886.jpg



24-inch steel pipe and pump house on LS.

Photo 2 of 2 : UCIP\_FA\_2017\_50828\_46885.jpg



Air vent on pipe at LS pumphouse.

<b>* Location</b> LS : Land Side    N/A : Not Applicable WS : Water Side CR : Crown		<b>** Rating</b> A : Acceptable                      N : Not Inspected/Rated M : Minimally Acceptable        C : Corrected U : Unacceptable                  A/W : Acceptable but Monitor & Maintain		<b>+ Issue Type</b> Ma : Maintenance Deficiency Ob : Design & System Obsolescence En : Enforcement
--	--	---	--	---