

**Flood Control Project Maintenance
Levee Inspections**

Maintenance Issue Types Only, Levee Inspection Report By Mile - Fall 2017

Sutter Maintenance Yard Maintenance Area 0012

Waterway	Bank	Unit Miles	Inspection Start/End	Inspector
Unit No. 01 Colusa Drain	Left	11.06	09/13/2017 09/13/2017	Bob Duffey

LM Start		Rating **	A	Issue No.	12
LM End		Issue Type +	Ma	Location *	N/A
Category	Earthen Levee		GPS Latitude/Longitude		
			Start	End	
Item	Emergency Supplies & Equipment			°	°
				°	°
DWR ID	DWR_MA0012_01_s _ 2013_12				
Comment Code					
Inspector Comment					
The LMA has adequate flood fight supplies and equipment.					

No Photos

LM Start		Rating **	A	Issue No.	13
LM End		Issue Type +	Ma	Location *	N/A
Category	Earthen Levee		GPS Latitude/Longitude		
			Start	End	
Item	Operations & Maintenance Manuals			°	°
				°	°
DWR ID	DWR_MA0012_01_s _ 2013_13				
Comment Code					
Inspector Comment					
The LMA has the O&M manuals.					

No Photos

* Location LS : Land Side N/A : Not Applicable WS : Water Side CR : Crown	** Rating A : Acceptable M : Minimally Acceptable U : Unacceptable	N : Not Inspected/Rated C : Corrected A/W : Acceptable but Monitor & Maintain	+ Issue Type Ma : Maintenance Deficiency Ob : Design & System Obsolescence En : Enforcement
--	--	---	---

**Flood Control Project Maintenance
Levee Inspections**

Maintenance Issue Types Only, Levee Inspection Report By Mile - Fall 2017

Sutter Maintenance Yard Maintenance Area 0012

Waterway	Bank	Unit Miles	Inspection Start/End	Inspector
Unit No. 01 Colusa Drain	Left	11.06	09/13/2017 09/13/2017	Bob Duffey

LM Start		Rating **	A	Issue No.	14
LM End		Issue Type +	Ma	Location *	N/A
Category	Earthen Levee		GPS Latitude/Longitude		
			Start	End	
Item	Flood Preparedness & Training			°	°
				°	°
DWR ID	DWR_MA0012_01_s_2013_14				
Comment Code					
Inspector Comment					
The LMA completed flood fight training in 2016.					

No Photos

*** Location**
LS : Land Side N/A : Not Applicable
WS : Water Side
CR : Crown

**** Rating**
A : Acceptable N : Not Inspected/Rated
M : Minimally Acceptable C : Corrected
U : Unacceptable A/W : Acceptable but Monitor & Maintain

+ Issue Type
Ma : Maintenance Deficiency
Ob : Design & System Obsolescence
En : Enforcement

**Flood Control Project Maintenance
Levee Inspections**

Maintenance Issue Types Only, Levee Inspection Report By Mile - Fall 2017

Sutter Maintenance Yard Maintenance Area 0012

Waterway	Bank	Unit Miles	Inspection Start/End	Inspector
Unit No. 01 Colusa Drain	Left	11.06	09/13/2017 09/13/2017	Bob Duffey

LM Start	0.49	Rating **	M	Issue No.	54
LM End	0.49	Issue Type +	Ma	Location *	
Category	Supplemental			GPS Latitude/Longitude	
				Start	End
Item	DWR UCIP LMA Responsibility			39.039413 °	39.039413 °
				-121.997766 °	-121.997766 °
DWR ID					

Comment Code

Inspector Comment

FS_ID:51779
DS_ID:17146
EP_NO: 9382
Repair Type: Non-Urgent
Crossing Status: Found
UCIP Comments: 5/2/2017 WS is in good condition. LS inlet is more than 50% full of sediment. Pipe needs to be cleaned internally. (DWR Sutter Yard- A Freitag)10/17/2016 Minor sediment blocking the WS flap gate from opening. LS inlet still mostly full of sediment.(DWR Sutter Yard- A Freitag)9/29/2016 Crossing has been downgraded from Urgent to Non-Urgent WS flap gate is closed for flood season. Need to coordinate with owner to remove sediment blocking WS flap gate. (DWR UCIP - omagana)5/31/2016 WS flap gate is blocked from opening by sediment. LS inlet is over 50% full of sediment. (DWR Sutter Yard - a Freitag)5/4/2015 WS flap gate is blocked by sediment and unable to open. LS inlet is about 50% plugged with soil. Needs to be cleaned. (DWR Sutter Yard - a Freitag)6/17/2014 Same as last inspection. (DWR Sutter Yard - a Freitag)12/16/2013 Sediment against flapgate has been cleared and it can now function properly. (DWR Sutter Yard - a Freitag)7/16/2013 Sediment is built up against WS flapgate preventing it from opening. (DWR Sutter Yard - a Freitag)10/11/2012 Pipe is partially filled with soil. (DWR UCIP - wwylyie)
FIELD_STRUCT_DESC: 24-inch corrugated metal drainage pipe through the levee, 13 feet below the crown. Flap gate, concrete headwall, and grouted cobble spillway on the waterside (WS). Concrete headwall on the landside (LS). (24-inch pipe authorized under Automatic Board Order (ABO) issued as Permit No. 9385, 1974 - Jackson S. King). [Additional Reference(s): DWR Levee Log references ABO 9382, 2005. USACE Sacramento O&M Manual 132, October 1959, (HLM 0.49, Drawing No. 50-4-3081)].
FS Date: 5/2/2017 1:38:42 PM

Photo 1 of 3 : UCIP_FA_2017_51779_68973.jpg



Intake at LS toe.

* Location	** Rating	+ Issue Type
LS : Land Side WS : Water Side CR : Crown	A : Acceptable M : Minimally Acceptable U : Unacceptable	Ma : Maintenance Deficiency Ob : Design & System Obsolescence En : Enforcement
	N : Not Inspected/Rated C : Corrected A/W : Acceptable but Monitor & Maintain	

**Flood Control Project Maintenance
Levee Inspections**

Maintenance Issue Types Only, Levee Inspection Report By Mile - Fall 2017

Sutter Maintenance Yard Maintenance Area 0012

Waterway	Bank	Unit Miles	Inspection Start/End	Inspector
Unit No. 01 Colusa Drain	Left	11.06	09/13/2017 09/13/2017	Bob Duffey

LM Start	0.49	Rating **	M	Issue No.	54 (cont)
LM End	0.49	Issue Type +	Ma	Location *	
Category	Supplemental			GPS Latitude/Longitude	
				Start	End
Item	DWR UCIP LMA Responsibility			39.039413 °	39.039413 °
				-121.997766 °	-121.997766 °
DWR ID					

Comment Code

Inspector Comment

FS_ID:51779
DS_ID:17146
EP_NO: 9382
Repair Type: Non-Urgent
Crossing Status: Found
UCIP Comments: 5/2/2017 WS is in good condition. LS inlet is more than 50% full of sediment. Pipe needs to be cleaned internally. (DWR Sutter Yard- AFreitag)10/17/2016 Minor sediment blocking the WS flap gate from opening. LS inlet still mostly full of sediment.(DWR Sutter Yard- AFreitag)9/29/2016 Crossing has been downgraded from Urgent to Non-Urgent WS flap gate is closed for flood season. Need to coordinate with owner to remove sediment blocking WS flap gate. (DWR UCIP - omagana)5/31/2016 WS flap gate is blocked from opening by sediment. LS inlet is over 50% full of sediment. (DWR Sutter Yard - afreitag)5/4/2015 WS flap gate is blocked by sediment and unable to open. LS inlet is about 50% plugged with soil. Needs to be cleaned. (DWR Sutter Yard - afreitag)6/17/2014 Same as last inspection. (DWR Sutter Yard - afreitag)12/16/2013 Sediment against flapgate has been cleared and it can now function properly. (DWR Sutter Yard - afreitag)7/16/2013 Sediment is built up against WS flapgate preventing it from opening. (DWR Sutter Yard - afreitag)10/11/2012 Pipe is partially filled with soil. (DWR UCIP - wwylie)
FIELD_STRUCT_DESC: 24-inch corrugated metal drainage pipe through the levee, 13 feet below the crown. Flap gate, concrete headwall, and grouted cobble spillway on the waterside (WS). Concrete headwall on the landside (LS). (24-inch pipe authorized under Automatic Board Order (ABO) issued as Permit No. 9385, 1974 - Jackson S. King). [Additional Reference(s): DWR Levee Log references ABO 9382, 2005. USACE Sacramento O&M Manual 132, October 1959, (HLM 0.49, Drawing No. 50-4-3081)].
FS Date: 5/2/2017 1:38:42 PM

Photo 2 of 3 : UCIP_FA_2017_51779_68972.jpg



Outlet at WS toe.

* Location	** Rating	+ Issue Type
LS : Land Side WS : Water Side CR : Crown	A : Acceptable M : Minimally Acceptable U : Unacceptable	Ma : Maintenance Deficiency Ob : Design & System Obsolescence En : Enforcement
	N : Not Inspected/Rated C : Corrected A/W : Acceptable but Monitor & Maintain	

**Flood Control Project Maintenance
Levee Inspections**

Maintenance Issue Types Only, Levee Inspection Report By Mile - Fall 2017

Sutter Maintenance Yard Maintenance Area 0012

Waterway	Bank	Unit Miles	Inspection Start/End	Inspector
Unit No. 01 Colusa Drain	Left	11.06	09/13/2017 09/13/2017	Bob Duffey

LM Start	0.49	Rating **	M	Issue No.	54 (cont)
LM End	0.49	Issue Type +	Ma	Location *	
Category	Supplemental			GPS Latitude/Longitude	
				Start	End
Item	DWR UCIP LMA Responsibility			39.039413 °	39.039413 °
				-121.997766 °	-121.997766 °
DWR ID					

Comment Code

Inspector Comment

FS_ID:51779
DS_ID:17146
EP_NO: 9382
Repair Type: Non-Urgent
Crossing Status: Found
UCIP Comments: 5/2/2017 WS is in good condition. LS inlet is more than 50% full of sediment. Pipe needs to be cleaned internally. (DWR Sutter Yard- AFreitag)10/17/2016 Minor sediment blocking the WS flap gate from opening. LS inlet still mostly full of sediment.(DWR Sutter Yard- AFreitag)9/29/2016 Crossing has been downgraded from Urgent to Non-Urgent WS flap gate is closed for flood season. Need to coordinate with owner to remove sediment blocking WS flap gate. (DWR UCIP - omagana)5/31/2016 WS flap gate is blocked from opening by sediment. LS inlet is over 50% full of sediment. (DWR Sutter Yard - afreitag)5/4/2015 WS flap gate is blocked by sediment and unable to open. LS inlet is about 50% plugged with soil. Needs to be cleaned. (DWR Sutter Yard - afreitag)6/17/2014 Same as last inspection. (DWR Sutter Yard - afreitag)12/16/2013 Sediment against flapgate has been cleared and it can now function properly. (DWR Sutter Yard - afreitag)7/16/2013 Sediment is built up against WS flapgate preventing it from opening. (DWR Sutter Yard - afreitag)10/11/2012 Pipe is partially filled with soil. (DWR UCIP - wwylie)
FIELD_STRUCT_DESC: 24-inch corrugated metal drainage pipe through the levee, 13 feet below the crown. Flap gate, concrete headwall, and grouted cobble spillway on the waterside (WS). Concrete headwall on the landside (LS). (24-inch pipe authorized under Automatic Board Order (ABO) issued as Permit No. 9385, 1974 - Jackson S. King). [Additional Reference(s): DWR Levee Log references ABO 9382, 2005. USACE Sacramento O&M Manual 132, October 1959, (HLM 0.49, Drawing No. 50-4-3081)].
FS Date: 5/2/2017 1:38:42 PM

Photo 3 of 3 : UCIP_FA_2017_51779_68971.jpg



Inlet and concrete headwall on LS toe.

* Location	** Rating	+ Issue Type
LS : Land Side WS : Water Side CR : Crown	A : Acceptable M : Minimally Acceptable U : Unacceptable	Ma : Maintenance Deficiency Ob : Design & System Obsolescence En : Enforcement
	N : Not Inspected/Rated C : Corrected A/W : Acceptable but Monitor & Maintain	

**Flood Control Project Maintenance
Levee Inspections**

Maintenance Issue Types Only, Levee Inspection Report By Mile - Fall 2017

Sutter Maintenance Yard Maintenance Area 0012

Waterway	Bank	Unit Miles	Inspection Start/End	Inspector
Unit No. 01 Colusa Drain	Left	11.06	09/13/2017 09/13/2017	Bob Duffey

LM Start	1.38	Rating **	A/W	Issue No.	55
LM End	1.38	Issue Type +	Ma	Location *	
Category	Supplemental			GPS Latitude/Longitude	
				Start	End
Item	DWR UCIP LMA Responsibility			39.051280 °	39.051280 °
				-122.002981 °	-122.002981 °
DWR ID					

Comment Code

Inspector Comment

FS_ID:51780
DS_ID:17147
EP_NO: 9382
Repair Type: No Action Needed
Crossing Status: Found
UCIP Comments: 5/2/2017 Crossing appears to be in good condition.
(DWR Sutter Yard- A Freitag)10/17/2016 Crossing appears to be in good condition. This is a gravity for the LS.(DWR Sutter Yard- A Freitag)5/31/2016 Crossing appears to be in good condition.5/4/2015 Crossing is in good condition. No issues.6/17/2014 Same as last inspection.12/16/2013 Same as last inspection.7/16/2013 Same as last inspection.
FIELD_STRUCT_DESC: 24-inch corrugated metal drainage pipe through the levee, 13 feet below the crown. Flap gate, concrete headwall, and grouted cobble spillway on the waterside (WS). Concrete headwall on the landside (LS). (24-inch pipe [HLM 1.40] authorized under Automatic Board Order (ABO) issued as Permit No. 9382, 1974 - Olen C. Bober). [Additional Reference(s): DWR Levee Log, 2005. USACE Sacramento O&M Manual 132, October 1959, (HLM 1.4)].
FS Date: 5/2/2017 1:40:20 PM

LM Start	1.38	Rating **	A/W	Issue No.	55 (cont)
LM End	1.38	Issue Type +	Ma	Location *	

Photo 1 of 3 : UCIP_FA_2017_51780_68977.jpg



Intake on LS toe.

Photo 2 of 3 : UCIP_FA_2017_51780_68976.jpg



Outlet at WS toe.

* Location	** Rating	+ Issue Type
LS : Land Side WS : Water Side CR : Crown	A : Acceptable M : Minimally Acceptable U : Unacceptable	Ma : Maintenance Deficiency Ob : Design & System Obsolescence En : Enforcement
	N : Not Inspected/Rated C : Corrected A/W : Acceptable but Monitor & Maintain	

**Flood Control Project Maintenance
Levee Inspections**

Maintenance Issue Types Only, Levee Inspection Report By Mile - Fall 2017

Sutter Maintenance Yard Maintenance Area 0012

Waterway	Bank	Unit Miles	Inspection Start/End	Inspector
Unit No. 01 Colusa Drain	Left	11.06	09/13/2017 09/13/2017	Bob Duffey

LM Start	1.38	Rating **	A/W	Issue No.	55 (cont)
LM End	1.38	Issue Type +	Ma	Location *	
Category	Supplemental			GPS Latitude/Longitude	
				Start	End
Item	DWR UCIP LMA Responsibility			39.051280 °	39.051280 °
				-122.002981 °	-122.002981 °
DWR ID					

Comment Code

Inspector Comment

FS_ID:51780
DS_ID:17147
EP_NO: 9382
Repair Type: No Action Needed
Crossing Status: Found
UCIP Comments: 5/2/2017 Crossing appears to be in good condition.
(DWR Sutter Yard- AFreitag)10/17/2016 Crossing appears to be in good condition. This is a gravity for the LS.(DWR Sutter Yard- AFreitag)5/31/2016 Crossing appears to be in good condition.5/4/2015 Crossing is in good condition. No issues.6/17/2014 Same as last inspection.12/16/2013 Same as last inspection.7/16/2013 Same as last inspection.
FIELD_STRUCT_DESC: 24-inch corrugated metal drainage pipe through the levee, 13 feet below the crown. Flap gate, concrete headwall, and grouted cobble spillway on the waterside (WS). Concrete headwall on the landside (LS). (24-inch pipe [HLM 1.40] authorized under Automatic Board Order (ABO) issued as Permit No. 9382, 1974 - Olen C. Bober). [Additional Reference(s): DWR Levee Log, 2005. USACE Sacramento O&M Manual 132, October 1959, (HLM 1.4)].
FS Date: 5/2/2017 1:40:20 PM

Photo 3 of 3 : UCIP_FA_2017_51780_68975.jpg



Concrete U shaped headwall on LS toe.

* Location LS : Land Side N/A : Not Applicable WS : Water Side CR : Crown		** Rating A : Acceptable M : Minimally Acceptable U : Unacceptable N : Not Inspected/Rated C : Corrected A/W : Acceptable but Monitor & Maintain		+ Issue Type Ma : Maintenance Deficiency Ob : Design & System Obsolescence En : Enforcement	
--	--	---	--	---	--

**Flood Control Project Maintenance
Levee Inspections**

Maintenance Issue Types Only, Levee Inspection Report By Mile - Fall 2017

Sutter Maintenance Yard Maintenance Area 0012

Waterway	Bank	Unit Miles	Inspection Start/End	Inspector
Unit No. 01 Colusa Drain	Left	11.06	09/13/2017 09/13/2017	Bob Duffey

LM Start	1.69	Rating **	M	Issue No.	57
LM End	1.69	Issue Type +	Ma	Location *	
Category	Supplemental			GPS Latitude/Longitude	
				Start	End
Item	DWR UCIP LMA Responsibility			39.055711 °	39.055711 °
				-122.003252 °	-122.003252 °
DWR ID					

Comment Code

Inspector Comment

FS_ID:51782
DS_ID:17149
EP_NO: 9382
Repair Type: Non-Urgent
Crossing Status: Found
UCIP Comments: 5/2/2017 WS flapgate buried by sediment. Needs to be dug out. (DWR Sutter Yard- A Freitag)10/17/2016 Crossing appears to be in good condition. This is a gravity drain for the LS. (DWR Sutter Yard- A Freitag)5/31/2016 LS inlets was partially plugged. WS flapgate was clear of sediment and able to operate properly.5/4/2015 WS flapgate is blocked by sediment and unable to open. LS inlet is plugged by silt and wood chippings. Needs to be cleaned.6/17/2014 Flap gate was cleaned out and is fully closed. LS inlet still partially full of soil.12/16/2013 Same as last inspection. WS flapgate still needs to be cleaned out and shut.7/16/2013 Same as last inspection. Make sure flapgate is closed before highwater season.10/11/2012 Inlet on LS filled partially with soil. Outlet blocked with soil and the flap gate wont close.
FIELD_STRUCT_DESC: 24-inch corrugated metal drainage pipe through the levee, 13 feet below the crown. Flap gate, concrete headwall, and grouted cobble spillway on the waterside (WS). Concrete headwall on the landside (LS). (24-inch pipe [HLM 1.72] authorized under Automatic Board Order (ABO) issued as Permit No. 9382, 1974 - Olen C. Bober). [Additional Reference(s): DWR Levee Log, 2005. USACE Sacramento O&M Manual 132, October 1959, (HLM 1.72)].
FS Date: 5/2/2017 1:50:52 PM

LM Start	1.69	Rating **	M	Issue No.	57 (cont)
LM End	1.69	Issue Type +	Ma	Location *	

Photo 1 of 3 : UCIP_FA_2017_51782_68984.jpg



Outlet on WS toe.

Photo 2 of 3 : UCIP_FA_2017_51782_68983.jpg



Inlet on LS toe.

* Location	** Rating	+ Issue Type
LS : Land Side WS : Water Side CR : Crown	A : Acceptable M : Minimally Acceptable U : Unacceptable	Ma : Maintenance Deficiency Ob : Design & System Obsolescence En : Enforcement
	N : Not Inspected/Rated C : Corrected A/W : Acceptable but Monitor & Maintain	

**Flood Control Project Maintenance
Levee Inspections**

Maintenance Issue Types Only, Levee Inspection Report By Mile - Fall 2017

Sutter Maintenance Yard Maintenance Area 0012

Waterway	Bank	Unit Miles	Inspection Start/End	Inspector
Unit No. 01 Colusa Drain	Left	11.06	09/13/2017 09/13/2017	Bob Duffey

LM Start	1.77	Rating **	A/W	Issue No.	58
LM End	1.77	Issue Type +	Ma	Location *	
Category	Supplemental		GPS Latitude/Longitude		
			Start	End	
Item	DWR UCIP LMA Responsibility		39.056847 °	39.056847 °	
			-122.003288 °	-122.003288 °	
DWR ID					

Comment Code

Inspector Comment

FS_ID:51785
DS_ID:17150
EP_NO: 9387
Repair Type: No Action Needed
Crossing Status: Found
UCIP Comments: 5/2/2017 Crossing appears to be in good condition. (DWR Sutter Yard- A Freitag)10/17/2016 Crossing appears to be in good condition. (DWR Sutter Yard- A Freitag)5/31/2016 Crossing appears to be in good condition. Attached photo showing location of LS inlet.5/4/2015 WS flapgate mostly underwater but could tell it was blocked open by something. LS inlet is located about 1/4 mile north along the side of the roadway.6/17/2014 Same as last inspection.12/16/2013 Pipe was flowing water and flap gate was being pushed open. Cannot verify if it will close all the way.7/16/2013 Same as last inspection. Was told inlet is about 1/4 mile down road way next to house. Will try to get coordinates for inlet.10/11/2012 No inlet could be located on LS. Flap gate partially blocked and will not close completely.
FIELD_STRUCT_DESC: 48-inch corrugated metal drainage pipe through the levee, 20 feet below the crown. Slide gate in 60-inch riser on the waterside (WS) slope. Flap gate and concrete headwall on the WS. (48-inch pipe authorized under Automatic Board Order (ABO) issued as Permit No. 9387, 1974 - Lauretta S. Christenson). [Additional Reference(s): DWR Levee Log, 2005. USACE Sacramento O&M Manual 132, October 1959, (HLM 1.8)].
FS Date: 5/2/2017 1:56:07 PM

LM Start	1.77	Rating **	A/W	Issue No.	58 (cont)
LM End	1.77	Issue Type +	Ma	Location *	

Photo 1 of 3 : UCIP_FA_2017_51785_68991.jpg



60-inch standpipe with slide gate on WS slope with outlet in background.

Photo 2 of 3 : UCIP_FA_2017_51785_68990.jpg



Flap gate and concrete headwall at WS toe.

* Location	** Rating	+ Issue Type
LS : Land Side WS : Water Side CR : Crown	A : Acceptable M : Minimally Acceptable U : Unacceptable	Ma : Maintenance Deficiency Ob : Design & System Obsolescence En : Enforcement
N/A : Not Applicable	N : Not Inspected/Rated C : Corrected A/W : Acceptable but Monitor & Maintain	

**Flood Control Project Maintenance
Levee Inspections**

Maintenance Issue Types Only, Levee Inspection Report By Mile - Fall 2017

Sutter Maintenance Yard Maintenance Area 0012

Waterway	Bank	Unit Miles	Inspection Start/End	Inspector
Unit No. 01 Colusa Drain	Left	11.06	09/13/2017 09/13/2017	Bob Duffey

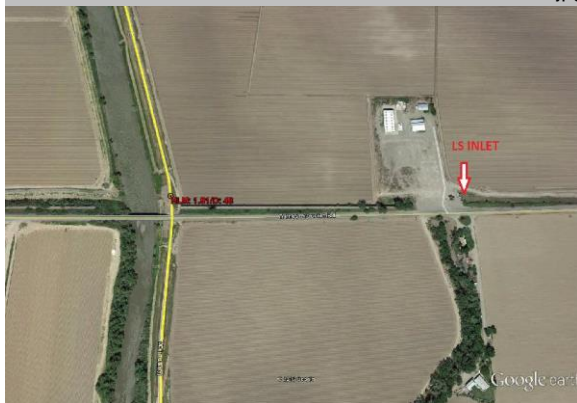
LM Start	1.77	Rating **	A/W	Issue No.	58 (cont)
LM End	1.77	Issue Type +	Ma	Location *	
Category	Supplemental		GPS Latitude/Longitude		
			Start	End	
Item	DWR UCIP LMA Responsibility		39.056847 °	39.056847 °	
			-122.003288 °	-122.003288 °	
DWR ID					

Comment Code

Inspector Comment

FS_ID:51785
DS_ID:17150
EP_NO: 9387
Repair Type: No Action Needed
Crossing Status: Found
UCIP Comments: 5/2/2017 Crossing appears to be in good condition. (DWR Sutter Yard- A Freitag)10/17/2016 Crossing appears to be in good condition. (DWR Sutter Yard- A Freitag)5/31/2016 Crossing appears to be in good condition. Attached photo showing location of LS inlet.5/4/2015 WS flapgate mostly underwater but could tell it was blocked open by something. LS inlet is located about 1/4 mile north along the side of the roadway.6/17/2014 Same as last inspection.12/16/2013 Pipe was flowing water and flap gate was being pushed open. Cannot verify if it will close all the way.7/16/2013 Same as last inspection. Was told inlet is about 1/4 mile down road way next to house. Will try to get coordinates for inlet.10/11/2012 No inlet could be located on LS. Flap gate partially blocked and will not close completely.
FIELD_STRUCT_DESC: 48-inch corrugated metal drainage pipe through the levee, 20 feet below the crown. Slide gate in 60-inch riser on the waterside (WS) slope. Flap gate and concrete headwall on the WS. (48-inch pipe authorized under Automatic Board Order (ABO) issued as Permit No. 9387, 1974 - Laurretta S. Christenson). [Additional Reference(s): DWR Levee Log, 2005. USACE Sacramento O&M Manual 132, October 1959, (HLM 1.8)].
FS Date: 5/2/2017 1:56:07 PM

Photo 3 of 3 : UCIP_FA_2017_51785_75168.jpg



Arrow showing location of LS inlet

* Location	** Rating	+ Issue Type
LS : Land Side WS : Water Side CR : Crown	A : Acceptable M : Minimally Acceptable U : Unacceptable N : Not Inspected/Rated C : Corrected A/W : Acceptable but Monitor & Maintain	Ma : Maintenance Deficiency Ob : Design & System Obsolescence En : Enforcement

**Flood Control Project Maintenance
Levee Inspections**

Maintenance Issue Types Only, Levee Inspection Report By Mile - Fall 2017

Sutter Maintenance Yard Maintenance Area 0012

Waterway	Bank	Unit Miles	Inspection Start/End	Inspector
Unit No. 01 Colusa Drain	Left	11.06	09/13/2017 09/13/2017	Bob Duffey

LM Start	1.81	Rating **	C	Issue No.	35
LM End	1.81	Issue Type +	Ma	Location *	LS
Category	Earthen Levee			GPS Latitude/Longitude	
				Start	End
Item	Slope Stability			39.057393 °	39.057393 °
				-122.003452 °	-122.003452 °
DWR ID	DWR_MA0012_01_f_2016_35				
Comment Code					
S3 : Repair the levee slope damaged by vehicle traffic and prevent access where possible.					
Inspector Comment					
The landside slope was repaired.					

No Photos

*** Location**
LS : Land Side N/A : Not Applicable
WS : Water Side
CR : Crown

**** Rating**
A : Acceptable N : Not Inspected/Rated
M : Minimally Acceptable C : Corrected
U : Unacceptable A/W : Acceptable but Monitor & Maintain

+ Issue Type
Ma : Maintenance Deficiency
Ob : Design & System Obsolescence
En : Enforcement

**Flood Control Project Maintenance
Levee Inspections**

Maintenance Issue Types Only, Levee Inspection Report By Mile - Fall 2017

Sutter Maintenance Yard Maintenance Area 0012

Waterway	Bank	Unit Miles	Inspection Start/End	Inspector
Unit No. 01 Colusa Drain	Left	11.06	09/13/2017 09/13/2017	Bob Duffey

LM Start	1.98	Rating **	M	Issue No.	59
LM End	1.98	Issue Type +	Ma	Location *	
Category	Supplemental			GPS Latitude/Longitude	
				Start	End
Item	DWR UCIP LMA Responsibility			39.059773 °	39.059773 °
				-122.004391 °	-122.004391 °
DWR ID					

Comment Code

Inspector Comment

FS_ID:51786
DS_ID:17151
EP_NO: 9391
Repair Type: Non-Urgent
Crossing Status: Found
UCIP Comments: 5/2/2017 Both ends of pipe buried. (DWR Sutter Yard- A Freitag)10/17/2016 Appears abandoned. Both pipe ends are completely buried. (DWR Sutter Yard- A Freitag)9/29/2016 Crossing has been downgraded from Urgent to Non-Urgent both pipe ends are buried. Having both ends buried prevents water from flowing from WS to LS during flood season. Need to contact owner and have owner coordinate with CVFPB to comply with Title 23. (DWR UCIP - omagana)5/31/2016 Both pipe ends are buried. Pipe is non-operational. (DWR Sutter Yard - a Freitag)5/4/2015 LS and WS ends are blocked with soil. Pipe is inoperable as it is. (DWR Sutter Yard - a Freitag)6/17/2014 Same as last inspection. (DWR Sutter Yard - a Freitag)12/16/2013 Same as last inspection. (DWR Sutter Yard - a Freitag)7/16/2013 LS inlet is completely filled with soil. Needs to be cleaned out. (DWR Sutter Yard - a Freitag)10/11/2012 Inlet is partially filled with soil. (DWR Sutter Yard - wylie)
FIELD_STRUCT_DESC: *ABANDONED* 24-inch corrugated metal drainage pipe through the levee, 13 feet below the crown. Flap gate, concrete headwall, and grouted cobble spillway on the waterside (WS). Concrete headwall on the landside (LS). (24-inch pipe authorized under Automatic Board Order (ABO) issued as Permit No. 9391, 1974 - Department of Water Resources, Northern District). [Additional Reference(s): DWR Levee Log, 2005. USACE Sacramento O&M Manual 132, October 1959, (HLM 2.02)].
FS Date: 5/2/2017 2:01:25 PM

Photo 1 of 3 : UCIP_FA_2017_51786_68994.jpg



WS view of outlet.

* Location	** Rating	+ Issue Type
LS : Land Side WS : Water Side CR : Crown	A : Acceptable M : Minimally Acceptable U : Unacceptable	Ma : Maintenance Deficiency Ob : Design & System Obsolescence En : Enforcement
	N : Not Inspected/Rated C : Corrected A/W : Acceptable but Monitor & Maintain	

**Flood Control Project Maintenance
Levee Inspections**

Maintenance Issue Types Only, Levee Inspection Report By Mile - Fall 2017

Sutter Maintenance Yard Maintenance Area 0012

Waterway	Bank	Unit Miles	Inspection Start/End	Inspector
Unit No. 01 Colusa Drain	Left	11.06	09/13/2017 09/13/2017	Bob Duffey

LM Start	1.98	Rating **	M	Issue No.	59 (cont)
LM End	1.98	Issue Type +	Ma	Location *	
Category	Supplemental			GPS Latitude/Longitude	
				Start	End
Item	DWR UCIP LMA Responsibility			39.059773 °	39.059773 °
				-122.004391 °	-122.004391 °
DWR ID					

Comment Code

Inspector Comment

FS_ID:51786
DS_ID:17151
EP_NO: 9391
Repair Type: Non-Urgent
Crossing Status: Found
UCIP Comments: 5/2/2017 Both ends of pipe buried. (DWR Sutter Yard- AFreitag)10/17/2016 Appears abandoned. Both pipe ends are completely buried. (DWR Sutter Yard- AFreitag)9/29/2016 Crossing has been downgraded from Urgent to Non-Urgent both pipe ends are buried. Having both ends buried prevents water from flowing from WS to LS during flood season. Need to contact owner and have owner coordinate with CVFPB to comply with Title 23. (DWR UCIP - omagana)5/31/2016 Both pipe ends are buried. Pipe is non-operational. (DWR Sutter Yard - afreitag)5/4/2015 LS and WS ends are blocked with soil. Pipe is inoperable as it is. (DWR Sutter Yard - afreitag)6/17/2014 Same as last inspection. (DWR Sutter Yard - afreitag)12/16/2013 Same as last inspection. (DWR Sutter Yard - afreitag)7/16/2013 LS inlet is completely filled with soil. Needs to be cleaned out. (DWR Sutter Yard - afreitag)10/11/2012 Inlet is partially filled with soil. (DWR Sutter Yard - wwylie)
FIELD_STRUCT_DESC: *ABANDONED* 24-inch corrugated metal drainage pipe through the levee, 13 feet below the crown. Flap gate, concrete headwall, and grouted cobble spillway on the waterside (WS). Concrete headwall on the landside (LS). (24-inch pipe authorized under Automatic Board Order (ABO) issued as Permit No. 9391, 1974 - Department of Water Resources, Northern District). [Additional Reference(s): DWR Levee Log, 2005. USACE Sacramento O&M Manual 132, October 1959, (HLM 2.02)].
FS Date: 5/2/2017 2:01:25 PM

Photo 2 of 3 : UCIP_FA_2017_51786_68993.jpg



LS view of inlet.

* Location	** Rating	+ Issue Type
LS : Land Side WS : Water Side CR : Crown	A : Acceptable M : Minimally Acceptable U : Unacceptable	Ma : Maintenance Deficiency Ob : Design & System Obsolescence En : Enforcement
N/A : Not Applicable	N : Not Inspected/Rated C : Corrected A/W : Acceptable but Monitor & Maintain	

**Flood Control Project Maintenance
Levee Inspections**

Maintenance Issue Types Only, Levee Inspection Report By Mile - Fall 2017

Sutter Maintenance Yard Maintenance Area 0012

Waterway	Bank	Unit Miles	Inspection Start/End	Inspector
Unit No. 01 Colusa Drain	Left	11.06	09/13/2017 09/13/2017	Bob Duffey

LM Start	1.98	Rating **	M	Issue No.	59 (cont)
LM End	1.98	Issue Type +	Ma	Location *	
Category	Supplemental			GPS Latitude/Longitude	
				Start	End
Item	DWR UCIP LMA Responsibility			39.059773 °	39.059773 °
				-122.004391 °	-122.004391 °
DWR ID					

Comment Code

Inspector Comment

FS_ID:51786
DS_ID:17151
EP_NO: 9391
Repair Type: Non-Urgent
Crossing Status: Found
UCIP Comments: 5/2/2017 Both ends of pipe buried. (DWR Sutter Yard- AFreitag)10/17/2016 Appears abandoned. Both pipe ends are completely buried. (DWR Sutter Yard- AFreitag)9/29/2016 Crossing has been downgraded from Urgent to Non-Urgent both pipe ends are buried. Having both ends buried prevents water from flowing from WS to LS during flood season. Need to contact owner and have owner coordinate with CVFPB to comply with Title 23. (DWR UCIP - omagana)5/31/2016 Both pipe ends are buried. Pipe is non-operational. (DWR Sutter Yard - afreitag)5/4/2015 LS and WS ends are blocked with soil. Pipe is inoperable as it is. (DWR Sutter Yard - afreitag)6/17/2014 Same as last inspection. (DWR Sutter Yard - afreitag)12/16/2013 Same as last inspection. (DWR Sutter Yard - afreitag)7/16/2013 LS inlet is completely filled with soil. Needs to be cleaned out. (DWR Sutter Yard - afreitag)10/11/2012 Inlet is partially filled with soil. (DWR Sutter Yard - wwylie)
FIELD_STRUCT_DESC: *ABANDONED* 24-inch corrugated metal drainage pipe through the levee, 13 feet below the crown. Flap gate, concrete headwall, and grouted cobble spillway on the waterside (WS). Concrete headwall on the landside (LS). (24-inch pipe authorized under Automatic Board Order (ABO) issued as Permit No. 9391, 1974 - Department of Water Resources, Northern District). [Additional Reference(s): DWR Levee Log, 2005. USACE Sacramento O&M Manual 132, October 1959, (HLM 2.02)].
FS Date: 5/2/2017 2:01:25 PM

Photo 3 of 3 : UCIP_FA_2017_51786_68992.jpg



Concrete U shaped headwall at LS toe.

* Location	** Rating	+ Issue Type
LS : Land Side WS : Water Side CR : Crown	A : Acceptable M : Minimally Acceptable U : Unacceptable	Ma : Maintenance Deficiency Ob : Design & System Obsolescence En : Enforcement
	N : Not Inspected/Rated C : Corrected A/W : Acceptable but Monitor & Maintain	

**Flood Control Project Maintenance
Levee Inspections**

Maintenance Issue Types Only, Levee Inspection Report By Mile - Fall 2017

Sutter Maintenance Yard Maintenance Area 0012

Waterway	Bank	Unit Miles	Inspection Start/End	Inspector
Unit No. 01 Colusa Drain	Left	11.06	09/13/2017 09/13/2017	Bob Duffey

LM Start	3.15	Rating **	A/W	Issue No.	60
LM End	3.15	Issue Type +	Ma	Location *	
Category	Supplemental			GPS Latitude/Longitude	
				Start	End
Item	DWR UCIP LMA Responsibility			39.074151 °	39.074151 °
				-122.014960 °	-122.014960 °
DWR ID					

Comment Code

Inspector Comment

FS_ID:51788
DS_ID:17153
EP_NO: 9384
Repair Type: No Action Needed
Crossing Status: Found
UCIP Comments: 5/2/2017 Crossing appears to be in good condition.
(DWR Sutter Yard- A Freitag)10/17/2016 Crossing appears to be in good condition. (DWR Sutter Yard- A Freitag)5/31/2016 Crossing appears to be in good condition.5/4/2015 Crossing appears in good condition. No noticeable issues.6/17/2014 Same as last inspection.12/16/2013 Same as last inspection.7/16/2013 Same as last inspection.
FIELD_STRUCT_DESC: 24-inch corrugated metal drainage pipe through the levee, 16 feet below the crown. Flap gate, concrete headwall, and grouted cobble spillway on the waterside (WS). Concrete headwall on the landside (LS). (24-inch pipe [HLM 3.22] authorized under Automatic Board Order (ABO) issued as Permit No. 9384, 1974 - William D. Struckmeyer) [Additional Reference(s): DWR Levee Log, 2005. USACE Sacramento O&M Manual 132, October 1959, (HLM 3.22)].
FS Date: 5/2/2017 2:04:40 PM

LM Start	3.15	Rating **	A/W	Issue No.	60 (cont)
LM End	3.15	Issue Type +	Ma	Location *	

Photo 1 of 3 : UCIP_FA_2017_51788_69002.jpg



Concrete headwall at LS toe.

Photo 2 of 3 : UCIP_FA_2017_51788_69001.jpg



Drainage Swale on WS toe.

* Location LS : Land Side N/A : Not Applicable WS : Water Side CR : Crown		** Rating A : Acceptable M : Minimally Acceptable U : Unacceptable N : Not Inspected/Rated C : Corrected A/W : Acceptable but Monitor & Maintain		+ Issue Type Ma : Maintenance Deficiency Ob : Design & System Obsolescence En : Enforcement	
--	--	---	--	---	--

**Flood Control Project Maintenance
Levee Inspections**

Maintenance Issue Types Only, Levee Inspection Report By Mile - Fall 2017

Sutter Maintenance Yard Maintenance Area 0012

Waterway	Bank	Unit Miles	Inspection Start/End	Inspector
Unit No. 01 Colusa Drain	Left	11.06	09/13/2017 09/13/2017	Bob Duffey

LM Start	3.15	Rating **	A/W	Issue No.	60 (cont)	
LM End	3.15	Issue Type +	Ma	Location *		
Category	Supplemental			GPS Latitude/Longitude		
				Start	End	
Item	DWR UCIP LMA Responsibility			39.074151 °	39.074151 °	
				-122.014960 °	-122.014960 °	
DWR ID						
Comment Code						
Inspector Comment						
FS_ID:51788 DS_ID:17153 EP_NO: 9384 Repair Type: No Action Needed Crossing Status: Found UCIP Comments: 5/2/2017 Crossing appears to be in good condition. (DWR Sutter Yard- AFreitag)10/17/2016 Crossing appears to be in good condition. (DWR Sutter Yard- AFreitag)5/31/2016 Crossing appears to be in good condition.5/4/2015 Crossing appears in good condition. No noticeable issues.6/17/2014 Same as last inspection.12/16/2013 Same as last inspection.7/16/2013 Same as last inspection. FIELD_STRUCT_DESC: 24-inch corrugated metal drainage pipe through the levee, 16 feet below the crown. Flap gate, concrete headwall, and grouted cobble spillway on the waterside (WS). Concrete headwall on the landside (LS). (24-inch pipe [HLM 3.22] authorized under Automatic Board Order (ABO) issued as Permit No. 9384, 1974 - William D. Struckmeyer) [Additional Reference(s): DWR Levee Log, 2005. USACE Sacramento O&M Manual 132, October 1959, (HLM 3.22)]. FS Date: 5/2/2017 2:04:40 PM						

Photo 3 of 3 : UCIP_FA_2017_51788_69000.jpg



Concrete headwall and flap gate at WS toe.

LM Start	3.46	Rating **	C	Issue No.	48
LM End	11.04	Issue Type +	Ma	Location *	CR
Category	Earthen Levee			GPS Latitude/Longitude	
				Start	End
Item	Crown Surface / Depressions / Rutting			39.078582 °	39.180208 °
				-122.016157 °	-122.011983 °
DWR ID	DWR_MA0012_01_s_2017_48				
Comment Code					
C2 : Repair depressions or ruts in the crown or slope.					
Inspector Comment					
The crown roadway graveled and reggraded.					

No Photos

* Location LS : Land Side N/A : Not Applicable WS : Water Side CR : Crown		** Rating A : Acceptable N : Not Inspected/Rated M : Minimally Acceptable C : Corrected U : Unacceptable A/W : Acceptable but Monitor & Maintain		+ Issue Type Ma : Maintenance Deficiency Ob : Design & System Obsolescence En : Enforcement
--	--	---	--	---

**Flood Control Project Maintenance
Levee Inspections**

Maintenance Issue Types Only, Levee Inspection Report By Mile - Fall 2017

Sutter Maintenance Yard Maintenance Area 0012

Waterway	Bank	Unit Miles	Inspection Start/End	Inspector
Unit No. 01 Colusa Drain	Left	11.06	09/13/2017 09/13/2017	Bob Duffey

LM Start	3.69	Rating **	U	Issue No.	61
LM End	3.69	Issue Type +	Ma	Location *	
Category	Supplemental			GPS Latitude/Longitude	
				Start	End
Item	DWR UCIP LMA Responsibility			39.081949 °	39.081949 °
				-122.016179 °	-122.016179 °
DWR ID					

Comment Code

Inspector Comment

FS_ID:51789
DS_ID:17154
EP_NO: 9388
Repair Type: Urgent
Crossing Status: Found
UCIP Comments: 5/2/2017 WS slidegate stem is still bent, wheel to operate gate is missing. Needs a cover made for the standpipe to prevent falls. (DWR Sutter Yard- A Freitag)10/17/2016 Slide gate stem is still bent and the gate appears to be inoperable. (DWR Sutter Yard- A Freitag)5/31/2016 Slide gate stem is still bent. WS flap gate is chained open. (DWR Sutter Yard - A Freitag)5/4/2015 Slide gate stem is still bent. Gate looks to be unable to close all the way. (DWR Sutter Yard - A Freitag)6/17/2014 Same as last inspection. (DWR Sutter Yard - A Freitag)12/16/2013 Slide gate stem is still bent. WS flapgate was closed. (DWR Sutter Yard - A Freitag)7/16/2013 Water flowing through pipe so screw gate definitely not closed. Was told NOV's have been sent for owner to replace stem. Flap gate gets closed for flood season. (DWR Sutter Yard - A Freitag)10/11/2012 Slide gate inoperable, but appears to be in closed position. Flap gate held in open position. Good candidate for video inspection when, if ever, dry. (DWR UCIP - Wwyllie)
FIELD_STRUCT_DESC: 48-inch corrugated metal drainage pipe through the levee, 28 feet below the crown. Slide gate in a 66-inch riser on the waterside (WS) slope. Concrete headwall on the WS. Grouted cobble spillway from drainage ditch to large canal on the landside (LS). (48-inch pipe [HLM 3.78] authorized under Automatic Board Order (ABO) issued as Permit No. 9388, 1974 - Pauline A. Wallace).
[Additional Reference(s): DWR Levee Log, 2005. USACE Sacramento O&M Manual 132, October 1959, (HLM 3.78)].
FS Date: 5/2/2017 2:05:16 PM

Photo 1 of 3 : UCIP_FA_2017_51789_69005.jpg



Slide gate in corrugated metal riser on WS slope.

* Location	** Rating	+ Issue Type
LS : Land Side WS : Water Side CR : Crown	A : Acceptable M : Minimally Acceptable U : Unacceptable	Ma : Maintenance Deficiency Ob : Design & System Obsolescence En : Enforcement
	N : Not Inspected/Rated C : Corrected A/W : Acceptable but Monitor & Maintain	

**Flood Control Project Maintenance
Levee Inspections**

Maintenance Issue Types Only, Levee Inspection Report By Mile - Fall 2017

Sutter Maintenance Yard Maintenance Area 0012

Waterway	Bank	Unit Miles	Inspection Start/End	Inspector
Unit No. 01 Colusa Drain	Left	11.06	09/13/2017 09/13/2017	Bob Duffey

LM Start	3.69	Rating **	U	Issue No.	61 (cont)
LM End	3.69	Issue Type +	Ma	Location *	
Category	Supplemental			GPS Latitude/Longitude	
				Start	End
Item	DWR UCIP LMA Responsibility			39.081949 °	39.081949 °
				-122.016179 °	-122.016179 °
DWR ID					

Comment Code

Inspector Comment

FS_ID:51789
DS_ID:17154
EP_NO: 9388
Repair Type: Urgent
Crossing Status: Found
UCIP Comments: 5/2/2017 WS slidegate stem is still bent, wheel to operate gate is missing. Needs a cover made for the standpipe to prevent falls. (DWR Sutter Yard- A Freitag)10/17/2016 Slide gate stem is still bent and the gate appears to be inoperable. (DWR Sutter Yard- A Freitag)5/31/2016 Slide gate stem is still bent. WS flap gate is chained open. (DWR Sutter Yard - A Freitag)5/4/2015 Slide gate stem is still bent. Gate looks to be unable to close all the way. (DWR Sutter Yard - A Freitag)6/17/2014 Same as last inspection. (DWR Sutter Yard - A Freitag)12/16/2013 Slide gate stem is still bent. WS flapgate was closed. (DWR Sutter Yard - A Freitag)7/16/2013 Water flowing through pipe so screw gate definitely not closed. Was told NOV's have been sent for owner to replace stem. Flap gate gets closed for flood season. (DWR Sutter Yard - A Freitag)10/11/2012 Slide gate inoperable, but appears to be in closed position. Flap gate held in open position. Good candidate for video inspection when, if ever, dry. (DWR UCIP - Wylie)
FIELD_STRUCT_DESC: 48-inch corrugated metal drainage pipe through the levee, 28 feet below the crown. Slide gate in a 66-inch riser on the waterside (WS) slope. Concrete headwall on the WS. Grouted cobble spillway from drainage ditch to large canal on the landside (LS). (48-inch pipe [HLM 3.78] authorized under Automatic Board Order (ABO) issued as Permit No. 9388, 1974 - Pauline A. Wallace).
[Additional Reference(s): DWR Levee Log, 2005. USACE Sacramento O&M Manual 132, October 1959, (HLM 3.78)].
FS Date: 5/2/2017 2:05:16 PM

Photo 2 of 3 : UCIP_FA_2017_51789_69004.jpg



Drainage ditch on LS toe.

* Location	** Rating	+ Issue Type
LS : Land Side WS : Water Side CR : Crown	A : Acceptable M : Minimally Acceptable U : Unacceptable	Ma : Maintenance Deficiency Ob : Design & System Obsolescence En : Enforcement
	N : Not Inspected/Rated C : Corrected A/W : Acceptable but Monitor & Maintain	

**Flood Control Project Maintenance
Levee Inspections**

Maintenance Issue Types Only, Levee Inspection Report By Mile - Fall 2017

Sutter Maintenance Yard Maintenance Area 0012

Waterway	Bank	Unit Miles	Inspection Start/End	Inspector
Unit No. 01 Colusa Drain	Left	11.06	09/13/2017 09/13/2017	Bob Duffey

LM Start	3.69	Rating **	U	Issue No.	61 (cont)
LM End	3.69	Issue Type +	Ma	Location *	
Category	Supplemental			GPS Latitude/Longitude	
				Start	End
Item	DWR UCIP LMA Responsibility			39.081949 °	39.081949 °
				-122.016179 °	-122.016179 °
DWR ID					

Comment Code

Inspector Comment

FS_ID:51789
DS_ID:17154
EP_NO: 9388
Repair Type: Urgent
Crossing Status: Found
UCIP Comments: 5/2/2017 WS slidegate stem is still bent, wheel to operate gate is missing. Needs a cover made for the standpipe to prevent falls. (DWR Sutter Yard- A Freitag)10/17/2016 Slide gate stem is still and the gate appears to be inoperable. (DWR Sutter Yard- A Freitag)5/31/2016 Slide gate stem is still bent. WS flap gate is chained open. (DWR Sutter Yard - a Freitag)5/4/2015 Slide gate stem is still bent. Gate looks to be unable to close all the way. (DWR Sutter Yard - a Freitag)6/17/2014 Same as last inspection. (DWR Sutter Yard - a Freitag)12/16/2013 Slide gate stem is still bent. WS flapgate was closed. (DWR Sutter Yard - a Freitag)7/16/2013 Water flowing through pipe so screw gate definitely not closed. Was told NOV's have been sent for owner to replace stem. Flap gate gets closed for flood season. (DWR Sutter Yard - a Freitag)10/11/2012 Slide gate inoperable, but appears to be in closed position. Flap gate held in open position. Good candidate for video inspection when, if ever, dry. (DWR UCIP - wwyllie)
FIELD_STRUCT_DESC: 48-inch corrugated metal drainage pipe through the levee, 28 feet below the crown. Slide gate in a 66-inch riser on the waterside (WS) slope. Concrete headwall on the WS. Grouted cobble spillway from drainage ditch to large canal on the landside (LS). (48-inch pipe [HLM 3.78] authorized under Automatic Board Order (ABO) issued as Permit No. 9388, 1974 - Pauline A. Wallace).
[Additional Reference(s): DWR Levee Log, 2005. USACE Sacramento O&M Manual 132, October 1959, (HLM 3.78)].
FS Date: 5/2/2017 2:05:16 PM

Photo 3 of 3 : UCIP_FA_2017_51789_69008.jpg



Bent screw for slide gate at WS shoulder.

* Location	** Rating	+ Issue Type
LS : Land Side WS : Water Side CR : Crown	A : Acceptable M : Minimally Acceptable U : Unacceptable	Ma : Maintenance Deficiency Ob : Design & System Obsolescence En : Enforcement
	N : Not Inspected/Rated C : Corrected A/W : Acceptable but Monitor & Maintain	

**Flood Control Project Maintenance
Levee Inspections**

Maintenance Issue Types Only, Levee Inspection Report By Mile - Fall 2017

Sutter Maintenance Yard Maintenance Area 0012

Waterway	Bank	Unit Miles	Inspection Start/End	Inspector
Unit No. 01 Colusa Drain	Left	11.06	09/13/2017 09/13/2017	Bob Duffey

LM Start	4.15	Rating **	A/W	Issue No.	62
LM End	4.15	Issue Type +	Ma	Location *	
Category	Supplemental			GPS Latitude/Longitude	
				Start	End
Item	DWR UCIP LMA Responsibility			39.088561 °	39.088561 °
				-122.015179 °	-122.015179 °
DWR ID					

Comment Code

Inspector Comment

FS_ID:51791
DS_ID:17168
EP_NO: 9388
Repair Type: No Action Needed
Crossing Status: Found
UCIP Comments: 5/2/2017 Crossing appears to be in good condition.
(DWR Sutter Yard- A Freitag)10/17/2016 Crossing appears to be in good condition. (DWR Sutter Yard- A Freitag)5/31/2016 Crossing appears to be in good condition.5/4/2015 Corssing appears to be in good condition. No noticeable issues to report.6/17/2014 Same as last inspection.12/16/2013 Same as last inspection.7/16/2013 Same as last inspection.
FIELD_STRUCT_DESC: 36-inch corrugated metal drainage pipe through the levee, 27.5 feet below the crown. Flap gate, concrete headwall, and grouted cobble spillway located on the waterside (WS). Concrete headwall located on the landside (LS). (24-inch pipe [HLM 4.25] authorized under Automatic Board Order (ABO) issued as Permit No. 9388, 1974 - Pauline A. Wallace). [Additional Reference(s): DWR Levee Log, 2005. USACE Sacramento O&M Manual 132, October 1959, (HLM 4.25)].
FS Date: 5/2/2017 2:08:40 PM

LM Start	4.15	Rating **	A/W	Issue No.	62 (cont)
LM End	4.15	Issue Type +	Ma	Location *	

Photo 1 of 3 : UCIP_FA_2017_51791_69014.jpg



Outlet at WS toe.

Photo 2 of 3 : UCIP_FA_2017_51791_69013.jpg



Concrete U shaped headwall on LS toe.

* Location	** Rating	+ Issue Type
LS : Land Side WS : Water Side CR : Crown	A : Acceptable M : Minimally Acceptable U : Unacceptable	Ma : Maintenance Deficiency Ob : Design & System Obsolescence En : Enforcement
N/A : Not Applicable	N : Not Inspected/Rated C : Corrected A/W : Acceptable but Monitor & Maintain	

**Flood Control Project Maintenance
Levee Inspections**

Maintenance Issue Types Only, Levee Inspection Report By Mile - Fall 2017

Sutter Maintenance Yard Maintenance Area 0012

Waterway	Bank	Unit Miles	Inspection Start/End	Inspector
Unit No. 01 Colusa Drain	Left	11.06	09/13/2017 09/13/2017	Bob Duffey

LM Start	4.15	Rating **	A/W	Issue No.	62 (cont)	
LM End	4.15	Issue Type +	Ma	Location *		
Category	Supplemental			GPS Latitude/Longitude		
				Start	End	
Item	DWR UCIP LMA Responsibility			39.088561 °	39.088561 °	
				-122.015179 °	-122.015179 °	
DWR ID						
Comment Code						
Inspector Comment						
FS_ID:51791						
DS_ID:17168						
EP_NO: 9388						
Repair Type: No Action Needed						
Crossing Status: Found						
UCIP Comments: 5/2/2017 Crossing appears to be in good condition.						
(DWR Sutter Yard- A Freitag)10/17/2016 Crossing appears to be in						
good condition. (DWR Sutter Yard- A Freitag)5/31/2016 Crossing						
appears to be in good condition.5/4/2015 Corssing appears to be in						
good condition. No noticeable issues to report.6/17/2014 Same as						
last inspection.12/16/2013 Same as last inspection.7/16/2013						
Same as last inspection.						
FIELD_STRUCT_DESC: 36-inch corrugated metal drainage pipe						
through the levee, 27.5 feet below the crown. Flap gate, concrete						
headwall, and grouted cobble spillway located on the waterside (WS).						
Concrete headwall located on the landside (LS). (24-inch pipe [HLM						
4.25] authorized under Automatic Board Order (ABO) issued as Permit						
No. 9388, 1974 - Pauline A. Wallace). [Additional Reference(s): DWR						
Levee Log, 2005. USACE Sacramento O&M Manual 132, October						
1959, (HLM 4.25)].						
FS Date: 5/2/2017 2:08:40 PM						

Photo 3 of 3 : UCIP_FA_2017_51791_69012.jpg



Concrete U shaped headwall and flap gate on WS toe.

* Location LS : Land Side N/A : Not Applicable WS : Water Side CR : Crown	** Rating A : Acceptable M : Minimally Acceptable U : Unacceptable	N : Not Inspected/Rated C : Corrected A/W : Acceptable but Monitor & Maintain	+ Issue Type Ma : Maintenance Deficiency Ob : Design & System Obsolescence En : Enforcement
--	--	---	---

**Flood Control Project Maintenance
Levee Inspections**

Maintenance Issue Types Only, Levee Inspection Report By Mile - Fall 2017

Sutter Maintenance Yard Maintenance Area 0012

Waterway	Bank	Unit Miles	Inspection Start/End	Inspector
Unit No. 01 Colusa Drain	Left	11.06	09/13/2017 09/13/2017	Bob Duffey

LM Start	4.22	Rating **	A/W	Issue No.	63
LM End	4.22	Issue Type +	Ma	Location *	
Category	Supplemental			GPS Latitude/Longitude	
				Start	End
Item	DWR UCIP LMA Responsibility			39.089551 °	39.089551 °
				-122.015241 °	-122.015241 °
DWR ID					

Comment Code

Inspector Comment

FS_ID:51792
DS_ID:17156
EP_NO: 9388
Repair Type: No Action Needed
Crossing Status: Found
UCIP Comments: 5/2/2017 Crossing appears to be in good condition.
(DWR Sutter Yard- A Freitag)10/17/2016 Crossing appears to be in good condition.
(DWR Sutter Yard- A Freitag)5/31/2016 Crossing appears to be in good condition.
5/4/2015 Corssing appears to be in good condition. No noticeable issues to report.
6/17/2014 Same as last inspection.12/16/2013 Same as last inspection.7/16/2013 Same as last inspection.
FIELD_STRUCT_DESC: 24-inch corrugated metal drainage pipe through the levee, 9.2 feet below the crown. Slide gate in a 36-inch corrugated metal pipe (CMP) riser on the waterside (WS) slope. Pump on a 60-inch concrete standpipe at the landside (LS) toe. (24-inch pipe [HLM 4.32] authorized under Automatic Board Order (ABO) issued as Permit No. 9388, 1974 - Pauline A. Wallace). [Additional Reference(s): DWR Levee Log, 2005. USACE Sacramento O&M Manual 132, October 1959, (HLM 4.32)].
FS Date: 5/2/2017 2:20:21 PM

LM Start	4.22	Rating **	A/W	Issue No.	63 (cont)
LM End	4.22	Issue Type +	Ma	Location *	

Photo 1 of 3 : UCIP_FA_2017_51792_69017.jpg



Pump on Concrete riser at LS toe.

Photo 2 of 3 : UCIP_FA_2017_51792_69016.jpg



Pipe through levee at LS slope.

* Location	** Rating	+ Issue Type
LS : Land Side WS : Water Side CR : Crown	A : Acceptable M : Minimally Acceptable U : Unacceptable	Ma : Maintenance Deficiency Ob : Design & System Obsolescence En : Enforcement
N/A : Not Applicable	N : Not Inspected/Rated C : Corrected A/W : Acceptable but Monitor & Maintain	

**Flood Control Project Maintenance
Levee Inspections**

Maintenance Issue Types Only, Levee Inspection Report By Mile - Fall 2017

Sutter Maintenance Yard Maintenance Area 0012

Waterway	Bank	Unit Miles	Inspection Start/End	Inspector
Unit No. 01 Colusa Drain	Left	11.06	09/13/2017 09/13/2017	Bob Duffey

LM Start	4.76	Rating **	A/W	Issue No.	65
LM End	4.76	Issue Type +	Ma	Location *	
Category	Supplemental			GPS Latitude/Longitude	
				Start	End
Item	DWR UCIP LMA Responsibility			39.097378 °	39.097378 °
				-122.015560 °	-122.015560 °
DWR ID					

Comment Code

Inspector Comment

FS_ID:51795
DS_ID:17158
EP_NO: 9390
Repair Type: No Action Needed
Crossing Status: Found
UCIP Comments: 5/2/2017 Crossing appears to be in good condition. There is minor sediment build up in front of the WS flap gate/ (DWR Sutter Yard- A Freitag)10/17/2016 Crossing appears to be in good condition. (DWR Sutter Yard- A Freitag)5/31/2016 Crossing appears to be in good condition.5/4/2015 Corssing appears to be in good condition. No noticeable issues to report.6/17/2014 Same as last inspection.12/16/2013 Same as last inspection.7/16/2013 New flapgate installed on WS pipe end.10/11/2012 Flap gate broken on WS, Pipe shows significant rust at outlet. This is a good candidate for video inspection.
FIELD_STRUCT_DESC: 36-inch corrugated metal drainage pipe though the levee, 20 feet below the crown. Pump on metal pier in landside (LS) channel. 40-inch steel standpipe at the LS toe. Flap gate and concrete headwall on the waterside (WS). Concrete headwall on the LS. (36-inch pipe authorized under Automatic Board Order (ABO) issued as Permit No. 9390, 1974 - Annie D. Propfe). [Additional Reference(s): DWR Levee Log, 2005. USACE Sacramento O&M Manual 132, October 1959, (HLM 4.87)].
FS Date: 5/2/2017 2:30:31 PM

LM Start	4.76	Rating **	A/W	Issue No.	65 (cont)
LM End	4.76	Issue Type +	Ma	Location *	

Photo 1 of 3 : UCIP_FA_2017_51795_69026.jpg



Outlet channel on WS toe.

Photo 2 of 3 : UCIP_FA_2017_51795_69025.jpg



Pump, walkway, and standpipe on LS toe.

* Location	** Rating	+ Issue Type
LS : Land Side WS : Water Side CR : Crown	A : Acceptable M : Minimally Acceptable U : Unacceptable	Ma : Maintenance Deficiency Ob : Design & System Obsolescence En : Enforcement
N/A : Not Applicable	N : Not Inspected/Rated C : Corrected A/W : Acceptable but Monitor & Maintain	

**Flood Control Project Maintenance
Levee Inspections**

Maintenance Issue Types Only, Levee Inspection Report By Mile - Fall 2017

Sutter Maintenance Yard Maintenance Area 0012

Waterway	Bank	Unit Miles	Inspection Start/End	Inspector
Unit No. 01 Colusa Drain	Left	11.06	09/13/2017 09/13/2017	Bob Duffey

LM Start	4.76	Rating **	A/W	Issue No.	65 (cont)
LM End	4.76	Issue Type +	Ma	Location *	
Category	Supplemental			GPS Latitude/Longitude	
				Start	End
Item	DWR UCIP LMA Responsibility			39.097378 °	39.097378 °
				-122.015560 °	-122.015560 °
DWR ID					

Comment Code

Inspector Comment

FS_ID:51795
DS_ID:17158
EP_NO: 9390
Repair Type: No Action Needed
Crossing Status: Found
UCIP Comments: 5/2/2017 Crossing appears to be in good condition. There is minor sediment build up in front of the WS flap gate/ (DWR Sutter Yard- A Freitag)10/17/2016 Crossing appears to be in good condition. (DWR Sutter Yard- A Freitag)5/31/2016 Crossing appears to be in good condition.5/4/2015 Corssing appears to be in good condition. No noticeable issues to report.6/17/2014 Same as last inspection.12/16/2013 Same as last inspection.7/16/2013 New flapgate installed on WS pipe end.10/11/2012 Flap gate broken on WS, Pipe shows significant rust at outlet. This is a good candidate for video inspection.
FIELD_STRUCT_DESC: 36-inch corrugated metal drainage pipe though the levee, 20 feet below the crown. Pump on metal pier in landside (LS) channel. 40-inch steel standpipe at the LS toe. Flap gate and concrete headwall on the waterside (WS). Concrete headwall on the LS. (36-inch pipe authorized under Automatic Board Order (ABO) issued as Permit No. 9390, 1974 - Annie D. Propfe). [Additional Reference(s): DWR Levee Log, 2005. USACE Sacramento O&M Manual 132, October 1959, (HLM 4.87)].
FS Date: 5/2/2017 2:30:31 PM

Photo 3 of 3 : UCIP_FA_2017_51795_69024.jpg



Flap gate in concrete U-shaped headwall on WS toe.

* Location	** Rating	+ Issue Type
LS : Land Side WS : Water Side CR : Crown	A : Acceptable M : Minimally Acceptable U : Unacceptable	Ma : Maintenance Deficiency Ob : Design & System Obsolescence En : Enforcement
N/A : Not Applicable	N : Not Inspected/Rated C : Corrected A/W : Acceptable but Monitor & Maintain	

**Flood Control Project Maintenance
Levee Inspections**

Maintenance Issue Types Only, Levee Inspection Report By Mile - Fall 2017

Sutter Maintenance Yard Maintenance Area 0012

Waterway	Bank	Unit Miles	Inspection Start/End	Inspector
Unit No. 01 Colusa Drain	Left	11.06	09/13/2017 09/13/2017	Bob Duffey

LM Start	5.01	Rating **	M	Issue No.	66
LM End	5.01	Issue Type +	Ma	Location *	
Category	Supplemental			GPS Latitude/Longitude	
				Start	End
Item	DWR UCIP LMA Responsibility			39.100898 °	39.100898 °
				-122.016078 °	-122.016078 °
DWR ID					

Comment Code

Inspector Comment

FS_ID:51796
DS_ID:17191
EP_NO: N/A
Repair Type: Non-Urgent
Crossing Status: Found
UCIP Comments: 5/2/2017 WS headwall and flapgate almost completely buried with only a small portion of the head wall visible. LS end is buried and unable to be located. (DWR Sutter Yard-AFreitag)10/17/2016 WS flap gate is still silted over and LS inlet is heavily vegetated and unable to be inspected. (DWR Sutter Yard-AFreitag)9/29/2016 Crosssing has been downgraded from Urgent to Non-Urgent WS flap gate is closed shut due to sediment build up. For flood season flap gate is required to be closed. Need to coordinate with owner to remove sediment from WS to have WS flap gate be operable after flood season. (DWR UCIP - omagana)5/31/2016 WS pipe end was mostly underwater but it appears to still be silted over. (DWR Sutter Yard - afreitag)5/4/2015 WS flapgate is blocked by sediment and unable to open. LS inlet is hidden by sediment and heavy vegetation and unable to be located. Needs to be cleared. (DWR Sutter Yard - afreitag)6/17/2014 Same as last inspection. (DWR Sutter Yard - afreitag)12/16/2013 Same as last inspection. (DWR Sutter Yard - afreitag)7/16/2013 Same as last inspection. (DWR Sutter Yard - afreitag)10/11/2012 Pipe is clogged at both the inlet and outlet. Good candidate for video inspection. (DWR UCIP - wwylie)
FIELD_STRUCT_DESC: 48-inch corrugated metal drainage pipe through the levee, approximately 15 feet below the crown. Concrete headwalls on both the waterside (WS) and the landside (LS) ends with an automatic drainage gate on the WS. [Additional Reference(s): USACE Sacramento O&M Manual 132, October 1959, (HLM 5.12)].
FS Date: 5/2/2017 2:31:39 PM

Photo 1 of 3 : UCIP_FA_2017_51796_69030.jpg



Apparent inlet clogged with concrete or grout on LS toe in drainage swale.

* Location LS : Land Side WS : Water Side CR : Crown	** Rating A : Acceptable M : Minimally Acceptable U : Unacceptable	+ Issue Type Ma : Maintenance Deficiency Ob : Design & System Obsolescence En : Enforcement
--	--	---

**Flood Control Project Maintenance
Levee Inspections**

Maintenance Issue Types Only, Levee Inspection Report By Mile - Fall 2017

Sutter Maintenance Yard Maintenance Area 0012

Waterway	Bank	Unit Miles	Inspection Start/End	Inspector
Unit No. 01 Colusa Drain	Left	11.06	09/13/2017 09/13/2017	Bob Duffey

LM Start	5.01	Rating **	M	Issue No.	66 (cont)
LM End	5.01	Issue Type +	Ma	Location *	
Category	Supplemental			GPS Latitude/Longitude	
				Start	End
Item	DWR UCIP LMA Responsibility			39.100898 °	39.100898 °
				-122.016078 °	-122.016078 °
DWR ID					

Comment Code

Inspector Comment

FS_ID:51796
DS_ID:17191
EP_NO: N/A
Repair Type: Non-Urgent
Crossing Status: Found
UCIP Comments: 5/2/2017 WS headwall and flapgate almost completely buried with only a small portion of the head wall visible. LS end is buried and unable to be located. (DWR Sutter Yard-AFreitag)10/17/2016 WS flap gate is still silted over and LS inlet is heavily vegetated and unable to be inspected. (DWR Sutter Yard-AFreitag)9/29/2016 Crosssing has been downgraded from Urgent to Non-Urgent WS flap gate is closed shut due to sediment build up. For flood season flap gate is required to be closed. Need to coordinate with owner to remove sediment from WS to have WS flap gate be operable after flood season. (DWR UCIP - omagana)5/31/2016 WS pipe end was mostly underwater but it appears to still be silted over. (DWR Sutter Yard - afreitag)5/4/2015 WS flapgate is blocked by sediment and unable to open. LS inlet is hidden by sediment and heavy vegetation and unable to be located. Needs to be cleared. (DWR Sutter Yard - afreitag)6/17/2014 Same as last inspection. (DWR Sutter Yard - afreitag)12/16/2013 Same as last inspection. (DWR Sutter Yard - afreitag)7/16/2013 Same as last inspection. (DWR Sutter Yard - afreitag)10/11/2012 Pipe is clogged at both the inlet and outlet. Good candidate for video inspection. (DWR UCIP - wwylie)
FIELD_STRUCT_DESC: 48-inch corrugated metal drainage pipe through the levee, approximately 15 feet below the crown. Concrete headwalls on both the waterside (WS) and the landside (LS) ends with an automatic drainage gate on the WS. [Additional Reference(s): USACE Sacramento O&M Manual 132, October 1959, (HLM 5.12)].
FS Date: 5/2/2017 2:31:39 PM

Photo 2 of 3 : UCIP_FA_2017_51796_69029.jpg



Outlet on WS toe.

* Location LS : Land Side WS : Water Side CR : Crown	** Rating A : Acceptable M : Minimally Acceptable U : Unacceptable	+ Issue Type Ma : Maintenance Deficiency Ob : Design & System Obsolescence En : Enforcement
--	--	---

**Flood Control Project Maintenance
Levee Inspections**

Maintenance Issue Types Only, Levee Inspection Report By Mile - Fall 2017

Sutter Maintenance Yard Maintenance Area 0012

Waterway	Bank	Unit Miles	Inspection Start/End	Inspector
Unit No. 01 Colusa Drain	Left	11.06	09/13/2017 09/13/2017	Bob Duffey

LM Start	5.01	Rating **	M	Issue No.	66 (cont)
LM End	5.01	Issue Type +	Ma	Location *	
Category	Supplemental			GPS Latitude/Longitude	
				Start	End
Item	DWR UCIP LMA Responsibility			39.100898 °	39.100898 °
				-122.016078 °	-122.016078 °
DWR ID					

Comment Code

Inspector Comment

FS_ID:51796
DS_ID:17191
EP_NO: N/A
Repair Type: Non-Urgent
Crossing Status: Found
UCIP Comments: 5/2/2017 WS headwall and flapgate almost completely buried with only a small portion of the head wall visible. LS end is buried and unable to be located. (DWR Sutter Yard-AFreitag)10/17/2016 WS flap gate is still silted over and LS inlet is heavily vegetated and unable to be inspected. (DWR Sutter Yard-AFreitag)9/29/2016 Crossing has been downgraded from Urgent to Non-Urgent WS flap gate is closed shut due to sediment build up. For flood season flap gate is required to be closed. Need to coordinate with owner to remove sediment from WS to have WS flap gate be operable after flood season. (DWR UCIP - omagana)5/31/2016 WS pipe end was mostly underwater but it appears to still be silted over. (DWR Sutter Yard - afreitag)5/4/2015 WS flapgate is blocked by sediment and unable to open. LS inlet is hidden by sediment and heavy vegetation and unable to be located. Needs to be cleared. (DWR Sutter Yard - afreitag)6/17/2014 Same as last inspection. (DWR Sutter Yard - afreitag)12/16/2013 Same as last inspection. (DWR Sutter Yard - afreitag)7/16/2013 Same as last inspection. (DWR Sutter Yard - afreitag)10/11/2012 Pipe is clogged at both the inlet and outlet. Good candidate for video inspection. (DWR UCIP - wwylie)
FIELD_STRUCT_DESC: 48-inch corrugated metal drainage pipe through the levee, approximately 15 feet below the crown. Concrete headwalls on both the waterside (WS) and the landside (LS) ends with an automatic drainage gate on the WS. [Additional Reference(s): USACE Sacramento O&M Manual 132, October 1959, (HLM 5.12)].
FS Date: 5/2/2017 2:31:39 PM

Photo 3 of 3 : UCIP_FA_2017_51796_69028.jpg



Concrete U shaped headwall and flap gate on WS toe.

* Location LS : Land Side WS : Water Side CR : Crown	** Rating A : Acceptable M : Minimally Acceptable U : Unacceptable	+ Issue Type Ma : Maintenance Deficiency Ob : Design & System Obsolescence En : Enforcement
--	--	---

**Flood Control Project Maintenance
Levee Inspections**

Maintenance Issue Types Only, Levee Inspection Report By Mile - Fall 2017

Sutter Maintenance Yard Maintenance Area 0012

Waterway	Bank	Unit Miles	Inspection Start/End	Inspector
Unit No. 01 Colusa Drain	Left	11.06	09/13/2017 09/13/2017	Bob Duffey

LM Start	5.21	Rating **	A	Issue No.	42
LM End	5.21	Issue Type +	Ma	Location *	LS
Category	Earthen Levee			GPS Latitude/Longitude	
				Start	End
Item	Vegetation			39.103828 °	39.103828 °
				-122.016523 °	-122.016523 °
DWR ID	DWR_MA0012_01_f_2017_42				
Comment Code					
V1 : Control annual grass and weeds on the levee slopes and easements.					
Inspector Comment					
The vegetation was removed from both slopes.					

Photo 1 of 1 : FA_2017_MA0012_299_42_20171010_00150.jpg



View of no vegetation on both slopes.

LM Start	5.90	Rating **	A/W	Issue No.	67
LM End	5.90	Issue Type +	Ma	Location *	
Category	Supplemental			GPS Latitude/Longitude	
				Start	End
Item	DWR UCIP LMA Responsibility			39.113840 °	39.113840 °
				-122.017736 °	-122.017736 °
DWR ID					
Comment Code					
Inspector Comment					
FS_ID:51797 DS_ID:17190 EP_NO: N/A Repair Type: No Action Needed Crossing Status: Found UCIP Comments: 5/2/2017 Crossing appears to be in good condition. (DWR Sutter Yard- A Freitag)10/17/2016 Crossing appears to be in good condition. Pipe was field verified to be 48inch cmp. (DWR Sutter Yard- A Freitag)5/31/2016 Crossing appears to be in good condition.5/4/2015 Corssing appears to be in good condition. No noticeable issues to report.6/17/2014 Same as last inspection.12/16/2013 Same as last inspection.7/16/2013 Same as last inspection. FIELD_STRUCT_DESC: 48-inch corrugated metal drainage pipe through the levee, approximately 22 feet below the crown. Concrete headwalls at both the waterside (WS) and the landside (LS) ends with flap gate on the WS. 36-inch corrugated metal pipe (CMP) riser on the LS toe with steel pipe extension for overflow weir of LS ditch. Walkway and pump not associated with this crossing. (Automatic board order (ABO) issued as Permit No. 8234, 1972 - Glenn Irrigation District, for 36-inch, not 48-inch). [Additional Reference(s): USACE Sacramento O&M Manual 132, October 1959, (HLM 6.04, Drawing No. 50-4-3081, Sheet 16)]. FS Date: 5/2/2017 2:33:13 PM					

Photo 1 of 3 : UCIP_FA_2017_51797_69034.jpg



36-inch CM standpipe with steel pipe extension for weir on LS toe. pump not associated with storm drain crossing.

* Location		** Rating		+ Issue Type	
LS : Land Side	N/A : Not Applicable	A : Acceptable	N : Not Inspected/Rated	Ma : Maintenance Deficiency	
WS : Water Side		M : Minimally Acceptable	C : Corrected	Ob : Design & System Obsolescence	
CR : Crown		U : Unacceptable	A/W : Acceptable but Monitor & Maintain	En : Enforcement	

**Flood Control Project Maintenance
Levee Inspections**

Maintenance Issue Types Only, Levee Inspection Report By Mile - Fall 2017

Sutter Maintenance Yard Maintenance Area 0012

Waterway	Bank	Unit Miles	Inspection Start/End	Inspector
Unit No. 01 Colusa Drain	Left	11.06	09/13/2017 09/13/2017	Bob Duffey

LM Start	5.90	Rating **	A/W	Issue No.	67 (cont)
LM End	5.90	Issue Type +	Ma	Location *	
Category	Supplemental			GPS Latitude/Longitude	
				Start	End
Item	DWR UCIP LMA Responsibility			39.113840 °	39.113840 °
				-122.017736 °	-122.017736 °
DWR ID					

Comment Code

Inspector Comment

FS_ID:51797
DS_ID:17190
EP_NO: N/A
Repair Type: No Action Needed
Crossing Status: Found
UCIP Comments: 5/2/2017 Crossing appears to be in good condition. (DWR Sutter Yard- A Freitag) 10/17/2016 Crossing appears to be in good condition. Pipe was field verified to be 48 inch cmp. (DWR Sutter Yard- A Freitag) 5/31/2016 Crossing appears to be in good condition. 5/4/2015 Crossing appears to be in good condition. No noticeable issues to report. 6/17/2014 Same as last inspection. 12/16/2013 Same as last inspection. 7/16/2013 Same as last inspection.
FIELD_STRUCT_DESC: 48-inch corrugated metal drainage pipe through the levee, approximately 22 feet below the crown. Concrete headwalls at both the waterside (WS) and the landside (LS) ends with flap gate on the WS. 36-inch corrugated metal pipe (CMP) riser on the LS toe with steel pipe extension for overflow weir of LS ditch. Walkway and pump not associated with this crossing. (Automatic board order (ABO) issued as Permit No. 8234, 1972 - Glenn Irrigation District, for 36-inch, not 48-inch). [Additional Reference(s): USACE Sacramento O&M Manual 132, October 1959, (HLM 6.04, Drawing No. 50-4-3081, Sheet 16)].
FS Date: 5/2/2017 2:33:13 PM

LM Start	5.90	Rating **	A/W	Issue No.	67 (cont)
LM End	5.90	Issue Type +	Ma	Location *	

Photo 2 of 3 : UCIP_FA_2017_51797_69033.jpg



36-inch CM standpipe with steel pipe extension for weir on LS toe.

Photo 3 of 3 : UCIP_FA_2017_51797_69032.jpg



Flap gate in concrete U-shaped headwall at WS toe.

* Location LS : Land Side N/A : Not Applicable WS : Water Side CR : Crown		** Rating A : Acceptable M : Minimally Acceptable U : Unacceptable N : Not Inspected/Rated C : Corrected A/W : Acceptable but Monitor & Maintain		+ Issue Type Ma : Maintenance Deficiency Ob : Design & System Obsolescence En : Enforcement
--	--	---	--	---

**Flood Control Project Maintenance
Levee Inspections**

Maintenance Issue Types Only, Levee Inspection Report By Mile - Fall 2017

Sutter Maintenance Yard Maintenance Area 0012

Waterway	Bank	Unit Miles	Inspection Start/End	Inspector
Unit No. 01 Colusa Drain	Left	11.06	09/13/2017 09/13/2017	Bob Duffey

LM Start	5.96	Rating **	A/W	Issue No.	68 (cont)	
LM End	5.96	Issue Type +	Ma	Location *		
Category	Supplemental			GPS Latitude/Longitude		
				Start	End	
Item	DWR UCIP LMA Responsibility			39.114633 °	39.114633 °	
				-122.017848 °	-122.017848 °	
DWR ID						
Comment Code						
Inspector Comment						
FS_ID:51798						
DS_ID:17161						
EP_NO: 9390						
Repair Type: No Action Needed						
Crossing Status: Found						
UCIP Comments: 5/2/2017 Crossing appears to be in good condition.						
(DWR Sutter Yard- A Freitag)10/17/2016 Crossing appears to be in						
good condition. (DWR Sutter Yard- A Freitag)5/31/2016 Crossing						
appears to be in good condition.5/4/2015 Corssing appears to be in						
good condition. No noticeable issues to report.6/17/2014 Same as						
last inspection.12/16/2013 Same as last inspection.7/16/2013						
Same as last inspection.						
FIELD_STRUCT_DESC: 48-inch corrugated metal drainage pipe						
through the levee, 20.3 feet below the crown. Concrete headwall and						
cobble revetted spillway on the waterside (WS). Slide gate in a 60-inch						
corrugated metal pipe (CMP) riser on the WS slope. Concrete headwall						
located on the landside (LS). (48-inch pipe authorized under Automatic						
Board Order (ABO) issued as Permit No. 9390, 1974 - Annie D.						
Propffe). [Additional Reference(s): DWR Levee Log, 2005. USACE						
Sacramento O&M Manual 132, October 1959, (HLM 6.10)].						
FS Date: 5/2/2017 2:34:03 PM						

Photo 3 of 3 : UCIP_FA_2017_51798_69040.jpg



Concrete headwall with slide gate at LS toe.

* Location LS : Land Side N/A : Not Applicable WS : Water Side CR : Crown	** Rating A : Acceptable M : Minimally Acceptable U : Unacceptable N : Not Inspected/Rated C : Corrected A/W : Acceptable but Monitor & Maintain	+ Issue Type Ma : Maintenance Deficiency Ob : Design & System Obsolescence En : Enforcement
--	---	---

**Flood Control Project Maintenance
Levee Inspections**

Maintenance Issue Types Only, Levee Inspection Report By Mile - Fall 2017

Sutter Maintenance Yard Maintenance Area 0012

Waterway	Bank	Unit Miles	Inspection Start/End	Inspector
Unit No. 01 Colusa Drain	Left	11.06	09/13/2017 09/13/2017	Bob Duffey

LM Start	5.98	Rating **	A/W	Issue No.	70
LM End	5.98	Issue Type +	Ma	Location *	
Category	Supplemental			GPS Latitude/Longitude	
				Start	End
Item	DWR UCIP LMA Responsibility			39.114949 °	39.114949 °
				-122.017946 °	-122.017946 °
DWR ID					

Comment Code

Inspector Comment

FS_ID:51799
DS_ID:17162
EP_NO: 9390
Repair Type: No Action Needed
Crossing Status: Found
UCIP Comments: 5/31/2016 Replaced by DS ID#20715 pipe.5/4/2015 Crossing appears to be in good condition. No noticeable issues to report.6/17/2014 Same as last inspection.12/16/2013 Same as last inspection.7/16/2013 Same as last inspection.
FIELD_STRUCT_DESC: *REMOVED* 1 of 3: 18-inch steel drainage pipe through the levee, 4.4 feet below the crown. Cobble revetted sump on the waterside (WS). Siphon breaker in an 18-inch metal riser on the WS shoulder. Pump house at the landside (LS) toe. (Original O&M manual entry and Automatic Board Order (ABO) issued as Permit No. 9390, 1974 - Annie D. Propfe. Pipe removed and replaced with new 20-inch pipe [see DS_ID 20715] under Permit No. 13699, 1983 - Davis Ranches). [Additional Reference(s): DWR Levee Log, 2005. USACE Sacramento O&M Manual 132, October 1959, (HLM 6.13)].
FS Date: 5/2/2017 2:35:03 PM

LM Start	5.98	Rating **	A/W	Issue No.	70 (cont)
LM End	5.98	Issue Type +	Ma	Location *	

Photo 1 of 3 : UCIP_FA_2017_51799_69068.jpg



Siphon Breakers in risers on WS slope.

Photo 2 of 3 : UCIP_FA_2017_51799_69067.jpg



Pumphouse on LS slope.

* Location LS : Land Side N/A : Not Applicable WS : Water Side CR : Crown		** Rating A : Acceptable M : Minimally Acceptable U : Unacceptable		N : Not Inspected/Rated C : Corrected A/W : Acceptable but Monitor & Maintain		+ Issue Type Ma : Maintenance Deficiency Ob : Design & System Obsolescence En : Enforcement	
--	--	--	--	---	--	---	--

**Flood Control Project Maintenance
Levee Inspections**

Maintenance Issue Types Only, Levee Inspection Report By Mile - Fall 2017

Sutter Maintenance Yard Maintenance Area 0012

Waterway	Bank	Unit Miles	Inspection Start/End	Inspector
Unit No. 01 Colusa Drain	Left	11.06	09/13/2017 09/13/2017	Bob Duffey

LM Start	5.98	Rating **	A/W	Issue No.	70 (cont)
LM End	5.98	Issue Type +	Ma	Location *	
Category	Supplemental			GPS Latitude/Longitude	
				Start	End
Item	DWR UCIP LMA Responsibility			39.114949 °	39.114949 °
				-122.017946 °	-122.017946 °
DWR ID					

Comment Code

Inspector Comment

FS_ID:51799
DS_ID:17162
EP_NO: 9390
Repair Type: No Action Needed
Crossing Status: Found
UCIP Comments: 5/31/2016 Replaced by DS ID#20715 pipe.5/4/2015 Crossing appears to be in good condition. No noticeable issues to report.6/17/2014 Same as last inspection.12/16/2013 Same as last inspection.7/16/2013 Same as last inspection.
FIELD_STRUCT_DESC: *REMOVED* 1 of 3: 18-inch steel drainage pipe through the levee, 4.4 feet below the crown. Cobble revetted sump on the waterside (WS). Siphon breaker in an 18-inch metal riser on the WS shoulder. Pump house at the landside (LS) toe. (Original O&M manual entry and Automatic Board Order (ABO) issued as Permit No. 9390, 1974 - Annie D. Propfe. Pipe removed and replaced with new 20-inch pipe [see DS_ID 20715] under Permit No. 13699, 1983 - Davis Ranches). [Additional Reference(s): DWR Levee Log, 2005. USACE Sacramento O&M Manual 132, October 1959, (HLM 6.13)].
FS Date: 5/2/2017 2:35:03 PM

Photo 3 of 3 : UCIP_FA_2017_51799_69066.jpg



24-inch pipe on LS slope.

* Location	** Rating	+ Issue Type
LS : Land Side WS : Water Side CR : Crown	A : Acceptable M : Minimally Acceptable U : Unacceptable	Ma : Maintenance Deficiency Ob : Design & System Obsolescence En : Enforcement
N/A : Not Applicable	N : Not Inspected/Rated C : Corrected A/W : Acceptable but Monitor & Maintain	

**Flood Control Project Maintenance
Levee Inspections**

Maintenance Issue Types Only, Levee Inspection Report By Mile - Fall 2017

Sutter Maintenance Yard Maintenance Area 0012

Waterway	Bank	Unit Miles	Inspection Start/End	Inspector
Unit No. 01 Colusa Drain	Left	11.06	09/13/2017 09/13/2017	Bob Duffey

LM Start	5.98	Rating **	A/W	Issue No.	71 (cont)
LM End	5.98	Issue Type +	Ma	Location *	
Category	Supplemental			GPS Latitude/Longitude	
				Start	End
Item	DWR UCIP LMA Responsibility			39.114963 °	39.114963 °
				-122.017947 °	-122.017947 °
DWR ID					

Comment Code

Inspector Comment

FS_ID:51802
DS_ID:17198
EP_NO: 9390
Repair Type: No Action Needed
Crossing Status: Found
UCIP Comments: 5/31/2016 Replaced by DS ID#20716 pipe.5/4/2015 Corssing appears to be in good condition. No noticeable issues to report.6/17/2014 Same as last inspection.12/16/2013 Same as last inspection.7/16/2013 Same as last inspection.
FIELD_STRUCT_DESC: *REMOVED* 2 of 3: 18-inch steel drainage pipe through the levee, 4.4 feet below the crown. Cobble revetted sump located on the waterside (WS). Siphon breaker in an 18-inch metal riser on the WS shoulder. Pump house at the landside (LS) toe. (Original O&M manual entry and Automatic Board Order (ABO) issued as Permit No. 9390, 1974 - Annie D. Propfe. Pipe removed and replaced with new 20-inch pipe under Permit No. 13699, 1983 - Davis Ranches).
[Additional Reference(s): DWR Levee Log, 2005. USACE Sacramento O&M Manual 132, October 1959, (HLM 6.13)].
FS Date: 5/2/2017 2:37:11 PM

Photo 3 of 3 : UCIP_FA_2017_51802_69074.jpg



Pump for 20-inch pipe at left. See oil bouser and leakage around pumps.

* Location	** Rating	+ Issue Type
LS : Land Side WS : Water Side CR : Crown	A : Acceptable M : Minimally Acceptable U : Unacceptable	Ma : Maintenance Deficiency Ob : Design & System Obsolescence En : Enforcement
N/A : Not Applicable	N : Not Inspected/Rated C : Corrected A/W : Acceptable but Monitor & Maintain	

**Flood Control Project Maintenance
Levee Inspections**

Maintenance Issue Types Only, Levee Inspection Report By Mile - Fall 2017

Sutter Maintenance Yard Maintenance Area 0012

Waterway	Bank	Unit Miles	Inspection Start/End	Inspector
Unit No. 01 Colusa Drain	Left	11.06	09/13/2017 09/13/2017	Bob Duffey

LM Start	5.98	Rating **	M	Issue No.	73
LM End	5.98	Issue Type +	Ma	Location *	
Category	Supplemental			GPS Latitude/Longitude	
				Start	End
Item	DWR UCIP LMA Responsibility			39.114977 °	39.114977 °
				-122.017947 °	-122.017947 °
DWR ID					

Comment Code

Inspector Comment

FS_ID:51803
DS_ID:17199
EP_NO: 9390
Repair Type: Non-Urgent
Crossing Status: Found
UCIP Comments: 5/2/2017 Pipe appears to be in good condition. Minor erosion above the LS pump house. (DWR Sutter Yard- AFreitag)10/17/2016 Crossing appears to be in good condition. (DWR Sutter Yard- AFreitag)5/31/2016 Crossing appears to be in good condition.5/4/2015 Corssing appears to be in good condition. No noticeable issues to report.6/17/2014 Same as last inspection.12/16/2013 Same as last inspection.7/16/2013 Same as last inspection.10/11/2012 Minor oil leak on pump.
FIELD_STRUCT_DESC: 3 of 3: 18-inch steel drainage pipe through the levee, 4.4 feet below the crown. Cobble revetted sump located on the waterside (WS). Siphon breaker in a 16-inch metal riser on the WS shoulder. Pump house at the landside (LS) toe. (18-inch pipe authorized under Automatic Board Order (ABO) issued as Permit No. 9390, 1974 - Annie D. Propfe). [Additional Reference(s): DWR Levee Log, 2005. USACE Sacramento O&M Manual 132, October 1959, (HLM 6.13)].
FS Date: 5/2/2017 2:37:23 PM

LM Start	5.98	Rating **	M	Issue No.	73 (cont)
LM End	5.98	Issue Type +	Ma	Location *	

Photo 1 of 3 : UCIP_FA_2017_51803_69081.jpg



Pump house on LS slope.

Photo 2 of 3 : UCIP_FA_2017_51803_69080.jpg



Siphon breaker on WS shoulder.

* Location	** Rating	+ Issue Type
LS : Land Side WS : Water Side CR : Crown	A : Acceptable M : Minimally Acceptable U : Unacceptable	Ma : Maintenance Deficiency Ob : Design & System Obsolescence En : Enforcement
N/A : Not Applicable	N : Not Inspected/Rated C : Corrected A/W : Acceptable but Monitor & Maintain	

**Flood Control Project Maintenance
Levee Inspections**

Maintenance Issue Types Only, Levee Inspection Report By Mile - Fall 2017

Sutter Maintenance Yard Maintenance Area 0012

Waterway	Bank	Unit Miles	Inspection Start/End	Inspector
Unit No. 01 Colusa Drain	Left	11.06	09/13/2017 09/13/2017	Bob Duffey

LM Start	7.36	Rating **	A/W	Issue No.	41
LM End	7.52	Issue Type +	Ma	Location *	
Category	Supplemental			GPS Latitude/Longitude	
				Start	End
Item	2017 Storm Damage			39.133920 °	39.136240 °
				-122.022770 °	-122.022760 °
DWR ID	DWR_MA0012_01_f _ 2017_41				
Comment Code					
Inspector Comment					
Levee Evaluation Comments					
Description:					
Site ID No:6					
Site Designation:MA12-01					
Repair Type: Stability					
Rating:Critical					
Field Date:7/14/2017					
Notes: Site vegetation recently burned. Entire waterside of the levee is on a slip plane. Bulging on the toe of the levee. Same effect is beginning to be observed on the landside. Levee is between two channels of water. This site is also known as DWR_MA0012_01_R_2012_02 in the FSRP database.					

Photo 1 of 3 : LEVAL_FA_2017_6_1774.jpg



LM Start	7.36	Rating **	A/W	Issue No.	41 (cont)
LM End	7.52	Issue Type +	Ma	Location *	

Photo 2 of 3 : LEVAL_FA_2017_6_1775.jpg



* Location LS : Land Side N/A : Not Applicable WS : Water Side CR : Crown		** Rating A : Acceptable N : Not Inspected/Rated M : Minimally Acceptable C : Corrected U : Unacceptable A/W : Acceptable but Monitor & Maintain		+ Issue Type Ma : Maintenance Deficiency Ob : Design & System Obsolescence En : Enforcement
--	--	---	--	---

**Flood Control Project Maintenance
Levee Inspections**

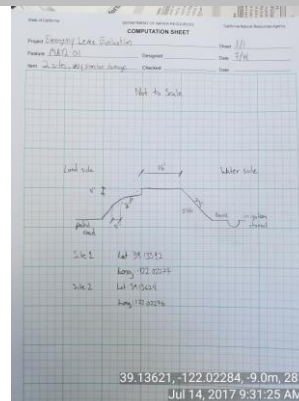
Maintenance Issue Types Only, Levee Inspection Report By Mile - Fall 2017

Sutter Maintenance Yard Maintenance Area 0012

Waterway	Bank	Unit Miles	Inspection Start/End	Inspector
Unit No. 01 Colusa Drain	Left	11.06	09/13/2017 09/13/2017	Bob Duffey

LM Start	7.36	Rating **	A/W	Issue No.	41 (cont)
LM End	7.52	Issue Type +	Ma	Location *	
Category	Supplemental			GPS Latitude/Longitude	
				Start	End
Item	2017 Storm Damage			39.133920 °	39.136240 °
				-122.022770 °	-122.022760 °
DWR ID	DWR_MA0012_01_f_2017_41				
Comment Code					
Inspector Comment					
Levee Evaluation Comments					
Description:					
Site ID No:6					
Site Designation:MA12-01					
Repair Type: Stability					
Rating:Critical					
Field Date:7/14/2017					
Notes: Site vegetation recently burned. Entire waterside of the levee is on a slip plane. Bulging on the toe of the levee. Same effect is beginning to be observed on the landside. Levee is between two channels of water. This site is also known as DWR_MA0012_01_R_2012_02 in the FSRP database.					

Photo 3 of 3 : LEVAL_FA_2017_6_1781.jpg



LM Start	9.02	Rating **	M	Issue No.	25
LM End	9.02	Issue Type +	Ma	Location *	WS
Category	Supplemental			GPS Latitude/Longitude	
				Start	End
Item	2015 USACE Erosion Survey, DRAFT			39.157957 °	39.158226 °
				-122.021950 °	-122.021950 °
DWR ID	DWR_MA0012_01_s_2016_25				
Comment Code					
Inspector Comment					
2011 - Erosion occurring upstream and downstream of an irrigation diversion structure. 2015: Site is part of the extended inventory, last inspected 2011. [2015 Site ID: SYC_9-3_L]					

No Photos

* Location LS : Land Side N/A : Not Applicable WS : Water Side CR : Crown		** Rating A : Acceptable M : Minimally Acceptable U : Unacceptable N : Not Inspected/Rated C : Corrected A/W : Acceptable but Monitor & Maintain		+ Issue Type Ma : Maintenance Deficiency Ob : Design & System Obsolescence En : Enforcement
--	--	---	--	---

**Flood Control Project Maintenance
Levee Inspections**

Maintenance Issue Types Only, Levee Inspection Report By Mile - Fall 2017

Sutter Maintenance Yard Maintenance Area 0012

Waterway	Bank	Unit Miles	Inspection Start/End	Inspector
Unit No. 01 Colusa Drain	Left	11.06	09/13/2017 09/13/2017	Bob Duffey

LM Start	9.03	Rating **	U	Issue No.	75
LM End	9.03	Issue Type +	Ma	Location *	
Category	Supplemental			GPS Latitude/Longitude	
				Start	End
Item	DWR UCIP LMA Responsibility			39.158097 °	39.158097 °
				-122.021706 °	-122.021706 °
DWR ID					

Comment Code

Inspector Comment

FS_ID:51806
DS_ID:17166
EP_NO: 9390
Repair Type: Urgent
Crossing Status: Found
UCIP Comments: 5/2/2017 Ws headwal still appears to be tilting away from the levee. No wheel to operate the WS slidegate. (DWR Sutter Yard- AFreitag)10/17/2016 WS concrete headwall is still tiltig away from the levee. (DWR Sutter Yard- AFreitag)5/31/216 Ws concrete headwall is still tilting away from the levee and towards the WS ditch. (DWR Sutter Yard - afreitag)5/4/2015 WS concrete headwall tilting away from the levee slope. (DWR Sutter Yard - afreitag)6/17/2014 Same as last inspection. (DWR Sutter Yard - afreitag)12/16/2013 Same as last inspection. (DWR Sutter Yard - afreitag)7/16/2013 Same as last inspection. (DWR Sutter Yard - afreitag)10/11/2012 Concrete Headwall tilting on WS slope. (DWR UCIP - wwylie)
FIELD_STRUCT_DESC: 36-inch corrugated metal drainage pipe through the levee, 15 feet below the crown. Concrete headwall, slide gate, and grouted revetment on the waterside (WS). Slide gate and concrete headwall on the landside (LS). (36-inch pipe authorized under Automatic Board Order (ABO) issued as Permit No. 9390, 1974 - Annie D. Propfe). [Additional Reference(s): DWR Levee Log, 2005. USACE Sacramento O&M Manual 132, October 1959, (HLM 9.24)].
FS Date: 5/2/2017 2:46:54 PM

LM Start	9.03	Rating **	U	Issue No.	75 (cont)
LM End	9.03	Issue Type +	Ma	Location *	

Photo 1 of 3 : UCIP_FA_2017_51806_69100.jpg



Tilting headwall on WS toe.

Photo 2 of 3 : UCIP_FA_2017_51806_69099.jpg



Slidegate on WS toe.

* Location	** Rating	+ Issue Type
LS : Land Side WS : Water Side CR : Crown	A : Acceptable M : Minimally Acceptable U : Unacceptable	Ma : Maintenance Deficiency Ob : Design & System Obsolescence En : Enforcement
N/A : Not Applicable	N : Not Inspected/Rated C : Corrected A/W : Acceptable but Monitor & Maintain	

**Flood Control Project Maintenance
Levee Inspections**

Maintenance Issue Types Only, Levee Inspection Report By Mile - Fall 2017

Sutter Maintenance Yard Maintenance Area 0012

Waterway	Bank	Unit Miles	Inspection Start/End	Inspector
Unit No. 01 Colusa Drain	Left	11.06	09/13/2017 09/13/2017	Bob Duffey

LM Start	9.03	Rating **	U	Issue No.	75 (cont)
LM End	9.03	Issue Type +	Ma	Location *	
Category	Supplemental			GPS Latitude/Longitude	
				Start	End
Item	DWR UCIP LMA Responsibility			39.158097 °	39.158097 °
				-122.021706 °	-122.021706 °
DWR ID					

Comment Code

Inspector Comment

FS_ID:51806
DS_ID:17166
EP_NO: 9390
Repair Type: Urgent
Crossing Status: Found
UCIP Comments: 5/2/2017 WS headwal still appears to be tilting away from the levee. No wheel to operate the WS slidegate. (DWR Sutter Yard- AFreitag)10/17/2016 WS concrete headwall is still tiltig away from the levee. (DWR Sutter Yard- AFreitag)5/31/216 WS concrete headwall is still tilting away from the levee and towards the WS ditch. (DWR Sutter Yard - afreitag)5/4/2015 WS concrete headwall tilting away from the levee slope. (DWR Sutter Yard - afreitag)6/17/2014 Same as last inspection. (DWR Sutter Yard - afreitag)12/16/2013 Same as last inspection. (DWR Sutter Yard - afreitag)7/16/2013 Same as last inspection. (DWR Sutter Yard - afreitag)10/11/2012 Concrete Headwall tilting on WS slope. (DWR UCIP - wwylie)
FIELD_STRUCT_DESC: 36-inch corrugated metal drainage pipe through the levee, 15 feet below the crown. Concrete headwall, slide gate, and grouted revetment on the waterside (WS). Slide gate and concrete headwall on the landside (LS). (36-inch pipe authorized under Automatic Board Order (ABO) issued as Permit No. 9390, 1974 - Annie D. Propfe). [Additional Reference(s): DWR Levee Log, 2005. USACE Sacramento O&M Manual 132, October 1959, (HLM 9.24)].
FS Date: 5/2/2017 2:46:54 PM

Photo 3 of 3 : UCIP_FA_2017_51806_69102.jpg



slide gate and headwall on LS toe.

LM Start	9.05	Rating **	C	Issue No.	52
LM End	9.26	Issue Type +	Ma	Location *	WS
Category	Earthen Levee			GPS Latitude/Longitude	
				Start	End
Item	Erosion / Bank Caving			39.158402 °	39.161462 °
				-122.021707 °	-122.021880 °

Comment Code

E2 : Schedule repair of erosion site prior to the next inspection.

Inspector Comment

The erosion was repaired along the waterside slope.

No Photos

* Location LS : Land Side N/A : Not Applicable WS : Water Side CR : Crown		** Rating A : Acceptable M : Minimally Acceptable U : Unacceptable		N : Not Inspected/Rated C : Corrected A/W : Acceptable but Monitor & Maintain		+ Issue Type Ma : Maintenance Deficiency Ob : Design & System Obsolescence En : Enforcement	
--	--	--	--	---	--	---	--

**Flood Control Project Maintenance
Levee Inspections**

Maintenance Issue Types Only, Levee Inspection Report By Mile - Fall 2017

Sutter Maintenance Yard Maintenance Area 0012

Waterway	Bank	Unit Miles	Inspection Start/End	Inspector
Unit No. 01 Colusa Drain	Left	11.06	09/13/2017 09/13/2017	Bob Duffey

LM Start	9.12	Rating **	U	Issue No.	77
LM End	9.12	Issue Type +	Ma	Location *	
Category	Supplemental			GPS Latitude/Longitude	
				Start	End
Item	DWR UCIP LMA Responsibility			39.159477 °	39.159477 °
				-122.021839 °	-122.021839 °
DWR ID					

Comment Code

Inspector Comment

FS_ID:51809
DS_ID:17167
EP_NO: 9389
Repair Type: Urgent
Crossing Status: Found
UCIP Comments: 5/2/2017 No repairs have been made to this crossing yet. WS flap gate is still disconnected from end of pipe and pipe is showing heavy signs of rust and deterioration as far in as i can see from the WS end. Pipe should be internally camera inspected and repaired/replaced. (DWR Sutter Yard- AFreitag)01/31/2017 Informal Notice of Violation (NOV) was sent out January 31, 2017 by DWR Flood Maintenance Office--owner needs to re-attach flap gate to drainage pipe and coordinate with CVFPB to address additional issue(s) identified in NOV. Owner has until Monday February 27th, 2017 to repond to DWR contact: Bryan Reniff. (refer to Official Notice for details). (DWR UCIP - O. Magana) 10/17/2016 WS flapgate has seperated from the pipe end. WS pipe end is showing signs of rust and deterioration. Needs a new flapgate or other means of closing off the pipe before flood season. (DWR Sutter Yard- AFreitag)5/31/2016 Crossing appears to be in good condition.5/4/2015 Corssing appears to be in good condition. No noticeable issues to report.6/17/2014 Same as last inspection.12/16/2013 Same as last inspection.7/16/2013 Same as last inspection.
FIELD_STRUCT_DESC: 36-inch corrugated metal drainage pipe through the levee, 15.4 feet below the crown. Concrete headwall and flap gate on the waterside (WS). Concrete headwall on the landside (LS). Pump on steel structure in slough on the LS. Pump discharges into a 42-inch corrugated metal pipe (CMP) riser. Service pole on ramp. Butterfly gate at inlet on the LS toe. (36-inch pipe authorized under Automatic Board Order (ABO) issued as Permit No. 9389, 1974 - Annie D. Propfe). [Additional Reference(s): DWR Levee Log, 2005. USACE Sacramento O&M Manual 132, October 1959, (HLM 9.33)].
FS Date: 5/2/2017 2:48:51 PM

Photo 1 of 3 : UCIP_FA_2017_51809_69112.jpg



Pumping plant on LS toe.

* Location	** Rating	+ Issue Type
LS : Land Side WS : Water Side CR : Crown	A : Acceptable M : Minimally Acceptable U : Unacceptable	Ma : Maintenance Deficiency Ob : Design & System Obsolescence En : Enforcement
N/A : Not Applicable	N : Not Inspected/Rated C : Corrected A/W : Acceptable but Monitor & Maintain	

**Flood Control Project Maintenance
Levee Inspections**

Maintenance Issue Types Only, Levee Inspection Report By Mile - Fall 2017

Sutter Maintenance Yard Maintenance Area 0012

Waterway	Bank	Unit Miles	Inspection Start/End	Inspector
Unit No. 01 Colusa Drain	Left	11.06	09/13/2017 09/13/2017	Bob Duffey

LM Start	9.12	Rating **	U	Issue No.	77 (cont)
LM End	9.12	Issue Type +	Ma	Location *	
Category	Supplemental			GPS Latitude/Longitude	
				Start	End
Item	DWR UCIP LMA Responsibility			39.159477 °	39.159477 °
				-122.021839 °	-122.021839 °
DWR ID					

Comment Code

Inspector Comment

FS_ID:51809
DS_ID:17167
EP_NO: 9389
Repair Type: Urgent
Crossing Status: Found
UCIP Comments: 5/2/2017 No repairs have been made to this crossing yet. WS flap gate is still disconnected from end of pipe and pipe is showing heavy signs of rust and deterioration as far in as i can see from the WS end. Pipe should be internally camera inspected and repaired/replaced. (DWR Sutter Yard- AFreitag)01/31/2017 Informal Notice of Violation (NOV) was sent out January 31, 2017 by DWR Flood Maintenance Office--owner needs to re-attach flap gate to drainage pipe and coordinate with CVFPB to address additional issue(s) identified in NOV. Owner has until Monday February 27th, 2017 to repond to DWR contact: Bryan Reniff. (refer to Official Notice for details). (DWR UCIP - O. Magana) 10/17/2016 WS flapgate has seperated from the pipe end. WS pipe end is showing signs of rust and deterioration. Needs a new flapgate or other means of closing off the pipe before flood season. (DWR Sutter Yard- AFreitag)5/31/2016 Crossing appears to be in good condition.5/4/2015 Corssing appears to be in good condition. No noticeable issues to report.6/17/2014 Same as last inspection.12/16/2013 Same as last inspection.7/16/2013 Same as last inspection.
FIELD_STRUCT_DESC: 36-inch corrugated metal drainage pipe through the levee, 15.4 feet below the crown. Concrete headwall and flap gate on the waterside (WS). Concrete headwall on the landside (LS). Pump on steel structure in slough on the LS. Pump discharges into a 42-inch corrugated metal pipe (CMP) riser. Service pole on ramp. Butterfly gate at inlet on the LS toe. (36-inch pipe authorized under Automatic Board Order (ABO) issued as Permit No. 9389, 1974 - Annie D. Propfe). [Additional Reference(s): DWR Levee Log, 2005. USACE Sacramento O&M Manual 132, October 1959, (HLM 9.33)].
FS Date: 5/2/2017 2:48:51 PM

Photo 2 of 3 : UCIP_FA_2017_51809_69111.jpg



Flap gate and headwall on WS toe.

* Location	** Rating	+ Issue Type
LS : Land Side WS : Water Side CR : Crown	A : Acceptable M : Minimally Acceptable U : Unacceptable	Ma : Maintenance Deficiency Ob : Design & System Obsolescence En : Enforcement
	N : Not Inspected/Rated C : Corrected A/W : Acceptable but Monitor & Maintain	

**Flood Control Project Maintenance
Levee Inspections**

Maintenance Issue Types Only, Levee Inspection Report By Mile - Fall 2017

Sutter Maintenance Yard Maintenance Area 0012

Waterway	Bank	Unit Miles	Inspection Start/End	Inspector
Unit No. 01 Colusa Drain	Left	11.06	09/13/2017 09/13/2017	Bob Duffey

LM Start	9.12	Rating **	U	Issue No.	77 (cont)
LM End	9.12	Issue Type +	Ma	Location *	
Category	Supplemental			GPS Latitude/Longitude	
				Start	End
Item	DWR UCIP LMA Responsibility			39.159477 °	39.159477 °
				-122.021839 °	-122.021839 °
DWR ID					

Comment Code

Inspector Comment

FS_ID:51809
DS_ID:17167
EP_NO: 9389
Repair Type: Urgent
Crossing Status: Found
UCIP Comments: 5/2/2017 No repairs have been made to this crossing yet. WS flap gate is still disconnected from end of pipe and pipe is showing heavy signs of rust and deterioration as far in as i can see from the WS end. Pipe should be internally camera inspected and repaired/replaced. (DWR Sutter Yard- AFreitag)01/31/2017 Informal Notice of Violation (NOV) was sent out January 31, 2017 by DWR Flood Maintenance Office--owner needs to re-attach flap gate to drainage pipe and coordinate with CVFPB to address additional issue(s) identified in NOV. Owner has until Monday February 27th, 2017 to repond to DWR contact: Bryan Reniff. (refer to Official Notice for details). (DWR UCIP - O. Magana) 10/17/2016 WS flapgate has seperated from the pipe end. WS pipe end is showing signs of rust and deterioration. Needs a new flapgate or other means of closing off the pipe before flood season. (DWR Sutter Yard- AFreitag)5/31/2016 Crossing appears to be in good condition.5/4/2015 Corssing appears to be in good condition. No noticeable issues to report.6/17/2014 Same as last inspection.12/16/2013 Same as last inspection.7/16/2013 Same as last inspection.
FIELD_STRUCT_DESC: 36-inch corrugated metal drainage pipe through the levee, 15.4 feet below the crown. Concrete headwall and flap gate on the waterside (WS). Concrete headwall on the landside (LS). Pump on steel structure in slough on the LS. Pump discharges into a 42-inch corrugated metal pipe (CMP) riser. Service pole on ramp. Butterfly gate at inlet on the LS toe. (36-inch pipe authorized under Automatic Board Order (ABO) issued as Permit No. 9389, 1974 - Annie D. Propfe). [Additional Reference(s): DWR Levee Log, 2005. USACE Sacramento O&M Manual 132, October 1959, (HLM 9.33)].
FS Date: 5/2/2017 2:48:51 PM

Photo 3 of 3 : UCIP_FA_2017_51809_69110.jpg



Corrugated metal pipe at outlet.

* Location	** Rating	+ Issue Type
LS : Land Side WS : Water Side CR : Crown	A : Acceptable M : Minimally Acceptable U : Unacceptable	Ma : Maintenance Deficiency Ob : Design & System Obsolescence En : Enforcement
N/A : Not Applicable	N : Not Inspected/Rated C : Corrected A/W : Acceptable but Monitor & Maintain	

**Flood Control Project Maintenance
Levee Inspections**

Maintenance Issue Types Only, Levee Inspection Report By Mile - Fall 2017

Sutter Maintenance Yard Maintenance Area 0012

Waterway	Bank	Unit Miles	Inspection Start/End	Inspector
Unit No. 01 Colusa Drain	Left	11.06	09/13/2017 09/13/2017	Bob Duffey

LM Start	10.45	Rating **	C	Issue No.	24
LM End	10.45	Issue Type +	Ma	Location *	LS
Category	Earthen Levee			GPS Latitude/Longitude	
				Start	End
Item	Animal Control			39.173798 °	39.173798 °
				-122.015097 °	-122.015097 °
DWR ID	DWR_MA0012_01_f _ 2016_24				
Comment Code					
A3 : No rodents visible, but rodent burrows visible; need to backfill and compact or grout burrows.					
Inspector Comment					
The rodent holes was repaired along the landside slope.					

No Photos

LM Start	10.92	Rating **	M	Issue No.	78
LM End	10.92	Issue Type +	Ma	Location *	
Category	Supplemental			GPS Latitude/Longitude	
				Start	End
Item	DWR UCIP LMA Responsibility			39.180039 °	39.180039 °
				-122.014266 °	-122.014266 °
DWR ID					
Comment Code					
Inspector Comment					
FS_ID:51810 DS_ID:17157 EP_NO: 9386 Repair Type: Non-Urgent Crossing Status: Found UCIP Comments: 5/2/2017 Abandoned- needs to be done properly. (DWR Sutter Yard- A Freitag)10/17/2016 Abandoned crossing. (DWR Sutter Yard- A Freitag)5/31/2016 Abandoned crossing. Both pipe ends and slide gate inside of riser are buried.5/4/2015 Both pipe ends and slide gate in riser are plugged with soil. Crossing is inoperable.6/17/2014 Same as last inspection.12/16/2013 Same as last inspection.7/16/2013 Same as last inspection.10/11/2012 Pipe plugged with soil on both ends as well as at slide gate on WS slope. Slide gate inoperable. FIELD_STRUCT_DESC: *ABANDONED* 24-inch corrugated metal drainage pipe through the levee, 8 feet below the crown. Slide gate in a 36-inch riser on the waterside (WS) shoulder. Levee turns eastward. (24-inch pipe [HLM 11.17] authorized under Automatic Board Order (ABO) issued as Permit No. 9386, 1974 - C. J. Wescott Jr.). [Additional Reference(s): DWR Levee Log, 2005. USACE Sacramento O&M Manual 132, October 1959, (HLM 11.17)]. FS Date: 5/2/2017 2:51:53 PM					

Photo 1 of 2 : UCIP_FA_2017_51810_69115.jpg



cover on 36-inch CMP standpipe on WS slope.

* Location	** Rating	+ Issue Type
LS : Land Side WS : Water Side CR : Crown	A : Acceptable M : Minimally Acceptable U : Unacceptable	Ma : Maintenance Deficiency Ob : Design & System Obsolescence En : Enforcement
	N : Not Inspected/Rated C : Corrected A/W : Acceptable but Monitor & Maintain	

**Flood Control Project Maintenance
Levee Inspections**

Maintenance Issue Types Only, Levee Inspection Report By Mile - Fall 2017

Sutter Maintenance Yard Maintenance Area 0012

Waterway	Bank	Unit Miles	Inspection Start/End	Inspector
Unit No. 01 Colusa Drain	Left	11.06	09/13/2017 09/13/2017	Bob Duffey

LM Start	10.92	Rating **	M	Issue No.	78 (cont)
LM End	10.92	Issue Type +	Ma	Location *	
Category	Supplemental			GPS Latitude/Longitude	
				Start	End
Item	DWR UCIP LMA Responsibility			39.180039 °	39.180039 °
				-122.014266 °	-122.014266 °
DWR ID					

Comment Code

Inspector Comment

FS_ID:51810
DS_ID:17157
EP_NO: 9386
Repair Type: Non-Urgent
Crossing Status: Found
UCIP Comments: 5/2/2017 Abandoned- needs to be done properly. (DWR Sutter Yard- A Freitag)10/17/2016 Abandoned crossing. (DWR Sutter Yard- A Freitag)5/31/2016 Abandoned crossing. Both pipe ends and slide gate inside of riser are buried.5/4/2015 Both pipe ends and slide gate in riser are plugged with soil. Crossing is inoperable.6/17/2014 Same as last inspection.12/16/2013 Same as last inspection.7/16/2013 Same as last inspection.10/11/2012 Pipe plugged with soil on both ends as well as at slide gate on WS slope. Slide gate inoperable.
FIELD_STRUCT_DESC: *ABANDONED* 24-inch corrugated metal drainage pipe through the levee, 8 feet below the crown. Slide gate in a 36-inch riser on the waterside (WS) shoulder. Levee turns eastward. (24-inch pipe [HLM 11.17] authorized under Automatic Board Order (ABO) issued as Permit No. 9386, 1974 - C. J. Wescott Jr.). [Additional Reference(s): DWR Levee Log, 2005. USACE Sacramento O&M Manual 132, October 1959, (HLM 11.17)].
FS Date: 5/2/2017 2:51:53 PM

Photo 2 of 2 : UCIP_FA_2017_51810_69114.jpg



Bent and broken actuator on slide gate in 36-inch CMP. Pipe appears to be filled with soil.

* Location LS : Land Side WS : Water Side CR : Crown	** Rating A : Acceptable M : Minimally Acceptable U : Unacceptable	+ Issue Type Ma : Maintenance Deficiency Ob : Design & System Obsolescence En : Enforcement
--	--	---