

Flood Control Project Maintenance Levee Inspections LMA District Cover Sheet

Sutter Maintenance Yard Maintenance Area 0005

	Spring (March - May)	Summer ** (June - August)	Fall (September - November)	Winter ** (December - February)
† Overall LMA Rating (Fall Only)				

**** Non-receipt of Summer or Winter Inspection Reports may effect overall annual rating.**

SPRING INSPECTIONS: Overall maintenance ratings are not determined for the spring inspection results. Individual maintenance deficiencies are rated using the same criteria in the spring and in the fall.

FALL INSPECTIONS: The overall maintenance rating shown above is based on operation and maintenance deficiencies identified within the attached unit inspection reports. This rating is not intended to be an indication of risk.

Comments

**Flood Control Project Maintenance
Levee Inspections
Unit Cover Sheet**

Sutter Maintenance Yard Maintenance Area 0005

Waterway			Bank	Unit Miles
Unit No. 01 Butte Creek			Left	15.08
	Spring (March - May)	Summer (June - August)	(September - November) Fall	Winter (December - February)
Unit Maintenance Rating (Fall Only)				
Date of Inspection	3/24/2021 - 3/24/2021			
DWR Inspector	Makar Sokol			
Accompanied By	Bob Duffey Sutter Maintenance Yard			

Summer & Winter Inspections

The Local Maintaining Agency (LMA) is responsible for summer and winter inspections. The LMA is required to submit a report regarding summer and winter inspections to the California Department of Water Resources (DWR).

DWR must be informed on the:

- a) completion of the inspection
- b) any changes other than the results of normal maintenance
- c) corrections to deficiencies noted in this report

If additional items are noted, further documentation of those items must also be submitted.

The LMA should submit this information to DWR using the LMA web application tool available at:

<http://cdec.water.ca.gov/lma.html>

If the LMA is unable to submit information on this webpage, please contact DWR for assistance.

The LMA should submit the information and any associated documentation by September 30 for summer inspections and March 31 for winter inspections.

**Flood Control Project Maintenance
Levee Inspections**

Levee Inspection Report By Mile - Spring 2021

Sutter Maintenance Yard Maintenance Area 0005

Waterway	Bank	Unit Miles	Inspection Start/End	Inspector
Unit No. 01 Butte Creek	Left	15.08	03/24/2021 03/24/2021	Makar Sokol

LM Start		Rating **	A	Issue No.	11	
LM End		Issue Type +	Ma	Location *		
Category	Earthen Levee			GPS Latitude/Longitude		
				Start		End
Item	Operations & Maintenance Manuals				°	°
					°	°
DWR ID	DWR_MA0005_01_s_2013_11					
Comment Code						
Inspector Comment						
The LMA has the O&M manuals.						

No Photos

LM Start		Rating **	A	Issue No.	12	
LM End		Issue Type +	Ma	Location *		
Category	Earthen Levee			GPS Latitude/Longitude		
				Start		End
Item	Emergency Supplies & Equipment				°	°
					°	°
DWR ID	DWR_MA0005_01_s_2013_12					
Comment Code						
Inspector Comment						
The LMA has adequate flood fight supplies and equipment.						

No Photos

LM Start		Rating **	A	Issue No.	13		
LM End		Issue Type +	Ma	Location *			
Category	Earthen Levee			GPS Latitude/Longitude			
				Start		End	
Item	Flood Preparedness & Training				°		°
					°		°
DWR ID	DWR_MA0005_01_s_2013_13						
Comment Code							
Inspector Comment							
The LMA completed flood fight training in 2019.							

No Photos

* Location LS : Land Side N/A : Not Applicable WS : Water Side CR : Crown	** Rating A : Acceptable M : Minimally Acceptable U : Unacceptable	N : Not Inspected/Rated C : Corrected A/W : Acceptable but Monitor & Maintain	+ Issue Type Ma : Maintenance Deficiency Ob : Design & System Obsolescence En : Enforcement
--	--	---	---

**Flood Control Project Maintenance
Levee Inspections**

Levee Inspection Report By Mile - Spring 2021

Sutter Maintenance Yard Maintenance Area 0005

Waterway	Bank	Unit Miles	Inspection Start/End	Inspector
Unit No. 01 Butte Creek	Left	15.08	03/24/2021 03/24/2021	Makar Sokol

LM Start	0.02	Rating **	M	Issue No.	60
LM End	0.12	Issue Type +	Ma	Location *	WS
Category	Earthen Levee			GPS Latitude/Longitude	
				Start	End
Item	Encroachments			39.697079 °	39.696127 °
				-121.773772 °	-121.775013 °
DWR ID	DWR_MA0005_01_f_2019_60				
Comment Code					
DE : Debris					
Inspector Comment					
Remove all of the pruninings and debris from the waterside slope and toe.					

No Photos

LM Start	0.07	Rating **	M	Issue No.	46
LM End	0.07	Issue Type +	Ma	Location *	LS
Category	Earthen Levee			GPS Latitude/Longitude	
				Start	End
Item	Slope Stability			39.696611 °	39.696611 °
				-121.774349 °	-121.774349 °
DWR ID	DWR_MA0005_01_f _ 2016_46				
Comment Code					
S2 : Repair the levee slope damaged by foot traffic and prevent access where possible.					
Inspector Comment					

Photo 1 of 1 : SP_2021_MA0005_196_46_20210224_00016.jpg



View of the damaged slope by foot traffic.

LM Start	0.17	Rating **	M	Issue No.	82
LM End	0.17	Issue Type +	Ma	Location *	LS
Category	Earthen Levee			GPS Latitude/Longitude	
				Start	End
Item	Encroachments			39.695619 °	39.695619 °
				-121.775674 °	-121.775674 °
DWR ID	DWR_MA0005_01_s_2020_82				
Comment Code					
TR : Tree or limb					
Inspector Comment					
Remove the fallen tree from landside slope and toe.					

No Photos

* Location LS : Land Side N/A : Not Applicable WS : Water Side CR : Crown	** Rating A : Acceptable M : Minimally Acceptable U : Unacceptable	N : Not Inspected/Rated C : Corrected A/W : Acceptable but Monitor & Maintain	+ Issue Type Ma : Maintenance Deficiency Ob : Design & System Obsolescence En : Enforcement
--	--	---	---

**Flood Control Project Maintenance
Levee Inspections**

Levee Inspection Report By Mile - Spring 2021

Sutter Maintenance Yard Maintenance Area 0005

Waterway	Bank	Unit Miles	Inspection Start/End	Inspector
Unit No. 01 Butte Creek	Left	15.08	03/24/2021 03/24/2021	Makar Sokol

LM Start	0.56	Rating **	M	Issue No.	903
LM End	0.56	Issue Type +	Ma	Location *	LS
Category	Earthen Levee			GPS Latitude/Longitude	
				Start	End
Item	Vegetation			39.690745 °	39.690745 °
				-121.777342 °	-121.777342 °
DWR ID	DWR_MA0005_01_s_2012_903				
Comment Code					
V4 : Elderberries are blocking visibility and flood fight capability.					
Inspector Comment					

No Photos

LM Start	0.58	Rating **	M	Issue No.	32
LM End	0.68	Issue Type +	Ma	Location *	LS
Category	Earthen Levee			GPS Latitude/Longitude	
				Start	End
Item	Trim / Thin Trees			39.690496 °	39.689137 °
				-121.777109 °	-121.776938 °
DWR ID	DWR_MA0005_01_s_2014_32				
Comment Code					
T2 : Thin trees to allow visibility of the ground and room to flood fight.					
Inspector Comment					
Trees smaller than 4-inches in diameter at chest height shall be removed from the landside slope and within ten feet of the landside toe.					

Photo 1 of 1 : SP_2021_MA0005_196_32_20210407_00079.jpg



View of the trees along the landside toe blocking visibility. Spring 2021.

LM Start	0.68	Rating **	M	Issue No.	44
LM End	0.77	Issue Type +	En	Location *	LS
Category	Earthen Levee			GPS Latitude/Longitude	
				Start	End
Item	Vegetation			39.689135 °	39.687968 °
				-121.776929 °	-121.777387 °
DWR ID	DWR_MA0005_01_s_2016_44				
Comment Code					
V6 : Landscaping					
Inspector Comment					

Photo 1 of 1 : SP_2021_MA0005_196_44_20210224_00015.jpg



View of oleanders along the landside toe.

* Location
LS : Land Side N/A : Not Applicable
WS : Water Side
CR : Crown

** Rating
A : Acceptable N : Not Inspected/Rated
M : Minimally Acceptable C : Corrected
U : Unacceptable A/W : Acceptable but Monitor & Maintain

+ Issue Type
Ma : Maintenance Deficiency
Ob : Design & System Obsolescence
En : Enforcement

**Flood Control Project Maintenance
Levee Inspections**

Levee Inspection Report By Mile - Spring 2021

Sutter Maintenance Yard Maintenance Area 0005

Waterway	Bank	Unit Miles	Inspection Start/End	Inspector
Unit No. 01 Butte Creek	Left	15.08	03/24/2021 03/24/2021	Makar Sokol

LM Start	0.79	Rating **	M	Issue No.	47
LM End	0.82	Issue Type +	En	Location *	LS
Category	Earthen Levee			GPS Latitude/Longitude	
				Start	End
Item	Vegetation			39.687676 °	39.687193 °
				-121.777419 °	-121.777461 °
DWR ID	DWR_MA0005_01_f_2019_47				
Comment Code					
V6 : Landscaping					
Inspector Comment					

Photo 1 of 1 : SP_2021_MA0005_196_47_20210224_00017.jpg



View of trees that require trimming along the landside slope. Fall 2019.

LM Start	0.90	Rating **	U	Issue No.	49
LM End	0.92	Issue Type +	En	Location *	LS
Category	Earthen Levee			GPS Latitude/Longitude	
				Start	End
Item	Encroachments			39.686087 °	39.685756 °
				-121.777555 °	-121.777540 °
DWR ID	DWR_MA0005_01_f _ 2016_49				
Comment Code					
FE : Fence					
Inspector Comment					

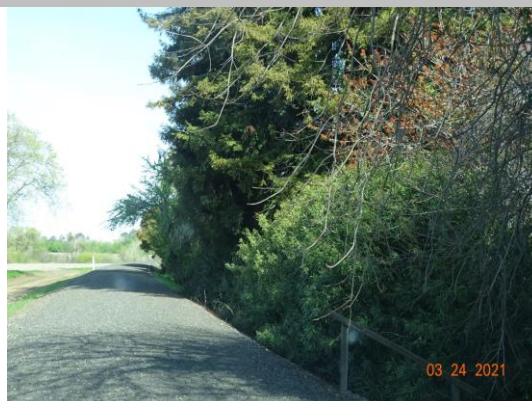
Photo 1 of 1 : SP_2021_MA0005_196_49_20210407_00080.jpg



View of the wood plank fence at the landside toe. Spring 2021.

LM Start	0.98	Rating **	U	Issue No.	50
LM End	1.00	Issue Type +	En	Location *	LS
Category	Earthen Levee			GPS Latitude/Longitude	
				Start	End
Item	Vegetation			39.684843 °	39.684606 °
				-121.777132 °	-121.776975 °
DWR ID	DWR_MA0005_01_f _ 2016_50				
Comment Code					
V6 : Landscaping					
Inspector Comment					
Oleanders are blocking visibility.					

Photo 1 of 1 : SP_2021_MA0005_196_50_20210407_00081.jpg



View of the landscaping along the landside toe. Spring 2021.

* Location
LS : Land Side N/A : Not Applicable
WS : Water Side
CR : Crown

** Rating
A : Acceptable N : Not Inspected/Rated
M : Minimally Acceptable C : Corrected
U : Unacceptable A/W : Acceptable but Monitor & Maintain

+ Issue Type
Ma : Maintenance Deficiency
Ob : Design & System Obsolescence
En : Enforcement

**Flood Control Project Maintenance
Levee Inspections**

Levee Inspection Report By Mile - Spring 2021

Sutter Maintenance Yard Maintenance Area 0005

Waterway	Bank	Unit Miles	Inspection Start/End	Inspector
Unit No. 01 Butte Creek	Left	15.08	03/24/2021 03/24/2021	Makar Sokol

LM Start	1.01	Rating **	C	Issue No.	51
LM End	1.01	Issue Type +	Ma	Location *	LS
Category	Earthen Levee			GPS Latitude/Longitude	
				Start	End
Item	Trim / Thin Trees			39.684497 °	39.684497 °
				-121.776905 °	-121.776905 °
DWR ID	DWR_MA0005_01_f _ 2016_51				
Comment Code					
T1 : Trim trees to at least five feet above ground level.					
Inspector Comment					

No Photos

LM Start	1.11	Rating **	M	Issue No.	52
LM End	1.14	Issue Type +	Ma	Location *	LS
Category	Earthen Levee			GPS Latitude/Longitude	
				Start	End
Item	Trim / Thin Trees			39.683208 °	39.682695 °
				-121.776279 °	-121.776325 °
DWR ID	DWR_MA0005_01_f_2016_52				
Comment Code					
T1 : Trim trees to at least five feet above ground level.					
Inspector Comment					

No Photos

LM Start	1.16	Rating **	M	Issue No.	43
LM End	1.24	Issue Type +	En	Location *	LS
Category	Earthen Levee			GPS Latitude/Longitude	
				Start	End
Item	Vegetation			39.682402 °	39.681322 °
				-121.776405 °	-121.776506 °
DWR ID	DWR_MA0005_01_s_2016_43				
Comment Code					
V6 : Landscaping					
Inspector Comment					

Photo 1 of 1 : SP_2021_MA0005_196_43_20210224_00014.jpg



View of the overgrown vegetation at the landside toe.

*** Location**
 LS : Land Side N/A : Not Applicable
 WS : Water Side
 CR : Crown

**** Rating**
 A : Acceptable N : Not Inspected/Rated
 M : Minimally Acceptable C : Corrected
 U : Unacceptable A/W : Acceptable but Monitor & Maintain

+ Issue Type
 Ma : Maintenance Deficiency
 Ob : Design & System Obsolescence
 En : Enforcement

**Flood Control Project Maintenance
Levee Inspections**

Levee Inspection Report By Mile - Spring 2021

Sutter Maintenance Yard Maintenance Area 0005

Waterway	Bank	Unit Miles	Inspection Start/End	Inspector
Unit No. 01 Butte Creek	Left	15.08	03/24/2021 03/24/2021	Makar Sokol

LM Start	1.24	Rating **	U	Issue No.	42
LM End	1.26	Issue Type +	En	Location *	LS
Category	Earthen Levee			GPS Latitude/Longitude	
				Start	End
Item	Encroachments			39.681305 °	39.681044 °
				-121.776533 °	-121.776547 °
DWR ID	DWR_MA0005_01_s _ 2016_42				
Comment Code					
FE : Fence					
Inspector Comment					

Photo 1 of 1 : SP_2021_MA0005_196_42_20210224_00013.jpg



View of the wood plank fence at the landside toe.

LM Start	1.30	Rating **	U	Issue No.	41
LM End	1.36	Issue Type +	En	Location *	LS
Category	Earthen Levee			GPS Latitude/Longitude	
				Start	End
Item	Encroachments			39.680452 °	39.679551 °
				-121.776667 °	-121.776904 °
DWR ID	DWR_MA0005_01_s _ 2016_41				
Comment Code					
FE : Fence					
Inspector Comment					
Wood plank fencing across multiple properties.					

Photo 1 of 1 : SP_2021_MA0005_196_41_20210224_00012.jpg



View of the fence along the landside toe. Spring 2020.

LM Start	1.52	Rating **	C	Issue No.	53
LM End	1.52	Issue Type +	En	Location *	LS
Category	Earthen Levee			GPS Latitude/Longitude	
				Start	End
Item	Encroachments			39.677240 °	39.677240 °
				-121.777521 °	-121.777521 °
DWR ID	DWR_MA0005_01_f _ 2016_53				
Comment Code					
DE : Debris					
Inspector Comment					

No Photos

* Location
LS : Land Side N/A : Not Applicable
WS : Water Side
CR : Crown

** Rating
A : Acceptable N : Not Inspected/Rated
M : Minimally Acceptable C : Corrected
U : Unacceptable A/W : Acceptable but Monitor & Maintain

+ Issue Type
Ma : Maintenance Deficiency
Ob : Design & System Obsolescence
En : Enforcement

**Flood Control Project Maintenance
Levee Inspections**

Levee Inspection Report By Mile - Spring 2021

Sutter Maintenance Yard Maintenance Area 0005

Waterway	Bank	Unit Miles	Inspection Start/End	Inspector
Unit No. 01 Butte Creek	Left	15.08	03/24/2021 03/24/2021	Makar Sokol

LM Start	1.53	Rating **	M	Issue No.	30
LM End	1.53	Issue Type +	En	Location *	LS
Category	Earthen Levee			GPS Latitude/Longitude	
				Start	End
Item	Encroachments			39.677130 °	39.677130 °
				-121.777583 °	-121.777583 °
DWR ID	DWR_MA0005_01_f_2014_30				
Comment Code					
EQ : Equipment					
Inspector Comment					

Photo 1 of 1 : SP_2021_MA0005_196_30_20210224_00008.jpg



View of the sprinkler pipe and equipment along the landside toe. Spring 2020.

LM Start	1.58	Rating **	C	Issue No.	73
LM End	1.68	Issue Type +	Ma	Location *	WS
Category	Supplemental			GPS Latitude/Longitude	
				Start	End
Item	2017 USACE Erosion Survey			39.676588 °	39.675280 °
				-121.777977 °	-121.779005 °
DWR ID	DWR_MA0005_01_f _ 2018_73				
Comment Code					
Inspector Comment					
2017 Site ID: BTC 1.8 L					
Status: Eroding New					
2017 Field Notes: Long vertical scarp on toe.					
Site History:					

No Photos

LM Start	1.60	Rating **	C	Issue No.	71
LM End	1.64	Issue Type +	Ma	Location *	WS
Category	Supplemental			GPS Latitude/Longitude	
				Start	End
Item	2017 Storm Damage			39.676298 °	39.675818 °
				-121.778272 °	-121.778630 °
DWR ID	MA5-N-01				
Comment Code					
Inspector Comment					
Planned For Repair. Site ID No:224 Site Designation:MA5-N-01 Erosion site at the waterside bank.					

No Photos

* Location LS : Land Side N/A : Not Applicable WS : Water Side CR : Crown	** Rating A : Acceptable M : Minimally Acceptable U : Unacceptable	N : Not Inspected/Rated C : Corrected A/W : Acceptable but Monitor & Maintain	+ Issue Type Ma : Maintenance Deficiency Ob : Design & System Obsolescence En : Enforcement
--	--	---	---

**Flood Control Project Maintenance
Levee Inspections**

Levee Inspection Report By Mile - Spring 2021

Sutter Maintenance Yard Maintenance Area 0005

Waterway	Bank	Unit Miles	Inspection Start/End	Inspector
Unit No. 01 Butte Creek	Left	15.08	03/24/2021 03/24/2021	Makar Sokol

LM Start	1.66	Rating **	M	Issue No.	1
LM End	1.66	Issue Type +	En	Location *	LS
Category	Earthen Levee			GPS Latitude/Longitude	
				Start	End
Item	Encroachments			39.675528 °	39.675528 °
				-121.778642 °	-121.778642 °
DWR ID	DWR_MA0005_01_s_2012_1				
Comment Code					
MA : Material					
Inspector Comment					
The materials and equipment should be moved ten feet away from the landside toe.					

Photo 1 of 1 : SP_2021_MA0005_196_1_20210224_00001.jpg



View of the construction supply on pallets.

LM Start	1.71	Rating **	M	Issue No.	81
LM End	1.71	Issue Type +	En	Location *	LS
Category	Earthen Levee			GPS Latitude/Longitude	
				Start	End
Item	Encroachments			39.674961 °	39.674961 °
				-121.779216 °	-121.779216 °
DWR ID	DWR_MA0005_01_s_2020_81				
Comment Code					
PR : Prunings					
Inspector Comment					

No Photos

LM Start	1.83	Rating **	M	Issue No.	54
LM End	1.83	Issue Type +	En	Location *	LS
Category	Earthen Levee			GPS Latitude/Longitude	
				Start	End
Item	Encroachments			39.673252 °	39.673252 °
				-121.779817 °	-121.779817 °
DWR ID	DWR_MA0005_01_f_2020_54				
Comment Code					
PR : Prunings					
Inspector Comment					

No Photos

* Location LS : Land Side N/A : Not Applicable WS : Water Side CR : Crown	** Rating A : Acceptable M : Minimally Acceptable U : Unacceptable	N : Not Inspected/Rated C : Corrected A/W : Acceptable but Monitor & Maintain	+ Issue Type Ma : Maintenance Deficiency Ob : Design & System Obsolescence En : Enforcement
--	--	---	---

**Flood Control Project Maintenance
Levee Inspections**

Levee Inspection Report By Mile - Spring 2021

Sutter Maintenance Yard Maintenance Area 0005

Waterway	Bank	Unit Miles	Inspection Start/End	Inspector
Unit No. 01 Butte Creek	Left	15.08	03/24/2021 03/24/2021	Makar Sokol

LM Start	2.09	Rating **	M	Issue No.	10
LM End	2.09	Issue Type +	En	Location *	LS
Category	Earthen Levee			GPS Latitude/Longitude	
				Start	End
Item	Encroachments			39.670112 °	39.670112 °
				-121.782012 °	-121.782012 °
DWR ID	DWR_MA0005_01_s_2016_10				
Comment Code					
FE : Fence					
Inspector Comment					
No permit was found for the gate.					

Photo 1 of 1 : SP_2021_MA0005_196_10_20210224_00005.jpg



View of the unpermitted gate. Spring 2020.

LM Start	2.20	Rating **	M	Issue No.	48
LM End	2.20	Issue Type +	En	Location *	LS
Category	Earthen Levee			GPS Latitude/Longitude	
				Start	End
Item	Encroachments			39.668632 °	39.668632 °
				-121.782464 °	-121.782464 °
DWR ID	DWR_MA0005_01_f_2019_48				
Comment Code					
PR : Prunings					
Inspector Comment					

No Photos

LM Start	2.26	Rating **	M	Issue No.	61
LM End	2.26	Issue Type +	En	Location *	LS
Category	Earthen Levee			GPS Latitude/Longitude	
				Start	End
Item	Encroachments			39.667732 °	39.667732 °
				-121.782717 °	-121.782717 °
DWR ID	DWR_MA0005_01_f_2019_61				
Comment Code					
PR : Prunings					
Inspector Comment					
Remove the prunings from the landside toe.					

No Photos

* Location LS : Land Side N/A : Not Applicable WS : Water Side CR : Crown	** Rating A : Acceptable M : Minimally Acceptable U : Unacceptable	N : Not Inspected/Rated C : Corrected A/W : Acceptable but Monitor & Maintain	+ Issue Type Ma : Maintenance Deficiency Ob : Design & System Obsolescence En : Enforcement
--	--	---	---

**Flood Control Project Maintenance
Levee Inspections**

Levee Inspection Report By Mile - Spring 2021

Sutter Maintenance Yard Maintenance Area 0005

Waterway	Bank	Unit Miles	Inspection Start/End	Inspector
Unit No. 01 Butte Creek	Left	15.08	03/24/2021 03/24/2021	Makar Sokol

LM Start	2.54	Rating **	M	Issue No.	9
LM End	2.54	Issue Type +	Ma	Location *	LS
Category	Earthen Levee			GPS Latitude/Longitude	
				Start	End
Item	Slope Stability			39.663876 °	39.663876 °
				-121.784014 °	-121.784014 °
DWR ID	DWR_MA0005_01_f_2012_9				
Comment Code					
S3 : Repair the levee slope damaged by vehicle traffic and prevent access where possible.					
Inspector Comment					

Photo 1 of 1 : SP_2021_MA0005_196_9_20210224_00004.jpg



View of the damaged landside slope due to vehicle traffic. Fall 2020.

LM Start	2.82	Rating **	C	Issue No.	45
LM End	2.82	Issue Type +	En	Location *	LS
Category	Earthen Levee			GPS Latitude/Longitude	
				Start	End
Item	Encroachments			39.660115 °	39.660115 °
				-121.785194 °	-121.785194 °
DWR ID	DWR_MA0005_01_f _ 2020_45				
Comment Code					
PR : Prunings					
Inspector Comment					

No Photos

LM Start	3.06	Rating **	M	Issue No.	37
LM End	3.06	Issue Type +	En	Location *	LS
Category	Earthen Levee			GPS Latitude/Longitude	
				Start	End
Item	Encroachments			39.656911 °	39.656911 °
				-121.787097 °	-121.787097 °
DWR ID	DWR_MA0005_01_f_2015_37				
Comment Code					
PR : Prunings					
Inspector Comment					
Remove the prunings from the landside toe.					

Photo 1 of 1 : SP_2021_MA0005_196_37_20210224_00010.jpg



View of the prunings along the landside toe. Fall 2020.

* Location LS : Land Side N/A : Not Applicable WS : Water Side CR : Crown	** Rating A : Acceptable M : Minimally Acceptable U : Unacceptable	N : Not Inspected/Rated C : Corrected A/W : Acceptable but Monitor & Maintain	+ Issue Type Ma : Maintenance Deficiency Ob : Design & System Obsolescence En : Enforcement
--	--	---	---

**Flood Control Project Maintenance
Levee Inspections**

Levee Inspection Report By Mile - Spring 2021

Sutter Maintenance Yard Maintenance Area 0005

Waterway	Bank	Unit Miles	Inspection Start/End	Inspector
Unit No. 01 Butte Creek	Left	15.08	03/24/2021 03/24/2021	Makar Sokol

LM Start	3.21	Rating **	M	Issue No.	38
LM End	3.21	Issue Type +	En	Location *	LS
Category	Earthen Levee			GPS Latitude/Longitude	
				Start	End
Item	Encroachments			39.654938 °	39.654938 °
				-121.787892 °	-121.787892 °
DWR ID	DWR_MA0005_01_f_2015_38				
Comment Code					
PR : Prunings					
Inspector Comment					
Remove the prunings from the landside toe.					

Photo 1 of 1 : SP_2021_MA0005_196_38_20210224_00011.jpg



View of the prunings along the landside toe. Fall 2020.

LM Start	3.43	Rating **	M	Issue No.	40
LM End	3.43	Issue Type +	En	Location *	LS
Category	Earthen Levee			GPS Latitude/Longitude	
				Start	End
Item	Encroachments			39.651837 °	39.651837 °
				-121.789158 °	-121.789158 °
DWR ID	DWR_MA0005_01_f_2020_40				
Comment Code					
PR : Prunings					
Inspector Comment					

No Photos

*** Location**
LS : Land Side N/A : Not Applicable
WS : Water Side
CR : Crown

**** Rating**
A : Acceptable N : Not Inspected/Rated
M : Minimally Acceptable C : Corrected
U : Unacceptable A/W : Acceptable but Monitor & Maintain

+ Issue Type
Ma : Maintenance Deficiency
Ob : Design & System Obsolescence
En : Enforcement

**Flood Control Project Maintenance
Levee Inspections**

Levee Inspection Report By Mile - Spring 2021

Sutter Maintenance Yard Maintenance Area 0005

Waterway	Bank	Unit Miles	Inspection Start/End	Inspector
Unit No. 01 Butte Creek	Left	15.08	03/24/2021 03/24/2021	Makar Sokol

LM Start	3.61	Rating **	M	Issue No.	2
LM End	3.61	Issue Type +	En	Location *	
Category	Supplemental			GPS Latitude/Longitude	
				Start	End
Item	DWR UCIP Field Study			39.649522 °	39.649522 °
				-121.787965 °	-121.787965 °
DWR ID	1615				

Comment Code

Inspector Comment

FS_ID:59679
DS_ID:1615
EP_NO: N/A
Repair Type: Non-Urgent
Crossing Status: Found
UCIP Comments: 07/30/2020 UCIP staff received CVFPB Enforcement Case No. 9708 Compliance Letter confirming repair of screw gate by Durham Mutual Water Company. CVFPB Enforcement Case No. 2019-9708 has been closed. Owner is seeking permit for 30-inch pipe. UCIP record will be update the UCIP record when the permit is issued by the CVFPB. (O. Magana - DWR UCIP)06/05/2019 Durham Mutual Water Company fixed broken slide gate by replacing a stem. Operating wheel is missing. Crossing downgraded to non-urgent. (O. Yakimov - DWR UCIP)10/5/2018 Observed pipe running during inspection. Pipe is used to drain water from LS concrete box to WS. Field structure description was updated to show structure type as drainage pipe. Confirmed that the concrete box on LS receives water from a pipe running along the LS toe from orchards upstream and distributes water between 3 pipes, one of which crosses levee at an angle. Missing closure device on WS. Screw gate stuck in open position inside CMP riser located on WS shoulder and is not operable. (O. Yakimov - DWR)5/15/2017 WS slide gate stem bent and gate is stuck in the open position. Outlet in the the concrete box on the WS berm is opened and allowed water to free flow through the pipe during the Jan/Feb 2017 high water events. Either the screw gate needs to be repaired or a flap gate added to the outlet in the concrete box to not allow high water flows though the levee. Pipe is believed to be owned and operated by Duhram Mutual Water Company at 1807 Duhram Dayton HWY, PO Box 612, Duhram CA 95938 (530)342-9324. (A. Freitag - DWR Sutter Yard) 11/15/2016 Abandoned- slide gate is opened and inoperable. Needs to be properly abandoned. (A. Freitag - DWR Sutter Yard)05/09/2016 Abandoned crossing. Slide gate stem bent and wheel is missing. (A. Freitag - DWR Sutter Yard)08/05/2015 Abandoned crossing. Slide gate stem is bent and gate is inoperable. Needs to be properly abandoned. (A. Freitag - DWR Sutter Yard)12/08/2014 Same as last inspection. (A. Freitag - DWR Sutter Yard)06/11/2014 Same as last inspection. (A. Freitag - DWR Sutter Yard)11/20/2013 Same as last inspection. (A. Freitag - DWR Sutter Yard)05/29/2013 Same as last inspection. (A. Freitag - DWR Sutter Yard)10/30/2012 Pipe appears to be abandoned. Slide gate open and inoperable. Pipe should be properly abandoned. (W. Wylie - DWR UCIP)
FIELD_STRUCT_DESC: 30-inch corrugated metal drainage pipe through the levee, 10.5 feet below the crown. Slide gate in a corrugated metal riser on the waterside (WS) slope. Concrete distribution box on the landside (LS) toe and concrete overflow and siphon box at the edge of berm. [Additional Reference(s): DWR Levee Log, 1990 (HLM 3.69).

Photo 1 of 3 : UCIP_SP_2021_59679_79693.jpg



View of levee crown at crossing

* Location	** Rating	+ Issue Type
LS : Land Side WS : Water Side CR : Crown	A : Acceptable M : Minimally Acceptable U : Unacceptable	Ma : Maintenance Deficiency Ob : Design & System Obsolescence En : Enforcement
N/A : Not Applicable	N : Not Inspected/Rated C : Corrected A/W : Acceptable but Monitor & Maintain	

**Flood Control Project Maintenance
Levee Inspections**

Levee Inspection Report By Mile - Spring 2021

Sutter Maintenance Yard Maintenance Area 0005

Waterway	Bank	Unit Miles	Inspection Start/End	Inspector
Unit No. 01 Butte Creek	Left	15.08	03/24/2021 03/24/2021	Makar Sokol

USACE Sacramento O&M Manual, Unit 516 - Upper Butte Creek - Part No. 2, April 1960 (Station 368+17)].
FS Date: 6/5/2019 1:45:00 PM

LM Start	3.61	Rating **	M	Issue No.	2 (cont)
LM End	3.61	Issue Type +	En	Location *	

Photo 2 of 3 : UCIP_SP_2021_59679_79687.jpg



CMP riser with slide gate on WS shoulder

LM Start	3.61	Rating **	M	Issue No.	2 (cont)
LM End	3.61	Issue Type +	En	Location *	

Photo 3 of 3 : UCIP_SP_2021_59679_79690.jpg



CMP riser WS shoulder

* Location LS : Land Side N/A : Not Applicable WS : Water Side CR : Crown	** Rating A : Acceptable M : Minimally Acceptable U : Unacceptable	N : Not Inspected/Rated C : Corrected A/W : Acceptable but Monitor & Maintain	+ Issue Type Ma : Maintenance Deficiency Ob : Design & System Obsolescence En : Enforcement
--	--	---	---

**Flood Control Project Maintenance
Levee Inspections**

Levee Inspection Report By Mile - Spring 2021

Sutter Maintenance Yard Maintenance Area 0005

Waterway	Bank	Unit Miles	Inspection Start/End	Inspector
Unit No. 01 Butte Creek	Left	15.08	03/24/2021 03/24/2021	Makar Sokol

LM Start	3.87	Rating **	M	Issue No.	3	
LM End	3.87	Issue Type +	Ma	Location *		
Category	Supplemental			GPS Latitude/Longitude		
				Start		End
Item	DWR UCIP LMA Responsibility			39.646217 °		39.646217 °
				-121.785431 °		-121.785431 °
DWR ID	1616					

Comment Code

Inspector Comment

FS_ID:58165
DS_ID:1616
EP_NO: N/A
Repair Type: Non-Urgent
Crossing Status: Found
UCIP Comments: 06/05/2019 No issues recorded during inspection. (O.Yakimov - DWR UCIP)
05/15/2017 Crossing appears to be in good condition. LS inlet is located in the Distribution box on the LS toe. This is an overflow pipe used to regulate water levels in side the box. Pipe has been selected to be internally cleaned and inspected as part fo the DMP project. (A. Freitag - DWR Sutter Yard)11/15/2016 Crossing appears to be in good condition. (A. Freitag - DWR Sutter Yard)05/09/2016 Crossing appears to be in good condition. (A. Freitag - DWR Sutter Yard)08/05/2015 WS pipe end is being overgrown by trees and other vegetation. Needs to be cleared back. (A. Freitag - DWR Sutter Yard)12/08/2014 Same as last inspection. (A. Freitag - DWR Sutter Yard)06/11/2014 Same as last inspection. (A. Freitag - DWR Sutter Yard)11/20/2013 Same as last inspection. (A. Freitag - DWR Sutter Yard)05/29/2013 Same as last inspection. (A. Freitag - DWR Sutter Yard)
FIELD_STRUCT_DESC: 24-inch corrugated metal drainage pipe through the levee, 12.0 feet below the crown. Slide gate in a corrugated metal riser on the waterside (WS) slope. Flap gate on the WS toe. Inlet on the landside (LS) toe. [Additional Reference(s): DWR Levee Log, 1990 (HLM 3.95). USACE Sacramento O&M Manual, Unit 516 - Upper Butte Creek - Part No. 2, April 1960, (Station 381+36)].
FS Date: 6/5/2019 2:07:00 PM

Photo 1 of 3 : UCIP_SP_2021_58165_79700.jpg



CMP riser and slide gate on WS shoulder

* Location LS : Land Side N/A : Not Applicable WS : Water Side CR : Crown	** Rating A : Acceptable M : Minimally Acceptable U : Unacceptable	N : Not Inspected/Rated C : Corrected A/W : Acceptable but Monitor & Maintain	+ Issue Type Ma : Maintenance Deficiency Ob : Design & System Obsolescence En : Enforcement
--	--	--	---

**Flood Control Project Maintenance
Levee Inspections**

Levee Inspection Report By Mile - Spring 2021

Sutter Maintenance Yard Maintenance Area 0005

Waterway	Bank	Unit Miles	Inspection Start/End	Inspector
Unit No. 01 Butte Creek	Left	15.08	03/24/2021 03/24/2021	Makar Sokol

LM Start	3.87	Rating **	M	Issue No.	3 (cont)	
LM End	3.87	Issue Type +	Ma	Location *		
Category	Supplemental			GPS Latitude/Longitude		
				Start		End
Item	DWR UCIP LMA Responsibility			39.646217 °	39.646217 °	
				-121.785431 °	-121.785431 °	
DWR ID	1616					

Photo 2 of 3 : UCIP_SP_2021_58165_79696.jpg



View inside of concrete distribution box on LS

LM Start	3.87	Rating **	M	Issue No.	3 (cont)
LM End	3.87	Issue Type +	Ma	Location *	

Photo 3 of 3 : UCIP_SP_2021_58165_79699.jpg



Steel welded pipe inside of concrete distribution box on LS goes toward the levee

* Location LS : Land Side N/A : Not Applicable WS : Water Side CR : Crown	** Rating A : Acceptable M : Minimally Acceptable U : Unacceptable	N : Not Inspected/Rated C : Corrected A/W : Acceptable but Monitor & Maintain	+ Issue Type Ma : Maintenance Deficiency Ob : Design & System Obsolescence En : Enforcement
--	--	---	---

**Flood Control Project Maintenance
Levee Inspections**

Levee Inspection Report By Mile - Spring 2021

Sutter Maintenance Yard Maintenance Area 0005

Waterway	Bank	Unit Miles	Inspection Start/End	Inspector
Unit No. 01 Butte Creek	Left	15.08	03/24/2021 03/24/2021	Makar Sokol

LM Start	3.87	Rating **	M	Issue No.	4
LM End	3.87	Issue Type +	Ma	Location *	
Category	Supplemental			GPS Latitude/Longitude	
				Start	End
Item	DWR UCIP LMA Responsibility			39.646194 °	39.646194 °
				-121.785418 °	-121.785418 °
DWR ID	1617				

Comment Code

Inspector Comment

FS_ID:58166
DS_ID:1617
EP_NO: N/A
Repair Type: Non-Urgent
Crossing Status: Found
UCIP Comments: 06/05/2019 No issues recorded during inspection. (O.Yakimov - DWR UCIP)05/15/2017 Crossing appears to be in good condition. (A. Freitag - DWR Sutter Yard)11/15/2016 Crossing appears to be in good condition. (A. Freitag - DWR Sutter Yard)05/09/2016 Crossing appears to be in good condition. (A. Freitag - DWR Sutter Yard)08/05/2015 Crossing appears in good condition. No noticeable issues to report. (A. Freitag - DWR Sutter Yard)12/08/2014 Same as last inspection. (A. Freitag - DWR Sutter Yard)06/11/2014 Same as last inspection. (A. Freitag - DWR Sutter Yard)11/20/2013 Same as last inspection. (A. Freitag - DWR Sutter Yard)05/29/2013 Same as last inspection. (A. Freitag - DWR Sutter Yard)
FIELD_STRUCT_DESC: 24-inch corrugated metal irrigation siphon pipe through the levee, 16.5 feet below the crown. Slide gate in corrugated metal riser on the waterside (WS) slope. Pipe appears to be currently used for irrigation purposes. 4-foot by 8-foot concrete distribution box on the landside (LS), 40 feet from the LS toe.
[Additional Reference(s): DWR Levee Log, 1990 (HLM 3.95). USACE Sacramento O&M Manual, Unit 516 - Upper Butte Creek - Part No. 2, April 1960, (Station 381+42), pipe varies in size: 24-inch pipe (right bank), 24-inch through Butte Creek, and 3-foot by 3-foot (36-inch by 36-inch) culvert (left bank)].
FS Date: 6/5/2019 2:29:00 PM

Photo 1 of 3 : UCIP_SP_2021_58166_79701.jpg



CMP riser and slide gate on WS shoulder

* Location LS : Land Side N/A : Not Applicable WS : Water Side CR : Crown	** Rating A : Acceptable M : Minimally Acceptable U : Unacceptable N : Not Inspected/Rated C : Corrected A/W : Acceptable but Monitor & Maintain	+ Issue Type Ma : Maintenance Deficiency Ob : Design & System Obsolescence En : Enforcement
--	---	---

**Flood Control Project Maintenance
Levee Inspections**

Levee Inspection Report By Mile - Spring 2021

Sutter Maintenance Yard Maintenance Area 0005

Waterway	Bank	Unit Miles	Inspection Start/End	Inspector
Unit No. 01 Butte Creek	Left	15.08	03/24/2021 03/24/2021	Makar Sokol

LM Start	3.87	Rating **	M	Issue No.	4 (cont)	
LM End	3.87	Issue Type +	Ma	Location *		
Category	Supplemental			GPS Latitude/Longitude		
				Start		End
Item	DWR UCIP LMA Responsibility			39.646194 °		39.646194 °
				-121.785418 °		-121.785418 °
DWR ID	1617					

Photo 2 of 3 : UCIP_SP_2021_58166_79703.jpg



Inside view of CMP riser on WS shoulder

LM Start	3.87	Rating **	M	Issue No.	4 (cont)
LM End	3.87	Issue Type +	Ma	Location *	

Photo 3 of 3 : UCIP_SP_2021_58166_67932.jpg



Concrete distribution box on LS, 40-feet from LS toe

* Location LS : Land Side N/A : Not Applicable WS : Water Side CR : Crown	** Rating A : Acceptable M : Minimally Acceptable U : Unacceptable	N : Not Inspected/Rated C : Corrected A/W : Acceptable but Monitor & Maintain	+ Issue Type Ma : Maintenance Deficiency Ob : Design & System Obsolescence En : Enforcement
--	--	---	---

**Flood Control Project Maintenance
Levee Inspections**

Levee Inspection Report By Mile - Spring 2021

Sutter Maintenance Yard Maintenance Area 0005

Waterway	Bank	Unit Miles	Inspection Start/End	Inspector
Unit No. 01 Butte Creek	Left	15.08	03/24/2021 03/24/2021	Makar Sokol

LM Start	3.90	Rating **	M	Issue No.	7
LM End	3.90	Issue Type +	En	Location *	
Category	Supplemental			GPS Latitude/Longitude	
				Start	End
Item	DWR UCIP Field Study			39.645846 °	39.645846 °
				-121.785155 °	-121.785155 °
DWR ID	1619				

Comment Code

Inspector Comment

FS_ID:58206
DS_ID:1619
EP_NO: 6544-A
Repair Type: Non-Urgent
Crossing Status: Indicator Found
UCIP Comments: 05/15/2017 Crossing appears to be in good condition. (A. Freitag - DWR Sutter Yard)11/15/2016 Crossing appears to be in good condition. (A. Freitag - DWR Sutter Yard)05/09/2016 Crossing appears to be in good condition. (A. Freitag - DWR Sutter Yard)08/05/2015 Pipe is suspected to cross inside of bridge. (A. Freitag - DWR Sutter Yard)12/08/2014 Same as last inspection. (A. Freitag - DWR Sutter Yard)06/11/2014 Same as last inspection. (A. Freitag - DWR Sutter Yard)11/20/2013 Same as last inspection. (A. Freitag - DWR Sutter Yard)05/29/2013 Same as last inspection. (A. Freitag - DWR Sutter Yard)10/30/2012 Pipeline should be marked where pipe crosses levee as it is 4-feet below the surface. (W. Wylie - DWR UCIP)
FIELD_STRUCT_DESC: 6-inch concrete encased steel high pressure gas pipeline through the levee, 4 feet below the crown. 8-inch diameter Pacific Gas & Electric Company (PG&E) gas access manhole located on the south side of the road, 250 feet east of the levee crown. (6-inch gas line authorized under Permit No. 6544-A, 1969 - Pacific Gas and Electric [PG&E]) [Additional Reference(s): DWR Levee Log, 1990].
FS Date: 5/31/2017 12:46:00 PM

LM Start	3.90	Rating **	M	Issue No.	7 (cont)
LM End	3.90	Issue Type +	En	Location *	

Photo 1 of 2 : UCIP_SP_2021_58206_67936.jpg



PG&E access lid on south edge of roadway.

Photo 2 of 2 : UCIP_SP_2021_58206_67935.jpg



Location of PG&E access lid 250-feet east of levee crown on south side of roadway.

* Location	** Rating	+ Issue Type
LS : Land Side N/A : Not Applicable WS : Water Side CR : Crown	A : Acceptable M : Minimally Acceptable U : Unacceptable N : Not Inspected/Rated C : Corrected A/W : Acceptable but Monitor & Maintain	Ma : Maintenance Deficiency Ob : Design & System Obsolescence En : Enforcement

**Flood Control Project Maintenance
Levee Inspections**

Levee Inspection Report By Mile - Spring 2021

Sutter Maintenance Yard Maintenance Area 0005

Waterway	Bank	Unit Miles	Inspection Start/End	Inspector
Unit No. 01 Butte Creek	Left	15.08	03/24/2021 03/24/2021	Makar Sokol

LM Start	4.11	Rating **	C	Issue No.	68
LM End	4.11	Issue Type +	En	Location *	LS
Category	Earthen Levee			GPS Latitude/Longitude	
				Start	End
Item	Encroachments			39.643315 °	39.643315 °
				-121.783010 °	-121.783010 °
DWR ID	DWR_MA0005_01_s _ 2019_68				
Comment Code					
PR : Prunings					
Inspector Comment					

No Photos

LM Start	4.13	Rating **	M	Issue No.	27
LM End	4.13	Issue Type +	En	Location *	LS
Category	Earthen Levee			GPS Latitude/Longitude	
				Start	End
Item	Encroachments			39.643100 °	39.643100 °
				-121.782827 °	-121.782827 °
DWR ID	DWR_MA0005_01_s _ 2017_27				
Comment Code					
EQ : Equipment					
Inspector Comment					

No Photos

LM Start	4.65	Rating **	M	Issue No.	66
LM End	4.65	Issue Type +	Ma	Location *	LS
Category	Earthen Levee			GPS Latitude/Longitude	
				Start	End
Item	Encroachments			39.636645 °	39.636645 °
				-121.777703 °	-121.777703 °
DWR ID	DWR_MA0005_01_s _ 2019_66				
Comment Code					
TR : Tree or limb					
Inspector Comment					
The tree limbs should be removed from the landside slope.					

No Photos

* Location LS : Land Side N/A : Not Applicable WS : Water Side CR : Crown	** Rating A : Acceptable M : Minimally Acceptable U : Unacceptable	N : Not Inspected/Rated C : Corrected A/W : Acceptable but Monitor & Maintain	+ Issue Type Ma : Maintenance Deficiency Ob : Design & System Obsolescence En : Enforcement
--	--	---	---

**Flood Control Project Maintenance
Levee Inspections**

Levee Inspection Report By Mile - Spring 2021

Sutter Maintenance Yard Maintenance Area 0005

Waterway	Bank	Unit Miles	Inspection Start/End	Inspector
Unit No. 01 Butte Creek	Left	15.08	03/24/2021 03/24/2021	Makar Sokol

LM Start	5.51	Rating **	M	Issue No.	58
LM End	5.51	Issue Type +	Ma	Location *	LS
Category	Earthen Levee			GPS Latitude/Longitude	
				Start	End
Item	Encroachments			39.625172 °	39.625172 °
				-121.772028 °	-121.772028 °
DWR ID	DWR_MA0005_01_s _ 2021_58				
Comment Code					
TR : Tree or limb					
Inspector Comment					

No Photos

* Location LS : Land Side N/A : Not Applicable WS : Water Side CR : Crown	** Rating A : Acceptable M : Minimally Acceptable U : Unacceptable	N : Not Inspected/Rated C : Corrected A/W : Acceptable but Monitor & Maintain	+ Issue Type Ma : Maintenance Deficiency Ob : Design & System Obsolescence En : Enforcement
--	--	---	---

**Flood Control Project Maintenance
Levee Inspections**

Levee Inspection Report By Mile - Spring 2021

Sutter Maintenance Yard Maintenance Area 0005

Waterway	Bank	Unit Miles	Inspection Start/End	Inspector
Unit No. 01 Butte Creek	Left	15.08	03/24/2021 03/24/2021	Makar Sokol

LM Start	5.56	Rating **	M	Issue No.	8
LM End	5.56	Issue Type +	Ma	Location *	
Category	Supplemental			GPS Latitude/Longitude	
				Start	End
Item	DWR UCIP LMA Responsibility			39.624559 °	39.624559 °
				-121.772141 °	-121.772141 °
DWR ID	1620				

Comment Code

Inspector Comment

FS_ID:58207
DS_ID:1620
EP_NO: N/A
Repair Type: Non-Urgent
Crossing Status: Found
UCIP Comments: 05/23/2019 (O. Magana - DWR UCIP)05/15/2017 Abandoned and needs to be done properly. A sink hole formed in the WS toe road and revealed the location of the WS pipe end. Sink hole will need to be repaired before the next high water season but the pipe has been selected to be internally cleaned and camera inspected as part of the DMP project so it will have needed to be excavated along the WS end anyways. (A. Freitag - DWR Sutter Yard)11/15/2016 Abandoned. Needs cover for the standpipe. (A. Freitag - DWR Sutter Yard)05/09/2016 Abandoned pipe. Needs a cover for the standpipe. (A. Freitag - DWR Sutter Yard)08/05/2015 Abandoned crossing. Covers need to be made for tops of standpipes to prevent falls. (A. Freitag - DWR Sutter Yard)12/08/2014 Same as last inspection. (A. Freitag - DWR Sutter Yard)06/11/2014 Same as last inspection. (A. Freitag - DWR Sutter Yard)11/19/2013 Same as last inspection. (A. Freitag - DWR Sutter Yard)05/29/2013 Same as last inspection. Land owner said pipes are abandoned and no longer used. Covers should be made for top of standpipe to prevent falls. Pipes should be properly abandoned. (A. Freitag - DWR Sutter Yard)10/30/2012 Pipe 1/2 filled with soil at slide gate end. (W. Wylie - DWR UCIP) FIELD_STRUCT_DESC: *ABANDONED* 1 of 2: 36-inch drainage pipe through the levee, 11 feet below the crown. Slide gate in a 54-inch corrugated metal riser on the waterside (WS) slope. Concrete "U" headwall on the landside (LS). [Additional Reference(s): DWR Levee Log, 1990 (HLM 5.66). Sacramento O&M Manual, Unit 516 - Upper Butte Creek - Part No. 2, April 1960 (Station 470+00)].
FS Date: 5/23/2019 5:10:00 PM

Photo 1 of 2 : UCIP_SP_2021_58207_67941.jpg



Headwall at LS toe.

* Location LS : Land Side N/A : Not Applicable WS : Water Side CR : Crown	** Rating A : Acceptable M : Minimally Acceptable U : Unacceptable	N : Not Inspected/Rated C : Corrected A/W : Acceptable but Monitor & Maintain	+ Issue Type Ma : Maintenance Deficiency Ob : Design & System Obsolescence En : Enforcement
--	--	---	---

**Flood Control Project Maintenance
Levee Inspections**

Levee Inspection Report By Mile - Spring 2021

Sutter Maintenance Yard Maintenance Area 0005

Waterway	Bank	Unit Miles	Inspection Start/End	Inspector
Unit No. 01 Butte Creek	Left	15.08	03/24/2021 03/24/2021	Makar Sokol

LM Start	5.56	Rating **	M	Issue No.	8 (cont)
LM End	5.56	Issue Type +	Ma	Location *	
Category	Supplemental			GPS Latitude/Longitude	
				Start	End
Item	DWR UCIP LMA Responsibility			39.624559 °	39.624559 °
				-121.772141 °	-121.772141 °
DWR ID	1620				

Photo 2 of 2 : UCIP_SP_2021_58207_67940.jpg



54-inch CMP riser and slide gate on WS shoulder.

* Location LS : Land Side N/A : Not Applicable WS : Water Side CR : Crown	** Rating A : Acceptable N : Not Inspected/Rated M : Minimally Acceptable C : Corrected U : Unacceptable A/W : Acceptable but Monitor & Maintain	+ Issue Type Ma : Maintenance Deficiency Ob : Design & System Obsolescence En : Enforcement
--	---	---

**Flood Control Project Maintenance
Levee Inspections**

Levee Inspection Report By Mile - Spring 2021

Sutter Maintenance Yard Maintenance Area 0005

Waterway	Bank	Unit Miles	Inspection Start/End	Inspector
Unit No. 01 Butte Creek	Left	15.08	03/24/2021 03/24/2021	Makar Sokol

LM Start	5.56	Rating **	M	Issue No.	14
LM End	5.56	Issue Type +	Ma	Location *	
Category	Supplemental		GPS Latitude/Longitude		
			Start	End	
Item	DWR UCIP LMA Responsibility		39.624559 °	39.624559 °	
			-121.772141 °	-121.772141 °	
DWR ID	1768				

Comment Code

Inspector Comment

FS_ID:58212
DS_ID:1768
EP_NO: N/A
Repair Type: Non-Urgent
Crossing Status: Found
UCIP Comments: 05/23/2019 (O. Magana - DWR UCIP)05/15/2017 Abandoned and needs to be done properly. A sink hole formed in the WS toe road and revealed the location of the WS pipe end. Sink hole will need to be repaired before the next high water season but the pipe has been selected to be internally cleaned and camera inspected as part of the DMP project so it will have needed to be excavated along the WS end anyways. (A. Freitag - DWR Sutter Yard)11/15/2016 Abandoned. Needs standpipe cover. (A. Freitag - DWR Sutter Yard)05/09/2016 Abandoned pipe. Needs a cover for standpipe. (A. Freitag - DWR Sutter Yard)08/05/2015 Abandoned pipes. Need covers made for tops of standpipes to prevent falls. (A. Freitag - DWR Sutter Yard) 12/08/2014 Same as last inspection. (A. Freitag - DWR Sutter Yard)06/11/2014 Same as last inspection. (A. Freitag - DWR Sutter Yard)11/19/2013 Same as last inspection. (A. Freitag - DWR Sutter Yard)05/29/2013 Same as last inspection. Land owner said pipes are abandoned and no longer used. Covers should be made for top of standpipe to prevent falls. Pipes should be properly abandoned. (A. Freitag - DWR Sutter Yard)10/30/2012 Pipe 1/2 filled with soil at slide gate on WS. (W. Wylie - DWR UCIP)
FIELD_STRUCT_DESC: *ABANDONED* 2 of 2: 36-inch corrugated metal drainage pipe through the levee, 11 feet below the crown. Slide gate in a 54-inch corrugated metal riser on the waterside (WS) slope. Concrete "U" shaped headwall on the landside (LS). [Additional Reference(s): DWR Levee Log, 1990 (HLM 5.66). Sacramento O&M Manual, Unit 516 - Upper Butte Creek - Part No. 2, April 1960 (Station 470+00)].
FS Date: 5/23/2019 5:08:00 PM

Photo 1 of 3 : UCIP_SP_2021_58212_67939.jpg



Headwall at LS toe.

* Location LS : Land Side N/A : Not Applicable WS : Water Side CR : Crown	** Rating A : Acceptable M : Minimally Acceptable U : Unacceptable N : Not Inspected/Rated C : Corrected A/W : Acceptable but Monitor & Maintain	+ Issue Type Ma : Maintenance Deficiency Ob : Design & System Obsolescence En : Enforcement
--	---	---

**Flood Control Project Maintenance
Levee Inspections**

Levee Inspection Report By Mile - Spring 2021

Sutter Maintenance Yard Maintenance Area 0005

Waterway	Bank	Unit Miles	Inspection Start/End	Inspector
Unit No. 01 Butte Creek	Left	15.08	03/24/2021 03/24/2021	Makar Sokol

LM Start	5.56	Rating **	M	Issue No.	14 (cont)	
LM End	5.56	Issue Type +	Ma	Location *		
Category	Supplemental			GPS Latitude/Longitude		
				Start	End	
Item	DWR UCIP LMA Responsibility			39.624559 °	39.624559 °	
				-121.772141 °	-121.772141 °	
DWR ID	1768					

Photo 2 of 3 : UCIP_SP_2021_58212_67938.jpg



Headwall at LS toe.

LM Start	5.56	Rating **	M	Issue No.	14 (cont)
LM End	5.56	Issue Type +	Ma	Location *	

Photo 3 of 3 : UCIP_SP_2021_58212_67937.jpg



Slide gate at bottom of cmp riser.

LM Start	5.69	Rating **	M	Issue No.	55
LM End	6.23	Issue Type +	En	Location *	LS
Category	Earthen Levee			GPS Latitude/Longitude	
				Start	End
Item	Encroachments			39.622766 °	39.615666 °
				-121.773159 °	-121.777353 °
DWR ID	DWR_MA0005_01_s_2015_55				
Comment Code					
DT : Ditch					
Inspector Comment					

Photo 1 of 1 : SP_2021_MA0005_196_55_20210224_00021.jpg



View of the irrigation ditch along the landside toe. Spring 2020.

* Location		** Rating		+ Issue Type	
LS : Land Side	N/A : Not Applicable	A : Acceptable	N : Not Inspected/Rated	Ma : Maintenance Deficiency	
WS : Water Side		M : Minimally Acceptable	C : Corrected	Ob : Design & System Obsolescence	
CR : Crown		U : Unacceptable	A/W : Acceptable but Monitor & Maintain	En : Enforcement	

**Flood Control Project Maintenance
Levee Inspections**

Levee Inspection Report By Mile - Spring 2021

Sutter Maintenance Yard Maintenance Area 0005

Waterway	Bank	Unit Miles	Inspection Start/End	Inspector
Unit No. 01 Butte Creek	Left	15.08	03/24/2021 03/24/2021	Makar Sokol

LM Start	5.75	Rating **	M	Issue No.	15
LM End	5.75	Issue Type +	En	Location *	
Category	Supplemental			GPS Latitude/Longitude	
				Start	End
Item	DWR UCIP Field Study			39.621955 °	39.621955 °
				-121.773633 °	-121.773633 °
DWR ID	1622				
Comment Code					
Inspector Comment					
FS_ID:58173 DS_ID:1622 EP_NO: N/A Repair Type: Non-Urgent Crossing Status: Indicator Found UCIP Comments: 05/15/2017 Unable to locate. (A. Freitag - DWR Sutter Yard)11/15/2016 Unable to locate. The concrete fill in the LS toe channel appears to just be erosion protection. (A. Freitag - DWR Sutter Yard)08/05/2015 Unable to locate. (A. Freitag - DWR Sutter Yard)12/08/2014 Same as last inspection. (A. Freitag - DWR Sutter Yard)06/11/2014 Same as last inspection. (A. Freitag - DWR Sutter Yard)11/19/2013 Same as last inspection. (A. Freitag - DWR Sutter Yard)05/29/2013 Same as last inspection. (A. Freitag - DWR Sutter Yard) FIELD_STRUCT_DESC: 18-inch corrugated metal drainage pipe through the levee, 15 feet below the crown, indicator found. Concrete headwall and flap gate on the waterside (WS). Concrete fill in channel on the landside (LS) toe is a good indicator of the pipe location. [Additional Reference(s): DWR Levee Log, 1990 (HLM 5.85). Sacramento O&M Manual, Unit 516 - Upper Butte Creek - Part No. 2, April 1960, 18-inch pipe referenced only in USACE As-Built Drawing No. 50-4-3367, Exhibit B, Sheet 8, April 1957, (Station 480+25)]. FS Date: 5/31/2017 1:06:00 PM					

Photo 1 of 1 : UCIP_SP_2021_58173_11616.jpg



Concrete fill on LS toe a good indicator for location of pipe.

LM Start	5.81	Rating **	U	Issue No.	56
LM End	5.81	Issue Type +	Ma	Location *	LS
Category	Earthen Levee			GPS Latitude/Longitude	
				Start	End
Item	Erosion / Bank Caving			39.621261 °	39.621261 °
				-121.773973 °	-121.773973 °
DWR ID	DWR_MA0005_01_f_2016_56				
Comment Code					
E2 : Schedule repair of erosion site prior to the next inspection.					
Inspector Comment					

Photo 1 of 1 : SP_2021_MA0005_196_56_20210224_00022.jpg



View of the erosion at the landside toe. Spring 2020.

* Location LS : Land Side N/A : Not Applicable WS : Water Side CR : Crown	** Rating A : Acceptable M : Minimally Acceptable U : Unacceptable	N : Not Inspected/Rated C : Corrected A/W : Acceptable but Monitor & Maintain	+ Issue Type Ma : Maintenance Deficiency Ob : Design & System Obsolescence En : Enforcement
--	--	---	---

**Flood Control Project Maintenance
Levee Inspections**

Levee Inspection Report By Mile - Spring 2021

Sutter Maintenance Yard Maintenance Area 0005

Waterway	Bank	Unit Miles	Inspection Start/End	Inspector
Unit No. 01 Butte Creek	Left	15.08	03/24/2021 03/24/2021	Makar Sokol

LM Start	7.58	Rating **	M	Issue No.	16
LM End	7.58	Issue Type +	Ma	Location *	
Category	Supplemental			GPS Latitude/Longitude	
				Start	End
Item	DWR UCIP LMA Responsibility			39.597725 °	39.597725 °
				-121.787257 °	-121.787257 °
DWR ID	1628				

Comment Code

Inspector Comment

FS_ID:58208
DS_ID:1628
EP_NO: N/A
Repair Type: Non-Urgent
Crossing Status: Found
UCIP Comments: 05/16/2017 LS inlet is almost completely buried. Nothing visible on the WS. Pipe has been selected to be internally cleaned and inspected as part of the DMP project. (A. Freitag - DWR Sutter Yard)11/15/2016 Appears abandoned and should be done so properly. (A. Freitag - DWR Sutter Yard)05/11/2016 Possibly an abandoned crossing. LS inlet was over 50% buried and nothing was found on the WS. (A. Freitag - DWR Sutter Yard)08/04/2015 LS pipe end filled about 50% with soil and WS pipe end is buried. (A. Freitag - DWR Sutter Yard)12/08/2014 Same as last inspection. (A. Freitag - DWR Sutter Yard)06/11/2014 Same as last inspection. (A. Freitag - DWR Sutter Yard)11/19/2013 Same as last inspection. (A. Freitag - DWR Sutter Yard)05/29/2013 Same as last inspection. (A. Freitag - DWR Sutter Yard)10/30/2012 Pipe filled with soil and outlet/appurtenances are buried. (W. Wylie - DWR UCIP)
FIELD_STRUCT_DESC: *ABANDONED* 24-inch corrugated metal drainage pipe through the levee, 8.5 feet below the crown. Flap gate on the waterside (WS). Concrete "U" shaped headwall on the landside (LS) toe. [Additional Reference(s): DWR Levee Log, 1990 (HLM 7.70). USACE Sacramento O&M Manual, Unit 515 - Upper Butte Creek - Part No. 1, April 1955, (Station 576+72). USACE As-Built Drawing No. 50-4-2637, Exhibit B, Sheet 2, April 1950, (Station 576+72.4)].
FS Date: 5/31/2017 1:58:00 PM

LM Start	7.58	Rating **	M	Issue No.	16 (cont)
LM End	7.58	Issue Type +	Ma	Location *	

Photo 1 of 2 : UCIP_SP_2021_58208_67970.jpg



Headwall at LS toe.

Photo 2 of 2 : UCIP_SP_2021_58208_67969.jpg



Headwall at LS toe.

* Location LS : Land Side N/A : Not Applicable WS : Water Side CR : Crown		** Rating A : Acceptable N : Not Inspected/Rated M : Minimally Acceptable C : Corrected U : Unacceptable A/W : Acceptable but Monitor & Maintain		+ Issue Type Ma : Maintenance Deficiency Ob : Design & System Obsolescence En : Enforcement	
--	--	---	--	---	--

**Flood Control Project Maintenance
Levee Inspections**

Levee Inspection Report By Mile - Spring 2021

Sutter Maintenance Yard Maintenance Area 0005

Waterway	Bank	Unit Miles	Inspection Start/End	Inspector
Unit No. 01 Butte Creek	Left	15.08	03/24/2021 03/24/2021	Makar Sokol

LM Start	7.70	Rating **	A/W	Issue No.	72
LM End	7.70	Issue Type +	Ma	Location *	WS
Category	Earthen Levee			GPS Latitude/Longitude	
				Start	End
Item	Erosion / Bank Caving			39.596076 °	39.596076 °
				-121.788123 °	-121.788123 °
DWR ID	MA5-02				
Comment Code					
E1 : Note and monitor erosion site.					
Inspector Comment					
Erosion at the waterside bank.					
Site ID No:225					
Site Designation:MA5-02					

No Photos

*** Location**
LS : Land Side N/A : Not Applicable
WS : Water Side
CR : Crown

**** Rating**
A : Acceptable N : Not Inspected/Rated
M : Minimally Acceptable C : Corrected
U : Unacceptable A/W : Acceptable but Monitor & Maintain

+ Issue Type
Ma : Maintenance Deficiency
Ob : Design & System Obsolescence
En : Enforcement

**Flood Control Project Maintenance
Levee Inspections**

Levee Inspection Report By Mile - Spring 2021

Sutter Maintenance Yard Maintenance Area 0005

Waterway	Bank	Unit Miles	Inspection Start/End	Inspector
Unit No. 01 Butte Creek	Left	15.08	03/24/2021 03/24/2021	Makar Sokol

LM Start	8.21	Rating **	M	Issue No.	17
LM End	8.21	Issue Type +	Ma	Location *	
Category	Supplemental		GPS Latitude/Longitude		
			Start	End	
Item	DWR UCIP LMA Responsibility		39.589751 °	39.589751 °	
			-121.792818 °	-121.792818 °	
DWR ID	1629				

Comment Code

Inspector Comment

FS_ID:58209
DS_ID:1629
EP_NO: N/A
Repair Type: Non-Urgent
Crossing Status: Found
UCIP Comments: 05/16/2017 LS inlet is half blocked off by flash boards and sediment. WS flap gate is blocked closed by sediment. Pipe has been selected to be internally cleaned and inspected as part of the DMP project. (A. Freitag - DWR Sutter Yard)11/15/2016 LS inlet was unburied and entire pipe is about 25% full of soil. WS flapgate was shut and partially buried. (A. Freitag - DWR Sutter Yard)05/11/2016 WS flap gate was about 50% buried and LS was 100% buried. Appears to be an abandoned crossing. (A. Freitag - DWR Sutter Yard)08/04/2015 WS flap gate is partially buried by soil and being overgrown with vegetation. LS pipe end was underwater and suspected to still be completely buried with soil. (A. Freitag - DWR Sutter Yard)12/08/2014 Same as last inspection. (A. Freitag - DWR Sutter Yard)06/11/2014 Same as last inspection. (A. Freitag - DWR Sutter Yard)11/19/2013 Same as last inspection. (A. Freitag - DWR Sutter Yard)05/29/2013 Same as last inspection. (A. Freitag - DWR Sutter Yard)10/30/2012 Pipe filled with soil. (W. Wylie - DWR UCIP) FIELD_STRUCT_DESC: 24-inch corrugated metal drainage pipe through the levee, 9.3 feet below the crown. Flap gate on the waterside (WS). Concrete headwalls at the landside (LS) and the WS toes. [Additional Reference(s): DWR Levee Log, 1990 (HLM 8.35). USACE Sacramento O&M Manual, Unit 515 - Upper Butte Creek - Part No. 1, April 1955, (Station 609+79). USACE As-Built Drawing No. 50-4-2637, Exhibit B, Sheet 3, April 1950, (Station 609+78.5)].
FS Date: 5/31/2017 1:59:00 PM

Photo 1 of 3 : UCIP_SP_2021_58209_67973.jpg



Outlet at WS toe.

* Location LS : Land Side N/A : Not Applicable WS : Water Side CR : Crown	** Rating A : Acceptable M : Minimally Acceptable U : Unacceptable	N : Not Inspected/Rated C : Corrected A/W : Acceptable but Monitor & Maintain	+ Issue Type Ma : Maintenance Deficiency Ob : Design & System Obsolescence En : Enforcement
--	--	---	---

**Flood Control Project Maintenance
Levee Inspections**

Levee Inspection Report By Mile - Spring 2021

Sutter Maintenance Yard Maintenance Area 0005

Waterway	Bank	Unit Miles	Inspection Start/End	Inspector
Unit No. 01 Butte Creek	Left	15.08	03/24/2021 03/24/2021	Makar Sokol

LM Start	8.21	Rating **	M	Issue No.	17 (cont)
LM End	8.21	Issue Type +	Ma	Location *	
Category	Supplemental			GPS Latitude/Longitude	
				Start	End
Item	DWR UCIP LMA Responsibility			39.589751 °	39.589751 °
				-121.792818 °	-121.792818 °
DWR ID	1629				

Photo 2 of 3 : UCIP_SP_2021_58209_67972.jpg



Buried inlet at LS toe.

LM Start	8.21	Rating **	M	Issue No.	17 (cont)
LM End	8.21	Issue Type +	Ma	Location *	

Photo 3 of 3 : UCIP_SP_2021_58209_67971.jpg



Flap gate at WS toe.

* Location LS : Land Side N/A : Not Applicable WS : Water Side CR : Crown	** Rating A : Acceptable M : Minimally Acceptable U : Unacceptable	N : Not Inspected/Rated C : Corrected A/W : Acceptable but Monitor & Maintain	+ Issue Type Ma : Maintenance Deficiency Ob : Design & System Obsolescence En : Enforcement
--	--	---	---

**Flood Control Project Maintenance
Levee Inspections**

Levee Inspection Report By Mile - Spring 2021

Sutter Maintenance Yard Maintenance Area 0005

Waterway	Bank	Unit Miles	Inspection Start/End	Inspector
Unit No. 01 Butte Creek	Left	15.08	03/24/2021 03/24/2021	Makar Sokol

LM Start	9.08	Rating **	M	Issue No.	18
LM End	9.08	Issue Type +	En	Location *	
Category	Supplemental			GPS Latitude/Longitude	
				Start	End
Item	DWR UCIP Field Study			39.579908 °	39.579908 °
				-121.802790 °	-121.802790 °
DWR ID	1631				

Comment Code

Inspector Comment

FS_ID:58210
DS_ID:1631
EP_NO: N/A
Repair Type: Non-Urgent
Crossing Status: Found
UCIP Comments: 05/16/2017 Abandoned and needs to be done so properly. (A. Freitag - DWR Sutter Yard)11/15/2016 Abandoned. (A. Freitag - DWR Sutter Yard)05/11/2016 Abandoned pipe. (A. Freitag - DWR Sutter Yard) 08/04/2015 Abandoned pipe. Casey Wilder has started the steps to have the pipe properly abandoned and removed from the levee. (A. Freitag - DWR Sutter Yard)12/08/2014 Same as last inspection. (A. Freitag - DWR Sutter Yard)06/11/2014 Same as last inspection. (A. Freitag - DWR Sutter Yard)11/19/2013 Same as last inspection. (A. Freitag - DWR Sutter Yard)05/29/2013 Same as last inspection. (A. Freitag - DWR Sutter Yard)10/30/2012 Need to confirm proper abandonment of pipe. Pipe should be plugged on LS. (W. Wylie - DWR UCIP)
FIELD_STRUCT_DESC: 16-inch steel irrigation pipe through the levee, 11.5 feet below the crown. Pump located on the waterside (WS).
Distribution box at the landside (LS) toe. [Additional Reference(s): DWR Levee Log, 1990 (HLM 9.21). USACE Sacramento O&M Manual, Unit 515 - Upper Butte Creek - Part No. 1, April 1955, (Station 655+68). USACE As-Built Drawing No. 50-4-2637, Exhibit B, Sheet 3, April 1950, (Station 655+68.2)].
FS Date: 5/31/2017 2:09:00 PM

LM Start	9.08	Rating **	M	Issue No.	18 (cont)
LM End	9.08	Issue Type +	En	Location *	

Photo 1 of 3 : UCIP_SP_2021_58210_67976.jpg



Concrete distribution box at LS toe.

Photo 2 of 3 : UCIP_SP_2021_58210_67975.jpg



WS shoulder.

* Location LS : Land Side N/A : Not Applicable WS : Water Side CR : Crown	** Rating A : Acceptable M : Minimally Acceptable U : Unacceptable	N : Not Inspected/Rated C : Corrected A/W : Acceptable but Monitor & Maintain	+ Issue Type Ma : Maintenance Deficiency Ob : Design & System Obsolescence En : Enforcement
--	--	--	---

**Flood Control Project Maintenance
Levee Inspections**

Levee Inspection Report By Mile - Spring 2021

Sutter Maintenance Yard Maintenance Area 0005

Waterway	Bank	Unit Miles	Inspection Start/End	Inspector
Unit No. 01 Butte Creek	Left	15.08	03/24/2021 03/24/2021	Makar Sokol

LM Start	9.08	Rating **	M	Issue No.	18 (cont)
LM End	9.08	Issue Type +	En	Location *	
Category	Supplemental		GPS Latitude/Longitude		
			Start	End	
Item	DWR UCIP Field Study		39.579908 °	39.579908 °	
			-121.802790 °	-121.802790 °	
DWR ID	1631				

Photo 3 of 3 : UCIP_SP_2021_58210_67974.jpg



Pipe at bottom of concrete distribution box.

LM Start	9.52	Rating **	A/W	Issue No.	19
LM End	9.52	Issue Type +	Ma	Location *	
Category	Supplemental		GPS Latitude/Longitude		
			Start	End	
Item	DWR UCIP LMA Responsibility		39.575072 °	39.575072 °	
			-121.807805 °	-121.807805 °	
DWR ID	1775				

Comment Code

Inspector Comment

FS_ID:58213
DS_ID:1775
EP_NO: N/A
Repair Type: No Action Needed
Crossing Status: Found
UCIP Comments: 05/16/2017 Crossing appears to be in good condition. (A. Freitag - DWR Sutter Yard)11/15/2016 Crossing appears to be in good condition. (A. Freitag - DWR Sutter Yard)05/11/2016 Crossing appears to be in good condition. (A. Freitag - DWR Sutter Yard)08/04/2015 Crossing is in good condition. No noticeable issues to report. (A. Freitag - DWR Sutter Yard)12/08/2014 Same as last inspection. (A. Freitag - DWR Sutter Yard)06/11/2014 Same as last inspection. (A. Freitag - DWR Sutter Yard)11/19/2013 Same as last inspection. (A. Freitag - DWR Sutter Yard)05/29/2013 Flap gates were removed by DWR Sutter Maintenance Yard to allow water to flow freely through crossing and not back up in ditch. (A. Freitag - DWR Sutter Yard)10/30/2012 Seems there should be flap gates on this structure. (W. Wylie - DWR UCIP) FIELD_STRUCT_DESC: [Robert's Creek Outlet Structure] 1 of 4: 66-inch corrugated metal drainage pipe through the levee, 17.9 feet below the crown. Concrete headwalls on the landside (LS) and the waterside (WS). Flap gate located on the WS. [Additional Reference(s): DWR Levee Log, 1990 (HLM 9.66). USACE Sacramento O&M Manual, Unit 515 - Upper Butte Creek - Part No. 1, April 1955, (Station 678+00). USACE As-Built Drawing No. 50-4-2637, Exhibit B, Sheet 3, April 1950]. FS Date: 5/31/2017 2:10:00 PM

Photo 1 of 2 : UCIP_SP_2021_58213_67979.jpg



WS of pipe crossing

* Location LS : Land Side N/A : Not Applicable WS : Water Side CR : Crown	** Rating A : Acceptable M : Minimally Acceptable U : Unacceptable N : Not Inspected/Rated C : Corrected A/W : Acceptable but Monitor & Maintain	+ Issue Type Ma : Maintenance Deficiency Ob : Design & System Obsolescence En : Enforcement
--	---	---

Levee Inspection Report By Mile - Spring 2021

Waterway	Bank	Unit Miles	Inspection Start/End	Inspector
Unit No. 01 Butte Creek	Left	15.08	03/24/2021 03/24/2021	Makar Sokol

Photo 2 of 2 : UCIP_SP_2021_58213_67978.jpg



LS of pipe crossing.

Photo 1 of 2 : UCIP_SP_2021_51977_67981.jpg



WS of crossing.

Inspector Comment

FIELD_STRUCT_DESC: [Robert's Creek Outlet Structure] 2 of 4: 66-inch corrugated metal drainage pipe through the levee, 17.9 feet below the crown. Concrete headwalls on the landside (LS) and the waterside (WS). Flap gate located on the WS. [Additional Reference(s): DWR Levee Log, 1990 (HLM 9.66). USACE Sacramento O&M Manual, Unit 515 - Upper Butte Creek - Part No. 1, April 1955, (Station 678+00). USACE As-Built Drawing No. 50-4-2637, Exhibit B, Sheet 3, April 1950].
FS Date: 5/31/2017 2:12:05 PM

* Location	** Rating	+ Issue Type
LS : Land Side N/A : Not Applicable	A : Acceptable N : Not Inspected/Rated	Ma : Maintenance Deficiency
WS : Water Side	M : Minimally Acceptable C : Corrected	Ob : Design & System Obsolescence
CR : Crown	U : Unacceptable A/W : Acceptable but Monitor & Maintain	En : Enforcement

**Flood Control Project Maintenance
Levee Inspections**

Levee Inspection Report By Mile - Spring 2021

Sutter Maintenance Yard Maintenance Area 0005

Waterway	Bank	Unit Miles	Inspection Start/End	Inspector
Unit No. 01 Butte Creek	Left	15.08	03/24/2021 03/24/2021	Makar Sokol

LM Start	9.52	Rating **	A/W	Issue No.	20 (cont)
LM End	9.52	Issue Type +	Ma	Location *	
Category	Supplemental		GPS Latitude/Longitude		
			Start	End	
Item	DWR UCIP LMA Responsibility		39.575036 °	39.575036 °	
			-121.807807 °	-121.807807 °	
DWR ID	1774				

Photo 2 of 2 : UCIP_SP_2021_51977_67980.jpg



LS of crossing.

LM Start	9.52	Rating **	A/W	Issue No.	21
LM End	9.52	Issue Type +	Ma	Location *	
Category	Supplemental		GPS Latitude/Longitude		
			Start	End	
Item	DWR UCIP LMA Responsibility		39.575000 °	39.575000 °	
			-121.807808 °	-121.807808 °	
DWR ID	1632				

Comment Code

Inspector Comment

FS_ID:51978
 DS_ID:1632
 EP_NO: N/A
 Repair Type: No Action Needed
 Crossing Status: Found
 UCIP Comments: 5/16/2017 Crossing appears to be in good condition.
 (DWR Sutter Yard- AFreitag)11/15/2016 Crossing appears to be in good condition. (DWR Sutter Yard- AFreitag)5/11/2016 Crossing appears to be in good condition.8/4/2015 Crossing appears in good condition. No noticeable issues to report.12/8/2014 Same as last inspection.6/11/2014 Same as last inspection.11/19/2013 Same as last inspection.5/29/2013 Flap gates were removed by DWR Sutter Maintenance Yard to allow water to flow freely through crossing and not back up in ditch.10/30/2012 Seems there should be flap gates on this structure.
 FIELD_STRUCT_DESC: [Robert's Creek Outlet Structure] 3 of 4: 66-inch corrugated metal drainage pipe through the levee, 17.9 feet below the crown. Concrete headwalls on the landside (LS) and the waterside (WS). Flap gate located on the WS. [Additional Reference(s): DWR Levee Log, 1990 (HLM 9.66). USACE Sacramento O&M Manual, Unit 515 - Upper Butte Creek - Part No. 1, April 1955, (Station 678+00). USACE As-Built Drawing No. 50-4-2637, Exhibit B, Sheet 3, April 1950].
 FS Date: 5/31/2017 2:13:48 PM

Photo 1 of 2 : UCIP_SP_2021_51978_67982.jpg



WS of crossing.

*** Location**

LS : Land Side N/A : Not Applicable
 WS : Water Side
 CR : Crown

**** Rating**

A : Acceptable N : Not Inspected/Rated
 M : Minimally Acceptable C : Corrected
 U : Unacceptable A/W : Acceptable but Monitor & Maintain

+ Issue Type

Ma : Maintenance Deficiency
 Ob : Design & System Obsolescence
 En : Enforcement

**Flood Control Project Maintenance
Levee Inspections**

Levee Inspection Report By Mile - Spring 2021

Sutter Maintenance Yard Maintenance Area 0005

Waterway	Bank	Unit Miles	Inspection Start/End	Inspector
Unit No. 01 Butte Creek	Left	15.08	03/24/2021 03/24/2021	Makar Sokol

LM Start	9.52	Rating **	A/W	Issue No.	21 (cont)
LM End	9.52	Issue Type +	Ma	Location *	
Category	Supplemental		GPS Latitude/Longitude		
			Start	End	
Item	DWR UCIP LMA Responsibility		39.575000 °	39.575000 °	
			-121.807808 °	-121.807808 °	
DWR ID	1632				

Photo 2 of 2 : UCIP_SP_2021_51978_67983.jpg



LS of crossing.

LM Start	9.52	Rating **	A/W	Issue No.	22
LM End	9.52	Issue Type +	Ma	Location *	
Category	Supplemental		GPS Latitude/Longitude		
			Start	End	
Item	DWR UCIP LMA Responsibility		39.574964 °	39.574964 °	
			-121.807810 °	-121.807810 °	
DWR ID	1773				

Comment Code

Inspector Comment

FS_ID:51979
DS_ID:1773
EP_NO: N/A
Repair Type: No Action Needed
Crossing Status: Found
UCIP Comments: 5/16/2017 Crossing appears to be in good condition.
(DWR Sutter Yard- AFreitag)11/15/2016 Crossing appears to be in good condition. (DWR Sutter Yard- AFreitag)5/11/2016 Crossing appears to be in good condition.8/4/2015 Crossing appears in good condition. No noticeable issues to report.12/8/2014 Same as last inspection.6/11/2014 Same as last inspection.11/19/2013 Same as last inspection.5/29/2013 Flap gates were removed by DWR Sutter Maintenance Yard to allow water to flow freely through crossing and not back up in ditch.10/30/2012 Seems there should be flap gates on this structure.
FIELD_STRUCT_DESC: [Robert's Creek Outlet Structure] 4 of 4: 66-inch corrugated metal drainage pipe through the levee, 17.9 feet below the crown. Concrete headwalls on the landside (LS) and the waterside (WS). Flap gate located on the WS. [Additional Reference(s): DWR Levee Log, 1990 (HLM 9.66). USACE Sacramento O&M Manual, Unit 515 - Upper Butte Creek - Part No. 1, April 1955, (Station 678+00). USACE As-Built Drawing No. 50-4-2637, Exhibit B, Sheet 3, April 1950].
FS Date: 5/31/2017 2:14:38 PM

Photo 1 of 2 : UCIP_SP_2021_51979_67985.jpg



WS of crossing.

*** Location**

LS : Land Side N/A : Not Applicable
WS : Water Side
CR : Crown

**** Rating**

A : Acceptable N : Not Inspected/Rated
M : Minimally Acceptable C : Corrected
U : Unacceptable A/W : Acceptable but Monitor & Maintain

+ Issue Type

Ma : Maintenance Deficiency
Ob : Design & System Obsolescence
En : Enforcement

**Flood Control Project Maintenance
Levee Inspections**

Levee Inspection Report By Mile - Spring 2021

Sutter Maintenance Yard Maintenance Area 0005

Waterway	Bank	Unit Miles	Inspection Start/End	Inspector
Unit No. 01 Butte Creek	Left	15.08	03/24/2021 03/24/2021	Makar Sokol

LM Start	9.52	Rating **	A/W	Issue No.	22 (cont)
LM End	9.52	Issue Type +	Ma	Location *	
Category	Supplemental			GPS Latitude/Longitude	
				Start	End
Item	DWR UCIP LMA Responsibility			39.574964 °	39.574964 °
				-121.807810 °	-121.807810 °
DWR ID	1773				

Photo 2 of 2 : UCIP_SP_2021_51979_67984.jpg



LS of crossing.

LM Start	9.54	Rating **	M	Issue No.	5
LM End	10.33	Issue Type +	En	Location *	LS
Category	Earthen Levee			GPS Latitude/Longitude	
				Start	End
Item	Encroachments			39.574837 °	39.567892 °
				-121.807913 °	-121.819283 °
DWR ID	DWR_MA0005_01_s_2012_5				
Comment Code					
DT : Ditch					
Inspector Comment					

Photo 1 of 1 : SP_2021_MA0005_196_5_20210224_00002.jpg



View of the agricultural ditch along the landside toe.

*** Location**
LS : Land Side N/A : Not Applicable
WS : Water Side
CR : Crown

**** Rating**
A : Acceptable N : Not Inspected/Rated
M : Minimally Acceptable C : Corrected
U : Unacceptable A/W : Acceptable but Monitor & Maintain

+ Issue Type
Ma : Maintenance Deficiency
Ob : Design & System Obsolescence
En : Enforcement

**Flood Control Project Maintenance
Levee Inspections**

Levee Inspection Report By Mile - Spring 2021

Sutter Maintenance Yard Maintenance Area 0005

Waterway	Bank	Unit Miles	Inspection Start/End	Inspector
Unit No. 01 Butte Creek	Left	15.08	03/24/2021 03/24/2021	Makar Sokol

LM Start	10.04	Rating **	M	Issue No.	23	
LM End	10.04	Issue Type +	En	Location *		
Category	Supplemental			GPS Latitude/Longitude		
				Start	End	
Item	DWR UCIP Field Study			39.570596 °	39.570596 °	
				-121.815215 °	-121.815215 °	
DWR ID	1633					
Comment Code						
Inspector Comment						
FS_ID:51980 DS_ID:1633 EP_NO: N/A Repair Type: Non-Urgent Crossing Status: Found UCIP Comments: 5/16/2017 Abandoned crossing and needs to be done so properly. Pipe has been selected to be internally cleaned and inspected as part of the DMP project. (DWR Sutter Yard-AFreitag)11/15/2016 Abandoned. (DWR Sutter Yard-AFreitag)5/11/2016 Abandoned crossing.8/4/2015 Abandoned pipe. Casey Wilder has started the steps to have the pipe properly abandoned and removed from the levee.12/8/2014 Same as last inspection.6/11/2014 Same as last inspection.11/19/2013 Same as last inspection.5/29/2013 Same as last inspection.10/30/2012 Pipe and headwall buried on WS, no access to slide gate. FIELD_STRUCT_DESC: 24-inch corrugated metal irrigation pipe through the levee, 12.5 feet below the crown. Slide gate on the waterside (WS). Flap gate and headwall on the landside (LS). Concrete headwall at the WS toe. [Additional Reference(s): DWR Levee Log, 1990 (HLM 10.19). USACE Sacramento O&M Manual, Unit 515 - Upper Butte Creek - Part No. 1, April 1955, (Station 706+00). USACE As-Built Drawing No. 50-4-2637, Exhibit B, Sheet 3, April 1950]. FS Date: 5/31/2017 2:15:33 PM						

Photo 1 of 1 : UCIP_SP_2021_51980_67986.jpg



Flap gate and headwall at LS toe in irrigation or drainage ditch.

* Location LS : Land Side N/A : Not Applicable WS : Water Side CR : Crown	** Rating A : Acceptable M : Minimally Acceptable U : Unacceptable	N : Not Inspected/Rated C : Corrected A/W : Acceptable but Monitor & Maintain	+ Issue Type Ma : Maintenance Deficiency Ob : Design & System Obsolescence En : Enforcement
--	--	---	---

**Flood Control Project Maintenance
Levee Inspections**

Levee Inspection Report By Mile - Spring 2021

Sutter Maintenance Yard Maintenance Area 0005

Waterway	Bank	Unit Miles	Inspection Start/End	Inspector
Unit No. 01 Butte Creek	Left	15.08	03/24/2021 03/24/2021	Makar Sokol

LM Start	10.26	Rating **	M	Issue No.	24
LM End	10.26	Issue Type +	En	Location *	
Category	Supplemental			GPS Latitude/Longitude	
				Start	End
Item	DWR UCIP Field Study			39.568523 °	39.568523 °
				-121.818232 °	-121.818232 °
DWR ID	1634				
Comment Code					
Inspector Comment					
FS_ID:51981 DS_ID:1634 EP_NO: N/A Repair Type: Non-Urgent Crossing Status: Found UCIP Comments: 5/16/2017 Abandoned- needs to be done so properly. Pipe has been selected to be internally cleaned and inspected as part of the DMP project. (DWR Sutter Yard- AFreitag)11/15/2016 Abandoned. (DWR Sutter Yard- AFreitag)5/11/2016 Abandoned crossing.8/4/2015 Abandoned pipe. Casey Wilder has started the steps to have the pipe properly abandoned and removed from the levee.12/8/2014 Same as last inspection.6/11/2014 Same as last inspection.11/19/2013 Same as last inspection.5/29/2013 Same as last inspection. FIELD_STRUCT_DESC: 24-inch corrugated metal irrigation pipe through the levee, 14.5 feet below the crown. Slide gate on the waterside (WS) on concrete headwall. Flap gate on the landside (LS). [Additional Reference(s): DWR Levee Log, 1990 (HLM 10.41). USACE Sacramento O&M Manual, Unit 515 - Upper Butte Creek - Part No. 1, April 1955, (Station 717+50). USACE As-Built Drawing No. 50-4-2637, Exhibit B, Sheet 3, April 1950]. FS Date: 5/31/2017 2:16:48 PM					

LM Start	10.26	Rating **	M	Issue No.	24 (cont)
LM End	10.26	Issue Type +	En	Location *	

Photo 1 of 3 : UCIP_SP_2021_51981_67989.jpg



Pipe and flap gate on LS toe.

Photo 2 of 3 : UCIP_SP_2021_51981_67988.jpg



headwall at WS toe.

* Location LS : Land Side N/A : Not Applicable WS : Water Side CR : Crown	** Rating A : Acceptable M : Minimally Acceptable U : Unacceptable	N : Not Inspected/Rated C : Corrected A/W : Acceptable but Monitor & Maintain	+ Issue Type Ma : Maintenance Deficiency Ob : Design & System Obsolescence En : Enforcement
--	--	---	---

**Flood Control Project Maintenance
Levee Inspections**

Levee Inspection Report By Mile - Spring 2021

Sutter Maintenance Yard Maintenance Area 0005

Waterway	Bank	Unit Miles	Inspection Start/End	Inspector
Unit No. 01 Butte Creek	Left	15.08	03/24/2021 03/24/2021	Makar Sokol

LM Start	10.26	Rating **	M	Issue No.	24 (cont)
LM End	10.26	Issue Type +	En	Location *	
Category	Supplemental		GPS Latitude/Longitude		
			Start	End	
Item	DWR UCIP Field Study		39.568523 °	39.568523 °	
			-121.818232 °	-121.818232 °	
DWR ID	1634				

Photo 3 of 3 : UCIP_SP_2021_51981_67987.jpg



Headwall and slide gate on WS toe.

LM Start	10.37	Rating **	M	Issue No.	26
LM End	10.37	Issue Type +	En	Location *	LS
Category	Earthen Levee			GPS Latitude/Longitude	
				Start	End
Item	Encroachments			39.567541 °	39.567541 °
				-121.819786 °	-121.819786 °
DWR ID	DWR_MA0005_01_s_2016_26				
Comment Code					
EQ : Equipment					
Inspector Comment					
Abandoned motorhomes and farm equipment should be removed from the landside toe.					

Photo 1 of 1 : SP_2021_MA0005_196_26_20210224_00006.jpg



5/5/2016: Remove abandoned motorhome and equipment from LS toe.

*** Location**
LS : Land Side N/A : Not Applicable
WS : Water Side
CR : Crown

**** Rating**
A : Acceptable N : Not Inspected/Rated
M : Minimally Acceptable C : Corrected
U : Unacceptable A/W : Acceptable but Monitor & Maintain

+ Issue Type
Ma : Maintenance Deficiency
Ob : Design & System Obsolescence
En : Enforcement

**Flood Control Project Maintenance
Levee Inspections**

Levee Inspection Report By Mile - Spring 2021

Sutter Maintenance Yard Maintenance Area 0005

Waterway	Bank	Unit Miles	Inspection Start/End	Inspector
Unit No. 01 Butte Creek	Left	15.08	03/24/2021 03/24/2021	Makar Sokol

LM Start	10.84	Rating **	M	Issue No.	25
LM End	10.84	Issue Type +	Ma	Location *	
Category	Supplemental			GPS Latitude/Longitude	
				Start	End
Item	DWR UCIP LMA Responsibility			39.562559 °	39.562559 °
				-121.825808 °	-121.825808 °
DWR ID	1635				

Comment Code

Inspector Comment

FS_ID:51982
DS_ID:1635
EP_NO: N/A
Repair Type: Non-Urgent
Crossing Status: Found
UCIP Comments: 5/16/2017 Abandoned- needs to be done so properly. (DWR Sutter Yard- A Freitag) 11/15/2016 Abandoned. (DWR Sutter Yard- A Freitag) 5/11/2016 Abandoned crossing. 8/4/2015 Abandoned pipe. Casey Wilder has started the steps to have the pipe properly abandoned and removed from the levee. 12/8/2014 Same as last inspection. 6/11/2014 Same as last inspection. 11/19/2013 Same as last inspection. 5/29/2013 Same as last inspection. 10/30/2012 Pipe buried on both sides of levee.
FIELD_STRUCT_DESC: *ABANDONED* 30-inch corrugated metal drainage pipe through the levee, 12.2 feet below the crown. Flap gate on the waterside (WS) end. [Additional Reference(s): DWR Levee Log, 1990 (HLM 10.99). USACE Sacramento O&M Manual, Unit 515 - Upper Butte Creek - Part No. 1, April 1955, (Station 748+53). USACE As-Built Drawing No. 50-4-2637, Exhibit B, Sheet 4, April 1950].
FS Date: 5/31/2017 2:18:08 PM

LM Start	10.84	Rating **	M	Issue No.	25 (cont)
LM End	10.84	Issue Type +	Ma	Location *	

Photo 1 of 2 : UCIP_SP_2021_51982_67991.jpg



Concrete headwall at LS toe.

Photo 2 of 2 : UCIP_SP_2021_51982_67990.jpg



Concrete headwall at LS toe.

* Location LS : Land Side N/A : Not Applicable WS : Water Side CR : Crown	** Rating A : Acceptable M : Minimally Acceptable U : Unacceptable	N : Not Inspected/Rated C : Corrected A/W : Acceptable but Monitor & Maintain	+ Issue Type Ma : Maintenance Deficiency Ob : Design & System Obsolescence En : Enforcement
--	--	--	---

**Flood Control Project Maintenance
Levee Inspections**

Levee Inspection Report By Mile - Spring 2021

Sutter Maintenance Yard Maintenance Area 0005

Waterway	Bank	Unit Miles	Inspection Start/End	Inspector
Unit No. 01 Butte Creek	Left	15.08	03/24/2021 03/24/2021	Makar Sokol

LM Start	10.87	Rating **	M	Issue No.	67
LM End	10.87	Issue Type +	Ma	Location *	WS
Category	Earthen Levee			GPS Latitude/Longitude	
				Start	End
Item	Erosion / Bank Caving			39.562177 °	39.562177 °
				-121.826072 °	-121.826072 °
DWR ID	DWR_MA0005_01_s _ 2017_67				
Comment Code					
E2 : Schedule repair of erosion site prior to the next inspection.					
Inspector Comment					
Repair the erosion along the waterside slope.					

Photo 1 of 1 : SP_2021_MA0005_196_67_20210224_00023.jpg



View of erosion along the waterside slope.

* Location LS : Land Side N/A : Not Applicable WS : Water Side CR : Crown	** Rating A : Acceptable M : Minimally Acceptable U : Unacceptable	N : Not Inspected/Rated C : Corrected A/W : Acceptable but Monitor & Maintain	+ Issue Type Ma : Maintenance Deficiency Ob : Design & System Obsolescence En : Enforcement
--	--	---	---

**Flood Control Project Maintenance
Levee Inspections**

Levee Inspection Report By Mile - Spring 2021

Sutter Maintenance Yard Maintenance Area 0005

Waterway	Bank	Unit Miles	Inspection Start/End	Inspector
Unit No. 01 Butte Creek	Left	15.08	03/24/2021 03/24/2021	Makar Sokol

LM Start	10.94	Rating **	M	Issue No.	28
LM End	10.94	Issue Type +	En	Location *	
Category	Supplemental			GPS Latitude/Longitude	
				Start	End
Item	DWR UCIP Field Study			39.561483 °	39.561483 °
				-121.826939 °	-121.826939 °
DWR ID	1781				

Comment Code

Inspector Comment

FS_ID:58217
DS_ID:1781
EP_NO: 16667
Repair Type: Non-Urgent
Crossing Status: Found
UCIP Comments: 05/16/2017 LS appears to be in good condition. WS outlet is too heavily vegetated to be inspected. Vegetation needs to be cleared back. Pipe has been selected to be internally cleaned and inspected as part of the DMP project. (A. Freitag - DWR Sutter Yard)11/15/2016 Crossing appears to be in good condition. (A. Freitag - DWR Sutter Yard)05/11/2016 Crossing appears to be in good condition. (A. Freitag - DWR Sutter Yard)08/04/2015 Crossing appears in good condition. No noticeable issues to report. (A. Freitag - DWR Sutter Yard)06/11/2014 Same as last inspection. (A. Freitag - DWR Sutter Yard)11/19/2013 Same as last inspection. (A. Freitag - DWR Sutter Yard)05/29/2013 Same as last inspection. (A. Freitag - DWR Sutter Yard)
FIELD_STRUCT_DESC: [Western Canal Siphon] 5 of 5: 18-inch reinforced concrete irrigation pipe through the levee, at an unknown depth. Pipe terminates at a concrete outlet on the waterside (WS) slope. Concrete headwalls on both the landside (LS) and the WS. Slide gate and air vent on the LS. This is a turnout that was installed for the use of the property owner. (three 10-foot pipes under the channel and levees of Butte Creek, two 18-inch pipes under the east levee and two 42-inch pipes under the west levee of Butte Creek work authorized under Permit No. 16667, 1997 - Western Canal Water District).
FS Date: 5/31/2017 2:23:00 PM

LM Start	10.94	Rating **	M	Issue No.	28 (cont)
LM End	10.94	Issue Type +	En	Location *	

Photo 1 of 3 : UCIP_SP_2021_58217_68002.jpg



Concrete U shaped headwall at inlet in canal on LS.

Photo 2 of 3 : UCIP_SP_2021_58217_68001.jpg



Concrete U shaped outlet on WS slope.

* Location LS : Land Side N/A : Not Applicable WS : Water Side CR : Crown		** Rating A : Acceptable M : Minimally Acceptable U : Unacceptable N : Not Inspected/Rated C : Corrected A/W : Acceptable but Monitor & Maintain		+ Issue Type Ma : Maintenance Deficiency Ob : Design & System Obsolescence En : Enforcement	
--	--	---	--	---	--

**Flood Control Project Maintenance
Levee Inspections**

Levee Inspection Report By Mile - Spring 2021

Sutter Maintenance Yard Maintenance Area 0005

Waterway	Bank	Unit Miles	Inspection Start/End	Inspector
Unit No. 01 Butte Creek	Left	15.08	03/24/2021 03/24/2021	Makar Sokol

LM Start	10.94	Rating **	M	Issue No.	28 (cont)
LM End	10.94	Issue Type +	En	Location *	
Category	Supplemental		GPS Latitude/Longitude		
			Start	End	
Item	DWR UCIP Field Study		39.561483 °	39.561483 °	
			-121.826939 °	-121.826939 °	
DWR ID	1781				

Photo 3 of 3 : UCIP_SP_2021_58217_68000.jpg



Air vents, slide gates, and concrete headwall at south side of canal on LS.

LM Start	11.36	Rating **	A/W	Issue No.	29
LM End	11.36	Issue Type +	Ma	Location *	
Category	Supplemental		GPS Latitude/Longitude		
			Start	End	
Item	DWR UCIP LMA Responsibility		39.556741 °	39.556741 °	
			-121.832071 °	-121.832071 °	
DWR ID	1636				

Comment Code

Inspector Comment

FS_ID:58218
DS_ID:1636
EP_NO: N/A
Repair Type: No Action Needed
Crossing Status: Found
UCIP Comments: 05/16/2017 Crossing appears to be in good condition. Pipe has been selected to be internally cleaned and inspected as part of the DMP project. (A. Freitag - DWR Sutter Yard)11/15/2016 Crossing appears to be in good condition. (A. Freitag - DWR Sutter Yard)05/11/2016 Crossing appears to be in good condition. (A. Freitag - DWR Sutter Yard)08/04/2015 Crossing appears in good condition. No noticeable issues to report. (A. Freitag - DWR Sutter Yard)06/11/2014 Same as last inspection. (A. Freitag - DWR Sutter Yard)11/19/2013 Same as last inspection. (A. Freitag - DWR Sutter Yard)05/29/2013 Same as last inspection. (A. Freitag - DWR Sutter Yard)
FIELD_STRUCT_DESC: 1 of 4: 54-inch corrugated metal drainage pipe through the levee, 13.5 feet below the crown. Flap gate on the waterside (WS). Concrete headwalls on the landside (LS) and the WS toes. [Additional Reference(s): DWR Levee Log, 1990 (HLM 11.52). USACE Sacramento O&M Manual, Unit 515 - Upper Butte Creek - Part No. 1, April 1955, (Station 25+18 "A"). USACE As-Built Drawing No. 50-4-2637, Exhibit B, Sheet 4, April 1950].
FS Date: 5/31/2017 2:25:00 PM

Photo 1 of 2 : UCIP_SP_2021_58218_68007.jpg



WS headwall and flap gates at WS toe.

* Location LS : Land Side N/A : Not Applicable WS : Water Side CR : Crown	** Rating A : Acceptable M : Minimally Acceptable U : Unacceptable N : Not Inspected/Rated C : Corrected A/W : Acceptable but Monitor & Maintain	+ Issue Type Ma : Maintenance Deficiency Ob : Design & System Obsolescence En : Enforcement
--	---	---

**Flood Control Project Maintenance
Levee Inspections**

Levee Inspection Report By Mile - Spring 2021

Sutter Maintenance Yard Maintenance Area 0005

Waterway	Bank	Unit Miles	Inspection Start/End	Inspector
Unit No. 01 Butte Creek	Left	15.08	03/24/2021 03/24/2021	Makar Sokol

LM Start	11.36	Rating **	A/W	Issue No.	29 (cont)
LM End	11.36	Issue Type +	Ma	Location *	
Category	Supplemental		GPS Latitude/Longitude		
			Start	End	
Item	DWR UCIP LMA Responsibility		39.556741 °	39.556741 °	
			-121.832071 °	-121.832071 °	
DWR ID	1636				

Photo 2 of 2 : UCIP_SP_2021_58218_68006.jpg



LS intake headwall.

LM Start	11.36	Rating **	A/W	Issue No.	31
LM End	11.36	Issue Type +	Ma	Location *	
Category	Supplemental		GPS Latitude/Longitude		
			Start	End	
Item	DWR UCIP LMA Responsibility		39.556716 °	39.556716 °	
			-121.832097 °	-121.832097 °	
DWR ID	1782				

Comment Code

Inspector Comment

FS_ID:58219
DS_ID:1782
EP_NO: N/A
Repair Type: No Action Needed
Crossing Status: Found
UCIP Comments: 05/16/2017 Crossing appears to be in good condition. Pipe has been selected to be internally cleaned and inspected as part of the DMP project. (A. Freitag - DWR Sutter Yard)11/15/2016 Crossing appears to be in good condition. (A. Freitag - DWR Sutter Yard)05/11/2016 Crossing appears to be in good condition. (A. Freitag - DWR Sutter Yard)08/04/2015 Crossing appears in good condition. No noticeable issues to report. (A. Freitag - DWR Sutter Yard)06/11/2014 Same as last inspection. (A. Freitag - DWR Sutter Yard)11/19/2013 Same as last inspection. (A. Freitag - DWR Sutter Yard)05/29/2013 Same as last inspection. (A. Freitag - DWR Sutter Yard)
FIELD_STRUCT_DESC: 2 of 4: 54-inch corrugated metal drainage pipe through the levee, 13.5 feet below the crown. Flap gate on the waterside (WS). Concrete headwalls on the landside (LS) and the WS toes. [Additional Reference(s): DWR Levee Log, 1990 (HLM 11.52). USACE Sacramento O&M Manual, Unit 515 - Upper Butte Creek - Part No. 1, April 1955, (Station 25+18 "A"). USACE As-Built Drawing No. 50-4-2637, Exhibit B, Sheet 4, April 1950].
FS Date: 5/31/2017 2:31:00 PM

Photo 1 of 2 : UCIP_SP_2021_58219_68009.jpg



Headwall and flap gates at WS toe.

* Location LS : Land Side N/A : Not Applicable WS : Water Side CR : Crown	** Rating A : Acceptable M : Minimally Acceptable U : Unacceptable N : Not Inspected/Rated C : Corrected A/W : Acceptable but Monitor & Maintain	+ Issue Type Ma : Maintenance Deficiency Ob : Design & System Obsolescence En : Enforcement
--	---	---

**Flood Control Project Maintenance
Levee Inspections**

Levee Inspection Report By Mile - Spring 2021

Sutter Maintenance Yard Maintenance Area 0005

Waterway	Bank	Unit Miles	Inspection Start/End	Inspector
Unit No. 01 Butte Creek	Left	15.08	03/24/2021 03/24/2021	Makar Sokol

LM Start	11.36	Rating **	A/W	Issue No.	31 (cont)
LM End	11.36	Issue Type +	Ma	Location *	
Category	Supplemental		GPS Latitude/Longitude		
			Start	End	
Item	DWR UCIP LMA Responsibility		39.556716 °	39.556716 °	
			-121.832097 °	-121.832097 °	
DWR ID	1782				

Photo 2 of 2 : UCIP_SP_2021_58219_68008.jpg



Headwall at LS toe.

LM Start	11.37	Rating **	A/W	Issue No.	33
LM End	11.37	Issue Type +	Ma	Location *	
Category	Supplemental		GPS Latitude/Longitude		
			Start	End	
Item	DWR UCIP LMA Responsibility		39.556693 °	39.556693 °	
			-121.832119 °	-121.832119 °	
DWR ID	1783				

Photo 1 of 2 : UCIP_SP_2021_58220_68011.jpg



Headwall and flap gates at WS toe.

Comment Code					
Inspector Comment					
FS_ID:58220 DS_ID:1783 EP_NO: N/A Repair Type: No Action Needed Crossing Status: Found UCIP Comments: 05/16/2017 Crossing appears to be in good condition. Pipe has been selected to be internally cleaned and inspected as part of the DMP project. (A. Freitag - DWR Sutter Yard)11/15/2016 Crossing appears to be in good condition. (A. Freitag - DWR Sutter Yard)05/11/2016 Crossing appears to be in good condition. (A. Freitag - DWR Sutter Yard)08/04/2015 Crossing appears in good condition. No noticeable issues to report. (A. Freitag - DWR Sutter Yard)06/11/2014 Same as last inspection. (A. Freitag - DWR Sutter Yard)11/19/2013 Same as last inspection. (A. Freitag - DWR Sutter Yard)05/29/2013 Same as last inspection. (A. Freitag - DWR Sutter Yard) FIELD_STRUCT_DESC: 3 of 4: 54-inch corrugated metal drainage pipe through the levee, 13.5 feet below the crown. Flap gate on the waterside (WS). Concrete headwalls on the landside (LS) and the WS toes. [Additional Reference(s): DWR Levee Log, 1990 (HLM 11.52). USACE Sacramento O&M Manual, Unit 515 - Upper Butte Creek - Part No. 1, April 1955, (Station 25+18 "A"). USACE As-Built Drawing No. 50-4-2637, Exhibit B, Sheet 4, April 1950]. FS Date: 5/31/2017 2:32:00 PM					

* Location	** Rating	+ Issue Type
LS : Land Side WS : Water Side CR : Crown	A : Acceptable M : Minimally Acceptable U : Unacceptable	Ma : Maintenance Deficiency Ob : Design & System Obsolescence En : Enforcement
N/A : Not Applicable	N : Not Inspected/Rated C : Corrected A/W : Acceptable but Monitor & Maintain	

**Flood Control Project Maintenance
Levee Inspections**

Levee Inspection Report By Mile - Spring 2021

Sutter Maintenance Yard Maintenance Area 0005

Waterway	Bank	Unit Miles	Inspection Start/End	Inspector
Unit No. 01 Butte Creek	Left	15.08	03/24/2021 03/24/2021	Makar Sokol

LM Start	11.37	Rating **	A/W	Issue No.	33 (cont)
LM End	11.37	Issue Type +	Ma	Location *	
Category	Supplemental		GPS Latitude/Longitude		
			Start	End	
Item	DWR UCIP LMA Responsibility		39.556693 °	39.556693 °	
			-121.832119 °	-121.832119 °	
DWR ID	1783				

Photo 2 of 2 : UCIP_SP_2021_58220_68010.jpg



Headwall on LS toe.

LM Start	11.37	Rating **	A/W	Issue No.	34
LM End	11.37	Issue Type +	Ma	Location *	
Category	Supplemental		GPS Latitude/Longitude		
			Start	End	
Item	DWR UCIP LMA Responsibility		39.556681 °	39.556681 °	
			-121.832130 °	-121.832130 °	
DWR ID	1784				

Comment Code

Inspector Comment

FS_ID:58221
DS_ID:1784
EP_NO: N/A
Repair Type: No Action Needed
Crossing Status: Found
UCIP Comments: 05/16/2017 Crossing appears to be in good condition. Pipe has been selected to be internally cleaned and inspected as part of the DMP project. (A. Freitag - DWR Sutter Yard)11/15/2016 Crossing appears to be in good condition. (A. Freitag - DWR Sutter Yard)05/11/2016 Crossing appears to be in good condition. (A. Freitag - DWR Sutter Yard)08/04/2015 Crossing appears in good condition. No noticeable issues to report. (A. Freitag - DWR Sutter Yard)06/11/2014 Same as last inspection. (A. Freitag - DWR Sutter Yard)11/19/2013 Same as last inspection. (A. Freitag - DWR Sutter Yard)05/29/2013 Same as last inspection. (A. Freitag - DWR Sutter Yard)
FIELD_STRUCT_DESC: 4 of 4: 54-inch corrugated metal drainage pipe through the levee, 13.5 feet below the crown. Flap gate on the waterside (WS). Concrete headwalls on the landside (LS) and the WS toes. [Additional Reference(s): DWR Levee Log, 1990 (HLM 11.52). USACE Sacramento O&M Manual, Unit 515 - Upper Butte Creek - Part No. 1, April 1955, (Station 25+18 "A"). USACE As-Built Drawing No. 50-4-2637, Exhibit B, Sheet 4, April 1950].
FS Date: 5/31/2017 2:32:00 PM

Photo 1 of 2 : UCIP_SP_2021_58221_68013.jpg



Headwall and flap gates at WS toe.

* Location LS : Land Side N/A : Not Applicable WS : Water Side CR : Crown	** Rating A : Acceptable M : Minimally Acceptable U : Unacceptable	N : Not Inspected/Rated C : Corrected A/W : Acceptable but Monitor & Maintain	+ Issue Type Ma : Maintenance Deficiency Ob : Design & System Obsolescence En : Enforcement
--	--	---	---

**Flood Control Project Maintenance
Levee Inspections**

Levee Inspection Report By Mile - Spring 2021

Sutter Maintenance Yard Maintenance Area 0005

Waterway	Bank	Unit Miles	Inspection Start/End	Inspector
Unit No. 01 Butte Creek	Left	15.08	03/24/2021 03/24/2021	Makar Sokol

LM Start	11.37	Rating **	A/W	Issue No.	34 (cont)	
LM End	11.37	Issue Type +	Ma	Location *		
Category	Supplemental			GPS Latitude/Longitude		
				Start		End
Item	DWR UCIP LMA Responsibility			39.556681 °	39.556681 °	
				-121.832130 °	-121.832130 °	
DWR ID	1784					

Photo 2 of 2 : UCIP_SP_2021_58221_68012.jpg



Headwall on LS toe.

LM Start	11.38	Rating **	M	Issue No.	64
LM End	11.38	Issue Type +	En	Location *	LS
Category	Earthen Levee			GPS Latitude/Longitude	
				Start	End
Item	Encroachments			39.556540 °	39.556540 °
				-121.832302 °	-121.832302 °
DWR ID	DWR_MA0005_01_s_2019_64				
Comment Code					
DE : Debris					
Inspector Comment					
Remove concrete and steel pipes from the landside slope and toe.					

No Photos

LM Start	11.63	Rating **	M	Issue No.	57
LM End	11.66	Issue Type +	Ma	Location *	WS
Category	Earthen Levee			GPS Latitude/Longitude	
				Start	End
Item	Vegetation			39.553771 °	39.553348 °
				-121.835196 °	-121.835653 °
DWR ID	DWR_MA0005_01_s_2021_57				
Comment Code					
V1 : Control annual grass and weeds on the levee slopes and easements.					
Inspector Comment					

Photo 1 of 1 : SP_2021_MA0005_196_57_20210407_00082.jpg



View of the vegetation along the waterside slope. Spring 2021.

* Location
LS : Land Side N/A : Not Applicable
WS : Water Side
CR : Crown

** Rating
A : Acceptable N : Not Inspected/Rated
M : Minimally Acceptable C : Corrected
U : Unacceptable A/W : Acceptable but Monitor & Maintain

+ Issue Type
Ma : Maintenance Deficiency
Ob : Design & System Obsolescence
En : Enforcement

**Flood Control Project Maintenance
Levee Inspections**

Levee Inspection Report By Mile - Spring 2021

Sutter Maintenance Yard Maintenance Area 0005

Waterway	Bank	Unit Miles	Inspection Start/End	Inspector
Unit No. 01 Butte Creek	Left	15.08	03/24/2021 03/24/2021	Makar Sokol

LM Start	11.85	Rating **	M	Issue No.	6
LM End	13.64	Issue Type +	En	Location *	LS
Category	Earthen Levee			GPS Latitude/Longitude	
				Start	End
Item	Encroachments			39.551235 °	39.531462 °
				-121.837697 °	-121.856165 °
DWR ID	DWR_MA0005_01_s_2012_6				
Comment Code					
DT : Ditch					
Inspector Comment					

Photo 1 of 1 : SP_2021_MA0005_196_6_20210224_00003.jpg



View of the agricultural ditch along the landside toe.

LM Start	11.85	Rating **	M	Issue No.	35	
LM End	11.85	Issue Type +	En	Location *		
Category	Supplemental			GPS Latitude/Longitude		
				Start	End	
Item	DWR UCIP Field Study			39.551212 °	39.551212 °	
				-121.837724 °	-121.837724 °	
DWR ID	1747					
Comment Code						
Inspector Comment						
FS_ID:58224 DS_ID:1747 EP_NO: N/A Repair Type: Non-Urgent Crossing Status: Indicator Found UCIP Comments: 05/16/2017 Pipe is buried on both sides of the levee. Unable to locate. (A. Freitag - DWR Sutter Yard)11/15/2016 Buried on both sides of Levee. (A. Freitag - DWR Sutter Yard)05/11/2016 Buried pipe. (A. Freitag - DWR Sutter Yard)08/04/2015 Pipe is buried on both ends. (A. Freitag - DWR Sutter Yard)06/11/2014 Same as last inspection. (A. Freitag - DWR Sutter Yard)11/19/2013 Same as last inspection. (A. Freitag - DWR Sutter Yard)05/29/2013 Same as last inspection. (A. Freitag - DWR Sutter Yard)10/31/2012 Pipe burried on both LS and WS. (W. Wylie - DWR UCIP) FIELD_STRUCT_DESC: 48-inch corrugated metal irrigation pipe through the levee, at an unknown depth, indicator found. 48-inch corrugated metal riser and a sparling water meter/irrigation structure on the landside (LS). 4-foot by 6-foot concrete distribution box at the LS toe. [Additional Reference(s): USACE Sacramento O&M Manual, Unit 515 - Upper Butte Creek - Part No. 1, April 1955, (Station 836+86). USACE As-Built Drawing No. 50-4-2637, Exhibit B, Sheet 4, April 1950, (Station 836+85.70)]. FS Date: 5/31/2017 2:34:00 PM						

Photo 1 of 1 : UCIP_SP_2021_58224_68025.jpg



Buried pipe at concrete box, LS toe.

* Location LS : Land Side N/A : Not Applicable WS : Water Side CR : Crown	** Rating A : Acceptable M : Minimally Acceptable U : Unacceptable	N : Not Inspected/Rated C : Corrected A/W : Acceptable but Monitor & Maintain	+ Issue Type Ma : Maintenance Deficiency Ob : Design & System Obsolescence En : Enforcement
--	--	---	---

**Flood Control Project Maintenance
Levee Inspections**

Levee Inspection Report By Mile - Spring 2021

Sutter Maintenance Yard Maintenance Area 0005

Waterway	Bank	Unit Miles	Inspection Start/End	Inspector
Unit No. 01 Butte Creek	Left	15.08	03/24/2021 03/24/2021	Makar Sokol

LM Start	13.50	Rating **	M	Issue No.	39
LM End	13.54	Issue Type +	Ma	Location *	LS
Category	Earthen Levee			GPS Latitude/Longitude	
				Start	End
Item	Vegetation			39.533075 °	39.532719 °
				-121.854831 °	-121.855240 °
DWR ID	DWR_MA0005_01_s _ 2021_39				
Comment Code					
V1 : Control annual grass and weeds on the levee slopes and easements.					
Inspector Comment					

No Photos

LM Start	13.69	Rating **	M	Issue No.	69
LM End	13.69	Issue Type +	Ma	Location *	WS
Category	Earthen Levee			GPS Latitude/Longitude	
				Start	End
Item	Erosion / Bank Caving			39.531032 °	39.531032 °
				-121.856977 °	-121.856977 °
DWR ID	DWR_MA0005_01_s _ 2017_69				
Comment Code					
E2 : Schedule repair of erosion site prior to the next inspection.					
Inspector Comment					

Photo 1 of 1 : SP_2021_MA0005_196_69_20210224_00024.jpg



Repair the erosion along the landside slope and toe.

* Location LS : Land Side N/A : Not Applicable WS : Water Side CR : Crown	** Rating A : Acceptable M : Minimally Acceptable U : Unacceptable	N : Not Inspected/Rated C : Corrected A/W : Acceptable but Monitor & Maintain	+ Issue Type Ma : Maintenance Deficiency Ob : Design & System Obsolescence En : Enforcement
--	--	---	---

**Flood Control Project Maintenance
Levee Inspections**

Levee Inspection Report By Mile - Spring 2021

Sutter Maintenance Yard Maintenance Area 0005

Waterway	Bank	Unit Miles	Inspection Start/End	Inspector
Unit No. 01 Butte Creek	Left	15.08	03/24/2021 03/24/2021	Makar Sokol

LM Start	14.46	Rating **	M	Issue No.	36	
LM End	14.46	Issue Type +	Ma	Location *		
Category	Supplemental			GPS Latitude/Longitude		
				Start	End	
Item	DWR UCIP LMA Responsibility			39.522200 °	39.522200 °	
				-121.865592 °	-121.865592 °	
DWR ID	1639					
Comment Code						
Inspector Comment						
FS_ID:58227 DS_ID:1639 EP_NO: N/A Repair Type: Non-Urgent Crossing Status: Found UCIP Comments: 05/16/2017 Soil still eroded away from the WS wing walls. Pipe has been selected to be internally cleaned and inspected as part of the DMP project. (A. Freitag - DWR Sutter Yard)11/15/2016 No soil supporting the WS wing walls. (A. Freitag - DWR Sutter Yard)05/11/2016 Still no soil supporting the WS wing walls and apron. WS vegetation was thinner and not a problem this time. (A. Freitag - DWR Sutter Yard)08/04/2015 No soil supporting the WS wing walls at the WS pipe end. WS pipe end is also being overgrown with vegetation and should be cleared back. (A. Freitag - DWR Sutter Yard)06/11/2014 Same as last inspection. (A. Freitag - DWR Sutter Yard)11/19/2013 Same as last inspection. (A. Freitag - DWR Sutter Yard)05/29/2013 Same as last inspection. (A. Freitag - DWR Sutter Yard)10/31/2012 Soil under Concrete wing walls on WS toe has been eroded. No soil supporting wing walls. (W. Wylie - DWR UCIP) FIELD_STRUCT_DESC: 36-inch corrugated metal drainage pipe through the levee, 13 feet below the crown. Flap gate on the waterside (WS). Concrete headwalls on the landside (LS) and the WS ends. [Additional Reference(s): DWR Levee Log, 1990 (HLM 14.66). USACE Sacramento O&M Manual 515, April 1955, (Station 978+25). USACE As-Built Drawing No. 50-4-2637, Exhibit B, Sheet 5, April 1950, (Station 978+24.95)]. FS Date: 5/31/2017 2:39:00 PM						

Photo 1 of 3 : UCIP_SP_2021_58227_68033.jpg



Headwall at inlet on LS toe.

* Location LS : Land Side N/A : Not Applicable WS : Water Side CR : Crown	** Rating A : Acceptable M : Minimally Acceptable U : Unacceptable N : Not Inspected/Rated C : Corrected A/W : Acceptable but Monitor & Maintain	+ Issue Type Ma : Maintenance Deficiency Ob : Design & System Obsolescence En : Enforcement
--	---	---

**Flood Control Project Maintenance
Levee Inspections**

Levee Inspection Report By Mile - Spring 2021

Sutter Maintenance Yard Maintenance Area 0005

Waterway	Bank	Unit Miles	Inspection Start/End	Inspector
Unit No. 01 Butte Creek	Left	15.08	03/24/2021 03/24/2021	Makar Sokol

LM Start	14.46	Rating **	M	Issue No.	36 (cont)
LM End	14.46	Issue Type +	Ma	Location *	
Category	Supplemental			GPS Latitude/Longitude	
				Start	End
Item	DWR UCIP LMA Responsibility			39.522200 °	39.522200 °
				-121.865592 °	-121.865592 °
DWR ID	1639				

Photo 2 of 3 : UCIP_SP_2021_58227_68032.jpg



CMP pipe, flap gate, and headwall on WS toe.

LM Start	14.46	Rating **	M	Issue No.	36 (cont)
LM End	14.46	Issue Type +	Ma	Location *	

Photo 3 of 3 : UCIP_SP_2021_58227_68031.jpg



Wingwalls of headwall not supported by soil.

*** Location**
LS : Land Side N/A : Not Applicable
WS : Water Side
CR : Crown

**** Rating**
A : Acceptable N : Not Inspected/Rated
M : Minimally Acceptable C : Corrected
U : Unacceptable A/W : Acceptable but Monitor & Maintain

+ Issue Type
Ma : Maintenance Deficiency
Ob : Design & System Obsolescence
En : Enforcement

**Flood Control Project Maintenance
Levee Inspections
Unit Cover Sheet**

Sutter Maintenance Yard Maintenance Area 0005

Waterway			Bank	Unit Miles
Unit No. 02 Butte Creek			Right	16.27
	Spring (March - May)	Summer (June - August)	(September - November) Fall	Winter (December - February)
Unit Maintenance Rating (Fall Only)				
Date of Inspection	3/24/2021 - 3/24/2021			
DWR Inspector	Makar Sokol			
Accompanied By	Bob Duffey Sutter Maintenance Yard			

Summer & Winter Inspections

The Local Maintaining Agency (LMA) is responsible for summer and winter inspections. The LMA is required to submit a report regarding summer and winter inspections to the California Department of Water Resources (DWR).

DWR must be informed on the:

- a) completion of the inspection
- b) any changes other than the results of normal maintenance
- c) corrections to deficiencies noted in this report

If additional items are noted, further documentation of those items must also be submitted.

The LMA should submit this information to DWR using the LMA web application tool available at:

<http://cdec.water.ca.gov/lma.html>

If the LMA is unable to submit information on this webpage, please contact DWR for assistance.

The LMA should submit the information and any associated documentation by September 30 for summer inspections and March 31 for winter inspections.

**Flood Control Project Maintenance
Levee Inspections**

Levee Inspection Report By Mile - Spring 2021

Sutter Maintenance Yard Maintenance Area 0005

Waterway	Bank	Unit Miles	Inspection Start/End	Inspector
Unit No. 02 Butte Creek	Right	16.27	03/24/2021 03/24/2021	Makar Sokol

LM Start	0.83	Rating **	M	Issue No.	43
LM End	1.47	Issue Type +	Ma	Location *	WS
Category	Earthen Levee			GPS Latitude/Longitude	
				Start	End
Item	Vegetation			39.525220 °	39.532849 °
				-121.865181 °	-121.858746 °
DWR ID	DWR_MA0005_02_s_2021_43				
Comment Code					
V1 : Control annual grass and weeds on the levee slopes and easements.					
Inspector Comment					

No Photos

LM Start	1.21	Rating **	M	Issue No.	1
LM End	1.59	Issue Type +	En	Location *	LS
Category	Earthen Levee			GPS Latitude/Longitude	
				Start	End
Item	Encroachments			39.529933 °	39.534102 °
				-121.861563 °	-121.856947 °
DWR ID	DWR_MA0005_02_s_2012_1				
Comment Code					
DT : Ditch					
Inspector Comment					

Photo 1 of 1 : SP_2021_MA0005_197_1_20210224_00001.jpg



View of the agricultural ditch along the landside toe.

LM Start	1.86	Rating **	M	Issue No.	48
LM End	1.86	Issue Type +	En	Location *	LS
Category	Earthen Levee			GPS Latitude/Longitude	
				Start	End
Item	Encroachments			39.536915 °	39.536915 °
				-121.853669 °	-121.853669 °
DWR ID	DWR_MA0005_02_f_2016_48				
Comment Code					
EQ : Equipment					
Inspector Comment					
Remove pile of soil and rocks and ag equipment from the landside toe of the levee.					

No Photos

* Location LS : Land Side N/A : Not Applicable WS : Water Side CR : Crown	** Rating A : Acceptable M : Minimally Acceptable U : Unacceptable	N : Not Inspected/Rated C : Corrected A/W : Acceptable but Monitor & Maintain	+ Issue Type Ma : Maintenance Deficiency Ob : Design & System Obsolescence En : Enforcement
--	--	---	---

**Flood Control Project Maintenance
Levee Inspections**

Levee Inspection Report By Mile - Spring 2021

Sutter Maintenance Yard Maintenance Area 0005

Waterway	Bank	Unit Miles	Inspection Start/End	Inspector
Unit No. 02 Butte Creek	Right	16.27	03/24/2021 03/24/2021	Makar Sokol

LM Start	1.90	Rating **	M	Issue No.	49
LM End	1.90	Issue Type +	Ma	Location *	LS
Category	Earthen Levee			GPS Latitude/Longitude	
				Start	End
Item	Erosion / Bank Caving			39.537445 °	39.537445 °
				-121.853112 °	-121.853112 °
DWR ID	DWR_MA0005_02_f _ 2016_49				
Comment Code					
E2 : Schedule repair of erosion site prior to the next inspection.					
Inspector Comment					

Photo 1 of 1 : SP_2021_MA0005_197_49_20210407_00081.jpg



View of the erosion at the landside toe. Spring 2021.

* Location LS : Land Side N/A : Not Applicable WS : Water Side CR : Crown	** Rating A : Acceptable M : Minimally Acceptable U : Unacceptable	N : Not Inspected/Rated C : Corrected A/W : Acceptable but Monitor & Maintain	+ Issue Type Ma : Maintenance Deficiency Ob : Design & System Obsolescence En : Enforcement
--	--	---	---

**Flood Control Project Maintenance
Levee Inspections**

Levee Inspection Report By Mile - Spring 2021

Sutter Maintenance Yard Maintenance Area 0005

Waterway	Bank	Unit Miles	Inspection Start/End	Inspector
Unit No. 02 Butte Creek	Right	16.27	03/24/2021 03/24/2021	Makar Sokol

LM Start	1.91	Rating **	U	Issue No.	2
LM End	1.91	Issue Type +	Ma	Location *	
Category	Supplemental		GPS Latitude/Longitude		
			Start	End	
Item	DWR UCIP LMA Responsibility		39.537455 °	39.537455 °	
			-121.853061 °	-121.853061 °	
DWR ID	1645				

Comment Code

Inspector Comment

FS_ID:58240
DS_ID:1645
EP_NO: N/A
Repair Type: Urgent
Crossing Status: Found
UCIP Comments: 10/05/2018 Unable to see pipe on waterside due to high water level in the creek. Erosion is present around headwall on LS. Screw gate on LS blocked with silt approximately halfway in height. (O. Yakimov - DWR UCIP) 05/18/2017 LS erosion still present. Ws flap gate has been completely buried by sediment after the high water flows through the area. Pipe has been selected to be internally cleaned and inspected as part of the DMP project. (A. Freitag - DWR Sutter Yard)11/14/2016 LS erosion still present and is into the prism of the levee. WS flap gate was still mostly buried and non-operational. (A. Freitag - DWR Sutter Yard)05/23/2016 The tree that was overgrowing the WS flapgate has been removed. Flap gate was half buried and unable to open. Erosion on the LS is still present. (A. Freitag - DWR Sutter Yard)07/28/2015 LS inlet is underwater but there appears to be erosion behind the LS headwall. WS pipe end and flap gate are completely overgrown and inaccessible for inspection. (A. Freitag - DWR Sutter Yard)11/25/2014 Tree is overgrowing the WS pipe outlet.. Needs to be trimmed back. (A. Freitag - DWR Sutter Yard)06/04/2014 Same as last inspection. (A. Freitag - DWR Sutter Yard)11/12/2013 Same as last inspection. (A. Freitag - DWR Sutter Yard)06/06/2013 Same as last inspection. (A. Freitag - DWR Sutter Yard)10/31/2012 Vegetation needs to be cleared from outlet. (W. Wylie - DWR UCIP)
FIELD_STRUCT_DESC: 36-inch corrugated metal drainage pipe through the levee, 17 feet below the crown. Flap gate on the waterside (WS). Slide gate on the landside (LS) toe. Concrete headwalls at both the LS and the WS toes. [Additional Reference(s): DWR Levee Log, 1990 (HLM 1.92). USACE Sacramento O&M Manual, Unit 515 - Upper Butte Creek - Part No. 1, (Station 902+50). USACE As-Built Drawing No. 50-4-2637, Exhibit B, Sheet 5, April 1950].
FS Date: 10/5/2018 11:20:00 AM

Photo 1 of 3 : UCIP_SP_2021_58240_68497.jpg



Flap gate on WS slope.

* Location LS : Land Side N/A : Not Applicable WS : Water Side CR : Crown	** Rating A : Acceptable M : Minimally Acceptable U : Unacceptable	N : Not Inspected/Rated C : Corrected A/W : Acceptable but Monitor & Maintain	+ Issue Type Ma : Maintenance Deficiency Ob : Design & System Obsolescence En : Enforcement
--	--	--	---

**Flood Control Project Maintenance
Levee Inspections**

Levee Inspection Report By Mile - Spring 2021

Sutter Maintenance Yard Maintenance Area 0005

Waterway	Bank	Unit Miles	Inspection Start/End	Inspector
Unit No. 02 Butte Creek	Right	16.27	03/24/2021 03/24/2021	Makar Sokol

LM Start	1.91	Rating **	U	Issue No.	2 (cont)
LM End	1.91	Issue Type +	Ma	Location *	
Category	Supplemental		GPS Latitude/Longitude		
			Start	End	
Item	DWR UCIP LMA Responsibility		39.537455 °	39.537455 °	
			-121.853061 °	-121.853061 °	
DWR ID	1645				

Photo 2 of 3 : UCIP_SP_2021_58240_68496.jpg



Flap gate on WS slope.

LM Start	1.91	Rating **	U	Issue No.	2 (cont)
LM End	1.91	Issue Type +	Ma	Location *	

Photo 3 of 3 : UCIP_SP_2021_58240_74600.jpg



WS flap gate overgrown with vegetation.

LM Start	1.94	Rating **	M	Issue No.	42
LM End	2.08	Issue Type +	Ma	Location *	WS
Category	Earthen Levee			GPS Latitude/Longitude	
				Start	End
Item	Vegetation			39.537805 °	39.539488 °
				-121.852708 °	-121.851014 °
DWR ID	DWR_MA0005_02_s_2021_42				
Comment Code					
V1 : Control annual grass and weeds on the levee slopes and easements.					
Inspector Comment					

No Photos

* Location LS : Land Side N/A : Not Applicable WS : Water Side CR : Crown		** Rating A : Acceptable N : Not Inspected/Rated M : Minimally Acceptable C : Corrected U : Unacceptable A/W : Acceptable but Monitor & Maintain		+ Issue Type Ma : Maintenance Deficiency Ob : Design & System Obsolescence En : Enforcement
--	--	---	--	---

**Flood Control Project Maintenance
Levee Inspections**

Levee Inspection Report By Mile - Spring 2021

Sutter Maintenance Yard Maintenance Area 0005

Waterway	Bank	Unit Miles	Inspection Start/End	Inspector
Unit No. 02 Butte Creek	Right	16.27	03/24/2021 03/24/2021	Makar Sokol

LM Start	2.87	Rating **	M	Issue No.	3
LM End	2.87	Issue Type +	En	Location *	
Category	Supplemental			GPS Latitude/Longitude	
				Start	End
Item	DWR UCIP Field Study			39.549014 °	39.549014 °
				-121.842866 °	-121.842866 °
DWR ID	1646				

Comment Code

Inspector Comment

FS_ID:58241
DS_ID:1646
EP_NO: 3927
Repair Type: Non-Urgent
Crossing Status: Found
UCIP Comments: 05/18/2017 Appears to have been abandoned. Pump is missing from the pier and there is no sign of the riser and siphon breaker on the LS shoulder. (A. Freitag - DWR Sutter Yard)11/14/2016 Appears abandoned- pump removed from pier in Butte Creek also riser and siphon breaker are no longer seen on LS shoulder. (A. Freitag - DWR Sutter Yard)05/23/2016 Crossing appears to have been abandoned and removed. Could not locate the LS riser and siphon breaker. (A. Freitag - DWR Sutter Yard)07/28/2015 No pump present during any of my inspections. Crossing appears abandoned. CMP riser has been knocked out of levee. (A. Freitag - DWR Sutter Yard) 11/25/2014 Same as last inspection. (A. Freitag - DWR Sutter Yard)06/04/2014 Same as last inspection. (A. Freitag - DWR Sutter Yard)11/12/2013 Same as last inspection. (A. Freitag - DWR Sutter Yard)06/06/2013 Same as last inspection. (A. Freitag - DWR Sutter Yard)10/31/2012 Pump does not appear to be in use or is abandoned. (A. Freitag - DWR Sutter Yard)
FIELD_STRUCT_DESC: 20-inch (not 18-inch as referenced in the levee log) exterior coated steel irrigation pipe through the levee, 2.4 feet below the crown. Siphon breaker in a 24-inch corrugated metal riser on the landside (LS) shoulder. Portable pump on the waterside (WS). (18-inch originally authorized however, approval was given for 20-inch pipe (page 6 of 26) under Permit No. 3927, 1962 - Arrowhead Ranch).
[Additional Reference(s): DWR Levee Log, 1990].
FS Date: 6/1/2017 9:46:00 AM

Photo 1 of 3 : UCIP_SP_2021_58241_68057.jpg



Air vent in 24-inch CMP riser on LS shoulder.

* Location LS : Land Side N/A : Not Applicable WS : Water Side CR : Crown	** Rating A : Acceptable N : Not Inspected/Rated M : Minimally Acceptable C : Corrected U : Unacceptable A/W : Acceptable but Monitor & Maintain	+ Issue Type Ma : Maintenance Deficiency Ob : Design & System Obsolescence En : Enforcement
--	---	---

**Flood Control Project Maintenance
Levee Inspections**

Levee Inspection Report By Mile - Spring 2021

Sutter Maintenance Yard Maintenance Area 0005

Waterway	Bank	Unit Miles	Inspection Start/End	Inspector
Unit No. 02 Butte Creek	Right	16.27	03/24/2021 03/24/2021	Makar Sokol

LM Start	2.87	Rating **	M	Issue No.	3 (cont)
LM End	2.87	Issue Type +	En	Location *	
Category	Supplemental		GPS Latitude/Longitude		
			Start	End	
Item	DWR UCIP Field Study		39.549014 °	39.549014 °	
			-121.842866 °	-121.842866 °	
DWR ID	1646				

Photo 2 of 3 : UCIP_SP_2021_58241_68056.jpg



Pump on metal pier at WS toe.

LM Start	2.87	Rating **	M	Issue No.	3 (cont)
LM End	2.87	Issue Type +	En	Location *	

Photo 3 of 3 : UCIP_SP_2021_58241_74602.jpg



Spot where CMP riser was on the LS shoulder.

LM Start	3.10	Rating **	M	Issue No.	7
LM End	4.04	Issue Type +	En	Location *	LS
Category	Earthen Levee			GPS Latitude/Longitude	
				Start	End
Item	Encroachments			39.551780 °	39.562341 °
				-121.840507 °	-121.829507 °
DWR ID	DWR_MA0005_02_s_2012_7				
Comment Code					
DT : Ditch					
Inspector Comment					

Photo 1 of 1 : SP_2021_MA0005_197_7_20210224_00003.jpg



View of the agricultural ditch along the landside toe.

*** Location**

LS : Land Side N/A : Not Applicable
WS : Water Side
CR : Crown

**** Rating**

A : Acceptable N : Not Inspected/Rated
M : Minimally Acceptable C : Corrected
U : Unacceptable A/W : Acceptable but Monitor & Maintain

+ Issue Type

Ma : Maintenance Deficiency
Ob : Design & System Obsolescence
En : Enforcement

**Flood Control Project Maintenance
Levee Inspections**

Levee Inspection Report By Mile - Spring 2021

Sutter Maintenance Yard Maintenance Area 0005

Waterway	Bank	Unit Miles	Inspection Start/End	Inspector
Unit No. 02 Butte Creek	Right	16.27	03/24/2021 03/24/2021	Makar Sokol

LM Start	3.38	Rating **	U	Issue No.	55
LM End	3.38	Issue Type +	Ma	Location *	LS
Category	Earthen Levee			GPS Latitude/Longitude	
				Start	End
Item	Slope Stability			39.555027 °	39.555027 °
				-121.837555 °	-121.837555 °
DWR ID	DWR_MA0005_02_f _ 2019_55				
Comment Code					
S1 : Repair slope instability.					
Inspector Comment					

Photo 1 of 1 : SP_2021_MA0005_197_55_20210224_00014.jpg



View of sloughing on the landside slope. Fall 2019.

LM Start	4.03	Rating **	A/W	Issue No.	4	
LM End	4.03	Issue Type +	Ma	Location *		
Category	Supplemental			GPS Latitude/Longitude		
				Start	End	
Item	DWR UCIP LMA Responsibility			39.562271 °	39.562271 °	
				-121.829610 °	-121.829610 °	
DWR ID	1647					
Comment Code						
Inspector Comment						
FS_ID:58242 DS_ID:1647 EP_NO: N/A Repair Type: No Action Needed Crossing Status: Found UCIP Comments: 05/18/2017 Crossing appears to be in good condition. Tree near the LS screw gate could use some trimming. Pipe has been selected to be internally cleaned and inspected as part of the DMP project. (A. Freitag - DWR Sutter Yard)11/14/2016 Crossing appears to be in good condition. (A. Freitag - DWR Sutter Yard)05/23/2016 Crossing appears to be in good condition. (A. Freitag - DWR Sutter Yard)07/28/2015 Pipe appears in good condition. No noticeable issues to report. (A. Freitag - DWR Sutter Yard)06/06/2013 Same as last inspection. (A. Freitag - DWR Sutter Yard)11/12/2013 Same as last inspection. (A. Freitag - DWR Sutter Yard)06/04/2014 Same as last inspection. (A. Freitag - DWR Sutter Yard)11/25/2014 Same as last inspection. (A. Freitag - DWR Sutter Yard) FIELD_STRUCT_DESC: 30-inch corrugated metal drainage pipe through the levee, 14.3 feet below the crown. Slide gate on the landside (LS). Flap gate on the waterside (WS). Concrete headwall at the LS toe. Concrete splash apron on the WS. [Additional Reference(s): DWR Levee Log, 1990 (HLM 4.08). USACE Sacramento O&M Manual, Unit 515 - Upper Butte Creek - Part No. 1, April 1955, (Station 5+20 "A"). USACE As-Built Drawing No. 50-4-2637, Exhibit B, Sheet 4, April 1950]. FS Date: 6/1/2017 9:47:00 AM						

Photo 1 of 3 : UCIP_SP_2021_58242_68064.jpg



Concrete headwall and slide gate at LS toe.

* Location LS : Land Side N/A : Not Applicable WS : Water Side CR : Crown	** Rating A : Acceptable M : Minimally Acceptable U : Unacceptable	N : Not Inspected/Rated C : Corrected A/W : Acceptable but Monitor & Maintain	+ Issue Type Ma : Maintenance Deficiency Ob : Design & System Obsolescence En : Enforcement
--	--	---	---

**Flood Control Project Maintenance
Levee Inspections**

Levee Inspection Report By Mile - Spring 2021

Sutter Maintenance Yard Maintenance Area 0005

Waterway	Bank	Unit Miles	Inspection Start/End	Inspector
Unit No. 02 Butte Creek	Right	16.27	03/24/2021 03/24/2021	Makar Sokol

LM Start	4.03	Rating **	A/W	Issue No.	4 (cont)	
LM End	4.03	Issue Type +	Ma	Location *		
Category	Supplemental			GPS Latitude/Longitude		
				Start		End
Item	DWR UCIP LMA Responsibility			39.562271 °	39.562271 °	
				-121.829610 °	-121.829610 °	
DWR ID	1647					

Photo 2 of 3 : UCIP_SP_2021_58242_68063.jpg



Concrete headwall and slide gate at LS toe.

LM Start	4.03	Rating **	A/W	Issue No.	4 (cont)
LM End	4.03	Issue Type +	Ma	Location *	

Photo 3 of 3 : UCIP_SP_2021_58242_68062.jpg



Flap gate at outlet on WS berm.

* Location LS : Land Side N/A : Not Applicable WS : Water Side CR : Crown	** Rating A : Acceptable M : Minimally Acceptable U : Unacceptable	N : Not Inspected/Rated C : Corrected A/W : Acceptable but Monitor & Maintain	+ Issue Type Ma : Maintenance Deficiency Ob : Design & System Obsolescence En : Enforcement
--	--	---	---

**Flood Control Project Maintenance
Levee Inspections**

Levee Inspection Report By Mile - Spring 2021

Sutter Maintenance Yard Maintenance Area 0005

Waterway	Bank	Unit Miles	Inspection Start/End	Inspector
Unit No. 02 Butte Creek	Right	16.27	03/24/2021 03/24/2021	Makar Sokol

LM Start	5.35	Rating **	M	Issue No.	8
LM End	5.35	Issue Type +	Ma	Location *	
Category	Supplemental			GPS Latitude/Longitude	
				Start	End
Item	DWR UCIP LMA Responsibility			39.576008 °	39.576008 °
				-121.812599 °	-121.812599 °
DWR ID	1650				

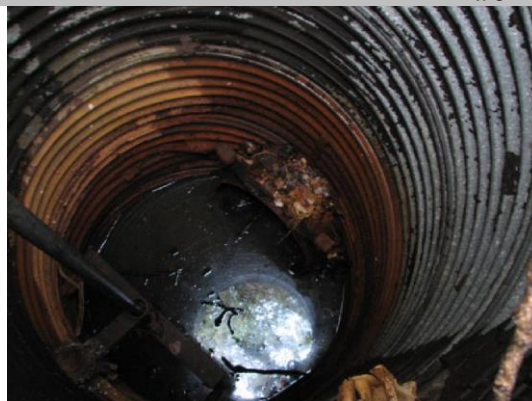
Comment Code

Inspector Comment

FS_ID:58258
DS_ID:1650
EP_NO: N/A
Repair Type: Non-Urgent
Crossing Status: Found
UCIP Comments: 05/23/2019 (O. Magana - DWR UCIP)05/18/2017 Abandoned- only WS riser found. (A. Freitag - DWR Sutter Yard)11/14/2016 Abandoned. (A. Freitag - DWR Sutter Yard)05/23/2016 Abandoned. (A. Freitag - DWR Sutter Yard)07/28/2015 Abandoned- still cannot locate a LS ans WS pipe end. (A. Freitag - DWR Sutter Yard)11/25/2014 Same as last inspection. (A. Freitag - DWR Sutter Yard)06/04/2014 Same as last inspection. (A. Freitag - DWR Sutter Yard)11/12/2013 Same as last inspection. (A. Freitag - DWR Sutter Yard)06/06/2013 Same as last inspection. (A. Freitag - DWR Sutter Yard)10/31/2012 Appears abandoned. Unable to locate outfall on WS. Unable to locate inlet on LS. (W. Wylie - DWR UCIP)
FIELD_STRUCT_DESC: *ABANDONED* 24-inch corrugated metal drainage pipe through the levee, 12.5 feet below the crown. Slide gate and flap gate in a 56-inch corrugated metal riser on the waterside (WS) berm. Flap gate on the WS. [Additional Reference(s): DWR Levee Log, 1990 (HLM 5.41). USACE Sacramento O&M Manual, Unit 515 - Upper Butte Creek - Part No. 1, April 1955, (Station 688+40). USACE As-Built Drawing No. 50-4-2637, Exhibit B, Sheet 3, April 1950].
FS Date: 5/23/2019 5:12:00 PM

LM Start	5.35	Rating **	M	Issue No.	8 (cont)
LM End	5.35	Issue Type +	Ma	Location *	

Photo 1 of 2 : UCIP_SP_2021_58258_68105.jpg



Slide gate and flap gate inside CMP riser on WS berm.

Photo 2 of 2 : UCIP_SP_2021_58258_68104.jpg



56-inch CMP riser on WS berm.

* Location LS : Land Side N/A : Not Applicable WS : Water Side CR : Crown		** Rating A : Acceptable M : Minimally Acceptable U : Unacceptable		+ Issue Type Ma : Maintenance Deficiency Ob : Design & System Obsolescence En : Enforcement	
		N : Not Inspected/Rated C : Corrected A/W : Acceptable but Monitor & Maintain			

**Flood Control Project Maintenance
Levee Inspections**

Levee Inspection Report By Mile - Spring 2021

Sutter Maintenance Yard Maintenance Area 0005

Waterway	Bank	Unit Miles	Inspection Start/End	Inspector
Unit No. 02 Butte Creek	Right	16.27	03/24/2021 03/24/2021	Makar Sokol

LM Start	5.91	Rating **	M	Issue No.	34
LM End	5.91	Issue Type +	En	Location *	LS
Category	Earthen Levee			GPS Latitude/Longitude	
				Start	End
Item	Encroachments			39.583052 °	39.583052 °
				-121.807423 °	-121.807423 °
DWR ID	DWR_MA0005_02_f _ 2019_34				
Comment Code					
MA : Material					
Inspector Comment					
Remove broken metal and concrete pipes from the landside toe.					

No Photos

LM Start	6.47	Rating **	A/W	Issue No.	10	
LM End	6.47	Issue Type +	Ma	Location *		
Category	Supplemental			GPS Latitude/Longitude		
				Start	End	
Item	DWR UCIP LMA Responsibility			39.589146 °	39.589146 °	
				-121.800463 °	-121.800463 °	
DWR ID	1654					
Comment Code						
Inspector Comment						
FS_ID:58265						
DS_ID:1654						
EP_NO: N/A						
Repair Type: No Action Needed						
Crossing Status: Found						
UCIP Comments: 05/18/2017 Crossing appears to be in good condition. Pipe has been selected to be internally cleaned and inspected as part of the DMP project. (A. Freitag - DWR Sutter Yard)11/14/2016 Crossing appears to be in good condition. (A. Freitag - DWR Sutter Yard)05/23/2016 Crossing appears to be in good condition. (A. Freitag - DWR Sutter Yard)07/28/2015 Crossing appears in good condition. No noticeable issues to report. (A. Freitag - DWR Sutter Yard)11/24/2014 Same as last inspection. (A. Freitag - DWR Sutter Yard)06/04/2014 Same as last inspection. (A. Freitag - DWR Sutter Yard)11/12/2013 Same as last inspection. (A. Freitag - DWR Sutter Yard)06/06/2013 Same as last inspection. (A. Freitag - DWR Sutter Yard)						
FIELD_STRUCT_DESC: 24-inch corrugated metal drainage pipe through the levee, 9.4 feet below the crown. Flap gate on the waterside (WS). Concrete headwalls at both the landside (LS) and the WS toes. [Additional Reference(s): DWR Levee Log, 1990 (HLM 6.56). USACE Sacramento O&M Manual, Unit 515 - Upper Butte Creek - Part No. 1, April 1955, (Station 627+00). USACE As-Built Drawing No. 50-4-2637, Exhibit B, Sheet 3, April 1950].						
FS Date: 6/1/2017 1:10:00 PM						

Photo 1 of 3 : UCIP_SP_2021_58265_68122.jpg



Flap gate on WS toe.

* Location LS : Land Side N/A : Not Applicable WS : Water Side CR : Crown	** Rating A : Acceptable M : Minimally Acceptable U : Unacceptable	N : Not Inspected/Rated C : Corrected A/W : Acceptable but Monitor & Maintain	+ Issue Type Ma : Maintenance Deficiency Ob : Design & System Obsolescence En : Enforcement
--	--	---	---

**Flood Control Project Maintenance
Levee Inspections**

Levee Inspection Report By Mile - Spring 2021

Sutter Maintenance Yard Maintenance Area 0005

Waterway	Bank	Unit Miles	Inspection Start/End	Inspector
Unit No. 02 Butte Creek	Right	16.27	03/24/2021 03/24/2021	Makar Sokol

LM Start	6.47	Rating **	A/W	Issue No.	10 (cont)	
LM End	6.47	Issue Type +	Ma	Location *		
Category	Supplemental			GPS Latitude/Longitude		
				Start	End	
Item	DWR UCIP LMA Responsibility			39.589146 °	39.589146 °	
				-121.800463 °	-121.800463 °	
DWR ID	1654					

Photo 2 of 3 : UCIP_SP_2021_58265_68121.jpg



Headwall on LS toe.

LM Start	6.47	Rating **	A/W	Issue No.	10 (cont)
LM End	6.47	Issue Type +	Ma	Location *	

Photo 3 of 3 : UCIP_SP_2021_58265_68120.jpg



Headwall on LS toe.

LM Start	7.74	Rating **	C	Issue No.	53
LM End	7.74	Issue Type +	Ma	Location *	LS
Category	Earthen Levee			GPS Latitude/Longitude	
				Start	End
Item	Animal Control			39.605088 °	39.605088 °
				-121.788569 °	-121.788569 °
DWR ID	DWR_MA0005_02_f_2016_53				
Comment Code					
A1 : Exterminate rodents and backfill and compact or grout burrows.					
Inspector Comment					

No Photos

* Location LS : Land Side N/A : Not Applicable WS : Water Side CR : Crown	** Rating A : Acceptable M : Minimally Acceptable U : Unacceptable	N : Not Inspected/Rated C : Corrected A/W : Acceptable but Monitor & Maintain	+ Issue Type Ma : Maintenance Deficiency Ob : Design & System Obsolescence En : Enforcement
--	--	---	---

**Flood Control Project Maintenance
Levee Inspections**

Levee Inspection Report By Mile - Spring 2021

Sutter Maintenance Yard Maintenance Area 0005

Waterway	Bank	Unit Miles	Inspection Start/End	Inspector
Unit No. 02 Butte Creek	Right	16.27	03/24/2021 03/24/2021	Makar Sokol

LM Start	7.75	Rating **	M	Issue No.	35
LM End	7.75	Issue Type +	En	Location *	LS
Category	Earthen Levee			GPS Latitude/Longitude	
				Start	End
Item	Encroachments			39.605205 °	39.605205 °
				-121.788453 °	-121.788453 °
DWR ID	DWR_MA0005_02_s_2015_35				
Comment Code					
PR : Prunings					
Inspector Comment					
Remove the prunings from the landside toe.					

Photo 1 of 1 : SP_2021_MA0005_197_35_20210224_00007.jpg



View of the prunings along the landside toe. Fall 2020.

LM Start	7.90	Rating **	M	Issue No.	58
LM End	7.90	Issue Type +	Ma	Location *	LS
Category	Earthen Levee			GPS Latitude/Longitude	
				Start	End
Item	Animal Control			39.607030 °	39.607030 °
				-121.787067 °	-121.787067 °
DWR ID	DWR_MA0005_02_f_2019_58				
Comment Code					
A3 : No rodents visible, but rodent burrows visible; need to backfill and compact or grout burrows.					
Inspector Comment					

No Photos

*** Location**
 LS : Land Side N/A : Not Applicable
 WS : Water Side
 CR : Crown

**** Rating**
 A : Acceptable N : Not Inspected/Rated
 M : Minimally Acceptable C : Corrected
 U : Unacceptable A/W : Acceptable but Monitor & Maintain

+ Issue Type
 Ma : Maintenance Deficiency
 Ob : Design & System Obsolescence
 En : Enforcement

**Flood Control Project Maintenance
Levee Inspections**

Levee Inspection Report By Mile - Spring 2021

Sutter Maintenance Yard Maintenance Area 0005

Waterway	Bank	Unit Miles	Inspection Start/End	Inspector
Unit No. 02 Butte Creek	Right	16.27	03/24/2021 03/24/2021	Makar Sokol

LM Start	8.00	Rating **	M	Issue No.	11
LM End	8.00	Issue Type +	Ma	Location *	
Category	Supplemental		GPS Latitude/Longitude		
			Start	End	
Item	DWR UCIP LMA Responsibility		39.607802 °	39.607802 °	
			-121.785597 °	-121.785597 °	
DWR ID	1656				

Comment Code

Inspector Comment

FS_ID:58269
DS_ID:1656
EP_NO: N/A
Repair Type: Non-Urgent
Crossing Status: Found
UCIP Comments: 05/18/2017 LS inlet is almost completely full of soil. Pipe has been selected to be internally cleaned and inspected as part of the DMP project. (A. Freitag - DWR Sutter Yard)11/14/2016 LS inlet almost completely full of soil. (A. Freitag - DWR Sutter Yard)05/23/2016 LS end is almost completel full of soil. (A. Freitag - DWR Sutter Yard)07/28/2015 Pipe is still over 3/4 full of soil. (A. Freitag - DWR Sutter Yard)11/24/2014 Same as last inspection. (A. Freitag - DWR Sutter Yard)06/04/2014 Same as last inspection. (A. Freitag - DWR Sutter Yard)11/12/2013 Same as last inspection. (A. Freitag - DWR Sutter Yard)06/06/2013 Same as last inspection. (A. Freitag - DWR Sutter Yard)10/31/2012 Pipe 3/4 full with soil on LS. (W. Wylie - DWR UCIP)
FIELD_STRUCT_DESC: 18-inch corrugated metal drainage pipe through the levee at an unknown depth below the crown. Concrete headwall at the landside (LS) toe. Flap gate on the waterside (WS).
[Additional Reference(s): USACE Sacramento O&M Manual, Unit 515 - Upper Butte Creek - Part No. 1, April 1955, pipe referenced only in USACE As-Built Drawing No. 50-4-2637, Exhibit B, Sheet 2, April 1950, (Station 550+42)].
FS Date: 6/1/2017 1:15:00 PM

LM Start	8.00	Rating **	M	Issue No.	11 (cont)
LM End	8.00	Issue Type +	Ma	Location *	

Photo 1 of 2 : UCIP_SP_2021_58269_68129.jpg



Flap gate at WS toe.

Photo 2 of 2 : UCIP_SP_2021_58269_68128.jpg



Concrete headwall on LS toe.

* Location LS : Land Side N/A : Not Applicable WS : Water Side CR : Crown	** Rating A : Acceptable M : Minimally Acceptable U : Unacceptable	N : Not Inspected/Rated C : Corrected A/W : Acceptable but Monitor & Maintain	+ Issue Type Ma : Maintenance Deficiency Ob : Design & System Obsolescence En : Enforcement
--	--	--	---

**Flood Control Project Maintenance
Levee Inspections**

Levee Inspection Report By Mile - Spring 2021

Sutter Maintenance Yard Maintenance Area 0005

Waterway	Bank	Unit Miles	Inspection Start/End	Inspector
Unit No. 02 Butte Creek	Right	16.27	03/24/2021 03/24/2021	Makar Sokol

LM Start	8.11	Rating **	A/W	Issue No.	12
LM End	8.11	Issue Type +	Ma	Location *	
Category	Supplemental			GPS Latitude/Longitude	
				Start	End
Item	DWR UCIP LMA Responsibility			39.609162 °	39.609162 °
				-121.784647 °	-121.784647 °
DWR ID	1662				

Comment Code

Inspector Comment

FS_ID:58277
DS_ID:1662
EP_NO: N/A
Repair Type: No Action Needed
Crossing Status: Found
UCIP Comments: 05/18/2017 Crossing appears to be in good condition. Pipe has been selected to be internally cleaned and inspected as part of the DMP project. (A. Freitag - DWR Sutter Yard)11/14/2016 Crossing appears to be in good condition. (A. Freitag - DWR Sutter Yard)05/12/2016 Crossing appears to be in good condition. (A. Freitag - DWR Sutter Yard)07/30/2015 Crossing is in good condition. No noticeable issues to report. (A. Freitag - DWR Sutter Yard)11/24/2014 Same as last inspection. (A. Freitag - DWR Sutter Yard)06/04/2014 Same as last inspection. (A. Freitag - DWR Sutter Yard)11/13/2013 Same as last inspection. (A. Freitag - DWR Sutter Yard)06/06/2013 Same as last inspection. (A. Freitag - DWR Sutter Yard)
FIELD_STRUCT_DESC: 30-inch corrugated metal drainage pipe through the levee, 16.3 feet below the crown. Flap gate on the waterside (WS). Concrete "U" shaped headwalls on both the landside (LS) and the WS. [Additional Reference(s): DWR Levee Log, 1990 (HLM 8.21). USACE Sacramento O&M Manual, Unit 516 - Upper Butte Creek - Part No. 2, April 1960, (Station 374+90). USACE As-Built Drawing No. 50-4-3367, Exhibit B, Sheet 13, April 1957].
FS Date: 6/1/2017 1:25:00 PM

LM Start	8.11	Rating **	A/W	Issue No.	12 (cont)
LM End	8.11	Issue Type +	Ma	Location *	

Photo 1 of 3 : UCIP_SP_2021_58277_68394.jpg



Concrete inlet on LS toe.

Photo 2 of 3 : UCIP_SP_2021_58277_68393.jpg



Concrete inlet on LS toe.

* Location LS : Land Side N/A : Not Applicable WS : Water Side CR : Crown		** Rating A : Acceptable N : Not Inspected/Rated M : Minimally Acceptable C : Corrected U : Unacceptable A/W : Acceptable but Monitor & Maintain		+ Issue Type Ma : Maintenance Deficiency Ob : Design & System Obsolescence En : Enforcement	
--	--	---	--	---	--

**Flood Control Project Maintenance
Levee Inspections**

Levee Inspection Report By Mile - Spring 2021

Sutter Maintenance Yard Maintenance Area 0005

Waterway	Bank	Unit Miles	Inspection Start/End	Inspector
Unit No. 02 Butte Creek	Right	16.27	03/24/2021 03/24/2021	Makar Sokol

LM Start	8.11	Rating **	A/W	Issue No.	12 (cont)	
LM End	8.11	Issue Type +	Ma	Location *		
Category	Supplemental			GPS Latitude/Longitude		
				Start		End
Item	DWR UCIP LMA Responsibility			39.609162 °		39.609162 °
				-121.784647 °		-121.784647 °
DWR ID	1662					

Photo 3 of 3 : UCIP_SP_2021_58277_68392.jpg



Concrete outlet and flap gate on WS toe.

LM Start	8.76	Rating **	C	Issue No.	73
LM End	8.76	Issue Type +	Ma	Location *	LS
Category	Earthen Levee			GPS Latitude/Longitude	
				Start	End
Item	Animal Control			39.617598 °	39.617598 °
				-121.779100 °	-121.779100 °
DWR ID	DWR_MA0005_02_f_2019_73				
Comment Code					
A3 : No rodents visible, but rodent burrows visible; need to backfill and compact or grout burrows.					
Inspector Comment					

No Photos

* Location LS : Land Side N/A : Not Applicable WS : Water Side CR : Crown	** Rating A : Acceptable M : Minimally Acceptable U : Unacceptable	N : Not Inspected/Rated C : Corrected A/W : Acceptable but Monitor & Maintain	+ Issue Type Ma : Maintenance Deficiency Ob : Design & System Obsolescence En : Enforcement
--	--	---	---

**Flood Control Project Maintenance
Levee Inspections**

Levee Inspection Report By Mile - Spring 2021

Sutter Maintenance Yard Maintenance Area 0005

Waterway	Bank	Unit Miles	Inspection Start/End	Inspector
Unit No. 02 Butte Creek	Right	16.27	03/24/2021 03/24/2021	Makar Sokol

LM Start	8.77	Rating **	A/W	Issue No.	13
LM End	8.77	Issue Type +	Ma	Location *	
Category	Supplemental			GPS Latitude/Longitude	
				Start	End
Item	DWR UCIP LMA Responsibility			39.617747 °	39.617747 °
				-121.778964 °	-121.778964 °
DWR ID	1663				

Comment Code

Inspector Comment

FS_ID:58279
DS_ID:1663
EP_NO: N/A
Repair Type: No Action Needed
Crossing Status: Found
UCIP Comments: 05/18/2017 Crossing appears to be in good condition. Pipe has been selected to be internally cleaned and inspected as part of the DMP project. (A. Freitag - DWR Sutter Yard)11/14/2016 Crossing appears to be in good condition. (A. Freitag - DWR Sutter Yard)05/12/2016 Crossing appears to be in good condition. (A. Freitag - DWR Sutter Yard)07/30/2015 Crossing appears in good condition. No noticeable issues to report. (A. Freitag - DWR Sutter Yard)11/24/2014 Same as last inspection. (A. Freitag - DWR Sutter Yard)06/04/2014 Same as last inspection. (A. Freitag - DWR Sutter Yard)11/13/2013 Damaged pipe section was dug up and replaced. New WS flapgate with u-shaped wingwall installed on end of pipe. (A. Freitag - DWR Sutter Yard)06/06/2013 Same as last inspection. Plans have been made to repair during summer of 2013 before high water season. (A. Freitag - DWR Sutter Yard)11/01/2012 Pipe rusted through along bottom at WS outlet. Sink hole over pipe on WS berm. WS headwall eroded eternally around backside of headwall. (W. Wylie - DWR UCIP)
FIELD_STRUCT_DESC: 24-inch corrugated metal drainage pipe through the levee, 15 feet below the crown. Flap gate on the waterside (WS). Concrete headwalls on both the landside (LS) and the WS. [Additional Reference(s): DWR Levee Log, 1990 (HLM 8.89). USACE Sacramento O&M Manual, Unit 516 - Upper Butte Creek - Part No. 2, April 1960, pipe is only referenced in USACE As-Built Drawing No. 50-4-3367, Exhibit B, Sheet 11, (Station 340+04)].
FS Date: 6/1/2017 1:27:00 PM

Photo 1 of 3 : UCIP_SP_2021_58279_68397.jpg



Concrete U-shaped headwall on LS toe.

* Location	** Rating	+ Issue Type
LS : Land Side N/A : Not Applicable WS : Water Side CR : Crown	A : Acceptable M : Minimally Acceptable U : Unacceptable N : Not Inspected/Rated C : Corrected A/W : Acceptable but Monitor & Maintain	Ma : Maintenance Deficiency Ob : Design & System Obsolescence En : Enforcement

**Flood Control Project Maintenance
Levee Inspections**

Levee Inspection Report By Mile - Spring 2021

Sutter Maintenance Yard Maintenance Area 0005

Waterway	Bank	Unit Miles	Inspection Start/End	Inspector
Unit No. 02 Butte Creek	Right	16.27	03/24/2021 03/24/2021	Makar Sokol

LM Start	8.77	Rating **	A/W	Issue No.	13 (cont)
LM End	8.77	Issue Type +	Ma	Location *	
Category	Supplemental			GPS Latitude/Longitude	
				Start	End
Item	DWR UCIP LMA Responsibility			39.617747 °	39.617747 °
				-121.778964 °	-121.778964 °
DWR ID	1663				

Photo 2 of 3 : UCIP_SP_2021_58279_68396.jpg



Concrete U-shaped headwall on LS toe.

LM Start	8.77	Rating **	A/W	Issue No.	13 (cont)
LM End	8.77	Issue Type +	Ma	Location *	

Photo 3 of 3 : UCIP_SP_2021_58279_68395.jpg



Concrete U shaped outlet and flap gate at WS of Berm.

* Location LS : Land Side N/A : Not Applicable WS : Water Side CR : Crown	** Rating A : Acceptable M : Minimally Acceptable U : Unacceptable	N : Not Inspected/Rated C : Corrected A/W : Acceptable but Monitor & Maintain	+ Issue Type Ma : Maintenance Deficiency Ob : Design & System Obsolescence En : Enforcement
--	--	---	---

**Flood Control Project Maintenance
Levee Inspections**

Levee Inspection Report By Mile - Spring 2021

Sutter Maintenance Yard Maintenance Area 0005

Waterway	Bank	Unit Miles	Inspection Start/End	Inspector
Unit No. 02 Butte Creek	Right	16.27	03/24/2021 03/24/2021	Makar Sokol

LM Start	8.80	Rating **	M	Issue No.	14
LM End	8.80	Issue Type +	Ma	Location *	
Category	Supplemental			GPS Latitude/Longitude	
				Start	End
Item	DWR UCIP LMA Responsibility			39.618163 °	39.618163 °
				-121.778745 °	-121.778745 °
DWR ID	1664				

Comment Code

Inspector Comment

FS_ID:58280
DS_ID:1664
EP_NO: N/A
Repair Type: Non-Urgent
Crossing Status: Found
UCIP Comments: 05/18/2017 No LS slide gate but not sure its even needed. Pipe has been selected to be internally cleaned and inspected as part of the DMP project. (A. Freitag - DWR Sutter Yard)11/14/2016 LS slide gate still missing. Rest of crossing appears in good condition. (A. Freitag - DWR Sutter Yard)05/12/2016 LS inlet was unburied. Slide gate still missing. (A. Freitag - DWR Sutter Yard)07/30/2015 LS inlet is still buried. (A. Freitag - DWR Sutter Yard)11/24/2014 Same as last inspection. (A. Freitag - DWR Sutter Yard)06/04/2014 Same as last inspection. (A. Freitag - DWR Sutter Yard)11/13/2013 Same as last inspection. (A. Freitag - DWR Sutter Yard)06/06/2013 Same as last inspection. (A. Freitag - DWR Sutter Yard)11/01/2012 LS inlet is buried under soil and covered with brambles. Slide gate missing from LS. (W. Wylie - DWR UCIP)
FIELD_STRUCT_DESC: 24-inch corrugated metal drainage pipe through the levee, 12 feet below the crown. Flap gate on the waterside (WS). Concrete headwall on the WS. Concrete headwall on the landside (LS), not found. [Additional Reference(s): DWR Levee Log, 1990 (HLM 8.93). USACE Sacramento O&M Manual, Unit 516 - Upper Butte Creek - Part No. 2, April 1960, (Station 338+04). USACE As-Built Drawing No. 50-4-3367, Exhibit B, Sheet 11, April 1957].
FS Date: 6/1/2017 1:29:00 PM

LM Start	8.80	Rating **	M	Issue No.	14 (cont)
LM End	8.80	Issue Type +	Ma	Location *	

Photo 1 of 3 : UCIP_SP_2021_58280_68406.jpg



WS outlet and concrete U shaped headwall.

Photo 2 of 3 : UCIP_SP_2021_58280_68404.jpg



Brambles and soil over pipe at inlet.

* Location LS : Land Side N/A : Not Applicable WS : Water Side CR : Crown	** Rating A : Acceptable M : Minimally Acceptable U : Unacceptable	N : Not Inspected/Rated C : Corrected A/W : Acceptable but Monitor & Maintain	+ Issue Type Ma : Maintenance Deficiency Ob : Design & System Obsolescence En : Enforcement
--	--	--	---

**Flood Control Project Maintenance
Levee Inspections**

Levee Inspection Report By Mile - Spring 2021

Sutter Maintenance Yard Maintenance Area 0005

Waterway	Bank	Unit Miles	Inspection Start/End	Inspector
Unit No. 02 Butte Creek	Right	16.27	03/24/2021 03/24/2021	Makar Sokol

LM Start	8.80	Rating **	M	Issue No.	14 (cont)
LM End	8.80	Issue Type +	Ma	Location *	
Category	Supplemental			GPS Latitude/Longitude	
				Start	End
Item	DWR UCIP LMA Responsibility			39.618163 °	39.618163 °
				-121.778745 °	-121.778745 °
DWR ID	1664				

Photo 3 of 3 : UCIP_SP_2021_58280_68403.jpg



Concrete U shaped headwall and flap gate at WS toe.

LM Start	9.09	Rating **	M	Issue No.	45
LM End	9.09	Issue Type +	En	Location *	LS
Category	Earthen Levee			GPS Latitude/Longitude	
				Start	End
Item	Encroachments			39.622017 °	39.622017 °
				-121.776552 °	-121.776552 °
DWR ID	DWR_MA0005_02_s_2016_45				
Comment Code					
EQ : Equipment					
Inspector Comment					
Materials and equipment should be removed from the landside toe.					

Photo 1 of 1 : SP_2021_MA0005_197_45_20210224_00010.jpg



View of equipment and materials from the landside toe.

*** Location**
LS : Land Side N/A : Not Applicable
WS : Water Side
CR : Crown

**** Rating**
A : Acceptable N : Not Inspected/Rated
M : Minimally Acceptable C : Corrected
U : Unacceptable A/W : Acceptable but Monitor & Maintain

+ Issue Type
Ma : Maintenance Deficiency
Ob : Design & System Obsolescence
En : Enforcement

**Flood Control Project Maintenance
Levee Inspections**

Levee Inspection Report By Mile - Spring 2021

Sutter Maintenance Yard Maintenance Area 0005

Waterway	Bank	Unit Miles	Inspection Start/End	Inspector
Unit No. 02 Butte Creek	Right	16.27	03/24/2021 03/24/2021	Makar Sokol

LM Start	9.12	Rating **	A/W	Issue No.	15
LM End	9.12	Issue Type +	Ma	Location *	
Category	Supplemental			GPS Latitude/Longitude	
				Start	End
Item	DWR UCIP LMA Responsibility			39.622377 °	39.622377 °
				-121.776327 °	-121.776327 °
DWR ID	1665				

Comment Code

Inspector Comment

FS_ID:58281
DS_ID:1665
EP_NO: N/A
Repair Type: No Action Needed
Crossing Status: Found
UCIP Comments: 05/18/2017 Crossing appears to be in good condition. Pipe has been selected to be internally cleaned and inspected as part of the DMP project. (A. Freitag - DWR Sutter Yard)11/14/2016 Crossing appears to be in good condition. (A. Freitag - DWR Sutter Yard)05/12/2016 Crossing appears to be in good condition. (A. Freitag - DWR Sutter Yard)07/30/2015 Crossing appears in good condition. No noticeable issues to report. (A. Freitag - DWR Sutter Yard)11/24/2014 Same as last inspection. (A. Freitag - DWR Sutter Yard)06/04/2014 Same as last inspection. (A. Freitag - DWR Sutter Yard)11/13/2013 Same as last inspection. (A. Freitag - DWR Sutter Yard)06/06/2013 Same as last inspection. (A. Freitag - DWR Sutter Yard)
FIELD_STRUCT_DESC: 24-inch corrugated metal drainage pipe through the levee, 11.3 feet below the crown. Flap gate on the waterside (WS). Concrete headwalls on both the landside (LS) and the WS. [Additional Reference(s): DWR Levee Log, 1990 (HLM 9.25). USACE Sacramento O&M Manual, Unit 516 - Upper Butte Creek - Part No. 2, April 1960, (Station 321+20)].
FS Date: 6/1/2017 1:32:00 PM

LM Start	9.12	Rating **	A/W	Issue No.	15 (cont)
LM End	9.12	Issue Type +	Ma	Location *	

Photo 1 of 3 : UCIP_SP_2021_58281_68413.jpg



Concrete U shaped headwall and flap gate on WS toe.

Photo 2 of 3 : UCIP_SP_2021_58281_68412.jpg



Concrete U shaped headwall on LS toe.

* Location LS : Land Side N/A : Not Applicable WS : Water Side CR : Crown	** Rating A : Acceptable M : Minimally Acceptable U : Unacceptable	N : Not Inspected/Rated C : Corrected A/W : Acceptable but Monitor & Maintain	+ Issue Type Ma : Maintenance Deficiency Ob : Design & System Obsolescence En : Enforcement
--	--	--	---

**Flood Control Project Maintenance
Levee Inspections**

Levee Inspection Report By Mile - Spring 2021

Sutter Maintenance Yard Maintenance Area 0005

Waterway	Bank	Unit Miles	Inspection Start/End	Inspector
Unit No. 02 Butte Creek	Right	16.27	03/24/2021 03/24/2021	Makar Sokol

LM Start	9.12	Rating **	A/W	Issue No.	15 (cont)
LM End	9.12	Issue Type +	Ma	Location *	
Category	Supplemental		GPS Latitude/Longitude		
			Start	End	
Item	DWR UCIP LMA Responsibility		39.622377 °	39.622377 °	
			-121.776327 °	-121.776327 °	
DWR ID	1665				

Photo 3 of 3 : UCIP_SP_2021_58281_68411.jpg



Concrete U shaped headwall on LS toe.

LM Start	9.44	Rating **	M	Issue No.	16
LM End	9.44	Issue Type +	Ma	Location *	
Category	Supplemental		GPS Latitude/Longitude		
			Start	End	
Item	DWR UCIP LMA Responsibility		39.626894 °	39.626894 °	
			-121.775180 °	-121.775180 °	
DWR ID	1666				

Comment Code

Inspector Comment

FS_ID:58282
DS_ID:1666
EP_NO: N/A
Repair Type: Non-Urgent
Crossing Status: Found
UCIP Comments: 05/18/2017 LS inlet half full of soil and WS flap gate half buried by sediment. Pipe has been selected to be internally cleaned and inspected as part of the DMP project. (A. Freitag - DWR Sutter Yard)11/14/2016 LS pipe inlet is half full of soil. WS flap gate shut but half buried by sediment. (A. Freitag - DWR Sutter Yard)05/12/2016 Pipe is half full of soil. (A. Freitag - DWR Sutter Yard)07/30/2015 Pipe is 1/4 to 1/2 full of soil still. (A. Freitag - DWR Sutter Yard)11/24/2014 Same as last inspection. (A. Freitag - DWR Sutter Yard)06/04/2014 Same as last inspection. (A. Freitag - DWR Sutter Yard)11/13/2013 Same as last inspection. (A. Freitag - DWR Sutter Yard)06/06/2013 Same as last inspection. (A. Freitag - DWR Sutter Yard)11/01/2012 Pipe 1/2 filled with soil. (W. Wylie - DWR UCIP)
FIELD_STRUCT_DESC: 24-inch corrugated metal drainage pipe through the levee, 11.2 feet below the crown. Flap gate on the waterside (WS). Concrete "U" shaped headwalls on both the landside (LS) and the WS. [Additional Reference(s): DWR Levee Log, 1990 (HLM 9.57). USACE Sacramento O&M Manual, Unit 516 - Upper Butte Creek - Part No. 2, April 1960, (Station 304+10). USACE As-Built Drawing No. 50-4-3367, Exhibit B, Sheet 3, April 1957].
FS Date: 6/1/2017 1:34:00 PM

Photo 1 of 3 : UCIP_SP_2021_58282_68417.jpg



View of outlet looking toward WS toe.

* Location LS : Land Side N/A : Not Applicable WS : Water Side CR : Crown	** Rating A : Acceptable M : Minimally Acceptable U : Unacceptable	N : Not Inspected/Rated C : Corrected A/W : Acceptable but Monitor & Maintain	+ Issue Type Ma : Maintenance Deficiency Ob : Design & System Obsolescence En : Enforcement
--	--	---	---

**Flood Control Project Maintenance
Levee Inspections**

Levee Inspection Report By Mile - Spring 2021

Sutter Maintenance Yard Maintenance Area 0005

Waterway	Bank	Unit Miles	Inspection Start/End	Inspector
Unit No. 02 Butte Creek	Right	16.27	03/24/2021 03/24/2021	Makar Sokol

LM Start	9.44	Rating **	M	Issue No.	16 (cont)
LM End	9.44	Issue Type +	Ma	Location *	
Category	Supplemental			GPS Latitude/Longitude	
				Start	End
Item	DWR UCIP LMA Responsibility			39.626894 °	39.626894 °
				-121.775180 °	-121.775180 °
DWR ID	1666				

Photo 2 of 3 : UCIP_SP_2021_58282_68416.jpg



View of inlet on LS toe.

LM Start	9.44	Rating **	M	Issue No.	16 (cont)
LM End	9.44	Issue Type +	Ma	Location *	

Photo 3 of 3 : UCIP_SP_2021_58282_68415.jpg



Concrete U-shaped headwall on LS toe.

LM Start	9.75	Rating **	M	Issue No.	37
LM End	9.75	Issue Type +	En	Location *	LS
Category	Earthen Levee			GPS Latitude/Longitude	
				Start	End
Item	Encroachments			39.631360 °	39.631360 °
				-121.775169 °	-121.775169 °
DWR ID	DWR_MA0005_02_s_2021_37				
Comment Code					
PR : Prunings					
Inspector Comment					

No Photos

* Location LS : Land Side N/A : Not Applicable WS : Water Side CR : Crown	** Rating A : Acceptable M : Minimally Acceptable U : Unacceptable	N : Not Inspected/Rated C : Corrected A/W : Acceptable but Monitor & Maintain	+ Issue Type Ma : Maintenance Deficiency Ob : Design & System Obsolescence En : Enforcement
--	--	---	---

**Flood Control Project Maintenance
Levee Inspections**

Levee Inspection Report By Mile - Spring 2021

Sutter Maintenance Yard Maintenance Area 0005

Waterway	Bank	Unit Miles	Inspection Start/End	Inspector
Unit No. 02 Butte Creek	Right	16.27	03/24/2021 03/24/2021	Makar Sokol

LM Start	10.47	Rating **	M	Issue No.	57
LM End	10.47	Issue Type +	En	Location *	LS
Category	Earthen Levee			GPS Latitude/Longitude	
				Start	End
Item	Encroachments			39.640156 °	39.640156 °
				-121.782397 °	-121.782397 °
DWR ID	DWR_MA0005_02_f _ 2016_57				
Comment Code					
FW : Firewood					
Inspector Comment					
Remove broken concrete pipes and firewood from the landside toe.					

No Photos

LM Start	10.63	Rating **	M	Issue No.	18
LM End	10.63	Issue Type +	Ma	Location *	LS
Category	Earthen Levee			GPS Latitude/Longitude	
				Start	End
Item	Slope Stability			39.642061 °	39.642061 °
				-121.783861 °	-121.783861 °
DWR ID	DWR_MA0005_02_s_2012_18				
Comment Code					
S3 : Repair the levee slope damaged by vehicle traffic and prevent access where possible.					
Inspector Comment					

Photo 1 of 1 : SP_2021_MA0005_197_18_20210224_00005.jpg



View of the vehicle erosion along the landside slope. Spring 2020.

LM Start	10.90	Rating **	U	Issue No.	41
LM End	10.93	Issue Type +	En	Location *	LS
Category	Earthen Levee			GPS Latitude/Longitude	
				Start	End
Item	Encroachments			39.645508 °	39.645858 °
				-121.786515 °	-121.786742 °
DWR ID	DWR_MA0005_02_f_2014_41				
Comment Code					
FE : Fence					
Inspector Comment					
Remove or apply for permit for the fence along landside toe					

Photo 1 of 1 : SP_2021_MA0005_197_41_20210224_00009.jpg



View of the fence along the landside toe. Spring 2020.

* Location
LS : Land Side N/A : Not Applicable
WS : Water Side
CR : Crown

** Rating
A : Acceptable N : Not Inspected/Rated
M : Minimally Acceptable C : Corrected
U : Unacceptable A/W : Acceptable but Monitor & Maintain

+ Issue Type
Ma : Maintenance Deficiency
Ob : Design & System Obsolescence
En : Enforcement

**Flood Control Project Maintenance
Levee Inspections**

Levee Inspection Report By Mile - Spring 2021

Sutter Maintenance Yard Maintenance Area 0005

Waterway	Bank	Unit Miles	Inspection Start/End	Inspector
Unit No. 02 Butte Creek	Right	16.27	03/24/2021 03/24/2021	Makar Sokol

LM Start	10.95	Rating **	M	Issue No.	59
LM End	10.99	Issue Type +	Ma	Location *	LS
Category	Earthen Levee			GPS Latitude/Longitude	
				Start	End
Item	Trim / Thin Trees			39.646036 °	39.646598 °
				-121.786944 °	-121.787365 °
DWR ID	DWR_MA0005_02_f _ 2016_59				
Comment Code					
T1 : Trim trees to at least five feet above ground level.					
Inspector Comment					

No Photos

LM Start	10.98	Rating **	U	Issue No.	60
LM End	11.04	Issue Type +	En	Location *	LS
Category	Earthen Levee			GPS Latitude/Longitude	
				Start	End
Item	Encroachments			39.646523 °	39.647238 °
				-121.787310 °	-121.787866 °
DWR ID	DWR_MA0005_02_f _ 2016_60				
Comment Code					
FE : Fence					
Inspector Comment					

Photo 1 of 1 : SP_2021_MA0005_197_60_20210224_00015.jpg



View of a wooden fence along the landside toe. Fall 2020.

LM Start	11.05	Rating **	M	Issue No.	26
LM End	11.05	Issue Type +	Ma	Location *	LS
Category	Earthen Levee			GPS Latitude/Longitude	
				Start	End
Item	Vegetation			39.647400 °	39.647400 °
				-121.787825 °	-121.787825 °
DWR ID	DWR_MA0005_02_f_2012_26				
Comment Code					
V4 : Elderberries are blocking visibility and flood fight capability.					
Inspector Comment					

No Photos

* Location		** Rating		+ Issue Type	
LS : Land Side N/A : Not Applicable		A : Acceptable		Ma : Maintenance Deficiency	
WS : Water Side		M : Minimally Acceptable		Ob : Design & System Obsolescence	
CR : Crown		U : Unacceptable		En : Enforcement	
		N : Not Inspected/Rated			
		C : Corrected			
		A/W : Acceptable but Monitor & Maintain			

**Flood Control Project Maintenance
Levee Inspections**

Levee Inspection Report By Mile - Spring 2021

Sutter Maintenance Yard Maintenance Area 0005

Waterway	Bank	Unit Miles	Inspection Start/End	Inspector
Unit No. 02 Butte Creek	Right	16.27	03/24/2021 03/24/2021	Makar Sokol

LM Start	11.12	Rating **	M	Issue No.	17
LM End	11.12	Issue Type +	En	Location *	
Category	Supplemental			GPS Latitude/Longitude	
				Start	End
Item	DWR UCIP Field Study			39.648169 °	39.648169 °
				-121.788541 °	-121.788541 °
DWR ID	1670				

Comment Code

Inspector Comment

FS_ID:58287
DS_ID:1670
EP_NO: N/A
Repair Type: Non-Urgent
Crossing Status: Found
UCIP Comments: 05/18/2017 Appears abandoned- Slide gates in WS riser and LS distribution box missing. Pipe has been selected to be internally cleaned and inspected as part of the DMP project. (A. Freitag - DWR Sutter Yard)11/14/2016 Appears abandoned- Slide gates in WS riser and LS distribution box missing. (A. Freitag - DWR Sutter Yard)05/11/2016 Crossing appears to be in good condition. (A. Freitag - DWR Sutter Yard)07/30/2015 Crossing appears in good condition. No noticeable issues to report. (A. Freitag - DWR Sutter Yard)11/24/2014 Same as last inspection. (A. Freitag - DWR Sutter Yard)06/04/2014 Same as last inspection. (A. Freitag - DWR Sutter Yard)11/13/2013 Same as last inspection. (A. Freitag - DWR Sutter Yard)06/06/2013 New flap gate installed on WS end of pipe. (A. Freitag - DWR Sutter Yard)
FIELD_STRUCT_DESC: 24-inch corrugated metal irrigation pipe through the levee, 9.7 feet below the crown. Slide gate in corrugated metal riser on the waterside (WS) slope. Flap gate on the WS toe. Slide gate in concrete distribution box on the landside (LS). [Additional Reference(s): DWR Levee Log, 1990 (HLM 11.27). USACE Sacramento O&M Manual, Unit 516 - Upper Butte Creek - Part No. 2, April 1960, (Station 215+65), 20-inch pipe referenced. USACE As-Built Drawing No. 50-4-3367, Exhibit B, Sheet 2, April 1957, drawing shows 18-inch pipe].
FS Date: 6/1/2017 1:43:00 PM

Photo 1 of 3 : UCIP_SP_2021_58287_68429.jpg



CM riser on WS shoulder-missing slide gate.

* Location LS : Land Side N/A : Not Applicable WS : Water Side CR : Crown	** Rating A : Acceptable M : Minimally Acceptable U : Unacceptable	N : Not Inspected/Rated C : Corrected A/W : Acceptable but Monitor & Maintain	+ Issue Type Ma : Maintenance Deficiency Ob : Design & System Obsolescence En : Enforcement
--	--	--	---

**Flood Control Project Maintenance
Levee Inspections**

Levee Inspection Report By Mile - Spring 2021

Sutter Maintenance Yard Maintenance Area 0005

Waterway	Bank	Unit Miles	Inspection Start/End	Inspector
Unit No. 02 Butte Creek	Right	16.27	03/24/2021 03/24/2021	Makar Sokol

LM Start	11.12	Rating **	M	Issue No.	17 (cont)
LM End	11.12	Issue Type +	En	Location *	
Category	Supplemental		GPS Latitude/Longitude		
			Start	End	
Item	DWR UCIP Field Study		39.648169 °	39.648169 °	
			-121.788541 °	-121.788541 °	
DWR ID	1670				

Photo 2 of 3 : UCIP_SP_2021_58287_68433.jpg



Distribution box on LS toe. Missing slide gate at pipe entrance.

LM Start	11.12	Rating **	M	Issue No.	17 (cont)
LM End	11.12	Issue Type +	En	Location *	

Photo 3 of 3 : UCIP_SP_2021_58287_68432.jpg



View of pipe from WS looking toward LS.

* Location LS : Land Side N/A : Not Applicable WS : Water Side CR : Crown	** Rating A : Acceptable M : Minimally Acceptable U : Unacceptable	N : Not Inspected/Rated C : Corrected A/W : Acceptable but Monitor & Maintain	+ Issue Type Ma : Maintenance Deficiency Ob : Design & System Obsolescence En : Enforcement
--	--	---	---

**Flood Control Project Maintenance
Levee Inspections**

Levee Inspection Report By Mile - Spring 2021

Sutter Maintenance Yard Maintenance Area 0005

Waterway	Bank	Unit Miles	Inspection Start/End	Inspector
Unit No. 02 Butte Creek	Right	16.27	03/24/2021 03/24/2021	Makar Sokol

LM Start	11.12	Rating **	M	Issue No.	19
LM End	11.12	Issue Type +	En	Location *	
Category	Supplemental			GPS Latitude/Longitude	
				Start	End
Item	DWR UCIP Field Study			39.648185 °	39.648185 °
				-121.788563 °	-121.788563 °
DWR ID	1671				

Comment Code

Inspector Comment

FS_ID:58288
DS_ID:1671
EP_NO: N/A
Repair Type: Non-Urgent
Crossing Status: Found
UCIP Comments: 05/18/2017 Abandoned- WS end still buried. (A. Freitag - DWR Sutter Yard)11/14/2016 Appears abandoned. (A. Freitag - DWR Sutter Yard)05/11/2016 Abandoned crossing. (A. Freitag - DWR Sutter Yard)07/30/2015 Abandoned crossing. Unable to locate the WS end of pipe. (A. Freitag - DWR Sutter Yard)11/24/2014 Same as last inspection. (A. Freitag - DWR Sutter Yard)06/04/2014 Same as last inspection. (A. Freitag - DWR Sutter Yard)11/13/2013 Same as last inspection. (A. Freitag - DWR Sutter Yard)06/06/2013 Same as last inspection. (A. Freitag - DWR Sutter Yard)11/01/2012 Pipe appears abandoned. It needs to be abandoned properly. (W. Wylie - DWR UCIP)
FIELD_STRUCT_DESC: 30-inch corrugated metal irrigation pipe through the levee, 9.4 feet below the crown. Slide gate in a 42-inch corrugated metal riser on the waterside (WS) slope. Concrete distribution box on the landside (LS). [Additional Reference(s): DWR Levee Log, 1990 (HLM 11.27). USACE Sacramento O&M Manual, Unit 516 - Upper Butte Creek - Part No. 2, April 1960, (Station 215+46)].
FS Date: 6/1/2017 1:45:00 PM

LM Start	11.12	Rating **	M	Issue No.	19 (cont)
LM End	11.12	Issue Type +	En	Location *	

Photo 1 of 3 : UCIP_SP_2021_58288_68436.jpg



Pipe at concrete distribution box on LS toe.

Photo 2 of 3 : UCIP_SP_2021_58288_68435.jpg



CM riser with slide gate on WS shoulder.

* Location LS : Land Side N/A : Not Applicable WS : Water Side CR : Crown		** Rating A : Acceptable M : Minimally Acceptable U : Unacceptable N : Not Inspected/Rated C : Corrected A/W : Acceptable but Monitor & Maintain		+ Issue Type Ma : Maintenance Deficiency Ob : Design & System Obsolescence En : Enforcement	
--	--	---	--	---	--

**Flood Control Project Maintenance
Levee Inspections**

Levee Inspection Report By Mile - Spring 2021

Sutter Maintenance Yard Maintenance Area 0005

Waterway	Bank	Unit Miles	Inspection Start/End	Inspector
Unit No. 02 Butte Creek	Right	16.27	03/24/2021 03/24/2021	Makar Sokol

LM Start	11.12	Rating **	M	Issue No.	19 (cont)	
LM End	11.12	Issue Type +	En	Location *		
Category	Supplemental			GPS Latitude/Longitude		
				Start		End
Item	DWR UCIP Field Study			39.648185 °	39.648185 °	
				-121.788563 °	-121.788563 °	
DWR ID	1671					

Photo 3 of 3 : UCIP_SP_2021_58288_68434.jpg



Concrete pipe at edge of creek on WS.

LM Start	11.23	Rating **	C	Issue No.	63
LM End	11.23	Issue Type +	En	Location *	LS
Category	Earthen Levee			GPS Latitude/Longitude	
				Start	End
Item	Encroachments			39.649627 °	39.649627 °
				-121.789668 °	-121.789668 °
DWR ID	DWR_MA0005_02_s_2020_63				
Comment Code					
PR : Prunings					
Inspector Comment					

No Photos

LM Start	11.27	Rating **	M	Issue No.	6
LM End	11.77	Issue Type +	En	Location *	LS
Category	Earthen Levee			GPS Latitude/Longitude	
				Start	End
Item	Encroachments			39.650046 °	39.657142 °
				-121.789945 °	-121.788690 °
DWR ID	DWR_MA0005_02_s_2012_6				
Comment Code					
DT : Ditch					
Inspector Comment					

Photo 1 of 1 : SP_2021_MA0005_197_6_20210224_00002.jpg



View of the ditch along the landside toe. Fall 2020.

* Location
LS : Land Side N/A : Not Applicable
WS : Water Side
CR : Crown

** Rating
A : Acceptable N : Not Inspected/Rated
M : Minimally Acceptable C : Corrected
U : Unacceptable A/W : Acceptable but Monitor & Maintain

+ Issue Type
Ma : Maintenance Deficiency
Ob : Design & System Obsolescence
En : Enforcement

**Flood Control Project Maintenance
Levee Inspections**

Levee Inspection Report By Mile - Spring 2021

Sutter Maintenance Yard Maintenance Area 0005

Waterway	Bank	Unit Miles	Inspection Start/End	Inspector
Unit No. 02 Butte Creek	Right	16.27	03/24/2021 03/24/2021	Makar Sokol

LM Start	11.77	Rating **	M	Issue No.	71
LM End	11.77	Issue Type +	Ma	Location *	LS
Category	Earthen Levee			GPS Latitude/Longitude	
				Start	End
Item	Animal Control			39.657115 °	39.657115 °
				-121.788703 °	-121.788703 °
DWR ID	DWR_MA0005_02_f_2018_71				
Comment Code					
A3 : No rodents visible, but rodent burrows visible; need to backfill and compact or grout burrows.					
Inspector Comment					

Photo 1 of 1 : SP_2021_MA0005_197_71_20210224_00017.jpg



View of the rodent holes along the landside slope.

* Location LS : Land Side N/A : Not Applicable WS : Water Side CR : Crown	** Rating A : Acceptable M : Minimally Acceptable U : Unacceptable	N : Not Inspected/Rated C : Corrected A/W : Acceptable but Monitor & Maintain	+ Issue Type Ma : Maintenance Deficiency Ob : Design & System Obsolescence En : Enforcement
--	--	---	---

**Flood Control Project Maintenance
Levee Inspections**

Levee Inspection Report By Mile - Spring 2021

Sutter Maintenance Yard Maintenance Area 0005

Waterway	Bank	Unit Miles	Inspection Start/End	Inspector
Unit No. 02 Butte Creek	Right	16.27	03/24/2021 03/24/2021	Makar Sokol

LM Start	12.80	Rating **	M	Issue No.	21	
LM End	12.80	Issue Type +	Ma	Location *		
Category	Supplemental			GPS Latitude/Longitude		
				Start	End	
Item	DWR UCIP LMA Responsibility			39.670982 °	39.670982 °	
				-121.783103 °	-121.783103 °	
DWR ID	1673					
Comment Code						
Inspector Comment						
FS_ID:58290 DS_ID:1673 EP_NO: N/A Repair Type: Non-Urgent Crossing Status: Found UCIP Comments: 05/23/2019 (O. Magana - DWR UCIP)05/18/2017 Abandoned- needs to be done properly. Pipe has been selected to be internally cleaned and inspected as part of the DMP project. (A. Freitag - DWR Sutter Yard)11/14/2016 Abandoned- needs a cover for standpipe. (A. Freitag - DWR Sutter Yard)05/11/2016 Abandoned crossing. Needs a cover fo the WS riser. (A. Freitag - DWR Sutter Yard)08/03/2015 Crossing appears abandoned. Only the slide gate inside riser on the WS shoulder could be found. Riser needs a cover made for it. (A. Freitag - DWR Sutter Yard)11/24/2014 Same as last inspection. (A. Freitag - DWR Sutter Yard)06/04/2014 Same as last inspection. (A. Freitag - DWR Sutter Yard)11/13/2013 Slide gate top and stem were repaired to make gate operational. (A. Freitag - DWR Sutter Yard)06/06/2013 New slidegate is planned to be installed during summer of 2013. (A. Freitag - DWR Sutter Yard)11/01/2012 Slide gate on WS shoulder bent and damaged (inoperable) Pipe appears abandoned. (W. Wylie - DWR UCIP) FIELD_STRUCT_DESC: *ABANDONED* 24-inch corrugated metal drainage pipe through the levee, 14 feet below the crown. Slide gate in a corrugated metal riser on the waterside (WS) slope. [Additional Reference(s): DWR Levee Log, 1990 (HLM 12.98). USACE Sacramento O&M Manual, Unit 516 - Upper Butte Creek - Part No. 2, April 1960, (Station 126+91)]. FS Date: 5/23/2019 5:20:00 PM						

Photo 1 of 3 : UCIP_SP_2021_58290_68465.jpg



Broken slide gate in CM riser on WS slope.

* Location LS : Land Side N/A : Not Applicable WS : Water Side CR : Crown	** Rating A : Acceptable M : Minimally Acceptable U : Unacceptable	N : Not Inspected/Rated C : Corrected A/W : Acceptable but Monitor & Maintain	+ Issue Type Ma : Maintenance Deficiency Ob : Design & System Obsolescence En : Enforcement
--	--	---	---

**Flood Control Project Maintenance
Levee Inspections**

Levee Inspection Report By Mile - Spring 2021

Sutter Maintenance Yard Maintenance Area 0005

Waterway	Bank	Unit Miles	Inspection Start/End	Inspector
Unit No. 02 Butte Creek	Right	16.27	03/24/2021 03/24/2021	Makar Sokol

LM Start	12.80	Rating **	M	Issue No.	21 (cont)
LM End	12.80	Issue Type +	Ma	Location *	
Category	Supplemental		GPS Latitude/Longitude		
			Start	End	
Item	DWR UCIP LMA Responsibility		39.670982 °	39.670982 °	
			-121.783103 °	-121.783103 °	
DWR ID	1673				

Photo 2 of 3 : UCIP_SP_2021_58290_68464.jpg



Abandoned headwall on LS toe.

LM Start	12.80	Rating **	M	Issue No.	21 (cont)
LM End	12.80	Issue Type +	Ma	Location *	

Photo 3 of 3 : UCIP_SP_2021_58290_68463.jpg



Broken slide gate in CM riser on WS slope.

LM Start	12.84	Rating **	M	Issue No.	9
LM End	12.84	Issue Type +	Ma	Location *	LS
Category	Earthen Levee			GPS Latitude/Longitude	
				Start	End
Item	Animal Control			39.671281 °	39.671281 °
				-121.782390 °	-121.782389 °
DWR ID	DWR_MA0005_02_s_2019_9				
Comment Code					
A3 : No rodents visible, but rodent burrows visible; need to backfill and compact or grout burrows.					
Inspector Comment					

Photo 1 of 1 : SP_2021_MA0005_197_9_20210224_00004.jpg



View of the animal burrows on the landside slope. Spring 2019.

* Location LS : Land Side N/A : Not Applicable WS : Water Side CR : Crown		** Rating A : Acceptable M : Minimally Acceptable U : Unacceptable N : Not Inspected/Rated C : Corrected A/W : Acceptable but Monitor & Maintain		+ Issue Type Ma : Maintenance Deficiency Ob : Design & System Obsolescence En : Enforcement	
---	--	--	--	--	--

**Flood Control Project Maintenance
Levee Inspections**

Levee Inspection Report By Mile - Spring 2021

Sutter Maintenance Yard Maintenance Area 0005

Waterway	Bank	Unit Miles	Inspection Start/End	Inspector
Unit No. 02 Butte Creek	Right	16.27	03/24/2021 03/24/2021	Makar Sokol

LM Start	13.02	Rating **	M	Issue No.	44
LM End	13.02	Issue Type +	En	Location *	LS
Category	Earthen Levee			GPS Latitude/Longitude	
				Start	End
Item	Encroachments			39.673685 °	39.673685 °
				-121.781313 °	-121.781313 °
DWR ID	DWR_MA0005_02_s_2016_44				
Comment Code					
FW : Firewood					
Inspector Comment					
Remove the firewood from the landside toe.					

No Photos

LM Start	13.04	Rating **	M	Issue No.	5
LM End	13.04	Issue Type +	En	Location *	LS
Category	Earthen Levee			GPS Latitude/Longitude	
				Start	End
Item	Encroachments			39.673956 °	39.673956 °
				-121.781278 °	-121.781278 °
DWR ID	DWR_MA0005_02_s_2012_5				
Comment Code					
EQ : Equipment					
Inspector Comment					
Remove the equipment from the landside toe.					

No Photos

LM Start	13.04	Rating **	M	Issue No.	51
LM End	13.04	Issue Type +	En	Location *	LS
Category	Earthen Levee			GPS Latitude/Longitude	
				Start	End
Item	Encroachments			39.674001 °	39.674001 °
				-121.781266 °	-121.781266 °
DWR ID	DWR_MA0005_02_s_2020_51				
Comment Code					
FW : Firewood					
Inspector Comment					

No Photos

* Location LS : Land Side N/A : Not Applicable WS : Water Side CR : Crown	** Rating A : Acceptable M : Minimally Acceptable U : Unacceptable	N : Not Inspected/Rated C : Corrected A/W : Acceptable but Monitor & Maintain	+ Issue Type Ma : Maintenance Deficiency Ob : Design & System Obsolescence En : Enforcement
--	--	---	---

**Flood Control Project Maintenance
Levee Inspections**

Levee Inspection Report By Mile - Spring 2021

Sutter Maintenance Yard Maintenance Area 0005

Waterway	Bank	Unit Miles	Inspection Start/End	Inspector
Unit No. 02 Butte Creek	Right	16.27	03/24/2021 03/24/2021	Makar Sokol

LM Start	13.07	Rating **	U	Issue No.	50
LM End	13.07	Issue Type +	En	Location *	LS
Category	Earthen Levee			GPS Latitude/Longitude	
				Start	End
Item	Encroachments			39.674321 °	39.674321 °
				-121.781163 °	-121.781163 °
DWR ID	DWR_MA0005_02_s_2020_50				
Comment Code					
FW : Firewood					
Inspector Comment					

Photo 1 of 1 : SP_2021_MA0005_197_50_20210407_00082.jpg



View of the pile of firewood at the landside toe. Spring 2021.

LM Start	13.15	Rating **	M	Issue No.	22	
LM End	13.15	Issue Type +	En	Location *		
Category	Supplemental			GPS Latitude/Longitude		
				Start	End	
Item	DWR UCIP Field Study			39.675379 °	39.675379 °	
				-121.780319 °	-121.780319 °	
DWR ID	1674					
Comment Code						
Inspector Comment						
FS_ID:58291 DS_ID:1674 EP_NO: 1291 Repair Type: Non-Urgent Crossing Status: Found UCIP Comments: 05/18/2017 Appears abandoned- needs to be done properly. (A. Freitag - DWR Sutter Yard)11/14/2016 Appears abandoned- needs to be done so properly. (A. Freitag - DWR Sutter Yard)05/11/2016 Appears to be an abandoned crossing. (A. Freitag - DWR Sutter Yard)08/03/2015 Pipe appears to be abandoned. Pump on WS berm is still missing. (A. Freitag - DWR Sutter Yard)11/24/2014 Same as last inspection. (A. Freitag - DWR Sutter Yard)06/04/2014 Same as last inspection. (A. Freitag - DWR Sutter Yard)11/13/2013 Same as last inspection. (A. Freitag - DWR Sutter Yard)06/06/2013 Same as last inspection. (A. Freitag - DWR Sutter Yard)11/01/2012 Pipe appears to be abandoned. No pump found. Pipe should be abandoned properly. (W. Wylie - DWR UCIP) FIELD_STRUCT_DESC: 24-inch corrugated metal (not 14-inch concrete as described in the permit) irrigation pipe through the levee, 9 feet below the crown. Slide gate in a 36-inch corrugated metal riser on the waterside (WS) slope. Pump and a 36-inch concrete standpipe on the WS. (14-inch pipe referenced under Permit No. 1291, 1948 - J. P. Hansen). [Additional Reference(s): DWR Levee Log, 1990 (HLM 13.35). USACE Sacramento O&M Manual, Unit 516 - Upper Butte Creek - Part No. 2, April 1960, (Station 106+93)]. FS Date: 6/1/2017 1:54:00 PM						

Photo 1 of 1 : UCIP_SP_2021_58291_68488.jpg



Slide gate in CM riser on WS toe.

* Location LS : Land Side N/A : Not Applicable WS : Water Side CR : Crown	** Rating A : Acceptable M : Minimally Acceptable U : Unacceptable	N : Not Inspected/Rated C : Corrected A/W : Acceptable but Monitor & Maintain	+ Issue Type Ma : Maintenance Deficiency Ob : Design & System Obsolescence En : Enforcement
--	--	---	---

**Flood Control Project Maintenance
Levee Inspections**

Levee Inspection Report By Mile - Spring 2021

Sutter Maintenance Yard Maintenance Area 0005

Waterway	Bank	Unit Miles	Inspection Start/End	Inspector
Unit No. 02 Butte Creek	Right	16.27	03/24/2021 03/24/2021	Makar Sokol

LM Start	13.31	Rating **	M	Issue No.	23
LM End	13.31	Issue Type +	En	Location *	
Category	Supplemental			GPS Latitude/Longitude	
				Start	End
Item	DWR UCIP Field Study			39.677309 °	39.677309 °
				-121.778668 °	-121.778668 °
DWR ID	1675				
Comment Code					
Inspector Comment					
FS_ID:58292 DS_ID:1675 EP_NO: N/A Repair Type: Non-Urgent Crossing Status: Found UCIP Comments: 05/18/2017 LS visible but nothing found on WS of levee. (A. Freitag - DWR Sutter Yard)11/14/2016 Still unable to locate and WS appurtances. (A. Freitag - DWR Sutter Yard)05/11/2016 LS seems fine but nothing was found on the WS. (A. Freitag - DWR Sutter Yard)08/03/2015 Still unable to locate anything on the WS. (A. Freitag - DWR Sutter Yard)11/24/2014 Same as last inspection. (A. Freitag - DWR Sutter Yard)06/04/2014 Same as last inspection. (A. Freitag - DWR Sutter Yard)11/13/2013 Same as last inspection. (A. Freitag - DWR Sutter Yard)06/06/2013 Same as last inspection. (A. Freitag - DWR Sutter Yard)11/01/2012 Unable to locate pipe on WS. (A. Freitag - DWR Sutter Yard) FIELD_STRUCT_DESC: 8-inch steel irrigation pipe, 4 feet below the crown. Pipe is sleeved with a 5-inch aluminum irrigation pipe. Pump on a concrete pad on the landside (LS) slope. Butterfly valve on the LS slope. [Additional Reference(s): DWR Levee Log, 1990]. FS Date: 6/1/2017 1:56:00 PM					

Photo 1 of 1 : UCIP_SP_2021_58292_68489.jpg



Enter photo 1 description or comment here.

LM Start	13.37	Rating **	M	Issue No.	40
LM End	13.37	Issue Type +	Ma	Location *	WS
Category	Earthen Levee			GPS Latitude/Longitude	
				Start	End
Item	Slope Stability			39.678164 °	39.678164 °
				-121.778344 °	-121.778344 °
DWR ID	DWR_MA0005_02_f _ 2020_40				
Comment Code					
S3 : Repair the levee slope damaged by vehicle traffic and prevent access where possible.					
Inspector Comment					

No Photos

* Location LS : Land Side N/A : Not Applicable WS : Water Side CR : Crown	** Rating A : Acceptable M : Minimally Acceptable U : Unacceptable	N : Not Inspected/Rated C : Corrected A/W : Acceptable but Monitor & Maintain	+ Issue Type Ma : Maintenance Deficiency Ob : Design & System Obsolescence En : Enforcement
---	--	---	---

**Flood Control Project Maintenance
Levee Inspections**

Levee Inspection Report By Mile - Spring 2021

Sutter Maintenance Yard Maintenance Area 0005

Waterway	Bank	Unit Miles	Inspection Start/End	Inspector
Unit No. 02 Butte Creek	Right	16.27	03/24/2021 03/24/2021	Makar Sokol

LM Start	13.40	Rating **	A/W	Issue No.	24
LM End	13.40	Issue Type +	Ma	Location *	
Category	Supplemental			GPS Latitude/Longitude	
				Start	End
Item	DWR UCIP LMA Responsibility			39.678550 °	39.678550 °
				-121.778339 °	-121.778339 °
DWR ID	1679				

Comment Code

Inspector Comment

FS_ID:58301
DS_ID:1679
EP_NO: N/A
Repair Type: No Action Needed
Crossing Status: Found
UCIP Comments: 05/18/2017 Crossing appears to be in good condition. Pipe has been selected to be internally cleaned and inspected as part of the DMP project. (A. Freitag - DWR Sutter Yard)11/14/2016 Crossing appears to be in good condition. (A. Freitag - DWR Sutter Yard)05/11/2016 Crossing appears to be in good condition. (A. Freitag - DWR Sutter Yard)08/03/2015 Crossing appears in good condition. No noticeable issues to report. (A. Freitag - DWR Sutter Yard)11/25/2014 Same as last inspection. (A. Freitag - DWR Sutter Yard)06/04/2014 Same as last inspection. (A. Freitag - DWR Sutter Yard)11/13/2013 Same as last inspection. (A. Freitag - DWR Sutter Yard)06/06/2013 Same as last inspection. (A. Freitag - DWR Sutter Yard)
FIELD_STRUCT_DESC: 24-inch corrugated metal drainage pipe through the levee, 14.5 feet below the crown. Concrete "U" shaped headwall on the waterside (WS). Flap gate on the WS. [Additional Reference(s): DWR Levee Log, 1990 (HLM 13.61). USACE Sacramento O&M Manual, Unit 516 - Upper Butte Creek - Part No. 2, April 1960, (Station 93+78)].
FS Date: 6/1/2017 2:09:00 PM

LM Start	13.40	Rating **	A/W	Issue No.	24 (cont)
LM End	13.40	Issue Type +	Ma	Location *	

Photo 1 of 3 : UCIP_SP_2021_58301_68531.jpg



Inlet relocated after bridge replacement away from LS toe.

Photo 2 of 3 : UCIP_SP_2021_58301_68530.jpg



Inlet 50-feet NW of levee crown.

* Location LS : Land Side N/A : Not Applicable WS : Water Side CR : Crown	** Rating A : Acceptable M : Minimally Acceptable U : Unacceptable	N : Not Inspected/Rated C : Corrected A/W : Acceptable but Monitor & Maintain	+ Issue Type Ma : Maintenance Deficiency Ob : Design & System Obsolescence En : Enforcement
--	--	--	---

**Flood Control Project Maintenance
Levee Inspections**

Levee Inspection Report By Mile - Spring 2021

Sutter Maintenance Yard Maintenance Area 0005

Waterway	Bank	Unit Miles	Inspection Start/End	Inspector
Unit No. 02 Butte Creek	Right	16.27	03/24/2021 03/24/2021	Makar Sokol

LM Start	13.40	Rating **	A/W	Issue No.	24 (cont)
LM End	13.40	Issue Type +	Ma	Location *	
Category	Supplemental			GPS Latitude/Longitude	
				Start	End
Item	DWR UCIP LMA Responsibility			39.678550 °	39.678550 °
				-121.778339 °	-121.778339 °
DWR ID	1679				

Photo 3 of 3 : UCIP_SP_2021_58301_68533.jpg



Concrete U-shaped headwall and flap gate at WS slope.

LM Start	13.76	Rating **	A/W	Issue No.	20
LM End	13.95	Issue Type +	Ob	Location *	WS
Category	Earthen Levee			GPS Latitude/Longitude	
				Start	End
Item	Vegetation			39.683630 °	39.686221 °
				-121.777916 °	-121.779051 °
DWR ID	DWR_MA0005_02_s_2012_20				
Comment Code					
V8 : Environmental Requirements.					
Inspector Comment					

No Photos

*** Location**
LS : Land Side N/A : Not Applicable
WS : Water Side
CR : Crown

**** Rating**
A : Acceptable N : Not Inspected/Rated
M : Minimally Acceptable C : Corrected
U : Unacceptable A/W : Acceptable but Monitor & Maintain

+ Issue Type
Ma : Maintenance Deficiency
Ob : Design & System Obsolescence
En : Enforcement

**Flood Control Project Maintenance
Levee Inspections**

Levee Inspection Report By Mile - Spring 2021

Sutter Maintenance Yard Maintenance Area 0005

Waterway	Bank	Unit Miles	Inspection Start/End	Inspector
Unit No. 02 Butte Creek	Right	16.27	03/24/2021 03/24/2021	Makar Sokol

LM Start	13.78	Rating **	M	Issue No.	27
LM End	13.78	Issue Type +	En	Location *	
Category	Supplemental			GPS Latitude/Longitude	
				Start	End
Item	DWR UCIP Field Study			39.683896 °	39.683896 °
				-121.778183 °	-121.778183 °
DWR ID	1680				
Comment Code					
Inspector Comment					
FS_ID:58302 DS_ID:1680 EP_NO: N/A Repair Type: Non-Urgent Crossing Status: Found UCIP Comments: 05/18/2017 Unable to locate. (A. Freitag - DWR Sutter Yard)11/14/2016 Unable to locate. (A. Freitag - DWR Sutter Yard)05/11/2016 Unable to locate. (A. Freitag - DWR Sutter Yard)08/03/2015 Unable to locate. (A. Freitag - DWR Sutter Yard)11/25/2014 Unable to locate. (A. Freitag - DWR Sutter Yard)06/04/2014 Same as last inspection. Unable to locate. (A. Freitag - DWR Sutter Yard)11/13/2013 Unable to locate. (A. Freitag - DWR Sutter Yard)06/06/2013 Boiler has been removed and pipe buried on LS. Unable to locate. (A. Freitag - DWR Sutter Yard)11/01/2012 Pipe appears to be abandoned. (W. Wylie - DWR UCIP) FIELD_STRUCT_DESC: 8-inch steel irrigation pipe through the levee, 6.5 feet below the crown. Boiler attached to the landside (LS). [Additional Reference(s): DWR Levee Log, 1990 (HLM 13.99). USACE Sacramento O&M Manual, Unit 516 - Upper Butte Creek - Part No. 2, April 1960, (Station 73+27)]. FS Date: 6/1/2017 2:11:00 PM					

Photo 1 of 1 : UCIP_SP_2021_58302_68534.jpg



Pipe attached at boiler on LS toe.

* Location LS : Land Side N/A : Not Applicable WS : Water Side CR : Crown	** Rating A : Acceptable M : Minimally Acceptable U : Unacceptable	N : Not Inspected/Rated C : Corrected A/W : Acceptable but Monitor & Maintain	+ Issue Type Ma : Maintenance Deficiency Ob : Design & System Obsolescence En : Enforcement
--	--	---	---

**Flood Control Project Maintenance
Levee Inspections**

Levee Inspection Report By Mile - Spring 2021

Sutter Maintenance Yard Maintenance Area 0005

Waterway	Bank	Unit Miles	Inspection Start/End	Inspector
Unit No. 02 Butte Creek	Right	16.27	03/24/2021 03/24/2021	Makar Sokol

LM Start	13.94	Rating **	M	Issue No.	28	
LM End	13.94	Issue Type +	En	Location *		
Category	Supplemental			GPS Latitude/Longitude		
				Start	End	
Item	DWR UCIP Field Study			39.685961 °	39.685961 °	
				-121.779041 °	-121.779041 °	
DWR ID	1681					
Comment Code						
Inspector Comment						
FS_ID:58303 DS_ID:1681 EP_NO: N/A Repair Type: Non-Urgent Crossing Status: Found UCIP Comments: 05/18/2017 Appears abandoned- if so needs to be done so properly. (A. Freitag - DWR Sutter Yard)11/14/2016 Appears abandoned. (A. Freitag - DWR Sutter Yard)05/11/2016 Abandoned crossing. (A. Freitag - DWR Sutter Yard)08/03/2015 Pipe still appears abandoned. (A. Freitag - DWR Sutter Yard)11/25/2014 Same as last inspection. (A. Freitag - DWR Sutter Yard)06/04/2014 Same as last inspection. (A. Freitag - DWR Sutter Yard)11/13/2013 Same as last inspection. (A. Freitag - DWR Sutter Yard)06/06/2013 Same as last inspection. (A. Freitag - DWR Sutter Yard)11/01/2012 Pipe appears to be abandoned. (W. Wylie - DWR UCIP) FIELD_STRUCT_DESC: *ABANDONED* 6-inch steel irrigation pipe through the levee, 7.1 feet below the crown. Siphon breaker in a corrugated metal riser on the landside (LS) slope. One corrugated metal cutoff wall. Pipe is open on both ends. [Additional Reference(s): DWR Levee Log, 1990 (HLM 14.15). USACE Sacramento O&M Manual, Unit 516 - Upper Butte Creek - Part No. 2, April 1960, (Station 65+52)]. FS Date: 6/1/2017 2:12:00 PM						

Photo 1 of 1 : UCIP_SP_2021_58303_68535.jpg



CM riser with siphon breaker on LS shoulder.

LM Start	14.33	Rating **	U	Issue No.	25
LM End	14.33	Issue Type +	En	Location *	LS
Category	Earthen Levee			GPS Latitude/Longitude	
				Start	End
Item	Encroachments			39.691580 °	39.691580 °
				-121.779254 °	-121.779254 °
DWR ID	DWR_MA0005_02_s_2012_25				
Comment Code					
BU : Building					
Inspector Comment					
Unpermitted structure.					

Photo 1 of 1 : SP_2021_MA0005_197_25_20210407_00084.jpg



View of the buildings at the landside toe. Spring 2021.

* Location
 LS : Land Side N/A : Not Applicable
 WS : Water Side
 CR : Crown

** Rating
 A : Acceptable N : Not Inspected/Rated
 M : Minimally Acceptable C : Corrected
 U : Unacceptable A/W : Acceptable but Monitor & Maintain

+ Issue Type
 Ma : Maintenance Deficiency
 Ob : Design & System Obsolescence
 En : Enforcement

**Flood Control Project Maintenance
Levee Inspections**

Levee Inspection Report By Mile - Spring 2021

Sutter Maintenance Yard Maintenance Area 0005

Waterway	Bank	Unit Miles	Inspection Start/End	Inspector
Unit No. 02 Butte Creek	Right	16.27	03/24/2021 03/24/2021	Makar Sokol

LM Start	14.46	Rating **	A/W	Issue No.	29
LM End	14.46	Issue Type +	Ma	Location *	
Category	Supplemental			GPS Latitude/Longitude	
				Start	End
Item	DWR UCIP LMA Responsibility			39.693331 °	39.693331 °
				-121.779556 °	-121.779556 °
DWR ID	1682				

Comment Code

Inspector Comment

FS_ID:58304
DS_ID:1682
EP_NO: N/A
Repair Type: No Action Needed
Crossing Status: Found
UCIP Comments: 05/23/2019 (O. Magana - DWR UCIP)05/18/2017 Crossing appears to be in good condition. Pipe has been selected to be internally cleaned and inspected as part of the DMP project. (A. Freitag - DWR Sutter Yard)11/14/2016 Crossing appears to be in good condition. (A. Freitag - DWR Sutter Yard)05/11/2016 Crossing appears to be in good condition. (A. Freitag - DWR Sutter Yard)08/03/2015 Crossing appears in good condition. No noticeable issues to report. (A. Freitag - DWR Sutter Yard)11/25/2014 Same as last inspection. (A. Freitag - DWR Sutter Yard)06/04/2014 Same as last inspection. (A. Freitag - DWR Sutter Yard)11/13/2013 Same as last inspection. (A. Freitag - DWR Sutter Yard)06/06/2013 Same as last inspection. (A. Freitag - DWR Sutter Yard)
FIELD_STRUCT_DESC: 24-inch corrugated metal drainage pipe through the levee, 7.2 feet below the crown. Concrete "U" shaped headwall and grouted spillway on the waterside (WS). Slide gate in a 48-inch concrete standpipe on the landside (LS). Flap gate on the WS.
[Additional Reference(s): DWR Levee Log, 1990 (HLM 14.68). USACE Sacramento O&M Manual, Unit 516 - Upper Butte Creek - Part No. 2, April 1960, (Station 37+10)].
FS Date: 5/23/2019 5:21:00 PM

LM Start	14.46	Rating **	A/W	Issue No.	29 (cont)
LM End	14.46	Issue Type +	Ma	Location *	

Photo 1 of 3 : UCIP_SP_2021_58304_68544.jpg



Outlet at U-shaped headwall on WS toe.

Photo 2 of 3 : UCIP_SP_2021_58304_68543.jpg



Concrete lined channel on LS toe.

* Location LS : Land Side N/A : Not Applicable WS : Water Side CR : Crown	** Rating A : Acceptable M : Minimally Acceptable U : Unacceptable	N : Not Inspected/Rated C : Corrected A/W : Acceptable but Monitor & Maintain	+ Issue Type Ma : Maintenance Deficiency Ob : Design & System Obsolescence En : Enforcement
--	--	--	---

**Flood Control Project Maintenance
Levee Inspections**

Levee Inspection Report By Mile - Spring 2021

Sutter Maintenance Yard Maintenance Area 0005

Waterway	Bank	Unit Miles	Inspection Start/End	Inspector
Unit No. 02 Butte Creek	Right	16.27	03/24/2021 03/24/2021	Makar Sokol

LM Start	14.46	Rating **	A/W	Issue No.	29 (cont)
LM End	14.46	Issue Type +	Ma	Location *	
Category	Supplemental		GPS Latitude/Longitude		
			Start	End	
Item	DWR UCIP LMA Responsibility		39.693331 °	39.693331 °	
			-121.779556 °	-121.779556 °	
DWR ID	1682				

Photo 3 of 3 : UCIP_SP_2021_58304_68542.jpg



Concrete standpipe and slide gate on LS toe.

LM Start	14.47	Rating **	M	Issue No.	30
LM End	14.47	Issue Type +	Ma	Location *	
Category	Supplemental		GPS Latitude/Longitude		
			Start	End	
Item	DWR UCIP LMA Responsibility		39.693406 °	39.693406 °	
			-121.779583 °	-121.779583 °	
DWR ID	1683				

Comment Code

Inspector Comment

FS_ID:58312
DS_ID:1683
EP_NO: N/A
Repair Type: Non-Urgent
Crossing Status: Found
UCIP Comments: 05/18/2017 WS appears to be in good condition. LS inlet is across a ditch and inaccessible for inspection due to dense vegetation and being down a very steep slope. Pipe has been selected to be internally cleaned and inspected as part of the DMP project. (A. Freitag - DWR Sutter Yard)11/14/2016 Crossing appears to be in good condition. (A. Freitag - DWR Sutter Yard)05/11/2016 Crossing appears to be in good condition. (A. Freitag - DWR Sutter Yard)08/03/2015 Crossing appears in good condition. No noticeable issues to report. (A. Freitag - DWR Sutter Yard)11/25/2014 Same as last inspection. (A. Freitag - DWR Sutter Yard)06/04/2014 Same as last inspection. (A. Freitag - DWR Sutter Yard)11/13/2013 Same as last inspection. (A. Freitag - DWR Sutter Yard)06/06/2013 Same as last inspection. (A. Freitag - DWR Sutter Yard)
FIELD_STRUCT_DESC: 24-inch corrugated metal drainage pipe through the levee, 14.3 feet below the crown. Concrete "U" headwalls on both the landside (LS) and the waterside (WS). Flap gate on the WS. Inlet downhill from a concrete lined channel at the low point on the LS toe. [Additional Reference(s): DWR Levee Log, 1990 (HLM 14.69). USACE Sacramento O&M Manual, Unit 516 - Upper Butte Creek - Part No. 2, April 1960, (Station 36+85)].
FS Date: 6/1/2017 2:14:00 PM

Photo 1 of 2 : UCIP_SP_2021_58312_68541.jpg



Inlet at LS toe.

* Location LS : Land Side N/A : Not Applicable WS : Water Side CR : Crown	** Rating A : Acceptable M : Minimally Acceptable U : Unacceptable	N : Not Inspected/Rated C : Corrected A/W : Acceptable but Monitor & Maintain	+ Issue Type Ma : Maintenance Deficiency Ob : Design & System Obsolescence En : Enforcement
--	--	--	---

**Flood Control Project Maintenance
Levee Inspections**

Levee Inspection Report By Mile - Spring 2021

Sutter Maintenance Yard Maintenance Area 0005

Waterway	Bank	Unit Miles	Inspection Start/End	Inspector
Unit No. 02 Butte Creek	Right	16.27	03/24/2021 03/24/2021	Makar Sokol

LM Start	14.47	Rating **	M	Issue No.	30 (cont)
LM End	14.47	Issue Type +	Ma	Location *	
Category	Supplemental		GPS Latitude/Longitude		
			Start	End	
Item	DWR UCIP LMA Responsibility		39.693406 °	39.693406 °	
			-121.779583 °	-121.779583 °	
DWR ID	1683				

Photo 2 of 2 : UCIP_SP_2021_58312_68540.jpg



Outlet at WS toe with flap gate and concrete U-shaped headwall.

LM Start	15.00	Rating **	M	Issue No.	31
LM End	15.00	Issue Type +	En	Location *	
Category	Supplemental		GPS Latitude/Longitude		
			Start	End	
Item	DWR UCIP Field Study		39.700903 °	39.700903 °	
			-121.779039 °	-121.779039 °	
DWR ID	1685				

Comment Code

Inspector Comment

FS_ID:58308
DS_ID:1685
EP_NO: N/A
Repair Type: Non-Urgent
Crossing Status: Found
UCIP Comments: 05/18/2017 Crossing appears to be in good condition. WS riser needs a cover. (A. Freitag - DWR Sutter Yard)11/14/2016 Good condition- needs a cover for the riser. (A. Freitag - DWR Sutter Yard)05/11/2016 Needs a cover for riser. The rest of the crossing appears to be in good condition. (A. Freitag - DWR Sutter Yard)08/03/2015 Crossing appears in good condition but needs a cover made for the riser. (A. Freitag - DWR Sutter Yard)11/25/2014 Same as last inspection. (A. Freitag - DWR Sutter Yard)06/04/2014 Same as last inspection. (A. Freitag - DWR Sutter Yard)11/13/2013 Same as last inspection. (A. Freitag - DWR Sutter Yard)06/06/2013 Same as last inspection. (A. Freitag - DWR Sutter Yard)
FIELD_STRUCT_DESC: 42-inch steel irrigation pipe (siphon) through the levee, 10 feet below the crown. Slide gate in a 54-inch corrugated metal riser on the waterside (WS) slope. 5-foot by 8-foot concrete distribution box on the landside (LS). Two corrugated metal cutoff walls installed within the levee. [Additional Reference(s): DWR Levee Log, 1990 (HLM 15.22). USACE Sacramento O&M Manual, Unit 516 - Upper Butte Creek - Part No. 2, April 1960, (Station 8+30)].
FS Date: 6/1/2017 2:21:00 PM

Photo 1 of 2 : UCIP_SP_2021_58308_68570.jpg



Concrete distribution box with slide gate on LS toe.

* Location LS : Land Side N/A : Not Applicable WS : Water Side CR : Crown		** Rating A : Acceptable N : Not Inspected/Rated M : Minimally Acceptable C : Corrected U : Unacceptable A/W : Acceptable but Monitor & Maintain		+ Issue Type Ma : Maintenance Deficiency Ob : Design & System Obsolescence En : Enforcement
--	--	---	--	---

**Flood Control Project Maintenance
Levee Inspections**

Levee Inspection Report By Mile - Spring 2021

Sutter Maintenance Yard Maintenance Area 0005

Waterway	Bank	Unit Miles	Inspection Start/End	Inspector
Unit No. 02 Butte Creek	Right	16.27	03/24/2021 03/24/2021	Makar Sokol

LM Start	15.00	Rating **	M	Issue No.	31 (cont)
LM End	15.00	Issue Type +	En	Location *	
Category	Supplemental		GPS Latitude/Longitude		
			Start	End	
Item	DWR UCIP Field Study		39.700903 °	39.700903 °	
			-121.779039 °	-121.779039 °	
DWR ID	1685				

Photo 2 of 2 : UCIP_SP_2021_58308_68569.jpg



CMP riser on WS shoulder with slide gate.

LM Start	15.26	Rating **	M	Issue No.	32
LM End	15.26	Issue Type +	En	Location *	
Category	Supplemental		GPS Latitude/Longitude		
			Start	End	
Item	DWR UCIP Field Study		39.704409 °	39.704409 °	
			-121.777803 °	-121.777803 °	
DWR ID	1686				

Comment Code

Inspector Comment

FS_ID:58309
DS_ID:1686
EP_NO: N/A
Repair Type: Non-Urgent
Crossing Status: Found
UCIP Comments: 05/18/2017 Only WS and LS standpipes visible. (A. Freitag - DWR Sutter Yard)11/14/2016 Still only WS standpipe visible. (A. Freitag - DWR Sutter Yard)05/11/2016 Only WS standpipe was visible. (A. Freitag - DWR Sutter Yard)08/03/2015 Only able to locate the standpipe on the WS. (A. Freitag - DWR Sutter Yard)11/25/2014 Same as last inspection. (A. Freitag - DWR Sutter Yard)06/04/2014 Same as last inspection. (A. Freitag - DWR Sutter Yard)11/13/2013 Same as last inspection. (A. Freitag - DWR Sutter Yard)06/06/2013 Same as last inspection. (A. Freitag - DWR Sutter Yard)
FIELD_STRUCT_DESC: 12-inch steel irrigation pipe (siphon) through the levee, 10 feet below the crown. Slide gate in a 36-inch corrugated metal riser on the waterside (WS) slope. 30-inch concrete standpipe at the landside (LS) toe. [Additional Reference(s): DWR Levee Log, 1990 (HLM 15.48). USACE Sacramento O&M Manual, Unit 516 - Upper Butte Creek - Part No. 2, April 1960, (Station 145+53)].
FS Date: 6/1/2017 2:22:00 PM

Photo 1 of 2 : UCIP_SP_2021_58309_68572.jpg



CMP riser on WS slope with slide gate.

* Location LS : Land Side N/A : Not Applicable WS : Water Side CR : Crown	** Rating A : Acceptable M : Minimally Acceptable U : Unacceptable	N : Not Inspected/Rated C : Corrected A/W : Acceptable but Monitor & Maintain	+ Issue Type Ma : Maintenance Deficiency Ob : Design & System Obsolescence En : Enforcement
--	--	--	---

**Flood Control Project Maintenance
Levee Inspections**

Levee Inspection Report By Mile - Spring 2021

Sutter Maintenance Yard Maintenance Area 0005

Waterway	Bank	Unit Miles	Inspection Start/End	Inspector
Unit No. 02 Butte Creek	Right	16.27	03/24/2021 03/24/2021	Makar Sokol

LM Start	15.26	Rating **	M	Issue No.	32 (cont)
LM End	15.26	Issue Type +	En	Location *	
Category	Supplemental		GPS Latitude/Longitude		
			Start	End	
Item	DWR UCIP Field Study		39.704409 °	39.704409 °	
			-121.777803 °	-121.777803 °	
DWR ID	1686				

Photo 2 of 2 : UCIP_SP_2021_58309_68571.jpg



Concrete riser on LS toe.

LM Start	15.47	Rating **	M	Issue No.	33
LM End	15.47	Issue Type +	En	Location *	
Category	Supplemental		GPS Latitude/Longitude		
			Start	End	
Item	DWR UCIP Field Study		39.707544 °	39.707544 °	
			-121.777701 °	-121.777701 °	
DWR ID	1687				

Comment Code

Inspector Comment

FS_ID:58310
DS_ID:1687
EP_NO: N/A
Repair Type: Non-Urgent
Crossing Status: Found
UCIP Comments: 05/18/2017 Crossing appears to be in good condition. WS riser needs a cover. (A. Freitag - DWR Sutter Yard)11/14/2016 Good condition- needs a cover for standpipe. (A. Freitag - DWR Sutter Yard)05/11/2016 Needs a lcover for riser. The rest of the crossing appears in good condition. (A. Freitag - DWR Sutter Yard)08/03/2015 Crossing is in good condition but needs a cover made for the riser. (A. Freitag - DWR Sutter Yard)11/25/2014 Same as last inspection. (A. Freitag - DWR Sutter Yard)06/04/2014 Same as last inspection. (A. Freitag - DWR Sutter Yard)11/13/2013 Same as last inspection. (A. Freitag - DWR Sutter Yard)06/06/2013 Same as last inspection. Need to construct covers for top of standpipe. (A. Freitag - DWR Sutter Yard)11/02/2012 Good candidate for video inspection. (W. Wylie - DWR UCIP)
FIELD_STRUCT_DESC: 1 of 2: 54-inch corrugated metal irrigation pipe (siphon) through the levee, 17.8 feet below the crown. Slide gate in a 66-inch corrugated metal riser on the waterside (WS). Concrete headwall and irrigation ditch at the landside (LS) toe. Edgar Slough riser units in the floodway. [Additional Reference(s): DWR Levee Log, 1990 (HLM 15.71). USACE Sacramento O&M Manual, Unit 516 - Upper Butte Creek - Part No. 2, April 1960, (Station 132+00)].
FS Date: 6/1/2017 2:23:00 PM

Photo 1 of 3 : UCIP_SP_2021_58310_68575.jpg



66-inch CMP riser on WS shoulder with slide gate.

* Location LS : Land Side N/A : Not Applicable WS : Water Side CR : Crown	** Rating A : Acceptable M : Minimally Acceptable U : Unacceptable	N : Not Inspected/Rated C : Corrected A/W : Acceptable but Monitor & Maintain	+ Issue Type Ma : Maintenance Deficiency Ob : Design & System Obsolescence En : Enforcement
--	--	--	---

**Flood Control Project Maintenance
Levee Inspections**

Levee Inspection Report By Mile - Spring 2021

Sutter Maintenance Yard Maintenance Area 0005

Waterway	Bank	Unit Miles	Inspection Start/End	Inspector
Unit No. 02 Butte Creek	Right	16.27	03/24/2021 03/24/2021	Makar Sokol

LM Start	15.47	Rating **	M	Issue No.	33 (cont)
LM End	15.47	Issue Type +	En	Location *	
Category	Supplemental		GPS Latitude/Longitude		
			Start	End	
Item	DWR UCIP Field Study		39.707544 °	39.707544 °	
			-121.777701 °	-121.777701 °	
DWR ID	1687				

Photo 2 of 3 : UCIP_SP_2021_58310_68574.jpg



Irrigation ditch at LS toe.

LM Start	15.47	Rating **	M	Issue No.	33 (cont)
LM End	15.47	Issue Type +	En	Location *	

Photo 3 of 3 : UCIP_SP_2021_58310_68573.jpg



Concrete headwall on LS toe.

* Location LS : Land Side N/A : Not Applicable WS : Water Side CR : Crown	** Rating A : Acceptable M : Minimally Acceptable U : Unacceptable	N : Not Inspected/Rated C : Corrected A/W : Acceptable but Monitor & Maintain	+ Issue Type Ma : Maintenance Deficiency Ob : Design & System Obsolescence En : Enforcement
--	--	---	---

**Flood Control Project Maintenance
Levee Inspections**

Levee Inspection Report By Mile - Spring 2021

Sutter Maintenance Yard Maintenance Area 0005

Waterway	Bank	Unit Miles	Inspection Start/End	Inspector
Unit No. 02 Butte Creek	Right	16.27	03/24/2021 03/24/2021	Makar Sokol

LM Start	15.48	Rating **	M	Issue No.	36
LM End	15.48	Issue Type +	En	Location *	
Category	Supplemental			GPS Latitude/Longitude	
				Start	End
Item	DWR UCIP Field Study			39.707569 °	39.707569 °
				-121.777705 °	-121.777705 °
DWR ID	16316				

Comment Code

Inspector Comment

FS_ID:58311
DS_ID:16316
EP_NO: N/A
Repair Type: Non-Urgent
Crossing Status: Found
UCIP Comments: 05/18/2017 Crossing appears to be in good condition. WS riser needs a cover. (A. Freitag - DWR Sutter Yard)11/14/2016 Good condition- needs a cover for standpipe. (A. Freitag - DWR Sutter Yard)05/11/2016 Needs a lcover for riser. The rest of the crossing appears in good condition. (A. Freitag - DWR Sutter Yard)08/03/2015 Crossing appears in good condition but needs a cover made for the riser. (A. Freitag - DWR Sutter Yard)11/25/2014 Same as last inspection. (A. Freitag - DWR Sutter Yard)06/04/2014 Same as last inspection. (A. Freitag - DWR Sutter Yard)11/13/2013 Same as last inspection. (A. Freitag - DWR Sutter Yard)06/06/2013 Same as last inspection. Need to construct cover for top of standpipe. (A. Freitag - DWR Sutter Yard)11/01/2012 Good candidate for video inspection. (W. Wylie - DWR UCIP)
FIELD_STRUCT_DESC: 2 of 2: 54-inch corrugated metal irrigation pipe (siphon) through the levee, 17.8 feet below the crown. Slide gate in a 66-inch corrugated metal riser on the waterside (WS). Concrete headwall and irrigation ditch at the landside (LS) toe. Edgar Slough riser units in the floodway. [Additional Reference(s): DWR Levee Log, 1990 (HLM 15.71). USACE Sacramento O&M Manual, Unit 516 - Upper Butte Creek - Part No. 2, April 1960, (Station 132+00)].
FS Date: 6/1/2017 2:24:00 PM

LM Start	15.48	Rating **	M	Issue No.	36 (cont)
LM End	15.48	Issue Type +	En	Location *	

Photo 1 of 3 : UCIP_SP_2021_58311_68579.jpg



Concrete headwall at LS toe.

Photo 2 of 3 : UCIP_SP_2021_58311_68578.jpg



Related structure out in floodway.

* Location LS : Land Side N/A : Not Applicable WS : Water Side CR : Crown	** Rating A : Acceptable M : Minimally Acceptable U : Unacceptable	N : Not Inspected/Rated C : Corrected A/W : Acceptable but Monitor & Maintain	+ Issue Type Ma : Maintenance Deficiency Ob : Design & System Obsolescence En : Enforcement
--	--	--	---

**Flood Control Project Maintenance
Levee Inspections**

Levee Inspection Report By Mile - Spring 2021

Sutter Maintenance Yard Maintenance Area 0005

Waterway	Bank	Unit Miles	Inspection Start/End	Inspector
Unit No. 02 Butte Creek	Right	16.27	03/24/2021 03/24/2021	Makar Sokol

LM Start	15.48	Rating **	M	Issue No.	36 (cont)
LM End	15.48	Issue Type +	En	Location *	
Category	Supplemental			GPS Latitude/Longitude	
				Start	End
Item	DWR UCIP Field Study			39.707569 °	39.707569 °
				-121.777705 °	-121.777705 °
DWR ID	16316				

Photo 3 of 3 : UCIP_SP_2021_58311_68577.jpg



66-inch CMP riser on WS shoulder.

* Location LS : Land Side N/A : Not Applicable WS : Water Side CR : Crown	** Rating A : Acceptable M : Minimally Acceptable U : Unacceptable N : Not Inspected/Rated C : Corrected A/W : Acceptable but Monitor & Maintain	+ Issue Type Ma : Maintenance Deficiency Ob : Design & System Obsolescence En : Enforcement
--	---	---

**Flood Control Project Maintenance
Levee Inspections
Unit Cover Sheet**

Sutter Maintenance Yard Maintenance Area 0005

Waterway			Bank	Unit Miles
Unit No. 03 Little Chico Creek Diversion			Left	1.49
	Spring (March - May)	Summer (June - August)	(September - November) Fall	Winter (December - February)
Unit Maintenance Rating (Fall Only)				
Date of Inspection	3/24/2021 - 3/24/2021			
DWR Inspector	Makar Sokol			
Accompanied By	Bob Duffey DWR Sutter Yard			

Summer & Winter Inspections

The Local Maintaining Agency (LMA) is responsible for summer and winter inspections. The LMA is required to submit a report regarding summer and winter inspections to the California Department of Water Resources (DWR).

DWR must be informed on the:

- a) completion of the inspection
- b) any changes other than the results of normal maintenance
- c) corrections to deficiencies noted in this report

If additional items are noted, further documentation of those items must also be submitted.

The LMA should submit this information to DWR using the LMA web application tool available at:

<http://cdec.water.ca.gov/lma.html>

If the LMA is unable to submit information on this webpage, please contact DWR for assistance.

The LMA should submit the information and any associated documentation by September 30 for summer inspections and March 31 for winter inspections.

**Flood Control Project Maintenance
Levee Inspections**

Levee Inspection Report By Mile - Spring 2021

Sutter Maintenance Yard Maintenance Area 0005

Waterway	Bank	Unit Miles	Inspection Start/End	Inspector
Unit No. 03 Little Chico Creek Diversion	Left	1.49	03/24/2021 03/24/2021	Makar Sokol

LM Start	0.62	Rating **	M	Issue No.	2
LM End	0.62	Issue Type +	Ma	Location *	WS
Category	Earthen Levee			GPS Latitude/Longitude	
				Start	End
Item	Encroachments			39.725185 °	39.725185 °
				-121.781575 °	-121.781575 °
DWR ID	DWR_MA0005_03_s_2021_2				
Comment Code					
TR : Tree or limb					
Inspector Comment					

Photo 1 of 1 : SP_2021_MA0005_198_2_20210407_00002.jpg



View of the tree limb on the waterside slope. Spring 2021.

* Location LS : Land Side N/A : Not Applicable WS : Water Side CR : Crown	** Rating A : Acceptable M : Minimally Acceptable U : Unacceptable	N : Not Inspected/Rated C : Corrected A/W : Acceptable but Monitor & Maintain	+ Issue Type Ma : Maintenance Deficiency Ob : Design & System Obsolescence En : Enforcement
--	--	---	---