

**Flood Control Project Maintenance
Levee Inspections****LMA District Cover Sheet****Spring 2016 Levee Inspection Results****Sutter Maintenance Yard Maintenance Area 0005**

	Spring (March - May)	Summer ** (June - August)	Fall (September - November)	Winter ** (December - February)
* Overall LMA Rating (Fall Only)				

** Non-receipt of Summer or Winter Inspection Reports may effect overall annual rating.

*
SPRING INSPECTIONS: Overall maintenance ratings are not determined for the spring inspection results. Individual maintenance deficiencies are rated using the same criteria in the spring and in the fall.

FALL INSPECTIONS: The overall maintenance rating shown above is based on operation and maintenance deficiencies identified within the attached unit inspection reports. This rating is not intended to be an indication of risk.

Comments

**Flood Control Project Maintenance
Levee Inspections**

Unit Cover Sheet

Spring 2016 Levee Inspection Results

Sutter Maintenance Yard Maintenance Area 0005

Waterway			Bank	Unit Miles
Unit No. 01 Butte Creek			Left	15.08
	Spring (March - May)	Summer (June - August)	(September - November) Fall	Winter (December - February)
Unit Maintenance Rating (Fall Only)				
Date of Inspection	5/5/2016 - 5/5/2016			
DWR Inspector	Keith Millard			
Accompanied By	Shawn Freitag Sutter Maintenance Yard			

Summer & Winter Inspections

The Local Maintaining Agency (LMA) is responsible for summer and winter inspections. The LMA is required to submit a report regarding summer and winter inspections to the California Department of Water Resources (DWR).

DWR must be informed on the:

- a) completion of the inspection
- b) any changes other than the results of normal maintenance
- c) corrections to deficiencies noted in this report

If additional items are noted, further documentation of those items must also be submitted.

The LMA should submit this information to DWR using the LMA web application tool available at:

<http://cdec.water.ca.gov/lma.html>

If the LMA is unable to submit information on this webpage, please contact DWR for assistance.

The LMA should submit the information and any associated documentation by September 30 for summer inspections and March 31 for winter inspections.

**Flood Control Project Maintenance
Levee Inspections**

Levee Inspection Report By Mile - Spring 2016

Sutter Maintenance Yard Maintenance Area 0005

Waterway	Bank	Unit Miles	Inspection Start/End	Inspector
Unit No. 01 Butte Creek	Left	15.08	05/05/2016 05/05/2016	Keith Millard

LM Start		Rating **	A	Issue No.	11
LM End		Issue Type +	Ma	Location *	LS
Category	Earthen Levee		GPS Latitude/Longitude		
			Start	End	
Item	Operations & Maintenance Manuals			°	°
				°	°
DWR ID	DWR_MA0005_01_s_2013_11				
Comment Code					
Inspector Comment					
The LMA has the O&M manuals.					

No Photos

LM Start		Rating **	A	Issue No.	12
LM End		Issue Type +	Ma	Location *	LS
Category	Earthen Levee		GPS Latitude/Longitude		
			Start	End	
Item	Emergency Supplies & Equipment			°	°
				°	°
DWR ID	DWR_MA0005_01_s_2013_12				
Comment Code					
Inspector Comment					
The LMA has adequate flood fight supplies and equipment.					

No Photos

LM Start		Rating **	A	Issue No.	13
LM End		Issue Type +	Ma	Location *	LS
Category	Earthen Levee		GPS Latitude/Longitude		
			Start	End	
Item	Flood Preparedness & Training			°	°
				°	°
DWR ID	DWR_MA0005_01_s_2013_13				
Comment Code					
Inspector Comment					
The LMA completed flood fight training in 2014.					

No Photos

* Location LS : Land Side N/A : Not Applicable WS : Water Side CR : Crown	** Rating A : Acceptable M : Minimally Acceptable U : Unacceptable	N : Not Inspected/Rated C : Corrected A/W : Acceptable but Monitor & Maintain	+ Issue Type Ma : Maintenance Deficiency Ob : Design & System Obsolescence En : Enforcement
--	--	---	---

**Flood Control Project Maintenance
Levee Inspections**

Levee Inspection Report By Mile - Spring 2016

Sutter Maintenance Yard Maintenance Area 0005

Waterway	Bank	Unit Miles	Inspection Start/End	Inspector
Unit No. 01 Butte Creek	Left	15.08	05/05/2016 05/05/2016	Keith Millard

LM Start	0.56	Rating **	M	Issue No.	903
LM End	0.56	Issue Type +	Ma	Location *	LS
Category	Earthen Levee			GPS Latitude/Longitude	
				Start	End
Item	Vegetation			39.690745 °	39.690745 °
				-121.777342 °	-121.777342 °
DWR ID	DWR_MA0005_01_s_2012_903				
Comment Code					
V4 : Elderberries are blocking visibility and flood fight capability.					
Inspector Comment					

Photo 1 of 1 : SP_2016_MA0005_196_903_20160321_00020.jpg



View of the large elderberries along the L/S toe.

LM Start	0.77	Rating **	M	Issue No.	32
LM End	0.77	Issue Type +	Ma	Location *	LS
Category	Earthen Levee			GPS Latitude/Longitude	
				Start	End
Item	Trim / Thin Trees			39.687917 °	39.687917 °
				-121.777393 °	-121.777393 °
DWR ID	DWR_MA0005_01_s_2014_32				
Comment Code					
T2 : Thin trees to allow visibility of the ground and room to flood fight.					
Inspector Comment					

Photo 1 of 1 : SP_2016_MA0005_196_32_20160321_00012.jpg



Trim the trees along the landside slope.

LM Start	0.90	Rating **	M	Issue No.	44
LM End	0.92	Issue Type +	En	Location *	LS
Category	Earthen Levee			GPS Latitude/Longitude	
				Start	End
Item	Vegetation			39.686008 °	39.685766 °
				-121.777574 °	-121.777556 °
DWR ID	DWR_MA0005_01_s_2016_44				
Comment Code					
V6 : Landscaping					
Inspector Comment					
Oleander over wood fencing.					

Photo 1 of 1 : SP_2016_MA0005_196_44_20160509_00057.jpg



5/5/2016: Trim vegetation to allow visibility and access to L/S slope and toe.

* Location		** Rating		+ Issue Type	
LS : Land Side	N/A : Not Applicable	A : Acceptable	N : Not Inspected/Rated	Ma : Maintenance Deficiency	
WS : Water Side		M : Minimally Acceptable	C : Corrected	Ob : Design & System Obsolescence	
CR : Crown		U : Unacceptable	A/W : Acceptable but Monitor & Maintain	En : Enforcement	

**Flood Control Project Maintenance
Levee Inspections**

Levee Inspection Report By Mile - Spring 2016

Sutter Maintenance Yard Maintenance Area 0005

Waterway	Bank	Unit Miles	Inspection Start/End	Inspector
Unit No. 01 Butte Creek	Left	15.08	05/05/2016 05/05/2016	Keith Millard

LM Start	1.16	Rating **	M	Issue No.	43
LM End	1.22	Issue Type +	En	Location *	LS
Category	Earthen Levee			GPS Latitude/Longitude	
				Start	End
Item	Vegetation			39.682402 °	39.681563 °
				-121.776405 °	-121.776508 °
DWR ID	DWR_MA0005_01_s_2016_43				
Comment Code					
V6 : Landscaping					
Inspector Comment					

Photo 1 of 1 : SP_2016_MA0005_196_43_20160509_00056.jpg



5/5/2016: Trim vegetation to allow visibility and access to L/S toe and slope.

LM Start	1.24	Rating **	M	Issue No.	42
LM End	1.26	Issue Type +	En	Location *	LS
Category	Earthen Levee			GPS Latitude/Longitude	
				Start	End
Item	Encroachments			39.681305 °	39.681044 °
				-121.776533 °	-121.776547 °
DWR ID	DWR_MA0005_01_s_2016_42				
Comment Code					
FE : Fence					
Inspector Comment					
Wood plank fencing.					

Photo 1 of 1 : SP_2016_MA0005_196_42_20160509_00055.jpg



5/5/2016: Remove or modify wood plank fencing to allow visibility and access to L/S slope and toe.

* Location
LS : Land Side N/A : Not Applicable
WS : Water Side
CR : Crown

** Rating
A : Acceptable N : Not Inspected/Rated
M : Minimally Acceptable C : Corrected
U : Unacceptable A/W : Acceptable but Monitor & Maintain

+ Issue Type
Ma : Maintenance Deficiency
Ob : Design & System Obsolescence
En : Enforcement

**Flood Control Project Maintenance
Levee Inspections**

Levee Inspection Report By Mile - Spring 2016

Sutter Maintenance Yard Maintenance Area 0005

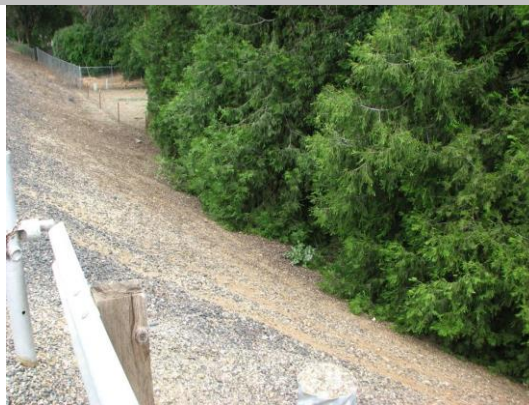
Waterway	Bank	Unit Miles	Inspection Start/End	Inspector
Unit No. 01 Butte Creek	Left	15.08	05/05/2016 05/05/2016	Keith Millard

LM Start	1.30	Rating **	M	Issue No.	41
LM End	1.36	Issue Type +	En	Location *	LS
Category	Earthen Levee			GPS Latitude/Longitude	
				Start	End
Item	Encroachments			39.680452 °	39.679551 °
				-121.776667 °	-121.776904 °
DWR ID	DWR_MA0005_01_s_2016_41				
Comment Code					
FE : Fence					
Inspector Comment					
Wood plank fencing across multiple properties.					

No Photos

LM Start	1.45	Rating **	M	Issue No.	40
LM End	1.45	Issue Type +	En	Location *	LS
Category	Earthen Levee			GPS Latitude/Longitude	
				Start	End
Item	Vegetation			39.678318 °	39.678318 °
				-121.777231 °	-121.777231 °
DWR ID	DWR_MA0005_01_s_2016_40				
Comment Code					
V6 : Landscaping					
Inspector Comment					
cedar trees need to be trimmed up.					

Photo 1 of 1 : SP_2016_MA0005_196_40_20160509_00054.jpg



5/5/2016: Trim trees to allow visibility and access to L/S slope and toe.

LM Start	1.53	Rating **	M	Issue No.	29
LM End	1.53	Issue Type +	En	Location *	LS
Category	Earthen Levee			GPS Latitude/Longitude	
				Start	End
Item	Encroachments			39.677130 °	39.677130 °
				-121.777583 °	-121.777583 °
DWR ID	DWR_MA0005_01_f_2014_29				
Comment Code					
PR : Prunings					
Inspector Comment					

Photo 1 of 1 : SP_2016_MA0005_196_29_20160321_00009.jpg



View of the prunings along the landside toe.

* Location		** Rating		+ Issue Type	
LS : Land Side	N/A : Not Applicable	A : Acceptable	N : Not Inspected/Rated	Ma : Maintenance Deficiency	
WS : Water Side		M : Minimally Acceptable	C : Corrected	Ob : Design & System Obsolescence	
CR : Crown		U : Unacceptable	A/W : Acceptable but Monitor & Maintain	En : Enforcement	

**Flood Control Project Maintenance
Levee Inspections**

Levee Inspection Report By Mile - Spring 2016

Sutter Maintenance Yard Maintenance Area 0005

Waterway	Bank	Unit Miles	Inspection Start/End	Inspector
Unit No. 01 Butte Creek	Left	15.08	05/05/2016 05/05/2016	Keith Millard

LM Start	1.53	Rating **	M	Issue No.	30
LM End	1.53	Issue Type +	En	Location *	LS
Category	Earthen Levee			GPS Latitude/Longitude	
				Start	End
Item	Encroachments			39.677130 °	39.677130 °
				-121.777583 °	-121.777583 °
DWR ID	DWR_MA0005_01_f_2014_30				
Comment Code					
EQ : Equipment					
Inspector Comment					

Photo 1 of 1 : SP_2016_MA0005_196_30_20160321_00010.jpg



View of the sprinkler pipe and equipment along the landside toe.

LM Start	1.61	Rating **	M	Issue No.	16
LM End	1.61	Issue Type +	Ma	Location *	LS
Category	Earthen Levee			GPS Latitude/Longitude	
				Start	End
Item	Slope Stability			39.676129 °	39.676129 °
				-121.778171 °	-121.778171 °
DWR ID	DWR_MA0005_01_s_2013_16				
Comment Code					
S3 : Repair the levee slope damaged by vehicle traffic and prevent access where possible.					
Inspector Comment					

Photo 1 of 1 : SP_2016_MA0005_196_16_20160321_00007.jpg



View of the unauthorized vehicle ramp on the landside slope.

LM Start	1.64	Rating **	U	Issue No.	34
LM End	1.64	Issue Type +	En	Location *	LS
Category	Earthen Levee			GPS Latitude/Longitude	
				Start	End
Item	Encroachments			39.675763 °	39.675763 °
				-121.778485 °	-121.778485 °
DWR ID	DWR_MA0005_01_f_2014_34				
Comment Code					
PR : Prunings					
Inspector Comment					

Photo 1 of 1 : SP_2016_MA0005_196_34_20160321_00014.jpg



View of the prunings along the landside toe.

* Location		** Rating		+ Issue Type	
LS : Land Side	N/A : Not Applicable	A : Acceptable	N : Not Inspected/Rated	Ma : Maintenance Deficiency	
WS : Water Side		M : Minimally Acceptable	C : Corrected	Ob : Design & System Obsolescence	
CR : Crown		U : Unacceptable	A/W : Acceptable but Monitor & Maintain	En : Enforcement	

Sutter Maintenance Yard Maintenance Area 0005

* Location	** Rating	+ Issue Type
LS : Land Side N/A : Not Applicable WS : Water Side CR : Crown	A : Acceptable N : Not Inspected/Rated M : Minimally Acceptable C : Corrected U : Unacceptable A/W : Acceptable but Monitor & Maintain	Ma : Maintenance Deficiency Ob : Design & System Obsolescence En : Enforcement

**Flood Control Project Maintenance
Levee Inspections**

Levee Inspection Report By Mile - Spring 2016

Sutter Maintenance Yard Maintenance Area 0005

Waterway	Bank	Unit Miles	Inspection Start/End	Inspector
Unit No. 01 Butte Creek	Left	15.08	05/05/2016 05/05/2016	Keith Millard

LM Start	1.88	Rating **	M	Issue No.	35
LM End	1.88	Issue Type +	En	Location *	LS
Category	Earthen Levee			GPS Latitude/Longitude	
				Start	End
Item	Encroachments			39.672627 °	39.672627 °
				-121.779778 °	-121.779778 °
DWR ID	DWR_MA0005_01_f_2014_35				
Comment Code					
PR : Prunings					
Inspector Comment					

Photo 1 of 1 : SP_2016_MA0005_196_35_20160321_00015.jpg



View of the prunings along the landside toe.

LM Start	2.09	Rating **	M	Issue No.	10
LM End	2.09	Issue Type +	En	Location *	LS
Category	Earthen Levee			GPS Latitude/Longitude	
				Start	End
Item	Encroachments			39.670112 °	39.670112 °
				-121.782012 °	-121.782012 °
DWR ID	DWR_MA0005_01_s_2016_10				
Comment Code					
FE : Fence					
Inspector Comment					
No permr was found for the gate					

Photo 1 of 1 : SP_2016_MA0005_196_10_20160321_00006.jpg



View of the unpermitted gate.

LM Start	2.10	Rating **	M	Issue No.	39
LM End	2.10	Issue Type +	En	Location *	LS
Category	Earthen Levee			GPS Latitude/Longitude	
				Start	End
Item	Encroachments			39.670036 °	39.670036 °
				-121.782017 °	-121.782017 °
DWR ID	DWR_MA0005_01_s_2016_39				
Comment Code					
PR : Prunings					
Inspector Comment					

No Photos

* Location		** Rating		+ Issue Type	
LS : Land Side	N/A : Not Applicable	A : Acceptable	N : Not Inspected/Rated	Ma : Maintenance Deficiency	
WS : Water Side		M : Minimally Acceptable	C : Corrected	Ob : Design & System Obsolescence	
CR : Crown		U : Unacceptable	A/W : Acceptable but Monitor & Maintain	En : Enforcement	

**Flood Control Project Maintenance
Levee Inspections**

Levee Inspection Report By Mile - Spring 2016

Sutter Maintenance Yard Maintenance Area 0005

Waterway	Bank	Unit Miles	Inspection Start/End	Inspector
Unit No. 01 Butte Creek	Left	15.08	05/05/2016 05/05/2016	Keith Millard

LM Start	2.54	Rating **	M	Issue No.	9
LM End	2.54	Issue Type +	Ma	Location *	LS
Category	Earthen Levee			GPS Latitude/Longitude	
				Start	End
Item	Slope Stability			39.663876 °	39.663876 °
				-121.784014 °	-121.784014 °
DWR ID	DWR_MA0005_01_f_2012_9				
Comment Code					
S3 : Repair the levee slope damaged by vehicle traffic and prevent access where possible.					
Inspector Comment					

Photo 1 of 1 : SP_2016_MA0005_196_9_20160321_00005.jpg



View of the vehicle erosion along the landside slope.

LM Start	2.81	Rating **	A/W	Issue No.	36
LM End	2.81	Issue Type +	En	Location *	LS
Category	Earthen Levee			GPS Latitude/Longitude	
				Start	End
Item	Encroachments			39.660203 °	39.660203 °
				-121.785107 °	-121.785107 °
DWR ID	DWR_MA0005_01_f_2015_36				
Comment Code					
PR : Prunings					
Inspector Comment					
Remove the prunings from the landside toe.					

Photo 1 of 1 : SP_2016_MA0005_196_36_20160321_00016.jpg



View of the prunings along the landside toe.

LM Start	3.00	Rating **	A/W	Issue No.	37
LM End	3.00	Issue Type +	En	Location *	LS
Category	Earthen Levee			GPS Latitude/Longitude	
				Start	End
Item	Encroachments			39.657815 °	39.657815 °
				-121.786693 °	-121.786693 °
DWR ID	DWR_MA0005_01_f_2015_37				
Comment Code					
PR : Prunings					
Inspector Comment					
Remove the prunings from the landside toe.					

Photo 1 of 1 : SP_2016_MA0005_196_37_20160321_00017.jpg



View of the prunings along the landside toe.

* Location LS : Land Side N/A : Not Applicable WS : Water Side CR : Crown		** Rating A : Acceptable M : Minimally Acceptable U : Unacceptable		N : Not Inspected/Rated C : Corrected A/W : Acceptable but Monitor & Maintain		+ Issue Type Ma : Maintenance Deficiency Ob : Design & System Obsolescence En : Enforcement	
--	--	--	--	---	--	---	--

**Flood Control Project Maintenance
Levee Inspections**

Levee Inspection Report By Mile - Spring 2016

Sutter Maintenance Yard Maintenance Area 0005

Waterway	Bank	Unit Miles	Inspection Start/End	Inspector
Unit No. 01 Butte Creek	Left	15.08	05/05/2016 05/05/2016	Keith Millard

LM Start	3.08	Rating **	M	Issue No.	2
LM End	3.08	Issue Type +	En	Location *	LS
Category	Earthen Levee			GPS Latitude/Longitude	
				Start	End
Item	Encroachments			39.656735 °	39.656735 °
				-121.787163 °	-121.787163 °
DWR ID	DWR_MA0005_01_f_2014_2				
Comment Code					
PR : Prunings					
Inspector Comment					
Remove the prunings from the landside toe.					

Photo 1 of 1 : SP_2016_MA0005_196_2_20160321_00002.jpg



View of the prunings along the landside toe.

LM Start	3.21	Rating **	M	Issue No.	38
LM End	3.21	Issue Type +	En	Location *	LS
Category	Earthen Levee			GPS Latitude/Longitude	
				Start	End
Item	Encroachments			39.654938 °	39.654938 °
				-121.787892 °	-121.787892 °
DWR ID	DWR_MA0005_01_f _ 2015_38				
Comment Code					
PR : Prunings					
Inspector Comment					
Remove the prunings from the landside toe.					

Photo 1 of 1 : SP_2016_MA0005_196_38_20160321_00018.jpg



View of the prunings along the landside toe.

LM Start	3.42	Rating **	M	Issue No.	31
LM End	3.42	Issue Type +	En	Location *	LS
Category	Earthen Levee			GPS Latitude/Longitude	
				Start	End
Item	Encroachments			39.652028 °	39.652028 °
				-121.789090 °	-121.789090 °
DWR ID	DWR_MA0005_01_s_2015_31				
Comment Code					
PR : Prunings					
Inspector Comment					
Remove the prunings from the landside toe.					

Photo 1 of 1 : SP_2016_MA0005_196_31_20160321_00011.jpg



View of the prunings along the landside toe.

* Location		** Rating		+ Issue Type	
LS : Land Side	N/A : Not Applicable	A : Acceptable	N : Not Inspected/Rated	Ma : Maintenance Deficiency	
WS : Water Side		M : Minimally Acceptable	C : Corrected	Ob : Design & System Obsolescence	
CR : Crown		U : Unacceptable	A/W : Acceptable but Monitor & Maintain	En : Enforcement	

**Flood Control Project Maintenance
Levee Inspections**

Levee Inspection Report By Mile - Spring 2016

Sutter Maintenance Yard Maintenance Area 0005

Waterway	Bank	Unit Miles	Inspection Start/End	Inspector
Unit No. 01 Butte Creek	Left	15.08	05/05/2016 05/05/2016	Keith Millard

LM Start	3.61	Rating **	M	Issue No.	908
LM End	3.61	Issue Type +	En	Location *	LS
Category	Supplemental			GPS Latitude/Longitude	
				Start	End
Item	DWR UCIP Field Study			39.649522 °	39.649522 °
				-121.787965 °	-121.787965 °
DWR ID					

Comment Code

Inspector Comment

FS_ID:48266
DS_ID:1615
EP_NO: N/A
Repair Type: Non-Urgent
Crossing Status: Found
UCIP Comments: 5/9/2016 Abandoned crossing. Slide gate stem bent and wheel is missing. 8/5/2015 Abandoned crossing. Slide gate stem is bent and gate is inoperable. Needs to be properly abandoned. 12/8/2014 Same as last inspection. 6/11/2014 Same as last inspection. 11/20/2013 Same as last inspection. 5/29/2013 Same as last inspection. 10/30/2012 Pipe appears to be abandoned. Slide gate open and inoperable. Pipe should be properly abandoned. FIELD_STRUCT_DESC: 30-inch corrugated metal irrigation pipe (siphon) through the levee, 10.5 feet below the crown. Slide gate in corrugated metal riser on waterside (WS) slope. Concrete distribution box on landside (LS) toe and concrete overflow and siphon box at edge of berm. [Additional Reference(s): DWR Levee Log, 1990. USACE Sacramento O&M Manual, April 1955 (Station 835+21)].
FS Date: 5/25/2016 7:40:09 AM

LM Start	3.61	Rating **	M	Issue No.	908 (cont)
LM End	3.61	Issue Type +	En	Location *	LS

Photo 1 of 2 : UCIP_SP_2016_48266_67928.jpg



Concrete distribution box on LS toe.

Photo 2 of 2 : UCIP_SP_2016_48266_67927.jpg



CMP riser with slide gate on WS shoulder. Notice bent screw in open position.

* Location LS : Land Side N/A : Not Applicable WS : Water Side CR : Crown		** Rating A : Acceptable M : Minimally Acceptable U : Unacceptable N : Not Inspected/Rated C : Corrected A/W : Acceptable but Monitor & Maintain		+ Issue Type Ma : Maintenance Deficiency Ob : Design & System Obsolescence En : Enforcement	
--	--	---	--	---	--

**Flood Control Project Maintenance
Levee Inspections**

Levee Inspection Report By Mile - Spring 2016

Sutter Maintenance Yard Maintenance Area 0005

Waterway	Bank	Unit Miles	Inspection Start/End	Inspector
Unit No. 01 Butte Creek	Left	15.08	05/05/2016 05/05/2016	Keith Millard

LM Start	3.87	Rating **	M	Issue No.	909
LM End	3.87	Issue Type +	En	Location *	LS
Category	Supplemental			GPS Latitude/Longitude	
				Start	End
Item	DWR UCIP Field Study			39.646217 °	39.646217 °
				-121.785431 °	-121.785431 °
DWR ID					
Comment Code					
Inspector Comment					
FS_ID:48267 DS_ID:1616 EP_NO: N/A Repair Type: Non-Urgent Crossing Status: Found UCIP Comments: 5/9/2016 Crossing appears to be in good condition.8/5/2015 WS pipe end is being overgrown by trees and other vegetation. Needs to be cleared back.12/8/2014 Same as last inspection.6/11/2014 Same as last inspection.11/20/2013 Same as last inspection.5/29/2013 Same as last inspection. FIELD_STRUCT_DESC: 24-inch drainage pipe through the levee, 16.5 feet below the crown. Slide gate in CMP riser on waterside (WS) slope. Flap gate at waterside toe. Inlet on landside (LS) toe, not found. [Additional Reference(s): DWR Levee Log, 1990. Sacramento O&M Manual 515, April 1955 (Station 717+50)]. FS Date: 5/25/2016 7:41:08 AM					

LM Start	3.87	Rating **	M	Issue No.	909 (cont)
LM End	3.87	Issue Type +	En	Location *	LS

Photo 1 of 2 : UCIP_SP_2016_48267_67931.jpg



CMP riser and slide gate on WS shoulder.

Photo 2 of 2 : UCIP_SP_2016_48267_67930.jpg



Unable to locate inlet on LS.

* Location LS : Land Side N/A : Not Applicable WS : Water Side CR : Crown		** Rating A : Acceptable N : Not Inspected/Rated M : Minimally Acceptable C : Corrected U : Unacceptable A/W : Acceptable but Monitor & Maintain		+ Issue Type Ma : Maintenance Deficiency Ob : Design & System Obsolescence En : Enforcement
--	--	---	--	---

**Flood Control Project Maintenance
Levee Inspections**

Levee Inspection Report By Mile - Spring 2016

Sutter Maintenance Yard Maintenance Area 0005

Waterway	Bank	Unit Miles	Inspection Start/End	Inspector
Unit No. 01 Butte Creek	Left	15.08	05/05/2016 05/05/2016	Keith Millard

LM Start	3.90	Rating **	M	Issue No.	910
LM End	3.90	Issue Type +	En	Location *	LS
Category	Supplemental			GPS Latitude/Longitude	
				Start	End
Item	DWR UCIP Field Study			39.645846 °	39.645846 °
				-121.785155 °	-121.785155 °
DWR ID					

Comment Code

Inspector Comment

FS_ID:48269
DS_ID:1619
EP_NO: 6544-A
Repair Type: Non-Urgent
Crossing Status: Indicator Found
UCIP Comments: 5/9/2016 Crossing appears to be in good condition.8/5/2015 Pipe is suspected to cross inside of bridge.12/8/2014 Same as last inspection.6/11/2014 Same as last inspection.11/20/2013 Same as last inspection.5/29/2013 Same as last inspection.10/30/2012 Pipeline should be marked where pipe crosses levee as it is 4-feet below the surface.
FIELD_STRUCT_DESC: 6-inch concrete encased steel high pressure gas pipe through the levee, 4.0 feet below the crown. 8-inch diameter PG&E gas access manhole located on south side of road 250-feet east of levee crown. (Permit No. 6544A, 1969 - PG&E) [Additional Reference(s): DWR Levee Log, 1990].
FS Date: 5/25/2016 7:44:52 AM

LM Start	3.90	Rating **	M	Issue No.	910 (cont)
LM End	3.90	Issue Type +	En	Location *	LS

Photo 1 of 2 : UCIP_SP_2016_48269_67936.jpg



PG&E access lid on south edge of roadway.

Photo 2 of 2 : UCIP_SP_2016_48269_67935.jpg



Location of PG&E access lid 250-feet east of levee crown on south side of roadway.

* Location	** Rating	+ Issue Type
LS : Land Side WS : Water Side CR : Crown	A : Acceptable M : Minimally Acceptable U : Unacceptable	Ma : Maintenance Deficiency Ob : Design & System Obsolescence En : Enforcement
	N : Not Inspected/Rated C : Corrected A/W : Acceptable but Monitor & Maintain	

**Flood Control Project Maintenance
Levee Inspections**

Levee Inspection Report By Mile - Spring 2016

Sutter Maintenance Yard Maintenance Area 0005

Waterway	Bank	Unit Miles	Inspection Start/End	Inspector
Unit No. 01 Butte Creek	Left	15.08	05/05/2016 05/05/2016	Keith Millard

LM Start	4.13	Rating **	M	Issue No.	27
LM End	4.13	Issue Type +	En	Location *	LS
Category	Earthen Levee			GPS Latitude/Longitude	
				Start	End
Item	Encroachments			39.643100 °	39.643100 °
				-121.782827 °	-121.782827 °
DWR ID	DWR_MA0005_01_s_2016_27				
Comment Code					
EQ : Equipment					
Inspector Comment					
Agricultural piping on trailer.					

Photo 1 of 1 : SP_2016_MA0005_196_27_20160509_00053.jpg



5/5/2016: Remove equipment from L/S toe.

LM Start	5.56	Rating **	M	Issue No.	911
LM End	5.56	Issue Type +	En	Location *	LS
Category	Supplemental			GPS Latitude/Longitude	
				Start	End
Item	DWR UCIP Field Study			39.624559 °	39.624559 °
				-121.772141 °	-121.772141 °
DWR ID					
Comment Code					
Inspector Comment					
FS_ID:48271 DS_ID:1768 EP_NO: N/A Repair Type: Non-Urgent Crossing Status: Found UCIP Comments: 5/9/2016 Abandoned pipe. Needs a cover for standpipe.8/5/2015 Abandoned pipes. Need covers made for tops of standpipes to prevent falls. Pipe 1/2 filled with soil at slide gate on WS.5/29/2013 Same as last inspection. Land owner said pipes are abandoned and no longer used. Covers should be made for top of standpipe to prevent falls. Pipes should be properly abandoned.11/19/2013 Same as last inspection.6/11/2014 Same as last inspection.12/8/2014 Same as last inspection. FIELD_STRUCT_DESC: 2 of 2. 36-inch pipe through levee 11.0 feet below crown. Slide gate in 54-inch corrugated metal riser on waterward slope and concrete "U" headwall on the landward side. (USACE 1957) FS Date: 5/25/2016 7:46:45 AM					

Photo 1 of 2 : UCIP_SP_2016_48271_67939.jpg



Headwall at LS toe.

* Location		** Rating		+ Issue Type	
LS : Land Side	N/A : Not Applicable	A : Acceptable	N : Not Inspected/Rated	Ma : Maintenance Deficiency	
WS : Water Side		M : Minimally Acceptable	C : Corrected	Ob : Design & System Obsolescence	
CR : Crown		U : Unacceptable	A/W : Acceptable but Monitor & Maintain	En : Enforcement	

**Flood Control Project Maintenance
Levee Inspections**

Levee Inspection Report By Mile - Spring 2016

Sutter Maintenance Yard Maintenance Area 0005

Waterway	Bank	Unit Miles	Inspection Start/End	Inspector
Unit No. 01 Butte Creek	Left	15.08	05/05/2016 05/05/2016	Keith Millard

LM Start	5.56	Rating **	M	Issue No.	911 (cont)	
LM End	5.56	Issue Type +	En	Location *	LS	
Category	Supplemental			GPS Latitude/Longitude		
				Start		End
Item	DWR UCIP Field Study			39.624559 °		39.624559 °
				-121.772141 °		-121.772141 °
DWR ID						
Comment Code						
Inspector Comment						
FS_ID:48271						
DS_ID:1768						
EP_NO: N/A						
Repair Type: Non-Urgent						
Crossing Status: Found						
UCIP Comments: 5/9/2016 Abandoned pipe. Needs a cover for standpipe.8/5/2015 Abandoned pipes. Need covers made for tops of standpipes to prevent falls. Pipe 1/2 filled with soil at slide gate on WS.5/29/2013 Same as last inspection. Land owner said pipes are abandoned and no longer used. Covers should be made for top of standpipe to prevent falls. Pipes should be properly abandoned.11/19/2013 Same as last inspection.6/11/2014 Same as last inspection.12/8/2014 Same as last inspection.						
FIELD_STRUCT_DESC: 2 of 2. 36-inch pipe through levee 11.0 feet below crown. Slide gate in 54-inch corrugated metal riser on waterward slope and concrete "U" headwall on the landward side. (USACE 1957)						
FS Date: 5/25/2016 7:46:45 AM						

Photo 2 of 2 : UCIP_SP_2016_48271_67938.jpg



Headwall at LS toe.

* Location LS : Land Side N/A : Not Applicable WS : Water Side CR : Crown		** Rating A : Acceptable N : Not Inspected/Rated M : Minimally Acceptable C : Corrected U : Unacceptable A/W : Acceptable but Monitor & Maintain		+ Issue Type Ma : Maintenance Deficiency Ob : Design & System Obsolescence En : Enforcement
--	--	---	--	---

**Flood Control Project Maintenance
Levee Inspections**

Levee Inspection Report By Mile - Spring 2016

Sutter Maintenance Yard Maintenance Area 0005

Waterway	Bank	Unit Miles	Inspection Start/End	Inspector
Unit No. 01 Butte Creek	Left	15.08	05/05/2016 05/05/2016	Keith Millard

LM Start	5.56	Rating **	M	Issue No.	912	
LM End	5.56	Issue Type +	En	Location *	LS	
Category	Supplemental			GPS Latitude/Longitude		
				Start	End	
Item	DWR UCIP Field Study			39.624559 °	39.624559 °	
				-121.772141 °	-121.772141 °	
DWR ID						
Comment Code						
Inspector Comment						
FS_ID:48272						
DS_ID:1620						
EP_NO: N/A						
Repair Type: Non-Urgent						
Crossing Status: Found						
UCIP Comments: 5/9/2016 Abandoned pipe. Needs a cover for the standpipe.8/5/2015 Abandoned crossing. Covers need to be made for tops of standpipes to prevent falls.12/8/2014 Same as last inspection.6/11/2014 Same as last inspection.11/19/2013 Same as last inspection.5/29/2013 Same as last inspection. Land owner said pipes are abandoned and no longer used. Covers should be made for top of standpipe to prevent falls. Pipes should be properly abandoned.10/30/2012 Pipe 1/2 filled with soil at slide gate end.						
FIELD_STRUCT_DESC: 1 of 2: 36-inch drainage pipe through the levee, 11.0 feet below the crown. Slide gate in 54-inch corrugated metal riser on waterside (WS) slope. Concrete "U" headwall on the landside (LS). [Additional Reference(s): DWR Levee Log, 1990. Sacramento O&M Manual 516, April 1960 (Station 470+00)].						
FS Date: 5/25/2016 7:47:45 AM						

LM Start	5.56	Rating **	M	Issue No.	912 (cont)
LM End	5.56	Issue Type +	En	Location *	LS

Photo 1 of 2 : UCIP_SP_2016_48272_67941.jpg



Headwall at LS toe.

Photo 2 of 2 : UCIP_SP_2016_48272_67940.jpg



54-inch CMP riser and slide gate on WS shoulder.

* Location LS : Land Side N/A : Not Applicable WS : Water Side CR : Crown		** Rating A : Acceptable N : Not Inspected/Rated M : Minimally Acceptable C : Corrected U : Unacceptable A/W : Acceptable but Monitor & Maintain		+ Issue Type Ma : Maintenance Deficiency Ob : Design & System Obsolescence En : Enforcement
--	--	---	--	---

**Flood Control Project Maintenance
Levee Inspections**

Levee Inspection Report By Mile - Spring 2016

Sutter Maintenance Yard Maintenance Area 0005

Waterway	Bank	Unit Miles	Inspection Start/End	Inspector
Unit No. 01 Butte Creek	Left	15.08	05/05/2016 05/05/2016	Keith Millard

LM Start	5.69	Rating **	M	Issue No.	55
LM End	6.23	Issue Type +	En	Location *	LS
Category	Earthen Levee			GPS Latitude/Longitude	
				Start	End
Item	Encroachments			39.622766 °	39.615666 °
				-121.773159 °	-121.777353 °
DWR ID	DWR_MA0005_01_s_2015_55				
Comment Code					
DT : Ditch					
Inspector Comment					

Photo 1 of 1 : SP_2016_MA0005_196_55_20160321_00019.jpg



View of the irrigation ditch along the landside toe.

LM Start	7.58	Rating **	M	Issue No.	914
LM End	7.58	Issue Type +	En	Location *	LS
Category	Supplemental			GPS Latitude/Longitude	
				Start	End
Item	DWR UCIP Field Study			39.597725 °	39.597725 °
				-121.787257 °	-121.787257 °
DWR ID					
Comment Code					
Inspector Comment					
FS_ID:48429 DS_ID:1628 EP_NO: N/A Repair Type: Non-Urgent Crossing Status: Found UCIP Comments: 5/11/2016 Possibly an abandoned crossing. LS inlet was over 50% buried and nothing was found on the WS.8/4/2015 LS pipe end filled about 50% with soil and WS pipe end is buried.12/8/2014 Same as last inspection.6/11/2014 Same as last inspection.11/19/2013 Same as last inspection.5/29/2013 Same as last inspection.10/30/2012 Pipe filled with soil and outlet/appurtances are burried. FIELD_STRUCT_DESC: 24-inch steel drainage pipe through the levee, 8.5 feet below the crown. Flap gate on the waterside (WS). Concrete "U" shaped headwall on landside (LS) toe. [Additional Reference(s): DWR Levee Log, 1990. Sacramento O&M Manual 515, April 1955 (Station 576+72)]. FS Date: 5/25/2016 8:43:00 AM					

Photo 1 of 2 : UCIP_SP_2016_48429_67970.jpg



Headwall at LS toe.

* Location	** Rating	+ Issue Type
LS : Land Side WS : Water Side CR : Crown	A : Acceptable M : Minimally Acceptable U : Unacceptable	Ma : Maintenance Deficiency Ob : Design & System Obsolescence En : Enforcement
	N : Not Inspected/Rated C : Corrected A/W : Acceptable but Monitor & Maintain	

**Flood Control Project Maintenance
Levee Inspections**

Levee Inspection Report By Mile - Spring 2016

Sutter Maintenance Yard Maintenance Area 0005

Waterway	Bank	Unit Miles	Inspection Start/End	Inspector
Unit No. 01 Butte Creek	Left	15.08	05/05/2016 05/05/2016	Keith Millard

LM Start	7.58	Rating **	M	Issue No.	914 (cont)
LM End	7.58	Issue Type +	En	Location *	LS
Category	Supplemental			GPS Latitude/Longitude	
				Start	End
Item	DWR UCIP Field Study			39.597725 °	39.597725 °
				-121.787257 °	-121.787257 °
DWR ID					
Comment Code					
Inspector Comment					
FS_ID:48429 DS_ID:1628 EP_NO: N/A Repair Type: Non-Urgent Crossing Status: Found UCIP Comments: 5/11/2016 Possibly an abandoned crossing. LS inlet was over 50% buried and nothing was found on the WS.8/4/2015 LS pipe end filled about 50% with soil and WS pipe end is buried.12/8/2014 Same as last inspection.6/11/2014 Same as last inspection.11/19/2013 Same as last inspection.5/29/2013 Same as last inspection.10/30/2012 Pipe filled with soil and outlet/appurtances are buried. FIELD_STRUCT_DESC: 24-inch steel drainage pipe through the levee, 8.5 feet below the crown. Flap gate on the waterside (WS). Concrete "U" shaped headwall on landside (LS) toe. [Additional Reference(s): DWR Levee Log, 1990. Sacramento O&M Manual 515, April 1955 (Station 576+72)]. FS Date: 5/25/2016 8:43:00 AM					

Photo 2 of 2 : UCIP_SP_2016_48429_67969.jpg



Headwall at LS toe.

* Location LS : Land Side N/A : Not Applicable WS : Water Side CR : Crown	** Rating A : Acceptable M : Minimally Acceptable U : Unacceptable	N : Not Inspected/Rated C : Corrected A/W : Acceptable but Monitor & Maintain	+ Issue Type Ma : Maintenance Deficiency Ob : Design & System Obsolescence En : Enforcement
--	--	---	---

**Flood Control Project Maintenance
Levee Inspections**

Levee Inspection Report By Mile - Spring 2016

Sutter Maintenance Yard Maintenance Area 0005

Waterway	Bank	Unit Miles	Inspection Start/End	Inspector
Unit No. 01 Butte Creek	Left	15.08	05/05/2016 05/05/2016	Keith Millard

LM Start	8.21	Rating **	M	Issue No.	915
LM End	8.21	Issue Type +	En	Location *	LS
Category	Supplemental			GPS Latitude/Longitude	
				Start	End
Item	DWR UCIP Field Study			39.589751 °	39.589751 °
				-121.792818 °	-121.792818 °
DWR ID					

Comment Code

Inspector Comment

FS_ID:48432
DS_ID:1629
EP_NO: N/A
Repair Type: Non-Urgent
Crossing Status: Found
UCIP Comments: 5/11/2016 WS flap gate was about 50% buried and LS was 100% buried. Appears to be an abandoned crossing. 8/4/2015 WS flap gate is partially buried by soil and being overgrown with vegetation. LS pipe end was underwater and suspected to still be completely buried with soil. 12/8/2014 Same as last inspection. 6/11/2014 Same as last inspection. 11/19/2013 Same as last inspection. 5/29/2013 Same as last inspection. 10/30/2012 Pipe filled with soil.
FIELD_STRUCT_DESC: 24-inch corrugated metal drainage pipe through the levee, 9.3 feet below the crown. Flap gate on the waterside (WS). Concrete headwall at landside (LS) and waterside toes.
[Additional Reference(s): DWR Levee Log, 1990. Sacramento O&M 515, April 1955 (Station 609+79)].
FS Date: 5/25/2016 8:50:00 AM

LM Start	8.21	Rating **	M	Issue No.	915 (cont)
LM End	8.21	Issue Type +	En	Location *	LS

Photo 1 of 2 : UCIP_SP_2016_48432_67973.jpg



Outlet at WS toe.

Photo 2 of 2 : UCIP_SP_2016_48432_67972.jpg



Buried inlet at LS toe.

* Location	** Rating	+ Issue Type
LS : Land Side WS : Water Side CR : Crown	A : Acceptable M : Minimally Acceptable U : Unacceptable	Ma : Maintenance Deficiency Ob : Design & System Obsolescence En : Enforcement
	N : Not Inspected/Rated C : Corrected A/W : Acceptable but Monitor & Maintain	

**Flood Control Project Maintenance
Levee Inspections**

Levee Inspection Report By Mile - Spring 2016

Sutter Maintenance Yard Maintenance Area 0005

Waterway	Bank	Unit Miles	Inspection Start/End	Inspector
Unit No. 01 Butte Creek	Left	15.08	05/05/2016 05/05/2016	Keith Millard

LM Start	9.08	Rating **	M	Issue No.	916
LM End	9.08	Issue Type +	En	Location *	LS
Category	Supplemental			GPS Latitude/Longitude	
				Start	End
Item	DWR UCIP Field Study			39.579908 °	39.579908 °
				-121.802790 °	-121.802790 °
DWR ID					

Comment Code

Inspector Comment

FS_ID:48479
DS_ID:1631
EP_NO: N/A
Repair Type: Non-Urgent
Crossing Status: Found
UCIP Comments: 5/11/2016 Abandoned pipe.8/4/2015 Abandoned pipe. Casey Wilder has started the steps to have the pipe properly abandoned and removed from the levee.12/8/2014 Same as last inspection.6/11/2014 Same as last inspection.11/19/2013 Same as last inspection.5/29/2013 Same as last inspection.10/30/2012 Need to confirm proper abandonment of pipe. Pipe should be plugged on LS.
FIELD_STRUCT_DESC: 16-inch steel irrigation pipe through the levee, 11.5 feet below the crown. Distribution box at the landside (LS) toe.
[Additional Reference(s): DWR Levee Log, 1990. Sacramento O&M Manual 515, April 1955 (Station)].
FS Date: 5/25/2016 9:01:00 AM

LM Start	9.08	Rating **	M	Issue No.	916 (cont)
LM End	9.08	Issue Type +	En	Location *	LS

Photo 1 of 2 : UCIP_SP_2016_48479_67976.jpg



Concrete distribution box at LS toe.

Photo 2 of 2 : UCIP_SP_2016_48479_67975.jpg



WS shoulder.

* Location	** Rating	+ Issue Type
LS : Land Side WS : Water Side CR : Crown	A : Acceptable M : Minimally Acceptable U : Unacceptable	Ma : Maintenance Deficiency Ob : Design & System Obsolescence En : Enforcement
	N : Not Inspected/Rated C : Corrected A/W : Acceptable but Monitor & Maintain	

**Flood Control Project Maintenance
Levee Inspections**

Levee Inspection Report By Mile - Spring 2016

Sutter Maintenance Yard Maintenance Area 0005

Waterway	Bank	Unit Miles	Inspection Start/End	Inspector
Unit No. 01 Butte Creek	Left	15.08	05/05/2016 05/05/2016	Keith Millard

LM Start	9.54	Rating **	M	Issue No.	5
LM End	10.33	Issue Type +	En	Location *	LS
Category	Earthen Levee			GPS Latitude/Longitude	
				Start	End
Item	Encroachments			39.574837 °	39.567892 °
				-121.807913 °	-121.819283 °
DWR ID	DWR_MA0005_01_s_2012_5				
Comment Code					
DT : Ditch					
Inspector Comment					

Photo 1 of 1 : SP_2016_MA0005_196_5_20160321_00003.jpg



View of the agricultural ditch along the L/S toe.

LM Start	10.04	Rating **	M	Issue No.	905
LM End	10.04	Issue Type +	En	Location *	LS
Category	Supplemental			GPS Latitude/Longitude	
				Start	End
Item	DWR UCIP Field Study			39.570596 °	39.570596 °
				-121.815215 °	-121.815215 °
DWR ID					
Comment Code					
Inspector Comment					
FS_ID:48498 DS_ID:1633 EP_NO: N/A Repair Type: Non-Urgent Crossing Status: Found UCIP Comments: 5/11/2016 Abandoned crossing.8/4/2015 Abandoned pipe. Casey Wilder has started the steps to have the pipe properly abandoned and removed from the levee.12/8/2014 Same as last inspection.6/11/2014 Same as last inspection.11/19/2013 Same as last inspection.5/29/2013 Same as last inspection.10/30/2012 Pipe and headwall buried on WS, no access to slide gate. FIELD_STRUCT_DESC: 24-inch corrugated metal pipe through the levee, 12.5 feet below the crown. Slide gate on the waterside (WS). Flap gate and headwall on the landside (LS). Concrete headwall at the WS toe. [Additional Reference(s): DWR Levee Log, 1990. Sacramento O&M Manual 515, April 1955 (Station 706+00)]. FS Date: 5/25/2016 9:12:00 AM					

Photo 1 of 1 : UCIP_SP_2016_48498_67986.jpg



Flap gate and headwall at LS toe in irrigation or drainage ditch.

* Location	** Rating	+ Issue Type
LS : Land Side WS : Water Side CR : Crown	A : Acceptable M : Minimally Acceptable U : Unacceptable	Ma : Maintenance Deficiency Ob : Design & System Obsolescence En : Enforcement
	N : Not Inspected/Rated C : Corrected A/W : Acceptable but Monitor & Maintain	

**Flood Control Project Maintenance
Levee Inspections**

Levee Inspection Report By Mile - Spring 2016

Sutter Maintenance Yard Maintenance Area 0005

Waterway	Bank	Unit Miles	Inspection Start/End	Inspector
Unit No. 01 Butte Creek	Left	15.08	05/05/2016 05/05/2016	Keith Millard

LM Start	10.26	Rating **	M	Issue No.	904
LM End	10.26	Issue Type +	En	Location *	LS
Category	Supplemental			GPS Latitude/Longitude	
				Start	End
Item	DWR UCIP Field Study			39.568523 °	39.568523 °
				-121.818232 °	-121.818232 °
DWR ID					
Comment Code					
Inspector Comment					
FS_ID:48497 DS_ID:1634 EP_NO: N/A Repair Type: Non-Urgent Crossing Status: Found UCIP Comments: 5/11/2016 Abandoned crossing.8/4/2015 Abandoned pipe. Casey Wilder has started the steps to have the pipe properly abandoned and removed from the levee.12/8/2014 Same as last inspection.6/11/2014 Same as last inspection.11/19/2013 Same as last inspection.5/29/2013 Same as last inspection. FIELD_STRUCT_DESC: 24-inch corrugated metal irrigation pipe through the levee, 14.5 feet below the crown. Slide gate on the waterside (WS) on concrete headwall. Flap gate on the landside (LS). [Additional Reference(s): DWR Levee Log, 1990. Sacramento O&M Manual 515, April 1955 (Station 717+50)]. FS Date: 5/25/2016 9:24:00 AM					

LM Start	10.26	Rating **	M	Issue No.	904 (cont)
LM End	10.26	Issue Type +	En	Location *	LS

Photo 1 of 2 : UCIP_SP_2016_48497_67989.jpg



Pipe and flap gate on LS toe.

Photo 2 of 2 : UCIP_SP_2016_48497_67988.jpg



headwall at WS toe.

* Location LS : Land Side N/A : Not Applicable WS : Water Side CR : Crown		** Rating A : Acceptable N : Not Inspected/Rated M : Minimally Acceptable C : Corrected U : Unacceptable A/W : Acceptable but Monitor & Maintain		+ Issue Type Ma : Maintenance Deficiency Ob : Design & System Obsolescence En : Enforcement
--	--	---	--	---

**Flood Control Project Maintenance
Levee Inspections**

Levee Inspection Report By Mile - Spring 2016

Sutter Maintenance Yard Maintenance Area 0005

Waterway	Bank	Unit Miles	Inspection Start/End	Inspector
Unit No. 01 Butte Creek	Left	15.08	05/05/2016 05/05/2016	Keith Millard

LM Start	10.37	Rating **	M	Issue No.	26
LM End	10.37	Issue Type +	En	Location *	LS
Category	Earthen Levee			GPS Latitude/Longitude	
				Start	End
Item	Encroachments			39.567541 °	39.567541 °
				-121.819786 °	-121.819786 °
DWR ID	DWR_MA0005_01_s_2016_26				
Comment Code					
EQ : Equipment					
Inspector Comment					
Abandoned motorhomes and farm equipment.					

Photo 1 of 1 : SP_2016_MA0005_196_26_20160509_00052.jpg



5/5/2016: Remove abandoned motorhome and equipment from L/S toe.

LM Start	10.84	Rating **	M	Issue No.	906
LM End	10.84	Issue Type +	En	Location *	LS
Category	Supplemental			GPS Latitude/Longitude	
				Start	End
Item	DWR UCIP Field Study			39.562559 °	39.562559 °
				-121.825808 °	-121.825808 °
DWR ID					
Comment Code					
Inspector Comment					
FS_ID:48499 DS_ID:1635 EP_NO: N/A Repair Type: Non-Urgent Crossing Status: Found UCIP Comments: 5/11/2016 Abandoned crossing.8/4/2015 Abandoned pipe. Casey Wilder has started the steps to have the pipe properly abandoned and removed from the levee.12/8/2014 Same as last inspection.6/11/2014 Same as last inspection.11/19/2013 Same as last inspection.5/29/2013 Same as last inspection.10/30/2012 Pipe buried on both sides of levee. FIELD_STRUCT_DESC: 30-inch corrugated metal drainage pipe through the levee, 12.2 feet below the crown. Flap gate on the waterside (WS) end. [Additional Reference(s): DWR Levee Log, 1990. USACE Sacramento O&M Manual 515 (Station 748+53)]. FS Date: 5/25/2016 9:29:00 AM					

Photo 1 of 2 : UCIP_SP_2016_48499_67991.jpg



Concrete headwall at LS toe.

* Location LS : Land Side N/A : Not Applicable WS : Water Side CR : Crown		** Rating A : Acceptable M : Minimally Acceptable U : Unacceptable		N : Not Inspected/Rated C : Corrected A/W : Acceptable but Monitor & Maintain		+ Issue Type Ma : Maintenance Deficiency Ob : Design & System Obsolescence En : Enforcement	
---	--	--	--	---	--	---	--

**Flood Control Project Maintenance
Levee Inspections**

Levee Inspection Report By Mile - Spring 2016

Sutter Maintenance Yard Maintenance Area 0005

Waterway	Bank	Unit Miles	Inspection Start/End	Inspector
Unit No. 01 Butte Creek	Left	15.08	05/05/2016 05/05/2016	Keith Millard

LM Start	10.84	Rating **	M	Issue No.	906 (cont)	
LM End	10.84	Issue Type +	En	Location *	LS	
Category	Supplemental			GPS Latitude/Longitude		
				Start		End
Item	DWR UCIP Field Study			39.562559 °		39.562559 °
				-121.825808 °		-121.825808 °
DWR ID						
Comment Code						
Inspector Comment						
FS_ID:48499						
DS_ID:1635						
EP_NO: N/A						
Repair Type: Non-Urgent						
Crossing Status: Found						
UCIP Comments: 5/11/2016 Abandoned crossing.8/4/2015						
Abandoned pipe. Casey Wilder has started the steps to have the pipe properly abandoned and removed from the levee.12/8/2014 Same as last inspection.6/11/2014 Same as last inspection.11/19/2013						
Same as last inspection.5/29/2013 Same as last						
inspection.10/30/2012 Pipe buried on both sides of levee.						
FIELD_STRUCT_DESC: 30-inch corrugated metal drainage pipe through the levee, 12.2 feet below the crown. Flap gate on the waterside (WS) end. [Additional Reference(s): DWR Levee Log, 1990. USACE Sacramento O&M Manual 515 (Station 748+53)].						
FS Date: 5/25/2016 9:29:00 AM						

Photo 2 of 2 : UCIP_SP_2016_48499_67990.jpg



Concrete headwall at LS toe.

LM Start	11.85	Rating **	M	Issue No.	6
LM End	13.64	Issue Type +	En	Location *	LS
Category	Earthen Levee			GPS Latitude/Longitude	
				Start	End
Item	Encroachments			39.551235 °	39.531462 °
				-121.837697 °	-121.856165 °
DWR ID	DWR_MA0005_01_s_2012_6				
Comment Code					
DT : Ditch					
Inspector Comment					

Photo 1 of 1 : SP_2016_MA0005_196_6_20160321_00004.jpg



View of the agricultural ditch along the L/S toe.

* Location LS : Land Side N/A : Not Applicable WS : Water Side CR : Crown		** Rating A : Acceptable M : Minimally Acceptable U : Unacceptable		N : Not Inspected/Rated C : Corrected A/W : Acceptable but Monitor & Maintain	+ Issue Type Ma : Maintenance Deficiency Ob : Design & System Obsolescence En : Enforcement
--	--	--	--	---	---

**Flood Control Project Maintenance
Levee Inspections**

Levee Inspection Report By Mile - Spring 2016

Sutter Maintenance Yard Maintenance Area 0005

Waterway	Bank	Unit Miles	Inspection Start/End	Inspector
Unit No. 01 Butte Creek	Left	15.08	05/05/2016 05/05/2016	Keith Millard

LM Start	11.85	Rating **	M	Issue No.	913
LM End	11.85	Issue Type +	En	Location *	LS
Category	Supplemental			GPS Latitude/Longitude	
				Start	End
Item	DWR UCIP Field Study			39.551212 °	39.551212 °
				-121.837724 °	-121.837724 °
DWR ID					
Comment Code					
Inspector Comment					
FS_ID:48314 DS_ID:1747 EP_NO: N/A Repair Type: Non-Urgent Crossing Status: Indicator Found UCIP Comments: 5/11/2016 Buried pipe.8/4/2015 Pipe is buried on both ends.Pipe burried on both LS and WS.5/29/2013 Same as last inspection.11/19/2013 Same as last inspection.6/11/2014 Same as last inspection. FIELD_STRUCT_DESC: 48" Corrugated Metal Pipe riser and sparling water meter/irrigation structure. 4-foot by 6-foot concrete outlet box on LS toe.(USACE 1952) FS Date: 5/25/2016 10:06:43 AM					

Photo 1 of 1 : UCIP_SP_2016_48314_68025.jpg



Buried pipe at concrete box, LS toe.

* Location LS : Land Side N/A : Not Applicable WS : Water Side CR : Crown	** Rating A : Acceptable M : Minimally Acceptable U : Unacceptable N : Not Inspected/Rated C : Corrected A/W : Acceptable but Monitor & Maintain	+ Issue Type Ma : Maintenance Deficiency Ob : Design & System Obsolescence En : Enforcement
--	---	---

**Flood Control Project Maintenance
Levee Inspections**

Levee Inspection Report By Mile - Spring 2016

Sutter Maintenance Yard Maintenance Area 0005

Waterway	Bank	Unit Miles	Inspection Start/End	Inspector
Unit No. 01 Butte Creek	Left	15.08	05/05/2016 05/05/2016	Keith Millard

LM Start	14.46	Rating **	M	Issue No.	907
LM End	14.46	Issue Type +	En	Location *	LS
Category	Supplemental			GPS Latitude/Longitude	
				Start	End
Item	DWR UCIP Field Study			39.522200 °	39.522200 °
				-121.865592 °	-121.865592 °
DWR ID					

Comment Code

Inspector Comment

FS_ID:48503
DS_ID:1639
EP_NO: N/A
Repair Type: Non-Urgent
Crossing Status: Found
UCIP Comments: 5/11/2016 Still no soil supporting the WS wing walls and apron. WS vegetation was thinner and not a problem this time.8/4/2015 No soil supporting the WS wing walls at the WS pipe end. WS pipe end is also being overgrown with vegetation and should be cleared back.6/11/2014 Same as last inspection.11/19/2013 Same as last inspection.5/29/2013 Same as last inspection.10/31/2012 Soil under Concrete wing walls on WS toe has been eroded. No soil supporting wing walls.
FIELD_STRUCT_DESC: 36-inch corrugated metal drainage pipe through the levee, 13.0 feet below the crown. Flap gate on the waterside (WS). Concrete headwall on landside (LS) and WS ends.
[Additional Reference(s): DWR Levee Logs, 1990. USACE Sacramento O&M Manual 515, April 1955 (Station 978+25)].
FS Date: 5/25/2016 10:08:00 AM

LM Start	14.46	Rating **	M	Issue No.	907 (cont)
LM End	14.46	Issue Type +	En	Location *	LS

Photo 1 of 2 : UCIP_SP_2016_48503_68033.jpg



Headwall at inlet on LS toe.

Photo 2 of 2 : UCIP_SP_2016_48503_68032.jpg



CMP pipe, flap gate, and headwall on WS toe.

* Location	** Rating	+ Issue Type
LS : Land Side WS : Water Side CR : Crown	A : Acceptable M : Minimally Acceptable U : Unacceptable	Ma : Maintenance Deficiency Ob : Design & System Obsolescence En : Enforcement
	N : Not Inspected/Rated C : Corrected A/W : Acceptable but Monitor & Maintain	

**Flood Control Project Maintenance
Levee Inspections**

Unit Cover Sheet

Spring 2016 Levee Inspection Results

Sutter Maintenance Yard Maintenance Area 0005

Waterway			Bank	Unit Miles
Unit No. 02 Butte Creek			Right	16.27
	Spring (March - May)	Summer (June - August)	(September - November) Fall	Winter (December - February)
Unit Maintenance Rating (Fall Only)				
Date of Inspection	5/5/2016 - 5/5/2016			
DWR Inspector	Keith Millard			
Accompanied By	Shawn Freitag Sutter Maintenance Yard			

Summer & Winter Inspections

The Local Maintaining Agency (LMA) is responsible for summer and winter inspections. The LMA is required to submit a report regarding summer and winter inspections to the California Department of Water Resources (DWR).

DWR must be informed on the:

- a) completion of the inspection
- b) any changes other than the results of normal maintenance
- c) corrections to deficiencies noted in this report

If additional items are noted, further documentation of those items must also be submitted.

The LMA should submit this information to DWR using the LMA web application tool available at:

<http://cdec.water.ca.gov/lma.html>

If the LMA is unable to submit information on this webpage, please contact DWR for assistance.

The LMA should submit the information and any associated documentation by September 30 for summer inspections and March 31 for winter inspections.

**Flood Control Project Maintenance
Levee Inspections**

Levee Inspection Report By Mile - Spring 2016

Sutter Maintenance Yard Maintenance Area 0005

Waterway	Bank	Unit Miles	Inspection Start/End	Inspector
Unit No. 02 Butte Creek	Right	16.27	05/05/2016 05/05/2016	Keith Millard

LM Start	1.21	Rating **	M	Issue No.	1
LM End	1.59	Issue Type +	En	Location *	LS
Category	Earthen Levee			GPS Latitude/Longitude	
				Start	End
Item	Encroachments			39.529933 °	39.534102 °
				-121.861563 °	-121.856947 °
DWR ID	DWR_MA0005_02_s_2012_1				
Comment Code					
DT : Ditch					
Inspector Comment					

Photo 1 of 1 : SP_2016_MA0005_197_1_20160321_00001.jpg



View of the agricultural ditch along the landside toe.

LM Start	1.91	Rating **	U	Issue No.	65
LM End	1.91	Issue Type +	En	Location *	LS
Category	Supplemental			GPS Latitude/Longitude	
				Start	End
Item	DWR UCIP Field Study			39.537455 °	39.537455 °
				-121.853061 °	-121.853061 °
DWR ID					
Comment Code					
Inspector Comment					
FS_ID:48520 DS_ID:1645 EP_NO: N/A Repair Type: Urgent Crossing Status: Found UCIP Comments: 5/23/2016 The tree that was overgrowing the WS flapgate has been removed. Flap gate was half buried and unable to open. Erosion on the LS is still present.7/28/2015 LS inlet is underwater but there appears to be erosion bhind the LS headwall. WS pipe end and flap gate are completely overgrown and inaccessible for inspection.11/25/2014 Tree is overgrowing the WS pipe outlet.. Needs to be trimmed back.6/4/2014 Same as last inspection.11/12/2013 Same as last inspection.6/6/2013 Same as last inspection.10/31/2012 Vegetation needs to be cleared from outlet. FIELD_STRUCT_DESC: 36-inch corrugated metal drainage pipe through the levee, 17.0 feet below the crown. Flap gate on the waterside (WS). Slide gate on landside (LS) toe. Concrete headwall at both LS and WS toes. [Additional Reference(s): DWR Levee Logs, 1990. USACE Sacramento O&M Manual 515 (Station 902+50)]. FS Date: 5/25/2016 12:44:00 PM					

Photo 1 of 2 : UCIP_SP_2016_48520_68498.jpg



Concrete headwall and slide gate on LS toe.

* Location LS : Land Side N/A : Not Applicable WS : Water Side CR : Crown	** Rating A : Acceptable M : Minimally Acceptable U : Unacceptable N : Not Inspected/Rated C : Corrected A/W : Acceptable but Monitor & Maintain	+ Issue Type Ma : Maintenance Deficiency Ob : Design & System Obsolescence En : Enforcement
--	---	---

**Flood Control Project Maintenance
Levee Inspections**

Levee Inspection Report By Mile - Spring 2016

Sutter Maintenance Yard Maintenance Area 0005

Waterway	Bank	Unit Miles	Inspection Start/End	Inspector
Unit No. 02 Butte Creek	Right	16.27	05/05/2016 05/05/2016	Keith Millard

LM Start	1.91	Rating **	U	Issue No.	65 (cont)	
LM End	1.91	Issue Type +	En	Location *	LS	
Category	Supplemental			GPS Latitude/Longitude		
				Start	End	
Item	DWR UCIP Field Study			39.537455 °	39.537455 °	
				-121.853061 °	-121.853061 °	
DWR ID						
Comment Code						
Inspector Comment						
FS_ID:48520 DS_ID:1645 EP_NO: N/A Repair Type: Urgent Crossing Status: Found UCIP Comments: 5/23/2016 The tree that was overgrowing the WS flapgate has been removed. Flap gate was half buried and unable to open. Erosion on the LS is still present.7/28/2015 LS inlet is underwater but there appears to be erosion bhind the LS headwall. WS pipe end and flap gate are completely overgrown and inaccessible for inspection.11/25/2014 Tree is overgrowing the WS pipe outlet.. Needs to be trimmed back.6/4/2014 Same as last inspection.11/12/2013 Same as last inspection.6/6/2013 Same as last inspection.10/31/2012 Vegetation needs to be cleared from outlet. FIELD_STRUCT_DESC: 36-inch corrugated metal drainage pipe through the levee, 17.0 feet below the crown. Flap gate on the waterside (WS). Slide gate on landside (LS) toe. Concrete headwall at both LS and WS toes. [Additional Reference(s): DWR Levee Logs, 1990. USACE Sacramento O&M Manual 515 (Station 902+50)]. FS Date: 5/25/2016 12:44:00 PM						

Photo 2 of 2 : UCIP_SP_2016_48520_68497.jpg



Flap gate on WS slope.

* Location LS : Land Side N/A : Not Applicable WS : Water Side CR : Crown		** Rating A : Acceptable N : Not Inspected/Rated M : Minimally Acceptable C : Corrected U : Unacceptable A/W : Acceptable but Monitor & Maintain		+ Issue Type Ma : Maintenance Deficiency Ob : Design & System Obsolescence En : Enforcement
--	--	---	--	---

**Flood Control Project Maintenance
Levee Inspections**

Levee Inspection Report By Mile - Spring 2016

Sutter Maintenance Yard Maintenance Area 0005

Waterway	Bank	Unit Miles	Inspection Start/End	Inspector
Unit No. 02 Butte Creek	Right	16.27	05/05/2016 05/05/2016	Keith Millard

LM Start	2.87	Rating **	M	Issue No.	66
LM End	2.87	Issue Type +	En	Location *	LS
Category	Supplemental			GPS Latitude/Longitude	
				Start	End
Item	DWR UCIP Field Study			39.549014 °	39.549014 °
				-121.842866 °	-121.842866 °
DWR ID					

Comment Code

Inspector Comment

FS_ID:48521
DS_ID:1646
EP_NO: 3927
Repair Type: Non-Urgent
Crossing Status: Found
UCIP Comments: 5/23/2016 Crossing appears to have been abandoned and removed. Could not locate the LS riser and siphon breaker.7/28/2015 No pump present during any of my inspections. Crossing appears abandoned. CMP riser has been knocked out of levee. 11/25/2014 Same as last inspection.6/04/2014 Same as last inspection.11/12/2013 Same as last inspection.6/6/2013 Same as last inspection.10/31/2012 Pump does not appear to be in use or is abandoned.
FIELD_STRUCT_DESC: 20-inch steel irrigation pipe through the levee, 2.4 feet below the crown. Siphon breaker in 24-inch corrugated metal riser on the landside (LS) shoulder. Portable pump on the waterside (WS). (Permit No. 3927, 1962 - Arrowhead Ranch).
FS Date: 5/25/2016 12:47:00 PM

LM Start	2.87	Rating **	M	Issue No.	66 (cont)
LM End	2.87	Issue Type +	En	Location *	LS

Photo 1 of 2 : UCIP_SP_2016_48521_68057.jpg



Air vent in 24-inch CMP riser on LS shoulder.

Photo 2 of 2 : UCIP_SP_2016_48521_68056.jpg



Pump on metal pier at WS toe.

* Location	** Rating	+ Issue Type
LS : Land Side WS : Water Side CR : Crown	A : Acceptable M : Minimally Acceptable U : Unacceptable	Ma : Maintenance Deficiency Ob : Design & System Obsolescence En : Enforcement
N/A : Not Applicable	N : Not Inspected/Rated C : Corrected A/W : Acceptable but Monitor & Maintain	

**Flood Control Project Maintenance
Levee Inspections**

Levee Inspection Report By Mile - Spring 2016

Sutter Maintenance Yard Maintenance Area 0005

Waterway	Bank	Unit Miles	Inspection Start/End	Inspector
Unit No. 02 Butte Creek	Right	16.27	05/05/2016 05/05/2016	Keith Millard

LM Start	3.10	Rating **	M	Issue No.	7
LM End	4.53	Issue Type +	En	Location *	LS
Category	Earthen Levee			GPS Latitude/Longitude	
				Start	End
Item	Encroachments			39.551780 °	39.567430 °
				-121.840507 °	-121.823065 °
DWR ID	DWR_MA0005_02_s_2012_7				
Comment Code					
DT : Ditch					
Inspector Comment					

Photo 1 of 1 : SP_2016_MA0005_197_7_20160321_00004.jpg



View of the agricultural ditch along the landside toe.

LM Start	4.09	Rating **	M	Issue No.	48
LM End	4.09	Issue Type +	En	Location *	LS
Category	Supplemental			GPS Latitude/Longitude	
				Start	End
Item	DWR UCIP Field Study			39.562875 °	39.562875 °
				-121.828782 °	-121.828782 °
DWR ID					
Comment Code					
Inspector Comment					
FS_ID:48347 DS_ID:16300 EP_NO: N/A Repair Type: Non-Urgent Crossing Status: Found UCIP Comments: 5/23/2016 Crossing is not abandoned. Water was flowing through from the LS to WS. LS pipe inlet is about 100 yds from LS levee toe across the LS canal.7/28/2015 Crossing is listed as abandoned but it is not filled with concrete like crossings 1-4 here.11/25/2014 Same as last inspection.6/04/2014 Same as last inspection.11/13/2013 Same as last inspection.6/6/2013 Sutter Maintenance Yard supervisor Jason Cooper said there is a flap gate on the LS end of the pipe in the western most ditch to prevent high water flooding. Not sure if this is adequate, will talk to levee inspector to find out.11/01/2012 Pipe open on WS and is not filled with concrete. FIELD_STRUCT_DESC: 5 of 5: 60-inch drainage (originally irrigation) pipe through the levee, 16.6 feet below the crown. Concrete headwall on landside (LS) and waterside (WS) shoulders. Pipe partially plugged on LS with concrete wall. Flap gate installed on concrete plug to allow floodwater from LS to flow to WS (Use changed after western canal realignment under Permit No. 16667, 1997 - Western Canal WD). O&M Manual 515, April 1955. FS Date: 5/25/2016 12:55:47 PM					

Photo 1 of 2 : UCIP_SP_2016_48347_68084.jpg



Concrete headwall on LS shoulder

* Location LS : Land Side N/A : Not Applicable WS : Water Side CR : Crown		** Rating A : Acceptable N : Not Inspected/Rated M : Minimally Acceptable C : Corrected U : Unacceptable A/W : Acceptable but Monitor & Maintain		+ Issue Type Ma : Maintenance Deficiency Ob : Design & System Obsolescence En : Enforcement
--	--	---	--	---

**Flood Control Project Maintenance
Levee Inspections**

Levee Inspection Report By Mile - Spring 2016

Sutter Maintenance Yard Maintenance Area 0005

Waterway	Bank	Unit Miles	Inspection Start/End	Inspector
Unit No. 02 Butte Creek	Right	16.27	05/05/2016 05/05/2016	Keith Millard

LM Start	4.09	Rating **	M	Issue No.	48 (cont)
LM End	4.09	Issue Type +	En	Location *	LS
Category	Supplemental			GPS Latitude/Longitude	
				Start	End
Item	DWR UCIP Field Study			39.562875 °	39.562875 °
				-121.828782 °	-121.828782 °
DWR ID					

Photo 2 of 2 : UCIP_SP_2016_48347_68083.jpg



Concrete headwall on WS shoulder.

Comment Code					
Inspector Comment					
FS_ID:48347 DS_ID:16300 EP_NO: N/A Repair Type: Non-Urgent Crossing Status: Found UCIP Comments: 5/23/2016 Crossing is not abandoned. Water was flowing through from the LS to WS. LS pipe inlet is about 100 yds from LS levee toe across the LS canal.7/28/2015 Crossing is listed as abandoned but it is not filled with concrete like crossings 1-4 here.11/25/2014 Same as last inspection.6/04/2014 Same as last inspection.11/13/2013 Same as last inspection.6/6/2013 Sutter Maintenance Yard supervisor Jason Cooper said there is a flap gate on the LS end of the pipe in the western most ditch to prevent high water flooding. Not sure if this is adequate, will talk to levee inspector to find out.11/01/2012 Pipe open on WS and is not filled with concrete. FIELD_STRUCT_DESC: 5 of 5: 60-inch drainage (originally irrigation) pipe through the levee, 16.6 feet below the crown. Concrete headwall on landside (LS) and waterside (WS) shoulders. Pipe partially plugged on LS with concrete wall. Flap gate installed on concrete plug to allow floodwater from LS to flow to WS (Use changed after western canal realignment under Permit No. 16667, 1997 - Western Canal WD). O&M Manual 515, April 1955. FS Date: 5/25/2016 12:55:47 PM					

* Location	** Rating	+ Issue Type
LS : Land Side WS : Water Side CR : Crown	A : Acceptable M : Minimally Acceptable U : Unacceptable	Ma : Maintenance Deficiency Ob : Design & System Obsolescence En : Enforcement
	N : Not Inspected/Rated C : Corrected A/W : Acceptable but Monitor & Maintain	

**Flood Control Project Maintenance
Levee Inspections**

Levee Inspection Report By Mile - Spring 2016

Sutter Maintenance Yard Maintenance Area 0005

Waterway	Bank	Unit Miles	Inspection Start/End	Inspector
Unit No. 02 Butte Creek	Right	16.27	05/05/2016 05/05/2016	Keith Millard

LM Start	5.35	Rating **	M	Issue No.	49
LM End	5.35	Issue Type +	En	Location *	LS
Category	Supplemental			GPS Latitude/Longitude	
				Start	End
Item	DWR UCIP Field Study			39.576008 °	39.576008 °
				-121.812599 °	-121.812599 °
DWR ID					
Comment Code					
Inspector Comment					
FS_ID:48353 DS_ID:1650 EP_NO: N/A Repair Type: Non-Urgent Crossing Status: Found UCIP Comments: 5/23/2016 Abandoned7/28/2015 Abandoned- still cannot locate a LS ans WS pipe end.Appears abandoned. Unable to locate outfall on WS. Unable to locate inlet on LS.6/6/2013 Same as last inspection.11/12/2013 Same as last inspection.6/04/2014 Same as last inspection.11/25/2014 Same as last inspection. FIELD_STRUCT_DESC: 24-inch corrugated metal pipe through the levee, 12.5 feet below the crown. Slide gate and flap gate in 56-inch cmp riser on WS berm. Flap gate on the waterward end. (USACE 1955) FS Date: 5/25/2016 1:21:09 PM					

Photo 1 of 2 : UCIP_SP_2016_48353_68105.jpg



Slide gate and flap gate inside CMP riser on WS berm.

LM Start	5.35	Rating **	M	Issue No.	49 (cont)
LM End	5.35	Issue Type +	En	Location *	LS

Photo 2 of 2 : UCIP_SP_2016_48353_68104.jpg



56-inch CMP riser on WS berm.

* Location LS : Land Side N/A : Not Applicable WS : Water Side CR : Crown		** Rating A : Acceptable N : Not Inspected/Rated M : Minimally Acceptable C : Corrected U : Unacceptable A/W : Acceptable but Monitor & Maintain		+ Issue Type Ma : Maintenance Deficiency Ob : Design & System Obsolescence En : Enforcement
--	--	---	--	---

**Flood Control Project Maintenance
Levee Inspections**

Levee Inspection Report By Mile - Spring 2016

Sutter Maintenance Yard Maintenance Area 0005

Waterway	Bank	Unit Miles	Inspection Start/End	Inspector
Unit No. 02 Butte Creek	Right	16.27	05/05/2016 05/05/2016	Keith Millard

LM Start	5.91	Rating **	M	Issue No.	34
LM End	5.91	Issue Type +	En	Location *	LS
Category	Earthen Levee			GPS Latitude/Longitude	
				Start	End
Item	Encroachments			39.583052 °	39.583052 °
				-121.807423 °	-121.807423 °
DWR ID	DWR_MA0005_02_s _ 2015_34				
Comment Code					
PR : Prunings					
Inspector Comment					
Remove the prunings from the landside toe.					

Photo 1 of 1 : SP_2016_MA0005_197_34_20160321_00013.jpg



View of the prunings along the landside toe.

LM Start	7.75	Rating **	M	Issue No.	35
LM End	7.75	Issue Type +	Ma	Location *	LS
Category	Earthen Levee			GPS Latitude/Longitude	
				Start	End
Item	Encroachments			39.605205 °	39.605205 °
				-121.788453 °	-121.788453 °
DWR ID	DWR_MA0005_02_s _ 2015_35				
Comment Code					
PR : Prunings					
Inspector Comment					
Remove the prunings from the landside slope.					

Photo 1 of 1 : SP_2016_MA0005_197_35_20160321_00014.jpg



View of the prunings along the landside slope.

LM Start	7.98	Rating **	M	Issue No.	13
LM End	7.98	Issue Type +	Ma	Location *	LS
Category	Earthen Levee			GPS Latitude/Longitude	
				Start	End
Item	Slope Stability			39.607710 °	39.607710 °
				-121.785868 °	-121.785868 °
DWR ID	DWR_MA0005_02_s _ 2012_13				
Comment Code					
S3 : Repair the levee slope damaged by vehicle traffic and prevent access where possible.					
Inspector Comment					

Photo 1 of 2 : SP_2016_MA0005_197_13_20160321_00005.jpg



View of the vehicle erosion along the landside slope.

* Location LS : Land Side N/A : Not Applicable WS : Water Side CR : Crown		** Rating A : Acceptable M : Minimally Acceptable U : Unacceptable		+ Issue Type Ma : Maintenance Deficiency Ob : Design & System Obsolescence En : Enforcement	
		N : Not Inspected/Rated C : Corrected A/W : Acceptable but Monitor & Maintain			

**Flood Control Project Maintenance
Levee Inspections**

Levee Inspection Report By Mile - Spring 2016

Sutter Maintenance Yard Maintenance Area 0005

Waterway	Bank	Unit Miles	Inspection Start/End	Inspector
Unit No. 02 Butte Creek	Right	16.27	05/05/2016 05/05/2016	Keith Millard

LM Start	7.98	Rating **	M	Issue No.	13 (cont)	
LM End	7.98	Issue Type +	Ma	Location *	LS	
Category	Earthen Levee			GPS Latitude/Longitude		
				Start		End
Item	Slope Stability			39.607710 °		39.607710 °
				-121.785868 °		-121.785868 °
DWR ID	DWR_MA0005_02_s_2012_13					
Comment Code						
S3 : Repair the levee slope damaged by vehicle traffic and prevent access where possible.						
Inspector Comment						

Photo 2 of 2 : SP_2016_MA0005_197_13_20160321_00006.jpg



View of the vehicle erosion along the slope.

LM Start	8.00	Rating **	M	Issue No.	50
LM End	8.00	Issue Type +	En	Location *	LS
Category	Supplemental			GPS Latitude/Longitude	
				Start	End
Item	DWR UCIP Field Study			39.607802 °	39.607802 °
				-121.785597 °	-121.785597 °
DWR ID					
Comment Code					
Inspector Comment					
FS_ID:48363					
DS_ID:1656					
EP_NO: N/A					
Repair Type: Non-Urgent					
Crossing Status: Found					
UCIP Comments: 5/23/2016 LS end is almost completel full of soil.7/28/2015 Pipe is still over 3/4 full of soil. Pipe 3/4 full with soil on LS.6/6/2013 Same as last inspection.11/12/2013 Same as last inspection.6/04/2014 Same as last inspection.11/24/2014 Same as last inspection.					
FIELD_STRUCT_DESC: 24-inch corrugated metal pipe through the levee, 6.7 feet below the crown. Concrete headwall at the landward toe.					
Flap gate on the waterward end. (USACE 1955)					
FS Date: 5/25/2016 1:29:18 PM					

Photo 1 of 2 : UCIP_SP_2016_48363_68129.jpg



Flap gate at WS toe.

* Location LS : Land Side N/A : Not Applicable WS : Water Side CR : Crown	** Rating A : Acceptable M : Minimally Acceptable U : Unacceptable	N : Not Inspected/Rated C : Corrected A/W : Acceptable but Monitor & Maintain	+ Issue Type Ma : Maintenance Deficiency Ob : Design & System Obsolescence En : Enforcement
--	--	---	---

**Flood Control Project Maintenance
Levee Inspections**

Levee Inspection Report By Mile - Spring 2016

Sutter Maintenance Yard Maintenance Area 0005

Waterway	Bank	Unit Miles	Inspection Start/End	Inspector
Unit No. 02 Butte Creek	Right	16.27	05/05/2016 05/05/2016	Keith Millard

LM Start	8.00	Rating **	M	Issue No.	50 (cont)	
LM End	8.00	Issue Type +	En	Location *	LS	
Category	Supplemental			GPS Latitude/Longitude		
				Start		End
Item	DWR UCIP Field Study			39.607802 °	39.607802 °	
				-121.785597 °	-121.785597 °	
DWR ID						
Comment Code						
Inspector Comment						
FS_ID:48363						
DS_ID:1656						
EP_NO: N/A						
Repair Type: Non-Urgent						
Crossing Status: Found						
UCIP Comments: 5/23/2016 LS end is almost completel full of soil.7/28/2015 Pipe is still over 3/4 full of soil. Pipe 3/4 full with soil on LS.6/6/2013 Same as last inspection.11/12/2013 Same as last inspection.6/04/2014 Same as last inspection.11/24/2014 Same as last inspection.						
FIELD_STRUCT_DESC: 24-inch corrugated metal pipe through the levee, 6.7 feet below the crown. Concrete headwall at the landward toe. Flap gate on the waterward end. (USACE 1955)						
FS Date: 5/25/2016 1:29:18 PM						

Photo 2 of 2 : UCIP_SP_2016_48363_68128.jpg



Concrete headwall on LS toe.

LM Start	8.06	Rating **	M	Issue No.	40
LM End	8.06	Issue Type +	Ma	Location *	LS
Category	Earthen Levee			GPS Latitude/Longitude	
				Start	End
Item	Slope Stability			39.608563 °	39.608563 °
				-121.785058 °	-121.785058 °
DWR ID	DWR_MA0005_02_f_2014_40				
Comment Code					
S3 : Repair the levee slope damaged by vehicle traffic and prevent access where possible.					
Inspector Comment					

Photo 1 of 1 : SP_2016_MA0005_197_40_20160321_00016.jpg



View of the vehicle slope instability along the landside slope.

* Location LS : Land Side N/A : Not Applicable WS : Water Side CR : Crown		** Rating A : Acceptable M : Minimally Acceptable U : Unacceptable		N : Not Inspected/Rated C : Corrected A/W : Acceptable but Monitor & Maintain		+ Issue Type Ma : Maintenance Deficiency Ob : Design & System Obsolescence En : Enforcement	
--	--	--	--	---	--	---	--

**Flood Control Project Maintenance
Levee Inspections**

Levee Inspection Report By Mile - Spring 2016

Sutter Maintenance Yard Maintenance Area 0005

Waterway	Bank	Unit Miles	Inspection Start/End	Inspector
Unit No. 02 Butte Creek	Right	16.27	05/05/2016 05/05/2016	Keith Millard

LM Start	8.67	Rating **	M	Issue No.	47
LM End	8.67	Issue Type +	En	Location *	LS
Category	Earthen Levee			GPS Latitude/Longitude	
				Start	End
Item	Encroachments			39.616370 °	39.616370 °
				-121.779779 °	-121.779779 °
DWR ID	DWR_MA0005_02_s _ 2016_47				
Comment Code					
PR : Prunings					
Inspector Comment					

No Photos

LM Start	8.77	Rating **	M	Issue No.	46
LM End	8.77	Issue Type +	En	Location *	LS
Category	Earthen Levee			GPS Latitude/Longitude	
				Start	End
Item	Encroachments			39.617750 °	39.617750 °
				-121.778981 °	-121.778981 °
DWR ID	DWR_MA0005_02_s _ 2016_46				
Comment Code					
PR : Prunings					
Inspector Comment					

Photo 1 of 1 : SP_2016_MA0005_197_46_20160509_00067.jpg



5/5/2016: Remove prunings from L/S toe.

* Location LS : Land Side N/A : Not Applicable WS : Water Side CR : Crown		** Rating A : Acceptable N : Not Inspected/Rated M : Minimally Acceptable C : Corrected U : Unacceptable A/W : Acceptable but Monitor & Maintain		+ Issue Type Ma : Maintenance Deficiency Ob : Design & System Obsolescence En : Enforcement
--	--	---	--	---

**Flood Control Project Maintenance
Levee Inspections**

Levee Inspection Report By Mile - Spring 2016

Sutter Maintenance Yard Maintenance Area 0005

Waterway	Bank	Unit Miles	Inspection Start/End	Inspector
Unit No. 02 Butte Creek	Right	16.27	05/05/2016 05/05/2016	Keith Millard

LM Start	8.80	Rating **	M	Issue No.	51	
LM End	8.80	Issue Type +	En	Location *	LS	
Category	Supplemental			GPS Latitude/Longitude		
				Start		End
Item	DWR UCIP Field Study			39.618163 °		39.618163 °
				-121.778745 °		-121.778745 °
DWR ID						
Comment Code						
Inspector Comment						
FS_ID:48373						
DS_ID:1664						
EP_NO: N/A						
Repair Type: Non-Urgent						
Crossing Status: Found						
UCIP Comments: 5/12/2016 LS inlet was unburied. Slide gate still missing7/30/2015 LS inlet is still buried.LS inlet is buried under soil and covered with brambles. Slide gate missing from LS.6/6/2013 Same as last inspection.11/13/2013 Same as last inspection.6/4/2014 Same as last inspection.11/24/2014 Same as last inspection.						
FIELD_STRUCT_DESC: 24-inch pipe through the levee, 12.0 feet below the crown. Flap gate on waterward end. Concrete headwall on the waterward end. (USACE 1957)						
FS Date: 5/25/2016 1:38:38 PM						

Photo 1 of 2 : UCIP_SP_2016_48373_68406.jpg



WS outlet and concrete U shaped headwall.

LM Start	8.80	Rating **	M	Issue No.	51 (cont)
LM End	8.80	Issue Type +	En	Location *	LS

Photo 2 of 2 : UCIP_SP_2016_48373_68404.jpg



Brambles and soil over pipe at inlet.

* Location LS : Land Side N/A : Not Applicable WS : Water Side CR : Crown	** Rating A : Acceptable M : Minimally Acceptable U : Unacceptable	N : Not Inspected/Rated C : Corrected A/W : Acceptable but Monitor & Maintain	+ Issue Type Ma : Maintenance Deficiency Ob : Design & System Obsolescence En : Enforcement
--	--	---	---

**Flood Control Project Maintenance
Levee Inspections**

Levee Inspection Report By Mile - Spring 2016

Sutter Maintenance Yard Maintenance Area 0005

Waterway	Bank	Unit Miles	Inspection Start/End	Inspector
Unit No. 02 Butte Creek	Right	16.27	05/05/2016 05/05/2016	Keith Millard

LM Start	9.09	Rating **	M	Issue No.	45
LM End	9.09	Issue Type +	En	Location *	LS
Category	Earthen Levee			GPS Latitude/Longitude	
				Start	End
Item	Encroachments			39.622017 °	39.622017 °
				-121.776552 °	-121.776552 °
DWR ID	DWR_MA0005_02_s_2016_45				
Comment Code					
EQ : Equipment					
Inspector Comment					

Photo 1 of 1 : SP_2016_MA0005_197_45_20160509_00066.jpg



5/5/2016: Remove equipment and materials from L/S toe.

LM Start	9.44	Rating **	M	Issue No.	52
LM End	9.44	Issue Type +	En	Location *	LS
Category	Supplemental			GPS Latitude/Longitude	
				Start	End
Item	DWR UCIP Field Study			39.626894 °	39.626894 °
				-121.775180 °	-121.775180 °
DWR ID					
Comment Code					
Inspector Comment					
FS_ID:48375 DS_ID:1666 EP_NO: N/A Repair Type: Non-Urgent Crossing Status: Found UCIP Comments: 5/12/2016 Pipe is half full of soil.7/30/2015 Pipe is 1/4 to 1/2 full of soil still.Pipe 1/2 filled with soil.6/6/2013 Same as last inspection.11/13/2013 Same as last inspection.6/4/2014 Same as last inspection.11/24/2014 Same as last inspection. FIELD_STRUCT_DESC: 24-inch corrugated metal storm drain pipe through the levee, 11.2 feet below the crown. Flap gate on waterward end. Concrete "U" shaped headwalls on both ends. (USCE 1957) FS Date: 5/25/2016 1:47:47 PM					

Photo 1 of 2 : UCIP_SP_2016_48375_68417.jpg



View of outlet looking toward WS toe.

* Location LS : Land Side N/A : Not Applicable WS : Water Side CR : Crown	** Rating A : Acceptable M : Minimally Acceptable U : Unacceptable	N : Not Inspected/Rated C : Corrected A/W : Acceptable but Monitor & Maintain	+ Issue Type Ma : Maintenance Deficiency Ob : Design & System Obsolescence En : Enforcement
--	--	---	---

**Flood Control Project Maintenance
Levee Inspections**

Levee Inspection Report By Mile - Spring 2016

Sutter Maintenance Yard Maintenance Area 0005

Waterway	Bank	Unit Miles	Inspection Start/End	Inspector
Unit No. 02 Butte Creek	Right	16.27	05/05/2016 05/05/2016	Keith Millard

LM Start	9.44	Rating **	M	Issue No.	52 (cont)	
LM End	9.44	Issue Type +	En	Location *	LS	
Category	Supplemental			GPS Latitude/Longitude		
				Start		End
Item	DWR UCIP Field Study			39.626894 °		39.626894 °
				-121.775180 °		-121.775180 °
DWR ID						
Comment Code						
Inspector Comment						
FS_ID:48375						
DS_ID:1666						
EP_NO: N/A						
Repair Type: Non-Urgent						
Crossing Status: Found						
UCIP Comments: 5/12/2016 Pipe is half full of soil.7/30/2015 Pipe is 1/4 to 1/2 full of soil still.Pipe 1/2 filled with soil.6/6/2013 Same as last inspection.11/13/2013 Same as last inspection.6/4/2014 Same as last inspection.11/24/2014 Same as last inspection.						
FIELD_STRUCT_DESC: 24-inch corrugated metal storm drain pipe through the levee, 11.2 feet below the crown. Flap gate on waterward end. Concrete "U" shaped headwalls on both ends. (USCE 1957)						
FS Date: 5/25/2016 1:47:47 PM						

Photo 2 of 2 : UCIP_SP_2016_48375_68416.jpg



View of inlet on LS toe.

LM Start	10.38	Rating **	M	Issue No.	3
LM End	10.38	Issue Type +	En	Location *	LS
Category	Earthen Levee			GPS Latitude/Longitude	
				Start	End
Item	Encroachments			39.639018 °	39.639018 °
				-121.781458 °	-121.781458 °
DWR ID	DWR_MA0005_02_s_2012_3				
Comment Code					
PR : Prunings					
Inspector Comment					

Photo 1 of 1 : SP_2016_MA0005_197_3_20160321_00002.jpg



View of the prunings along the landside toe.

* Location LS : Land Side N/A : Not Applicable WS : Water Side CR : Crown	** Rating A : Acceptable M : Minimally Acceptable U : Unacceptable	N : Not Inspected/Rated C : Corrected A/W : Acceptable but Monitor & Maintain	+ Issue Type Ma : Maintenance Deficiency Ob : Design & System Obsolescence En : Enforcement
--	--	---	---

**Flood Control Project Maintenance
Levee Inspections**

Levee Inspection Report By Mile - Spring 2016

Sutter Maintenance Yard Maintenance Area 0005

Waterway	Bank	Unit Miles	Inspection Start/End	Inspector
Unit No. 02 Butte Creek	Right	16.27	05/05/2016 05/05/2016	Keith Millard

LM Start	10.46	Rating **	M	Issue No.	14
LM End	10.46	Issue Type +	En	Location *	LS
Category	Earthen Levee			GPS Latitude/Longitude	
				Start	End
Item	Encroachments			39.639967 °	39.639967 °
				-121.782152 °	-121.782152 °
DWR ID	DWR_MA0005_02_s _ 2012_14				
Comment Code					
EQ : Equipment					
Inspector Comment					

Photo 1 of 1 : SP_2016_MA0005_197_14_20160321_00007.jpg



View of the equipment along the Landside toe.

LM Start	10.63	Rating **	M	Issue No.	18
LM End	10.63	Issue Type +	Ma	Location *	LS
Category	Earthen Levee			GPS Latitude/Longitude	
				Start	End
Item	Slope Stability			39.642061 °	39.642061 °
				-121.783861 °	-121.783861 °
DWR ID	DWR_MA0005_02_s _ 2012_18				
Comment Code					
S3 : Repair the levee slope damaged by vehicle traffic and prevent access where possible.					
Inspector Comment					

Photo 1 of 1 : SP_2016_MA0005_197_18_20160321_00008.jpg



View of the vehicle erosion along the slope of the levee.

LM Start	10.79	Rating **	C	Issue No.	21
LM End	10.82	Issue Type +	En	Location *	LS
Category	Earthen Levee			GPS Latitude/Longitude	
				Start	End
Item	Encroachments			39.644076 °	39.644480 °
				-121.785471 °	-121.785762 °
DWR ID	DWR_MA0005_02_s _ 2013_21				
Comment Code					
TR : Tree or limb					
Inspector Comment					

No Photos

* Location		** Rating		+ Issue Type	
LS : Land Side	N/A : Not Applicable	A : Acceptable	N : Not Inspected/Rated	Ma : Maintenance Deficiency	
WS : Water Side		M : Minimally Acceptable	C : Corrected	Ob : Design & System Obsolescence	
CR : Crown		U : Unacceptable	A/W : Acceptable but Monitor & Maintain	En : Enforcement	

**Flood Control Project Maintenance
Levee Inspections**

Levee Inspection Report By Mile - Spring 2016

Sutter Maintenance Yard Maintenance Area 0005

Waterway	Bank	Unit Miles	Inspection Start/End	Inspector
Unit No. 02 Butte Creek	Right	16.27	05/05/2016 05/05/2016	Keith Millard

LM Start	10.89	Rating **	U	Issue No.	41
LM End	10.93	Issue Type +	En	Location *	LS
Category	Earthen Levee			GPS Latitude/Longitude	
				Start	End
Item	Encroachments			39.645318 °	39.645858 °
				-121.786345 °	-121.786742 °
DWR ID	DWR_MA0005_02_f _ 2014_41				
Comment Code					
FE : Fence					
Inspector Comment					
Remove or apply for permit for the fence along landside toe					

Photo 1 of 1 : SP_2016_MA0005_197_41_20160321_00017.jpg



View of the new fence along the landside toe.

LM Start	11.05	Rating **	M	Issue No.	26
LM End	11.05	Issue Type +	Ma	Location *	LS
Category	Earthen Levee			GPS Latitude/Longitude	
				Start	End
Item	Vegetation			39.647400 °	39.647400 °
				-121.787825 °	-121.787825 °
DWR ID	DWR_MA0005_02_f_2012_26				
Comment Code					
V4 : Elderberries are blocking visibility and flood fight capability.					
Inspector Comment					

No Photos

LM Start	11.10	Rating **	U	Issue No.	36
LM End	11.10	Issue Type +	Ma	Location *	LS
Category	Earthen Levee			GPS Latitude/Longitude	
				Start	End
Item	Encroachments			39.647913 °	39.647913 °
				-121.788330 °	-121.788330 °
DWR ID	DWR_MA0005_02_s_2015_36				
Comment Code					
TR : Tree or limb					
Inspector Comment					
Fallen tree has been trimmed back since Spring 2015 inspection, but large pieces still remain which should be removed.					

Photo 1 of 1 : SP_2016_MA0005_197_36_20160321_00015.jpg



Remove the tree from the landside slope.

* Location LS : Land Side N/A : Not Applicable WS : Water Side CR : Crown		** Rating A : Acceptable M : Minimally Acceptable U : Unacceptable N : Not Inspected/Rated C : Corrected A/W : Acceptable but Monitor & Maintain		+ Issue Type Ma : Maintenance Deficiency Ob : Design & System Obsolescence En : Enforcement	
--	--	---	--	---	--

**Flood Control Project Maintenance
Levee Inspections**

Levee Inspection Report By Mile - Spring 2016

Sutter Maintenance Yard Maintenance Area 0005

Waterway	Bank	Unit Miles	Inspection Start/End	Inspector
Unit No. 02 Butte Creek	Right	16.27	05/05/2016 05/05/2016	Keith Millard

LM Start	11.12	Rating **	M	Issue No.	53
LM End	11.12	Issue Type +	En	Location *	LS
Category	Supplemental			GPS Latitude/Longitude	
				Start	End
Item	DWR UCIP Field Study			39.648169 °	39.648169 °
				-121.788541 °	-121.788541 °
DWR ID					
Comment Code					
Inspector Comment					
FS_ID:48389					
DS_ID:1670					
EP_NO: N/A					
Repair Type: Non-Urgent					
Crossing Status: Found					
UCIP Comments: 5/11/2016 Crossing appears to be in good condition.7/30/2015 Crossing appears in good condition. No noticeable issues to report.6/6/2013 New flap gate installed on WS end of pipe.11/13/2013 Same as last inspection.6/4/2014 Same as last inspection.11/24/2014 Same as last inspection.					
FIELD_STRUCT_DESC: 24-inch corrugated metal pipe through the levee, 9.7 feet below the crown. Slide gate in corrugated metal riser on the waterward slope. Flap gate on WS toe. Slide gate in concrete distribution box on the landward side. (USCE 1958)					
FS Date: 5/25/2016 2:20:26 PM					

Photo 1 of 2 : UCIP_SP_2016_48389_68429.jpg



CM riser on WS shoulder-missing slide gate.

LM Start	11.12	Rating **	M	Issue No.	53 (cont)
LM End	11.12	Issue Type +	En	Location *	LS

Photo 2 of 2 : UCIP_SP_2016_48389_68433.jpg



Distribution box on LS toe. Missing slide gate at pipe entrance.

* Location LS : Land Side N/A : Not Applicable WS : Water Side CR : Crown		** Rating A : Acceptable N : Not Inspected/Rated M : Minimally Acceptable C : Corrected U : Unacceptable A/W : Acceptable but Monitor & Maintain		+ Issue Type Ma : Maintenance Deficiency Ob : Design & System Obsolescence En : Enforcement
--	--	---	--	---

**Flood Control Project Maintenance
Levee Inspections**

Levee Inspection Report By Mile - Spring 2016

Sutter Maintenance Yard Maintenance Area 0005

Waterway	Bank	Unit Miles	Inspection Start/End	Inspector
Unit No. 02 Butte Creek	Right	16.27	05/05/2016 05/05/2016	Keith Millard

LM Start	11.12	Rating **	M	Issue No.	54
LM End	11.12	Issue Type +	En	Location *	LS
Category	Supplemental			GPS Latitude/Longitude	
				Start	End
Item	DWR UCIP Field Study			39.648185 °	39.648185 °
				-121.788563 °	-121.788563 °
DWR ID					
Comment Code					
Inspector Comment					
FS_ID:48390 DS_ID:1671 EP_NO: N/A Repair Type: Non-Urgent Crossing Status: Found UCIP Comments: 5/11/2016 Abandoned crossing7/30/2015 Abandoned crossing. Unable to locate the WS end of pipe.Pipe appears abandoned. It needs to be abandoned properly.6/6/2013 Same as last inspection.11/13/2013 Same as last inspection.6/4/2014 Same as last inspection.11/24/2014 Same as last inspection. FIELD_STRUCT_DESC: 30-inch corrugated metal siphon through the levee, 9.4 feet below the crown. Slide gate in 42-inch corrugated metal riser on the waterward slope. Concrete distribution box on the landward side. (USCE 1958) FS Date: 5/25/2016 2:21:45 PM					

LM Start	11.12	Rating **	M	Issue No.	54 (cont)
LM End	11.12	Issue Type +	En	Location *	LS

Photo 1 of 2 : UCIP_SP_2016_48390_68436.jpg



Pipe at concrete distribution box on LS toe.

Photo 2 of 2 : UCIP_SP_2016_48390_68435.jpg



CM riser with slide gate on WS shoulder.

* Location		** Rating		+ Issue Type	
LS : Land Side	N/A : Not Applicable	A : Acceptable	N : Not Inspected/Rated	Ma : Maintenance Deficiency	
WS : Water Side		M : Minimally Acceptable	C : Corrected	Ob : Design & System Obsolescence	
CR : Crown		U : Unacceptable	A/W : Acceptable but Monitor & Maintain	En : Enforcement	

**Flood Control Project Maintenance
Levee Inspections**

Levee Inspection Report By Mile - Spring 2016

Sutter Maintenance Yard Maintenance Area 0005

Waterway	Bank	Unit Miles	Inspection Start/End	Inspector
Unit No. 02 Butte Creek	Right	16.27	05/05/2016 05/05/2016	Keith Millard

LM Start	11.57	Rating **	M	Issue No.	6
LM End	11.77	Issue Type +	En	Location *	LS
Category	Earthen Levee			GPS Latitude/Longitude	
				Start	End
Item	Encroachments			39.654268 °	39.657142 °
				-121.789525 °	-121.788690 °
DWR ID	DWR_MA0005_02_s_2012_6				
Comment Code					
DT : Ditch					
Inspector Comment					

Photo 1 of 1 : SP_2016_MA0005_197_6_20160321_00003.jpg



View of the ditch along the Landside toe.

LM Start	12.06	Rating **	M	Issue No.	55
LM End	12.06	Issue Type +	En	Location *	LS
Category	Supplemental			GPS Latitude/Longitude	
				Start	End
Item	DWR UCIP Field Study			39.660980 °	39.660980 °
				-121.786341 °	-121.786341 °
DWR ID					
Comment Code					
Inspector Comment					
FS_ID:48391 DS_ID:1672 EP_NO: N/A Repair Type: Non-Urgent Crossing Status: Found UCIP Comments: 5/11/2016 Crossing appears to be in good condition.7/30/2015 Crossing is not abandoned. Water was flowing through the standpipe on the WS shoulder. Unable to locate the source of the water or where it was flowing to.This pipe appears to be abandoned.6/6/2013 Same as last inspection.11/13/2013 Same as last inspection.6/4/2014 Same as last inspection.11/24/2014 Same as last inspection. FIELD_STRUCT_DESC: 30-inch siphon pipe through the levee, 12.3 feet below the crown. Slide gate in 42-inch corrugated metal riser on the waterward slope. 5-foot X 5-foot Concrete distribution box at LS toe. (USCAE 1958) FS Date: 5/25/2016 2:22:33 PM					

Photo 1 of 2 : UCIP_SP_2016_48391_68439.jpg



5X5 concrete distribution box at LS toe.

* Location LS : Land Side N/A : Not Applicable WS : Water Side CR : Crown		** Rating A : Acceptable M : Minimally Acceptable U : Unacceptable N : Not Inspected/Rated C : Corrected A/W : Acceptable but Monitor & Maintain		+ Issue Type Ma : Maintenance Deficiency Ob : Design & System Obsolescence En : Enforcement
--	--	---	--	---

**Flood Control Project Maintenance
Levee Inspections**

Levee Inspection Report By Mile - Spring 2016

Sutter Maintenance Yard Maintenance Area 0005

Waterway	Bank	Unit Miles	Inspection Start/End	Inspector
Unit No. 02 Butte Creek	Right	16.27	05/05/2016 05/05/2016	Keith Millard

LM Start	12.06	Rating **	M	Issue No.	55 (cont)	
LM End	12.06	Issue Type +	En	Location *	LS	
Category	Supplemental			GPS Latitude/Longitude		
				Start		End
Item	DWR UCIP Field Study			39.660980 °		39.660980 °
				-121.786341 °		-121.786341 °
DWR ID						
Comment Code						
Inspector Comment						
FS_ID:48391 DS_ID:1672 EP_NO: N/A Repair Type: Non-Urgent Crossing Status: Found UCIP Comments: 5/11/2016 Crossing appears to be in good condition.7/30/2015 Crossing is not abandoned. Water was flowing through the standpipe on the WS shoulder. Unable to locate the source of the water or where it was flowing to.This pipe appears to be abandoned.6/6/2013 Same as last inspection.11/13/2013 Same as last inspection.6/4/2014 Same as last inspection.11/24/2014 Same as last inspection. FIELD_STRUCT_DESC: 30-inch siphon pipe through the levee, 12.3 feet below the crown. Slide gate in 42-inch corrugated metal riser on the waterward slope. 5-foot X 5-foot Concrete distribution box at LS toe. (USCAE 1958) FS Date: 5/25/2016 2:22:33 PM						

Photo 2 of 2 : UCIP_SP_2016_48391_68438.jpg



42-inch CMP riser on WS shoulder with slide gate.

* Location LS : Land Side N/A : Not Applicable WS : Water Side CR : Crown	** Rating A : Acceptable M : Minimally Acceptable U : Unacceptable N : Not Inspected/Rated C : Corrected A/W : Acceptable but Monitor & Maintain	+ Issue Type Ma : Maintenance Deficiency Ob : Design & System Obsolescence En : Enforcement
--	---	---

**Flood Control Project Maintenance
Levee Inspections**

Levee Inspection Report By Mile - Spring 2016

Sutter Maintenance Yard Maintenance Area 0005

Waterway	Bank	Unit Miles	Inspection Start/End	Inspector
Unit No. 02 Butte Creek	Right	16.27	05/05/2016 05/05/2016	Keith Millard

LM Start	12.83	Rating **	M	Issue No.	19
LM End	12.83	Issue Type +	En	Location *	LS
Category	Earthen Levee			GPS Latitude/Longitude	
				Start	End
Item	Encroachments			39.671239 °	39.671239 °
				-121.782486 °	-121.782486 °
DWR ID	DWR_MA0005_02_s _ 2012_19				
Comment Code					
PR : Prunings					
Inspector Comment					

Photo 1 of 1 : SP_2016_MA0005_197_19_20160321_00009.jpg



View of the brush pile at the toe of the levee.

LM Start	13.02	Rating **	M	Issue No.	44
LM End	13.02	Issue Type +	En	Location *	LS
Category	Earthen Levee			GPS Latitude/Longitude	
				Start	End
Item	Encroachments			39.673685 °	39.673685 °
				-121.781313 °	-121.781313 °
DWR ID	DWR_MA0005_02_s _ 2016_44				
Comment Code					
FW : Firewood					
Inspector Comment					

No Photos

LM Start	13.04	Rating **	M	Issue No.	5
LM End	13.04	Issue Type +	En	Location *	LS
Category	Earthen Levee			GPS Latitude/Longitude	
				Start	End
Item	Encroachments			39.673956 °	39.673956 °
				-121.781278 °	-121.781278 °
DWR ID	DWR_MA0005_02_s _ 2012_5				
Comment Code					
EQ : Equipment					
Inspector Comment					

No Photos

* Location LS : Land Side N/A : Not Applicable WS : Water Side CR : Crown		** Rating A : Acceptable N : Not Inspected/Rated M : Minimally Acceptable C : Corrected U : Unacceptable A/W : Acceptable but Monitor & Maintain		+ Issue Type Ma : Maintenance Deficiency Ob : Design & System Obsolescence En : Enforcement	
--	--	---	--	---	--

**Flood Control Project Maintenance
Levee Inspections**

Levee Inspection Report By Mile - Spring 2016

Sutter Maintenance Yard Maintenance Area 0005

Waterway	Bank	Unit Miles	Inspection Start/End	Inspector
Unit No. 02 Butte Creek	Right	16.27	05/05/2016 05/05/2016	Keith Millard

LM Start	13.06	Rating **	M	Issue No.	42
LM End	13.06	Issue Type +	En	Location *	LS
Category	Earthen Levee			GPS Latitude/Longitude	
				Start	End
Item	Encroachments			39.674219 °	39.674219 °
				-121.781188 °	-121.781188 °
DWR ID	DWR_MA0005_02_s _ 2016_42				
Comment Code					
FW : Firewood					
Inspector Comment					

Photo 1 of 1 : SP_2016_MA0005_197_42_20160509_00064.jpg



5/5/2016: Remove firewood pile from L/S slope.

LM Start	13.15	Rating **	M	Issue No.	22
LM End	13.15	Issue Type +	En	Location *	WS
Category	Earthen Levee			GPS Latitude/Longitude	
				Start	End
Item	Encroachments			39.675311 °	39.675311 °
				-121.780371 °	-121.780371 °
DWR ID	DWR_MA0005_02_s _ 2013_22				
Comment Code					
PR : Prunings					
Inspector Comment					

Photo 1 of 1 : SP_2016_MA0005_197_22_20160321_00011.jpg



View of the prunings along the waterside toe.

* Location LS : Land Side N/A : Not Applicable WS : Water Side CR : Crown		** Rating A : Acceptable N : Not Inspected/Rated M : Minimally Acceptable C : Corrected U : Unacceptable A/W : Acceptable but Monitor & Maintain		+ Issue Type Ma : Maintenance Deficiency Ob : Design & System Obsolescence En : Enforcement
--	--	---	--	---

**Flood Control Project Maintenance
Levee Inspections**

Levee Inspection Report By Mile - Spring 2016

Sutter Maintenance Yard Maintenance Area 0005

Waterway	Bank	Unit Miles	Inspection Start/End	Inspector
Unit No. 02 Butte Creek	Right	16.27	05/05/2016 05/05/2016	Keith Millard

LM Start	13.15	Rating **	M	Issue No.	57
LM End	13.15	Issue Type +	En	Location *	WS
Category	Supplemental			GPS Latitude/Longitude	
				Start	End
Item	DWR UCIP Field Study			39.675379 °	39.675379 °
				-121.780319 °	-121.780319 °
DWR ID					
Comment Code					
Inspector Comment					
FS_ID:48393 DS_ID:1674 EP_NO: 1291 Repair Type: Non-Urgent Crossing Status: Found UCIP Comments: 5/11/2016 Appears to be an abandoned crossing.8/3/2015 Pipe appears to be abandoned. Pump on WS berm is still missing.Pipe appears to be abandoned. No pump found. Pipe should be abandoned properly.6/6/2013 Same as last inspection.11/13/2013 Same as last inspection.6/4/2014 Same as last inspection.11/24/2014 Same as last inspection. FIELD_STRUCT_DESC: 24-inch pipe through the levee, 9.0 feet below the crown. Slide gate in 36-inch corrugated metal riser on the waterward slope. Pump and 36-inch concrete standpipe on the waterward berm. (USCE 1958) Originally installed under Permit No. 1291, 1948 and described as a 14-inch concrete pipe. FS Date: 5/25/2016 2:24:10 PM					

Photo 1 of 1 : UCIP_SP_2016_48393_68488.jpg



Slide gate in CM riser on WS toe.

* Location LS : Land Side N/A : Not Applicable WS : Water Side CR : Crown		** Rating A : Acceptable N : Not Inspected/Rated M : Minimally Acceptable C : Corrected U : Unacceptable A/W : Acceptable but Monitor & Maintain		+ Issue Type Ma : Maintenance Deficiency Ob : Design & System Obsolescence En : Enforcement
--	--	---	--	---

Levee Inspection Report By Mile - Spring 2016

Waterway	Bank	Unit Miles	Inspection Start/End	Inspector
Unit No. 02 Butte Creek	Right	16.27	05/05/2016 05/05/2016	Keith Millard

LM Start	13.54	Rating **	M	Issue No.	39
LM End	13.54	Issue Type +	En	Location *	LS
Category	Earthen Levee			GPS Latitude/Longitude	
				Start	End
Item	Encroachments			39.680605 °	39.680605 °
				-121.778253 °	-121.778253 °
DWR ID	DWR_MA0005_02_s _ 2016_39				
Comment Code					
PR : Prunings					
Inspector Comment					

No Photos

LM Start	13.76	Rating **	A/W	Issue No.	20
LM End	13.95	Issue Type +	En	Location *	WS
Category	Earthen Levee			GPS Latitude/Longitude	
				Start	End
Item	Vegetation			39.683630 °	39.686221 °
				-121.777916 °	-121.779051 °
DWR ID	DWR_MA0005_02_s_2012_20				
Comment Code					
V8 : Environmental Requirements.					
Inspector Comment					

No Photos

* Location	** Rating	+ Issue Type
LS : Land Side N/A : Not Applicable WS : Water Side CR : Crown	A : Acceptable N : Not Inspected/Rated M : Minimally Acceptable C : Corrected U : Unacceptable A/W : Acceptable but Monitor & Maintain	Ma : Maintenance Deficiency Ob : Design & System Obsolescence En : Enforcement

**Flood Control Project Maintenance
Levee Inspections**

Levee Inspection Report By Mile - Spring 2016

Sutter Maintenance Yard Maintenance Area 0005

Waterway	Bank	Unit Miles	Inspection Start/End	Inspector
Unit No. 02 Butte Creek	Right	16.27	05/05/2016 05/05/2016	Keith Millard

LM Start	13.78	Rating **	M	Issue No.	59
LM End	13.78	Issue Type +	En	Location *	WS
Category	Supplemental			GPS Latitude/Longitude	
				Start	End
Item	DWR UCIP Field Study			39.683896 °	39.683896 °
				-121.778183 °	-121.778183 °
DWR ID					
Comment Code					
Inspector Comment					
FS_ID:48403 DS_ID:1680 EP_NO: N/A Repair Type: Non-Urgent Crossing Status: Found UCIP Comments: 5/11/2016 Unable to locate.8/3/2015 Unable to locate.Pipe appears to be abandoned.6/6/2013 Boiler has been removed and pipe buried on LS. Unable to locate.11/13/2013 Unable to locate.6/4/2014 Same as last inspection. Unable to locate.11/25/2014 Unable to locate. FIELD_STRUCT_DESC: 8-inch steel pipe through levee, 6.5 feet below crown. Boiler attached to LS end of pipe. (USACE 1958) FS Date: 5/25/2016 2:32:07 PM					

Photo 1 of 1 : UCIP_SP_2016_48403_68534.jpg



Pipe attached at boiler on LS toe.

LM Start	13.94	Rating **	M	Issue No.	60
LM End	13.94	Issue Type +	En	Location *	WS
Category	Supplemental			GPS Latitude/Longitude	
				Start	End
Item	DWR UCIP Field Study			39.685961 °	39.685961 °
				-121.779041 °	-121.779041 °
DWR ID					
Comment Code					
Inspector Comment					
FS_ID:48404 DS_ID:1681 EP_NO: N/A Repair Type: Non-Urgent Crossing Status: Found UCIP Comments: 5/11/216 Abandoned crossing8/3/2015 Pipe still appears abandoned.Pipe appears to be abandoned.6/6/2013 Same as last inspection.11/13/2013 Same as last inspection.6/4/2014 Same as last inspection.11/25/2014 Same as last inspection. FIELD_STRUCT_DESC: 6-inch steel pipe through levee, 7.1 feet below crown. Siphon breaker in corrugated metal riser on landward slope. One corrugated metal cutoff wall. Pipe is open on both ends. (USCE 1958) FS Date: 5/25/2016 2:33:00 PM					

Photo 1 of 1 : UCIP_SP_2016_48404_68535.jpg



CM riser with siphon breaker on LS shoulder.

* Location LS : Land Side N/A : Not Applicable WS : Water Side CR : Crown		** Rating A : Acceptable M : Minimally Acceptable U : Unacceptable		N : Not Inspected/Rated C : Corrected A/W : Acceptable but Monitor & Maintain		+ Issue Type Ma : Maintenance Deficiency Ob : Design & System Obsolescence En : Enforcement
--	--	--	--	---	--	---

**Flood Control Project Maintenance
Levee Inspections**

Levee Inspection Report By Mile - Spring 2016

Sutter Maintenance Yard Maintenance Area 0005

Waterway	Bank	Unit Miles	Inspection Start/End	Inspector
Unit No. 02 Butte Creek	Right	16.27	05/05/2016 05/05/2016	Keith Millard

LM Start	14.13	Rating **	U	Issue No.	43
LM End	14.13	Issue Type +	Ma	Location *	LS
Category	Earthen Levee			GPS Latitude/Longitude	
				Start	End
Item	Slope Stability			39.688715 °	39.688715 °
				-121.778345 °	-121.778345 °
DWR ID	DWR_MA0005_02_f_2014_43				
Comment Code					
S1 : Repair slope instability.					
Inspector Comment					

Photo 1 of 1 : SP_2016_MA0005_197_43_20160321_00018.jpg



View of the tilling into the landside slope.

LM Start	14.33	Rating **	U	Issue No.	25
LM End	14.33	Issue Type +	En	Location *	LS
Category	Earthen Levee			GPS Latitude/Longitude	
				Start	End
Item	Encroachments			39.691580 °	39.691580 °
				-121.779254 °	-121.779254 °
DWR ID	DWR_MA0005_02_s_2012_25				
Comment Code					
BU : Building					
Inspector Comment					
Unpermitted structure.					

Photo 1 of 1 : SP_2016_MA0005_197_25_20160321_00012.jpg



View of the buildings at the landside toe.

LM Start	14.39	Rating **	M	Issue No.	38
LM End	14.39	Issue Type +	Ma	Location *	WS
Category	Earthen Levee			GPS Latitude/Longitude	
				Start	End
Item	Encroachments			39.692284 °	39.692284 °
				-121.779394 °	-121.779394 °
DWR ID	DWR_MA0005_02_s_2016_38				
Comment Code					
TR : Tree or limb					
Inspector Comment					
Fallen trees on W/S slope of levee.					

Photo 1 of 1 : SP_2016_MA0005_197_38_20160509_00063.jpg



5/5/2016: Remove fallen tree from W/S slope.

* Location
LS : Land Side N/A : Not Applicable
WS : Water Side
CR : Crown

** Rating
A : Acceptable N : Not Inspected/Rated
M : Minimally Acceptable C : Corrected
U : Unacceptable A/W : Acceptable but Monitor & Maintain

+ Issue Type
Ma : Maintenance Deficiency
Ob : Design & System Obsolescence
En : Enforcement

**Flood Control Project Maintenance
Levee Inspections**

Levee Inspection Report By Mile - Spring 2016

Sutter Maintenance Yard Maintenance Area 0005

Waterway	Bank	Unit Miles	Inspection Start/End	Inspector
Unit No. 02 Butte Creek	Right	16.27	05/05/2016 05/05/2016	Keith Millard

LM Start	15.00	Rating **	M	Issue No.	61
LM End	15.00	Issue Type +	En	Location *	WS
Category	Supplemental			GPS Latitude/Longitude	
				Start	End
Item	DWR UCIP Field Study			39.700903 °	39.700903 °
				-121.779039 °	-121.779039 °
DWR ID					

Comment Code

Inspector Comment

FS_ID:48410
DS_ID:1685
EP_NO: N/A
Repair Type: Non-Urgent
Crossing Status: Found
UCIP Comments: 5/11/2016 Needs a cover for riser. The rest of the crossing appears to be in good condition.8/3/2015 Crossing appears in good condition but needs a cover made for the riser.6/6/2013 Same as last inspection.11/13/2013 Same as last inspection.6/4/2014 Same as last inspection.11/25/2014 Same as last inspection.
FIELD_STRUCT_DESC: 42-inch siphon pipe through the levee, 10.0 feet below crown. Slide gate in 54-inch corrugated metal riser on waterward slope. 5'X8'Concrete distribution box on landward side. Two corrugated metal cutoff walls. (USCE 1958)
FS Date: 5/25/2016 2:36:41 PM

LM Start	15.00	Rating **	M	Issue No.	61 (cont)
LM End	15.00	Issue Type +	En	Location *	WS

Photo 1 of 2 : UCIP_SP_2016_48410_68570.jpg



Concrete distribution box with slide gate on LS toe.

Photo 2 of 2 : UCIP_SP_2016_48410_68569.jpg



CMP riser on WS shoulder with slide gate.

* Location LS : Land Side N/A : Not Applicable WS : Water Side CR : Crown		** Rating A : Acceptable M : Minimally Acceptable U : Unacceptable N : Not Inspected/Rated C : Corrected A/W : Acceptable but Monitor & Maintain		+ Issue Type Ma : Maintenance Deficiency Ob : Design & System Obsolescence En : Enforcement	
--	--	---	--	---	--

**Flood Control Project Maintenance
Levee Inspections**

Levee Inspection Report By Mile - Spring 2016

Sutter Maintenance Yard Maintenance Area 0005

Waterway	Bank	Unit Miles	Inspection Start/End	Inspector
Unit No. 02 Butte Creek	Right	16.27	05/05/2016 05/05/2016	Keith Millard

LM Start	15.26	Rating **	M	Issue No.	62
LM End	15.26	Issue Type +	En	Location *	WS
Category	Supplemental			GPS Latitude/Longitude	
				Start	End
Item	DWR UCIP Field Study			39.704409 °	39.704409 °
				-121.777803 °	-121.777803 °
DWR ID					

Comment Code

Inspector Comment

FS_ID:48411
DS_ID:1686
EP_NO: N/A
Repair Type: Non-Urgent
Crossing Status: Found
UCIP Comments: 5/11/2016 Only WS standpipe was visible.8/3/2015 Only able to locate the standpipe on the WS.6/6/2013 Same as last inspection.11/13/2013 Same as last inspection.6/4/2014 Same as last inspection.11/25/2014 Same as last inspection.
FIELD_STRUCT_DESC: 12-inch siphon pipe through the levee, 10 feet below crown. Slide gate in 36-inch corrugated metal riser on waterward slope. 30-inch concrete standpipe at the landward toe. (USCE 1958)
FS Date: 5/25/2016 2:37:39 PM

LM Start	15.26	Rating **	M	Issue No.	62 (cont)
LM End	15.26	Issue Type +	En	Location *	WS

Photo 1 of 2 : UCIP_SP_2016_48411_68572.jpg



CMP riser on WS slope with slide gate.

Photo 2 of 2 : UCIP_SP_2016_48411_68571.jpg



Concrete riser on LS toe.

* Location LS : Land Side N/A : Not Applicable WS : Water Side CR : Crown		** Rating A : Acceptable M : Minimally Acceptable U : Unacceptable N : Not Inspected/Rated C : Corrected A/W : Acceptable but Monitor & Maintain		+ Issue Type Ma : Maintenance Deficiency Ob : Design & System Obsolescence En : Enforcement	
--	--	---	--	---	--

**Flood Control Project Maintenance
Levee Inspections**

Levee Inspection Report By Mile - Spring 2016

Sutter Maintenance Yard Maintenance Area 0005

Waterway	Bank	Unit Miles	Inspection Start/End	Inspector
Unit No. 02 Butte Creek	Right	16.27	05/05/2016 05/05/2016	Keith Millard

LM Start	15.47	Rating **	M	Issue No.	63
LM End	15.47	Issue Type +	En	Location *	WS
Category	Supplemental			GPS Latitude/Longitude	
				Start	End
Item	DWR UCIP Field Study			39.707544 °	39.707544 °
				-121.777701 °	-121.777701 °
DWR ID					
Comment Code					
Inspector Comment					
FS_ID:48412 DS_ID:1687 EP_NO: N/A Repair Type: Non-Urgent Crossing Status: Found UCIP Comments: 5/11/2016 Needs a lcover for riser. The rest of the crossing appears in good condition.8/3/2015 Crossing is in good condition but needs a cover made for the riser.Good candidate for video inspection.6/6/2013 Same as last inspection. Need to construct covers for top of standpipe.11/13/2013 Same as last inspection.6/4/2014 Same as last inspection.11/25/2014 Same as last inspection. FIELD_STRUCT_DESC: 1 of 2: 54-inch siphon pipe through the levee, 17.8 feet below crown. Slide gate in 66-inch CMP riser on waterward side. Concrete headwall and irrigation ditch at the landward toe. Large structure in floodway likely related. (USCE 1958) FS Date: 5/25/2016 2:38:28 PM					

LM Start	15.47	Rating **	M	Issue No.	63 (cont)
LM End	15.47	Issue Type +	En	Location *	WS

Photo 1 of 2 : UCIP_SP_2016_48412_68575.jpg



66-inch CMP riser on WS shoulder with slide gate.

Photo 2 of 2 : UCIP_SP_2016_48412_68574.jpg



Irrigation ditch at LS toe.

* Location LS : Land Side N/A : Not Applicable WS : Water Side CR : Crown		** Rating A : Acceptable M : Minimally Acceptable U : Unacceptable N : Not Inspected/Rated C : Corrected A/W : Acceptable but Monitor & Maintain		+ Issue Type Ma : Maintenance Deficiency Ob : Design & System Obsolescence En : Enforcement
--	--	---	--	---

**Flood Control Project Maintenance
Levee Inspections**

Unit Cover Sheet

Spring 2016 Levee Inspection Results

Sutter Maintenance Yard Maintenance Area 0005

Waterway			Bank	Unit Miles
Unit No. 03 Little Chico Creek Diversion			Left	1.49
	Spring (March - May)	Summer (June - August)	(September - November) Fall	Winter (December - February)
Unit Maintenance Rating (Fall Only)				
Date of Inspection	5/5/2016 - 5/5/2016			
DWR Inspector	Keith Millard			
Accompanied By	Shawn Freitag Sutter Maintenance Yard			

Summer & Winter Inspections

The Local Maintaining Agency (LMA) is responsible for summer and winter inspections. The LMA is required to submit a report regarding summer and winter inspections to the California Department of Water Resources (DWR).

DWR must be informed on the:

- a) completion of the inspection
- b) any changes other than the results of normal maintenance
- c) corrections to deficiencies noted in this report

If additional items are noted, further documentation of those items must also be submitted.

The LMA should submit this information to DWR using the LMA web application tool available at:

<http://cdec.water.ca.gov/lma.html>

If the LMA is unable to submit information on this webpage, please contact DWR for assistance.

The LMA should submit the information and any associated documentation by September 30 for summer inspections and March 31 for winter inspections.

**Flood Control Project Maintenance
Levee Inspections**

Levee Inspection Report By Mile - Spring 2016

Sutter Maintenance Yard Maintenance Area 0005

Waterway	Bank	Unit Miles	Inspection Start/End	Inspector
Unit No. 03 Little Chico Creek Diversion	Left	1.49	05/05/2016 05/05/2016	Keith Millard

LM Start	0.96	Rating **	A	Issue No.	2
LM End	0.96	Issue Type +	Ma	Location *	LS
Category	Earthen Levee			GPS Latitude/Longitude	
				Start	End
Item	Vegetation			39.726227 °	39.726227 °
				-121.781472 °	-121.781472 °
DWR ID	DWR_MA0005_03_s_2016_2				
Comment Code					
V1 : Control annual grass and weeds on the levee slopes and easements.					
Inspector Comment					
Yard doing a good job maintaining the Vegetation on the levee.					

Photo 1 of 1 : SP_2016_MA0005_198_2_20160517_00001.jpg



2016/05/05: Minimal vegetation on levee.

LM Start	1.44	Rating **	U	Issue No.	3
LM End	1.44	Issue Type +	En	Location *	LS
Category	Supplemental			GPS Latitude/Longitude	
				Start	End
Item	DWR UCIP Field Study			39.732942 °	39.732942 °
				-121.772445 °	-121.772445 °
DWR ID					
Comment Code					
Inspector Comment					
FS_ID:24148 DS_ID:1762 EP_NO: 16381 Repair Type: Urgent Crossing Status: Not Found UCIP Comments: Gasline not marked. Notes in permit indicate installation occurred. Owner needs to install markers.6/6/2013 Same as last inspection. Unable to locate.11/13/2013 Unable to locate. FIELD_STRUCT_DESC: 1 of 2: 2" gas main. (Permit No. 16381) FS Date: 11/14/2013 1:28:01 PM					

No Photos

* Location LS : Land Side N/A : Not Applicable WS : Water Side CR : Crown	** Rating A : Acceptable M : Minimally Acceptable U : Unacceptable	N : Not Inspected/Rated C : Corrected A/W : Acceptable but Monitor & Maintain	+ Issue Type Ma : Maintenance Deficiency Ob : Design & System Obsolescence En : Enforcement
--	--	---	---