

**Flood Control Project Maintenance
Levee Inspections
LMA District Cover Sheet**

Sacramento Maintenance Yard Maintenance Area 0004

	Spring (March - May)	Summer ** (June - August)	Fall (September - November)	Winter ** (December - February)
† Overall LMA Rating (Fall Only)				

** Non-receipt of Summer or Winter Inspection
Reports may effect overall annual rating.

† SPRING INSPECTIONS: Overall maintenance ratings are not determined for the spring inspection results. Individual maintenance deficiencies are rated using the same criteria in the spring and in the fall.

FALL INSPECTIONS: The overall maintenance rating shown above is based on operation and maintenance deficiencies identified within the attached unit inspection reports. This rating is not intended to be an indication of risk.

Comments

**Flood Control Project Maintenance
Levee Inspections
Unit Cover Sheet**

Sacramento Maintenance Yard Maintenance Area 0004

Waterway			Bank	Unit Miles
Unit No. 01 Sacramento River			Right	3.47
	Spring (March - May)	Summer (June - August)	(September - November) Fall	Winter (December - February)
Unit Maintenance Rating (Fall Only)				
Date of Inspection	4/21/2021 - 4/21/2021			
DWR Inspector	Saskia Donovan			
Accompanied By				

Summer & Winter Inspections

The Local Maintaining Agency (LMA) is responsible for summer and winter inspections. The LMA is required to submit a report regarding summer and winter inspections to the California Department of Water Resources (DWR).

DWR must be informed on the:

- a) completion of the inspection
- b) any changes other than the results of normal maintenance
- c) corrections to deficiencies noted in this report

If additional items are noted, further documentation of those items must also be submitted.

The LMA should submit this information to DWR using the LMA web application tool available at:

<http://cdec.water.ca.gov/lma.html>

If the LMA is unable to submit information on this webpage, please contact DWR for assistance.

The LMA should submit the information and any associated documentation by September 30 for summer inspections and March 31 for winter inspections.

**Flood Control Project Maintenance
Levee Inspections**

Levee Inspection Report By Mile - Spring 2021

Sacramento Maintenance Yard Maintenance Area 0004

Waterway	Bank	Unit Miles	Inspection Start/End	Inspector
Unit No. 01 Sacramento River	Right	3.47	04/21/2021 04/21/2021	Saskia Donovan

LM Start		Rating **	A	Issue No.	9
LM End		Issue Type +	Ma	Location *	
Category	Earthen Levee		GPS Latitude/Longitude		
			Start	End	
Item	Operations & Maintenance Manuals			°	°
				°	°
DWR ID	DWR_MA0004_01_s_2013_9				
Comment Code					
Inspector Comment					
The Sacramento Maintenance Yard has copies of their O&M manuals.					

No Photos

LM Start		Rating **	A	Issue No.	10
LM End		Issue Type +	Ma	Location *	
Category	Earthen Levee		GPS Latitude/Longitude		
			Start	End	
Item	Emergency Supplies & Equipment			°	°
				°	°
DWR ID	DWR_MA0004_01_s_2013_10				
Comment Code					
Inspector Comment					
The Sacramento Maintenance Yard has a stockpile of flood response material.					

No Photos

LM Start		Rating **	A	Issue No.	11
LM End		Issue Type +	Ma	Location *	
Category	Earthen Levee		GPS Latitude/Longitude		
			Start	End	
Item	Flood Preparedness & Training			°	°
				°	°
DWR ID	DWR_MA0004_01_s_2013_11				
Comment Code					
Inspector Comment					
The Sacramento Maintenance Yard has a written flood response plan and flood response training.					

No Photos

* Location LS : Land Side N/A : Not Applicable WS : Water Side CR : Crown	** Rating A : Acceptable M : Minimally Acceptable U : Unacceptable	N : Not Inspected/Rated C : Corrected A/W : Acceptable but Monitor & Maintain	+ Issue Type Ma : Maintenance Deficiency Ob : Design & System Obsolescence En : Enforcement
--	--	---	---

**Flood Control Project Maintenance
Levee Inspections**

Levee Inspection Report By Mile - Spring 2021

Sacramento Maintenance Yard Maintenance Area 0004

Waterway	Bank	Unit Miles	Inspection Start/End	Inspector
Unit No. 01 Sacramento River	Right	3.47	04/21/2021 04/21/2021	Saskia Donovan

LM Start	0.10	Rating **	M	Issue No.	1
LM End	0.10	Issue Type +	En	Location *	
Category	Supplemental		GPS Latitude/Longitude		
			Start	End	
Item	DWR UCIP Field Study		38.596580 °	38.596580 °	
			-121.545720 °	-121.545720 °	
DWR ID	272				
Comment Code					
Inspector Comment					
<p>FS_ID:59982 DS_ID:272 EP_NO: N/A Repair Type: Non-Urgent Crossing Status: Not Found UCIP Comments: 07/29/2020 No drawing was found confirming the removal of 24-inch steel pipe. Record was previously showing 24-inch steel pipe was removed however, the drawing 50-04-2273 was referencing the old 24-inch concrete pipe and not the 24-inch steel pipe installed. Record has been updated to show that the 24-inch steel pipe might still be present through the levee. Based on the record review, the 24-inch steel pipe has been updated to Non-Urgent due to records unavailable to determine status of pipe through the levee. Will need to coordinate with LMA to determine if any drawings are available to determine the status of the 24-inch steel pipe. (O. Magana - DWR UCIP)09/12/2012 Record remains No Action Needed. Pipe was removed from levee. (P. Amatya - DWR UCIP) FIELD_STRUCT_DESC: 24-inch steel irrigation pipe through the levee, 18 feet below the crown. Pump and gate valve on the waterside (WS). Surge chamber on the landside (LS). [Additional Reference(s): USACE Sacramento O&M Manual, Unit 116, August 1955, Revised 29 Dec 2016, (RM 62.5), also referenced as Sta 31+80 under As-Built Drawing 50-04-2273, Sheet 1, listed as 24-inch steel pipe installed and three pipes removed 24-inch concrete pipe, 18-inch iron pipe and 10-inch pipe; work at Sta 31+80 also referenced in Drawing No. 50-4-2275 Sheet 1 and 2] FS Date: 9/12/2012</p>					

No Photos

* Location LS : Land Side N/A : Not Applicable WS : Water Side CR : Crown	** Rating A : Acceptable M : Minimally Acceptable U : Unacceptable N : Not Inspected/Rated C : Corrected A/W : Acceptable but Monitor & Maintain	+ Issue Type Ma : Maintenance Deficiency Ob : Design & System Obsolescence En : Enforcement
--	---	---

**Flood Control Project Maintenance
Levee Inspections**

Levee Inspection Report By Mile - Spring 2021

Sacramento Maintenance Yard Maintenance Area 0004

Waterway	Bank	Unit Miles	Inspection Start/End	Inspector
Unit No. 01 Sacramento River	Right	3.47	04/21/2021 04/21/2021	Saskia Donovan

LM Start	0.17	Rating **	C	Issue No.	45
LM End	0.17	Issue Type +	Ma	Location *	WS
Category	Earthen Levee			GPS Latitude/Longitude	
				Start	End
Item	Animal Control			38.596743 °	38.596743 °
				-121.544502 °	-121.544502 °
DWR ID	DWR_MA0004_01_f _ 2020_45				
Comment Code					
A3 : No rodents visible, but rodent burrows visible; need to backfill and compact or grout burrows.					
Inspector Comment					
The animal hole has been repaired. Spring 2021.					

No Photos

LM Start	0.21	Rating **	A/W	Issue No.	7
LM End	0.22	Issue Type +	Ma	Location *	WS
Category	Earthen Levee			GPS Latitude/Longitude	
				Start	End
Item	Slope Stability			38.596840 °	38.596947 °
				-121.543848 °	-121.543727 °
DWR ID	DWR_MA0004_01_s_2019_7				
Comment Code					
S2 : Repair the levee slope damaged by foot traffic and prevent access where possible.					
Inspector Comment					
Monitor footpath and erosion on the waterside berm.					

Photo 1 of 1 : SP_2021_MA0004_298_7_20210223_00002.jpg



View looking north at footpath and erosion rills. Spring 2019

LM Start	0.24	Rating **	U	Issue No.	2
LM End	0.24	Issue Type +	En	Location *	CR
Category	Earthen Levee			GPS Latitude/Longitude	
				Start	End
Item	Encroachments			38.597193 °	38.597193 °
				-121.543421 °	-121.543421 °
DWR ID	DWR_MA0004_01_s_2012_2				
Comment Code					
FE : Fence					
Inspector Comment					
This is the USACE yard, and the chain link fence crosses the levee. The fence runs the length of the yard on the crown.					

Photo 1 of 1 : SP_2021_MA0004_298_2_20210504_00072.jpg



View of the fence across the levee crown at the SW side of the USACE facility. Spring 2021.

* Location LS : Land Side N/A : Not Applicable WS : Water Side CR : Crown		** Rating A : Acceptable M : Minimally Acceptable U : Unacceptable N : Not Inspected/Rated C : Corrected A/W : Acceptable but Monitor & Maintain		+ Issue Type Ma : Maintenance Deficiency Ob : Design & System Obsolescence En : Enforcement	
--	--	---	--	---	--

**Flood Control Project Maintenance
Levee Inspections**

Levee Inspection Report By Mile - Spring 2021

Sacramento Maintenance Yard Maintenance Area 0004

Waterway	Bank	Unit Miles	Inspection Start/End	Inspector
Unit No. 01 Sacramento River	Right	3.47	04/21/2021 04/21/2021	Saskia Donovan

LM Start	0.25	Rating **	M	Issue No.	3	
LM End	0.25	Issue Type +	En	Location *		
Category	Supplemental			GPS Latitude/Longitude		
				Start		End
Item	DWR UCIP Field Study			38.597277 °		38.597277 °
				-121.543264 °		-121.543264 °
DWR ID	25546					
Comment Code						
Inspector Comment						
FS_ID:59983						
DS_ID:25546						
EP_NO: N/A						
Repair Type: Non-Urgent						
Crossing Status: Found						
UCIP Comments: 09/07/2018 Record is considered Non-Urgent.						
Sediment clearing at pipe inlet is required. Pipe outlet is not visible on						
WS. O&M legacy system pipe. (O.Yakimov - DWR UCIP)						
FIELD_STRUCT_DESC: 12-inch corrugated metal drainage pipe						
through the levee, 19.0 feet below levee crown. [Additional						
Reference(s): Drawing No. 50-04-4179, Sheet 11.2 and 18.1, pdf page						
9 and 17 of 19, associated with USACE Sacramento O&M Manual, Unit						
116, August 1955, Revised 29 Dec 2016, shows 12-inch CMP						
referenced as Sta 44+92 (Site Mile 62.25 RT)].						
FS Date: 9/7/2018						

LM Start	0.25	Rating **	M	Issue No.	3 (cont)
LM End	0.25	Issue Type +	En	Location *	

Photo 1 of 3 : UCIP_SP_2021_59983_80009.jpg



Levee crown near crossing

Photo 2 of 3 : UCIP_SP_2021_59983_80011.jpg



Covered concrete box at LS toe

* Location LS : Land Side N/A : Not Applicable WS : Water Side CR : Crown	** Rating A : Acceptable M : Minimally Acceptable U : Unacceptable	N : Not Inspected/Rated C : Corrected A/W : Acceptable but Monitor & Maintain	+ Issue Type Ma : Maintenance Deficiency Ob : Design & System Obsolescence En : Enforcement
--	--	---	---

**Flood Control Project Maintenance
Levee Inspections**

Levee Inspection Report By Mile - Spring 2021

Sacramento Maintenance Yard Maintenance Area 0004

Waterway	Bank	Unit Miles	Inspection Start/End	Inspector
Unit No. 01 Sacramento River	Right	3.47	04/21/2021 04/21/2021	Saskia Donovan

LM Start	0.25	Rating **	M	Issue No.	3 (cont)
LM End	0.25	Issue Type +	En	Location *	
Category	Supplemental		GPS Latitude/Longitude		
			Start	End	
Item	DWR UCIP Field Study		38.597277 °	38.597277 °	
			-121.543264 °	-121.543264 °	
DWR ID	25546				

Photo 3 of 3 : UCIP_SP_2021_59983_80012.jpg



Pipe inlet concrete box is covered with metal sheeting

LM Start	0.32	Rating **	M	Issue No.	4
LM End	0.32	Issue Type +	En	Location *	
Category	Supplemental		GPS Latitude/Longitude		
			Start	End	
Item	DWR UCIP Field Study		38.597915 °	38.597915 °	
			-121.542264 °	-121.542264 °	
DWR ID	25545				

Comment Code

Inspector Comment

FS_ID:59819
 DS_ID:25545
 EP_NO: N/A
 Repair Type: Non-Urgent
 Crossing Status: Found
 UCIP Comments: 09/07/2018 Record remains Non-Urgent. Pipe not visible at WS slope. No permit has been identified authorizing pipe. (O.Yakimov - DWR UCIP)
 FIELD_STRUCT_DESC: 12-inch corrugated metal drainage pipe through the levee, 23.3 feet below levee crown. [Additional Reference(s): Drawing No. 50-04-4179, Sheet 11.2 and 18.1, pdf page 9 and 17 of 19, associated with USACE Sacramento O&M Manual, Unit 116, August 1955, Revised 29 Dec 2016, shows 12-inch CMP referenced as Sta 48+62 (Site Mile 62.25 RT)].
 FS Date: 9/7/2018

Photo 1 of 3 : UCIP_SP_2021_59819_80017.jpg



Drainage pit at LS toe

* Location LS : Land Side N/A : Not Applicable WS : Water Side CR : Crown	** Rating A : Acceptable M : Minimally Acceptable U : Unacceptable	N : Not Inspected/Rated C : Corrected A/W : Acceptable but Monitor & Maintain	+ Issue Type Ma : Maintenance Deficiency Ob : Design & System Obsolescence En : Enforcement
--	--	---	---

**Flood Control Project Maintenance
Levee Inspections**

Levee Inspection Report By Mile - Spring 2021

Sacramento Maintenance Yard Maintenance Area 0004

Waterway	Bank	Unit Miles	Inspection Start/End	Inspector
Unit No. 01 Sacramento River	Right	3.47	04/21/2021 04/21/2021	Saskia Donovan

LM Start	0.32	Rating **	M	Issue No.	4 (cont)
LM End	0.32	Issue Type +	En	Location *	
Category	Supplemental			GPS Latitude/Longitude	
				Start	End
Item	DWR UCIP Field Study			38.597915 °	38.597915 °
				-121.542264 °	-121.542264 °
DWR ID	25545				

Photo 2 of 3 : UCIP_SP_2021_59819_80018.jpg



Structures at LS toe where drainage pit is located

LM Start	0.32	Rating **	M	Issue No.	4 (cont)
LM End	0.32	Issue Type +	En	Location *	

Photo 3 of 3 : UCIP_SP_2021_59819_80019.jpg



Levee crown at crossing

* Location LS : Land Side N/A : Not Applicable WS : Water Side CR : Crown	** Rating A : Acceptable M : Minimally Acceptable U : Unacceptable	N : Not Inspected/Rated C : Corrected A/W : Acceptable but Monitor & Maintain	+ Issue Type Ma : Maintenance Deficiency Ob : Design & System Obsolescence En : Enforcement
--	--	---	---

**Flood Control Project Maintenance
Levee Inspections**

Levee Inspection Report By Mile - Spring 2021

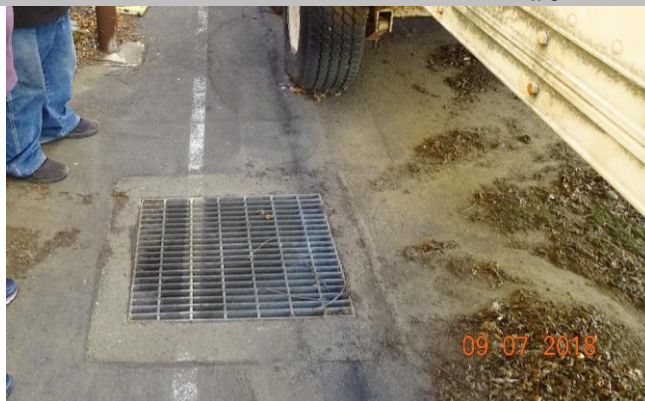
Sacramento Maintenance Yard Maintenance Area 0004

Waterway	Bank	Unit Miles	Inspection Start/End	Inspector
Unit No. 01 Sacramento River	Right	3.47	04/21/2021 04/21/2021	Saskia Donovan

LM Start	0.38	Rating **	M	Issue No.	5	
LM End	0.38	Issue Type +	En	Location *		
Category	Supplemental			GPS Latitude/Longitude		
				Start		End
Item	DWR UCIP Field Study			38.598480 °		38.598480 °
				-121.541376 °		-121.541376 °
DWR ID	25547					
Comment Code						
Inspector Comment						
FS_ID:54255 DS_ID:25547 EP_NO: N/A Repair Type: Non-Urgent Crossing Status: Found UCIP Comments: 09/07/2018 Record remains Non-Urgent. No permit for this crossing was found. Estimated to be 6-inch HDPE drainage pipe inside of drainage box on landside closer to levee toe. (O.Yakimov - DWR UCIP) FIELD_STRUCT_DESC: 6-inch high-density polyethylene (HDPE) drainage pipe through the levee, unknown depth below levee crown. First drainage pit with grid is located in the middle of paved road, second is between 2 trailers toward levee toe inline with the first one. FS Date: 9/7/2018						

LM Start	0.38	Rating **	M	Issue No.	5 (cont)
LM End	0.38	Issue Type +	En	Location *	

Photo 1 of 3 : UCIP_SP_2021_54255_80007.jpg



Grided drainage pit between trailers on LS

Photo 2 of 3 : UCIP_SP_2021_54255_80005.jpg



View of levee crown at crossing

* Location LS : Land Side N/A : Not Applicable WS : Water Side CR : Crown	** Rating A : Acceptable M : Minimally Acceptable U : Unacceptable	N : Not Inspected/Rated C : Corrected A/W : Acceptable but Monitor & Maintain	+ Issue Type Ma : Maintenance Deficiency Ob : Design & System Obsolescence En : Enforcement
--	--	---	---

**Flood Control Project Maintenance
Levee Inspections**

Levee Inspection Report By Mile - Spring 2021

Sacramento Maintenance Yard Maintenance Area 0004

Waterway	Bank	Unit Miles	Inspection Start/End	Inspector
Unit No. 01 Sacramento River	Right	3.47	04/21/2021 04/21/2021	Saskia Donovan

LM Start	0.38	Rating **	M	Issue No.	5 (cont)
LM End	0.38	Issue Type +	En	Location *	
Category	Supplemental			GPS Latitude/Longitude	
				Start	End
Item	DWR UCIP Field Study			38.598480 °	38.598480 °
				-121.541376 °	-121.541376 °
DWR ID	25547				

Photo 3 of 3 : UCIP_SP_2021_54255_80006.jpg



View of landside looking from levee crown

LM Start	0.41	Rating **	M	Issue No.	6
LM End	0.41	Issue Type +	En	Location *	
Category	Supplemental			GPS Latitude/Longitude	
				Start	End
Item	DWR UCIP Field Study			38.598742 °	38.598742 °
				-121.541014 °	-121.541014 °
DWR ID	25549				

No Photos

Comment Code

Inspector Comment

FS_ID:58969
DS_ID:25549
EP_NO: 2912
Repair Type: Non-Urgent
Crossing Status: Not Found
UCIP Comments: 10/10/2019 Record remains Non-Urgent. Crossing not found. According to FMO staff this pipe was disconnected from Sac Yard storm drainage system and grouted in place. Unable to locate a permit and confirm proper pipe abandonment. (O.Yakimov - DWR UCIP)09/07/2018 Crossing not found (O.Yakimov - DWR UCIP)
FIELD_STRUCT_DESC: 6-inch corrugated metal drainage pipe through the levee, 15.5 feet below levee crown. (6-inch galvanized iron pipe authorized under Permit 2912, 1958 - Department of Water Resources). [Additional Reference(s): DWR Levee Log, 2005 (HLM 0.41 at a depth of 6.4 feet below the crown). Drawing No. 50-04-4179, Sheet 11.2 and 18.1, pdf page 9 and 17 of 19, associated with USACE Sacramento O&M Manual, Unit 116, August 1955, Revised 29 Dec 2016, shows combination of 6-inch and 8-inch CMP referenced as Sta 53+33]
FS Date: 10/10/2019 8:27:00 AM

* Location LS : Land Side N/A : Not Applicable WS : Water Side CR : Crown	** Rating A : Acceptable M : Minimally Acceptable U : Unacceptable	N : Not Inspected/Rated C : Corrected A/W : Acceptable but Monitor & Maintain	+ Issue Type Ma : Maintenance Deficiency Ob : Design & System Obsolescence En : Enforcement
--	--	---	---

**Flood Control Project Maintenance
Levee Inspections**

Levee Inspection Report By Mile - Spring 2021

Sacramento Maintenance Yard Maintenance Area 0004

Waterway	Bank	Unit Miles	Inspection Start/End	Inspector
Unit No. 01 Sacramento River	Right	3.47	04/21/2021 04/21/2021	Saskia Donovan

LM Start	0.41	Rating **	U	Issue No.	15
LM End	0.41	Issue Type +	En	Location *	CR
Category	Earthen Levee			GPS Latitude/Longitude	
				Start	End
Item	Encroachments			38.598661 °	38.598661 °
				-121.540895 °	-121.540895 °
DWR ID	DWR_MA0004_01_f _ 2016_15				
Comment Code					
FE : Fence					
Inspector Comment					
A chain link fence for the USACE facility crosses the levee.					

Photo 1 of 1 : SP_2021_MA0004_298_15_20210504_00071.jpg



View of the fence across the levee crown on the NE side of the USACE facility. Spring 2021.

LM Start	0.43	Rating **	M	Issue No.	8	
LM End	0.43	Issue Type +	En	Location *		
Category	Supplemental			GPS Latitude/Longitude		
				Start		End
Item	DWR UCIP Field Study			38.598925 °		38.598925 °
				-121.540727 °		-121.540727 °
DWR ID	25544					
Comment Code						
Inspector Comment						
FS_ID:58977						
DS_ID:25544						
EP_NO: N/A						
Repair Type: Non-Urgent						
Crossing Status: Found						
UCIP Comments: 10/10/2019 Record remains Non-Urgent. No permit has been identified authorizing pipe. According to FMO staff this pipe was disconnected from Sac Yard storm drainage system and grouted in place. Unable to locate a permit and confirm proper pipe abandonment (O.Yakimov - DWR UCIP)09/07/2018 Steel pipe at the bottom of drainage box is visible. Large reconstruction project is going on the property. Contact Brian Murphy with FMO after work is completed to request as-builts. (O.Yakimov - DWR UCIP)						
FIELD_STRUCT_DESC: 8-inch steel drainage pipe through the levee, 12.1 feet below levee crown. [Additional Reference(s): Drawing No. 50-04-4179, Sheet 11.2 and 18.1, pdf page 9 and 17 of 19, associated with USACE Sacramento O&M Manual, Unit 116, August 1955, Revised 29 Dec 2016, shows 8-inch CMP referenced as Sta 54+53 (Site Mile 62.25 RT)].						
FS Date: 10/10/2019 8:51:00 AM						

Photo 1 of 3 : UCIP_SP_2021_58977_81540.jpg



8-inch steel pipe at the bottom of drainage box on LS goes towards levee

* Location LS : Land Side N/A : Not Applicable WS : Water Side CR : Crown	** Rating A : Acceptable M : Minimally Acceptable U : Unacceptable	N : Not Inspected/Rated C : Corrected A/W : Acceptable but Monitor & Maintain	+ Issue Type Ma : Maintenance Deficiency Ob : Design & System Obsolescence En : Enforcement
--	--	--	---

**Flood Control Project Maintenance
Levee Inspections**

Levee Inspection Report By Mile - Spring 2021

Sacramento Maintenance Yard Maintenance Area 0004

Waterway	Bank	Unit Miles	Inspection Start/End	Inspector
Unit No. 01 Sacramento River	Right	3.47	04/21/2021 04/21/2021	Saskia Donovan

LM Start	0.43	Rating **	M	Issue No.	8 (cont)	
LM End	0.43	Issue Type +	En	Location *		
Category	Supplemental			GPS Latitude/Longitude		
				Start		End
Item	DWR UCIP Field Study			38.598925 °		38.598925 °
				-121.540727 °		-121.540727 °
DWR ID	25544					

Photo 2 of 3 : UCIP_SP_2021_58977_81512.jpg



View of drainage box on levee crown

LM Start	0.43	Rating **	M	Issue No.	8 (cont)
LM End	0.43	Issue Type +	En	Location *	

Photo 3 of 3 : UCIP_SP_2021_58977_81539.jpg



Drainage box on levee crown

* Location LS : Land Side N/A : Not Applicable WS : Water Side CR : Crown	** Rating A : Acceptable M : Minimally Acceptable U : Unacceptable	N : Not Inspected/Rated C : Corrected A/W : Acceptable but Monitor & Maintain	+ Issue Type Ma : Maintenance Deficiency Ob : Design & System Obsolescence En : Enforcement
--	--	---	---

**Flood Control Project Maintenance
Levee Inspections**

Levee Inspection Report By Mile - Spring 2021

Sacramento Maintenance Yard Maintenance Area 0004

Waterway	Bank	Unit Miles	Inspection Start/End	Inspector
Unit No. 01 Sacramento River	Right	3.47	04/21/2021 04/21/2021	Saskia Donovan

LM Start	0.46	Rating **	M	Issue No.	13
LM End	0.46	Issue Type +	En	Location *	
Category	Supplemental			GPS Latitude/Longitude	
				Start	End
Item	DWR UCIP Field Study			38.599205 °	38.599205 °
				-121.540303 °	-121.540303 °
DWR ID	25552				

Comment Code

Inspector Comment

FS_ID:58971
DS_ID:25552
EP_NO: N/A
Repair Type: Non-Urgent
Crossing Status: Not Found
UCIP Comments: 10/10/2019 Record remains Non-Urgent. Crossing not found. According to FMO staff this pipe was disconnected from Sac Yard storm drainage system and grouted in place. Unable to locate a permit and confirm proper pipe abandonment. No permit has been identified authorizing pipe. (O.Yakimov - DWR UCIP) 09/07/2018
Crossing not found (O.Yakimov - DWR UCIP)
FIELD_STRUCT_DESC: 9-inch steel drainage pipe through the levee, 17 feet below levee crown. [Additional Reference(s): Drawing No. 50-04-4179, Sheet 11.2 and 18.1, pdf page 9 and 17 of 19, associated with USACE Sacramento O&M Manual, Unit 116, August 1955, Revised 29 Dec 2016, shows 9-inch steel pipe referenced as Sta 56+02 (Site Mile 62.25 RT)]
FS Date: 10/10/2019 9:03:00 AM

LM Start	0.46	Rating **	M	Issue No.	13 (cont)
LM End	0.46	Issue Type +	En	Location *	

Photo 1 of 3 : UCIP_SP_2021_58971_81541.jpg



View of levee crown at potential crossing

Photo 2 of 3 : UCIP_SP_2021_58971_83345.jpg



View of levee crown at the crossing

* Location LS : Land Side N/A : Not Applicable WS : Water Side CR : Crown	** Rating A : Acceptable M : Minimally Acceptable U : Unacceptable	N : Not Inspected/Rated C : Corrected A/W : Acceptable but Monitor & Maintain	+ Issue Type Ma : Maintenance Deficiency Ob : Design & System Obsolescence En : Enforcement
--	--	---	---

Levee Inspection Report By Mile - Spring 2021

Waterway	Bank	Unit Miles	Inspection Start/End	Inspector
Unit No. 01 Sacramento River	Right	3.47	04/21/2021 04/21/2021	Saskia Donovan

Photo 3 of 3 : UCIP_SP_2021_58971_83346.jpg



View of WS levee slope

Photo 1 of 3 : UCIP_SP_2021_58714_80008.jpg



Top of levee at crossing

Inspector Comment

FS Date: 10/10/2019 9:04:00 AM

* Location	** Rating	+ Issue Type
LS : Land Side N/A : Not Applicable	A : Acceptable N : Not Inspected/Rated	Ma : Maintenance Deficiency
WS : Water Side	M : Minimally Acceptable C : Corrected	Ob : Design & System Obsolescence
CR : Crown	U : Unacceptable A/W : Acceptable but Monitor & Maintain	En : Enforcement

**Flood Control Project Maintenance
Levee Inspections**

Levee Inspection Report By Mile - Spring 2021

Sacramento Maintenance Yard Maintenance Area 0004

Waterway	Bank	Unit Miles	Inspection Start/End	Inspector
Unit No. 01 Sacramento River	Right	3.47	04/21/2021 04/21/2021	Saskia Donovan

LM Start	0.48	Rating **	M	Issue No.	16 (cont)
LM End	0.48	Issue Type +	En	Location *	
Category	Supplemental		GPS Latitude/Longitude		
			Start	End	
Item	DWR UCIP Field Study		38.599396 °	38.599396 °	
			-121.540026 °	-121.540026 °	
DWR ID	25550				

Photo 2 of 3 : UCIP_SP_2021_58714_83347.jpg



View of crown at crossing

LM Start	0.48	Rating **	M	Issue No.	16 (cont)
LM End	0.48	Issue Type +	En	Location *	

Photo 3 of 3 : UCIP_SP_2021_58714_83348.jpg



View of crown at crossing

* Location LS : Land Side N/A : Not Applicable WS : Water Side CR : Crown	** Rating A : Acceptable M : Minimally Acceptable U : Unacceptable	N : Not Inspected/Rated C : Corrected A/W : Acceptable but Monitor & Maintain	+ Issue Type Ma : Maintenance Deficiency Ob : Design & System Obsolescence En : Enforcement
--	--	---	---

**Flood Control Project Maintenance
Levee Inspections**

Levee Inspection Report By Mile - Spring 2021

Sacramento Maintenance Yard Maintenance Area 0004

Waterway	Bank	Unit Miles	Inspection Start/End	Inspector
Unit No. 01 Sacramento River	Right	3.47	04/21/2021 04/21/2021	Saskia Donovan

LM Start	0.58	Rating **	M	Issue No.	19
LM End	0.58	Issue Type +	En	Location *	
Category	Supplemental		GPS Latitude/Longitude		
			Start	End	
Item	DWR UCIP Field Study		38.599999 °	38.599999 °	
			-121.538223 °	-121.538223 °	
DWR ID	25582				
Comment Code					
Inspector Comment					
FS_ID:58978 DS_ID:25582 EP_NO: N/A Repair Type: Non-Urgent Crossing Status: Not Found UCIP Comments: 07/01/2020 Record is considered Non-Urgent. No maintenance records were made available. Need to contact owner to determine status of crossing. (O. Magana - DWR UCIP) FIELD_STRUCT_DESC: 3/4-inch gas line of unknown material crossing landside levee slope enters a Sac Yard building on levee crown. Discovered during revision of Sacramento Maintenance Yard Site Rehabilitation - Phase I Pavement and Utilities as-built drawings (Sheet 009 Existing Utility System, Drawing No. C1-05). FS Date: 10/10/2019 1:47:00 PM					

No Photos

LM Start	0.58	Rating **	M	Issue No.	20
LM End	0.58	Issue Type +	En	Location *	
Category	Supplemental		GPS Latitude/Longitude		
			Start	End	
Item	DWR UCIP Field Study		38.599965 °	38.599965 °	
			-121.538275 °	-121.538275 °	
DWR ID	25583				
Comment Code					
Inspector Comment					
FS_ID:58963 DS_ID:25583 EP_NO: N/A Repair Type: Non-Urgent Crossing Status: Found UCIP Comments: 07/15/2020 UCIP Record brought online. 6-inch pipe discovered during the construction of Sacramento Maintenance Yard Site Rehabilitation during 2018 UCIP Inspection by O. Yakimov. Pipe shown in Phase I Pavement and Utilities as-built drawings, Sheet 009 Existing Utility System, Drawing No. C1-05. (O. Magana - DWR UCIP) FIELD_STRUCT_DESC: 6-inch VCP storm drainage pipe, gridded concrete drainage box in drainage ditch at LS toe. Discovered during revision of Sacramento Maintenance Yard Site Rehabilitation - Phase I Pavement and Utilities as-built drawings (Sheet 009 Existing Utility System, Drawing No. C1-05). FS Date: 7/15/2020 3:32:18 PM					

No Photos

* Location LS : Land Side N/A : Not Applicable WS : Water Side CR : Crown	** Rating A : Acceptable M : Minimally Acceptable U : Unacceptable	N : Not Inspected/Rated C : Corrected A/W : Acceptable but Monitor & Maintain	+ Issue Type Ma : Maintenance Deficiency Ob : Design & System Obsolescence En : Enforcement
--	--	---	---

**Flood Control Project Maintenance
Levee Inspections**

Levee Inspection Report By Mile - Spring 2021

Sacramento Maintenance Yard Maintenance Area 0004

Waterway	Bank	Unit Miles	Inspection Start/End	Inspector
Unit No. 01 Sacramento River	Right	3.47	04/21/2021 04/21/2021	Saskia Donovan

LM Start	0.62	Rating **	M	Issue No.	21	
LM End	0.62	Issue Type +	En	Location *		
Category	Supplemental			GPS Latitude/Longitude		
				Start	End	
Item	DWR UCIP Field Study			38.600403 °	38.600403 °	
				-121.537656 °	-121.537656 °	
DWR ID	25584					
Comment Code						
Inspector Comment						
FS_ID:58975 DS_ID:25584 EP_NO: N/A Repair Type: Non-Urgent Crossing Status: Found UCIP Comments: 07/15/2020 UCIP Record brought online. 12-inch pipe discovered during the construction of Sacramento Maintenance Yard Site Rehabilitation during 2018 UCIP Inspection by O. Yakimov. Pipe shown in Phase I Pavement and Utilities as-built drawings, Sheet 010 Existing Utility System, Drawing No. C1-06. (O. Magana - DWR UCIP) FIELD_STRUCT_DESC: 12-inch CMP storm drainage pipe. 36-inch CMP manhole on levee crown and storm drain pipe outlet in drainage ditch at LS toe. Discovered during revision of Sacramento Maintenance Yard Site Rehabilitation - Phase I Pavement and Utilities as-built drawings (Sheet 010 Existing Utility System, Drawing No. C1-06). FS Date: 7/15/2020						

No Photos

LM Start	1.04	Rating **	M	Issue No.	46
LM End	1.09	Issue Type +	Ma	Location *	WS
Category	Earthen Levee			GPS Latitude/Longitude	
				Start	End
Item	Vegetation			38.602372 °	38.602542 °
				-121.531144 °	-121.530120 °
DWR ID	DWR_MA0004_01_f_2020_46				
Comment Code					
V2 : Remove the wild growth other than native grasses from the levee slopes.					
Inspector Comment					
Waterside vegetation should be trimmed 20' downward from the WS shoulder.					

No Photos

* Location LS : Land Side N/A : Not Applicable WS : Water Side CR : Crown	** Rating A : Acceptable M : Minimally Acceptable U : Unacceptable	N : Not Inspected/Rated C : Corrected A/W : Acceptable but Monitor & Maintain	+ Issue Type Ma : Maintenance Deficiency Ob : Design & System Obsolescence En : Enforcement
--	--	---	---

**Flood Control Project Maintenance
Levee Inspections**

Levee Inspection Report By Mile - Spring 2021

Sacramento Maintenance Yard Maintenance Area 0004

Waterway	Bank	Unit Miles	Inspection Start/End	Inspector
Unit No. 01 Sacramento River	Right	3.47	04/21/2021 04/21/2021	Saskia Donovan

LM Start	1.21	Rating **	M	Issue No.	47
LM End	1.26	Issue Type +	Ma	Location *	WS
Category	Earthen Levee			GPS Latitude/Longitude	
				Start	End
Item	Vegetation			38.602750 °	38.602813 °
				-121.527990 °	-121.526986 °
DWR ID	DWR_MA0004_01_f_2020_47				
Comment Code					
V1 : Control annual grass and weeds on the levee slopes and easements.					
Inspector Comment					
Waterside vegetation should be trimmed 20' downward from the WS shoulder.					

No Photos

LM Start	1.72	Rating **	M	Issue No.	24
LM End	1.72	Issue Type +	En	Location *	
Category	Supplemental			GPS Latitude/Longitude	
				Start	End
Item	DWR UCIP Field Study			38.602040 °	38.602040 °
				-121.518610 °	-121.518610 °
DWR ID	261				
Comment Code					
Inspector Comment					
FS_ID:55295 DS_ID:261 EP_NO: 5528 Repair Type: Non-Urgent Crossing Status: Not Found UCIP Comments: 10/10/2019 Record remains Non-Urgent. Crossing not found. (O.Yakimov - DWR UCIP) FIELD_STRUCT_DESC: 2-inch electrical conduit of an unknown material through the levee, 1.5 feet below the crown. Electrical conduit supplies power to an existing pumping plant located on the waterside (WS) slope of the levee. (2-inch conduit authorized under Permit No. 5528, 1966 - G.W. Williams Company) FS Date: 10/10/2019 2:40:56 PM					

No Photos

* Location LS : Land Side N/A : Not Applicable WS : Water Side CR : Crown	** Rating A : Acceptable M : Minimally Acceptable U : Unacceptable	N : Not Inspected/Rated C : Corrected A/W : Acceptable but Monitor & Maintain	+ Issue Type Ma : Maintenance Deficiency Ob : Design & System Obsolescence En : Enforcement
--	--	---	---

**Flood Control Project Maintenance
Levee Inspections**

Levee Inspection Report By Mile - Spring 2021

Sacramento Maintenance Yard Maintenance Area 0004

Waterway	Bank	Unit Miles	Inspection Start/End	Inspector
Unit No. 01 Sacramento River	Right	3.47	04/21/2021 04/21/2021	Saskia Donovan

LM Start	1.72	Rating **	M	Issue No.	25
LM End	1.72	Issue Type +	En	Location *	
Category	Supplemental			GPS Latitude/Longitude	
				Start	End
Item	DWR UCIP Field Study			38.602040 °	38.602040 °
				-121.518610 °	-121.518610 °
DWR ID	262				
Comment Code					
Inspector Comment					
FS_ID:58973					
DS_ID:262					
EP_NO: 5824					
Repair Type: Non-Urgent					
Crossing Status: Not Found					
UCIP Comments: 10/10/2019 Record updated to Non-Urgent. Crossing not found. Recommend LMA prepare a contingency plan for increased inspections during high-water to identify any pipe integrity or levee integrity issues that might arise with not found pipe. Need to contact owner to determine status of pipe. (O.Yakimov - DWR UCIP)					
FIELD_STRUCT_DESC: 8-inch welded steel, dipped and wrapped, discharge pipe, 8.2 feet below the crown. This pipe is a replacement for an existing 8-inch pipe. The new pipe was installed between the existing pumping plant located on the waterside (WS) berm of the levee and the existing reinforced concrete discharge box located at the landside (LS) toe, a distance of 88.5 feet. (Replaced an existing 8-inch welded steel pipe discharge line on an existing pumping plant authorized under Permit No. 5824, 1967 - G. W. Williams Company).					
[Additional Reference(s): USACE Sacramento O&M Manual, Unit 116, August 1955, Revised 29 Dec 2016, (RM 60.85), listed as 8-inch pipe].					
FS Date: 10/10/2019 2:43:00 PM					

No Photos

LM Start	1.83	Rating **	M	Issue No.	60
LM End	1.92	Issue Type +	En	Location *	LS
Category	Earthen Levee			GPS Latitude/Longitude	
				Start	End
Item	Vegetation			38.601467 °	38.600910 °
				-121.516650 °	-121.515240 °
DWR ID	DWR_MA0004_01_s_2021_60				
Comment Code					
V6 : Landscaping					
Inspector Comment					
The trees on the LS levee shoulder should be trimmed to 5 ft above the ground. Spring 2021					

Photo 1 of 1 : SP_2021_MA0004_298_60_20210504_00070.jpg



View of the trees on the LS levee shoulder. Spring 2021.

* Location LS : Land Side N/A : Not Applicable WS : Water Side CR : Crown	** Rating A : Acceptable M : Minimally Acceptable U : Unacceptable	N : Not Inspected/Rated C : Corrected A/W : Acceptable but Monitor & Maintain	+ Issue Type Ma : Maintenance Deficiency Ob : Design & System Obsolescence En : Enforcement
--	--	---	---

**Flood Control Project Maintenance
Levee Inspections**

Levee Inspection Report By Mile - Spring 2021

Sacramento Maintenance Yard Maintenance Area 0004

Waterway	Bank	Unit Miles	Inspection Start/End	Inspector
Unit No. 01 Sacramento River	Right	3.47	04/21/2021 04/21/2021	Saskia Donovan

LM Start	2.01	Rating **	M	Issue No.	26
LM End	2.01	Issue Type +	En	Location *	
Category	Supplemental			GPS Latitude/Longitude	
				Start	End
Item	DWR UCIP Field Study			38.599960 °	38.599960 °
				-121.514070 °	-121.514070 °
DWR ID	274				
Comment Code					
Inspector Comment					
FS_ID:59815 DS_ID:274 EP_NO: N/A Repair Type: Non-Urgent Crossing Status: Not Found UCIP Comments: 10/10/2019 Record remains Non-Urgent. Crossing not found. Recommend LMA prepare a contingency plan for increased inspections during high-water to identify any pipe integrity or levee integrity issues that might arise with not found pipe. Geophysical results did not confirm presence of pipe through levee. Record will remain in UCIP's inspection records until future Levee Improvement Project can confirm no crossing was found through the levee. No permit has been identified authorizing pipe. (O.Yakimov - DWR UCIP) FIELD_STRUCT_DESC: 12-inch steel irrigation pipe through the levee, at an unknown depth. [Additional Reference(s): USACE Sacramento O&M Manual, Unit 116, August 1955, Revised 29 Dec 2016, (RM 60.55), listed as 12-inch steel pipe]. FS Date: 10/10/2019 3:15:00 PM					

No Photos

LM Start	2.03	Rating **	U	Issue No.	58
LM End	2.05	Issue Type +	En	Location *	LS
Category	Earthen Levee			GPS Latitude/Longitude	
				Start	End
Item	Encroachments			38.599786 °	38.599442 °
				-121.513973 °	-121.513698 °
DWR ID	DWR_MA0004_01_s_2021_58				
Comment Code					
FE : Fence					
Inspector Comment					

Photo 1 of 1 : SP_2021_MA0004_298_58_20210504_00069.jpg



View of the privacy fence along the LS levee slope. Spring 2021.

* Location LS : Land Side N/A : Not Applicable WS : Water Side CR : Crown	** Rating A : Acceptable M : Minimally Acceptable U : Unacceptable	N : Not Inspected/Rated C : Corrected A/W : Acceptable but Monitor & Maintain	+ Issue Type Ma : Maintenance Deficiency Ob : Design & System Obsolescence En : Enforcement
--	--	---	---

**Flood Control Project Maintenance
Levee Inspections**

Levee Inspection Report By Mile - Spring 2021

Sacramento Maintenance Yard Maintenance Area 0004

Waterway	Bank	Unit Miles	Inspection Start/End	Inspector
Unit No. 01 Sacramento River	Right	3.47	04/21/2021 04/21/2021	Saskia Donovan

LM Start	2.05	Rating **	M	Issue No.	14
LM End	2.21	Issue Type +	En	Location *	LS
Category	Earthen Levee			GPS Latitude/Longitude	
				Start	End
Item	Encroachments			38.599439 °	38.597533 °
				-121.513708 °	-121.513134 °
DWR ID	DWR_MA0004_01_s_2017_14				
Comment Code					
FE : Fence					
Inspector Comment					
A fence runs along the toe of the landside levee.					

Photo 1 of 1 : SP_2021_MA0004_298_14_20210504_00067.jpg



View of the fence along the LS levee toe. Spring 2021.

LM Start	2.07	Rating **	M	Issue No.	48
LM End	2.12	Issue Type +	En	Location *	LS
Category	Earthen Levee			GPS Latitude/Longitude	
				Start	End
Item	Vegetation			38.599173 °	38.598602 °
				-121.513510 °	-121.513060 °
DWR ID	DWR_MA0004_01_f_2020_48				
Comment Code					
V6 : Landscaping					
Inspector Comment					

No Photos

LM Start	2.13	Rating **	M	Issue No.	18
LM End	2.13	Issue Type +	Ma	Location *	WS
Category	Earthen Levee			GPS Latitude/Longitude	
				Start	End
Item	Animal Control			38.598478 °	38.598478 °
				-121.512932 °	-121.512932 °
DWR ID	DWR_MA0004_01_f_2015_18				
Comment Code					
A3 : No rodents visible, but rodent burrows visible; need to backfill and compact or grout burrows.					
Inspector Comment					
Backfill animal holes.					

Photo 1 of 1 : SP_2021_MA0004_298_18_20210504_00068.jpg



View of the animal holes on the WS levee slope. Spring 2021.

* Location
LS : Land Side N/A : Not Applicable
WS : Water Side
CR : Crown

** Rating
A : Acceptable N : Not Inspected/Rated
M : Minimally Acceptable C : Corrected
U : Unacceptable A/W : Acceptable but Monitor & Maintain

+ Issue Type
Ma : Maintenance Deficiency
Ob : Design & System Obsolescence
En : Enforcement

**Flood Control Project Maintenance
Levee Inspections**

Levee Inspection Report By Mile - Spring 2021

Sacramento Maintenance Yard Maintenance Area 0004

Waterway	Bank	Unit Miles	Inspection Start/End	Inspector
Unit No. 01 Sacramento River	Right	3.47	04/21/2021 04/21/2021	Saskia Donovan

LM Start	2.20	Rating **	C	Issue No.	49
LM End	2.23	Issue Type +	Ma	Location *	WS
Category	Earthen Levee			GPS Latitude/Longitude	
				Start	End
Item	Vegetation			38.597645 °	38.597282 °
				-121.513013 °	-121.513248 °
DWR ID	DWR_MA0004_01_f _ 2020_49				
Comment Code					
V2 : Remove the wild growth other than native grasses from the levee slopes.					
Inspector Comment					
The wild growth within the easement has been cut. Spring 2021.					

No Photos

LM Start	2.30	Rating **	C	Issue No.	50
LM End	2.35	Issue Type +	Ma	Location *	WS
Category	Earthen Levee			GPS Latitude/Longitude	
				Start	End
Item	Vegetation			38.596205 °	38.595547 °
				-121.513050 °	-121.512642 °
DWR ID	DWR_MA0004_01_f _ 2020_50				
Comment Code					
V2 : Remove the wild growth other than native grasses from the levee slopes.					
Inspector Comment					
The wild growth has been trimmed. Spring 2021.					

No Photos

* Location LS : Land Side N/A : Not Applicable WS : Water Side CR : Crown	** Rating A : Acceptable M : Minimally Acceptable U : Unacceptable	N : Not Inspected/Rated C : Corrected A/W : Acceptable but Monitor & Maintain	+ Issue Type Ma : Maintenance Deficiency Ob : Design & System Obsolescence En : Enforcement
--	--	---	---

**Flood Control Project Maintenance
Levee Inspections**

Levee Inspection Report By Mile - Spring 2021

Sacramento Maintenance Yard Maintenance Area 0004

Waterway	Bank	Unit Miles	Inspection Start/End	Inspector
Unit No. 01 Sacramento River	Right	3.47	04/21/2021 04/21/2021	Saskia Donovan

LM Start	2.41	Rating **	M	Issue No.	29	
LM End	2.41	Issue Type +	En	Location *		
Category	Supplemental			GPS Latitude/Longitude		
				Start		End
Item	DWR UCIP Field Study			38.594680 °		38.594680 °
				-121.512310 °		-121.512310 °
DWR ID	264					
Comment Code						
Inspector Comment						
FS_ID:55298						
DS_ID:264						
EP_NO: 4561						
Repair Type: Non-Urgent						
Crossing Status: Not Found						
UCIP Comments: 10/10/2019 Record updated to Non-Urgent. No inspection records were available to determine status of line through the levee. Crossing not found. Need to contact owner to determine status of crossing. (O.Yakimov - DWR UCIP)						
FIELD_STRUCT_DESC: 2-inch welded, wrapped steel high-pressure natural gas main through the levee, 2.5 feet below the crown. (2-inch welded, wrapped steel high-pressure natural gas main authorized under Permit No. 4561, 1964 - Pacific Gas and Electric Company [PG&E]).						
FS Date: 10/10/2019 3:28:48 PM						

No Photos

LM Start	2.44	Rating **	M	Issue No.	51
LM End	2.44	Issue Type +	Ma	Location *	LS
Category	Earthen Levee			GPS Latitude/Longitude	
				Start	End
Item	Trim / Thin Trees			38.594287 °	38.594287 °
				-121.512228 °	-121.512228 °
DWR ID	DWR_MA0004_01_f _ 2020_51				
Comment Code					
T1 : Trim trees to at least five feet above ground level.					
Inspector Comment					

No Photos

* Location LS : Land Side N/A : Not Applicable WS : Water Side CR : Crown	** Rating A : Acceptable M : Minimally Acceptable U : Unacceptable	N : Not Inspected/Rated C : Corrected A/W : Acceptable but Monitor & Maintain	+ Issue Type Ma : Maintenance Deficiency Ob : Design & System Obsolescence En : Enforcement
--	--	---	---

**Flood Control Project Maintenance
Levee Inspections**

Levee Inspection Report By Mile - Spring 2021

Sacramento Maintenance Yard Maintenance Area 0004

Waterway	Bank	Unit Miles	Inspection Start/End	Inspector
Unit No. 01 Sacramento River	Right	3.47	04/21/2021 04/21/2021	Saskia Donovan

LM Start	2.59	Rating **	M	Issue No.	30
LM End	2.59	Issue Type +	En	Location *	
Category	Supplemental			GPS Latitude/Longitude	
				Start	End
Item	DWR UCIP Field Study			38.592220 °	38.592220 °
				-121.511750 °	-121.511750 °
DWR ID	254				
Comment Code					
Inspector Comment					
FS_ID:55299 DS_ID:254 EP_NO: N/A Repair Type: Non-Urgent Crossing Status: Not Found UCIP Comments: 10/10/2019 Record remains Non-Urgent. Crossing not found. Unable to locate a permit and confirm proper pipe abandonment. Unauthorized encroachment recorded in Levee Log prior to 2011. (O.Yakimov - DWR UCIP) FIELD_STRUCT_DESC: 48-inch corrugated metal drainage pipe through the levee, 24.2 feet below the crown. Pipe has been grouted. [Additional Reference(s): DWR Levee Log, 2005 (HLM 2.56)]. FS Date: 10/10/2019 3:31:13 PM					

No Photos

LM Start	2.65	Rating **	C	Issue No.	22
LM End	2.65	Issue Type +	Ma	Location *	LS
Category	Earthen Levee			GPS Latitude/Longitude	
				Start	End
Item	Slope Stability			38.591380 °	38.591380 °
				-121.511345 °	-121.511345 °
DWR ID	DWR_MA0004_01_f_2015_22				
Comment Code					
S2 : Repair the levee slope damaged by foot traffic and prevent access where possible.					
Inspector Comment					
The slope instability has been repaired. Spring 2021.					

No Photos

* Location LS : Land Side N/A : Not Applicable WS : Water Side CR : Crown	** Rating A : Acceptable M : Minimally Acceptable U : Unacceptable	N : Not Inspected/Rated C : Corrected A/W : Acceptable but Monitor & Maintain	+ Issue Type Ma : Maintenance Deficiency Ob : Design & System Obsolescence En : Enforcement
--	--	---	---

**Flood Control Project Maintenance
Levee Inspections**

Levee Inspection Report By Mile - Spring 2021

Sacramento Maintenance Yard Maintenance Area 0004

Waterway	Bank	Unit Miles	Inspection Start/End	Inspector
Unit No. 01 Sacramento River	Right	3.47	04/21/2021 04/21/2021	Saskia Donovan

LM Start	2.69	Rating **	M	Issue No.	31	
LM End	2.69	Issue Type +	En	Location *		
Category	Supplemental			GPS Latitude/Longitude		
				Start		End
Item	DWR UCIP Field Study			38.590910 °		38.590910 °
				-121.510830 °		-121.510830 °
DWR ID	19405					
Comment Code						
Inspector Comment						
FS_ID:58715 DS_ID:19405 EP_NO: N/A Repair Type: Non-Urgent Crossing Status: Found UCIP Comments: 10/10/2019 Record remains Non-Urgent. No permit for this crossing was found. A public restroom on WS and a manhole located on road shoulder may be associated with this crossing. (O.Yakimov - DWR UCIP) 09/12/2012 Found during the field survey, not listed in the desk study. (P. Amatya - DWR UCIP) FIELD_STRUCT_DESC: 6-inch steel sewer line from the public facility of the boat launching area. No other details available. FS Date: 10/10/2019 3:32:00 PM						

LM Start	2.69	Rating **	M	Issue No.	31 (cont)
LM End	2.69	Issue Type +	En	Location *	

Photo 1 of 3 : UCIP_SP_2021_58715_81531.jpg



Manhole on the road shoulder on LS

Photo 2 of 3 : UCIP_SP_2021_58715_81532.jpg



Public restroom on WS

* Location LS : Land Side N/A : Not Applicable WS : Water Side CR : Crown	** Rating A : Acceptable M : Minimally Acceptable U : Unacceptable	N : Not Inspected/Rated C : Corrected A/W : Acceptable but Monitor & Maintain	+ Issue Type Ma : Maintenance Deficiency Ob : Design & System Obsolescence En : Enforcement
--	--	---	---

**Flood Control Project Maintenance
Levee Inspections**

Levee Inspection Report By Mile - Spring 2021

Sacramento Maintenance Yard Maintenance Area 0004

Waterway	Bank	Unit Miles	Inspection Start/End	Inspector
Unit No. 01 Sacramento River	Right	3.47	04/21/2021 04/21/2021	Saskia Donovan

LM Start	2.69	Rating **	M	Issue No.	31 (cont)
LM End	2.69	Issue Type +	En	Location *	
Category	Supplemental		GPS Latitude/Longitude		
			Start	End	
Item	DWR UCIP Field Study		38.590910 °	38.590910 °	
			-121.510830 °	-121.510830 °	
DWR ID	19405				

Photo 3 of 3 : UCIP_SP_2021_58715_83349.jpg



Older photo of a manhole on the road shoulder on LS

LM Start	2.70	Rating **	M	Issue No.	53
LM End	2.70	Issue Type +	Ma	Location *	CR
Category	Earthen Levee			GPS Latitude/Longitude	
				Start	End
Item	Repair Gates			38.590877 °	38.590877 °
				-121.510810 °	-121.510810 °
DWR ID	DWR_MA0004_01_f _ 2020_53				
Comment Code					
Inspector Comment					
Replace lock that may be damaged from tampering.					

No Photos

LM Start	2.70	Rating **	A/W	Issue No.	17
LM End	2.70	Issue Type +	Ma	Location *	LS
Category	Earthen Levee			GPS Latitude/Longitude	
				Start	End
Item	Slope Stability			38.590802 °	38.590802 °
				-121.510736 °	-121.510736 °
DWR ID	DWR_MA0004_01_f_2018_17				
Comment Code					
S3 : Repair the levee slope damaged by vehicle traffic and prevent access where possible.					
Inspector Comment					
Monitor slope damage from vehicular traffic bypassing gate. Consider placement of a barrier.					

Photo 1 of 1 : SP_2021_MA0004_298_17_20210223_00006.jpg



View of slope damage from vehicular traffic bypassing gate. Fall 2018

* Location
LS : Land Side N/A : Not Applicable
WS : Water Side
CR : Crown

** Rating
A : Acceptable N : Not Inspected/Rated
M : Minimally Acceptable C : Corrected
U : Unacceptable A/W : Acceptable but Monitor & Maintain

+ Issue Type
Ma : Maintenance Deficiency
Ob : Design & System Obsolescence
En : Enforcement

**Flood Control Project Maintenance
Levee Inspections**

Levee Inspection Report By Mile - Spring 2021

Sacramento Maintenance Yard Maintenance Area 0004

Waterway	Bank	Unit Miles	Inspection Start/End	Inspector
Unit No. 01 Sacramento River	Right	3.47	04/21/2021 04/21/2021	Saskia Donovan

LM Start	2.78	Rating **	M	Issue No.	32	
LM End	2.78	Issue Type +	En	Location *		
Category	Supplemental			GPS Latitude/Longitude		
				Start		End
Item	DWR UCIP Field Study			38.590111 °		38.590111 °
				-121.509695 °		-121.509695 °
DWR ID	19406					
Comment Code						
Inspector Comment						
FS_ID:58716 DS_ID:19406 EP_NO: N/A Repair Type: Non-Urgent Crossing Status: Found UCIP Comments: 10/10/2019 Record remains Non-Urgent. No permit for this crossing was found. (O.Yakimov - DWR UCIP) 09/12/2012 Found during field survey. Not listed in the desk study. (P. Amatya - DWR UCIP) FIELD_STRUCT_DESC: 1 of 2: 3-inch wrapped galvanized iron (GI) water pipe through the levee, at an unknown depth. Pipe daylights in a metal cage box. Valve box for the pipe is also found. FS Date: 10/10/2019 11:45:00 AM						

LM Start	2.78	Rating **	M	Issue No.	32 (cont)
LM End	2.78	Issue Type +	En	Location *	

Photo 1 of 3 : UCIP_SP_2021_58716_81566.jpg



Waterside view: a control valve box with a metal lid

Photo 2 of 3 : UCIP_SP_2021_58716_81567.jpg



Waterside view: pipe daylights in a metal cage

* Location LS : Land Side N/A : Not Applicable WS : Water Side CR : Crown	** Rating A : Acceptable M : Minimally Acceptable U : Unacceptable	N : Not Inspected/Rated C : Corrected A/W : Acceptable but Monitor & Maintain	+ Issue Type Ma : Maintenance Deficiency Ob : Design & System Obsolescence En : Enforcement
--	--	---	---

Levee Inspection Report By Mile - Spring 2021

Waterway	Bank	Unit Miles	Inspection Start/End	Inspector
Unit No. 01 Sacramento River	Right	3.47	04/21/2021 04/21/2021	Saskia Donovan

Photo 3 of 3 : UCIP_SP_2021_58716_81568.jpg



View of landside at the crossing

Photo 1 of 3 : UCIP_SP_2021_59816_81569.jpg



Levee crown at the crossing

* Location	** Rating	+ Issue Type
LS : Land Side N/A : Not Applicable WS : Water Side CR : Crown	A : Acceptable N : Not Inspected/Rated M : Minimally Acceptable C : Corrected U : Unacceptable A/W : Acceptable but Monitor & Maintain	Ma : Maintenance Deficiency Ob : Design & System Obsolescence En : Enforcement

**Flood Control Project Maintenance
Levee Inspections**

Levee Inspection Report By Mile - Spring 2021

Sacramento Maintenance Yard Maintenance Area 0004

Waterway	Bank	Unit Miles	Inspection Start/End	Inspector
Unit No. 01 Sacramento River	Right	3.47	04/21/2021 04/21/2021	Saskia Donovan

LM Start	2.78	Rating **	M	Issue No.	33 (cont)
LM End	2.78	Issue Type +	En	Location *	
Category	Supplemental		GPS Latitude/Longitude		
			Start	End	
Item	DWR UCIP Field Study		38.590105 °	38.590105 °	
			-121.509687 °	-121.509687 °	
DWR ID	19407				

Photo 2 of 3 : UCIP_SP_2021_59816_81570.jpg



Waterside view: a control valve box with a metal lid

LM Start	2.78	Rating **	M	Issue No.	33 (cont)
LM End	2.78	Issue Type +	En	Location *	

Photo 3 of 3 : UCIP_SP_2021_59816_81571.jpg



Waterside view: pipe daylights in a metal cage

* Location LS : Land Side N/A : Not Applicable WS : Water Side CR : Crown	** Rating A : Acceptable M : Minimally Acceptable U : Unacceptable	N : Not Inspected/Rated C : Corrected A/W : Acceptable but Monitor & Maintain	+ Issue Type Ma : Maintenance Deficiency Ob : Design & System Obsolescence En : Enforcement
--	--	---	---

**Flood Control Project Maintenance
Levee Inspections**

Levee Inspection Report By Mile - Spring 2021

Sacramento Maintenance Yard Maintenance Area 0004

Waterway	Bank	Unit Miles	Inspection Start/End	Inspector
Unit No. 01 Sacramento River	Right	3.47	04/21/2021 04/21/2021	Saskia Donovan

LM Start	2.78	Rating **	M	Issue No.	34
LM End	2.78	Issue Type +	En	Location *	
Category	Supplemental			GPS Latitude/Longitude	
				Start	End
Item	DWR UCIP Field Study			38.590100 °	38.590100 °
				-121.509693 °	-121.509693 °
DWR ID	265				
Comment Code					
Inspector Comment					
FS_ID:55310 DS_ID:265 EP_NO: 14527 Repair Type: Non-Urgent Crossing Status: Indicator Found UCIP Comments: 10/10/2019 Record updated from No Action Needed to Non-Urgent. No maintenance records available for this crossing. (O.Yakimov - DWR UCIP) FIELD_STRUCT_DESC: 12-inch coated steel petroleum pipeline, 3 feet below the crown. Gas/petroleum line markers found on both sides of the levee. (12.75-inch welded steel pipeline authorized under Permit No. 14527, 1987 - Southern Pacific Pipe Lines, Inc.). FS Date: 10/10/2019 10:44:29 AM					

Photo 1 of 3 : UCIP_SP_2021_55310_81562.jpg



View of levee crown at crossing

LM Start	2.78	Rating **	M	Issue No.	34 (cont)
LM End	2.78	Issue Type +	En	Location *	

Photo 2 of 3 : UCIP_SP_2021_55310_81564.jpg



Petroleum line marker on WS

* Location LS : Land Side N/A : Not Applicable WS : Water Side CR : Crown	** Rating A : Acceptable M : Minimally Acceptable U : Unacceptable	N : Not Inspected/Rated C : Corrected A/W : Acceptable but Monitor & Maintain	+ Issue Type Ma : Maintenance Deficiency Ob : Design & System Obsolescence En : Enforcement
--	--	---	---

**Flood Control Project Maintenance
Levee Inspections**

Levee Inspection Report By Mile - Spring 2021

Sacramento Maintenance Yard Maintenance Area 0004

Waterway	Bank	Unit Miles	Inspection Start/End	Inspector
Unit No. 01 Sacramento River	Right	3.47	04/21/2021 04/21/2021	Saskia Donovan

LM Start	2.78	Rating **	M	Issue No.	34 (cont)
LM End	2.78	Issue Type +	En	Location *	
Category	Supplemental		GPS Latitude/Longitude		
			Start	End	
Item	DWR UCIP Field Study		38.590100 °	38.590100 °	
			-121.509693 °	-121.509693 °	
DWR ID	265				

Photo 3 of 3 : UCIP_SP_2021_55310_81565.jpg



Petroleum line marker and ramp on LS

LM Start	2.89	Rating **	M	Issue No.	44
LM End	2.89	Issue Type +	En	Location *	LS
Category	Earthen Levee			GPS Latitude/Longitude	
				Start	End
Item	Encroachments			38.589183 °	38.589183 °
				-121.508032 °	-121.508032 °
DWR ID	DWR_MA0004_01_s_2021_44				
Comment Code					
TR : Tree or limb					
Inspector Comment					
Two tree limbs are encroaching on the LS levee easement. Spring 2021.					

Photo 1 of 1 : SP_2021_MA0004_298_44_20210504_00066.jpg



View of the tree limbs on the LS levee toe. Spring 2021.

* Location LS : Land Side N/A : Not Applicable WS : Water Side CR : Crown	** Rating A : Acceptable M : Minimally Acceptable U : Unacceptable	N : Not Inspected/Rated C : Corrected A/W : Acceptable but Monitor & Maintain	+ Issue Type Ma : Maintenance Deficiency Ob : Design & System Obsolescence En : Enforcement
--	--	---	---

**Flood Control Project Maintenance
Levee Inspections**

Levee Inspection Report By Mile - Spring 2021

Sacramento Maintenance Yard Maintenance Area 0004

Waterway	Bank	Unit Miles	Inspection Start/End	Inspector
Unit No. 01 Sacramento River	Right	3.47	04/21/2021 04/21/2021	Saskia Donovan

LM Start	2.91	Rating **	M	Issue No.	35	
LM End	2.91	Issue Type +	En	Location *		
Category	Supplemental			GPS Latitude/Longitude		
				Start	End	
Item	DWR UCIP Field Study			38.588920 °	38.588920 °	
				-121.507920 °	-121.507920 °	
DWR ID	18884					
Comment Code						
Inspector Comment						
FS_ID:59772 DS_ID:18884 EP_NO: N/A Repair Type: Non-Urgent Crossing Status: Not Found UCIP Comments: 10/10/2019 Record remains Non-Urgent. Crossing not found. No permit has been identified authorizing pipe. (O.Yakimov - DWR UCIP) FIELD_STRUCT_DESC: 1 of 4: 3-inch pipe of an unknown material or purpose through the levee, 18.6 feet below the crown. Pipe exposed and extends 10 feet from the bank and 5 feet above current water surface. Needs to be removed or grouted. [Additional Reference(s): DWR Levee Log, 2005 (HLM 2.88). USACE Sacramento O&M Manual, Unit 116, August 1955, Revised 29 Dec 2016, (RM 59.65), listed as one 3-inch, one 10-inch steel, and two 7-inch pipes; no USACE As-Built Drawing found for these pipes] FS Date: 10/10/2019 1:01:00 PM						

No Photos

LM Start	2.92	Rating **	U	Issue No.	23
LM End	2.95	Issue Type +	En	Location *	LS
Category	Earthen Levee			GPS Latitude/Longitude	
				Start	End
Item	Encroachments			38.588762 °	38.588384 °
				-121.507951 °	-121.507894 °
DWR ID	DWR_MA0004_01_f _ 2016_23				
Comment Code					
FE : Fence					
Inspector Comment					

Photo 1 of 1 : SP_2021_MA0004_298_23_20210504_00065.jpg



View of the fence on the LS levee slope. Spring 2021.

* Location LS : Land Side N/A : Not Applicable WS : Water Side CR : Crown	** Rating A : Acceptable M : Minimally Acceptable U : Unacceptable	N : Not Inspected/Rated C : Corrected A/W : Acceptable but Monitor & Maintain	+ Issue Type Ma : Maintenance Deficiency Ob : Design & System Obsolescence En : Enforcement
--	--	---	---

**Flood Control Project Maintenance
Levee Inspections**

Levee Inspection Report By Mile - Spring 2021

Sacramento Maintenance Yard Maintenance Area 0004

Waterway	Bank	Unit Miles	Inspection Start/End	Inspector
Unit No. 01 Sacramento River	Right	3.47	04/21/2021 04/21/2021	Saskia Donovan

LM Start	2.92	Rating **	M	Issue No.	28
LM End	2.92	Issue Type +	Ma	Location *	WS
Category	Earthen Levee			GPS Latitude/Longitude	
				Start	End
Item	Slope Stability			38.588740 °	38.588740 °
				-121.507894 °	-121.507894 °
DWR ID	DWR_MA0004_01_f_2018_28				
Comment Code					
S1 : Repair slope instability.					
Inspector Comment					
The LMA repaired some slope damage in the area, but a large hole 1' deep was dug into the levee slope.					

Photo 1 of 1 : SP_2021_MA0004_298_28_20210223_00011.jpg



View of a hole dug into the waterside slope. Spring 2020

LM Start	2.92	Rating **	C	Issue No.	54
LM End	2.92	Issue Type +	En	Location *	WS
Category	Earthen Levee			GPS Latitude/Longitude	
				Start	End
Item	Encroachments			38.588713 °	38.588713 °
				-121.507920 °	-121.507920 °
DWR ID	DWR_MA0004_01_f_2020_54				
Comment Code					
DE : Debris					
Inspector Comment					
The camp is no longer present. Spring 2021.					

No Photos

* Location LS : Land Side N/A : Not Applicable WS : Water Side CR : Crown	** Rating A : Acceptable M : Minimally Acceptable U : Unacceptable	N : Not Inspected/Rated C : Corrected A/W : Acceptable but Monitor & Maintain	+ Issue Type Ma : Maintenance Deficiency Ob : Design & System Obsolescence En : Enforcement
--	--	---	---

**Flood Control Project Maintenance
Levee Inspections**

Levee Inspection Report By Mile - Spring 2021

Sacramento Maintenance Yard Maintenance Area 0004

Waterway	Bank	Unit Miles	Inspection Start/End	Inspector
Unit No. 01 Sacramento River	Right	3.47	04/21/2021 04/21/2021	Saskia Donovan

LM Start	2.93	Rating **	M	Issue No.	36
LM End	2.93	Issue Type +	En	Location *	
Category	Supplemental			GPS Latitude/Longitude	
				Start	End
Item	DWR UCIP Field Study			38.588688 °	38.588688 °
				-121.507910 °	-121.507910 °
DWR ID	18886				

Comment Code

Inspector Comment

FS_ID:59773
DS_ID:18886
EP_NO: N/A
Repair Type: Non-Urgent
Crossing Status: Found
UCIP Comments: 10/10/2019 Record remains Non-Urgent. Crossing appears abandoned. No permit has been identified authorizing pipe. Pipe end is visible on river's edge. Homeless people installed camping tents nearby. Geophysical results did not confirm presence of pipe through levee. Record will remain in UCIP's inspection records until future Levee Improvement Project can confirm no crossing was found through the levee. Unable to locate a permit and confirm proper pipe abandonment. (O.Yakimov - DWR UCIP) 09/12/2012 Grouted 10-inch pipe on water side of the levee. (P.Amatya - DWR UCIP)
FIELD_STRUCT_DESC: 2 of 4: 10-inch pipe of an unknown material or purpose through the levee, 18.6 feet below the crown. Pipe exposed and extends 10 feet from the bank and 5 feet above current water surface. Needs to be removed or grouted. [Additional Reference(s): DWR Levee Log, 2005 (HLM 2.88). USACE Sacramento O&M Manual 116, August 1955, (RM 59.65), listed as one 3-inch, one 10-inch steel, and two 7-inch pipes; no USACE As-Built Drawing found for these pipes].
FS Date: 10/10/2019 1:17:00 PM

LM Start	2.93	Rating **	M	Issue No.	36 (cont)
LM End	2.93	Issue Type +	En	Location *	

Photo 1 of 3 : UCIP_SP_2021_59773_81572.jpg



View of levee crown at crossing

Photo 2 of 3 : UCIP_SP_2021_59773_81574.jpg



Land side view- inside water tower area

* Location LS : Land Side N/A : Not Applicable WS : Water Side CR : Crown	** Rating A : Acceptable M : Minimally Acceptable U : Unacceptable	N : Not Inspected/Rated C : Corrected A/W : Acceptable but Monitor & Maintain	+ Issue Type Ma : Maintenance Deficiency Ob : Design & System Obsolescence En : Enforcement
--	--	--	---

Sacramento Maintenance Yard Maintenance Area 0004

Page 33 of 42

**Flood Control Project Maintenance
Levee Inspections**

Levee Inspection Report By Mile - Spring 2021

Sacramento Maintenance Yard Maintenance Area 0004

Waterway	Bank	Unit Miles	Inspection Start/End	Inspector
Unit No. 01 Sacramento River	Right	3.47	04/21/2021 04/21/2021	Saskia Donovan

LM Start	2.93	Rating **	M	Issue No.	37 (cont)
LM End	2.93	Issue Type +	En	Location *	
Category	Supplemental			GPS Latitude/Longitude	
				Start	End
Item	DWR UCIP Field Study			38.588688 °	38.588688 °
				-121.507910 °	-121.507910 °
DWR ID	18885				

Photo 2 of 3 : UCIP_SP_2021_59775_81579.jpg



Overview of waterside at pipe crossing

LM Start	2.93	Rating **	M	Issue No.	37 (cont)
LM End	2.93	Issue Type +	En	Location *	

Photo 3 of 3 : UCIP_SP_2021_59775_81580.jpg



View inside of water tower area

* Location LS : Land Side N/A : Not Applicable WS : Water Side CR : Crown	** Rating A : Acceptable M : Minimally Acceptable U : Unacceptable	N : Not Inspected/Rated C : Corrected A/W : Acceptable but Monitor & Maintain	+ Issue Type Ma : Maintenance Deficiency Ob : Design & System Obsolescence En : Enforcement
--	--	---	---

**Flood Control Project Maintenance
Levee Inspections**

Levee Inspection Report By Mile - Spring 2021

Sacramento Maintenance Yard Maintenance Area 0004

Waterway	Bank	Unit Miles	Inspection Start/End	Inspector
Unit No. 01 Sacramento River	Right	3.47	04/21/2021 04/21/2021	Saskia Donovan

LM Start	2.93	Rating **	M	Issue No.	38	
LM End	2.93	Issue Type +	En	Location *		
Category	Supplemental			GPS Latitude/Longitude		
				Start	End	
Item	DWR UCIP Field Study			38.588688 °	38.588688 °	
				-121.507910 °	-121.507910 °	
DWR ID	18883					
Comment Code						
Inspector Comment						
FS_ID:59774 DS_ID:18883 EP_NO: N/A Repair Type: Non-Urgent Crossing Status: Found UCIP Comments: 10/10/2019 Record remains Non-Urgent. Crossing appears abandoned. Geophysical results did not confirm presence of pipe through levee. Record will remain in UCIP's inspection records until future Levee Improvement Project can confirm no crossing was found through the levee. No permit has been identified authorizing pipe. (O.Yakimov - DWR UCIP) 09/12/2012 Abandoned 7-inch pipe found. Needs to be abandoned properly. (P. Amatya - DWR UCIP) FIELD_STRUCT_DESC: 3 of 4: 7-inch pipe of an unknown material or purpose through the levee, 18.6 feet below the crown. Unable to locate. Pipe exposed and extends 10 feet from the bank and 5 feet above current water surface. Needs to be removed or grouted. [Additional Reference(s): DWR Levee Log, 2005 (HLM 2.88). USACE Sacramento O&M Manual, Unit 116, August 1955, Revised 29 Dec 2016, (RM 59.65), listed as one 3-inch, one 10-inch steel, and two 7-inch pipes; no USACE As-Built Drawing found for these pipes]. FS Date: 10/10/2019 1:49:00 PM						

LM Start	2.93	Rating **	M	Issue No.	38 (cont)
LM End	2.93	Issue Type +	En	Location *	

Photo 1 of 3 : UCIP_SP_2021_59774_81576.jpg



Land side view: water tower area

Photo 2 of 3 : UCIP_SP_2021_59774_81577.jpg



Overview of waterside at pipe crossing

* Location LS : Land Side N/A : Not Applicable WS : Water Side CR : Crown	** Rating A : Acceptable M : Minimally Acceptable U : Unacceptable	N : Not Inspected/Rated C : Corrected A/W : Acceptable but Monitor & Maintain	+ Issue Type Ma : Maintenance Deficiency Ob : Design & System Obsolescence En : Enforcement
--	--	---	---

**Flood Control Project Maintenance
Levee Inspections**

Levee Inspection Report By Mile - Spring 2021

Sacramento Maintenance Yard Maintenance Area 0004

Waterway	Bank	Unit Miles	Inspection Start/End	Inspector
Unit No. 01 Sacramento River	Right	3.47	04/21/2021 04/21/2021	Saskia Donovan

LM Start	2.93	Rating **	M	Issue No.	38 (cont)
LM End	2.93	Issue Type +	En	Location *	
Category	Supplemental			GPS Latitude/Longitude	
				Start	End
Item	DWR UCIP Field Study			38.588688 °	38.588688 °
				-121.507910 °	-121.507910 °
DWR ID	18883				

Photo 3 of 3 : UCIP_SP_2021_59774_9770.jpg



Land side view- abandoned pipes inside the tower area

LM Start	2.93	Rating **	M	Issue No.	69
LM End	2.93	Issue Type +	Ma	Location *	WS
Category	Earthen Levee			GPS Latitude/Longitude	
				Start	End
Item	Slope Stability			38.588553 °	38.588553 °
				-121.507878 °	-121.507878 °
DWR ID	DWR_MA0004_01_s _ 2020_69				
Comment Code					
S2 : Repair the levee slope damaged by foot traffic and prevent access where possible.					
Inspector Comment					
Stairs are dug into the levee slope.					

No Photos

LM Start	2.94	Rating **	M	Issue No.	55
LM End	2.94	Issue Type +	Ma	Location *	WS
Category	Earthen Levee			GPS Latitude/Longitude	
				Start	End
Item	Animal Control			38.588453 °	38.588453 °
				-121.507837 °	-121.507837 °
DWR ID	DWR_MA0004_01_f _ 2020_55				
Comment Code					
A1 : Exterminate rodents and backfill and compact or grout burrows.					
Inspector Comment					

No Photos

* Location LS : Land Side N/A : Not Applicable WS : Water Side CR : Crown	** Rating A : Acceptable M : Minimally Acceptable U : Unacceptable	N : Not Inspected/Rated C : Corrected A/W : Acceptable but Monitor & Maintain	+ Issue Type Ma : Maintenance Deficiency Ob : Design & System Obsolescence En : Enforcement
--	--	---	---

**Flood Control Project Maintenance
Levee Inspections**

Levee Inspection Report By Mile - Spring 2021

Sacramento Maintenance Yard Maintenance Area 0004

Waterway	Bank	Unit Miles	Inspection Start/End	Inspector
Unit No. 01 Sacramento River	Right	3.47	04/21/2021 04/21/2021	Saskia Donovan

LM Start	2.95	Rating **	M	Issue No.	42
LM End	2.95	Issue Type +	Ma	Location *	WS
Category	Earthen Levee			GPS Latitude/Longitude	
				Start	End
Item	Encroachments			38.588333 °	38.588333 °
				-121.507870 °	-121.507870 °
DWR ID	DWR_MA0004_01_f_2019_42				
Comment Code					
TR : Tree or limb					
Inspector Comment					
Remove large tree debris from the waterside toe.					

No Photos

LM Start	2.99	Rating **	M	Issue No.	39
LM End	2.99	Issue Type +	En	Location *	
Category	Supplemental			GPS Latitude/Longitude	
				Start	End
Item	DWR UCIP Field Study			38.587760 °	38.587760 °
				-121.507930 °	-121.507930 °
DWR ID	266				
Comment Code					
Inspector Comment					
FS_ID:55317 DS_ID:266 EP_NO: 16702 Repair Type: Non-Urgent Crossing Status: Not Found UCIP Comments: 10/10/2019 Record remains Non-Urgent. Crossing not found. (O.Yakimov - DWR UCIP) FIELD_STRUCT_DESC: 4.5-inch polyvinyl chloride (PVC) irrigation pipe through the levee, 2 feet below the crown. Public facilities and four stairways on the levee slope. Observation/fishing dock on the waterside (WS) of the levee. (4-inch irrigation pipe and 1-inch potable water main line authorized under Permit No. 16702, 1997 - City of West Sacramento). FS Date: 10/10/2019 2:36:29 PM					

Photo 1 of 3 : UCIP_SP_2021_55317_81581.jpg



View of levee crown at possible crossing

* Location LS : Land Side N/A : Not Applicable WS : Water Side CR : Crown	** Rating A : Acceptable M : Minimally Acceptable U : Unacceptable	N : Not Inspected/Rated C : Corrected A/W : Acceptable but Monitor & Maintain	+ Issue Type Ma : Maintenance Deficiency Ob : Design & System Obsolescence En : Enforcement
--	--	---	---

**Flood Control Project Maintenance
Levee Inspections**

Levee Inspection Report By Mile - Spring 2021

Sacramento Maintenance Yard Maintenance Area 0004

Waterway	Bank	Unit Miles	Inspection Start/End	Inspector
Unit No. 01 Sacramento River	Right	3.47	04/21/2021 04/21/2021	Saskia Donovan

LM Start	2.99	Rating **	M	Issue No.	39 (cont)
LM End	2.99	Issue Type +	En	Location *	
Category	Supplemental		GPS Latitude/Longitude		
			Start	End	
Item	DWR UCIP Field Study		38.587760 °	38.587760 °	
			-121.507930 °	-121.507930 °	
DWR ID	266				

Photo 2 of 3 : UCIP_SP_2021_55317_81582.jpg



Riverbank near possible crossing

LM Start	2.99	Rating **	M	Issue No.	39 (cont)
LM End	2.99	Issue Type +	En	Location *	

Photo 3 of 3 : UCIP_SP_2021_55317_81583.jpg



View of WS slope at possible crossing

LM Start	3.05	Rating **	M	Issue No.	43
LM End	3.05	Issue Type +	Ma	Location *	WS
Category	Earthen Levee			GPS Latitude/Longitude	
				Start	End
Item	Animal Control			38.586962 °	38.586962 °
				-121.508110 °	-121.508110 °
DWR ID	DWR_MA0004_01_s_2021_43				
Comment Code					
A3 : No rodents visible, but rodent burrows visible; need to backfill and compact or grout burrows.					
Inspector Comment					
A large rodent hole is on the WS levee slope. Spring 2021.					

Photo 1 of 1 : SP_2021_MA0004_298_43_20210504_00064.jpg



View of the rodent hole on the WS levee slope. Spring 2021.

* Location LS : Land Side N/A : Not Applicable WS : Water Side CR : Crown	** Rating A : Acceptable M : Minimally Acceptable U : Unacceptable	N : Not Inspected/Rated C : Corrected A/W : Acceptable but Monitor & Maintain	+ Issue Type Ma : Maintenance Deficiency Ob : Design & System Obsolescence En : Enforcement
--	--	---	---

**Flood Control Project Maintenance
Levee Inspections**

Levee Inspection Report By Mile - Spring 2021

Sacramento Maintenance Yard Maintenance Area 0004

Waterway	Bank	Unit Miles	Inspection Start/End	Inspector
Unit No. 01 Sacramento River	Right	3.47	04/21/2021 04/21/2021	Saskia Donovan

LM Start	3.08	Rating **	M	Issue No.	56
LM End	3.14	Issue Type +	Ma	Location *	LS
Category	Earthen Levee			GPS Latitude/Longitude	
				Start	End
Item	Vegetation			38.586445 °	38.585702 °
				-121.508117 °	-121.508282 °
DWR ID	DWR_MA0004_01_f _ 2020_56				
Comment Code					
V1 : Control annual grass and weeds on the levee slopes and easements.					
Inspector Comment					

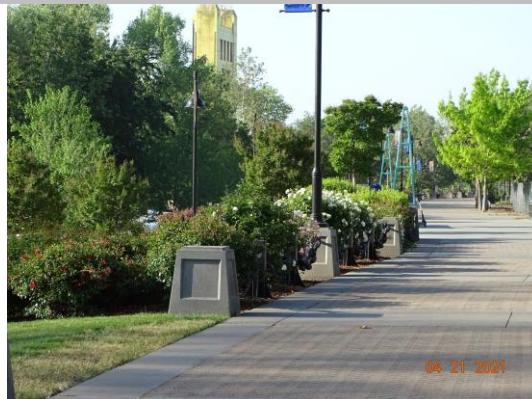
Photo 1 of 1 : SP_2021_MA0004_298_56_20210504_00063.jpg



View of the annual grass on the LS levee slope. Spring 2021.

LM Start	3.08	Rating **	A/W	Issue No.	12
LM End	3.45	Issue Type +	En	Location *	WS
Category	Earthen Levee			GPS Latitude/Longitude	
				Start	End
Item	Vegetation			38.586434 °	38.581349 °
				-121.508090 °	-121.509547 °
DWR ID	DWR_MA0004_01_s _ 2012_12				
Comment Code					
V6 : Landscaping					
Inspector Comment					
West Sacramento's River Walk runs from the Tower Bridge to the I Street bridge.					

Photo 1 of 1 : SP_2021_MA0004_298_12_20210504_00062.jpg



View of the landscaping on River Walk. Spring 2021.

LM Start	3.12	Rating **	C	Issue No.	57
LM End	3.12	Issue Type +	Ma	Location *	LS
Category	Earthen Levee			GPS Latitude/Longitude	
				Start	End
Item	Trim / Thin Trees			38.585956 °	38.585956 °
				-121.508189 °	-121.508189 °
DWR ID	DWR_MA0004_01_f _ 2020_57				
Comment Code					
T1 : Trim trees to at least five feet above ground level.					
Inspector Comment					
The trees have been trimmed. Spring 2021.					

No Photos

* Location LS : Land Side N/A : Not Applicable WS : Water Side CR : Crown	** Rating A : Acceptable M : Minimally Acceptable U : Unacceptable	N : Not Inspected/Rated C : Corrected A/W : Acceptable but Monitor & Maintain	+ Issue Type Ma : Maintenance Deficiency Ob : Design & System Obsolescence En : Enforcement
--	--	---	---

**Flood Control Project Maintenance
Levee Inspections**

Levee Inspection Report By Mile - Spring 2021

Sacramento Maintenance Yard Maintenance Area 0004

Waterway	Bank	Unit Miles	Inspection Start/End	Inspector
Unit No. 01 Sacramento River	Right	3.47	04/21/2021 04/21/2021	Saskia Donovan

LM Start	3.20	Rating **	M	Issue No.	40	
LM End	3.20	Issue Type +	En	Location *		
Category	Supplemental			GPS Latitude/Longitude		
				Start		End
Item	DWR UCIP Field Study			38.584860 °		38.584860 °
				-121.508500 °		-121.508500 °
DWR ID	268					
Comment Code						
Inspector Comment						
FS_ID:55346 DS_ID:268 EP_NO: 17058 Repair Type: Non-Urgent Crossing Status: Not Found UCIP Comments: 10/10/2019 Record updated from No Action Needed to Non-Urgent, unable to determine status of crossing. Crossing not found. (O.Yakimov - DWR UCIP) FIELD_STRUCT_DESC: Three 2-inch and two 1.5-inch fiber optics conduits of an unknown material across and bored under the Sacramento River and its west levee. Note in permit indicates this was not installed. FS Date: 10/10/2019 1:36:42 PM						

Photo 1 of 1 : UCIP_SP_2021_55346_81587.jpg



Paved levee crown at possible crossing

LM Start	3.24	Rating **	M	Issue No.	27
LM End	3.29	Issue Type +	En	Location *	LS
Category	Earthen Levee			GPS Latitude/Longitude	
				Start	End
Item	Encroachments			38.584168 °	38.583435 °
				-121.508632 °	-121.508785 °
DWR ID	DWR_MA0004_01_f_2015_27				
Comment Code					
FE : Fence					
Inspector Comment					
The fence on the levee shoulder appears to be unauthorized.					

Photo 1 of 1 : SP_2021_MA0004_298_27_20210504_00061.jpg



View of the fence on the LS levee shoulder. Spring 2021.

* Location LS : Land Side N/A : Not Applicable WS : Water Side CR : Crown	** Rating A : Acceptable M : Minimally Acceptable U : Unacceptable	N : Not Inspected/Rated C : Corrected A/W : Acceptable but Monitor & Maintain	+ Issue Type Ma : Maintenance Deficiency Ob : Design & System Obsolescence En : Enforcement
--	--	---	---

**Flood Control Project Maintenance
Levee Inspections**

Levee Inspection Report By Mile - Spring 2021

Sacramento Maintenance Yard Maintenance Area 0004

Waterway	Bank	Unit Miles	Inspection Start/End	Inspector
Unit No. 01 Sacramento River	Right	3.47	04/21/2021 04/21/2021	Saskia Donovan

LM Start	3.29	Rating **	M	Issue No.	59
LM End	3.29	Issue Type +	Ma	Location *	WS
Category	Earthen Levee			GPS Latitude/Longitude	
				Start	End
Item	Animal Control			38.583437 °	38.583437 °
				-121.508788 °	-121.508788 °
DWR ID	DWR_MA0004_01_f _ 2020_59				
Comment Code					
A3 : No rodents visible, but rodent burrows visible; need to backfill and compact or grout burrows.					
Inspector Comment					

Photo 1 of 1 : SP_2021_MA0004_298_59_20210504_00060.jpg



View of the rodent hole on the WS levee slope. Spring 2021.

LM Start	3.41	Rating **	A/W	Issue No.	71
LM End	3.42	Issue Type +	Ma	Location *	WS
Category	Earthen Levee			GPS Latitude/Longitude	
				Start	End
Item	Animal Control			38.581798 °	38.581668 °
				-121.509322 °	-121.509382 °
DWR ID	DWR_MA0004_01_s _ 2020_71				
Comment Code					
A3 : No rodents visible, but rodent burrows visible; need to backfill and compact or grout burrows.					
Inspector Comment					
The surface has recently been covered with mulch. There are currently no rodent holes visible, but the area should be monitored. Spring 2021.					

Photo 1 of 1 : SP_2021_MA0004_298_71_20210504_00059.jpg



View of the burrowing area covered with mulch on the WS levee slope. Spring 2021.

* Location LS : Land Side N/A : Not Applicable WS : Water Side CR : Crown		** Rating A : Acceptable N : Not Inspected/Rated M : Minimally Acceptable C : Corrected U : Unacceptable A/W : Acceptable but Monitor & Maintain		+ Issue Type Ma : Maintenance Deficiency Ob : Design & System Obsolescence En : Enforcement	
--	--	---	--	---	--

**Flood Control Project Maintenance
Levee Inspections**

Levee Inspection Report By Mile - Spring 2021

Sacramento Maintenance Yard Maintenance Area 0004

Waterway	Bank	Unit Miles	Inspection Start/End	Inspector
Unit No. 01 Sacramento River	Right	3.47	04/21/2021 04/21/2021	Saskia Donovan

LM Start	3.42	Rating **	M	Issue No.	41	
LM End	3.42	Issue Type +	En	Location *		
Category	Supplemental			GPS Latitude/Longitude		
				Start		End
Item	DWR UCIP Field Study			38.581697 °		38.581697 °
				-121.509358 °		-121.509358 °
DWR ID	271					
Comment Code						
Inspector Comment						
FS_ID:55349 DS_ID:271 EP_NO: 16702 Repair Type: Non-Urgent Crossing Status: Not Found UCIP Comments: 10/10/2019 Record updated from No Action Needed to Non-Urgent, unable to determine status of crossing. Crossing not found. (O.Yakimov - DWR UCIP) FIELD_STRUCT_DESC: 4.5-inch polyvinyl chloride (PVC) irrigation pipe through the levee, 2 feet below the crown. Public facilities and four stairways on the levee slope. Observation/fishing dock on the waterside (WS). (4-inch irrigation pipe and 1-inch potable water main line authorized under Permit No. 16702, 1997 - City of West Sacramento). FS Date: 10/10/2019 1:54:14 PM						

LM Start	3.42	Rating **	M	Issue No.	41 (cont)
LM End	3.42	Issue Type +	En	Location *	

Photo 1 of 2 : UCIP_SP_2021_55349_81591.jpg



View of LS at potential crossing

Photo 2 of 2 : UCIP_SP_2021_55349_81592.jpg



View of WS slope at potential crossing

* Location LS : Land Side N/A : Not Applicable WS : Water Side CR : Crown	** Rating A : Acceptable M : Minimally Acceptable U : Unacceptable	N : Not Inspected/Rated C : Corrected A/W : Acceptable but Monitor & Maintain	+ Issue Type Ma : Maintenance Deficiency Ob : Design & System Obsolescence En : Enforcement
--	--	---	---