

**Flood Control Project Maintenance
Levee Inspections**
LMA District Cover Sheet
Spring 2020 Levee Inspection Results

Sacramento Maintenance Yard Maintenance Area 0004

	Spring (March - May)	Summer ** (June - August)	Fall (September - November)	Winter ** (December - February)
† Overall LMA Rating (Fall Only)				

** Non-receipt of Summer or Winter Inspection
Reports may effect overall annual rating.

† SPRING INSPECTIONS: Overall maintenance ratings are not determined for the spring inspection results. Individual maintenance deficiencies are rated using the same criteria in the spring and in the fall.

FALL INSPECTIONS: The overall maintenance rating shown above is based on operation and maintenance deficiencies identified within the attached unit inspection reports. This rating is not intended to be an indication of risk.

Comments

**Flood Control Project Maintenance
Levee Inspections**

Unit Cover Sheet

Spring 2020 Levee Inspection Results

Sacramento Maintenance Yard Maintenance Area 0004

Waterway			Bank	Unit Miles
Unit No. 01 Sacramento River			Right	3.47
	Spring (March - May)	Summer (June - August)	(September - November) Fall	Winter (December - February)
Unit Maintenance Rating (Fall Only)				
Date of Inspection	4/9/2020 - 4/9/2020			
DWR Inspector	Luz Dial			
Accompanied By				

Summer & Winter Inspections

The Local Maintaining Agency (LMA) is responsible for summer and winter inspections. The LMA is required to submit a report regarding summer and winter inspections to the California Department of Water Resources (DWR).

DWR must be informed on the:

- a) completion of the inspection
- b) any changes other than the results of normal maintenance
- c) corrections to deficiencies noted in this report

If additional items are noted, further documentation of those items must also be submitted.

The LMA should submit this information to DWR using the LMA web application tool available at:

<http://cdec.water.ca.gov/lma.html>

If the LMA is unable to submit information on this webpage, please contact DWR for assistance.

The LMA should submit the information and any associated documentation by September 30 for summer inspections and March 31 for winter inspections.

**Flood Control Project Maintenance
Levee Inspections**

Levee Inspection Report By Mile - Spring 2020

Sacramento Maintenance Yard Maintenance Area 0004

Waterway	Bank	Unit Miles	Inspection Start/End	Inspector
Unit No. 01 Sacramento River	Right	3.47	04/09/2020 04/09/2020	Luz Dial

LM Start		Rating **	A	Issue No.	9
LM End		Issue Type +	Ma	Location *	
Category	Earthen Levee		GPS Latitude/Longitude		
			Start	End	
Item	Operations & Maintenance Manuals			°	°
				°	°
DWR ID	DWR_MA0004_01_s _ 2013_9				
Comment Code					
Inspector Comment					
The Sacramento Maintenance Yard has copies of their O&M manuals.					

No Photos

LM Start		Rating **	A	Issue No.	10
LM End		Issue Type +	Ma	Location *	
Category	Earthen Levee		GPS Latitude/Longitude		
			Start	End	
Item	Emergency Supplies & Equipment			°	°
				°	°
DWR ID	DWR_MA0004_01_s _ 2013_10				
Comment Code					
Inspector Comment					
The Sacramento Maintenance Yard has a stockpile of flood response material.					

No Photos

LM Start		Rating **	A	Issue No.	11
LM End		Issue Type +	Ma	Location *	
Category	Earthen Levee		GPS Latitude/Longitude		
			Start	End	
Item	Flood Preparedness & Training			°	°
				°	°
DWR ID	DWR_MA0004_01_s _ 2013_11				
Comment Code					
Inspector Comment					
The Sacramento Maintenance Yard has a written flood response plan and flood response training.					

No Photos

* Location LS : Land Side N/A : Not Applicable WS : Water Side CR : Crown	** Rating A : Acceptable M : Minimally Acceptable U : Unacceptable	N : Not Inspected/Rated C : Corrected A/W : Acceptable but Monitor & Maintain	+ Issue Type Ma : Maintenance Deficiency Ob : Design & System Obsolescence En : Enforcement
--	--	---	---

**Flood Control Project Maintenance
Levee Inspections**

Levee Inspection Report By Mile - Spring 2020

Sacramento Maintenance Yard Maintenance Area 0004

Waterway	Bank	Unit Miles	Inspection Start/End	Inspector
Unit No. 01 Sacramento River	Right	3.47	04/09/2020 04/09/2020	Luz Dial

LM Start	0.00	Rating **	C	Issue No.	16
LM End	0.00	Issue Type +	Ma	Location *	WS
Category	Earthen Levee			GPS Latitude/Longitude	
				Start	End
Item	Slope Stability			38.596823 °	38.596823 °
				-121.547608 °	-121.547608 °
DWR ID	DWR_MA0004_01_s _ 2016_16				
Comment Code					
S2 : Repair the levee slope damaged by foot traffic and prevent access where possible.					
Inspector Comment					

No Photos

LM Start	0.02	Rating **	M	Issue No.	59
LM End	0.03	Issue Type +	Ma	Location *	LS
Category	Earthen Levee			GPS Latitude/Longitude	
				Start	End
Item	Vegetation			38.596718 °	38.596663 °
				-121.547300 °	-121.547002 °
DWR ID	DWR_MA0004_01_s _ 2020_59				
Comment Code					
V1 : Control annual grass and weeds on the levee slopes and easements.					
Inspector Comment					

No Photos

LM Start	0.15	Rating **	C	Issue No.	6
LM End	0.15	Issue Type +	Ma	Location *	WS
Category	Earthen Levee			GPS Latitude/Longitude	
				Start	End
Item	Slope Stability			38.596654 °	38.596654 °
				-121.544791 °	-121.544791 °
DWR ID	DWR_MA0004_01_s _ 2020_6				
Comment Code					
S2 : Repair the levee slope damaged by foot traffic and prevent access where possible.					
Inspector Comment					

No Photos

* Location LS : Land Side N/A : Not Applicable WS : Water Side CR : Crown	** Rating A : Acceptable M : Minimally Acceptable U : Unacceptable	N : Not Inspected/Rated C : Corrected A/W : Acceptable but Monitor & Maintain	+ Issue Type Ma : Maintenance Deficiency Ob : Design & System Obsolescence En : Enforcement
--	--	---	---

**Flood Control Project Maintenance
Levee Inspections**

Levee Inspection Report By Mile - Spring 2020

Sacramento Maintenance Yard Maintenance Area 0004

Waterway	Bank	Unit Miles	Inspection Start/End	Inspector
Unit No. 01 Sacramento River	Right	3.47	04/09/2020 04/09/2020	Luz Dial

LM Start	0.16	Rating **	C	Issue No.	36
LM End	0.16	Issue Type +	Ma	Location *	WS
Category	Earthen Levee			GPS Latitude/Longitude	
				Start	End
Item	Encroachments			38.596677 °	38.596677 °
				-121.544635 °	-121.544635 °
DWR ID	DWR_MA0004_01_f _ 2019_36				
Comment Code					
DE : Debris					
Inspector Comment					

No Photos

LM Start	0.20	Rating **	M	Issue No.	58
LM End	0.20	Issue Type +	Ma	Location *	CR
Category	Earthen Levee			GPS Latitude/Longitude	
				Start	End
Item	Encroachments			38.596888 °	38.596888 °
				-121.543928 °	-121.543928 °
DWR ID	DWR_MA0004_01_s_2020_58				
Comment Code					
DE : Debris					
Inspector Comment					

No Photos

LM Start	0.21	Rating **	A/W	Issue No.	7
LM End	0.22	Issue Type +	Ma	Location *	WS
Category	Earthen Levee			GPS Latitude/Longitude	
				Start	End
Item	Slope Stability			38.596840 °	38.596947 °
				-121.543848 °	-121.543727 °
DWR ID	DWR_MA0004_01_s_2019_7				
Comment Code					
S2 : Repair the levee slope damaged by foot traffic and prevent access where possible.					
Inspector Comment					
Monitor footpath and erosion on the waterside berm.					

Photo 1 of 1 : SP_2020_MA0004_298_7_20200302_00002.jpg



View looking north at footpath and erosion rills. Spring 2019

* Location LS : Land Side N/A : Not Applicable WS : Water Side CR : Crown	** Rating A : Acceptable M : Minimally Acceptable U : Unacceptable	N : Not Inspected/Rated C : Corrected A/W : Acceptable but Monitor & Maintain	+ Issue Type Ma : Maintenance Deficiency Ob : Design & System Obsolescence En : Enforcement
--	--	---	---

**Flood Control Project Maintenance
Levee Inspections**

Levee Inspection Report By Mile - Spring 2020

Sacramento Maintenance Yard Maintenance Area 0004

Waterway	Bank	Unit Miles	Inspection Start/End	Inspector
Unit No. 01 Sacramento River	Right	3.47	04/09/2020 04/09/2020	Luz Dial

LM Start	0.24	Rating **	U	Issue No.	2
LM End	0.24	Issue Type +	En	Location *	CR
Category	Earthen Levee			GPS Latitude/Longitude	
				Start	End
Item	Encroachments			38.597193 °	38.597193 °
				-121.543421 °	-121.543421 °
DWR ID	DWR_MA0004_01_s_2012_2				
Comment Code					
FE : Fence					
Inspector Comment					
This is the USACE yard, and the chain link fence crosses the levee. The fence runs the length of the yard on the crown.					

Photo 1 of 1 : SP_2020_MA0004_298_2_20200302_00001.jpg



View of the fence blocking access on the crown of the levee looking downstream. Fall 2015.

LM Start	0.25	Rating **	M	Issue No.	72	
LM End	0.25	Issue Type +	En	Location *		
Category	Supplemental			GPS Latitude/Longitude		
				Start		End
Item	DWR UCIP Field Study			38.597277 °		38.597277 °
				-121.543264 °		-121.543264 °
DWR ID	25546					
Comment Code						
Inspector Comment						
DS_ID:25546						
FS_ID:54261						
EP_NO: N/A						
Repair Type: Non-Urgent						
Crossing Status: Found						
UCIP Comments: 09/07/2018 Sediment clearing at pipe inlet is required. Pipe outlet is not visible on WS. O&M legacy system pipe. (O.Yakimov - DWR UCIP)						
FIELD_STRUCT_DESC: 12-inch corrugated metal drainage pipe through the levee, 19.0 feel below levee crown. [Additional Reference(s): USACE Sacramento O&M Manual 116, August 1955, Dwg No. 50-4-4179, page 9 of 19].						
FS Date: 9/7/2018						

Photo 1 of 3 : UCIP_SP_2020_54261_80009.jpg



Levee crown near crossing

*** Location**

LS : Land Side N/A : Not Applicable
WS : Water Side
CR : Crown

**** Rating**

A : Acceptable N : Not Inspected/Rated
M : Minimally Acceptable C : Corrected
U : Unacceptable A/W : Acceptable but Monitor & Maintain

+ Issue Type

Ma : Maintenance Deficiency
Ob : Design & System Obsolescence
En : Enforcement

**Flood Control Project Maintenance
Levee Inspections**

Levee Inspection Report By Mile - Spring 2020

Sacramento Maintenance Yard Maintenance Area 0004

Waterway	Bank	Unit Miles	Inspection Start/End	Inspector
Unit No. 01 Sacramento River	Right	3.47	04/09/2020 04/09/2020	Luz Dial

LM Start	0.25	Rating **	M	Issue No.	72 (cont)
LM End	0.25	Issue Type +	En	Location *	
Category	Supplemental		GPS Latitude/Longitude		
			Start	End	
Item	DWR UCIP Field Study		38.597277 °	38.597277 °	
			-121.543264 °	-121.543264 °	
DWR ID	25546				

Photo 2 of 3 : UCIP_SP_2020_54261_80011.jpg



Covered concrete box at LS toe

LM Start	0.25	Rating **	M	Issue No.	72 (cont)
LM End	0.25	Issue Type +	En	Location *	

Photo 3 of 3 : UCIP_SP_2020_54261_80012.jpg



Pipe inlet concrete box is covered with metal sheeting

* Location LS : Land Side N/A : Not Applicable WS : Water Side CR : Crown	** Rating A : Acceptable M : Minimally Acceptable U : Unacceptable	N : Not Inspected/Rated C : Corrected A/W : Acceptable but Monitor & Maintain	+ Issue Type Ma : Maintenance Deficiency Ob : Design & System Obsolescence En : Enforcement
--	--	---	---

**Flood Control Project Maintenance
Levee Inspections**

Levee Inspection Report By Mile - Spring 2020

Sacramento Maintenance Yard Maintenance Area 0004

Waterway	Bank	Unit Miles	Inspection Start/End	Inspector
Unit No. 01 Sacramento River	Right	3.47	04/09/2020 04/09/2020	Luz Dial

LM Start	0.32	Rating **	M	Issue No.	73
LM End	0.32	Issue Type +	En	Location *	
Category	Supplemental			GPS Latitude/Longitude	
				Start	End
Item	DWR UCIP Field Study			38.597915 °	38.597915 °
				-121.542264 °	-121.542264 °
DWR ID	25545				
Comment Code					
Inspector Comment					
DS_ID:25545 FS_ID:54262 EP_NO: N/A Repair Type: Non-Urgent Crossing Status: Found UCIP Comments: 09/07/2018 Record remains Non-Urgent. Pipe not visible at WS slope. No permit has been identified authorizing pipe. (O.Yakimov - DWR UCIP) FIELD_STRUCT_DESC: 12-inch corrugated metal drainage pipe through the levee, 23.3 feel below levee crown. [Additional Reference(s): USACE Sacramento O&M Manual 116, August 1955, Dwg No. 50-4-4179, page 9 of 19]. FS Date: 9/7/2018					

Photo 1 of 3 : UCIP_SP_2020_54262_80017.jpg



Drainage pit at LS toe

LM Start	0.32	Rating **	M	Issue No.	73 (cont)
LM End	0.32	Issue Type +	En	Location *	

Photo 2 of 3 : UCIP_SP_2020_54262_80018.jpg



Structures at LS toe where drainage pit is located

* Location LS : Land Side N/A : Not Applicable WS : Water Side CR : Crown	** Rating A : Acceptable M : Minimally Acceptable U : Unacceptable	N : Not Inspected/Rated C : Corrected A/W : Acceptable but Monitor & Maintain	+ Issue Type Ma : Maintenance Deficiency Ob : Design & System Obsolescence En : Enforcement
--	--	---	---

**Flood Control Project Maintenance
Levee Inspections**

Levee Inspection Report By Mile - Spring 2020

Sacramento Maintenance Yard Maintenance Area 0004

Waterway	Bank	Unit Miles	Inspection Start/End	Inspector
Unit No. 01 Sacramento River	Right	3.47	04/09/2020 04/09/2020	Luz Dial

LM Start	0.32	Rating **	M	Issue No.	73 (cont)
LM End	0.32	Issue Type +	En	Location *	
Category	Supplemental		GPS Latitude/Longitude		
			Start	End	
Item	DWR UCIP Field Study		38.597915 °	38.597915 °	
			-121.542264 °	-121.542264 °	
DWR ID	25545				

Photo 3 of 3 : UCIP_SP_2020_54262_80019.jpg



Levee crown at crossing

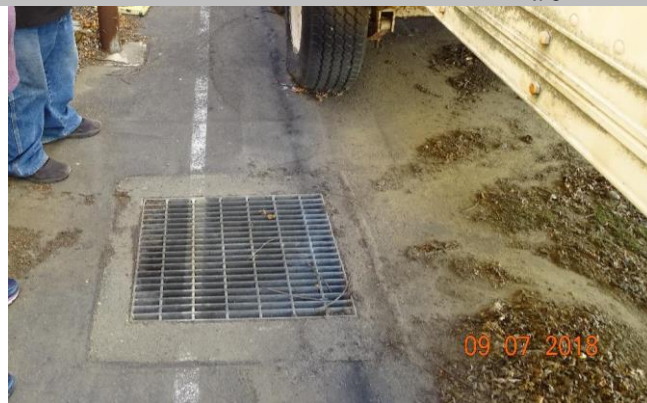
LM Start	0.38	Rating **	M	Issue No.	74
LM End	0.38	Issue Type +	En	Location *	
Category	Supplemental		GPS Latitude/Longitude		
			Start	End	
Item	DWR UCIP Field Study		38.598480 °	38.598480 °	
			-121.541376 °	-121.541376 °	
DWR ID	25547				

Comment Code

Inspector Comment

DS_ID:25547
 FS_ID:54255
 EP_NO: N/A
 Repair Type: Non-Urgent
 Crossing Status: Found
 UCIP Comments: 09/07/2018 Record remains Non-Urgent. No permit for this crossing was found. Estimated to be 6-inch HDPE drainage pipe inside of drainage box on landside closer to levee toe. (O.Yakimov - DWR UCIP)
 FIELD_STRUCT_DESC: 6-inch high-density polyethylene (HDPE) drainage pipe through the levee, unknown depth below levee crown. First drainage pit with grid is located in the middle of paved road, second is between 2 trailers toward levee toe inline with the first one.
 FS Date: 9/7/2018

Photo 1 of 3 : UCIP_SP_2020_54255_80007.jpg



Grided drainage pit between trailers on LS

*** Location**

LS : Land Side N/A : Not Applicable
 WS : Water Side
 CR : Crown

**** Rating**

A : Acceptable N : Not Inspected/Rated
 M : Minimally Acceptable C : Corrected
 U : Unacceptable A/W : Acceptable but Monitor & Maintain

+ Issue Type

Ma : Maintenance Deficiency
 Ob : Design & System Obsolescence
 En : Enforcement

**Flood Control Project Maintenance
Levee Inspections**

Levee Inspection Report By Mile - Spring 2020

Sacramento Maintenance Yard Maintenance Area 0004

Waterway	Bank	Unit Miles	Inspection Start/End	Inspector
Unit No. 01 Sacramento River	Right	3.47	04/09/2020 04/09/2020	Luz Dial

LM Start	0.38	Rating **	M	Issue No.	74 (cont)
LM End	0.38	Issue Type +	En	Location *	
Category	Supplemental		GPS Latitude/Longitude		
			Start	End	
Item	DWR UCIP Field Study		38.598480 °	38.598480 °	
			-121.541376 °	-121.541376 °	
DWR ID	25547				

Photo 2 of 3 : UCIP_SP_2020_54255_80005.jpg



View of levee crown at crossing

LM Start	0.38	Rating **	M	Issue No.	74 (cont)
LM End	0.38	Issue Type +	En	Location *	

Photo 3 of 3 : UCIP_SP_2020_54255_80006.jpg



View of landside looking from levee crown

* Location LS : Land Side N/A : Not Applicable WS : Water Side CR : Crown	** Rating A : Acceptable M : Minimally Acceptable U : Unacceptable	N : Not Inspected/Rated C : Corrected A/W : Acceptable but Monitor & Maintain	+ Issue Type Ma : Maintenance Deficiency Ob : Design & System Obsolescence En : Enforcement
--	--	---	---

**Flood Control Project Maintenance
Levee Inspections**

Levee Inspection Report By Mile - Spring 2020

Sacramento Maintenance Yard Maintenance Area 0004

Waterway	Bank	Unit Miles	Inspection Start/End	Inspector
Unit No. 01 Sacramento River	Right	3.47	04/09/2020 04/09/2020	Luz Dial

LM Start	0.41	Rating **	M	Issue No.	75	
LM End	0.41	Issue Type +	En	Location *		
Category	Supplemental			GPS Latitude/Longitude		
				Start	End	
Item	DWR UCIP Field Study			38.598742 °	38.598742 °	
				-121.541014 °	-121.541014 °	
DWR ID	25549					
Comment Code						
Inspector Comment						
DS_ID:25549						
FS_ID:55302						
EP_NO: N/A						
Repair Type: Non-Urgent						
Crossing Status: Not Found						
UCIP Comments: 10/10/2019 Record remains Non-Urgent. Crossing not found. According to FMO staff this pipe was disconnected from Sac Yard storm drainage system and grouted in place. Unable to locate a permit and confirm proper pipe abandonment. (O.Yakimov - DWR UCIP)09/07/2018 Crossing not found (O.Yakimov - DWR UCIP)						
FIELD_STRUCT_DESC: 6-inch corrugated metal drainage pipe through the levee, 15.5 feet below levee crown. (6-inch galvanized iron pipe authorized under Permit 2912, Department of Water Resources).						
[Additional Reference(s): DWR Levee Log, 2005, (HLM 0.41), USACE Sacramento O&M Manual 116, August 1955, (Station 53+12), Dwg No. 50-4-4179, page 9 of 19].						
FS Date: 10/10/2019 8:27:43 AM						

No Photos

LM Start	0.41	Rating **	U	Issue No.	15
LM End	0.41	Issue Type +	En	Location *	CR
Category	Earthen Levee			GPS Latitude/Longitude	
				Start	End
Item	Encroachments			38.598661 °	38.598661 °
				-121.540895 °	-121.540895 °
DWR ID	DWR_MA0004_01_f _ 2016_15				
Comment Code					
BU : Building					
Inspector Comment					
A chain link fence for the USACE facility crosses the levee.					

Photo 1 of 1 : SP_2020_MA0004_298_15_20200302_00008.jpg



View of fence crossing the crown on NE side of USACE facility. Fall 2016.

* Location LS : Land Side N/A : Not Applicable WS : Water Side CR : Crown	** Rating A : Acceptable M : Minimally Acceptable U : Unacceptable	N : Not Inspected/Rated C : Corrected A/W : Acceptable but Monitor & Maintain	+ Issue Type Ma : Maintenance Deficiency Ob : Design & System Obsolescence En : Enforcement
--	--	---	---

**Flood Control Project Maintenance
Levee Inspections**

Levee Inspection Report By Mile - Spring 2020

Sacramento Maintenance Yard Maintenance Area 0004

Waterway	Bank	Unit Miles	Inspection Start/End	Inspector
Unit No. 01 Sacramento River	Right	3.47	04/09/2020 04/09/2020	Luz Dial

LM Start	0.43	Rating **	M	Issue No.	76
LM End	0.43	Issue Type +	En	Location *	
Category	Supplemental			GPS Latitude/Longitude	
				Start	End
Item	DWR UCIP Field Study			38.598925 °	38.598925 °
				-121.540727 °	-121.540727 °
DWR ID	25544				

Comment Code

Inspector Comment

DS_ID:25544
FS_ID:55303
EP_NO: N/A
Repair Type: Non-Urgent
Crossing Status: Found
UCIP Comments: 10/10/2019 Record remains Non-Urgent. No permit has been identified authorizing pipe. According to FMO staff this pipe was disconnected from Sac Yard storm drainage system and grouted in place. Unable to locate a permit and confirm proper pipe abandonment. (O.Yakimov - DWR UCIP) 09/07/2018 Steel pipe at the bottom of drainage box is visible. Large reconstruction project is going on the property. Contact Brian Murphy with FMO after work is completed to request as-builts. (O.Yakimov - DWR UCIP)
FIELD_STRUCT_DESC: 8-inch steel drainage pipe through the levee, 12.1 feet below levee crown. [Additional Reference(s): USACE Sacramento O&M Manual 116, August 1955, (Station 53+72), Dwg No. 50-4-4179, page 9 of 19].
FS Date: 10/10/2019 8:51:06 AM

LM Start	0.43	Rating **	M	Issue No.	76 (cont)
LM End	0.43	Issue Type +	En	Location *	

Photo 1 of 3 : UCIP_SP_2020_55303_81540.jpg



8-inch steel pipe at the bottom of drainage box on LS goes towards levee

Photo 2 of 3 : UCIP_SP_2020_55303_81512.jpg



View of drainage box on levee crown

* Location LS : Land Side N/A : Not Applicable WS : Water Side CR : Crown		** Rating A : Acceptable M : Minimally Acceptable U : Unacceptable N : Not Inspected/Rated C : Corrected A/W : Acceptable but Monitor & Maintain		+ Issue Type Ma : Maintenance Deficiency Ob : Design & System Obsolescence En : Enforcement	
--	--	---	--	---	--

**Flood Control Project Maintenance
Levee Inspections**

Levee Inspection Report By Mile - Spring 2020

Sacramento Maintenance Yard Maintenance Area 0004

Waterway	Bank	Unit Miles	Inspection Start/End	Inspector
Unit No. 01 Sacramento River	Right	3.47	04/09/2020 04/09/2020	Luz Dial

LM Start	0.46	Rating **	M	Issue No.	77 (cont)
LM End	0.46	Issue Type +	En	Location *	
Category	Supplemental		GPS Latitude/Longitude		
			Start	End	
Item	DWR UCIP Field Study		38.599205 °	38.599205 °	
			-121.540303 °	-121.540303 °	
DWR ID	25552				

Photo 2 of 3 : UCIP_SP_2020_55304_83345.jpg



View of levee crown at the crossing

LM Start	0.46	Rating **	M	Issue No.	77 (cont)
LM End	0.46	Issue Type +	En	Location *	

Photo 3 of 3 : UCIP_SP_2020_55304_83346.jpg



View of WS levee slope

* Location LS : Land Side N/A : Not Applicable WS : Water Side CR : Crown	** Rating A : Acceptable M : Minimally Acceptable U : Unacceptable	N : Not Inspected/Rated C : Corrected A/W : Acceptable but Monitor & Maintain	+ Issue Type Ma : Maintenance Deficiency Ob : Design & System Obsolescence En : Enforcement
--	--	---	---

**Flood Control Project Maintenance
Levee Inspections**

Levee Inspection Report By Mile - Spring 2020

Sacramento Maintenance Yard Maintenance Area 0004

Waterway	Bank	Unit Miles	Inspection Start/End	Inspector
Unit No. 01 Sacramento River	Right	3.47	04/09/2020 04/09/2020	Luz Dial

LM Start	0.48	Rating **	M	Issue No.	78	
LM End	0.48	Issue Type +	En	Location *		
Category	Supplemental			GPS Latitude/Longitude		
				Start	End	
Item	DWR UCIP Field Study			38.599396 °	38.599396 °	
				-121.540026 °	-121.540026 °	
DWR ID	25550					
Comment Code						
Inspector Comment						
DS_ID:25550 FS_ID:55305 EP_NO: N/A Repair Type: Non-Urgent Crossing Status: Not Found UCIP Comments: 10/10/2019 Record remains Non-Urgent. Crossing not found. According to FMO staff this pipe was disconnected from Sac Yard storm drainage system and grouted in place. Unable to locate a permit and confirm proper pipe abandonment. No permit has been identified authorizing pipe. (O.Yakimov - DWR UCIP) 09/07/2018 Crossing not found (O.Yakimov - DWR UCIP) FIELD_STRUCT_DESC: 6-inch vitrified clay drainage pipe through the levee, 16.1 feet below levee crown. [Additional Reference(s): USACE Sacramento O&M Manual 116, August 1955), Dwg No. 50-4-4179, page 9 of 19]. FS Date: 10/10/2019 9:04:32 AM						

Photo 1 of 3 : UCIP_SP_2020_55305_80008.jpg



Top of levee at crossing

LM Start	0.48	Rating **	M	Issue No.	78 (cont)
LM End	0.48	Issue Type +	En	Location *	

Photo 2 of 3 : UCIP_SP_2020_55305_83347.jpg



View of crown at crossing

* Location LS : Land Side N/A : Not Applicable WS : Water Side CR : Crown	** Rating A : Acceptable M : Minimally Acceptable U : Unacceptable	N : Not Inspected/Rated C : Corrected A/W : Acceptable but Monitor & Maintain	+ Issue Type Ma : Maintenance Deficiency Ob : Design & System Obsolescence En : Enforcement
--	--	---	---

**Flood Control Project Maintenance
Levee Inspections**

Levee Inspection Report By Mile - Spring 2020

Sacramento Maintenance Yard Maintenance Area 0004

Waterway	Bank	Unit Miles	Inspection Start/End	Inspector
Unit No. 01 Sacramento River	Right	3.47	04/09/2020 04/09/2020	Luz Dial

LM Start	0.48	Rating **	M	Issue No.	78 (cont)
LM End	0.48	Issue Type +	En	Location *	
Category	Supplemental		GPS Latitude/Longitude		
			Start	End	
Item	DWR UCIP Field Study		38.599396 °	38.599396 °	
			-121.540026 °	-121.540026 °	
DWR ID	25550				

Photo 3 of 3 : UCIP_SP_2020_55305_83348.jpg



View of crown at crossing

LM Start	0.58	Rating **	M	Issue No.	79
LM End	0.58	Issue Type +	En	Location *	
Category	Supplemental		GPS Latitude/Longitude		
			Start	End	
Item	DWR UCIP Field Study		38.599999 °	38.599999 °	
			-121.538223 °	-121.538223 °	
DWR ID	25582				

No Photos

Comment Code

Inspector Comment

DS_ID:25582
 FS_ID:56702
 EP_NO: N/A
 Repair Type: Non-Urgent
 Crossing Status: Not Found
 UCIP Comments:
 FIELD_STRUCT_DESC: 3/4 gas line of unknown material crossing
 landside levee slope enters a Sac Yard building on levee crown.
 Discovered during revision of Sacramento Maintenance Yard Site
 Rehabilitation - Phase I Pavement and Utilities as-built drawings (Sheet
 009 Existing Utility System, Drawing No. C1-05).
 FS Date: 10/10/2019 1:47:51 PM

*** Location**

LS : Land Side N/A : Not Applicable
 WS : Water Side
 CR : Crown

**** Rating**

A : Acceptable N : Not Inspected/Rated
 M : Minimally Acceptable C : Corrected
 U : Unacceptable A/W : Acceptable but Monitor & Maintain

+ Issue Type

Ma : Maintenance Deficiency
 Ob : Design & System Obsolescence
 En : Enforcement

**Flood Control Project Maintenance
Levee Inspections**

Levee Inspection Report By Mile - Spring 2020

Sacramento Maintenance Yard Maintenance Area 0004

Waterway	Bank	Unit Miles	Inspection Start/End	Inspector
Unit No. 01 Sacramento River	Right	3.47	04/09/2020 04/09/2020	Luz Dial

LM Start	0.76	Rating **	C	Issue No.	30
LM End	0.76	Issue Type +	Ma	Location *	WS
Category	Earthen Levee			GPS Latitude/Longitude	
				Start	End
Item	Encroachments			38.601353 °	38.601353 °
				-121.536140 °	-121.536140 °
DWR ID	DWR_MA0004_01_s _ 2019_30				
Comment Code					
TR : Tree or limb					
Inspector Comment					

No Photos

LM Start	0.77	Rating **	M	Issue No.	60
LM End	0.98	Issue Type +	Ma	Location *	LS
Category	Earthen Levee			GPS Latitude/Longitude	
				Start	End
Item	Vegetation			38.601468 °	38.602208 °
				-121.535865 °	-121.532208 °
DWR ID	DWR_MA0004_01_s _ 2020_60				
Comment Code					
V1 : Control annual grass and weeds on the levee slopes and easements.					
Inspector Comment					

No Photos

LM Start	0.77	Rating **	M	Issue No.	61
LM End	0.82	Issue Type +	Ma	Location *	WS
Category	Earthen Levee			GPS Latitude/Longitude	
				Start	End
Item	Vegetation			38.601458 °	38.601762 °
				-121.535828 °	-121.535032 °
DWR ID	DWR_MA0004_01_s _ 2020_61				
Comment Code					
V1 : Control annual grass and weeds on the levee slopes and easements.					
Inspector Comment					

No Photos

* Location LS : Land Side N/A : Not Applicable WS : Water Side CR : Crown	** Rating A : Acceptable M : Minimally Acceptable U : Unacceptable	N : Not Inspected/Rated C : Corrected A/W : Acceptable but Monitor & Maintain	+ Issue Type Ma : Maintenance Deficiency Ob : Design & System Obsolescence En : Enforcement
--	--	---	---

**Flood Control Project Maintenance
Levee Inspections**

Levee Inspection Report By Mile - Spring 2020

Sacramento Maintenance Yard Maintenance Area 0004

Waterway	Bank	Unit Miles	Inspection Start/End	Inspector
Unit No. 01 Sacramento River	Right	3.47	04/09/2020 04/09/2020	Luz Dial

LM Start	1.08	Rating **	M	Issue No.	62
LM End	1.27	Issue Type +	Ma	Location *	WS
Category	Earthen Levee			GPS Latitude/Longitude	
				Start	End
Item	Vegetation			38.602533 °	38.602773 °
				-121.530405 °	-121.526908 °
DWR ID	DWR_MA0004_01_s_2020_62				
Comment Code					
V1 : Control annual grass and weeds on the levee slopes and easements.					
Inspector Comment					

No Photos

LM Start	1.12	Rating **	M	Issue No.	37
LM End	1.32	Issue Type +	Ma	Location *	LS
Category	Earthen Levee			GPS Latitude/Longitude	
				Start	End
Item	Vegetation			38.602643 °	38.602783 °
				-121.529557 °	-121.525873 °
DWR ID	DWR_MA0004_01_f_2019_37				
Comment Code					
V1 : Control annual grass and weeds on the levee slopes and easements.					
Inspector Comment					

No Photos

*** Location**
LS : Land Side N/A : Not Applicable
WS : Water Side
CR : Crown

**** Rating**
A : Acceptable N : Not Inspected/Rated
M : Minimally Acceptable C : Corrected
U : Unacceptable A/W : Acceptable but Monitor & Maintain

+ Issue Type
Ma : Maintenance Deficiency
Ob : Design & System Obsolescence
En : Enforcement

**Flood Control Project Maintenance
Levee Inspections**

Levee Inspection Report By Mile - Spring 2020

Sacramento Maintenance Yard Maintenance Area 0004

Waterway	Bank	Unit Miles	Inspection Start/End	Inspector
Unit No. 01 Sacramento River	Right	3.47	04/09/2020 04/09/2020	Luz Dial

LM Start	1.72	Rating **	M	Issue No.	80
LM End	1.72	Issue Type +	En	Location *	
Category	Supplemental			GPS Latitude/Longitude	
				Start	End
Item	DWR UCIP Field Study			38.602040 °	38.602040 °
				-121.518610 °	-121.518610 °
DWR ID	261				
Comment Code					
Inspector Comment					
DS_ID:261 FS_ID:55295 EP_NO: 5528 Repair Type: Non-Urgent Crossing Status: Not Found UCIP Comments: 10/10/2019 Record remains Non-Urgent. Crossing not found. (O.Yakimov - DWR UCIP) FIELD_STRUCT_DESC: 2-inch electrical conduit of an unknown material through the levee, 1.5 feet below the crown. Electrical conduit supplies power to an existing pumping plant located on the waterside (WS) slope of the levee. (15-inch concrete pipe siphon authorized under Permit No. 5588, 1966 - Tomas Echandi). FS Date: 10/10/2019 2:40:56 PM					

No Photos

* Location LS : Land Side N/A : Not Applicable WS : Water Side CR : Crown	** Rating A : Acceptable M : Minimally Acceptable U : Unacceptable N : Not Inspected/Rated C : Corrected A/W : Acceptable but Monitor & Maintain	+ Issue Type Ma : Maintenance Deficiency Ob : Design & System Obsolescence En : Enforcement
--	---	---

**Flood Control Project Maintenance
Levee Inspections**

Levee Inspection Report By Mile - Spring 2020

Sacramento Maintenance Yard Maintenance Area 0004

Waterway	Bank	Unit Miles	Inspection Start/End	Inspector
Unit No. 01 Sacramento River	Right	3.47	04/09/2020 04/09/2020	Luz Dial

LM Start	1.72	Rating **	M	Issue No.	81
LM End	1.72	Issue Type +	En	Location *	
Category	Supplemental			GPS Latitude/Longitude	
				Start	End
Item	DWR UCIP Field Study			38.602040 °	38.602040 °
				-121.518610 °	-121.518610 °
DWR ID	262				
Comment Code					
Inspector Comment					
DS_ID:262 FS_ID:55296 EP_NO: 5824 Repair Type: Non-Urgent Crossing Status: Not Found UCIP Comments: 10/10/2019 Record updated to Non-Urgent. Crossing not found. Recommend LMA prepare a contingency plan for increased inspections during high-water to identify any pipe integrity or levee integrity issues that might arise with not found pipe. Need to contact owner to determine status of pipe. (O.Yakimov - DWR UCIP) FIELD_STRUCT_DESC: 8-inch welded steel, dipped and wrapped, discharge pipe, 8.2 feet below the crown. This pipe is a replacement for an existing 8-inch pipe. The new pipe was installed between the existing pumping plant located on the waterside (WS) berm of the levee and the existing reinforced concrete discharge box located at the landside (LS) toe, a distance of 88.5 feet. (Replaced an existing 8-inch welded steel pipe discharge line on an existing pumping plant authorized under Permit No. 5824, 1967 - G. W. Williams Company). [Additional Reference(s): USACE Sacramento O&M Manual 116, August 1955, (RM 60.85)]. FS Date: 10/10/2019 2:43:26 PM					

No Photos

LM Start	2.00	Rating **	M	Issue No.	38
LM End	2.07	Issue Type +	Ma	Location *	LS
Category	Earthen Levee			GPS Latitude/Longitude	
				Start	End
Item	Vegetation			38.600088 °	38.599312 °
				-121.514170 °	-121.513562 °
DWR ID	DWR_MA0004_01_f_2019_38				
Comment Code					
V1 : Control annual grass and weeds on the levee slopes and easements.					
Inspector Comment					

No Photos

* Location LS : Land Side N/A : Not Applicable WS : Water Side CR : Crown	** Rating A : Acceptable M : Minimally Acceptable U : Unacceptable	N : Not Inspected/Rated C : Corrected A/W : Acceptable but Monitor & Maintain	+ Issue Type Ma : Maintenance Deficiency Ob : Design & System Obsolescence En : Enforcement
--	--	---	---

**Flood Control Project Maintenance
Levee Inspections**

Levee Inspection Report By Mile - Spring 2020

Sacramento Maintenance Yard Maintenance Area 0004

Waterway	Bank	Unit Miles	Inspection Start/End	Inspector
Unit No. 01 Sacramento River	Right	3.47	04/09/2020 04/09/2020	Luz Dial

LM Start	2.01	Rating **	M	Issue No.	82
LM End	2.01	Issue Type +	En	Location *	
Category	Supplemental			GPS Latitude/Longitude	
				Start	End
Item	DWR UCIP Field Study			38.599960 °	38.599960 °
				-121.514070 °	-121.514070 °
DWR ID	274				
Comment Code					
Inspector Comment					
DS_ID:274 FS_ID:55297 EP_NO: N/A Repair Type: Non-Urgent Crossing Status: Not Found UCIP Comments: 10/10/2019 Record remains Non-Urgent. Crossing not found. Recommend LMA prepare a contingency plan for increased inspections during high-water to identify any pipe integrity or levee integrity issues that might arise with not found pipe. Geophysical results did not confirm presence of pipe through levee. Record will remain in UCIP's inspection records until future Levee Improvement Project can confirm no crossing was found through the levee. No permit has been identified authorizing pipe. (O.Yakimov - DWR UCIP) FIELD_STRUCT_DESC: 12-inch steel irrigation pipe through the levee, at an unknown depth. [Additional Reference(s): USACE Sacramento O&M Manual 116, August 1955, (RM 60.55)]. FS Date: 10/10/2019 3:15:23 PM					

No Photos

LM Start	2.02	Rating **	M	Issue No.	14
LM End	2.21	Issue Type +	En	Location *	LS
Category	Earthen Levee			GPS Latitude/Longitude	
				Start	End
Item	Encroachments			38.599813 °	38.597533 °
				-121.513978 °	-121.513134 °
DWR ID	DWR_MA0004_01_s_2017_14				
Comment Code					
FE : Fence					
Inspector Comment					
A fence runs along the toe of the landside levee.					

Photo 1 of 1 : SP_2020_MA0004_298_14_20200302_00007.jpg



View of the fence running along the toe of the landward side of the levee looking downstream. Fall 2015.

* Location LS : Land Side N/A : Not Applicable WS : Water Side CR : Crown	** Rating A : Acceptable M : Minimally Acceptable U : Unacceptable	N : Not Inspected/Rated C : Corrected A/W : Acceptable but Monitor & Maintain	+ Issue Type Ma : Maintenance Deficiency Ob : Design & System Obsolescence En : Enforcement
--	--	---	---

**Flood Control Project Maintenance
Levee Inspections**

Levee Inspection Report By Mile - Spring 2020

Sacramento Maintenance Yard Maintenance Area 0004

Waterway	Bank	Unit Miles	Inspection Start/End	Inspector
Unit No. 01 Sacramento River	Right	3.47	04/09/2020 04/09/2020	Luz Dial

LM Start	2.08	Rating **	M	Issue No.	63
LM End	2.10	Issue Type +	Ma	Location *	WS
Category	Earthen Levee			GPS Latitude/Longitude	
				Start	End
Item	Vegetation			38.599097 °	38.598915 °
				-121.513378 °	-121.513245 °
DWR ID	DWR_MA0004_01_s_2020_63				
Comment Code					
V1 : Control annual grass and weeds on the levee slopes and easements.					
Inspector Comment					

No Photos

LM Start	2.13	Rating **	M	Issue No.	18
LM End	2.13	Issue Type +	Ma	Location *	WS
Category	Earthen Levee			GPS Latitude/Longitude	
				Start	End
Item	Animal Control			38.598478 °	38.598478 °
				-121.512932 °	-121.512932 °
DWR ID	DWR_MA0004_01_f _ 2015_18				
Comment Code					
A3 : No rodents visible, but rodent burrows visible; need to backfill and compact or grout burrows.					
Inspector Comment					
Backfill animal holes.					

Photo 1 of 1 : SP_2020_MA0004_298_18_20200302_00011.jpg



View of animal holes on the WS slope. Fall 2016.

LM Start	2.14	Rating **	C	Issue No.	39
LM End	2.14	Issue Type +	Ma	Location *	WS
Category	Earthen Levee			GPS Latitude/Longitude	
				Start	End
Item	Encroachments			38.598350 °	38.598350 °
				-121.512822 °	-121.512822 °
DWR ID	DWR_MA0004_01_f_2019_39				
Comment Code					
TR : Tree or limb					
Inspector Comment					

No Photos

* Location LS : Land Side N/A : Not Applicable WS : Water Side CR : Crown	** Rating A : Acceptable M : Minimally Acceptable U : Unacceptable	N : Not Inspected/Rated C : Corrected A/W : Acceptable but Monitor & Maintain	+ Issue Type Ma : Maintenance Deficiency Ob : Design & System Obsolescence En : Enforcement
--	--	---	---

**Flood Control Project Maintenance
Levee Inspections**

Levee Inspection Report By Mile - Spring 2020

Sacramento Maintenance Yard Maintenance Area 0004

Waterway	Bank	Unit Miles	Inspection Start/End	Inspector
Unit No. 01 Sacramento River	Right	3.47	04/09/2020 04/09/2020	Luz Dial

LM Start	2.18	Rating **	C	Issue No.	13
LM End	2.18	Issue Type +	Ma	Location *	LS
Category	Earthen Levee			GPS Latitude/Longitude	
				Start	End
Item	Erosion / Bank Caving			38.597932 °	38.597932 °
				-121.512887 °	-121.512887 °
DWR ID	DWR_MA0004_01_s_2015_13				
Comment Code					
E2 : Schedule repair of erosion site prior to the next inspection.					
Inspector Comment					

No Photos

LM Start	2.23	Rating **	M	Issue No.	41
LM End	2.44	Issue Type +	Ma	Location *	LS
Category	Earthen Levee			GPS Latitude/Longitude	
				Start	End
Item	Vegetation			38.597210 °	38.594375 °
				-121.513257 °	-121.512248 °
DWR ID	DWR_MA0004_01_f _ 2019_41				
Comment Code					
V2 : Remove the wild growth other than native grasses from the levee slopes.					
Inspector Comment					

Photo 1 of 1 : SP_2020_MA0004_298_41_20200409_00071.jpg



View of wild growth on the landside slope looking downstream. Spring 2020

LM Start	2.24	Rating **	C	Issue No.	40
LM End	2.24	Issue Type +	Ma	Location *	LS
Category	Earthen Levee			GPS Latitude/Longitude	
				Start	End
Item	Trim / Thin Trees			38.597000 °	38.597000 °
				-121.513277 °	-121.513277 °
DWR ID	DWR_MA0004_01_f_2019_40				
Comment Code					
T1 : Trim trees to at least five feet above ground level.					
Inspector Comment					

No Photos

* Location LS : Land Side N/A : Not Applicable WS : Water Side CR : Crown	** Rating A : Acceptable M : Minimally Acceptable U : Unacceptable	N : Not Inspected/Rated C : Corrected A/W : Acceptable but Monitor & Maintain	+ Issue Type Ma : Maintenance Deficiency Ob : Design & System Obsolescence En : Enforcement
--	--	---	---

**Flood Control Project Maintenance
Levee Inspections**

Levee Inspection Report By Mile - Spring 2020

Sacramento Maintenance Yard Maintenance Area 0004

Waterway	Bank	Unit Miles	Inspection Start/End	Inspector
Unit No. 01 Sacramento River	Right	3.47	04/09/2020 04/09/2020	Luz Dial

LM Start	2.25	Rating **	M	Issue No.	64
LM End	2.57	Issue Type +	Ma	Location *	WS
Category	Earthen Levee			GPS Latitude/Longitude	
				Start	End
Item	Vegetation			38.596863 °	38.592492 °
				-121.513245 °	-121.511857 °
DWR ID	DWR_MA0004_01_s_2020_64				
Comment Code					
V1 : Control annual grass and weeds on the levee slopes and easements.					
Inspector Comment					

No Photos

LM Start	2.41	Rating **	M	Issue No.	83	
LM End	2.41	Issue Type +	En	Location *		
Category	Supplemental			GPS Latitude/Longitude		
				Start		End
Item	DWR UCIP Field Study			38.594680 °		38.594680 °
				-121.512310 °		-121.512310 °
DWR ID	264					
Comment Code						
Inspector Comment						
DS_ID:264 FS_ID:55298 EP_NO: 4561 Repair Type: Non-Urgent Crossing Status: Not Found UCIP Comments: 10/10/2019 Record updated to Non-Urgent. No inspection records were available to determine status of line through the levee. Crossing not found. Need to contact owner to determine status of crossing. (O.Yakimov - DWR UCIP) FIELD_STRUCT_DESC: 2-inch welded, wrapped steel high-pressure natural gas main through the levee, 2.5 feet below the crown. (2-inch welded, wrapped steel high-pressure natural gas main authorized under Permit No. 4561, 1964 - Pacific Gas and Electric Company [PG&E]). FS Date: 10/10/2019 3:28:48 PM						

No Photos

* Location LS : Land Side N/A : Not Applicable WS : Water Side CR : Crown	** Rating A : Acceptable M : Minimally Acceptable U : Unacceptable	N : Not Inspected/Rated C : Corrected A/W : Acceptable but Monitor & Maintain	+ Issue Type Ma : Maintenance Deficiency Ob : Design & System Obsolescence En : Enforcement
--	--	---	---

**Flood Control Project Maintenance
Levee Inspections**

Levee Inspection Report By Mile - Spring 2020

Sacramento Maintenance Yard Maintenance Area 0004

Waterway	Bank	Unit Miles	Inspection Start/End	Inspector
Unit No. 01 Sacramento River	Right	3.47	04/09/2020 04/09/2020	Luz Dial

LM Start	2.59	Rating **	M	Issue No.	84
LM End	2.59	Issue Type +	En	Location *	
Category	Supplemental			GPS Latitude/Longitude	
				Start	End
Item	DWR UCIP Field Study			38.592220 °	38.592220 °
				-121.511750 °	-121.511750 °
DWR ID	254				
Comment Code					
Inspector Comment					
DS_ID:254 FS_ID:55299 EP_NO: N/A Repair Type: Non-Urgent Crossing Status: Not Found UCIP Comments: 10/10/2019 Record remains Non-Urgent. Crossing not found. Unable to locate a permit and confirm proper pipe abandonment. Unauthorized encroachment recorded in Levee Log prior to 2011. (O.Yakimov - DWR UCIP) FIELD_STRUCT_DESC: 48-inch corrugated metal drainage pipe through the levee, 24.2 feet below the crown. Pipe has been grouted. [Additional Reference(s): DWR Levee Log, 2005 (HLM 2.56)]. FS Date: 10/10/2019 3:31:13 PM					

No Photos

LM Start	2.63	Rating **	A/W	Issue No.	20
LM End	2.63	Issue Type +	Ma	Location *	LS
Category	Earthen Levee			GPS Latitude/Longitude	
				Start	End
Item	Animal Control			38.591532 °	38.591532 °
				-121.511646 °	-121.511646 °
DWR ID	DWR_MA0004_01_f_2016_20				
Comment Code					
A3 : No rodents visible, but rodent burrows visible; need to backfill and compact or grout burrows.					
Inspector Comment					
LMA backfilled animal hole and recommend monitoring.					

Photo 1 of 1 : SP_2020_MA0004_298_20_20200302_00012.jpg



Large diameter animal burrows on LS slope. Fall 2016.

* Location LS : Land Side N/A : Not Applicable WS : Water Side CR : Crown	** Rating A : Acceptable M : Minimally Acceptable U : Unacceptable	N : Not Inspected/Rated C : Corrected A/W : Acceptable but Monitor & Maintain	+ Issue Type Ma : Maintenance Deficiency Ob : Design & System Obsolescence En : Enforcement
--	--	---	---

**Flood Control Project Maintenance
Levee Inspections**

Levee Inspection Report By Mile - Spring 2020

Sacramento Maintenance Yard Maintenance Area 0004

Waterway	Bank	Unit Miles	Inspection Start/End	Inspector
Unit No. 01 Sacramento River	Right	3.47	04/09/2020 04/09/2020	Luz Dial

LM Start	2.65	Rating **	A/W	Issue No.	22
LM End	2.65	Issue Type +	Ma	Location *	LS
Category	Earthen Levee			GPS Latitude/Longitude	
				Start	End
Item	Slope Stability			38.591380 °	38.591380 °
				-121.511345 °	-121.511345 °
DWR ID	DWR_MA0004_01_f _ 2015_22				
Comment Code					
S2 : Repair the levee slope damaged by foot traffic and prevent access where possible.					
Inspector Comment					

Photo 1 of 1 : SP_2020_MA0004_298_22_20200302_00014.jpg



View looking upstream of the depression on the landward side of the levee due to foot traffic. Fall 2015.

LM Start	2.67	Rating **	C	Issue No.	21
LM End	2.68	Issue Type +	En	Location *	LS
Category	Earthen Levee			GPS Latitude/Longitude	
				Start	End
Item	Vegetation			38.591228 °	38.591080 °
				-121.511130 °	-121.510994 °
DWR ID	DWR_MA0004_01_f_2016_21				
Comment Code					
V6 : Landscaping					
Inspector Comment					

No Photos

*** Location**
LS : Land Side N/A : Not Applicable
WS : Water Side
CR : Crown

**** Rating**
A : Acceptable N : Not Inspected/Rated
M : Minimally Acceptable C : Corrected
U : Unacceptable A/W : Acceptable but Monitor & Maintain

+ Issue Type
Ma : Maintenance Deficiency
Ob : Design & System Obsolescence
En : Enforcement

**Flood Control Project Maintenance
Levee Inspections**

Levee Inspection Report By Mile - Spring 2020

Sacramento Maintenance Yard Maintenance Area 0004

Waterway	Bank	Unit Miles	Inspection Start/End	Inspector
Unit No. 01 Sacramento River	Right	3.47	04/09/2020 04/09/2020	Luz Dial

LM Start	2.67	Rating **	M	Issue No.	65
LM End	2.67	Issue Type +	En	Location *	LS
Category	Earthen Levee			GPS Latitude/Longitude	
				Start	End
Item	Encroachments			38.591143 °	38.591143 °
				-121.511047 °	-121.511047 °
DWR ID	DWR_MA0004_01_s _ 2020_65				
Comment Code					
TR : Tree or limb					
Inspector Comment					
Remove a fallen tree from the landside slope.					

Photo 1 of 1 : SP_2020_MA0004_298_65_20200409_00072.jpg



View of a fallen tree and dying landscape vegetation on the landside slope. Spring 2020

LM Start	2.69	Rating **	M	Issue No.	85	
LM End	2.69	Issue Type +	En	Location *		
Category	Supplemental			GPS Latitude/Longitude		
				Start		End
Item	DWR UCIP Field Study			38.590910 °		38.590910 °
				-121.510830 °		-121.510830 °
DWR ID	19405					
Comment Code						
Inspector Comment						
DS_ID:19405						
FS_ID:55300						
EP_NO: N/A						
Repair Type: Non-Urgent						
Crossing Status: Found						
UCIP Comments: 10/10/2019 Record remains Non-Urgent. No permit for this crossing was found. A public restroom on WS and a manhole located on road shoulder may be associated with this crossing.						
(O.Yakimov - DWR UCIP)						
09/12/2012 Found during the field survey, not listed in the desk study.						
(P. Amatya - DWR UCIP)						
FIELD_STRUCT_DESC: 6-inch steel sewer line from the public facility of the boat launching area. No other details available.						
FS Date: 10/10/2019 3:32:36 PM						

Photo 1 of 3 : UCIP_SP_2020_55300_81531.jpg



Manhole on the road shoulder on LS

* Location LS : Land Side N/A : Not Applicable WS : Water Side CR : Crown	** Rating A : Acceptable M : Minimally Acceptable U : Unacceptable N : Not Inspected/Rated C : Corrected A/W : Acceptable but Monitor & Maintain	+ Issue Type Ma : Maintenance Deficiency Ob : Design & System Obsolescence En : Enforcement
--	---	---

**Flood Control Project Maintenance
Levee Inspections**

Levee Inspection Report By Mile - Spring 2020

Sacramento Maintenance Yard Maintenance Area 0004

Waterway	Bank	Unit Miles	Inspection Start/End	Inspector
Unit No. 01 Sacramento River	Right	3.47	04/09/2020 04/09/2020	Luz Dial

LM Start	2.69	Rating **	M	Issue No.	85 (cont)
LM End	2.69	Issue Type +	En	Location *	
Category	Supplemental		GPS Latitude/Longitude		
			Start	End	
Item	DWR UCIP Field Study		38.590910 °	38.590910 °	
			-121.510830 °	-121.510830 °	
DWR ID	19405				

Photo 2 of 3 : UCIP_SP_2020_55300_81532.jpg



Public restroom on WS

LM Start	2.69	Rating **	M	Issue No.	85 (cont)
LM End	2.69	Issue Type +	En	Location *	

Photo 3 of 3 : UCIP_SP_2020_55300_83349.jpg



Older photo of a manhole on the road shoulder on LS

LM Start	2.70	Rating **	A/W	Issue No.	17
LM End	2.70	Issue Type +	Ma	Location *	LS
Category	Earthen Levee			GPS Latitude/Longitude	
				Start	End
Item	Slope Stability			38.590802 °	38.590802 °
				-121.510736 °	-121.510736 °
DWR ID	DWR_MA0004_01_f_2018_17				
Comment Code					
S3 : Repair the levee slope damaged by vehicle traffic and prevent access where possible.					
Inspector Comment					
Monitor slope damage from vehicular traffic bypassing gate. Consider placement of a barrier.					

Photo 1 of 1 : SP_2020_MA0004_298_17_20200302_00010.jpg



View of slope damage from vehicular traffic bypassing gate. Fall 2018

* Location LS : Land Side N/A : Not Applicable WS : Water Side CR : Crown		** Rating A : Acceptable N : Not Inspected/Rated M : Minimally Acceptable C : Corrected U : Unacceptable A/W : Acceptable but Monitor & Maintain		+ Issue Type Ma : Maintenance Deficiency Ob : Design & System Obsolescence En : Enforcement	
--	--	---	--	---	--

**Flood Control Project Maintenance
Levee Inspections**

Levee Inspection Report By Mile - Spring 2020

Sacramento Maintenance Yard Maintenance Area 0004

Waterway	Bank	Unit Miles	Inspection Start/End	Inspector
Unit No. 01 Sacramento River	Right	3.47	04/09/2020 04/09/2020	Luz Dial

LM Start	2.70	Rating **	M	Issue No.	66
LM End	2.75	Issue Type +	Ma	Location *	LS
Category	Earthen Levee			GPS Latitude/Longitude	
				Start	End
Item	Vegetation			38.590782 °	38.590272 °
				-121.510757 °	-121.510053 °
DWR ID	DWR_MA0004_01_s _ 2020_66				
Comment Code					
V1 : Control annual grass and weeds on the levee slopes and easements.					
Inspector Comment					

No Photos

LM Start	2.71	Rating **	C	Issue No.	44
LM End	2.71	Issue Type +	Ma	Location *	CR
Category	Earthen Levee			GPS Latitude/Longitude	
				Start	End
Item	Repair Gates			38.590780 °	38.590780 °
				-121.510645 °	-121.510645 °
DWR ID	DWR_MA0004_01_s _ 2019_44				
Comment Code					
Inspector Comment					

No Photos

LM Start	2.71	Rating **	M	Issue No.	67
LM End	2.71	Issue Type +	Ma	Location *	WS
Category	Earthen Levee			GPS Latitude/Longitude	
				Start	End
Item	Trim / Thin Trees			38.590685 °	38.590685 °
				-121.510590 °	-121.510590 °
DWR ID	DWR_MA0004_01_s _ 2020_67				
Comment Code					
T1 : Trim trees to at least five feet above ground level.					
Inspector Comment					

No Photos

* Location LS : Land Side N/A : Not Applicable WS : Water Side CR : Crown	** Rating A : Acceptable M : Minimally Acceptable U : Unacceptable	N : Not Inspected/Rated C : Corrected A/W : Acceptable but Monitor & Maintain	+ Issue Type Ma : Maintenance Deficiency Ob : Design & System Obsolescence En : Enforcement
--	--	---	---

**Flood Control Project Maintenance
Levee Inspections**

Levee Inspection Report By Mile - Spring 2020

Sacramento Maintenance Yard Maintenance Area 0004

Waterway	Bank	Unit Miles	Inspection Start/End	Inspector
Unit No. 01 Sacramento River	Right	3.47	04/09/2020 04/09/2020	Luz Dial

LM Start	2.78	Rating **	M	Issue No.	86
LM End	2.78	Issue Type +	En	Location *	
Category	Supplemental			GPS Latitude/Longitude	
				Start	End
Item	DWR UCIP Field Study			38.590100 °	38.590100 °
				-121.509693 °	-121.509693 °
DWR ID	265				
Comment Code					
Inspector Comment					
DS_ID:265 FS_ID:55310 EP_NO: 14527 Repair Type: Non-Urgent Crossing Status: Indicator Found UCIP Comments: 10/10/2019 Record updated from No Action Needed to Non-Urgent. No maintenance records available for this crossing. (O.Yakimov - DWR UCIP) FIELD_STRUCT_DESC: 12-inch coated steel petroleum pipeline, 3 feet below the crown. Gas/petroleum line markers found on both sides of the levee. (12.75-inch welded steel pipeline authorized under Permit No. 14527, 1987 - Southern Pacific Pipe Lines, Inc.). FS Date: 10/10/2019 10:44:29 AM					

LM Start	2.78	Rating **	M	Issue No.	86 (cont)
LM End	2.78	Issue Type +	En	Location *	

Photo 1 of 3 : UCIP_SP_2020_55310_81562.jpg



View of levee crown at crossing

Photo 2 of 3 : UCIP_SP_2020_55310_81564.jpg



Petroleum line marker on WS

* Location LS : Land Side N/A : Not Applicable WS : Water Side CR : Crown	** Rating A : Acceptable M : Minimally Acceptable U : Unacceptable	N : Not Inspected/Rated C : Corrected A/W : Acceptable but Monitor & Maintain	+ Issue Type Ma : Maintenance Deficiency Ob : Design & System Obsolescence En : Enforcement
--	--	---	---

**Flood Control Project Maintenance
Levee Inspections**

Levee Inspection Report By Mile - Spring 2020

Sacramento Maintenance Yard Maintenance Area 0004

Waterway	Bank	Unit Miles	Inspection Start/End	Inspector
Unit No. 01 Sacramento River	Right	3.47	04/09/2020 04/09/2020	Luz Dial

LM Start	2.78	Rating **	M	Issue No.	86 (cont)
LM End	2.78	Issue Type +	En	Location *	
Category	Supplemental		GPS Latitude/Longitude		
			Start	End	
Item	DWR UCIP Field Study		38.590100 °	38.590100 °	
			-121.509693 °	-121.509693 °	
DWR ID	265				

Photo 3 of 3 : UCIP_SP_2020_55310_81565.jpg



Petroleum line marker and ramp on LS

LM Start	2.78	Rating **	M	Issue No.	87
LM End	2.78	Issue Type +	En	Location *	
Category	Supplemental		GPS Latitude/Longitude		
			Start	End	
Item	DWR UCIP Field Study		38.590111 °	38.590111 °	
			-121.509695 °	-121.509695 °	
DWR ID	19406				

Comment Code

Inspector Comment

DS_ID:19406
 FS_ID:55311
 EP_NO: N/A
 Repair Type: Non-Urgent
 Crossing Status: Found
 UCIP Comments: 10/10/2019 Record remains Non-Urgent. No permit for this crossing was found. (O.Yakimov - DWR UCIP) 09/12/2012 Found during field survey. Not listed in the desk study. (P. Amatya - DWR UCIP)
 FIELD_STRUCT_DESC: 1 of 2: 3-inch wrapped galvanized iron (GI) water pipe through the levee, at an unknown depth. Pipe daylights in a metal cage box. Valve box for the pipe is also found.
 FS Date: 10/10/2019 11:45:35 AM

Photo 1 of 3 : UCIP_SP_2020_55311_81566.jpg



Waterside view: a control valve box with a metal lid

* Location LS : Land Side N/A : Not Applicable WS : Water Side CR : Crown	** Rating A : Acceptable M : Minimally Acceptable U : Unacceptable	N : Not Inspected/Rated C : Corrected A/W : Acceptable but Monitor & Maintain	+ Issue Type Ma : Maintenance Deficiency Ob : Design & System Obsolescence En : Enforcement
--	--	---	---

**Flood Control Project Maintenance
Levee Inspections**

Levee Inspection Report By Mile - Spring 2020

Sacramento Maintenance Yard Maintenance Area 0004

Waterway	Bank	Unit Miles	Inspection Start/End	Inspector
Unit No. 01 Sacramento River	Right	3.47	04/09/2020 04/09/2020	Luz Dial

LM Start	2.78	Rating **	M	Issue No.	87 (cont)
LM End	2.78	Issue Type +	En	Location *	
Category	Supplemental		GPS Latitude/Longitude		
			Start	End	
Item	DWR UCIP Field Study		38.590111 °	38.590111 °	
			-121.509695 °	-121.509695 °	
DWR ID	19406				

Photo 2 of 3 : UCIP_SP_2020_55311_81567.jpg



Waterside view: pipe daylights in a metal cage

LM Start	2.78	Rating **	M	Issue No.	87 (cont)
LM End	2.78	Issue Type +	En	Location *	

Photo 3 of 3 : UCIP_SP_2020_55311_81568.jpg



View of landside at the crossing

* Location LS : Land Side N/A : Not Applicable WS : Water Side CR : Crown	** Rating A : Acceptable M : Minimally Acceptable U : Unacceptable	N : Not Inspected/Rated C : Corrected A/W : Acceptable but Monitor & Maintain	+ Issue Type Ma : Maintenance Deficiency Ob : Design & System Obsolescence En : Enforcement
--	--	---	---

**Flood Control Project Maintenance
Levee Inspections**

Levee Inspection Report By Mile - Spring 2020

Sacramento Maintenance Yard Maintenance Area 0004

Waterway	Bank	Unit Miles	Inspection Start/End	Inspector
Unit No. 01 Sacramento River	Right	3.47	04/09/2020 04/09/2020	Luz Dial

LM Start	2.78	Rating **	M	Issue No.	88
LM End	2.78	Issue Type +	En	Location *	
Category	Supplemental			GPS Latitude/Longitude	
				Start	End
Item	DWR UCIP Field Study			38.590105 °	38.590105 °
				-121.509687 °	-121.509687 °
DWR ID	19407				
Comment Code					
Inspector Comment					
DS_ID:19407 FS_ID:55312 EP_NO: N/A Repair Type: Non-Urgent Crossing Status: Found UCIP Comments: 10/10/2019 Record remains Non-Urgent. No permit has been found authorizing this pipe through the levee. (O.Yakimov - DWR UCIP) 09/12/2012 Found during field survey. Not listed in the desk study. (P. Amatya - DWR UCIP) FIELD_STRUCT_DESC: 2 of 2: 5-inch wrapped galvanized iron (GI) water pipe through the levee, at an unknown depth. Pipe daylights in a metal cage box. Valve box for the pipe is also found. FS Date: 10/10/2019 11:57:04 AM					

Photo 1 of 3 : UCIP_SP_2020_55312_81569.jpg



Levee crown at the crossing

LM Start	2.78	Rating **	M	Issue No.	88 (cont)
LM End	2.78	Issue Type +	En	Location *	

Photo 2 of 3 : UCIP_SP_2020_55312_81570.jpg



Waterside view: a control valve box with a metal lid

* Location LS : Land Side N/A : Not Applicable WS : Water Side CR : Crown	** Rating A : Acceptable M : Minimally Acceptable U : Unacceptable	N : Not Inspected/Rated C : Corrected A/W : Acceptable but Monitor & Maintain	+ Issue Type Ma : Maintenance Deficiency Ob : Design & System Obsolescence En : Enforcement
--	--	---	---

**Flood Control Project Maintenance
Levee Inspections**

Levee Inspection Report By Mile - Spring 2020

Sacramento Maintenance Yard Maintenance Area 0004

Waterway	Bank	Unit Miles	Inspection Start/End	Inspector
Unit No. 01 Sacramento River	Right	3.47	04/09/2020 04/09/2020	Luz Dial

LM Start	2.78	Rating **	M	Issue No.	88 (cont)
LM End	2.78	Issue Type +	En	Location *	
Category	Supplemental			GPS Latitude/Longitude	
				Start	End
Item	DWR UCIP Field Study			38.590105 °	38.590105 °
				-121.509687 °	-121.509687 °
DWR ID	19407				

Photo 3 of 3 : UCIP_SP_2020_55312_81571.jpg



Waterside view: pipe daylights in a metal cage

LM Start	2.78	Rating **	M	Issue No.	68
LM End	2.92	Issue Type +	Ma	Location *	LS
Category	Earthen Levee			GPS Latitude/Longitude	
				Start	End
Item	Vegetation			38.590052 °	38.588772 °
				-121.509568 °	-121.507905 °
DWR ID	DWR_MA0004_01_s_2020_68				
Comment Code					
V1 : Control annual grass and weeds on the levee slopes and easements.					
Inspector Comment					

No Photos

LM Start	2.81	Rating **	C	Issue No.	25
LM End	2.81	Issue Type +	Ma	Location *	WS
Category	Earthen Levee			GPS Latitude/Longitude	
				Start	End
Item	Slope Stability			38.589834 °	38.589834 °
				-121.509110 °	-121.509110 °
DWR ID	DWR_MA0004_01_f_2019_25				
Comment Code					
S3 : Repair the levee slope damaged by vehicle traffic and prevent access where possible.					
Inspector Comment					

No Photos

* Location LS : Land Side N/A : Not Applicable WS : Water Side CR : Crown	** Rating A : Acceptable M : Minimally Acceptable U : Unacceptable	N : Not Inspected/Rated C : Corrected A/W : Acceptable but Monitor & Maintain	+ Issue Type Ma : Maintenance Deficiency Ob : Design & System Obsolescence En : Enforcement
--	--	---	---

**Flood Control Project Maintenance
Levee Inspections**

Levee Inspection Report By Mile - Spring 2020

Sacramento Maintenance Yard Maintenance Area 0004

Waterway	Bank	Unit Miles	Inspection Start/End	Inspector
Unit No. 01 Sacramento River	Right	3.47	04/09/2020 04/09/2020	Luz Dial

LM Start	2.91	Rating **	C	Issue No.	24
LM End	2.91	Issue Type +	Ma	Location *	WS
Category	Earthen Levee			GPS Latitude/Longitude	
				Start	End
Item	Slope Stability			38.588937 °	38.588937 °
				-121.507920 °	-121.507920 °
DWR ID	DWR_MA0004_01_s_2018_24				
Comment Code					
S2 : Repair the levee slope damaged by foot traffic and prevent access where possible.					
Inspector Comment					

No Photos

LM Start	2.91	Rating **	M	Issue No.	89
LM End	2.91	Issue Type +	En	Location *	
Category	Supplemental			GPS Latitude/Longitude	
				Start	End
Item	DWR UCIP Field Study			38.588920 °	38.588920 °
				-121.507920 °	-121.507920 °
DWR ID	18884				
Comment Code					
Inspector Comment					
DS_ID:18884 FS_ID:55313 EP_NO: N/A Repair Type: Non-Urgent Crossing Status: Not Found UCIP Comments: 10/10/2019 Record remains Non-Urgent. Crossing not found. No permit has been identified authorizing pipe. (O.Yakimov - DWR UCIP) FIELD_STRUCT_DESC: 1 of 4: 3-inch pipe of an unknown material or purpose through the levee, 18.6 feet below the crown. Pipe exposed and extends 10 feet from the bank and 5 feet above current water surface. Needs to be removed or grouted. [Additional Reference(s): DWR Levee Log, 2005. USACE Sacramento O&M Manual 116, August 1955, (RM 59.65)]. FS Date: 10/10/2019 1:01:27 PM					

No Photos

* Location LS : Land Side N/A : Not Applicable WS : Water Side CR : Crown	** Rating A : Acceptable M : Minimally Acceptable U : Unacceptable	N : Not Inspected/Rated C : Corrected A/W : Acceptable but Monitor & Maintain	+ Issue Type Ma : Maintenance Deficiency Ob : Design & System Obsolescence En : Enforcement
--	--	---	---

**Flood Control Project Maintenance
Levee Inspections**

Levee Inspection Report By Mile - Spring 2020

Sacramento Maintenance Yard Maintenance Area 0004

Waterway	Bank	Unit Miles	Inspection Start/End	Inspector
Unit No. 01 Sacramento River	Right	3.47	04/09/2020 04/09/2020	Luz Dial

LM Start	2.92	Rating **	U	Issue No.	23
LM End	2.95	Issue Type +	En	Location *	LS
Category	Earthen Levee			GPS Latitude/Longitude	
				Start	End
Item	Encroachments			38.588762 °	38.588384 °
				-121.507951 °	-121.507894 °
DWR ID	DWR_MA0004_01_f _ 2016_23				
Comment Code					
FE : Fence					
Inspector Comment					

Photo 1 of 1 : SP_2020_MA0004_298_23_20200302_00015.jpg



View of fence on LS slope. Fall 2016.

LM Start	2.92	Rating **	M	Issue No.	28
LM End	2.92	Issue Type +	Ma	Location *	WS
Category	Earthen Levee			GPS Latitude/Longitude	
				Start	End
Item	Slope Stability			38.588740 °	38.588740 °
				-121.507894 °	-121.507894 °
DWR ID	DWR_MA0004_01_f_2018_28				
Comment Code					
S1 : Repair slope instability.					
Inspector Comment					
The LMA repaired some slope damage in the area, but a recent large hole 1' deep was dug into the levee slope.					

Photo 1 of 1 : SP_2020_MA0004_298_28_20200409_00074.jpg



View of a hole dug into the waterside slope. Spring 2020

*** Location**
LS : Land Side N/A : Not Applicable
WS : Water Side
CR : Crown

**** Rating**
A : Acceptable N : Not Inspected/Rated
M : Minimally Acceptable C : Corrected
U : Unacceptable A/W : Acceptable but Monitor & Maintain

+ Issue Type
Ma : Maintenance Deficiency
Ob : Design & System Obsolescence
En : Enforcement

**Flood Control Project Maintenance
Levee Inspections**

Levee Inspection Report By Mile - Spring 2020

Sacramento Maintenance Yard Maintenance Area 0004

Waterway	Bank	Unit Miles	Inspection Start/End	Inspector
Unit No. 01 Sacramento River	Right	3.47	04/09/2020 04/09/2020	Luz Dial

LM Start	2.93	Rating **	M	Issue No.	90
LM End	2.93	Issue Type +	En	Location *	
Category	Supplemental			GPS Latitude/Longitude	
				Start	End
Item	DWR UCIP Field Study			38.588688 °	38.588688 °
				-121.507910 °	-121.507910 °
DWR ID	18886				
Comment Code					
Inspector Comment					
DS_ID:18886 FS_ID:55314 EP_NO: N/A Repair Type: Non-Urgent Crossing Status: Found UCIP Comments: 10/10/2019 Record remains Non-Urgent. Crossing appears abandoned. No permit has been identified authorizing pipe. Pipe end is visible on river's edge. Homeless people installed camping tents nearby. Geophysical results did not confirm presence of pipe through levee. Record will remain in UCIP's inspection records until future Levee Improvement Project can confirm no crossing was found through the levee. Unable to locate a permit and confirm proper pipe abandonment. (O.Yakimov - DWR UCIP) 09/12/2012 Grouted 10-inch pipe on water side of the levee. (P.Amatya - DWR UCIP) FIELD_STRUCT_DESC: 2 of 4: 10-inch pipe of an unknown material or purpose through the levee, 18.6 feet below the crown. Pipe exposed and extends 10 feet from the bank and 5 feet above current water surface. Needs to be removed or grouted. [Additional Reference(s): DWR Levee Log, 2005 (HLM 2.88). USACE Sacramento O&M Manual 116, August 1955, (RM 59.65)]. FS Date: 10/10/2019 1:17:20 PM					

LM Start	2.93	Rating **	M	Issue No.	90 (cont)
LM End	2.93	Issue Type +	En	Location *	

Photo 1 of 3 : UCIP_SP_2020_55314_81572.jpg



View of levee crown at crossing

Photo 2 of 3 : UCIP_SP_2020_55314_81574.jpg



Land side view- inside water tower area

* Location LS : Land Side N/A : Not Applicable WS : Water Side CR : Crown	** Rating A : Acceptable M : Minimally Acceptable U : Unacceptable	N : Not Inspected/Rated C : Corrected A/W : Acceptable but Monitor & Maintain	+ Issue Type Ma : Maintenance Deficiency Ob : Design & System Obsolescence En : Enforcement
--	--	---	---

**Flood Control Project Maintenance
Levee Inspections**

Levee Inspection Report By Mile - Spring 2020

Sacramento Maintenance Yard Maintenance Area 0004

Waterway	Bank	Unit Miles	Inspection Start/End	Inspector
Unit No. 01 Sacramento River	Right	3.47	04/09/2020 04/09/2020	Luz Dial

LM Start	2.93	Rating **	M	Issue No.	91 (cont)	
LM End	2.93	Issue Type +	En	Location *		
Category	Supplemental			GPS Latitude/Longitude		
				Start	End	
Item	DWR UCIP Field Study			38.588688 °	38.588688 °	
				-121.507910 °	-121.507910 °	
DWR ID	18883					

Photo 2 of 3 : UCIP_SP_2020_55315_81577.jpg



Overview of waterside at pipe crossing

LM Start	2.93	Rating **	M	Issue No.	91 (cont)
LM End	2.93	Issue Type +	En	Location *	

Photo 3 of 3 : UCIP_SP_2020_55315_9770.jpg



Land side view- abandoned pipes inside the tower area

* Location LS : Land Side N/A : Not Applicable WS : Water Side CR : Crown	** Rating A : Acceptable M : Minimally Acceptable U : Unacceptable	N : Not Inspected/Rated C : Corrected A/W : Acceptable but Monitor & Maintain	+ Issue Type Ma : Maintenance Deficiency Ob : Design & System Obsolescence En : Enforcement
--	--	---	---

**Flood Control Project Maintenance
Levee Inspections**

Levee Inspection Report By Mile - Spring 2020

Sacramento Maintenance Yard Maintenance Area 0004

Waterway	Bank	Unit Miles	Inspection Start/End	Inspector
Unit No. 01 Sacramento River	Right	3.47	04/09/2020 04/09/2020	Luz Dial

LM Start	2.93	Rating **	M	Issue No.	92
LM End	2.93	Issue Type +	En	Location *	
Category	Supplemental			GPS Latitude/Longitude	
				Start	End
Item	DWR UCIP Field Study			38.588688 °	38.588688 °
				-121.507910 °	-121.507910 °
DWR ID	18885				

Comment Code

Inspector Comment

DS_ID:18885
FS_ID:55316
EP_NO: N/A
Repair Type: Non-Urgent
Crossing Status: Found
UCIP Comments: 10/10/2019 Record remains Non-Urgent.
Geophysical results did not confirm presence of pipe through levee.
Record will remain in UCIP's inspection records until future Levee Improvement Project can confirm no crossing was found through the levee. No permit has been identified authorizing pipe. Crossing appears abandoned. (O.Yakimov - DWR UCIP)
FIELD_STRUCT_DESC: 4 of 4: 7-inch pipe of an unknown material or purpose through the levee, 18.6 feet below the crown. Unable to locate. Pipe exposed and extends 10 feet from the bank and 5 feet above current water surface. Needs to be removed or grouted. [Additional Reference(s): DWR Levee Log, 2005. USACE Sacramento O&M Manual 116, August 1955, (RM 59.65)].
FS Date: 10/10/2019 2:12:14 PM

LM Start	2.93	Rating **	M	Issue No.	92 (cont)
LM End	2.93	Issue Type +	En	Location *	

Photo 1 of 3 : UCIP_SP_2020_55316_81578.jpg



Land side view: water tower area

Photo 2 of 3 : UCIP_SP_2020_55316_81579.jpg



Overview of waterside at pipe crossing

*** Location**

LS : Land Side N/A : Not Applicable
WS : Water Side
CR : Crown

**** Rating**

A : Acceptable N : Not Inspected/Rated
M : Minimally Acceptable C : Corrected
U : Unacceptable A/W : Acceptable but Monitor & Maintain

+ Issue Type

Ma : Maintenance Deficiency
Ob : Design & System Obsolescence
En : Enforcement

**Flood Control Project Maintenance
Levee Inspections**

Levee Inspection Report By Mile - Spring 2020

Sacramento Maintenance Yard Maintenance Area 0004

Waterway	Bank	Unit Miles	Inspection Start/End	Inspector
Unit No. 01 Sacramento River	Right	3.47	04/09/2020 04/09/2020	Luz Dial

LM Start	2.93	Rating **	M	Issue No.	92 (cont)
LM End	2.93	Issue Type +	En	Location *	
Category	Supplemental			GPS Latitude/Longitude	
				Start	End
Item	DWR UCIP Field Study			38.588688 °	38.588688 °
				-121.507910 °	-121.507910 °
DWR ID	18885				

Photo 3 of 3 : UCIP_SP_2020_55316_81580.jpg



View inside of water tower area

LM Start	2.93	Rating **	M	Issue No.	69
LM End	2.93	Issue Type +	Ma	Location *	WS
Category	Earthen Levee			GPS Latitude/Longitude	
				Start	End
Item	Slope Stability			38.588553 °	38.588553 °
				-121.507878 °	-121.507878 °
DWR ID	DWR_MA0004_01_s_2020_69				
Comment Code					
S2 : Repair the levee slope damaged by foot traffic and prevent access where possible.					
Inspector Comment					
Stairs are dug into the levee slope.					

No Photos

LM Start	2.95	Rating **	M	Issue No.	42
LM End	2.95	Issue Type +	Ma	Location *	WS
Category	Earthen Levee			GPS Latitude/Longitude	
				Start	End
Item	Encroachments			38.588333 °	38.588333 °
				-121.507870 °	-121.507870 °
DWR ID	DWR_MA0004_01_f_2019_42				
Comment Code					
TR : Tree or limb					
Inspector Comment					
Remove large tree debris from the waterside toe.					

No Photos

* Location LS : Land Side N/A : Not Applicable WS : Water Side CR : Crown	** Rating A : Acceptable M : Minimally Acceptable U : Unacceptable	N : Not Inspected/Rated C : Corrected A/W : Acceptable but Monitor & Maintain	+ Issue Type Ma : Maintenance Deficiency Ob : Design & System Obsolescence En : Enforcement
--	--	---	---

**Flood Control Project Maintenance
Levee Inspections**

Levee Inspection Report By Mile - Spring 2020

Sacramento Maintenance Yard Maintenance Area 0004

Waterway	Bank	Unit Miles	Inspection Start/End	Inspector
Unit No. 01 Sacramento River	Right	3.47	04/09/2020 04/09/2020	Luz Dial

LM Start	2.99	Rating **	M	Issue No.	93	
LM End	2.99	Issue Type +	En	Location *		
Category	Supplemental			GPS Latitude/Longitude		
				Start		End
Item	DWR UCIP Field Study			38.587760 °	38.587760 °	
				-121.507930 °	-121.507930 °	
DWR ID	266					
Comment Code						
Inspector Comment						
DS_ID:266 FS_ID:55317 EP_NO: 16702 Repair Type: Non-Urgent Crossing Status: Not Found UCIP Comments: 10/10/2019 Record remains Non-Urgent. Crossing not found. (O.Yakimov - DWR UCIP) FIELD_STRUCT_DESC: 4.5-inch polyvinyl chloride (PVC) irrigation pipe through the levee, 2 feet below the crown. Public facilities and four stairways on the levee slope. Observation/fishing dock on the waterside (WS) of the levee. (4-inch irrigation pipe and 1-inch potable water main line authorized under Permit No. 16702, 1997 - City of West Sacramento). FS Date: 10/10/2019 2:36:29 PM						

LM Start	2.99	Rating **	M	Issue No.	93 (cont)
LM End	2.99	Issue Type +	En	Location *	

Photo 1 of 3 : UCIP_SP_2020_55317_81581.jpg



View of levee crown at possible crossing

Photo 2 of 3 : UCIP_SP_2020_55317_81582.jpg



Riverbank near possible crossing

* Location LS : Land Side N/A : Not Applicable WS : Water Side CR : Crown	** Rating A : Acceptable M : Minimally Acceptable U : Unacceptable	N : Not Inspected/Rated C : Corrected A/W : Acceptable but Monitor & Maintain	+ Issue Type Ma : Maintenance Deficiency Ob : Design & System Obsolescence En : Enforcement
--	--	---	---

**Flood Control Project Maintenance
Levee Inspections**

Levee Inspection Report By Mile - Spring 2020

Sacramento Maintenance Yard Maintenance Area 0004

Waterway	Bank	Unit Miles	Inspection Start/End	Inspector
Unit No. 01 Sacramento River	Right	3.47	04/09/2020 04/09/2020	Luz Dial

LM Start	2.99	Rating **	M	Issue No.	93 (cont)
LM End	2.99	Issue Type +	En	Location *	
Category	Supplemental			GPS Latitude/Longitude	
				Start	End
Item	DWR UCIP Field Study			38.587760 °	38.587760 °
				-121.507930 °	-121.507930 °
DWR ID	266				

Photo 3 of 3 : UCIP_SP_2020_55317_81583.jpg



View of WS slope at possible crossing

LM Start	3.00	Rating **	C	Issue No.	43
LM End	3.00	Issue Type +	Ma	Location *	LS
Category	Earthen Levee			GPS Latitude/Longitude	
				Start	End
Item	Slope Stability			38.587608 °	38.587608 °
				-121.507907 °	-121.507907 °
DWR ID	DWR_MA0004_01_f_2019_43				
Comment Code					
S3 : Repair the levee slope damaged by vehicle traffic and prevent access where possible.					
Inspector Comment					

No Photos

LM Start	3.00	Rating **	C	Issue No.	45
LM End	3.00	Issue Type +	Ma	Location *	WS
Category	Earthen Levee			GPS Latitude/Longitude	
				Start	End
Item	Slope Stability			38.587608 °	38.587608 °
				-121.507907 °	-121.507907 °
DWR ID	DWR_MA0004_01_f _ 2019_45				
Comment Code					
S3 : Repair the levee slope damaged by vehicle traffic and prevent access where possible.					
Inspector Comment					

No Photos

* Location LS : Land Side N/A : Not Applicable WS : Water Side CR : Crown	** Rating A : Acceptable M : Minimally Acceptable U : Unacceptable	N : Not Inspected/Rated C : Corrected A/W : Acceptable but Monitor & Maintain	+ Issue Type Ma : Maintenance Deficiency Ob : Design & System Obsolescence En : Enforcement
--	--	---	---

**Flood Control Project Maintenance
Levee Inspections**

Levee Inspection Report By Mile - Spring 2020

Sacramento Maintenance Yard Maintenance Area 0004

Waterway	Bank	Unit Miles	Inspection Start/End	Inspector
Unit No. 01 Sacramento River	Right	3.47	04/09/2020 04/09/2020	Luz Dial

LM Start	3.08	Rating **	M	Issue No.	70
LM End	3.13	Issue Type +	Ma	Location *	LS
Category	Earthen Levee			GPS Latitude/Longitude	
				Start	End
Item	Vegetation			38.586478 °	38.585760 °
				-121.508050 °	-121.508285 °
DWR ID	DWR_MA0004_01_s _ 2020_70				
Comment Code					
V1 : Control annual grass and weeds on the levee slopes and easements.					
Inspector Comment					

No Photos

LM Start	3.08	Rating **	A/W	Issue No.	12
LM End	3.45	Issue Type +	En	Location *	WS
Category	Earthen Levee			GPS Latitude/Longitude	
				Start	End
Item	Vegetation			38.586434 °	38.581349 °
				-121.508090 °	-121.509547 °
DWR ID	DWR_MA0004_01_s _ 2012_12				
Comment Code					
V6 : Landscaping					
Inspector Comment					
West Sacramento's River Walk runs from Tower Bridge to the I Street bridge.					

Photo 1 of 1 : SP_2020_MA0004_298_12_20200302_00003.jpg



The Riverwalk is part of the landscape on the levee. Fall 2015.

*** Location**
 LS : Land Side N/A : Not Applicable
 WS : Water Side
 CR : Crown

**** Rating**
 A : Acceptable N : Not Inspected/Rated
 M : Minimally Acceptable C : Corrected
 U : Unacceptable A/W : Acceptable but Monitor & Maintain

+ Issue Type
 Ma : Maintenance Deficiency
 Ob : Design & System Obsolescence
 En : Enforcement

**Flood Control Project Maintenance
Levee Inspections**

Levee Inspection Report By Mile - Spring 2020

Sacramento Maintenance Yard Maintenance Area 0004

Waterway	Bank	Unit Miles	Inspection Start/End	Inspector
Unit No. 01 Sacramento River	Right	3.47	04/09/2020 04/09/2020	Luz Dial

LM Start	3.20	Rating **	M	Issue No.	94	
LM End	3.20	Issue Type +	En	Location *		
Category	Supplemental			GPS Latitude/Longitude		
				Start	End	
Item	DWR UCIP Field Study			38.584860 °	38.584860 °	
				-121.508500 °	-121.508500 °	
DWR ID	268					
Comment Code						
Inspector Comment						
DS_ID:268 FS_ID:55346 EP_NO: 17058 Repair Type: Non-Urgent Crossing Status: Not Found UCIP Comments: 10/10/2019 Record updated from No Action Needed to Non-Urgent, unable to determine status of crossing. Crossing not found. (O.Yakimov - DWR UCIP) FIELD_STRUCT_DESC: Three 2-inch and two 1.5-inch fiber optics conduits of an unknown material across and bored under the Sacramento River and its west levee. Note in permit indicates this was not installed. FS Date: 10/10/2019 1:36:42 PM						

Photo 1 of 1 : UCIP_SP_2020_55346_81587.jpg



Paved levee crown at possible crossing

LM Start	3.24	Rating **	M	Issue No.	27
LM End	3.29	Issue Type +	En	Location *	LS
Category	Earthen Levee			GPS Latitude/Longitude	
				Start	End
Item	Encroachments			38.584168 °	38.583435 °
				-121.508632 °	-121.508785 °
DWR ID	DWR_MA0004_01_f_2015_27				
Comment Code					
FE : Fence					
Inspector Comment					
The fence on the levee shoulder appears to be unauthorized.					

Photo 1 of 1 : SP_2020_MA0004_298_27_20200302_00018.jpg



View looking downstream at the fence on the crown of the levee . Fall 2015.

* Location
 LS : Land Side N/A : Not Applicable
 WS : Water Side
 CR : Crown

** Rating
 A : Acceptable
 M : Minimally Acceptable
 U : Unacceptable
 N : Not Inspected/Rated
 C : Corrected
 A/W : Acceptable but Monitor & Maintain

+ Issue Type
 Ma : Maintenance Deficiency
 Ob : Design & System Obsolescence
 En : Enforcement

**Flood Control Project Maintenance
Levee Inspections**

Levee Inspection Report By Mile - Spring 2020

Sacramento Maintenance Yard Maintenance Area 0004

Waterway	Bank	Unit Miles	Inspection Start/End	Inspector
Unit No. 01 Sacramento River	Right	3.47	04/09/2020 04/09/2020	Luz Dial

LM Start	3.42	Rating **	M	Issue No.	95	
LM End	3.42	Issue Type +	En	Location *		
Category	Supplemental			GPS Latitude/Longitude		
				Start		End
Item	DWR UCIP Field Study			38.581697 °		38.581697 °
				-121.509358 °		-121.509358 °
DWR ID	271					
Comment Code						
Inspector Comment						
DS_ID:271						
FS_ID:55349						
EP_NO: 16702						
Repair Type: Non-Urgent						
Crossing Status: Not Found						
UCIP Comments: 10/10/2019 Record updated from No Action Needed to Non-Urgent, unable to determine status of crossing. Crossing not found. (O.Yakimov - DWR UCIP)						
FIELD_STRUCT_DESC: 4.5-inch polyvinyl chloride (PVC) irrigation pipe through the levee, 2 feet below the crown. Public facilities and four stairways on the levee slope. Observation/fishing dock on the waterside (WS). (4-inch irrigation pipe and 1-inch potable water main line authorized under Permit No. 16702, 1997 - City of West Sacramento).						
FS Date: 10/10/2019 1:54:14 PM						

LM Start	3.42	Rating **	M	Issue No.	95 (cont)
LM End	3.42	Issue Type +	En	Location *	

Photo 1 of 2 : UCIP_SP_2020_55349_81591.jpg



View of LS at potential crossing

Photo 2 of 2 : UCIP_SP_2020_55349_81592.jpg



View of WS slope at potential crossing

* Location LS : Land Side N/A : Not Applicable WS : Water Side CR : Crown	** Rating A : Acceptable M : Minimally Acceptable U : Unacceptable	N : Not Inspected/Rated C : Corrected A/W : Acceptable but Monitor & Maintain	+ Issue Type Ma : Maintenance Deficiency Ob : Design & System Obsolescence En : Enforcement
--	--	---	---

**Flood Control Project Maintenance
Levee Inspections**

Levee Inspection Report By Mile - Spring 2020

Sacramento Maintenance Yard Maintenance Area 0004

Waterway	Bank	Unit Miles	Inspection Start/End	Inspector
Unit No. 01 Sacramento River	Right	3.47	04/09/2020 04/09/2020	Luz Dial

LM Start	3.42	Rating **	U	Issue No.	71
LM End	3.42	Issue Type +	Ma	Location *	WS
Category	Earthen Levee			GPS Latitude/Longitude	
				Start	End
Item	Animal Control			38.581668 °	38.581668 °
				-121.509382 °	-121.509382 °
DWR ID	DWR_MA0004_01_s _ 2020_71				
Comment Code					
A1 : Exterminate rodents and backfill and compact or grout burrows.					
Inspector Comment					

Photo 1 of 1 : SP_2020_MA0004_298_71_20200409_00073.jpg



View of active animal burrows on the landside slope. Spring 2020

* Location LS : Land Side N/A : Not Applicable WS : Water Side CR : Crown	** Rating A : Acceptable M : Minimally Acceptable U : Unacceptable	N : Not Inspected/Rated C : Corrected A/W : Acceptable but Monitor & Maintain	+ Issue Type Ma : Maintenance Deficiency Ob : Design & System Obsolescence En : Enforcement
--	--	---	---