

**Flood Control Project Maintenance
Levee Inspections**

Fall 2015 Levee Maintenance Deficiency Summary Report

Overall LMA & Unit Ratings, including USACE Erosion Survey

Sacramento River Basin

LD0009	Overall LMA Rating	Total LMA Miles	* Overall LMA Threshold Percent is less than 10.00%; however, U Rated Miles are present, so the Overall LMA Rating is M instead of A.					
Levee District No. 0009 (Sutter County)	M *	6.25						
Rated Item	Maintenance Deficiency				Enforcement		Design & System Obsolescence	
	M Miles	U Miles	M + 4U Miles	Threshold %	M Miles	U Miles	M Miles	U Miles
<i>Earthen Levee</i>								
Vegetation					0.01			
Encroachments					0.18	0.01		
Animal Control		0.01	0.04	0.64%				
<i>Supplemental</i>								
DWR UCIP Field Study					0.07	0.03		
<i>LMA Totals:</i>	0.00	0.01	0.04	0.64% *	0.26	0.04	0.00	0.00

**Flood Control Project Maintenance
Levee Inspections**
LMA District Cover Sheet
Fall 2015 Levee Inspection Results

Levee District No. 0009 (Sutter County)

	Spring (March - May)	Summer ** (June - August)	Fall (September - November)	Winter ** (December - February)
* Overall LMA Rating (Fall Only)			M	

** Non-receipt of Summer or Winter Inspection Reports may effect overall annual rating.

*
SPRING INSPECTIONS: Overall maintenance ratings are not determined for the spring inspection results. Individual maintenance deficiencies are rated using the same criteria in the spring and in the fall.

FALL INSPECTIONS: The overall maintenance rating shown above is based on operation and maintenance deficiencies identified within the attached unit inspection reports. This rating is not intended to be an indication of risk.

Comments

**Flood Control Project Maintenance
Levee Inspections**

Unit Cover Sheet

Fall 2015 Levee Inspection Results

Levee District No. 0009 (Sutter County)

Waterway			Bank	Unit Miles
Unit No. 01 Sutter County, Feather River			Right	6.25
	Spring (March - May)	Summer (June - August)	(September - November) Fall	Winter (December - February)
Unit Maintenance Rating (Fall Only)			M	
Date of Inspection	05/20/2015 - 05/20/2015		11/16/2015 - 11/16/2015	
DWR Inspector	Michael Pitta		Keith Millard	
Accompanied By	David Schmidl		David Schmidl	

Summer & Winter Inspections

The Local Maintaining Agency (LMA) is responsible for summer and winter inspections. The LMA is required to submit a report regarding summer and winter inspections to the California Department of Water Resources (DWR).

DWR must be informed on the:

- a) completion of the inspection
- b) any changes other than the results of normal maintenance
- c) corrections to deficiencies noted in this report

If additional items are noted, further documentation of those items must also be submitted.

The LMA should submit this information to DWR using the LMA web application tool available at:

<http://cdec.water.ca.gov/lma.html>

If the LMA is unable to submit information on this webpage, please contact DWR for assistance.

The LMA should submit the information and any associated documentation by September 30 for summer inspections and March 31 for winter inspections.

**Flood Control Project Maintenance
Levee Inspections**

Levee Inspection Report By Mile - Fall 2015

Levee District No. 0009 (Sutter County)

Waterway	Bank	Unit Miles	Inspection Start/End	Inspector
Unit No. 01 Sutter County, Feather River	Right	6.25	11/16/2015 11/16/2015	Keith Millard

LM Start		Rating **	A	Issue No.	4
LM End		Issue Type +	Ma	Location *	LS
Category	Earthen Levee			GPS Latitude/Longitude	
				Start	End
Item	Emergency Supplies & Equipment				°
					°
DWR ID	DWR_LD0009_01_s _ 2013_4				
Action/Comments					
Inspector Comments: LD 9 has flood fight supplies on hand and coordinates with other local levee districts in the flood fight supply staging program.					

No Photos

LM Start		Rating **	A	Issue No.	5	
LM End		Issue Type +	Ma	Location *	LS	
Category	Earthen Levee			GPS Latitude/Longitude		
				Start		End
Item	Operations & Maintenance Manuals				o	
					o	
DWR ID	DWR_LD0009_01_s _ 2013_5					
Action/Comments						
Inspector Comments: The levee district has stated in the past that they have a copy of the O&M manuals.						

No Photos

LM Start		Rating **	A	Issue No.	6	
LM End		Issue Type +	Ma	Location *	LS	
Category	Earthen Levee			GPS Latitude/Longitude		
				Start		End
Item	Flood Preparedness & Training				°	
					°	
DWR ID	DWR_LD0009_01_s _ 2013_6					
Action/Comments						
Inspector Comments: The district has attended the Flood Fight class put on by RD 784 and DWR.						

No Photos

* Location LS : Land Side N/A : Not Applicable WS : Water Side CR : Crown		** Rating A : Acceptable N : Not Inspected/Rated M : Minimally Acceptable C : Corrected U : Unacceptable A/W : Acceptable but Monitor & Maintain		+ Issue Type Ma : Maintenance Deficiency Ob : Design & System Obsolescence En : Enforcement
--	--	---	--	---

**Flood Control Project Maintenance
Levee Inspections**

Levee Inspection Report By Mile - Fall 2015

Levee District No. 0009 (Sutter County)

Waterway	Bank	Unit Miles	Inspection Start/End	Inspector
Unit No. 01 Sutter County, Feather River	Right	6.25	11/16/2015 11/16/2015	Keith Millard

LM Start	0.00	Rating **	M	Issue No.	26
LM End	0.00	Issue Type +	En	Location *	LS
Category	Supplemental			GPS Latitude/Longitude	
				Start	End
Item	DWR UCIP Field Study			39.168829 °	39.168829 °
				-121.622643 °	-121.622643 °
DWR ID					
Action/Comments					
Inspector Comments: FS_ID:41944 DS_ID:22685 EP_NO: N/A FS_HLM: 0 Repair Type: Non-Urgent Crossing Status: Found UCIP Comments: No permit identified. FIELD_STRUCT_DESC: Fiber optic communication line at unknown depth below the crown. FS Date: 03/03/2013					

Photo 1 of 3 : UCIP_FA_2015_2193.jpg



Fiber optic line marker on LS shoulder.

Photo 2 of 3 : UCIP_FA_2015_2194.jpg



Fiber optic line marker on LS shoulder.

* Location LS : Land Side N/A : Not Applicable WS : Water Side CR : Crown		** Rating A : Acceptable M : Minimally Acceptable U : Unacceptable N : Not Inspected/Rated C : Corrected A/W : Acceptable but Monitor & Maintain		+ Issue Type Ma : Maintenance Deficiency Ob : Design & System Obsolescence En : Enforcement	
---	--	--	--	--	--

**Flood Control Project Maintenance
Levee Inspections**

Levee Inspection Report By Mile - Fall 2015

Levee District No. 0009 (Sutter County)

Waterway	Bank	Unit Miles	Inspection Start/End	Inspector
Unit No. 01 Sutter County, Feather River	Right	6.25	11/16/2015 11/16/2015	Keith Millard

LM Start	0.00	Rating **	M	Issue No.	26 (cont)
LM End	0.00	Issue Type +	En	Location *	LS
Category	Supplemental			GPS Latitude/Longitude	
				Start	End
Item	DWR UCIP Field Study			39.168829 °	39.168829 °
				-121.622643 °	-121.622643 °
DWR ID					
Action/Comments					
Inspector Comments: FS_ID:41944 DS_ID:22685 EP_NO: N/A FS_HLM: 0 Repair Type: Non-Urgent Crossing Status: Found					

Photo 3 of 3 : UCIP_FA_2015_2195.jpg



Fiber optic line marker on LS shoulder

LM Start	0.00	Rating **	M	Issue No.	27
LM End	0.00	Issue Type +	En	Location *	LS
Category	Supplemental			GPS Latitude/Longitude	
				Start	End
Item	DWR UCIP Field Study			39.168906 °	39.168906 °
				-121.622629 °	-121.622629 °
DWR ID					
Action/Comments					
Inspector Comments: FS_ID:9595					
DS_ID:17792					
EP_NO: 3823					
FS_HLM: 0					
Repair Type: Non-Urgent					
Crossing Status: Indicator Found					
UCIP Comments: Need better gas-line markings at levees.					
FIELD_STRUCT_DESC: 8-5/8-inch fuel line along the landward					
shoulder, 2.6 feet below the crown. Gasline marker on LS shoulder					
FS Date: 03/01/2013					

Photo 1 of 1 : UCIP_FA_2015_0472.jpg



Marker on LS shoulder.

* Location LS : Land Side N/A : Not Applicable WS : Water Side CR : Crown		** Rating A : Acceptable M : Minimally Acceptable U : Unacceptable N : Not Inspected/Rated C : Corrected A/W : Acceptable but Monitor & Maintain		+ Issue Type Ma : Maintenance Deficiency Ob : Design & System Obsolescence En : Enforcement	
---	--	--	--	--	--

**Flood Control Project Maintenance
Levee Inspections**

Levee Inspection Report By Mile - Fall 2015

Levee District No. 0009 (Sutter County)

Waterway	Bank	Unit Miles	Inspection Start/End	Inspector
Unit No. 01 Sutter County, Feather River	Right	6.25	11/16/2015 11/16/2015	Keith Millard

LM Start	0.00	Rating **	M	Issue No.	28
LM End	0.00	Issue Type +	En	Location *	LS
Category	Supplemental			GPS Latitude/Longitude	
				Start	End
Item	DWR UCIP Field Study			39.168909 °	39.168909 °
				-121.622629 °	-121.622629 °
DWR ID					

Action/Comments

Inspector Comments: FS_ID:9592
 DS_ID:17793
 EP_NO: N/A
 FS_HLM: 0
 Repair Type: Non-Urgent
 Crossing Status: Indicator Found
 UCIP Comments: Need better gas-line markings at levees.
 FIELD_STRUCT_DESC: 8-5/8-inch fuel line through the levee. Sign on LS between railroad and end of LD1 puts alignment on west side of RR tracks.
 FS Date: 03/01/2013

Photo 1 of 1 : UCIP_FA_2015_0471.jpg



Sign between railroad and LD 1 puts alignment on west side of railroad tracks.

LM Start	0.04	Rating **	U	Issue No.	29
LM End	0.04	Issue Type +	En	Location *	LS
Category	Supplemental			GPS Latitude/Longitude	
				Start	End
Item	DWR UCIP Field Study			39.169339 °	39.169339 °
				-121.622616 °	-121.622616 °
DWR ID					

Action/Comments

Inspector Comments: FS_ID:41828
 DS_ID:17791
 EP_NO: N/A
 FS_HLM: 0.03
 Repair Type: Urgent
 Crossing Status: Indicator Found
 UCIP Comments: gas lines need to be better marked in this area as they are only 2.6-feet below crown.
 FIELD_STRUCT_DESC: 8-5/8-inch diameter fuel line along the landward shoulder, 2.6 feet below the crown.
 FS Date: 03/01/2013

No Photos

* Location LS : Land Side N/A : Not Applicable WS : Water Side CR : Crown		** Rating A : Acceptable M : Minimally Acceptable U : Unacceptable		N : Not Inspected/Rated C : Corrected A/W : Acceptable but Monitor & Maintain		+ Issue Type Ma : Maintenance Deficiency Ob : Design & System Obsolescence En : Enforcement
--	--	--	--	---	--	---

**Flood Control Project Maintenance
Levee Inspections**

Levee Inspection Report By Mile - Fall 2015

Levee District No. 0009 (Sutter County)

Waterway	Bank	Unit Miles	Inspection Start/End	Inspector
Unit No. 01 Sutter County, Feather River	Right	6.25	11/16/2015 11/16/2015	Keith Millard

LM Start	0.10	Rating **	M	Issue No.	30
LM End	0.10	Issue Type +	En	Location *	LS
Category	Supplemental			GPS Latitude/Longitude	
				Start	End
Item	DWR UCIP Field Study			39.170153 °	39.170153 °
				-121.622546 °	-121.622546 °
DWR ID					
Action/Comments					
Inspector Comments: FS_ID:9596 DS_ID:17790 EP_NO: N/A FS_HLM: 0.08 Repair Type: Non-Urgent Crossing Status: Indicator Found UCIP Comments: Need better gas-line markings at levees. FIELD_STRUCT_DESC: 16-inch gas line through the levee, 3.5 feet below the crown. Marker on LS toe. Permit No. 1913, 1954, PG&E. FS Date: 03/01/2013					

Photo 1 of 2 : UCIP_FA_2015_0473.jpg



Close up of Gasline marker at LS toe.

LM Start	0.10	Rating **	M	Issue No.	30 (cont)
LM End	0.10	Issue Type +	En	Location *	LS

Photo 2 of 2 : UCIP_FA_2015_0474.jpg



Gasline marker at LS toe.

* Location LS : Land Side N/A : Not Applicable WS : Water Side CR : Crown		** Rating A : Acceptable N : Not Inspected/Rated M : Minimally Acceptable C : Corrected U : Unacceptable A/W : Acceptable but Monitor & Maintain		+ Issue Type Ma : Maintenance Deficiency Ob : Design & System Obsolescence En : Enforcement	
--	--	---	--	---	--

**Flood Control Project Maintenance
Levee Inspections**

Levee Inspection Report By Mile - Fall 2015

Levee District No. 0009 (Sutter County)

Waterway	Bank	Unit Miles	Inspection Start/End	Inspector
Unit No. 01 Sutter County, Feather River	Right	6.25	11/16/2015 11/16/2015	Keith Millard

LM Start	0.96	Rating **	M	Issue No.	31
LM End	0.96	Issue Type +	En	Location *	LS
Category	Supplemental			GPS Latitude/Longitude	
				Start	End
Item	DWR UCIP Field Study			39.182607 °	39.182607 °
				-121.620775 °	-121.620775 °
DWR ID					
Action/Comments					
Inspector Comments: FS_ID:9598 DS_ID:17788 EP_NO: N/A FS_HLM: 0.951 Repair Type: Non-Urgent Crossing Status: Found					

Photo 1 of 2 : UCIP_FA_2015_0475.jpg



Pipe at crown on LS shoulder.

LM Start	0.96	Rating **	M	Issue No.	31 (cont)
LM End	0.96	Issue Type +	En	Location *	LS

Photo 2 of 2 : UCIP_FA_2015_0476.jpg



Pipe at crown on LS shoulder.

LM Start	1.33	Rating **	M	Issue No.	32
LM End	1.33	Issue Type +	En	Location *	LS
Category	Supplemental			GPS Latitude/Longitude	
				Start	End
Item	DWR UCIP Field Study			39.187995 °	39.187995 °
				-121.620706 °	-121.620706 °
DWR ID					
Action/Comments					
Inspector Comments: FS_ID:9601 DS_ID:17785 EP_NO: N/A FS_HLM: 1.324 Repair Type: Non-Urgent Crossing Status: Indicator Found					

Photo 1 of 2 : UCIP_FA_2015_0477.jpg



JP at pump on LS toe.

* Location LS : Land Side N/A : Not Applicable WS : Water Side CR : Crown		** Rating A : Acceptable M : Minimally Acceptable U : Unacceptable N : Not Inspected/Rated C : Corrected A/W : Acceptable but Monitor & Maintain		+ Issue Type Ma : Maintenance Deficiency Ob : Design & System Obsolescence En : Enforcement	
--	--	---	--	---	--

**Flood Control Project Maintenance
Levee Inspections**

Levee Inspection Report By Mile - Fall 2015

Levee District No. 0009 (Sutter County)

Waterway	Bank	Unit Miles	Inspection Start/End	Inspector
Unit No. 01 Sutter County, Feather River	Right	6.25	11/16/2015 11/16/2015	Keith Millard

LM Start	1.33	Rating **	M	Issue No.	32 (cont)	
LM End	1.33	Issue Type +	En	Location *	LS	
Category	Supplemental			GPS Latitude/Longitude		
				Start	End	
Item	DWR UCIP Field Study			39.187995 °	39.187995 °	
				-121.620706 °	-121.620706 °	
DWR ID						
Action/Comments						
Inspector Comments: FS_ID:9601						
DS_ID:17785						
EP_NO: N/A						
FS_HLM: 1.324						
Repair Type: Non-Urgent						
Crossing Status: Indicator Found						
UCIP Comments: Unable to determine type of abandonment.						
FIELD_STRUCT_DESC: *Abandoned* 10-inch steel pipe through the						
levee, 2.8 feet below the crown. Waterward end open. Steel plate						
welded on landward end. Pump and standpipe at the landward toe.						
Permit No. 1407, 1949.						
FS Date: 03/01/2013						

Photo 2 of 2 : UCIP_FA_2015_0478.jpg



Abandoned Pump platform on LS toe.

LM Start	1.88	Rating **	M	Issue No.	33
LM End	1.88	Issue Type +	En	Location *	LS
Category	Supplemental			GPS Latitude/Longitude	
				Start	End
Item	DWR UCIP Field Study			39.195241 °	39.195241 °
				-121.624165 °	-121.624165 °
DWR ID					
Action/Comments					
Inspector Comments: FS_ID:41063 DS_ID:17784 EP_NO: 1119 FS_HLM: 1.87 Repair Type: Non-Urgent Crossing Status: Found UCIP Comments: Pipe needs to be repaired or properly abandoned. FIELD_STRUCT_DESC: 16-inch steel pipe through levee, 3.0 feet below crown. Pump in pump house on channel bank. Gate valve on the waterward end. Concrete standpipe and distribution box at the landward toe. (Permit No. 1119, 06/08/1946) FS Date: 03/01/2013					

Photo 1 of 3 : UCIP_FA_2015_0479.jpg



Corroded and damaged pipe at connection to concrete riser on LS toe.

* Location LS : Land Side N/A : Not Applicable WS : Water Side CR : Crown		** Rating A : Acceptable M : Minimally Acceptable U : Unacceptable		+ Issue Type Ma : Maintenance Deficiency Ob : Design & System Obsolescence En : Enforcement	
		N : Not Inspected/Rated C : Corrected A/W : Acceptable but Monitor & Maintain			

**Flood Control Project Maintenance
Levee Inspections**

Levee Inspection Report By Mile - Fall 2015

Levee District No. 0009 (Sutter County)

Waterway	Bank	Unit Miles	Inspection Start/End	Inspector
Unit No. 01 Sutter County, Feather River	Right	6.25	11/16/2015 11/16/2015	Keith Millard

LM Start	1.88	Rating **	M	Issue No.	33 (cont)
LM End	1.88	Issue Type +	En	Location *	LS
Category	Supplemental			GPS Latitude/Longitude	
				Start	End
Item	DWR UCIP Field Study			39.195241 °	39.195241 °
				-121.624165 °	-121.624165 °
DWR ID					

Action/Comments					
Inspector Comments: FS_ID:41063 DS_ID:17784 EP_NO: 1119 FS_HLM: 1.87 Repair Type: Non-Urgent Crossing Status: Found UCIP Comments: Pipe needs to be repaired or properly abandoned. FIELD_STRUCT_DESC: 16-inch steel pipe through levee, 3.0 feet below crown. Pump in pump house on channel bank. Gate valve on the waterward end. Concrete standpipe and distribution box at the landward toe. (Permit No. 1119, 06/08/1946) FS Date: 03/01/2013					

LM Start	1.88	Rating **	M	Issue No.	33 (cont)
LM End	1.88	Issue Type +	En	Location *	LS

Photo 2 of 3 : UCIP_FA_2015_0480.jpg



Concrete and CMP riser on LS toe.

Photo 3 of 3 : UCIP_FA_2015_0481.jpg



Pipe on WS toe.

* Location	** Rating	+ Issue Type
LS : Land Side WS : Water Side CR : Crown	A : Acceptable M : Minimally Acceptable U : Unacceptable	Ma : Maintenance Deficiency Ob : Design & System Obsolescence En : Enforcement
N/A : Not Applicable	N : Not Inspected/Rated C : Corrected A/W : Acceptable but Monitor & Maintain	

**Flood Control Project Maintenance
Levee Inspections**

Levee Inspection Report By Mile - Fall 2015

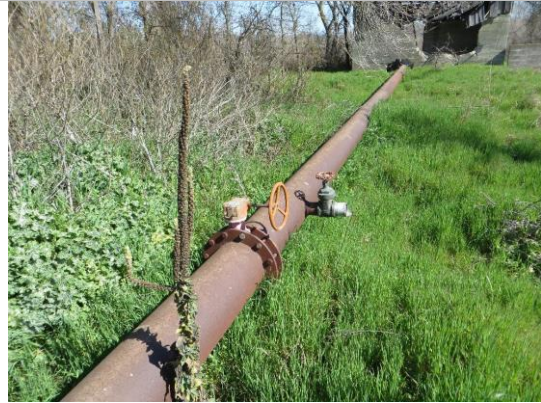
Levee District No. 0009 (Sutter County)

Waterway	Bank	Unit Miles	Inspection Start/End	Inspector
Unit No. 01 Sutter County, Feather River	Right	6.25	11/16/2015 11/16/2015	Keith Millard

LM Start	2.56	Rating **	U	Issue No.	34
LM End	2.56	Issue Type +	En	Location *	LS
Category	Supplemental			GPS Latitude/Longitude	
				Start	End
Item	DWR UCIP Field Study			39.203936 °	39.203936 °
				-121.629521 °	-121.629521 °
DWR ID					
Action/Comments					
Inspector Comments: FS_ID:9604 DS_ID:17783 EP_NO: N/A FS_HLM: 2.554 Repair Type: Urgent Crossing Status: Found					

LM Start	2.56	Rating **	U	Issue No.	34 (cont)
LM End	2.56	Issue Type +	En	Location *	LS

Photo 1 of 3 : UCIP_FA_2015_0482.jpg



Pipe on WS toe at butterfly valve.

Photo 2 of 3 : UCIP_FA_2015_0483.jpg



Pipe and pumphouse on WS toe/bench.

* Location LS : Land Side N/A : Not Applicable WS : Water Side CR : Crown		** Rating A : Acceptable M : Minimally Acceptable U : Unacceptable N : Not Inspected/Rated C : Corrected A/W : Acceptable but Monitor & Maintain		+ Issue Type Ma : Maintenance Deficiency Ob : Design & System Obsolescence En : Enforcement	
--	--	---	--	---	--

**Flood Control Project Maintenance
Levee Inspections**

Levee Inspection Report By Mile - Fall 2015

Levee District No. 0009 (Sutter County)

Waterway	Bank	Unit Miles	Inspection Start/End	Inspector
Unit No. 01 Sutter County, Feather River	Right	6.25	11/16/2015 11/16/2015	Keith Millard

LM Start	2.56	Rating **	U	Issue No.	34 (cont)
LM End	2.56	Issue Type +	En	Location *	LS
Category	Supplemental			GPS Latitude/Longitude	
				Start	End
Item	DWR UCIP Field Study			39.203936 °	39.203936 °
				-121.629521 °	-121.629521 °
DWR ID					
Action/Comments					
Inspector Comments: FS_ID:9604 DS_ID:17783 EP_NO: N/A FS_HLM: 2.554 Repair Type: Urgent Crossing Status: Found					

Photo 3 of 3 : UCIP_FA_2015_0484.jpg



CMP riser on LS toe.

LM Start	2.96	Rating **	M	Issue No.	2
LM End	3.12	Issue Type +	En	Location *	LS
Category	Earthen Levee			GPS Latitude/Longitude	
				Start	End
Item	Encroachments			39.209192 °	39.211152 °
				-121.629312 °	-121.628738 °
DWR ID	DWR_LD0009_01_s_2012_2				
Action/Comments					
Ditch					

No Photos

LM Start	3.05	Rating **	M	Issue No.	7
LM End	3.06	Issue Type +	En	Location *	LS
Category	Earthen Levee			GPS Latitude/Longitude	
				Start	End
Item	Encroachments			39.211052 °	39.211228 °
				-121.628851 °	-121.628808 °
DWR ID	DWR_LD0009_01_s_2012_7				
Action/Comments					
Fence					

Photo 1 of 1 : FA_2015_LD0009_202_7_20151106_00001.jpg



L/S fence along levee toe.

* Location LS : Land Side N/A : Not Applicable WS : Water Side CR : Crown		** Rating A : Acceptable N : Not Inspected/Rated M : Minimally Acceptable C : Corrected U : Unacceptable A/W : Acceptable but Monitor & Maintain		+ Issue Type Ma : Maintenance Deficiency Ob : Design & System Obsolescence En : Enforcement
--	--	---	--	---

**Flood Control Project Maintenance
Levee Inspections**

Levee Inspection Report By Mile - Fall 2015

Levee District No. 0009 (Sutter County)

Waterway	Bank	Unit Miles	Inspection Start/End	Inspector
Unit No. 01 Sutter County, Feather River	Right	6.25	11/16/2015 11/16/2015	Keith Millard

LM Start	3.10	Rating **	C	Issue No.	22
LM End	3.30	Issue Type +	Ma	Location *	WS
Category	Earthen Levee			GPS Latitude/Longitude	
				Start	End
Item	Animal Control				°
					°
DWR ID	DWR_LD0009_01_f_2013_22				
Action/Comments					
No rodents visible, but rodent burrows visible; need to backfill and compact or grout burrows. Inspector Comments: Large burrows on waterward levee slope. Will be repaired when the slurry wall is installed summer 2014.					

No Photos

LM Start	3.49	Rating **	U	Issue No.	35
LM End	3.49	Issue Type +	En	Location *	WS
Category	Supplemental			GPS Latitude/Longitude	
				Start	End
Item	DWR UCIP Field Study			39.217363 °	39.217363 °
				-121.628434 °	-121.628434 °
DWR ID					
Action/Comments					
Inspector Comments: FS_ID:41223 DS_ID:17782 EP_NO: 13657 FS_HLM: 3.488 Repair Type: Urgent Crossing Status: Found UCIP Comments: Needs flapgate on WS outlet. Pump is missing. FIELD_STRUCT_DESC: 20-inch pipe through levee, 2 feet below levee crown. Siphon breaker on waterward shoulder. Pump with trash rack at landward toe. (Permit No. 13657 - Micheli) FS Date: 10/15/2014					

Photo 1 of 3 : UCIP_FA_2015_0485.jpg



Trash rack on LS toe.

* Location LS : Land Side N/A : Not Applicable WS : Water Side CR : Crown		** Rating A : Acceptable M : Minimally Acceptable U : Unacceptable N : Not Inspected/Rated C : Corrected A/W : Acceptable but Monitor & Maintain		+ Issue Type Ma : Maintenance Deficiency Ob : Design & System Obsolescence En : Enforcement	
--	--	---	--	---	--

**Flood Control Project Maintenance
Levee Inspections**

Levee Inspection Report By Mile - Fall 2015

Levee District No. 0009 (Sutter County)

Waterway	Bank	Unit Miles	Inspection Start/End	Inspector
Unit No. 01 Sutter County, Feather River	Right	6.25	11/16/2015 11/16/2015	Keith Millard

LM Start	3.49	Rating **	U	Issue No.	35 (cont)	
LM End	3.49	Issue Type +	En	Location *	WS	
Category	Supplemental			GPS Latitude/Longitude		
				Start	End	
Item	DWR UCIP Field Study			39.217363 °	39.217363 °	
				-121.628434 °	-121.628434 °	
DWR ID						
Action/Comments						
Inspector Comments: FS_ID:41223						
DS_ID:17782						
EP_NO: 13657						
FS_HLM: 3.488						
Repair Type: Urgent						
Crossing Status: Found						
UCIP Comments: Needs flapgate on WS outlet. Pump is missing.						
FIELD_STRUCT_DESC: 20-inch pipe through levee, 2 feet below levee crown. Siphon breaker on waterward shoulder. Pump with trash rack at landward toe. (Permit No. 13657 - Micheli)						
FS Date: 10/15/2014						

LM Start	3.49	Rating **	U	Issue No.	35 (cont)
LM End	3.49	Issue Type +	En	Location *	WS

Photo 2 of 3 : UCIP_FA_2015_0486.jpg



Siphon Breakers on WS shoulder.

Photo 3 of 3 : UCIP_FA_2015_0496.jpg



LS at trash rack and pumping plant.

* Location LS : Land Side N/A : Not Applicable WS : Water Side CR : Crown		** Rating A : Acceptable N : Not Inspected/Rated M : Minimally Acceptable C : Corrected U : Unacceptable A/W : Acceptable but Monitor & Maintain		+ Issue Type Ma : Maintenance Deficiency Ob : Design & System Obsolescence En : Enforcement	
---	--	--	--	--	--

**Flood Control Project Maintenance
Levee Inspections**

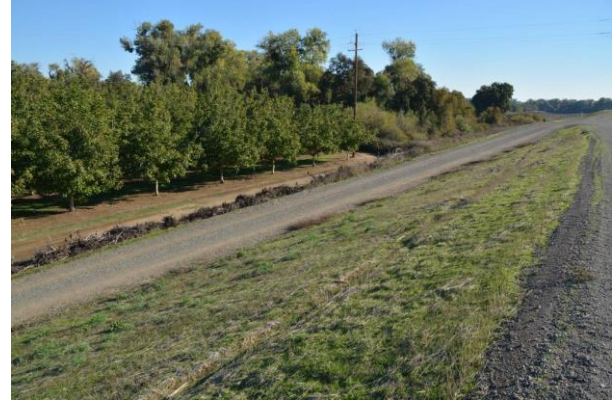
Levee Inspection Report By Mile - Fall 2015

Levee District No. 0009 (Sutter County)

Waterway	Bank	Unit Miles	Inspection Start/End	Inspector
Unit No. 01 Sutter County, Feather River	Right	6.25	11/16/2015 11/16/2015	Keith Millard

LM Start	4.15	Rating **	M	Issue No.	18
LM End	4.15	Issue Type +	En	Location *	WS
Category	Earthen Levee			GPS Latitude/Longitude	
				Start	End
Item	Vegetation			39.226748 °	39.226748 °
				-121.629460 °	-121.629460 °
DWR ID	DWR_LD0009_01_f_2015_18				
Action/Comments					
Landscaping					
Inspector Comments: Pruning debris stacked along waterside toe/ access ramp.					

Photo 1 of 1 : FA_2015_LD0009_202_18_20151117_00015.jpg



LM Start	4.33	Rating **	C	Issue No.	15
LM End	4.33	Issue Type +	En	Location *	LS
Category	Earthen Levee			GPS Latitude/Longitude	
				Start	End
Item	Encroachments			39.229507 °	39.229507 °
				-121.629780 °	-121.629780 °
DWR ID	DWR_LD0009_01_f_2013_15				
Action/Comments					
Agricultural tilling					

No Photos

LM Start	4.69	Rating **	C	Issue No.	10
LM End	4.69	Issue Type +	Ma	Location *	WS
Category	Earthen Levee			GPS Latitude/Longitude	
				Start	End
Item	Animal Control			39.234343 °	39.234343 °
				-121.632200 °	-121.632200 °
DWR ID	DWR_LD0009_01_f_2013_10				
Action/Comments					
No rodents visible, but rodent burrows visible; need to backfill and compact or grout burrows.					

No Photos

* Location LS : Land Side N/A : Not Applicable WS : Water Side CR : Crown		** Rating A : Acceptable N : Not Inspected/Rated M : Minimally Acceptable C : Corrected U : Unacceptable A/W : Acceptable but Monitor & Maintain		+ Issue Type Ma : Maintenance Deficiency Ob : Design & System Obsolescence En : Enforcement
--	--	---	--	---

**Flood Control Project Maintenance
Levee Inspections**

Levee Inspection Report By Mile - Fall 2015

Levee District No. 0009 (Sutter County)

Waterway	Bank	Unit Miles	Inspection Start/End	Inspector
Unit No. 01 Sutter County, Feather River	Right	6.25	11/16/2015 11/16/2015	Keith Millard

LM Start	5.32	Rating **	U	Issue No.	19
LM End	5.32	Issue Type +	Ma	Location *	WS
Category	Earthen Levee			GPS Latitude/Longitude	
				Start	End
Item	Animal Control			39.242582 °	39.242582 °
				-121.637032 °	-121.637032 °
DWR ID	DWR_LD0009_01_f_2015_19				
Action/Comments					
No rodents visible, but rodent burrows visible; need to backfill and compact or grout burrows.					

Photo 1 of 1 : FA_2015_LD0009_202_19_20151117_00016.jpg



LM Start	5.66	Rating **	M	Issue No.	20
LM End	5.66	Issue Type +	En	Location *	WS
Category	Earthen Levee			GPS Latitude/Longitude	
				Start	End
Item	Encroachments			39.247288 °	39.247288 °
				-121.637353 °	-121.637353 °
DWR ID	DWR_LD0009_01_f_2015_20				
Action/Comments					
Prunings					
Inspector Comments: Prunning debris stacked at toe of waterside levee.					

Photo 1 of 1 : FA_2015_LD0009_202_20_20151117_00017.jpg



LM Start	5.68	Rating **	U	Issue No.	11
LM End	5.68	Issue Type +	En	Location *	WS
Category	Earthen Levee			GPS Latitude/Longitude	
				Start	End
Item	Encroachments			39.247697 °	39.247697 °
				-121.637312 °	-121.637312 °
DWR ID	DWR_LD0009_01_s_2012_11				
Action/Comments					
Building					

Photo 1 of 1 : FA_2015_LD0009_202_11_20151106_00003.jpg



Building at the waterside toe.

* Location LS : Land Side N/A : Not Applicable WS : Water Side CR : Crown		** Rating A : Acceptable M : Minimally Acceptable U : Unacceptable N : Not Inspected/Rated C : Corrected A/W : Acceptable but Monitor & Maintain		+ Issue Type Ma : Maintenance Deficiency Ob : Design & System Obsolescence En : Enforcement	
---	--	--	--	--	--

**Flood Control Project Maintenance
Levee Inspections**

Levee Inspection Report By Mile - Fall 2015

Levee District No. 0009 (Sutter County)

Waterway	Bank	Unit Miles	Inspection Start/End	Inspector
Unit No. 01 Sutter County, Feather River	Right	6.25	11/16/2015 11/16/2015	Keith Millard

LM Start	5.71	Rating **	N	Issue No.	21
LM End	5.71	Issue Type +	Ma	Location *	WS
Category	Earthen Levee			GPS Latitude/Longitude	
				Start	End
Item	Trim / Thin Trees			39.248009 °	39.248009
				-121.637306 °	-121.637306
DWR ID	DWR_LD0009_01_f_2015_21				
Action/Comments					
Tree stumps.					
Inspector Comments: Tree stump					

Photo 1 of 1 : FA_2015_LD0009_202_21_20151117_00018.jpg



LM Start	5.76	Rating **	C	Issue No.	24
LM End	5.76	Issue Type +	Ma	Location *	WS
Category	Earthen Levee			GPS Latitude/Longitude	
				Start	End
Item	Animal Control			39.248868 °	39.248868 °
				-121.637232 °	-121.637232 °
DWR ID	DWR_LD0009_01_f_2013_24				
Action/Comments					
No rodents visible, but rodent burrows visible; need to backfill and compact or grout burrows.					

No Photos

LM Start	6.14	Rating **	C	Issue No.	25
LM End	6.14	Issue Type +	Ma	Location *	LS
Category	Earthen Levee			GPS Latitude/Longitude	
				Start	End
Item	Animal Control			39.254369 °	39.254369 °
				-121.636531 °	-121.636531 °
DWR ID	DWR_LD0009_01_f_2013_25				
Action/Comments					
No rodents visible, but rodent burrows visible; need to backfill and compact or grout burrows.					

No Photos

* Location LS : Land Side N/A : Not Applicable WS : Water Side CR : Crown		** Rating A : Acceptable N : Not Inspected/Rated M : Minimally Acceptable C : Corrected U : Unacceptable A/W : Acceptable but Monitor & Maintain		+ Issue Type Ma : Maintenance Deficiency Ob : Design & System Obsolescence En : Enforcement
--	--	---	--	---