

**Flood Control Project Maintenance
Levee Inspections**

Fall 2017 Levee Maintenance Deficiency Summary Report

Overall LMA & Unit Ratings, including USACE Erosion Survey

Sacramento River Basin

LD0003	Overall LMA Rating	Total LMA Miles						
Levee District No. 0003 (Glenn County)	U	11.97						
Rated Item	Maintenance Deficiency				Enforcement		Design & System Obsolescence	
	M Miles	U Miles	M + 4U Miles	Threshold %	M Miles	U Miles	M Miles	U Miles
<i>Earthen Levee</i>								
Vegetation						0.03		
Trim / Thin Trees	0.36	0.01	0.40	3.34%				
Encroachments	0.15		0.15	1.25%	0.86	0.07		
Animal Control	0.42	1.26	5.46	45.61%				
Slope Stability	0.08	0.01	0.12	1.00%				
Erosion / Bank Caving		0.01	0.04	0.33%				
<i>Supplemental</i>								
2015 USACE Erosion Survey, DRAFT	0.30		0.30	2.51%				
DWR UCIP Field Study					0.15			
<i>LMA Totals:</i>	1.31	1.29	6.47	54.05%	1.01	0.10	0.00	0.00

Unit No. 01 Glenn County Sacramento River LB	Overall Unit Rating	Total Unit Miles						
LD0003	U	11.97						
Rated Item	Maintenance Deficiency				Enforcement		Design & System Obsolescence	
	M Miles	U Miles	M + 4U Miles	Threshold %	M Miles	U Miles	M Miles	U Miles
<i>Earthen Levee</i>								
Vegetation						0.03		
Trim / Thin Trees	0.36	0.01	0.40	3.34%				
Encroachments	0.15		0.15	1.25%	0.86	0.07		
Animal Control	0.42	1.26	5.46	45.61%				
Slope Stability	0.08	0.01	0.12	1.00%				
Erosion / Bank Caving		0.01	0.04	0.33%				
<i>Supplemental</i>								
2015 USACE Erosion Survey, DRAFT	0.30		0.30	2.51%				
DWR UCIP Field Study					0.15			
<i>Unit Totals:</i>	1.31	1.29	6.47	54.05%	1.01	0.10	0.00	0.00

**Flood Control Project Maintenance
Levee Inspections****LMA District Cover Sheet
Fall 2017 Levee Inspection Results****Levee District No. 0003 (Glenn County)**

	Spring (March - May)	Summer ** (June - August)	Fall (September - November)	Winter ** (December - February)
† Overall LMA Rating (Fall Only)			U	

** Non-receipt of Summer or Winter Inspection
Reports may effect overall annual rating.

† **SPRING INSPECTIONS:** Overall maintenance ratings are not determined for the spring inspection results. Individual maintenance deficiencies are rated using the same criteria in the spring and in the fall.

FALL INSPECTIONS: The overall maintenance rating shown above is based on operation and maintenance deficiencies identified within the attached unit inspection reports. This rating is not intended to be an indication of risk.

Comments

**Flood Control Project Maintenance
Levee Inspections**

Unit Cover Sheet

Fall 2017 Levee Inspection Results

Levee District No. 0003 (Glenn County)

Waterway			Bank	Unit Miles
Unit No. 01 Glenn County Sacramento River			Left	11.97
	Spring (March - May)	Summer (June - August)	(September - November) Fall	Winter (December - February)
Unit Maintenance Rating (Fall Only)			U	
Date of Inspection	3/30/2017 - 3/30/2017		10/26/2017 - 10/26/2017	
DWR Inspector	Bob Duffey		Bob Duffey	
Accompanied By	Todd Southam		Todd Southam	

Summer & Winter Inspections

The Local Maintaining Agency (LMA) is responsible for summer and winter inspections. The LMA is required to submit a report regarding summer and winter inspections to the California Department of Water Resources (DWR).

DWR must be informed on the:

- a) completion of the inspection
- b) any changes other than the results of normal maintenance
- c) corrections to deficiencies noted in this report

If additional items are noted, further documentation of those items must also be submitted.

The LMA should submit this information to DWR using the LMA web application tool available at:

<http://cdec.water.ca.gov/lma.html>

If the LMA is unable to submit information on this webpage, please contact DWR for assistance.

The LMA should submit the information and any associated documentation by September 30 for summer inspections and March 31 for winter inspections.

**Flood Control Project Maintenance
Levee Inspections**

Levee Inspection Report By Mile - Fall 2017

Levee District No. 0003 (Glenn County)

Waterway	Bank	Unit Miles	Inspection Start/End	Inspector
Unit No. 01 Glenn County Sacramento River	Left	11.97	10/26/2017 10/26/2017	Bob Duffey

LM Start		Rating **	A	Issue No.	16
LM End		Issue Type +	Ma	Location *	
Category	Earthen Levee		GPS Latitude/Longitude		
			Start	End	
Item	Operations & Maintenance Manuals			°	°
				°	°
DWR ID	DWR_LD0003_01_s _ 2013_16				
Comment Code					
Inspector Comment					
The LMA has the O&M manuals.					

No Photos

LM Start		Rating **	A	Issue No.	17
LM End		Issue Type +	Ma	Location *	
Category	Earthen Levee		GPS Latitude/Longitude		
			Start	End	
Item	Emergency Supplies & Equipment			°	°
				°	°
DWR ID	DWR_LD0003_01_s _ 2013_17				
Comment Code					
Inspector Comment					
The LMA has adequate flood fight supplies and equipment.					

No Photos

LM Start		Rating **	A	Issue No.	18
LM End		Issue Type +	Ma	Location *	
Category	Earthen Levee		GPS Latitude/Longitude		
			Start	End	
Item	Flood Preparedness & Training			°	°
				°	°
DWR ID	DWR_LD0003_01_s _ 2013_18				
Comment Code					
Inspector Comment					
The LMA has completed flood fight training in the past.					

No Photos

* Location LS : Land Side N/A : Not Applicable WS : Water Side CR : Crown	** Rating A : Acceptable M : Minimally Acceptable U : Unacceptable	N : Not Inspected/Rated C : Corrected A/W : Acceptable but Monitor & Maintain	+ Issue Type Ma : Maintenance Deficiency Ob : Design & System Obsolescence En : Enforcement
--	--	---	---

**Flood Control Project Maintenance
Levee Inspections**

Levee Inspection Report By Mile - Fall 2017

Levee District No. 0003 (Glenn County)

Waterway	Bank	Unit Miles	Inspection Start/End	Inspector
Unit No. 01 Glenn County Sacramento River	Left	11.97	10/26/2017 10/26/2017	Bob Duffey

LM Start		Rating **	A/W	Issue No.	56
LM End		Issue Type +	Ma	Location *	
Category	Supplemental		GPS Latitude/Longitude		
			Start	End	
Item	2017 Storm Damage		39.504388 °	39.508117 °	
			-121.985301 °	-121.986562 °	
DWR ID	DWR_LD0003_01_f_2017_56				
Comment Code					
Inspector Comment					
Levee Evaluation Comments Description: Site ID No:17 Site Designation:DWR_LD0003_01_s_2012_52 Repair Type: Erosion Rating:Serious Field Date:6/7/2017 Notes: Highly vegetated levee slope. About 30' drop erosion scarp. From levee crest, erosion exists about 150' out towards the river.					

No Photos

LM Start	0.27	Rating **	M	Issue No.	105
LM End	0.27	Issue Type +	Ma	Location *	LS
Category	Earthen Levee		GPS Latitude/Longitude		
			Start	End	
Item	Animal Control		39.387413 °	39.387413 °	
			-121.991086 °	-121.991086 °	
DWR ID	DWR_LD0003_01_f_2016_105				
Comment Code					
A3 : No rodents visible, but rodent burrows visible; need to backfill and compact or grout burrows.					
Inspector Comment					

Photo 1 of 1 : FA_2017_LD0003_27_105_20170911_00067.jpg



View of the rodent holes along the landside slope.

* Location LS : Land Side N/A : Not Applicable WS : Water Side CR : Crown	** Rating A : Acceptable M : Minimally Acceptable U : Unacceptable	N : Not Inspected/Rated C : Corrected A/W : Acceptable but Monitor & Maintain	+ Issue Type Ma : Maintenance Deficiency Ob : Design & System Obsolescence En : Enforcement
--	--	---	---

**Flood Control Project Maintenance
Levee Inspections**

Levee Inspection Report By Mile - Fall 2017

Levee District No. 0003 (Glenn County)

Waterway	Bank	Unit Miles	Inspection Start/End	Inspector
Unit No. 01 Glenn County Sacramento River	Left	11.97	10/26/2017 10/26/2017	Bob Duffey

LM Start	0.56	Rating **	M	Issue No.	23
LM End	0.63	Issue Type +	Ma	Location *	LS
Category	Earthen Levee			GPS Latitude/Longitude	
				Start	End
Item	Animal Control			39.389390 °	39.389219 °
				-121.995539 °	-121.996854 °
DWR ID	DWR_LD0003_01_s _ 2012_23				
Comment Code					
A3 : No rodents visible, but rodent burrows visible; need to backfill and compact or grout burrows.					
Inspector Comment					

No Photos

LM Start	0.69	Rating **	M	Issue No.	55
LM End	0.69	Issue Type +	Ma	Location *	WS
Category	Earthen Levee			GPS Latitude/Longitude	
				Start	End
Item	Animal Control			39.388716 °	39.388716 °
				-121.997774 °	-121.997774 °
DWR ID	DWR_LD0003_01_s _ 2014_55				
Comment Code					
A1 : Exterminate rodents and backfill and compact or grout burrows.					
Inspector Comment					

Photo 1 of 1 : FA_2017_LD0003_27_55_20170911_00037.jpg



View of the rodent activity along the waterside slope.

LM Start	0.71	Rating **	U	Issue No.	3
LM End	0.77	Issue Type +	Ma	Location *	LS
Category	Earthen Levee			GPS Latitude/Longitude	
				Start	End
Item	Animal Control			39.388578 °	39.388410 °
				-121.997987 °	-121.998992 °
DWR ID	DWR_LD0003_01_s _ 2012_3				
Comment Code					
A3 : No rodents visible, but rodent burrows visible; need to backfill and compact or grout burrows.					
Inspector Comment					

Photo 1 of 1 : FA_2017_LD0003_27_3_20170911_00001.jpg



View of squirrel holes along the landside slope.

* Location LS : Land Side N/A : Not Applicable WS : Water Side CR : Crown		** Rating A : Acceptable M : Minimally Acceptable U : Unacceptable		+ Issue Type Ma : Maintenance Deficiency Ob : Design & System Obsolescence En : Enforcement	
		N : Not Inspected/Rated C : Corrected A/W : Acceptable but Monitor & Maintain			

**Flood Control Project Maintenance
Levee Inspections**

Levee Inspection Report By Mile - Fall 2017

Levee District No. 0003 (Glenn County)

Waterway	Bank	Unit Miles	Inspection Start/End	Inspector
Unit No. 01 Glenn County Sacramento River	Left	11.97	10/26/2017 10/26/2017	Bob Duffey

LM Start	0.81	Rating **	U	Issue No.	51
LM End	0.91	Issue Type +	Ma	Location *	LS
Category	Earthen Levee			GPS Latitude/Longitude	
				Start	End
Item	Animal Control			39.388690 °	39.389867 °
				-121.999820 °	-122.000585 °
DWR ID	DWR_LD0003_01_f_2015_51				
Comment Code					
A3 : No rodents visible, but rodent burrows visible; need to backfill and compact or grout burrows.					
Inspector Comment					

Photo 1 of 1 : FA_2017_LD0003_27_51_20170911_00034.jpg



View of the rodent holes along the landside slope.

LM Start	1.21	Rating **	M	Issue No.	52
LM End	1.21	Issue Type +	Ma	Location *	LS
Category	Earthen Levee			GPS Latitude/Longitude	
				Start	End
Item	Animal Control			39.394010 °	39.394010 °
				-122.000977 °	-122.000977 °
DWR ID	DWR_LD0003_01_f_2015_52				
Comment Code					
A3 : No rodents visible, but rodent burrows visible; need to backfill and compact or grout burrows.					
Inspector Comment					

Photo 1 of 1 : FA_2017_LD0003_27_52_20170911_00035.jpg



View of the rodent holes along the landside slope.

LM Start	1.35	Rating **	M	Issue No.	41
LM End	1.35	Issue Type +	En	Location *	WS
Category	Earthen Levee			GPS Latitude/Longitude	
				Start	End
Item	Encroachments			39.395975 °	39.395975 °
				-122.001492 °	-122.001492 °
DWR ID	DWR_LD0003_01_s_2017_41				
Comment Code					
TR : Tree or limb					
Inspector Comment					
Remove the tree from the waterside slope and toe.					

Photo 1 of 1 : FA_2017_LD0003_27_41_20170911_00021.jpg



View of the tree on the waterside slope and toe.

* Location LS : Land Side N/A : Not Applicable WS : Water Side CR : Crown		** Rating A : Acceptable M : Minimally Acceptable U : Unacceptable		+ Issue Type Ma : Maintenance Deficiency Ob : Design & System Obsolescence En : Enforcement	
		N : Not Inspected/Rated C : Corrected A/W : Acceptable but Monitor & Maintain			

**Flood Control Project Maintenance
Levee Inspections**

Levee Inspection Report By Mile - Fall 2017

Levee District No. 0003 (Glenn County)

Waterway	Bank	Unit Miles	Inspection Start/End	Inspector
Unit No. 01 Glenn County Sacramento River	Left	11.97	10/26/2017 10/26/2017	Bob Duffey

LM Start	1.35	Rating **	A/W	Issue No.	8
LM End	1.62	Issue Type +	Ma	Location *	WS
Category	Supplemental			GPS Latitude/Longitude	
				Start	End
Item	2015 USACE Erosion Survey, DRAFT			39.395982 °	39.399959 °
				-122.002451 °	-122.003522 °
DWR ID	DWR_LD0003_01_s_2016_8				
Comment Code					
Inspector Comment					
2000 - Snags along toe at downstream end; slow erosion. 2001 - A couple of small fresh slumps in the lower bank section. 2006 - Some minor new erosion at the downstream end. 2009 - Some new erosion. 2010 - New toe erosion. 2011 - Minor new erosion. 2012 - Minor new erosion at the toe. 2013 - Site removed because sufficient berm width, does not meet criteria. 2015: [2015 Site ID: SAC_163-0_L]					

No Photos

LM Start	1.47	Rating **	M	Issue No.	106
LM End	1.47	Issue Type +	En	Location *	
Category	Supplemental			GPS Latitude/Longitude	
				Start	End
Item	DWR UCIP Field Study			39.397780 °	39.397780 °
				-122.002074 °	-122.002074 °
DWR ID					
Comment Code					
Inspector Comment					
FS_ID:14573					
DS_ID:18830					
EP_NO: 9930					
Repair Type: Non-Urgent					
Crossing Status: Found					
UCIP Comments: Steel plate welded over WS end of pipe. Slide gate at WS toe missing. Appears abandoned.					
FIELD_STRUCT_DESC: 24-inch corrugated metal irrigation pipe through the levee, 14.5 feet below the crown. Slide gate on waterside (WS) end. 7-foot by 9-foot concrete diversion box at landward toe (Automatic Board Order (ABO) issued as Permit No. 9930, 1974 - Steel Ranch). [Additional Reference(s): DWR Levee Log, 1992. USACE Sacramento O&M Manual 136, March 1960 (HLM 21.89)].					
FS Date: 6/4/2013					

Photo 1 of 3 : UCIP_FA_2017_14573_24038.jpg



24-inch CMP stormdrain on WS toe.

* Location LS : Land Side N/A : Not Applicable WS : Water Side CR : Crown		** Rating A : Acceptable M : Minimally Acceptable U : Unacceptable N : Not Inspected/Rated C : Corrected A/W : Acceptable but Monitor & Maintain		+ Issue Type Ma : Maintenance Deficiency Ob : Design & System Obsolescence En : Enforcement	
---	--	--	--	--	--

**Flood Control Project Maintenance
Levee Inspections**

Levee Inspection Report By Mile - Fall 2017

Levee District No. 0003 (Glenn County)

Waterway	Bank	Unit Miles	Inspection Start/End	Inspector
Unit No. 01 Glenn County Sacramento River	Left	11.97	10/26/2017 10/26/2017	Bob Duffey

LM Start	1.47	Rating **	M	Issue No.	106 (cont)	
LM End	1.47	Issue Type +	En	Location *		
Category	Supplemental			GPS Latitude/Longitude		
				Start		End
Item	DWR UCIP Field Study			39.397780 °	39.397780 °	
				-122.002074 °	-122.002074 °	
DWR ID						
Comment Code						
Inspector Comment						
FS_ID:14573 DS_ID:18830 EP_NO: 9930 Repair Type: Non-Urgent Crossing Status: Found UCIP Comments: Steel plate welded over WS end of pipe. Slide gate at WS toe missing. Appears abandoned. FIELD_STRUCT_DESC: 24-inch corrugated metal irrigation pipe through the levee, 14.5 feet below the crown. Slide gate on waterside (WS) end. 7-foot by 9-foot concrete diversion box at landward toe (Automatic Board Order (ABO) issued as Permit No. 9930, 1974 - Steel Ranch). [Additional Reference(s): DWR Levee Log, 1992. USACE Sacramento O&M Manual 136, March 1960 (HLM 21.89)]. FS Date: 6/4/2013						

Photo 2 of 3 : UCIP_FA_2017_14573_24037.jpg



Steel plate welded over end of pipe on WS toe.

LM Start	1.47	Rating **	M	Issue No.	106 (cont)
LM End	1.47	Issue Type +	En	Location *	

Photo 3 of 3 : UCIP_FA_2017_14573_24036.jpg



Distribution box on LS toe.

* Location LS : Land Side N/A : Not Applicable WS : Water Side CR : Crown		** Rating A : Acceptable M : Minimally Acceptable U : Unacceptable N : Not Inspected/Rated C : Corrected A/W : Acceptable but Monitor & Maintain		+ Issue Type Ma : Maintenance Deficiency Ob : Design & System Obsolescence En : Enforcement
--	--	---	--	---

**Flood Control Project Maintenance
Levee Inspections**

Levee Inspection Report By Mile - Fall 2017

Levee District No. 0003 (Glenn County)

Waterway	Bank	Unit Miles	Inspection Start/End	Inspector
Unit No. 01 Glenn County Sacramento River	Left	11.97	10/26/2017 10/26/2017	Bob Duffey

LM Start	1.51	Rating **	M	Issue No.	73
LM End	1.51	Issue Type +	En	Location *	LS
Category	Earthen Levee			GPS Latitude/Longitude	
				Start	End
Item	Encroachments			39.398325 °	39.398325 °
				-122.002322 °	-122.002322 °
DWR ID	DWR_LD0003_01_f_2017_73				
Comment Code					
PR : Prunings					
Inspector Comment					
Remove the prunings from the landside toe.					

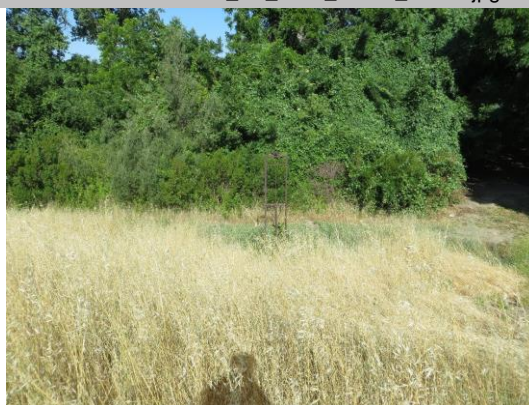
Photo 1 of 1 : FA_2017_LD0003_27_73_20171030_00112.jpg



View of the prunings along the landside toe.

LM Start	1.58	Rating **	M	Issue No.	107
LM End	1.58	Issue Type +	En	Location *	
Category	Supplemental			GPS Latitude/Longitude	
				Start	End
Item	DWR UCIP Field Study			39.399330 °	39.399330 °
				-122.002402 °	-122.002402 °
DWR ID					
Comment Code					
Inspector Comment					
FS_ID:14576 DS_ID:18823 EP_NO: 9931 Repair Type: Non-Urgent Crossing Status: Found UCIP Comments: Appears abandoned. Pipe buried at slide gate on WS toe. FIELD_STRUCT_DESC: 24-inch corrugated metal irrigation pipe through the levee, 15 feet below the crown. Slide gate on the waterside (WS) end. 6-foot by 7-foot concrete distribution box on the landside (LS) toe. (Automatic Board Order (ABO) issued as Permit No. 9931, 1974 - Lowell F. Steel). [Additional Reference(s): DWR Levee Log, 1992. USACE Sacramento O&M Manual 136, March 1960 (HLM 22.00)]. FS Date: 6/4/2013					

Photo 1 of 2 : UCIP_FA_2017_14576_24052.jpg



Slide gate at WS toe.

* Location LS : Land Side N/A : Not Applicable WS : Water Side CR : Crown		** Rating A : Acceptable M : Minimally Acceptable U : Unacceptable N : Not Inspected/Rated C : Corrected A/W : Acceptable but Monitor & Maintain		+ Issue Type Ma : Maintenance Deficiency Ob : Design & System Obsolescence En : Enforcement
--	--	---	--	---

**Flood Control Project Maintenance
Levee Inspections**

Levee Inspection Report By Mile - Fall 2017

Levee District No. 0003 (Glenn County)

Waterway	Bank	Unit Miles	Inspection Start/End	Inspector
Unit No. 01 Glenn County Sacramento River	Left	11.97	10/26/2017 10/26/2017	Bob Duffey

LM Start	1.58	Rating **	M	Issue No.	107 (cont)	
LM End	1.58	Issue Type +	En	Location *		
Category	Supplemental			GPS Latitude/Longitude		
				Start		End
Item	DWR UCIP Field Study			39.399330 °	39.399330 °	
				-122.002402 °	-122.002402 °	
DWR ID						
Comment Code						
Inspector Comment						
FS_ID:14576 DS_ID:18823 EP_NO: 9931 Repair Type: Non-Urgent Crossing Status: Found UCIP Comments: Appears abandoned. Pipe burried at slide gate on WS toe. FIELD_STRUCT_DESC: 24-inch corrugated metal irrigation pipe through the levee, 15 feet below the crown. Slide gate on the waterside (WS) end. 6-foot by 7-foot concrete distribution box on the landside (LS) toe. (Automatic Board Order (ABO) issued as Permit No. 9931, 1974 - Lowell F. Steel). [Additional Reference(s): DWR Levee Log, 1992. USACE Sacramento O&M Manual 136, March 1960 (HLM 22.00)]. FS Date: 6/4/2013						

Photo 2 of 2 : UCIP_FA_2017_14576_24051.jpg



Concrete distribution box at LS toe.

LM Start	1.75	Rating **	U	Issue No.	104
LM End	1.98	Issue Type +	Ma	Location *	LS
Category	Earthen Levee			GPS Latitude/Longitude	
				Start	End
Item	Animal Control			39.401795 °	39.405018 °
				-122.002084 °	-122.001672 °
DWR ID	DWR_LD0003_01_f_2016_104				
Comment Code					
A1 : Exterminate rodents and backfill and compact or grout burrows.					
Inspector Comment					

Photo 1 of 1 : FA_2017_LD0003_27_104_20170911_00066.jpg



View of the rodent holes along the landside slope.

* Location LS : Land Side N/A : Not Applicable WS : Water Side CR : Crown	** Rating A : Acceptable M : Minimally Acceptable U : Unacceptable	N : Not Inspected/Rated C : Corrected A/W : Acceptable but Monitor & Maintain	+ Issue Type Ma : Maintenance Deficiency Ob : Design & System Obsolescence En : Enforcement
--	--	---	---

**Flood Control Project Maintenance
Levee Inspections**

Levee Inspection Report By Mile - Fall 2017

Levee District No. 0003 (Glenn County)

Waterway	Bank	Unit Miles	Inspection Start/End	Inspector
Unit No. 01 Glenn County Sacramento River	Left	11.97	10/26/2017 10/26/2017	Bob Duffey

LM Start	1.87	Rating **	M	Issue No.	108 (cont)	
LM End	1.87	Issue Type +	En	Location *		
Category	Supplemental			GPS Latitude/Longitude		
				Start		End
Item	DWR UCIP Field Study			39.403419 °		39.403419 °
				-122.001871 °		-122.001871 °
DWR ID						
Comment Code						
Inspector Comment						
FS_ID:14577						
DS_ID:18825						
EP_NO: 9935						
Repair Type: Non-Urgent						
Crossing Status: Found						
UCIP Comments: Appears abandoned. Pipe burried on WS toe.						
Debris and steel plate blocking inlet on LS.						
FIELD_STRUCT_DESC: 24-inch corrugated metal irrigation pipe						
through the levee and beneath the roadway, 18 feet below the crown.						
Slide gate on the waterside (WS) end. (Automatic Board Order (ABO)						
issued as Permit No. 9935, 1974 - Florence Watt). [Additional						
Reference(s): DWR Levee Log, 1992. USACE Sacramento O&M						
Manual 136, March 1960 (HLM 22.30)].						
FS Date: 6/4/2013						

Photo 2 of 3 : UCIP_FA_2017_14577_24054.jpg



Concrete distribution box off LS toe.

LM Start	1.87	Rating **	M	Issue No.	108 (cont)
LM End	1.87	Issue Type +	En	Location *	

Photo 3 of 3 : UCIP_FA_2017_14577_24053.jpg



Debris and steel plate blocking inlet on LS toe.

* Location LS : Land Side N/A : Not Applicable WS : Water Side CR : Crown	** Rating A : Acceptable M : Minimally Acceptable U : Unacceptable	N : Not Inspected/Rated C : Corrected A/W : Acceptable but Monitor & Maintain	+ Issue Type Ma : Maintenance Deficiency Ob : Design & System Obsolescence En : Enforcement
--	--	---	---

**Flood Control Project Maintenance
Levee Inspections**

Levee Inspection Report By Mile - Fall 2017

Levee District No. 0003 (Glenn County)

Waterway	Bank	Unit Miles	Inspection Start/End	Inspector
Unit No. 01 Glenn County Sacramento River	Left	11.97	10/26/2017 10/26/2017	Bob Duffey

LM Start	2.03	Rating **	A	Issue No.	67
LM End	2.03	Issue Type +	Ma	Location *	LS
Category	Earthen Levee			GPS Latitude/Longitude	
				Start	End
Item	Vegetation			39.405792 °	39.405792 °
				-122.001617 °	-122.001617 °
DWR ID	DWR_LD0003_01_f_2017_67				
Comment Code					
V1 : Control annual grass and weeds on the levee slopes and easements.					
Inspector Comment					
The vegetation was removed from both slopes.					

Photo 1 of 1 : FA_2017_LD0003_27_67_20171030_00111.jpg



View of no vegetation on both slopes.

LM Start	2.10	Rating **	M	Issue No.	109	
LM End	2.10	Issue Type +	En	Location *		
Category	Supplemental			GPS Latitude/Longitude		
				Start	End	
Item	DWR UCIP Field Study			39.406353 °	39.406353 °	
				-122.000674 °	-122.000674 °	
DWR ID						
Comment Code						
Inspector Comment						
FS_ID:15144						
DS_ID:23151						
EP_NO: N/A						
Repair Type: Non-Urgent						
Crossing Status: Found						
UCIP Comments: No permit identified for this crossing.						
FIELD_STRUCT_DESC: 12-inch steel irrigation pipe through the levee, 3.5 feet below the crown. Pump, butterfly valve, and JP/meter at channel on landside (LS) toe. Siphon breaker inside a 12-inch steel riser unit on the LS shoulder. 3-inch plastic drain on the waterside (WS) toe.						
FS Date: 6/4/2013						

Photo 1 of 3 : UCIP_FA_2017_15144_24883.jpg



Siphon breaker in steel riser on LS shoulder with pump in background.

* Location LS : Land Side N/A : Not Applicable WS : Water Side CR : Crown		** Rating A : Acceptable M : Minimally Acceptable U : Unacceptable N : Not Inspected/Rated C : Corrected A/W : Acceptable but Monitor & Maintain		+ Issue Type Ma : Maintenance Deficiency Ob : Design & System Obsolescence En : Enforcement
--	--	---	--	---

**Flood Control Project Maintenance
Levee Inspections**

Levee Inspection Report By Mile - Fall 2017

Levee District No. 0003 (Glenn County)

Waterway	Bank	Unit Miles	Inspection Start/End	Inspector
Unit No. 01 Glenn County Sacramento River	Left	11.97	10/26/2017 10/26/2017	Bob Duffey

LM Start	2.10	Rating **	M	Issue No.	109 (cont)	
LM End	2.10	Issue Type +	En	Location *		
Category	Supplemental			GPS Latitude/Longitude		
				Start	End	
Item	DWR UCIP Field Study			39.406353 °	39.406353 °	
				-122.000674 °	-122.000674 °	
DWR ID						
Comment Code						
Inspector Comment						
FS_ID:15144 DS_ID:23151 EP_NO: N/A Repair Type: Non-Urgent Crossing Status: Found UCIP Comments: No permit identified for this crossing. FIELD_STRUCT_DESC: 12-inch steel irrigation pipe through the levee, 3.5 feet below the crown. Pump, butterfly valve, and JP/meter at channel on landside (LS) toe. Siphon breaker inside a 12-inch steel riser unit on the LS shoulder. 3-inch plastic drain on the waterside (WS) toe. FS Date: 6/4/2013						

LM Start	2.10	Rating **	M	Issue No.	109 (cont)
LM End	2.10	Issue Type +	En	Location *	

Photo 2 of 3 : UCIP_FA_2017_15144_24882.jpg



Pump and butterfly valve off LS toe.

Photo 3 of 3 : UCIP_FA_2017_15144_24881.jpg



3-inch drain on WS toe (purpose unclear).

* Location LS : Land Side N/A : Not Applicable WS : Water Side CR : Crown	** Rating A : Acceptable M : Minimally Acceptable U : Unacceptable N : Not Inspected/Rated C : Corrected A/W : Acceptable but Monitor & Maintain	+ Issue Type Ma : Maintenance Deficiency Ob : Design & System Obsolescence En : Enforcement
--	---	---

**Flood Control Project Maintenance
Levee Inspections**

Levee Inspection Report By Mile - Fall 2017

Levee District No. 0003 (Glenn County)

Waterway	Bank	Unit Miles	Inspection Start/End	Inspector
Unit No. 01 Glenn County Sacramento River	Left	11.97	10/26/2017 10/26/2017	Bob Duffey

LM Start	2.35	Rating **	M	Issue No.	13
LM End	2.52	Issue Type +	Ma	Location *	WS
Category	Earthen Levee			GPS Latitude/Longitude	
				Start	End
Item	Animal Control			39.406413 °	39.407248 °
				-121.995993 °	-121.993177 °
DWR ID	DWR_LD0003_01_s_2012_13				
Comment Code					
A3 : No rodents visible, but rodent burrows visible; need to backfill and compact or grout burrows.					
Inspector Comment					

Photo 1 of 1 : FA_2017_LD0003_27_13_20170911_00011.jpg



View of the rodent holes along the waterside slope.

LM Start	2.38	Rating **	M	Issue No.	110	
LM End	2.38	Issue Type +	En	Location *		
Category	Supplemental			GPS Latitude/Longitude		
				Start	End	
Item	DWR UCIP Field Study			39.406471 °	39.406471 °	
				-121.995551 °	-121.995551 °	
DWR ID						
Comment Code						
Inspector Comment						
FS_ID:14582 DS_ID:18827 EP_NO: 9936 Repair Type: Non-Urgent Crossing Status: Found UCIP Comments: Appears abandoned. Pipe buried on WS and blocked with tin and soil on the LS. FIELD_STRUCT_DESC: 24-inch corrugated metal irrigation pipe through the levee, 18.3 feet below crown. Slide gate on the waterside (WS) end. 5-foot by 7-foot concrete distribution box at the landside (LS) toe. (Automatic Board Order (ABO) issued as Permit No. 9936, 1974 - J. A. and Florence Watt). [Additional Reference(s): DWR Levee Log, 1992. USACE Sacramento O&M Manual 136, March 1960 (HLM 22.82)]. FS Date: 6/4/2013						

Photo 1 of 3 : UCIP_FA_2017_14582_24076.jpg



Slide gate at WS toe.

* Location LS : Land Side N/A : Not Applicable WS : Water Side CR : Crown		** Rating A : Acceptable M : Minimally Acceptable U : Unacceptable N : Not Inspected/Rated C : Corrected A/W : Acceptable but Monitor & Maintain		+ Issue Type Ma : Maintenance Deficiency Ob : Design & System Obsolescence En : Enforcement
--	--	---	--	---

**Flood Control Project Maintenance
Levee Inspections**

Levee Inspection Report By Mile - Fall 2017

Levee District No. 0003 (Glenn County)

Waterway	Bank	Unit Miles	Inspection Start/End	Inspector
Unit No. 01 Glenn County Sacramento River	Left	11.97	10/26/2017 10/26/2017	Bob Duffey

LM Start	2.93	Rating **	C	Issue No.	43
LM End	2.93	Issue Type +	En	Location *	LS
Category	Earthen Levee			GPS Latitude/Longitude	
				Start	End
Item	Encroachments			39.412162 °	39.412162 °
				-121.991033 °	-121.991033 °
DWR ID	DWR_LD0003_01_s_2017_43				
Comment Code					
PR : Prunings					
Inspector Comment					
The prunings was removed from the landside toe.					

No Photos

LM Start	2.98	Rating **	M	Issue No.	111
LM End	2.98	Issue Type +	En	Location *	
Category	Supplemental			GPS Latitude/Longitude	
				Start	End
Item	DWR UCIP Field Study			39.412827 °	39.412827 °
				-121.991427 °	-121.991427 °
DWR ID					
Comment Code					
Inspector Comment					
FS_ID:14584 DS_ID:18829 EP_NO: 9919 Repair Type: Non-Urgent Crossing Status: Indicator Found UCIP Comments: Appears abandoned. Verify it was done corectly. FIELD_STRUCT_DESC: *ABANDONED* 24-inch corrugated metal irrigation pipe through the levee, 16 feet below the crown. Slide gate on the waterside (WS) end. 5-foot by 7-foot concrete distribution box at landside (LS) toe is filled with grout. (Automatic Board Order (ABO) issued as Permit No. 9919, 1974 - Roy and Annie Mills). [Additional Reference(s): DWR Levee Log, 1992. USACE Sacramento O&M Manual 136, March 1960 (HLM 23.43)]. FS Date: 6/4/2013					

Photo 1 of 2 : UCIP_FA_2017_14584_24081.jpg



5'X7' concrete distribution box filled in with grout.

* Location	** Rating	+ Issue Type
LS : Land Side WS : Water Side CR : Crown	A : Acceptable M : Minimally Acceptable U : Unacceptable	Ma : Maintenance Deficiency Ob : Design & System Obsolescence En : Enforcement
N/A : Not Applicable	N : Not Inspected/Rated C : Corrected A/W : Acceptable but Monitor & Maintain	

**Flood Control Project Maintenance
Levee Inspections**

Levee Inspection Report By Mile - Fall 2017

Levee District No. 0003 (Glenn County)

Waterway	Bank	Unit Miles	Inspection Start/End	Inspector
Unit No. 01 Glenn County Sacramento River	Left	11.97	10/26/2017 10/26/2017	Bob Duffey

LM Start	2.98	Rating **	M	Issue No.	111 (cont)	
LM End	2.98	Issue Type +	En	Location *		
Category	Supplemental			GPS Latitude/Longitude		
				Start		End
Item	DWR UCIP Field Study			39.412827 °		39.412827 °
				-121.991427 °		-121.991427 °
DWR ID						
Comment Code						
Inspector Comment						
FS_ID:14584 DS_ID:18829 EP_NO: 9919 Repair Type: Non-Urgent Crossing Status: Indicator Found UCIP Comments: Appears abandoned. Verify it was done corectly. FIELD_STRUCT_DESC: *ABANDONED* 24-inch corrugated metal irrigation pipe through the levee, 16 feet below the crown. Slide gate on the waterside (WS) end. 5-foot by 7-foot concrete distribution box at landside (LS) toe is filled with grout. (Automatic Board Order (ABO) issued as Permit No. 9919, 1974 - Roy and Annie Mills). [Additional Reference(s): DWR Levee Log, 1992. USACE Sacramento O&M Manual 136, March 1960 (HLM 23.43)]. FS Date: 6/4/2013						

Photo 2 of 2 : UCIP_FA_2017_14584_24080.jpg



Distribution box on LS toe.

LM Start	2.98	Rating **	M	Issue No.	102
LM End	2.98	Issue Type +	Ma	Location *	LS
Category	Earthen Levee			GPS Latitude/Longitude	
				Start	End
Item	Animal Control			39.412909 °	39.412909 °
				-121.991446 °	-121.991446 °
DWR ID	DWR_LD0003_01_f_2016_102				
Comment Code					
A1 : Exterminate rodents and backfill and compact or grout burrows.					
Inspector Comment					

Photo 1 of 1 : FA_2017_LD0003_27_102_20170911_00064.jpg



View of the rodent holes along the landside slope.

* Location LS : Land Side N/A : Not Applicable WS : Water Side CR : Crown		** Rating A : Acceptable M : Minimally Acceptable U : Unacceptable		N : Not Inspected/Rated C : Corrected A/W : Acceptable but Monitor & Maintain		+ Issue Type Ma : Maintenance Deficiency Ob : Design & System Obsolescence En : Enforcement	
--	--	--	--	---	--	---	--

**Flood Control Project Maintenance
Levee Inspections**

Levee Inspection Report By Mile - Fall 2017

Levee District No. 0003 (Glenn County)

Waterway	Bank	Unit Miles	Inspection Start/End	Inspector
Unit No. 01 Glenn County Sacramento River	Left	11.97	10/26/2017 10/26/2017	Bob Duffey

LM Start	3.39	Rating **	M	Issue No.	9
LM End	3.39	Issue Type +	Ma	Location *	LS
Category	Earthen Levee			GPS Latitude/Longitude	
				Start	End
Item	Slope Stability			39.418382 °	39.418382 °
				-121.992480 °	-121.992480 °
DWR ID	DWR_LD0003_01_s_2012_9				
Comment Code					
S3 : Repair the levee slope damaged by vehicle traffic and prevent access where possible.					
Inspector Comment					
Repair the erosion along the landside slope and prevent vehicle access					

Photo 1 of 1 : FA_2017_LD0003_27_9_20170911_00006.jpg



View of the vehicle erosion along the landside slope.

LM Start	3.54	Rating **	M	Issue No.	101
LM End	3.54	Issue Type +	Ma	Location *	LS
Category	Earthen Levee			GPS Latitude/Longitude	
				Start	End
Item	Animal Control			39.420537 °	39.420537 °
				-121.992206 °	-121.992206 °
DWR ID	DWR_LD0003_01_f_2016_101				
Comment Code					
A3 : No rodents visible, but rodent burrows visible; need to backfill and compact or grout burrows.					
Inspector Comment					

No Photos

LM Start	3.76	Rating **	M	Issue No.	19	
LM End	3.76	Issue Type +	Ma	Location *	LS	
Category	Earthen Levee			GPS Latitude/Longitude		
				Start	End	
Item	Slope Stability			39.423747 °	39.423747 °	
				-121.991667 °	-121.991667 °	
DWR ID	DWR_LD0003_01_s_2012_19					
Comment Code						
S3 : Repair the levee slope damaged by vehicle traffic and prevent access where possible.						
Inspector Comment						

Photo 1 of 1 : FA_2017_LD0003_27_19_20170911_00013.jpg



View of the vehicle erosion along the landside slope.

* Location LS : Land Side N/A : Not Applicable WS : Water Side CR : Crown		** Rating A : Acceptable N : Not Inspected/Rated M : Minimally Acceptable C : Corrected U : Unacceptable A/W : Acceptable but Monitor & Maintain		+ Issue Type Ma : Maintenance Deficiency Ob : Design & System Obsolescence En : Enforcement	
--	--	---	--	---	--

**Flood Control Project Maintenance
Levee Inspections**

Levee Inspection Report By Mile - Fall 2017

Levee District No. 0003 (Glenn County)

Waterway	Bank	Unit Miles	Inspection Start/End	Inspector
Unit No. 01 Glenn County Sacramento River	Left	11.97	10/26/2017 10/26/2017	Bob Duffey

LM Start	3.88	Rating **	M	Issue No.	59
LM End	3.88	Issue Type +	Ma	Location *	WS
Category	Earthen Levee			GPS Latitude/Longitude	
				Start	End
Item	Animal Control			39.425162 °	39.425162 °
				-121.990528 °	-121.990528 °
DWR ID	DWR_LD0003_01_f_2015_59				
Comment Code					
A3 : No rodents visible, but rodent burrows visible; need to backfill and compact or grout burrows.					
Inspector Comment					

Photo 1 of 1 : FA_2017_LD0003_27_59_20170911_00038.jpg



View of the rodent holes along the landside slope.

LM Start	4.20	Rating **	U	Issue No.	58
LM End	4.20	Issue Type +	Ma	Location *	WS
Category	Earthen Levee			GPS Latitude/Longitude	
				Start	End
Item	Animal Control			39.429097 °	39.429097 °
				-121.987510 °	-121.987510 °
DWR ID	DWR_LD0003_01_f_2017_58				
Comment Code					
A3 : No rodents visible, but rodent burrows visible; need to backfill and compact or grout burrows.					
Inspector Comment					
Repair the rodent holes along the waterside slope.					

Photo 1 of 1 : FA_2017_LD0003_27_58_20171030_00109.jpg



View of the rodent holes along the waterside slope.

LM Start	4.20	Rating **	C	Issue No.	100
LM End	4.20	Issue Type +	En	Location *	WS
Category	Earthen Levee			GPS Latitude/Longitude	
				Start	End
Item	Encroachments			39.429148 °	39.429148 °
				-121.987486 °	-121.987486 °
DWR ID	DWR_LD0003_01_f_2016_100				
Comment Code					
PR : Prunings					
Inspector Comment					
Remove the prunings from the waterside slope.					

No Photos

* Location		** Rating		+ Issue Type	
LS : Land Side	N/A : Not Applicable	A : Acceptable	N : Not Inspected/Rated	Ma : Maintenance Deficiency	
WS : Water Side		M : Minimally Acceptable	C : Corrected	Ob : Design & System Obsolescence	
CR : Crown		U : Unacceptable	A/W : Acceptable but Monitor & Maintain	En : Enforcement	

**Flood Control Project Maintenance
Levee Inspections**

Levee Inspection Report By Mile - Fall 2017

Levee District No. 0003 (Glenn County)

Waterway	Bank	Unit Miles	Inspection Start/End	Inspector
Unit No. 01 Glenn County Sacramento River	Left	11.97	10/26/2017 10/26/2017	Bob Duffey

LM Start	4.33	Rating **	M	Issue No.	66
LM End	4.33	Issue Type +	Ma	Location *	LS
Category	Earthen Levee			GPS Latitude/Longitude	
				Start	End
Item	Encroachments			39.430927 °	39.430927 °
				-121.987142 °	-121.987142 °
DWR ID	DWR_LD0003_01_f_2015_66				
Comment Code					
PR : Prunings					
Inspector Comment					
Remove the prunings from the landside slope.					

Photo 1 of 1 : FA_2017_LD0003_27_66_20170911_00045.jpg



View of the prunings along the landside toe.

LM Start	4.63	Rating **	U	Issue No.	64
LM End	4.68	Issue Type +	Ma	Location *	LS
Category	Earthen Levee			GPS Latitude/Longitude	
				Start	End
Item	Animal Control			39.435205 °	39.435855 °
				-121.988097 °	-121.988252 °
DWR ID	DWR_LD0003_01_f_2013_64				
Comment Code					
A3 : No rodents visible, but rodent burrows visible; need to backfill and compact or grout burrows.					
Inspector Comment					

Photo 1 of 1 : FA_2017_LD0003_27_64_20170911_00043.jpg



View of the rodent activity along the landside slope.

LM Start	4.66	Rating **	M	Issue No.	63
LM End	4.66	Issue Type +	Ma	Location *	LS
Category	Earthen Levee			GPS Latitude/Longitude	
				Start	End
Item	Encroachments			39.435701 °	39.435701 °
				-121.988189 °	-121.988189 °
DWR ID	DWR_LD0003_01_f_2013_63				
Comment Code					
PR : Prunings					
Inspector Comment					
Remove the prunings from the landside toe.					

Photo 1 of 1 : FA_2017_LD0003_27_63_20170911_00042.jpg



View of the prunings along the landside toe.

* Location LS : Land Side N/A : Not Applicable WS : Water Side CR : Crown		** Rating A : Acceptable M : Minimally Acceptable U : Unacceptable N : Not Inspected/Rated C : Corrected A/W : Acceptable but Monitor & Maintain		+ Issue Type Ma : Maintenance Deficiency Ob : Design & System Obsolescence En : Enforcement	
--	--	---	--	---	--

**Flood Control Project Maintenance
Levee Inspections**

Levee Inspection Report By Mile - Fall 2017

Levee District No. 0003 (Glenn County)

Waterway	Bank	Unit Miles	Inspection Start/End	Inspector
Unit No. 01 Glenn County Sacramento River	Left	11.97	10/26/2017 10/26/2017	Bob Duffey

LM Start	4.68	Rating **	M	Issue No.	2
LM End	4.68	Issue Type +	Ma	Location *	LS
Category	Earthen Levee			GPS Latitude/Longitude	
				Start	End
Item	Slope Stability			39.435907 °	39.435907 °
				-121.988242 °	-121.988242 °
DWR ID	DWR_LD0003_01_f_2013_2				
Comment Code					
S3 : Repair the levee slope damaged by vehicle traffic and prevent access where possible.					
Inspector Comment					
Tire ruts on both sides of the levee.					

No Photos

LM Start	4.82	Rating **	M	Issue No.	68
LM End	4.82	Issue Type +	En	Location *	LS
Category	Earthen Levee			GPS Latitude/Longitude	
				Start	End
Item	Encroachments			39.437857 °	39.437857 °
				-121.988754 °	-121.988754 °
DWR ID	DWR_LD0003_01_s_2014_68				
Comment Code					
PR : Prunings					
Inspector Comment					

Photo 1 of 1 : FA_2017_LD0003_27_68_20170911_00046.jpg



View of the prunings along the landside toe.

* Location LS : Land Side N/A : Not Applicable WS : Water Side CR : Crown	** Rating A : Acceptable M : Minimally Acceptable U : Unacceptable	N : Not Inspected/Rated C : Corrected A/W : Acceptable but Monitor & Maintain	+ Issue Type Ma : Maintenance Deficiency Ob : Design & System Obsolescence En : Enforcement
--	--	---	---

**Flood Control Project Maintenance
Levee Inspections**

Levee Inspection Report By Mile - Fall 2017

Levee District No. 0003 (Glenn County)

Waterway	Bank	Unit Miles	Inspection Start/End	Inspector
Unit No. 01 Glenn County Sacramento River	Left	11.97	10/26/2017 10/26/2017	Bob Duffey

LM Start	4.96	Rating **	M	Issue No.	112
LM End	4.96	Issue Type +	En	Location *	
Category	Supplemental			GPS Latitude/Longitude	
				Start	End
Item	DWR UCIP Field Study			39.439791 °	39.439791 °
				-121.989825 °	-121.989825 °
DWR ID					
Comment Code					
Inspector Comment					
FS_ID:15163					
DS_ID:23152					
EP_NO: N/A					
Repair Type: Non-Urgent					
Crossing Status: Found					
UCIP Comments: No permit identified for this crossing.					
FIELD_STRUCT_DESC: 4-inch steel irrigation pipe through the levee,					
at an unknown depth. Pump, vent, and shutoff valve off the landside					
(LS) toe. Possible shutoff valve off the waterside (WS) toe.					
FS Date: 6/4/2013					

Photo 1 of 3 : UCIP_FA_2017_15163_24902.jpg



Possible shutoff valve on WS toe.

LM Start	4.96	Rating **	M	Issue No.	112 (cont)
LM End	4.96	Issue Type +	En	Location *	

Photo 2 of 3 : UCIP_FA_2017_15163_24901.jpg



Pumping plant off LS toe.

* Location LS : Land Side N/A : Not Applicable WS : Water Side CR : Crown	** Rating A : Acceptable M : Minimally Acceptable U : Unacceptable N : Not Inspected/Rated C : Corrected A/W : Acceptable but Monitor & Maintain	+ Issue Type Ma : Maintenance Deficiency Ob : Design & System Obsolescence En : Enforcement
--	---	---

**Flood Control Project Maintenance
Levee Inspections**

Levee Inspection Report By Mile - Fall 2017

Levee District No. 0003 (Glenn County)

Waterway	Bank	Unit Miles	Inspection Start/End	Inspector
Unit No. 01 Glenn County Sacramento River	Left	11.97	10/26/2017 10/26/2017	Bob Duffey

LM Start	4.96	Rating **	M	Issue No.	112 (cont)
LM End	4.96	Issue Type +	En	Location *	
Category	Supplemental			GPS Latitude/Longitude	
				Start	End
Item	DWR UCIP Field Study			39.439791 °	39.439791 °
				-121.989825 °	-121.989825 °
DWR ID					
Comment Code					
Inspector Comment					
FS_ID:15163 DS_ID:23152 EP_NO: N/A Repair Type: Non-Urgent Crossing Status: Found UCIP Comments: No permit identified for this crossing. FIELD_STRUCT_DESC: 4-inch steel irrigation pipe through the levee, at an unknown depth. Pump, vent, and shutoff valve off the landside (LS) toe. Possible shutoff valve off the waterside (WS) toe. FS Date: 6/4/2013					

Photo 3 of 3 : UCIP_FA_2017_15163_24900.jpg



Pumping plant off LS toe.

LM Start	5.05	Rating **	M	Issue No.	44
LM End	5.05	Issue Type +	En	Location *	LS
Category	Earthen Levee			GPS Latitude/Longitude	
				Start	End
Item	Encroachments			39.440993 °	39.440993 °
				-121.990412 °	-121.990412 °
DWR ID	DWR_LD0003_01_s_2017_44				
Comment Code					
PR : Prunings					
Inspector Comment					
Remove the prunings from the landside slope and toe.					

Photo 1 of 1 : FA_2017_LD0003_27_44_20170911_00024.jpg



View of the prunings along the landside slope and toe.

* Location LS : Land Side N/A : Not Applicable WS : Water Side CR : Crown		** Rating A : Acceptable M : Minimally Acceptable U : Unacceptable		N : Not Inspected/Rated C : Corrected A/W : Acceptable but Monitor & Maintain		+ Issue Type Ma : Maintenance Deficiency Ob : Design & System Obsolescence En : Enforcement	
--	--	--	--	---	--	---	--

**Flood Control Project Maintenance
Levee Inspections**

Levee Inspection Report By Mile - Fall 2017

Levee District No. 0003 (Glenn County)

Waterway	Bank	Unit Miles	Inspection Start/End	Inspector
Unit No. 01 Glenn County Sacramento River	Left	11.97	10/26/2017 10/26/2017	Bob Duffey

LM Start	5.06	Rating **	M	Issue No.	69
LM End	5.06	Issue Type +	Ma	Location *	LS
Category	Earthen Levee			GPS Latitude/Longitude	
				Start	End
Item	Encroachments			39.441057 °	39.441057 °
				-121.990458 °	-121.990458 °
DWR ID	DWR_LD0003_01_f_2015_69				
Comment Code					
PR : Prunings					
Inspector Comment					
Remove the prunings from the landside slope.					

Photo 1 of 1 : FA_2017_LD0003_27_69_20170911_00047.jpg



View of the prunings along the landside slope.

LM Start	5.06	Rating **	U	Issue No.	21
LM End	5.25	Issue Type +	Ma	Location *	LS
Category	Earthen Levee			GPS Latitude/Longitude	
				Start	End
Item	Animal Control			39.441128 °	39.443793 °
				-121.990475 °	-121.991297 °
DWR ID	DWR_LD0003_01_f_2015_21				
Comment Code					
A3 : No rodents visible, but rodent burrows visible; need to backfill and compact or grout burrows.					
Inspector Comment					

Photo 1 of 1 : FA_2017_LD0003_27_21_20170911_00014.jpg



View of the rodent holes along the landside slope.

LM Start	5.38	Rating **	U	Issue No.	70
LM End	5.39	Issue Type +	Ma	Location *	LS
Category	Earthen Levee			GPS Latitude/Longitude	
				Start	End
Item	Animal Control			39.445619 °	39.445808 °
				-121.991510 °	-121.991552 °
DWR ID	DWR_LD0003_01_f_2015_70				
Comment Code					
A3 : No rodents visible, but rodent burrows visible; need to backfill and compact or grout burrows.					
Inspector Comment					

Photo 1 of 1 : FA_2017_LD0003_27_70_20170911_00048.jpg



View of the rodent holes along the landside slope.

* Location LS : Land Side N/A : Not Applicable WS : Water Side CR : Crown		** Rating A : Acceptable M : Minimally Acceptable U : Unacceptable		N : Not Inspected/Rated C : Corrected A/W : Acceptable but Monitor & Maintain		+ Issue Type Ma : Maintenance Deficiency Ob : Design & System Obsolescence En : Enforcement	
--	--	--	--	---	--	---	--

**Flood Control Project Maintenance
Levee Inspections**

Levee Inspection Report By Mile - Fall 2017

Levee District No. 0003 (Glenn County)

Waterway	Bank	Unit Miles	Inspection Start/End	Inspector
Unit No. 01 Glenn County Sacramento River	Left	11.97	10/26/2017 10/26/2017	Bob Duffey

LM Start	5.53	Rating **	U	Issue No.	62
LM End	5.62	Issue Type +	Ma	Location *	LS
Category	Earthen Levee			GPS Latitude/Longitude	
				Start	End
Item	Animal Control			39.447900 °	39.449115 °
				-121.991748 °	-121.991873 °
DWR ID	DWR_LD0003_01_f_2013_62				
Comment Code					
A3 : No rodents visible, but rodent burrows visible; need to backfill and compact or grout burrows.					
Inspector Comment					

Photo 1 of 1 : FA_2017_LD0003_27_62_20170911_00041.jpg



View of the rodent holes along the landside slope.

LM Start	5.77	Rating **	M	Issue No.	25
LM End	5.88	Issue Type +	Ma	Location *	LS
Category	Earthen Levee			GPS Latitude/Longitude	
				Start	End
Item	Encroachments			39.451293 °	39.452872 °
				-121.992370 °	-121.992897 °
DWR ID	DWR_LD0003_01_s_2012_25				
Comment Code					
AV : Abandoned vehicles					
Inspector Comment					

Photo 1 of 1 : FA_2017_LD0003_27_25_20170911_00015.jpg



View of the equipment along the landside toe.

* Location LS : Land Side N/A : Not Applicable WS : Water Side CR : Crown		** Rating A : Acceptable N : Not Inspected/Rated M : Minimally Acceptable C : Corrected U : Unacceptable A/W : Acceptable but Monitor & Maintain		+ Issue Type Ma : Maintenance Deficiency Ob : Design & System Obsolescence En : Enforcement
--	--	---	--	---

**Flood Control Project Maintenance
Levee Inspections**

Levee Inspection Report By Mile - Fall 2017

Levee District No. 0003 (Glenn County)

Waterway	Bank	Unit Miles	Inspection Start/End	Inspector
Unit No. 01 Glenn County Sacramento River	Left	11.97	10/26/2017 10/26/2017	Bob Duffey

LM Start	6.02	Rating **	M	Issue No.	11
LM End	6.05	Issue Type +	Ma	Location *	WS
Category	Supplemental			GPS Latitude/Longitude	
				Start	End
Item	2015 USACE Erosion Survey, DRAFT			39.454696 °	39.455096 °
				-121.994107 °	-121.994217 °
DWR ID	DWR_LD0003_01_s_2016_11				
Comment Code					
Inspector Comment					
1997 - Erosion of top left bank; eroding downstream of rock section where levee is closest to the bank, approximately 40 to 50 ft of bank retreat, some berm left. 1999 - Some new beach sedimentation at toe. 2000 - Snags in eddy area could induce bank erosion at higher flows. 2002 - Small bar is gone. 2003 - Bar is present and higher. 2004 - Some new deposition on the bank at the upstream end. 2006 - New sand on bar and bank. 2007 - New sand deposition with vegetation colonizing bars between dikes. 2008 - More eddy sedimentation and vegetation on bar along bank. Bank is healing due to retreat of right bank. 2009 - Additional bar sedimentation. 2010 - some deposition at toe, new erosion on opposite bank. Site continues to heal. 2012 - Majority of site healed but upstream end still needs toe rock. 2015: Last observed in 2013. [2015 Site ID: SAC_168-3_L]					

No Photos

LM Start	6.06	Rating **	M	Issue No.	71
LM End	6.06	Issue Type +	Ma	Location *	LS
Category	Earthen Levee			GPS Latitude/Longitude	
				Start	End
Item	Animal Control			39.455313 °	39.455313 °
				-121.993712 °	-121.993712 °
DWR ID	DWR_LD0003_01_f_2015_71				
Comment Code					
A3 : No rodents visible, but rodent burrows visible; need to backfill and compact or grout burrows.					
Inspector Comment					

Photo 1 of 1 : FA_2017_LD0003_27_71_20170911_00049.jpg



View of the rodent holes along the landside slope.

* Location LS : Land Side N/A : Not Applicable WS : Water Side CR : Crown		** Rating A : Acceptable M : Minimally Acceptable U : Unacceptable N : Not Inspected/Rated C : Corrected A/W : Acceptable but Monitor & Maintain		+ Issue Type Ma : Maintenance Deficiency Ob : Design & System Obsolescence En : Enforcement	
---	--	--	--	--	--

**Flood Control Project Maintenance
Levee Inspections**

Levee Inspection Report By Mile - Fall 2017

Levee District No. 0003 (Glenn County)

Waterway	Bank	Unit Miles	Inspection Start/End	Inspector
Unit No. 01 Glenn County Sacramento River	Left	11.97	10/26/2017 10/26/2017	Bob Duffey

LM Start	6.11	Rating **	M	Issue No.	72
LM End	6.11	Issue Type +	Ma	Location *	LS
Category	Earthen Levee			GPS Latitude/Longitude	
				Start	End
Item	Animal Control			39.456018 °	39.456018 °
				-121.993772 °	-121.993772 °
DWR ID	DWR_LD0003_01_f_2015_72				
Comment Code					
A3 : No rodents visible, but rodent burrows visible; need to backfill and compact or grout burrows.					
Inspector Comment					

Photo 1 of 1 : FA_2017_LD0003_27_72_20170911_00050.jpg



View of the rodent holes along the landside slope.

LM Start	6.19	Rating **	M	Issue No.	113	
LM End	6.19	Issue Type +	En	Location *		
Category	Supplemental			GPS Latitude/Longitude		
				Start	End	
Item	DWR UCIP Field Study			39.457170 °	39.457170 °	
				-121.993836 °	-121.993836 °	
DWR ID						
Comment Code						
Inspector Comment						
FS_ID:14643 DS_ID:18846 EP_NO: N/A Repair Type: Non-Urgent Crossing Status: Found UCIP Comments: Appears abandoned and should be done so properly. FIELD_STRUCT_DESC: 14-inch steel irrigation pipe through the levee, 15 feet below the crown. Pump missing from waterside (WS) slope. 36-inch concrete standpipe and concrete channel on landside (LS) toe. [Additional Reference(s): USACE Sacramento O&M Manual 138, July 1955 (Station 1129+75)]. FS Date: 6/4/2013						

Photo 1 of 3 : UCIP_FA_2017_14643_24142.jpg



Concrete standpipe on LS toe.

* Location LS : Land Side N/A : Not Applicable WS : Water Side CR : Crown	** Rating A : Acceptable M : Minimally Acceptable U : Unacceptable	N : Not Inspected/Rated C : Corrected A/W : Acceptable but Monitor & Maintain	+ Issue Type Ma : Maintenance Deficiency Ob : Design & System Obsolescence En : Enforcement
--	--	---	---

**Flood Control Project Maintenance
Levee Inspections**

Levee Inspection Report By Mile - Fall 2017

Levee District No. 0003 (Glenn County)

Waterway	Bank	Unit Miles	Inspection Start/End	Inspector
Unit No. 01 Glenn County Sacramento River	Left	11.97	10/26/2017 10/26/2017	Bob Duffey

LM Start	6.19	Rating **	M	Issue No.	113 (cont)	
LM End	6.19	Issue Type +	En	Location *		
Category	Supplemental			GPS Latitude/Longitude		
				Start	End	
Item	DWR UCIP Field Study			39.457170 °	39.457170 °	
				-121.993836 °	-121.993836 °	
DWR ID						
Comment Code						
Inspector Comment						
FS_ID:14643						
DS_ID:18846						
EP_NO: N/A						
Repair Type: Non-Urgent						
Crossing Status: Found						
UCIP Comments: Appears abandoned and should be done so properly.						
FIELD_STRUCT_DESC: 14-inch steel irrigation pipe through the levee,						
15 feet below the crown. Pump missing from waterside (WS) slope. 36-						
inch concrete standpipe and concrete channel on landside (LS) toe.						
[Additional Reference(s): USACE Sacramento O&M Manual 138, July						
1955 (Station 1129+75)].						
FS Date: 6/4/2013						

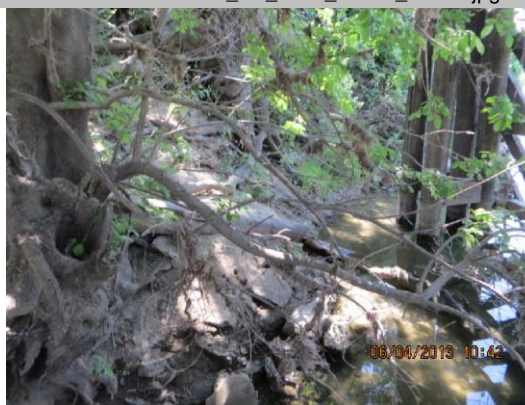
Photo 2 of 3 : UCIP_FA_2017_14643_24141.jpg



Concrete standpipe and channel on LS toe.

LM Start	6.19	Rating **	M	Issue No.	113 (cont)
LM End	6.19	Issue Type +	En	Location *	

Photo 3 of 3 : UCIP_FA_2017_14643_24140.jpg



14-inch Pipe debris on WS toe.

* Location LS : Land Side N/A : Not Applicable WS : Water Side CR : Crown	** Rating A : Acceptable M : Minimally Acceptable U : Unacceptable N : Not Inspected/Rated C : Corrected A/W : Acceptable but Monitor & Maintain	+ Issue Type Ma : Maintenance Deficiency Ob : Design & System Obsolescence En : Enforcement
--	---	---

**Flood Control Project Maintenance
Levee Inspections**

Levee Inspection Report By Mile - Fall 2017

Levee District No. 0003 (Glenn County)

Waterway	Bank	Unit Miles	Inspection Start/End	Inspector
Unit No. 01 Glenn County Sacramento River	Left	11.97	10/26/2017 10/26/2017	Bob Duffey

LM Start	6.22	Rating **	U	Issue No.	99
LM End	6.22	Issue Type +	En	Location *	LS
Category	Earthen Levee			GPS Latitude/Longitude	
				Start	End
Item	Encroachments			39.457648 °	39.457648 °
				-121.993767 °	-121.993767 °
DWR ID	DWR_LD0003_01_f_2016_99				
Comment Code					
DE : Debris					
Inspector Comment					
Straw bales at the landside toe.					

Photo 1 of 1 : FA_2017_LD0003_27_99_20170911_00063.jpg



View of the straw bales along the landside toe.

LM Start	6.24	Rating **	M	Issue No.	7
LM End	6.38	Issue Type +	Ma	Location *	LS
Category	Earthen Levee			GPS Latitude/Longitude	
				Start	End
Item	Trim / Thin Trees			39.457968 °	39.459955 °
				-121.993712 °	-121.993512 °
DWR ID	DWR_LD0003_01_s_2012_7				
Comment Code					
T1 : Trim trees to at least five feet above ground level.					
Inspector Comment					

Photo 1 of 1 : FA_2017_LD0003_27_7_20170911_00005.jpg



Trim the trees 5 feet for better visibility.

LM Start	6.29	Rating **	M	Issue No.	48
LM End	6.38	Issue Type +	Ma	Location *	WS
Category	Earthen Levee			GPS Latitude/Longitude	
				Start	End
Item	Trim / Thin Trees			39.458587 °	39.459912 °
				-121.993777 °	-121.993592 °
DWR ID	DWR_LD0003_01_s_2012_48				
Comment Code					
T1 : Trim trees to at least five feet above ground level.					
Inspector Comment					

Photo 1 of 1 : FA_2017_LD0003_27_48_20170911_00026.jpg



Trim trees 5 feet above ground for better visibility.

* Location LS : Land Side N/A : Not Applicable WS : Water Side CR : Crown		** Rating A : Acceptable M : Minimally Acceptable U : Unacceptable		N : Not Inspected/Rated C : Corrected A/W : Acceptable but Monitor & Maintain		+ Issue Type Ma : Maintenance Deficiency Ob : Design & System Obsolescence En : Enforcement	
--	--	--	--	---	--	---	--

**Flood Control Project Maintenance
Levee Inspections**

Levee Inspection Report By Mile - Fall 2017

Levee District No. 0003 (Glenn County)

Waterway	Bank	Unit Miles	Inspection Start/End	Inspector
Unit No. 01 Glenn County Sacramento River	Left	11.97	10/26/2017 10/26/2017	Bob Duffey

LM Start	6.36	Rating **	U	Issue No.	65
LM End	6.36	Issue Type +	En	Location *	LS
Category	Earthen Levee			GPS Latitude/Longitude	
				Start	End
Item	Encroachments			39.459690 °	39.459690 °
				-121.993680 °	-121.993680 °
DWR ID	DWR_LD0003_01_s_2016_65				
Comment Code					
DE : Debris					
Inspector Comment					
broken concrete and soil					

Photo 1 of 1 : FA_2017_LD0003_27_65_20170911_00044.jpg



View of concrete and soil obstructing visibility and access.

LM Start	6.43	Rating **	U	Issue No.	74
LM End	6.43	Issue Type +	En	Location *	LS
Category	Earthen Levee			GPS Latitude/Longitude	
				Start	End
Item	Encroachments			39.460563 °	39.460563 °
				-121.993195 °	-121.993195 °
DWR ID	DWR_LD0003_01_f_2015_74				
Comment Code					
DE : Debris					
Inspector Comment					
Remove the metal roof from the landside slope.					

Photo 1 of 1 : FA_2017_LD0003_27_74_20170911_00051.jpg



View of the metal roof laying on the landside slope.

LM Start	6.50	Rating **	M	Issue No.	84
LM End	6.50	Issue Type +	Ma	Location *	LS
Category	Earthen Levee			GPS Latitude/Longitude	
				Start	End
Item	Trim / Thin Trees			39.461610 °	39.461610 °
				-121.992950 °	-121.992950 °
DWR ID	DWR_LD0003_01_s_2016_84				
Comment Code					
T1 : Trim trees to at least five feet above ground level.					
Inspector Comment					

No Photos

* Location		** Rating		+ Issue Type	
LS : Land Side	N/A : Not Applicable	A : Acceptable	N : Not Inspected/Rated	Ma : Maintenance Deficiency	
WS : Water Side		M : Minimally Acceptable	C : Corrected	Ob : Design & System Obsolescence	
CR : Crown		U : Unacceptable	A/W : Acceptable but Monitor & Maintain	En : Enforcement	

**Flood Control Project Maintenance
Levee Inspections**

Levee Inspection Report By Mile - Fall 2017

Levee District No. 0003 (Glenn County)

Waterway	Bank	Unit Miles	Inspection Start/End	Inspector
Unit No. 01 Glenn County Sacramento River	Left	11.97	10/26/2017 10/26/2017	Bob Duffey

LM Start	6.54	Rating **	M	Issue No.	114
LM End	6.54	Issue Type +	En	Location *	
Category	Supplemental			GPS Latitude/Longitude	
				Start	End
Item	DWR UCIP Field Study			39.462146 °	39.462146 °
				-121.992832 °	-121.992832 °
DWR ID					
Comment Code					
Inspector Comment					
FS_ID:14664 DS_ID:18834 EP_NO: 9906 Repair Type: Non-Urgent Crossing Status: Found UCIP Comments: Pipe appears to be abandoned and should be done so properly. FIELD_STRUCT_DESC: 24-inch steel irrigation pipe through the levee, 13 feet below the crown. Slide gate on the waterside (WS) end. Pump house on berm. Slide gate in 7-foot by 12-foot concrete pit on the WS with flap gate on pipe from pump house. Pipe discharges into irrigation ditch on landward side. (Automatic Board Order (ABO) issued as Permit No. 9906, 1974 - Jeanette S. Clare). [Additional Reference(s): DWR Levee Log, 1992. USACE Sacramento O&M Manual 138, July 1955 (Station 1148+70)]. FS Date: 6/4/2013					

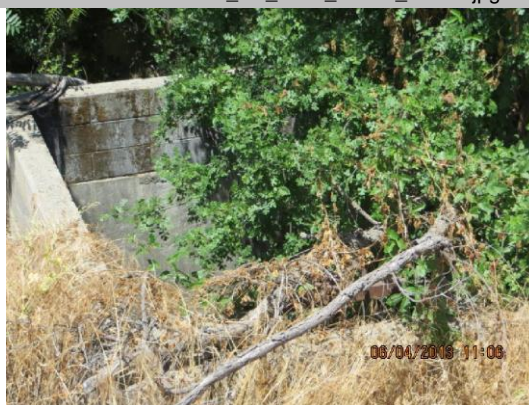
Photo 1 of 3 : UCIP_FA_2017_14664_24162.jpg



Pumphouse and 7'X12' concrete box on WS slope.

LM Start	6.54	Rating **	M	Issue No.	114 (cont)
LM End	6.54	Issue Type +	En	Location *	

Photo 2 of 3 : UCIP_FA_2017_14664_24161.jpg



7'X12' Concrete box with flap gate and slide gate on WS slope.

* Location LS : Land Side N/A : Not Applicable WS : Water Side CR : Crown		** Rating A : Acceptable N : Not Inspected/Rated M : Minimally Acceptable C : Corrected U : Unacceptable A/W : Acceptable but Monitor & Maintain		+ Issue Type Ma : Maintenance Deficiency Ob : Design & System Obsolescence En : Enforcement
--	--	---	--	---

**Flood Control Project Maintenance
Levee Inspections**

Levee Inspection Report By Mile - Fall 2017

Levee District No. 0003 (Glenn County)

Waterway	Bank	Unit Miles	Inspection Start/End	Inspector
Unit No. 01 Glenn County Sacramento River	Left	11.97	10/26/2017 10/26/2017	Bob Duffey

LM Start	6.54	Rating **	M	Issue No.	114 (cont)	
LM End	6.54	Issue Type +	En	Location *		
Category	Supplemental			GPS Latitude/Longitude		
				Start	End	
Item	DWR UCIP Field Study			39.462146 °	39.462146 °	
				-121.992832 °	-121.992832 °	
DWR ID						
Comment Code						
Inspector Comment						
FS_ID:14664 DS_ID:18834 EP_NO: 9906 Repair Type: Non-Urgent Crossing Status: Found UCIP Comments: Pipe appears to be abandoned and should be done so properly. FIELD_STRUCT_DESC: 24-inch steel irrigation pipe through the levee, 13 feet below the crown. Slide gate on the waterside (WS) end. Pump house on berm. Slide gate in 7-foot by 12-foot concrete pit on the WS with flap gate on pipe from pump house. Pipe discharges into irrigation ditch on landward side. (Automatic Board Order (ABO) issued as Permit No. 9906, 1974 - Jeanette S. Clare). [Additional Reference(s): DWR Levee Log, 1992. USACE Sacramento O&M Manual 138, July 1955 (Station 1148+70)]. FS Date: 6/4/2013						

Photo 3 of 3 : UCIP_FA_2017_14664_24160.jpg



Slidegate inside concrete box on WS slope.

LM Start	6.55	Rating **	M	Issue No.	98
LM End	6.55	Issue Type +	Ma	Location *	LS
Category	Earthen Levee			GPS Latitude/Longitude	
				Start	End
Item	Trim / Thin Trees			39.462275 °	39.462275 °
				-121.992825 °	-121.992825 °
DWR ID	DWR_LD0003_01_f_2016_98				
Comment Code					
T1 : Trim trees to at least five feet above ground level.					
Inspector Comment					

No Photos

* Location LS : Land Side N/A : Not Applicable WS : Water Side CR : Crown	** Rating A : Acceptable M : Minimally Acceptable U : Unacceptable	N : Not Inspected/Rated C : Corrected A/W : Acceptable but Monitor & Maintain	+ Issue Type Ma : Maintenance Deficiency Ob : Design & System Obsolescence En : Enforcement
--	--	---	---

**Flood Control Project Maintenance
Levee Inspections**

Levee Inspection Report By Mile - Fall 2017

Levee District No. 0003 (Glenn County)

Waterway	Bank	Unit Miles	Inspection Start/End	Inspector
Unit No. 01 Glenn County Sacramento River	Left	11.97	10/26/2017 10/26/2017	Bob Duffey

LM Start	6.57	Rating **	M	Issue No.	34
LM End	6.57	Issue Type +	Ma	Location *	LS
Category	Earthen Levee			GPS Latitude/Longitude	
				Start	End
Item	Slope Stability			39.462505 °	39.462505 °
				-121.992698 °	-121.992698 °
DWR ID	DWR_LD0003_01_s_2012_34				
Comment Code					
S3 : Repair the levee slope damaged by vehicle traffic and prevent access where possible.					
Inspector Comment					

Photo 1 of 1 : FA_2017_LD0003_27_34_20170911_00018.jpg



View of slope instability caused by vehicle traffic.

LM Start	6.59	Rating **	M	Issue No.	45
LM End	6.59	Issue Type +	En	Location *	WS
Category	Earthen Levee			GPS Latitude/Longitude	
				Start	End
Item	Encroachments			39.462815 °	39.462815 °
				-121.992723 °	-121.992723 °
DWR ID	DWR_LD0003_01_s_2012_45				
Comment Code					
BU : Building					
Inspector Comment					

No Photos

LM Start	6.60	Rating **	M	Issue No.	54
LM End	6.60	Issue Type +	En	Location *	WS
Category	Earthen Levee			GPS Latitude/Longitude	
				Start	End
Item	Encroachments			39.462963 °	39.462963 °
				-121.992688 °	-121.992688 °
DWR ID	DWR_LD0003_01_s_2017_54				
Comment Code					
EQ : Equipment					
Inspector Comment					
Remove the trailer from the waterside slope.					

Photo 1 of 1 : FA_2017_LD0003_27_54_20170911_00036.jpg



View the trailer on the waterside slope.

* Location LS : Land Side N/A : Not Applicable WS : Water Side CR : Crown		** Rating A : Acceptable M : Minimally Acceptable U : Unacceptable N : Not Inspected/Rated C : Corrected A/W : Acceptable but Monitor & Maintain		+ Issue Type Ma : Maintenance Deficiency Ob : Design & System Obsolescence En : Enforcement	
--	--	---	--	---	--

**Flood Control Project Maintenance
Levee Inspections**

Levee Inspection Report By Mile - Fall 2017

Levee District No. 0003 (Glenn County)

Waterway	Bank	Unit Miles	Inspection Start/End	Inspector
Unit No. 01 Glenn County Sacramento River	Left	11.97	10/26/2017 10/26/2017	Bob Duffey

LM Start	6.61	Rating **	M	Issue No.	46
LM End	6.61	Issue Type +	En	Location *	LS
Category	Earthen Levee			GPS Latitude/Longitude	
				Start	End
Item	Encroachments			39.463100 °	39.463100 °
				-121.992687 °	-121.992687 °
DWR ID	DWR_LD0003_01_s_2012_46				
Comment Code					
BU : Building					
Inspector Comment					

No Photos

LM Start	6.61	Rating **	U	Issue No.	76
LM End	6.61	Issue Type +	Ma	Location *	LS
Category	Earthen Levee			GPS Latitude/Longitude	
				Start	End
Item	Trim / Thin Trees			39.463185 °	39.463185 °
				-121.992657 °	-121.992657 °
DWR ID	DWR_LD0003_01_f_2015_76				
Comment Code					
T5 : Tree stumps.					
Inspector Comment					
Repair the burned out stump hole along the landside toe.					

Photo 1 of 1 : FA_2017_LD0003_27_76_20170911_00052.jpg



View of the burned out stump hole along the landside toe.

LM Start	6.63	Rating **	M	Issue No.	12
LM End	6.63	Issue Type +	Ma	Location *	LS
Category	Earthen Levee			GPS Latitude/Longitude	
				Start	End
Item	Slope Stability			39.463366 °	39.463366 °
				-121.992586 °	-121.992586 °
DWR ID	DWR_LD0003_01_f_2012_12				
Comment Code					
S1 : Repair slope instability.					
Inspector Comment					
Building has burned down.					

Photo 1 of 1 : FA_2017_LD0003_27_12_20170911_00010.jpg



View of concrete stairs & foundation along the slope of the levee.

* Location LS : Land Side N/A : Not Applicable WS : Water Side CR : Crown		** Rating A : Acceptable M : Minimally Acceptable U : Unacceptable N : Not Inspected/Rated C : Corrected A/W : Acceptable but Monitor & Maintain		+ Issue Type Ma : Maintenance Deficiency Ob : Design & System Obsolescence En : Enforcement	
--	--	---	--	---	--

**Flood Control Project Maintenance
Levee Inspections**

Levee Inspection Report By Mile - Fall 2017

Levee District No. 0003 (Glenn County)

Waterway	Bank	Unit Miles	Inspection Start/End	Inspector
Unit No. 01 Glenn County Sacramento River	Left	11.97	10/26/2017 10/26/2017	Bob Duffey

LM Start	6.72	Rating **	M	Issue No.	115
LM End	6.72	Issue Type +	En	Location *	
Category	Supplemental			GPS Latitude/Longitude	
				Start	End
Item	DWR UCIP Field Study			39.464596 °	39.464596 °
				-121.991850 °	-121.991850 °
DWR ID					
Comment Code					
Inspector Comment					
FS_ID:15165 DS_ID:23154 EP_NO: 13972 Repair Type: Non-Urgent Crossing Status: Found UCIP Comments: Pipe leaking on LS toe. FIELD_STRUCT_DESC: 1-inch steel drinking water line through the levee, at an unknown depth. Meter and siphon valve inside a concrete box at the landside (LS) toe. (Permit No. 13972, 1984 - County). FS Date: 6/4/2013					

Photo 1 of 3 : UCIP_FA_2017_15165_24906.jpg



Christy box on LS toe with siphon breaker and meter.

LM Start	6.72	Rating **	M	Issue No.	115 (cont)
LM End	6.72	Issue Type +	En	Location *	

Photo 2 of 3 : UCIP_FA_2017_15165_24905.jpg



Pipe leaking at LS toe.

* Location LS : Land Side N/A : Not Applicable WS : Water Side CR : Crown		** Rating A : Acceptable M : Minimally Acceptable U : Unacceptable		N : Not Inspected/Rated C : Corrected A/W : Acceptable but Monitor & Maintain		+ Issue Type Ma : Maintenance Deficiency Ob : Design & System Obsolescence En : Enforcement	
--	--	--	--	---	--	---	--

**Flood Control Project Maintenance
Levee Inspections**

Levee Inspection Report By Mile - Fall 2017

Levee District No. 0003 (Glenn County)

Waterway	Bank	Unit Miles	Inspection Start/End	Inspector
Unit No. 01 Glenn County Sacramento River	Left	11.97	10/26/2017 10/26/2017	Bob Duffey

LM Start	6.72	Rating **	M	Issue No.	115 (cont)
LM End	6.72	Issue Type +	En	Location *	
Category	Supplemental			GPS Latitude/Longitude	
				Start	End
Item	DWR UCIP Field Study			39.464596 °	39.464596 °
				-121.991850 °	-121.991850 °
DWR ID					
Comment Code					
Inspector Comment					
FS_ID:15165 DS_ID:23154 EP_NO: 13972 Repair Type: Non-Urgent Crossing Status: Found UCIP Comments: Pipe leaking on LS toe. FIELD_STRUCT_DESC: 1-inch steel drinking water line through the levee, at an unknown depth. Meter and siphon valve inside a concrete box at the landside (LS) toe. (Permit No. 13972, 1984 - County). FS Date: 6/4/2013					

Photo 3 of 3 : UCIP_FA_2017_15165_24904.jpg



Possible reason for water service (water fountain).

LM Start	6.72	Rating **	M	Issue No.	97
LM End	6.72	Issue Type +	Ma	Location *	WS
Category	Earthen Levee			GPS Latitude/Longitude	
				Start	End
Item	Slope Stability			39.464653 °	39.464653 °
				-121.991789 °	-121.991789 °
DWR ID	DWR_LD0003_01_f_2016_97				
Comment Code					
S3 : Repair the levee slope damaged by vehicle traffic and prevent access where possible.					
Inspector Comment					
Repair the vehicle ruts on the waterside slope.					

Photo 1 of 1 : FA_2017_LD0003_27_97_20170911_00062.jpg



View of the vehicle ruts on the waterside slope.

* Location LS : Land Side N/A : Not Applicable WS : Water Side CR : Crown		** Rating A : Acceptable M : Minimally Acceptable U : Unacceptable N : Not Inspected/Rated C : Corrected A/W : Acceptable but Monitor & Maintain		+ Issue Type Ma : Maintenance Deficiency Ob : Design & System Obsolescence En : Enforcement
--	--	---	--	---

**Flood Control Project Maintenance
Levee Inspections**

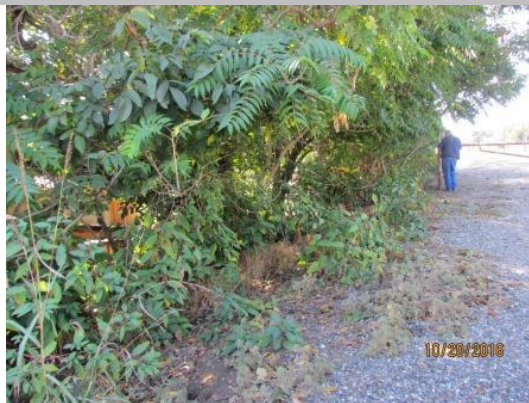
Levee Inspection Report By Mile - Fall 2017

Levee District No. 0003 (Glenn County)

Waterway	Bank	Unit Miles	Inspection Start/End	Inspector
Unit No. 01 Glenn County Sacramento River	Left	11.97	10/26/2017 10/26/2017	Bob Duffey

LM Start	6.75	Rating **	M	Issue No.	35
LM End	6.75	Issue Type +	Ma	Location *	LS
Category	Earthen Levee			GPS Latitude/Longitude	
				Start	End
Item	Trim / Thin Trees			39.465013 °	39.465013 °
				-121.991455 °	-121.991455 °
DWR ID	DWR_LD0003_01_s_2012_35				
Comment Code					
T1 : Trim trees to at least five feet above ground level.					
Inspector Comment					

Photo 1 of 1 : FA_2017_LD0003_27_35_20170911_00019.jpg



View of the trees that are hanging over the landside slope of the levee.

LM Start	6.79	Rating **	M	Issue No.	42
LM End	6.79	Issue Type +	En	Location *	LS
Category	Earthen Levee			GPS Latitude/Longitude	
				Start	End
Item	Encroachments			39.465567 °	39.465595 °
				-121.991415 °	-121.991412 °
DWR ID	DWR_LD0003_01_s_2012_42				
Comment Code					
BU : Building					
Inspector Comment					

Photo 1 of 1 : FA_2017_LD0003_27_42_20170911_00022.jpg



View of the building along the landside toe.

LM Start	6.85	Rating **	U	Issue No.	96
LM End	6.85	Issue Type +	En	Location *	LS
Category	Earthen Levee			GPS Latitude/Longitude	
				Start	End
Item	Encroachments			39.466449 °	39.466449 °
				-121.991376 °	-121.991376 °
DWR ID	DWR_LD0003_01_f_2016_96				
Comment Code					
DE : Debris					
Inspector Comment					
Large pile of molch at the landside toe.					

Photo 1 of 1 : FA_2017_LD0003_27_96_20170911_00061.jpg



View of a large pile of mulch along the landside toe.

* Location LS : Land Side N/A : Not Applicable WS : Water Side CR : Crown		** Rating A : Acceptable M : Minimally Acceptable U : Unacceptable N : Not Inspected/Rated C : Corrected A/W : Acceptable but Monitor & Maintain		+ Issue Type Ma : Maintenance Deficiency Ob : Design & System Obsolescence En : Enforcement	
--	--	---	--	---	--

**Flood Control Project Maintenance
Levee Inspections**

Levee Inspection Report By Mile - Fall 2017

Levee District No. 0003 (Glenn County)

Waterway	Bank	Unit Miles	Inspection Start/End	Inspector
Unit No. 01 Glenn County Sacramento River	Left	11.97	10/26/2017 10/26/2017	Bob Duffey

LM Start	6.91	Rating **	M	Issue No.	47
LM End	6.91	Issue Type +	En	Location *	WS
Category	Earthen Levee			GPS Latitude/Longitude	
				Start	End
Item	Encroachments			39.467358 °	39.467358 °
				-121.991333 °	-121.991333 °
DWR ID	DWR_LD0003_01_s_2017_47				
Comment Code					
TR : Tree or limb					
Inspector Comment					
Remove the tree from the waterside slope and toe.					

Photo 1 of 1 : FA_2017_LD0003_27_47_20170911_00025.jpg



View of the tree on the waterside slope and toe.

LM Start	7.05	Rating **	M	Issue No.	95
LM End	7.05	Issue Type +	En	Location *	LS
Category	Earthen Levee			GPS Latitude/Longitude	
				Start	End
Item	Encroachments			39.469287 °	39.469287 °
				-121.991239 °	-121.991239 °
DWR ID	DWR_LD0003_01_f_2016_95				
Comment Code					
PR : Prunings					
Inspector Comment					
Remove the prunings from the landside toe.					

Photo 1 of 1 : FA_2017_LD0003_27_95_20170911_00060.jpg



View of the prunings along the landside toe.

* Location LS : Land Side N/A : Not Applicable WS : Water Side CR : Crown		** Rating A : Acceptable N : Not Inspected/Rated M : Minimally Acceptable C : Corrected U : Unacceptable A/W : Acceptable but Monitor & Maintain		+ Issue Type Ma : Maintenance Deficiency Ob : Design & System Obsolescence En : Enforcement
--	--	---	--	---

**Flood Control Project Maintenance
Levee Inspections**

Levee Inspection Report By Mile - Fall 2017

Levee District No. 0003 (Glenn County)

Waterway	Bank	Unit Miles	Inspection Start/End	Inspector
Unit No. 01 Glenn County Sacramento River	Left	11.97	10/26/2017 10/26/2017	Bob Duffey

LM Start	7.13	Rating **	M	Issue No.	116
LM End	7.13	Issue Type +	En	Location *	
Category	Supplemental			GPS Latitude/Longitude	
				Start	End
Item	DWR UCIP Field Study			39.470471 °	39.470471 °
				-121.991279 °	-121.991279 °
DWR ID					
Comment Code					
Inspector Comment					
FS_ID:14686					
DS_ID:18836					
EP_NO: N/A					
Repair Type: Non-Urgent					
Crossing Status: Indicator Found					
UCIP Comments: Distribution box filled in with soil on LS toe. Need to verify proper abandonment.					
FIELD_STRUCT_DESC: *ABANDONED* 24-inch steel irrigation pipe through the levee, 10.0 feet below crown. 7-foot by 9-foot concrete distribution box at the landside (LS) toe filled in with soil (Permit No. Unknown, Year Unknown - Torres). [Additional Reference(s): DWR Levee Log, 1992]. (Note: O&M Manual references a 16-inch steel pipe at approximately this location).					
FS Date: 6/4/2013					

LM Start	7.13	Rating **	M	Issue No.	116 (cont)
LM End	7.13	Issue Type +	En	Location *	

Photo 1 of 2 : UCIP_FA_2017_14686_24184.jpg



Pump located on LS toe next to concrete distribution box.

Photo 2 of 2 : UCIP_FA_2017_14686_24183.jpg



Soil filled concrete distribution box on LS toe.

* Location LS : Land Side N/A : Not Applicable WS : Water Side CR : Crown	** Rating A : Acceptable M : Minimally Acceptable U : Unacceptable	N : Not Inspected/Rated C : Corrected A/W : Acceptable but Monitor & Maintain	+ Issue Type Ma : Maintenance Deficiency Ob : Design & System Obsolescence En : Enforcement
--	--	---	---

**Flood Control Project Maintenance
Levee Inspections**

Levee Inspection Report By Mile - Fall 2017

Levee District No. 0003 (Glenn County)

Waterway	Bank	Unit Miles	Inspection Start/End	Inspector
Unit No. 01 Glenn County Sacramento River	Left	11.97	10/26/2017 10/26/2017	Bob Duffey

LM Start	7.21	Rating **	M	Issue No.	14
LM End	7.21	Issue Type +	Ma	Location *	LS
Category	Earthen Levee			GPS Latitude/Longitude	
				Start	End
Item	Slope Stability			39.471658 °	39.471658 °
				-121.991245 °	-121.991245 °
DWR ID	DWR_LD0003_01_s_2012_14				
Comment Code					
S3 : Repair the levee slope damaged by vehicle traffic and prevent access where possible.					
Inspector Comment					

Photo 1 of 1 : FA_2017_LD0003_27_14_20170911_00012.jpg



View of the vehicle erosion along the landside slope.

LM Start	7.36	Rating **	M	Issue No.	37
LM End	7.36	Issue Type +	En	Location *	LS
Category	Earthen Levee			GPS Latitude/Longitude	
				Start	End
Item	Encroachments			39.473793 °	39.473793 °
				-121.991208 °	-121.991208 °
DWR ID	DWR_LD0003_01_s_2012_37				
Comment Code					
PR : Prunings					
Inspector Comment					
Remove the prunings from the landside slope.					

Photo 1 of 1 : FA_2017_LD0003_27_37_20170911_00020.jpg



View of the prunings along the landside slope.

LM Start	7.59	Rating **	U	Issue No.	61
LM End	7.59	Issue Type +	En	Location *	LS
Category	Earthen Levee			GPS Latitude/Longitude	
				Start	End
Item	Encroachments			39.477150 °	39.477150 °
				-121.991038 °	-121.991038 °
DWR ID	DWR_LD0003_01_f_2013_61				
Comment Code					
PR : Prunings					
Inspector Comment					
Remove the prunings from the landside toe.					

Photo 1 of 1 : FA_2017_LD0003_27_61_20170911_00040.jpg



View of the pruning along the landside toe.

* Location LS : Land Side N/A : Not Applicable WS : Water Side CR : Crown		** Rating A : Acceptable M : Minimally Acceptable U : Unacceptable		N : Not Inspected/Rated C : Corrected A/W : Acceptable but Monitor & Maintain		+ Issue Type Ma : Maintenance Deficiency Ob : Design & System Obsolescence En : Enforcement	
--	--	--	--	---	--	---	--

**Flood Control Project Maintenance
Levee Inspections**

Levee Inspection Report By Mile - Fall 2017

Levee District No. 0003 (Glenn County)

Waterway	Bank	Unit Miles	Inspection Start/End	Inspector
Unit No. 01 Glenn County Sacramento River	Left	11.97	10/26/2017 10/26/2017	Bob Duffey

LM Start	7.60	Rating **	M	Issue No.	117	
LM End	7.60	Issue Type +	En	Location *		
Category	Supplemental			GPS Latitude/Longitude		
				Start	End	
Item	DWR UCIP Field Study			39.477223 °	39.477223 °	
				-121.991021 °	-121.991021 °	
DWR ID						
Comment Code						
Inspector Comment						
FS_ID:14687						
DS_ID:18837						
EP_NO: N/A						
Repair Type: Non-Urgent						
Crossing Status: Found						
UCIP Comments: Verify pipe was abandoned properly						
FIELD_STRUCT_DESC: *ABANDONED* 18-inch steel irrigation pipe						
through the levee, 14.7 feet below the crown. Pump and pipe visible at						
edge of pond off waterside (WS) toe. (Permit No. Unknown, Year						
Unknown - Kaiser-Aetna). [Additional Reference(s): DWR Levee Log,						
1992].						
FS Date: 6/4/2013						

Photo 1 of 3 : UCIP_FA_2017_14687_24187.jpg



Pipe visible at pond off WS toe.

LM Start	7.60	Rating **	M	Issue No.	117 (cont)
LM End	7.60	Issue Type +	En	Location *	

Photo 2 of 3 : UCIP_FA_2017_14687_24186.jpg



Pump visible off WS toe, next to pond.

* Location LS : Land Side N/A : Not Applicable WS : Water Side CR : Crown		** Rating A : Acceptable M : Minimally Acceptable U : Unacceptable N : Not Inspected/Rated C : Corrected A/W : Acceptable but Monitor & Maintain		+ Issue Type Ma : Maintenance Deficiency Ob : Design & System Obsolescence En : Enforcement
--	--	---	--	---

**Flood Control Project Maintenance
Levee Inspections**

Levee Inspection Report By Mile - Fall 2017

Levee District No. 0003 (Glenn County)

Waterway	Bank	Unit Miles	Inspection Start/End	Inspector
Unit No. 01 Glenn County Sacramento River	Left	11.97	10/26/2017 10/26/2017	Bob Duffey

LM Start	7.60	Rating **	M	Issue No.	117 (cont)	
LM End	7.60	Issue Type +	En	Location *		
Category	Supplemental			GPS Latitude/Longitude		
				Start	End	
Item	DWR UCIP Field Study			39.477223 °	39.477223 °	
				-121.991021 °	-121.991021 °	
DWR ID						
Comment Code						
Inspector Comment						
FS_ID:14687						
DS_ID:18837						
EP_NO: N/A						
Repair Type: Non-Urgent						
Crossing Status: Found						
UCIP Comments: Verify pipe was abandoned properly						
FIELD_STRUCT_DESC: *ABANDONED* 18-inch steel irrigation pipe						
through the levee, 14.7 feet below the crown. Pump and pipe visible at						
edge of pond off waterside (WS) toe. (Permit No. Unknown, Year						
Unknown - Kaiser-Aetna). [Additional Reference(s): DWR Levee Log,						
1992].						
FS Date: 6/4/2013						

Photo 3 of 3 : UCIP_FA_2017_14687_24185.jpg



Remnants of concrete distribution box on LS toe.

LM Start	7.68	Rating **	M	Issue No.	60
LM End	7.68	Issue Type +	Ma	Location *	LS
Category	Earthen Levee			GPS Latitude/Longitude	
				Start	End
Item	Encroachments			39.478464 °	39.478464 °
				-121.990686 °	-121.990686 °
DWR ID	DWR_LD0003_01_f_2013_60				
Comment Code					
PR : Prunings					
Inspector Comment					
Remove the prunings from the landside toe.					

Photo 1 of 1 : FA_2017_LD0003_27_60_20170911_00039.jpg



View of the prunings along the landside toe.

* Location LS : Land Side N/A : Not Applicable WS : Water Side CR : Crown	** Rating A : Acceptable M : Minimally Acceptable U : Unacceptable	N : Not Inspected/Rated C : Corrected A/W : Acceptable but Monitor & Maintain	+ Issue Type Ma : Maintenance Deficiency Ob : Design & System Obsolescence En : Enforcement
--	--	---	---

**Flood Control Project Maintenance
Levee Inspections**

Levee Inspection Report By Mile - Fall 2017

Levee District No. 0003 (Glenn County)

Waterway	Bank	Unit Miles	Inspection Start/End	Inspector
Unit No. 01 Glenn County Sacramento River	Left	11.97	10/26/2017 10/26/2017	Bob Duffey

LM Start	9.12	Rating **	M	Issue No.	77
LM End	9.12	Issue Type +	En	Location *	LS
Category	Earthen Levee			GPS Latitude/Longitude	
				Start	End
Item	Encroachments			39.497452 °	39.497452 °
				-121.987673 °	-121.987673 °
DWR ID	DWR_LD0003_01_f_2015_77				
Comment Code					
EQ : Equipment					
Inspector Comment					
Remove the metal boxes from the landside toe.					

Photo 1 of 1 : FA_2017_LD0003_27_77_20170911_00053.jpg



View of the metal boxes along the landside toe.

LM Start	9.13	Rating **	M	Issue No.	118
LM End	9.13	Issue Type +	En	Location *	
Category	Supplemental			GPS Latitude/Longitude	
				Start	End
Item	DWR UCIP Field Study			39.497575 °	39.497575 °
				-121.987548 °	-121.987548 °
DWR ID					
Comment Code					
Inspector Comment					
FS_ID:14688 DS_ID:18838 EP_NO: 1623 Repair Type: Non-Urgent Crossing Status: Found UCIP Comments: Abandoned and should be done so properly. FIELD_STRUCT_DESC: 1.5-inch galvanized iron drinking water line through the levee, 8.0 feet below the crown. (Permit No. 1623, 1951 - Martha E. Campbell). [Additional Reference(s): DWR Levee Logs, 1992]. FS Date: 6/4/2013					

Photo 1 of 3 : UCIP_FA_2017_14688_24190.jpg



Pipe at side of building on WS shoulder.

* Location LS : Land Side N/A : Not Applicable WS : Water Side CR : Crown		** Rating A : Acceptable M : Minimally Acceptable U : Unacceptable N : Not Inspected/Rated C : Corrected A/W : Acceptable but Monitor & Maintain		+ Issue Type Ma : Maintenance Deficiency Ob : Design & System Obsolescence En : Enforcement
--	--	---	--	---

**Flood Control Project Maintenance
Levee Inspections**

Levee Inspection Report By Mile - Fall 2017

Levee District No. 0003 (Glenn County)

Waterway	Bank	Unit Miles	Inspection Start/End	Inspector
Unit No. 01 Glenn County Sacramento River	Left	11.97	10/26/2017 10/26/2017	Bob Duffey

LM Start	9.13	Rating **	M	Issue No.	118 (cont)	
LM End	9.13	Issue Type +	En	Location *		
Category	Supplemental			GPS Latitude/Longitude		
				Start	End	
Item	DWR UCIP Field Study			39.497575°	39.497575°	
				-121.987548°	-121.987548°	
DWR ID						
Comment Code						
Inspector Comment						
FS_ID:14688 DS_ID:18838 EP_NO: 1623 Repair Type: Non-Urgent Crossing Status: Found UCIP Comments: Abandoned and should be done so properly. FIELD_STRUCT_DESC: 1.5-inch galvanized iron drinking water line through the levee, 8.0 feet below the crown. (Permit No. 1623, 1951 - Martha E. Campbell). [Additional Reference(s): DWR Levee Logs, 1992]. FS Date: 6/4/2013						

Photo 2 of 3 : UCIP_FA_2017_14688_24189.jpg



Water tank, pump, and well head on LS toe.

LM Start	9.13	Rating **	M	Issue No.	118 (cont)
LM End	9.13	Issue Type +	En	Location *	

Photo 3 of 3 : UCIP_FA_2017_14688_24188.jpg



Water tank, pump, and well head on LS toe.

* Location LS : Land Side N/A : Not Applicable WS : Water Side CR : Crown	** Rating A : Acceptable M : Minimally Acceptable U : Unacceptable	N : Not Inspected/Rated C : Corrected A/W : Acceptable but Monitor & Maintain	+ Issue Type Ma : Maintenance Deficiency Ob : Design & System Obsolescence En : Enforcement
--	--	---	---

**Flood Control Project Maintenance
Levee Inspections**

Levee Inspection Report By Mile - Fall 2017

Levee District No. 0003 (Glenn County)

Waterway	Bank	Unit Miles	Inspection Start/End	Inspector
Unit No. 01 Glenn County Sacramento River	Left	11.97	10/26/2017 10/26/2017	Bob Duffey

LM Start	9.37	Rating **	M	Issue No.	85
LM End	9.62	Issue Type +	En	Location *	LS
Category	Earthen Levee			GPS Latitude/Longitude	
				Start	End
Item	Encroachments			39.500790 °	39.504310 °
				-121.985930 °	-121.984580 °
DWR ID	DWR_LD0003_01_s_2016_85				
Comment Code					
FE : Fence					
Inspector Comment					
The fence was removed from the landside toe.					

Photo 1 of 1 : FA_2017_LD0003_27_85_20171030_00108.jpg



View of the removed fence from the landside toe.

LM Start	9.50	Rating **	C	Issue No.	79
LM End	9.50	Issue Type +	Ma	Location *	LS
Category	Earthen Levee			GPS Latitude/Longitude	
				Start	End
Item	Animal Control			39.502698 °	39.502698 °
				-121.985235 °	-121.985235 °
DWR ID	DWR_LD0003_01_f_2015_79				
Comment Code					
A3 : No rodents visible, but rodent burrows visible; need to backfill and compact or grout burrows.					
Inspector Comment					
The rodent holes was repaired along the landside slope.					

No Photos

* Location LS : Land Side N/A : Not Applicable WS : Water Side CR : Crown		** Rating A : Acceptable N : Not Inspected/Rated M : Minimally Acceptable C : Corrected U : Unacceptable A/W : Acceptable but Monitor & Maintain		+ Issue Type Ma : Maintenance Deficiency Ob : Design & System Obsolescence En : Enforcement
--	--	---	--	---

**Flood Control Project Maintenance
Levee Inspections**

Levee Inspection Report By Mile - Fall 2017

Levee District No. 0003 (Glenn County)

Waterway	Bank	Unit Miles	Inspection Start/End	Inspector
Unit No. 01 Glenn County Sacramento River	Left	11.97	10/26/2017 10/26/2017	Bob Duffey

LM Start	9.61	Rating **	M	Issue No.	10
LM End	9.88	Issue Type +	Ma	Location *	WS
Category	Supplemental			GPS Latitude/Longitude	
				Start	End
Item	2015 USACE Erosion Survey, DRAFT			39.504388 °	39.508117 °
				-121.985301 °	-121.986562 °
DWR ID	DWR_LD0003_01_s_2016_10				
Comment Code					
Inspector Comment					
2007 - Getting close to the levee. Bank is clayey silt with clayey/silty toe. 2008 - Looks a little worse at the upstream end. 2009 - Some new erosion and slumping. 2010 - Some new erosion upstream of site, actively eroding at low flow. New bank swallow colony noted. 2011 - Significant erosion since last year, with an estimated 10 to 15 feet of berm lost. Large sections of the bank have slumped off. 2012 - Part of the site appears to be stabilizing, but still minor slumping in other locations. 2013 - Minor new erosion at toe. 2015: Last observed in 2013. [2015 Site ID: SAC_172-0_L] On 3/25/2016, recent high water caused river to erode to within 10-20 feet of levee toe. Appears still somewhat active.					

LM Start	9.61	Rating **	M	Issue No.	10 (cont)
LM End	9.88	Issue Type +	Ma	Location *	WS

Photo 1 of 3 : FA_2017_LD0003_27_10_20170911_00007.jpg



USACE 2013 Photo #1

Photo 2 of 3 : FA_2017_LD0003_27_10_20170911_00008.jpg



USACE 2013 Photo #2

* Location LS : Land Side N/A : Not Applicable WS : Water Side CR : Crown		** Rating A : Acceptable N : Not Inspected/Rated M : Minimally Acceptable C : Corrected U : Unacceptable A/W : Acceptable but Monitor & Maintain		+ Issue Type Ma : Maintenance Deficiency Ob : Design & System Obsolescence En : Enforcement
--	--	---	--	---

**Flood Control Project Maintenance
Levee Inspections**

Levee Inspection Report By Mile - Fall 2017

Levee District No. 0003 (Glenn County)

Waterway	Bank	Unit Miles	Inspection Start/End	Inspector
Unit No. 01 Glenn County Sacramento River	Left	11.97	10/26/2017 10/26/2017	Bob Duffey

LM Start	9.61	Rating **	M	Issue No.	10 (cont)
LM End	9.88	Issue Type +	Ma	Location *	WS
Category	Supplemental			GPS Latitude/Longitude	
				Start	End
Item	2015 USACE Erosion Survey, DRAFT			39.504388 °	39.508117 °
				-121.985301 °	-121.986562 °
DWR ID	DWR_LD0003_01_s_2016_10				
Comment Code					
Inspector Comment					
2007 - Getting close to the levee. Bank is clayey silt with clayey/silty toe. 2008 - Looks a little worse at the upstream end. 2009 - Some new erosion and slumping. 2010 - Some new erosion upstream of site, actively eroding at low flow. New bank swallow colony noted. 2011 - Significant erosion since last year, with an estimated 10 to 15 feet of berm lost. Large sections of the bank have slumped off. 2012 - Part of the site appears to be stabilizing, but still minor slumping in other locations. 2013 - Minor new erosion at toe. 2015: Last observed in 2013. [2015 Site ID: SAC_172-0_L] On 3/25/2016, recent high water caused river to erode to within 10-20 feet of levee toe. Appears still somewhat active.					

Photo 3 of 3 : FA_2017_LD0003_27_10_20170911_00009.jpg



USACE 2013 Photo #3

LM Start	9.63	Rating **	M	Issue No.	86
LM End	10.11	Issue Type +	En	Location *	LS
Category	Earthen Levee			GPS Latitude/Longitude	
				Start	End
Item	Encroachments			39.504420 °	39.511450 °
				-121.984510 °	-121.983930 °
DWR ID	DWR_LD0003_01_s_2016_86				
Comment Code					
FE : Fence					
Inspector Comment					
Wire mesh and T-post fence obstructing access to landside toe.					

No Photos

* Location LS : Land Side N/A : Not Applicable WS : Water Side CR : Crown		** Rating A : Acceptable N : Not Inspected/Rated M : Minimally Acceptable C : Corrected U : Unacceptable A/W : Acceptable but Monitor & Maintain		+ Issue Type Ma : Maintenance Deficiency Ob : Design & System Obsolescence En : Enforcement
--	--	---	--	---

**Flood Control Project Maintenance
Levee Inspections**

Levee Inspection Report By Mile - Fall 2017

Levee District No. 0003 (Glenn County)

Waterway	Bank	Unit Miles	Inspection Start/End	Inspector
Unit No. 01 Glenn County Sacramento River	Left	11.97	10/26/2017 10/26/2017	Bob Duffey

LM Start	9.70	Rating **	U	Issue No.	50
LM End	9.70	Issue Type +	Ma	Location *	WS
Category	Earthen Levee			GPS Latitude/Longitude	
				Start	End
Item	Erosion / Bank Caving			39.505435 °	39.505435 °
				-121.984172 °	-121.984172 °
DWR ID	DWR_LD0003_01_f_2014_50				
Comment Code					
E2 : Schedule repair of erosion site prior to the next inspection.					
Inspector Comment					
Repair the erosion along the waterside toe. On 3/25/2016, recent high water caused river to erode to within 10-20 feet of levee toe. Appears still somewhat active.					

Photo 1 of 6 : FA_2017_LD0003_27_50_20170911_00028.jpg



View of the erosion along the waterside toe. Same site as the USACE erosion issue. Photo: 10/20/2016

LM Start	9.70	Rating **	U	Issue No.	50 (cont)
LM End	9.70	Issue Type +	Ma	Location *	WS

Photo 2 of 6 : FA_2017_LD0003_27_50_20170911_00029.jpg



View of the erosion along the waterside toe. Same site as the USACE erosion issue.

LM Start	9.70	Rating **	U	Issue No.	50 (cont)
LM End	9.70	Issue Type +	Ma	Location *	WS

Photo 3 of 6 : FA_2017_LD0003_27_50_20170911_00030.jpg



View of erosion along the waterside toe. Same site as the USACE erosion issue. Photo 3/25/2016

* Location LS : Land Side N/A : Not Applicable WS : Water Side CR : Crown		** Rating A : Acceptable M : Minimally Acceptable U : Unacceptable N : Not Inspected/Rated C : Corrected A/W : Acceptable but Monitor & Maintain		+ Issue Type Ma : Maintenance Deficiency Ob : Design & System Obsolescence En : Enforcement	
---	--	--	--	--	--

**Flood Control Project Maintenance
Levee Inspections**

Levee Inspection Report By Mile - Fall 2017

Levee District No. 0003 (Glenn County)

Waterway	Bank	Unit Miles	Inspection Start/End	Inspector
Unit No. 01 Glenn County Sacramento River	Left	11.97	10/26/2017 10/26/2017	Bob Duffey

LM Start	9.70	Rating **	U	Issue No.	50 (cont)	
LM End	9.70	Issue Type +	Ma	Location *	WS	
Category	Earthen Levee			GPS Latitude/Longitude		
				Start		End
Item	Erosion / Bank Caving			39.505435 °		39.505435 °
				-121.984172 °		-121.984172 °
DWR ID	DWR_LD0003_01_f_2014_50					
Comment Code						
E2 : Schedule repair of erosion site prior to the next inspection.						
Inspector Comment						
Repair the erosion along the waterside toe. On 3/25/2016, recent high water caused river to erode to within 10-20 feet of levee toe. Appears still somewhat active.						

Photo 4 of 6 : FA_2017_LD0003_27_50_20170911_00031.jpg



View of erosion along the waterside toe, downstream. Same site as the USACE erosion issue. Photo 3/25/2016

LM Start	9.70	Rating **	U	Issue No.	50 (cont)
LM End	9.70	Issue Type +	Ma	Location *	WS

Photo 5 of 6 : FA_2017_LD0003_27_50_20170911_00032.jpg



View of erosion along the waterside toe. Same site as the USACE erosion issue.

LM Start	9.70	Rating **	U	Issue No.	50 (cont)
LM End	9.70	Issue Type +	Ma	Location *	WS

Photo 6 of 6 : FA_2017_LD0003_27_50_20170911_00033.jpg



View of the erosion along the waterside toe. Same site as the USACE erosion issue.

* Location LS : Land Side N/A : Not Applicable WS : Water Side CR : Crown		** Rating A : Acceptable M : Minimally Acceptable U : Unacceptable N : Not Inspected/Rated C : Corrected A/W : Acceptable but Monitor & Maintain		+ Issue Type Ma : Maintenance Deficiency Ob : Design & System Obsolescence En : Enforcement	
---	--	--	--	--	--

**Flood Control Project Maintenance
Levee Inspections**

Levee Inspection Report By Mile - Fall 2017

Levee District No. 0003 (Glenn County)

Waterway	Bank	Unit Miles	Inspection Start/End	Inspector
Unit No. 01 Glenn County Sacramento River	Left	11.97	10/26/2017 10/26/2017	Bob Duffey

LM Start	9.94	Rating **	M	Issue No.	93
LM End	10.03	Issue Type +	Ma	Location *	WS
Category	Earthen Levee			GPS Latitude/Longitude	
				Start	End
Item	Animal Control			39.508912 °	39.510199 °
				-121.983989 °	-121.983912 °
DWR ID	DWR_LD0003_01_f_2016_93				
Comment Code					
A1 : Exterminate rodents and backfill and compact or grout burrows.					
Inspector Comment					

Photo 1 of 1 : FA_2017_LD0003_27_93_20170911_00058.jpg



View of the rodent holes along the waterside slope.

LM Start	10.14	Rating **	M	Issue No.	5
LM End	10.24	Issue Type +	Ma	Location *	WS
Category	Earthen Levee			GPS Latitude/Longitude	
				Start	End
Item	Trim / Thin Trees			39.511788 °	39.512395 °
				-121.983750 °	-121.981975 °
DWR ID	DWR_LD0003_01_s_2012_5				
Comment Code					
T2 : Thin trees to allow visibility of the ground and room to flood fight.					
Inspector Comment					

Photo 1 of 1 : FA_2017_LD0003_27_5_20170911_00003.jpg



View of the dense vegetation along the waterside slope.

LM Start	10.22	Rating **	N	Issue No.	92
LM End	10.22	Issue Type +	Ma	Location *	WS
Category	Earthen Levee			GPS Latitude/Longitude	
				Start	End
Item	Trim / Thin Trees			39.512287 °	39.512287 °
				-121.982410 °	-121.982410 °
DWR ID	DWR_LD0003_01_f_2016_92				
Comment Code					
T5 : Tree stumps.					
Inspector Comment					

No Photos

* Location LS : Land Side N/A : Not Applicable WS : Water Side CR : Crown		** Rating A : Acceptable M : Minimally Acceptable U : Unacceptable N : Not Inspected/Rated C : Corrected A/W : Acceptable but Monitor & Maintain		+ Issue Type Ma : Maintenance Deficiency Ob : Design & System Obsolescence En : Enforcement	
---	--	--	--	--	--

**Flood Control Project Maintenance
Levee Inspections**

Levee Inspection Report By Mile - Fall 2017

Levee District No. 0003 (Glenn County)

Waterway	Bank	Unit Miles	Inspection Start/End	Inspector
Unit No. 01 Glenn County Sacramento River	Left	11.97	10/26/2017 10/26/2017	Bob Duffey

LM Start	10.24	Rating **	M	Issue No.	119	
LM End	10.24	Issue Type +	En	Location *		
Category	Supplemental			GPS Latitude/Longitude		
				Start		End
Item	DWR UCIP Field Study			39.512394 °		39.512394 °
				-121.982101 °		-121.982101 °
DWR ID						
Comment Code						
Inspector Comment						
FS_ID:14689 DS_ID:18840 EP_NO: 1063 Repair Type: Non-Urgent Crossing Status: Found UCIP Comments: Verify pipe was abandoned properly. (no photos taken) FIELD_STRUCT_DESC: *ABANDONED* 14-inch reinforced concrete irrigation pipe through the levee, 8.5 feet below the crown. Slide gate inside a 36-inch concrete riser unit on the waterside (WS) toe (Permit No. 1063, 1945 - Thomas McCormack). [Additional Reference(s): DWR Levee Log, 1992]. FS Date: 6/4/2013						

No Photos

LM Start	10.49	Rating **	U	Issue No.	91
LM End	10.49	Issue Type +	En	Location *	LS
Category	Earthen Levee			GPS Latitude/Longitude	
				Start	End
Item	Encroachments			39.515145 °	39.515145 °
				-121.979266 °	-121.979266 °
DWR ID	DWR_LD0003_01_f_2016_91				
Comment Code					
DE : Debris					
Inspector Comment					
Move the pipes at least 10' out from the levee toe.					

Photo 1 of 1 : FA_2017_LD0003_27_91_20170911_00057.jpg



View of the polyethylene pipes along the landside toe.

* Location LS : Land Side N/A : Not Applicable WS : Water Side CR : Crown		** Rating A : Acceptable N : Not Inspected/Rated M : Minimally Acceptable C : Corrected U : Unacceptable A/W : Acceptable but Monitor & Maintain		+ Issue Type Ma : Maintenance Deficiency Ob : Design & System Obsolescence En : Enforcement
--	--	---	--	---

**Flood Control Project Maintenance
Levee Inspections**

Levee Inspection Report By Mile - Fall 2017

Levee District No. 0003 (Glenn County)

Waterway	Bank	Unit Miles	Inspection Start/End	Inspector
Unit No. 01 Glenn County Sacramento River	Left	11.97	10/26/2017 10/26/2017	Bob Duffey

LM Start	10.50	Rating **	N	Issue No.	29	
LM End	10.50	Issue Type +	Ma	Location *	WS	
Category	Earthen Levee			GPS Latitude/Longitude		
				Start		End
Item	Trim / Thin Trees			39.515342 °		39.515342 °
				-121.979202 °		-121.979202 °
DWR ID	DWR_LD0003_01_s_2012_29					
Comment Code						
T5 : Tree stumps.						
Inspector Comment						

Photo 1 of 1 : FA_2017_LD0003_27_29_20170911_00016.jpg



View of the stump along the toe.

LM Start	10.66	Rating **	U	Issue No.	89
LM End	10.66	Issue Type +	Ma	Location *	WS
Category	Earthen Levee			GPS Latitude/Longitude	
				Start	End
Item	Slope Stability			39.517553 °	39.517553 °
				-121.979132 °	-121.979132 °
DWR ID	DWR_LD0003_01_f_2016_89				
Comment Code					
S1 : Repair slope instability.					
Inspector Comment					

Photo 1 of 1 : FA_2017_LD0003_27_89_20170911_00056.jpg



View of a hole along the waterside slope that need to be backfilled and compacted.

LM Start	10.67	Rating **	N	Issue No.	30
LM End	10.67	Issue Type +	Ma	Location *	WS
Category	Earthen Levee			GPS Latitude/Longitude	
				Start	End
Item	Trim / Thin Trees			39.517715 °	39.517715 °
				-121.979155 °	-121.979155 °
DWR ID	DWR_LD0003_01_f_2016_30				
Comment Code					
T5 : Tree stumps.					
Inspector Comment					

Photo 1 of 1 : FA_2017_LD0003_27_30_20170911_00017.jpg



View of the stump along the slope.

* Location LS : Land Side N/A : Not Applicable WS : Water Side CR : Crown		** Rating A : Acceptable M : Minimally Acceptable U : Unacceptable		N : Not Inspected/Rated C : Corrected A/W : Acceptable but Monitor & Maintain		+ Issue Type Ma : Maintenance Deficiency Ob : Design & System Obsolescence En : Enforcement	
---	--	---	--	---	--	--	--

**Flood Control Project Maintenance
Levee Inspections**

Levee Inspection Report By Mile - Fall 2017

Levee District No. 0003 (Glenn County)

Waterway	Bank	Unit Miles	Inspection Start/End	Inspector
Unit No. 01 Glenn County Sacramento River	Left	11.97	10/26/2017 10/26/2017	Bob Duffey

LM Start	10.81	Rating **	N	Issue No.	82
LM End	10.81	Issue Type +	Ma	Location *	WS
Category	Earthen Levee			GPS Latitude/Longitude	
				Start	End
Item	Trim / Thin Trees			39.519727 °	39.519727 °
				-121.978362 °	-121.978362 °
DWR ID	DWR_LD0003_01_f_2015_82				
Comment Code					
T5 : Tree stumps.					
Inspector Comment					

No Photos

LM Start	10.96	Rating **	M	Issue No.	120
LM End	10.96	Issue Type +	En	Location *	
Category	Supplemental			GPS Latitude/Longitude	
				Start	End
Item	DWR UCIP Field Study			39.521780 °	39.521780 °
				-121.979014 °	-121.979014 °
DWR ID					
Comment Code					
Inspector Comment					
FS_ID:14690 DS_ID:18832 EP_NO: 3193 Repair Type: Non-Urgent Crossing Status: Found UCIP Comments: Pipe appears abandoned and should be done so properly. FIELD_STRUCT_DESC: 10-inch steel irrigation pipe through levee at crown elevation. 5.5-inch pipe extended out on waterside (WS) end, supplying water tanks at landward toe. Discharges into metal tank covered at landward toe. Pump and meter on landward side. (Permit No. 3193, Year Unknown - Romaine Southam, design drawings available in permit). [Additional Reference(s): DWR Levee Log, 1992]. FS Date: 6/4/2013					

Photo 1 of 3 : UCIP_FA_2017_14690_24193.jpg



10-inch pipe and pump on LS.

* Location LS : Land Side N/A : Not Applicable WS : Water Side CR : Crown		** Rating A : Acceptable M : Minimally Acceptable U : Unacceptable N : Not Inspected/Rated C : Corrected A/W : Acceptable but Monitor & Maintain		+ Issue Type Ma : Maintenance Deficiency Ob : Design & System Obsolescence En : Enforcement
--	--	---	--	---

**Flood Control Project Maintenance
Levee Inspections**

Levee Inspection Report By Mile - Fall 2017

Levee District No. 0003 (Glenn County)

Waterway	Bank	Unit Miles	Inspection Start/End	Inspector
Unit No. 01 Glenn County Sacramento River	Left	11.97	10/26/2017 10/26/2017	Bob Duffey

LM Start	10.96	Rating **	M	Issue No.	120 (cont)	
LM End	10.96	Issue Type +	En	Location *		
Category	Supplemental			GPS Latitude/Longitude		
				Start		End
Item	DWR UCIP Field Study			39.521780 °		39.521780 °
				-121.979014 °		-121.979014 °
DWR ID						
Comment Code						
Inspector Comment						
FS_ID:14690 DS_ID:18832 EP_NO: 3193 Repair Type: Non-Urgent Crossing Status: Found UCIP Comments: Pipe appears abandoned and should be done so properly. FIELD_STRUCT_DESC: 10-inch steel irrigation pipe through levee at crown elevation. 5.5-inch pipe extended out on waterside (WS) end, supplying water tanks at landward toe. Discharges into metal tank covered at landward toe. Pump and meter on landward side. (Permit No. 3193, Year Unknown - Romaine Southam, design drawings available in permit). [Additional Reference(s): DWR Levee Log, 1992]. FS Date: 6/4/2013						

Photo 2 of 3 : UCIP_FA_2017_14690_24192.jpg



Pipe on WS shoulder.

LM Start	10.96	Rating **	M	Issue No.	120 (cont)
LM End	10.96	Issue Type +	En	Location *	

Photo 3 of 3 : UCIP_FA_2017_14690_24191.jpg



10-inch pipe on LS.

* Location LS : Land Side N/A : Not Applicable WS : Water Side CR : Crown		** Rating A : Acceptable M : Minimally Acceptable U : Unacceptable N : Not Inspected/Rated C : Corrected A/W : Acceptable but Monitor & Maintain		+ Issue Type Ma : Maintenance Deficiency Ob : Design & System Obsolescence En : Enforcement
--	--	---	--	---

**Flood Control Project Maintenance
Levee Inspections**

Levee Inspection Report By Mile - Fall 2017

Levee District No. 0003 (Glenn County)

Waterway	Bank	Unit Miles	Inspection Start/End	Inspector
Unit No. 01 Glenn County Sacramento River	Left	11.97	10/26/2017 10/26/2017	Bob Duffey

LM Start	10.98	Rating **	U	Issue No.	4
LM End	11.01	Issue Type +	En	Location *	LS
Category	Earthen Levee			GPS Latitude/Longitude	
				Start	End
Item	Vegetation			39.522058 °	39.522480 °
				-121.979133 °	-121.979200 °
DWR ID	DWR_LD0003_01_s_2012_4				
Comment Code					
V6 : Landscaping					
Inspector Comment					

Photo 1 of 1 : FA_2017_LD0003_27_4_20170911_00002.jpg



View of the trees along the landside slope.

LM Start	11.02	Rating **	N	Issue No.	80
LM End	11.02	Issue Type +	Ma	Location *	LS
Category	Earthen Levee			GPS Latitude/Longitude	
				Start	End
Item	Trim / Thin Trees			39.522583 °	39.522583 °
				-121.979249 °	-121.979249 °
DWR ID	DWR_LD0003_01_f_2016_80				
Comment Code					
T5 : Tree stumps.					
Inspector Comment					
2 tree stumps on the landside toe.					

No Photos

LM Start	11.04	Rating **	M	Issue No.	6
LM End	11.04	Issue Type +	Ma	Location *	WS
Category	Earthen Levee			GPS Latitude/Longitude	
				Start	End
Item	Slope Stability			39.522921 °	39.522921 °
				-121.979172 °	-121.979172 °
DWR ID	DWR_LD0003_01_f_2012_6				
Comment Code					
S1 : Repair slope instability.					
Inspector Comment					

Photo 1 of 1 : FA_2017_LD0003_27_6_20170911_00004.jpg



View of the vertical cut along the waterside toe.

* Location LS : Land Side N/A : Not Applicable WS : Water Side CR : Crown		** Rating A : Acceptable M : Minimally Acceptable U : Unacceptable N : Not Inspected/Rated C : Corrected A/W : Acceptable but Monitor & Maintain		+ Issue Type Ma : Maintenance Deficiency Ob : Design & System Obsolescence En : Enforcement	
--	--	---	--	---	--