

**Flood Control Project Maintenance
Levee Inspections**

Maintenance Issue Types Only, Levee Inspection Report By Mile - Fall 2024

Levee District No. 0002 (Glenn County)

Waterway	Bank	Unit Miles	Inspection Start/End	Inspector
Unit No. 01 Glenn County Sacramento River	Right	4.90	09/25/2024 09/25/2024	Makar Sokol

LM Start		Rating **	A	Issue No.	14
LM End		Issue Type +	Ma	Location *	
Category	Earthen Levee		GPS Latitude/Longitude		
			Start	End	
Item	Operations & Maintenance Manuals				
DWR ID	DWR_LD0002_01_s _ 2013_14				
Comment Code					
OM : O&M Manuals					
Inspector Comment					
The LMA has copies of the O&M manuals.					

No Photos

LM Start		Rating **	A	Issue No.	17
LM End		Issue Type +	Ma	Location *	
Category	Earthen Levee		GPS Latitude/Longitude		
			Start	End	
Item	Emergency Supplies & Equipment				
DWR ID	DWR_LD0002_01_s _ 2013_17				
Comment Code					
ES : Emergency Supplies & Equipment					
Inspector Comment					
The LMA has adequate flood fight supplies and equipment.					

No Photos

LM Start		Rating **	M	Issue No.	18
LM End		Issue Type +	Ma	Location *	
Category	Earthen Levee		GPS Latitude/Longitude		
			Start	End	
Item	Flood Preparedness & Training				
DWR ID	DWR_LD0002_01_s _ 2013_18				
Comment Code					
FP : Flood Preparedness & Training					
Inspector Comment					
Recommended to take a flood fight training.					

No Photos

* Location LS : Land Side N/A : Not Applicable WS : Water Side CR : Crown	** Rating A : Acceptable M : Minimally Acceptable U : Unacceptable	N : Not Inspected/Rated C : Corrected A/W : Acceptable but Monitor & Maintain	+ Issue Type Ma : Maintenance Deficiency Ob : Design & System Obsolescence En : Enforcement
----------------------------------------------------------------------------------------------	------------------------------------------------------------------------------------	-------------------------------------------------------------------------------------	-------------------------------------------------------------------------------------------------------------

**Flood Control Project Maintenance
Levee Inspections****Maintenance Issue Types Only, Levee Inspection Report By Mile - Fall 2024****Levee District No. 0002 (Glenn County)**

Waterway	Bank	Unit Miles	Inspection Start/End	Inspector
Unit No. 01 Glenn County Sacramento River	Right	4.90	09/25/2024 09/25/2024	Makar Sokol

LM Start	0.07	Rating **	M	Issue No.	6
LM End	0.28	Issue Type +	Ma	Location *	WS
Category	Supplemental			GPS Latitude/Longitude	
				Start	End
Item	2018 USACE Erosion Survey			39.414649°	39.417689°
				-122.009853°	-122.010369°
DWR ID	DWR_LD0002_01_s_2022_6				
Comment Code					
Inspector Comment					
2018 Site ID: SAC 164.7 R					
Status: Eroding					
2018 Field Notes: No observed change.					
Site History: 2009 - Very slow retreat, hard toe, encroaching into the levee projection. 2010 - Slowly eroding. 2011 - Site extended downstream. 2017 - New erosion along entire site.					

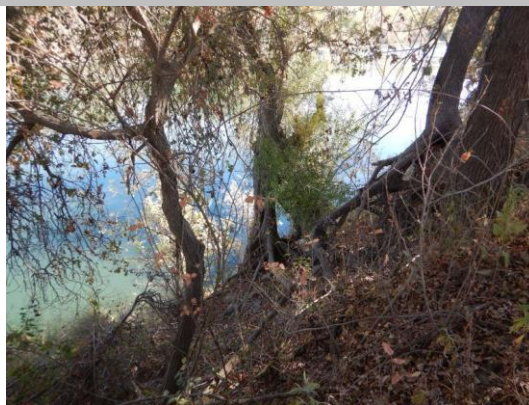
Photo 1 of 2 : FA_2024_LD0002_28_6_20240924_00002.jpg



USACE 2018 Erosion Photo #1

LM Start	0.07	Rating **	M	Issue No.	6 (cont)
LM End	0.28	Issue Type +	Ma	Location *	WS

Photo 2 of 2 : FA_2024_LD0002_28_6_20240924_00003.jpg



USACE 2018 Erosion Photo #2

LM Start	0.64	Rating **	M	Issue No.	35
LM End	0.77	Issue Type +	Ma	Location *	WS
Category	Earthen Levee			GPS Latitude/Longitude	
				Start	End
Item	Vegetation			39.422805°	39.424597°
				-122.011640°	-122.011527°
DWR ID	DWR_LD0002_01_s_2018_35				
Comment Code					
V2 : Remove the wild growth and woody vegetation other than native grasses from the levee slopes.					
Inspector Comment					

Photo 1 of 1 : FA_2024_LD0002_28_35_20240924_00012.jpg



View of the wild growth along the waterside slope. Fall 2022.

* Location	** Rating	+ Issue Type
LS : Land Side WS : Water Side CR : Crown	A : Acceptable M : Minimally Acceptable U : Unacceptable	Ma : Maintenance Deficiency Ob : Design & System Obsolescence En : Enforcement
N/A : Not Applicable	N : Not Inspected/Rated C : Corrected A/W : Acceptable but Monitor & Maintain	

**Flood Control Project Maintenance
Levee Inspections****Maintenance Issue Types Only, Levee Inspection Report By Mile - Fall 2024****Levee District No. 0002 (Glenn County)**

Waterway	Bank	Unit Miles	Inspection Start/End	Inspector
Unit No. 01 Glenn County Sacramento River	Right	4.90	09/25/2024 09/25/2024	Makar Sokol

LM Start	1.19	Rating **	M	Issue No.	9
LM End	1.97	Issue Type +	Ma	Location *	LS
Category	Earthen Levee			GPS Latitude/Longitude	
				Start	End
Item	Vegetation			39.430783°	39.441432°
				-122.010747°	-122.012150°
DWR ID	DWR_LD0002_01_f_2024_9				
Comment Code					
V1 : Control annual grass and weeds on the levee slopes and easements.					
Inspector Comment					

Photo 1 of 1 : FA_2024_LD0002_28_9_20241001_00027.jpg



View of the vegetation along the landside slope. Fall 2024.

LM Start	1.20	Rating **	M	Issue No.	10
LM End	1.97	Issue Type +	Ma	Location *	WS
Category	Earthen Levee			GPS Latitude/Longitude	
				Start	End
Item	Vegetation			39.430798°	39.441432°
				-122.010760°	-122.012150°
DWR ID	DWR_LD0002_01_f_2024_10				
Comment Code					
V1 : Control annual grass and weeds on the levee slopes and easements.					
Inspector Comment					

No Photos

LM Start	1.25	Rating **	N	Issue No.	31
LM End	1.25	Issue Type +	Ma	Location *	WS
Category	Earthen Levee			GPS Latitude/Longitude	
				Start	End
Item	Trim / Thin Trees			39.431524°	39.431524°
				-122.010790°	-122.010790°
DWR ID	DWR_LD0002_01_s_2019_31				
Comment Code					
T5 : Tree stumps.					
Inspector Comment					

No Photos

* Location LS : Land Side N/A : Not Applicable WS : Water Side CR : Crown		** Rating A : Acceptable M : Minimally Acceptable U : Unacceptable N : Not Inspected/Rated C : Corrected A/W : Acceptable but Monitor & Maintain		+ Issue Type Ma : Maintenance Deficiency Ob : Design & System Obsolescence En : Enforcement	
----------------------------------------------------------------------------------------------	--	---------------------------------------------------------------------------------------------------------------------------------------------------------------------------	--	-------------------------------------------------------------------------------------------------------------	--

**Flood Control Project Maintenance
Levee Inspections****Maintenance Issue Types Only, Levee Inspection Report By Mile - Fall 2024****Levee District No. 0002 (Glenn County)**

Waterway	Bank	Unit Miles	Inspection Start/End	Inspector
Unit No. 01 Glenn County Sacramento River	Right	4.90	09/25/2024 09/25/2024	Makar Sokol

LM Start	1.35	Rating **	C	Issue No.	22
LM End	1.35	Issue Type +	Ma	Location *	CR
Category	Earthen Levee			GPS Latitude/Longitude	
				Start	End
Item	Crown Surface / Depressions / Rutting			39.433090°	39.433090°
				-122.010854°	-122.010854°
DWR ID	DWR_LD0002_01_s_2024_22				
Comment Code					
C2 : Repair depressions or ruts in the crown or slope.					
Inspector Comment					

No Photos

LM Start	1.40	Rating **	C	Issue No.	34
LM End	1.40	Issue Type +	Ma	Location *	CR
Category	Earthen Levee			GPS Latitude/Longitude	
				Start	End
Item	Crown Surface / Depressions / Rutting			39.433809°	39.433809°
				-122.010814°	-122.010814°
DWR ID	DWR_LD0002_01_f_2016_34				
Comment Code					
C2 : Repair depressions or ruts in the crown or slope.					
Inspector Comment					

No Photos

LM Start	1.45	Rating **	C	Issue No.	8
LM End	1.45	Issue Type +	Ma	Location *	CR
Category	Earthen Levee			GPS Latitude/Longitude	
				Start	End
Item	Crown Surface / Depressions / Rutting			39.434459°	39.434459°
				-122.010730°	-122.010730°
DWR ID	DWR_LD0002_01_f_2023_8				
Comment Code					
C2 : Repair depressions or ruts in the crown or slope.					
Inspector Comment					

No Photos

* Location LS : Land Side N/A : Not Applicable WS : Water Side CR : Crown	** Rating A : Acceptable M : Minimally Acceptable U : Unacceptable	N : Not Inspected/Rated C : Corrected A/W : Acceptable but Monitor & Maintain	+ Issue Type Ma : Maintenance Deficiency Ob : Design & System Obsolescence En : Enforcement
----------------------------------------------------------------------------------------------	------------------------------------------------------------------------------------	--------------------------------------------------------------------------------------------	-------------------------------------------------------------------------------------------------------------

**Flood Control Project Maintenance
Levee Inspections****Maintenance Issue Types Only, Levee Inspection Report By Mile - Fall 2024****Levee District No. 0002 (Glenn County)**

Waterway	Bank	Unit Miles	Inspection Start/End	Inspector
Unit No. 01 Glenn County Sacramento River	Right	4.90	09/25/2024 09/25/2024	Makar Sokol

LM Start	1.50	Rating **	C	Issue No.	26							
LM End	1.50	Issue Type +	Ma	Location *	CR							
Category	Earthen Levee		GPS Latitude/Longitude									
			Start	End								
Item	Crown Surface / Depressions / Rutting		39.435240°	39.435240°								
			-122.010622°	-122.010622°								
DWR ID	DWR_LD0002_01_s_2024_26											
Comment Code												
C2 : Repair depressions or ruts in the crown or slope.												
Inspector Comment												

No Photos

LM Start	1.54	Rating **	U	Issue No.	15							
LM End	1.60	Issue Type +	Ma	Location *	LS							
Category	Earthen Levee		GPS Latitude/Longitude									
			Start	End								
Item	Animal Control		39.435730°	39.436643°								
			-122.010565°	-122.010498°								
DWR ID	DWR_LD0002_01_f_2012_15											
Comment Code												
A3 : No rodents visible, but rodent burrows visible; need to backfill and compact or grout burrows.												
Inspector Comment												

Photo 1 of 1 : FA_2024_LD0002_28_15_20240924_00005.jpg



View of the rodent activity along the landside slope. Fall 2022.

LM Start	1.63	Rating **	C	Issue No.	28							
LM End	1.63	Issue Type +	Ma	Location *	CR							
Category	Earthen Levee		GPS Latitude/Longitude									
			Start	End								
Item	Crown Surface / Depressions / Rutting		39.437032°	39.437032°								
			-122.010473°	-122.010473°								
DWR ID	DWR_LD0002_01_s_2024_28											
Comment Code												
C2 : Repair depressions or ruts in the crown or slope.												
Inspector Comment												

No Photos

* Location	** Rating	+ Issue Type
LS : Land Side WS : Water Side CR : Crown	A : Acceptable M : Minimally Acceptable U : Unacceptable	Ma : Maintenance Deficiency Ob : Design & System Obsolescence En : Enforcement
N : Not Inspected/Rated C : Corrected A/W : Acceptable but Monitor & Maintain		

**Flood Control Project Maintenance
Levee Inspections****Maintenance Issue Types Only, Levee Inspection Report By Mile - Fall 2024****Levee District No. 0002 (Glenn County)**

Waterway	Bank	Unit Miles	Inspection Start/End	Inspector
Unit No. 01 Glenn County Sacramento River	Right	4.90	09/25/2024 09/25/2024	Makar Sokol

LM Start	1.67	Rating **	C	Issue No.	29
LM End	1.67	Issue Type +	Ma	Location *	CR
Category	Earthen Levee			GPS Latitude/Longitude	
				Start	End
Item	Crown Surface / Depressions / Rutting			39.437633°	39.437633°
				-122.010422°	-122.010422°
DWR ID	DWR_LD0002_01_s_2024_29				
Comment Code					
C2 : Repair depressions or ruts in the crown or slope.					
Inspector Comment					

No Photos

LM Start	1.84	Rating **	M	Issue No.	56	
LM End	1.84	Issue Type +	Ma	Location *		
Category	Supplemental			GPS Latitude/Longitude		
				Start		End
Item	DWR UCIP LMA Responsibility			39.440041°		39.440041°
				-122.010524°		-122.010524°
DWR ID	21172					
Comment Code						
Inspector Comment						
DS_ID:21172 FS_ID:82099 EP_NO: N/A Repair Type: Non-Urgent EVAL Issue: Crossing Status: Not Found UCIP Comments: 01/11/2024 After detail review updated crossing location according to the Levee Log. Geophysical study of pipe DSID 21173 indicates possible presence of pipe through levee at this location, coordinates updated. Owner needs to coordinate with the CVFPB to remove or abandon crossing according to Title 23 requirements. Photos were taken at incorrect location. (O. Yakimov - DWR UCIP) 03/29/2022 Record updated from No Action Needed to Non-Urgent. Crossing not found. Unauthorized encroachment recorded in Levee Log. (O.Yakimov - DWR UCIP) FIELD_STRUCT_DESC: 4-inch steel drainage pipe through the levee, 5.3 feet below the crown. No control valves. Pipe open on waterside (WS) end. Pump and pipe in concrete box (1x10-foot) and pit at the landside (LS) toe. [Additional Reference(s): DWR Levee Log, 2005 (HLM 1.86), listed as abandoned 4-inch pipe. USACE Sacramento O&M Manual, Unit 139, May 1955, Revised 29 December 2016, (STA 82+50), listed as 4-inch pipe]. FS Date: 3/29/2022 3:00:18 PM						

Photo 1 of 3 : UCIP_FA_2024_82099_113805.jpg



Top of Levee: View of levee crown looking downstream

* Location	** Rating	+ Issue Type
LS : Land Side WS : Water Side CR : Crown	A : Acceptable M : Minimally Acceptable U : Unacceptable	Ma : Maintenance Deficiency Ob : Design & System Obsolescence En : Enforcement
	N : Not Inspected/Rated C : Corrected A/W : Acceptable but Monitor & Maintain	

**Flood Control Project Maintenance
Levee Inspections**

Maintenance Issue Types Only, Levee Inspection Report By Mile - Fall 2024

Levee District No. 0002 (Glenn County)

Waterway	Bank	Unit Miles	Inspection Start/End	Inspector
Unit No. 01 Glenn County Sacramento River	Right	4.90	09/25/2024 09/25/2024	Makar Sokol

LM Start	1.84	Rating **	M	Issue No.	56 (cont)
LM End	1.84	Issue Type +	Ma	Location *	
Category	Supplemental		GPS Latitude/Longitude		
			Start	End	
Item	DWR UCIP LMA Responsibility		39.440041°	39.440041°	
			-122.010524°	-122.010524°	
DWR ID	21172				

Photo 2 of 3 : UCIP_FA_2024_82099_113804.jpg



Water-Side: View of levee slope looking from crown

LM Start	1.84	Rating **	M	Issue No.	56 (cont)
LM End	1.84	Issue Type +	Ma	Location *	

Photo 3 of 3 : UCIP_FA_2024_82099_113803.jpg



Land-Side: View of levee slope looking from crown

LM Start	1.87	Rating **	C	Issue No.	32
LM End	1.87	Issue Type +	Ma	Location *	CR
Category	Earthen Levee			GPS Latitude/Longitude	
				Start	End
Item	Crown Surface / Depressions / Rutting			39.440364°	39.440364°
				-122.010879°	-122.010879°
DWR ID	DWR_LD0002_01_s_2024_32				
Comment Code					
C2 : Repair depressions or ruts in the crown or slope.					
Inspector Comment					

No Photos

* Location LS : Land Side N/A : Not Applicable WS : Water Side CR : Crown		** Rating A : Acceptable M : Minimally Acceptable U : Unacceptable N : Not Inspected/Rated C : Corrected A/W : Acceptable but Monitor & Maintain		+ Issue Type Ma : Maintenance Deficiency Ob : Design & System Obsolescence En : Enforcement
----------------------------------------------------------------------------------------------	--	---------------------------------------------------------------------------------------------------------------------------------------------------------------------------	--	-------------------------------------------------------------------------------------------------------------

**Flood Control Project Maintenance
Levee Inspections****Maintenance Issue Types Only, Levee Inspection Report By Mile - Fall 2024****Levee District No. 0002 (Glenn County)**

Waterway	Bank	Unit Miles	Inspection Start/End	Inspector
Unit No. 01 Glenn County Sacramento River	Right	4.90	09/25/2024 09/25/2024	Makar Sokol

LM Start	2.01	Rating **	N	Issue No.	41
LM End	2.01	Issue Type +	Ma	Location *	WS
Category	Earthen Levee			GPS Latitude/Longitude	
				Start	End
Item	Trim / Thin Trees			39.441698°	39.441698°
				-122.012794°	-122.012794°
DWR ID	DWR_LD0002_01_s_2019_41				
Comment Code					
T5 : Tree stumps.					
Inspector Comment					

No Photos

LM Start	2.72	Rating **	M	Issue No.	11
LM End	3.12	Issue Type +	Ma	Location *	LS
Category	Earthen Levee			GPS Latitude/Longitude	
				Start	End
Item	Vegetation			39.451118°	39.455725°
				-122.017132°	-122.013500°
DWR ID	DWR_LD0002_01_f_2024_11				
Comment Code					
V1 : Control annual grass and weeds on the levee slopes and easements.					
Inspector Comment					

No Photos

LM Start	2.72	Rating **	M	Issue No.	13
LM End	3.33	Issue Type +	Ma	Location *	WS
Category	Earthen Levee			GPS Latitude/Longitude	
				Start	End
Item	Vegetation			39.451123°	39.456342°
				-122.017128°	-122.009568°
DWR ID	DWR_LD0002_01_f_2024_13				
Comment Code					
V1 : Control annual grass and weeds on the levee slopes and easements.					
Inspector Comment					

No Photos

* Location LS : Land Side N/A : Not Applicable WS : Water Side CR : Crown	** Rating A : Acceptable M : Minimally Acceptable U : Unacceptable	N : Not Inspected/Rated C : Corrected A/W : Acceptable but Monitor & Maintain	+ Issue Type Ma : Maintenance Deficiency Ob : Design & System Obsolescence En : Enforcement
----------------------------------------------------------------------------------------------	------------------------------------------------------------------------------------	--------------------------------------------------------------------------------------------	-------------------------------------------------------------------------------------------------------------

**Flood Control Project Maintenance
Levee Inspections**

Maintenance Issue Types Only, Levee Inspection Report By Mile - Fall 2024

Levee District No. 0002 (Glenn County)

Waterway	Bank	Unit Miles	Inspection Start/End	Inspector
Unit No. 01 Glenn County Sacramento River	Right	4.90	09/25/2024 09/25/2024	Makar Sokol

LM Start	2.94	Rating **	M	Issue No.	2
LM End	2.94	Issue Type +	Ma	Location *	LS
Category	Earthen Levee			GPS Latitude/Longitude	
				Start	End
Item	Animal Control			39.453947°	39.453947°
				-122.015764°	-122.015764°
DWR ID	DWR_LD0002_01_f_2015_2				
Comment Code					
A3 : No rodents visible, but rodent burrows visible; need to backfill and compact or grout burrows.					
Inspector Comment					

Photo 1 of 1 : FA_2024_LD0002_28_2_20240924_00001.jpg



View of the rodent holes along the landside slope.

LM Start	3.08	Rating **	M	Issue No.	23
LM End	3.09	Issue Type +	Ma	Location *	LS
Category	Earthen Levee			GPS Latitude/Longitude	
				Start	End
Item	Animal Control			39.455394°	39.455501°
				-122.013990°	-122.013879°
DWR ID	DWR_LD0002_01_f_2020_23				
Comment Code					
A3 : No rodents visible, but rodent burrows visible; need to backfill and compact or grout burrows.					
Inspector Comment					

No Photos

LM Start	3.11	Rating **	U	Issue No.	12
LM End	3.13	Issue Type +	Ma	Location *	LS
Category	Earthen Levee			GPS Latitude/Longitude	
				Start	End
Item	Animal Control			39.455647°	39.455805°
				-122.013623°	-122.013286°
DWR ID	DWR_LD0002_01_s_2013_12				
Comment Code					
A1 : Exterminate rodents and backfill and compact or grout burrows.					
Inspector Comment					

Photo 1 of 1 : FA_2024_LD0002_28_12_20240924_00004.jpg



View of rodent activity on the landside slope. Spring 2022.

* Location LS : Land Side N/A : Not Applicable WS : Water Side CR : Crown		** Rating A : Acceptable M : Minimally Acceptable U : Unacceptable		N : Not Inspected/Rated C : Corrected A/W : Acceptable but Monitor & Maintain		+ Issue Type Ma : Maintenance Deficiency Ob : Design & System Obsolescence En : Enforcement	
----------------------------------------------------------------------------------------------	--	------------------------------------------------------------------------------------	--	-------------------------------------------------------------------------------------	--	-------------------------------------------------------------------------------------------------------------	--

**Flood Control Project Maintenance
Levee Inspections****Maintenance Issue Types Only, Levee Inspection Report By Mile - Fall 2024****Levee District No. 0002 (Glenn County)**

Waterway	Bank	Unit Miles	Inspection Start/End	Inspector
Unit No. 01 Glenn County Sacramento River	Right	4.90	09/25/2024 09/25/2024	Makar Sokol

LM Start	3.15	Rating **	M	Issue No.	36
LM End	3.15	Issue Type +	Ma	Location *	LS
Category	Earthen Levee			GPS Latitude/Longitude	
				Start	End
Item	Animal Control			39.455920°	39.455920°
				-122.012999°	-122.012999°
DWR ID	DWR_LD0002_01_s_2024_36				
Comment Code					
A3 : No rodents visible, but rodent burrows visible; need to backfill and compact or grout burrows.					
Inspector Comment					

No Photos

LM Start	3.17	Rating **	M	Issue No.	7
LM End	3.17	Issue Type +	Ma	Location *	LS
Category	Earthen Levee			GPS Latitude/Longitude	
				Start	End
Item	Animal Control			39.456076°	39.456076°
				-122.012563°	-122.012563°
DWR ID	DWR_LD0002_01_s _ 2023_7				
Comment Code					
A3 : No rodents visible, but rodent burrows visible; need to backfill and compact or grout burrows.					
Inspector Comment					

No Photos

LM Start	3.23	Rating **	U	Issue No.	16
LM End	3.32	Issue Type +	Ma	Location *	LS
Category	Earthen Levee			GPS Latitude/Longitude	
				Start	End
Item	Animal Control			39.456234°	39.456302°
				-122.011413°	-122.009772°
DWR ID	DWR_LD0002_01_f_2012_16				
Comment Code					
A3 : No rodents visible, but rodent burrows visible; need to backfill and compact or grout burrows.					
Inspector Comment					

Photo 1 of 1 : FA_2024_LD0002_28_16_20240924_00006.jpg



View of the rodent holes along the landside slope. Spring 2024.

* Location LS : Land Side N/A : Not Applicable WS : Water Side CR : Crown	** Rating A : Acceptable M : Minimally Acceptable U : Unacceptable	N : Not Inspected/Rated C : Corrected A/W : Acceptable but Monitor & Maintain	+ Issue Type Ma : Maintenance Deficiency Ob : Design & System Obsolescence En : Enforcement
----------------------------------------------------------------------------------------------	------------------------------------------------------------------------------------	--------------------------------------------------------------------------------------------	-------------------------------------------------------------------------------------------------------------

**Flood Control Project Maintenance
Levee Inspections****Maintenance Issue Types Only, Levee Inspection Report By Mile - Fall 2024****Levee District No. 0002 (Glenn County)**

Waterway	Bank	Unit Miles	Inspection Start/End	Inspector
Unit No. 01 Glenn County Sacramento River	Right	4.90	09/25/2024 09/25/2024	Makar Sokol

LM Start	3.42	Rating **	M	Issue No.	19							
LM End	3.73	Issue Type +	Ma	Location *	LS							
Category	Earthen Levee		GPS Latitude/Longitude									
			Start	End								
Item	Vegetation		39.457440°	39.461494°								
			-122.009438°	-122.011466°								
DWR ID	DWR_LD0002_01_f_2024_19											
Comment Code												
V1 : Control annual grass and weeds on the levee slopes and easements.												
Inspector Comment												

No Photos

LM Start	3.42	Rating **	M	Issue No.	20							
LM End	4.14	Issue Type +	Ma	Location *	WS							
Category	Earthen Levee		GPS Latitude/Longitude									
			Start	End								
Item	Vegetation		39.457460°	39.467448°								
			-122.009438°	-122.011580°								
DWR ID	DWR_LD0002_01_f_2024_20											
Comment Code												
V1 : Control annual grass and weeds on the levee slopes and easements.												
Inspector Comment												

No Photos

LM Start	3.48	Rating **	U	Issue No.	24							
LM End	3.48	Issue Type +	Ma	Location *	LS							
Category	Earthen Levee		GPS Latitude/Longitude									
			Start	End								
Item	Animal Control		39.458193°	39.458193°								
			-122.009550°	-122.009550°								
DWR ID	DWR_LD0002_01_f_2021_24											
Comment Code												
A3 : No rodents visible, but rodent burrows visible; need to backfill and compact or grout burrows.												
Inspector Comment												

Photo 1 of 1 : FA_2024_LD0002_28_24_20240924_00007.jpg



View of rodent activity along the landside slope. Fall 2022.

* Location	** Rating	+ Issue Type
LS : Land Side WS : Water Side CR : Crown	A : Acceptable M : Minimally Acceptable U : Unacceptable	Ma : Maintenance Deficiency Ob : Design & System Obsolescence En : Enforcement
N/A : Not Applicable	N : Not Inspected/Rated C : Corrected A/W : Acceptable but Monitor & Maintain	

**Flood Control Project Maintenance
Levee Inspections****Maintenance Issue Types Only, Levee Inspection Report By Mile - Fall 2024****Levee District No. 0002 (Glenn County)**

Waterway	Bank	Unit Miles	Inspection Start/End	Inspector
Unit No. 01 Glenn County Sacramento River	Right	4.90	09/25/2024 09/25/2024	Makar Sokol

LM Start	3.53	Rating **	M	Issue No.	27
LM End	3.59	Issue Type +	Ma	Location *	LS
Category	Earthen Levee			GPS Latitude/Longitude	
				Start	End
Item	Animal Control			39.458807°	39.459614°
				-122.009990°	-122.010741°
DWR ID	DWR_LD0002_01_s_2014_27				
Comment Code					
A3 : No rodents visible, but rodent burrows visible; need to backfill and compact or grout burrows.					
Inspector Comment					

Photo 1 of 1 : FA_2024_LD0002_28_27_20240924_00008.jpg



View of the rodent holes along the landside slope. Spring 2021.

LM Start	3.62	Rating **	M	Issue No.	25
LM End	3.62	Issue Type +	Ma	Location *	LS
Category	Earthen Levee			GPS Latitude/Longitude	
				Start	End
Item	Animal Control			39.459888°	39.459888°
				-122.010970°	-122.010970°
DWR ID	DWR_LD0002_01_f_2020_25				
Comment Code					
A3 : No rodents visible, but rodent burrows visible; need to backfill and compact or grout burrows.					
Inspector Comment					

No Photos

LM Start	3.79	Rating **	M	Issue No.	50
LM End	3.79	Issue Type +	Ma	Location *	LS
Category	Earthen Levee			GPS Latitude/Longitude	
				Start	End
Item	Animal Control			39.462358°	39.462358°
				-122.011623°	-122.011623°
DWR ID	DWR_LD0002_01_s_2019_50				
Comment Code					
A3 : No rodents visible, but rodent burrows visible; need to backfill and compact or grout burrows.					
Inspector Comment					

Photo 1 of 1 : FA_2024_LD0002_28_50_20240924_00014.jpg



View of the rodent holes on the landside slope. Spring 2024.

* Location LS : Land Side N/A : Not Applicable WS : Water Side CR : Crown		** Rating A : Acceptable M : Minimally Acceptable U : Unacceptable N : Not Inspected/Rated C : Corrected A/W : Acceptable but Monitor & Maintain		+ Issue Type Ma : Maintenance Deficiency Ob : Design & System Obsolescence En : Enforcement	
----------------------------------------------------------------------------------------------	--	---------------------------------------------------------------------------------------------------------------------------------------------------------------------------	--	-------------------------------------------------------------------------------------------------------------	--

**Flood Control Project Maintenance
Levee Inspections****Maintenance Issue Types Only, Levee Inspection Report By Mile - Fall 2024****Levee District No. 0002 (Glenn County)**

Waterway	Bank	Unit Miles	Inspection Start/End	Inspector
Unit No. 01 Glenn County Sacramento River	Right	4.90	09/25/2024 09/25/2024	Makar Sokol

LM Start	3.86	Rating **	M	Issue No.	53
LM End	3.86	Issue Type +	Ma	Location *	LS
Category	Earthen Levee			GPS Latitude/Longitude	
				Start	End
Item	Animal Control			39.463310°	39.463310°
				-122.011562°	-122.011562°
DWR ID	DWR_LD0002_01_s_2019_53				
Comment Code					
A3 : No rodents visible, but rodent burrows visible; need to backfill and compact or grout burrows.					
Inspector Comment					

No Photos

LM Start	4.00	Rating **	M	Issue No.	40
LM End	4.00	Issue Type +	Ma	Location *	LS
Category	Earthen Levee			GPS Latitude/Longitude	
				Start	End
Item	Animal Control			39.465423°	39.465423°
				-122.011245°	-122.011245°
DWR ID	DWR_LD0002_01_s_2022_40				
Comment Code					
A3 : No rodents visible, but rodent burrows visible; need to backfill and compact or grout burrows.					
Inspector Comment					

No Photos

LM Start	4.38	Rating **	M	Issue No.	21
LM End	4.82	Issue Type +	Ma	Location *	WS
Category	Earthen Levee			GPS Latitude/Longitude	
				Start	End
Item	Vegetation			39.470614°	39.475981°
				-122.012781°	-122.017068°
DWR ID	DWR_LD0002_01_f_2024_21				
Comment Code					
V1 : Control annual grass and weeds on the levee slopes and easements.					
Inspector Comment					

No Photos

* Location LS : Land Side N/A : Not Applicable WS : Water Side CR : Crown	** Rating A : Acceptable M : Minimally Acceptable U : Unacceptable	+ Issue Type Ma : Maintenance Deficiency Ob : Design & System Obsolescence En : Enforcement
----------------------------------------------------------------------------------------------	------------------------------------------------------------------------------------	-------------------------------------------------------------------------------------------------------------

**Flood Control Project Maintenance
Levee Inspections****Maintenance Issue Types Only, Levee Inspection Report By Mile - Fall 2024****Levee District No. 0002 (Glenn County)**

Waterway	Bank	Unit Miles	Inspection Start/End	Inspector
Unit No. 01 Glenn County Sacramento River	Right	4.90	09/25/2024 09/25/2024	Makar Sokol

LM Start	4.61	Rating **	N	Issue No.	54
LM End	4.61	Issue Type +	Ma	Location *	WS
Category	Earthen Levee			GPS Latitude/Longitude	
				Start	End
Item	Trim / Thin Trees			39.473414°	39.473414°
				-122.015340°	-122.015340°
DWR ID	DWR_LD0002_01_s _ 2019_54				
Comment Code					
T5 : Tree stumps.					
Inspector Comment					

No Photos

LM Start	4.64	Rating **	N	Issue No.	55
LM End	4.64	Issue Type +	Ma	Location *	WS
Category	Earthen Levee			GPS Latitude/Longitude	
				Start	End
Item	Trim / Thin Trees			39.473680°	39.473680°
				-122.015618°	-122.015618°
DWR ID	DWR_LD0002_01_s _ 2019_55				
Comment Code					
T5 : Tree stumps.					
Inspector Comment					

No Photos

LM Start	4.67	Rating **	C	Issue No.	37
LM End	4.67	Issue Type +	Ma	Location *	WS
Category	Earthen Levee			GPS Latitude/Longitude	
				Start	End
Item	Trim / Thin Trees			39.474061°	39.474061°
				-122.015976°	-122.015976°
DWR ID	DWR_LD0002_01_s _ 2024_37				
Comment Code					
T2 : Tree or limb.					
Inspector Comment					

No Photos

* Location LS : Land Side N/A : Not Applicable WS : Water Side CR : Crown	** Rating A : Acceptable M : Minimally Acceptable U : Unacceptable	+ Issue Type Ma : Maintenance Deficiency Ob : Design & System Obsolescence En : Enforcement
----------------------------------------------------------------------------------------------	------------------------------------------------------------------------------------	-------------------------------------------------------------------------------------------------------------