

**Flood Control Project Maintenance
Levee Inspections**

Maintenance Issue Types Only, Levee Inspection Report By Mile - Fall 2021

Levee District No. 0002 (Glenn County)

Waterway	Bank	Unit Miles	Inspection Start/End	Inspector
Unit No. 01 Glenn County Sacramento River	Right	4.90	10/12/2021 10/12/2021	Makar Sokol

LM Start		Rating **	A	Issue No.	14
LM End		Issue Type +	Ma	Location *	
Category	Earthen Levee		GPS Latitude/Longitude		
			Start	End	
Item	Operations & Maintenance Manuals			°	°
				°	°
DWR ID	DWR_LD0002_01_s _ 2013_14				
Comment Code					
Inspector Comment					
The LMA has copies of the O&M manuals.					

No Photos

LM Start		Rating **	A	Issue No.	17
LM End		Issue Type +	Ma	Location *	
Category	Earthen Levee		GPS Latitude/Longitude		
			Start	End	
Item	Emergency Supplies & Equipment			°	°
				°	°
DWR ID	DWR_LD0002_01_s _ 2013_17				
Comment Code					
Inspector Comment					
The LMA has adequate flood fight supplies and equipment.					

No Photos

LM Start		Rating **	M	Issue No.	18
LM End		Issue Type +	Ma	Location *	
Category	Earthen Levee		GPS Latitude/Longitude		
			Start	End	
Item	Flood Preparedness & Training			°	°
				°	°
DWR ID	DWR_LD0002_01_s _ 2013_18				
Comment Code					
Inspector Comment					
Recommend taking flood fight training.					

No Photos

* Location LS : Land Side N/A : Not Applicable WS : Water Side CR : Crown	** Rating A : Acceptable M : Minimally Acceptable U : Unacceptable	N : Not Inspected/Rated C : Corrected A/W : Acceptable but Monitor & Maintain	+ Issue Type Ma : Maintenance Deficiency Ob : Design & System Obsolescence En : Enforcement
--	--	---	---

**Flood Control Project Maintenance
Levee Inspections**

Maintenance Issue Types Only, Levee Inspection Report By Mile - Fall 2021

Levee District No. 0002 (Glenn County)

Waterway	Bank	Unit Miles	Inspection Start/End	Inspector
Unit No. 01 Glenn County Sacramento River	Right	4.90	10/12/2021 10/12/2021	Makar Sokol

LM Start	0.07	Rating **	M	Issue No.	6
LM End	0.28	Issue Type +	Ma	Location *	WS
Category	Supplemental			GPS Latitude/Longitude	
				Start	End
Item	2018 USACE Erosion Survey			39.414649 °	39.417689 °
				-122.009853 °	-122.010369 °
DWR ID					
Comment Code					
Inspector Comment					
2018 Site ID: SAC 164.7 R					
Status: Eroding					
2018 Field Notes: No observed change.					
Site History: 2009 - Very slow retreat, hard toe, encroaching into the levee projection. 2010 - Slowly eroding. 2011 - Site extended downstream. 2017 - New erosion along entire site.					

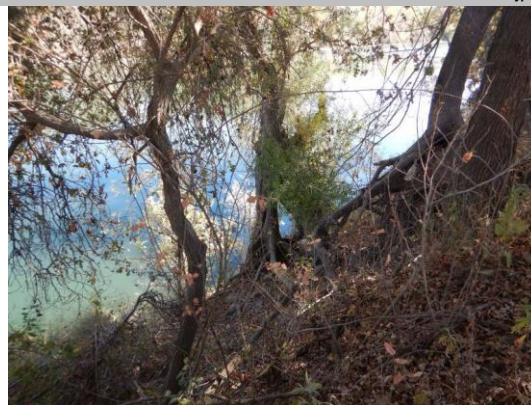
Photo 1 of 2 : FA_2021_LD0002_28_6_20211218_2.jpg



USACE 2018 Erosion Photo #1

LM Start	0.07	Rating **	M	Issue No.	6 (cont)
LM End	0.28	Issue Type +	Ma	Location *	WS

Photo 2 of 2 : FA_2021_LD0002_28_6_20211218_10.jpg



USACE 2018 Erosion Photo #2

LM Start	0.64	Rating **	M	Issue No.	35
LM End	0.77	Issue Type +	Ma	Location *	WS
Category	Earthen Levee			GPS Latitude/Longitude	
				Start	End
Item	Vegetation			39.422805 °	39.424597 °
				-122.011640 °	-122.011527 °
DWR ID	DWR_LD0002_01_s_2018_35				
Comment Code					
V2 : Remove the wild growth other than native grasses from the levee slopes.					
Inspector Comment					

Photo 1 of 1 : FA_2021_LD0002_28_35_20211015_00047.jpg



View of the vegetation along the waterside slope. Fall 2021.

* Location LS : Land Side N/A : Not Applicable WS : Water Side CR : Crown		** Rating A : Acceptable M : Minimally Acceptable U : Unacceptable N : Not Inspected/Rated C : Corrected A/W : Acceptable but Monitor & Maintain		+ Issue Type Ma : Maintenance Deficiency Ob : Design & System Obsolescence En : Enforcement	
--	--	---	--	---	--

**Flood Control Project Maintenance
Levee Inspections**

Maintenance Issue Types Only, Levee Inspection Report By Mile - Fall 2021

Levee District No. 0002 (Glenn County)

Waterway	Bank	Unit Miles	Inspection Start/End	Inspector
Unit No. 01 Glenn County Sacramento River	Right	4.90	10/12/2021 10/12/2021	Makar Sokol

LM Start	1.25	Rating **	N	Issue No.	31
LM End	1.25	Issue Type +	Ma	Location *	WS
Category	Earthen Levee			GPS Latitude/Longitude	
				Start	End
Item	Trim / Thin Trees			39.431524 °	39.431524 °
				-122.010790 °	-122.010790 °
DWR ID	DWR_LD0002_01_s_2019_31				
Comment Code					
T5 : Tree stumps.					
Inspector Comment					

No Photos

LM Start	1.40	Rating **	M	Issue No.	34
LM End	1.40	Issue Type +	Ma	Location *	CR
Category	Earthen Levee			GPS Latitude/Longitude	
				Start	End
Item	Crown Surface / Depressions / Rutting			39.433809 °	39.433809 °
				-122.010814 °	-122.010814 °
DWR ID	DWR_LD0002_01_f_2016_34				
Comment Code					
C2 : Repair depressions or ruts in the crown or slope.					
Inspector Comment					

Photo 1 of 1 : FA_2021_LD0002_28_34_20210928_00009.jpg



View of a depression on the levee crown looking upstream. Spring 2021.

LM Start	1.56	Rating **	U	Issue No.	15
LM End	1.60	Issue Type +	Ma	Location *	LS
Category	Earthen Levee			GPS Latitude/Longitude	
				Start	End
Item	Animal Control			39.436009 °	39.436643 °
				-122.010524 °	-122.010498 °
DWR ID	DWR_LD0002_01_f_2012_15				
Comment Code					
A3 : No rodents visible, but rodent burrows visible; need to backfill and compact or grout burrows.					
Inspector Comment					

Photo 1 of 1 : FA_2021_LD0002_28_15_20210928_00004.jpg



View of the rodent activity along the landside slope. Fall 2020.

* Location LS : Land Side N/A : Not Applicable WS : Water Side CR : Crown		** Rating A : Acceptable M : Minimally Acceptable U : Unacceptable		N : Not Inspected/Rated C : Corrected A/W : Acceptable but Monitor & Maintain		+ Issue Type Ma : Maintenance Deficiency Ob : Design & System Obsolescence En : Enforcement	
--	--	--	--	---	--	---	--

**Flood Control Project Maintenance
Levee Inspections**

Maintenance Issue Types Only, Levee Inspection Report By Mile - Fall 2021

Levee District No. 0002 (Glenn County)

Waterway	Bank	Unit Miles	Inspection Start/End	Inspector
Unit No. 01 Glenn County Sacramento River	Right	4.90	10/12/2021 10/12/2021	Makar Sokol

LM Start	2.01	Rating **	N	Issue No.	41
LM End	2.01	Issue Type +	Ma	Location *	WS
Category	Earthen Levee			GPS Latitude/Longitude	
				Start	End
Item	Trim / Thin Trees			39.441698 °	39.441698 °
				-122.012794 °	-122.012794 °
DWR ID	DWR_LD0002_01_s_2019_41				
Comment Code					
T5 : Tree stumps.					
Inspector Comment					

No Photos

LM Start	2.91	Rating **	M	Issue No.	2
LM End	2.96	Issue Type +	Ma	Location *	LS
Category	Earthen Levee			GPS Latitude/Longitude	
				Start	End
Item	Animal Control			39.453595 °	39.454003 °
				-122.016273 °	-122.015503 °
DWR ID	DWR_LD0002_01_f_2015_2				
Comment Code					
A3 : No rodents visible, but rodent burrows visible; need to backfill and compact or grout burrows.					
Inspector Comment					

Photo 1 of 1 : FA_2021_LD0002_28_2_20210928_00001.jpg



View of the rodent holes along the landside slope.

LM Start	3.08	Rating **	M	Issue No.	23
LM End	3.09	Issue Type +	Ma	Location *	LS
Category	Earthen Levee			GPS Latitude/Longitude	
				Start	End
Item	Animal Control			39.455394 °	39.455501 °
				-122.013990 °	-122.013879 °
DWR ID	DWR_LD0002_01_f_2020_23				
Comment Code					
A3 : No rodents visible, but rodent burrows visible; need to backfill and compact or grout burrows.					
Inspector Comment					

No Photos

* Location		** Rating		+ Issue Type	
LS : Land Side	N/A : Not Applicable	A : Acceptable	N : Not Inspected/Rated	Ma : Maintenance Deficiency	
WS : Water Side		M : Minimally Acceptable	C : Corrected	Ob : Design & System Obsolescence	
CR : Crown		U : Unacceptable	A/W : Acceptable but Monitor & Maintain	En : Enforcement	

**Flood Control Project Maintenance
Levee Inspections**

Maintenance Issue Types Only, Levee Inspection Report By Mile - Fall 2021

Levee District No. 0002 (Glenn County)

Waterway	Bank	Unit Miles	Inspection Start/End	Inspector
Unit No. 01 Glenn County Sacramento River	Right	4.90	10/12/2021 10/12/2021	Makar Sokol

LM Start	3.11	Rating **	U	Issue No.	12
LM End	3.13	Issue Type +	Ma	Location *	LS
Category	Earthen Levee			GPS Latitude/Longitude	
				Start	End
Item	Animal Control			39.455647 °	39.455805 °
				-122.013623 °	-122.013286 °
DWR ID	DWR_LD0002_01_s_2013_12				
Comment Code					
A1 : Exterminate rodents and backfill and compact or grout burrows.					
Inspector Comment					

Photo 1 of 1 : FA_2021_LD0002_28_12_20210928_00003.jpg



View of rodent activity on the landside slope. Fall 2019.

LM Start	3.24	Rating **	U	Issue No.	16
LM End	3.32	Issue Type +	Ma	Location *	LS
Category	Earthen Levee			GPS Latitude/Longitude	
				Start	End
Item	Animal Control			39.456222 °	39.456268 °
				-122.011266 °	-122.009873 °
DWR ID	DWR_LD0002_01_f_2012_16				
Comment Code					
A3 : No rodents visible, but rodent burrows visible; need to backfill and compact or grout burrows.					
Inspector Comment					

Photo 1 of 1 : FA_2021_LD0002_28_16_20210928_00005.jpg



View of the rodent holes along the landside slope. Spring 2019.

LM Start	3.40	Rating **	M	Issue No.	47
LM End	3.40	Issue Type +	Ma	Location *	WS
Category	Earthen Levee			GPS Latitude/Longitude	
				Start	End
Item	Vegetation			39.457095 °	39.457095 °
				-122.009469 °	-122.009469 °
DWR ID	DWR_LD0002_01_s_2019_47				
Comment Code					
V2 : Remove the wild growth other than native grasses from the levee slopes.					
Inspector Comment					
The berry vines should be removed from the waterside slope.					

No Photos

* Location LS : Land Side N/A : Not Applicable WS : Water Side CR : Crown		** Rating A : Acceptable M : Minimally Acceptable U : Unacceptable N : Not Inspected/Rated C : Corrected A/W : Acceptable but Monitor & Maintain		+ Issue Type Ma : Maintenance Deficiency Ob : Design & System Obsolescence En : Enforcement	
--	--	---	--	---	--

**Flood Control Project Maintenance
Levee Inspections**

Maintenance Issue Types Only, Levee Inspection Report By Mile - Fall 2021

Levee District No. 0002 (Glenn County)

Waterway	Bank	Unit Miles	Inspection Start/End	Inspector
Unit No. 01 Glenn County Sacramento River	Right	4.90	10/12/2021 10/12/2021	Makar Sokol

LM Start	3.48	Rating **	M	Issue No.	24
LM End	3.48	Issue Type +	Ma	Location *	LS
Category	Earthen Levee			GPS Latitude/Longitude	
				Start	End
Item	Animal Control			39.458193 °	39.458193 °
				-122.009550 °	-122.009550 °
DWR ID	DWR_LD0002_01_f_2021_24				
Comment Code					
A3 : No rodents visible, but rodent burrows visible; need to backfill and compact or grout burrows.					
Inspector Comment					

No Photos

LM Start	3.53	Rating **	M	Issue No.	27
LM End	3.59	Issue Type +	Ma	Location *	LS
Category	Earthen Levee			GPS Latitude/Longitude	
				Start	End
Item	Animal Control			39.458807 °	39.459614 °
				-122.009990 °	-122.010741 °
DWR ID	DWR_LD0002_01_s_2014_27				
Comment Code					
A3 : No rodents visible, but rodent burrows visible; need to backfill and compact or grout burrows.					
Inspector Comment					

Photo 1 of 1 : FA_2021_LD0002_28_27_20210928_00006.jpg



View of the rodent holes along the landside slope. Spring 2021.

LM Start	3.62	Rating **	M	Issue No.	25	
LM End	3.62	Issue Type +	Ma	Location *	LS	
Category	Earthen Levee			GPS Latitude/Longitude		
				Start		End
Item	Animal Control			39.459888 °		39.459888 °
				-122.010970 °		-122.010970 °
DWR ID	DWR_LD0002_01_f_2020_25					
Comment Code						
A3 : No rodents visible, but rodent burrows visible; need to backfill and compact or grout burrows.						
Inspector Comment						

No Photos

* Location LS : Land Side N/A : Not Applicable WS : Water Side CR : Crown		** Rating A : Acceptable M : Minimally Acceptable U : Unacceptable		N : Not Inspected/Rated C : Corrected A/W : Acceptable but Monitor & Maintain		+ Issue Type Ma : Maintenance Deficiency Ob : Design & System Obsolescence En : Enforcement	
--	--	--	--	---	--	---	--

**Flood Control Project Maintenance
Levee Inspections**

Maintenance Issue Types Only, Levee Inspection Report By Mile - Fall 2021

Levee District No. 0002 (Glenn County)

Waterway	Bank	Unit Miles	Inspection Start/End	Inspector
Unit No. 01 Glenn County Sacramento River	Right	4.90	10/12/2021 10/12/2021	Makar Sokol

LM Start	3.68	Rating **	C	Issue No.	26
LM End	3.68	Issue Type +	Ma	Location *	WS
Category	Earthen Levee		GPS Latitude/Longitude		
			Start	End	
Item	Encroachments		39.460837 °	39.460837 °	
			-122.011323 °	-122.011323 °	
DWR ID	DWR_LD0002_01_f_2020_26				
Comment Code					
TR : Tree or limb					
Inspector Comment					

No Photos

LM Start	3.79	Rating **	M	Issue No.	50
LM End	3.79	Issue Type +	Ma	Location *	LS
Category	Earthen Levee		GPS Latitude/Longitude		
			Start	End	
Item	Animal Control		39.462358 °	39.462358 °	
			-122.011623 °	-122.011623 °	
DWR ID	DWR_LD0002_01_s_2019_50				
Comment Code					
A3 : No rodents visible, but rodent burrows visible; need to backfill and compact or grout burrows.					
Inspector Comment					

Photo 1 of 1 : FA_2021_LD0002_28_50_20210928_00011.jpg



View of the rodent holes on the landside slope. Spring 2019.

LM Start	3.85	Rating **	M	Issue No.	53
LM End	3.85	Issue Type +	Ma	Location *	LS
Category	Earthen Levee		GPS Latitude/Longitude		
			Start	End	
Item	Animal Control		39.463261 °	39.463261 °	
			-122.011613 °	-122.011613 °	
DWR ID	DWR_LD0002_01_s_2019_53				
Comment Code					
A3 : No rodents visible, but rodent burrows visible; need to backfill and compact or grout burrows.					
Inspector Comment					

No Photos

* Location	** Rating	+ Issue Type
LS : Land Side WS : Water Side CR : Crown	A : Acceptable M : Minimally Acceptable U : Unacceptable	Ma : Maintenance Deficiency Ob : Design & System Obsolescence En : Enforcement
N/A : Not Applicable	N : Not Inspected/Rated C : Corrected A/W : Acceptable but Monitor & Maintain	

**Flood Control Project Maintenance
Levee Inspections**

Maintenance Issue Types Only, Levee Inspection Report By Mile - Fall 2021

Levee District No. 0002 (Glenn County)

Waterway	Bank	Unit Miles	Inspection Start/End	Inspector
Unit No. 01 Glenn County Sacramento River	Right	4.90	10/12/2021 10/12/2021	Makar Sokol

LM Start	3.93	Rating **	C	Issue No.	29
LM End	3.93	Issue Type +	Ma	Location *	LS
Category	Earthen Levee		GPS Latitude/Longitude		
			Start	End	
Item	Animal Control		39.464409 °	39.464409 °	
			-122.011455 °	-122.011455 °	
DWR ID	DWR_LD0002_01_f_2020_29				
Comment Code					
A3 : No rodents visible, but rodent burrows visible; need to backfill and compact or grout burrows.					
Inspector Comment					

No Photos

LM Start	4.00	Rating **	C	Issue No.	28
LM End	4.02	Issue Type +	Ma	Location *	LS
Category	Earthen Levee		GPS Latitude/Longitude		
			Start	End	
Item	Animal Control		39.465418 °	39.465657 °	
			-122.011235 °	-122.011237 °	
DWR ID	DWR_LD0002_01_f_2018_28				
Comment Code					
A3 : No rodents visible, but rodent burrows visible; need to backfill and compact or grout burrows.					
Inspector Comment					

No Photos

LM Start	4.05	Rating **	M	Issue No.	32
LM End	4.05	Issue Type +	Ma	Location *	WS
Category	Earthen Levee		GPS Latitude/Longitude		
			Start	End	
Item	Encroachments		39.466030 °	39.466030 °	
			-122.011324 °	-122.011324 °	
DWR ID	DWR_LD0002_01_f_2020_32				
Comment Code					
TR : Tree or limb					
Inspector Comment					

No Photos

* Location LS : Land Side N/A : Not Applicable WS : Water Side CR : Crown	** Rating A : Acceptable M : Minimally Acceptable U : Unacceptable	N : Not Inspected/Rated C : Corrected A/W : Acceptable but Monitor & Maintain	+ Issue Type Ma : Maintenance Deficiency Ob : Design & System Obsolescence En : Enforcement
--	--	---	---

**Flood Control Project Maintenance
Levee Inspections**

Maintenance Issue Types Only, Levee Inspection Report By Mile - Fall 2021

Levee District No. 0002 (Glenn County)

Waterway	Bank	Unit Miles	Inspection Start/End	Inspector
Unit No. 01 Glenn County Sacramento River	Right	4.90	10/12/2021 10/12/2021	Makar Sokol

LM Start	4.61	Rating **	N	Issue No.	54
LM End	4.61	Issue Type +	Ma	Location *	WS
Category	Earthen Levee			GPS Latitude/Longitude	
				Start	End
Item	Trim / Thin Trees			39.473414 °	39.473414 °
				-122.015340 °	-122.015340 °
DWR ID	DWR_LD0002_01_s _ 2019_54				
Comment Code					
T5 : Tree stumps.					
Inspector Comment					

No Photos

LM Start	4.64	Rating **	N	Issue No.	55
LM End	4.64	Issue Type +	Ma	Location *	WS
Category	Earthen Levee			GPS Latitude/Longitude	
				Start	End
Item	Trim / Thin Trees			39.473680 °	39.473680 °
				-122.015618 °	-122.015618 °
DWR ID	DWR_LD0002_01_s _ 2019_55				
Comment Code					
T5 : Tree stumps.					
Inspector Comment					

No Photos

LM Start	4.90	Rating **	M	Issue No.	57
LM End	4.90	Issue Type +	Ma	Location *	WS
Category	Earthen Levee			GPS Latitude/Longitude	
				Start	End
Item	Encroachments			39.477096 °	39.477096 °
				-122.017607 °	-122.017607 °
DWR ID	DWR_LD0002_01_s _ 2019_57				
Comment Code					
TR : Tree or limb					
Inspector Comment					

Photo 1 of 1 : FA_2021_LD0002_28_57_20210928_00012.jpg



View of the tree and branches on the waterside slope. Spring 2020.

* Location LS : Land Side N/A : Not Applicable WS : Water Side CR : Crown		** Rating A : Acceptable M : Minimally Acceptable U : Unacceptable		N : Not Inspected/Rated C : Corrected A/W : Acceptable but Monitor & Maintain		+ Issue Type Ma : Maintenance Deficiency Ob : Design & System Obsolescence En : Enforcement	
--	--	--	--	---	--	---	--