

**Flood Control Project Maintenance
Levee Inspections**

Fall 2017 Levee Maintenance Deficiency Summary Report

Overall LMA & Unit Ratings, including USACE Erosion Survey

Sacramento River Basin

LD0002	Overall LMA Rating	Total LMA Miles						
Levee District No. 0002 (Glenn County)	U	4.90						
Rated Item	Maintenance Deficiency				Enforcement		Design & System Obsolescence	
	M Miles	U Miles	M + 4U Miles	Threshold %	M Miles	U Miles	M Miles	U Miles
<i>Earthen Levee</i>								
Vegetation					0.01			
Encroachments	0.04		0.04	0.82%	0.20			
Animal Control	0.08	0.26	1.12	22.86%				
Crown Surface / Depressions / Rutting	0.01		0.01	0.20%				
Flood Preparedness & Training	0.05		0.05	1.02%				
<i>Supplemental</i>								
2015 USACE Erosion Survey, DRAFT	0.21		0.21	4.29%				
DWR UCIP Field Study					0.13	0.01		
<i>LMA Totals:</i>	0.39	0.26	1.43	29.18%	0.34	0.01	0.00	0.00

Unit No. 01 Glenn County Sacramento River RB	Overall Unit Rating	Total Unit Miles						
LD0002	U	4.90						
Rated Item	Maintenance Deficiency				Enforcement		Design & System Obsolescence	
	M Miles	U Miles	M + 4U Miles	Threshold %	M Miles	U Miles	M Miles	U Miles
<i>Earthen Levee</i>								
Vegetation					0.01			
Encroachments	0.04		0.04	0.82%	0.20			
Animal Control	0.08	0.26	1.12	22.86%				
Crown Surface / Depressions / Rutting	0.01		0.01	0.20%				
<i>Supplemental</i>								
2015 USACE Erosion Survey, DRAFT	0.21		0.21	4.29%				
DWR UCIP Field Study					0.13	0.01		
<i>Unit Totals:</i>	0.34	0.26	1.38	28.16%	0.34	0.01	0.00	0.00

**Flood Control Project Maintenance
Levee Inspections**
LMA District Cover Sheet
Fall 2017 Levee Inspection Results

Levee District No. 0002 (Glenn County)

	Spring (March - May)	Summer ** (June - August)	Fall (September - November)	Winter ** (December - February)
† Overall LMA Rating (Fall Only)			U	

** Non-receipt of Summer or Winter Inspection
Reports may effect overall annual rating.

† SPRING INSPECTIONS: Overall maintenance ratings are not determined for the spring inspection results. Individual maintenance deficiencies are rated using the same criteria in the spring and in the fall.

FALL INSPECTIONS: The overall maintenance rating shown above is based on operation and maintenance deficiencies identified within the attached unit inspection reports. This rating is not intended to be an indication of risk.

Comments

**Flood Control Project Maintenance
Levee Inspections**

Unit Cover Sheet

Fall 2017 Levee Inspection Results

Levee District No. 0002 (Glenn County)

Waterway			Bank	Unit Miles
Unit No. 01 Glenn County Sacramento River			Right	4.90
	Spring (March - May)	Summer (June - August)	(September - November) Fall	Winter (December - February)
Unit Maintenance Rating (Fall Only)			U	
Date of Inspection	3/29/2017 - 3/29/2017		10/26/2017 - 10/26/2017	
DWR Inspector	Bob Duffey		Bob Duffey	
Accompanied By	Dennis Clark LD 2		Dennis Clark LD 2	

Summer & Winter Inspections

The Local Maintaining Agency (LMA) is responsible for summer and winter inspections. The LMA is required to submit a report regarding summer and winter inspections to the California Department of Water Resources (DWR).

DWR must be informed on the:

- a) completion of the inspection
- b) any changes other than the results of normal maintenance
- c) corrections to deficiencies noted in this report

If additional items are noted, further documentation of those items must also be submitted.

The LMA should submit this information to DWR using the LMA web application tool available at:

<http://cdec.water.ca.gov/lma.html>

If the LMA is unable to submit information on this webpage, please contact DWR for assistance.

The LMA should submit the information and any associated documentation by September 30 for summer inspections and March 31 for winter inspections.

**Flood Control Project Maintenance
Levee Inspections**

Levee Inspection Report By Mile - Fall 2017

Levee District No. 0002 (Glenn County)

Waterway	Bank	Unit Miles	Inspection Start/End	Inspector
Unit No. 01 Glenn County Sacramento River	Right	4.90	10/26/2017 10/26/2017	Bob Duffey

LM Start		Rating **	A	Issue No.	14
LM End		Issue Type +	Ma	Location *	
Category	Earthen Levee		GPS Latitude/Longitude		
			Start	End	
Item	Operations & Maintenance Manuals			°	°
				°	°
DWR ID	DWR_LD0002_01_s _ 2013_14				
Comment Code					
Inspector Comment					
The LMA has copies of the O&M manuals.					

No Photos

LM Start		Rating **	A	Issue No.	17
LM End		Issue Type +	Ma	Location *	
Category	Earthen Levee		GPS Latitude/Longitude		
			Start	End	
Item	Emergency Supplies & Equipment			°	°
				°	°
DWR ID	DWR_LD0002_01_s _ 2013_17				
Comment Code					
Inspector Comment					
The LMA has adequate flood fight supplies and equipment.					

No Photos

LM Start		Rating **	M	Issue No.	18
LM End		Issue Type +	Ma	Location *	
Category	Earthen Levee		GPS Latitude/Longitude		
			Start	End	
Item	Flood Preparedness & Training			°	°
				°	°
DWR ID	DWR_LD0002_01_s _ 2013_18				
Comment Code					
Inspector Comment					
The LMA has completed flood fight training in the past. Recommend taking flood fight training.					

No Photos

* Location LS : Land Side N/A : Not Applicable WS : Water Side CR : Crown	** Rating A : Acceptable M : Minimally Acceptable U : Unacceptable	N : Not Inspected/Rated C : Corrected A/W : Acceptable but Monitor & Maintain	+ Issue Type Ma : Maintenance Deficiency Ob : Design & System Obsolescence En : Enforcement
--	--	---	---

**Flood Control Project Maintenance
Levee Inspections**

Levee Inspection Report By Mile - Fall 2017

Levee District No. 0002 (Glenn County)

Waterway	Bank	Unit Miles	Inspection Start/End	Inspector
Unit No. 01 Glenn County Sacramento River	Right	4.90	10/26/2017 10/26/2017	Bob Duffey

LM Start	0.07	Rating **	M	Issue No.	6
LM End	0.28	Issue Type +	Ma	Location *	WS
Category	Supplemental			GPS Latitude/Longitude	
				Start	End
Item	2015 USACE Erosion Survey, DRAFT			39.414649 °	39.417689 °
				-122.009853 °	-122.010369 °
DWR ID	DWR_LD0002_01_s_2016_6				
Comment Code					
Inspector Comment					
2009 - Very slow retreat, hard toe, encroaching into the levee projection. 2010 - Slowly eroding. 2011 - Site extended downstream. 2015: Last observed in 2013. [2015 Site ID: SAC_164-7_R]					

Photo 1 of 2 : FA_2017_LD0002_28_6_20170911_00003.jpg



USACE 2013 Photo #1

LM Start	0.07	Rating **	M	Issue No.	6 (cont)
LM End	0.28	Issue Type +	Ma	Location *	WS

Photo 2 of 2 : FA_2017_LD0002_28_6_20170911_00004.jpg



USACE 2013 Photo #2

* Location LS : Land Side N/A : Not Applicable WS : Water Side CR : Crown		** Rating A : Acceptable M : Minimally Acceptable U : Unacceptable N : Not Inspected/Rated C : Corrected A/W : Acceptable but Monitor & Maintain		+ Issue Type Ma : Maintenance Deficiency Ob : Design & System Obsolescence En : Enforcement	
---	--	--	--	--	--

**Flood Control Project Maintenance
Levee Inspections**

Levee Inspection Report By Mile - Fall 2017

Levee District No. 0002 (Glenn County)

Waterway	Bank	Unit Miles	Inspection Start/End	Inspector
Unit No. 01 Glenn County Sacramento River	Right	4.90	10/26/2017 10/26/2017	Bob Duffey

LM Start	0.59	Rating **	M	Issue No.	53	
LM End	0.59	Issue Type +	En	Location *		
Category	Supplemental			GPS Latitude/Longitude		
				Start	End	
Item	DWR UCIP Field Study			39.422088 °	39.422088 °	
				-122.011615 °	-122.011615 °	
DWR ID						
Comment Code						
Inspector Comment						
FS_ID:42083						
DS_ID:24877						
EP_NO: N/A						
Repair Type: Non-Urgent						
Crossing Status: Indicator Found						
UCIP Comments: Need to contact owner to determine if conduit goes through levee crown. If it does, will need to obtain permit number issued for encroachment.						
FIELD_STRUCT_DESC: Caltrans traffic control box located on the landside (LS) shoulder. Unable to determine if crossing goes through levee.						
FS Date: 5/16/2013						

Photo 1 of 3 : UCIP_FA_2017_42083_72882.jpg



View of landward slope.

LM Start	0.59	Rating **	M	Issue No.	53 (cont)
LM End	0.59	Issue Type +	En	Location *	

Photo 2 of 3 : UCIP_FA_2017_42083_72881.jpg



View of levee crown at crossing.

* Location LS : Land Side N/A : Not Applicable WS : Water Side CR : Crown		** Rating A : Acceptable N : Not Inspected/Rated M : Minimally Acceptable C : Corrected U : Unacceptable A/W : Acceptable but Monitor & Maintain		+ Issue Type Ma : Maintenance Deficiency Ob : Design & System Obsolescence En : Enforcement
--	--	---	--	---

**Flood Control Project Maintenance
Levee Inspections**

Levee Inspection Report By Mile - Fall 2017

Levee District No. 0002 (Glenn County)

Waterway	Bank	Unit Miles	Inspection Start/End	Inspector
Unit No. 01 Glenn County Sacramento River	Right	4.90	10/26/2017 10/26/2017	Bob Duffey

LM Start	0.59	Rating **	M	Issue No.	53 (cont)	
LM End	0.59	Issue Type +	En	Location *		
Category	Supplemental			GPS Latitude/Longitude		
				Start	End	
Item	DWR UCIP Field Study			39.422088 °	39.422088 °	
				-122.011615 °	-122.011615 °	
DWR ID						
Comment Code						
Inspector Comment						
FS_ID:42083						
DS_ID:24877						
EP_NO: N/A						
Repair Type: Non-Urgent						
Crossing Status: Indicator Found						
UCIP Comments: Need to contact owner to determine if conduit goes through levee crown. If it does, will need to obtain permit number issued for encroachment.						
FIELD_STRUCT_DESC: Caltrans traffic control box located on the landside (LS) shoulder. Unable to determine if crossing goes through levee.						
FS Date: 5/16/2013						

Photo 3 of 3 : UCIP_FA_2017_42083_72880.jpg



Service box located on landward shoulder.

LM Start	0.61	Rating **	M	Issue No.	54
LM End	0.61	Issue Type +	En	Location *	
Category	Supplemental			GPS Latitude/Longitude	
				Start	End
Item	DWR UCIP Field Study			39.422282 °	39.422282 °
				-122.011634 °	-122.011634 °
DWR ID					
Comment Code					
Inspector Comment					
FS_ID:38165 DS_ID:21185 EP_NO: 2356 Repair Type: Non-Urgent Crossing Status: Found UCIP Comments: Three pipes found in the pump house on landward side. Pump house appears to be no longer in use. Unable to locate pipes on waterward side. Will need to contact owner to determine status. Owner will need to coordinate with CVFPB regarding proper removal per Title 23 requirements. FIELD_STRUCT_DESC: [Princeton-Cordora-Glenn Irrigation District: Schaad Pumping Plant] 1 of 3: 28-inch steel pipe sleeved through 30-inch steel pipe through the levee, 20.0 feet below the crown. Annular gap is grouted. Flap gate on landside (LS) end. Pump in pump house on LS slope. Rock revetment around outlet on waterside (WS) slope. (Permit No. 2356-1956, Princeton-Cordora-Glenn Irrigation District) FS Date: 5/16/2013					

Photo 1 of 3 : UCIP_FA_2017_38165_69467.jpg



View of levee crown at crossing.

* Location LS : Land Side N/A : Not Applicable WS : Water Side CR : Crown		** Rating A : Acceptable N : Not Inspected/Rated M : Minimally Acceptable C : Corrected U : Unacceptable A/W : Acceptable but Monitor & Maintain		+ Issue Type Ma : Maintenance Deficiency Ob : Design & System Obsolescence En : Enforcement
--	--	---	--	---

Levee District No. 0002 (Glenn County)

View of landward side--outlet.

Page 5 of 34

**Flood Control Project Maintenance
Levee Inspections**

Levee Inspection Report By Mile - Fall 2017

Levee District No. 0002 (Glenn County)

Waterway	Bank	Unit Miles	Inspection Start/End	Inspector
Unit No. 01 Glenn County Sacramento River	Right	4.90	10/26/2017 10/26/2017	Bob Duffey

LM Start	0.61	Rating **	M	Issue No.	55
LM End	0.61	Issue Type +	En	Location *	
Category	Supplemental			GPS Latitude/Longitude	
				Start	End
Item	DWR UCIP Field Study			39.422302 °	39.422302 °
				-122.011635 °	-122.011635 °
DWR ID					

Comment Code

Inspector Comment

FS_ID:38166
DS_ID:21184
EP_NO: N/A
Repair Type: Non-Urgent
Crossing Status: Found
UCIP Comments: Three pipes found in the pump house on landward side. Pump house appears to be no longer in use. Unable to locate pipes on waterward side. Will need to contact owner to determine status. Owner will need to coordinate with CVFPB regarding proper removal per Title 23 requirements.
FIELD_STRUCT_DESC: [Princeton-Cordora-Glenn Irrigation District: Schaad Pumping Plant] 2 of 3: 34-inch steel pipe sleeved through 36-inch steel pipe through the levee, 20.0 feet below the crown. Annular gap is grouted. Flap gate on landside (LS) end. Pump in pump house on LS slope. Rock revetment around outlet on waterside (WS) slope. (USACE-1955). This entry matches the Drainage or Irrigation Structure referenced in O&M manual (Station 41+47). Pipes sleeved through pre-existing pipes installed under Permit No. 2356 (1956). (Permit No. 2356-1956, Princeton-Codora-Glenn Irrigation District)
FS Date: 5/16/2013

LM Start	0.61	Rating **	M	Issue No.	55 (cont)
LM End	0.61	Issue Type +	En	Location *	

Photo 1 of 3 : UCIP_FA_2017_38166_69475.jpg



View of levee crown at crossing.

Photo 2 of 3 : UCIP_FA_2017_38166_69476.jpg



View of Princeton-Cordora-Glenn Irrigation District--Schaad Pumping Plant.

* Location LS : Land Side N/A : Not Applicable WS : Water Side CR : Crown		** Rating A : Acceptable N : Not Inspected/Rated M : Minimally Acceptable C : Corrected U : Unacceptable A/W : Acceptable but Monitor & Maintain		+ Issue Type Ma : Maintenance Deficiency Ob : Design & System Obsolescence En : Enforcement
--	--	---	--	---

**Flood Control Project Maintenance
Levee Inspections**

Levee Inspection Report By Mile - Fall 2017

Levee District No. 0002 (Glenn County)

Waterway	Bank	Unit Miles	Inspection Start/End	Inspector
Unit No. 01 Glenn County Sacramento River	Right	4.90	10/26/2017 10/26/2017	Bob Duffey

LM Start	0.61	Rating **	M	Issue No.	55 (cont)	
LM End	0.61	Issue Type +	En	Location *		
Category	Supplemental			GPS Latitude/Longitude		
				Start	End	
Item	DWR UCIP Field Study			39.422302 °	39.422302 °	
				-122.011635 °	-122.011635 °	
DWR ID						
Comment Code						
Inspector Comment						
FS_ID:38166 DS_ID:21184 EP_NO: N/A Repair Type: Non-Urgent Crossing Status: Found UCIP Comments: Three pipes found in the pump house on landward side. Pump house appears to be no longer in use. Unable to locate pipes on waterward side. Will need to contact owner to determine status. Owner will need to coordinate with CVFPB regarding proper removal per Title 23 requirements. FIELD_STRUCT_DESC: [Princeton-Cordora-Glenn Irrigation District: Schaad Pumping Plant] 2 of 3: 34-inch steel pipe sleeved through 36-inch steel pipe through the levee, 20.0 feet below the crown. Annular gap is grouted. Flap gate on landside (LS) end. Pump in pump house on LS slope. Rock revetment around outlet on waterside (WS) slope. (USACE-1955). This entry matches the Drainage or Irrigation Structure referenced in O&M manual (Station 41+47). Pipes sleeved through pre-existing pipes installed under Permit No. 2356 (1956). (Permit No. 2356-1956, Princeton-Codora-Glenn Irrigation District) FS Date: 5/16/2013						

Photo 3 of 3 : UCIP_FA_2017_38166_69477.jpg



View of landward side--outlet.

* Location LS : Land Side N/A : Not Applicable WS : Water Side CR : Crown	** Rating A : Acceptable M : Minimally Acceptable U : Unacceptable	N : Not Inspected/Rated C : Corrected A/W : Acceptable but Monitor & Maintain	+ Issue Type Ma : Maintenance Deficiency Ob : Design & System Obsolescence En : Enforcement
--	--	---	---

Levee District No. 0002 (Glenn County)

Page 8 of 34

**Flood Control Project Maintenance
Levee Inspections**

Levee Inspection Report By Mile - Fall 2017

Levee District No. 0002 (Glenn County)

Waterway	Bank	Unit Miles	Inspection Start/End	Inspector
Unit No. 01 Glenn County Sacramento River	Right	4.90	10/26/2017 10/26/2017	Bob Duffey

LM Start	0.61	Rating **	M	Issue No.	56 (cont)	
LM End	0.61	Issue Type +	En	Location *		
Category	Supplemental			GPS Latitude/Longitude		
				Start	End	
Item	DWR UCIP Field Study			39.422329 °	39.422329 °	
				-122.011637 °	-122.011637 °	
DWR ID						
Comment Code						
Inspector Comment						
FS_ID:38167 DS_ID:21171 EP_NO: N/A Repair Type: Non-Urgent Crossing Status: Found UCIP Comments: Three pipes found in the pump house on landward side. Pump house appears to be no longer in use. Unable to locate pipes on waterward side. Will need to contact owner to determine status. Owner will need to coordinate with CVFPB regarding proper removal per Title 23 requirements. FIELD_STRUCT_DESC: [Princeton-Cordora-Glenn Irrigation District: Schaad Pumping Plant] 3 of 3: 34-inch steel pipe sleeved through 36-inch steel pipe through the levee, 20.0 feet below the crown. Annular gap is grouted. Flap gate on landside (LS) end. Pump in pump house on LS slope. Rock revetment around outlet on waterside (WS) slope. (USACE-1955). This entry matches the Drainage or Irrigation Structure referenced in O&M manual (Station 41+47). Pipes sleeved through pre-existing pipes installed under Permit No. 2356 (1956). (Permit No. 2356-1956, Princetan-Codora-Glenn Irrigation District) FS Date: 5/16/2013						

Photo 3 of 3 : UCIP_FA_2017_38167_69478.jpg



View of landward side--outlet.

* Location LS : Land Side N/A : Not Applicable WS : Water Side CR : Crown	** Rating A : Acceptable M : Minimally Acceptable U : Unacceptable	N : Not Inspected/Rated C : Corrected A/W : Acceptable but Monitor & Maintain	+ Issue Type Ma : Maintenance Deficiency Ob : Design & System Obsolescence En : Enforcement
--	--	---	---

**Flood Control Project Maintenance
Levee Inspections**

Levee Inspection Report By Mile - Fall 2017

Levee District No. 0002 (Glenn County)

Waterway	Bank	Unit Miles	Inspection Start/End	Inspector
Unit No. 01 Glenn County Sacramento River	Right	4.90	10/26/2017 10/26/2017	Bob Duffey

LM Start	0.61	Rating **	M	Issue No.	57
LM End	0.61	Issue Type +	En	Location *	
Category	Supplemental			GPS Latitude/Longitude	
				Start	End
Item	DWR UCIP Field Study			39.422350 °	39.422350 °
				-122.011637 °	-122.011637 °
DWR ID					
Comment Code					
Inspector Comment					
FS_ID:38168					
DS_ID:21182					
EP_NO: N/A					
Repair Type: Non-Urgent					
Crossing Status: Indicator Found					
UCIP Comments: Unable to verify if the pipes inside the existing pump house correlate to 24-inch installed in 1955. Three pipes found in the pump house on landward side. Pump house appears to be no longer in use. Unable to locate pipes on waterward side. Will need to contact owner to determine status.					
FIELD_STRUCT_DESC: [Pumping Plant] 24-inch steel pipe through the levee, 27.3 feet below the crown. Flap gate on landside (LS). Pump in pump house on landside (LS). (USACE-1955). This entry matches the Drainage or Irrigation Structure referenced in O&M manual (Station 41+47).					
FS Date: 5/16/2013					

Photo 1 of 3 : UCIP_FA_2017_38168_69491.jpg



View of levee crown with marker on waterward side.

LM Start	0.61	Rating **	M	Issue No.	57 (cont)
LM End	0.61	Issue Type +	En	Location *	

Photo 2 of 3 : UCIP_FA_2017_38168_69493.jpg



View of Princeton-Cordora-Glenn Irrigation District-Schaad Pumping Plant.

* Location LS : Land Side N/A : Not Applicable WS : Water Side CR : Crown	** Rating A : Acceptable M : Minimally Acceptable U : Unacceptable	N : Not Inspected/Rated C : Corrected A/W : Acceptable but Monitor & Maintain	+ Issue Type Ma : Maintenance Deficiency Ob : Design & System Obsolescence En : Enforcement
--	--	---	---

**Flood Control Project Maintenance
Levee Inspections**

Levee Inspection Report By Mile - Fall 2017

Levee District No. 0002 (Glenn County)

Waterway	Bank	Unit Miles	Inspection Start/End	Inspector
Unit No. 01 Glenn County Sacramento River	Right	4.90	10/26/2017 10/26/2017	Bob Duffey

LM Start	0.61	Rating **	M	Issue No.	57 (cont)	
LM End	0.61	Issue Type +	En	Location *		
Category	Supplemental			GPS Latitude/Longitude		
				Start	End	
Item	DWR UCIP Field Study			39.422350 °	39.422350 °	
				-122.011637 °	-122.011637 °	
DWR ID						
Comment Code						
Inspector Comment						
FS_ID:38168 DS_ID:21182 EP_NO: N/A Repair Type: Non-Urgent Crossing Status: Indicator Found UCIP Comments: Unable to verify if the pipes inside the existing pump house correlate to 24-inch installed in 1955. Three pipes found in the pump house on landward side. Pump house appears to be no longer in use. Unable to locate pipes on waterward side. Will need to contact owner to determine status. FIELD_STRUCT_DESC: [Pumping Plant] 24-inch steel pipe through the levee, 27.3 feet below the crown. Flap gate on landside (LS). Pump in pump house on landside (LS). (USACE-1955). This entry matches the Drainage or Irrigation Structure referenced in O&M manual (Station 41+47). FS Date: 5/16/2013						

Photo 3 of 3 : UCIP_FA_2017_38168_69486.jpg



View of landward side--outlet.

LM Start	1.03	Rating **	M	Issue No.	58
LM End	1.03	Issue Type +	En	Location *	
Category	Supplemental			GPS Latitude/Longitude	
				Start	End
Item	DWR UCIP Field Study			39.428441 °	39.428441 °
				-122.011032 °	-122.011032 °
DWR ID					
Comment Code					
Inspector Comment					
FS_ID:44170 DS_ID:21177 EP_NO: 9723 Repair Type: Non-Urgent Crossing Status: Indicator Found UCIP Comments: Owner is listed as Pacific Bell however sign lists AT&T as owner, need to contact owner to determine if permit was updated or if this crossing is listed under new permit. Unable to confirm if 2 crossings are present at this site. FIELD_STRUCT_DESC: Buried telephone cable through the levee at unknown depth. Telephone pole and junction box on landside (LS) toe. This line was retained under an automatic board order (ABO) (Permit No. 9723-1974, Pacific Telephone Company). FS Date: 5/16/2013					

Photo 1 of 3 : UCIP_FA_2017_44170_72602.jpg



Indicators of existing line visible on slope.

* Location LS : Land Side N/A : Not Applicable WS : Water Side CR : Crown	** Rating A : Acceptable M : Minimally Acceptable U : Unacceptable	N : Not Inspected/Rated C : Corrected A/W : Acceptable but Monitor & Maintain	+ Issue Type Ma : Maintenance Deficiency Ob : Design & System Obsolescence En : Enforcement
--	--	---	---

**Flood Control Project Maintenance
Levee Inspections**

Levee Inspection Report By Mile - Fall 2017

Levee District No. 0002 (Glenn County)

Waterway	Bank	Unit Miles	Inspection Start/End	Inspector
Unit No. 01 Glenn County Sacramento River	Right	4.90	10/26/2017 10/26/2017	Bob Duffey

LM Start	1.03	Rating **	M	Issue No.	58 (cont)	
LM End	1.03	Issue Type +	En	Location *		
Category	Supplemental			GPS Latitude/Longitude		
				Start	End	
Item	DWR UCIP Field Study			39.428441 °	39.428441 °	
				-122.011032 °	-122.011032 °	
DWR ID						
Comment Code						
Inspector Comment						
FS_ID:44170						
DS_ID:21177						
EP_NO: 9723						
Repair Type: Non-Urgent						
Crossing Status: Indicator Found						
UCIP Comments: Owner is listed as Pacific Bell however sign lists AT&T as owner, need to contact owner to determine if permit was updated or if this crossing is listed under new permit. Unable to confirm if 2 crossings are present at this site.						
FIELD_STRUCT_DESC: Buried telephone cable through the levee at unknown depth. Telephone pole and junction box on landside (LS) toe. This line was retained under an automatic board order (ABO) (Permit No. 9723-1974, Pacific Telephone Company).						
FS Date: 5/16/2013						

LM Start	1.03	Rating **	M	Issue No.	58 (cont)
LM End	1.03	Issue Type +	En	Location *	

Photo 2 of 3 : UCIP_FA_2017_44170_72601.jpg



AT&T underground cable line.

Photo 3 of 3 : UCIP_FA_2017_44170_72600.jpg



Sign lists Pacific Telephone system.

* Location LS : Land Side N/A : Not Applicable WS : Water Side CR : Crown	** Rating A : Acceptable M : Minimally Acceptable U : Unacceptable	N : Not Inspected/Rated C : Corrected A/W : Acceptable but Monitor & Maintain	+ Issue Type Ma : Maintenance Deficiency Ob : Design & System Obsolescence En : Enforcement
--	--	---	---

**Flood Control Project Maintenance
Levee Inspections**

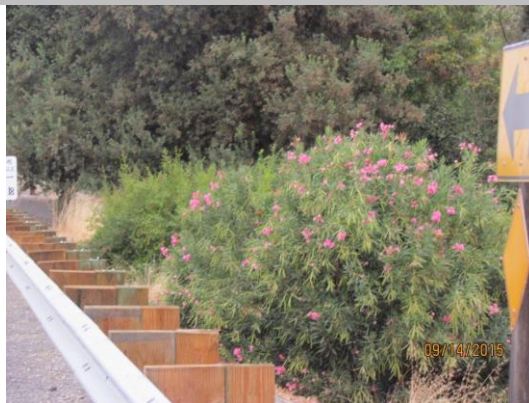
Levee Inspection Report By Mile - Fall 2017

Levee District No. 0002 (Glenn County)

Waterway	Bank	Unit Miles	Inspection Start/End	Inspector
Unit No. 01 Glenn County Sacramento River	Right	4.90	10/26/2017 10/26/2017	Bob Duffey

LM Start	1.03	Rating **	M	Issue No.	30
LM End	1.03	Issue Type +	En	Location *	WS
Category	Earthen Levee			GPS Latitude/Longitude	
				Start	End
Item	Vegetation			39.428445 °	39.428445 °
				-122.010972 °	-122.010972 °
DWR ID	DWR_LD0002_01_f_2015_30				
Comment Code					
V6 : Landscaping					
Inspector Comment					
Remove the oleanders from the waterside slope.					

Photo 1 of 1 : FA_2017_LD0002_28_30_20170911_00015.jpg



View of the oleanders along the waterside slope.

LM Start	1.15	Rating **	M	Issue No.	29
LM End	1.15	Issue Type +	En	Location *	WS
Category	Earthen Levee			GPS Latitude/Longitude	
				Start	End
Item	Encroachments			39.430098 °	39.430098 °
				-122.010828 °	-122.010828 °
DWR ID	DWR_LD0002_01_s_2017_29				
Comment Code					
TR : Tree or limb					
Inspector Comment					
Remove the tree from the waterside slope and toe.					

Photo 1 of 1 : FA_2017_LD0002_28_29_20170911_00014.jpg



View of the tree on the water side slope and toe.

LM Start	1.24	Rating **	M	Issue No.	40
LM End	1.24	Issue Type +	Ma	Location *	WS
Category	Earthen Levee			GPS Latitude/Longitude	
				Start	End
Item	Encroachments			39.431499 °	39.431499 °
				-122.010803 °	-122.010803 °
DWR ID	DWR_LD0002_01_f_2013_40				
Comment Code					
TR : Tree or limb					
Inspector Comment					
Remove the tree limbs from the waterside slope.					

Photo 1 of 2 : FA_2017_LD0002_28_40_20170911_00018.jpg



View of the downed tree limb along the slope of the levee.

* Location LS : Land Side N/A : Not Applicable WS : Water Side CR : Crown		** Rating A : Acceptable M : Minimally Acceptable U : Unacceptable N : Not Inspected/Rated C : Corrected A/W : Acceptable but Monitor & Maintain		+ Issue Type Ma : Maintenance Deficiency Ob : Design & System Obsolescence En : Enforcement	
--	--	---	--	---	--

**Flood Control Project Maintenance
Levee Inspections**

Levee Inspection Report By Mile - Fall 2017

Levee District No. 0002 (Glenn County)

Waterway	Bank	Unit Miles	Inspection Start/End	Inspector
Unit No. 01 Glenn County Sacramento River	Right	4.90	10/26/2017 10/26/2017	Bob Duffey

LM Start	1.52	Rating **	U	Issue No.	15 (cont)	
LM End	1.60	Issue Type +	Ma	Location *	LS	
Category	Earthen Levee			GPS Latitude/Longitude		
				Start		End
Item	Animal Control			39.435485 °		39.436643 °
				-122.010640 °		-122.010498 °
DWR ID	DWR_LD0002_01_f_2012_15					
Comment Code						
A3 : No rodents visible, but rodent burrows visible; need to backfill and compact or grout burrows.						
Inspector Comment						
Repair the rodent holes along the landside slope.						

Photo 2 of 2 : FA_2017_LD0002_28_15_20170911_00008.jpg



View of the rodent holes along the landside slope.

LM Start	1.59	Rating **	A/W	Issue No.	41
LM End	1.59	Issue Type +	Ma	Location *	WS
Category	Earthen Levee			GPS Latitude/Longitude	
				Start	End
Item	Animal Control			39.436550 °	39.436550 °
				-122.010490 °	-122.010490 °
DWR ID	DWR_LD0002_01_f_2016_41				
Comment Code					
A3 : No rodents visible, but rodent burrows visible; need to backfill and compact or grout burrows.					
Inspector Comment					

No Photos

LM Start	1.63	Rating **	M	Issue No.	32
LM End	1.63	Issue Type +	En	Location *	WS
Category	Earthen Levee			GPS Latitude/Longitude	
				Start	End
Item	Encroachments			39.437148 °	39.437148 °
				-122.010475 °	-122.010475 °
DWR ID	DWR_LD0002_01_f_2017_32				
Comment Code					
PR : Prunings					
Inspector Comment					
Remove the prunings from the waterside slope.					

Photo 1 of 1 : FA_2017_LD0002_28_32_20171030_00056.jpg



View of the prunings along the waterside slope.

* Location LS : Land Side N/A : Not Applicable WS : Water Side CR : Crown		** Rating A : Acceptable M : Minimally Acceptable U : Unacceptable N : Not Inspected/Rated C : Corrected A/W : Acceptable but Monitor & Maintain		+ Issue Type Ma : Maintenance Deficiency Ob : Design & System Obsolescence En : Enforcement	
--	--	---	--	---	--

**Flood Control Project Maintenance
Levee Inspections**

Levee Inspection Report By Mile - Fall 2017

Levee District No. 0002 (Glenn County)

Waterway	Bank	Unit Miles	Inspection Start/End	Inspector
Unit No. 01 Glenn County Sacramento River	Right	4.90	10/26/2017 10/26/2017	Bob Duffey

LM Start	2.01	Rating **	C	Issue No.	36
LM End	2.01	Issue Type +	Ma	Location *	WS
Category	Earthen Levee			GPS Latitude/Longitude	
				Start	End
Item	Encroachments			39.441740 °	39.441740 °
				-122.012834 °	-122.012834 °
DWR ID	DWR_LD0002_01_s_2016_36				
Comment Code					
TR : Tree or limb					
Inspector Comment					
Downed cottonwood tree on waterside toe and slope					

No Photos

LM Start	2.39	Rating **	M	Issue No.	59
LM End	2.39	Issue Type +	En	Location *	
Category	Supplemental			GPS Latitude/Longitude	
				Start	End
Item	DWR UCIP Field Study			39.446534 °	39.446534 °
				-122.016052 °	-122.016052 °
DWR ID					
Comment Code					
Inspector Comment					
FS_ID:42085					
DS_ID:21190					
EP_NO: N/A					
Repair Type: Non-Urgent					
Crossing Status: Not Found					
UCIP Comments: Dense vegetation limits the inspector's visibility to identify signs of pipe failure (leaks) along the waterward slope.					
Recommend coming back in the Fall to search for crossing.					
FIELD_STRUCT_DESC: Pump and tank in concrete box on the waterward side. Power poles on the waterward slope. Channel on waterward side runs parallel to the levee.					
FS Date: 5/16/2013					

No Photos

* Location LS : Land Side N/A : Not Applicable WS : Water Side CR : Crown	** Rating A : Acceptable M : Minimally Acceptable U : Unacceptable	N : Not Inspected/Rated C : Corrected A/W : Acceptable but Monitor & Maintain	+ Issue Type Ma : Maintenance Deficiency Ob : Design & System Obsolescence En : Enforcement
--	--	---	---

**Flood Control Project Maintenance
Levee Inspections**

Levee Inspection Report By Mile - Fall 2017

Levee District No. 0002 (Glenn County)

Waterway	Bank	Unit Miles	Inspection Start/End	Inspector
Unit No. 01 Glenn County Sacramento River	Right	4.90	10/26/2017 10/26/2017	Bob Duffey

LM Start	2.77	Rating **	C	Issue No.	42
LM End	2.77	Issue Type +	Ma	Location *	WS
Category	Earthen Levee			GPS Latitude/Longitude	
				Start	End
Item	Animal Control			39.451841 °	39.451841 °
				-122.017120 °	-122.017120 °
DWR ID	DWR_LD0002_01_f_2017_42				
Comment Code					
A3 : No rodents visible, but rodent burrows visible; need to backfill and compact or grout burrows.					
Inspector Comment					
The rodent holes was repaired along the waterside slope.					

No Photos

LM Start	2.79	Rating **	M	Issue No.	60	
LM End	2.79	Issue Type +	En	Location *		
Category	Supplemental			GPS Latitude/Longitude		
				Start	End	
Item	DWR UCIP Field Study			39.452180 °	39.452180 °	
				-122.017100 °	-122.017100 °	
DWR ID						
Comment Code						
Inspector Comment						
FS_ID:42086 DS_ID:21183 EP_NO: N/A Repair Type: Non-Urgent Crossing Status: Not Found UCIP Comments: Unable to find any signs of crossing. LMA noted that crossing might have been grouted during the adjacent wildlife project. Dense vegetation limits the inspector's visibility to identify signs of pipe failure (leaks) along the waterward slope. Recommend coming back in the Fall to search for crossing. FIELD_STRUCT_DESC: 10-inch steel pipe through the levee, approximately 17 feet below the crown. (USACE-1955). In 2012, LMA noted that this crossing might have been grouted during the adjacent wildlife project in unknown year however, no records are available to confirm. This entry matches the Drainage or Irrigation Structure referenced in O&M manual (Station 111+17). FS Date: 5/16/2013						

No Photos

* Location LS : Land Side N/A : Not Applicable WS : Water Side CR : Crown	** Rating A : Acceptable M : Minimally Acceptable U : Unacceptable	N : Not Inspected/Rated C : Corrected A/W : Acceptable but Monitor & Maintain	+ Issue Type Ma : Maintenance Deficiency Ob : Design & System Obsolescence En : Enforcement
--	--	---	---

**Flood Control Project Maintenance
Levee Inspections**

Levee Inspection Report By Mile - Fall 2017

Levee District No. 0002 (Glenn County)

Waterway	Bank	Unit Miles	Inspection Start/End	Inspector
Unit No. 01 Glenn County Sacramento River	Right	4.90	10/26/2017 10/26/2017	Bob Duffey

LM Start	2.89	Rating **	M	Issue No.	5
LM End	2.89	Issue Type +	Ma	Location *	LS
Category	Earthen Levee			GPS Latitude/Longitude	
				Start	End
Item	Encroachments			39.453490 °	39.453490 °
				-122.016457 °	-122.016457 °
DWR ID	DWR_LD0002_01_f_2015_5				
Comment Code					
PR : Prunings					
Inspector Comment					

Photo 1 of 1 : FA_2017_LD0002_28_5_20170911_00002.jpg



View of the prunings along the landside toe.

LM Start	2.91	Rating **	U	Issue No.	2
LM End	2.96	Issue Type +	Ma	Location *	LS
Category	Earthen Levee			GPS Latitude/Longitude	
				Start	End
Item	Animal Control			39.453595 °	39.454003 °
				-122.016273 °	-122.015503 °
DWR ID	DWR_LD0002_01_f_2015_2				
Comment Code					
A3 : No rodents visible, but rodent burrows visible; need to backfill and compact or grout burrows.					
Inspector Comment					
Repair the rodent holes along the landside slope.					

Photo 1 of 2 : FA_2017_LD0002_28_2_20171030_00058.jpg



View of the rodent holes along the landside slope.

LM Start	2.91	Rating **	U	Issue No.	2 (cont)
LM End	2.96	Issue Type +	Ma	Location *	LS

Photo 2 of 2 : FA_2017_LD0002_28_2_20170911_00001.jpg



View of the rodent holes and bait station along the landside slope.

* Location LS : Land Side N/A : Not Applicable WS : Water Side CR : Crown		** Rating A : Acceptable M : Minimally Acceptable U : Unacceptable		N : Not Inspected/Rated C : Corrected A/W : Acceptable but Monitor & Maintain		+ Issue Type Ma : Maintenance Deficiency Ob : Design & System Obsolescence En : Enforcement	
--	--	--	--	---	--	---	--

**Flood Control Project Maintenance
Levee Inspections**

Levee Inspection Report By Mile - Fall 2017

Levee District No. 0002 (Glenn County)

Waterway	Bank	Unit Miles	Inspection Start/End	Inspector
Unit No. 01 Glenn County Sacramento River	Right	4.90	10/26/2017 10/26/2017	Bob Duffey

LM Start	3.12	Rating **	M	Issue No.	33
LM End	3.12	Issue Type +	En	Location *	LS
Category	Earthen Levee			GPS Latitude/Longitude	
				Start	End
Item	Encroachments			39.455707 °	39.455707 °
				-122.013497 °	-122.013497 °
DWR ID	DWR_LD0002_01_f_2017_33				
Comment Code					
PR : Prunings					
Inspector Comment					
Remove the prunings from the landside slope.					

Photo 1 of 1 : FA_2017_LD0002_28_33_20171030_00059.jpg



View of the prunings along the landside toe.

LM Start	3.16	Rating **	U	Issue No.	12
LM End	3.16	Issue Type +	Ma	Location *	LS
Category	Earthen Levee			GPS Latitude/Longitude	
				Start	End
Item	Animal Control			39.456004 °	39.456004 °
				-122.012776 °	-122.012776 °
DWR ID	DWR_LD0002_01_s_2013_12				
Comment Code					
A1 : Exterminate rodents and backfill and compact or grout burrows.					
Inspector Comment					
Repair the rodent holes along landside slope.					

Photo 1 of 1 : FA_2017_LD0002_28_12_20170911_00006.jpg



View of the rodent activity along the landside slope.

LM Start	3.21	Rating **	A/W	Issue No.	37
LM End	3.21	Issue Type +	Ma	Location *	LS
Category	Earthen Levee			GPS Latitude/Longitude	
				Start	End
Item	Trim / Thin Trees			39.456170 °	39.456170 °
				-122.011908 °	-122.011908 °
DWR ID	DWR_LD0002_01_s_2016_37				
Comment Code					
T1 : Trim trees to at least five feet above ground level.					
Inspector Comment					
Willow branches trimmed on L/S slope					

No Photos

* Location LS : Land Side N/A : Not Applicable WS : Water Side CR : Crown		** Rating A : Acceptable M : Minimally Acceptable U : Unacceptable		N : Not Inspected/Rated C : Corrected A/W : Acceptable but Monitor & Maintain		+ Issue Type Ma : Maintenance Deficiency Ob : Design & System Obsolescence En : Enforcement	
---	--	---	--	---	--	--	--

**Flood Control Project Maintenance
Levee Inspections**

Levee Inspection Report By Mile - Fall 2017

Levee District No. 0002 (Glenn County)

Waterway	Bank	Unit Miles	Inspection Start/End	Inspector
Unit No. 01 Glenn County Sacramento River	Right	4.90	10/26/2017 10/26/2017	Bob Duffey

LM Start	3.23	Rating **	M	Issue No.	16
LM End	3.30	Issue Type +	Ma	Location *	LS
Category	Earthen Levee			GPS Latitude/Longitude	
				Start	End
Item	Animal Control			39.456192 °	39.456272 °
				-122.011445 °	-122.010163 °
DWR ID	DWR_LD0002_01_f_2012_16				
Comment Code					
A3 : No rodents visible, but rodent burrows visible; need to backfill and compact or grout burrows.					
Inspector Comment					
Grout or fill the rodent holes.					

Photo 1 of 2 : FA_2017_LD0002_28_16_20170911_00010.jpg



View of the rodent holes along the landside slope.

LM Start	3.23	Rating **	M	Issue No.	16 (cont)
LM End	3.30	Issue Type +	Ma	Location *	LS

Photo 2 of 2 : FA_2017_LD0002_28_16_20170911_00011.jpg



View of the rodent holes along the landside slope.

LM Start	3.24	Rating **	M	Issue No.	38
LM End	3.24	Issue Type +	Ma	Location *	LS
Category	Earthen Levee			GPS Latitude/Longitude	
				Start	End
Item	Encroachments			39.456202 °	39.456202 °
				-122.011314 °	-122.011314 °
DWR ID	DWR_LD0002_01_s_2016_38				
Comment Code					
PR : Prunings					
Inspector Comment					

No Photos

* Location LS : Land Side N/A : Not Applicable WS : Water Side CR : Crown		** Rating A : Acceptable M : Minimally Acceptable U : Unacceptable N : Not Inspected/Rated C : Corrected A/W : Acceptable but Monitor & Maintain		+ Issue Type Ma : Maintenance Deficiency Ob : Design & System Obsolescence En : Enforcement	
---	--	--	--	--	--

**Flood Control Project Maintenance
Levee Inspections**

Levee Inspection Report By Mile - Fall 2017

Levee District No. 0002 (Glenn County)

Waterway	Bank	Unit Miles	Inspection Start/End	Inspector
Unit No. 01 Glenn County Sacramento River	Right	4.90	10/26/2017 10/26/2017	Bob Duffey

LM Start	3.37	Rating **	M	Issue No.	61
LM End	3.37	Issue Type +	En	Location *	
Category	Supplemental			GPS Latitude/Longitude	
				Start	End
Item	DWR UCIP Field Study			39.456704 °	39.456704 °
				-122.009621 °	-122.009621 °
DWR ID					
Comment Code					
Inspector Comment					
FS_ID:44186 DS_ID:21188 EP_NO: 12444 Repair Type: Non-Urgent Crossing Status: Indicator Found UCIP Comments: Needs markers 10-feet off both levee toes. FIELD_STRUCT_DESC: Steel conduit through the levee, 2.5 feet below the crown. Conduit extends to pole on waterside (WS). Cut in pavement visible at levee crown (Permit No. 12444-1978) FS Date: 4/1/2015					

Photo 1 of 2 : UCIP_FA_2017_44186_73606.jpg



Conduit may be visible on pole about 1000-feet west of levee crown.

LM Start	3.37	Rating **	M	Issue No.	61 (cont)
LM End	3.37	Issue Type +	En	Location *	

Photo 2 of 2 : UCIP_FA_2017_44186_73605.jpg



Cut in pavement at levee crown good indicator of crossing.

* Location LS : Land Side N/A : Not Applicable WS : Water Side CR : Crown	** Rating A : Acceptable M : Minimally Acceptable U : Unacceptable	N : Not Inspected/Rated C : Corrected A/W : Acceptable but Monitor & Maintain	+ Issue Type Ma : Maintenance Deficiency Ob : Design & System Obsolescence En : Enforcement
--	--	---	---

**Flood Control Project Maintenance
Levee Inspections**

Levee Inspection Report By Mile - Fall 2017

Levee District No. 0002 (Glenn County)

Waterway	Bank	Unit Miles	Inspection Start/End	Inspector
Unit No. 01 Glenn County Sacramento River	Right	4.90	10/26/2017 10/26/2017	Bob Duffey

LM Start	3.37	Rating **	M	Issue No.	62
LM End	3.37	Issue Type +	En	Location *	
Category	Supplemental			GPS Latitude/Longitude	
				Start	End
Item	DWR UCIP Field Study			39.456720 °	39.456720 °
				-122.009630 °	-122.009630 °
DWR ID					
Comment Code					
Inspector Comment					
FS_ID:44185 DS_ID:21175 EP_NO: 5376 Repair Type: Non-Urgent Crossing Status: Indicator Found UCIP Comments: Conduit needs markers ten feet off both levee toes. FIELD_STRUCT_DESC: Three 3.5-inch steel conduits through the levee, 3.0 feet below the crown. Metal cutoff wall around conduits near center of levee. Conduits are welded to the cutoff wall, extending only between the levee shoulders under the crown. Cut in pavement visible at crown. Cables extend to pole on waterside (WS). (Permit No. 5376-1967, Pacific Telephone & Telegraph Co.) FS Date: 4/1/2015					

Photo 1 of 2 : UCIP_FA_2017_44185_73608.jpg



Conduit may be visible at pole about 1000-feet west of crown.

LM Start	3.37	Rating **	M	Issue No.	62 (cont)
LM End	3.37	Issue Type +	En	Location *	

Photo 2 of 2 : UCIP_FA_2017_44185_73607.jpg



Cut in pavement visible at crown good indicator of crossing location.

* Location LS : Land Side N/A : Not Applicable WS : Water Side CR : Crown	** Rating A : Acceptable M : Minimally Acceptable U : Unacceptable	N : Not Inspected/Rated C : Corrected A/W : Acceptable but Monitor & Maintain	+ Issue Type Ma : Maintenance Deficiency Ob : Design & System Obsolescence En : Enforcement
--	--	---	---

**Flood Control Project Maintenance
Levee Inspections**

Levee Inspection Report By Mile - Fall 2017

Levee District No. 0002 (Glenn County)

Waterway	Bank	Unit Miles	Inspection Start/End	Inspector
Unit No. 01 Glenn County Sacramento River	Right	4.90	10/26/2017 10/26/2017	Bob Duffey

LM Start	3.44	Rating **	U	Issue No.	27
LM End	3.52	Issue Type +	Ma	Location *	LS
Category	Earthen Levee			GPS Latitude/Longitude	
				Start	End
Item	Animal Control			39.457692 °	39.458705 °
				-122.009517 °	-122.009872 °
DWR ID	DWR_LD0002_01_s_2014_27				
Comment Code					
A3 : No rodents visible, but rodent burrows visible; need to backfill and compact or grout burrows.					
Inspector Comment					
Repair the rodent holes on landside slope.					

Photo 1 of 2 : FA_2017_LD0002_28_27_20170911_00012.jpg



View of the rodent activity along the landside slope.

LM Start	3.44	Rating **	U	Issue No.	27 (cont)
LM End	3.52	Issue Type +	Ma	Location *	LS

Photo 2 of 2 : FA_2017_LD0002_28_27_20170911_00013.jpg



View of the rodent holes along the landside slope.

LM Start	3.47	Rating **	M	Issue No.	39
LM End	3.57	Issue Type +	En	Location *	LS
Category	Earthen Levee			GPS Latitude/Longitude	
				Start	End
Item	Encroachments			39.458121 °	39.459331 °
				-122.009534 °	-122.010504 °
DWR ID	DWR_LD0002_01_s_2016_39				
Comment Code					
MA : Material					
Inspector Comment					
Walnut hulls spread in low piles along levee toe will make access difficult, should be removed.					

No Photos

* Location LS : Land Side N/A : Not Applicable WS : Water Side CR : Crown		** Rating A : Acceptable M : Minimally Acceptable U : Unacceptable N : Not Inspected/Rated C : Corrected A/W : Acceptable but Monitor & Maintain		+ Issue Type Ma : Maintenance Deficiency Ob : Design & System Obsolescence En : Enforcement	
---	--	--	--	--	--

**Flood Control Project Maintenance
Levee Inspections**

Levee Inspection Report By Mile - Fall 2017

Levee District No. 0002 (Glenn County)

Waterway	Bank	Unit Miles	Inspection Start/End	Inspector
Unit No. 01 Glenn County Sacramento River	Right	4.90	10/26/2017 10/26/2017	Bob Duffey

LM Start	3.53	Rating **	U	Issue No.	13
LM End	3.57	Issue Type +	Ma	Location *	LS
Category	Earthen Levee			GPS Latitude/Longitude	
				Start	End
Item	Animal Control			39.458803 °	39.459305 °
				-122.009980 °	-122.010511 °
DWR ID	DWR_LD0002_01_s_2013_13				
Comment Code					
A3 : No rodents visible, but rodent burrows visible; need to backfill and compact or grout burrows.					
Inspector Comment					

Photo 1 of 1 : FA_2017_LD0002_28_13_20170911_00007.jpg



View of the rodent activity along the landside slope.

LM Start	3.57	Rating **	M	Issue No.	45
LM End	3.57	Issue Type +	En	Location *	LS
Category	Earthen Levee			GPS Latitude/Longitude	
				Start	End
Item	Encroachments			39.459347 °	39.459347 °
				-122.010513 °	-122.010513 °
DWR ID	DWR_LD0002_01_f_2016_45				
Comment Code					
MA : Material					
Inspector Comment					
approx. 10 cubic yards of soil material placed at the landside toe of the levee					

No Photos

LM Start	3.60	Rating **	M	Issue No.	46
LM End	3.60	Issue Type +	Ma	Location *	WS
Category	Earthen Levee			GPS Latitude/Longitude	
				Start	End
Item	Encroachments			39.459678 °	39.459678 °
				-122.010785 °	-122.010785 °
DWR ID	DWR_LD0002_01_f_2016_46				
Comment Code					
PR : Prunings					
Inspector Comment					
Remove the tree from the waterside slope and toe.					

Photo 1 of 2 : FA_2017_LD0002_28_46_20170911_00021.jpg



View of a fallen tree along the waterside slope.

* Location LS : Land Side N/A : Not Applicable WS : Water Side CR : Crown		** Rating A : Acceptable M : Minimally Acceptable U : Unacceptable N : Not Inspected/Rated C : Corrected A/W : Acceptable but Monitor & Maintain		+ Issue Type Ma : Maintenance Deficiency Ob : Design & System Obsolescence En : Enforcement	
--	--	---	--	---	--

**Flood Control Project Maintenance
Levee Inspections**

Levee Inspection Report By Mile - Fall 2017

Levee District No. 0002 (Glenn County)

Waterway	Bank	Unit Miles	Inspection Start/End	Inspector
Unit No. 01 Glenn County Sacramento River	Right	4.90	10/26/2017 10/26/2017	Bob Duffey

LM Start	3.60	Rating **	M	Issue No.	46 (cont)	
LM End	3.60	Issue Type +	Ma	Location *	WS	
Category	Earthen Levee			GPS Latitude/Longitude		
				Start		End
Item	Encroachments			39.459678 °		39.459678 °
				-122.010785 °		-122.010785 °
DWR ID	DWR_LD0002_01_f_2016_46					
Comment Code						
PR : Prunings						
Inspector Comment						
Remove the tree from the waterside slope and toe.						

Photo 2 of 2 : FA_2017_LD0002_28_46_20170911_00022.jpg



View of the tree along the waterside slope and toe.

LM Start	3.60	Rating **	M	Issue No.	43
LM End	3.60	Issue Type +	En	Location *	LS
Category	Earthen Levee			GPS Latitude/Longitude	
				Start	End
Item	Encroachments			39.459720 °	39.459720 °
				-122.010812 °	-122.010812 °
DWR ID	DWR_LD0002_01_s_2016_43				
Comment Code					
PR : Prunings					
Inspector Comment					

No Photos

* Location LS : Land Side N/A : Not Applicable WS : Water Side CR : Crown	** Rating A : Acceptable M : Minimally Acceptable U : Unacceptable	N : Not Inspected/Rated C : Corrected A/W : Acceptable but Monitor & Maintain	+ Issue Type Ma : Maintenance Deficiency Ob : Design & System Obsolescence En : Enforcement
--	--	---	---

**Flood Control Project Maintenance
Levee Inspections**

Levee Inspection Report By Mile - Fall 2017

Levee District No. 0002 (Glenn County)

Waterway	Bank	Unit Miles	Inspection Start/End	Inspector
Unit No. 01 Glenn County Sacramento River	Right	4.90	10/26/2017 10/26/2017	Bob Duffey

LM Start	3.73	Rating **	M	Issue No.	63	
LM End	3.73	Issue Type +	En	Location *		
Category	Supplemental			GPS Latitude/Longitude		
				Start	End	
Item	DWR UCIP Field Study			39.461509 °	39.461509 °	
				-122.011493 °	-122.011493 °	
DWR ID						
Comment Code						
Inspector Comment						
FS_ID:38178 DS_ID:21178 EP_NO: 16931 Repair Type: Non-Urgent Crossing Status: Indicator Found UCIP Comments: Inspector notes indicate that pipe was never installed through levee and application was closed. Steel pipe was not installed but detachable section was installed. The pipe section goes up and over levee. Permit 16931 file was closed in 2005 owner was unable to install pipe due to costs. Permit indicates that pipe was to be used for winter supply of irrigation water to landward side. Need to coordinate with DWR inspector--permit revised for this type of structure. FIELD_STRUCT_DESC: Crossing visible at location. Current structure differs from original request in Permit No. 16931. PVC connection visible on landside (LS) toe with cutoff valve. Pipe connects to 8-inch PVC pipe extending past LS toe. FS Date: 5/16/2013						

LM Start	3.73	Rating **	M	Issue No.	63 (cont)
LM End	3.73	Issue Type +	En	Location *	

Photo 1 of 3 : UCIP_FA_2017_38178_69502.jpg



View of pump system on landward side located behind tracker.

Photo 2 of 3 : UCIP_FA_2017_38178_69501.jpg



Pump system located near landward toe.

* Location LS : Land Side N/A : Not Applicable WS : Water Side CR : Crown		** Rating A : Acceptable M : Minimally Acceptable U : Unacceptable		N : Not Inspected/Rated C : Corrected A/W : Acceptable but Monitor & Maintain		+ Issue Type Ma : Maintenance Deficiency Ob : Design & System Obsolescence En : Enforcement	
--	--	--	--	---	--	---	--

**Flood Control Project Maintenance
Levee Inspections**

Levee Inspection Report By Mile - Fall 2017

Levee District No. 0002 (Glenn County)

Waterway	Bank	Unit Miles	Inspection Start/End	Inspector
Unit No. 01 Glenn County Sacramento River	Right	4.90	10/26/2017 10/26/2017	Bob Duffey

LM Start	3.73	Rating **	M	Issue No.	63 (cont)	
LM End	3.73	Issue Type +	En	Location *		
Category	Supplemental			GPS Latitude/Longitude		
				Start	End	
Item	DWR UCIP Field Study			39.461509 °	39.461509 °	
				-122.011493 °	-122.011493 °	
DWR ID						
Comment Code						
Inspector Comment						
FS_ID:38178 DS_ID:21178 EP_NO: 16931 Repair Type: Non-Urgent Crossing Status: Indicator Found UCIP Comments: Inspector notes indicate that pipe was never installed through levee and application was closed. Steel pipe was not installed but detachable section was installed. The pipe section goes up and over levee. Permit 16931 file was closed in 2005 owner was unable to install pipe due to costs. Permit indicates that pipe was to be used for winter supply of irrigation water to landward side. Need to coordinate with DWR inspector--permit revised for this type of structure. FIELD_STRUCT_DESC: Crossing visible at location. Current structure differs from original request in Permit No. 16931. PVC connection visible on landside (LS) toe with cutoff valve. Pipe connects to 8-inch PVC pipe extending past LS toe. FS Date: 5/16/2013						

Photo 3 of 3 : UCIP_FA_2017_38178_69500.jpg



Pipe connection capped with control valve located on landward toe.

LM Start	3.74	Rating **	M	Issue No.	64
LM End	3.74	Issue Type +	En	Location *	
Category	Supplemental			GPS Latitude/Longitude	
				Start	End
Item	DWR UCIP Field Study			39.461674 °	39.461674 °
				-122.011507 °	-122.011507 °
DWR ID					
Comment Code					
Inspector Comment					
FS_ID:38182 DS_ID:24659 EP_NO: N/A Repair Type: Non-Urgent Crossing Status: Found UCIP Comments: Need to contact owner to determine status of crossing. FIELD_STRUCT_DESC: 24-inch steel drainage pipe through levee at 2-feet below the crown. Pipe is exposed on waterside (WS) with air vent on the WS levee shoulder. Open pump is approximately 550 feet on the landside (LS) of the levee toe and concrete distribution pipe. (Permit No. 16280-1995, Mathew J. Southam/McGowan) FS Date: 5/16/2013					

Photo 1 of 3 : UCIP_FA_2017_38182_69537.jpg



View of waterward side.

* Location LS : Land Side N/A : Not Applicable WS : Water Side CR : Crown		** Rating A : Acceptable N : Not Inspected/Rated M : Minimally Acceptable C : Corrected U : Unacceptable A/W : Acceptable but Monitor & Maintain		+ Issue Type Ma : Maintenance Deficiency Ob : Design & System Obsolescence En : Enforcement
--	--	---	--	---

**Flood Control Project Maintenance
Levee Inspections**

Levee Inspection Report By Mile - Fall 2017

Levee District No. 0002 (Glenn County)

Waterway	Bank	Unit Miles	Inspection Start/End	Inspector
Unit No. 01 Glenn County Sacramento River	Right	4.90	10/26/2017 10/26/2017	Bob Duffey

LM Start	3.74	Rating **	M	Issue No.	64 (cont)	
LM End	3.74	Issue Type +	En	Location *		
Category	Supplemental			GPS Latitude/Longitude		
				Start	End	
Item	DWR UCIP Field Study			39.461674 °	39.461674 °	
				-122.011507 °	-122.011507 °	
DWR ID						
Comment Code						
Inspector Comment						
FS_ID:38182						
DS_ID:24659						
EP_NO: N/A						
Repair Type: Non-Urgent						
Crossing Status: Found						
UCIP Comments: Need to contact owner to determine status of crossing.						
FIELD_STRUCT_DESC: 24-inch steel drainage pipe through levee at 2-feet below the crown. Pipe is exposed on waterside (WS) with air vent on the WS levee shoulder. Open pump is approximately 550 feet on the landside (LS) of the levee toe and concrete distribution pipe. (Permit No. 16280-1995, Mathew J. Southam/McGowan)						
FS Date: 5/16/2013						

Photo 2 of 3 : UCIP_FA_2017_38182_69533.jpg



Pipe visible on waterward side.

LM Start	3.74	Rating **	M	Issue No.	64 (cont)
LM End	3.74	Issue Type +	En	Location *	

Photo 3 of 3 : UCIP_FA_2017_38182_69541.jpg



View of channel on waterward side.

* Location LS : Land Side N/A : Not Applicable WS : Water Side CR : Crown		** Rating A : Acceptable M : Minimally Acceptable U : Unacceptable N : Not Inspected/Rated C : Corrected A/W : Acceptable but Monitor & Maintain		+ Issue Type Ma : Maintenance Deficiency Ob : Design & System Obsolescence En : Enforcement
--	--	---	--	---

**Flood Control Project Maintenance
Levee Inspections**

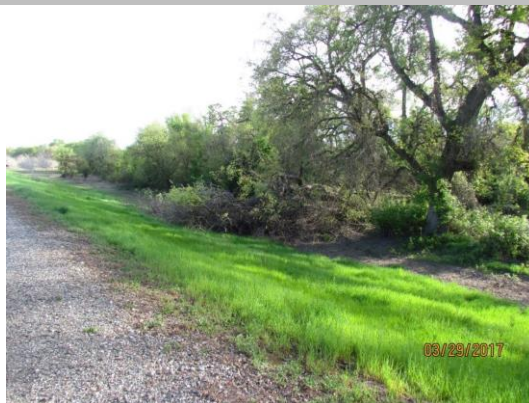
Levee Inspection Report By Mile - Fall 2017

Levee District No. 0002 (Glenn County)

Waterway	Bank	Unit Miles	Inspection Start/End	Inspector
Unit No. 01 Glenn County Sacramento River	Right	4.90	10/26/2017 10/26/2017	Bob Duffey

LM Start	3.94	Rating **	M	Issue No.	31
LM End	3.94	Issue Type +	En	Location *	WS
Category	Earthen Levee			GPS Latitude/Longitude	
				Start	End
Item	Encroachments			39.464548 °	39.464548 °
				-122.011420 °	-122.011420 °
DWR ID	DWR_LD0002_01_s_2017_31				
Comment Code					
TR : Tree or limb					
Inspector Comment					
Remove the tree from the waterside slope and toe.					

Photo 1 of 1 : FA_2017_LD0002_28_31_20170911_00016.jpg



View of the tree along the waterside slope and toe.

LM Start	3.95	Rating **	A	Issue No.	35
LM End	3.95	Issue Type +	Ma	Location *	LS
Category	Earthen Levee			GPS Latitude/Longitude	
				Start	End
Item	Vegetation			39.464675 °	39.464675 °
				-122.011385 °	-122.011385 °
DWR ID	DWR_LD0002_01_f_2017_35				
Comment Code					
V1 : Control annual grass and weeds on the levee slopes and easements.					
Inspector Comment					
The vegetation was removed from both slopes.					

Photo 1 of 1 : FA_2017_LD0002_28_35_20171030_00060.jpg



View of no vegetation on both slopes.

LM Start	4.02	Rating **	M	Issue No.	47
LM End	4.02	Issue Type +	Ma	Location *	LS
Category	Earthen Levee			GPS Latitude/Longitude	
				Start	End
Item	Animal Control			39.465622 °	39.465622 °
				-122.011246 °	-122.011246 °
DWR ID	DWR_LD0002_01_f_2016_47				
Comment Code					
A1 : Exterminate rodents and backfill and compact or grout burrows.					
Inspector Comment					

No Photos

* Location		** Rating		+ Issue Type	
LS : Land Side	N/A : Not Applicable	A : Acceptable	N : Not Inspected/Rated	Ma : Maintenance Deficiency	
WS : Water Side		M : Minimally Acceptable	C : Corrected	Ob : Design & System Obsolescence	
CR : Crown		U : Unacceptable	A/W : Acceptable but Monitor & Maintain	En : Enforcement	

**Flood Control Project Maintenance
Levee Inspections**

Levee Inspection Report By Mile - Fall 2017

Levee District No. 0002 (Glenn County)

Waterway	Bank	Unit Miles	Inspection Start/End	Inspector
Unit No. 01 Glenn County Sacramento River	Right	4.90	10/26/2017 10/26/2017	Bob Duffey

LM Start	4.02	Rating **	M	Issue No.	49
LM End	4.02	Issue Type +	En	Location *	WS
Category	Earthen Levee			GPS Latitude/Longitude	
				Start	End
Item	Encroachments			39.465687 °	39.465687 °
				-122.011257 °	-122.011257 °
DWR ID	DWR_LD0002_01_s _ 2017_49				
Comment Code					
TR : Tree or limb					
Inspector Comment					

No Photos

LM Start	4.05	Rating **	M	Issue No.	50
LM End	4.05	Issue Type +	En	Location *	WS
Category	Earthen Levee			GPS Latitude/Longitude	
				Start	End
Item	Encroachments			39.466158 °	39.466158 °
				-122.011335 °	-122.011335 °
DWR ID	DWR_LD0002_01_s _ 2017_50				
Comment Code					
TR : Tree or limb					
Inspector Comment					
Remove the tree from the waterside slope and toe.					

Photo 1 of 1 : FA_2017_LD0002_28_50_20170911_00023.jpg



View of the tree on the water sideslope and toe.

* Location LS : Land Side N/A : Not Applicable WS : Water Side CR : Crown		** Rating A : Acceptable M : Minimally Acceptable U : Unacceptable N : Not Inspected/Rated C : Corrected A/W : Acceptable but Monitor & Maintain		+ Issue Type Ma : Maintenance Deficiency Ob : Design & System Obsolescence En : Enforcement
--	--	---	--	---

**Flood Control Project Maintenance
Levee Inspections**

Levee Inspection Report By Mile - Fall 2017

Levee District No. 0002 (Glenn County)

Waterway	Bank	Unit Miles	Inspection Start/End	Inspector
Unit No. 01 Glenn County Sacramento River	Right	4.90	10/26/2017 10/26/2017	Bob Duffey

LM Start	4.32	Rating **	M	Issue No.	65	
LM End	4.32	Issue Type +	En	Location *		
Category	Supplemental			GPS Latitude/Longitude		
				Start	End	
Item	DWR UCIP Field Study			39.469908 °	39.469908 °	
				-122.012117 °	-122.012117 °	
DWR ID						
Comment Code						
Inspector Comment						
FS_ID:44188						
DS_ID:21181						
EP_NO: 18072						
Repair Type: Non-Urgent						
Crossing Status: Indicator Found						
UCIP Comments: Pipe needs better markers at pipe crossing.						
FIELD_STRUCT_DESC: 6-inch steel irrigation pipe through the levee,						
2.0 feet below the levee. Well, pump, and vent visible on landside (LS)						
toe. Vent visible just off waterside (WS) toe. (Permit No. 18072-2006,						
McCowan & Southam)						
FS Date: 4/1/2015						

Photo 1 of 3 : UCIP_FA_2017_44188_69544.jpg



3-inch PVC pipe and vent exposed on waterward toe, likely in alignment with this crossing.

LM Start	4.32	Rating **	M	Issue No.	65 (cont)
LM End	4.32	Issue Type +	En	Location *	

Photo 2 of 3 : UCIP_FA_2017_44188_69543.jpg



3-inch PVC pipe and vent exposed on waterward toe, likely in alignment with this crossing.

* Location LS : Land Side N/A : Not Applicable WS : Water Side CR : Crown	** Rating A : Acceptable M : Minimally Acceptable U : Unacceptable	N : Not Inspected/Rated C : Corrected A/W : Acceptable but Monitor & Maintain	+ Issue Type Ma : Maintenance Deficiency Ob : Design & System Obsolescence En : Enforcement
--	--	---	---

**Flood Control Project Maintenance
Levee Inspections**

Levee Inspection Report By Mile - Fall 2017

Levee District No. 0002 (Glenn County)

Waterway	Bank	Unit Miles	Inspection Start/End	Inspector
Unit No. 01 Glenn County Sacramento River	Right	4.90	10/26/2017 10/26/2017	Bob Duffey

LM Start	4.32	Rating **	M	Issue No.	65 (cont)	
LM End	4.32	Issue Type +	En	Location *		
Category	Supplemental			GPS Latitude/Longitude		
				Start	End	
Item	DWR UCIP Field Study			39.469908 °	39.469908 °	
				-122.012117 °	-122.012117 °	
DWR ID						
Comment Code						
Inspector Comment						
FS_ID:44188						
DS_ID:21181						
EP_NO: 18072						
Repair Type: Non-Urgent						
Crossing Status: Indicator Found						
UCIP Comments: Pipe needs better markers at pipe crossing.						
FIELD_STRUCT_DESC: 6-inch steel irrigation pipe through the levee,						
2.0 feet below the levee. Well, pump, and vent visible on landside (LS)						
toe. Vent visible just off waterside (WS) toe. (Permit No. 18072-2006,						
McCowan & Southam)						
FS Date: 4/1/2015						

Photo 3 of 3 : UCIP_FA_2017_44188_73609.jpg



Well and pump visible on LS toe.

LM Start	4.62	Rating **	M	Issue No.	51
LM End	4.62	Issue Type +	En	Location *	WS
Category	Earthen Levee			GPS Latitude/Longitude	
				Start	End
Item	Encroachments			39.473522 °	39.473522 °
				-122.015418 °	-122.015418 °
DWR ID	DWR_LD0002_01_s_2017_51				
Comment Code					
TR : Tree or limb					
Inspector Comment					

No Photos

* Location LS : Land Side N/A : Not Applicable WS : Water Side CR : Crown	** Rating A : Acceptable M : Minimally Acceptable U : Unacceptable	N : Not Inspected/Rated C : Corrected A/W : Acceptable but Monitor & Maintain	+ Issue Type Ma : Maintenance Deficiency Ob : Design & System Obsolescence En : Enforcement
--	--	---	---

**Flood Control Project Maintenance
Levee Inspections**

Levee Inspection Report By Mile - Fall 2017

Levee District No. 0002 (Glenn County)

Waterway	Bank	Unit Miles	Inspection Start/End	Inspector
Unit No. 01 Glenn County Sacramento River	Right	4.90	10/26/2017 10/26/2017	Bob Duffey

LM Start	4.70	Rating **	M	Issue No.	52
LM End	4.70	Issue Type +	En	Location *	WS
Category	Earthen Levee			GPS Latitude/Longitude	
				Start	End
Item	Encroachments			39.474468 °	39.474468 °
				-122.016175 °	-122.016175 °
DWR ID	DWR_LD0002_01_s _ 2017_52				
Comment Code					
TR : Tree or limb					
Inspector Comment					

No Photos

LM Start	4.87	Rating **	A/W	Issue No.	11
LM End	4.87	Issue Type +	Ma	Location *	LS
Category	Earthen Levee			GPS Latitude/Longitude	
				Start	End
Item	Animal Control			39.476676 °	39.476676 °
				-122.017439 °	-122.017439 °
DWR ID	DWR_LD0002_01_s _ 2012_11				
Comment Code					
A3 : No rodents visible, but rodent burrows visible; need to backfill and compact or grout burrows.					
Inspector Comment					
The rodent holes have been filled with dirt.					

Photo 1 of 1 : FA_2017_LD0002_28_11_20170911_00005.jpg



View of the removed rodent holes and bait station.

* Location LS : Land Side N/A : Not Applicable WS : Water Side CR : Crown		** Rating A : Acceptable N : Not Inspected/Rated M : Minimally Acceptable C : Corrected U : Unacceptable A/W : Acceptable but Monitor & Maintain		+ Issue Type Ma : Maintenance Deficiency Ob : Design & System Obsolescence En : Enforcement
--	--	---	--	---

**Flood Control Project Maintenance
Levee Inspections**

Levee Inspection Report By Mile - Fall 2017

Levee District No. 0002 (Glenn County)

Waterway	Bank	Unit Miles	Inspection Start/End	Inspector
Unit No. 01 Glenn County Sacramento River	Right	4.90	10/26/2017 10/26/2017	Bob Duffey

LM Start	4.88	Rating **	U	Issue No.	66	
LM End	4.88	Issue Type +	En	Location *		
Category	Supplemental			GPS Latitude/Longitude		
				Start		End
Item	DWR UCIP Field Study			39.476781 °		39.476781 °
				-122.017494 °		-122.017494 °
DWR ID						
Comment Code						
Inspector Comment						
FS_ID:49909 DS_ID:21176 EP_NO: 15198 Repair Type: Urgent Crossing Status: Not Found UCIP Comments: 07/07/2016 same as previous inspection: No markers found. Unable to confirm crossing status. (DWR UCIP - omagana)05/16/2013 No markers found. Need to contact owner to determine if crossing is still active and to determine last inspection date. Will need copy of letter showing crossings passed inspection. (DWR UCIP - omagana) FIELD_STRUCT_DESC: 2-inch steel gas pipeline through the levee, 2.5 feet below the crown. (Permit No. 15198, 1989 - Northern Michigan Exploration Company) FS Date: 7/7/2016						

No Photos

* Location LS : Land Side N/A : Not Applicable WS : Water Side CR : Crown	** Rating A : Acceptable M : Minimally Acceptable U : Unacceptable N : Not Inspected/Rated C : Corrected A/W : Acceptable but Monitor & Maintain	+ Issue Type Ma : Maintenance Deficiency Ob : Design & System Obsolescence En : Enforcement
--	---	---