

**Flood Control Project Maintenance
Levee Inspections**

Fall 2015 Levee Maintenance Deficiency Summary Report

Overall LMA & Unit Ratings, including USACE Erosion Survey

Sacramento River Basin

LD0002	Overall LMA Rating	Total LMA Miles						
Levee District No. 0002 (Glenn County)	M	4.90						
Rated Item	Maintenance Deficiency				Enforcement		Design & System Obsolescence	
	M Miles	U Miles	M + 4U Miles	Threshold %	M Miles	U Miles	M Miles	U Miles
<i>Earthen Levee</i>								
Trim / Thin Trees	0.01		0.01	0.20%				
Encroachments	0.02		0.02	0.41%	0.01			
Animal Control	0.31	0.09	0.67	13.67%				
Erosion / Bank Caving	0.01		0.01	0.20%				
<i>Supplemental</i>								
2015 USACE Erosion Survey, DRAFT	0.21		0.21	4.29%				
DWR UCIP Field Study					0.13	0.01		
<i>LMA Totals:</i>	0.56	0.09	0.92	18.77%	0.14	0.01	0.00	0.00

**Flood Control Project Maintenance
Levee Inspections**
LMA District Cover Sheet
Fall 2015 Levee Inspection Results

Levee District No. 0002 (Glenn County)

	Spring (March - May)	Summer ** (June - August)	Fall (September - November)	Winter ** (December - February)
* Overall LMA Rating (Fall Only)			M	

** Non-receipt of Summer or Winter Inspection Reports may effect overall annual rating.

*
SPRING INSPECTIONS: Overall maintenance ratings are not determined for the spring inspection results. Individual maintenance deficiencies are rated using the same criteria in the spring and in the fall.

FALL INSPECTIONS: The overall maintenance rating shown above is based on operation and maintenance deficiencies identified within the attached unit inspection reports. This rating is not intended to be an indication of risk.

Comments

**Flood Control Project Maintenance
Levee Inspections**

Unit Cover Sheet

Fall 2015 Levee Inspection Results

Levee District No. 0002 (Glenn County)

Waterway			Bank	Unit Miles
Unit No. 01 Glenn County Sacramento River			Right	4.90
	Spring (March - May)	Summer (June - August)	(September - November) Fall	Winter (December - February)
Unit Maintenance Rating (Fall Only)			M	
Date of Inspection	04/07/2015 - 04/07/2015		09/14/2015 - 09/14/2015	
DWR Inspector	Bob Duffey		Bob Duffey	
Accompanied By	Dennis Clark		Dennis Clark	

Summer & Winter Inspections

The Local Maintaining Agency (LMA) is responsible for summer and winter inspections. The LMA is required to submit a report regarding summer and winter inspections to the California Department of Water Resources (DWR).

DWR must be informed on the:

- completion of the inspection
- any changes other than the results of normal maintenance
- corrections to deficiencies noted in this report

If additional items are noted, further documentation of those items must also be submitted.

The LMA should submit this information to DWR using the LMA web application tool available at:

<http://cdec.water.ca.gov/lma.html>

If the LMA is unable to submit information on this webpage, please contact DWR for assistance.

The LMA should submit the information and any associated documentation by September 30 for summer inspections and March 31 for winter inspections.

**Flood Control Project Maintenance
Levee Inspections**

Levee Inspection Report By Mile - Fall 2015

Levee District No. 0002 (Glenn County)

Waterway	Bank	Unit Miles	Inspection Start/End	Inspector
Unit No. 01 Glenn County Sacramento River	Right	4.90	09/14/2015 09/14/2015	Bob Duffey

LM Start		Rating **	A	Issue No.	14
LM End		Issue Type +	Ma	Location *	LS
Category	Earthen Levee			GPS Latitude/Longitude	
				Start	End
Item	Operations & Maintenance Manuals				°
					°
DWR ID	DWR_LD0002_01_s _ 2013_14				
Action/Comments					
Inspector Comments: The LMA has copies of the O&M manuals.					

No Photos

LM Start		Rating **	A	Issue No.	17		
LM End		Issue Type +	Ma	Location *	LS		
Category	Earthen Levee			GPS Latitude/Longitude			
				Start		End	
Item	Emergency Supplies & Equipment				°		°
					°		°
DWR ID	DWR_LD0002_01_s _ 2013_17						
Action/Comments							
Inspector Comments: The LMA has adequate flood fight supplies and equipment.							

No Photos

LM Start		Rating **	A	Issue No.	18		
LM End		Issue Type +	Ma	Location *	LS		
Category	Earthen Levee			GPS Latitude/Longitude			
				Start		End	
Item	Flood Preparedness & Training				o		o
					o		o
DWR ID	DWR_LD0002_01_s _ 2013_18						
Action/Comments							
Inspector Comments: The LMA has completed flood fight training in the past.							

No Photos

* Location LS : Land Side N/A : Not Applicable WS : Water Side CR : Crown	** Rating A : Acceptable M : Minimally Acceptable U : Unacceptable	N : Not Inspected/Rated C : Corrected A/W : Acceptable but Monitor & Maintain	+ Issue Type Ma : Maintenance Deficiency Ob : Design & System Obsolescence En : Enforcement
--	--	---	---

**Flood Control Project Maintenance
Levee Inspections**

Levee Inspection Report By Mile - Fall 2015

Levee District No. 0002 (Glenn County)

Waterway	Bank	Unit Miles	Inspection Start/End	Inspector
Unit No. 01 Glenn County Sacramento River	Right	4.90	09/14/2015 09/14/2015	Bob Duffey

LM Start	0.07	Rating **	M	Issue No.	6
LM End	0.28	Issue Type +	Ma	Location *	WS
Category	Supplemental			GPS Latitude/Longitude	
				Start	End
Item	2015 USACE Erosion Survey, DRAFT			39.414649 °	39.417689 °
				-122.009853 °	-122.010369 °
DWR ID					
Action/Comments					
Inspector Comments: 2009 - Very slow retreat, hard toe, encroaching into the levee projection. 2010 - Slowly eroding. 2011 - Site extended downstream. 2015: Last observed in 2013. [2015 Site ID: SAC_164-7_R]					

Photo 1 of 2 : USACE2013A_SAC_164-7_R_1.jpg



USACE 2013 Photo #1

LM Start	0.07	Rating **	M	Issue No.	6 (cont)
LM End	0.28	Issue Type +	Ma	Location *	WS

Photo 2 of 2 : USACE2013A_SAC_164-7_R_3.jpg



USACE 2013 Photo #2

LM Start	0.59	Rating **	M	Issue No.	43
LM End	0.59	Issue Type +	En	Location *	WS
Category	Supplemental			GPS Latitude/Longitude	
				Start	End
Item	DWR UCIP Field Study			39.422088 °	39.422088 °
				-122.011615 °	-122.011615 °
DWR ID					
Action/Comments					
Inspector Comments: FS_ID:42083 DS_ID:24877 EP_NO: N/A FS_HLM: 0.6 Repair Type: Non-Urgent Crossing Status: Indicator Found					

Photo 1 of 3 : UCIP_FA_2015_6687.jpg



Service box located on landward shoulder.

* Location	** Rating		+ Issue Type
LS : Land Side WS : Water Side CR : Crown	A : Acceptable M : Minimally Acceptable U : Unacceptable	N : Not Inspected/Rated C : Corrected A/W : Acceptable but Monitor & Maintain	Ma : Maintenance Deficiency Ob : Design & System Obsolescence En : Enforcement

**Flood Control Project Maintenance
Levee Inspections**

Levee Inspection Report By Mile - Fall 2015

Levee District No. 0002 (Glenn County)

Waterway	Bank	Unit Miles	Inspection Start/End	Inspector
Unit No. 01 Glenn County Sacramento River	Right	4.90	09/14/2015 09/14/2015	Bob Duffey

LM Start	0.59	Rating **	M	Issue No.	43 (cont)
LM End	0.59	Issue Type +	En	Location *	WS
Category	Supplemental			GPS Latitude/Longitude	
				Start	End
Item	DWR UCIP Field Study			39.422088 °	39.422088 °
				-122.011615 °	-122.011615 °
DWR ID					

Action/Comments					
Inspector Comments: FS_ID:42083 DS_ID:24877 EP_NO: N/A FS_HLM: 0.6 Repair Type: Non-Urgent Crossing Status: Indicator Found UCIP Comments: Need to contact owner to determine if conduit goes through levee crown. If it does, will need to obtain permit number issued for encroachment. FIELD_STRUCT_DESC: Caltrans traffic control box located on the landward side shoulder. Unable to determine if crossing goes through levee. FS Date: 05/16/2013					

LM Start	0.59	Rating **	M	Issue No.	43 (cont)
LM End	0.59	Issue Type +	En	Location *	WS

Photo 2 of 3 : UCIP_FA_2015_6688.jpg



View of levee crown at crossing.

Photo 3 of 3 : UCIP_FA_2015_6689.jpg



View of landward slope.

* Location	** Rating	+ Issue Type
LS : Land Side WS : Water Side CR : Crown	A : Acceptable M : Minimally Acceptable U : Unacceptable	N : Not Inspected/Rated C : Corrected A/W : Acceptable but Monitor & Maintain
N/A : Not Applicable		Ma : Maintenance Deficiency Ob : Design & System Obsolescence En : Enforcement

**Flood Control Project Maintenance
Levee Inspections**

Levee Inspection Report By Mile - Fall 2015

Levee District No. 0002 (Glenn County)

Waterway	Bank	Unit Miles	Inspection Start/End	Inspector
Unit No. 01 Glenn County Sacramento River	Right	4.90	09/14/2015 09/14/2015	Bob Duffey

LM Start	0.61	Rating **	M	Issue No.	44
LM End	0.61	Issue Type +	En	Location *	WS
Category	Supplemental			GPS Latitude/Longitude	
				Start	End
Item	DWR UCIP Field Study			39.422282 °	39.422282 °
				-122.011634 °	-122.011634 °
DWR ID					
Action/Comments					
Inspector Comments: FS_ID:38165					
DS_ID:21185					
EP_NO: 2356					
FS_HLM: 0.619					
Repair Type: Non-Urgent					
Crossing Status: Found					

Photo 1 of 3 : UCIP_FA_2015_6552.jpg



View of landward side--outlet.

LM Start	0.61	Rating **	M	Issue No.	44 (cont)
LM End	0.61	Issue Type +	En	Location *	WS

Photo 2 of 3 : UCIP_FA_2015_6658.jpg



View of levee crown at crossing.

* Location LS : Land Side N/A : Not Applicable WS : Water Side CR : Crown		** Rating A : Acceptable N : Not Inspected/Rated M : Minimally Acceptable C : Corrected U : Unacceptable A/W : Acceptable but Monitor & Maintain		+ Issue Type Ma : Maintenance Deficiency Ob : Design & System Obsolescence En : Enforcement
--	--	---	--	---

**Flood Control Project Maintenance
Levee Inspections**

Levee Inspection Report By Mile - Fall 2015

Levee District No. 0002 (Glenn County)

Waterway	Bank	Unit Miles	Inspection Start/End	Inspector
Unit No. 01 Glenn County Sacramento River	Right	4.90	09/14/2015 09/14/2015	Bob Duffey

LM Start	0.61	Rating **	M	Issue No.	44 (cont)
LM End	0.61	Issue Type +	En	Location *	WS
Category	Supplemental			GPS Latitude/Longitude	
				Start	End
Item	DWR UCIP Field Study			39.422282 °	39.422282 °
				-122.011634 °	-122.011634 °
DWR ID					
Action/Comments					
Inspector Comments: FS_ID:38165					
DS_ID:21185					
EP_NO: 2356					
FS_HLM: 0.619					
Repair Type: Non-Urgent					
Crossing Status: Found					

Photo 3 of 3 : UCIP_FA_2015_6659.jpg



View of Princeton-Cordora-Glenn Irrigation District--Schaad Pumping Plant.

LM Start	0.61	Rating **	M	Issue No.	45
LM End	0.61	Issue Type +	En	Location *	WS
Category	Supplemental			GPS Latitude/Longitude	
				Start	End
Item	DWR UCIP Field Study			39.422302 °	39.422302 °
				-122.011635 °	-122.011635 °
DWR ID					
Action/Comments					
Inspector Comments: FS_ID:38166 DS_ID:21184 EP_NO: N/A FS_HLM: 0.62 Repair Type: Non-Urgent Crossing Status: Found UCIP Comments: Three pipes found in the pump house on landward side. Pump house appears to be no longer in use. Unable to locate pipes on waterward side. Will need to contact owner to determine status. Owner will need to coordinate with CVFPB regarding proper removal per Title 23 requirements. FIELD_STRUCT_DESC: [Princeton-Cordora-Glenn Irrigation District: Schaad Pumping Plant] 2 of 3: 34-inch steel pipe sleeved through 36-inch steel pipe through the levee, 20.0 feet below the crown. Annular gap is grouted. Flap gate on landward end. Pump in pump house on landward slope. Rock revetment around outlet on waterward slope. (USACE-1955). This entry matches the Drainage or Irrigation Structure referenced in O&M manual (Station 41+47). Pipes sleeved through pre-existing pipes, pump and parallel 28-inch pipe installed. FS Date: 05/16/2013					

Photo 1 of 3 : UCIP_FA_2015_6660.jpg



View of levee crown at crossing.

* Location	** Rating	+ Issue Type
LS : Land Side WS : Water Side CR : Crown	A : Acceptable M : Minimally Acceptable U : Unacceptable	Ma : Maintenance Deficiency Ob : Design & System Obsolescence En : Enforcement
	N : Not Inspected/Rated C : Corrected A/W : Acceptable but Monitor & Maintain	

**Flood Control Project Maintenance
Levee Inspections**

Levee Inspection Report By Mile - Fall 2015

Levee District No. 0002 (Glenn County)

Waterway	Bank	Unit Miles	Inspection Start/End	Inspector
Unit No. 01 Glenn County Sacramento River	Right	4.90	09/14/2015 09/14/2015	Bob Duffey

LM Start	0.61	Rating **	M	Issue No.	45 (cont)
LM End	0.61	Issue Type +	En	Location *	WS
Category	Supplemental			GPS Latitude/Longitude	
				Start	End
Item	DWR UCIP Field Study			39.422302 °	39.422302 °
				-122.011635 °	-122.011635 °
DWR ID					

Action/Comments

Inspector Comments: FS_ID:38166
 DS_ID:21184
 EP_NO: N/A
 FS_HLM: 0.62
 Repair Type: Non-Urgent
 Crossing Status: Found
 UCIP Comments: Three pipes found in the pump house on landward side. Pump house appears to be no longer in use. Unable to locate pipes on waterward side. Will need to contact owner to determine status. Owner will need to coordinate with CVFPB regarding proper removal per Title 23 requirements.
 FIELD_STRUCT_DESC: [Princeton-Cordora-Glenn Irrigation District: Schaad Pumping Plant] 2 of 3: 34-inch steel pipe sleeved through 36-inch steel pipe through the levee, 20.0 feet below the crown. Annular gap is grouted. Flap gate on landward end. Pump in pump house on landward slope. Rock revetment around outlet on waterward slope. (USACE-1955). This entry matches the Drainage or Irrigation Structure referenced in O&M manual (Station 41+47). Pipes sleeved through pre-existing pipes, pump and parallel 28-inch pipe installed.
 FS Date: 05/16/2013

Photo 2 of 3 : UCIP_FA_2015_6661.jpg



View of Princeton-Cordora-Glenn Irrigation District--Schaad Pumping Plant.

* Location LS : Land Side N/A : Not Applicable WS : Water Side CR : Crown		** Rating A : Acceptable N : Not Inspected/Rated M : Minimally Acceptable C : Corrected U : Unacceptable A/W : Acceptable but Monitor & Maintain		+ Issue Type Ma : Maintenance Deficiency Ob : Design & System Obsolescence En : Enforcement
--	--	---	--	---

**Flood Control Project Maintenance
Levee Inspections**

Levee Inspection Report By Mile - Fall 2015

Levee District No. 0002 (Glenn County)

Waterway	Bank	Unit Miles	Inspection Start/End	Inspector
Unit No. 01 Glenn County Sacramento River	Right	4.90	09/14/2015 09/14/2015	Bob Duffey

LM Start	0.61	Rating **	M	Issue No.	45 (cont)
LM End	0.61	Issue Type +	En	Location *	WS
Category	Supplemental			GPS Latitude/Longitude	
				Start	End
Item	DWR UCIP Field Study			39.422302 °	39.422302 °
				-122.011635 °	-122.011635 °
DWR ID					

Action/Comments					
Inspector Comments: FS_ID:38166 DS_ID:21184 EP_NO: N/A FS_HLM: 0.62 Repair Type: Non-Urgent Crossing Status: Found UCIP Comments: Three pipes found in the pump house on landward side. Pump house appears to be no longer in use. Unable to locate pipes on waterward side. Will need to contact owner to determine status. Owner will need to coordinate with CVFPB regarding proper removal per Title 23 requirements. FIELD_STRUCT_DESC: [Princeton-Cordora-Glenn Irrigation District: Schaad Pumping Plant] 2 of 3: 34-inch steel pipe sleeved through 36-inch steel pipe through the levee, 20.0 feet below the crown. Annular gap is grouted. Flap gate on landward end. Pump in pump house on landward slope. Rock revetment around outlet on waterward slope. (USACE-1955). This entry matches the Drainage or Irrigation Structure referenced in O&M manual (Station 41+47). Pipes sleeved through pre-existing pipes, pump and parallel 28-inch pipe installed. FS Date: 05/16/2013					

Photo 3 of 3 : UCIP_FA_2015_6662.jpg



View of landward side--outlet.

* Location	** Rating	+ Issue Type
LS : Land Side WS : Water Side CR : Crown	A : Acceptable M : Minimally Acceptable U : Unacceptable	Ma : Maintenance Deficiency Ob : Design & System Obsolescence En : Enforcement
N/A : Not Applicable	N : Not Inspected/Rated C : Corrected A/W : Acceptable but Monitor & Maintain	

**Flood Control Project Maintenance
Levee Inspections**

Levee Inspection Report By Mile - Fall 2015

Levee District No. 0002 (Glenn County)

Waterway	Bank	Unit Miles	Inspection Start/End	Inspector
Unit No. 01 Glenn County Sacramento River	Right	4.90	09/14/2015 09/14/2015	Bob Duffey

LM Start	0.61	Rating **	M	Issue No.	46
LM End	0.61	Issue Type +	En	Location *	WS
Category	Supplemental			GPS Latitude/Longitude	
				Start	End
Item	DWR UCIP Field Study			39.422329 °	39.422329 °
				-122.011637 °	-122.011637 °
DWR ID					

Action/Comments

Inspector Comments: FS_ID:38167

DS_ID:21171

EP_NO: N/A

FS_HLM: 0.622

Repair Type: Non-Urgent

Crossing Status: Found

UCIP Comments: Three pipes found in the pump house on landward side. Pump house appears to be no longer in use. Unable to locate pipes on waterward side. Will need to contact owner to determine status. Owner will need to coordinate with CVFPB regarding proper removal per Title 23 requirements.

FIELD_STRUCT_DESC: [Princeton-Cordora-Glenn Irrigation District: Schaad Pumping Plant] 3 of 3: 34-inch steel pipe sleeved through 36-inch steel pipe through the levee, 20.0 feet below the crown. Annular gap is grouted. Flap gate on landward end. Pump in pump house on landward slope. Rock revetment around outlet on waterward slope. (USACE-1955). This entry matches the Drainage or Irrigation Structure referenced in O&M manual (Station 41+47). Pipes sleeved through pre-existing pipes, pump and parallel 28-inch pipe installed.

FS Date: 05/16/2013

Photo 1 of 3 : UCIP_FA_2015_6663.jpg



View of landward side--outlet.

* Location	** Rating	+ Issue Type
LS : Land Side WS : Water Side CR : Crown	A : Acceptable M : Minimally Acceptable U : Unacceptable	Ma : Maintenance Deficiency Ob : Design & System Obsolescence En : Enforcement
N/A : Not Applicable	N : Not Inspected/Rated C : Corrected A/W : Acceptable but Monitor & Maintain	

**Flood Control Project Maintenance
Levee Inspections**

Levee Inspection Report By Mile - Fall 2015

Levee District No. 0002 (Glenn County)

Waterway	Bank	Unit Miles	Inspection Start/End	Inspector
Unit No. 01 Glenn County Sacramento River	Right	4.90	09/14/2015 09/14/2015	Bob Duffey

LM Start	0.61	Rating **	M	Issue No.	46 (cont)
LM End	0.61	Issue Type +	En	Location *	WS
Category	Supplemental			GPS Latitude/Longitude	
				Start	End
Item	DWR UCIP Field Study			39.422329 °	39.422329 °
				-122.011637 °	-122.011637 °
DWR ID					

Action/Comments					
Inspector Comments: FS_ID:38167 DS_ID:21171 EP_NO: N/A FS_HLM: 0.622 Repair Type: Non-Urgent Crossing Status: Found UCIP Comments: Three pipes found in the pump house on landward side. Pump house appears to be no longer in use. Unable to locate pipes on waterward side. Will need to contact owner to determine status. Owner will need to coordinate with CVFPB regarding proper removal per Title 23 requirements. FIELD_STRUCT_DESC: [Princeton-Cordora-Glenn Irrigation District: Schaad Pumping Plant] 3 of 3: 34-inch steel pipe sleeved through 36-inch steel pipe through the levee, 20.0 feet below the crown. Annular gap is grouted. Flap gate on landward end. Pump in pump house on landward slope. Rock revetment around outlet on waterward slope. (USACE-1955). This entry matches the Drainage or Irrigation Structure referenced in O&M manual (Station 41+47). Pipes sleeved through pre-existing pipes, pump and parallel 28-inch pipe installed. FS Date: 05/16/2013					

Photo 2 of 3 : UCIP_FA_2015_6664.jpg



View of levee crown with marker on waterward side.

* Location	** Rating	+ Issue Type
LS : Land Side WS : Water Side CR : Crown	A : Acceptable M : Minimally Acceptable U : Unacceptable	Ma : Maintenance Deficiency Ob : Design & System Obsolescence En : Enforcement
N/A : Not Applicable	N : Not Inspected/Rated C : Corrected A/W : Acceptable but Monitor & Maintain	

**Flood Control Project Maintenance
Levee Inspections**

Levee Inspection Report By Mile - Fall 2015

Levee District No. 0002 (Glenn County)

Waterway	Bank	Unit Miles	Inspection Start/End	Inspector
Unit No. 01 Glenn County Sacramento River	Right	4.90	09/14/2015 09/14/2015	Bob Duffey

LM Start	0.61	Rating **	M	Issue No.	46 (cont)
LM End	0.61	Issue Type +	En	Location *	WS
Category	Supplemental			GPS Latitude/Longitude	
				Start	End
Item	DWR UCIP Field Study			39.422329 °	39.422329 °
				-122.011637 °	-122.011637 °
DWR ID					

Action/Comments

Inspector Comments: FS_ID:38167

DS_ID:21171

EP_NO: N/A

FS_HLM: 0.622

Repair Type: Non-Urgent

Crossing Status: Found

UCIP Comments: Three pipes found in the pump house on landward side. Pump house appears to be no longer in use. Unable to locate pipes on waterward side. Will need to contact owner to determine status. Owner will need to coordinate with CVFPB regarding proper removal per Title 23 requirements.

FIELD_STRUCT_DESC: [Princeton-Cordora-Glenn Irrigation District: Schaad Pumping Plant] 3 of 3: 34-inch steel pipe sleeved through 36-inch steel pipe through the levee, 20.0 feet below the crown. Annular gap is grouted. Flap gate on landward end. Pump in pump house on landward slope. Rock revetment around outlet on waterward slope. (USACE-1955). This entry matches the Drainage or Irrigation Structure referenced in O&M manual (Station 41+47). Pipes sleeved through pre-existing pipes, pump and parallel 28-inch pipe installed.

FS Date: 05/16/2013

Photo 3 of 3 : UCIP_FA_2015_6665.jpg



View of Princeton-Cordora-Glenn Irrigation District-Schaad Pumping Plant.

* Location LS : Land Side N/A : Not Applicable WS : Water Side CR : Crown		** Rating A : Acceptable N : Not Inspected/Rated M : Minimally Acceptable C : Corrected U : Unacceptable A/W : Acceptable but Monitor & Maintain		+ Issue Type Ma : Maintenance Deficiency Ob : Design & System Obsolescence En : Enforcement
--	--	---	--	---

**Flood Control Project Maintenance
Levee Inspections**

Levee Inspection Report By Mile - Fall 2015

Levee District No. 0002 (Glenn County)

Waterway	Bank	Unit Miles	Inspection Start/End	Inspector
Unit No. 01 Glenn County Sacramento River	Right	4.90	09/14/2015 09/14/2015	Bob Duffey

LM Start	0.61	Rating **	M	Issue No.	47
LM End	0.61	Issue Type +	En	Location *	WS
Category	Supplemental			GPS Latitude/Longitude	
				Start	End
Item	DWR UCIP Field Study			39.422350 °	39.422350 °
				-122.011637 °	-122.011637 °
DWR ID					

Action/Comments

Inspector Comments: FS_ID:38168
DS_ID:21182
EP_NO: N/A
FS_HLM: 0.623
Repair Type: Non-Urgent
Crossing Status: Indicator Found
UCIP Comments: Unable to verify if the pipes inside the existing pump house correlate to 24-inch installed in 1955. Three pipes found in the pump house on landward side. Pump house appears to be no longer in use. Unable to locate pipes on waterward side. Will need to contact owner to determine status.
FIELD_STRUCT_DESC: [Pumping Plant] 24-inch steel pipe through the levee, 27.3 feet below the crown. Flap gate on landward side. Pump in pump house on landward side. (USACE-1955). This entry matches the Drainage or Irrigation Structure referenced in O&M manual (Station 41+47).
FS Date: 05/16/2013

LM Start	0.61	Rating **	M	Issue No.	47 (cont)
LM End	0.61	Issue Type +	En	Location *	WS

Photo 1 of 3 : UCIP_FA_2015_6666.jpg



View of landward side--outlet.

Photo 2 of 3 : UCIP_FA_2015_6706.jpg



View of levee crown with marker on waterward side.

* Location	** Rating	+ Issue Type
LS : Land Side WS : Water Side CR : Crown	A : Acceptable M : Minimally Acceptable U : Unacceptable	Ma : Maintenance Deficiency Ob : Design & System Obsolescence En : Enforcement
N/A : Not Applicable	N : Not Inspected/Rated C : Corrected A/W : Acceptable but Monitor & Maintain	

**Flood Control Project Maintenance
Levee Inspections**

Levee Inspection Report By Mile - Fall 2015

Levee District No. 0002 (Glenn County)

Waterway	Bank	Unit Miles	Inspection Start/End	Inspector
Unit No. 01 Glenn County Sacramento River	Right	4.90	09/14/2015 09/14/2015	Bob Duffey

LM Start	0.61	Rating **	M	Issue No.	47 (cont)
LM End	0.61	Issue Type +	En	Location *	WS
Category	Supplemental			GPS Latitude/Longitude	
				Start	End
Item	DWR UCIP Field Study			39.422350 °	39.422350 °
				-122.011637 °	-122.011637 °
DWR ID					
Action/Comments					
Inspector Comments: FS_ID:38168					
DS_ID:21182					
EP_NO: N/A					
FS_HLM: 0.623					
Repair Type: Non-Urgent					
Crossing Status: Indicator Found					

Photo 3 of 3 : UCIP_FA_2015_6707.jpg



View of Princeton-Cordora-Glenn Irrigation District-Schaad Pumping Plant.

LM Start	1.02	Rating **	M	Issue No.	8
LM End	1.02	Issue Type +	En	Location *	WS
Category	Earthen Levee			GPS Latitude/Longitude	
				Start	End
Item	Encroachments			39.428322 °	39.428322 °
				-122.010973 °	-122.010973 °
DWR ID	DWR_LD0002_01_s_2012_8				
Action/Comments					
Building					

Photo 1 of 2 : FA_2015_LD0002_28_8_20150910_00006.jpg



View of a house along the waterside toe.

LM Start	1.02	Rating **	M	Issue No.	8 (cont)
LM End	1.02	Issue Type +	En	Location *	WS

Photo 2 of 2 : FA_2015_LD0002_28_8_20151013_00018.jpg



View of the house along the waterside toe.

* Location LS : Land Side N/A : Not Applicable WS : Water Side CR : Crown		** Rating A : Acceptable M : Minimally Acceptable U : Unacceptable		N : Not Inspected/Rated C : Corrected A/W : Acceptable but Monitor & Maintain		+ Issue Type Ma : Maintenance Deficiency Ob : Design & System Obsolescence En : Enforcement	
--	--	--	--	---	--	---	--

**Flood Control Project Maintenance
Levee Inspections**

Levee Inspection Report By Mile - Fall 2015

Levee District No. 0002 (Glenn County)

Waterway	Bank	Unit Miles	Inspection Start/End	Inspector
Unit No. 01 Glenn County Sacramento River	Right	4.90	09/14/2015 09/14/2015	Bob Duffey

LM Start	1.03	Rating **	M	Issue No.	48
LM End	1.03	Issue Type +	En	Location *	WS
Category	Supplemental			GPS Latitude/Longitude	
				Start	End
Item	DWR UCIP Field Study			39.428441 °	39.428441 °
				-122.011032 °	-122.011032 °
DWR ID					
Action/Comments					
Inspector Comments: FS_ID:44170					
DS_ID:21177					
EP_NO: 9723					
FS_HLM: 1.05					
Repair Type: Non-Urgent					
Crossing Status: Indicator Found					

LM Start	1.03	Rating **	M	Issue No.	48 (cont)
LM End	1.03	Issue Type +	En	Location *	WS

Photo 1 of 3 : UCIP_FA_2015_5990.jpg



Sign lists Pacific Telephone system.

Photo 2 of 3 : UCIP_FA_2015_5991.jpg



AT&T underground cable line.

* Location LS : Land Side N/A : Not Applicable WS : Water Side CR : Crown		** Rating A : Acceptable M : Minimally Acceptable U : Unacceptable N : Not Inspected/Rated C : Corrected A/W : Acceptable but Monitor & Maintain		+ Issue Type Ma : Maintenance Deficiency Ob : Design & System Obsolescence En : Enforcement	
---	--	--	--	--	--

**Flood Control Project Maintenance
Levee Inspections**

Levee Inspection Report By Mile - Fall 2015

Levee District No. 0002 (Glenn County)

Waterway	Bank	Unit Miles	Inspection Start/End	Inspector
Unit No. 01 Glenn County Sacramento River	Right	4.90	09/14/2015 09/14/2015	Bob Duffey

LM Start	1.03	Rating **	M	Issue No.	48 (cont)
LM End	1.03	Issue Type +	En	Location *	WS
Category	Supplemental			GPS Latitude/Longitude	
				Start	End
Item	DWR UCIP Field Study			39.428441 °	39.428441 °
				-122.011032 °	-122.011032 °
DWR ID					
Action/Comments					
Inspector Comments: FS_ID:44170					
DS_ID:21177					
EP_NO: 9723					
FS_HLM: 1.05					
Repair Type: Non-Urgent					
Crossing Status: Indicator Found					

Photo 3 of 3 : UCIP_FA_2015_5992.jpg



Indicators of existing line visible on slope.

LM Start	1.03	Rating **	M	Issue No.	30
LM End	1.03	Issue Type +	Ma	Location *	WS
Category	Earthen Levee			GPS Latitude/Longitude	
				Start	End
Item	Trim / Thin Trees			39.428445 °	39.428445 °
				-122.010972 °	-122.010972 °
DWR ID	DWR_LD0002_01_f_2015_30				
Action/Comments					
Thin trees to allow visibility of the ground and room to flood fight. Inspector Comments: Remove the oleanders from the waterside slope.					

Photo 1 of 1 : FA_2015_LD0002_28_30_20151013_00019.jpg



View of the oleanders along the waterside slope.

LM Start	1.24	Rating **	M	Issue No.	40
LM End	1.24	Issue Type +	Ma	Location *	WS
Category	Earthen Levee			GPS Latitude/Longitude	
				Start	End
Item	Encroachments			39.431499 °	39.431499 °
				-122.010803 °	-122.010803 °
DWR ID	DWR_LD0002_01_f_2013_40				
Action/Comments					
Tree or limb					
Inspector Comments: Remove the tree limbs from the waterside slope.					

Photo 1 of 2 : FA_2015_LD0002_28_40_20150910_00015.jpg



View of the downed tree limb along the slope of the levee.

* Location LS : Land Side N/A : Not Applicable WS : Water Side CR : Crown		** Rating A : Acceptable M : Minimally Acceptable U : Unacceptable N : Not Inspected/Rated C : Corrected A/W : Acceptable but Monitor & Maintain		+ Issue Type Ma : Maintenance Deficiency Ob : Design & System Obsolescence En : Enforcement	
--	--	---	--	---	--

**Flood Control Project Maintenance
Levee Inspections**

Levee Inspection Report By Mile - Fall 2015

Levee District No. 0002 (Glenn County)

Waterway	Bank	Unit Miles	Inspection Start/End	Inspector
Unit No. 01 Glenn County Sacramento River	Right	4.90	09/14/2015 09/14/2015	Bob Duffey

LM Start	1.24	Rating **	M	Issue No.	40 (cont)
LM End	1.24	Issue Type +	Ma	Location *	WS
Category	Earthen Levee			GPS Latitude/Longitude	
				Start	End
Item	Encroachments			39.431499 °	39.431499 °
				-122.010803 °	-122.010803 °
DWR ID	DWR_LD0002_01_f_2013_40				
Action/Comments					
Tree or limb					
Inspector Comments: Remove the tree limbs from the waterside slope.					

Photo 2 of 2 : FA_2015_LD0002_28_40_20151013_00020.jpg



View of the tree limbs along the waterside slope.

LM Start	1.43	Rating **	M	Issue No.	4
LM End	1.43	Issue Type +	Ma	Location *	LS
Category	Earthen Levee			GPS Latitude/Longitude	
				Start	End
Item	Animal Control			39.434157 °	39.434157 °
				-122.010760 °	-122.010760 °
DWR ID	DWR_LD0002_01_f_2012_4				
Action/Comments					
No rodents visible, but rodent burrows visible; need to backfill and compact or grout burrows.					

Photo 1 of 1 : FA_2015_LD0002_28_4_20150910_00002.jpg



View of the rodent holes along the landside slope.

LM Start	1.52	Rating **	M	Issue No.	15
LM End	1.60	Issue Type +	Ma	Location *	LS
Category	Earthen Levee			GPS Latitude/Longitude	
				Start	End
Item	Animal Control			39.435485 °	39.436643 °
				-122.010640 °	-122.010498 °
DWR ID	DWR_LD0002_01_f_2012_15				
Action/Comments					
No rodents visible, but rodent burrows visible; need to backfill and compact or grout burrows.					
Inspector Comments: LMA needs to repair the rodent holes.					

Photo 1 of 2 : FA_2015_LD0002_28_15_20150910_00011.jpg



View of the rodent holes along the landside slope.

* Location LS : Land Side N/A : Not Applicable WS : Water Side CR : Crown		** Rating A : Acceptable M : Minimally Acceptable U : Unacceptable		N : Not Inspected/Rated C : Corrected A/W : Acceptable but Monitor & Maintain		+ Issue Type Ma : Maintenance Deficiency Ob : Design & System Obsolescence En : Enforcement	
---	--	---	--	---	--	--	--

**Flood Control Project Maintenance
Levee Inspections**

Levee Inspection Report By Mile - Fall 2015

Levee District No. 0002 (Glenn County)

Waterway	Bank	Unit Miles	Inspection Start/End	Inspector
Unit No. 01 Glenn County Sacramento River	Right	4.90	09/14/2015 09/14/2015	Bob Duffey

LM Start	1.52	Rating **	M	Issue No.	15 (cont)
LM End	1.60	Issue Type +	Ma	Location *	LS
Category	Earthen Levee			GPS Latitude/Longitude	
				Start	End
Item	Animal Control			39.435485 °	39.436643 °
				-122.010640 °	-122.010498 °
DWR ID	DWR_LD0002_01_f_2012_15				
Action/Comments					
No rodents visible, but rodent burrows visible; need to backfill and compact or grout burrows. Inspector Comments: LMA needs to repair the rodent holes.					

Photo 2 of 2 : FA_2015_LD0002_28_15_20151013_00021.jpg



View of the rodent holes along the landside slope.

LM Start	1.57	Rating **	M	Issue No.	41
LM End	1.57	Issue Type +	Ma	Location *	LS
Category	Earthen Levee			GPS Latitude/Longitude	
				Start	End
Item	Animal Control			39.436149 °	39.436149
				-122.010525 °	-122.010525
DWR ID	DWR_LD0002_01_f_2013_41				
Action/Comments					
No rodents visible, but rodent burrows visible; need to backfill and compact or grout burrows.					

Photo 1 of 1 : FA_2015_LD0002_28_41_20150910_00016.jpg



View of the rodent holes along the slope of the levee.

* Location LS : Land Side N/A : Not Applicable WS : Water Side CR : Crown		** Rating A : Acceptable N : Not Inspected/Rated M : Minimally Acceptable C : Corrected U : Unacceptable A/W : Acceptable but Monitor & Maintain		+ Issue Type Ma : Maintenance Deficiency Ob : Design & System Obsolescence En : Enforcement
--	--	---	--	---

**Flood Control Project Maintenance
Levee Inspections**

Levee Inspection Report By Mile - Fall 2015

Levee District No. 0002 (Glenn County)

Waterway	Bank	Unit Miles	Inspection Start/End	Inspector
Unit No. 01 Glenn County Sacramento River	Right	4.90	09/14/2015 09/14/2015	Bob Duffey

LM Start	2.39	Rating **	M	Issue No.	49
LM End	2.39	Issue Type +	En	Location *	LS
Category	Supplemental			GPS Latitude/Longitude	
				Start	End
Item	DWR UCIP Field Study			39.446534 °	39.446534
				-122.016052 °	-122.016052
DWR ID					

No Photos

Action/Comments					
Inspector Comments: FS_ID:42085 DS_ID:21190 EP_NO: N/A FS_HLM: 2.42 Repair Type: Non-Urgent Crossing Status: Not Found UCIP Comments: Dense vegetation limits the inspector's visibility to identify signs of pipe failure (leaks) along the waterward slope. Recommend coming back in the Fall to search for crossing. FIELD_STRUCT_DESC: Pump and tank in concrete box on the waterward side. Power poles on the waterward slope. Channel on waterward side runs parallel to the levee. FS Date: 05/16/2013					

LM Start	2.77	Rating **	M	Issue No.	42
LM End	2.77	Issue Type +	Ma	Location *	WS
Category	Earthen Levee			GPS Latitude/Longitude	
				Start	End
Item	Animal Control			39.451841 °	39.451841 °
				-122.017120 °	-122.017120 °
DWR ID	DWR_LD0002_01_f_ 2013_42				
Action/Comments					
No rodents visible, but rodent burrows visible; need to backfill and compact or grout burrows.					

Photo 1 of 1 : FA_2015_LD0002_28_42_20150910_00017.jpg



View of the rodent holes along the slope of the levee.

* Location	** Rating	+ Issue Type
LS : Land Side WS : Water Side CR : Crown	A : Acceptable M : Minimally Acceptable U : Unacceptable	Ma : Maintenance Deficiency Ob : Design & System Obsolescence En : Enforcement
N/A : Not Applicable	N : Not Inspected/Rated C : Corrected A/W : Acceptable but Monitor & Maintain	

**Flood Control Project Maintenance
Levee Inspections**

Levee Inspection Report By Mile - Fall 2015

Levee District No. 0002 (Glenn County)

Waterway	Bank	Unit Miles	Inspection Start/End	Inspector
Unit No. 01 Glenn County Sacramento River	Right	4.90	09/14/2015 09/14/2015	Bob Duffey

LM Start	2.79	Rating **	M	Issue No.	50
LM End	2.79	Issue Type +	En	Location *	WS
Category	Supplemental			GPS Latitude/Longitude	
				Start	End
Item	DWR UCIP Field Study			39.452180 °	39.452180 °
				-122.017100 °	-122.017100 °
DWR ID					
Action/Comments					
Inspector Comments: FS_ID:42086 DS_ID:21183 EP_NO: N/A FS_HLM: 2.83 Repair Type: Non-Urgent Crossing Status: Not Found UCIP Comments: Unable to find any signs of crossing. LMA noted that crossing might have been grouted during the adjacent wildlife project. Dense vegetation limits the inspector's visibility to identify signs of pipe failure (leaks) along the waterward slope. Recommend coming back in the Fall to search for crossing. FIELD_STRUCT_DESC: 10-inch steel pipe through the levee, approximately 17 feet below the crown. (USACE-1955). This entry matches the Drainage or Irrigation Structure referenced in O&M manual (Station 111+17). FS Date: 05/16/2013					

No Photos

LM Start	2.89	Rating **	M	Issue No.	5
LM End	2.89	Issue Type +	Ma	Location *	LS
Category	Earthen Levee			GPS Latitude/Longitude	
				Start	End
Item	Encroachments			39.453490 °	39.453490 °
				-122.016457 °	-122.016457 °
DWR ID	DWR_LD0002_01_f_2015_5				
Action/Comments					
Prunings					

Photo 1 of 1 : FA_2015_LD0002_28_5_20150910_00003.jpg



View of the prunings along the landside toe.

* Location LS : Land Side N/A : Not Applicable WS : Water Side CR : Crown	** Rating A : Acceptable M : Minimally Acceptable U : Unacceptable	N : Not Inspected/Rated C : Corrected A/W : Acceptable but Monitor & Maintain	+ Issue Type Ma : Maintenance Deficiency Ob : Design & System Obsolescence En : Enforcement
--	--	---	---

**Flood Control Project Maintenance
Levee Inspections**

Levee Inspection Report By Mile - Fall 2015

Levee District No. 0002 (Glenn County)

Waterway	Bank	Unit Miles	Inspection Start/End	Inspector
Unit No. 01 Glenn County Sacramento River	Right	4.90	09/14/2015 09/14/2015	Bob Duffey

LM Start	2.91	Rating **	C	Issue No.	29
LM End	2.91	Issue Type +	En	Location *	LS
Category	Earthen Levee			GPS Latitude/Longitude	
				Start	End
Item	Encroachments			39.453737 °	39.453737 °
				-122.016413 °	-122.016413 °
DWR ID	DWR_LD0002_01_s _ 2015_29				
Action/Comments					
Prunings					
Inspector Comments: The LMA burned the prunings.					

No Photos

LM Start	2.91	Rating **	M	Issue No.	2
LM End	2.96	Issue Type +	Ma	Location *	LS
Category	Earthen Levee			GPS Latitude/Longitude	
				Start	End
Item	Animal Control			39.453595 °	39.454003 °
				-122.016273 °	-122.015503 °
DWR ID	DWR_LD0002_01_f _ 2015_2				
Action/Comments					
No rodents visible, but rodent burrows visible; need to backfill and compact or grout burrows.					

Photo 1 of 1 : FA_2015_LD0002_28_2_20150910_00001.jpg



View of the rodent holes and bait station along the landside slope.

LM Start	3.06	Rating **	M	Issue No.	3
LM End	3.13	Issue Type +	Ma	Location *	WS
Category	Earthen Levee			GPS Latitude/Longitude	
				Start	End
Item	Animal Control			39.455145 °	39.455813 °
				-122.014287 °	-122.013205 °
DWR ID	DWR_LD0002_01_s _ 2012_3				
Action/Comments					
No rodents visible, but rodent burrows visible; need to backfill and compact or grout burrows.					
Inspector Comments: Repair the rodent holes along the waterside slope.					

Photo 1 of 1 : FA_2015_LD0002_28_3_20151013_00024.jpg



View of the rodent holes along the waterside slope.

* Location		** Rating		+ Issue Type	
LS : Land Side	N/A : Not Applicable	A : Acceptable	N : Not Inspected/Rated	Ma : Maintenance Deficiency	
WS : Water Side		M : Minimally Acceptable	C : Corrected	Ob : Design & System Obsolescence	
CR : Crown		U : Unacceptable	A/W : Acceptable but Monitor & Maintain	En : Enforcement	

**Flood Control Project Maintenance
Levee Inspections**

Levee Inspection Report By Mile - Fall 2015

Levee District No. 0002 (Glenn County)

Waterway	Bank	Unit Miles	Inspection Start/End	Inspector
Unit No. 01 Glenn County Sacramento River	Right	4.90	09/14/2015 09/14/2015	Bob Duffey

LM Start	3.16	Rating **	U	Issue No.	12
LM End	3.16	Issue Type +	Ma	Location *	LS
Category	Earthen Levee	GPS Latitude/Longitude			
		Start		End	
Item	Animal Control	39.455992 °		39.455992 °	
		-122.012809 °		-122.012809 °	
DWR ID	DWR_LD0002_01_s _ 2013_12				
Action/Comments					
Exterminate rodents and backfill and compact or grout burrows. Inspector Comments: Repair the rodent holes along landside slope.					

Photo 1 of 1 : FA_2015_LD0002_28_12_20150910_00009.jpg



View of the rodent activity along the landside slope.

LM Start	3.16	Rating **	M	Issue No.	9
LM End	3.16	Issue Type +	Ma	Location *	LS
Category	Earthen Levee			GPS Latitude/Longitude	
				Start	End
Item	Animal Control			39.455992 °	39.455992
				-122.012808 °	-122.012808
DWR ID	DWR_LD0002_01_s _ 2013_9				
Action/Comments					
No rodents visible, but rodent burrows visible; need to backfill and compact or grout burrows.					

Photo 1 of 1 : FA_2015_LD0002_28_9_20150910_00007.jpg



View of the rodent activity along the waterside slope.

LM Start	3.27	Rating **	M	Issue No.	16
LM End	3.30	Issue Type +	Ma	Location *	LS
Category	Earthen Levee			GPS Latitude/Longitude	
				Start	End
Item	Animal Control			39.456237 °	39.456272 °
				-122.010640 °	-122.010163 °
DWR ID	DWR_LD0002_01_f _ 2012_16				
Action/Comments					
No rodents visible, but rodent burrows visible; need to backfill and compact or grout burrows.					
Inspector Comments: Grout or fill the rodent holes.					

Photo 1 of 1 : FA_2015_LD0002_28_16_20150910_00012.jpg



View of the rodent holes along the landside slope.

* Location LS : Land Side N/A : Not Applicable WS : Water Side CR : Crown		** Rating A : Acceptable M : Minimally Acceptable U : Unacceptable N : Not Inspected/Rated C : Corrected A/W : Acceptable but Monitor & Maintain		+ Issue Type Ma : Maintenance Deficiency Ob : Design & System Obsolescence En : Enforcement	
--	--	---	--	---	--

**Flood Control Project Maintenance
Levee Inspections**

Levee Inspection Report By Mile - Fall 2015

Levee District No. 0002 (Glenn County)

Waterway	Bank	Unit Miles	Inspection Start/End	Inspector
Unit No. 01 Glenn County Sacramento River	Right	4.90	09/14/2015 09/14/2015	Bob Duffey

LM Start	3.37	Rating **	M	Issue No.	51
LM End	3.37	Issue Type +	En	Location *	LS
Category	Supplemental			GPS Latitude/Longitude	
				Start	End
Item	DWR UCIP Field Study			39.456704 °	39.456704 °
				-122.009621 °	-122.009621 °
DWR ID					

Action/Comments					
Inspector Comments: FS_ID:44186 DS_ID:21188 EP_NO: 12444 FS_HLM: 3.41 Repair Type: Non-Urgent Crossing Status: Indicator Found UCIP Comments: Needs markers 10-feet off both levee toes. FIELD_STRUCT_DESC: Steel conduit through the levee, 2.5 feet below the crown. Conduit extends to pole on waterward side. Cut in pavement visible at levee crown (Permit No. 12444-1978) FS Date: 04/01/2015					

LM Start	3.37	Rating **	M	Issue No.	51 (cont)
LM End	3.37	Issue Type +	En	Location *	LS

Photo 1 of 2 : UCIP_FA_2015_5840.jpg



Cut in pavement at levee crown good indicator of crossing.

Photo 2 of 2 : UCIP_FA_2015_5841.jpg



Conduit may be visible on pole about 1000-feet west of levee crown.

* Location	** Rating	+ Issue Type
LS : Land Side WS : Water Side CR : Crown	A : Acceptable M : Minimally Acceptable U : Unacceptable	Ma : Maintenance Deficiency Ob : Design & System Obsolescence En : Enforcement
N/A : Not Applicable	N : Not Inspected/Rated C : Corrected A/W : Acceptable but Monitor & Maintain	

**Flood Control Project Maintenance
Levee Inspections**

Levee Inspection Report By Mile - Fall 2015

Levee District No. 0002 (Glenn County)

Waterway	Bank	Unit Miles	Inspection Start/End	Inspector
Unit No. 01 Glenn County Sacramento River	Right	4.90	09/14/2015 09/14/2015	Bob Duffey

LM Start	3.37	Rating **	M	Issue No.	52
LM End	3.37	Issue Type +	En	Location *	LS
Category	Supplemental			GPS Latitude/Longitude	
				Start	End
Item	DWR UCIP Field Study			39.456720 °	39.456720 °
				-122.009630 °	-122.009630 °
DWR ID					
Action/Comments					
Inspector Comments: FS_ID:44185 DS_ID:21175 EP_NO: 5376 FS_HLM: 3.412 Repair Type: Non-Urgent Crossing Status: Indicator Found					

LM Start	3.37	Rating **	M	Issue No.	52 (cont)
LM End	3.37	Issue Type +	En	Location *	LS

Photo 1 of 2 : UCIP_FA_2015_5842.jpg



Cut in pavement visible at crown good indicator of crossing location.

Photo 2 of 2 : UCIP_FA_2015_5843.jpg



Conduit may be visible at pole about 1000-feet west of crown.

* Location LS : Land Side N/A : Not Applicable WS : Water Side CR : Crown		** Rating A : Acceptable N : Not Inspected/Rated M : Minimally Acceptable C : Corrected U : Unacceptable A/W : Acceptable but Monitor & Maintain		+ Issue Type Ma : Maintenance Deficiency Ob : Design & System Obsolescence En : Enforcement
--	--	---	--	---

**Flood Control Project Maintenance
Levee Inspections**

Levee Inspection Report By Mile - Fall 2015

Levee District No. 0002 (Glenn County)

Waterway	Bank	Unit Miles	Inspection Start/End	Inspector
Unit No. 01 Glenn County Sacramento River	Right	4.90	09/14/2015 09/14/2015	Bob Duffey

LM Start	3.44	Rating **	U	Issue No.	27
LM End	3.52	Issue Type +	Ma	Location *	LS
Category	Earthen Levee			GPS Latitude/Longitude	
				Start	End
Item	Animal Control			39.457692 °	39.458705 °
				-122.009517 °	-122.009872 °
DWR ID	DWR_LD0002_01_s_2014_27				
Action/Comments					
No rodents visible, but rodent burrows visible; need to backfill and compact or grout burrows.					
Inspector Comments: Repair the rodent holes on landside slope.					

Photo 1 of 1 : FA_2015_LD0002_28_27_20150910_00013.jpg



View of the rodent activity along the l/s slope.

LM Start	3.53	Rating **	M	Issue No.	13
LM End	3.57	Issue Type +	Ma	Location *	LS
Category	Earthen Levee			GPS Latitude/Longitude	
				Start	End
Item	Animal Control			39.458803 °	39.459305 °
				-122.009980 °	-122.010511 °
DWR ID	DWR_LD0002_01_s_2013_13				
Action/Comments					
Exterminate rodents and backfill and compact or grout burrows.					

Photo 1 of 1 : FA_2015_LD0002_28_13_20150910_00010.jpg



View of the rodent activity along the landside slope.

* Location LS : Land Side N/A : Not Applicable WS : Water Side CR : Crown		** Rating A : Acceptable N : Not Inspected/Rated M : Minimally Acceptable C : Corrected U : Unacceptable A/W : Acceptable but Monitor & Maintain		+ Issue Type Ma : Maintenance Deficiency Ob : Design & System Obsolescence En : Enforcement
--	--	---	--	---

**Flood Control Project Maintenance
Levee Inspections**

Levee Inspection Report By Mile - Fall 2015

Levee District No. 0002 (Glenn County)

Waterway	Bank	Unit Miles	Inspection Start/End	Inspector
Unit No. 01 Glenn County Sacramento River	Right	4.90	09/14/2015 09/14/2015	Bob Duffey

LM Start	3.73	Rating **	M	Issue No.	53
LM End	3.73	Issue Type +	En	Location *	LS
Category	Supplemental			GPS Latitude/Longitude	
				Start	End
Item	DWR UCIP Field Study			39.461509 °	39.461509 °
				-122.011493 °	-122.011493 °
DWR ID					

Action/Comments

Inspector Comments: FS_ID:38178
 DS_ID:21178
 EP_NO: 16931
 FS_HLM: 3.7
 Repair Type: Non-Urgent
 Crossing Status: Indicator Found
 UCIP Comments: Inspector notes indicate that pipe was never installed through levee and application was closed. Steel pipe was not installed but detachable section was installed. The pipe section goes up and over levee. Permit 16931 file was closed in 2005 owner was unable to install pipe due to costs. Permit indicates that pipe was to be used for winter supply of irrigation water to landward side. Need to coordinate with DWR inspector--permit revised for this type of structure.
 FIELD_STRUCT_DESC: Crossing visible at location. Current structure differs from original request in Permit No. 16931. PVC connection visible on landward toe with cutoff valve. Pipe connects to 8-inch PVC pipe extending past landward toe.
 FS Date: 05/16/2013

LM Start	3.73	Rating **	M	Issue No.	53 (cont)
LM End	3.73	Issue Type +	En	Location *	LS

Photo 1 of 3 : UCIP_FA_2015_6708.jpg



Pipe connection capped with control valve located on landward toe.

Photo 2 of 3 : UCIP_FA_2015_6709.jpg



Pump system located near landward toe.

* Location	** Rating	+ Issue Type
LS : Land Side WS : Water Side CR : Crown	A : Acceptable M : Minimally Acceptable U : Unacceptable	Ma : Maintenance Deficiency Ob : Design & System Obsolescence En : Enforcement
N/A : Not Applicable	N : Not Inspected/Rated C : Corrected A/W : Acceptable but Monitor & Maintain	

**Flood Control Project Maintenance
Levee Inspections**

Levee Inspection Report By Mile - Fall 2015

Levee District No. 0002 (Glenn County)

Waterway	Bank	Unit Miles	Inspection Start/End	Inspector
Unit No. 01 Glenn County Sacramento River	Right	4.90	09/14/2015 09/14/2015	Bob Duffey

LM Start	3.73	Rating **	M	Issue No.	53 (cont)
LM End	3.73	Issue Type +	En	Location *	LS
Category	Supplemental			GPS Latitude/Longitude	
				Start	End
Item	DWR UCIP Field Study			39.461509 °	39.461509 °
				-122.011493 °	-122.011493 °
DWR ID					
Action/Comments					
Inspector Comments: FS_ID:38178 DS_ID:21178 EP_NO: 16931 FS_HLM: 3.7 Repair Type: Non-Urgent Crossing Status: Indicator Found					

Photo 3 of 3 : UCIP_FA_2015_6710.jpg



View of pump system on landward side located behind tracker.

LM Start	3.74	Rating **	M	Issue No.	54
LM End	3.74	Issue Type +	En	Location *	LS
Category	Supplemental			GPS Latitude/Longitude	
				Start	End
Item	DWR UCIP Field Study			39.461674 °	39.461674 °
				-122.011507 °	-122.011507 °
DWR ID					
Action/Comments					
Inspector Comments: FS_ID:38182					
DS_ID:24659					
EP_NO: N/A					
FS_HLM: 3.78					
Repair Type: Non-Urgent					
Crossing Status: Found					
UCIP Comments: Need to contact owner to determine status of crossing.					
FIELD_STRUCT_DESC: 24 inch steel pipe through levee at unknown depth. Pipe is exposed on waterward side with air vent on the waterward levee shoulder. Open pump is approximately 550 feet on the landward side of the levee toe and concrete distribution pipe.					
FS Date: 05/16/2013					

Photo 1 of 3 : UCIP_FA_2015_4722.jpg



Pipe visible on waterward side.

* Location LS : Land Side N/A : Not Applicable WS : Water Side CR : Crown		** Rating A : Acceptable M : Minimally Acceptable U : Unacceptable N : Not Inspected/Rated C : Corrected A/W : Acceptable but Monitor & Maintain		+ Issue Type Ma : Maintenance Deficiency Ob : Design & System Obsolescence En : Enforcement	
--	--	---	--	---	--

**Flood Control Project Maintenance
Levee Inspections**

Levee Inspection Report By Mile - Fall 2015

Levee District No. 0002 (Glenn County)

Waterway	Bank	Unit Miles	Inspection Start/End	Inspector
Unit No. 01 Glenn County Sacramento River	Right	4.90	09/14/2015 09/14/2015	Bob Duffey

LM Start	3.74	Rating **	M	Issue No.	54 (cont)
LM End	3.74	Issue Type +	En	Location *	LS
Category	Supplemental			GPS Latitude/Longitude	
				Start	End
Item	DWR UCIP Field Study			39.461674 °	39.461674 °
				-122.011507 °	-122.011507 °
DWR ID					

Action/Comments					
Inspector Comments: FS_ID:38182 DS_ID:24659 EP_NO: N/A FS_HLM: 3.78 Repair Type: Non-Urgent Crossing Status: Found UCIP Comments: Need to contact owner to determine status of crossing. FIELD_STRUCT_DESC: 24 inch steel pipe through levee at unknown depth. Pipe is exposed on waterward side with air vent on the waterward levee shoulder. Open pump is approximately 550 feet on the landward side of the levee toe and concrete distribution pipe. FS Date: 05/16/2013					

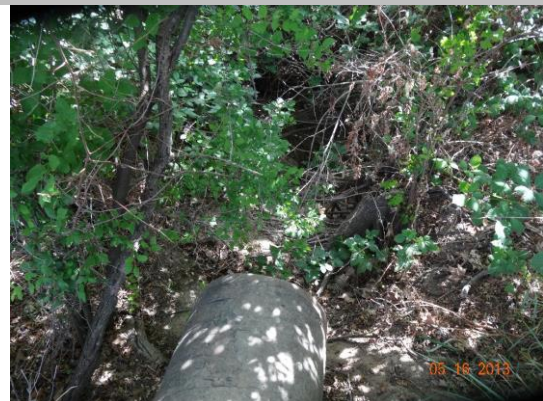
LM Start	3.74	Rating **	M	Issue No.	54 (cont)
LM End	3.74	Issue Type +	En	Location *	LS

Photo 2 of 3 : UCIP_FA_2015_4746.jpg



View of waterward side.

Photo 3 of 3 : UCIP_FA_2015_4747.jpg



View of channel on waterward side.

* Location	** Rating	+ Issue Type
LS : Land Side WS : Water Side CR : Crown	A : Acceptable M : Minimally Acceptable U : Unacceptable	Ma : Maintenance Deficiency Ob : Design & System Obsolescence En : Enforcement
N/A : Not Applicable	N : Not Inspected/Rated C : Corrected A/W : Acceptable but Monitor & Maintain	

**Flood Control Project Maintenance
Levee Inspections**

Levee Inspection Report By Mile - Fall 2015

Levee District No. 0002 (Glenn County)

Waterway	Bank	Unit Miles	Inspection Start/End	Inspector
Unit No. 01 Glenn County Sacramento River	Right	4.90	09/14/2015 09/14/2015	Bob Duffey

LM Start	4.32	Rating **	M	Issue No.	55
LM End	4.32	Issue Type +	En	Location *	LS
Category	Supplemental			GPS Latitude/Longitude	
				Start	End
Item	DWR UCIP Field Study			39.469908 °	39.469908 °
				-122.012117 °	-122.012117 °
DWR ID					
Action/Comments					
Inspector Comments: FS_ID:44188					
DS_ID:21181					
EP_NO: 18072					
FS_HLM: 4.34					
Repair Type: Non-Urgent					
Crossing Status: Indicator Found					

Photo 1 of 3 : UCIP_FA_2015_4749.jpg



3-inch PVC pipe and vent exposed on waterward toe, likely in alignment with this crossing.

LM Start	4.32	Rating **	M	Issue No.	55 (cont)
LM End	4.32	Issue Type +	En	Location *	LS

Photo 2 of 3 : UCIP_FA_2015_4750.jpg



3-inch PVC pipe and vent exposed on waterward toe, likely in alignment with this crossing.

* Location LS : Land Side N/A : Not Applicable WS : Water Side CR : Crown		** Rating A : Acceptable M : Minimally Acceptable U : Unacceptable N : Not Inspected/Rated C : Corrected A/W : Acceptable but Monitor & Maintain		+ Issue Type Ma : Maintenance Deficiency Ob : Design & System Obsolescence En : Enforcement	
--	--	---	--	---	--

**Flood Control Project Maintenance
Levee Inspections**

Levee Inspection Report By Mile - Fall 2015

Levee District No. 0002 (Glenn County)

Waterway	Bank	Unit Miles	Inspection Start/End	Inspector
Unit No. 01 Glenn County Sacramento River	Right	4.90	09/14/2015 09/14/2015	Bob Duffey

LM Start	4.32	Rating **	M	Issue No.	55 (cont)
LM End	4.32	Issue Type +	En	Location *	LS
Category	Supplemental			GPS Latitude/Longitude	
				Start	End
Item	DWR UCIP Field Study			39.469908 °	39.469908 °
				-122.012117 °	-122.012117 °
DWR ID					
Action/Comments					
Inspector Comments: FS_ID:44188					
DS_ID:21181					
EP_NO: 18072					
FS_HLM: 4.34					
Repair Type: Non-Urgent					
Crossing Status: Indicator Found					

Photo 3 of 3 : UCIP_FA_2015_5844.jpg



Well and pump visible on LS toe.

LM Start	4.38	Rating **	M	Issue No.	28
LM End	4.38	Issue Type +	Ma	Location *	LS
Category	Earthen Levee			GPS Latitude/Longitude	
				Start	End
Item	Erosion / Bank Caving			39.470675 °	39.470675 °
				-122.012763 °	-122.012763 °
DWR ID	DWR_LD0002_01_s_2015_28				
Action/Comments					
Note and monitor erosion site.					

No Photos

LM Start	4.87	Rating **	A/W	Issue No.	11
LM End	4.87	Issue Type +	Ma	Location *	LS
Category	Earthen Levee			GPS Latitude/Longitude	
				Start	End
Item	Animal Control			39.476676 °	39.476676 °
				-122.017439 °	-122.017439 °
DWR ID	DWR_LD0002_01_s_2012_11				
Action/Comments					
No rodents visible, but rodent burrows visible; need to backfill and compact or grout burrows. Inspector Comments: The rodent holes have been filled with dirt.					

Photo 1 of 1 : FA_2015_LD0002_28_11_20150910_00008.jpg



View of the removed rodent holes and bait station.

* Location LS : Land Side N/A : Not Applicable WS : Water Side CR : Crown		** Rating A : Acceptable N : Not Inspected/Rated M : Minimally Acceptable C : Corrected U : Unacceptable A/W : Acceptable but Monitor & Maintain		+ Issue Type Ma : Maintenance Deficiency Ob : Design & System Obsolescence En : Enforcement	
--	--	---	--	---	--

**Flood Control Project Maintenance
Levee Inspections**

Levee Inspection Report By Mile - Fall 2015

Levee District No. 0002 (Glenn County)

Waterway	Bank	Unit Miles	Inspection Start/End	Inspector
Unit No. 01 Glenn County Sacramento River	Right	4.90	09/14/2015 09/14/2015	Bob Duffey

LM Start	4.88	Rating **	U	Issue No.	56
LM End	4.88	Issue Type +	En	Location *	LS
Category	Supplemental			GPS Latitude/Longitude	
				Start	End
Item	DWR UCIP Field Study			39.476781 °	39.476781 °
				-122.017494 °	-122.017494 °
DWR ID					

No Photos

Action/Comments					
Inspector Comments: FS_ID:38184 DS_ID:21176 EP_NO: 15198 FS_HLM: 4.88 Repair Type: Urgent Crossing Status: Not Found UCIP Comments: No markers found. Need to contact owner to determine if crossing is still active and to determine last inspection date. Will need copy of letter showing crossings passed inspection. FIELD_STRUCT_DESC: 2-inch steel gas pipeline through the levee, 2.5 feet below the crown. Provide a field description of this crossing. (Permit No. 15198-1989) FS Date: 05/16/2013					

* Location	** Rating	+ Issue Type
LS : Land Side N/A : Not Applicable WS : Water Side CR : Crown	A : Acceptable M : Minimally Acceptable U : Unacceptable N : Not Inspected/Rated C : Corrected A/W : Acceptable but Monitor & Maintain	Ma : Maintenance Deficiency Ob : Design & System Obsolescence En : Enforcement