

**Flood Control Project Maintenance
Levee Inspections**

Maintenance Issue Types Only, Levee Inspection Report By Mile - Spring 2019

Levee District No. 0001 (Sutter County)

Waterway	Bank	Unit Miles	Inspection Start/End	Inspector
Unit No. 01 Feather River	Right	16.11	04/12/2019 04/12/2019	Sterling York

LM Start		Rating **	A	Issue No.	4
LM End		Issue Type +	Ma	Location *	
Category	Earthen Levee		GPS Latitude/Longitude		
			Start	End	
Item	Operations & Maintenance Manuals			°	°
DWR ID	DWR_LD0001S_01_s_2013_4				
Comment Code					
Inspector Comment					
O&M manuals are stored at the district office at 243 2nd St, Yuba City, CA.					

No Photos

LM Start		Rating **	A	Issue No.	6
LM End		Issue Type +	Ma	Location *	
Category	Earthen Levee		GPS Latitude/Longitude		
			Start	End	
Item	Flood Preparedness & Training			°	°
DWR ID	DWR_LD0001S_01_s_2013_6				
Comment Code					
Inspector Comment					
Drew and the district employees attend the Flood Fight class put on by DWR and RD784 annually.					

No Photos

LM Start	0.01	Rating **	A	Issue No.	5
LM End		Issue Type +	Ma	Location *	
Category	Earthen Levee		GPS Latitude/Longitude		
			Start	End	
Item	Emergency Supplies & Equipment		38.951032	°	°
			-121.585757	°	°
DWR ID	DWR_LD0001S_01_s_2013_5				
Comment Code					
Inspector Comment					
Supplies and flood fight equipment are stored at the district office. They also went in with RD784 in their large stockpile of flood fight supplies located in their district.					

No Photos

* Location LS : Land Side N/A : Not Applicable WS : Water Side CR : Crown	** Rating A : Acceptable M : Minimally Acceptable U : Unacceptable	N : Not Inspected/Rated C : Corrected A/W : Acceptable but Monitor & Maintain	+ Issue Type Ma : Maintenance Deficiency Ob : Design & System Obsolescence En : Enforcement
--	--	---	---

**Flood Control Project Maintenance
Levee Inspections**

Maintenance Issue Types Only, Levee Inspection Report By Mile - Spring 2019

Levee District No. 0001 (Sutter County)

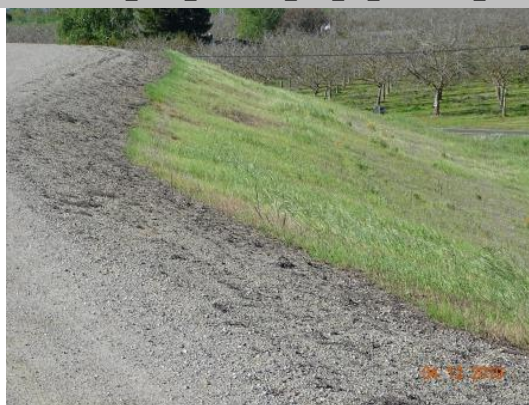
Waterway	Bank	Unit Miles	Inspection Start/End	Inspector
Unit No. 01 Feather River	Right	16.11	04/12/2019 04/12/2019	Sterling York

LM Start	0.01	Rating **	A	Issue No.	20
LM End	3.72	Issue Type +	Ma	Location *	CR
Category	Earthen Levee			GPS Latitude/Longitude	
				Start	End
Item	Crown Surface / Depressions / Rutting			38.951075 °	39.003121 °
				-121.585711 °	-121.596632 °
DWR ID	DWR_LD0001S_01_s_2019_20				
Comment Code					
Inspector Comment					
SABFCA Project, this section of levee is under construction with the install of a slurry wall. This section of the levee will not be inspected until completion of work and turned back over to the LMA, Spring 2019.					

No Photos

LM Start	3.72	Rating **	A	Issue No.	15
LM End	16.10	Issue Type +	Ma	Location *	LS
Category	Earthen Levee			GPS Latitude/Longitude	
				Start	End
Item	Vegetation			39.003134 °	39.168732 °
				-121.596628 °	-121.622687 °
DWR ID	DWR_LD0001S_01_s_2019_15				
Comment Code					
V1 : Control annual grass and weeds on the levee slopes and easements.					
Inspector Comment					
The annual vegetation is well maintained through this section of levee, Spring 2019.					

Photo 1 of 1 : SP_2019_LD0001S_433_15_20190415_00045.jpg



View looking downstream landside at the well maintained annual vegetation, Spring 2019.

LM Start	3.72	Rating **	A	Issue No.	16
LM End	16.10	Issue Type +	Ma	Location *	WS
Category	Earthen Levee			GPS Latitude/Longitude	
				Start	End
Item	Vegetation			39.003134 °	39.168732 °
				-121.596628 °	-121.622687 °
DWR ID	DWR_LD0001S_01_s_2019_16				
Comment Code					
V1 : Control annual grass and weeds on the levee slopes and easements.					
Inspector Comment					
The annual vegetation is well maintained through this section of levee, Spring 2019.					

Photo 1 of 1 : SP_2019_LD0001S_433_16_20190415_00046.jpg



View looking downstream waterside at the well maintained annual vegetation, Spring 2019.

* Location LS : Land Side N/A : Not Applicable WS : Water Side CR : Crown		** Rating A : Acceptable M : Minimally Acceptable U : Unacceptable N : Not Inspected/Rated C : Corrected A/W : Acceptable but Monitor & Maintain		+ Issue Type Ma : Maintenance Deficiency Ob : Design & System Obsolescence En : Enforcement	
--	--	---	--	---	--

**Flood Control Project Maintenance
Levee Inspections**

Maintenance Issue Types Only, Levee Inspection Report By Mile - Spring 2019

Levee District No. 0001 (Sutter County)

Waterway	Bank	Unit Miles	Inspection Start/End	Inspector
Unit No. 01 Feather River	Right	16.11	04/12/2019 04/12/2019	Sterling York

LM Start	5.02	Rating **	A/W	Issue No.	25
LM End	5.02	Issue Type +	Ma	Location *	
Category	Supplemental			GPS Latitude/Longitude	
				Start	End
Item	2017 Storm Damage			39.018322 °	39.018322 °
				-121.610275 °	-121.610275 °
DWR ID	DWR_LD0001S_01_f_2017_25				
Comment Code					
Inspector Comment					
Levee Evaluation Comments					
Description:					
Site ID No:145					
Site Designation:LD1-S-02					
Repair Type: Erosion					
Rating:Critical					
Field Date:7/17/2017					
Notes:					

Photo 1 of 3 : LEVAL_SP_2019_145_1767.jpg



LM Start	5.02	Rating **	A/W	Issue No.	25 (cont)
LM End	5.02	Issue Type +	Ma	Location *	

Photo 2 of 3 : LEVAL_SP_2019_145_1768.jpg



* Location LS : Land Side N/A : Not Applicable WS : Water Side CR : Crown		** Rating A : Acceptable N : Not Inspected/Rated M : Minimally Acceptable C : Corrected U : Unacceptable A/W : Acceptable but Monitor & Maintain		+ Issue Type Ma : Maintenance Deficiency Ob : Design & System Obsolescence En : Enforcement
--	--	---	--	---

**Flood Control Project Maintenance
Levee Inspections**

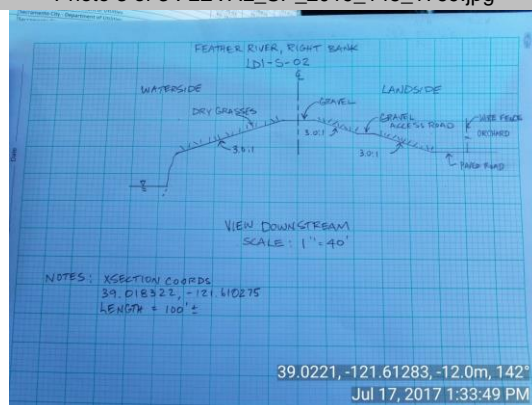
Maintenance Issue Types Only, Levee Inspection Report By Mile - Spring 2019

Levee District No. 0001 (Sutter County)

Waterway	Bank	Unit Miles	Inspection Start/End	Inspector
Unit No. 01 Feather River	Right	16.11	04/12/2019 04/12/2019	Sterling York

LM Start	5.02	Rating **	A/W	Issue No.	25 (cont)	
LM End	5.02	Issue Type +	Ma	Location *		
Category	Supplemental			GPS Latitude/Longitude		
				Start		End
Item	2017 Storm Damage			39.018322 °	39.018322 °	
				-121.610275 °	-121.610275 °	
DWR ID	DWR_LD0001S_01_f_2017_25					
Comment Code						
Inspector Comment						
Levee Evaluation Comments						
Description:						
Site ID No:145						
Site Designation:LD1-S-02						
Repair Type: Erosion						
Rating:Critical						
Field Date:7/17/2017						
Notes:						

Photo 3 of 3 : LEVAL_SP_2019_145_1769.jpg



LM Start	5.65	Rating **	U	Issue No.	18
LM End	5.65	Issue Type +	Ma	Location *	WS
Category	Earthen Levee			GPS Latitude/Longitude	
				Start	End
Item	Animal Control			39.026940 °	39.026940 °
				-121.613100 °	-121.613100 °
DWR ID	DWR_LD0001S_01_s_2019_18				
Comment Code					
A3 : No rodents visible, but rodent burrows visible; need to backfill and compact or grout burrows.					
Inspector Comment					
Repair rodent hole in levee slope, Spring 2019.					

Photo 1 of 1 : SP_2019_LD0001S_433_18_20190415_00044.jpg



View looking at waterside levee slope of a large rodent/animal hole, Spring 2019.

* Location		** Rating		+ Issue Type	
LS : Land Side	N/A : Not Applicable	A : Acceptable	N : Not Inspected/Rated	Ma : Maintenance Deficiency	
WS : Water Side		M : Minimally Acceptable	C : Corrected	Ob : Design & System Obsolescence	
CR : Crown		U : Unacceptable	A/W : Acceptable but Monitor & Maintain	En : Enforcement	

**Flood Control Project Maintenance
Levee Inspections**

Maintenance Issue Types Only, Levee Inspection Report By Mile - Spring 2019

Levee District No. 0001 (Sutter County)

Waterway	Bank	Unit Miles	Inspection Start/End	Inspector
Unit No. 01 Feather River	Right	16.11	04/12/2019 04/12/2019	Sterling York

LM Start	7.69	Rating **	A/W	Issue No.	19	
LM End	7.74	Issue Type +	Ma	Location *		
Category	Supplemental			GPS Latitude/Longitude		
				Start	End	
Item	2017 Storm Damage			39.055986 °	39.056710 °	
				-121.611301 °	-121.611331 °	
DWR ID	DWR_LD0001S_01_f_2017_19					
Comment Code						
Inspector Comment						
Levee Evaluation Comments						
Description:						
Site ID No:146						
Site Designation:LD1-S-03						
Repair Type: Erosion						
Rating:Area of Concern						
Field Date:8/3/2017						
Notes:						

LM Start	7.69	Rating **	A/W	Issue No.	19 (cont)
LM End	7.74	Issue Type +	Ma	Location *	

Photo 1 of 3 : LEVAL_SP_2019_146_4051.jpg



Photo 2 of 3 : LEVAL_SP_2019_146_4053.jpg



* Location LS : Land Side N/A : Not Applicable WS : Water Side CR : Crown		** Rating A : Acceptable M : Minimally Acceptable U : Unacceptable N : Not Inspected/Rated C : Corrected A/W : Acceptable but Monitor & Maintain		+ Issue Type Ma : Maintenance Deficiency Ob : Design & System Obsolescence En : Enforcement	
---	--	--	--	--	--

**Flood Control Project Maintenance
Levee Inspections**

Maintenance Issue Types Only, Levee Inspection Report By Mile - Spring 2019

Levee District No. 0001 (Sutter County)

Waterway	Bank	Unit Miles	Inspection Start/End	Inspector
Unit No. 01 Feather River	Right	16.11	04/12/2019 04/12/2019	Sterling York

LM Start	7.69	Rating **	A/W	Issue No.	19 (cont)	
LM End	7.74	Issue Type +	Ma	Location *		
Category	Supplemental			GPS Latitude/Longitude		
				Start		End
Item	2017 Storm Damage			39.055986 °		39.056710 °
				-121.611301 °		-121.611331 °
DWR ID	DWR_LD0001S_01_f_2017_19					
Comment Code						
Inspector Comment						
Levee Evaluation Comments						
Description:						
Site ID No:146						
Site Designation:LD1-S-03						
Repair Type: Erosion						
Rating:Area of Concern						
Field Date:8/3/2017						
Notes:						

Photo 3 of 3 : LEVAL_SP_2019_146_4054.jpg



LM Start	8.55	Rating **	M	Issue No.	17
LM End	8.55	Issue Type +	Ma	Location *	LS
Category	Earthen Levee			GPS Latitude/Longitude	
				Start	End
Item	Animal Control			39.067929 °	39.067929 °
				-121.608064 °	-121.608064 °
DWR ID	DWR_LD0001S_01_s_2019_17				
Comment Code					
A3 : No rodents visible, but rodent burrows visible; need to backfill and compact or grout burrows.					
Inspector Comment					
There are large depressions in the levee slope that appear to be caused by some type of burrowing animals that needs to be repaired, Spring 2019.					

Photo 1 of 1 : SP_2019_LD0001S_433_17_20190415_00043.jpg



View looking at the landside levee slope at large depressions in the levee that appear to be caused by some type of burrowing animals that need to be repaired, Spring 2019.

* Location LS : Land Side N/A : Not Applicable WS : Water Side CR : Crown		** Rating A : Acceptable N : Not Inspected/Rated M : Minimally Acceptable C : Corrected U : Unacceptable A/W : Acceptable but Monitor & Maintain		+ Issue Type Ma : Maintenance Deficiency Ob : Design & System Obsolescence En : Enforcement
--	--	---	--	---

**Flood Control Project Maintenance
Levee Inspections**

Maintenance Issue Types Only, Levee Inspection Report By Mile - Spring 2019

Levee District No. 0001 (Sutter County)

Waterway	Bank	Unit Miles	Inspection Start/End	Inspector
Unit No. 01 Feather River	Right	16.11	04/12/2019 04/12/2019	Sterling York

LM Start	12.00	Rating **	C	Issue No.	24
LM End	12.00	Issue Type +	Ma	Location *	WS
Category	Earthen Levee			GPS Latitude/Longitude	
				Start	End
Item	Slope Stability			39.114994 °	39.114994 °
				-121.605726 °	-121.605726 °
DWR ID	DWR_LD0001S_01_f _ 2018_24				
Comment Code					
S2 : Repair the levee slope damaged by foot traffic and prevent access where possible.					
Inspector Comment					
Foot path shows no sign of soil separation or erosion, but should be monitored, Fall 2018.					

No Photos

LM Start	13.87	Rating **	A/W	Issue No.	26
LM End	13.87	Issue Type +	Ma	Location *	CR
Category	Earthen Levee			GPS Latitude/Longitude	
				Start	End
Item	Crown Surface / Depressions / Rutting			39.139734 °	39.139734 °
				-121.608477 °	-121.608477 °
DWR ID	DWR_LD0001S_01_f _ 2018_26				
Comment Code					
C2 : Repair depressions or ruts in the crown or slope.					
Inspector Comment					
There is ongoing construction at the 5th Street Bridge, Fall 2018.					

Photo 1 of 2 : SP_2019_LD0001S_433_26_20190415_00047.jpg



View looking downstream waterside of the 5th Street bridge construction, Spring 2019.

LM Start	13.87	Rating **	A/W	Issue No.	26 (cont)
LM End	13.87	Issue Type +	Ma	Location *	CR

Photo 2 of 2 : SP_2019_LD0001S_433_26_20190305_00011.jpg



View looking downstream waterside of the 5th Street bridge construction, Fall 2018.

* Location LS : Land Side N/A : Not Applicable WS : Water Side CR : Crown		** Rating A : Acceptable M : Minimally Acceptable U : Unacceptable N : Not Inspected/Rated C : Corrected A/W : Acceptable but Monitor & Maintain		+ Issue Type Ma : Maintenance Deficiency Ob : Design & System Obsolescence En : Enforcement	
---	--	--	--	--	--